

Data Path : Z:\pestpcbsrv\HPCHEM1\ECD_0\Data\PO112118\
 Data File : PO051702.D
 Signal(s) : Signal #1: ECD1A.CH Signal #2: ECD2B.CH
 Acq On : 21 Nov 2018 11:17
 Operator : SM/SJ
 Sample : J5981-03MS
 Misc :
 ALS Vial : 12 Sample Multiplier: 1

Instrument :
 ECD_O
 ClientSampled :

Integration File signal 1: autoint1.e
 Integration File signal 2: autoint2.e
 Quant Time: Nov 21 23:43:10 2018
 Quant Method : Z:\pestpcbsrv\HPCHEM1\ECD_0\methods\PO112018.M
 Quant Title : GC EXTRACTABLES
 QLast Update : Wed Nov 21 00:55:28 2018
 Response via : Initial Calibration
 Integrator: ChemStation 6890 Scale Mode: Small noise peaks clipped

Volume Inj. : 2 µl
 Signal #1 Phase : ZB-MR1 Signal #2 Phase: ZB-MR2
 Signal #1 Info : 30Mx0.32mmx 0.50µ Signal #2 Info : 30M x 0.32mm x 0.25µm

Compound	RT#1	RT#2	Resp#1	Resp#2	ng/ml	ng/ml
System Monitoring Compounds						
1) SA Tetrachlo...	4.317	3.323	26543324	3353032	35.260	14.008 #
2) SA Decachlor...	9.937	8.043	13570998	5213207	29.255	24.116
Target Compounds						
3) L1 AR-1016-1	5.480	4.330	5112880	2422047	226.251	326.599 #
4) L1 AR-1016-2	5.501	4.347	10380660	1967663	307.182	160.883 #
5) L1 AR-1016-3	5.562	4.511	7711234	1696932	386.359	277.936 #
6) L1 AR-1016-4	5.664	4.553	4111789	1347428	247.590	253.932
7) L1 AR-1016-5	5.951	4.751	6181179	1708973	388.428	261.864 #
8) L2 AR-1221-1	4.503	3.521	2859186	702261	402.144	312.256
9) L2 AR-1221-2	4.618	3.600	2323565	1847325	443.461	1065.418 #
10) L2 AR-1221-3	4.691	3.673	5115365	825746	310.311	150.262 #
11) L3 AR-1232-1	4.691	3.673	5115365	825746	385.196	178.332 #
12) L3 AR-1232-2	5.216	4.347	6315143	1967663	869.410	367.399 #
13) L3 AR-1232-3	5.501	4.511	10380660	1696932	725.059	649.199
14) L3 AR-1232-4	5.664	4.593	4111789	1397548	577.528	634.082
15) L3 AR-1232-5	5.751	4.751	3063103	1708973	619.704	675.130
16) L4 AR-1242-1	5.480	4.330	5112880	2422047	284.753	408.166 #
17) L4 AR-1242-2	5.501	4.347	10380660	1967663	381.695	197.134 #
18) L4 AR-1242-3	5.562	4.511	7711234	1696932	482.855	342.116 #
19) L4 AR-1242-4	5.664	4.593	4111789	1397548	311.381	294.930
20) L4 AR-1242-5	6.419	5.083	6843876	3245314	512.044	538.390
21) L5 AR-1248-1	5.480	4.330	5112880	2422047	332.112	449.612 #
22) L5 AR-1248-2	5.751	4.553	3063103	1347428	144.085	170.766
23) L5 AR-1248-3	5.951	4.593	6181179	1397548	260.520	178.267 #
24) L5 AR-1248-4	6.326	4.751	11620356	1708973	439.662	176.152 #
25) L5 AR-1248-5	6.419	5.124	6843876	490897	272.913	51.994 #
26) L6 AR-1254-1	6.326	5.083	11620356	3245314	470.504	236.056 #
27) L6 AR-1254-2	6.544	5.226	14010416	3242649	359.742	271.701
28) L6 AR-1254-3	6.910	5.622	16730577	6579443	415.024	350.176
29) L6 AR-1254-4	7.193	5.826	5619312	939654	180.159	82.384 #
30) L6 AR-1254-5	7.609	6.224	32873110	9672718	1067.604	612.893 #
31) L7 AR-1260-1	7.070	5.729	20704662	6510457	687.656	479.904 #
32) L7 AR-1260-2	7.324	5.913	50421753	9192496	1194.370	529.725 #
33) L7 AR-1260-3	7.682	6.055	24204738	7506352	833.125	490.032 #
34) L7 AR-1260-4	7.907	6.510	32838121	5278417	1194.043	519.412 #
35) L7 AR-1260-5	8.219	6.749	47019456	14243196	816.214	551.811 #
36) L8 AR-1262-1	7.682	6.263	24204738	6172856	516.771	330.410 #
37) L8 AR-1262-2	8.219	6.749	47019456	14243196	672.621	472.137 #
38) L8 AR-1262-3	8.534	7.022	31592790	5105894	716.151	409.101 #
39) L8 AR-1262-4	8.600	7.083	12093952	12411851	349.151	568.685 #
40) L8 AR-1262-5	9.231	7.568	14151947	4289302	685.180	482.749 #
41) L9 AR-1268-1	8.534	7.022	31592790	5105894	340.694	129.318 #

Data Path : Z:\pestpcbsrv\HPCHEM1\ECD_0\Data\PO112118\
 Data File : PO051702.D
 Signal(s) : Signal #1: ECD1A.CH Signal #2: ECD2B.CH
 Acq On : 21 Nov 2018 11:17
 Operator : SM/SJ
 Sample : J5981-03MS
 Misc :
 ALS Vial : 12 Sample Multiplier: 1

Instrument :
 ECD_0
 ClientSampleId :

Integration File signal 1: autoint1.e
 Integration File signal 2: autoint2.e
 Quant Time: Nov 21 23:43:10 2018
 Quant Method : Z:\pestpcbsrv\HPCHEM1\ECD_0\methods\PO112018.M
 Quant Title : GC EXTRACTABLES
 QLast Update : Wed Nov 21 00:55:28 2018
 Response via : Initial Calibration
 Integrator: ChemStation 6890 Scale Mode: Small noise peaks clipped

Volume Inj. : 2 µl
 Signal #1 Phase : ZB-MR1 Signal #2 Phase: ZB-MR2
 Signal #1 Info : 30Mx0.32mmx 0.50µ Signal #2 Info : 30M x 0.32mm x 0.25µm

	Compound	RT#1	RT#2	Resp#1	Resp#2	ng/ml	ng/ml
42)	L9 AR-1268-2	8.600	7.083	12093952	12411851	151.574	336.335 #
43)	L9 AR-1268-3	8.821	7.280	8607043	1836526	122.962	55.696 #
44)	L9 AR-1268-4	9.231	7.568	14151947	4289302	571.328	381.217 #
45)	L9 AR-1268-5	9.621	7.831	6477029	2994498	34.269	34.896

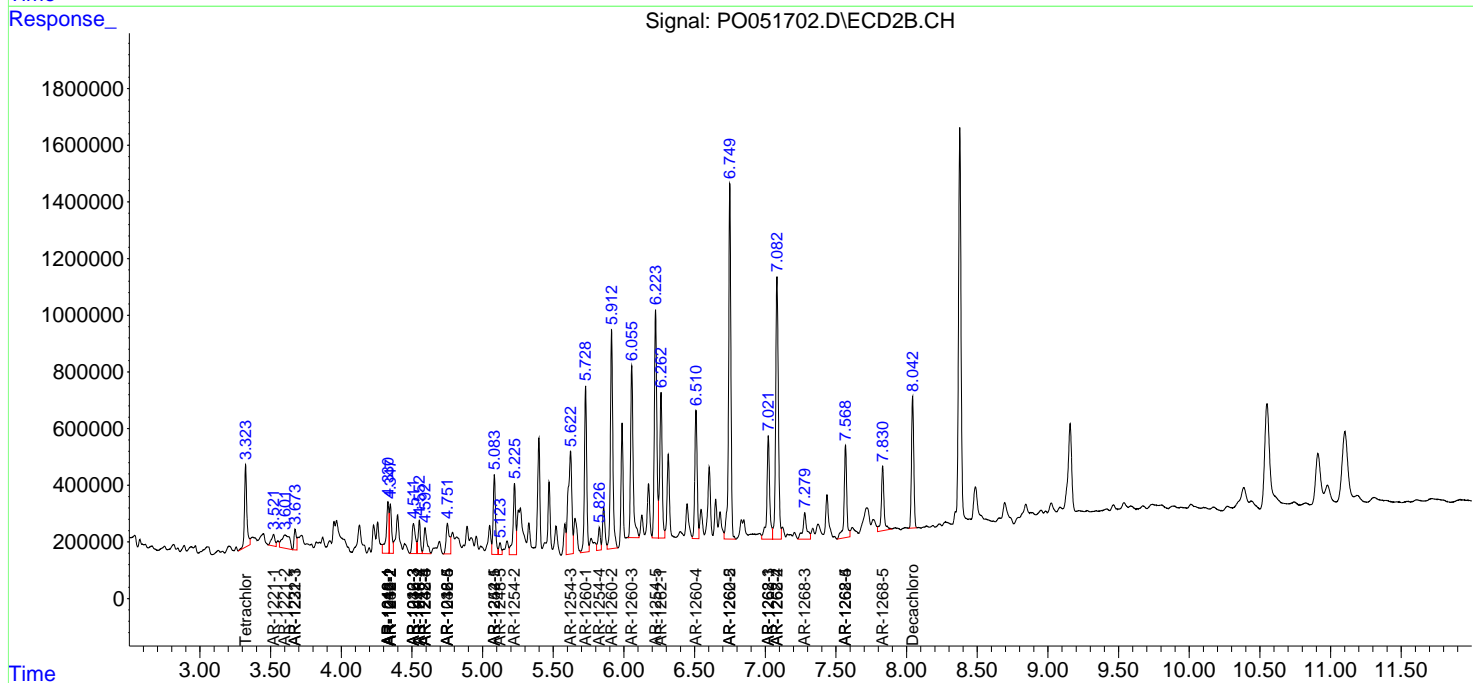
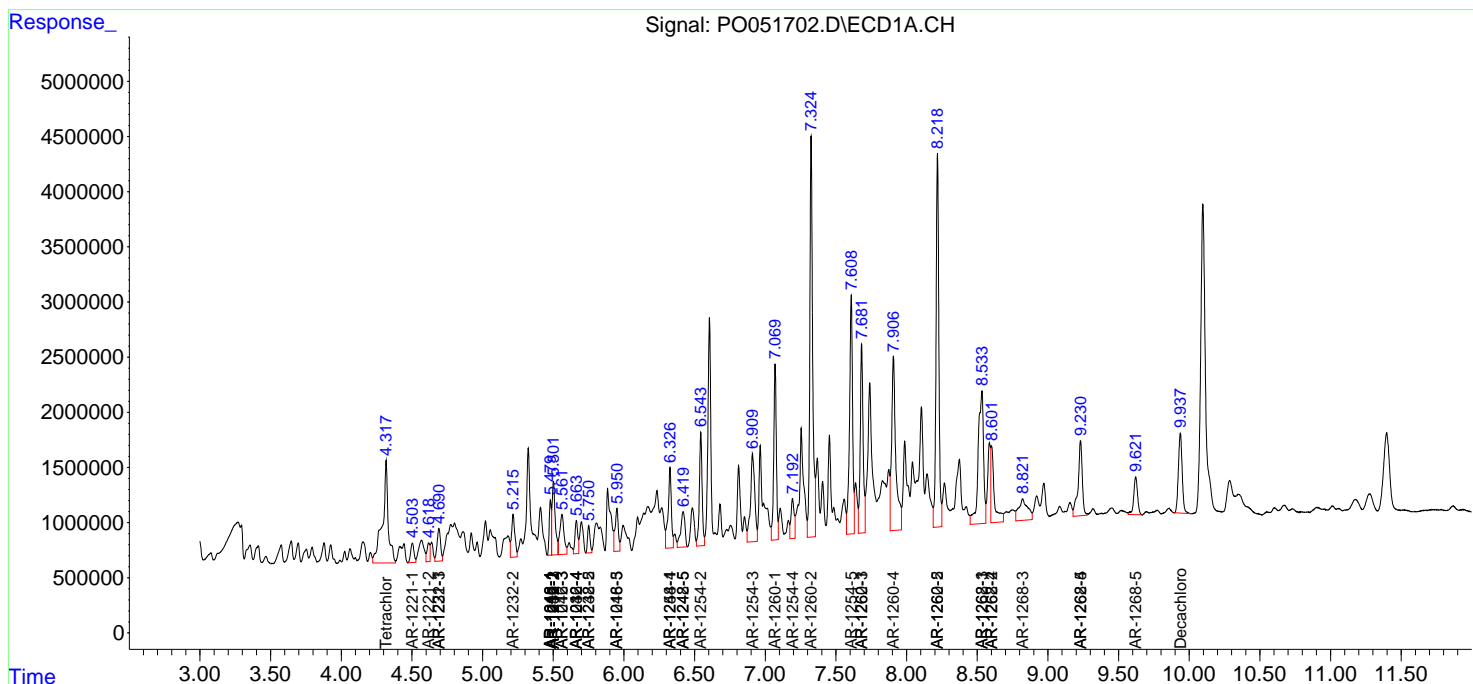
(f)=RT Delta > 1/2 Window (#)=Amounts differ by > 25% (m)=manual int.

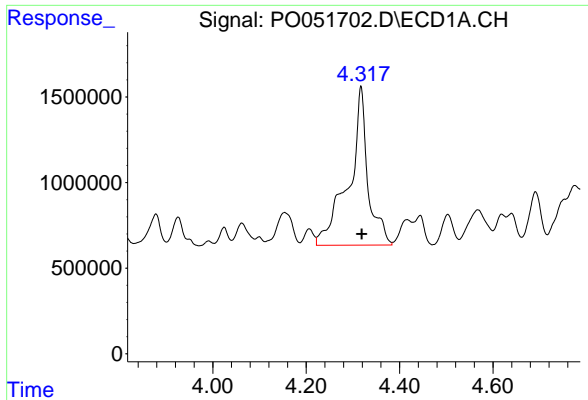
Data Path : Z:\pestpcbsrv\HPCHEM1\ECD_O\Data\PO112118\
 Data File : P0051702.D
 Signal(s) : Signal #1: ECD1A.CH Signal #2: ECD2B.CH
 Acq On : 21 Nov 2018 11:17
 Operator : SM/SJ
 Sample : J5981-03MS
 Misc :
 ALS Vial : 12 Sample Multiplier: 1

Instrument :
 ECD_O
 ClientSampled :

Integration File signal 1: autoint1.e
 Integration File signal 2: autoint2.e
 Quant Time: Nov 21 23:43:10 2018
 Quant Method : Z:\pestpcbsrv\HPCHEM1\ECD_O\methods\PO112018.M
 Quant Title : GC EXTRACTABLES
 QLast Update : Wed Nov 21 00:55:28 2018
 Response via : Initial Calibration
 Integrator: ChemStation 6890 Scale Mode: Small noise peaks clipped

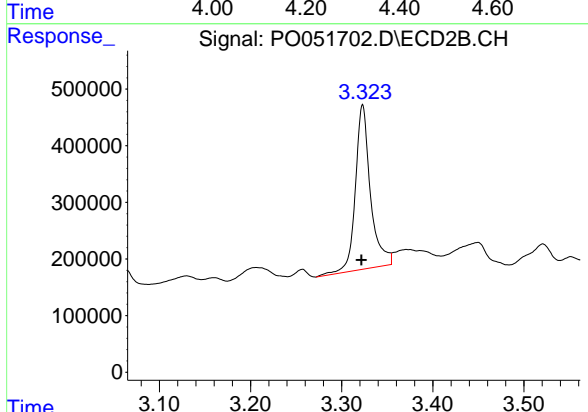
Volume Inj. : 2 µl
 Signal #1 Phase : ZB-MR1 Signal #2 Phase: ZB-MR2
 Signal #1 Info : 30Mx0.32mmx 0.50µ Signal #2 Info : 30M x 0.32mm x 0.25µm



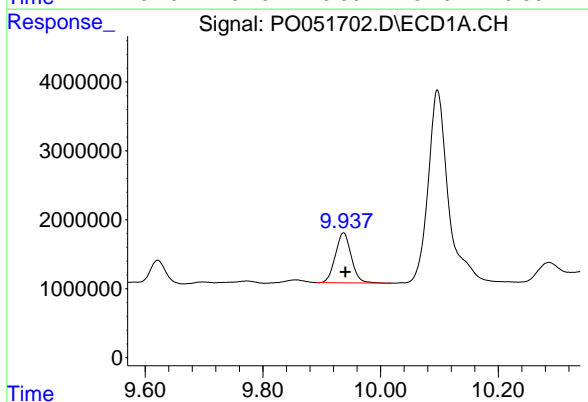


#1 Tetrachloro-m-xylene
 R.T.: 4.317 min
 Delta R.T.: -0.002 min
 Response: 26543324
 Conc: 35.26 ng/ml

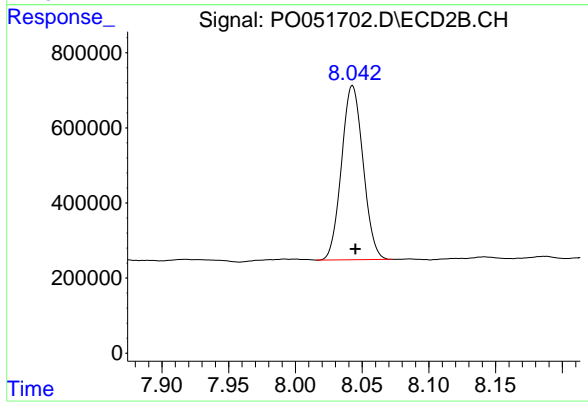
Instrument :
 ECD_O
 ClientSampleId :



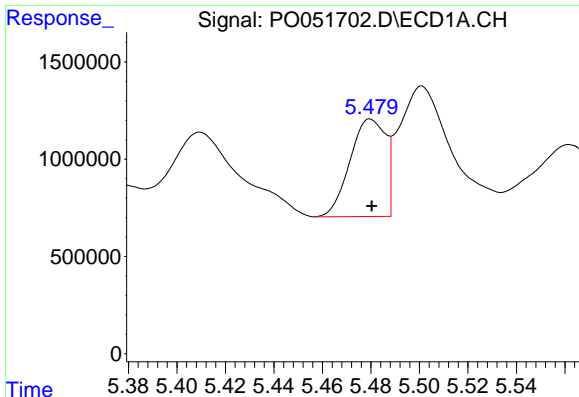
#1 Tetrachloro-m-xylene
 R.T.: 3.323 min
 Delta R.T.: 0.001 min
 Response: 3353032
 Conc: 14.01 ng/ml



#2 Decachlorobiphenyl
 R.T.: 9.937 min
 Delta R.T.: -0.003 min
 Response: 13570998
 Conc: 29.25 ng/ml



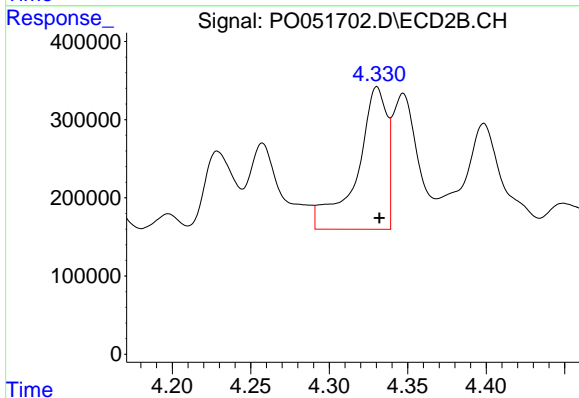
#2 Decachlorobiphenyl
 R.T.: 8.043 min
 Delta R.T.: -0.002 min
 Response: 5213207
 Conc: 24.12 ng/ml



#3 AR-1016-1

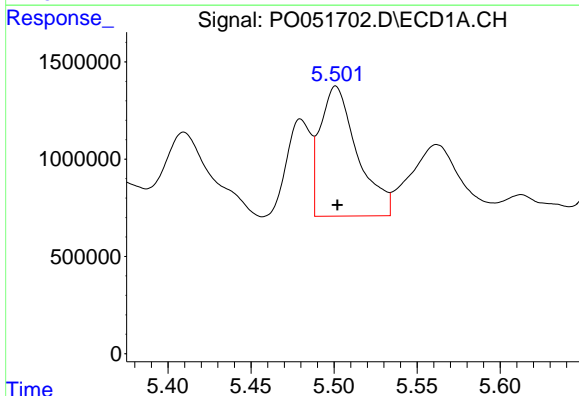
R.T.: 5.480 min
Delta R.T.: 0.000 min
Response: 5112880
Conc: 226.25 ng/ml

Instrument :
ECD_O
ClientSampled :



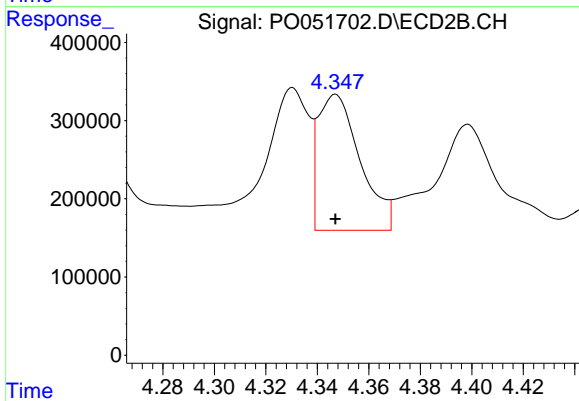
#3 AR-1016-1

R.T.: 4.330 min
Delta R.T.: -0.002 min
Response: 2422047
Conc: 326.60 ng/ml



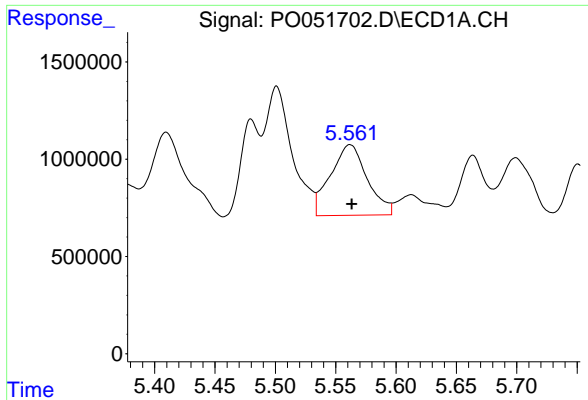
#4 AR-1016-2

R.T.: 5.501 min
Delta R.T.: 0.000 min
Response: 10380660
Conc: 307.18 ng/ml



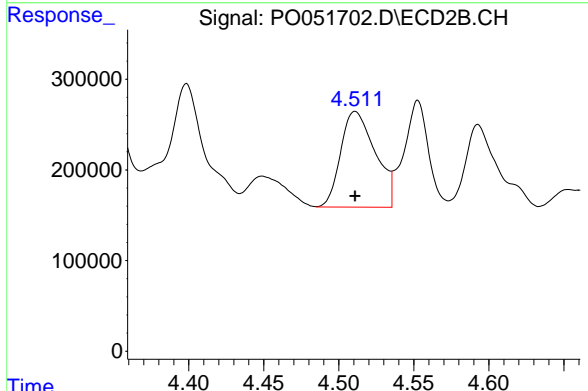
#4 AR-1016-2

R.T.: 4.347 min
Delta R.T.: 0.000 min
Response: 1967663
Conc: 160.88 ng/ml

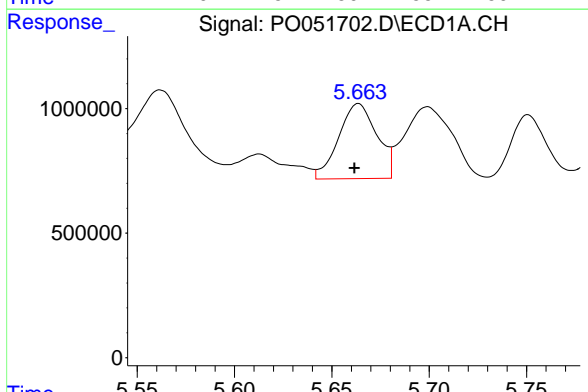


#5 AR-1016-3
 R.T.: 5.562 min
 Delta R.T.: -0.001 min
 Response: 7711234
 Conc: 386.36 ng/ml

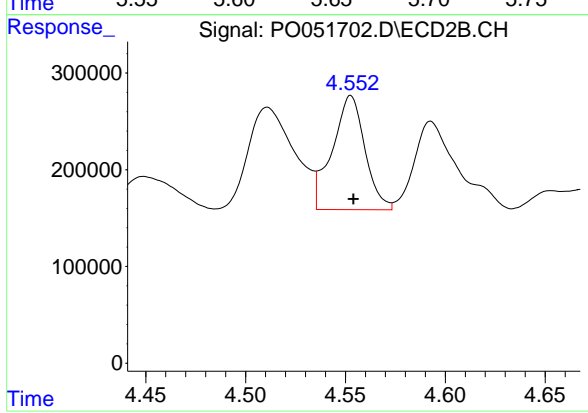
Instrument :
 ECD_O
 ClientSampleId :



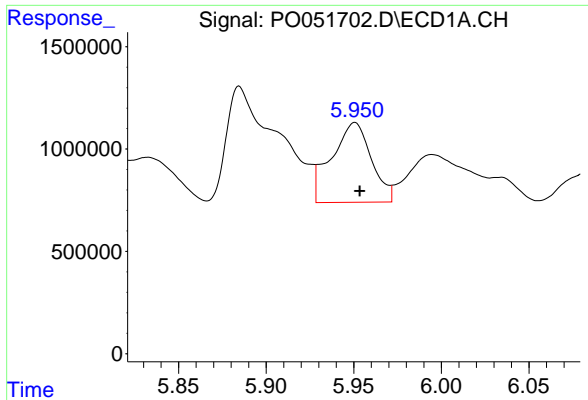
#5 AR-1016-3
 R.T.: 4.511 min
 Delta R.T.: 0.000 min
 Response: 1696932
 Conc: 277.94 ng/ml



#6 AR-1016-4
 R.T.: 5.664 min
 Delta R.T.: 0.002 min
 Response: 4111789
 Conc: 247.59 ng/ml



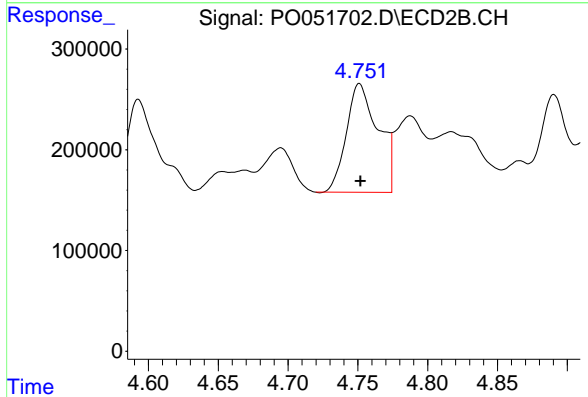
#6 AR-1016-4
 R.T.: 4.553 min
 Delta R.T.: -0.001 min
 Response: 1347428
 Conc: 253.93 ng/ml



#7 AR-1016-5

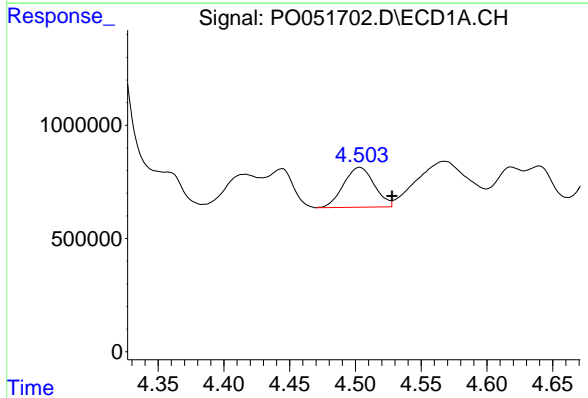
R.T.: 5.951 min
 Delta R.T.: -0.003 min
 Response: 6181179
 Conc: 388.43 ng/ml

Instrument :
 ECD_O
 ClientSampleId :



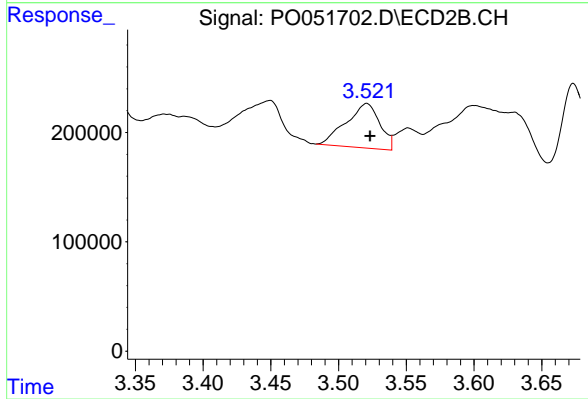
#7 AR-1016-5

R.T.: 4.751 min
 Delta R.T.: 0.000 min
 Response: 1708973
 Conc: 261.86 ng/ml



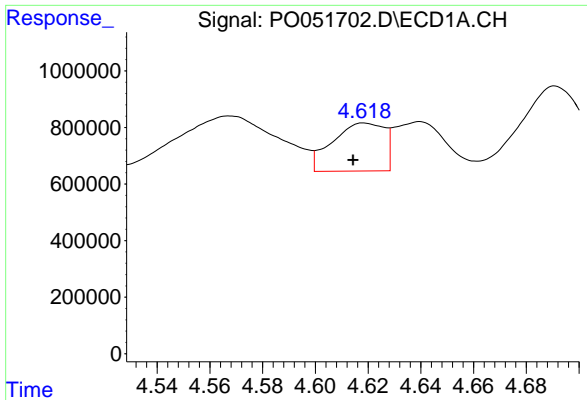
#8 AR-1221-1

R.T.: 4.503 min
 Delta R.T.: -0.025 min
 Response: 2859186
 Conc: 402.14 ng/ml



#8 AR-1221-1

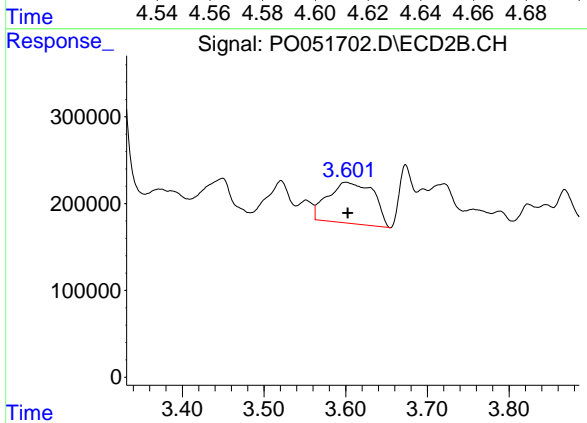
R.T.: 3.521 min
 Delta R.T.: -0.003 min
 Response: 702261
 Conc: 312.26 ng/ml



#9 AR-1221-2

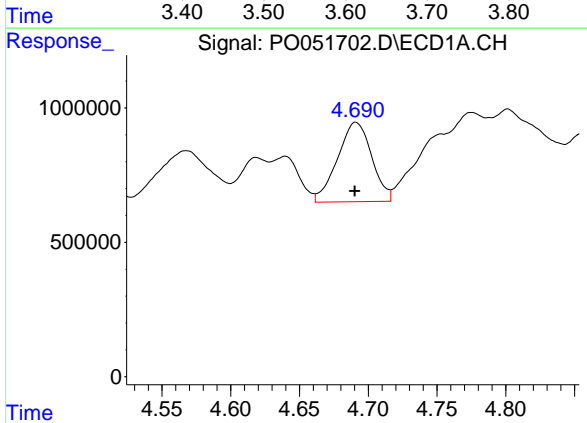
R.T.: 4.618 min
 Delta R.T.: 0.004 min
 Response: 2323565
 Conc: 443.46 ng/ml

Instrument :
 ECD_O
 ClientSampleId :



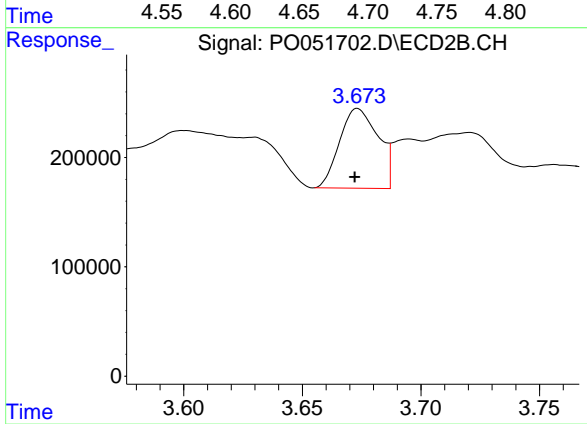
#9 AR-1221-2

R.T.: 3.600 min
 Delta R.T.: -0.003 min
 Response: 1847325
 Conc: 1065.42 ng/ml



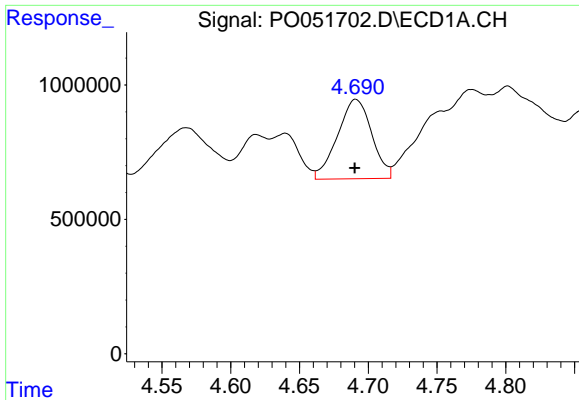
#10 AR-1221-3

R.T.: 4.691 min
 Delta R.T.: 0.000 min
 Response: 5115365
 Conc: 310.31 ng/ml



#10 AR-1221-3

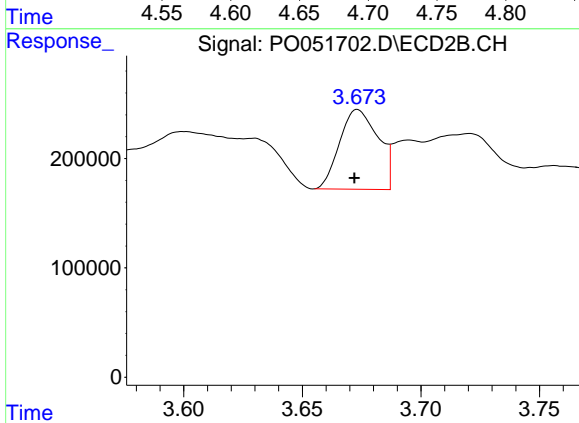
R.T.: 3.673 min
 Delta R.T.: 0.001 min
 Response: 825746
 Conc: 150.26 ng/ml



#11 AR-1232-1

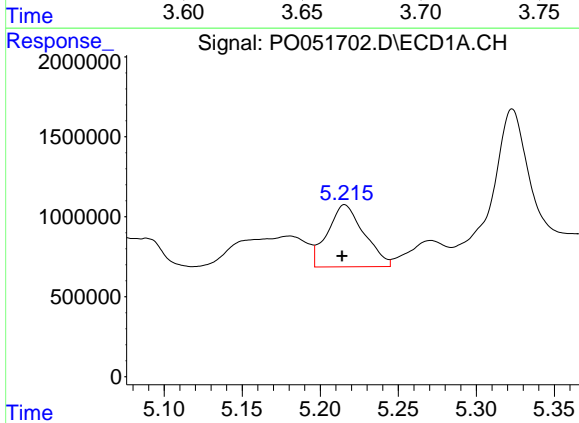
R.T.: 4.691 min
 Delta R.T.: 0.000 min
 Response: 5115365
 Conc: 385.20 ng/ml

Instrument :
 ECD_O
 ClientSampled :



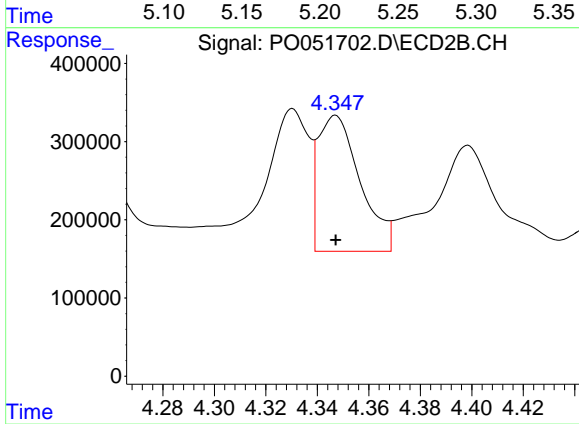
#11 AR-1232-1

R.T.: 3.673 min
 Delta R.T.: 0.001 min
 Response: 825746
 Conc: 178.33 ng/ml



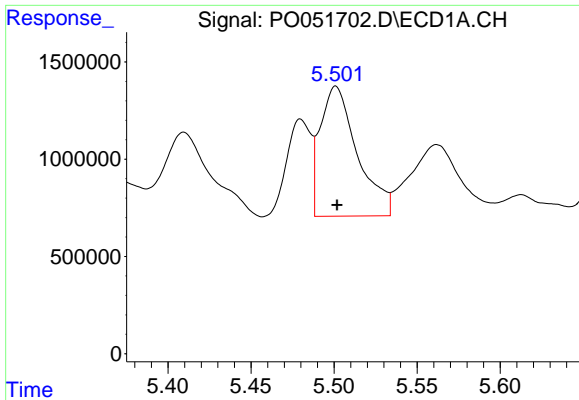
#12 AR-1232-2

R.T.: 5.216 min
 Delta R.T.: 0.002 min
 Response: 6315143
 Conc: 869.41 ng/ml



#12 AR-1232-2

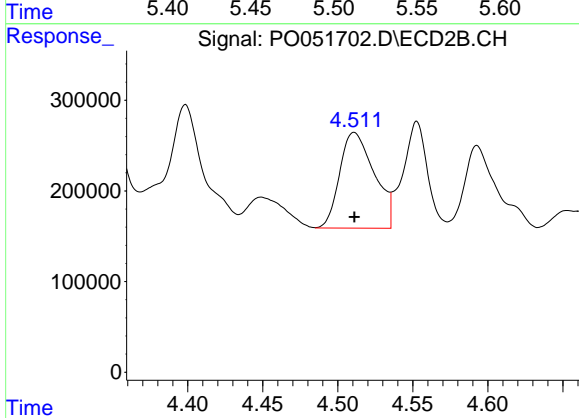
R.T.: 4.347 min
 Delta R.T.: 0.000 min
 Response: 1967663
 Conc: 367.40 ng/ml



#13 AR-1232-3

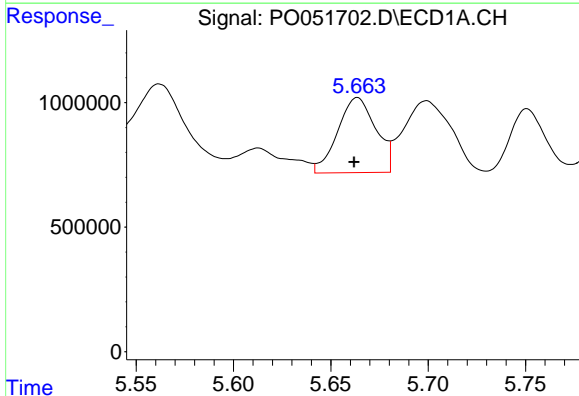
R.T.: 5.501 min
 Delta R.T.: 0.000 min
 Response: 10380660
 Conc: 725.06 ng/ml

Instrument :
 ECD_O
 ClientSampleId :



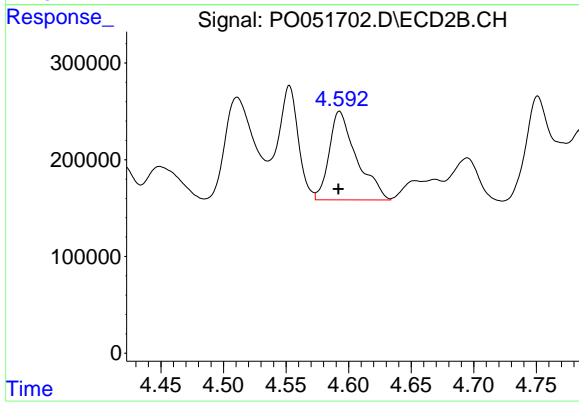
#13 AR-1232-3

R.T.: 4.511 min
 Delta R.T.: 0.000 min
 Response: 1696932
 Conc: 649.20 ng/ml



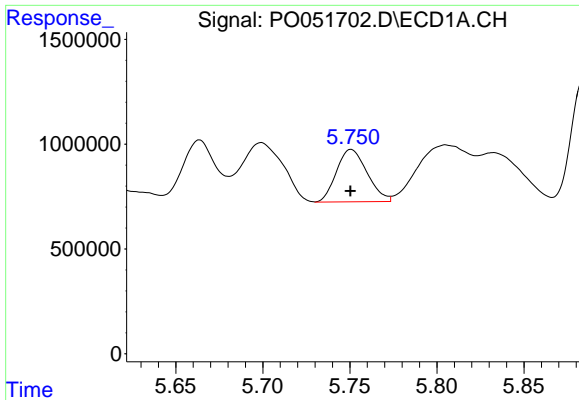
#14 AR-1232-4

R.T.: 5.664 min
 Delta R.T.: 0.002 min
 Response: 4111789
 Conc: 577.53 ng/ml



#14 AR-1232-4

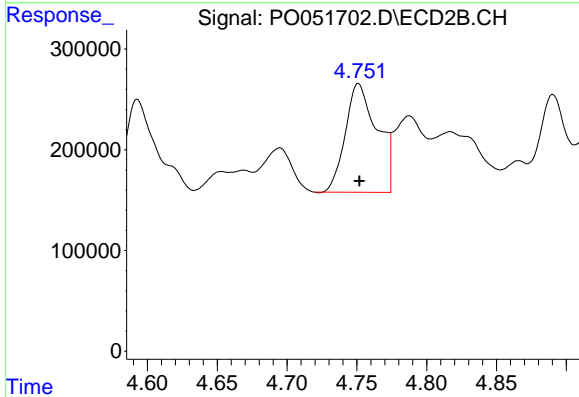
R.T.: 4.593 min
 Delta R.T.: 0.001 min
 Response: 1397548
 Conc: 634.08 ng/ml



#15 AR-1232-5

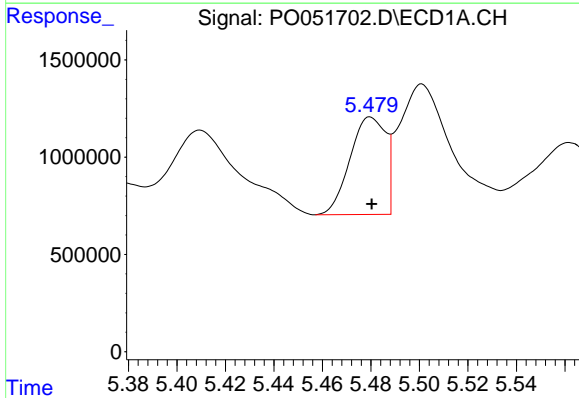
R.T.: 5.751 min
 Delta R.T.: 0.000 min
 Response: 3063103
 Conc: 619.70 ng/ml

Instrument :
 ECD_O
 ClientSampled :



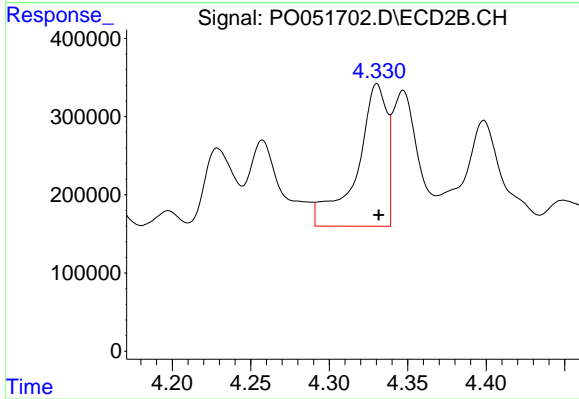
#15 AR-1232-5

R.T.: 4.751 min
 Delta R.T.: 0.000 min
 Response: 1708973
 Conc: 675.13 ng/ml



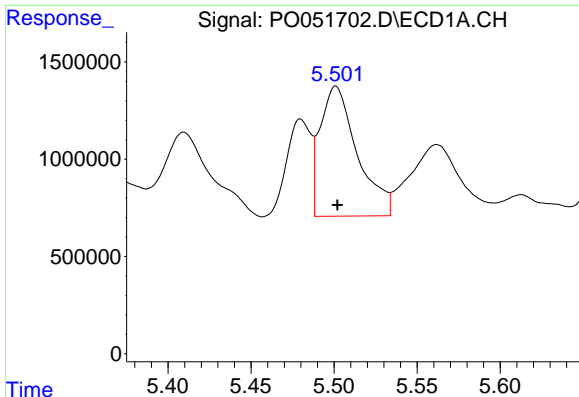
#16 AR-1242-1

R.T.: 5.480 min
 Delta R.T.: 0.000 min
 Response: 5112880
 Conc: 284.75 ng/ml



#16 AR-1242-1

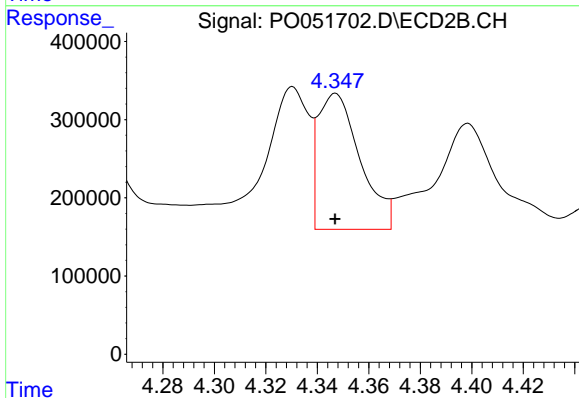
R.T.: 4.330 min
 Delta R.T.: -0.001 min
 Response: 2422047
 Conc: 408.17 ng/ml



#17 AR-1242-2

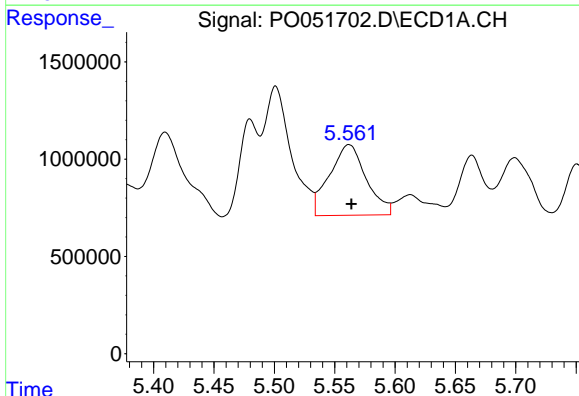
R.T.: 5.501 min
 Delta R.T.: 0.000 min
 Response: 10380660
 Conc: 381.69 ng/ml

Instrument :
 ECD_O
 ClientSampleId :



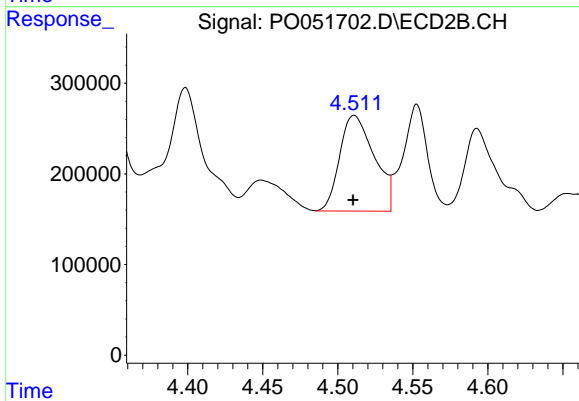
#17 AR-1242-2

R.T.: 4.347 min
 Delta R.T.: 0.000 min
 Response: 1967663
 Conc: 197.13 ng/ml



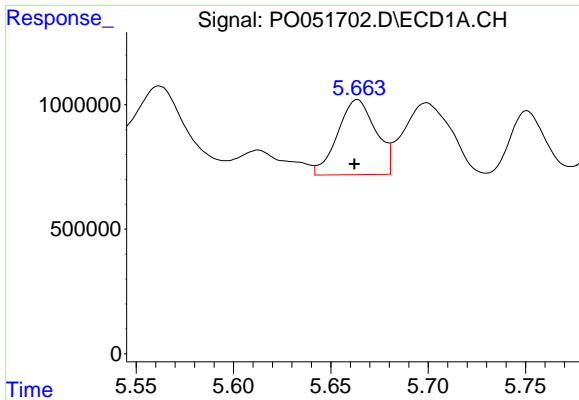
#18 AR-1242-3

R.T.: 5.562 min
 Delta R.T.: -0.002 min
 Response: 7711234
 Conc: 482.86 ng/ml



#18 AR-1242-3

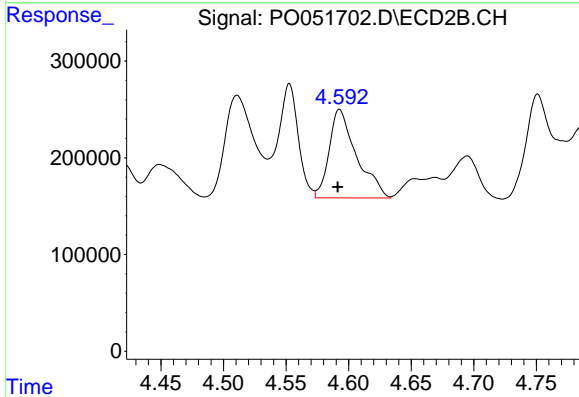
R.T.: 4.511 min
 Delta R.T.: 0.000 min
 Response: 1696932
 Conc: 342.12 ng/ml



#19 AR-1242-4

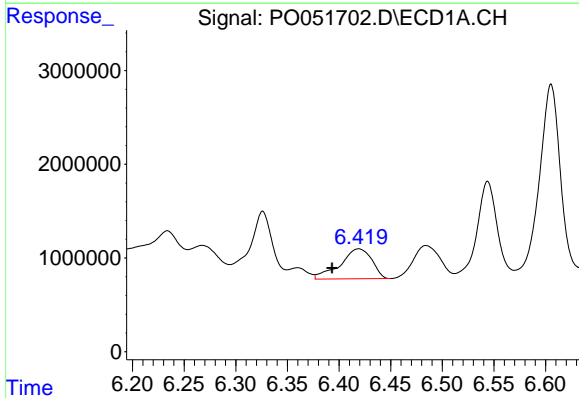
R.T.: 5.664 min
 Delta R.T.: 0.002 min
 Response: 4111789
 Conc: 311.38 ng/ml

Instrument :
 ECD_O
 ClientSampleId :



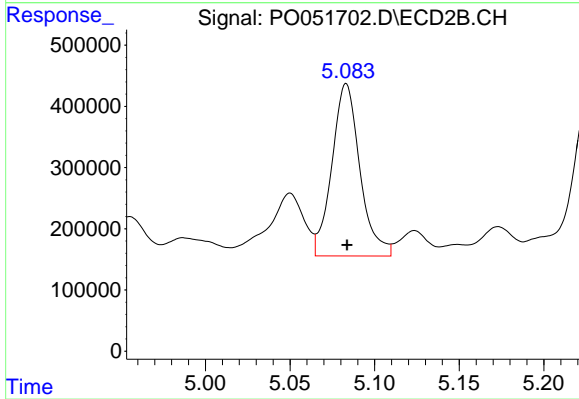
#19 AR-1242-4

R.T.: 4.593 min
 Delta R.T.: 0.001 min
 Response: 1397548
 Conc: 294.93 ng/ml



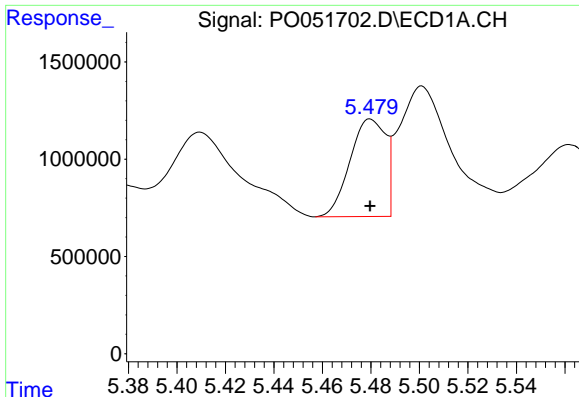
#20 AR-1242-5

R.T.: 6.419 min
 Delta R.T.: 0.026 min
 Response: 6843876
 Conc: 512.04 ng/ml



#20 AR-1242-5

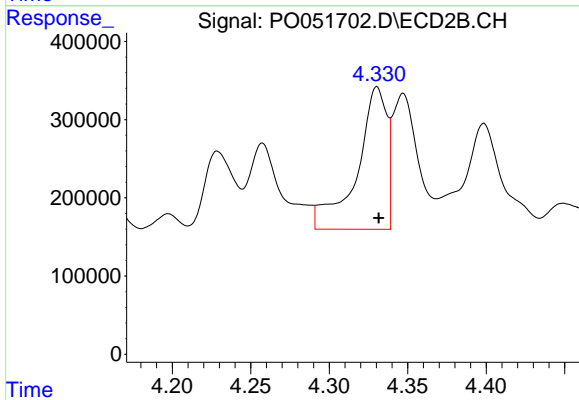
R.T.: 5.083 min
 Delta R.T.: 0.000 min
 Response: 3245314
 Conc: 538.39 ng/ml



#21 AR-1248-1

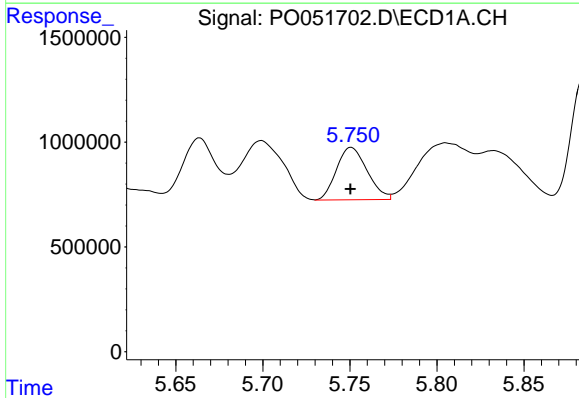
R.T.: 5.480 min
 Delta R.T.: 0.000 min
 Response: 5112880
 Conc: 332.11 ng/ml

Instrument :
 ECD_O
 ClientSampleId :



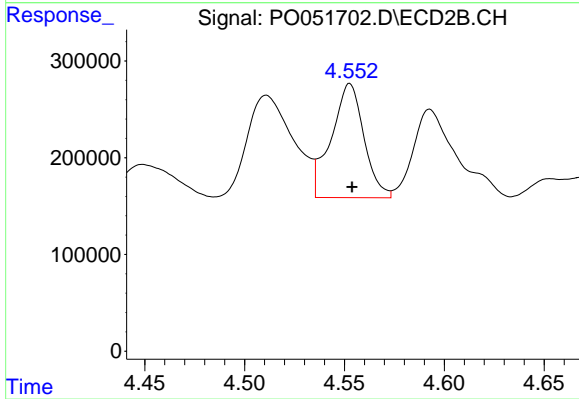
#21 AR-1248-1

R.T.: 4.330 min
 Delta R.T.: -0.001 min
 Response: 2422047
 Conc: 449.61 ng/ml



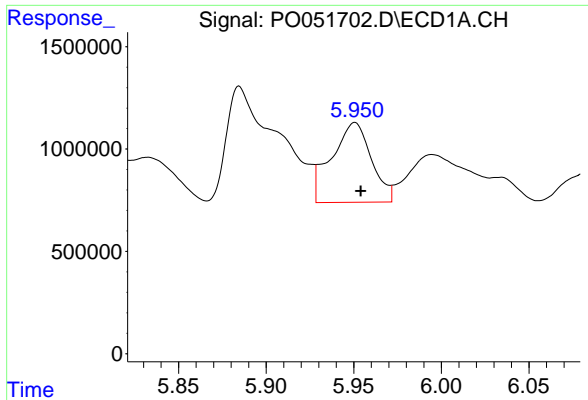
#22 AR-1248-2

R.T.: 5.751 min
 Delta R.T.: 0.000 min
 Response: 3063103
 Conc: 144.08 ng/ml



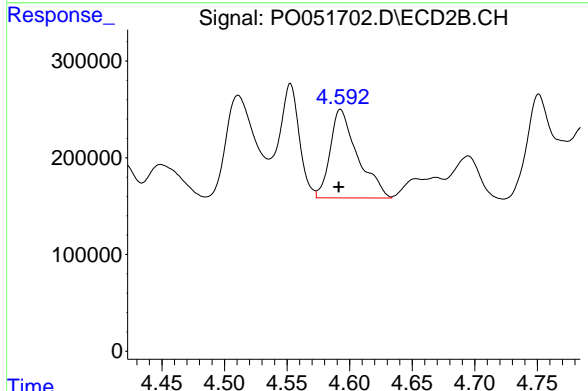
#22 AR-1248-2

R.T.: 4.553 min
 Delta R.T.: -0.001 min
 Response: 1347428
 Conc: 170.77 ng/ml

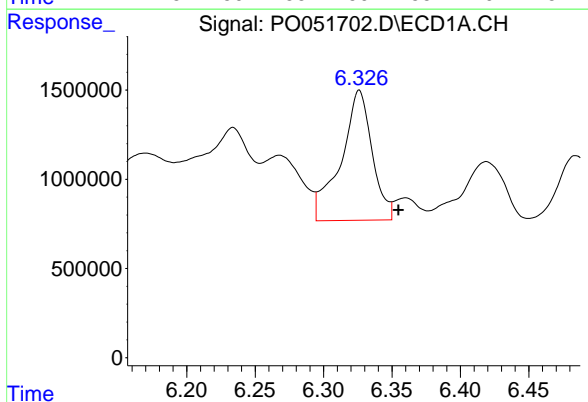


#23 AR-1248-3
 R.T.: 5.951 min
 Delta R.T.: -0.003 min
 Response: 6181179
 Conc: 260.52 ng/ml

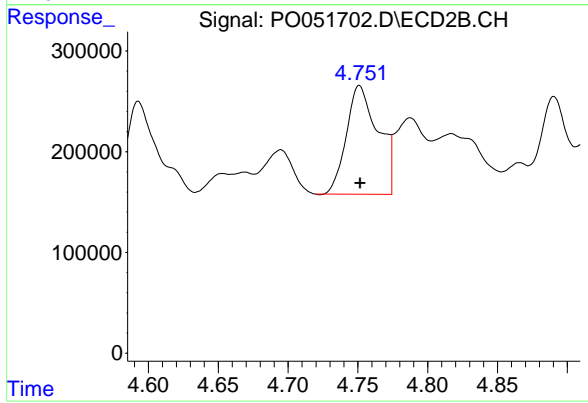
Instrument :
 ECD_O
 ClientSampleId :



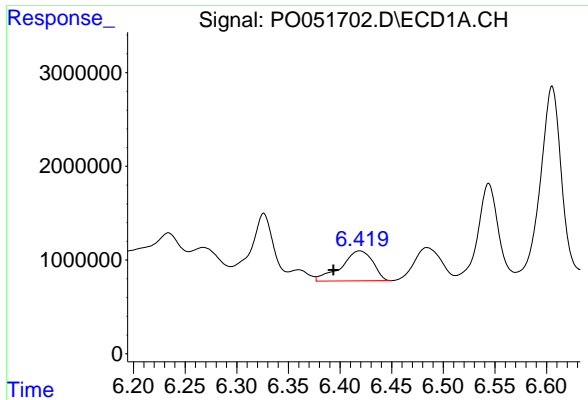
#23 AR-1248-3
 R.T.: 4.593 min
 Delta R.T.: 0.002 min
 Response: 1397548
 Conc: 178.27 ng/ml



#24 AR-1248-4
 R.T.: 6.326 min
 Delta R.T.: -0.029 min
 Response: 11620356
 Conc: 439.66 ng/ml



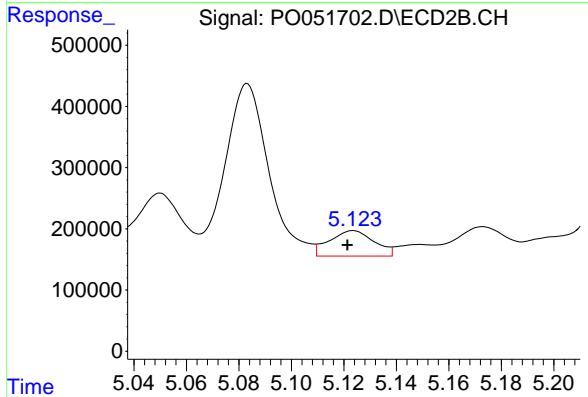
#24 AR-1248-4
 R.T.: 4.751 min
 Delta R.T.: 0.000 min
 Response: 1708973
 Conc: 176.15 ng/ml



#25 AR-1248-5

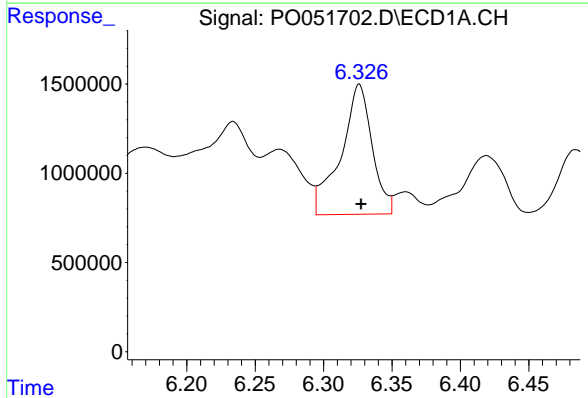
R.T.: 6.419 min
 Delta R.T.: 0.026 min
 Response: 6843876
 Conc: 272.91 ng/ml

Instrument :
 ECD_O
 ClientSampled :



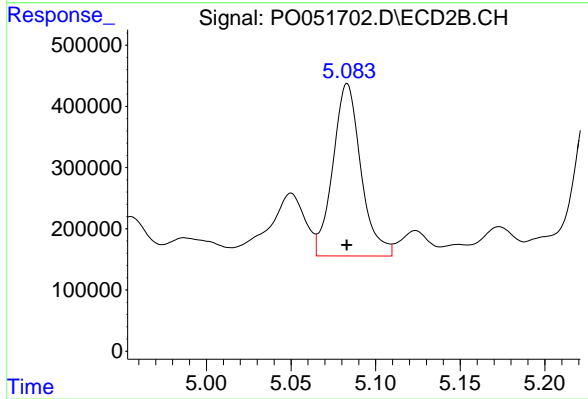
#25 AR-1248-5

R.T.: 5.124 min
 Delta R.T.: 0.002 min
 Response: 490897
 Conc: 51.99 ng/ml



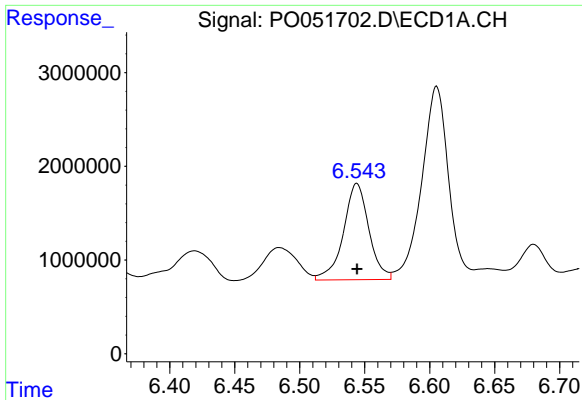
#26 AR-1254-1

R.T.: 6.326 min
 Delta R.T.: -0.001 min
 Response: 11620356
 Conc: 470.50 ng/ml



#26 AR-1254-1

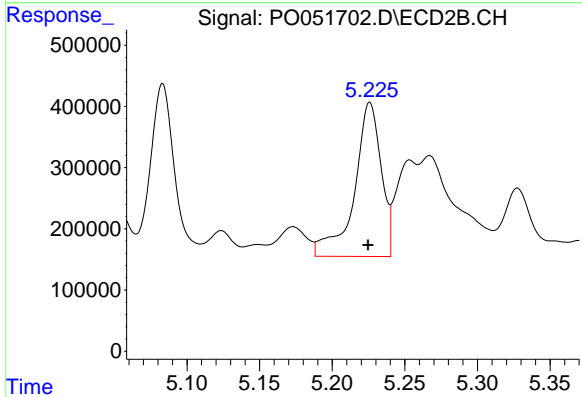
R.T.: 5.083 min
 Delta R.T.: 0.000 min
 Response: 3245314
 Conc: 236.06 ng/ml



#27 AR-1254-2

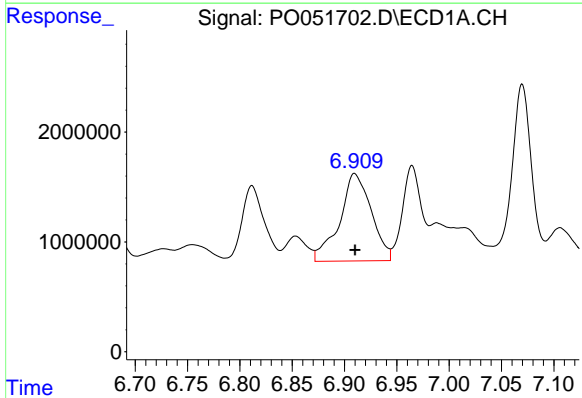
R.T.: 6.544 min
 Delta R.T.: 0.000 min
 Response: 14010416
 Conc: 359.74 ng/ml

Instrument :
 ECD_O
 ClientSampleId :



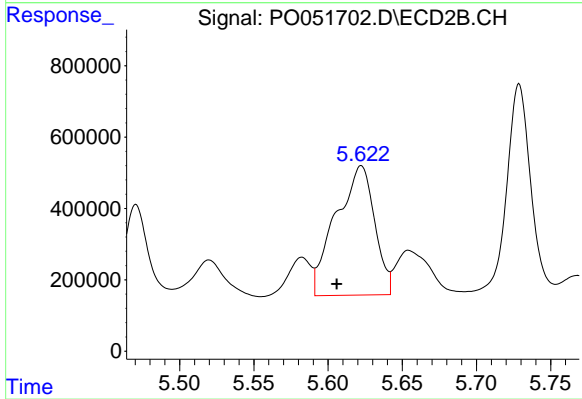
#27 AR-1254-2

R.T.: 5.226 min
 Delta R.T.: 0.001 min
 Response: 3242649
 Conc: 271.70 ng/ml



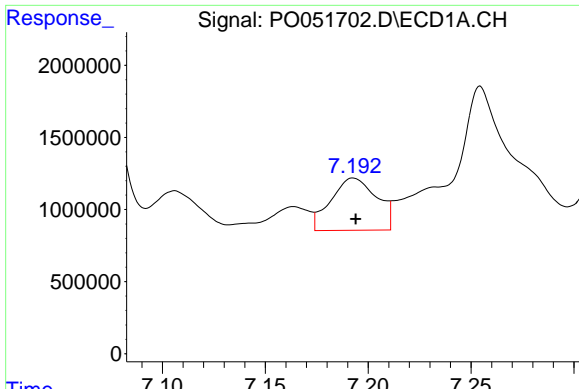
#28 AR-1254-3

R.T.: 6.910 min
 Delta R.T.: 0.000 min
 Response: 16730577
 Conc: 415.02 ng/ml



#28 AR-1254-3

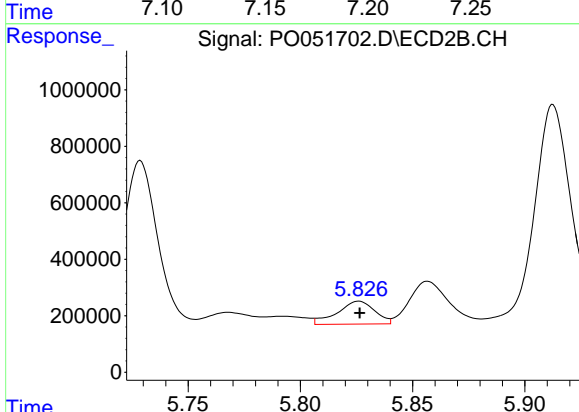
R.T.: 5.622 min
 Delta R.T.: 0.016 min
 Response: 6579443
 Conc: 350.18 ng/ml



#29 AR-1254-4

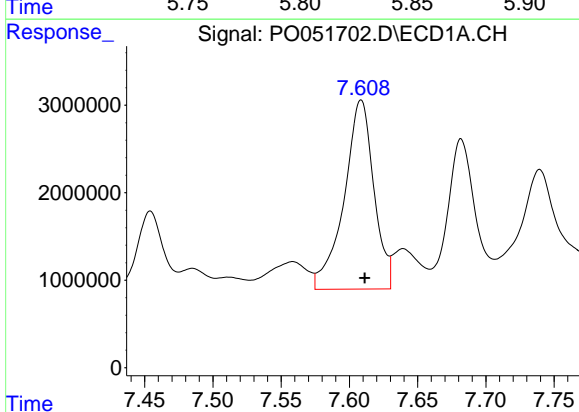
R.T.: 7.193 min
 Delta R.T.: -0.001 min
 Response: 5619312
 Conc: 180.16 ng/ml

Instrument :
 ECD_O
 ClientSampled :



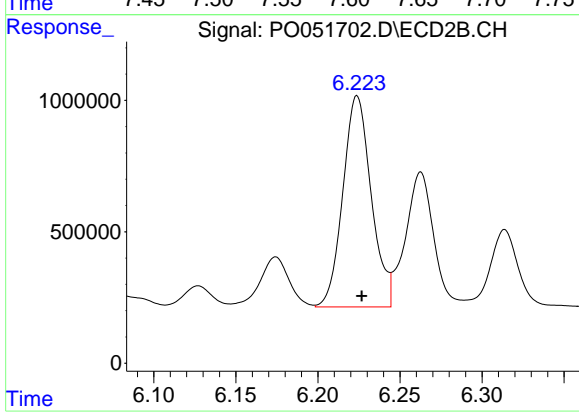
#29 AR-1254-4

R.T.: 5.826 min
 Delta R.T.: 0.000 min
 Response: 939654
 Conc: 82.38 ng/ml



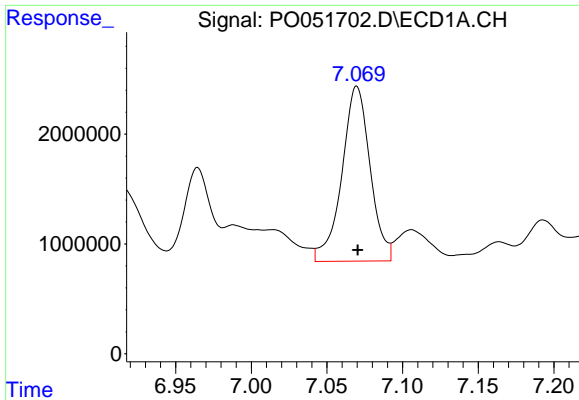
#30 AR-1254-5

R.T.: 7.609 min
 Delta R.T.: -0.003 min
 Response: 32873110
 Conc: 1067.60 ng/ml



#30 AR-1254-5

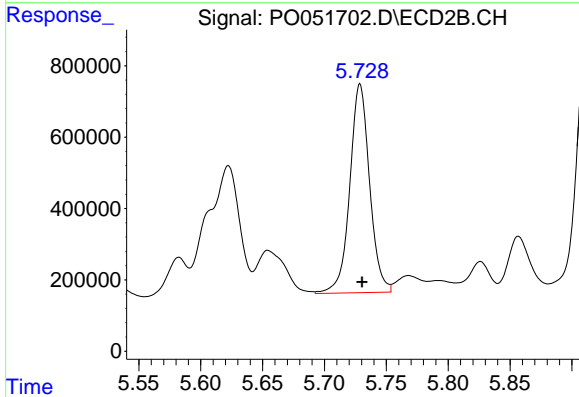
R.T.: 6.224 min
 Delta R.T.: -0.003 min
 Response: 9672718
 Conc: 612.89 ng/ml



#31 AR-1260-1

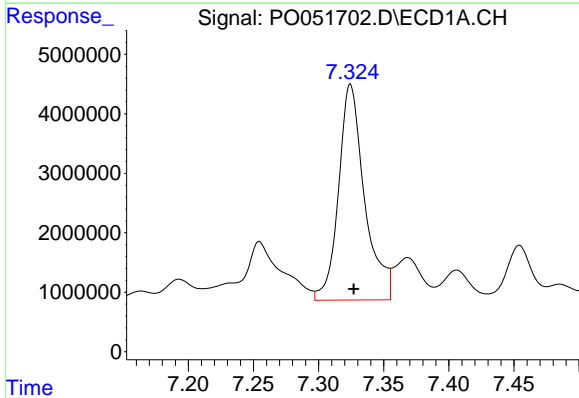
R.T.: 7.070 min
 Delta R.T.: 0.000 min
 Response: 20704662
 Conc: 687.66 ng/ml

Instrument :
 ECD_O
 ClientSampled :



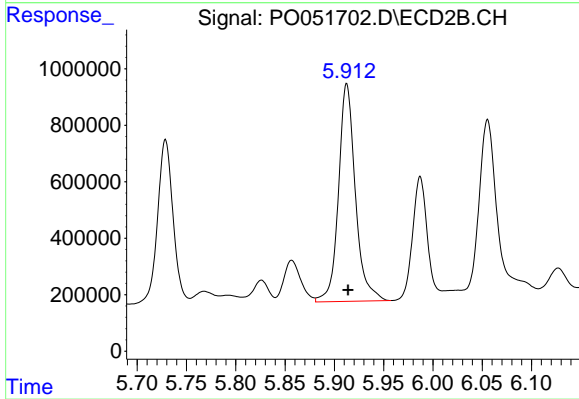
#31 AR-1260-1

R.T.: 5.729 min
 Delta R.T.: -0.002 min
 Response: 6510457
 Conc: 479.90 ng/ml



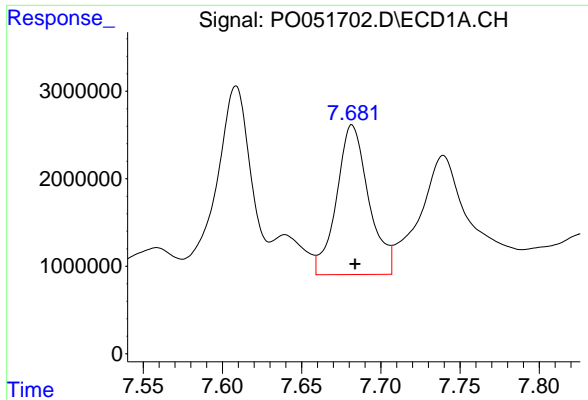
#32 AR-1260-2

R.T.: 7.324 min
 Delta R.T.: -0.003 min
 Response: 50421753
 Conc: 1194.37 ng/ml



#32 AR-1260-2

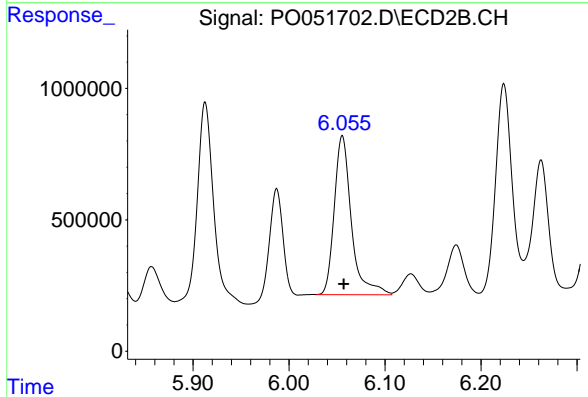
R.T.: 5.913 min
 Delta R.T.: -0.002 min
 Response: 9192496
 Conc: 529.73 ng/ml



#33 AR-1260-3

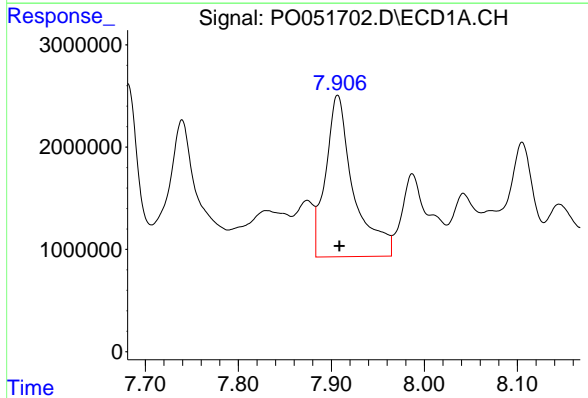
R.T.: 7.682 min
 Delta R.T.: -0.002 min
 Response: 24204738
 Conc: 833.12 ng/ml

Instrument :
 ECD_O
 ClientSampled :



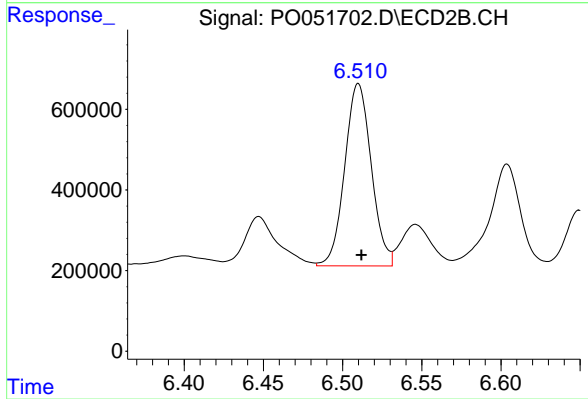
#33 AR-1260-3

R.T.: 6.055 min
 Delta R.T.: -0.001 min
 Response: 7506352
 Conc: 490.03 ng/ml



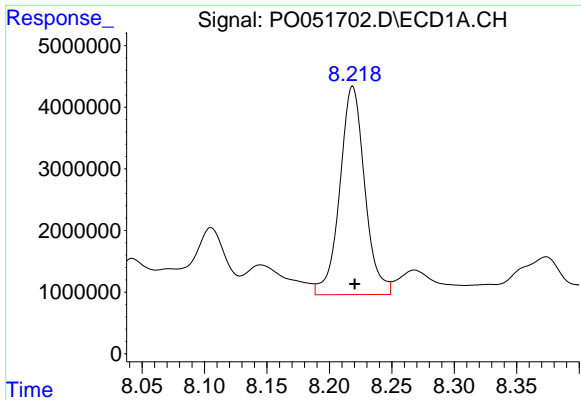
#34 AR-1260-4

R.T.: 7.907 min
 Delta R.T.: -0.002 min
 Response: 32838121
 Conc: 1194.04 ng/ml



#34 AR-1260-4

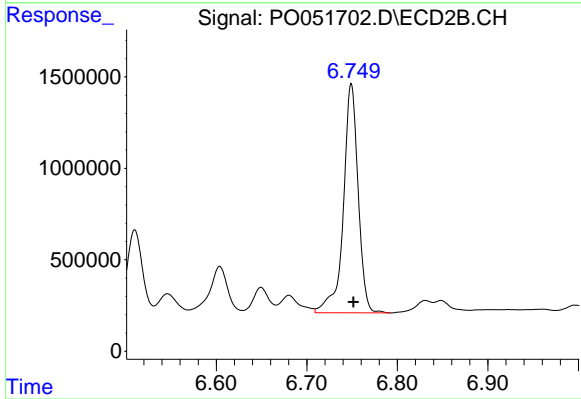
R.T.: 6.510 min
 Delta R.T.: -0.002 min
 Response: 5278417
 Conc: 519.41 ng/ml



#35 AR-1260-5

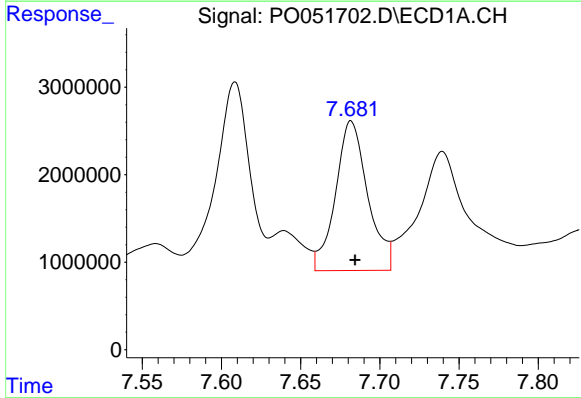
R.T.: 8.219 min
Delta R.T.: -0.002 min
Response: 47019456
Conc: 816.21 ng/ml

Instrument :
ECD_O
ClientSampleId :



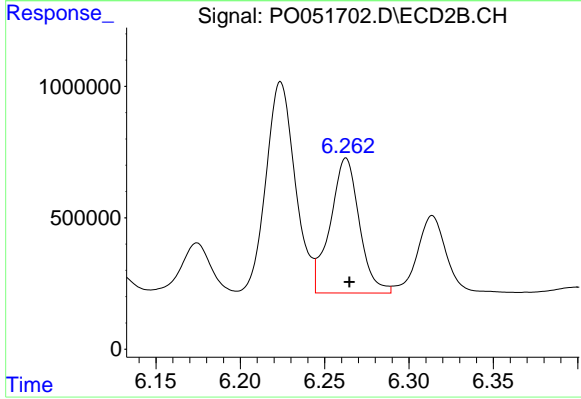
#35 AR-1260-5

R.T.: 6.749 min
Delta R.T.: -0.002 min
Response: 14243196
Conc: 551.81 ng/ml



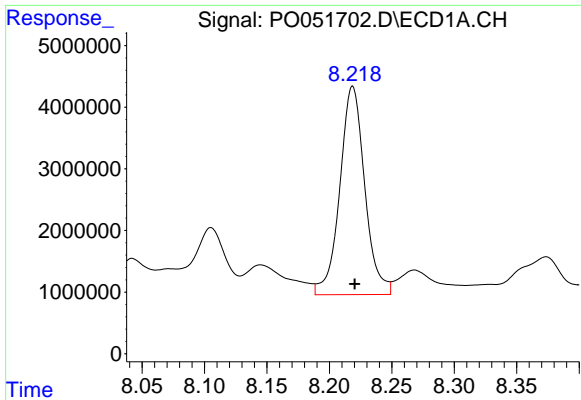
#36 AR-1262-1

R.T.: 7.682 min
Delta R.T.: -0.002 min
Response: 24204738
Conc: 516.77 ng/ml



#36 AR-1262-1

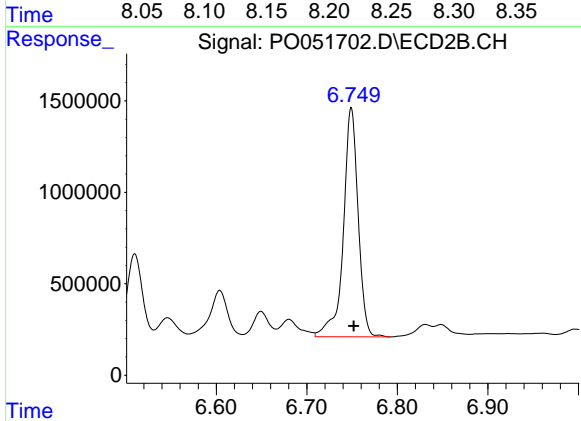
R.T.: 6.263 min
Delta R.T.: -0.002 min
Response: 6172856
Conc: 330.41 ng/ml



#37 AR-1262-2

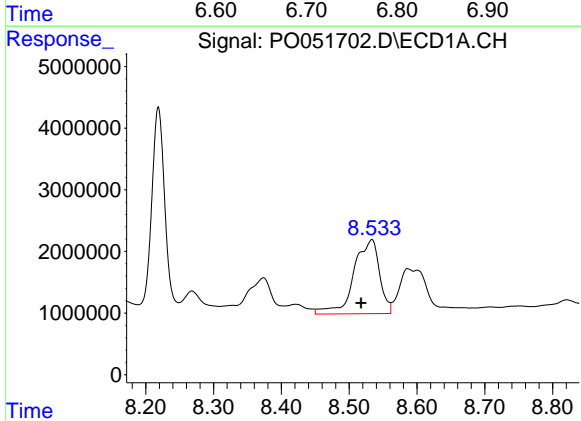
R.T.: 8.219 min
 Delta R.T.: -0.002 min
 Response: 47019456
 Conc: 672.62 ng/ml

Instrument :
 ECD_O
 ClientSampleId :



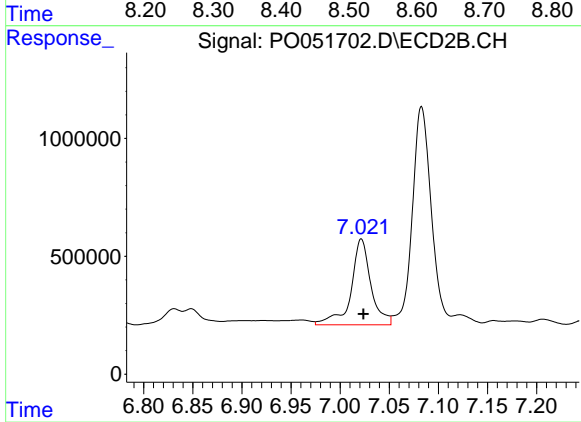
#37 AR-1262-2

R.T.: 6.749 min
 Delta R.T.: -0.003 min
 Response: 14243196
 Conc: 472.14 ng/ml



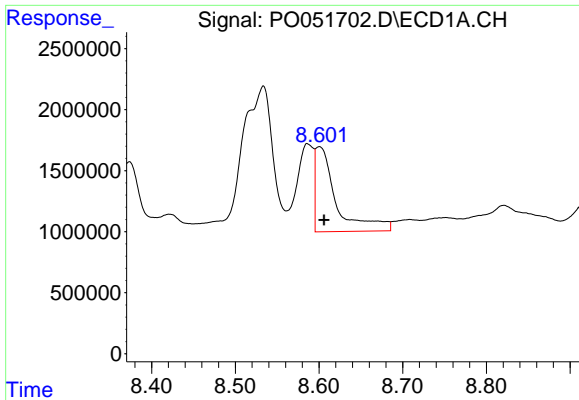
#38 AR-1262-3

R.T.: 8.534 min
 Delta R.T.: 0.016 min
 Response: 31592790
 Conc: 716.15 ng/ml



#38 AR-1262-3

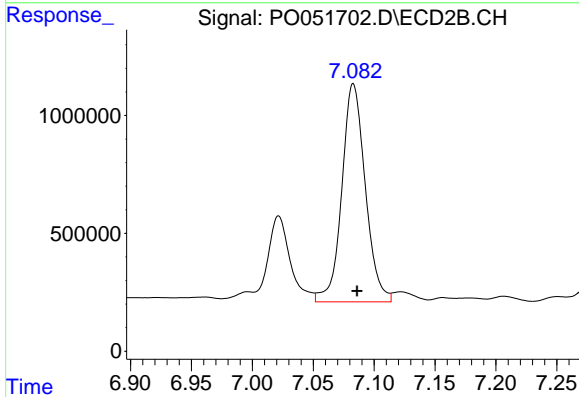
R.T.: 7.022 min
 Delta R.T.: -0.002 min
 Response: 5105894
 Conc: 409.10 ng/ml



#39 AR-1262-4

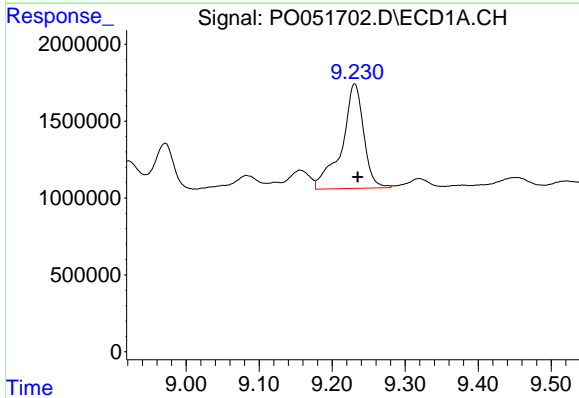
R.T.: 8.600 min
 Delta R.T.: -0.006 min
 Response: 12093952
 Conc: 349.15 ng/ml

Instrument :
 ECD_O
 ClientSampleId :



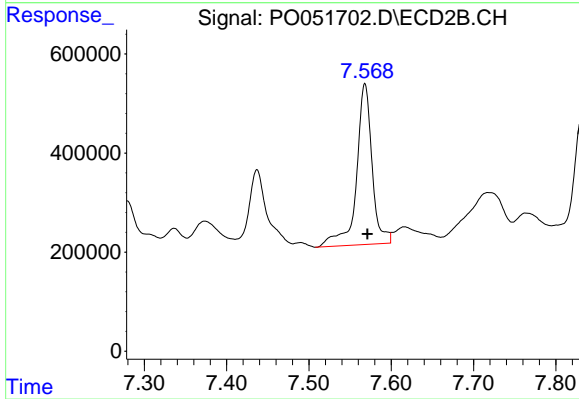
#39 AR-1262-4

R.T.: 7.083 min
 Delta R.T.: -0.003 min
 Response: 12411851
 Conc: 568.68 ng/ml



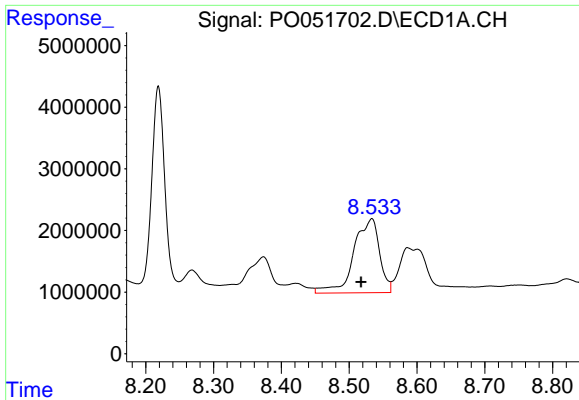
#40 AR-1262-5

R.T.: 9.231 min
 Delta R.T.: -0.004 min
 Response: 14151947
 Conc: 685.18 ng/ml



#40 AR-1262-5

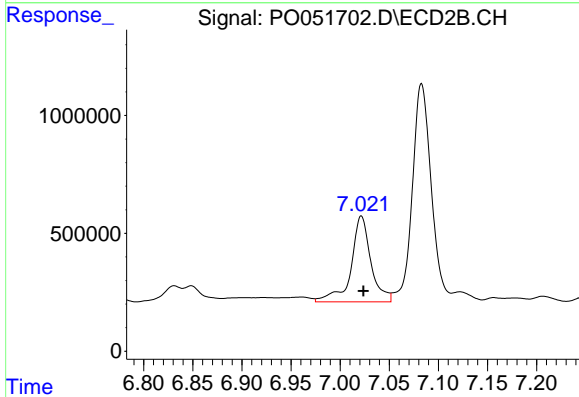
R.T.: 7.568 min
 Delta R.T.: -0.003 min
 Response: 4289302
 Conc: 482.75 ng/ml



#41 AR-1268-1

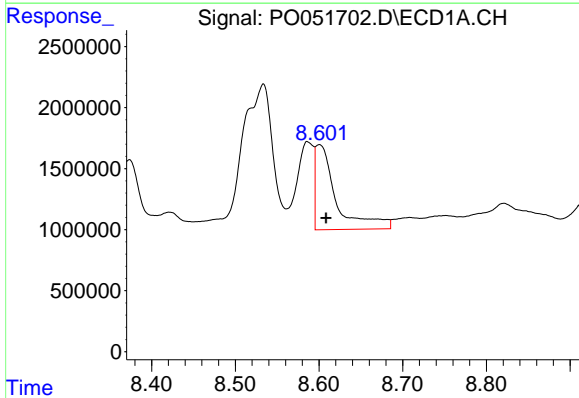
R.T.: 8.534 min
 Delta R.T.: 0.016 min
 Response: 31592790
 Conc: 340.69 ng/ml

Instrument :
 ECD_O
 ClientSampled :



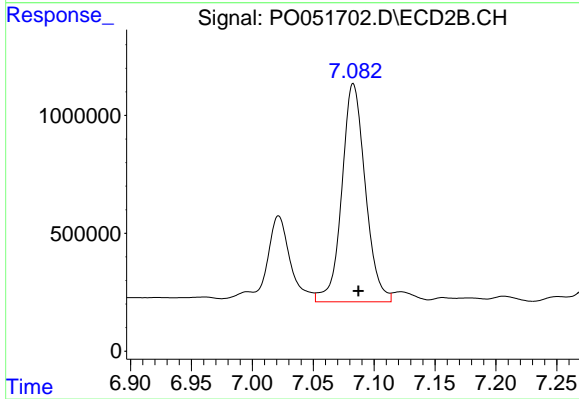
#41 AR-1268-1

R.T.: 7.022 min
 Delta R.T.: -0.002 min
 Response: 5105894
 Conc: 129.32 ng/ml



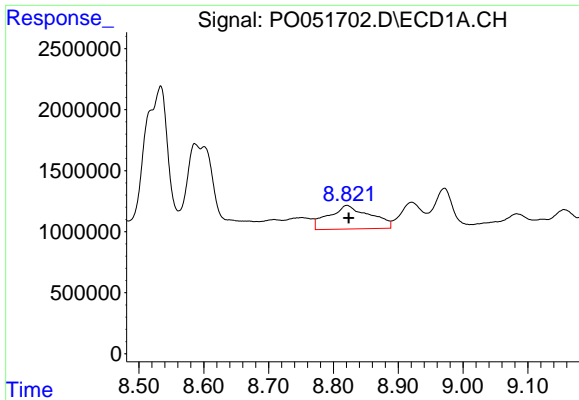
#42 AR-1268-2

R.T.: 8.600 min
 Delta R.T.: -0.008 min
 Response: 12093952
 Conc: 151.57 ng/ml



#42 AR-1268-2

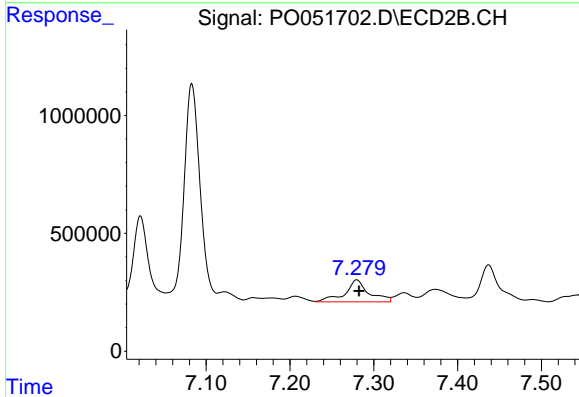
R.T.: 7.083 min
 Delta R.T.: -0.004 min
 Response: 12411851
 Conc: 336.33 ng/ml



#43 AR-1268-3

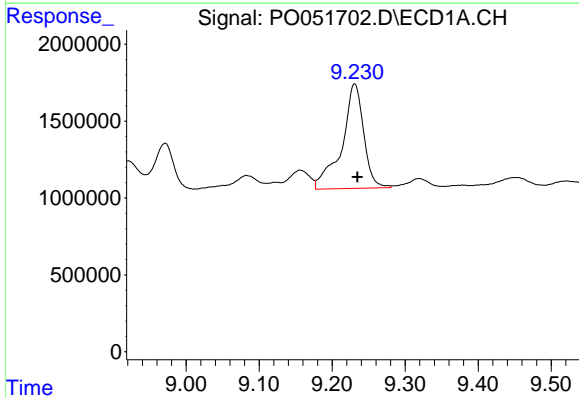
R.T.: 8.821 min
 Delta R.T.: -0.003 min
 Response: 8607043
 Conc: 122.96 ng/ml

Instrument :
 ECD_O
 ClientSampleId :



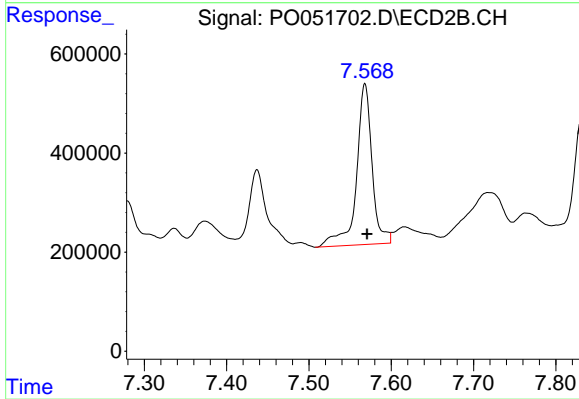
#43 AR-1268-3

R.T.: 7.280 min
 Delta R.T.: -0.003 min
 Response: 1836526
 Conc: 55.70 ng/ml



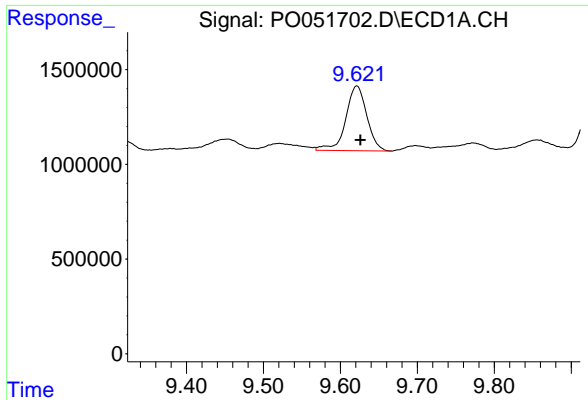
#44 AR-1268-4

R.T.: 9.231 min
 Delta R.T.: -0.004 min
 Response: 14151947
 Conc: 571.33 ng/ml



#44 AR-1268-4

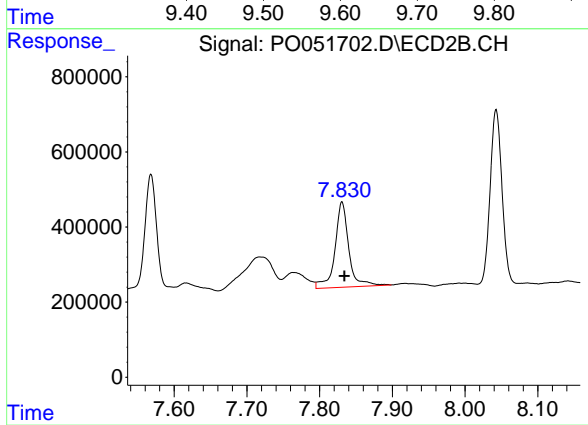
R.T.: 7.568 min
 Delta R.T.: -0.003 min
 Response: 4289302
 Conc: 381.22 ng/ml



#45 AR-1268-5

R.T.: 9.621 min
Delta R.T.: -0.004 min
Response: 6477029
Conc: 34.27 ng/ml

Instrument :
ECD_O
ClientSampled :



#45 AR-1268-5

R.T.: 7.831 min
Delta R.T.: -0.003 min
Response: 2994498
Conc: 34.90 ng/ml