

Data Path : Z:\pestpcbsrv\HPCHEM1\ECD_0\Data\PO112118\
 Data File : PO051706.D
 Signal(s) : Signal #1: ECD1A.CH Signal #2: ECD2B.CH
 Acq On : 21 Nov 2018 12:25
 Operator : SM/SJ
 Sample : I.BLK
 Misc :
 ALS Vial : 2 Sample Multiplier: 1

Instrument :
 ECD_0
 ClientSampleId :

Integration File signal 1: autoint1.e
 Integration File signal 2: autoint2.e
 Quant Time: Nov 21 23:45:58 2018
 Quant Method : Z:\pestpcbsrv\HPCHEM1\ECD_0\methods\PO112018.M
 Quant Title : GC EXTRACTABLES
 QLast Update : Wed Nov 21 00:55:28 2018
 Response via : Initial Calibration
 Integrator: ChemStation 6890 Scale Mode: Small noise peaks clipped

Volume Inj. : 2 µl
 Signal #1 Phase : ZB-MR1 Signal #2 Phase: ZB-MR2
 Signal #1 Info : 30Mx0.32mmx 0.50µ Signal #2 Info : 30M x 0.32mm x 0.25µm

Compound	RT#1	RT#2	Resp#1	Resp#2	ng/ml	ng/ml

System Monitoring Compounds						
1) SA Tetrachlo...	4.317	3.321	17373784	5303417	23.079	22.156
2) SA Decachlor...	9.936	8.043	9240451	4419967	19.920	20.446
Target Compounds						
7) L1 AR-1016-5	0.000	4.763	0	84655	N.D.	12.972 #
15) L3 AR-1232-5	0.000	4.763	0	84655	N.D.	33.443 #
24) L5 AR-1248-4	0.000	4.763	0	84655	N.D.	8.726 #
28) L6 AR-1254-3	6.924	0.000	470455	0	11.670	N.D. #
32) L7 AR-1260-2	0.000	5.898	0	228419	N.D.	13.163 #
33) L7 AR-1260-3	7.741	0.000	410329	0	14.124	N.D. #
36) L8 AR-1262-1	7.741	0.000	410329	0	8.761	N.D. #
39) L8 AR-1262-4	8.665	0.000	2463732	0	71.128	N.D. #
42) L9 AR-1268-2	8.665	0.000	2463732	0	30.878	N.D. #

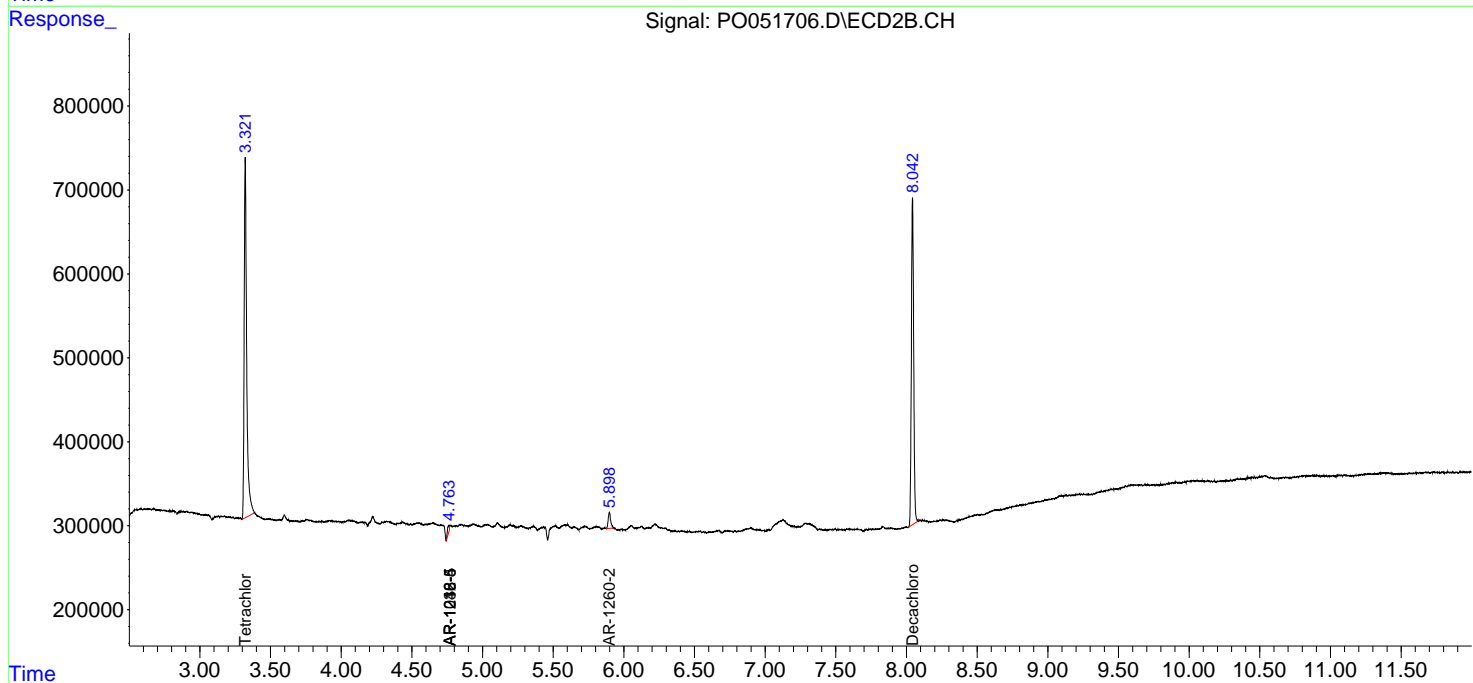
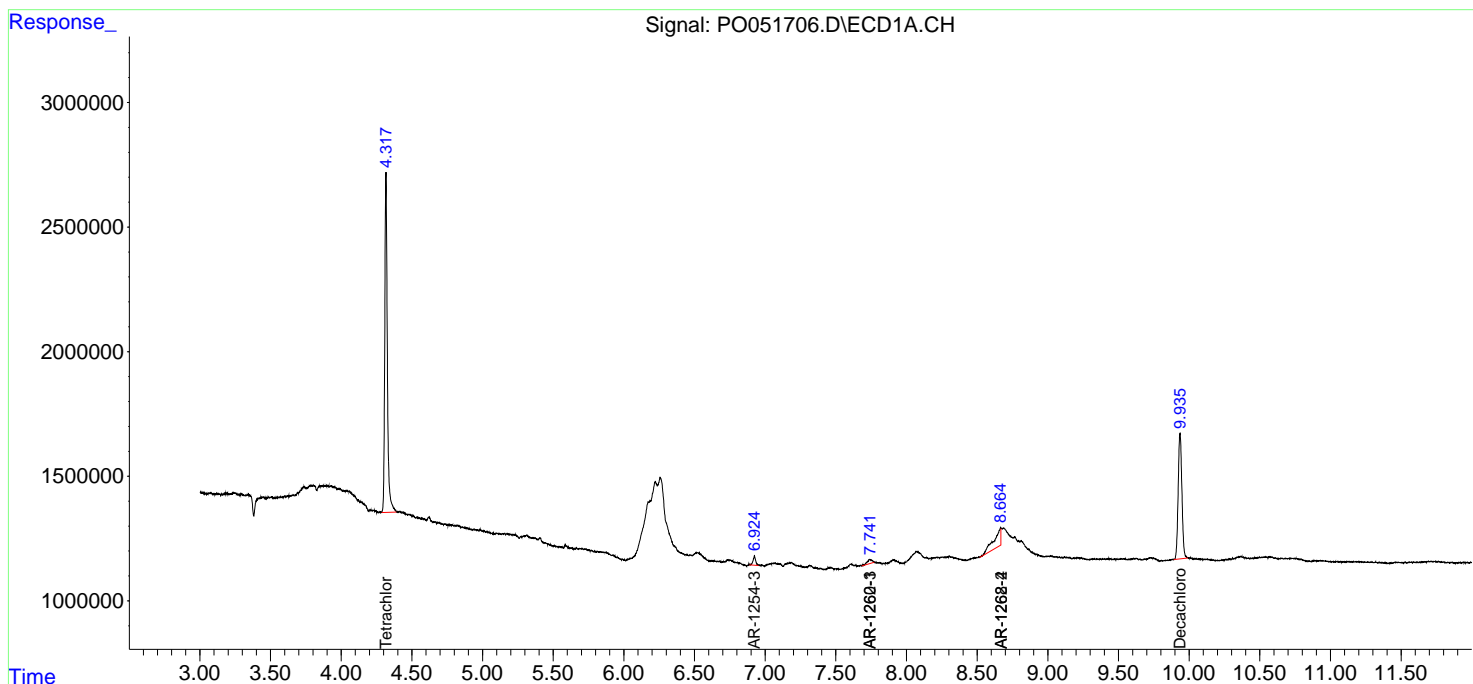
(f)=RT Delta > 1/2 Window (#)=Amounts differ by > 25% (m)=manual int.

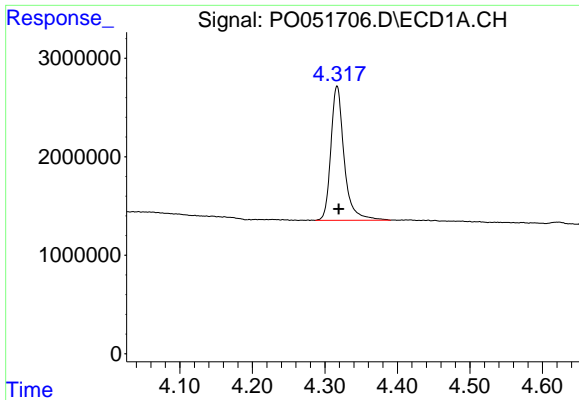
Data Path : Z:\pestpcbsrv\HPCHEM1\ECD_O\Data\PO112118\
 Data File : PO051706.D
 Signal(s) : Signal #1: ECD1A.CH Signal #2: ECD2B.CH
 Acq On : 21 Nov 2018 12:25
 Operator : SM/SJ
 Sample : I.BLK
 Misc :
 ALS Vial : 2 Sample Multiplier: 1

Instrument :
 ECD_O
 ClientSampled :

Integration File signal 1: autoint1.e
 Integration File signal 2: autoint2.e
 Quant Time: Nov 21 23:45:58 2018
 Quant Method : Z:\pestpcbsrv\HPCHEM1\ECD_O\methods\PO112018.M
 Quant Title : GC EXTRACTABLES
 QLast Update : Wed Nov 21 00:55:28 2018
 Response via : Initial Calibration
 Integrator: ChemStation 6890 Scale Mode: Small noise peaks clipped

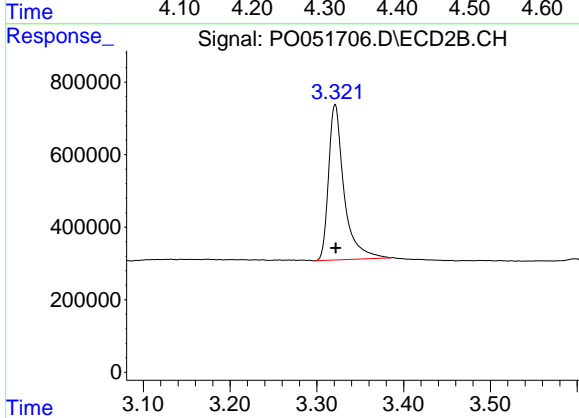
Volume Inj. : 2 µl
 Signal #1 Phase : ZB-MR1 Signal #2 Phase: ZB-MR2
 Signal #1 Info : 30Mx0.32mmx 0.50µ Signal #2 Info : 30M x 0.32mm x 0.25µm



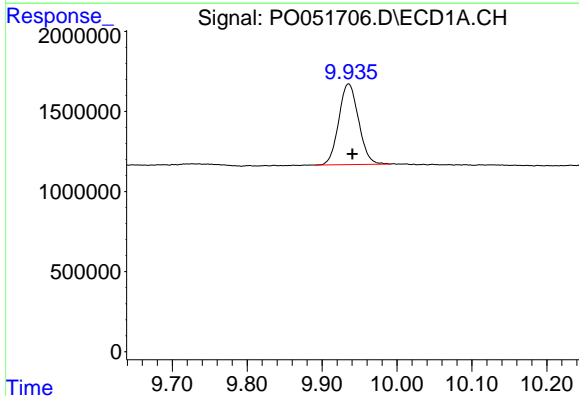


#1 Tetrachloro-m-xylene
 R.T.: 4.317 min
 Delta R.T.: -0.002 min
 Response: 17373784
 Conc: 23.08 ng/ml

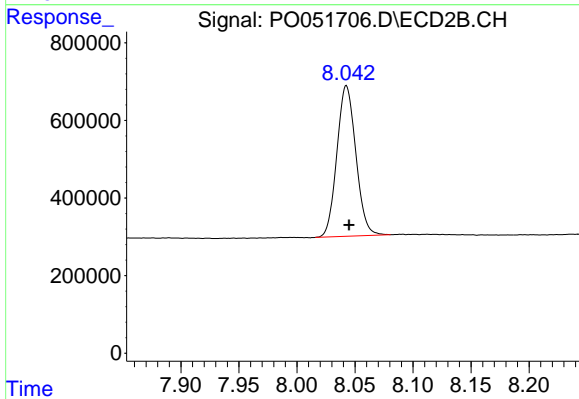
Instrument :
 ECD_O
 ClientSampleId :



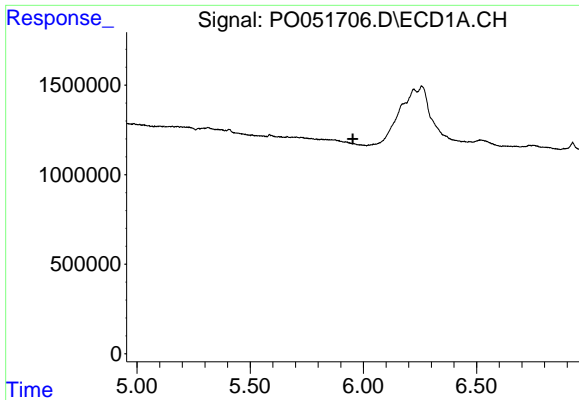
#1 Tetrachloro-m-xylene
 R.T.: 3.321 min
 Delta R.T.: 0.000 min
 Response: 5303417
 Conc: 22.16 ng/ml



#2 Decachlorobiphenyl
 R.T.: 9.936 min
 Delta R.T.: -0.005 min
 Response: 9240451
 Conc: 19.92 ng/ml



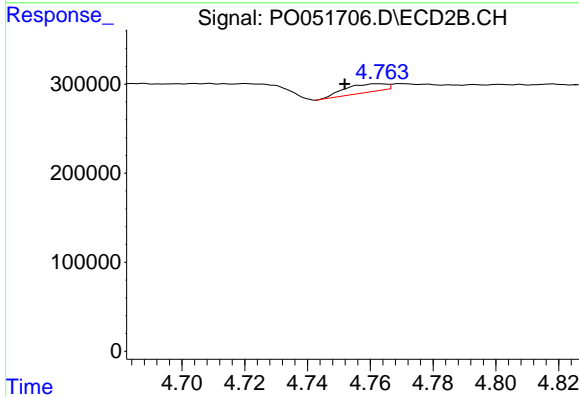
#2 Decachlorobiphenyl
 R.T.: 8.043 min
 Delta R.T.: -0.002 min
 Response: 4419967
 Conc: 20.45 ng/ml



#7 AR-1016-5

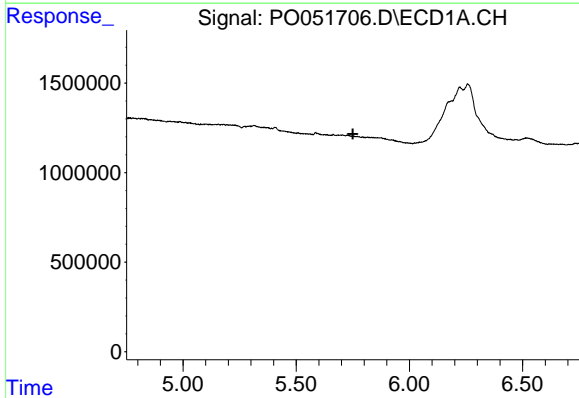
R.T.: 0.000 min
 Exp R.T. : 5.953 min
 Response: 0
 Conc: N.D.

Instrument :
 ECD_O
 ClientSampled :



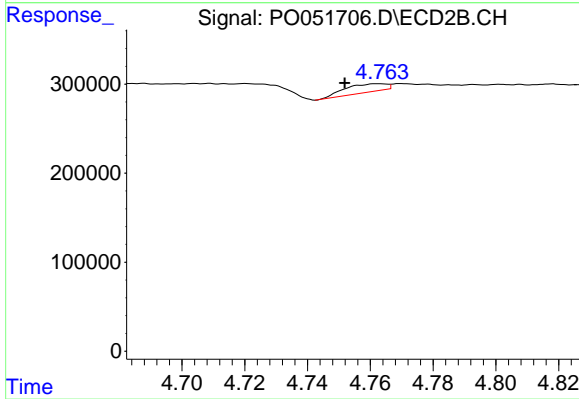
#7 AR-1016-5

R.T.: 4.763 min
 Delta R.T.: 0.011 min
 Response: 84655
 Conc: 12.97 ng/ml



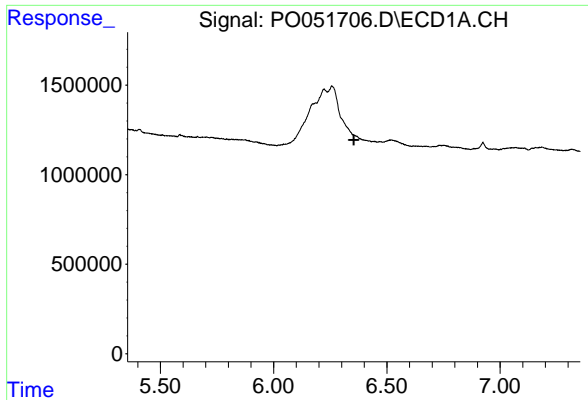
#15 AR-1232-5

R.T.: 0.000 min
 Exp R.T. : 5.750 min
 Response: 0
 Conc: N.D.



#15 AR-1232-5

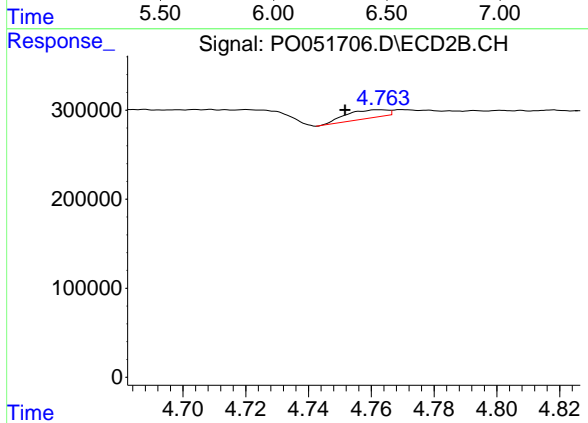
R.T.: 4.763 min
 Delta R.T.: 0.011 min
 Response: 84655
 Conc: 33.44 ng/ml



#24 AR-1248-4

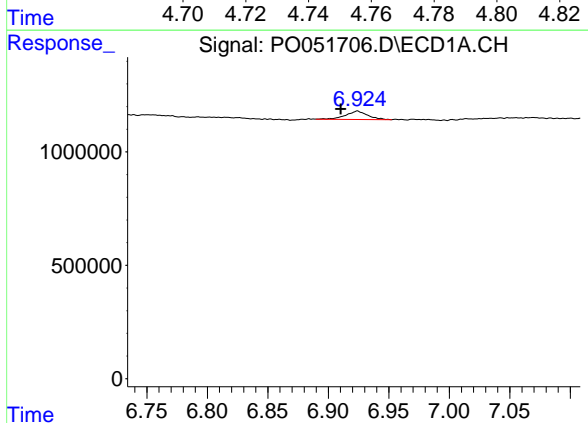
R.T.: 0.000 min
 Exp R.T.: 6.355 min
 Response: 0
 Conc: N.D.

Instrument :
 ECD_O
 ClientSampled :



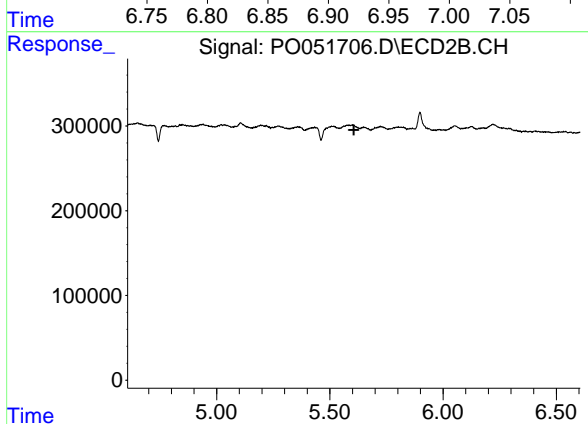
#24 AR-1248-4

R.T.: 4.763 min
 Delta R.T.: 0.011 min
 Response: 84655
 Conc: 8.73 ng/ml



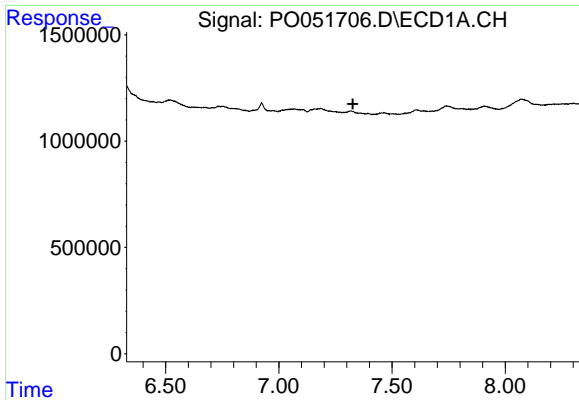
#28 AR-1254-3

R.T.: 6.924 min
 Delta R.T.: 0.014 min
 Response: 470455
 Conc: 11.67 ng/ml



#28 AR-1254-3

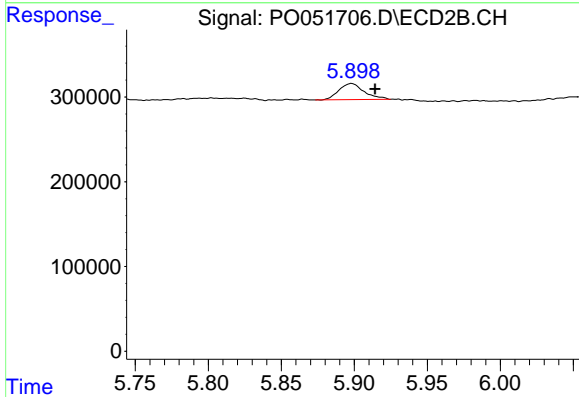
R.T.: 0.000 min
 Exp R.T.: 5.606 min
 Response: 0
 Conc: N.D.



#32 AR-1260-2

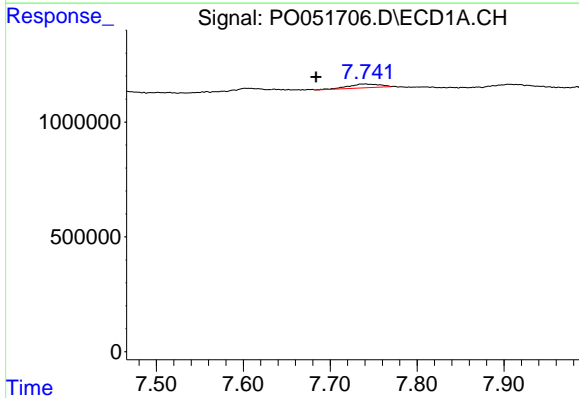
R.T.: 0.000 min
 Exp R.T.: 7.327 min
 Response: 0
 Conc: N.D.

Instrument :
 ECD_O
 ClientSampleId :



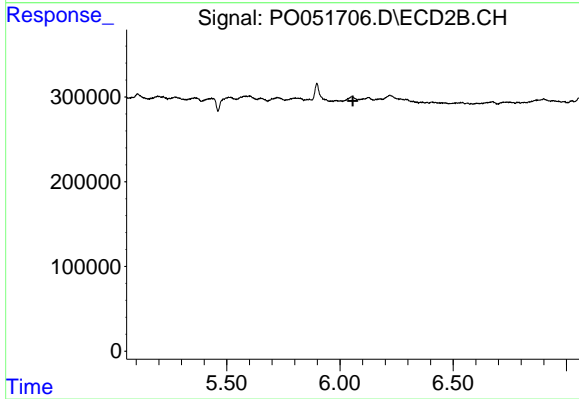
#32 AR-1260-2

R.T.: 5.898 min
 Delta R.T.: -0.016 min
 Response: 228419
 Conc: 13.16 ng/ml



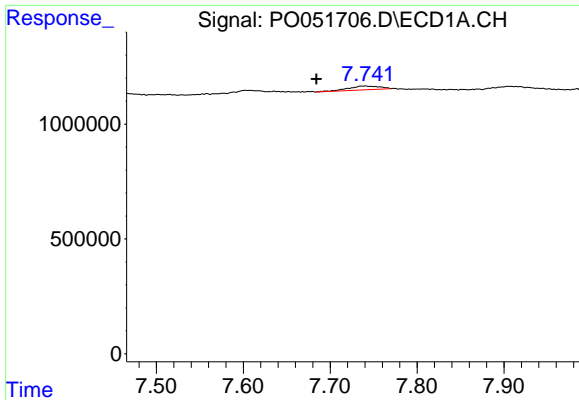
#33 AR-1260-3

R.T.: 7.741 min
 Delta R.T.: 0.058 min
 Response: 410329
 Conc: 14.12 ng/ml



#33 AR-1260-3

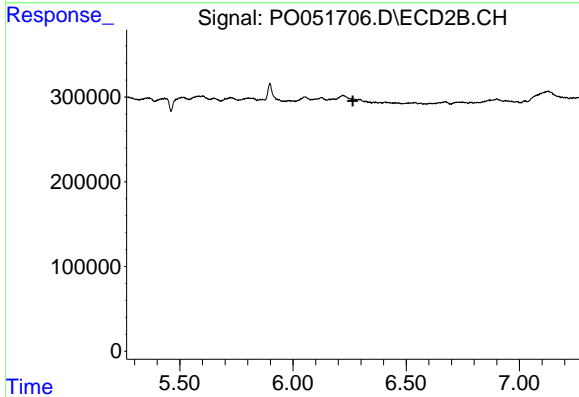
R.T.: 0.000 min
 Exp R.T.: 6.057 min
 Response: 0
 Conc: N.D.



#36 AR-1262-1

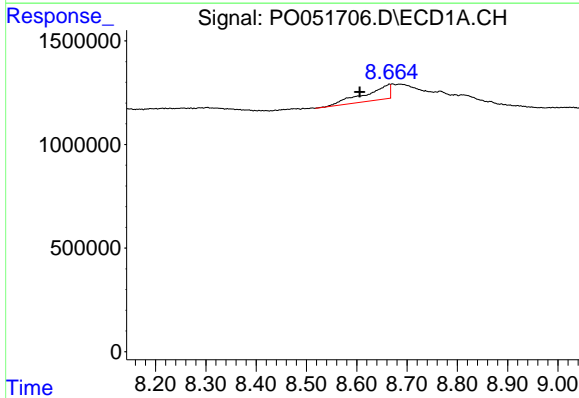
R.T.: 7.741 min
 Delta R.T.: 0.057 min
 Response: 410329
 Conc: 8.76 ng/ml

Instrument :
 ECD_O
 ClientSampleId :



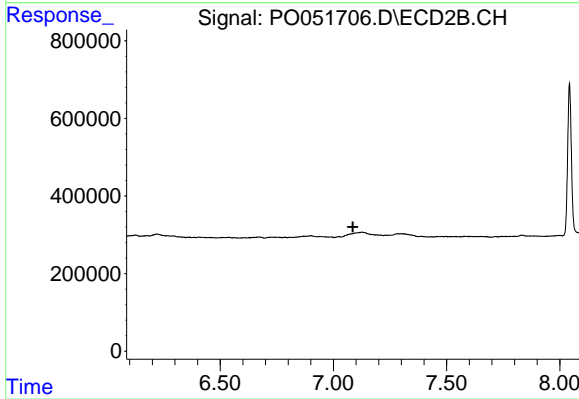
#36 AR-1262-1

R.T.: 0.000 min
 Exp R.T. : 6.265 min
 Response: 0
 Conc: N.D.



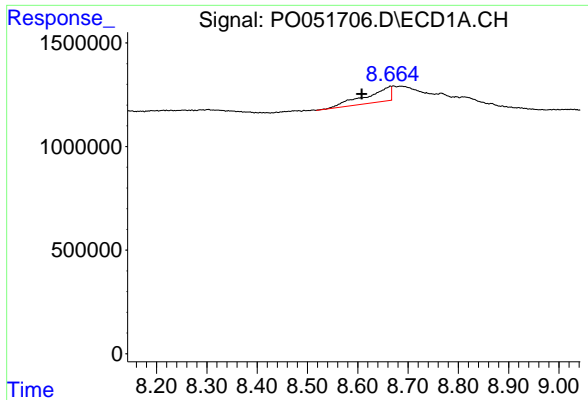
#39 AR-1262-4

R.T.: 8.665 min
 Delta R.T.: 0.059 min
 Response: 2463732
 Conc: 71.13 ng/ml



#39 AR-1262-4

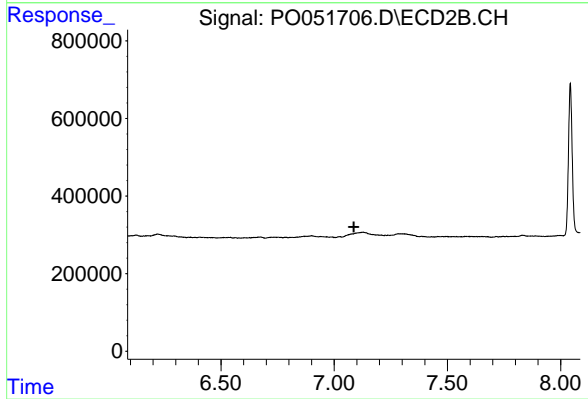
R.T.: 0.000 min
 Exp R.T. : 7.086 min
 Response: 0
 Conc: N.D.



#42 AR-1268-2

R.T.: 8.665 min
Delta R.T.: 0.056 min
Response: 2463732
Conc: 30.88 ng/ml

Instrument :
ECD_O
ClientSampleId :



#42 AR-1268-2

R.T.: 0.000 min
Exp R.T. : 7.087 min
Response: 0
Conc: N.D.