

Data Path : Z:\pestpcbsrv\HPCHEM1\ECD_0\Data\PO112118\
 Data File : PO051708.D
 Signal(s) : Signal #1: ECD1A.CH Signal #2: ECD2B.CH
 Acq On : 21 Nov 2018 13:05
 Operator : SM/SJ
 Sample : J6024-01
 Misc :
 ALS Vial : 4 Sample Multiplier: 1

Instrument :
 ECD_0
 ClientSampleId :

Integration File signal 1: autoint1.e
 Integration File signal 2: autoint2.e
 Quant Time: Nov 21 23:46:21 2018
 Quant Method : Z:\pestpcbsrv\HPCHEM1\ECD_0\methods\PO112018.M
 Quant Title : GC EXTRACTABLES
 QLast Update : Wed Nov 21 00:55:28 2018
 Response via : Initial Calibration
 Integrator: ChemStation 6890 Scale Mode: Small noise peaks clipped

Volume Inj. : 2 µl
 Signal #1 Phase : ZB-MR2 Signal #2 Phase: ZB-MR2
 Signal #1 Info : 30Mx0.32mmx 0.50µ Signal #2 Info : 30M x 0.32mm x 0.25µm

Compound	RT#1	RT#2	Resp#1	Resp#2	ng/ml	ng/ml

System Monitoring Compounds						
1) SA Tetrachlo...	4.326	3.322	14729734	4183114	19.567	17.476
2) SA Decachlor...	9.950	8.046	5876004	2799114	12.667	12.948
Target Compounds						
3) L1 AR-1016-1	5.419	0.000	1448578	0	64.101	N.D. #
7) L1 AR-1016-5	0.000	4.770	0	22261	N.D.	3.411 #
10) L2 AR-1221-3	0.000	3.721	0	212980	N.D.	38.756 #
11) L3 AR-1232-1	0.000	3.721	0	212980	N.D.	45.996 #
15) L3 AR-1232-5	0.000	4.770	0	22261	N.D.	8.794 #
16) L4 AR-1242-1	5.419	0.000	1448578	0	80.676	N.D. #
20) L4 AR-1242-5	6.335	5.084	444349	280998	33.245	46.617 #
21) L5 AR-1248-1	5.419	0.000	1448578	0	94.094	N.D. #
24) L5 AR-1248-4	6.335	4.770	444349	22261	16.812	2.295 #
25) L5 AR-1248-5	6.335	5.084	444349	280998	17.719	29.762 #
26) L6 AR-1254-1	6.335	5.084	444349	280998	17.991	20.439
27) L6 AR-1254-2	6.552	5.226	1083707	261665	27.826	21.925
28) L6 AR-1254-3	6.923	5.606	2339333	1886098	58.030	100.383 #
29) L6 AR-1254-4	7.203	5.785	758328	358731	24.313	31.452 #
30) L6 AR-1254-5	7.619	6.227	836072	694078	27.153	43.979 #
31) L7 AR-1260-1	7.077	5.731	578742	1629349	19.222	120.104 #
32) L7 AR-1260-2	7.333	5.913	824637	790045	19.534	45.527 #
33) L7 AR-1260-3	7.619	6.056	836072	309623	28.778	20.213 #
34) L7 AR-1260-4	7.914	0.000	521181	0	18.951	N.D. #
35) L7 AR-1260-5	8.227	6.751	418444	192272	7.264	7.449
36) L8 AR-1262-1	7.619	6.227	836072	694078	17.850	37.151 #
37) L8 AR-1262-2	8.227	6.751	418444	192272	5.986	6.373
38) L8 AR-1262-3	0.000	7.086	0	693077	N.D.	55.532 #
39) L8 AR-1262-4	0.000	7.086	0	693077	N.D.	31.755 #
41) L9 AR-1268-1	0.000	7.086	0	693077	N.D.	17.554 #
42) L9 AR-1268-2	0.000	7.086	0	693077	N.D.	18.781 #

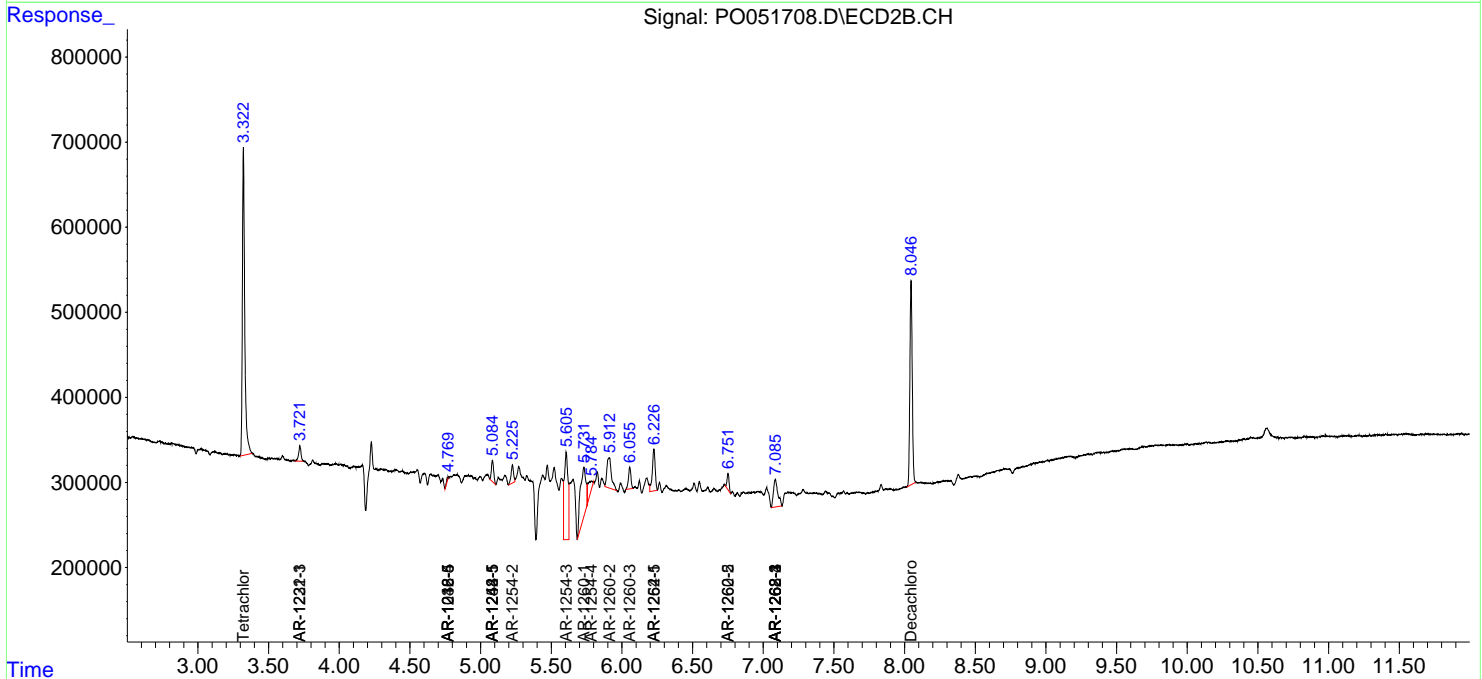
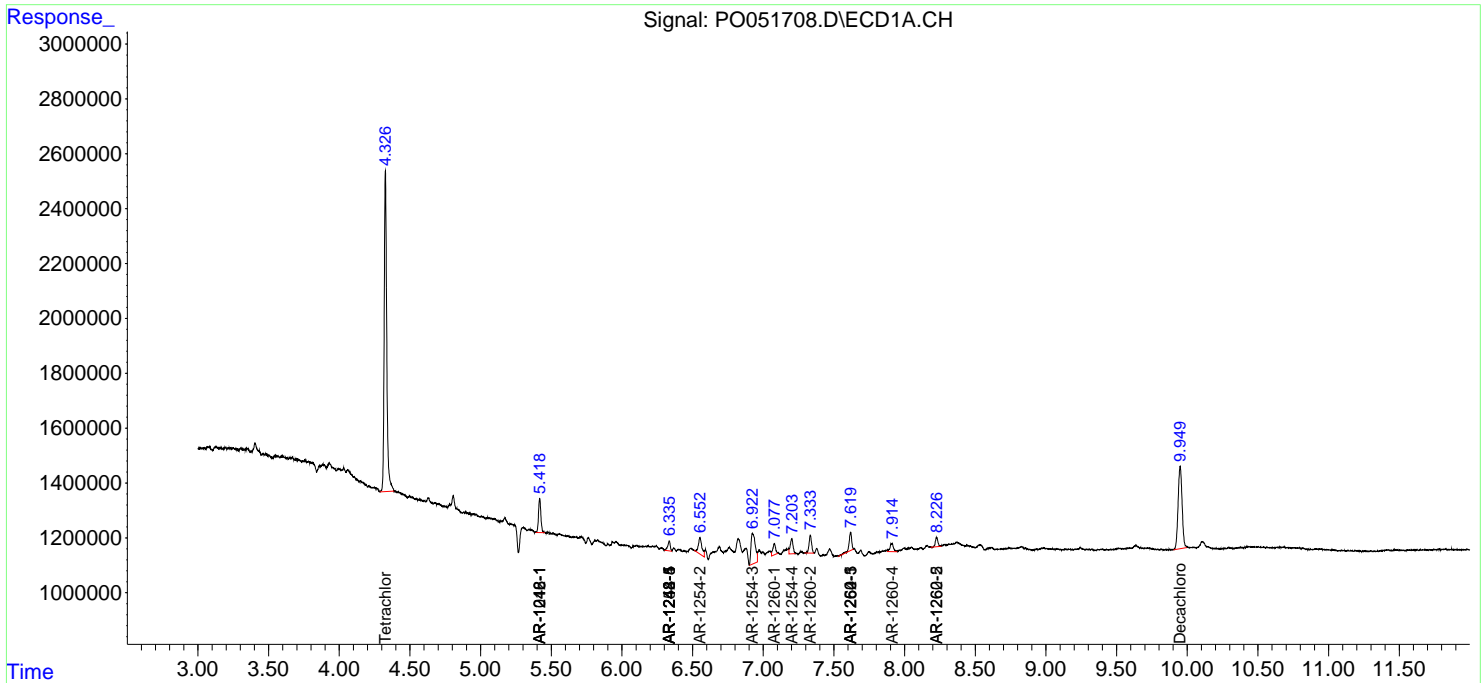
(f)=RT Delta > 1/2 Window (#)=Amounts differ by > 25% (m)=manual int.

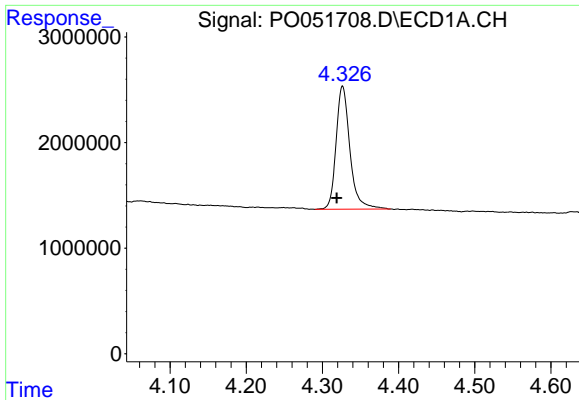
Data Path : Z:\pestpcbsrv\HPCHEM1\ECD_0\Data\PO112118\
 Data File : PO051708.D
 Signal(s) : Signal #1: ECD1A.CH Signal #2: ECD2B.CH
 Acq On : 21 Nov 2018 13:05
 Operator : SM/SJ
 Sample : J6024-01
 Misc :
 ALS Vial : 4 Sample Multiplier: 1

Instrument :
 ECD_O
 ClientSampled :

Integration File signal 1: autoint1.e
 Integration File signal 2: autoint2.e
 Quant Time: Nov 21 23:46:21 2018
 Quant Method : Z:\pestpcbsrv\HPCHEM1\ECD_0\methods\PO112018.M
 Quant Title : GC EXTRACTABLES
 QLast Update : Wed Nov 21 00:55:28 2018
 Response via : Initial Calibration
 Integrator: ChemStation 6890 Scale Mode: Small noise peaks clipped

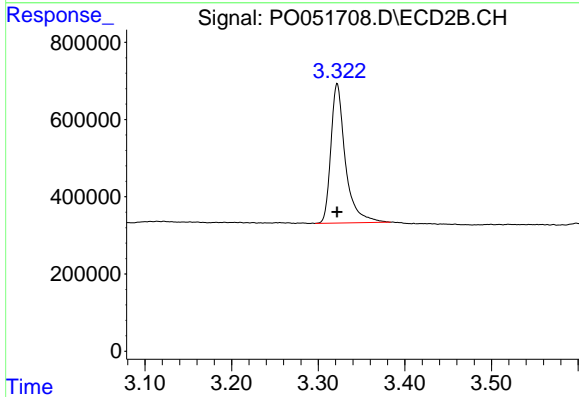
Volume Inj. : 2 µl
 Signal #1 Phase : ZB-MR1 Signal #2 Phase: ZB-MR2
 Signal #1 Info : 30Mx0.32mmx 0.50µ Signal #2 Info : 30M x 0.32mm x 0.25µm



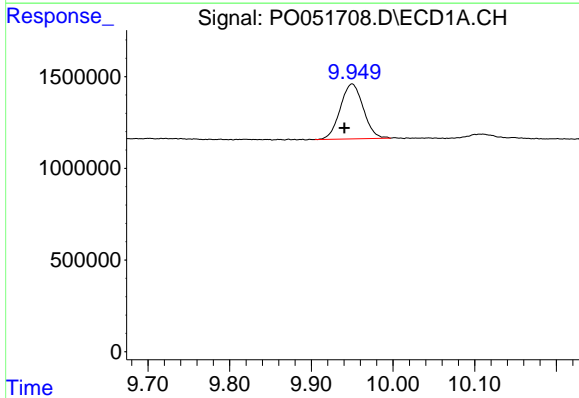


#1 Tetrachloro-m-xylene
 R.T.: 4.326 min
 Delta R.T.: 0.007 min
 Response: 14729734
 Conc: 19.57 ng/ml

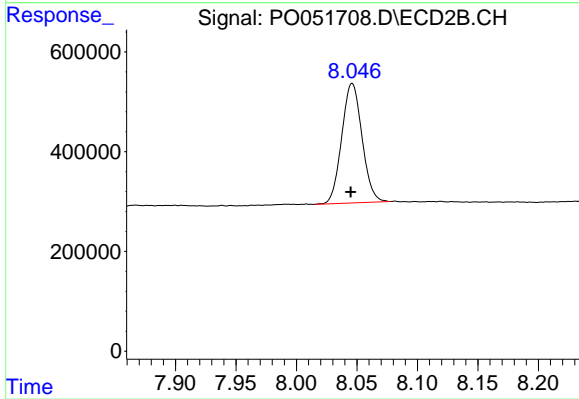
Instrument :
 ECD_O
 ClientSampled :



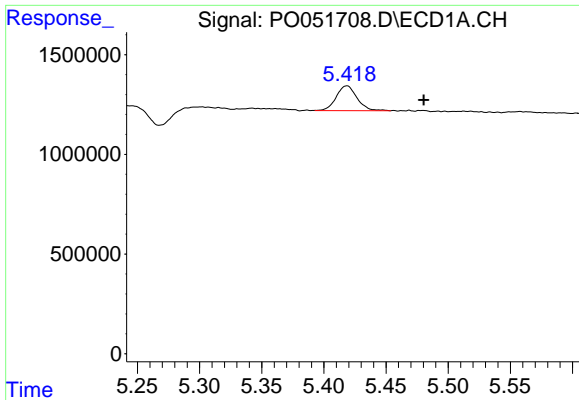
#1 Tetrachloro-m-xylene
 R.T.: 3.322 min
 Delta R.T.: 0.000 min
 Response: 4183114
 Conc: 17.48 ng/ml



#2 Decachlorobiphenyl
 R.T.: 9.950 min
 Delta R.T.: 0.009 min
 Response: 5876004
 Conc: 12.67 ng/ml



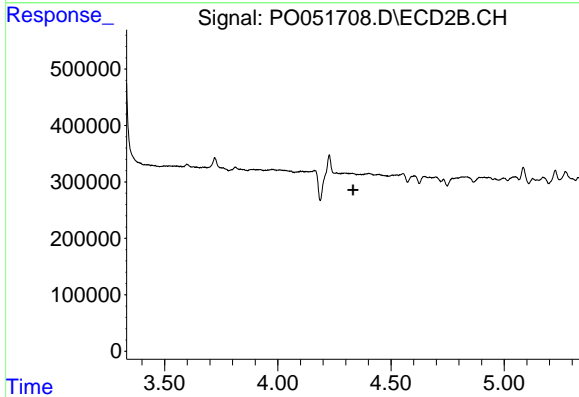
#2 Decachlorobiphenyl
 R.T.: 8.046 min
 Delta R.T.: 0.001 min
 Response: 2799114
 Conc: 12.95 ng/ml



#3 AR-1016-1

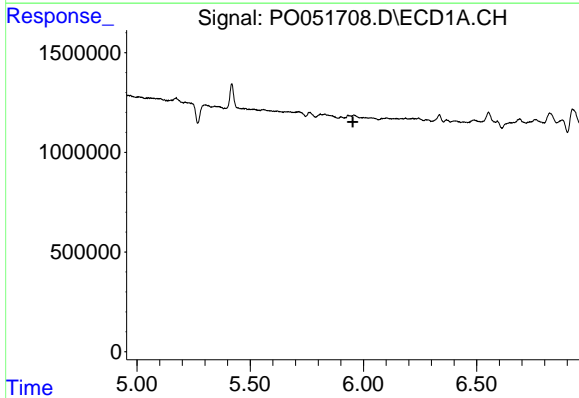
R.T.: 5.419 min
 Delta R.T.: -0.062 min
 Response: 1448578
 Conc: 64.10 ng/ml

Instrument :
 ECD_O
 ClientSampleId :



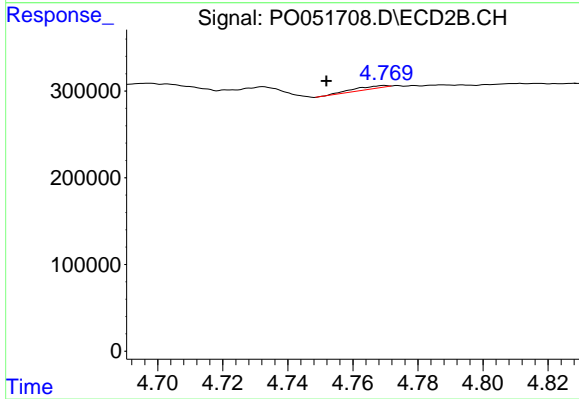
#3 AR-1016-1

R.T.: 0.000 min
 Exp R.T. : 4.332 min
 Response: 0
 Conc: N.D.



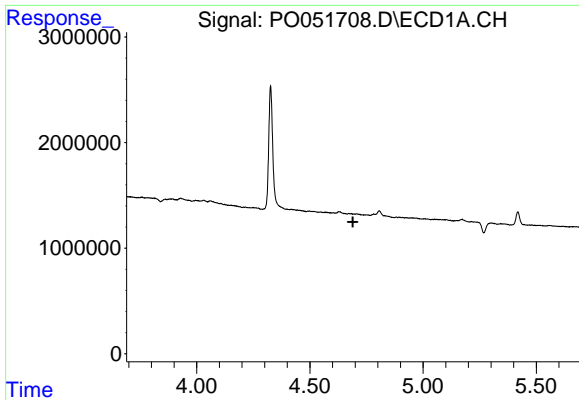
#7 AR-1016-5

R.T.: 0.000 min
 Exp R.T. : 5.953 min
 Response: 0
 Conc: N.D.



#7 AR-1016-5

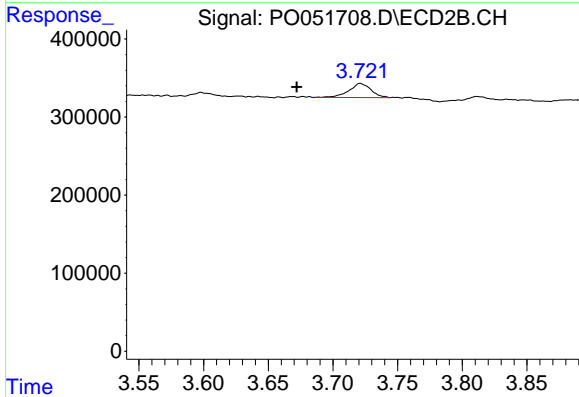
R.T.: 4.770 min
 Delta R.T.: 0.018 min
 Response: 22261
 Conc: 3.41 ng/ml



#10 AR-1221-3

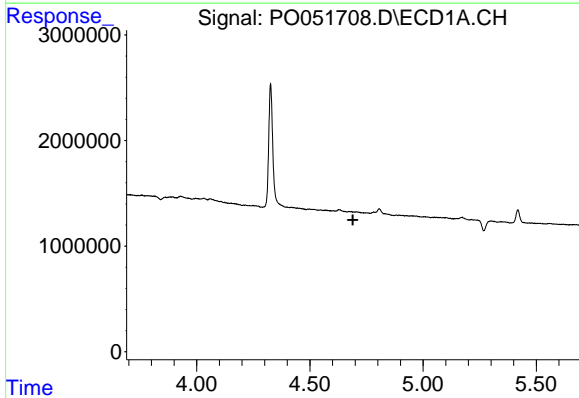
R.T.: 0.000 min
 Exp R.T. : 4.690 min
 Response: 0
 Conc: N.D.

Instrument :
 ECD_O
 ClientSampled :



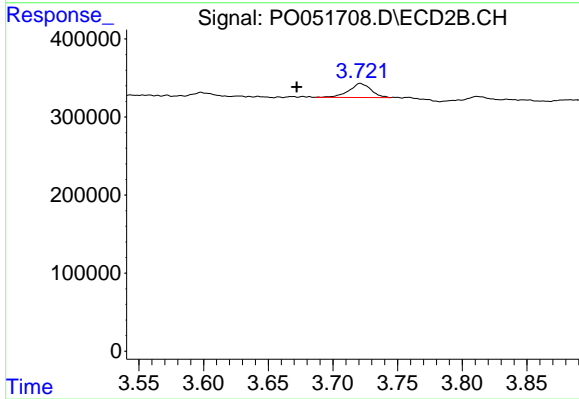
#10 AR-1221-3

R.T.: 3.721 min
 Delta R.T.: 0.049 min
 Response: 212980
 Conc: 38.76 ng/ml



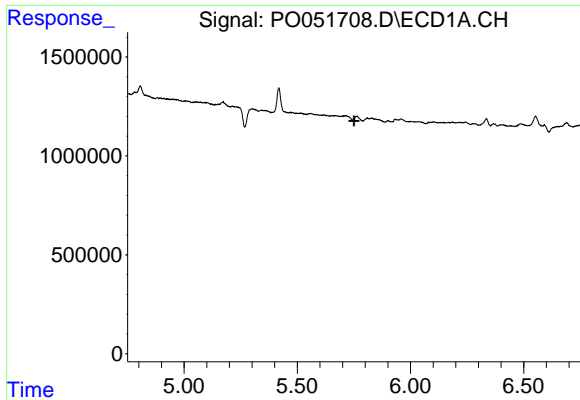
#11 AR-1232-1

R.T.: 0.000 min
 Exp R.T. : 4.690 min
 Response: 0
 Conc: N.D.



#11 AR-1232-1

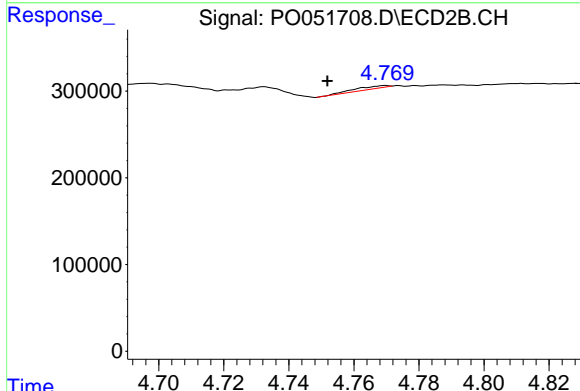
R.T.: 3.721 min
 Delta R.T.: 0.049 min
 Response: 212980
 Conc: 46.00 ng/ml



#15 AR-1232-5

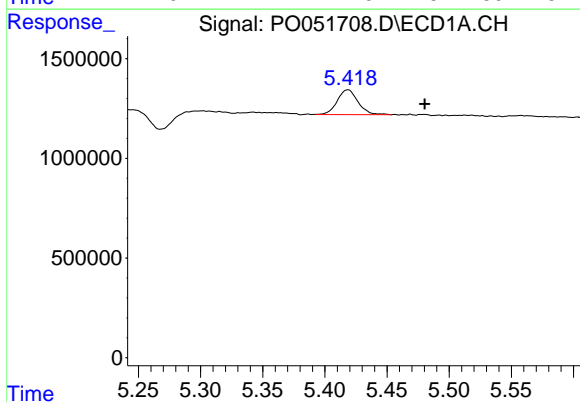
R.T.: 0.000 min
 Exp R.T.: 5.750 min
 Response: 0
 Conc: N.D.

Instrument :
 ECD_O
 ClientSampleId :



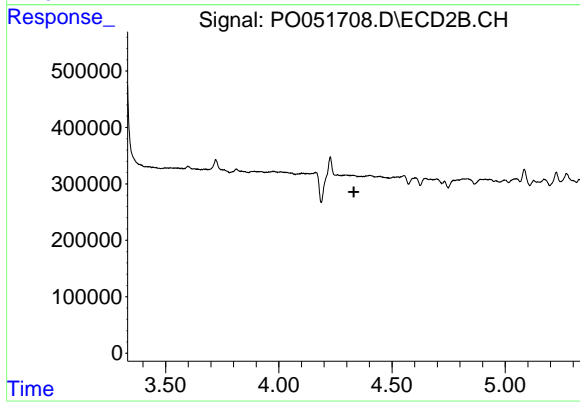
#15 AR-1232-5

R.T.: 4.770 min
 Delta R.T.: 0.018 min
 Response: 22261
 Conc: 8.79 ng/ml



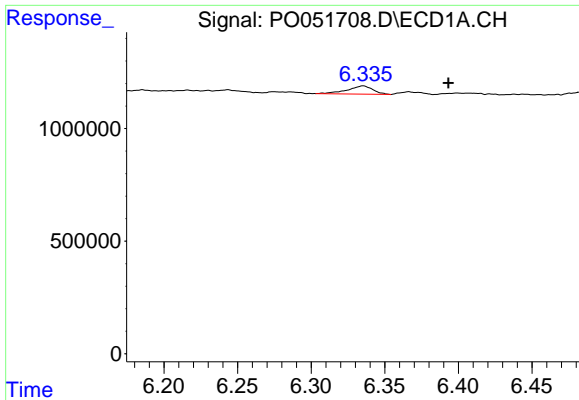
#16 AR-1242-1

R.T.: 5.419 min
 Delta R.T.: -0.062 min
 Response: 1448578
 Conc: 80.68 ng/ml



#16 AR-1242-1

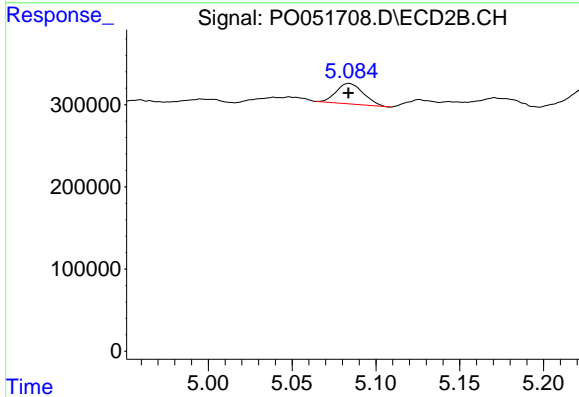
R.T.: 0.000 min
 Exp R.T.: 4.332 min
 Response: 0
 Conc: N.D.



#20 AR-1242-5

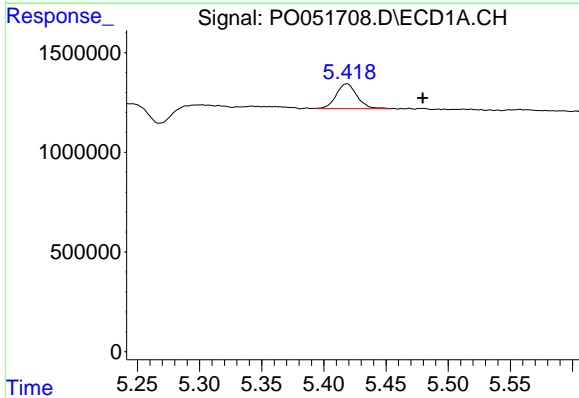
R.T.: 6.335 min
 Delta R.T.: -0.058 min
 Response: 444349
 Conc: 33.25 ng/ml

Instrument :
 ECD_O
 ClientSampleId :



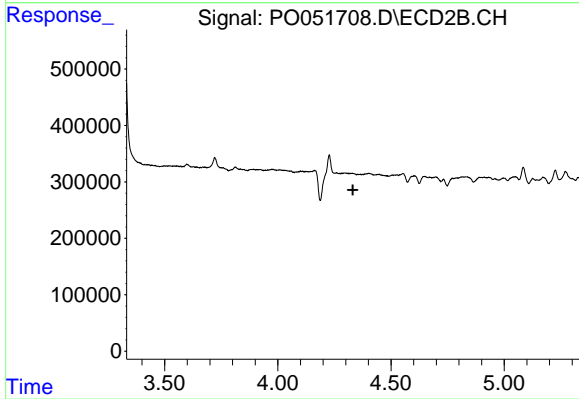
#20 AR-1242-5

R.T.: 5.084 min
 Delta R.T.: 0.000 min
 Response: 280998
 Conc: 46.62 ng/ml



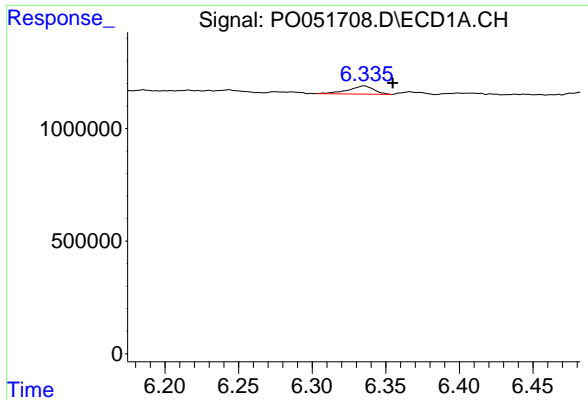
#21 AR-1248-1

R.T.: 5.419 min
 Delta R.T.: -0.061 min
 Response: 1448578
 Conc: 94.09 ng/ml



#21 AR-1248-1

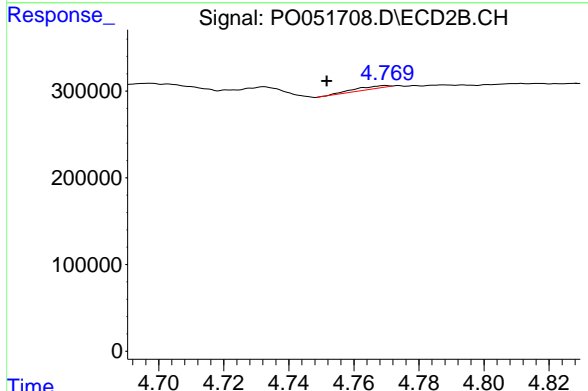
R.T.: 0.000 min
 Exp R.T. : 4.331 min
 Response: 0
 Conc: N.D.



#24 AR-1248-4

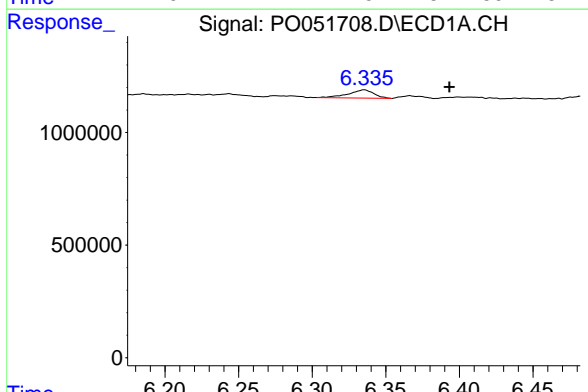
R.T.: 6.335 min
 Delta R.T.: -0.019 min
 Response: 444349
 Conc: 16.81 ng/ml

Instrument :
 ECD_O
 ClientSampleId :



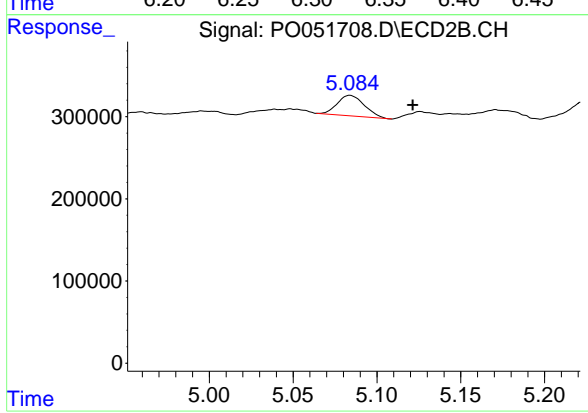
#24 AR-1248-4

R.T.: 4.770 min
 Delta R.T.: 0.018 min
 Response: 22261
 Conc: 2.29 ng/ml



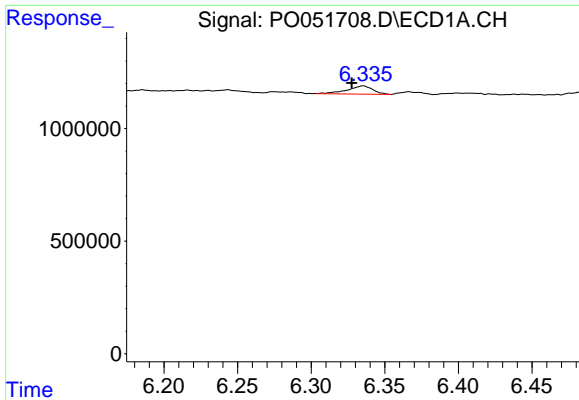
#25 AR-1248-5

R.T.: 6.335 min
 Delta R.T.: -0.058 min
 Response: 444349
 Conc: 17.72 ng/ml



#25 AR-1248-5

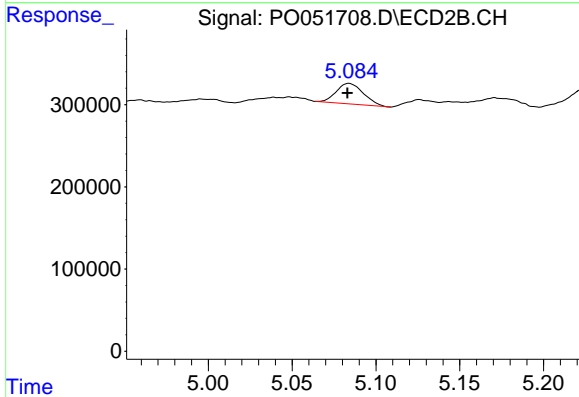
R.T.: 5.084 min
 Delta R.T.: -0.037 min
 Response: 280998
 Conc: 29.76 ng/ml



#26 AR-1254-1

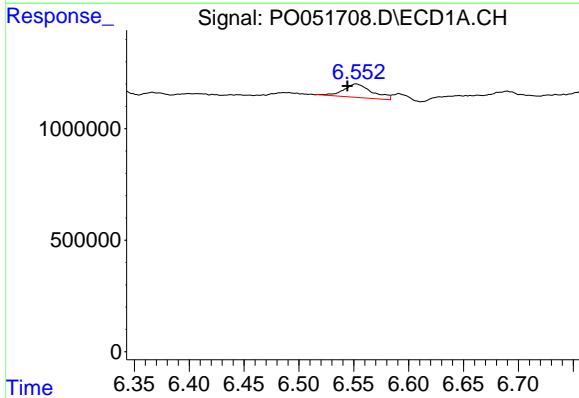
R.T.: 6.335 min
 Delta R.T.: 0.008 min
 Response: 444349
 Conc: 17.99 ng/ml

Instrument :
 ECD_O
 ClientSampled :



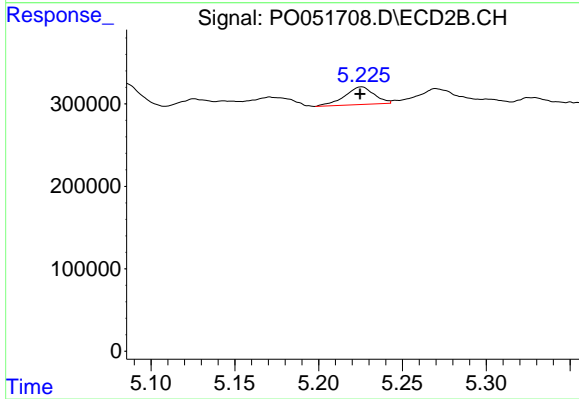
#26 AR-1254-1

R.T.: 5.084 min
 Delta R.T.: 0.000 min
 Response: 280998
 Conc: 20.44 ng/ml



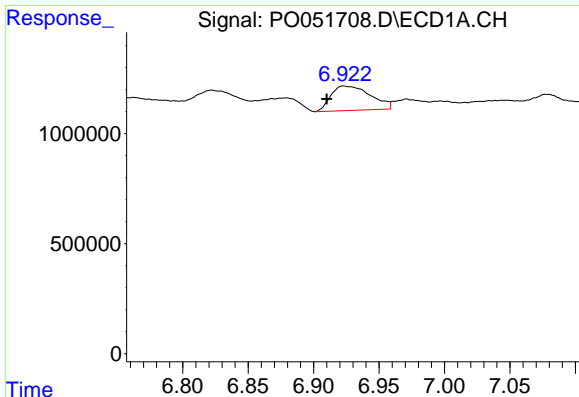
#27 AR-1254-2

R.T.: 6.552 min
 Delta R.T.: 0.008 min
 Response: 1083707
 Conc: 27.83 ng/ml



#27 AR-1254-2

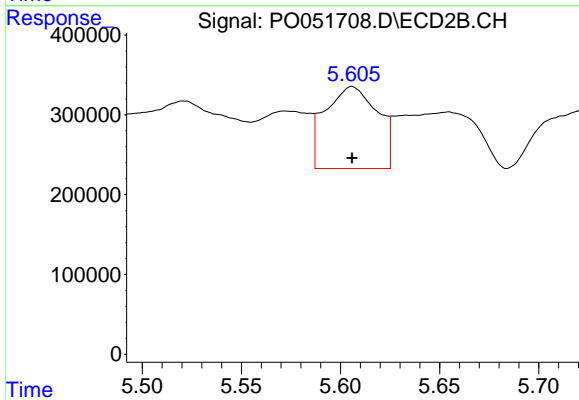
R.T.: 5.226 min
 Delta R.T.: 0.001 min
 Response: 261665
 Conc: 21.92 ng/ml



#28 AR-1254-3

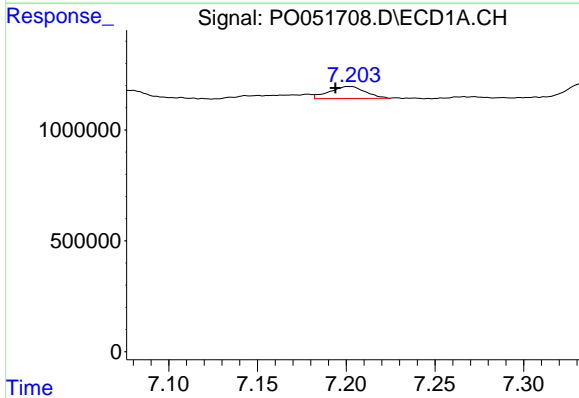
R.T.: 6.923 min
 Delta R.T.: 0.013 min
 Response: 2339333
 Conc: 58.03 ng/ml

Instrument :
 ECD_O
 ClientSampled :



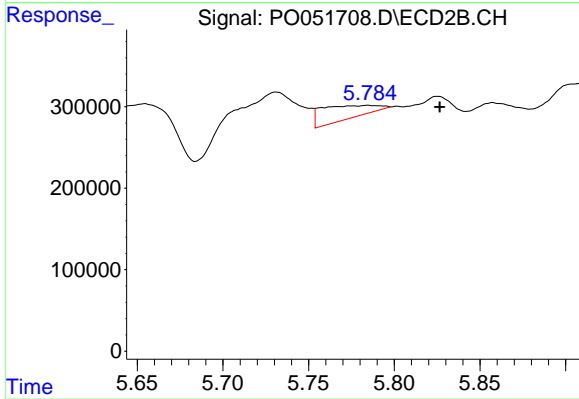
#28 AR-1254-3

R.T.: 5.606 min
 Delta R.T.: 0.000 min
 Response: 1886098
 Conc: 100.38 ng/ml



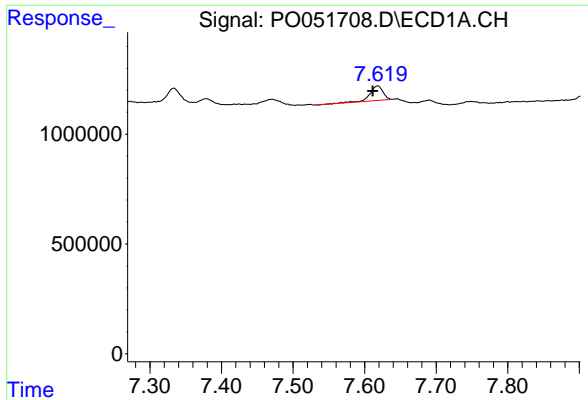
#29 AR-1254-4

R.T.: 7.203 min
 Delta R.T.: 0.009 min
 Response: 758328
 Conc: 24.31 ng/ml



#29 AR-1254-4

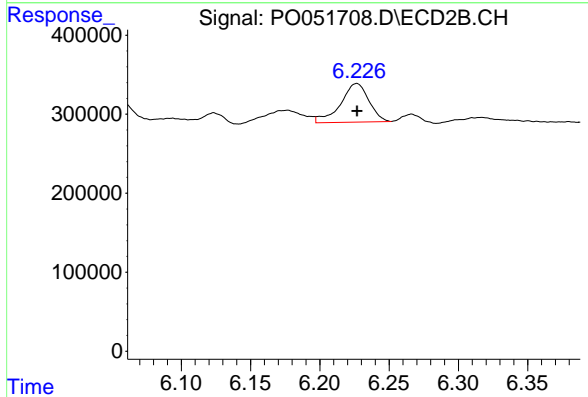
R.T.: 5.785 min
 Delta R.T.: -0.042 min
 Response: 358731
 Conc: 31.45 ng/ml



#30 AR-1254-5

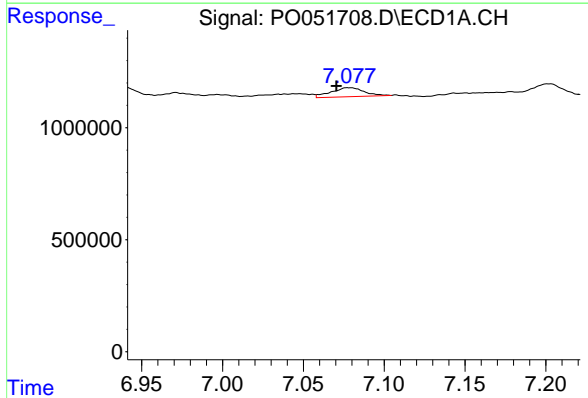
R.T.: 7.619 min
 Delta R.T.: 0.008 min
 Response: 836072
 Conc: 27.15 ng/ml

Instrument :
 ECD_O
 ClientSampleId :



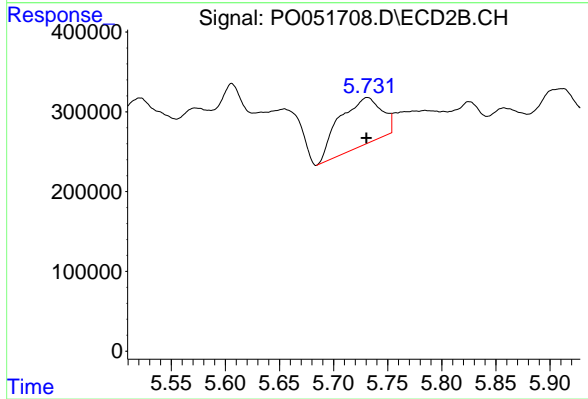
#30 AR-1254-5

R.T.: 6.227 min
 Delta R.T.: 0.000 min
 Response: 694078
 Conc: 43.98 ng/ml



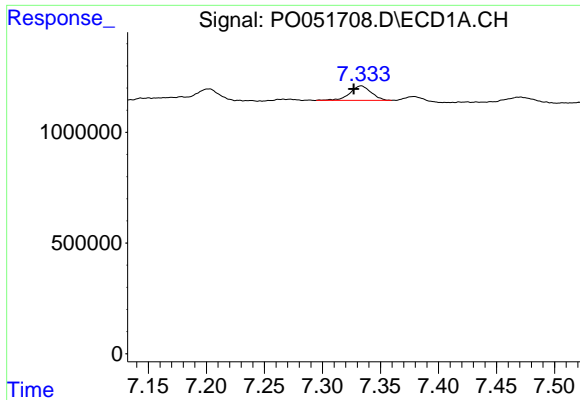
#31 AR-1260-1

R.T.: 7.077 min
 Delta R.T.: 0.007 min
 Response: 578742
 Conc: 19.22 ng/ml



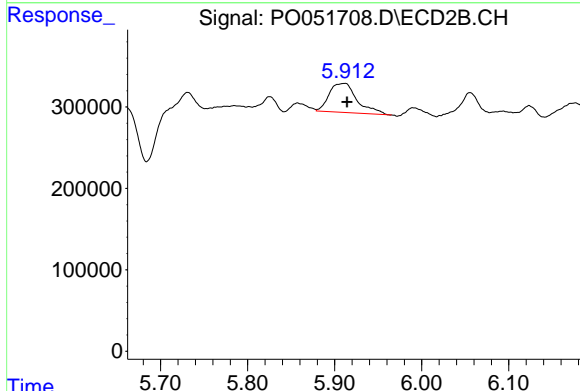
#31 AR-1260-1

R.T.: 5.731 min
 Delta R.T.: 0.000 min
 Response: 1629349
 Conc: 120.10 ng/ml

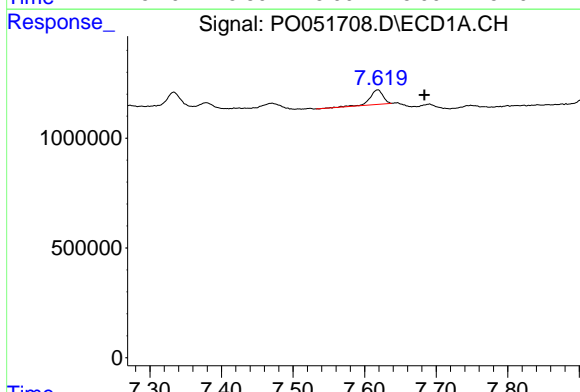


#32 AR-1260-2
 R.T.: 7.333 min
 Delta R.T.: 0.007 min
 Response: 824637
 Conc: 19.53 ng/ml

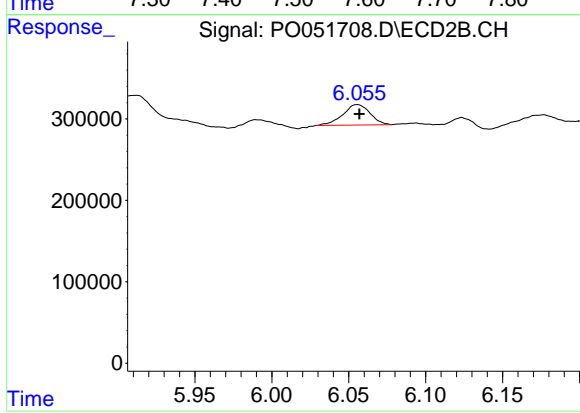
Instrument :
 ECD_O
 ClientSampleId :



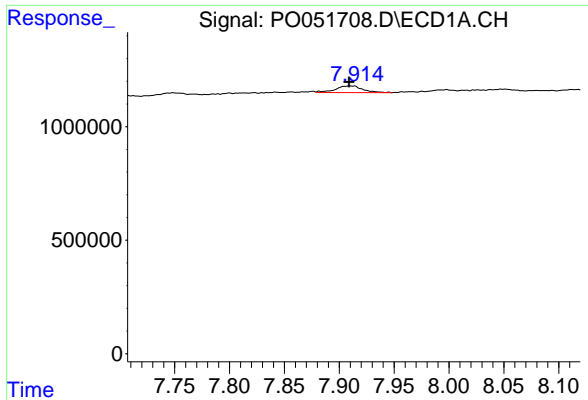
#32 AR-1260-2
 R.T.: 5.913 min
 Delta R.T.: -0.001 min
 Response: 790045
 Conc: 45.53 ng/ml



#33 AR-1260-3
 R.T.: 7.619 min
 Delta R.T.: -0.065 min
 Response: 836072
 Conc: 28.78 ng/ml

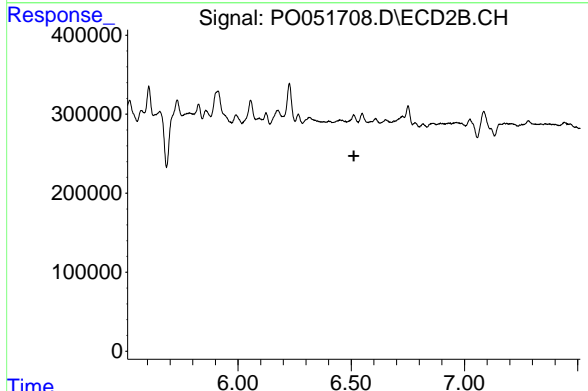


#33 AR-1260-3
 R.T.: 6.056 min
 Delta R.T.: -0.001 min
 Response: 309623
 Conc: 20.21 ng/ml

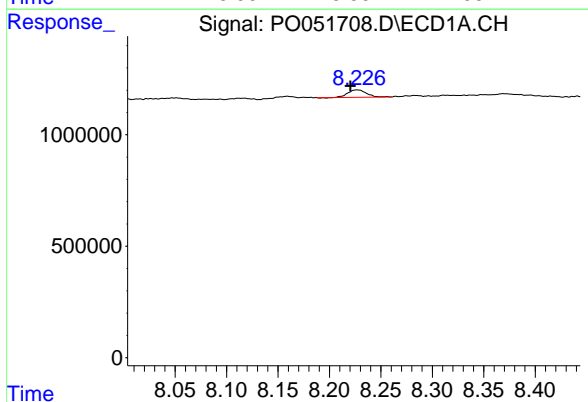


#34 AR-1260-4
 R.T.: 7.914 min
 Delta R.T.: 0.005 min
 Response: 521181
 Conc: 18.95 ng/ml

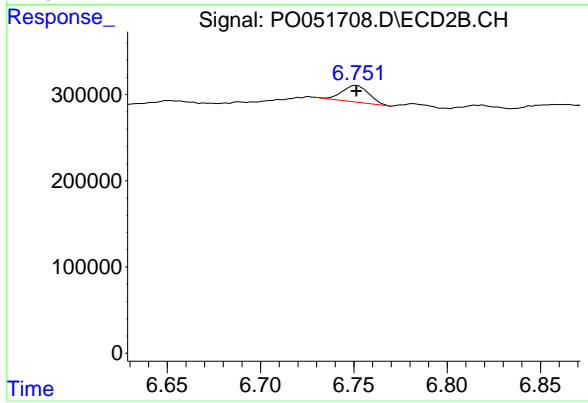
Instrument :
 ECD_O
 ClientSampleId :



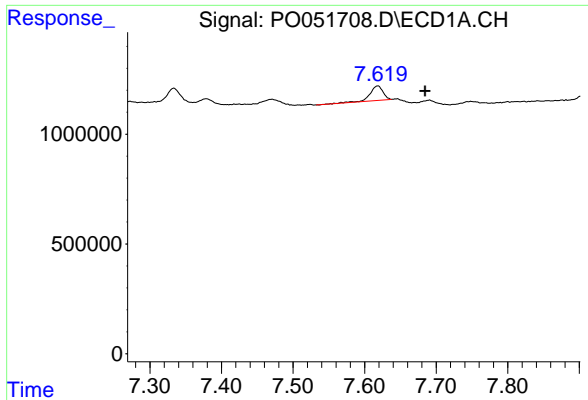
#34 AR-1260-4
 R.T.: 0.000 min
 Exp R.T. : 6.512 min
 Response: 0
 Conc: N.D.



#35 AR-1260-5
 R.T.: 8.227 min
 Delta R.T.: 0.006 min
 Response: 418444
 Conc: 7.26 ng/ml

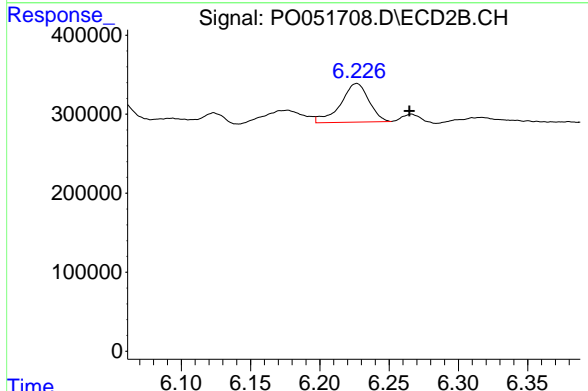


#35 AR-1260-5
 R.T.: 6.751 min
 Delta R.T.: 0.000 min
 Response: 192272
 Conc: 7.45 ng/ml

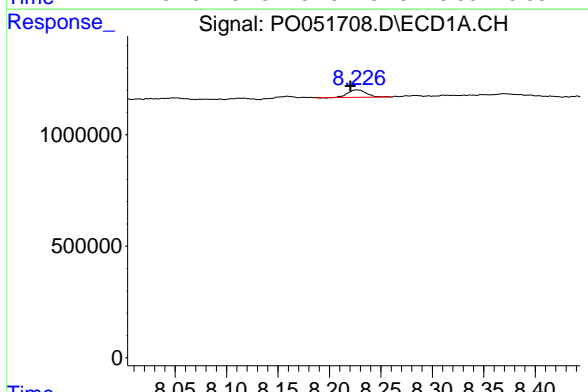


#36 AR-1262-1
 R.T.: 7.619 min
 Delta R.T.: -0.065 min
 Response: 836072
 Conc: 17.85 ng/ml

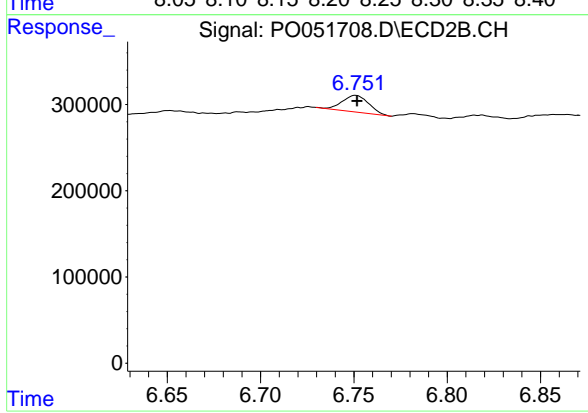
Instrument :
 ECD_O
 ClientSampleId :



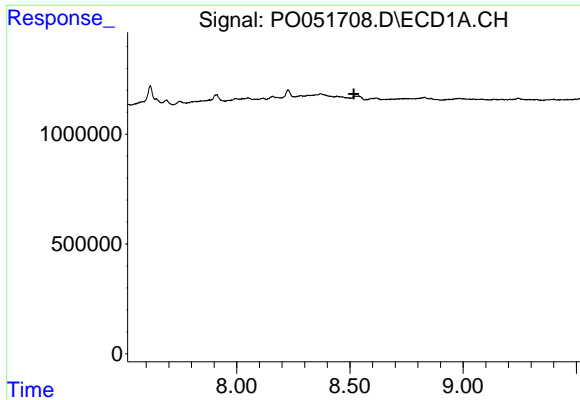
#36 AR-1262-1
 R.T.: 6.227 min
 Delta R.T.: -0.038 min
 Response: 694078
 Conc: 37.15 ng/ml



#37 AR-1262-2
 R.T.: 8.227 min
 Delta R.T.: 0.006 min
 Response: 418444
 Conc: 5.99 ng/ml



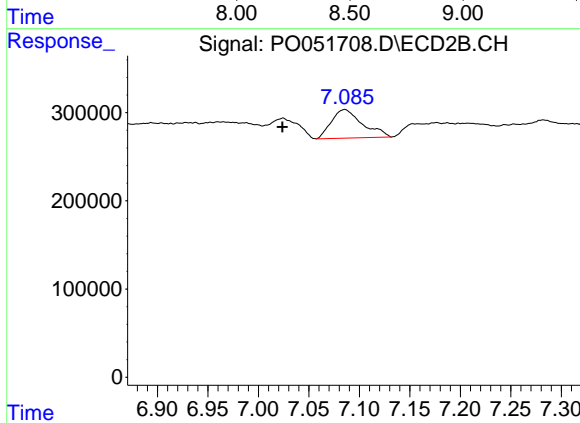
#37 AR-1262-2
 R.T.: 6.751 min
 Delta R.T.: 0.000 min
 Response: 192272
 Conc: 6.37 ng/ml



#38 AR-1262-3

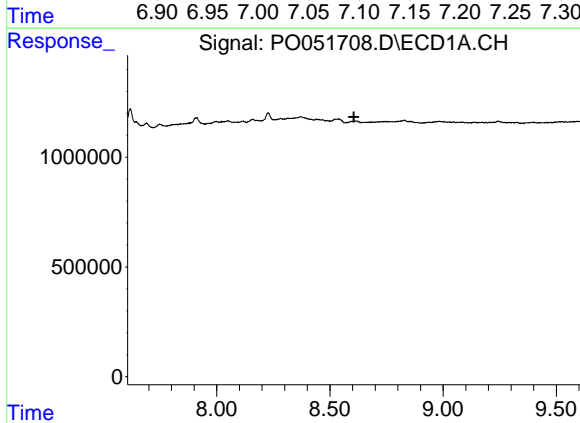
R.T.: 0.000 min
 Exp R.T. : 8.518 min
 Response: 0
 Conc: N.D.

Instrument :
 ECD_O
 ClientSampleId :



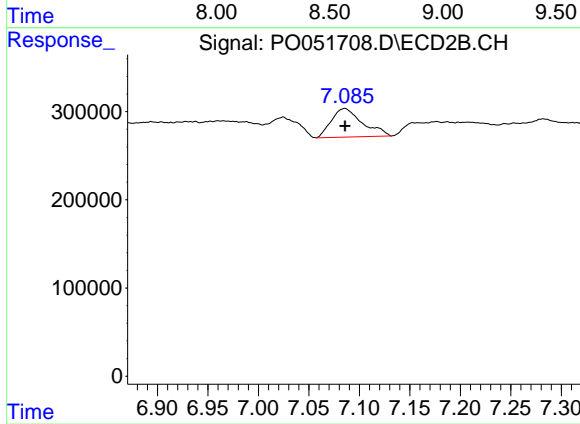
#38 AR-1262-3

R.T.: 7.086 min
 Delta R.T.: 0.062 min
 Response: 693077
 Conc: 55.53 ng/ml



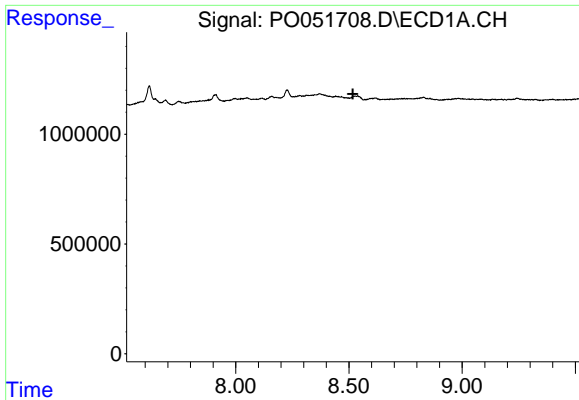
#39 AR-1262-4

R.T.: 0.000 min
 Exp R.T. : 8.606 min
 Response: 0
 Conc: N.D.



#39 AR-1262-4

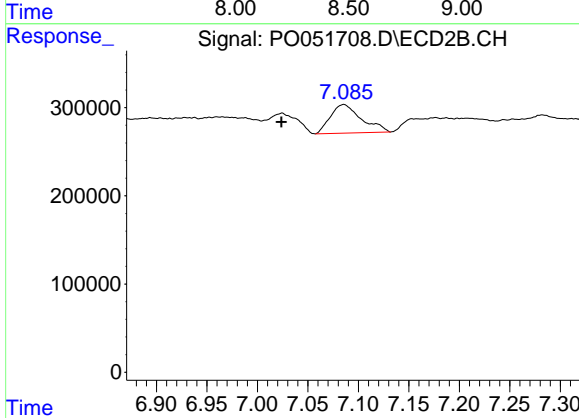
R.T.: 7.086 min
 Delta R.T.: 0.000 min
 Response: 693077
 Conc: 31.76 ng/ml



#41 AR-1268-1

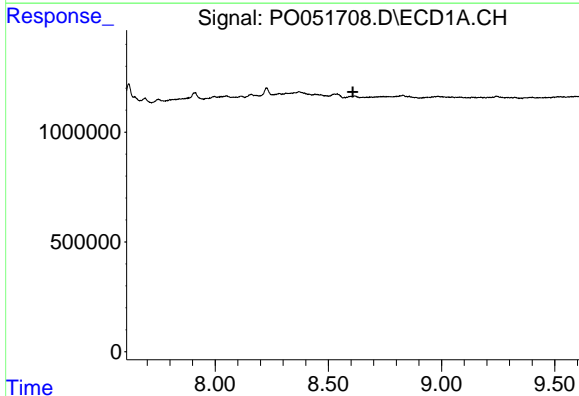
R.T.: 0.000 min
 Exp R.T. : 8.518 min
 Response: 0
 Conc: N.D.

Instrument :
 ECD_O
 ClientSampleId :



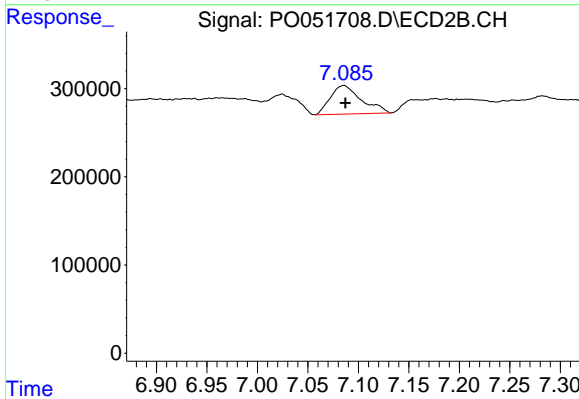
#41 AR-1268-1

R.T.: 7.086 min
 Delta R.T.: 0.062 min
 Response: 693077
 Conc: 17.55 ng/ml



#42 AR-1268-2

R.T.: 0.000 min
 Exp R.T. : 8.608 min
 Response: 0
 Conc: N.D.



#42 AR-1268-2

R.T.: 7.086 min
 Delta R.T.: -0.001 min
 Response: 693077
 Conc: 18.78 ng/ml