

Data Path : Z:\pestpcbsrv\HPCHEM1\ECD\_0\Data\PO112118\  
 Data File : PO051715.D  
 Signal(s) : Signal #1: ECD1A.CH Signal #2: ECD2B.CH  
 Acq On : 21 Nov 2018 15:04  
 Operator : SM/SJ  
 Sample : J6024-01MSD  
 Misc :  
 ALS Vial : 11 Sample Multiplier: 1

Instrument :  
 ECD\_O  
 ClientSampled :

Integration File signal 1: autoint1.e  
 Integration File signal 2: autoint2.e  
 Quant Time: Nov 21 23:50:38 2018  
 Quant Method : Z:\pestpcbsrv\HPCHEM1\ECD\_0\methods\PO112018.M  
 Quant Title : GC EXTRACTABLES  
 QLast Update : Wed Nov 21 00:55:28 2018  
 Response via : Initial Calibration  
 Integrator: ChemStation 6890 Scale Mode: Small noise peaks clipped

Volume Inj. : 2 µl  
 Signal #1 Phase : ZB-MR1 Signal #2 Phase: ZB-MR2  
 Signal #1 Info : 30Mx0.32mmx 0.50µ Signal #2 Info : 30M x 0.32mm x 0.25µm

Compound	RT#1	RT#2	Resp#1	Resp#2	ng/ml	ng/ml
System Monitoring Compounds						
1) SA Tetrachlo...	4.317	3.322	19251386	5300841	25.573	22.146
2) SA Decachlor...	9.937	8.043	7692318	3398999	16.582	15.723
Target Compounds						
3) L1 AR-1016-1	5.478	4.330	7689628	3026806	340.275	408.148
4) L1 AR-1016-2	5.500	4.346	9870063	4313687	292.073	352.703
5) L1 AR-1016-3	5.561	4.510	5673089	2348072	284.241	384.585 #
6) L1 AR-1016-4	5.660	4.553	4568032	1615167	275.063	304.390
7) L1 AR-1016-5	5.951	4.751	4361521	1587647	274.080	243.273
8) L2 AR-1221-1	4.518	3.523	27352	199622	3.847	88.761 #
9) L2 AR-1221-2	4.612	3.601	722222	230834	137.839	133.130
10) L2 AR-1221-3	4.688	3.671	3063835	943198	185.860	171.635
11) L3 AR-1232-1	4.688	3.671	3063835	943198	230.712	203.698
12) L3 AR-1232-2	5.213	4.346	9029949	4313687	1243.160	805.444 #
13) L3 AR-1232-3	5.500	4.510	9870063	2348072	689.396	898.307 #
14) L3 AR-1232-4	5.660	4.590	4568032	1683750	641.610	763.935
15) L3 AR-1232-5	5.748	4.751	3165574	1587647	640.435	627.200
16) L4 AR-1242-1	5.478	4.330	7689628	3026806	428.261	510.080
17) L4 AR-1242-2	5.500	4.346	9870063	4313687	362.920	432.174
18) L4 AR-1242-3	5.561	4.510	5673089	2348072	355.233	473.391 #
19) L4 AR-1242-4	5.660	4.590	4568032	1683750	345.931	355.329
20) L4 AR-1242-5	6.390	5.082	1323394	1626711	99.013	269.867 #
21) L5 AR-1248-1	5.478	4.330	7689628	3026806	499.486	561.875
22) L5 AR-1248-2	5.748	4.553	3165574	1615167	148.905	204.698 #
23) L5 AR-1248-3	5.951	4.590	4361521	1683750	183.826	214.773
24) L5 AR-1248-4	6.355	4.751	1155557	1587647	43.721	163.646 #
25) L5 AR-1248-5	6.390	5.121	1323394	333149	52.773	35.286 #
26) L6 AR-1254-1	6.326	5.082	3865952	1626711	156.531	118.323
27) L6 AR-1254-2	6.542	5.223	5406760	1566839	138.828	131.285
28) L6 AR-1254-3	6.910	5.618	3236933	3990691	80.296	212.396 #
29) L6 AR-1254-4	7.191	5.824	3149556	991073	100.977	86.893
30) L6 AR-1254-5	7.608	6.224	9534223	4469701	309.638	283.214
31) L7 AR-1260-1	7.069	5.729	8000040	5577990	265.702	411.169 #
32) L7 AR-1260-2	7.325	5.912	9091167	4793835	215.348	276.249 #
33) L7 AR-1260-3	7.681	6.055	5457668	3488287	187.852	227.724
34) L7 AR-1260-4	7.907	6.510	5509244	2169116	200.324	213.448
35) L7 AR-1260-5	8.218	6.749	11249667	5547151	195.284	214.908
36) L8 AR-1262-1	7.681	6.262	5457668	2397856	116.521	128.348
37) L8 AR-1262-2	8.218	6.749	11249667	5547151	160.928	183.878
38) L8 AR-1262-3	8.533	7.021	6993592	1394576	158.532	111.738 #
39) L8 AR-1262-4	8.586	7.082	3944240	4393064	113.870	201.281 #
40) L8 AR-1262-5	9.232	7.568	2394534	1134068	115.934	127.636
41) L9 AR-1268-1	8.533	7.021	6993592	1394576	75.418	35.321 #

Data Path : Z:\pestpcbsrv\HPCHEM1\ECD\_0\Data\PO112118\  
 Data File : PO051715.D  
 Signal(s) : Signal #1: ECD1A.CH Signal #2: ECD2B.CH  
 Acq On : 21 Nov 2018 15:04  
 Operator : SM/SJ  
 Sample : J6024-01MSD  
 Misc :  
 ALS Vial : 11 Sample Multiplier: 1

Instrument :  
 ECD\_0  
 ClientSampleId :

Integration File signal 1: autoint1.e  
 Integration File signal 2: autoint2.e  
 Quant Time: Nov 21 23:50:38 2018  
 Quant Method : Z:\pestpcbsrv\HPCHEM1\ECD\_0\methods\PO112018.M  
 Quant Title : GC EXTRACTABLES  
 QLast Update : Wed Nov 21 00:55:28 2018  
 Response via : Initial Calibration  
 Integrator: ChemStation 6890 Scale Mode: Small noise peaks clipped

Volume Inj. : 2 µl  
 Signal #1 Phase : ZB-MR1 Signal #2 Phase: ZB-MR2  
 Signal #1 Info : 30Mx0.32mmx 0.50µ Signal #2 Info : 30M x 0.32mm x 0.25µm

	Compound	RT#1	RT#2	Resp#1	Resp#2	ng/ml	ng/ml
42)	L9 AR-1268-2	8.586	7.082	3944240	4393064	49.433	119.043 #
43)	L9 AR-1268-3	0.000	7.280	0	198748	N.D.	6.027 #
44)	L9 AR-1268-4	9.232	7.568	2394534	1134068	96.670	100.792
45)	L9 AR-1268-5	9.623	7.831	899141	336240	4.757	3.918

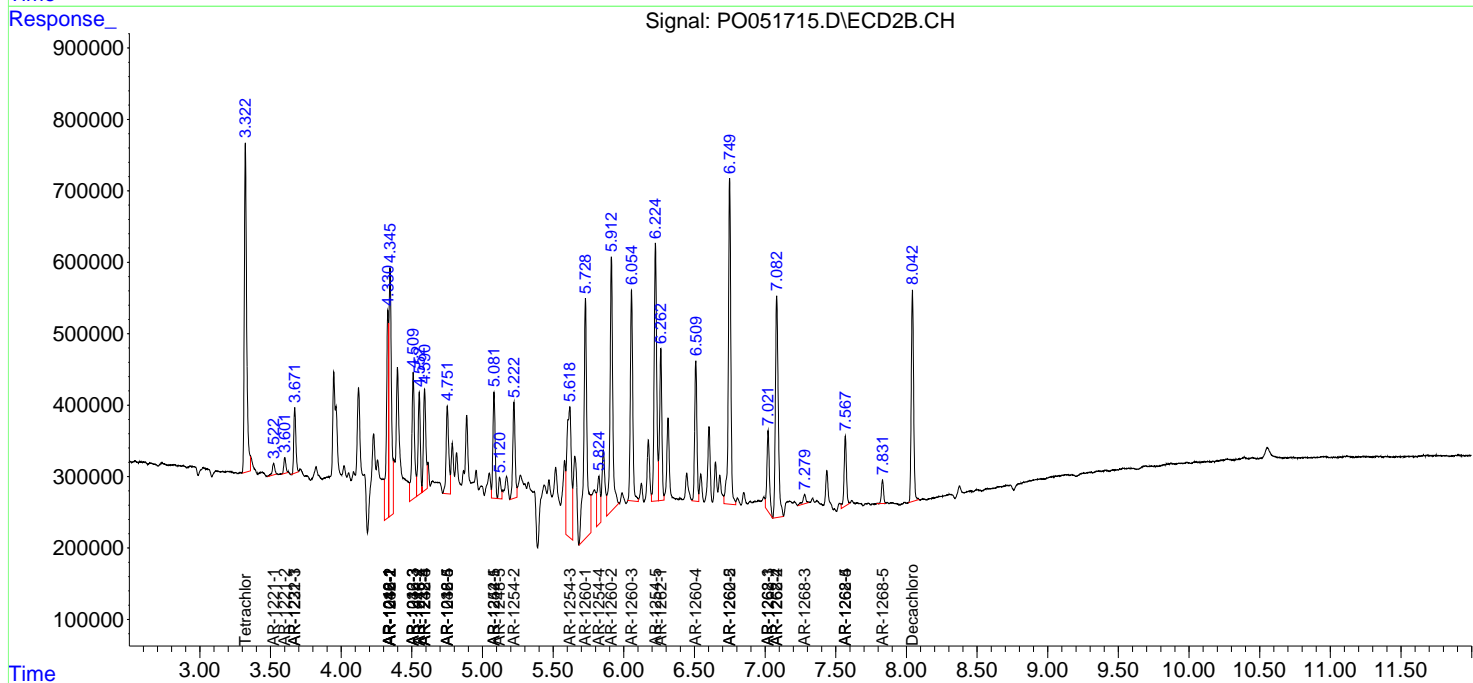
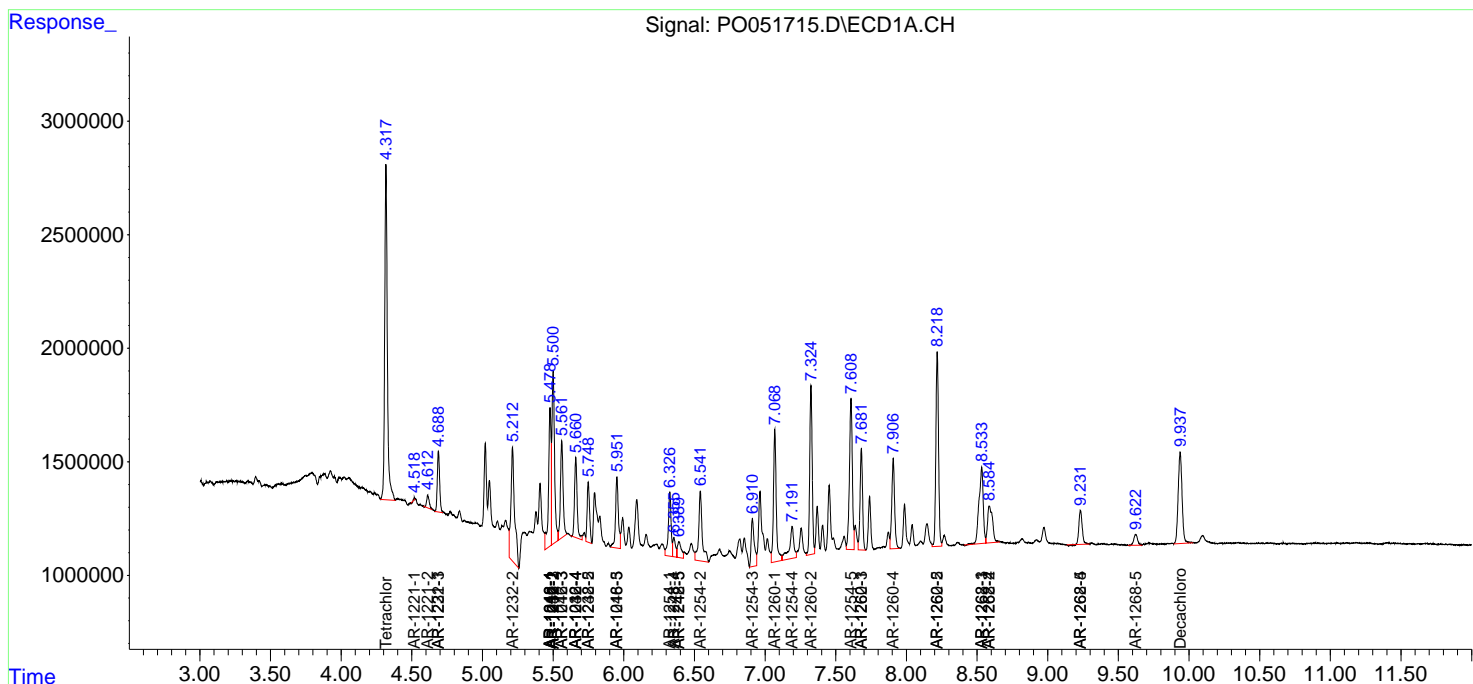
(f)=RT Delta > 1/2 Window (#)=Amounts differ by > 25% (m)=manual int.

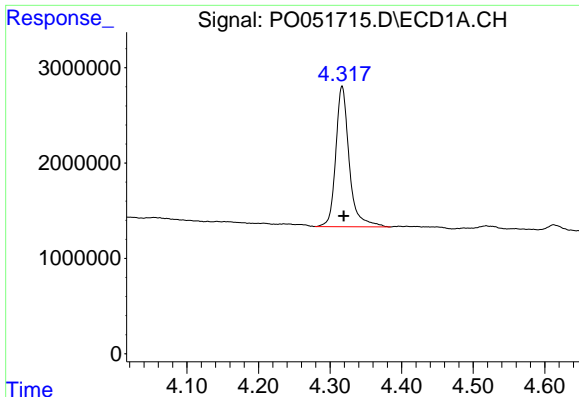
Data Path : Z:\pestpcbsrv\HPCHEM1\ECD\_0\Data\PO112118\  
 Data File : PO051715.D  
 Signal(s) : Signal #1: ECD1A.CH Signal #2: ECD2B.CH  
 Acq On : 21 Nov 2018 15:04  
 Operator : SM/SJ  
 Sample : J6024-01MSD  
 Misc :  
 ALS Vial : 11 Sample Multiplier: 1

Instrument :  
 ECD\_O  
 ClientSampled :

Integration File signal 1: autoint1.e  
 Integration File signal 2: autoint2.e  
 Quant Time: Nov 21 23:50:38 2018  
 Quant Method : Z:\pestpcbsrv\HPCHEM1\ECD\_0\methods\PO112018.M  
 Quant Title : GC EXTRACTABLES  
 QLast Update : Wed Nov 21 00:55:28 2018  
 Response via : Initial Calibration  
 Integrator: ChemStation 6890 Scale Mode: Small noise peaks clipped

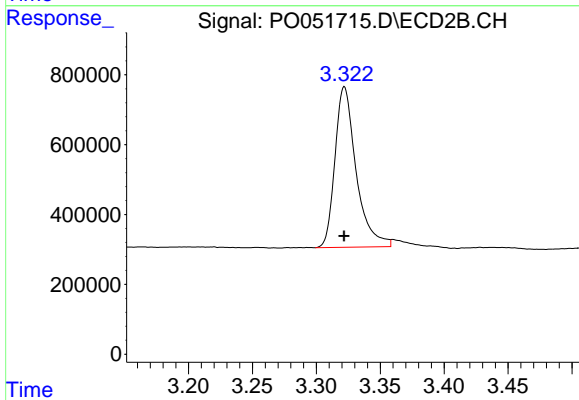
Volume Inj. : 2 µl  
 Signal #1 Phase : ZB-MR1 Signal #2 Phase: ZB-MR2  
 Signal #1 Info : 30Mx0.32mmx 0.50µ Signal #2 Info : 30M x 0.32mm x 0.25µm



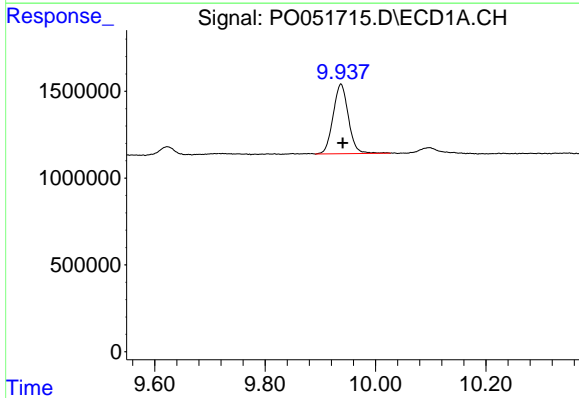


#1 Tetrachloro-m-xylene  
 R.T.: 4.317 min  
 Delta R.T.: -0.002 min  
 Response: 19251386  
 Conc: 25.57 ng/ml

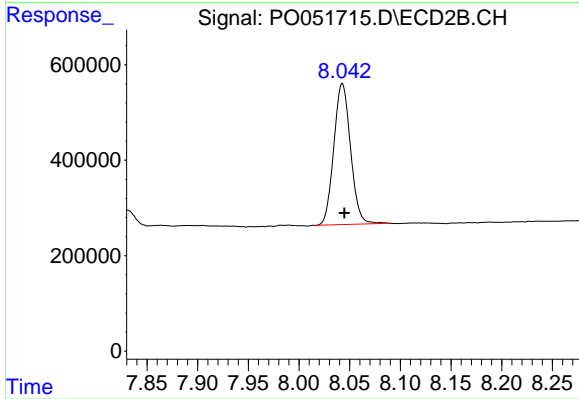
Instrument :  
 ECD\_O  
 ClientSampleId :



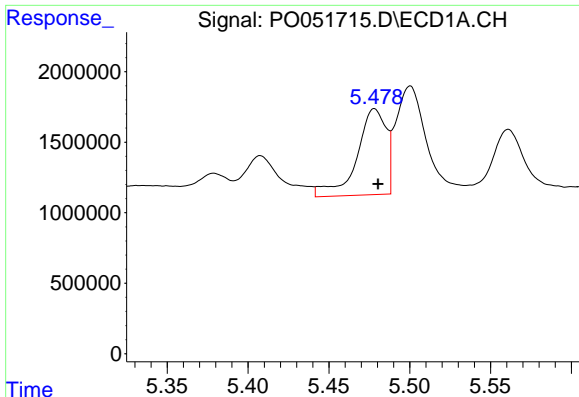
#1 Tetrachloro-m-xylene  
 R.T.: 3.322 min  
 Delta R.T.: 0.000 min  
 Response: 5300841  
 Conc: 22.15 ng/ml



#2 Decachlorobiphenyl  
 R.T.: 9.937 min  
 Delta R.T.: -0.003 min  
 Response: 7692318  
 Conc: 16.58 ng/ml



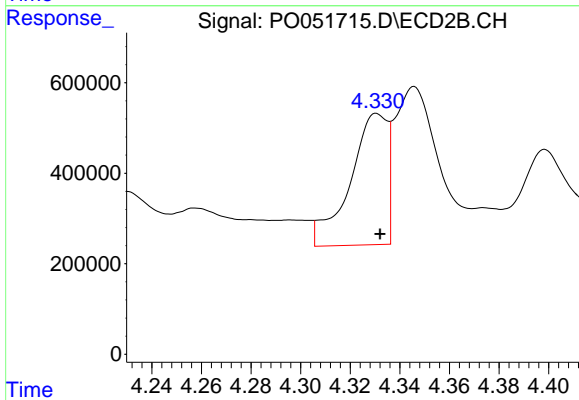
#2 Decachlorobiphenyl  
 R.T.: 8.043 min  
 Delta R.T.: -0.002 min  
 Response: 3398999  
 Conc: 15.72 ng/ml



#3 AR-1016-1

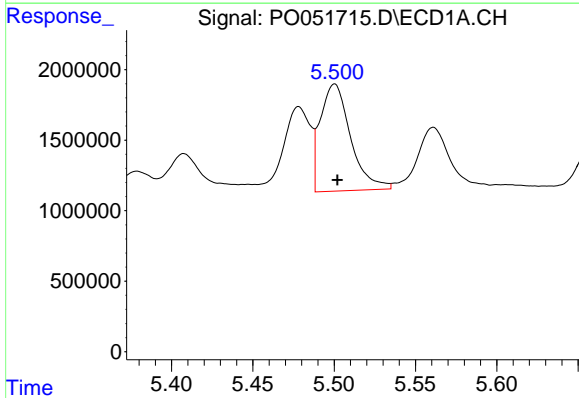
R.T.: 5.478 min  
 Delta R.T.: -0.002 min  
 Response: 7689628  
 Conc: 340.27 ng/ml

Instrument :  
 ECD\_O  
 ClientSampleId :



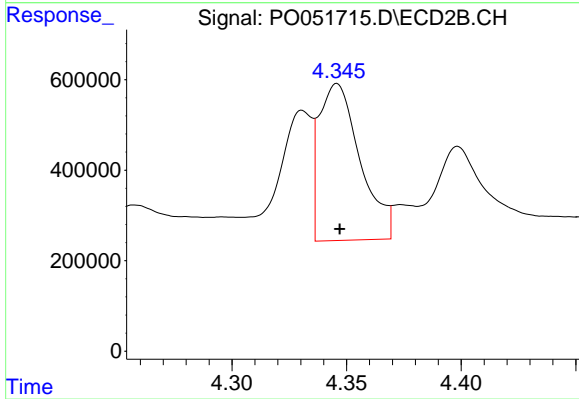
#3 AR-1016-1

R.T.: 4.330 min  
 Delta R.T.: -0.002 min  
 Response: 3026806  
 Conc: 408.15 ng/ml



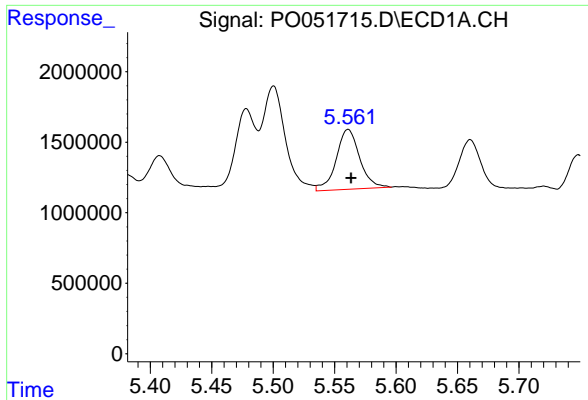
#4 AR-1016-2

R.T.: 5.500 min  
 Delta R.T.: -0.002 min  
 Response: 9870063  
 Conc: 292.07 ng/ml



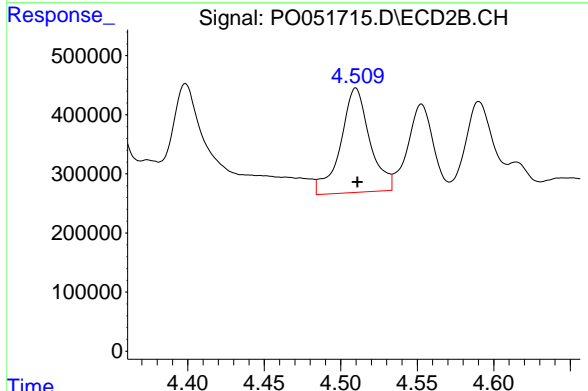
#4 AR-1016-2

R.T.: 4.346 min  
 Delta R.T.: -0.001 min  
 Response: 4313687  
 Conc: 352.70 ng/ml

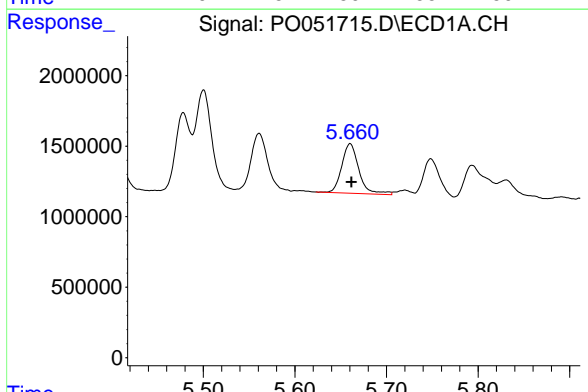


#5 AR-1016-3  
 R.T.: 5.561 min  
 Delta R.T.: -0.002 min  
 Response: 5673089  
 Conc: 284.24 ng/ml

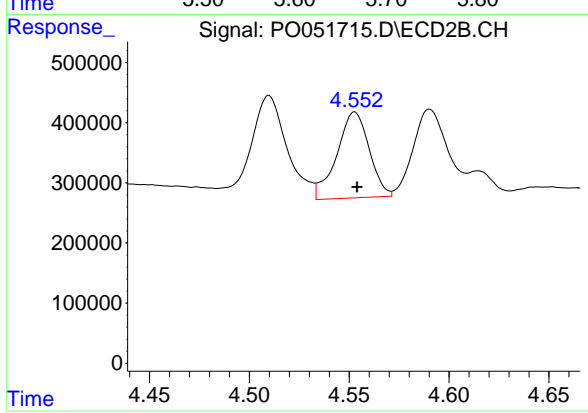
Instrument :  
 ECD\_O  
 ClientSampleId :



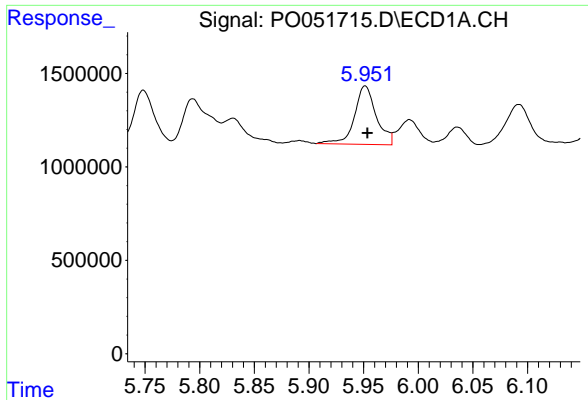
#5 AR-1016-3  
 R.T.: 4.510 min  
 Delta R.T.: 0.000 min  
 Response: 2348072  
 Conc: 384.58 ng/ml



#6 AR-1016-4  
 R.T.: 5.660 min  
 Delta R.T.: -0.001 min  
 Response: 4568032  
 Conc: 275.06 ng/ml

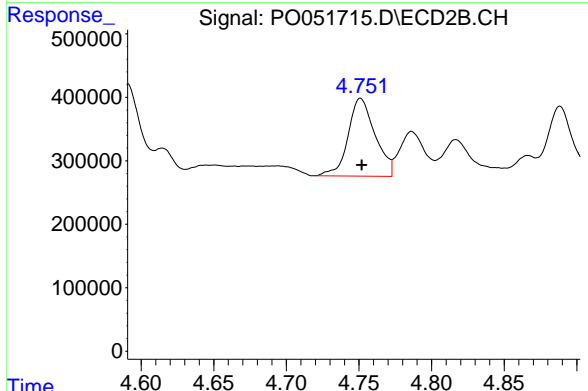


#6 AR-1016-4  
 R.T.: 4.553 min  
 Delta R.T.: -0.001 min  
 Response: 1615167  
 Conc: 304.39 ng/ml

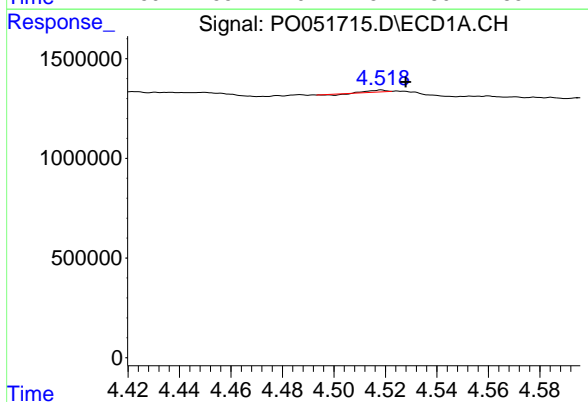


#7 AR-1016-5  
 R.T.: 5.951 min  
 Delta R.T.: -0.002 min  
 Response: 4361521  
 Conc: 274.08 ng/ml

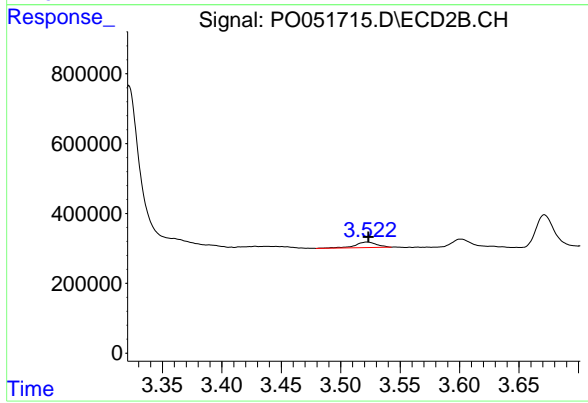
Instrument :  
 ECD\_O  
 ClientSampleId :



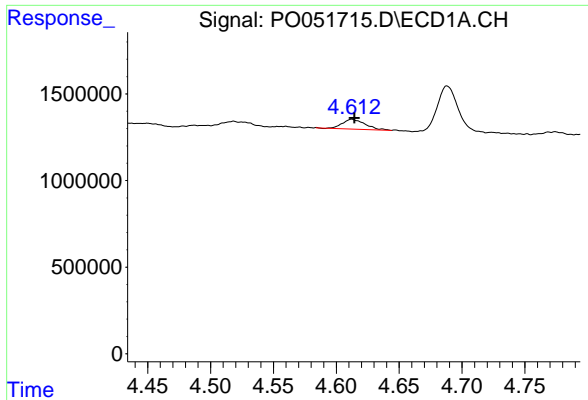
#7 AR-1016-5  
 R.T.: 4.751 min  
 Delta R.T.: 0.000 min  
 Response: 1587647  
 Conc: 243.27 ng/ml



#8 AR-1221-1  
 R.T.: 4.518 min  
 Delta R.T.: -0.009 min  
 Response: 27352  
 Conc: 3.85 ng/ml

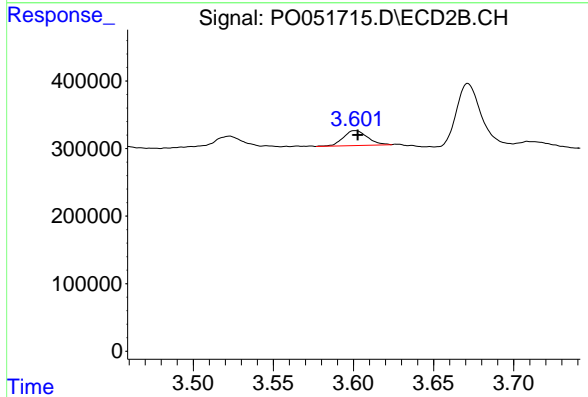


#8 AR-1221-1  
 R.T.: 3.523 min  
 Delta R.T.: 0.000 min  
 Response: 199622  
 Conc: 88.76 ng/ml

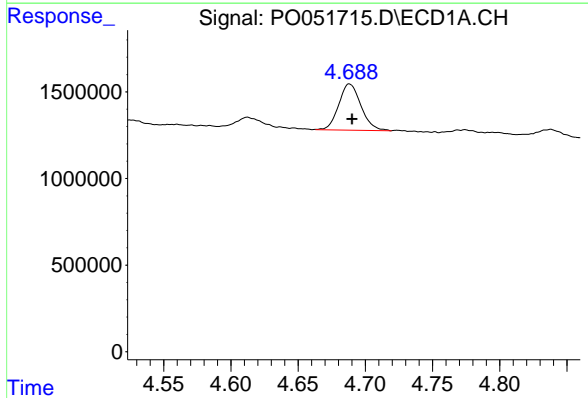


#9 AR-1221-2  
 R.T.: 4.612 min  
 Delta R.T.: -0.002 min  
 Response: 722222  
 Conc: 137.84 ng/ml

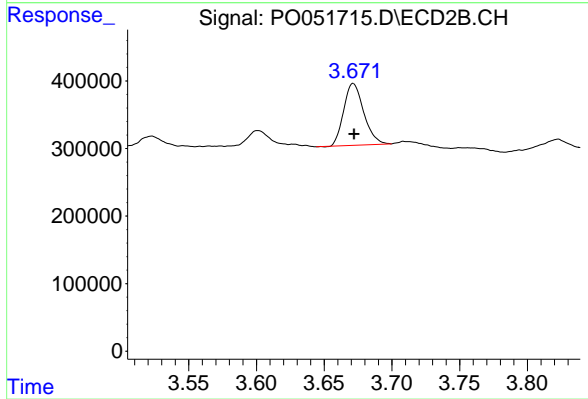
Instrument :  
 ECD\_O  
 ClientSampleId :



#9 AR-1221-2  
 R.T.: 3.601 min  
 Delta R.T.: -0.001 min  
 Response: 230834  
 Conc: 133.13 ng/ml

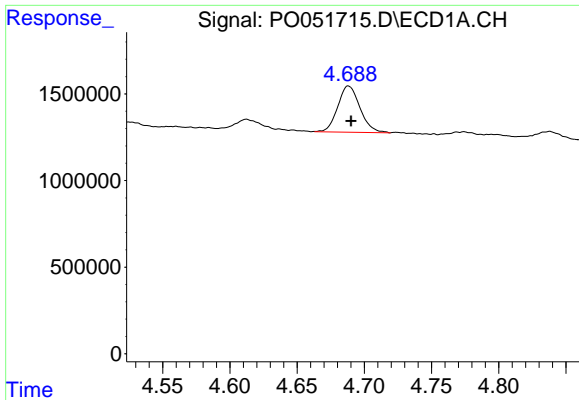


#10 AR-1221-3  
 R.T.: 4.688 min  
 Delta R.T.: -0.002 min  
 Response: 3063835  
 Conc: 185.86 ng/ml



#10 AR-1221-3  
 R.T.: 3.671 min  
 Delta R.T.: 0.000 min  
 Response: 943198  
 Conc: 171.63 ng/ml

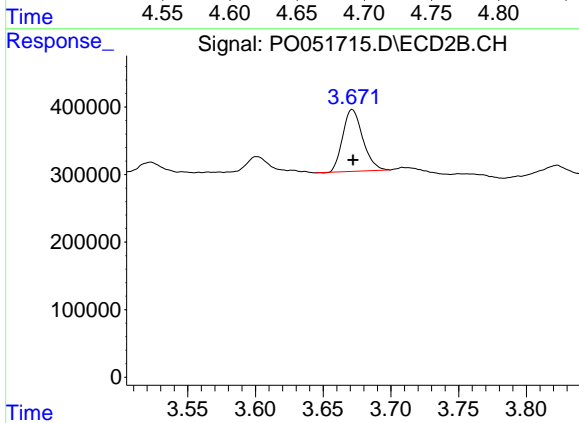




#11 AR-1232-1

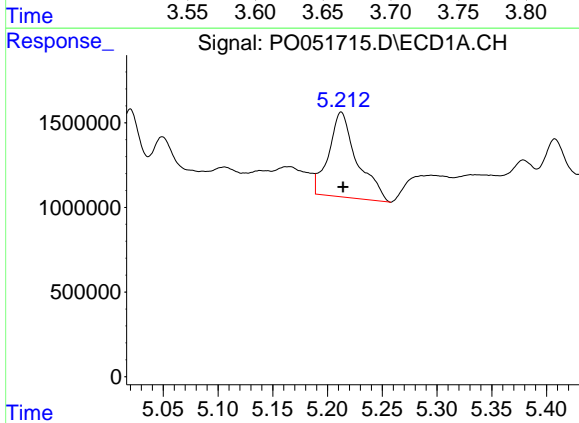
R.T.: 4.688 min  
 Delta R.T.: -0.002 min  
 Response: 3063835  
 Conc: 230.71 ng/ml

Instrument :  
 ECD\_O  
 ClientSampleId :



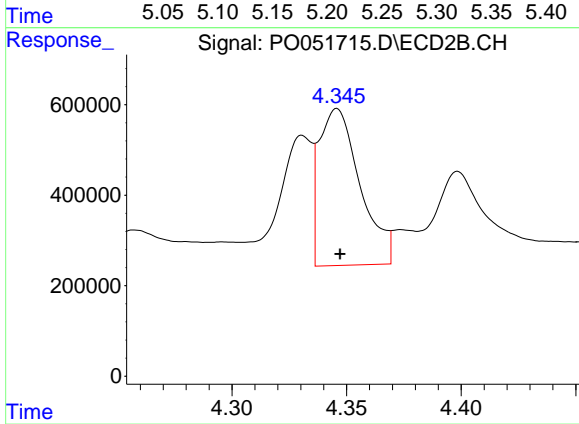
#11 AR-1232-1

R.T.: 3.671 min  
 Delta R.T.: 0.000 min  
 Response: 943198  
 Conc: 203.70 ng/ml



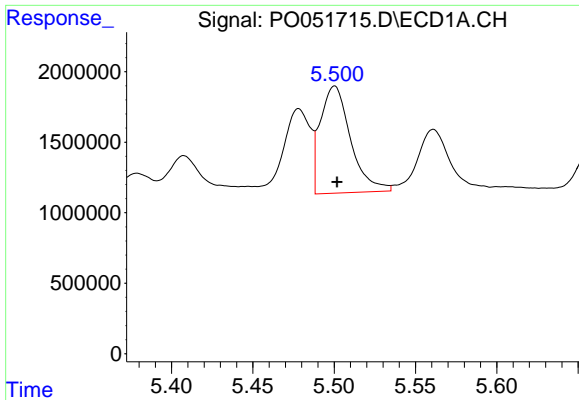
#12 AR-1232-2

R.T.: 5.213 min  
 Delta R.T.: -0.002 min  
 Response: 9029949  
 Conc: 1243.16 ng/ml



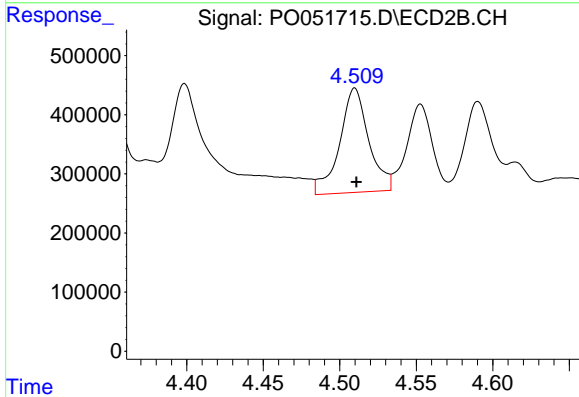
#12 AR-1232-2

R.T.: 4.346 min  
 Delta R.T.: -0.001 min  
 Response: 4313687  
 Conc: 805.44 ng/ml

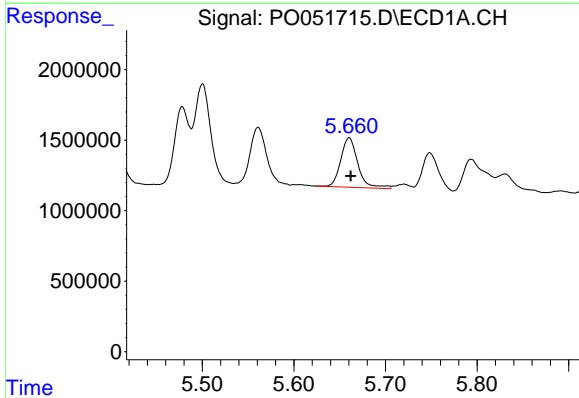


#13 AR-1232-3  
 R.T.: 5.500 min  
 Delta R.T.: -0.001 min  
 Response: 9870063  
 Conc: 689.40 ng/ml

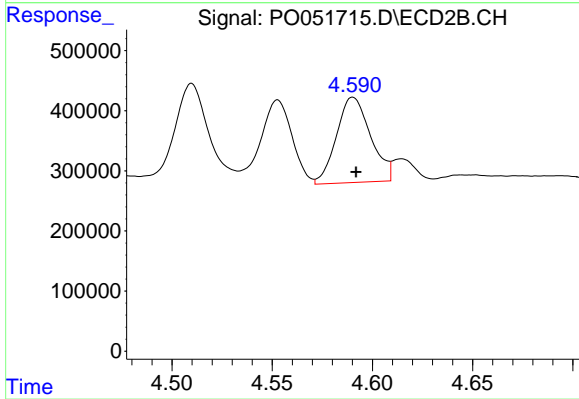
Instrument :  
 ECD\_O  
 ClientSampleId :



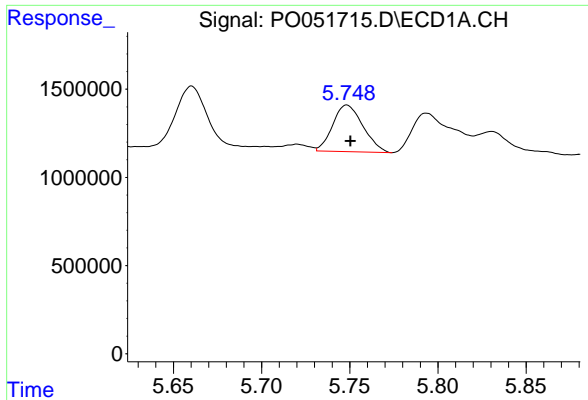
#13 AR-1232-3  
 R.T.: 4.510 min  
 Delta R.T.: -0.001 min  
 Response: 2348072  
 Conc: 898.31 ng/ml



#14 AR-1232-4  
 R.T.: 5.660 min  
 Delta R.T.: -0.002 min  
 Response: 4568032  
 Conc: 641.61 ng/ml



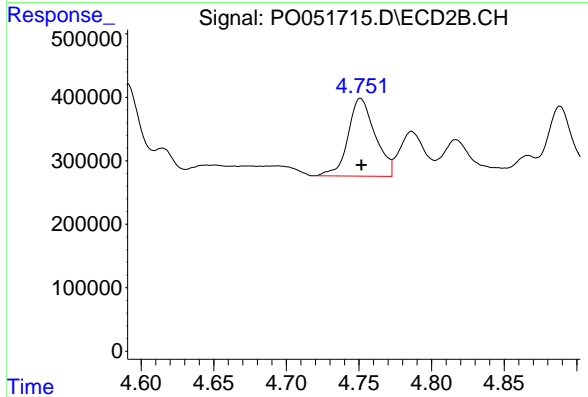
#14 AR-1232-4  
 R.T.: 4.590 min  
 Delta R.T.: -0.001 min  
 Response: 1683750  
 Conc: 763.93 ng/ml



#15 AR-1232-5

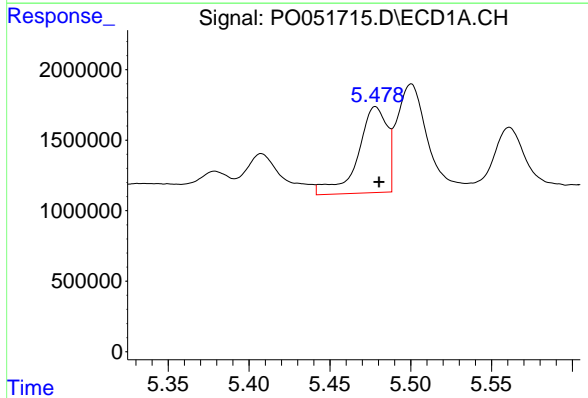
R.T.: 5.748 min  
 Delta R.T.: -0.002 min  
 Response: 3165574  
 Conc: 640.44 ng/ml

Instrument :  
 ECD\_O  
 ClientSampled :



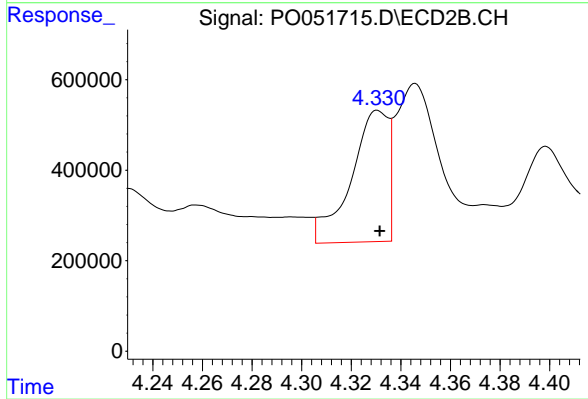
#15 AR-1232-5

R.T.: 4.751 min  
 Delta R.T.: 0.000 min  
 Response: 1587647  
 Conc: 627.20 ng/ml



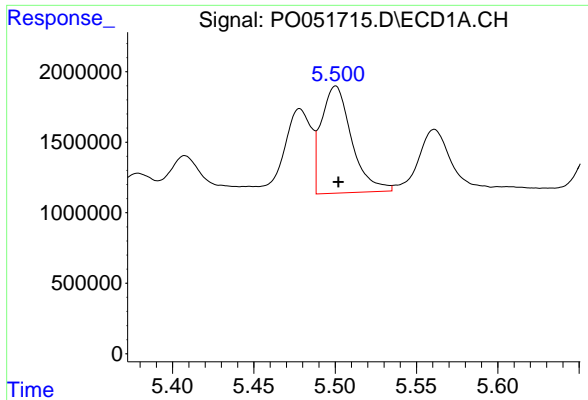
#16 AR-1242-1

R.T.: 5.478 min  
 Delta R.T.: -0.002 min  
 Response: 7689628  
 Conc: 428.26 ng/ml



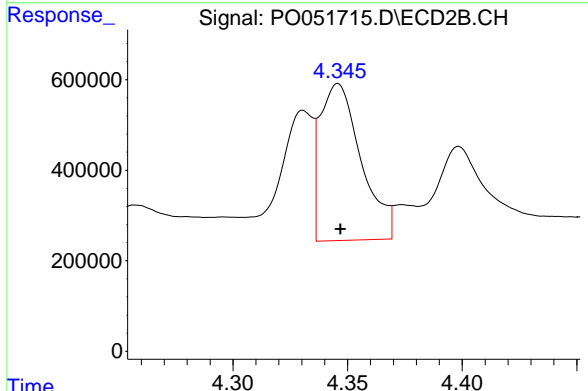
#16 AR-1242-1

R.T.: 4.330 min  
 Delta R.T.: -0.001 min  
 Response: 3026806  
 Conc: 510.08 ng/ml

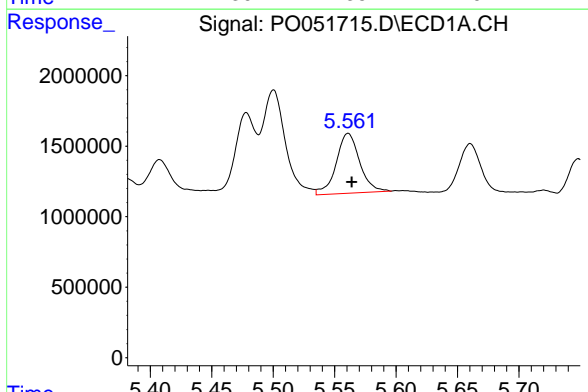


#17 AR-1242-2  
 R.T.: 5.500 min  
 Delta R.T.: -0.002 min  
 Response: 9870063  
 Conc: 362.92 ng/ml

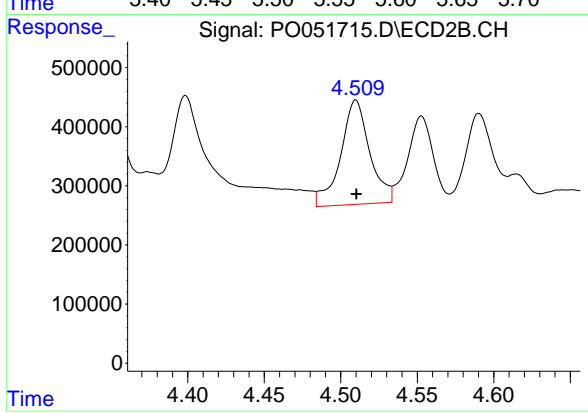
Instrument :  
 ECD\_O  
 ClientSampleId :



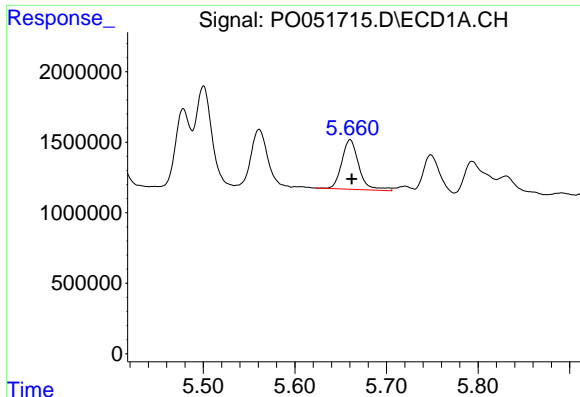
#17 AR-1242-2  
 R.T.: 4.346 min  
 Delta R.T.: -0.001 min  
 Response: 4313687  
 Conc: 432.17 ng/ml



#18 AR-1242-3  
 R.T.: 5.561 min  
 Delta R.T.: -0.003 min  
 Response: 5673089  
 Conc: 355.23 ng/ml



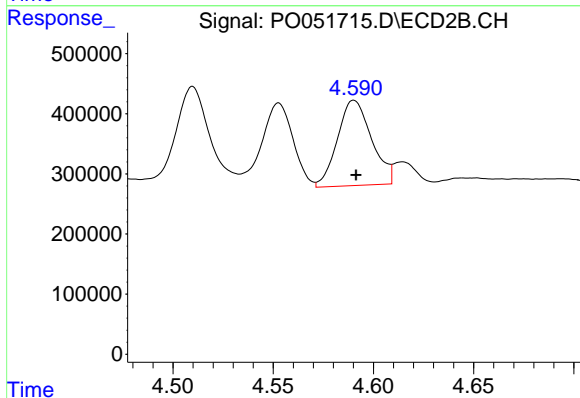
#18 AR-1242-3  
 R.T.: 4.510 min  
 Delta R.T.: 0.000 min  
 Response: 2348072  
 Conc: 473.39 ng/ml



#19 AR-1242-4

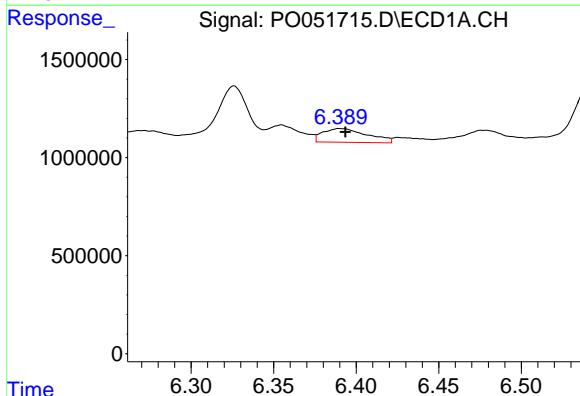
R.T.: 5.660 min  
 Delta R.T.: -0.002 min  
 Response: 4568032  
 Conc: 345.93 ng/ml

Instrument :  
 ECD\_O  
 ClientSampleId :



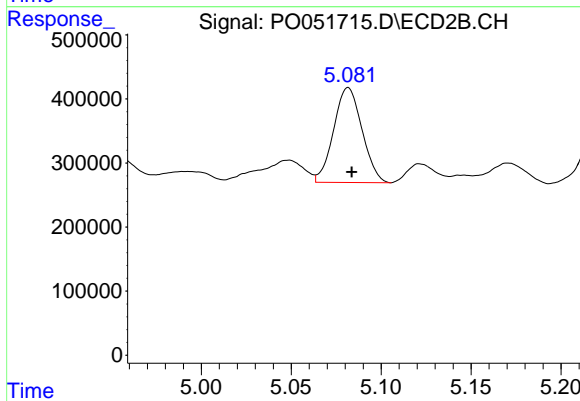
#19 AR-1242-4

R.T.: 4.590 min  
 Delta R.T.: -0.001 min  
 Response: 1683750  
 Conc: 355.33 ng/ml



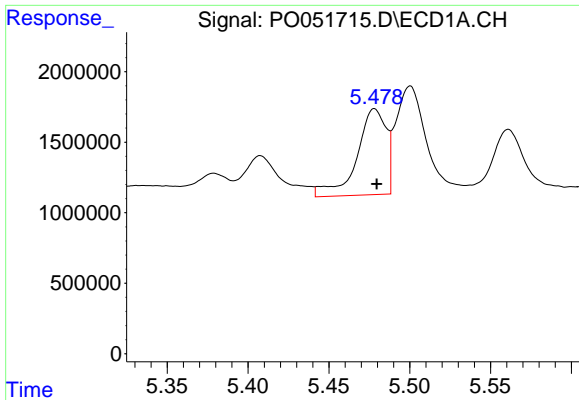
#20 AR-1242-5

R.T.: 6.390 min  
 Delta R.T.: -0.003 min  
 Response: 1323394  
 Conc: 99.01 ng/ml



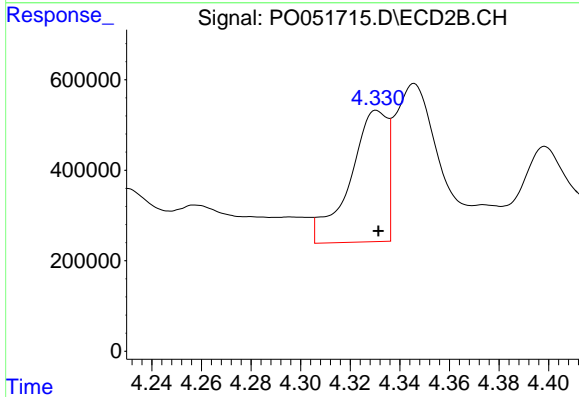
#20 AR-1242-5

R.T.: 5.082 min  
 Delta R.T.: -0.002 min  
 Response: 1626711  
 Conc: 269.87 ng/ml

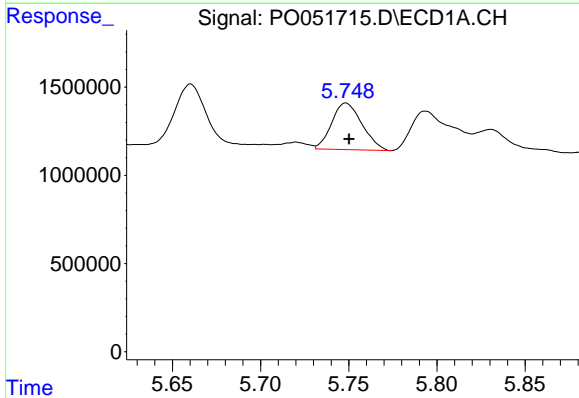


#21 AR-1248-1  
 R.T.: 5.478 min  
 Delta R.T.: -0.001 min  
 Response: 7689628  
 Conc: 499.49 ng/ml

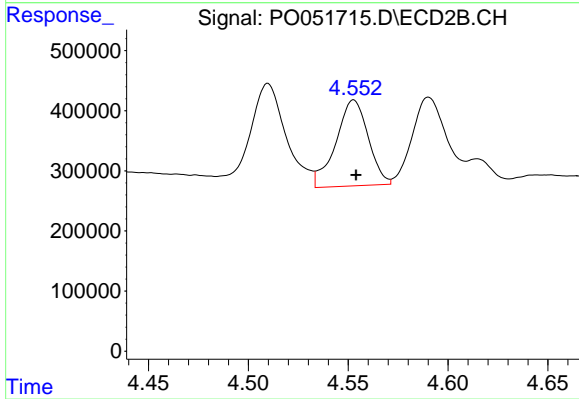
Instrument :  
 ECD\_O  
 ClientSampleId :



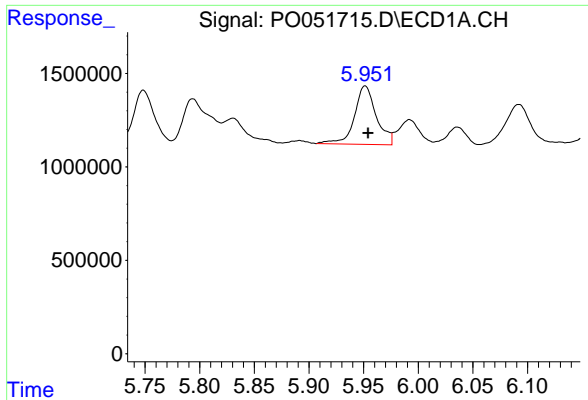
#21 AR-1248-1  
 R.T.: 4.330 min  
 Delta R.T.: 0.000 min  
 Response: 3026806  
 Conc: 561.88 ng/ml



#22 AR-1248-2  
 R.T.: 5.748 min  
 Delta R.T.: -0.002 min  
 Response: 3165574  
 Conc: 148.90 ng/ml

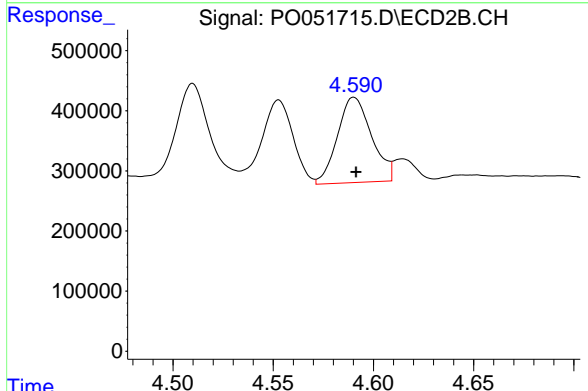


#22 AR-1248-2  
 R.T.: 4.553 min  
 Delta R.T.: -0.001 min  
 Response: 1615167  
 Conc: 204.70 ng/ml

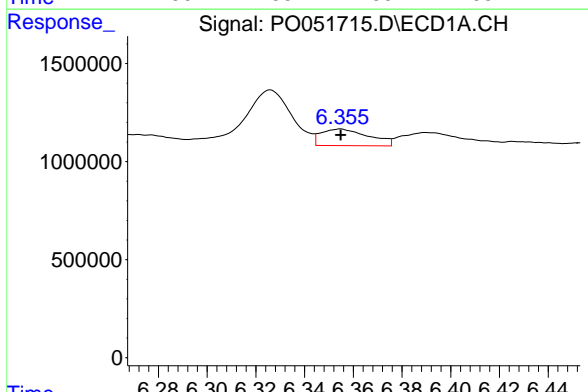


#23 AR-1248-3  
 R.T.: 5.951 min  
 Delta R.T.: -0.003 min  
 Response: 4361521  
 Conc: 183.83 ng/ml

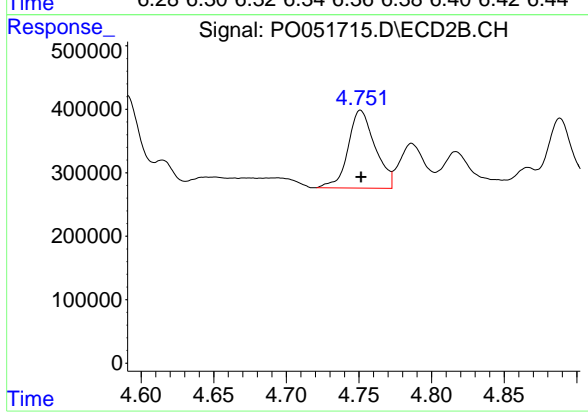
Instrument :  
 ECD\_O  
 ClientSampleId :



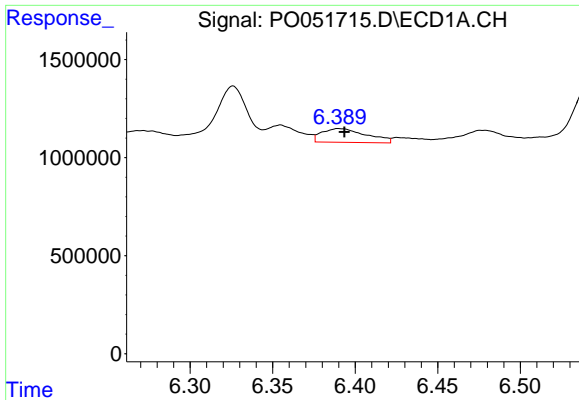
#23 AR-1248-3  
 R.T.: 4.590 min  
 Delta R.T.: 0.000 min  
 Response: 1683750  
 Conc: 214.77 ng/ml



#24 AR-1248-4  
 R.T.: 6.355 min  
 Delta R.T.: 0.000 min  
 Response: 1155557  
 Conc: 43.72 ng/ml



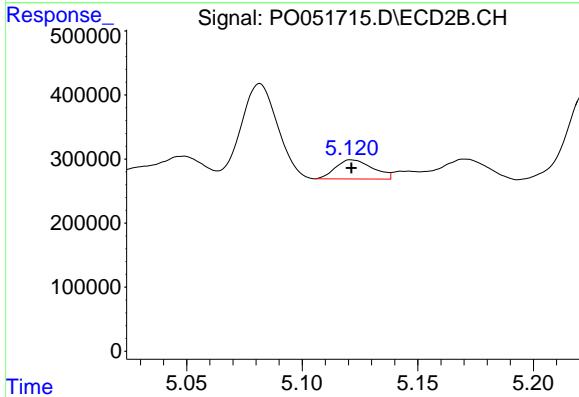
#24 AR-1248-4  
 R.T.: 4.751 min  
 Delta R.T.: 0.000 min  
 Response: 1587647  
 Conc: 163.65 ng/ml



#25 AR-1248-5

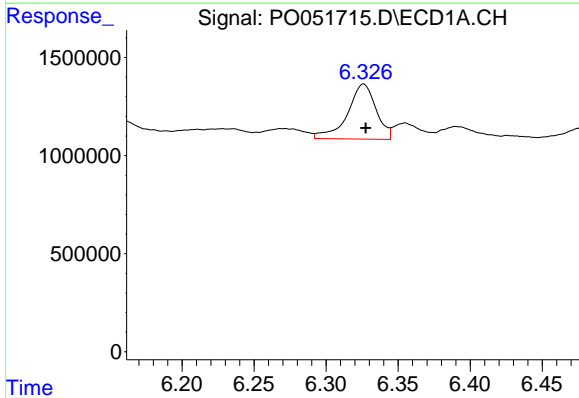
R.T.: 6.390 min  
 Delta R.T.: -0.003 min  
 Response: 1323394  
 Conc: 52.77 ng/ml

Instrument :  
 ECD\_O  
 ClientSampled :



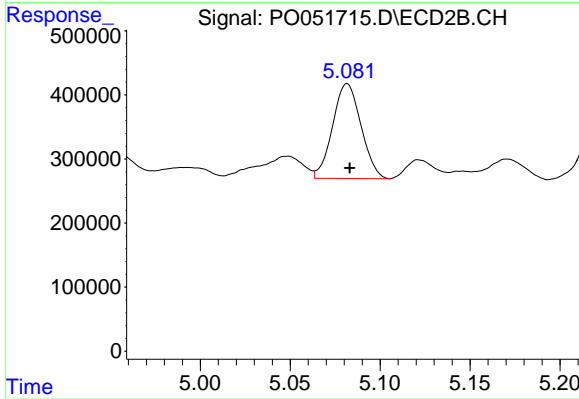
#25 AR-1248-5

R.T.: 5.121 min  
 Delta R.T.: 0.000 min  
 Response: 333149  
 Conc: 35.29 ng/ml



#26 AR-1254-1

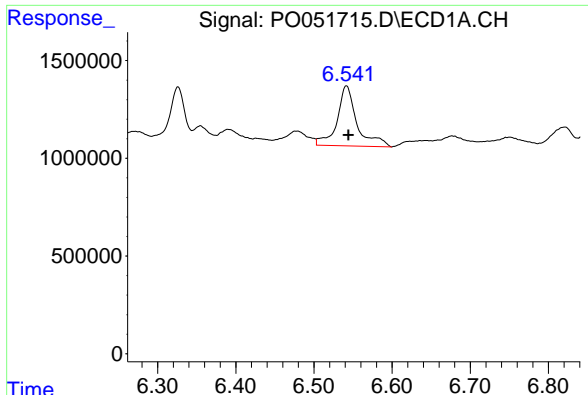
R.T.: 6.326 min  
 Delta R.T.: -0.001 min  
 Response: 3865952  
 Conc: 156.53 ng/ml



#26 AR-1254-1

R.T.: 5.082 min  
 Delta R.T.: -0.001 min  
 Response: 1626711  
 Conc: 118.32 ng/ml

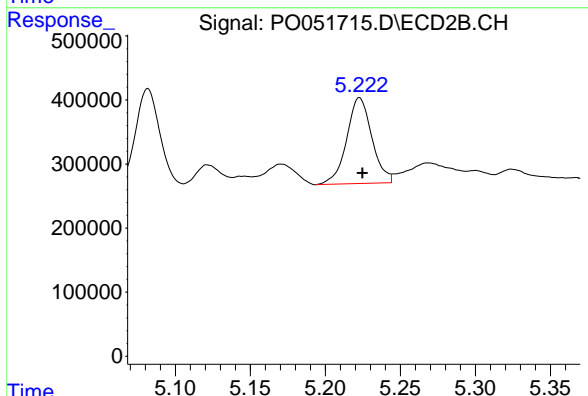




#27 AR-1254-2

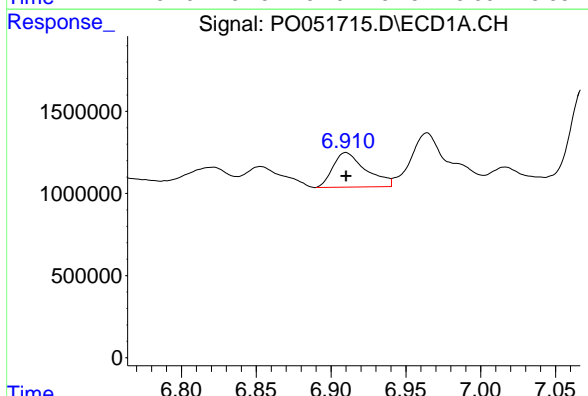
R.T.: 6.542 min  
 Delta R.T.: -0.003 min  
 Response: 5406760  
 Conc: 138.83 ng/ml

Instrument :  
 ECD\_O  
 ClientSampleId :



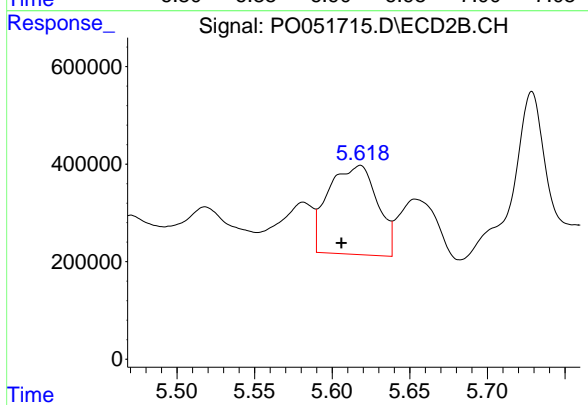
#27 AR-1254-2

R.T.: 5.223 min  
 Delta R.T.: -0.002 min  
 Response: 1566839  
 Conc: 131.29 ng/ml



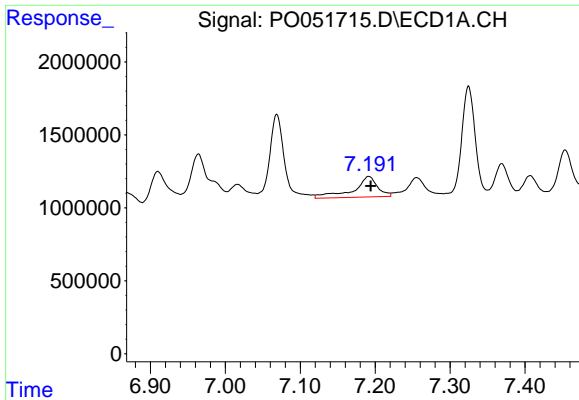
#28 AR-1254-3

R.T.: 6.910 min  
 Delta R.T.: 0.000 min  
 Response: 3236933  
 Conc: 80.30 ng/ml



#28 AR-1254-3

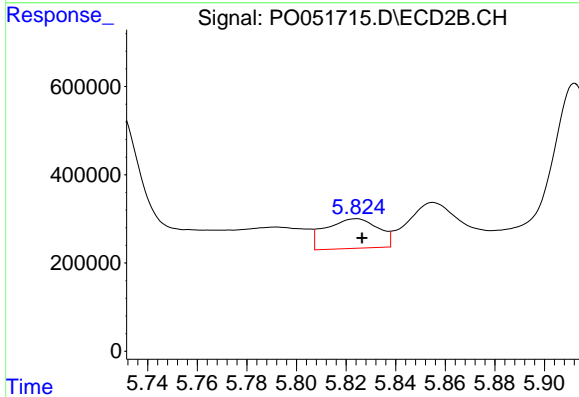
R.T.: 5.618 min  
 Delta R.T.: 0.012 min  
 Response: 3990691  
 Conc: 212.40 ng/ml



#29 AR-1254-4

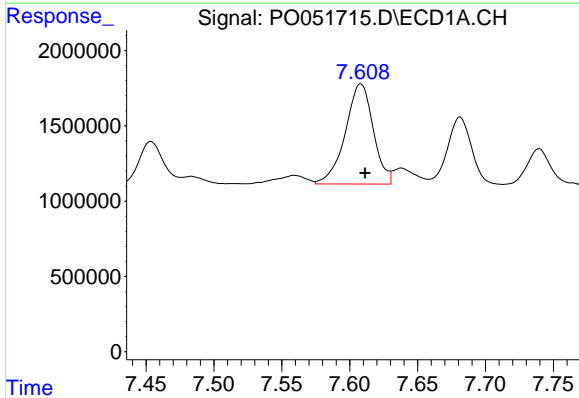
R.T.: 7.191 min  
 Delta R.T.: -0.002 min  
 Response: 3149556  
 Conc: 100.98 ng/ml

Instrument :  
 ECD\_O  
 ClientSampled :



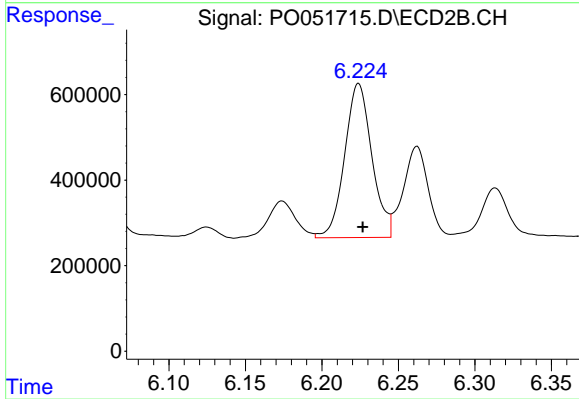
#29 AR-1254-4

R.T.: 5.824 min  
 Delta R.T.: -0.002 min  
 Response: 991073  
 Conc: 86.89 ng/ml



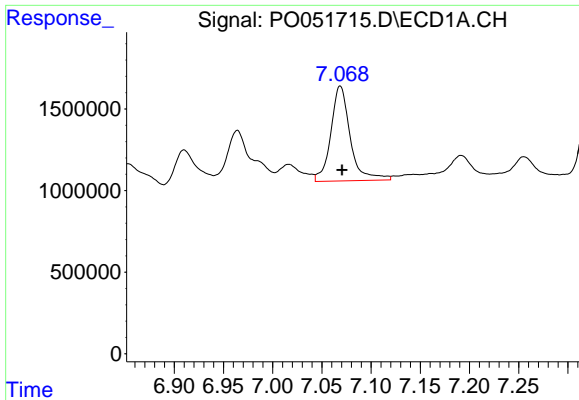
#30 AR-1254-5

R.T.: 7.608 min  
 Delta R.T.: -0.003 min  
 Response: 9534223  
 Conc: 309.64 ng/ml



#30 AR-1254-5

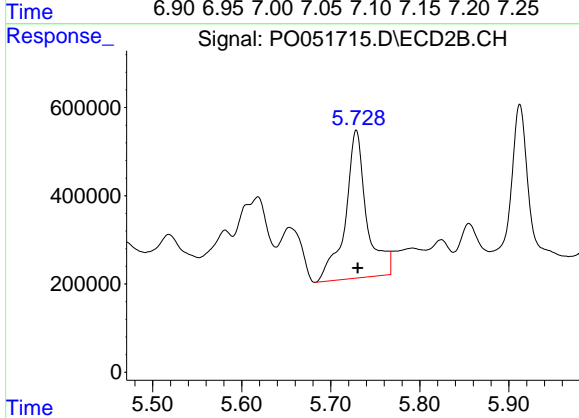
R.T.: 6.224 min  
 Delta R.T.: -0.003 min  
 Response: 4469701  
 Conc: 283.21 ng/ml



#31 AR-1260-1

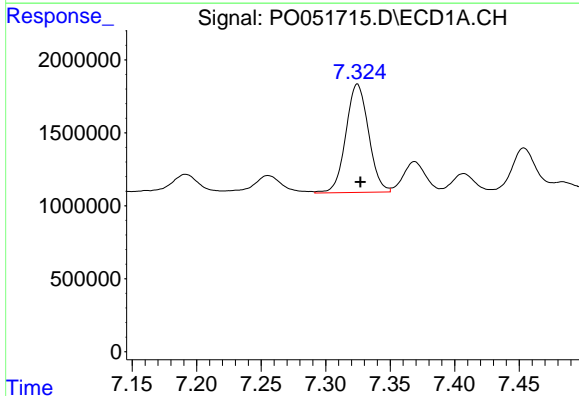
R.T.: 7.069 min  
 Delta R.T.: -0.002 min  
 Response: 8000040  
 Conc: 265.70 ng/ml

Instrument :  
 ECD\_O  
 ClientSampled :



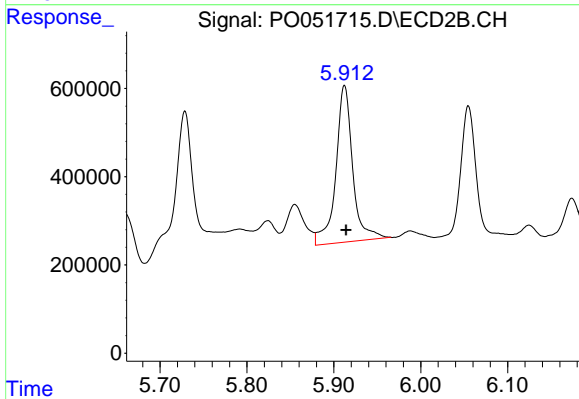
#31 AR-1260-1

R.T.: 5.729 min  
 Delta R.T.: -0.002 min  
 Response: 5577990  
 Conc: 411.17 ng/ml



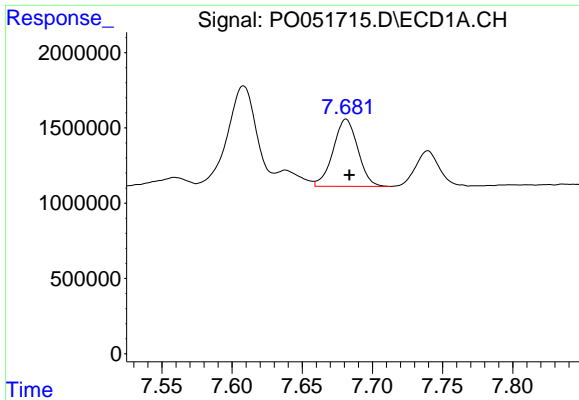
#32 AR-1260-2

R.T.: 7.325 min  
 Delta R.T.: -0.002 min  
 Response: 9091167  
 Conc: 215.35 ng/ml



#32 AR-1260-2

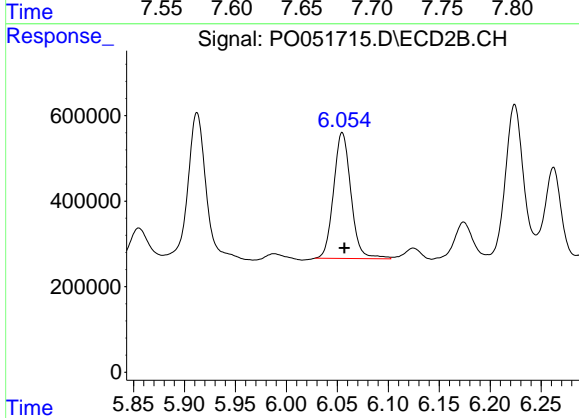
R.T.: 5.912 min  
 Delta R.T.: -0.002 min  
 Response: 4793835  
 Conc: 276.25 ng/ml



#33 AR-1260-3

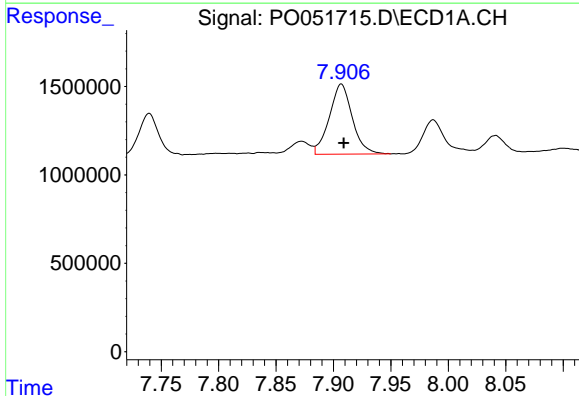
R.T.: 7.681 min  
 Delta R.T.: -0.002 min  
 Response: 5457668  
 Conc: 187.85 ng/ml

Instrument :  
 ECD\_O  
 ClientSampleId :



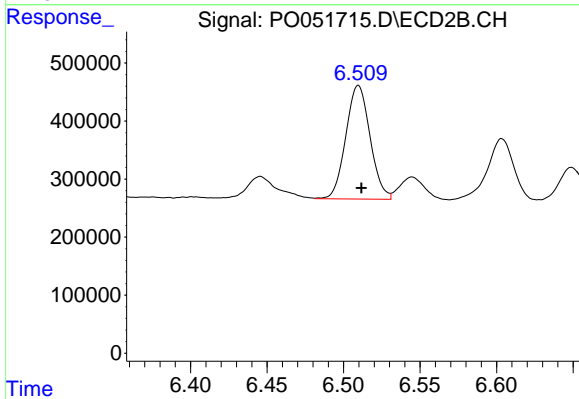
#33 AR-1260-3

R.T.: 6.055 min  
 Delta R.T.: -0.002 min  
 Response: 3488287  
 Conc: 227.72 ng/ml



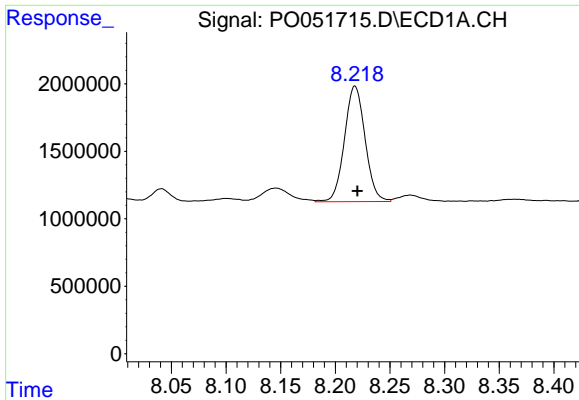
#34 AR-1260-4

R.T.: 7.907 min  
 Delta R.T.: -0.002 min  
 Response: 5509244  
 Conc: 200.32 ng/ml



#34 AR-1260-4

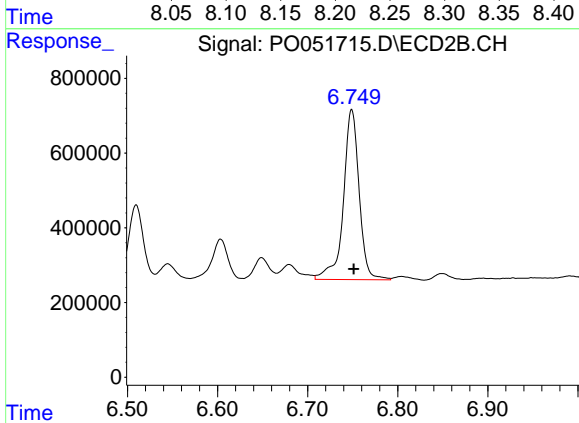
R.T.: 6.510 min  
 Delta R.T.: -0.002 min  
 Response: 2169116  
 Conc: 213.45 ng/ml



#35 AR-1260-5

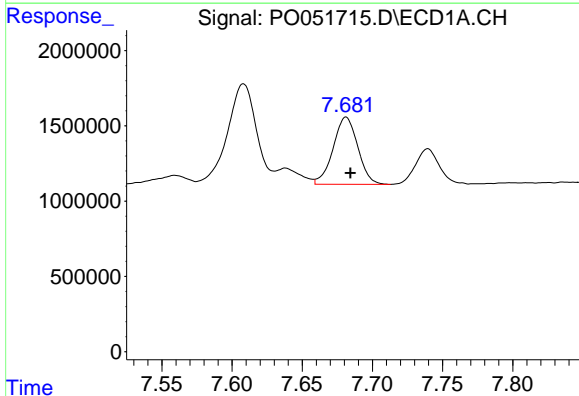
R.T.: 8.218 min  
 Delta R.T.: -0.002 min  
 Response: 11249667  
 Conc: 195.28 ng/ml

Instrument :  
 ECD\_O  
 ClientSampled :



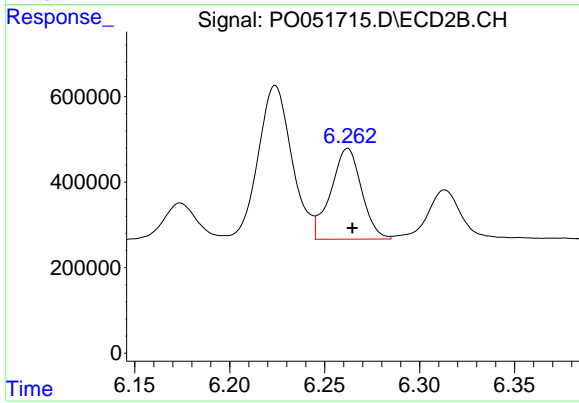
#35 AR-1260-5

R.T.: 6.749 min  
 Delta R.T.: -0.002 min  
 Response: 5547151  
 Conc: 214.91 ng/ml



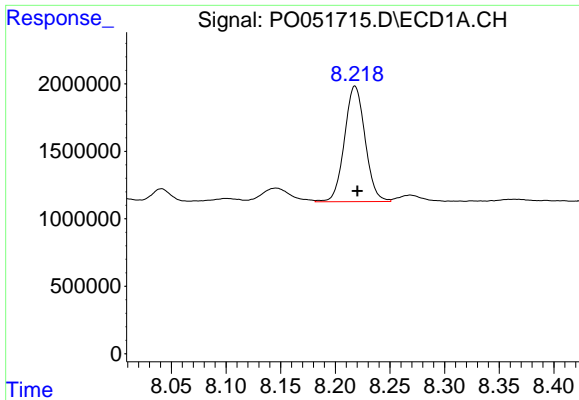
#36 AR-1262-1

R.T.: 7.681 min  
 Delta R.T.: -0.003 min  
 Response: 5457668  
 Conc: 116.52 ng/ml



#36 AR-1262-1

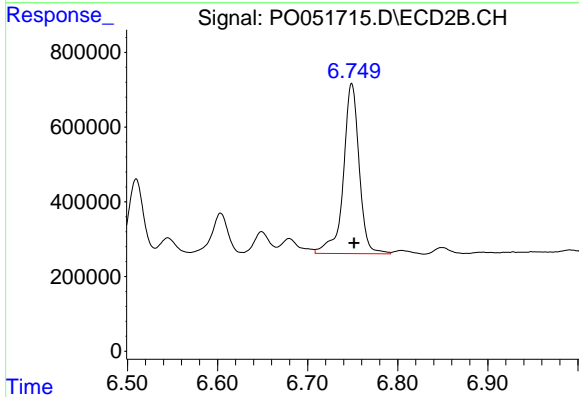
R.T.: 6.262 min  
 Delta R.T.: -0.003 min  
 Response: 2397856  
 Conc: 128.35 ng/ml



#37 AR-1262-2

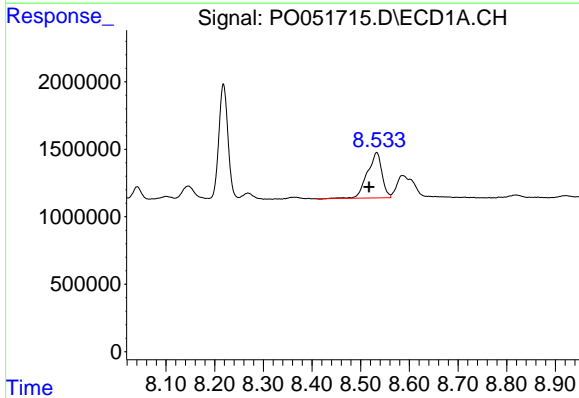
R.T.: 8.218 min  
 Delta R.T.: -0.002 min  
 Response: 11249667  
 Conc: 160.93 ng/ml

Instrument :  
 ECD\_O  
 ClientSampleId :



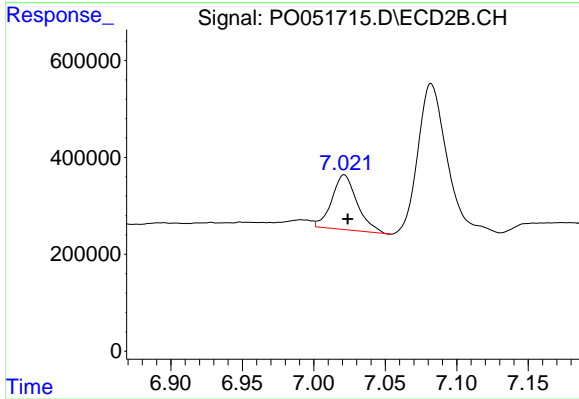
#37 AR-1262-2

R.T.: 6.749 min  
 Delta R.T.: -0.003 min  
 Response: 5547151  
 Conc: 183.88 ng/ml



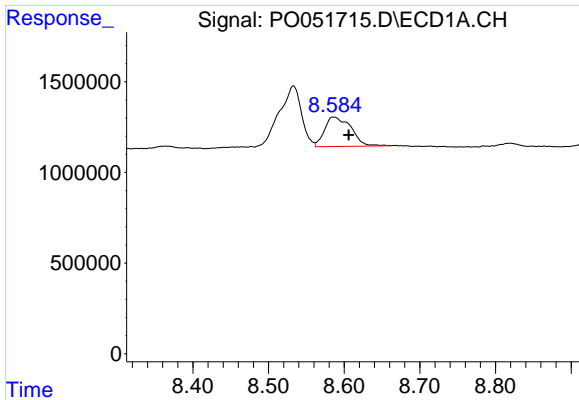
#38 AR-1262-3

R.T.: 8.533 min  
 Delta R.T.: 0.015 min  
 Response: 6993592  
 Conc: 158.53 ng/ml



#38 AR-1262-3

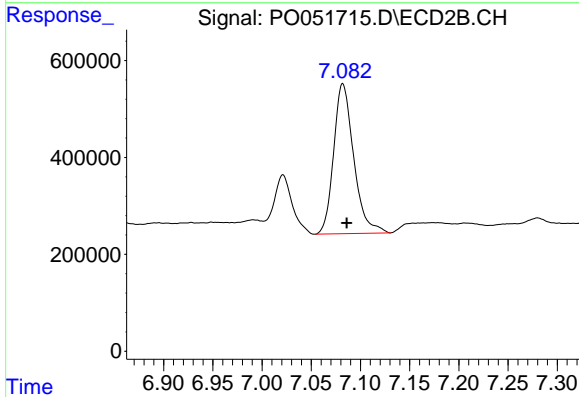
R.T.: 7.021 min  
 Delta R.T.: -0.002 min  
 Response: 1394576  
 Conc: 111.74 ng/ml



#39 AR-1262-4

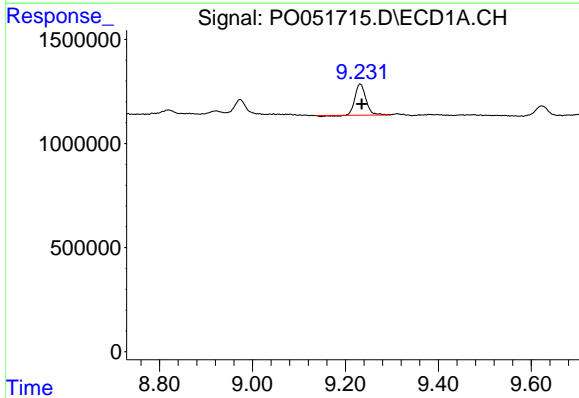
R.T.: 8.586 min  
 Delta R.T.: -0.020 min  
 Response: 3944240  
 Conc: 113.87 ng/ml

Instrument :  
 ECD\_O  
 ClientSampled :



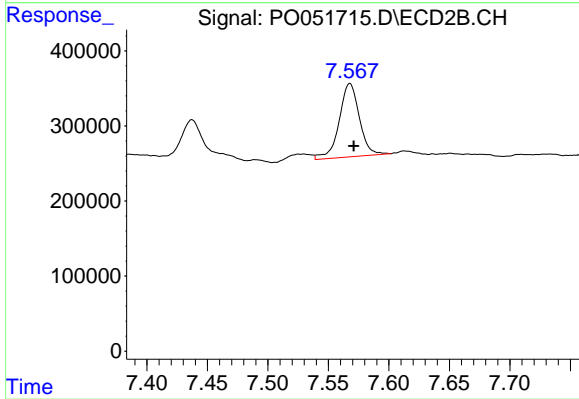
#39 AR-1262-4

R.T.: 7.082 min  
 Delta R.T.: -0.004 min  
 Response: 4393064  
 Conc: 201.28 ng/ml



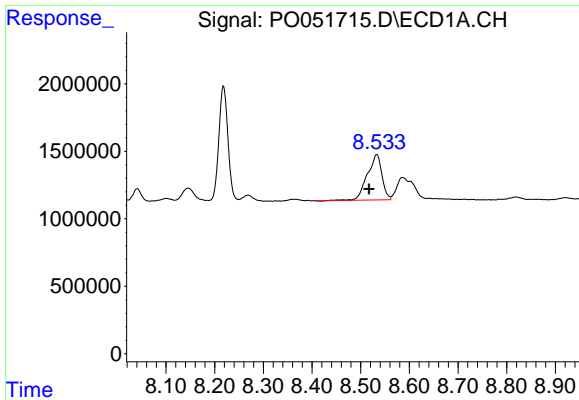
#40 AR-1262-5

R.T.: 9.232 min  
 Delta R.T.: -0.003 min  
 Response: 2394534  
 Conc: 115.93 ng/ml



#40 AR-1262-5

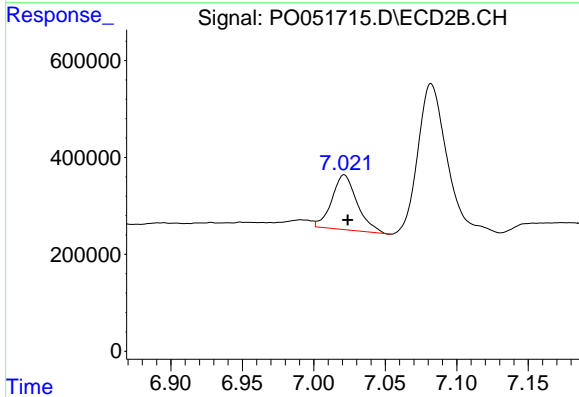
R.T.: 7.568 min  
 Delta R.T.: -0.003 min  
 Response: 1134068  
 Conc: 127.64 ng/ml



#41 AR-1268-1

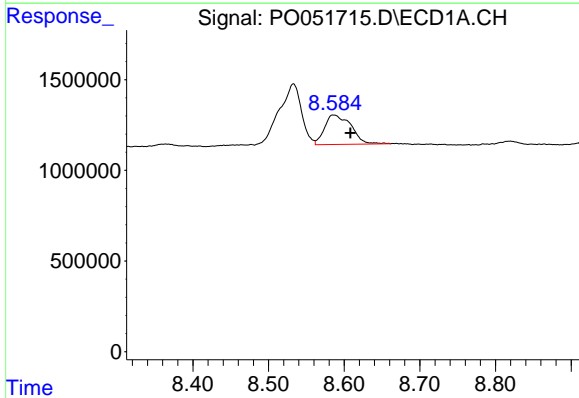
R.T.: 8.533 min  
 Delta R.T.: 0.015 min  
 Response: 6993592  
 Conc: 75.42 ng/ml

Instrument :  
 ECD\_O  
 ClientSampled :



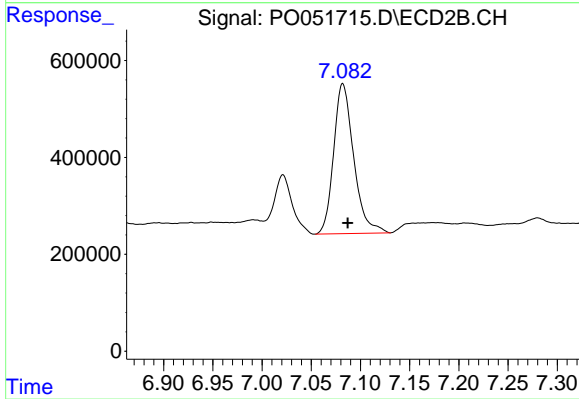
#41 AR-1268-1

R.T.: 7.021 min  
 Delta R.T.: -0.003 min  
 Response: 1394576  
 Conc: 35.32 ng/ml



#42 AR-1268-2

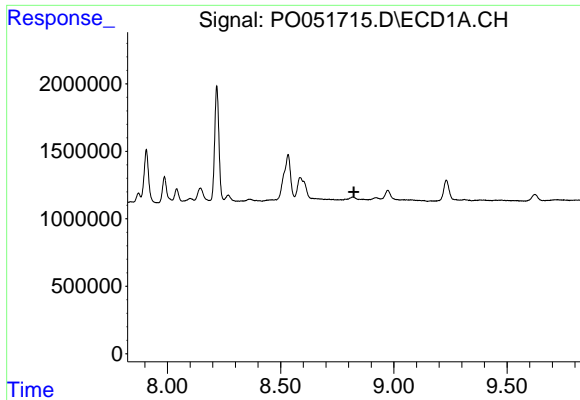
R.T.: 8.586 min  
 Delta R.T.: -0.023 min  
 Response: 3944240  
 Conc: 49.43 ng/ml



#42 AR-1268-2

R.T.: 7.082 min  
 Delta R.T.: -0.005 min  
 Response: 4393064  
 Conc: 119.04 ng/ml

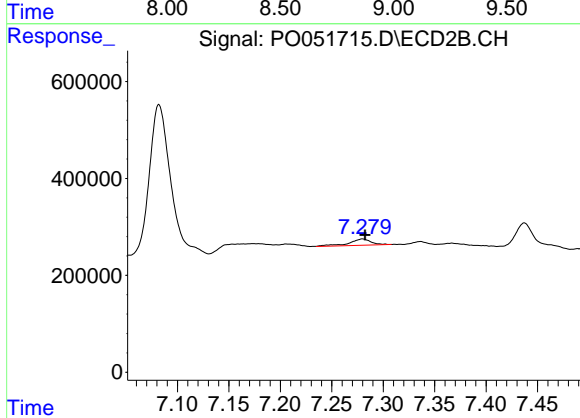




#43 AR-1268-3

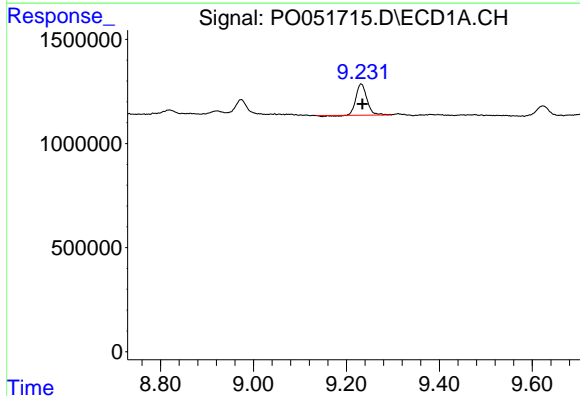
R.T.: 0.000 min  
 Exp R.T.: 8.824 min  
 Response: 0  
 Conc: N.D.

Instrument :  
 ECD\_O  
 ClientSampleId :



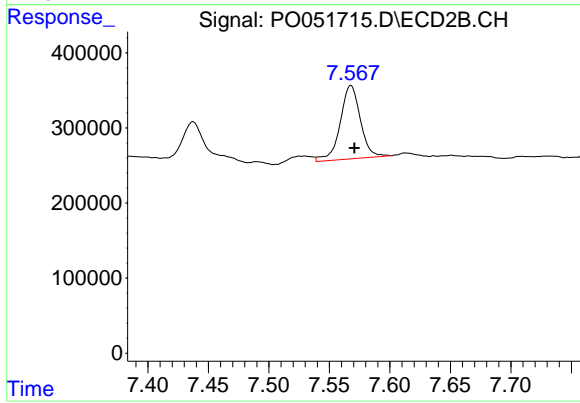
#43 AR-1268-3

R.T.: 7.280 min  
 Delta R.T.: -0.002 min  
 Response: 198748  
 Conc: 6.03 ng/ml



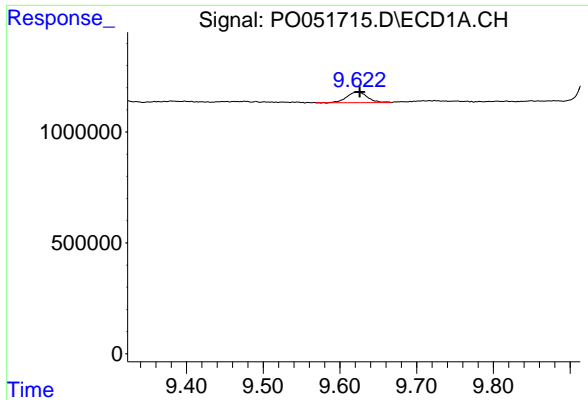
#44 AR-1268-4

R.T.: 9.232 min  
 Delta R.T.: -0.003 min  
 Response: 2394534  
 Conc: 96.67 ng/ml



#44 AR-1268-4

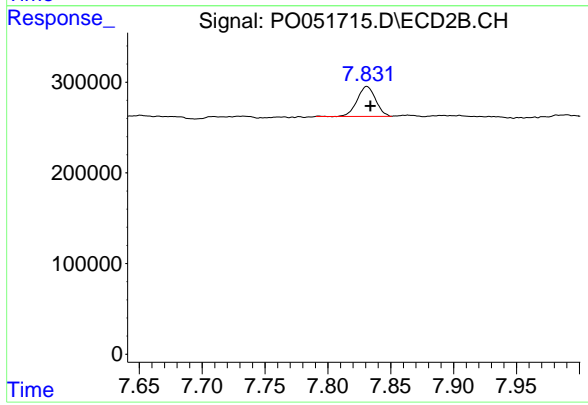
R.T.: 7.568 min  
 Delta R.T.: -0.003 min  
 Response: 1134068  
 Conc: 100.79 ng/ml



#45 AR-1268-5

R.T.: 9.623 min  
Delta R.T.: -0.003 min  
Response: 899141  
Conc: 4.76 ng/ml

Instrument :  
ECD\_O  
ClientSampleId :



#45 AR-1268-5

R.T.: 7.831 min  
Delta R.T.: -0.003 min  
Response: 336240  
Conc: 3.92 ng/ml