

Data Path : Z:\pestpcbsrv\HPCHEM1\ECD\_0\Data\PO112118\  
 Data File : PO051720.D  
 Signal(s) : Signal #1: ECD1A.CH Signal #2: ECD2B.CH  
 Acq On : 21 Nov 2018 16:28  
 Operator : SM/SJ  
 Sample : I.BLK  
 Misc :  
 ALS Vial : 2 Sample Multiplier: 1

Instrument :  
 ECD\_0  
 ClientSampleId :

Integration File signal 1: autoint1.e  
 Integration File signal 2: autoint2.e  
 Quant Time: Nov 21 23:53:02 2018  
 Quant Method : Z:\pestpcbsrv\HPCHEM1\ECD\_0\methods\PO112018.M  
 Quant Title : GC EXTRACTABLES  
 QLast Update : Wed Nov 21 00:55:28 2018  
 Response via : Initial Calibration  
 Integrator: ChemStation 6890 Scale Mode: Small noise peaks clipped

Volume Inj. : 2 µl  
 Signal #1 Phase : ZB-MR1 Signal #2 Phase: ZB-MR2  
 Signal #1 Info : 30Mx0.32mmx 0.50µ Signal #2 Info : 30M x 0.32mm x 0.25µm

Compound	RT#1	RT#2	Resp#1	Resp#2	ng/ml	ng/ml
-----						
System Monitoring Compounds						
1) SA Tetrachlo...	4.317	3.321	20107350	6171376	26.710	25.782
2) SA Decachlor...	9.936	8.042	9217025	4372100	19.869	20.225
Target Compounds						
7) L1 AR-1016-5	0.000	4.778	0	206860	N.D.	31.697 #
15) L3 AR-1232-5	0.000	4.778	0	206860	N.D.	81.720 #
20) L4 AR-1242-5	6.328	0.000	775831	0	58.046	N.D. #
24) L5 AR-1248-4	6.328	4.778	775831	206860	29.354	21.322 #
25) L5 AR-1248-5	6.328	0.000	775831	0	30.938	N.D. #
26) L6 AR-1254-1	6.328	0.000	775831	0	31.413	N.D. #
29) L6 AR-1254-4	7.188	0.000	518766	0	16.632	N.D. #
32) L7 AR-1260-2	0.000	5.897	0	174244	N.D.	10.041 #
-----						

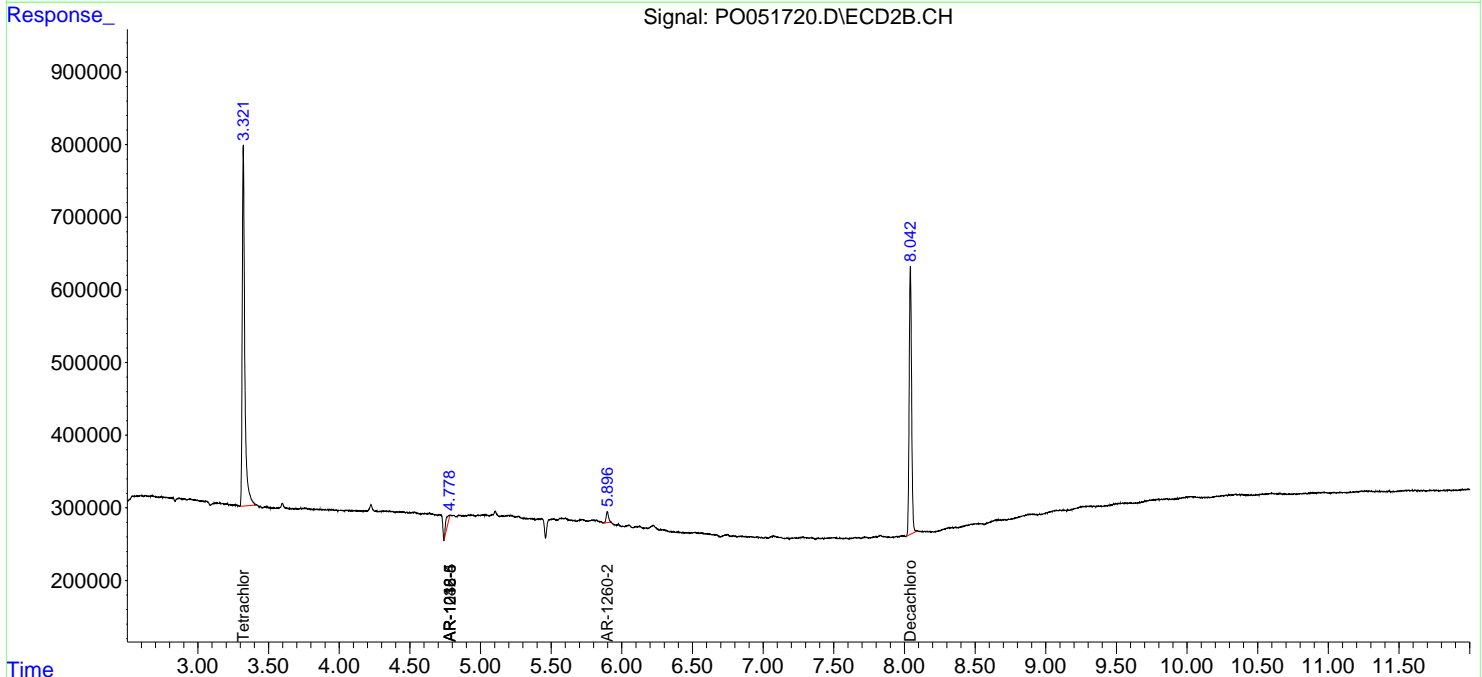
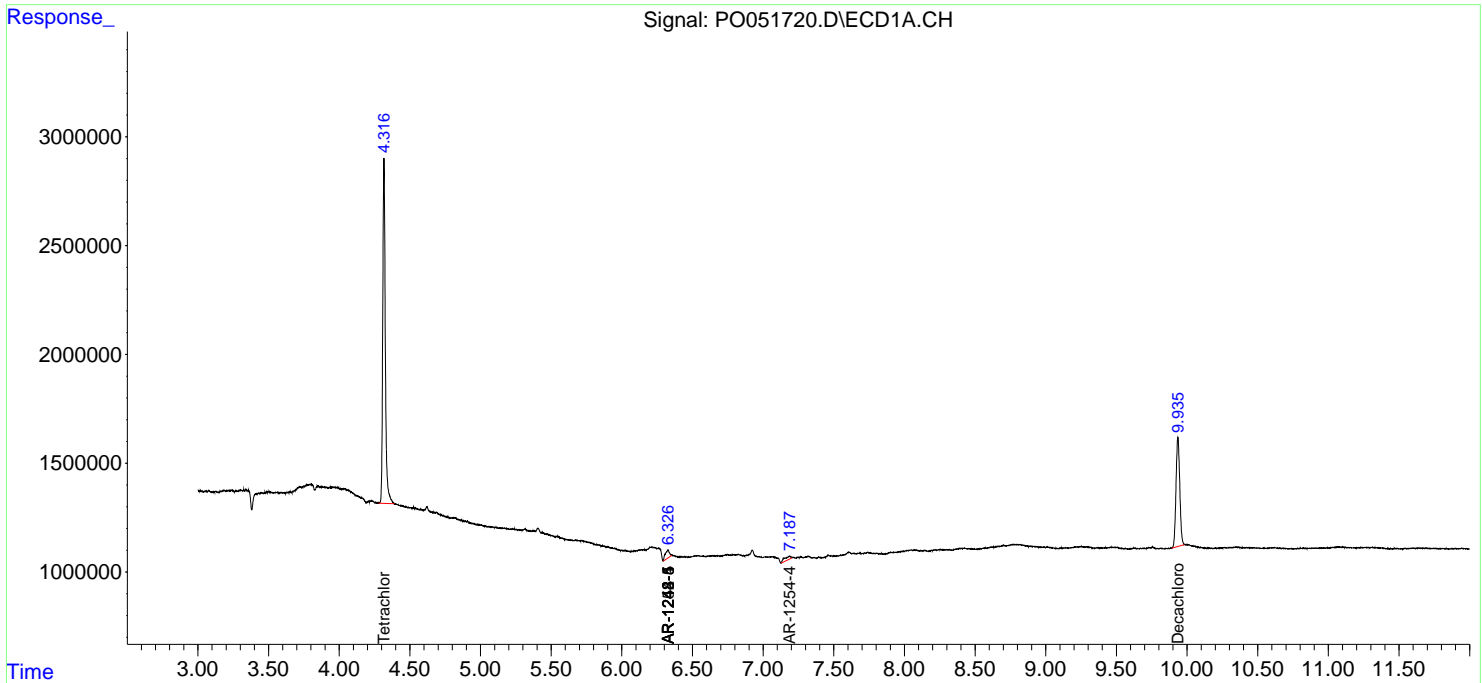
(f)=RT Delta > 1/2 Window (#)=Amounts differ by > 25% (m)=manual int.

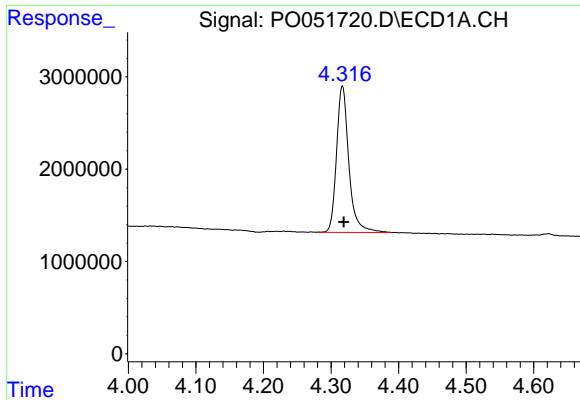
Data Path : Z:\pestpcbsrv\HPCHEM1\ECD\_0\Data\PO112118\  
 Data File : PO051720.D  
 Signal(s) : Signal #1: ECD1A.CH Signal #2: ECD2B.CH  
 Acq On : 21 Nov 2018 16:28  
 Operator : SM/SJ  
 Sample : I.BLK  
 Misc :  
 ALS Vial : 2 Sample Multiplier: 1

Instrument :  
 ECD\_O  
 ClientSampled :

Integration File signal 1: autoint1.e  
 Integration File signal 2: autoint2.e  
 Quant Time: Nov 21 23:53:02 2018  
 Quant Method : Z:\pestpcbsrv\HPCHEM1\ECD\_0\methods\PO112018.M  
 Quant Title : GC EXTRACTABLES  
 QLast Update : Wed Nov 21 00:55:28 2018  
 Response via : Initial Calibration  
 Integrator: ChemStation 6890 Scale Mode: Small noise peaks clipped

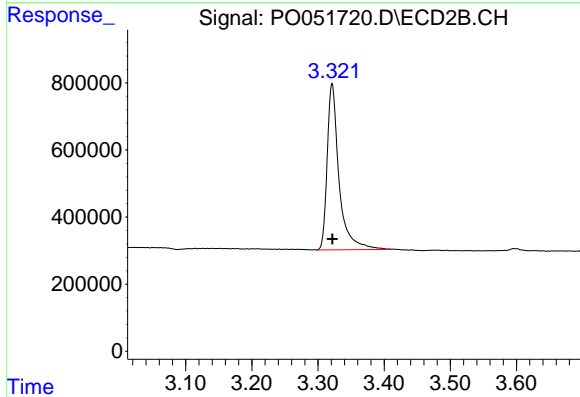
Volume Inj. : 2 µl  
 Signal #1 Phase : ZB-MR1 Signal #2 Phase: ZB-MR2  
 Signal #1 Info : 30Mx0.32mmx 0.50µ Signal #2 Info : 30M x 0.32mm x 0.25µm



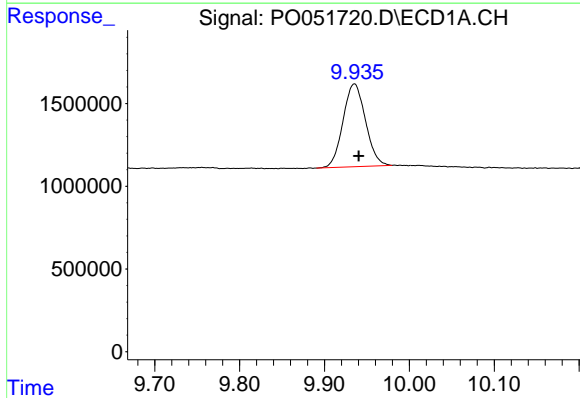


#1 Tetrachloro-m-xylene  
 R.T.: 4.317 min  
 Delta R.T.: -0.002 min  
 Response: 20107350  
 Conc: 26.71 ng/ml

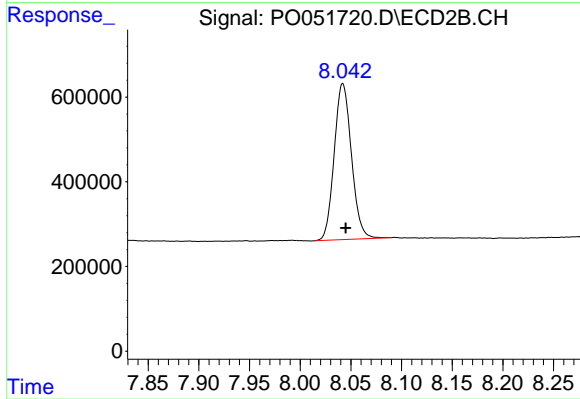
Instrument :  
 ECD\_O  
 ClientSampleId :



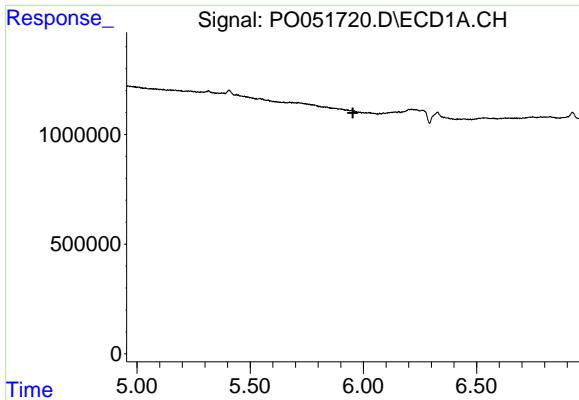
#1 Tetrachloro-m-xylene  
 R.T.: 3.321 min  
 Delta R.T.: 0.000 min  
 Response: 6171376  
 Conc: 25.78 ng/ml



#2 Decachlorobiphenyl  
 R.T.: 9.936 min  
 Delta R.T.: -0.005 min  
 Response: 9217025  
 Conc: 19.87 ng/ml



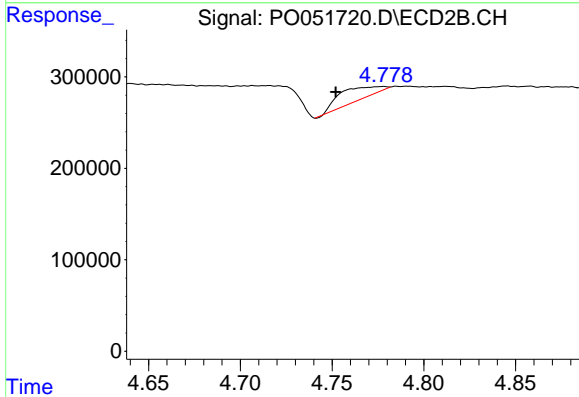
#2 Decachlorobiphenyl  
 R.T.: 8.042 min  
 Delta R.T.: -0.003 min  
 Response: 4372100  
 Conc: 20.22 ng/ml



#7 AR-1016-5

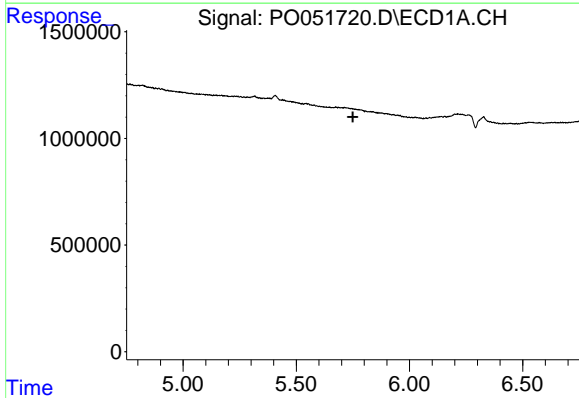
R.T.: 0.000 min  
 Exp R.T. : 5.953 min  
 Response: 0  
 Conc: N.D.

Instrument :  
 ECD\_O  
 ClientSampleId :



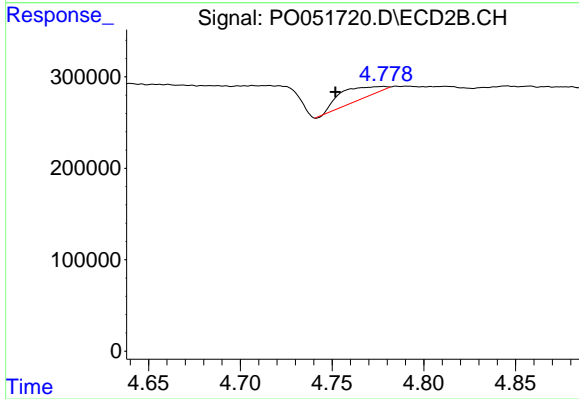
#7 AR-1016-5

R.T.: 4.778 min  
 Delta R.T.: 0.026 min  
 Response: 206860  
 Conc: 31.70 ng/ml



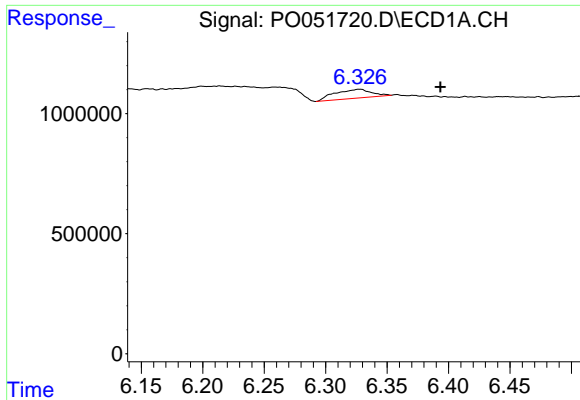
#15 AR-1232-5

R.T.: 0.000 min  
 Exp R.T. : 5.750 min  
 Response: 0  
 Conc: N.D.



#15 AR-1232-5

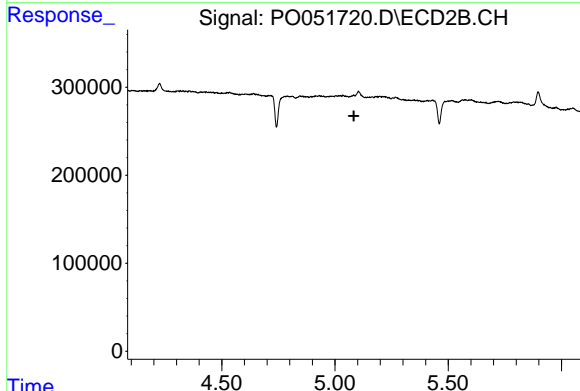
R.T.: 4.778 min  
 Delta R.T.: 0.026 min  
 Response: 206860  
 Conc: 81.72 ng/ml



#20 AR-1242-5

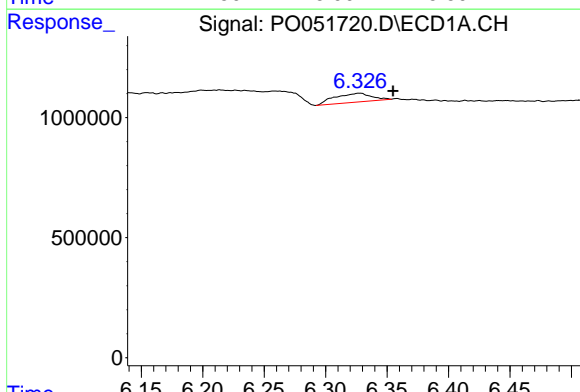
R.T.: 6.328 min  
 Delta R.T.: -0.065 min  
 Response: 775831  
 Conc: 58.05 ng/ml

Instrument :  
 ECD\_O  
 ClientSampleId :



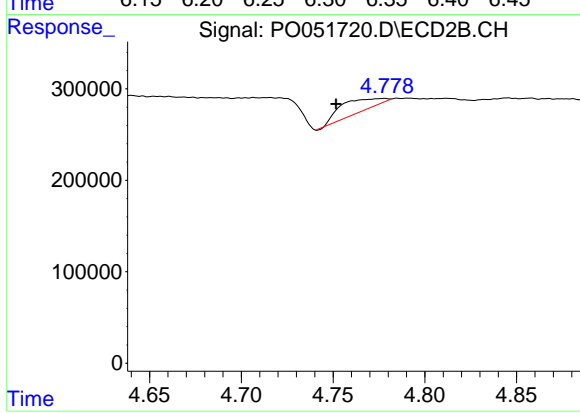
#20 AR-1242-5

R.T.: 0.000 min  
 Exp R.T. : 5.084 min  
 Response: 0  
 Conc: N.D.



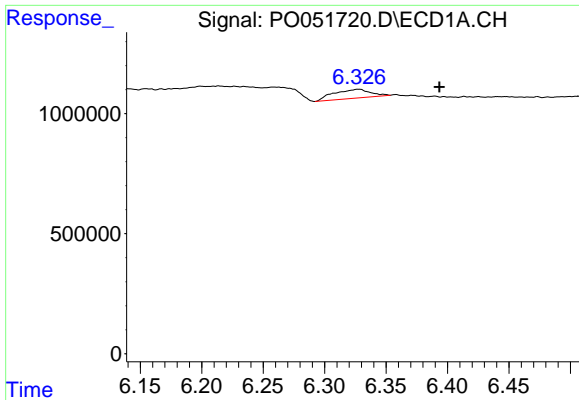
#24 AR-1248-4

R.T.: 6.328 min  
 Delta R.T.: -0.026 min  
 Response: 775831  
 Conc: 29.35 ng/ml



#24 AR-1248-4

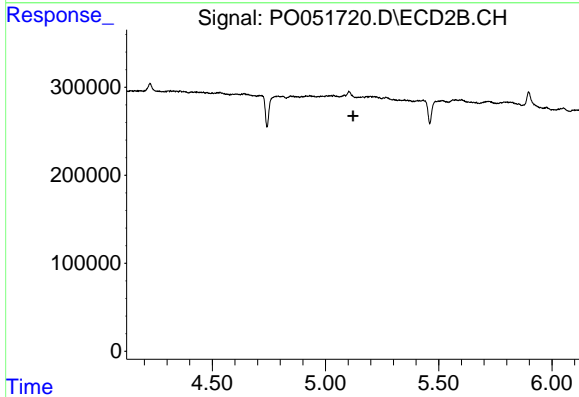
R.T.: 4.778 min  
 Delta R.T.: 0.027 min  
 Response: 206860  
 Conc: 21.32 ng/ml



#25 AR-1248-5

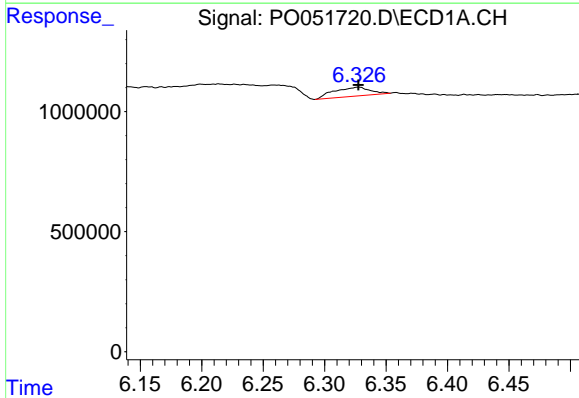
R.T.: 6.328 min  
 Delta R.T.: -0.065 min  
 Response: 775831  
 Conc: 30.94 ng/ml

Instrument :  
 ECD\_O  
 ClientSampleId :



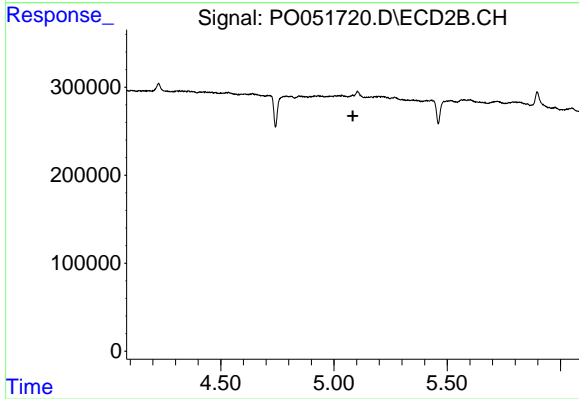
#25 AR-1248-5

R.T.: 0.000 min  
 Exp R.T. : 5.121 min  
 Response: 0  
 Conc: N.D.



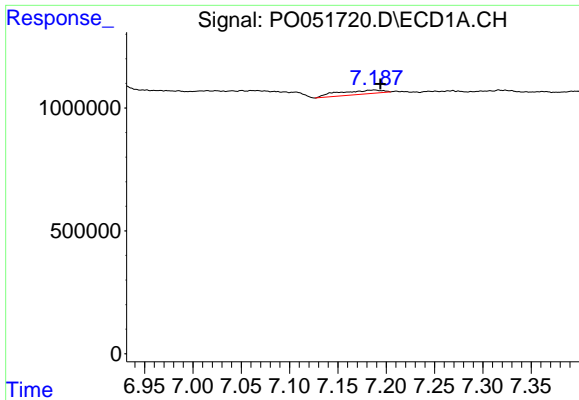
#26 AR-1254-1

R.T.: 6.328 min  
 Delta R.T.: 0.000 min  
 Response: 775831  
 Conc: 31.41 ng/ml



#26 AR-1254-1

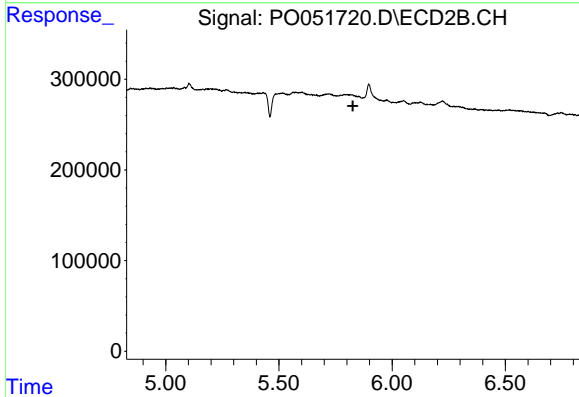
R.T.: 0.000 min  
 Exp R.T. : 5.083 min  
 Response: 0  
 Conc: N.D.



#29 AR-1254-4

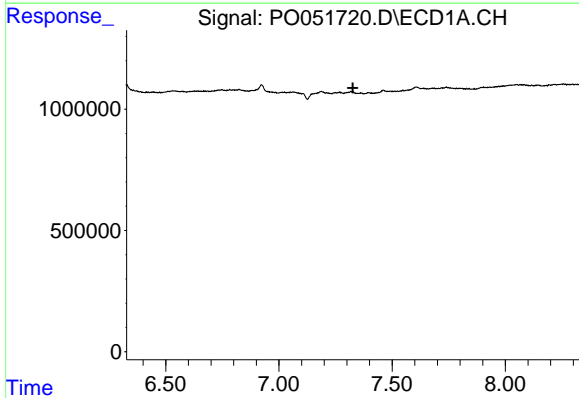
R.T.: 7.188 min  
 Delta R.T.: -0.006 min  
 Response: 518766  
 Conc: 16.63 ng/ml

Instrument :  
 ECD\_O  
 ClientSampleId :



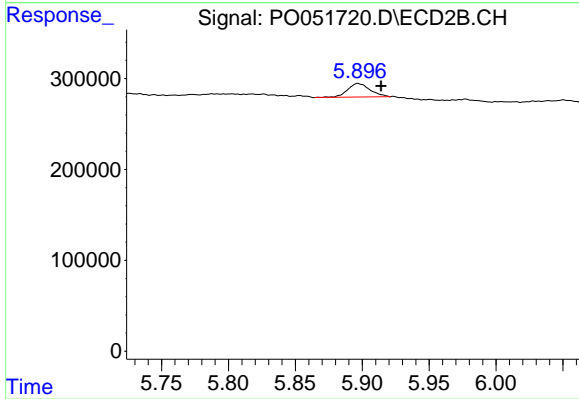
#29 AR-1254-4

R.T.: 0.000 min  
 Exp R.T. : 5.826 min  
 Response: 0  
 Conc: N.D.



#32 AR-1260-2

R.T.: 0.000 min  
 Exp R.T. : 7.327 min  
 Response: 0  
 Conc: N.D.



#32 AR-1260-2

R.T.: 5.897 min  
 Delta R.T.: -0.017 min  
 Response: 174244  
 Conc: 10.04 ng/ml