

Data Path : Z:\pestpcbsrv\HPCHEM1\ECD\_0\Data\PO112118\  
 Data File : PO051722.D  
 Signal(s) : Signal #1: ECD1A.CH Signal #2: ECD2B.CH  
 Acq On : 21 Nov 2018 17:41  
 Operator : SM/SJ  
 Sample : PB115006BL  
 Misc :  
 ALS Vial : 16 Sample Multiplier: 1

Instrument :  
 ECD\_0  
 ClientSampleId :

Integration File signal 1: autoint1.e  
 Integration File signal 2: autoint2.e  
 Quant Time: Nov 21 23:53:21 2018  
 Quant Method : Z:\pestpcbsrv\HPCHEM1\ECD\_0\methods\PO112018.M  
 Quant Title : GC EXTRACTABLES  
 QLast Update : Wed Nov 21 00:55:28 2018  
 Response via : Initial Calibration  
 Integrator: ChemStation 6890 Scale Mode: Small noise peaks clipped

Volume Inj. : 2 µl  
 Signal #1 Phase : ZB-MR2 Signal #2 Phase: ZB-MR2  
 Signal #1 Info : 30Mx0.32mmx 0.50µ Signal #2 Info : 30M x 0.32mm x 0.25µm

Compound	RT#1	RT#2	Resp#1	Resp#2	ng/ml	ng/ml
-----						
System Monitoring Compounds						
1) SA Tetrachlo...	4.306	3.312	18381757	6356016	24.418	26.554
2) SA Decachlor...	9.924	8.038	14626858	6234271	31.531	28.839
Target Compounds						
15) L3 AR-1232-5	5.734	0.000	800566	0	161.964	N.D. #
22) L5 AR-1248-2	5.734	0.000	800566	0	37.658	N.D. #
28) L6 AR-1254-3	6.916	0.000	432407	0	10.726	N.D. #
29) L6 AR-1254-4	0.000	5.892	0	243256	N.D.	21.327 #
30) L6 AR-1254-5	7.608	0.000	478607	0	15.543	N.D. #
32) L7 AR-1260-2	0.000	5.892	0	243256	N.D.	14.018 #
33) L7 AR-1260-3	7.692	0.000	557276	0	19.181	N.D. #
36) L8 AR-1262-1	7.692	0.000	557276	0	11.898	N.D. #
-----						

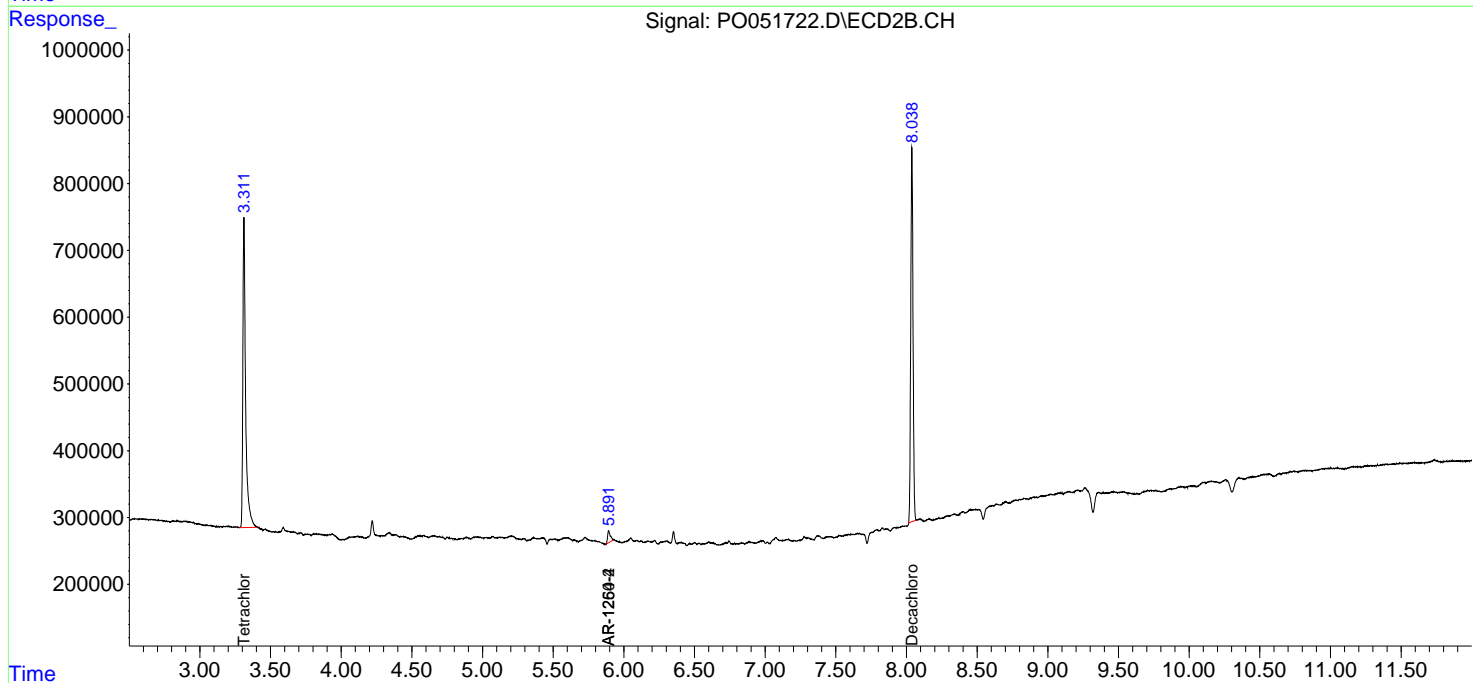
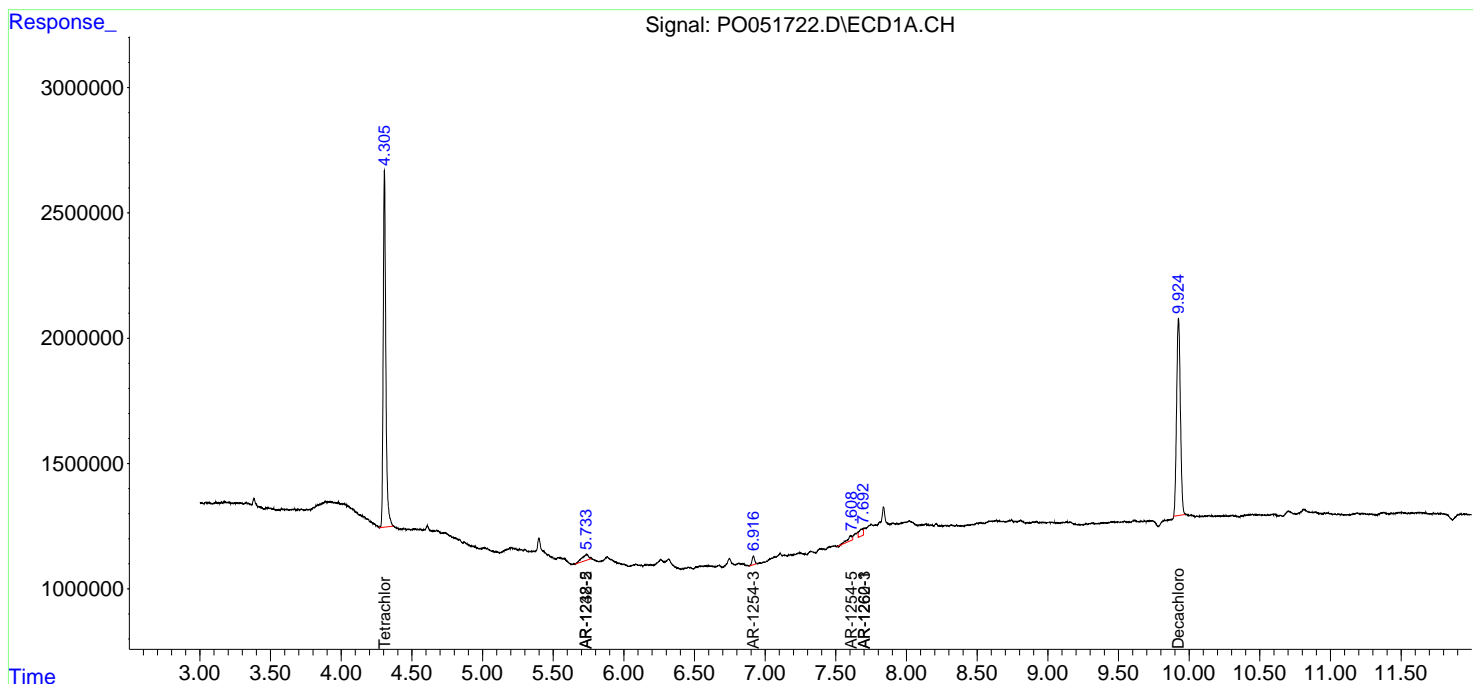
(f)=RT Delta > 1/2 Window (#)=Amounts differ by > 25% (m)=manual int.

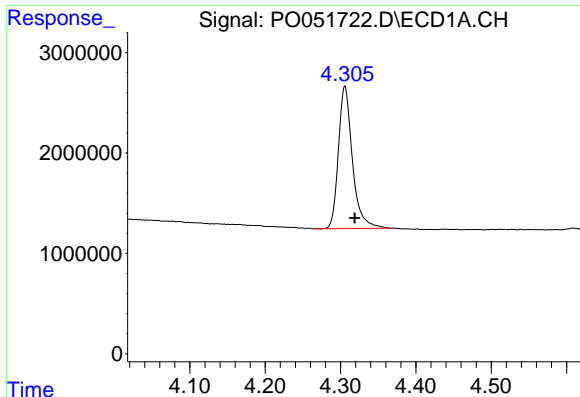
Data Path : Z:\pestpcbsrv\HPCHEM1\ECD\_O\Data\PO112118\  
 Data File : PO051722.D  
 Signal(s) : Signal #1: ECD1A.CH Signal #2: ECD2B.CH  
 Acq On : 21 Nov 2018 17:41  
 Operator : SM/SJ  
 Sample : PB115006BL  
 Misc :  
 ALS Vial : 16 Sample Multiplier: 1

Instrument :  
 ECD\_O  
 ClientSampled :

Integration File signal 1: autoint1.e  
 Integration File signal 2: autoint2.e  
 Quant Time: Nov 21 23:53:21 2018  
 Quant Method : Z:\pestpcbsrv\HPCHEM1\ECD\_O\methods\PO112018.M  
 Quant Title : GC EXTRACTABLES  
 QLast Update : Wed Nov 21 00:55:28 2018  
 Response via : Initial Calibration  
 Integrator: ChemStation 6890 Scale Mode: Small noise peaks clipped

Volume Inj. : 2 µl  
 Signal #1 Phase : ZB-MR1 Signal #2 Phase: ZB-MR2  
 Signal #1 Info : 30Mx0.32mmx 0.50µ Signal #2 Info : 30M x 0.32mm x 0.25µm

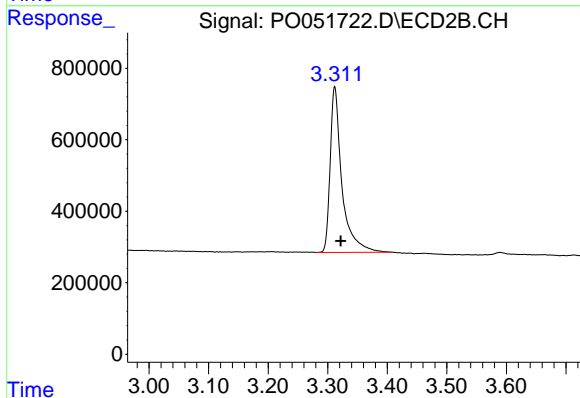




#1 Tetrachloro-m-xylene

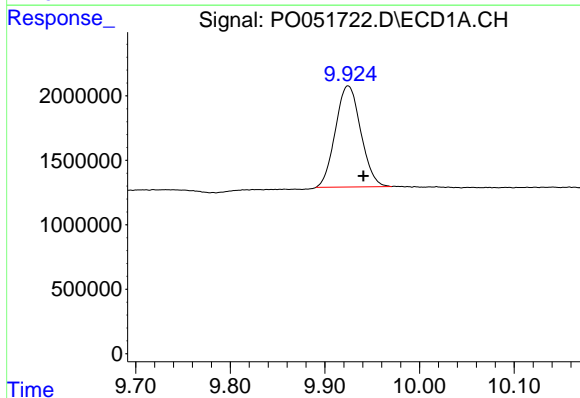
R.T.: 4.306 min  
 Delta R.T.: -0.013 min  
 Response: 18381757  
 Conc: 24.42 ng/ml

Instrument :  
 ECD\_O  
 ClientSampled :



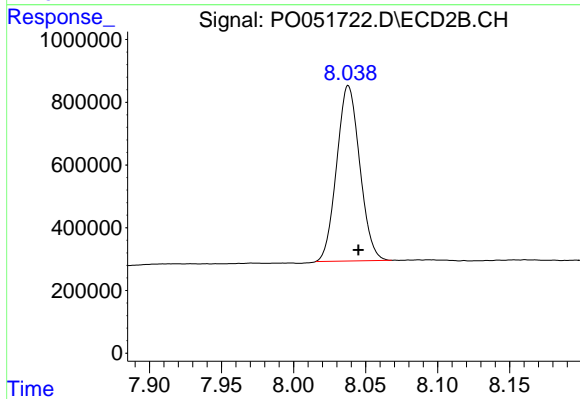
#1 Tetrachloro-m-xylene

R.T.: 3.312 min  
 Delta R.T.: -0.010 min  
 Response: 6356016  
 Conc: 26.55 ng/ml



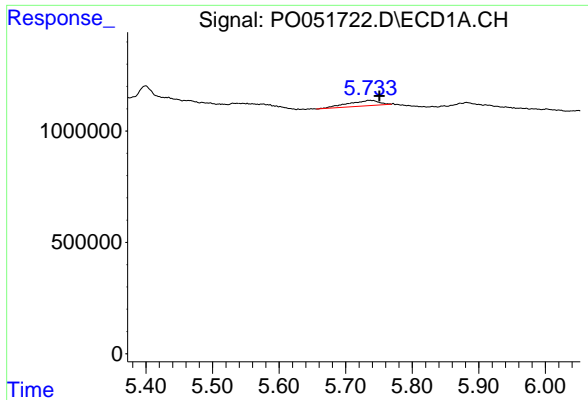
#2 Decachlorobiphenyl

R.T.: 9.924 min  
 Delta R.T.: -0.016 min  
 Response: 14626858  
 Conc: 31.53 ng/ml



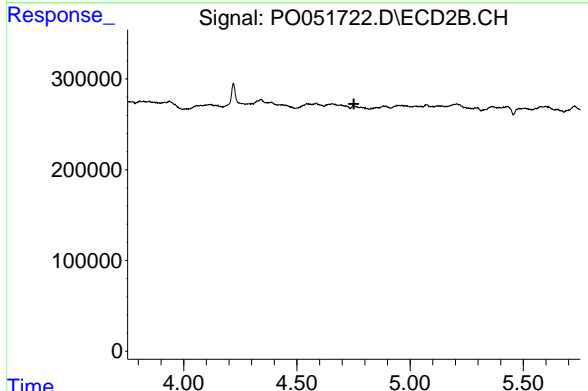
#2 Decachlorobiphenyl

R.T.: 8.038 min  
 Delta R.T.: -0.007 min  
 Response: 6234271  
 Conc: 28.84 ng/ml

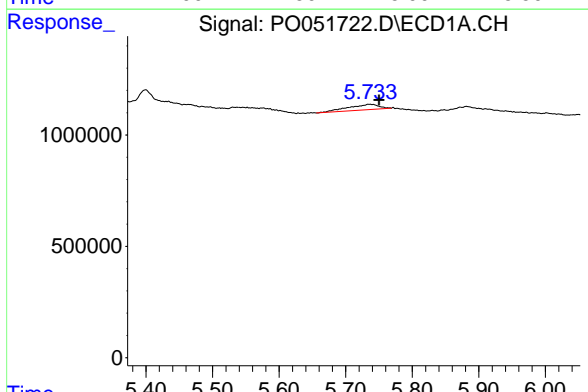


#15 AR-1232-5  
 R.T.: 5.734 min  
 Delta R.T.: -0.017 min  
 Response: 800566  
 Conc: 161.96 ng/ml

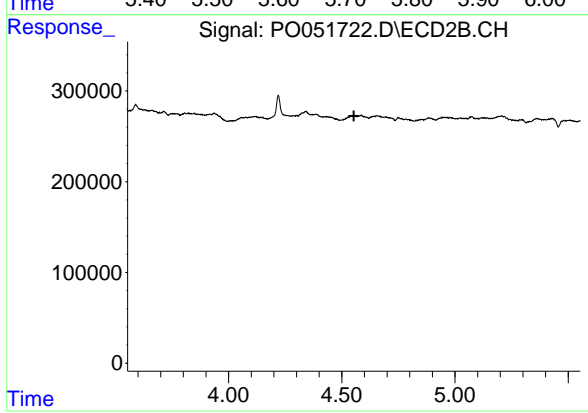
Instrument :  
 ECD\_O  
 ClientSampleId :



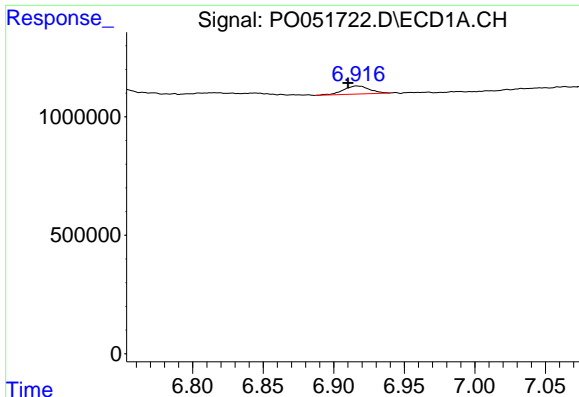
#15 AR-1232-5  
 R.T.: 0.000 min  
 Exp R.T. : 4.752 min  
 Response: 0  
 Conc: N.D.



#22 AR-1248-2  
 R.T.: 5.734 min  
 Delta R.T.: -0.017 min  
 Response: 800566  
 Conc: 37.66 ng/ml



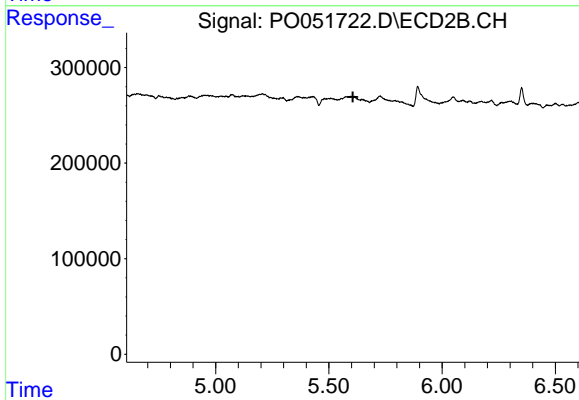
#22 AR-1248-2  
 R.T.: 0.000 min  
 Exp R.T. : 4.554 min  
 Response: 0  
 Conc: N.D.



#28 AR-1254-3

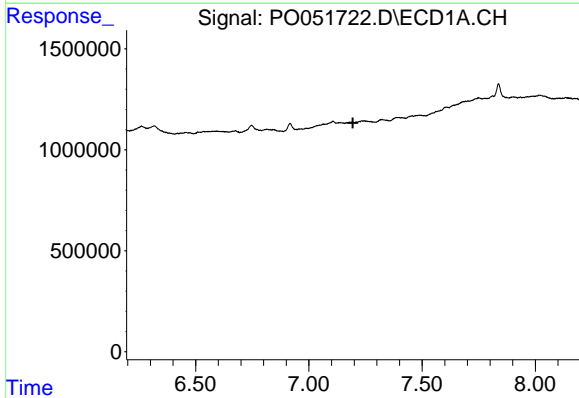
R.T.: 6.916 min  
 Delta R.T.: 0.006 min  
 Response: 432407  
 Conc: 10.73 ng/ml

Instrument :  
 ECD\_O  
 ClientSampled :



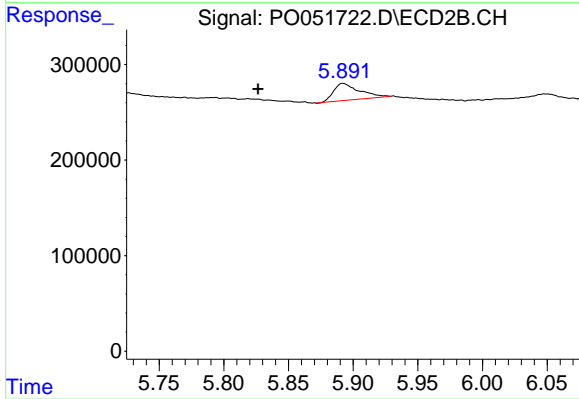
#28 AR-1254-3

R.T.: 0.000 min  
 Exp R.T. : 5.606 min  
 Response: 0  
 Conc: N.D.



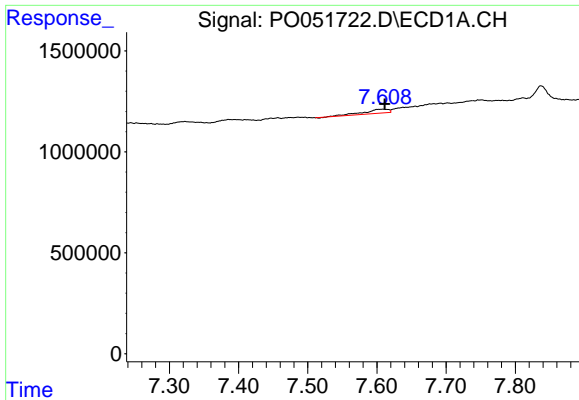
#29 AR-1254-4

R.T.: 0.000 min  
 Exp R.T. : 7.194 min  
 Response: 0  
 Conc: N.D.



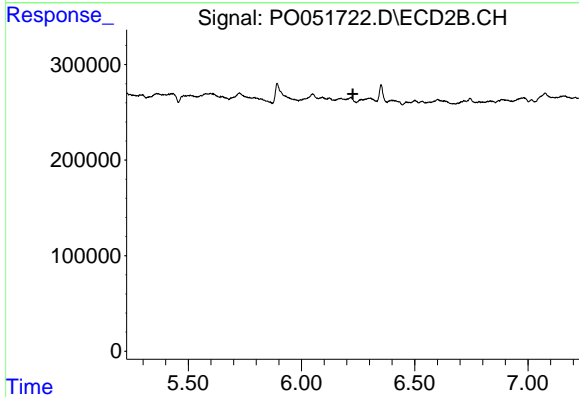
#29 AR-1254-4

R.T.: 5.892 min  
 Delta R.T.: 0.065 min  
 Response: 243256  
 Conc: 21.33 ng/ml

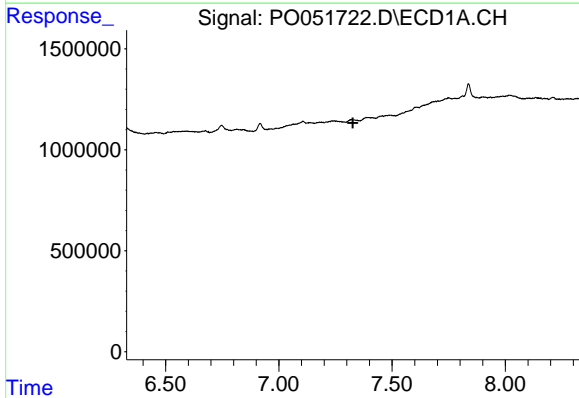


#30 AR-1254-5  
 R.T.: 7.608 min  
 Delta R.T.: -0.003 min  
 Response: 478607  
 Conc: 15.54 ng/ml

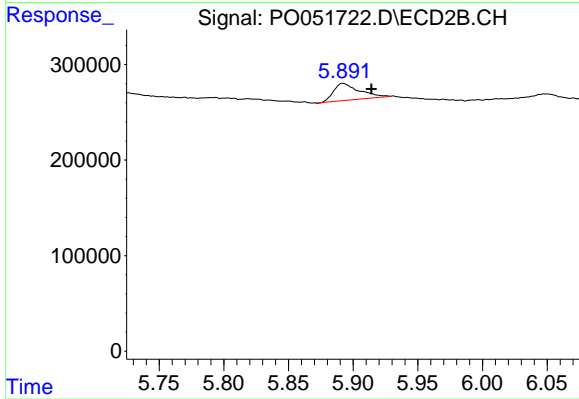
Instrument :  
 ECD\_O  
 ClientSampled :



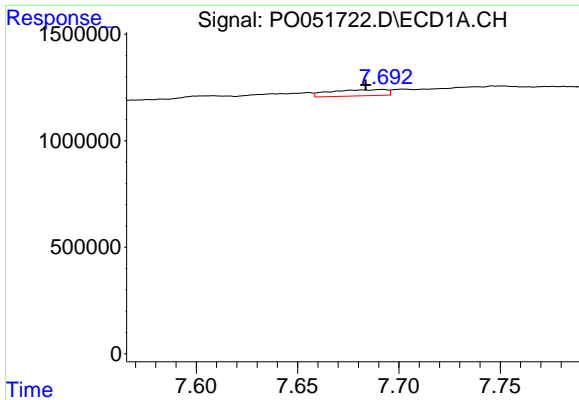
#30 AR-1254-5  
 R.T.: 0.000 min  
 Exp R.T. : 6.227 min  
 Response: 0  
 Conc: N.D.



#32 AR-1260-2  
 R.T.: 0.000 min  
 Exp R.T. : 7.327 min  
 Response: 0  
 Conc: N.D.

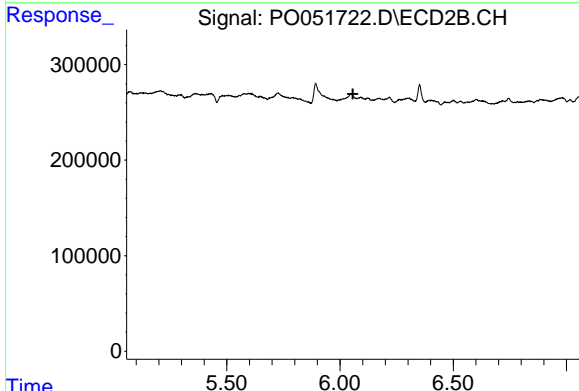


#32 AR-1260-2  
 R.T.: 5.892 min  
 Delta R.T.: -0.022 min  
 Response: 243256  
 Conc: 14.02 ng/ml

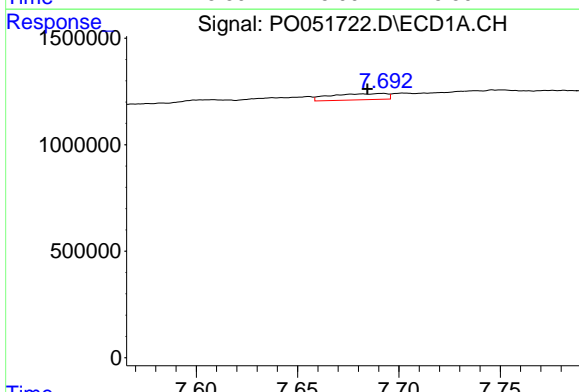


#33 AR-1260-3  
 R.T.: 7.692 min  
 Delta R.T.: 0.009 min  
 Response: 557276  
 Conc: 19.18 ng/ml

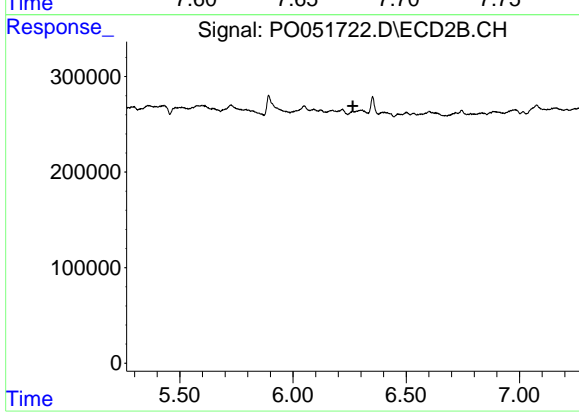
Instrument :  
 ECD\_O  
 ClientSampleId :



#33 AR-1260-3  
 R.T.: 0.000 min  
 Exp R.T. : 6.057 min  
 Response: 0  
 Conc: N.D.



#36 AR-1262-1  
 R.T.: 7.692 min  
 Delta R.T.: 0.008 min  
 Response: 557276  
 Conc: 11.90 ng/ml



#36 AR-1262-1  
 R.T.: 0.000 min  
 Exp R.T. : 6.265 min  
 Response: 0  
 Conc: N.D.