

Data Path : Z:\pestpcbsrv\HPCHEM1\ECD_0\Data\PO112118\
 Data File : PO051725.D
 Signal(s) : Signal #1: ECD1A.CH Signal #2: ECD2B.CH
 Acq On : 21 Nov 2018 18:31
 Operator : SM/SJ
 Sample : J6023-01
 Misc :
 ALS Vial : 19 Sample Multiplier: 1

Instrument :
 ECD_0
 ClientSampled :

Integration File signal 1: autoint1.e
 Integration File signal 2: autoint2.e
 Quant Time: Nov 21 23:54:53 2018
 Quant Method : Z:\pestpcbsrv\HPCHEM1\ECD_0\methods\PO112018.M
 Quant Title : GC EXTRACTABLES
 QLast Update : Wed Nov 21 00:55:28 2018
 Response via : Initial Calibration
 Integrator: ChemStation 6890 Scale Mode: Small noise peaks clipped

Volume Inj. : 2 µl
 Signal #1 Phase : ZB-MR1 Signal #2 Phase: ZB-MR2
 Signal #1 Info : 30Mx0.32mmx 0.50µ Signal #2 Info : 30M x 0.32mm x 0.25µm

Compound	RT#1	RT#2	Resp#1	Resp#2	ng/ml	ng/ml
System Monitoring Compounds						
1) SA Tetrachlo...	4.310	3.312	19458286	6222692	25.848	25.997
2) SA Decachlor...	9.930	8.040	17112909	7525142	36.890	34.811
Target Compounds						
3) L1 AR-1016-1	0.000	4.367	0	97836	N.D.	13.193 #
4) L1 AR-1016-2	5.568	4.367	435865	97836	12.898	7.999 #
5) L1 AR-1016-3	5.568	4.494	435865	228454	21.838	37.418 #
6) L1 AR-1016-4	5.635	4.578	1374150	221267	82.744	41.699 #
7) L1 AR-1016-5	0.000	4.685	0	134056	N.D.	20.541 #
8) L2 AR-1221-1	4.479	3.484	610869	383654	85.919	170.590 #
9) L2 AR-1221-2	4.591	3.584	4845576	404256	924.796	233.149 #
10) L2 AR-1221-3	4.699	3.684	4367038	1518540	264.916	276.331
11) L3 AR-1232-1	4.699	3.684	4367038	1518540	328.845	327.952
12) L3 AR-1232-2	5.281	4.367	412476	97836	56.786	18.268 #
13) L3 AR-1232-3	5.568	4.494	435865	228454	30.444	87.400 #
14) L3 AR-1232-4	5.635	4.578	1374150	221267	193.008	100.391 #
15) L3 AR-1232-5	5.741	4.685	1255046	134056	253.911	52.959 #
16) L4 AR-1242-1	0.000	4.367	0	97836	N.D.	16.487 #
17) L4 AR-1242-2	5.568	4.367	435865	97836	16.027	9.802 #
18) L4 AR-1242-3	5.568	4.494	435865	228454	27.293	46.058 #
19) L4 AR-1242-4	5.635	4.578	1374150	221267	104.063	46.695 #
20) L4 AR-1242-5	6.371	5.077	711051	169563	53.199	28.130 #
21) L5 AR-1248-1	0.000	4.367	0	97836	N.D.	18.162 #
22) L5 AR-1248-2	5.741	4.578	1255046	221267	59.036	28.042 #
23) L5 AR-1248-3	0.000	4.578	0	221267	N.D.	28.224 #
24) L5 AR-1248-4	6.371	4.685	711051	134056	26.903	13.818 #
25) L5 AR-1248-5	6.371	5.116	711051	327889	28.355	34.729
26) L6 AR-1254-1	6.291	5.077	1422219	169563	57.585	12.334 #
27) L6 AR-1254-2	6.565	5.256	1587206	211965	40.754	17.760 #
28) L6 AR-1254-3	6.920	0.000	952085	0	23.618	N.D. #
29) L6 AR-1254-4	7.211	5.891	567893	170576	18.207	14.955
30) L6 AR-1254-5	7.567	0.000	265764	0	8.631	N.D. #
31) L7 AR-1260-1	0.000	5.705	0	26596	N.D.	1.960 #
32) L7 AR-1260-2	7.390	5.891	739330	170576	17.513	9.830 #
33) L7 AR-1260-3	7.713	6.055	284767	185089	9.802	12.083
36) L8 AR-1262-1	7.713	0.000	284767	0	6.080	N.D. #
38) L8 AR-1262-3	0.000	7.017	0	18455	N.D.	1.479 #
39) L8 AR-1262-4	0.000	7.055	0	95255	N.D.	4.364 #
41) L9 AR-1268-1	0.000	7.017	0	18455	N.D.	0.467 #
42) L9 AR-1268-2	0.000	7.055	0	95255	N.D.	2.581 #
45) L9 AR-1268-5	0.000	7.827	0	74786	N.D.	0.872 #

Data Path : Z:\pestpcbsrv\HPCHEM1\ECD_0\Data\PO112118\
Data File : PO051725.D
Signal(s) : Signal #1: ECD1A.CH Signal #2: ECD2B.CH
Acq On : 21 Nov 2018 18:31
Operator : SM/SJ
Sample : J6023-01
Misc :
ALS Vial : 19 Sample Multiplier: 1

Instrument :
ECD_O
ClientSampleId :

Integration File signal 1: autoint1.e
Integration File signal 2: autoint2.e
Quant Time: Nov 21 23:54:53 2018
Quant Method : Z:\pestpcbsrv\HPCHEM1\ECD_0\methods\PO112018.M
Quant Title : GC EXTRACTABLES
QLast Update : Wed Nov 21 00:55:28 2018
Response via : Initial Calibration
Integrator: ChemStation 6890 Scale Mode: Small noise peaks clipped

Volume Inj. : 2 µl
Signal #1 Phase : ZB-MR1 Signal #2 Phase: ZB-MR2
Signal #1 Info : 30Mx0.32mmx 0.50µ Signal #2 Info : 30M x 0.32mm x 0.25µm

Compound	RT#1	RT#2	Resp#1	Resp#2	ng/ml	ng/ml
----------	------	------	--------	--------	-------	-------

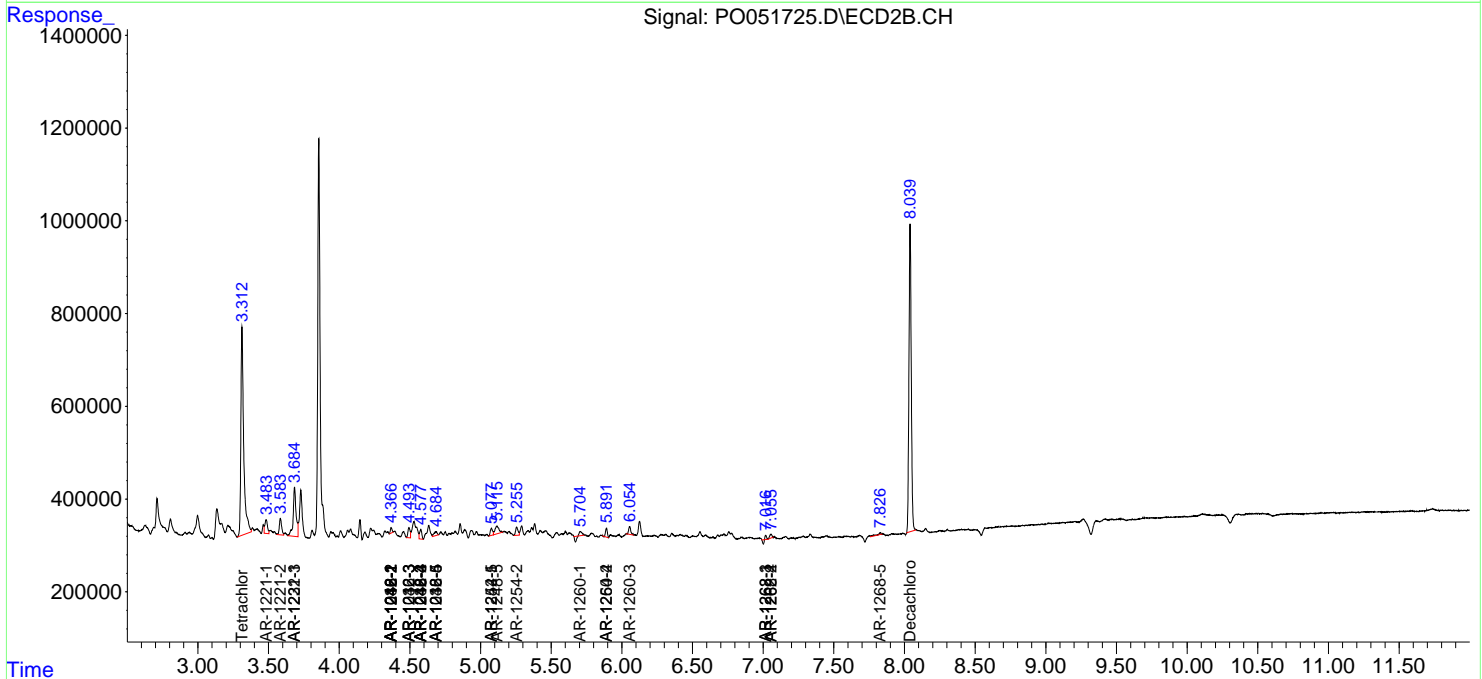
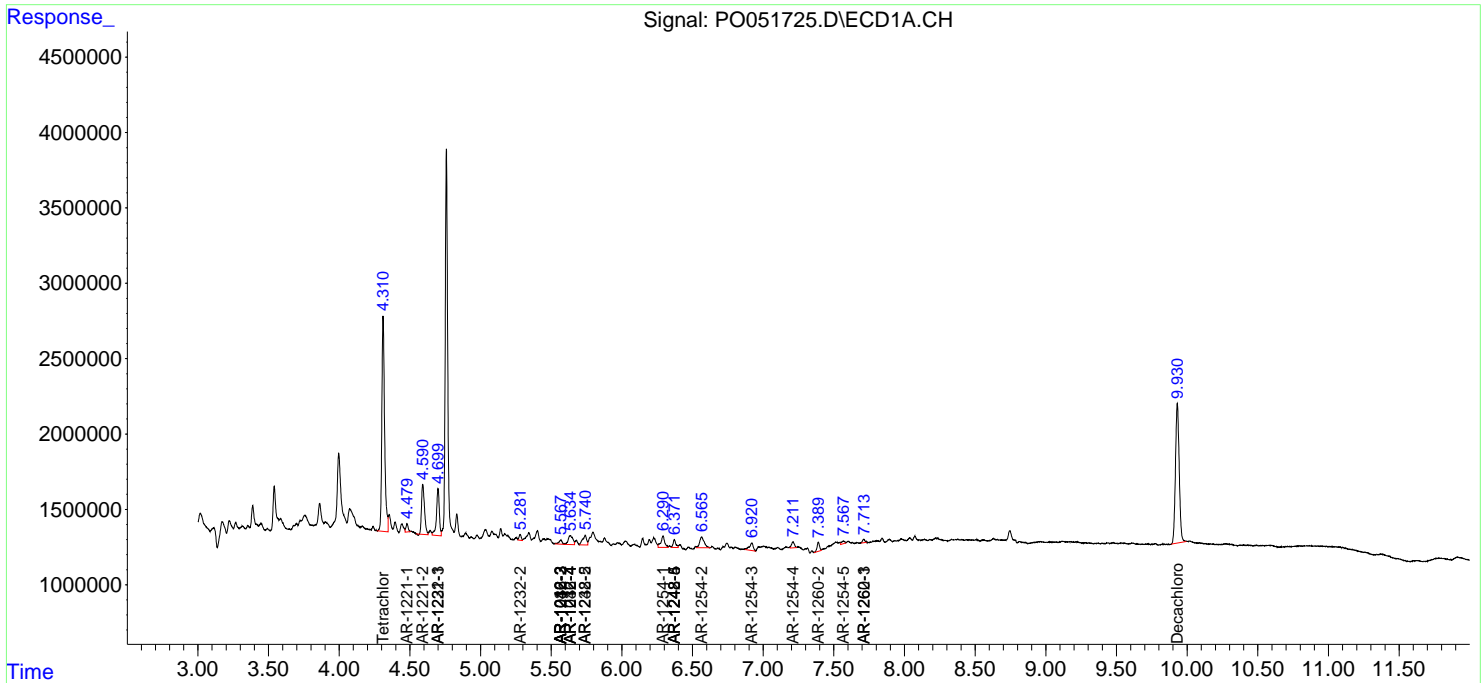
(f)=RT Delta > 1/2 Window (#)=Amounts differ by > 25% (m)=manual int.

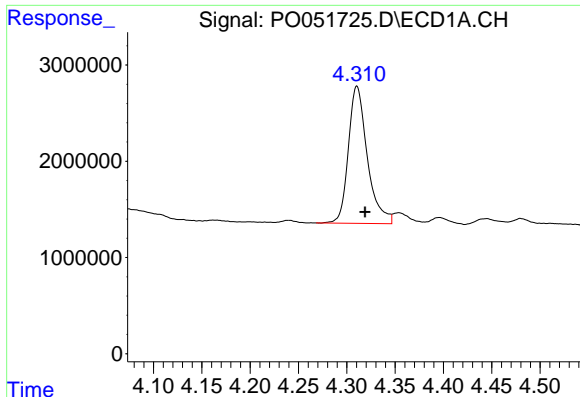
Data Path : Z:\pestpcbsrv\HPCHEM1\ECD_O\Data\PO112118\
 Data File : PO051725.D
 Signal(s) : Signal #1: ECD1A.CH Signal #2: ECD2B.CH
 Acq On : 21 Nov 2018 18:31
 Operator : SM/SJ
 Sample : J6023-01
 Misc :
 ALS Vial : 19 Sample Multiplier: 1

Instrument :
 ECD_O
 ClientSampled :

Integration File signal 1: autoint1.e
 Integration File signal 2: autoint2.e
 Quant Time: Nov 21 23:54:53 2018
 Quant Method : Z:\pestpcbsrv\HPCHEM1\ECD_O\methods\PO112018.M
 Quant Title : GC EXTRACTABLES
 QLast Update : Wed Nov 21 00:55:28 2018
 Response via : Initial Calibration
 Integrator: ChemStation 6890 Scale Mode: Small noise peaks clipped

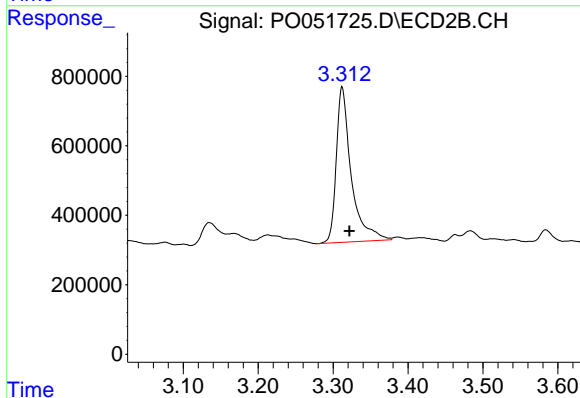
Volume Inj. : 2 µl
 Signal #1 Phase : ZB-MR1 Signal #2 Phase: ZB-MR2
 Signal #1 Info : 30Mx0.32mmx 0.50µ Signal #2 Info : 30M x 0.32mm x 0.25µm



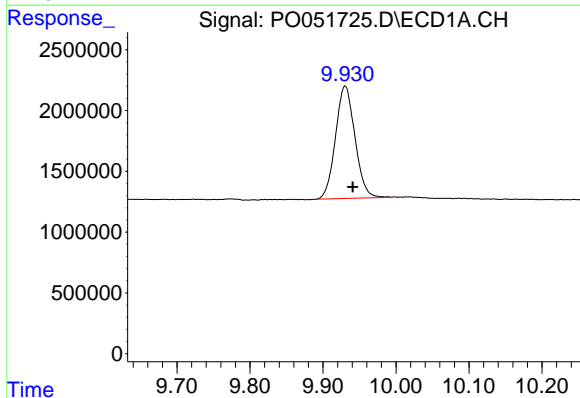


#1 Tetrachloro-m-xylene
 R.T.: 4.310 min
 Delta R.T.: -0.009 min
 Response: 19458286
 Conc: 25.85 ng/ml

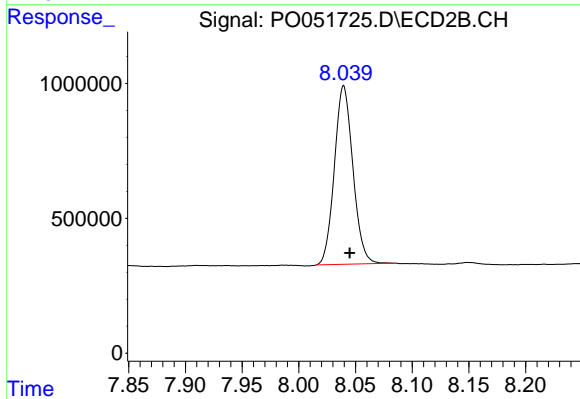
Instrument :
 ECD_O
 ClientSampleId :



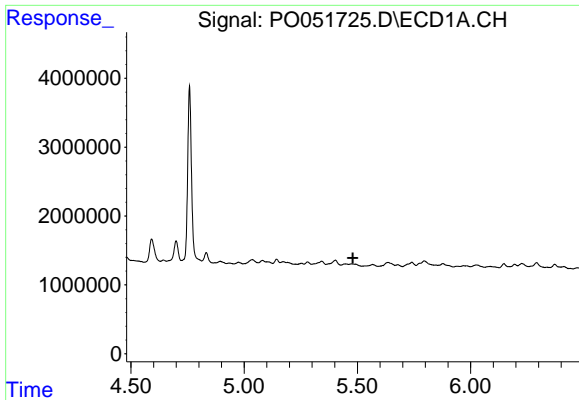
#1 Tetrachloro-m-xylene
 R.T.: 3.312 min
 Delta R.T.: -0.010 min
 Response: 6222692
 Conc: 26.00 ng/ml



#2 Decachlorobiphenyl
 R.T.: 9.930 min
 Delta R.T.: -0.010 min
 Response: 17112909
 Conc: 36.89 ng/ml



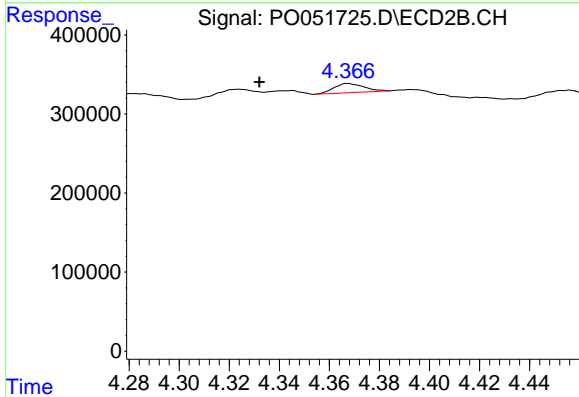
#2 Decachlorobiphenyl
 R.T.: 8.040 min
 Delta R.T.: -0.005 min
 Response: 7525142
 Conc: 34.81 ng/ml



#3 AR-1016-1

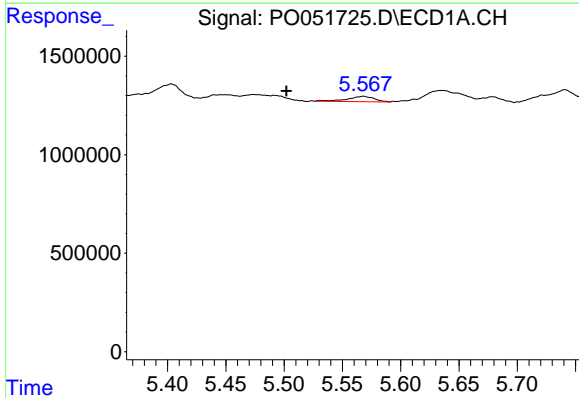
R.T.: 0.000 min
 Exp R.T.: 5.480 min
 Response: 0
 Conc: N.D.

Instrument :
 ECD_O
 ClientSampleId :



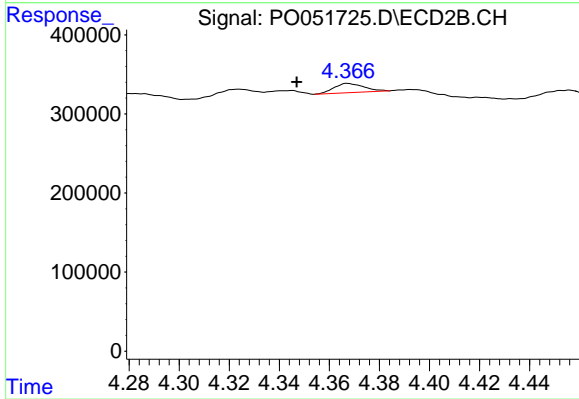
#3 AR-1016-1

R.T.: 4.367 min
 Delta R.T.: 0.035 min
 Response: 97836
 Conc: 13.19 ng/ml



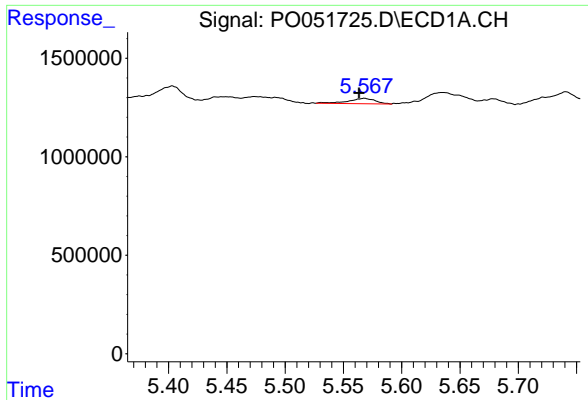
#4 AR-1016-2

R.T.: 5.568 min
 Delta R.T.: 0.066 min
 Response: 435865
 Conc: 12.90 ng/ml



#4 AR-1016-2

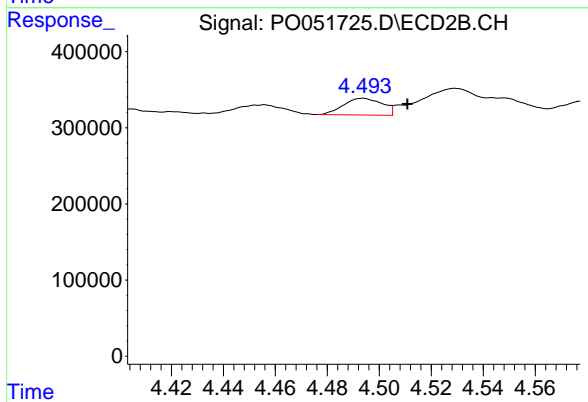
R.T.: 4.367 min
 Delta R.T.: 0.020 min
 Response: 97836
 Conc: 8.00 ng/ml



#5 AR-1016-3

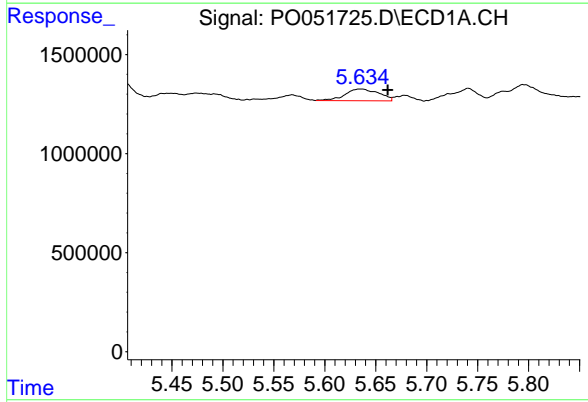
R.T.: 5.568 min
 Delta R.T.: 0.005 min
 Response: 435865
 Conc: 21.84 ng/ml

Instrument :
 ECD_O
 ClientSampleId :



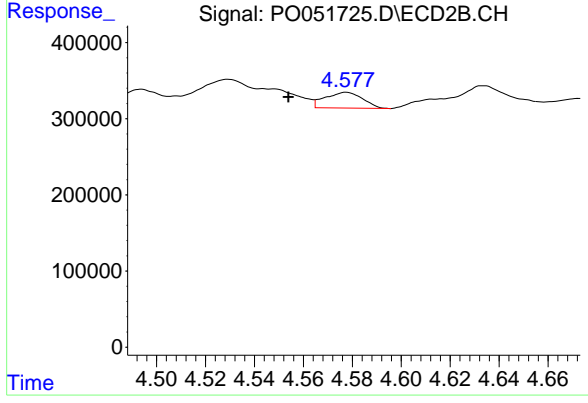
#5 AR-1016-3

R.T.: 4.494 min
 Delta R.T.: -0.017 min
 Response: 228454
 Conc: 37.42 ng/ml



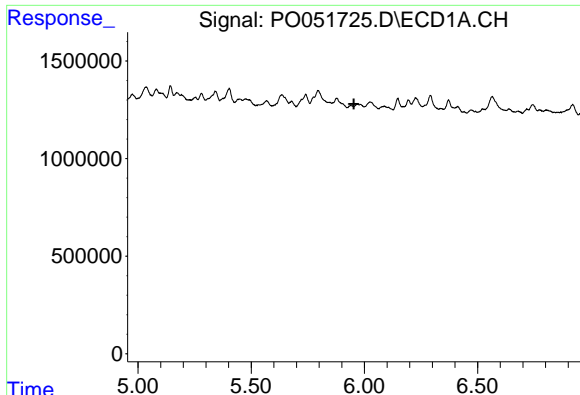
#6 AR-1016-4

R.T.: 5.635 min
 Delta R.T.: -0.026 min
 Response: 1374150
 Conc: 82.74 ng/ml



#6 AR-1016-4

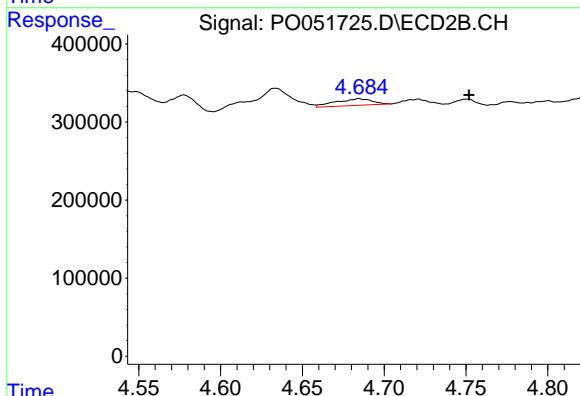
R.T.: 4.578 min
 Delta R.T.: 0.024 min
 Response: 221267
 Conc: 41.70 ng/ml



#7 AR-1016-5

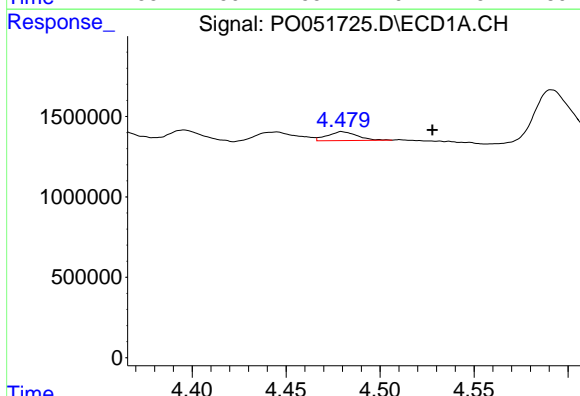
R.T.: 0.000 min
 Exp R.T.: 5.953 min
 Response: 0
 Conc: N.D.

Instrument :
 ECD_O
 ClientSampled :



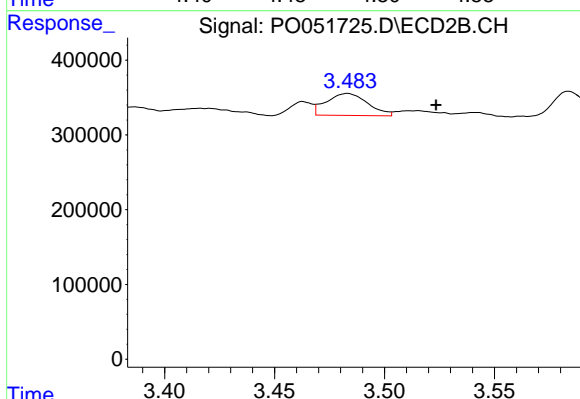
#7 AR-1016-5

R.T.: 4.685 min
 Delta R.T.: -0.067 min
 Response: 134056
 Conc: 20.54 ng/ml



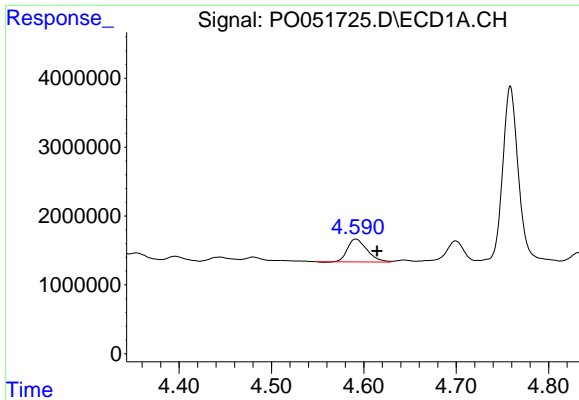
#8 AR-1221-1

R.T.: 4.479 min
 Delta R.T.: -0.048 min
 Response: 610869
 Conc: 85.92 ng/ml



#8 AR-1221-1

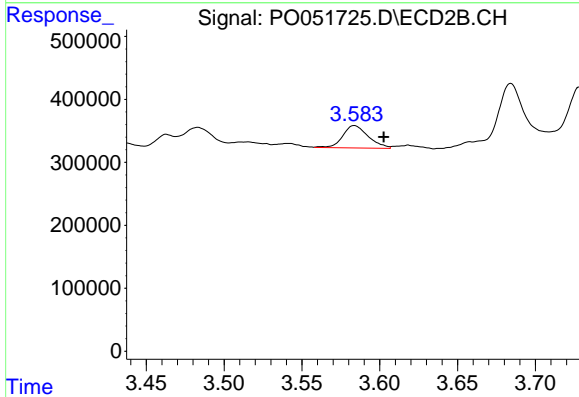
R.T.: 3.484 min
 Delta R.T.: -0.040 min
 Response: 383654
 Conc: 170.59 ng/ml



#9 AR-1221-2

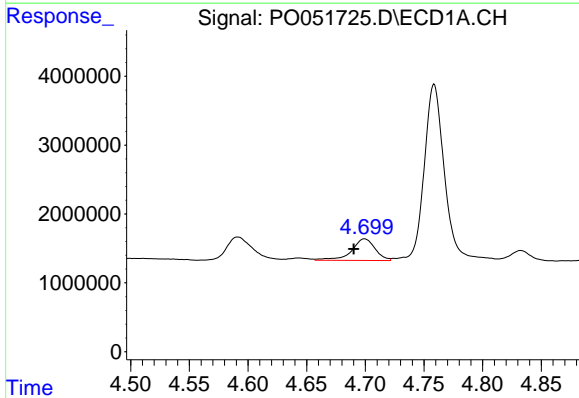
R.T.: 4.591 min
 Delta R.T.: -0.023 min
 Response: 4845576
 Conc: 924.80 ng/ml

Instrument :
 ECD_O
 ClientSampleId :



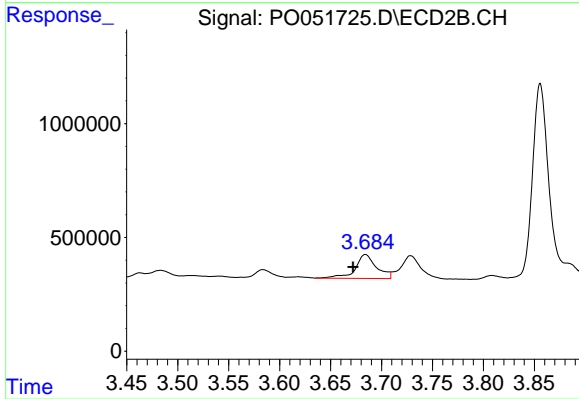
#9 AR-1221-2

R.T.: 3.584 min
 Delta R.T.: -0.019 min
 Response: 404256
 Conc: 233.15 ng/ml



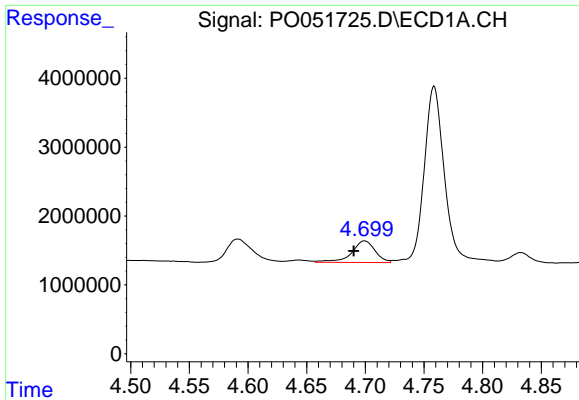
#10 AR-1221-3

R.T.: 4.699 min
 Delta R.T.: 0.009 min
 Response: 4367038
 Conc: 264.92 ng/ml



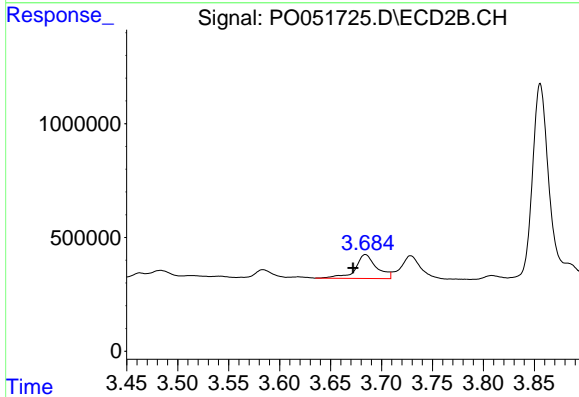
#10 AR-1221-3

R.T.: 3.684 min
 Delta R.T.: 0.012 min
 Response: 1518540
 Conc: 276.33 ng/ml

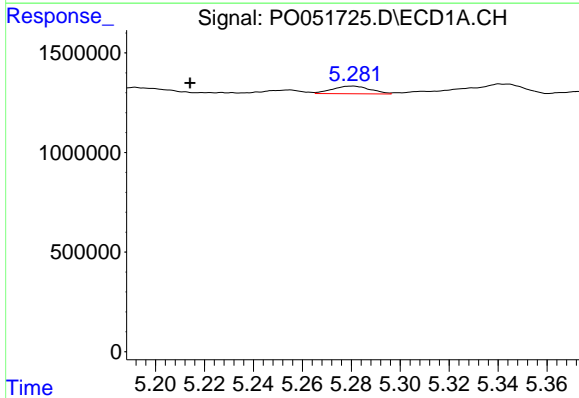


#11 AR-1232-1
 R.T.: 4.699 min
 Delta R.T.: 0.009 min
 Response: 4367038
 Conc: 328.85 ng/ml

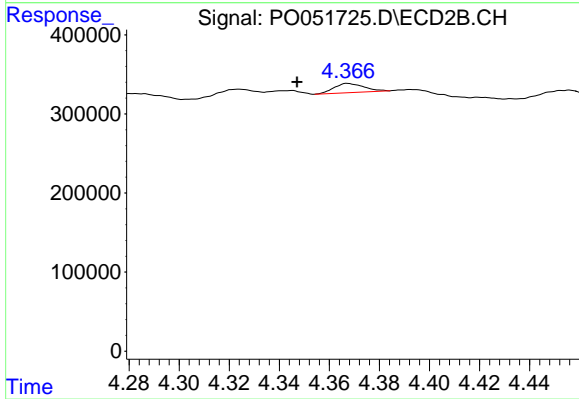
Instrument :
 ECD_O
 ClientSampled :



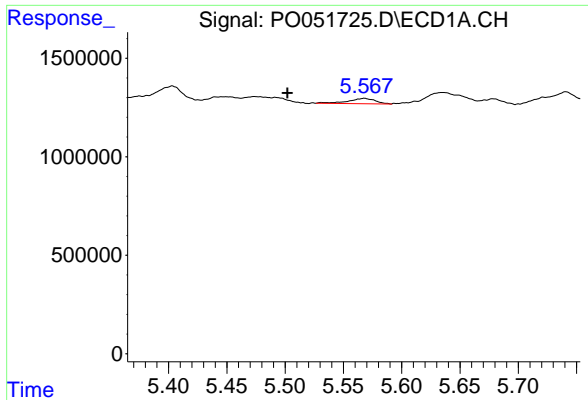
#11 AR-1232-1
 R.T.: 3.684 min
 Delta R.T.: 0.012 min
 Response: 1518540
 Conc: 327.95 ng/ml



#12 AR-1232-2
 R.T.: 5.281 min
 Delta R.T.: 0.067 min
 Response: 412476
 Conc: 56.79 ng/ml

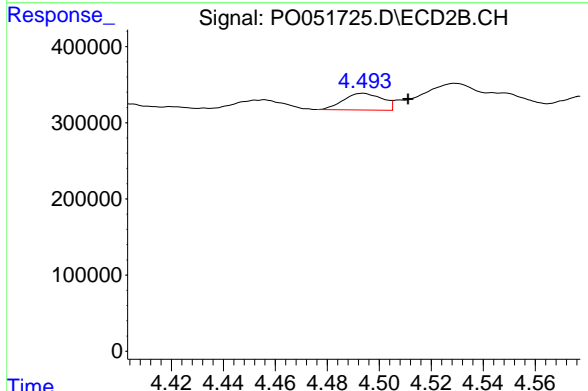


#12 AR-1232-2
 R.T.: 4.367 min
 Delta R.T.: 0.020 min
 Response: 97836
 Conc: 18.27 ng/ml

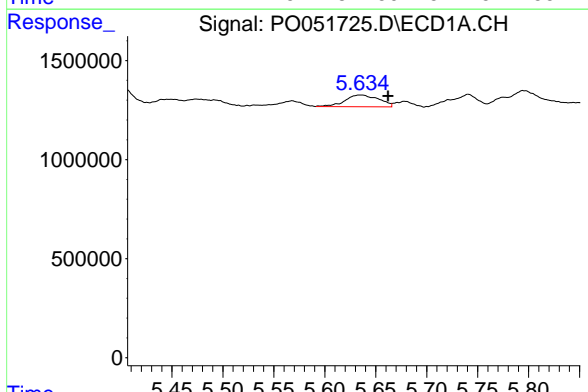


#13 AR-1232-3
 R.T.: 5.568 min
 Delta R.T.: 0.066 min
 Response: 435865
 Conc: 30.44 ng/ml

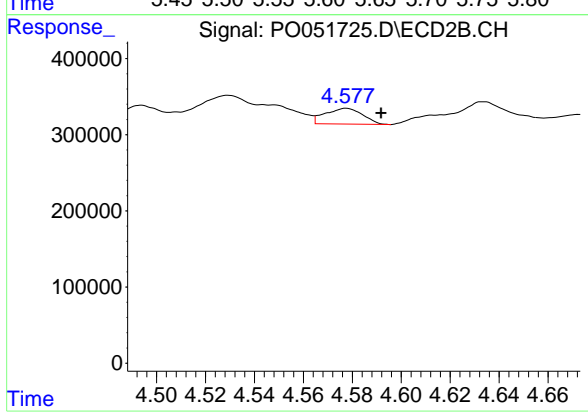
Instrument :
 ECD_O
 ClientSampleId :



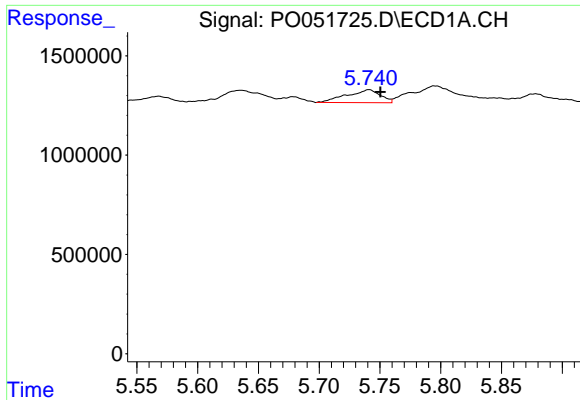
#13 AR-1232-3
 R.T.: 4.494 min
 Delta R.T.: -0.017 min
 Response: 228454
 Conc: 87.40 ng/ml



#14 AR-1232-4
 R.T.: 5.635 min
 Delta R.T.: -0.027 min
 Response: 1374150
 Conc: 193.01 ng/ml

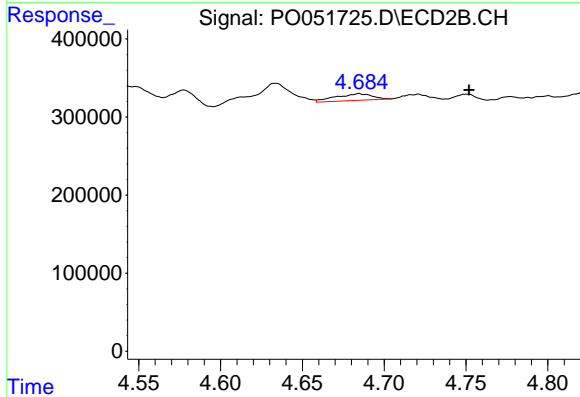


#14 AR-1232-4
 R.T.: 4.578 min
 Delta R.T.: -0.014 min
 Response: 221267
 Conc: 100.39 ng/ml

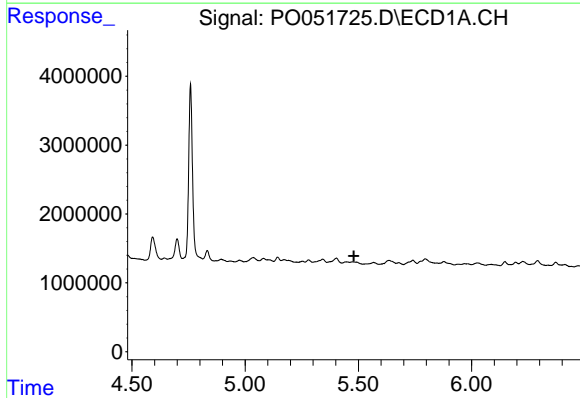


#15 AR-1232-5
 R.T.: 5.741 min
 Delta R.T.: -0.009 min
 Response: 1255046
 Conc: 253.91 ng/ml

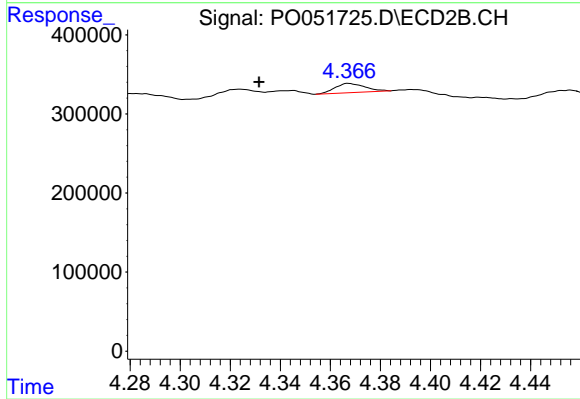
Instrument :
 ECD_O
 ClientSampled :



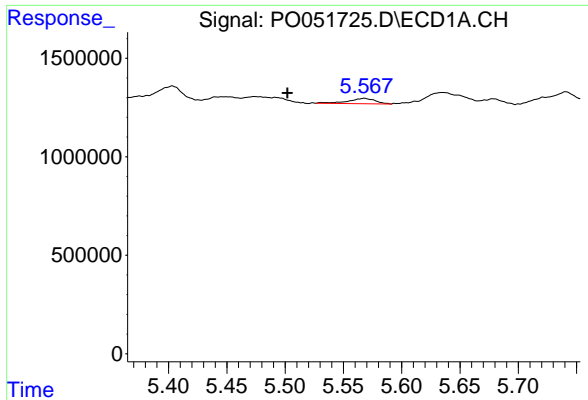
#15 AR-1232-5
 R.T.: 4.685 min
 Delta R.T.: -0.067 min
 Response: 134056
 Conc: 52.96 ng/ml



#16 AR-1242-1
 R.T.: 0.000 min
 Exp R.T. : 5.480 min
 Response: 0
 Conc: N.D.

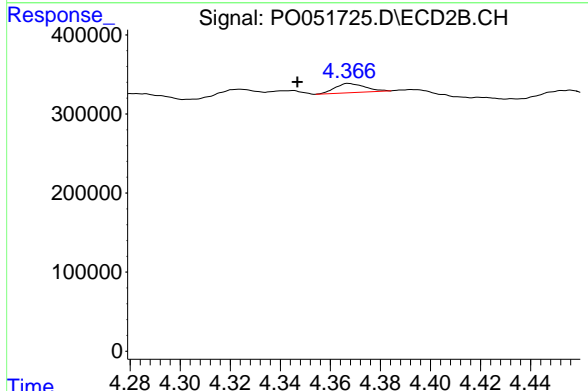


#16 AR-1242-1
 R.T.: 4.367 min
 Delta R.T.: 0.036 min
 Response: 97836
 Conc: 16.49 ng/ml

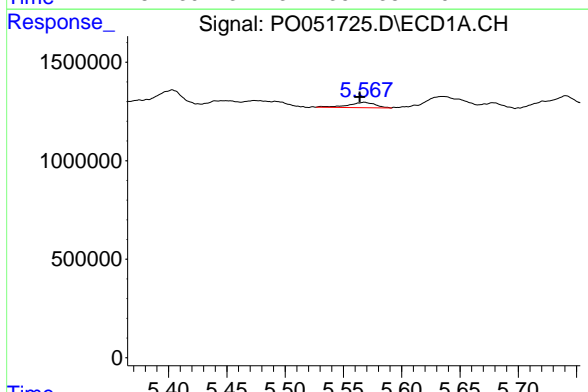


#17 AR-1242-2
 R.T.: 5.568 min
 Delta R.T.: 0.066 min
 Response: 435865
 Conc: 16.03 ng/ml

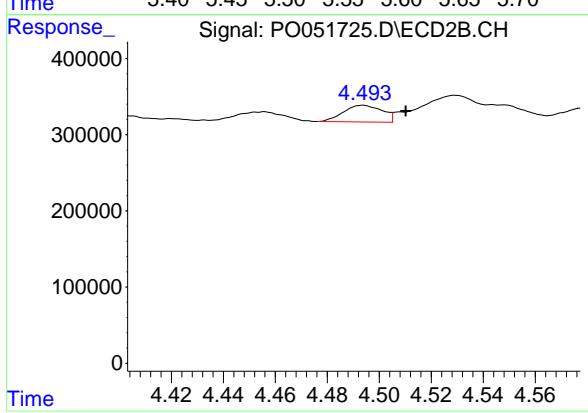
Instrument :
 ECD_O
 ClientSampleId :



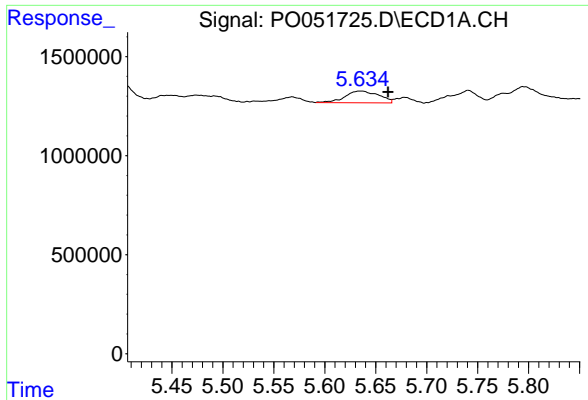
#17 AR-1242-2
 R.T.: 4.367 min
 Delta R.T.: 0.020 min
 Response: 97836
 Conc: 9.80 ng/ml



#18 AR-1242-3
 R.T.: 5.568 min
 Delta R.T.: 0.004 min
 Response: 435865
 Conc: 27.29 ng/ml

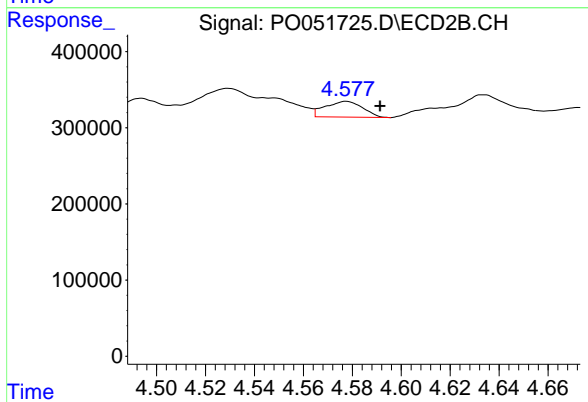


#18 AR-1242-3
 R.T.: 4.494 min
 Delta R.T.: -0.016 min
 Response: 228454
 Conc: 46.06 ng/ml

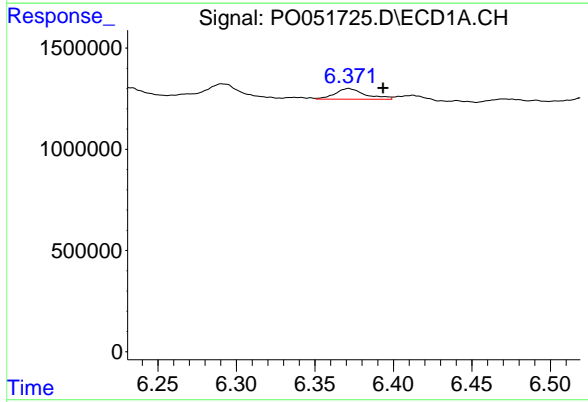


#19 AR-1242-4
 R.T.: 5.635 min
 Delta R.T.: -0.027 min
 Response: 1374150
 Conc: 104.06 ng/ml

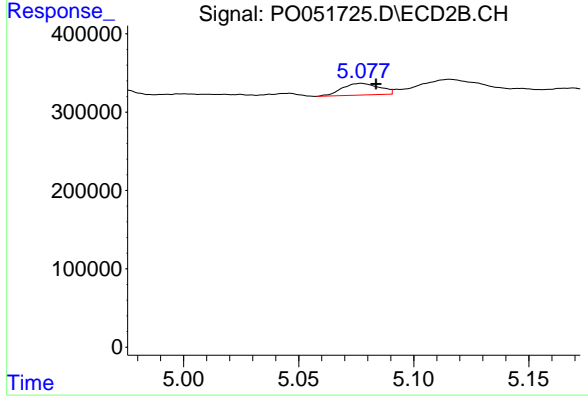
Instrument :
 ECD_O
 ClientSampleId :



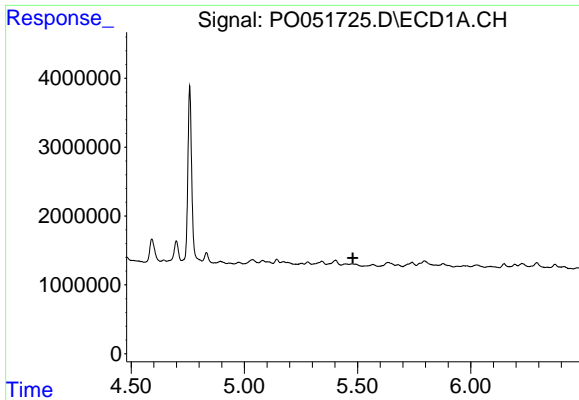
#19 AR-1242-4
 R.T.: 4.578 min
 Delta R.T.: -0.014 min
 Response: 221267
 Conc: 46.69 ng/ml



#20 AR-1242-5
 R.T.: 6.371 min
 Delta R.T.: -0.022 min
 Response: 711051
 Conc: 53.20 ng/ml



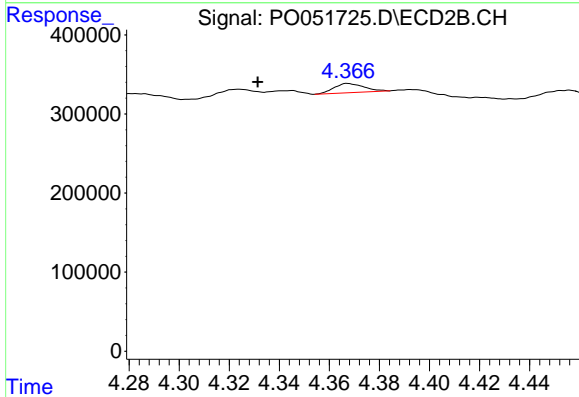
#20 AR-1242-5
 R.T.: 5.077 min
 Delta R.T.: -0.006 min
 Response: 169563
 Conc: 28.13 ng/ml



#21 AR-1248-1

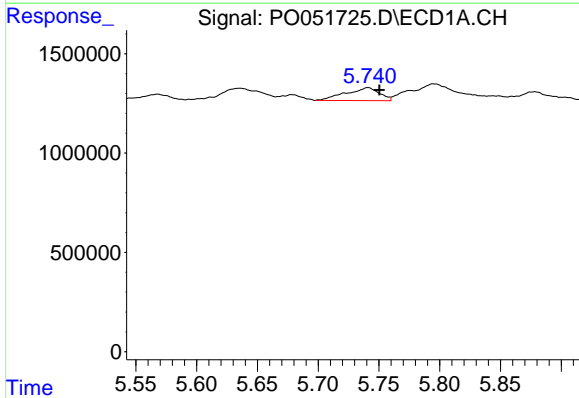
R.T.: 0.000 min
 Exp R.T.: 5.480 min
 Response: 0
 Conc: N.D.

Instrument :
 ECD_O
 ClientSampled :



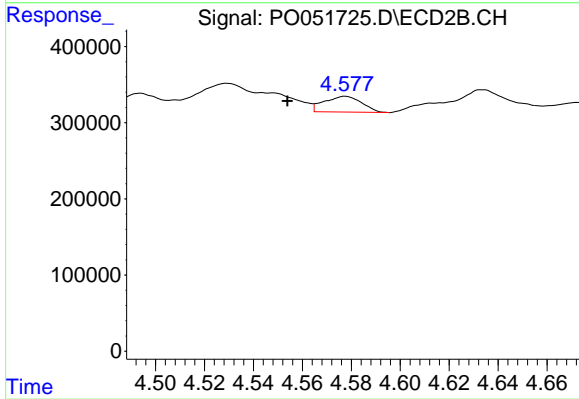
#21 AR-1248-1

R.T.: 4.367 min
 Delta R.T.: 0.036 min
 Response: 97836
 Conc: 18.16 ng/ml



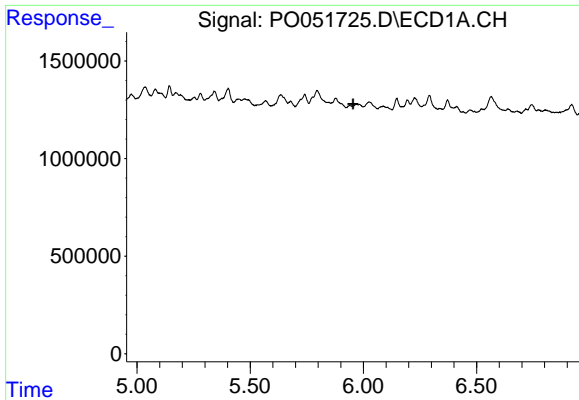
#22 AR-1248-2

R.T.: 5.741 min
 Delta R.T.: -0.009 min
 Response: 1255046
 Conc: 59.04 ng/ml



#22 AR-1248-2

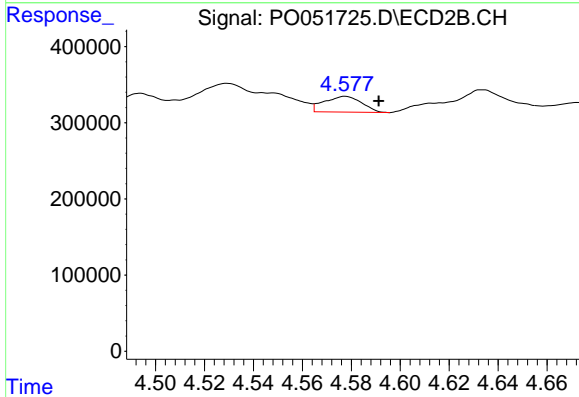
R.T.: 4.578 min
 Delta R.T.: 0.024 min
 Response: 221267
 Conc: 28.04 ng/ml



#23 AR-1248-3

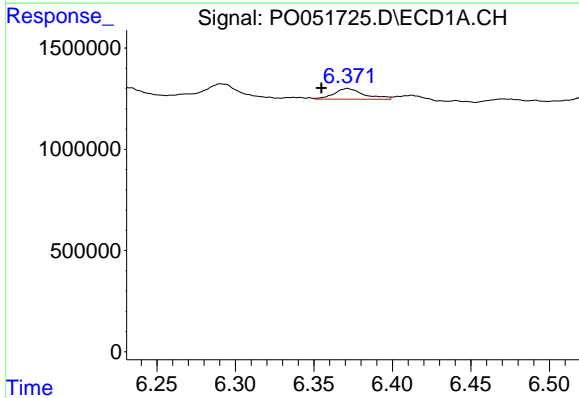
R.T.: 0.000 min
 Exp R.T.: 5.954 min
 Response: 0
 Conc: N.D.

Instrument :
 ECD_O
 ClientSampled :



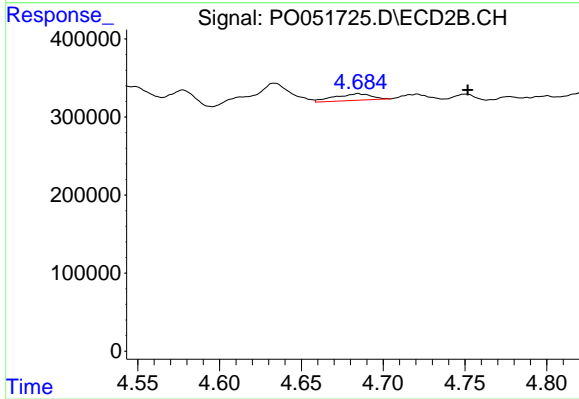
#23 AR-1248-3

R.T.: 4.578 min
 Delta R.T.: -0.014 min
 Response: 221267
 Conc: 28.22 ng/ml



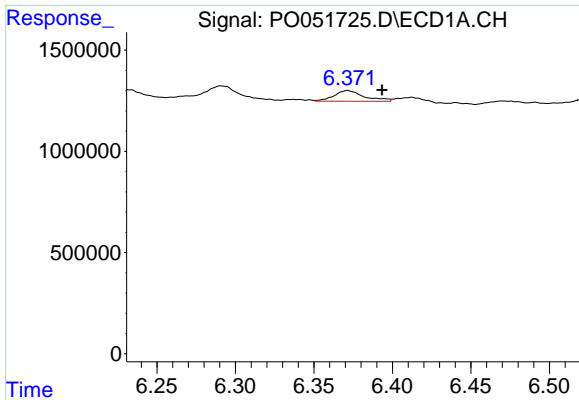
#24 AR-1248-4

R.T.: 6.371 min
 Delta R.T.: 0.017 min
 Response: 711051
 Conc: 26.90 ng/ml



#24 AR-1248-4

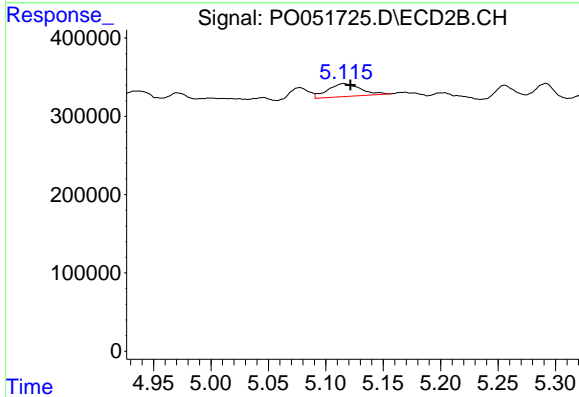
R.T.: 4.685 min
 Delta R.T.: -0.067 min
 Response: 134056
 Conc: 13.82 ng/ml



#25 AR-1248-5

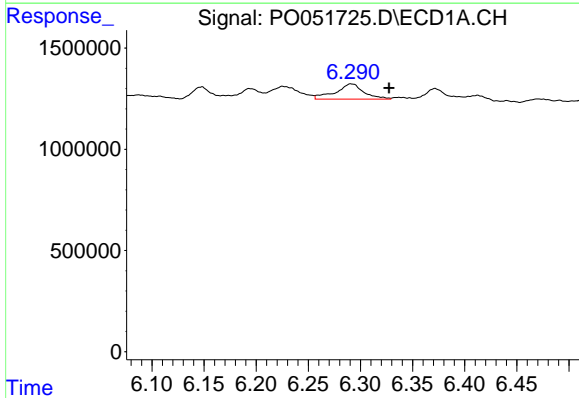
R.T.: 6.371 min
 Delta R.T.: -0.022 min
 Response: 711051
 Conc: 28.35 ng/ml

Instrument :
 ECD_O
 ClientSampleId :



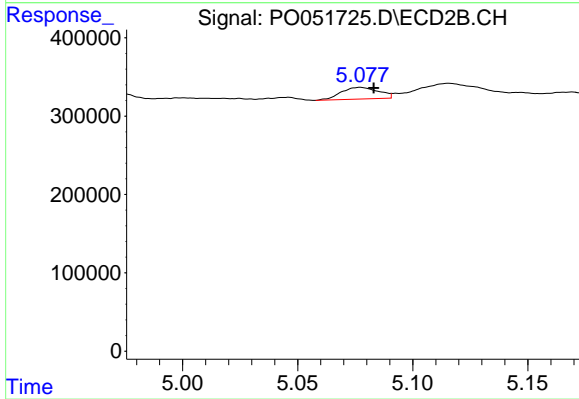
#25 AR-1248-5

R.T.: 5.116 min
 Delta R.T.: -0.006 min
 Response: 327889
 Conc: 34.73 ng/ml



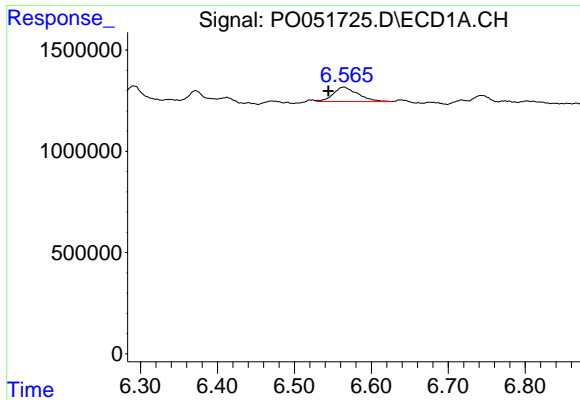
#26 AR-1254-1

R.T.: 6.291 min
 Delta R.T.: -0.037 min
 Response: 1422219
 Conc: 57.59 ng/ml



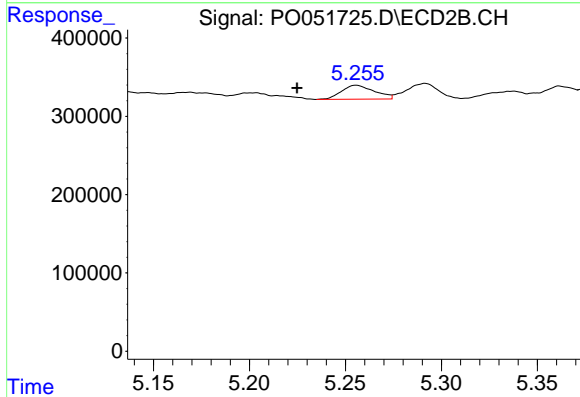
#26 AR-1254-1

R.T.: 5.077 min
 Delta R.T.: -0.006 min
 Response: 169563
 Conc: 12.33 ng/ml

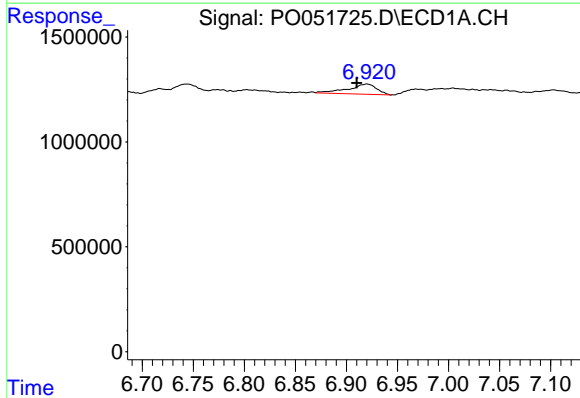


#27 AR-1254-2
 R.T.: 6.565 min
 Delta R.T.: 0.021 min
 Response: 1587206
 Conc: 40.75 ng/ml

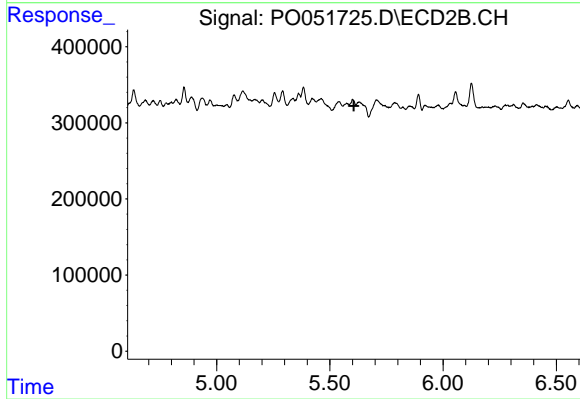
Instrument :
 ECD_O
 ClientSampleId :



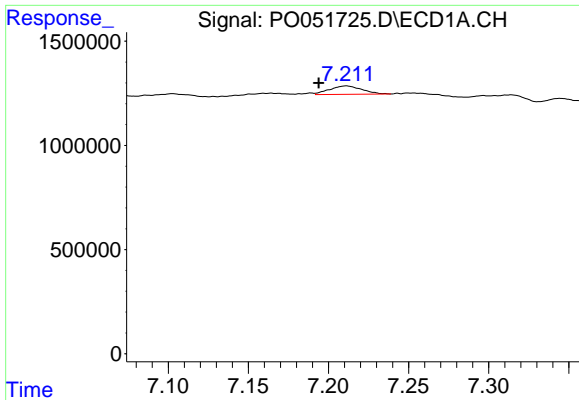
#27 AR-1254-2
 R.T.: 5.256 min
 Delta R.T.: 0.031 min
 Response: 211965
 Conc: 17.76 ng/ml



#28 AR-1254-3
 R.T.: 6.920 min
 Delta R.T.: 0.010 min
 Response: 952085
 Conc: 23.62 ng/ml

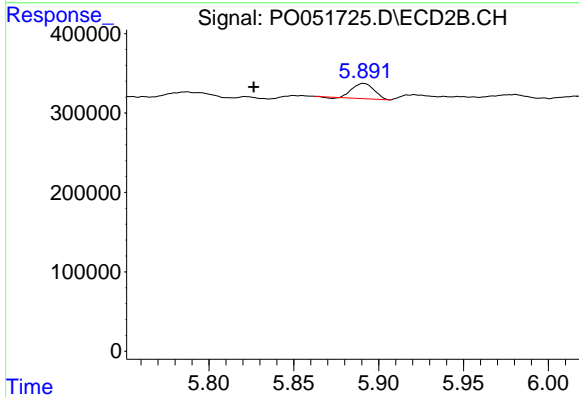


#28 AR-1254-3
 R.T.: 0.000 min
 Exp R.T. : 5.606 min
 Response: 0
 Conc: N.D.

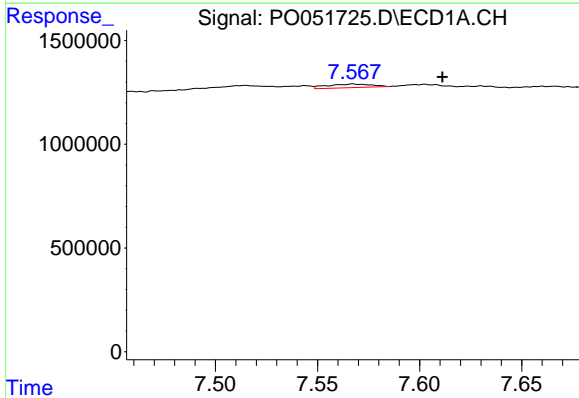


#29 AR-1254-4
 R.T.: 7.211 min
 Delta R.T.: 0.017 min
 Response: 567893
 Conc: 18.21 ng/ml

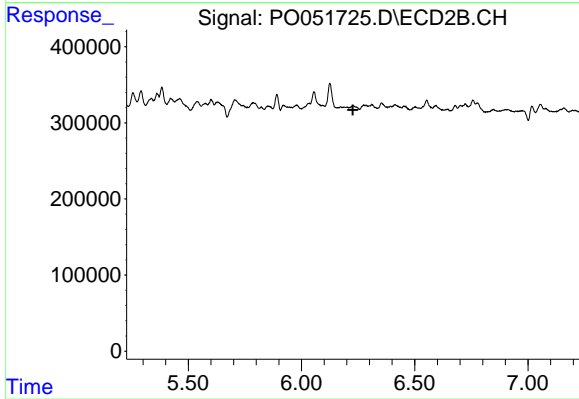
Instrument :
 ECD_O
 ClientSampleId :



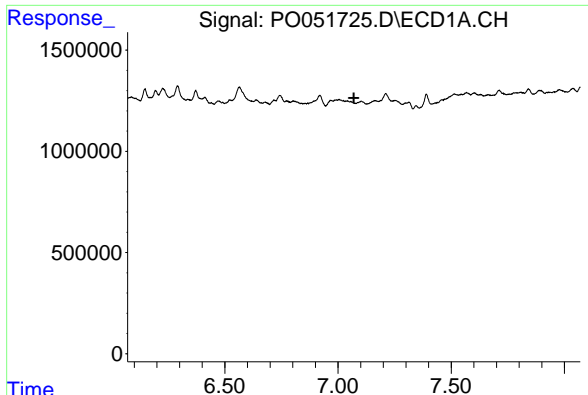
#29 AR-1254-4
 R.T.: 5.891 min
 Delta R.T.: 0.065 min
 Response: 170576
 Conc: 14.96 ng/ml



#30 AR-1254-5
 R.T.: 7.567 min
 Delta R.T.: -0.044 min
 Response: 265764
 Conc: 8.63 ng/ml

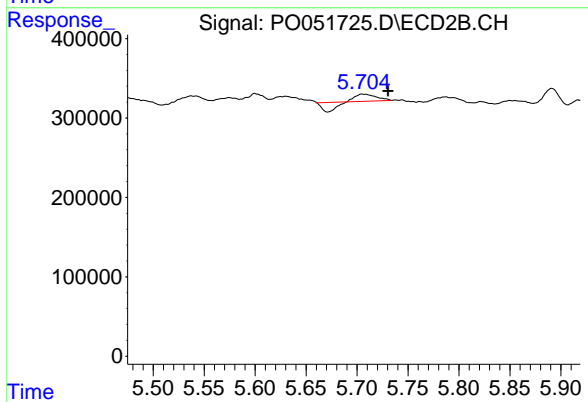


#30 AR-1254-5
 R.T.: 0.000 min
 Exp R.T. : 6.227 min
 Response: 0
 Conc: N.D.

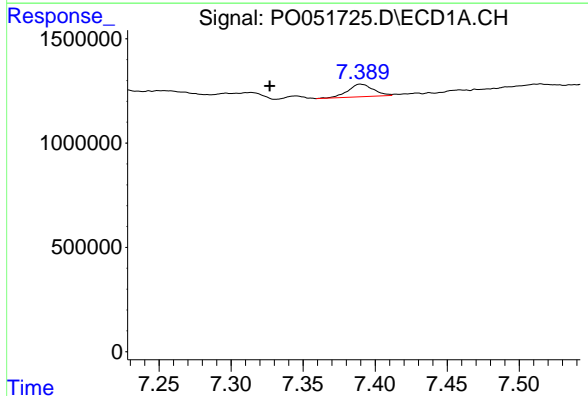


#31 AR-1260-1
 R.T.: 0.000 min
 Exp R.T.: 7.070 min
 Response: 0
 Conc: N.D.

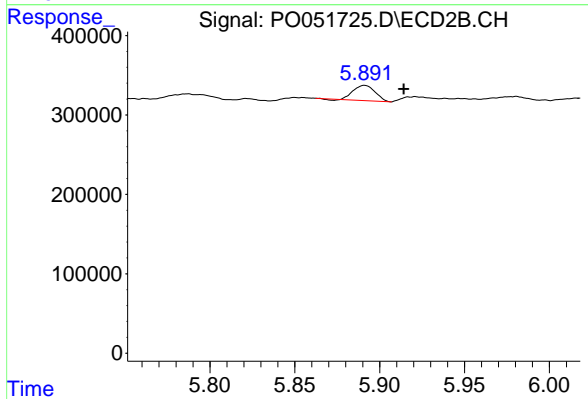
Instrument :
 ECD_O
 ClientSampled :



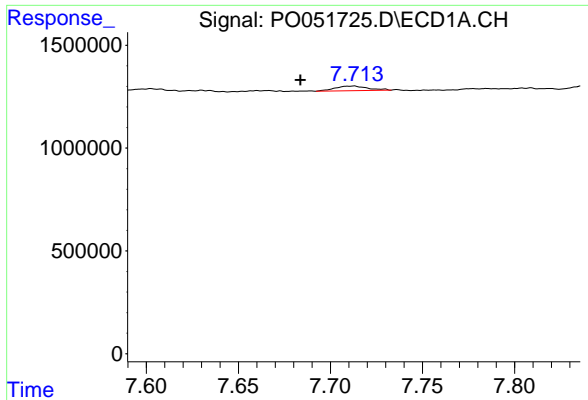
#31 AR-1260-1
 R.T.: 5.705 min
 Delta R.T.: -0.026 min
 Response: 26596
 Conc: 1.96 ng/ml



#32 AR-1260-2
 R.T.: 7.390 min
 Delta R.T.: 0.063 min
 Response: 739330
 Conc: 17.51 ng/ml

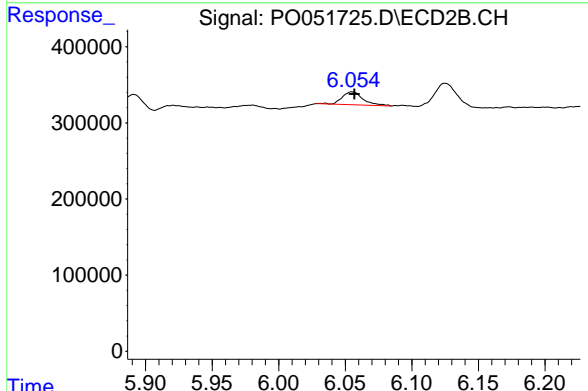


#32 AR-1260-2
 R.T.: 5.891 min
 Delta R.T.: -0.023 min
 Response: 170576
 Conc: 9.83 ng/ml

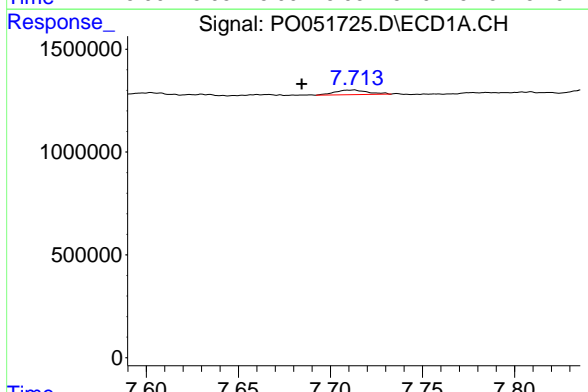


#33 AR-1260-3
 R.T.: 7.713 min
 Delta R.T.: 0.029 min
 Response: 284767
 Conc: 9.80 ng/ml

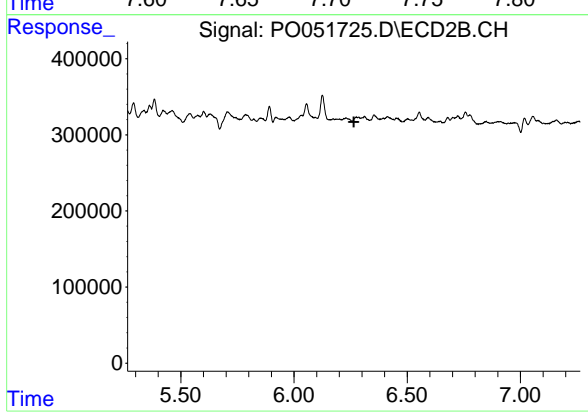
Instrument :
 ECD_O
 ClientSampleId :



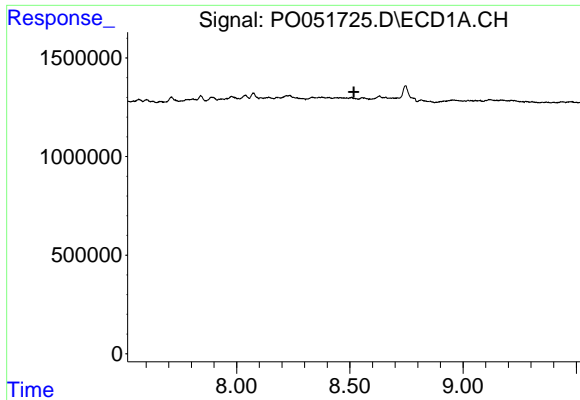
#33 AR-1260-3
 R.T.: 6.055 min
 Delta R.T.: -0.002 min
 Response: 185089
 Conc: 12.08 ng/ml



#36 AR-1262-1
 R.T.: 7.713 min
 Delta R.T.: 0.029 min
 Response: 284767
 Conc: 6.08 ng/ml



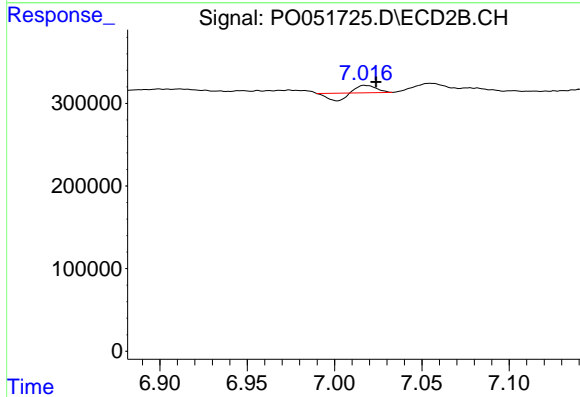
#36 AR-1262-1
 R.T.: 0.000 min
 Exp R.T. : 6.265 min
 Response: 0
 Conc: N.D.



#38 AR-1262-3

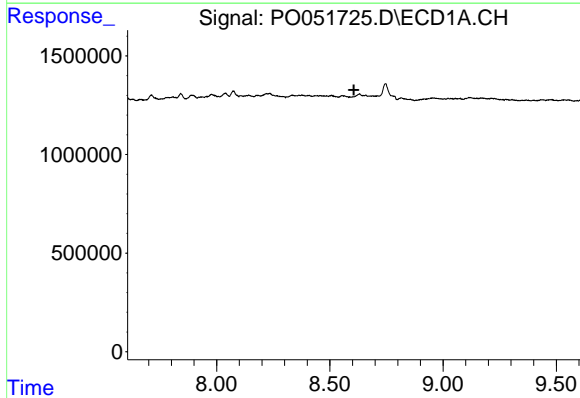
R.T.: 0.000 min
 Exp R.T. : 8.518 min
 Response: 0
 Conc: N.D.

Instrument :
 ECD_O
 ClientSampleId :



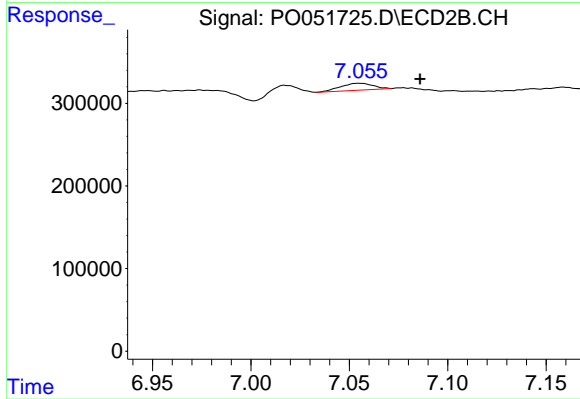
#38 AR-1262-3

R.T.: 7.017 min
 Delta R.T.: -0.007 min
 Response: 18455
 Conc: 1.48 ng/ml



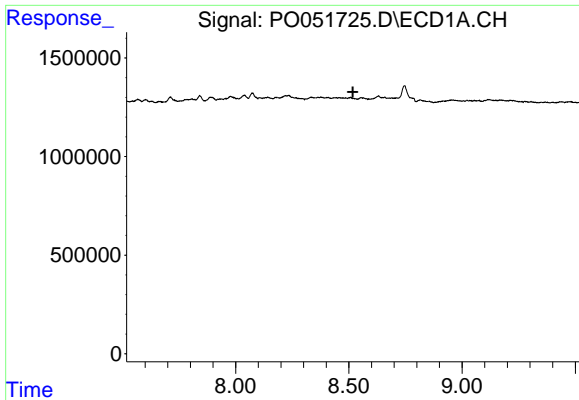
#39 AR-1262-4

R.T.: 0.000 min
 Exp R.T. : 8.606 min
 Response: 0
 Conc: N.D.



#39 AR-1262-4

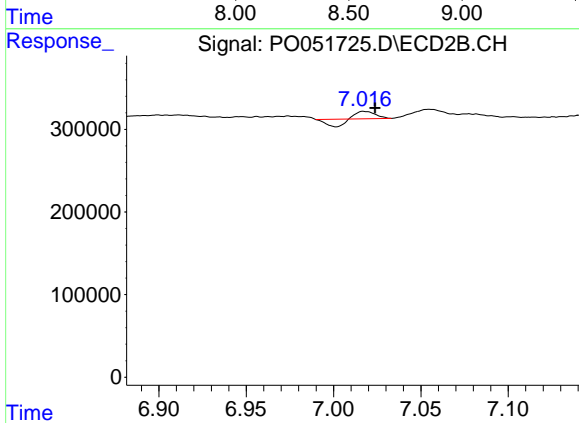
R.T.: 7.055 min
 Delta R.T.: -0.031 min
 Response: 95255
 Conc: 4.36 ng/ml



#41 AR-1268-1

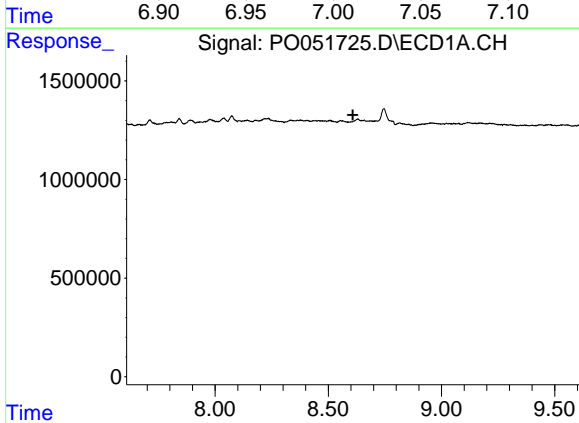
R.T.: 0.000 min
 Exp R.T. : 8.518 min
 Response: 0
 Conc: N.D.

Instrument :
 ECD_O
 ClientSampled :



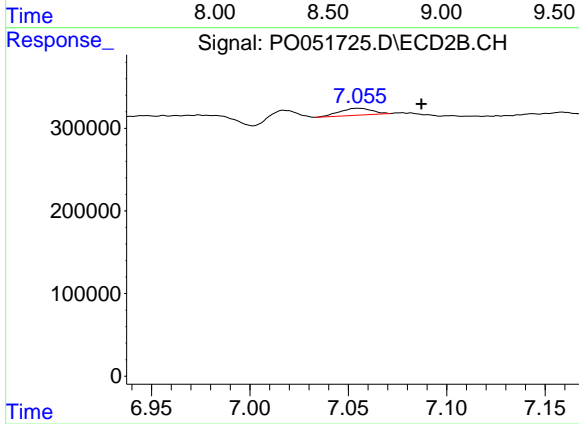
#41 AR-1268-1

R.T.: 7.017 min
 Delta R.T.: -0.007 min
 Response: 18455
 Conc: 0.47 ng/ml



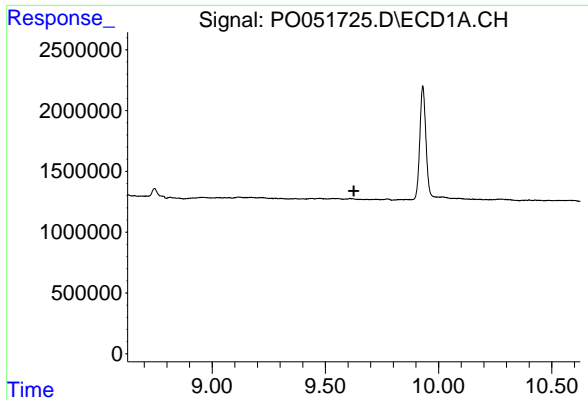
#42 AR-1268-2

R.T.: 0.000 min
 Exp R.T. : 8.608 min
 Response: 0
 Conc: N.D.



#42 AR-1268-2

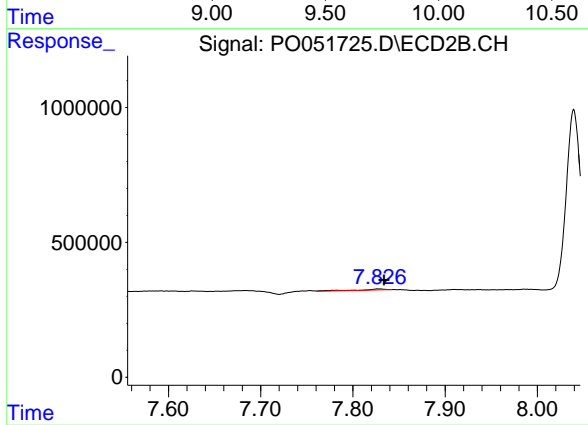
R.T.: 7.055 min
 Delta R.T.: -0.032 min
 Response: 95255
 Conc: 2.58 ng/ml



#45 AR-1268-5

R.T.: 0.000 min
 Exp R.T.: 9.626 min
 Response: 0
 Conc: N.D.

Instrument :
 ECD_O
 ClientSampled :



#45 AR-1268-5

R.T.: 7.827 min
 Delta R.T.: -0.007 min
 Response: 74786
 Conc: 0.87 ng/ml