

Data Path : Z:\pestpcbsrv\HPCHEM1\ECD_0\Data\PO112118\
 Data File : PO051727.D
 Signal(s) : Signal #1: ECD1A.CH Signal #2: ECD2B.CH
 Acq On : 21 Nov 2018 19:05
 Operator : SM/SJ
 Sample : J6023-03
 Misc :
 ALS Vial : 21 Sample Multiplier: 1

Instrument :
 ECD_0
 ClientSampled :

Integration File signal 1: autoint1.e
 Integration File signal 2: autoint2.e
 Quant Time: Nov 21 23:56:03 2018
 Quant Method : Z:\pestpcbsrv\HPCHEM1\ECD_0\methods\PO112018.M
 Quant Title : GC EXTRACTABLES
 QLast Update : Wed Nov 21 00:55:28 2018
 Response via : Initial Calibration
 Integrator: ChemStation 6890 Scale Mode: Small noise peaks clipped

Volume Inj. : 2 µl
 Signal #1 Phase : ZB-MR1 Signal #2 Phase: ZB-MR2
 Signal #1 Info : 30Mx0.32mmx 0.50µ Signal #2 Info : 30M x 0.32mm x 0.25µm

Compound	RT#1	RT#2	Resp#1	Resp#2	ng/ml	ng/ml
System Monitoring Compounds						
1) SA Tetrachlo...	4.310	3.313	19764531	6533321	26.255	27.295
2) SA Decachlor...	9.931	8.038	16947442	7699306	36.534	35.616
Target Compounds						
3) L1 AR-1016-1	0.000	4.322	0	171177	N.D.	23.082 #
4) L1 AR-1016-2	0.000	4.368	0	355298	N.D.	29.050 #
5) L1 AR-1016-3	5.632	4.493	1481844	326872	74.245	53.538 #
6) L1 AR-1016-4	5.673	4.530	432104	727402	26.019	137.084 #
7) L1 AR-1016-5	6.018	4.820	175583	135631	11.034	20.783 #
8) L2 AR-1221-1	4.480	3.482	1070578	353780	150.577	157.306
9) L2 AR-1221-2	4.598	3.585	2714673	491047	518.105	283.204 #
10) L2 AR-1221-3	4.698	3.664	2766367	175341	167.815	31.907 #
11) L3 AR-1232-1	4.698	3.664	2766367	175341	208.312	37.868 #
12) L3 AR-1232-2	5.175	4.368	147716	355298	20.336	66.341 #
13) L3 AR-1232-3	0.000	4.493	0	326872	N.D.	125.052 #
14) L3 AR-1232-4	5.673	4.579	432104	279701	60.692	126.903 #
15) L3 AR-1232-5	5.738	4.820	782157	135631	158.240	53.581 #
16) L4 AR-1242-1	0.000	4.322	0	171177	N.D.	28.847 #
17) L4 AR-1242-2	0.000	4.368	0	355298	N.D.	35.596 #
18) L4 AR-1242-3	5.632	4.493	1481844	326872	92.789	65.900 #
19) L4 AR-1242-4	5.673	4.579	432104	279701	32.723	59.026 #
20) L4 AR-1242-5	6.370	5.109	1093466	52306	81.811	8.677 #
21) L5 AR-1248-1	0.000	4.322	0	171177	N.D.	31.776 #
22) L5 AR-1248-2	5.738	4.530	782157	727402	36.792	92.187 #
23) L5 AR-1248-3	6.018	4.579	175583	279701	7.400	35.678 #
24) L5 AR-1248-4	6.370	4.820	1093466	135631	41.372	13.980 #
25) L5 AR-1248-5	6.370	5.109	1093466	52306	43.604	5.540 #
26) L6 AR-1254-1	6.292	5.109	712043	52306	28.830	3.805 #
27) L6 AR-1254-2	6.558	5.257	770185	203176	19.776	17.024
28) L6 AR-1254-3	6.918	0.000	866156	0	21.486	N.D. #
29) L6 AR-1254-4	7.212	5.892	629544	211468	20.184	18.540
30) L6 AR-1254-5	7.568	0.000	783469	0	25.444	N.D. #
31) L7 AR-1260-1	0.000	5.704	0	321126	N.D.	23.671 #
32) L7 AR-1260-2	7.391	5.892	833627	211468	19.747	12.186 #
33) L7 AR-1260-3	7.710	6.055	732836	121348	25.224	7.922 #
34) L7 AR-1260-4	0.000	6.552	0	202460	N.D.	19.923 #
35) L7 AR-1260-5	0.000	6.779	0	222897	N.D.	8.636 #
36) L8 AR-1262-1	7.710	0.000	732836	0	15.646	N.D. #
37) L8 AR-1262-2	0.000	6.779	0	222897	N.D.	7.389 #
38) L8 AR-1262-3	0.000	7.053	0	175307	N.D.	14.046 #
39) L8 AR-1262-4	0.000	7.053	0	175307	N.D.	8.032 #
41) L9 AR-1268-1	0.000	7.053	0	175307	N.D.	4.440 #
42) L9 AR-1268-2	0.000	7.053	0	175307	N.D.	4.750 #

Data Path : Z:\pestpcbsrv\HPCHEM1\ECD_0\Data\PO112118\
Data File : PO051727.D
Signal(s) : Signal #1: ECD1A.CH Signal #2: ECD2B.CH
Acq On : 21 Nov 2018 19:05
Operator : SM/SJ
Sample : J6023-03
Misc :
ALS Vial : 21 Sample Multiplier: 1

Instrument :
ECD_O
ClientSampleId :

Integration File signal 1: autoint1.e
Integration File signal 2: autoint2.e
Quant Time: Nov 21 23:56:03 2018
Quant Method : Z:\pestpcbsrv\HPCHEM1\ECD_0\methods\PO112018.M
Quant Title : GC EXTRACTABLES
QLast Update : Wed Nov 21 00:55:28 2018
Response via : Initial Calibration
Integrator: ChemStation 6890 Scale Mode: Small noise peaks clipped

Volume Inj. : 2 µl
Signal #1 Phase : ZB-MR1 Signal #2 Phase: ZB-MR2
Signal #1 Info : 30Mx0.32mmx 0.50µ Signal #2 Info : 30M x 0.32mm x 0.25µm

Compound	RT#1	RT#2	Resp#1	Resp#2	ng/ml	ng/ml
----------	------	------	--------	--------	-------	-------

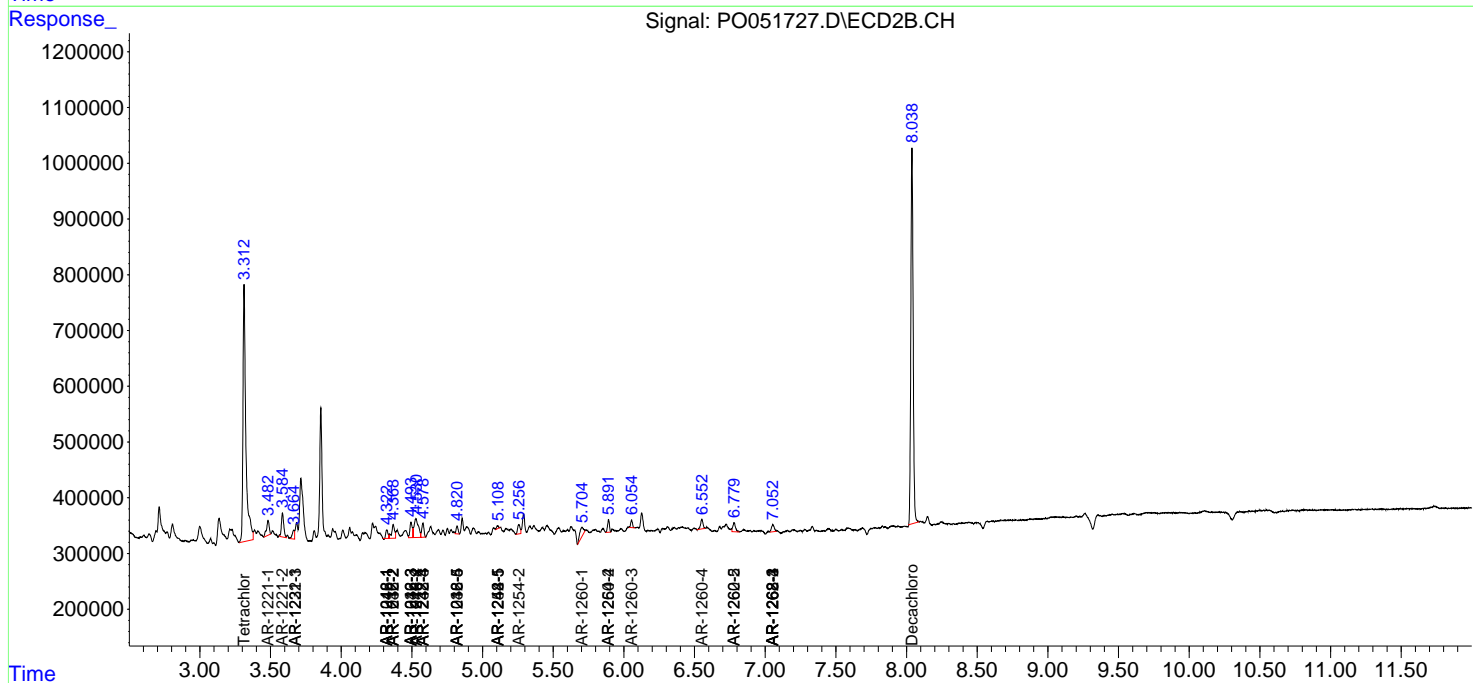
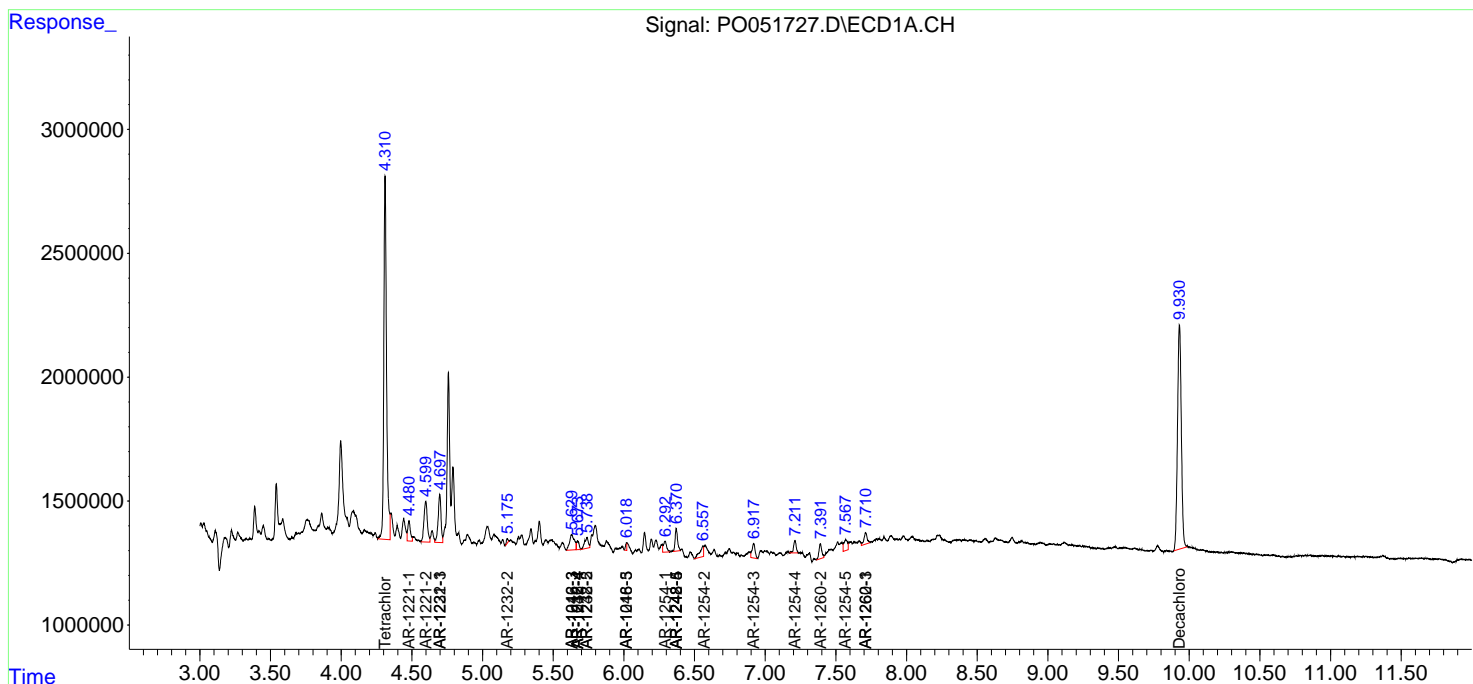
(f)=RT Delta > 1/2 Window (#)=Amounts differ by > 25% (m)=manual int.

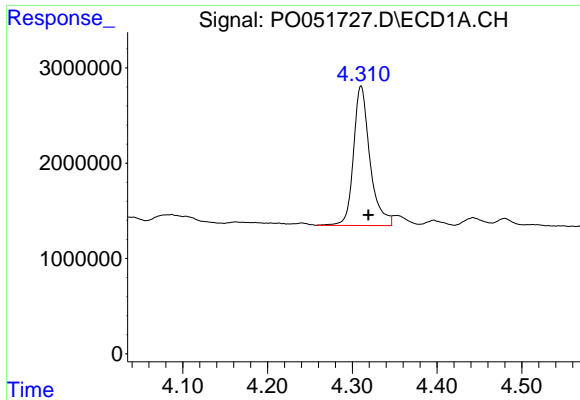
Data Path : Z:\pestpcbsrv\HPCHEM1\ECD_O\Data\PO112118\
 Data File : PO051727.D
 Signal(s) : Signal #1: ECD1A.CH Signal #2: ECD2B.CH
 Acq On : 21 Nov 2018 19:05
 Operator : SM/SJ
 Sample : J6023-03
 Misc :
 ALS Vial : 21 Sample Multiplier: 1

Instrument :
 ECD_O
 ClientSampled :

Integration File signal 1: autoint1.e
 Integration File signal 2: autoint2.e
 Quant Time: Nov 21 23:56:03 2018
 Quant Method : Z:\pestpcbsrv\HPCHEM1\ECD_O\methods\PO112018.M
 Quant Title : GC EXTRACTABLES
 QLast Update : Wed Nov 21 00:55:28 2018
 Response via : Initial Calibration
 Integrator: ChemStation 6890 Scale Mode: Small noise peaks clipped

Volume Inj. : 2 µl
 Signal #1 Phase : ZB-MR1 Signal #2 Phase: ZB-MR2
 Signal #1 Info : 30Mx0.32mmx 0.50µ Signal #2 Info : 30M x 0.32mm x 0.25µm

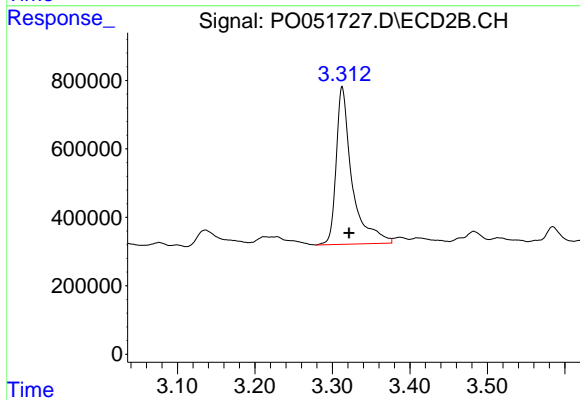




#1 Tetrachloro-m-xylene

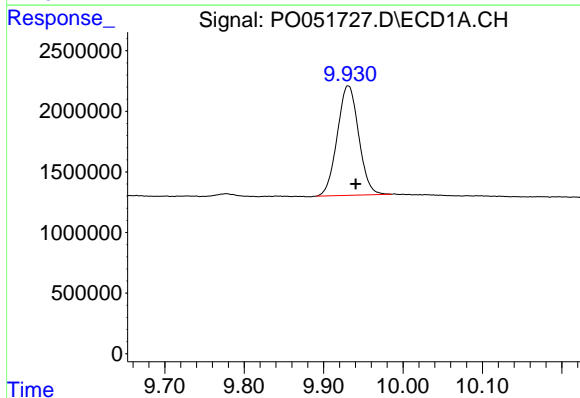
R.T.: 4.310 min
 Delta R.T.: -0.009 min
 Response: 19764531
 Conc: 26.25 ng/ml

Instrument :
 ECD_O
 ClientSampled :



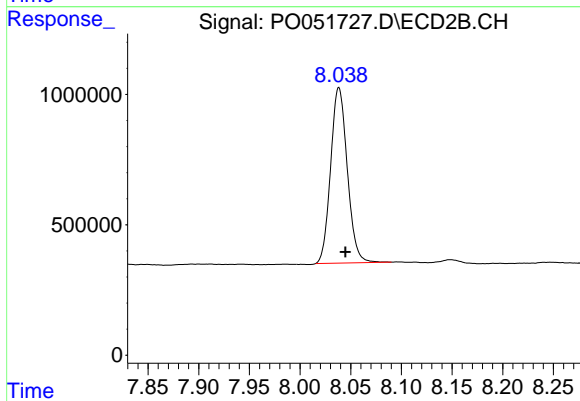
#1 Tetrachloro-m-xylene

R.T.: 3.313 min
 Delta R.T.: -0.009 min
 Response: 6533321
 Conc: 27.29 ng/ml



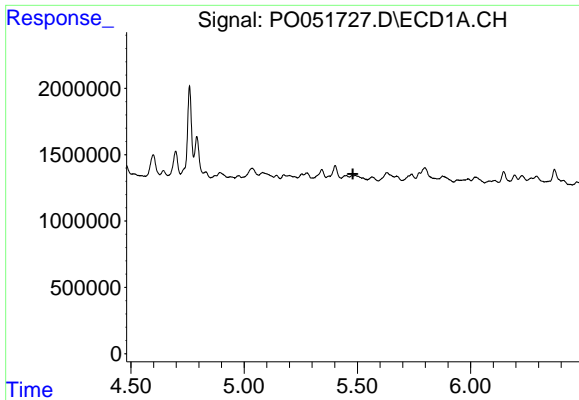
#2 Decachlorobiphenyl

R.T.: 9.931 min
 Delta R.T.: -0.010 min
 Response: 16947442
 Conc: 36.53 ng/ml



#2 Decachlorobiphenyl

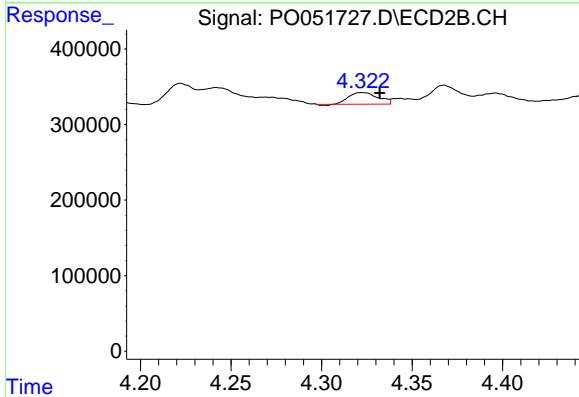
R.T.: 8.038 min
 Delta R.T.: -0.007 min
 Response: 7699306
 Conc: 35.62 ng/ml



#3 AR-1016-1

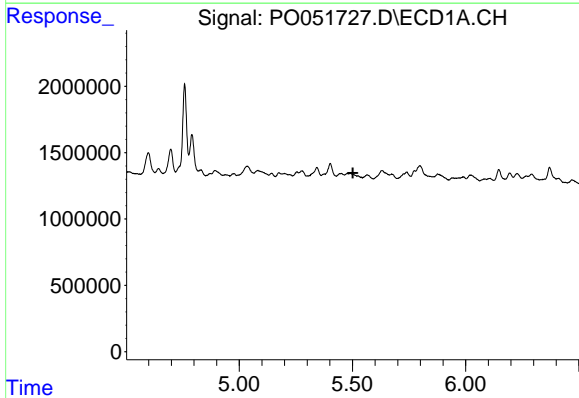
R.T.: 0.000 min
 Exp R.T. : 5.480 min
 Response: 0
 Conc: N.D.

Instrument :
 ECD_O
 ClientSampled :



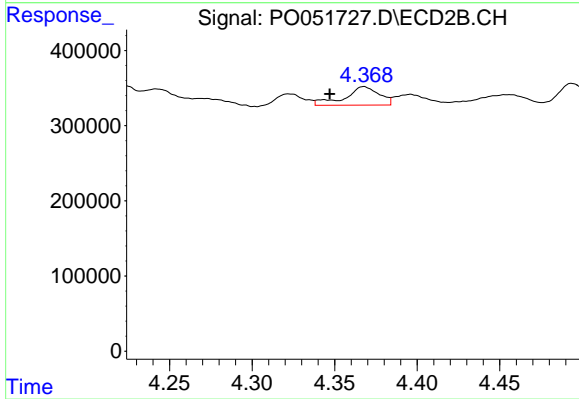
#3 AR-1016-1

R.T.: 4.322 min
 Delta R.T.: -0.010 min
 Response: 171177
 Conc: 23.08 ng/ml



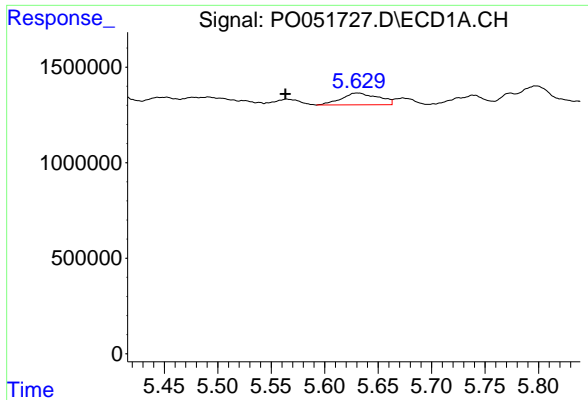
#4 AR-1016-2

R.T.: 0.000 min
 Exp R.T. : 5.502 min
 Response: 0
 Conc: N.D.



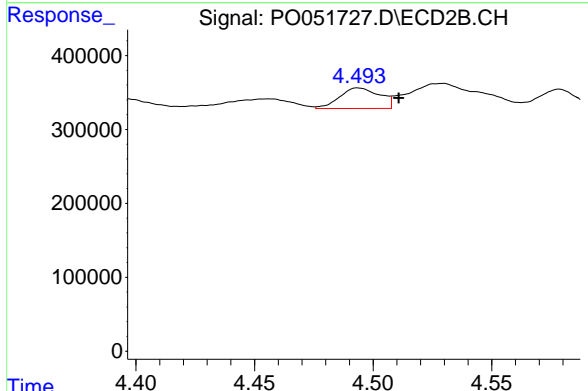
#4 AR-1016-2

R.T.: 4.368 min
 Delta R.T.: 0.021 min
 Response: 355298
 Conc: 29.05 ng/ml

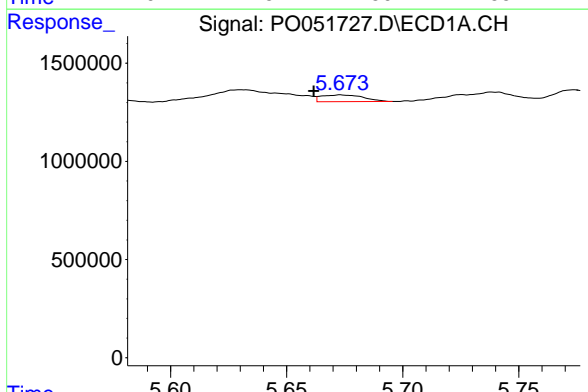


#5 AR-1016-3
 R.T.: 5.632 min
 Delta R.T.: 0.069 min
 Response: 1481844
 Conc: 74.25 ng/ml

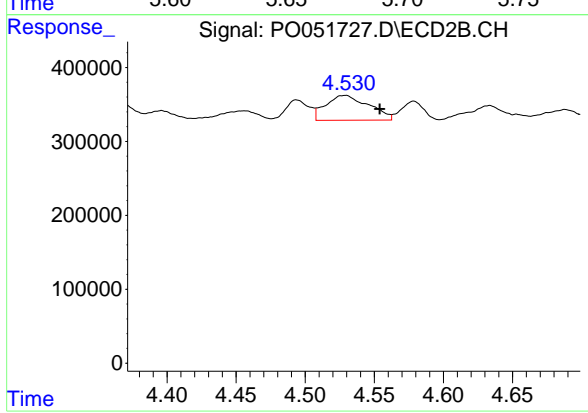
Instrument :
 ECD_O
 ClientSampleId :



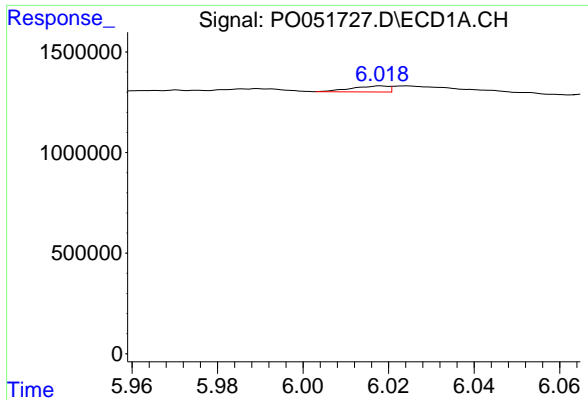
#5 AR-1016-3
 R.T.: 4.493 min
 Delta R.T.: -0.017 min
 Response: 326872
 Conc: 53.54 ng/ml



#6 AR-1016-4
 R.T.: 5.673 min
 Delta R.T.: 0.011 min
 Response: 432104
 Conc: 26.02 ng/ml

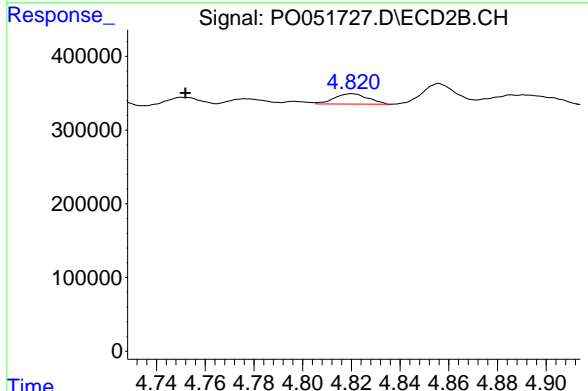


#6 AR-1016-4
 R.T.: 4.530 min
 Delta R.T.: -0.024 min
 Response: 727402
 Conc: 137.08 ng/ml

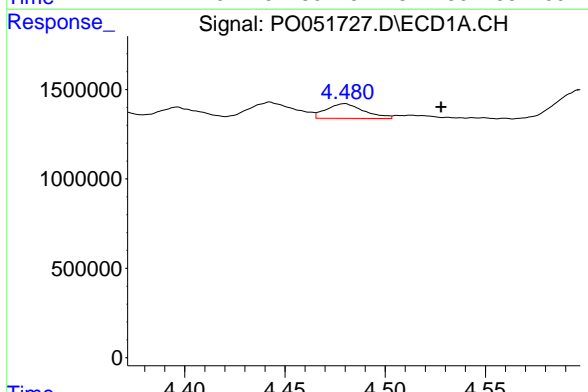


#7 AR-1016-5
 R.T.: 6.018 min
 Delta R.T.: 0.065 min
 Response: 175583
 Conc: 11.03 ng/ml

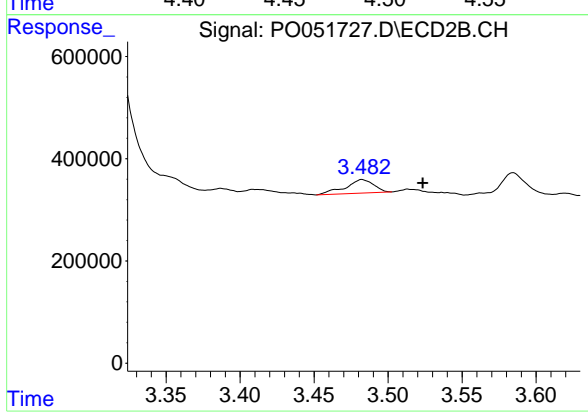
Instrument :
 ECD_O
 ClientSampled :



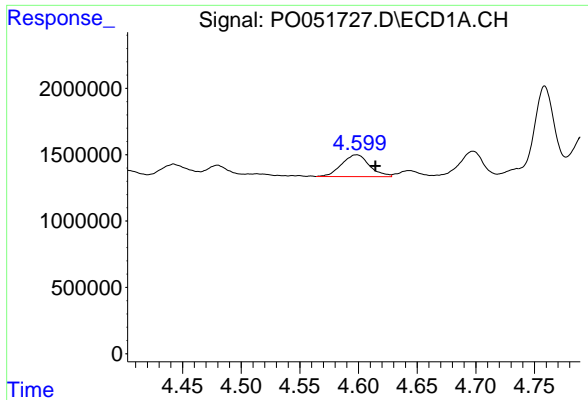
#7 AR-1016-5
 R.T.: 4.820 min
 Delta R.T.: 0.068 min
 Response: 135631
 Conc: 20.78 ng/ml



#8 AR-1221-1
 R.T.: 4.480 min
 Delta R.T.: -0.048 min
 Response: 1070578
 Conc: 150.58 ng/ml

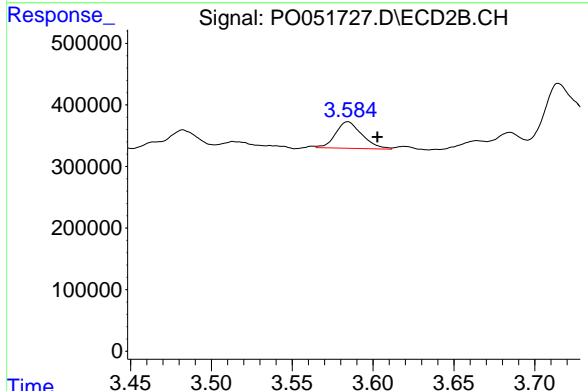


#8 AR-1221-1
 R.T.: 3.482 min
 Delta R.T.: -0.041 min
 Response: 353780
 Conc: 157.31 ng/ml

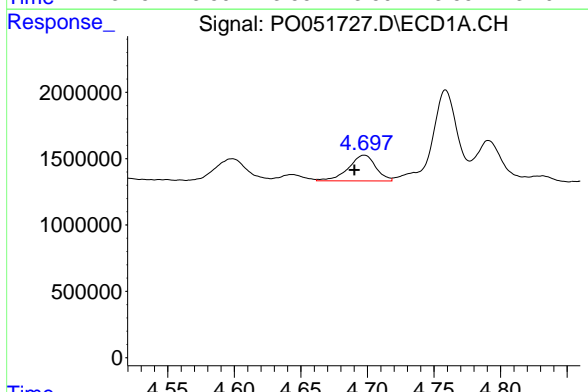


#9 AR-1221-2
 R.T.: 4.598 min
 Delta R.T.: -0.016 min
 Response: 2714673
 Conc: 518.11 ng/ml

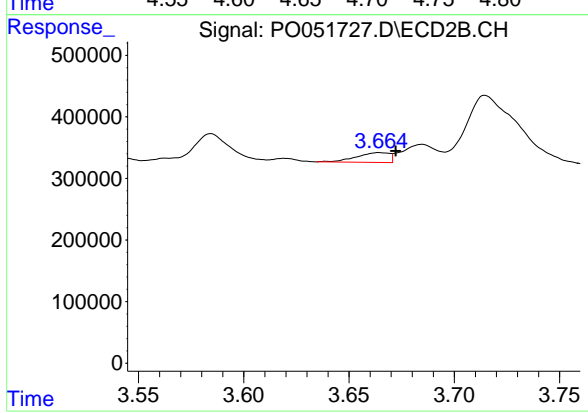
Instrument :
 ECD_O
 ClientSampleId :



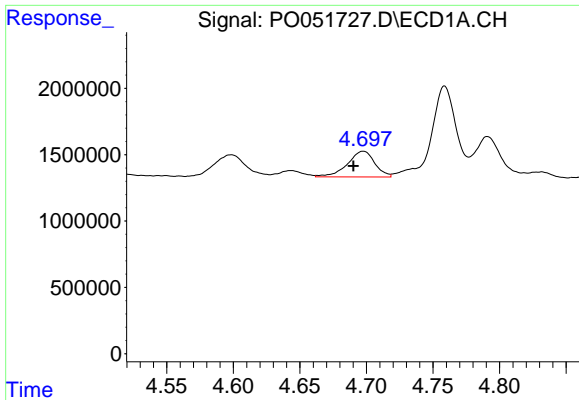
#9 AR-1221-2
 R.T.: 3.585 min
 Delta R.T.: -0.018 min
 Response: 491047
 Conc: 283.20 ng/ml



#10 AR-1221-3
 R.T.: 4.698 min
 Delta R.T.: 0.007 min
 Response: 2766367
 Conc: 167.81 ng/ml



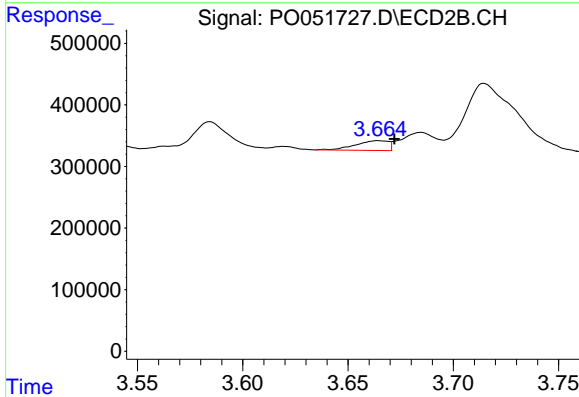
#10 AR-1221-3
 R.T.: 3.664 min
 Delta R.T.: -0.008 min
 Response: 175341
 Conc: 31.91 ng/ml



#11 AR-1232-1

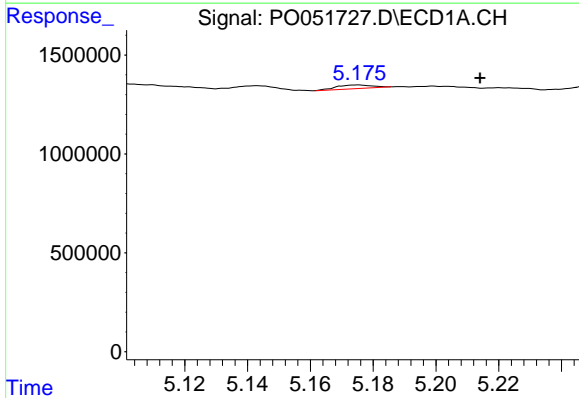
R.T.: 4.698 min
 Delta R.T.: 0.007 min
 Response: 2766367
 Conc: 208.31 ng/ml

Instrument :
 ECD_O
 ClientSampleId :



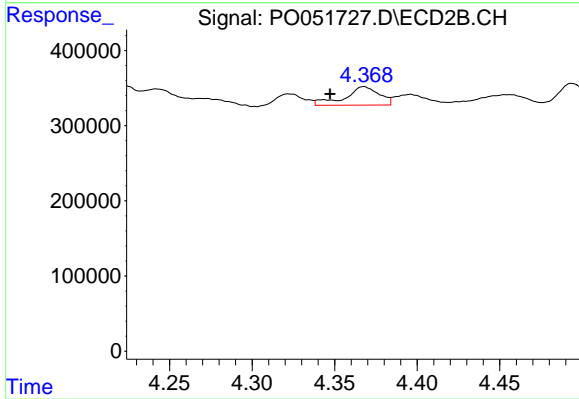
#11 AR-1232-1

R.T.: 3.664 min
 Delta R.T.: -0.008 min
 Response: 175341
 Conc: 37.87 ng/ml



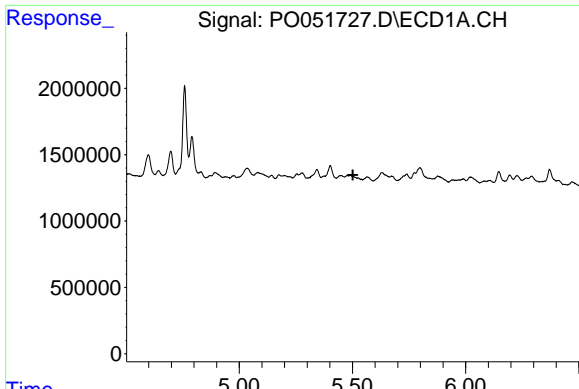
#12 AR-1232-2

R.T.: 5.175 min
 Delta R.T.: -0.039 min
 Response: 147716
 Conc: 20.34 ng/ml



#12 AR-1232-2

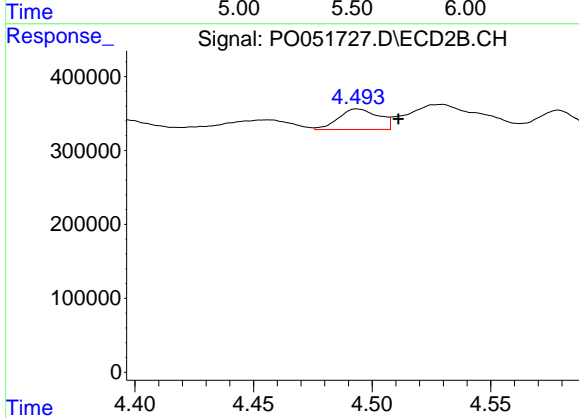
R.T.: 4.368 min
 Delta R.T.: 0.021 min
 Response: 355298
 Conc: 66.34 ng/ml



#13 AR-1232-3

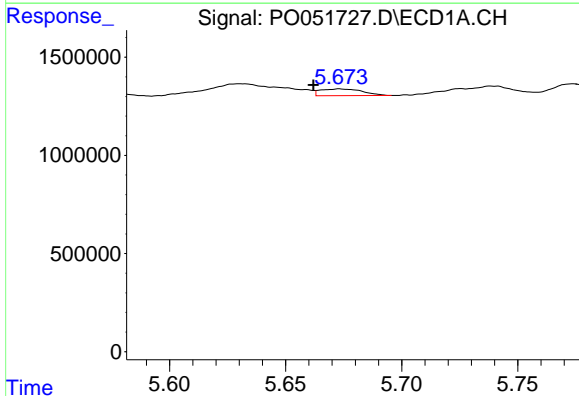
R.T.: 0.000 min
 Exp R.T.: 5.502 min
 Response: 0
 Conc: N.D.

Instrument :
 ECD_O
 ClientSampled :



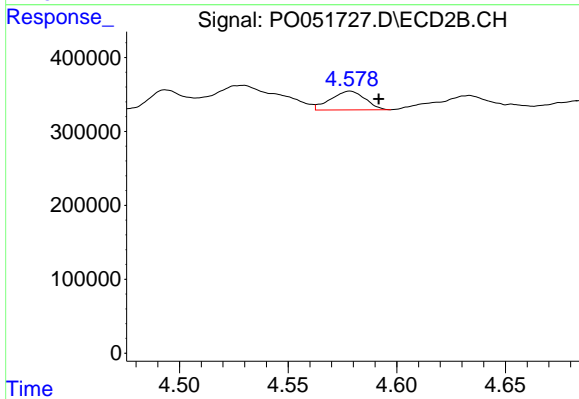
#13 AR-1232-3

R.T.: 4.493 min
 Delta R.T.: -0.018 min
 Response: 326872
 Conc: 125.05 ng/ml



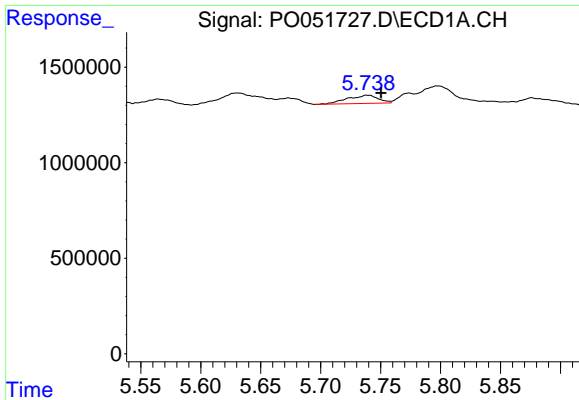
#14 AR-1232-4

R.T.: 5.673 min
 Delta R.T.: 0.011 min
 Response: 432104
 Conc: 60.69 ng/ml



#14 AR-1232-4

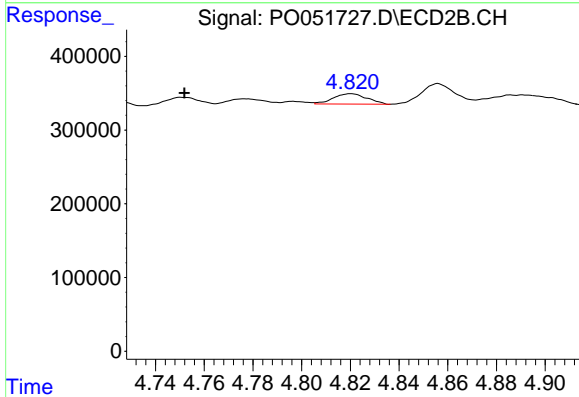
R.T.: 4.579 min
 Delta R.T.: -0.013 min
 Response: 279701
 Conc: 126.90 ng/ml



#15 AR-1232-5

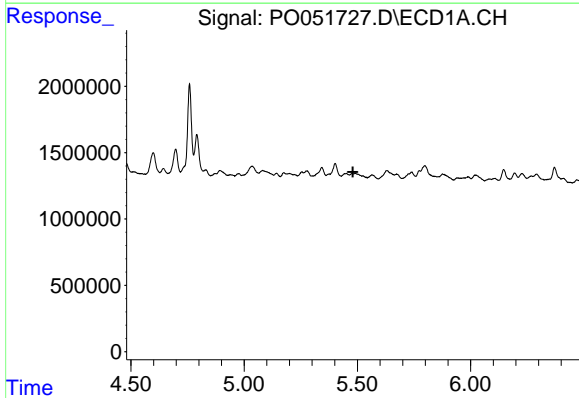
R.T.: 5.738 min
 Delta R.T.: -0.012 min
 Response: 782157
 Conc: 158.24 ng/ml

Instrument :
 ECD_O
 ClientSampleId :



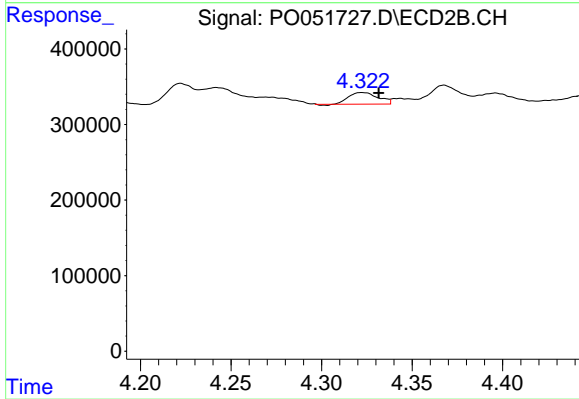
#15 AR-1232-5

R.T.: 4.820 min
 Delta R.T.: 0.068 min
 Response: 135631
 Conc: 53.58 ng/ml



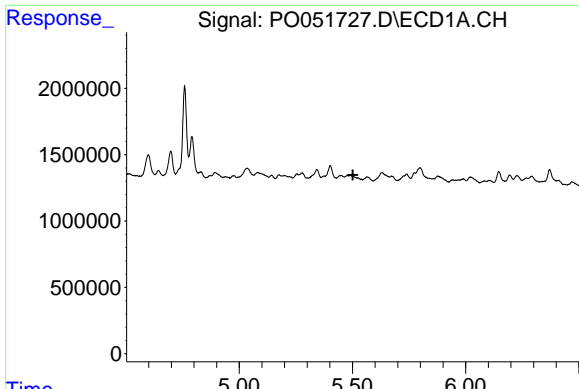
#16 AR-1242-1

R.T.: 0.000 min
 Exp R.T. : 5.480 min
 Response: 0
 Conc: N.D.



#16 AR-1242-1

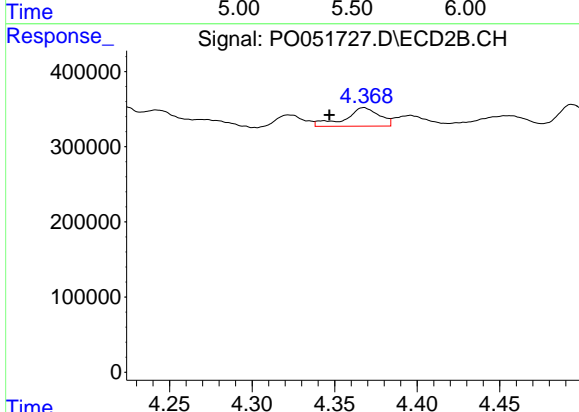
R.T.: 4.322 min
 Delta R.T.: -0.009 min
 Response: 171177
 Conc: 28.85 ng/ml



#17 AR-1242-2

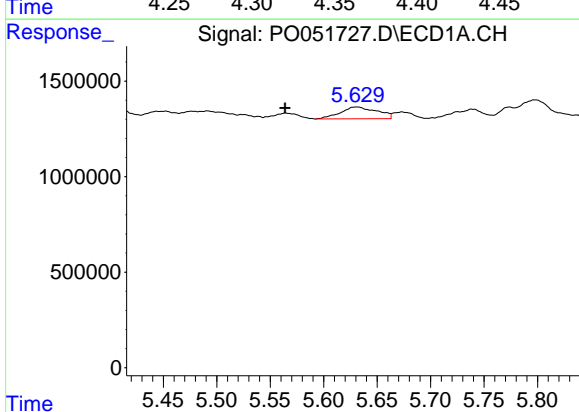
R.T.: 0.000 min
 Exp R.T.: 5.502 min
 Response: 0
 Conc: N.D.

Instrument :
 ECD_O
 ClientSampled :



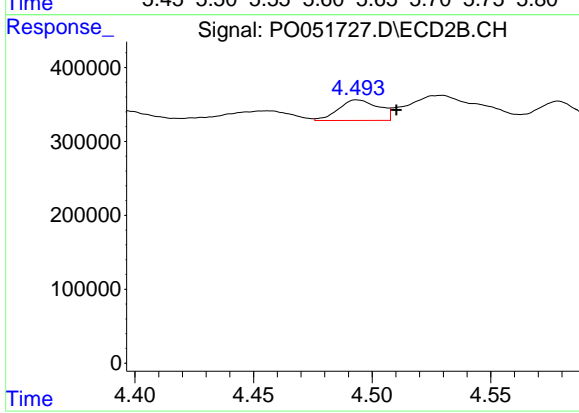
#17 AR-1242-2

R.T.: 4.368 min
 Delta R.T.: 0.021 min
 Response: 355298
 Conc: 35.60 ng/ml



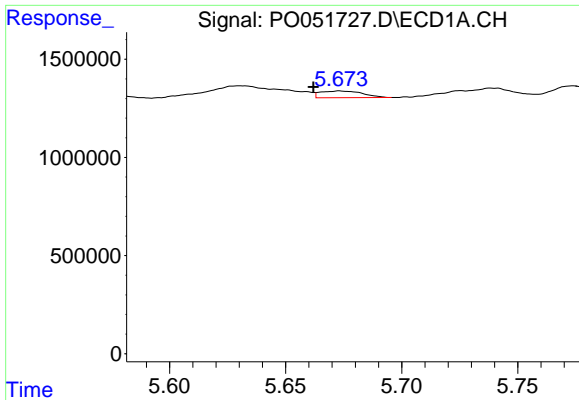
#18 AR-1242-3

R.T.: 5.632 min
 Delta R.T.: 0.068 min
 Response: 1481844
 Conc: 92.79 ng/ml



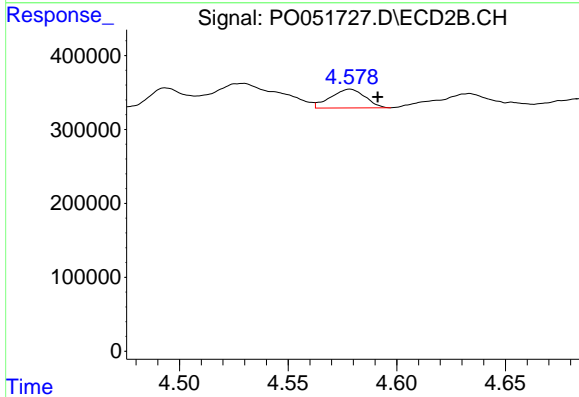
#18 AR-1242-3

R.T.: 4.493 min
 Delta R.T.: -0.017 min
 Response: 326872
 Conc: 65.90 ng/ml

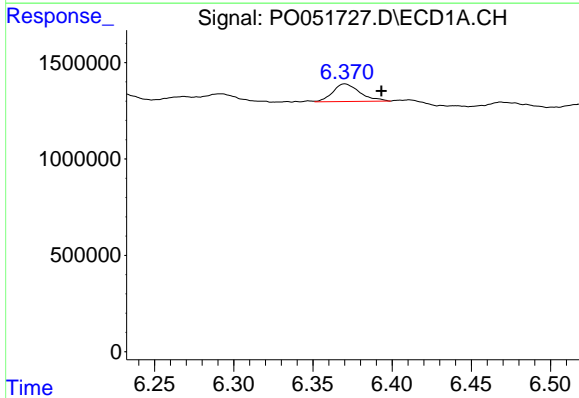


#19 AR-1242-4
 R.T.: 5.673 min
 Delta R.T.: 0.011 min
 Response: 432104
 Conc: 32.72 ng/ml

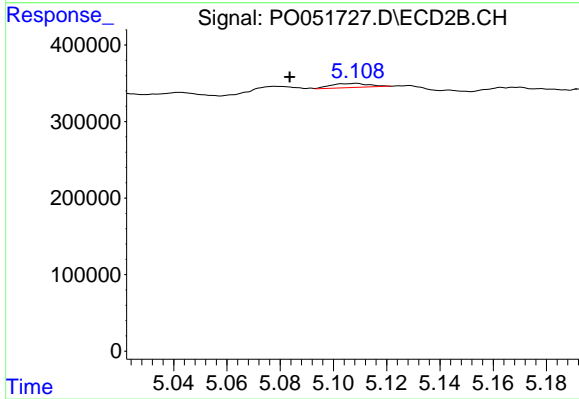
Instrument :
 ECD_O
 ClientSampleId :



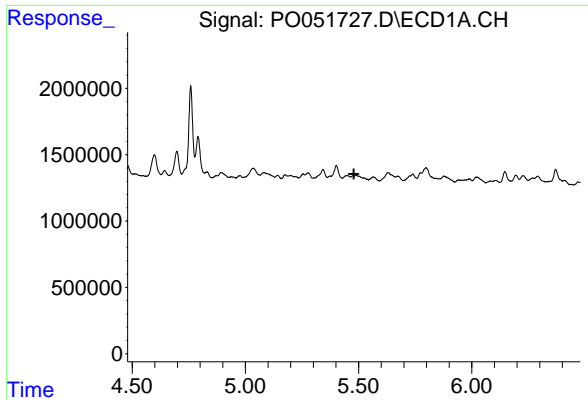
#19 AR-1242-4
 R.T.: 4.579 min
 Delta R.T.: -0.013 min
 Response: 279701
 Conc: 59.03 ng/ml



#20 AR-1242-5
 R.T.: 6.370 min
 Delta R.T.: -0.023 min
 Response: 1093466
 Conc: 81.81 ng/ml



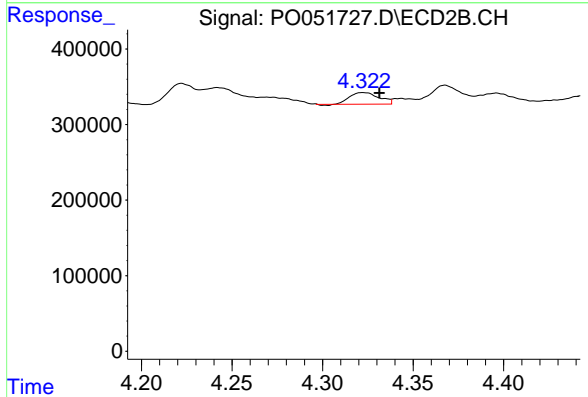
#20 AR-1242-5
 R.T.: 5.109 min
 Delta R.T.: 0.025 min
 Response: 52306
 Conc: 8.68 ng/ml



#21 AR-1248-1

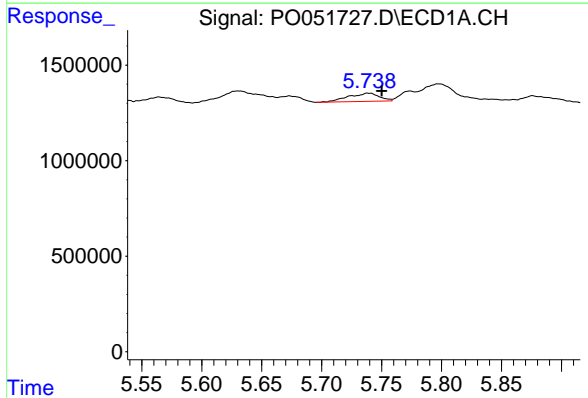
R.T.: 0.000 min
 Exp R.T.: 5.480 min
 Response: 0
 Conc: N.D.

Instrument :
 ECD_O
 ClientSampled :



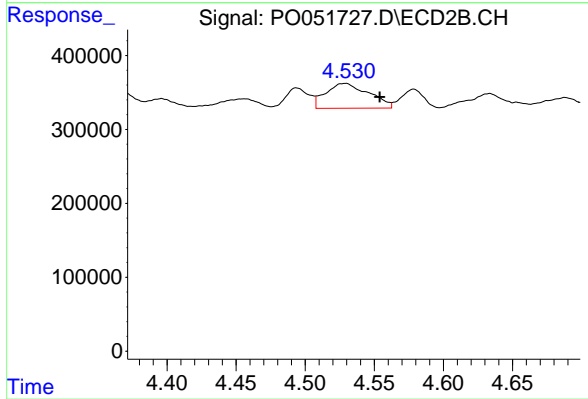
#21 AR-1248-1

R.T.: 4.322 min
 Delta R.T.: -0.009 min
 Response: 171177
 Conc: 31.78 ng/ml



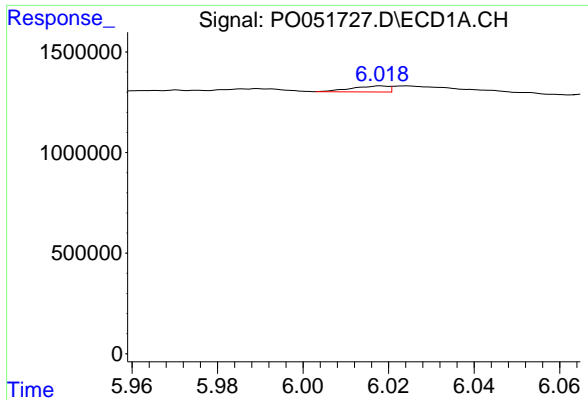
#22 AR-1248-2

R.T.: 5.738 min
 Delta R.T.: -0.012 min
 Response: 782157
 Conc: 36.79 ng/ml



#22 AR-1248-2

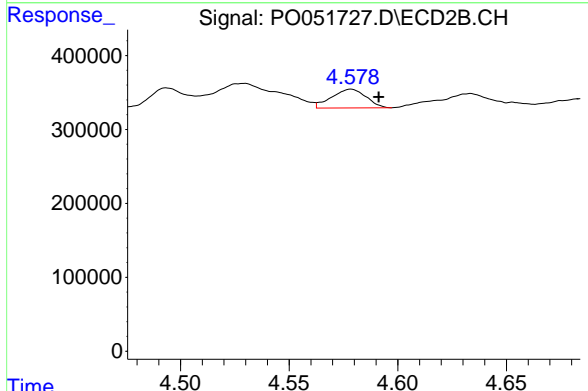
R.T.: 4.530 min
 Delta R.T.: -0.024 min
 Response: 727402
 Conc: 92.19 ng/ml



#23 AR-1248-3

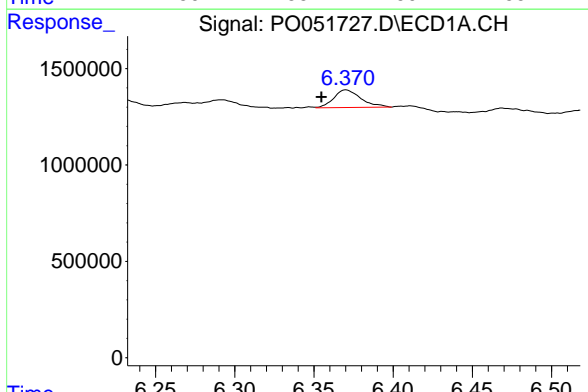
R.T.: 6.018 min
 Delta R.T.: 0.064 min
 Response: 175583
 Conc: 7.40 ng/ml

Instrument :
 ECD_O
 ClientSampled :



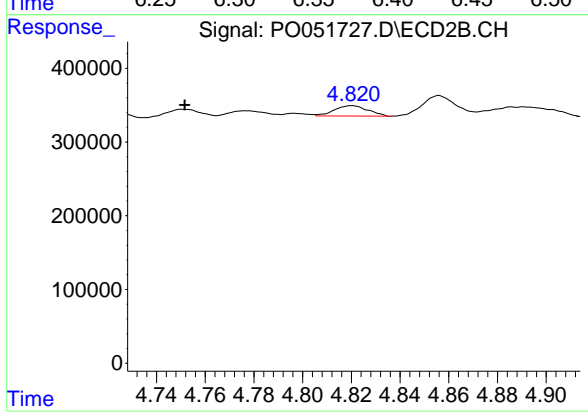
#23 AR-1248-3

R.T.: 4.579 min
 Delta R.T.: -0.013 min
 Response: 279701
 Conc: 35.68 ng/ml



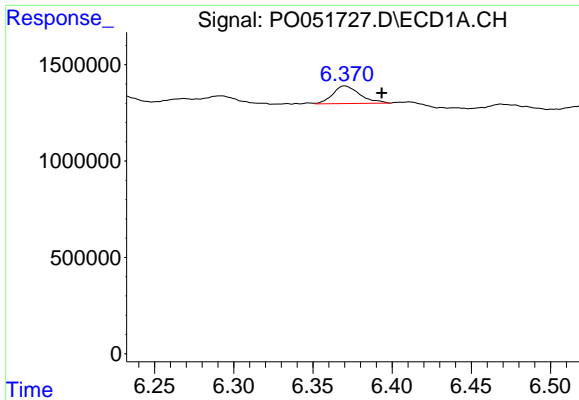
#24 AR-1248-4

R.T.: 6.370 min
 Delta R.T.: 0.015 min
 Response: 1093466
 Conc: 41.37 ng/ml



#24 AR-1248-4

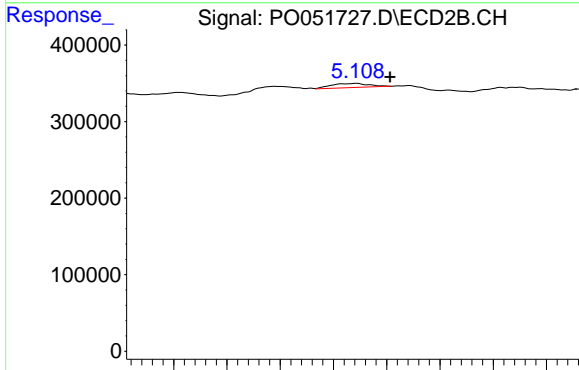
R.T.: 4.820 min
 Delta R.T.: 0.069 min
 Response: 135631
 Conc: 13.98 ng/ml



#25 AR-1248-5

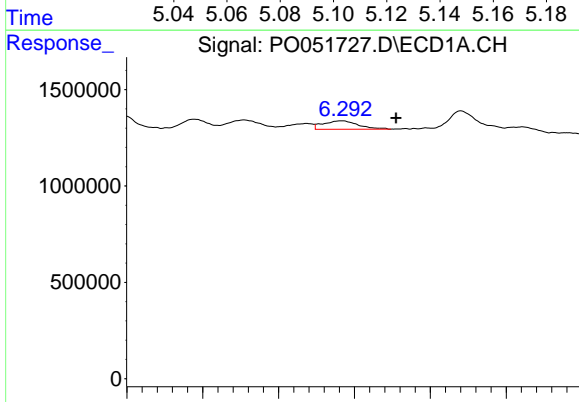
R.T.: 6.370 min
 Delta R.T.: -0.023 min
 Response: 1093466
 Conc: 43.60 ng/ml

Instrument :
 ECD_O
 ClientSampleId :



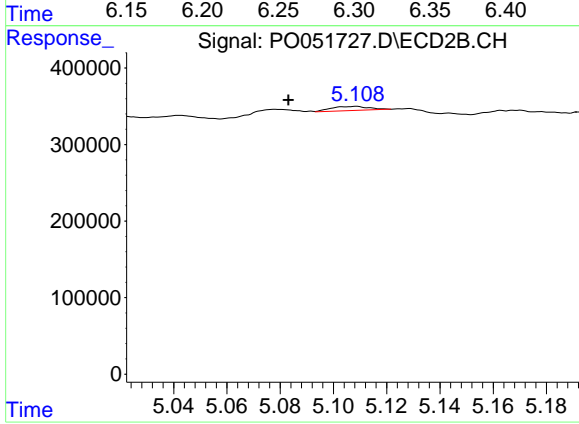
#25 AR-1248-5

R.T.: 5.109 min
 Delta R.T.: -0.013 min
 Response: 52306
 Conc: 5.54 ng/ml



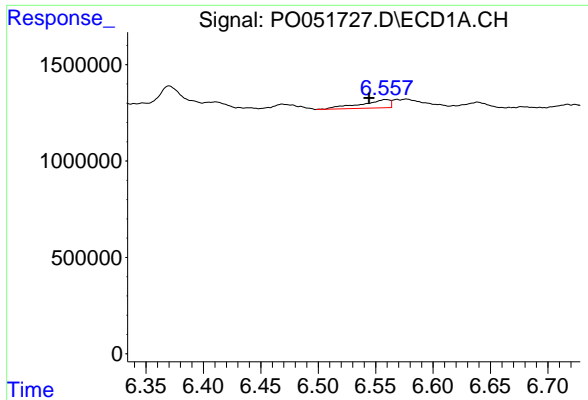
#26 AR-1254-1

R.T.: 6.292 min
 Delta R.T.: -0.035 min
 Response: 712043
 Conc: 28.83 ng/ml



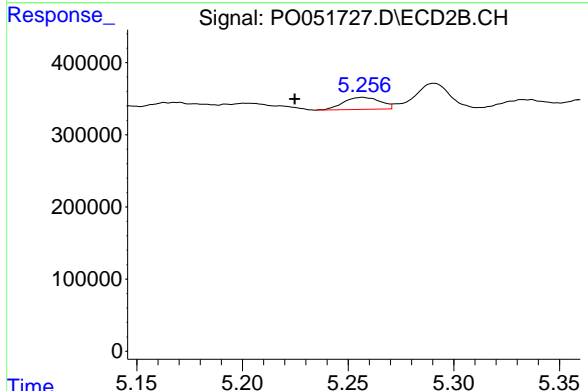
#26 AR-1254-1

R.T.: 5.109 min
 Delta R.T.: 0.026 min
 Response: 52306
 Conc: 3.80 ng/ml

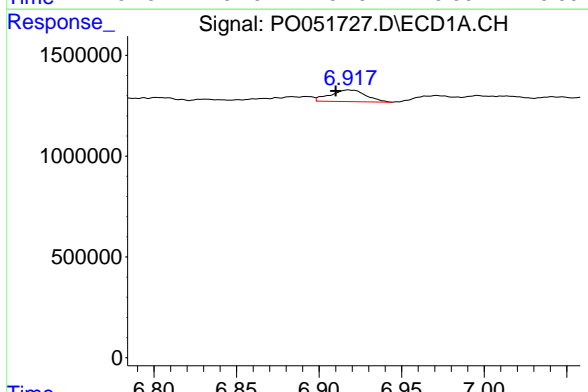


#27 AR-1254-2
 R.T.: 6.558 min
 Delta R.T.: 0.014 min
 Response: 770185
 Conc: 19.78 ng/ml

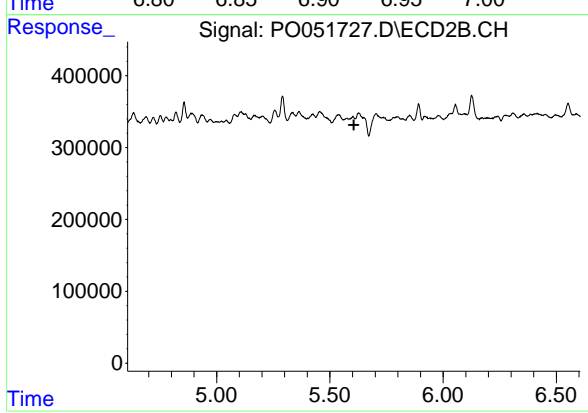
Instrument :
 ECD_O
 ClientSampleId :



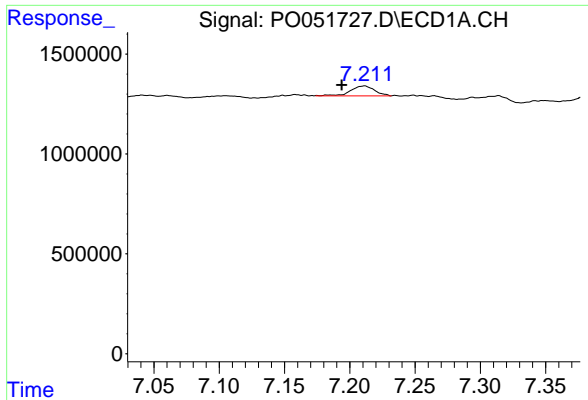
#27 AR-1254-2
 R.T.: 5.257 min
 Delta R.T.: 0.032 min
 Response: 203176
 Conc: 17.02 ng/ml



#28 AR-1254-3
 R.T.: 6.918 min
 Delta R.T.: 0.008 min
 Response: 866156
 Conc: 21.49 ng/ml

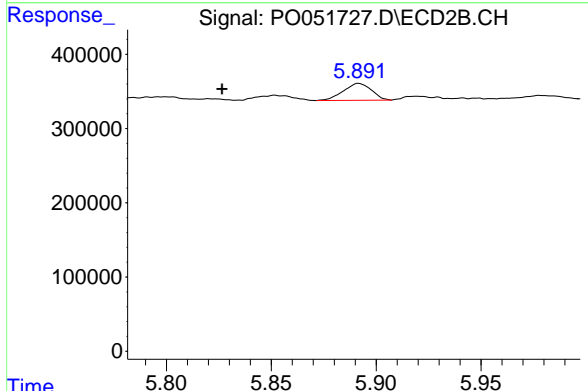


#28 AR-1254-3
 R.T.: 0.000 min
 Exp R.T. : 5.606 min
 Response: 0
 Conc: N.D.

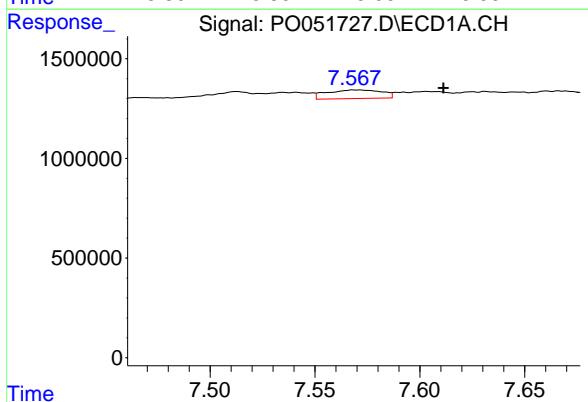


#29 AR-1254-4
 R.T.: 7.212 min
 Delta R.T.: 0.018 min
 Response: 629544
 Conc: 20.18 ng/ml

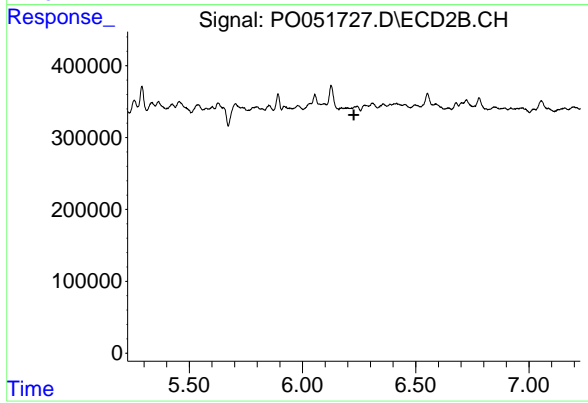
Instrument :
 ECD_O
 ClientSampled :



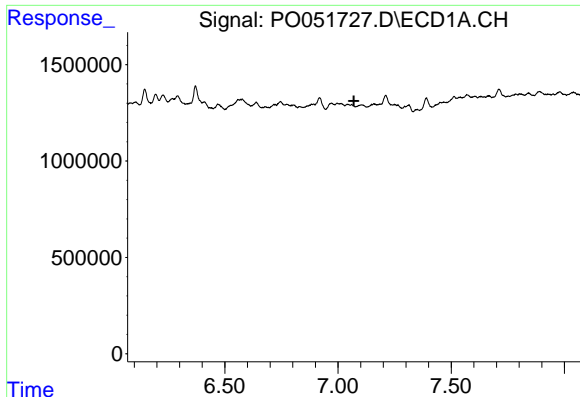
#29 AR-1254-4
 R.T.: 5.892 min
 Delta R.T.: 0.065 min
 Response: 211468
 Conc: 18.54 ng/ml



#30 AR-1254-5
 R.T.: 7.568 min
 Delta R.T.: -0.043 min
 Response: 783469
 Conc: 25.44 ng/ml



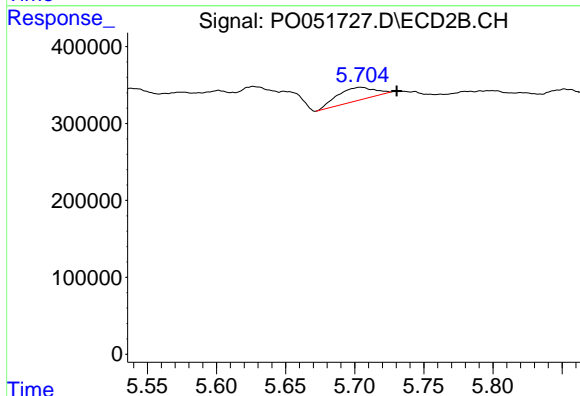
#30 AR-1254-5
 R.T.: 0.000 min
 Exp R.T. : 6.227 min
 Response: 0
 Conc: N.D.



#31 AR-1260-1

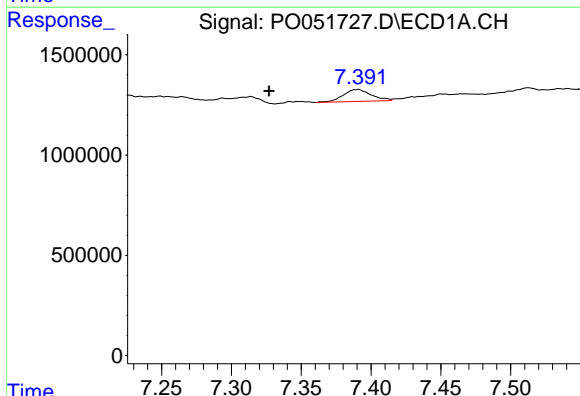
R.T.: 0.000 min
 Exp R.T.: 7.070 min
 Response: 0
 Conc: N.D.

Instrument :
 ECD_O
 ClientSampled :



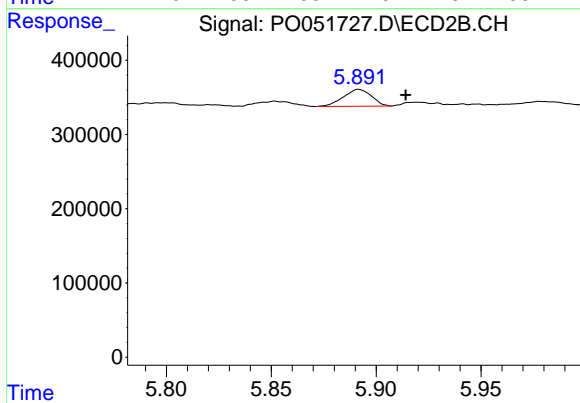
#31 AR-1260-1

R.T.: 5.704 min
 Delta R.T.: -0.026 min
 Response: 321126
 Conc: 23.67 ng/ml



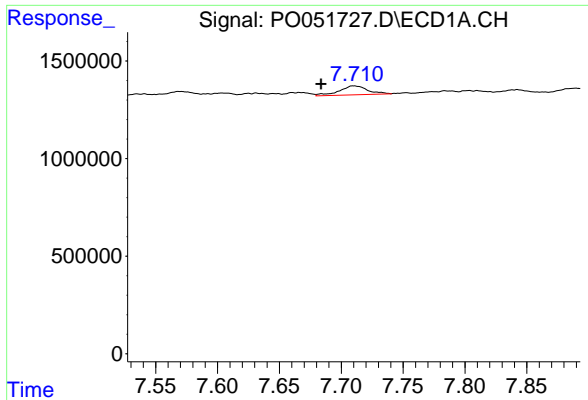
#32 AR-1260-2

R.T.: 7.391 min
 Delta R.T.: 0.064 min
 Response: 833627
 Conc: 19.75 ng/ml



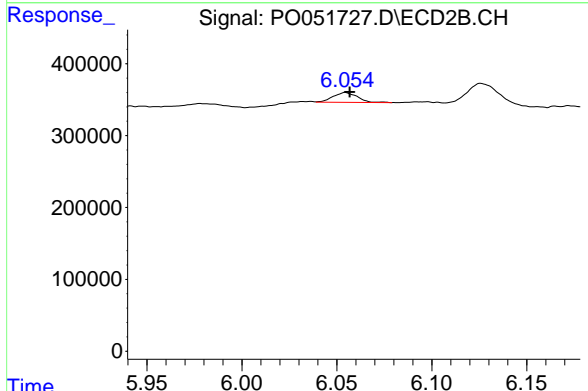
#32 AR-1260-2

R.T.: 5.892 min
 Delta R.T.: -0.023 min
 Response: 211468
 Conc: 12.19 ng/ml

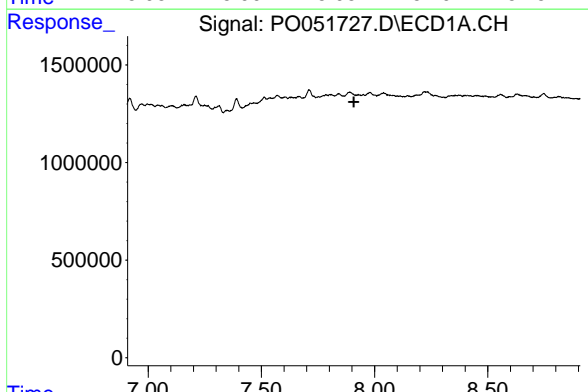


#33 AR-1260-3
 R.T.: 7.710 min
 Delta R.T.: 0.027 min
 Response: 732836
 Conc: 25.22 ng/ml

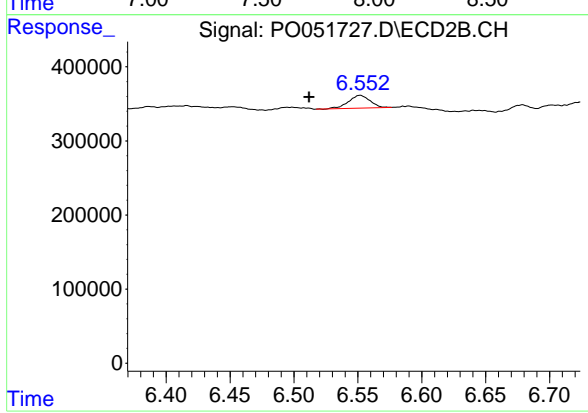
Instrument :
 ECD_O
 ClientSampleId :



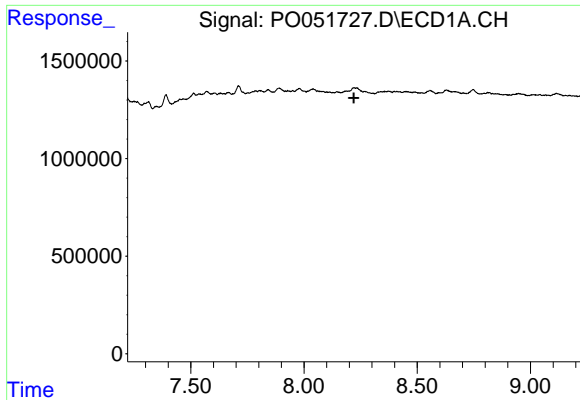
#33 AR-1260-3
 R.T.: 6.055 min
 Delta R.T.: -0.002 min
 Response: 121348
 Conc: 7.92 ng/ml



#34 AR-1260-4
 R.T.: 0.000 min
 Exp R.T. : 7.909 min
 Response: 0
 Conc: N.D.



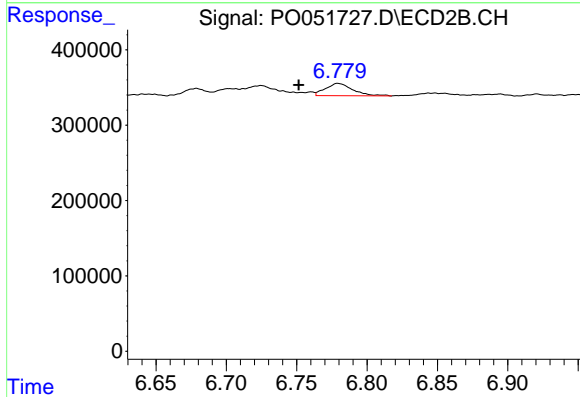
#34 AR-1260-4
 R.T.: 6.552 min
 Delta R.T.: 0.040 min
 Response: 202460
 Conc: 19.92 ng/ml



#35 AR-1260-5

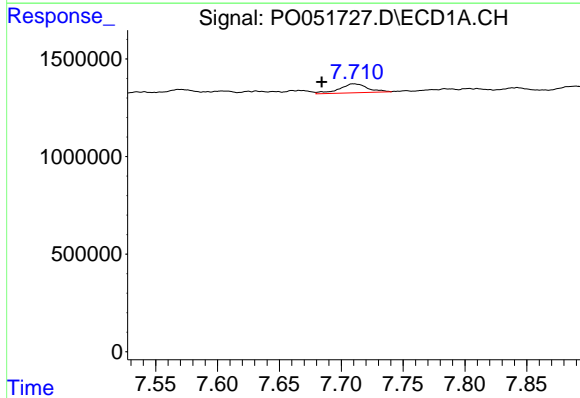
R.T.: 0.000 min
 Exp R.T.: 8.220 min
 Response: 0
 Conc: N.D.

Instrument :
 ECD_O
 ClientSampled :



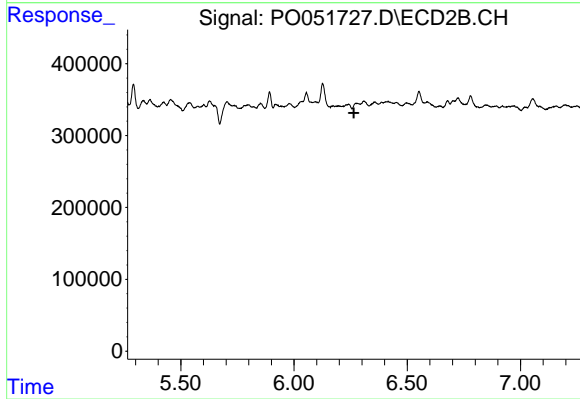
#35 AR-1260-5

R.T.: 6.779 min
 Delta R.T.: 0.028 min
 Response: 222897
 Conc: 8.64 ng/ml



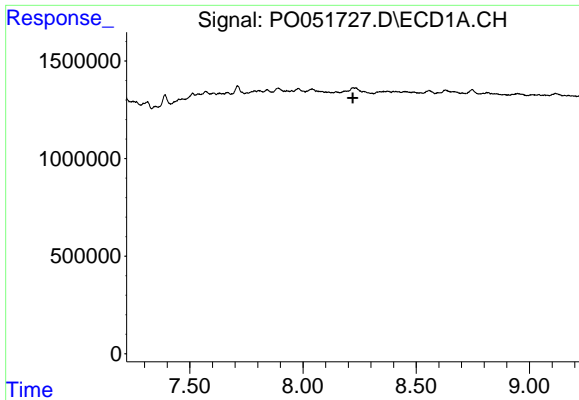
#36 AR-1262-1

R.T.: 7.710 min
 Delta R.T.: 0.026 min
 Response: 732836
 Conc: 15.65 ng/ml



#36 AR-1262-1

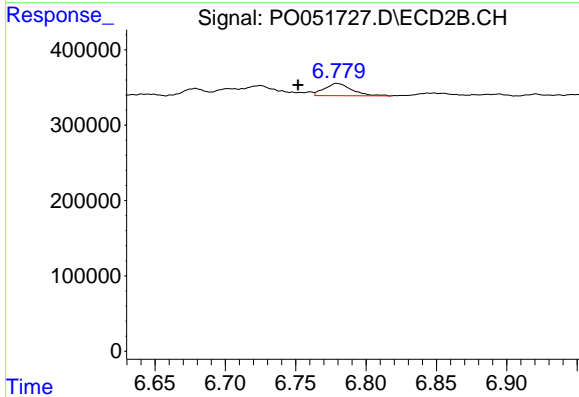
R.T.: 0.000 min
 Exp R.T.: 6.265 min
 Response: 0
 Conc: N.D.



#37 AR-1262-2

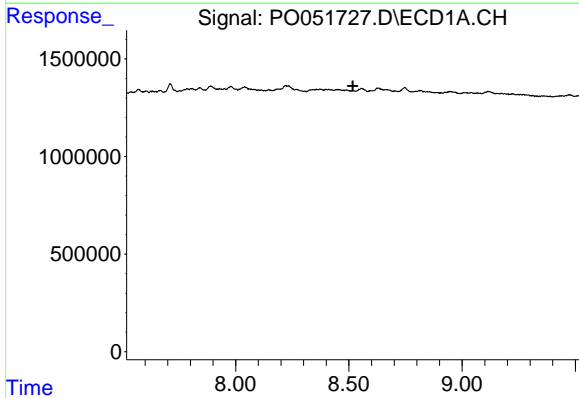
R.T.: 0.000 min
 Exp R.T. : 8.220 min
 Response: 0
 Conc: N.D.

Instrument :
 ECD_O
 ClientSampled :



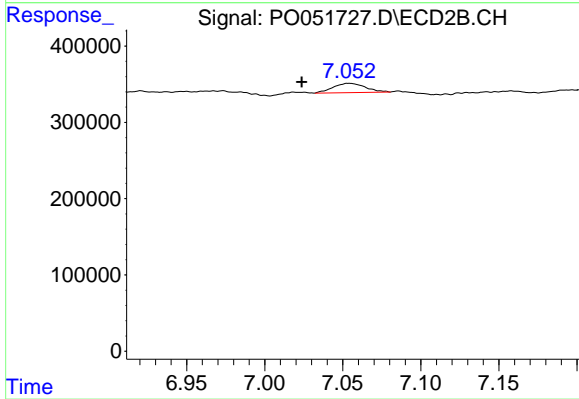
#37 AR-1262-2

R.T.: 6.779 min
 Delta R.T.: 0.028 min
 Response: 222897
 Conc: 7.39 ng/ml



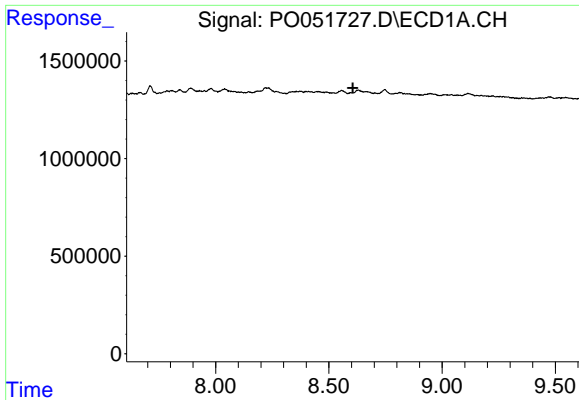
#38 AR-1262-3

R.T.: 0.000 min
 Exp R.T. : 8.518 min
 Response: 0
 Conc: N.D.



#38 AR-1262-3

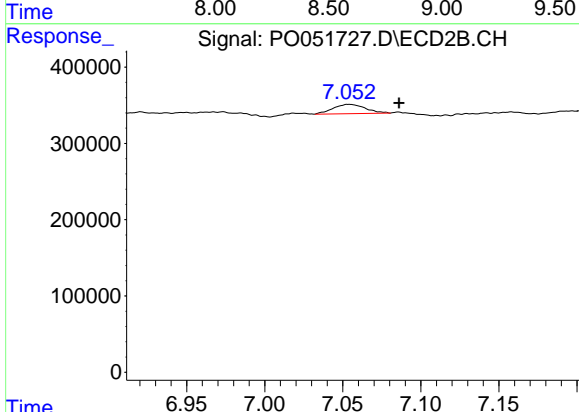
R.T.: 7.053 min
 Delta R.T.: 0.030 min
 Response: 175307
 Conc: 14.05 ng/ml



#39 AR-1262-4

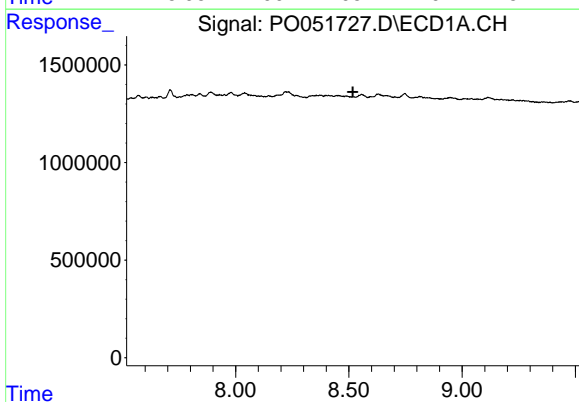
R.T.: 0.000 min
 Exp R.T. : 8.606 min
 Response: 0
 Conc: N.D.

Instrument :
 ECD_O
 ClientSampled :



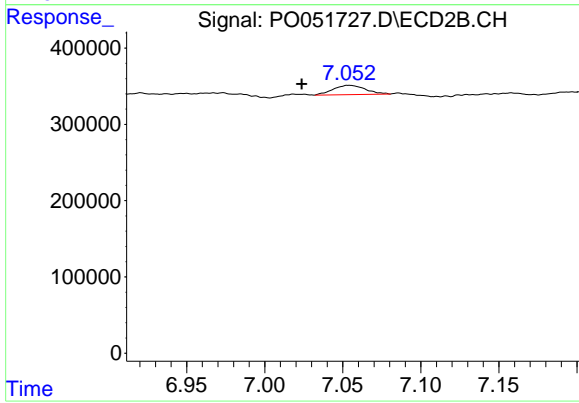
#39 AR-1262-4

R.T.: 7.053 min
 Delta R.T.: -0.033 min
 Response: 175307
 Conc: 8.03 ng/ml



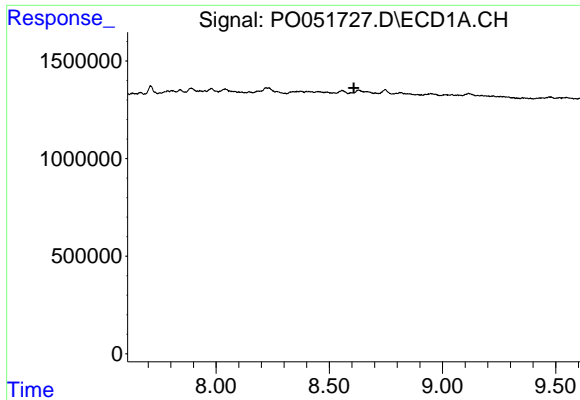
#41 AR-1268-1

R.T.: 0.000 min
 Exp R.T. : 8.518 min
 Response: 0
 Conc: N.D.



#41 AR-1268-1

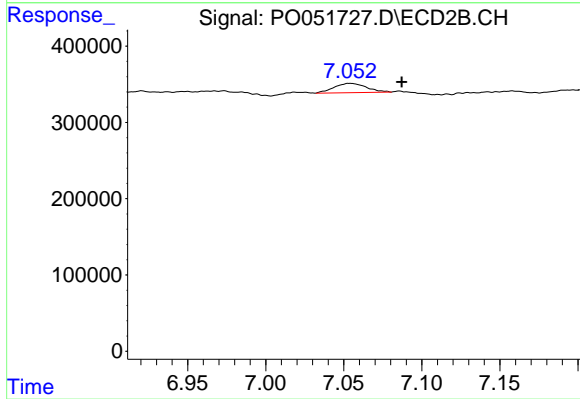
R.T.: 7.053 min
 Delta R.T.: 0.030 min
 Response: 175307
 Conc: 4.44 ng/ml



#42 AR-1268-2

R.T.: 0.000 min
Exp R.T.: 8.608 min
Response: 0
Conc: N.D.

Instrument :
ECD_O
ClientSampleId :



#42 AR-1268-2

R.T.: 7.053 min
Delta R.T.: -0.034 min
Response: 175307
Conc: 4.75 ng/ml