

Data Path : Z:\pestpcbsrv\HPCHEM1\ECD_0\Data\PO112118\
 Data File : PO051728.D
 Signal(s) : Signal #1: ECD1A.CH Signal #2: ECD2B.CH
 Acq On : 21 Nov 2018 19:22
 Operator : SM/SJ
 Sample : J6023-04
 Misc :
 ALS Vial : 22 Sample Multiplier: 1

Instrument :
 ECD_0
 ClientSampled :

Integration File signal 1: autoint1.e
 Integration File signal 2: autoint2.e
 Quant Time: Nov 21 23:56:41 2018
 Quant Method : Z:\pestpcbsrv\HPCHEM1\ECD_0\methods\PO112018.M
 Quant Title : GC EXTRACTABLES
 QLast Update : Wed Nov 21 00:55:28 2018
 Response via : Initial Calibration
 Integrator: ChemStation 6890 Scale Mode: Small noise peaks clipped

Volume Inj. : 2 µl
 Signal #1 Phase : ZB-MR1 Signal #2 Phase: ZB-MR2
 Signal #1 Info : 30Mx0.32mmx 0.50µ Signal #2 Info : 30M x 0.32mm x 0.25µm

Compound	RT#1	RT#2	Resp#1	Resp#2	ng/ml	ng/ml

System Monitoring Compounds						
1) SA Tetrachlo...	4.311	3.312	19340586	5782794	25.692	24.159
2) SA Decachlor...	9.929	8.039	14106070	6677465	30.408	30.889
Target Compounds						
5) L1 AR-1016-3	0.000	4.502	0	155528	N.D.	25.474 #
6) L1 AR-1016-4	0.000	4.502	0	155528	N.D.	29.310 #
7) L1 AR-1016-5	0.000	4.687	0	133778	N.D.	20.499 #
8) L2 AR-1221-1	4.590	3.485	4099027	81064	576.527	36.045 #
9) L2 AR-1221-2	4.590	0.000	4099027	0	782.314	N.D. #
10) L2 AR-1221-3	4.699	3.684	3975312	1183198	241.153	215.308
11) L3 AR-1232-1	4.699	3.684	3975312	1183198	299.348	255.530
12) L3 AR-1232-2	5.269	0.000	1236377	0	170.213	N.D. #
13) L3 AR-1232-3	0.000	4.502	0	155528	N.D.	59.501 #
14) L3 AR-1232-4	0.000	4.634	0	556108	N.D.	252.312 #
15) L3 AR-1232-5	5.734	4.687	853215	133778	172.616	52.849 #
18) L4 AR-1242-3	0.000	4.502	0	155528	N.D.	31.356 #
19) L4 AR-1242-4	0.000	4.634	0	556108	N.D.	117.358 #
20) L4 AR-1242-5	6.369	5.085	585978	104046	43.842	17.261 #
22) L5 AR-1248-2	5.734	4.502	853215	155528	40.134	19.711 #
23) L5 AR-1248-3	0.000	4.634	0	556108	N.D.	70.935 #
24) L5 AR-1248-4	6.369	4.687	585978	133778	22.171	13.789 #
25) L5 AR-1248-5	6.369	5.113	585978	27663	23.367	2.930 #
26) L6 AR-1254-1	6.289	5.085	985617	104046	39.907	7.568 #
27) L6 AR-1254-2	6.562	5.290	773078	302590	19.850	25.354 #
28) L6 AR-1254-3	6.920	5.541	1107997	188444	27.485	10.030 #
29) L6 AR-1254-4	7.209	5.892	678813	288171	21.763	25.265
31) L7 AR-1260-1	0.000	5.726	0	48010	N.D.	3.539 #
32) L7 AR-1260-2	7.390	5.892	444787	288171	10.536	16.606 #
33) L7 AR-1260-3	0.000	6.055	0	176550	N.D.	11.526 #
34) L7 AR-1260-4	7.841	0.000	478283	0	17.391	N.D. #
38) L8 AR-1262-3	0.000	7.054	0	137425	N.D.	11.011 #
39) L8 AR-1262-4	0.000	7.054	0	137425	N.D.	6.297 #
41) L9 AR-1268-1	0.000	7.054	0	137425	N.D.	3.481 #
42) L9 AR-1268-2	0.000	7.054	0	137425	N.D.	3.724 #

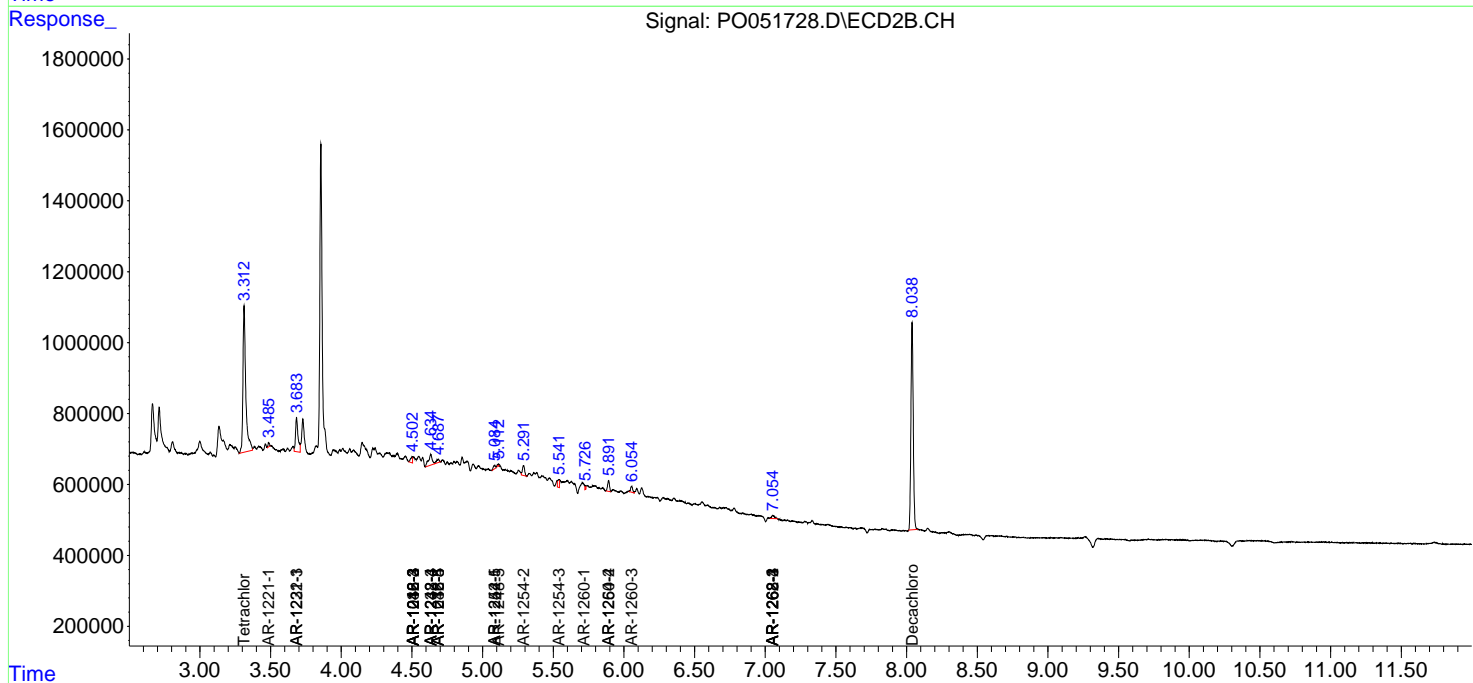
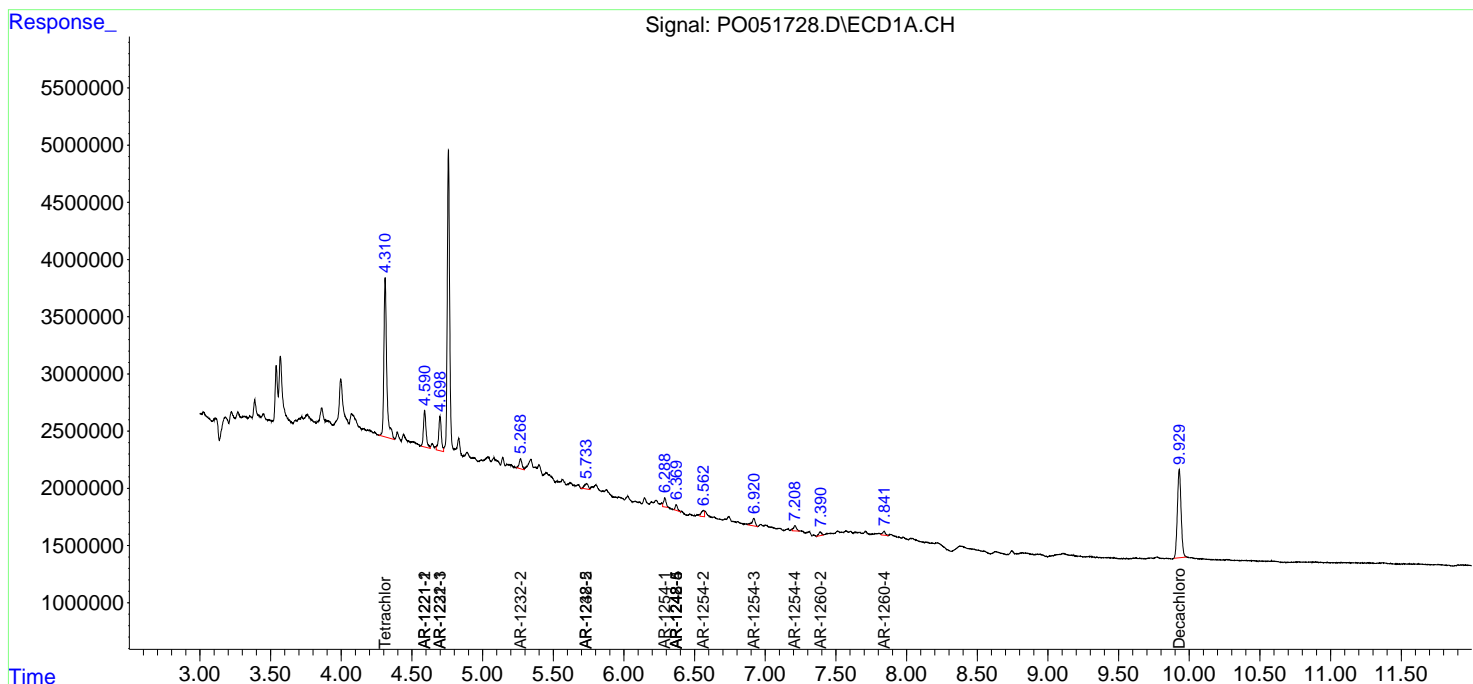
(f)=RT Delta > 1/2 Window (#)=Amounts differ by > 25% (m)=manual int.

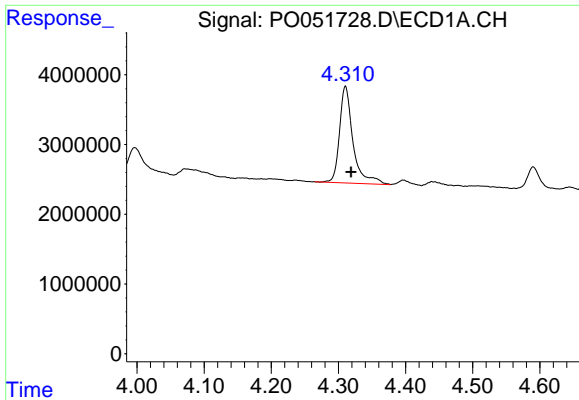
Data Path : Z:\pestpcbsrv\HPCHEM1\ECD_O\Data\PO112118\
 Data File : PO051728.D
 Signal(s) : Signal #1: ECD1A.CH Signal #2: ECD2B.CH
 Acq On : 21 Nov 2018 19:22
 Operator : SM/SJ
 Sample : J6023-04
 Misc :
 ALS Vial : 22 Sample Multiplier: 1

Instrument :
 ECD_O
 ClientSampled :

Integration File signal 1: autoint1.e
 Integration File signal 2: autoint2.e
 Quant Time: Nov 21 23:56:41 2018
 Quant Method : Z:\pestpcbsrv\HPCHEM1\ECD_O\methods\PO112018.M
 Quant Title : GC EXTRACTABLES
 QLast Update : Wed Nov 21 00:55:28 2018
 Response via : Initial Calibration
 Integrator: ChemStation 6890 Scale Mode: Small noise peaks clipped

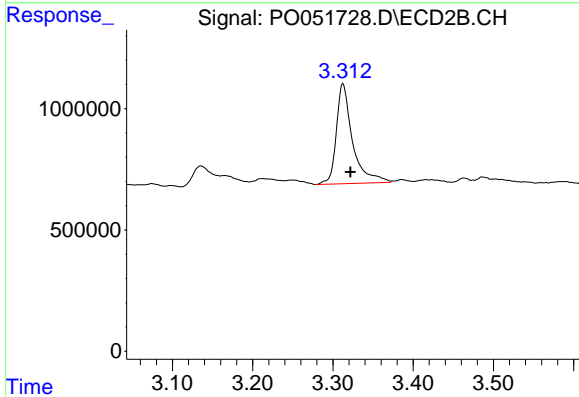
Volume Inj. : 2 µl
 Signal #1 Phase : ZB-MR1 Signal #2 Phase: ZB-MR2
 Signal #1 Info : 30Mx0.32mmx 0.50µ Signal #2 Info : 30M x 0.32mm x 0.25µm



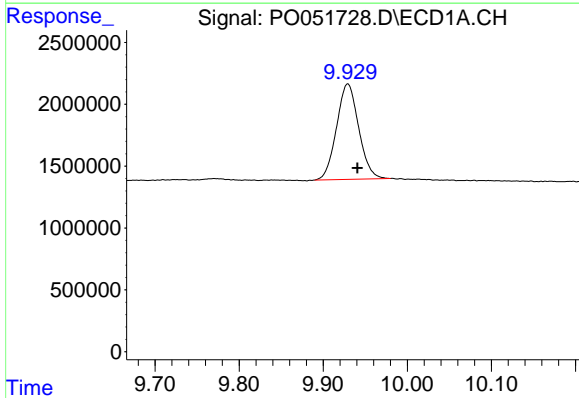


#1 Tetrachloro-m-xylene
R.T.: 4.311 min
Delta R.T.: -0.008 min
Response: 19340586
Conc: 25.69 ng/ml

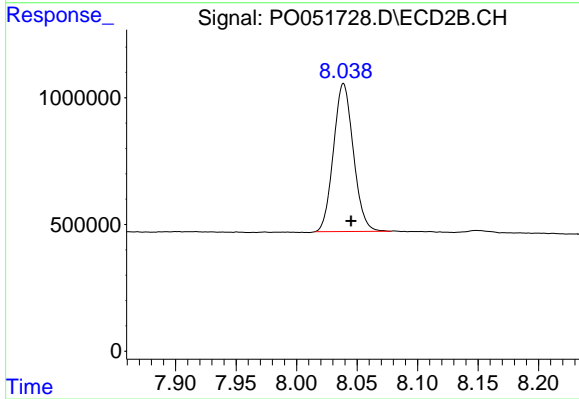
Instrument :
ECD_O
ClientSampleId :



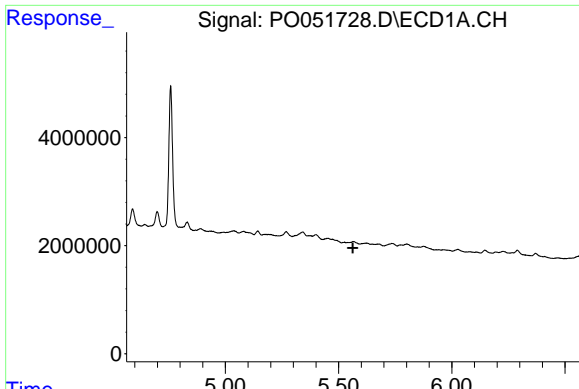
#1 Tetrachloro-m-xylene
R.T.: 3.312 min
Delta R.T.: -0.009 min
Response: 5782794
Conc: 24.16 ng/ml



#2 Decachlorobiphenyl
R.T.: 9.929 min
Delta R.T.: -0.011 min
Response: 14106070
Conc: 30.41 ng/ml



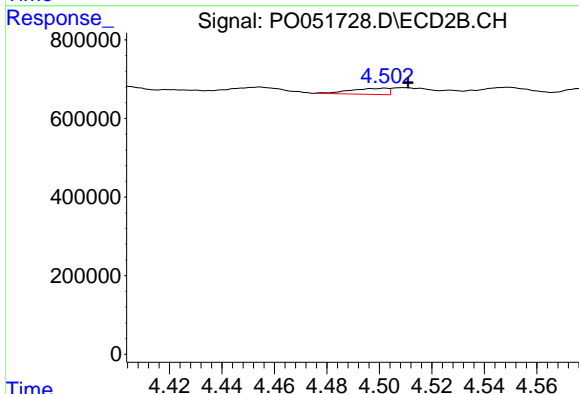
#2 Decachlorobiphenyl
R.T.: 8.039 min
Delta R.T.: -0.006 min
Response: 6677465
Conc: 30.89 ng/ml



#5 AR-1016-3

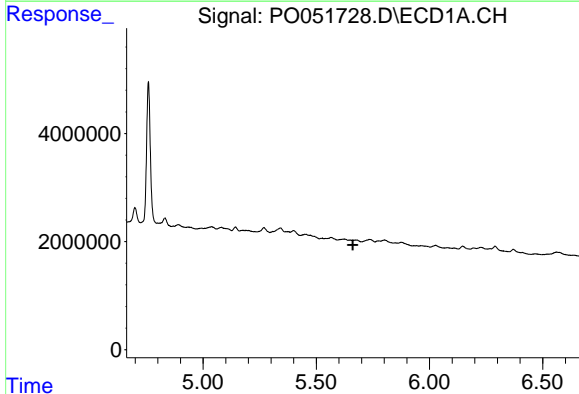
R.T.: 0.000 min
 Exp R.T. : 5.563 min
 Response: 0
 Conc: N.D.

Instrument :
 ECD_O
 ClientSampled :



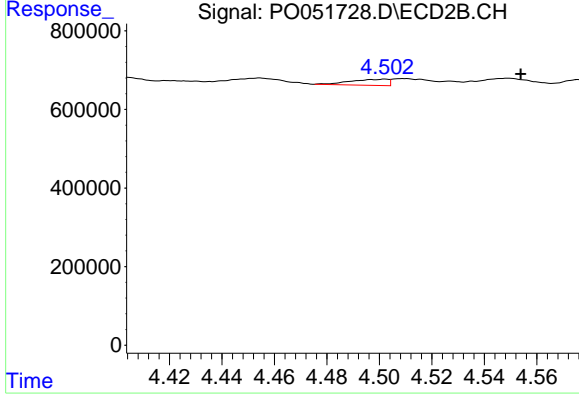
#5 AR-1016-3

R.T.: 4.502 min
 Delta R.T.: -0.009 min
 Response: 155528
 Conc: 25.47 ng/ml



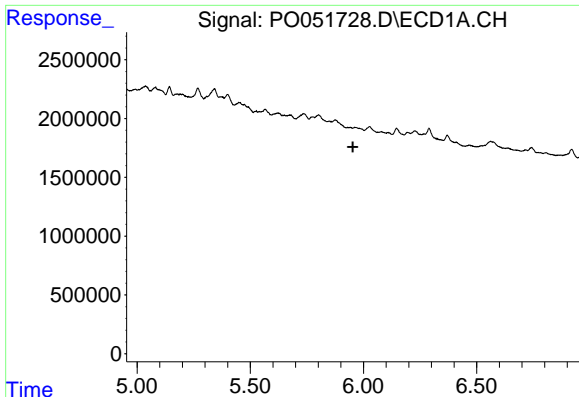
#6 AR-1016-4

R.T.: 0.000 min
 Exp R.T. : 5.662 min
 Response: 0
 Conc: N.D.



#6 AR-1016-4

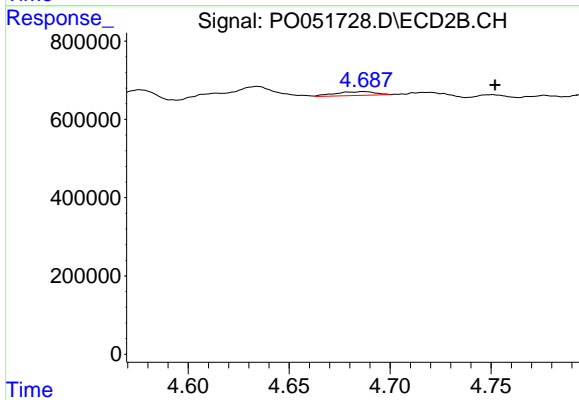
R.T.: 4.502 min
 Delta R.T.: -0.052 min
 Response: 155528
 Conc: 29.31 ng/ml



#7 AR-1016-5

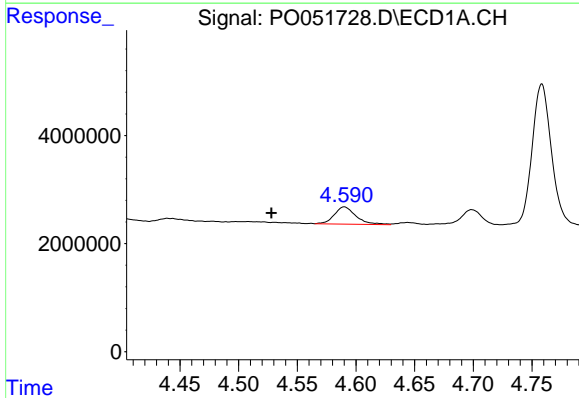
R.T.: 0.000 min
 Exp R.T.: 5.953 min
 Response: 0
 Conc: N.D.

Instrument :
 ECD_O
 ClientSampleId :



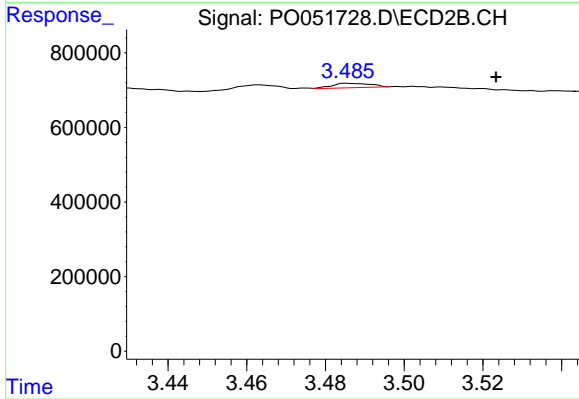
#7 AR-1016-5

R.T.: 4.687 min
 Delta R.T.: -0.065 min
 Response: 133778
 Conc: 20.50 ng/ml



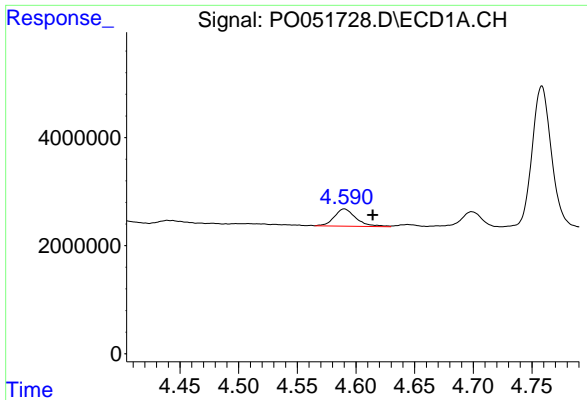
#8 AR-1221-1

R.T.: 4.590 min
 Delta R.T.: 0.062 min
 Response: 4099027
 Conc: 576.53 ng/ml



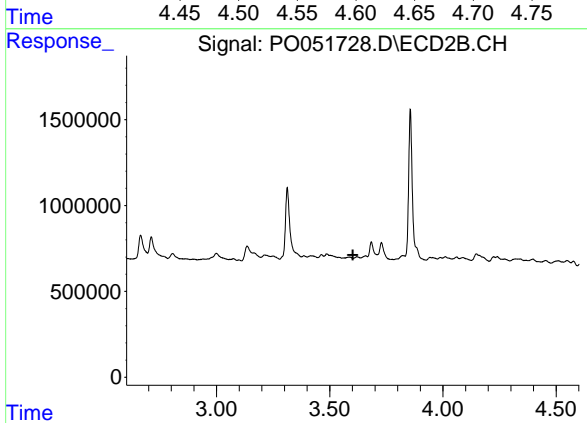
#8 AR-1221-1

R.T.: 3.485 min
 Delta R.T.: -0.038 min
 Response: 81064
 Conc: 36.04 ng/ml

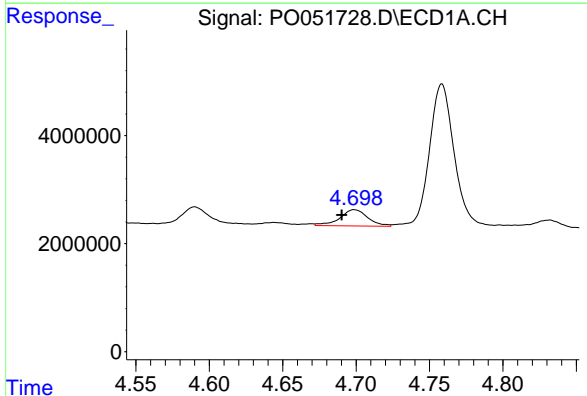


#9 AR-1221-2
 R.T.: 4.590 min
 Delta R.T.: -0.024 min
 Response: 4099027
 Conc: 782.31 ng/ml

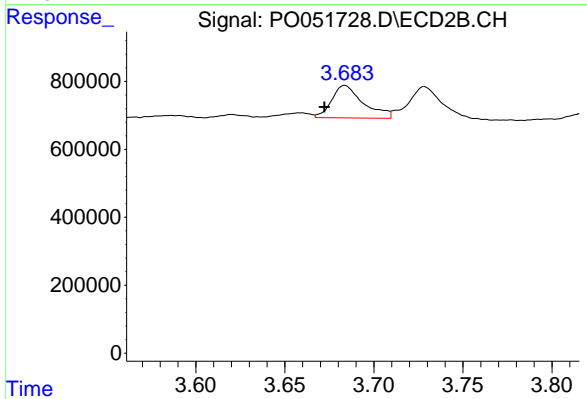
Instrument :
 ECD_O
 ClientSampleId :



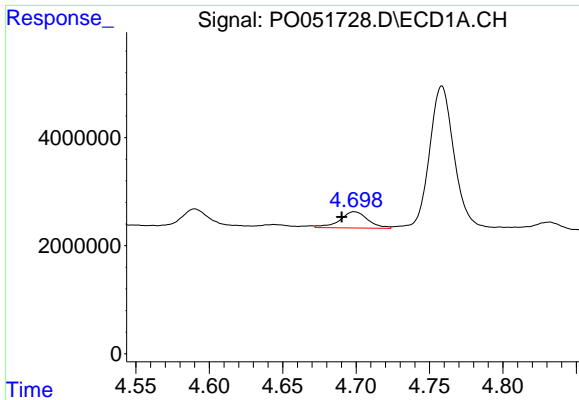
#9 AR-1221-2
 R.T.: 0.000 min
 Exp R.T. : 3.603 min
 Response: 0
 Conc: N.D.



#10 AR-1221-3
 R.T.: 4.699 min
 Delta R.T.: 0.008 min
 Response: 3975312
 Conc: 241.15 ng/ml

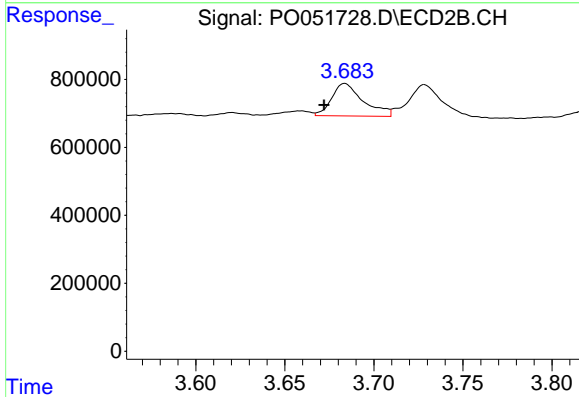


#10 AR-1221-3
 R.T.: 3.684 min
 Delta R.T.: 0.012 min
 Response: 1183198
 Conc: 215.31 ng/ml

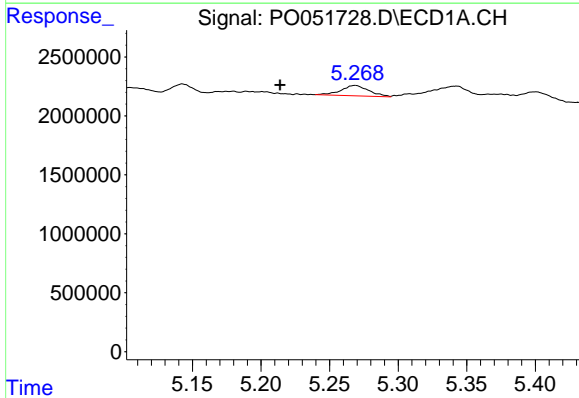


#11 AR-1232-1
 R.T.: 4.699 min
 Delta R.T.: 0.008 min
 Response: 3975312
 Conc: 299.35 ng/ml

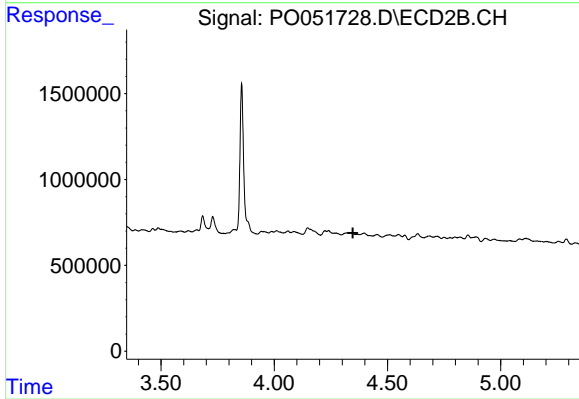
Instrument :
 ECD_O
 ClientSampleId :



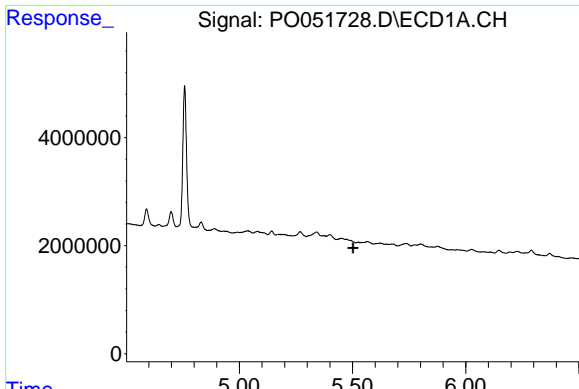
#11 AR-1232-1
 R.T.: 3.684 min
 Delta R.T.: 0.012 min
 Response: 1183198
 Conc: 255.53 ng/ml



#12 AR-1232-2
 R.T.: 5.269 min
 Delta R.T.: 0.055 min
 Response: 1236377
 Conc: 170.21 ng/ml



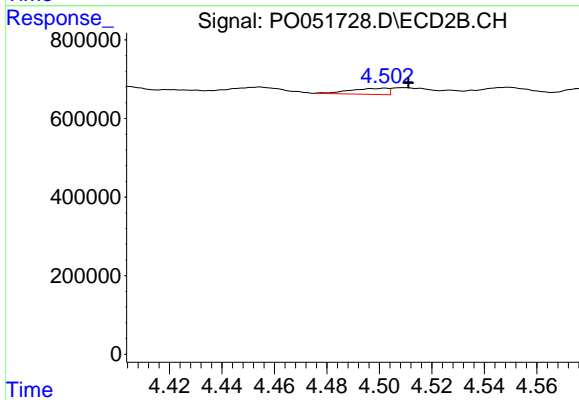
#12 AR-1232-2
 R.T.: 0.000 min
 Exp R.T. : 4.347 min
 Response: 0
 Conc: N.D.



#13 AR-1232-3

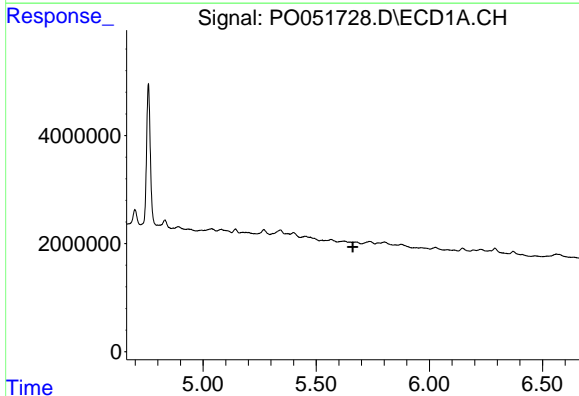
R.T.: 0.000 min
 Exp R.T. : 5.502 min
 Response: 0
 Conc: N.D.

Instrument :
 ECD_O
 ClientSampleId :



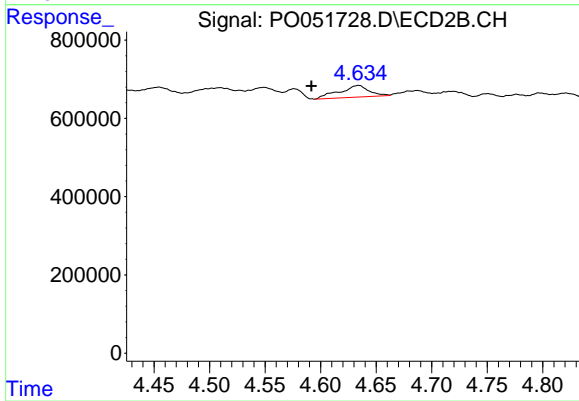
#13 AR-1232-3

R.T.: 4.502 min
 Delta R.T.: -0.009 min
 Response: 155528
 Conc: 59.50 ng/ml



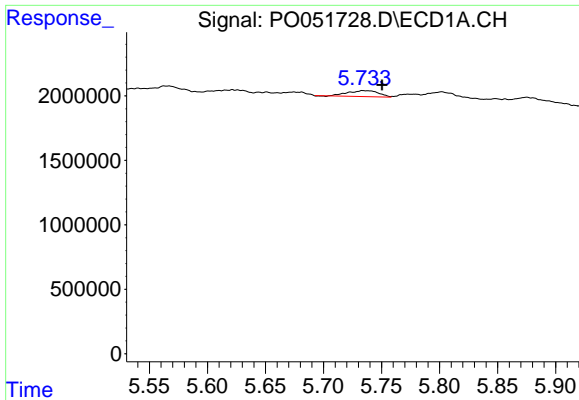
#14 AR-1232-4

R.T.: 0.000 min
 Exp R.T. : 5.662 min
 Response: 0
 Conc: N.D.



#14 AR-1232-4

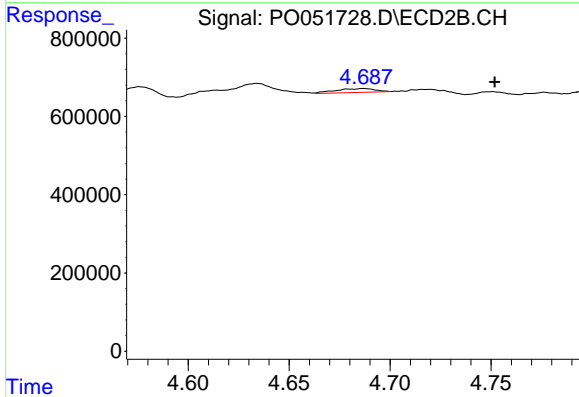
R.T.: 4.634 min
 Delta R.T.: 0.042 min
 Response: 556108
 Conc: 252.31 ng/ml



#15 AR-1232-5

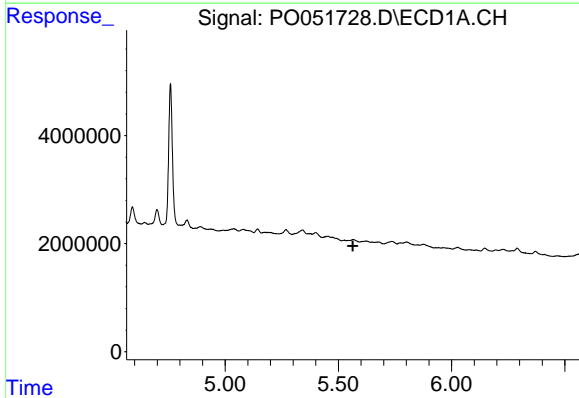
R.T.: 5.734 min
 Delta R.T.: -0.017 min
 Response: 853215
 Conc: 172.62 ng/ml

Instrument :
 ECD_O
 ClientSampled :



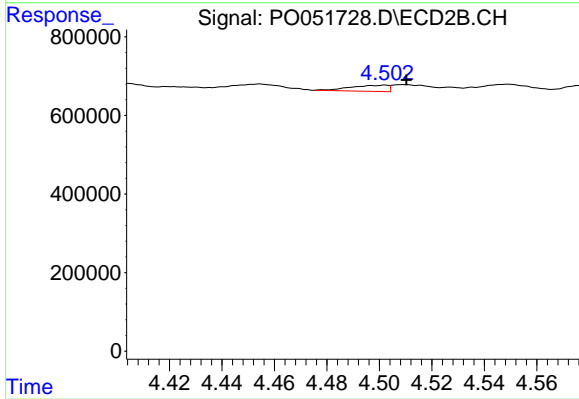
#15 AR-1232-5

R.T.: 4.687 min
 Delta R.T.: -0.065 min
 Response: 133778
 Conc: 52.85 ng/ml



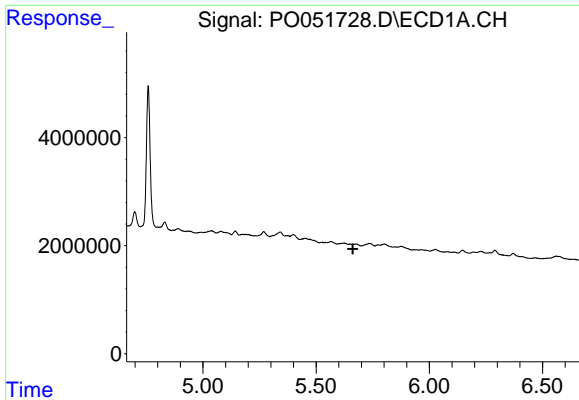
#18 AR-1242-3

R.T.: 0.000 min
 Exp R.T. : 5.564 min
 Response: 0
 Conc: N.D.



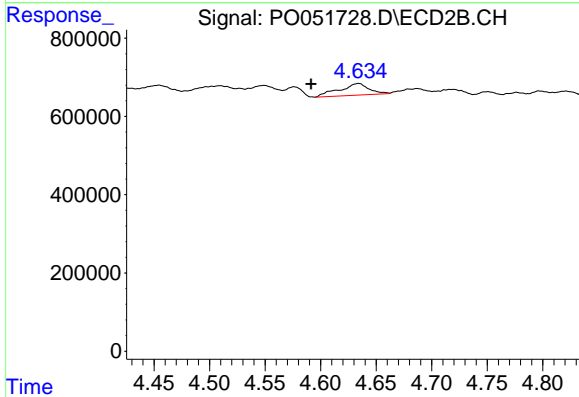
#18 AR-1242-3

R.T.: 4.502 min
 Delta R.T.: -0.008 min
 Response: 155528
 Conc: 31.36 ng/ml

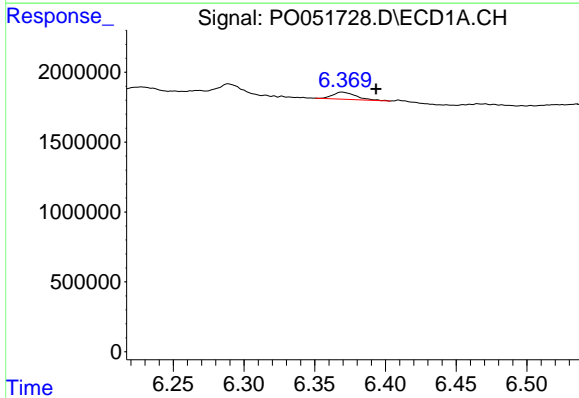


#19 AR-1242-4
 R.T.: 0.000 min
 Exp R.T.: 5.662 min
 Response: 0
 Conc: N.D.

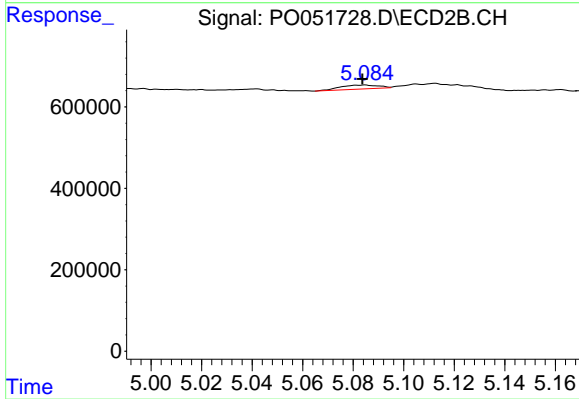
Instrument :
 ECD_O
 ClientSampled :



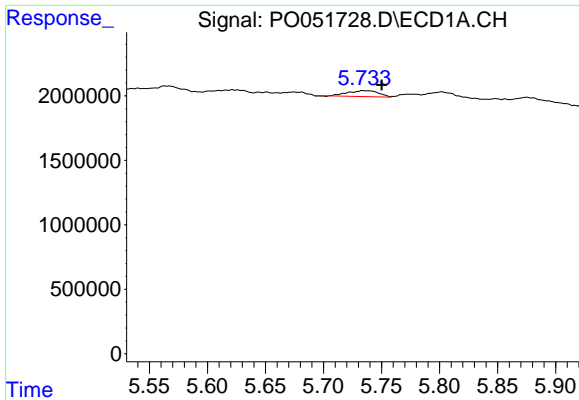
#19 AR-1242-4
 R.T.: 4.634 min
 Delta R.T.: 0.043 min
 Response: 556108
 Conc: 117.36 ng/ml



#20 AR-1242-5
 R.T.: 6.369 min
 Delta R.T.: -0.024 min
 Response: 585978
 Conc: 43.84 ng/ml



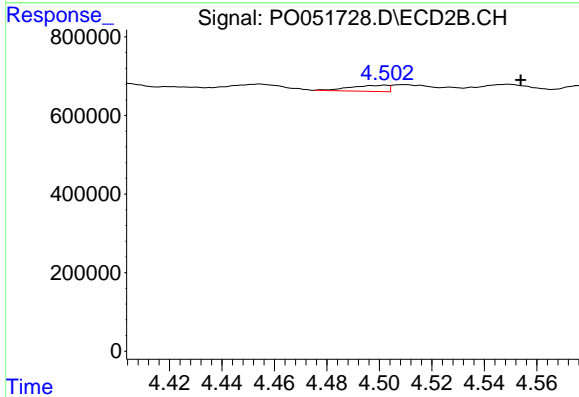
#20 AR-1242-5
 R.T.: 5.085 min
 Delta R.T.: 0.001 min
 Response: 104046
 Conc: 17.26 ng/ml



#22 AR-1248-2

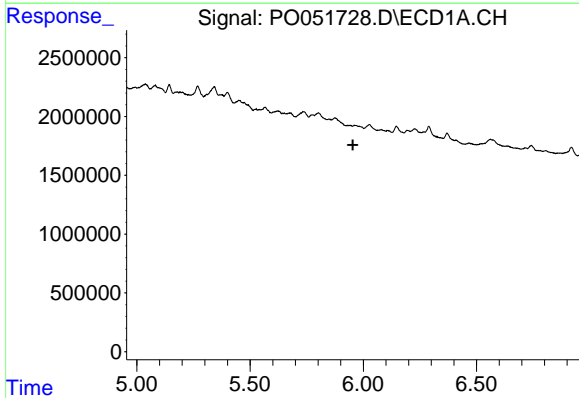
R.T.: 5.734 min
 Delta R.T.: -0.017 min
 Response: 853215
 Conc: 40.13 ng/ml

Instrument :
 ECD_O
 ClientSampled :



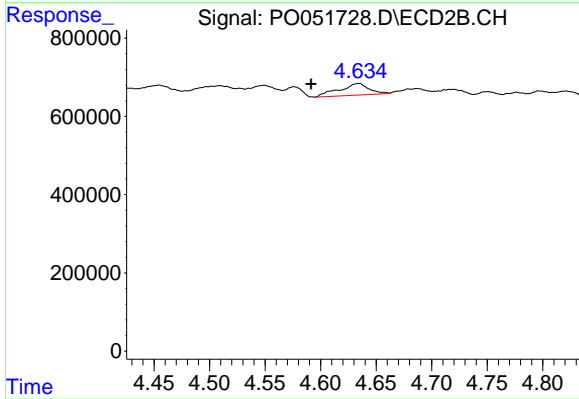
#22 AR-1248-2

R.T.: 4.502 min
 Delta R.T.: -0.052 min
 Response: 155528
 Conc: 19.71 ng/ml



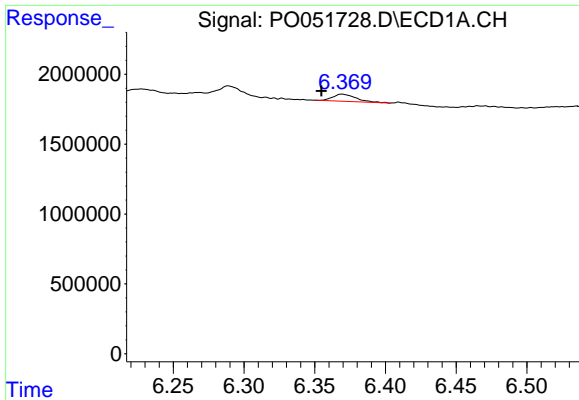
#23 AR-1248-3

R.T.: 0.000 min
 Exp R.T. : 5.954 min
 Response: 0
 Conc: N.D.



#23 AR-1248-3

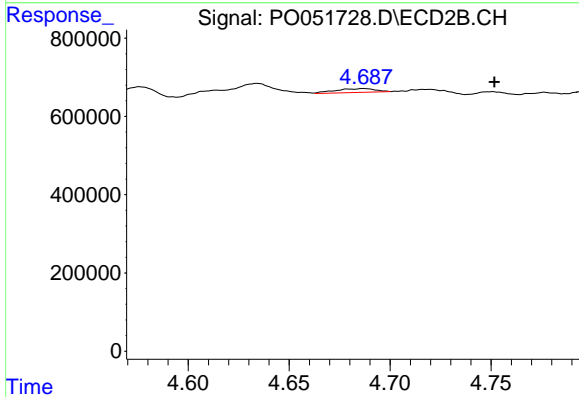
R.T.: 4.634 min
 Delta R.T.: 0.043 min
 Response: 556108
 Conc: 70.94 ng/ml



#24 AR-1248-4

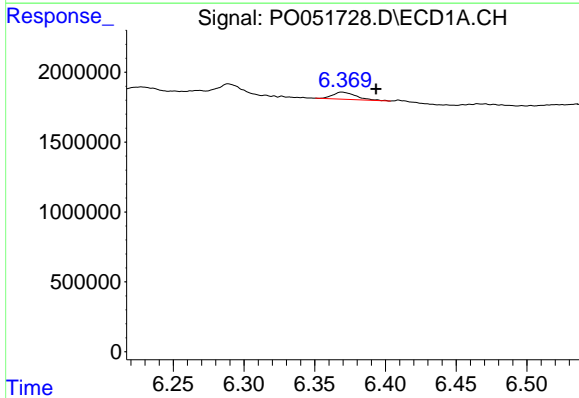
R.T.: 6.369 min
 Delta R.T.: 0.014 min
 Response: 585978
 Conc: 22.17 ng/ml

Instrument :
 ECD_O
 ClientSampleId :



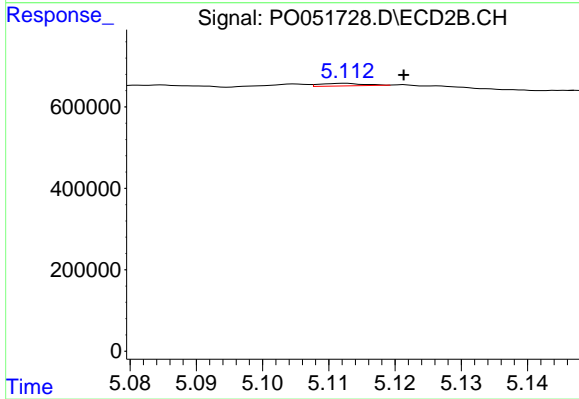
#24 AR-1248-4

R.T.: 4.687 min
 Delta R.T.: -0.065 min
 Response: 133778
 Conc: 13.79 ng/ml



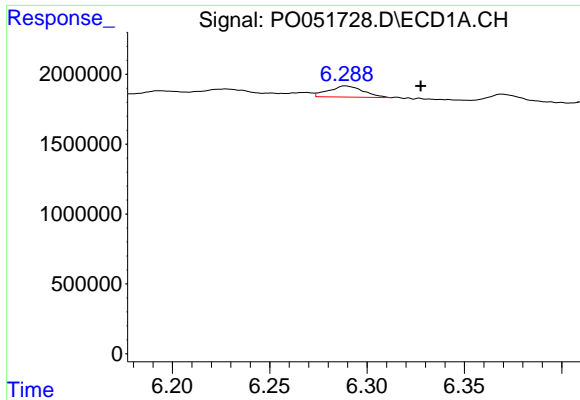
#25 AR-1248-5

R.T.: 6.369 min
 Delta R.T.: -0.024 min
 Response: 585978
 Conc: 23.37 ng/ml



#25 AR-1248-5

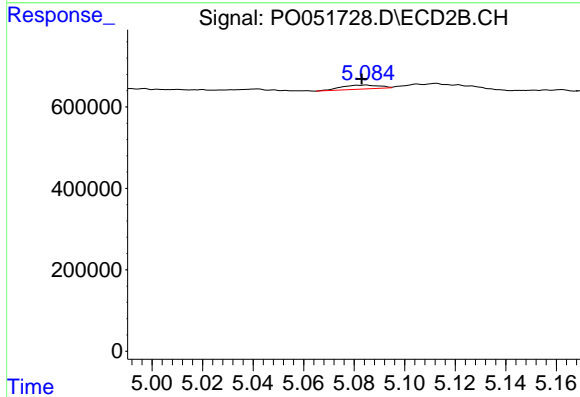
R.T.: 5.113 min
 Delta R.T.: -0.009 min
 Response: 27663
 Conc: 2.93 ng/ml



#26 AR-1254-1

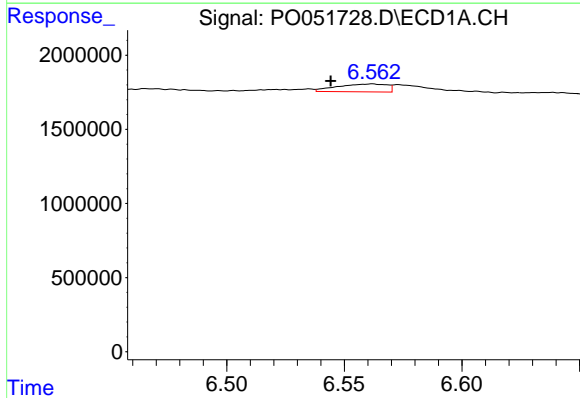
R.T.: 6.289 min
 Delta R.T.: -0.039 min
 Response: 985617
 Conc: 39.91 ng/ml

Instrument :
 ECD_O
 ClientSampleId :



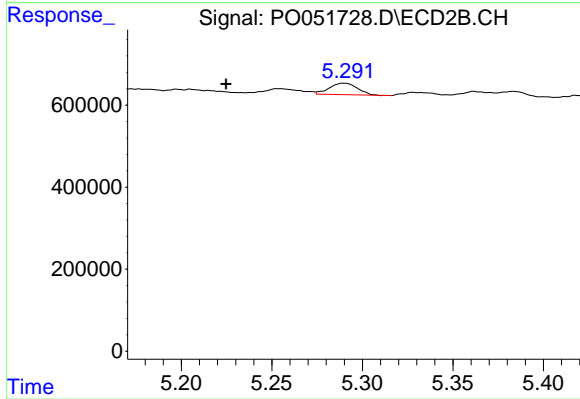
#26 AR-1254-1

R.T.: 5.085 min
 Delta R.T.: 0.002 min
 Response: 104046
 Conc: 7.57 ng/ml



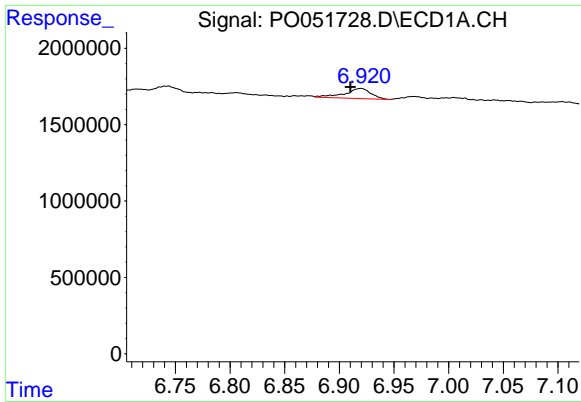
#27 AR-1254-2

R.T.: 6.562 min
 Delta R.T.: 0.018 min
 Response: 773078
 Conc: 19.85 ng/ml



#27 AR-1254-2

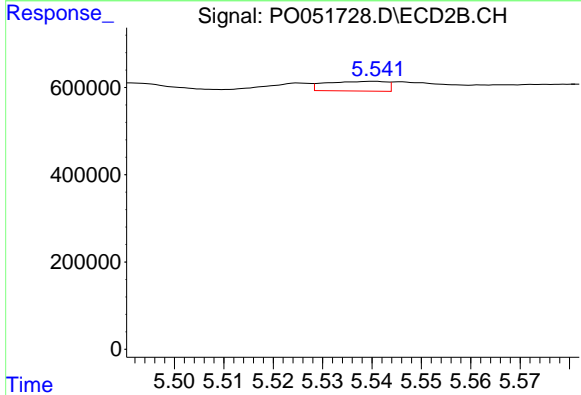
R.T.: 5.290 min
 Delta R.T.: 0.065 min
 Response: 302590
 Conc: 25.35 ng/ml



#28 AR-1254-3

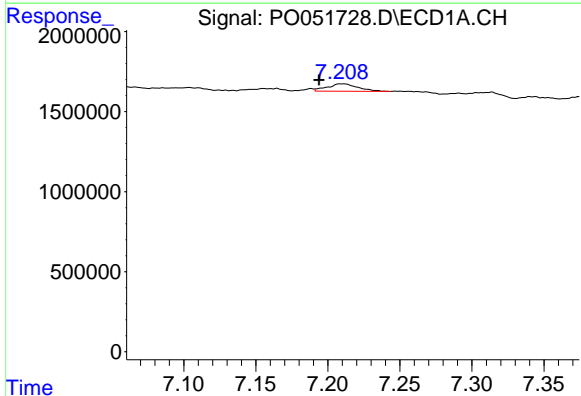
R.T.: 6.920 min
 Delta R.T.: 0.010 min
 Response: 1107997
 Conc: 27.49 ng/ml

Instrument :
 ECD_O
 ClientSampled :



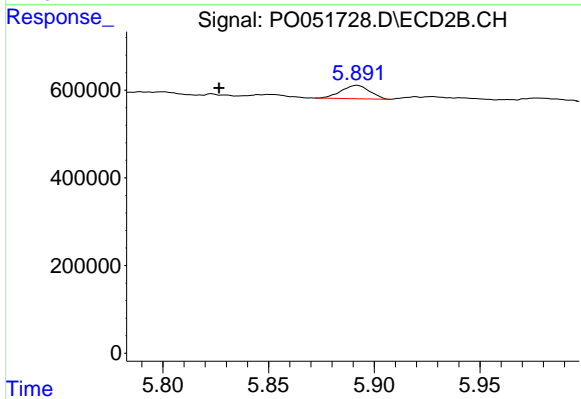
#28 AR-1254-3

R.T.: 5.541 min
 Delta R.T.: -0.065 min
 Response: 188444
 Conc: 10.03 ng/ml



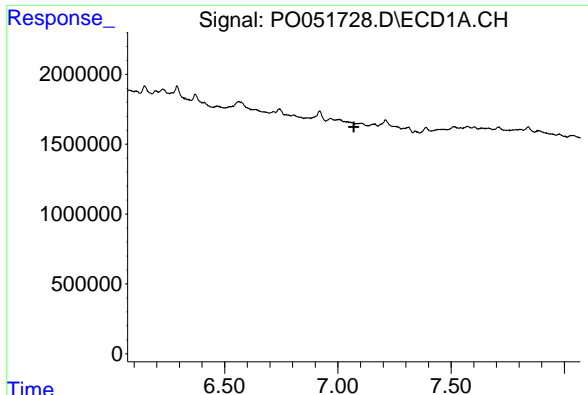
#29 AR-1254-4

R.T.: 7.209 min
 Delta R.T.: 0.015 min
 Response: 678813
 Conc: 21.76 ng/ml



#29 AR-1254-4

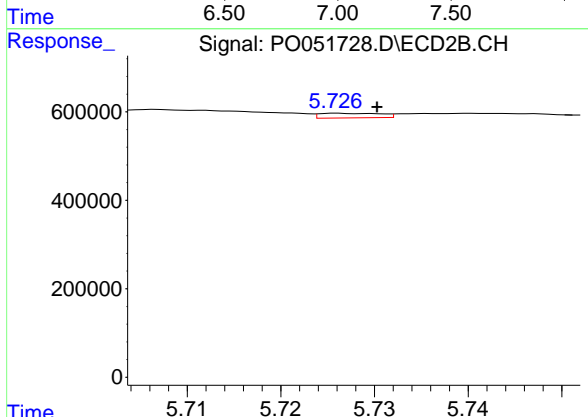
R.T.: 5.892 min
 Delta R.T.: 0.065 min
 Response: 288171
 Conc: 25.27 ng/ml



#31 AR-1260-1

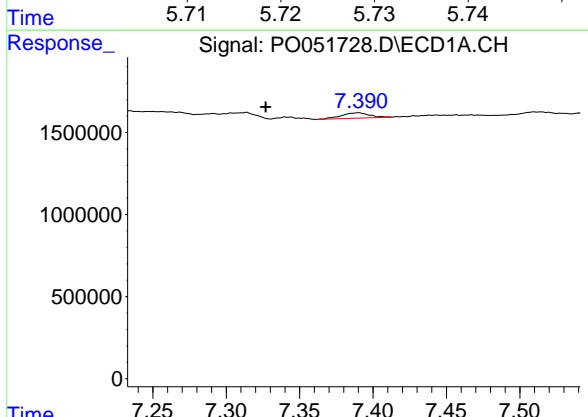
R.T.: 0.000 min
 Exp R.T.: 7.070 min
 Response: 0
 Conc: N.D.

Instrument :
 ECD_O
 ClientSampled :



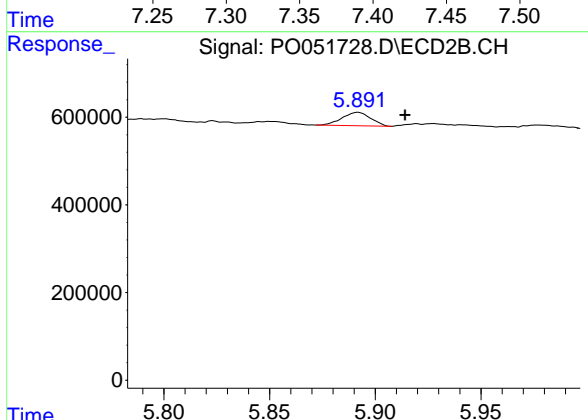
#31 AR-1260-1

R.T.: 5.726 min
 Delta R.T.: -0.004 min
 Response: 48010
 Conc: 3.54 ng/ml



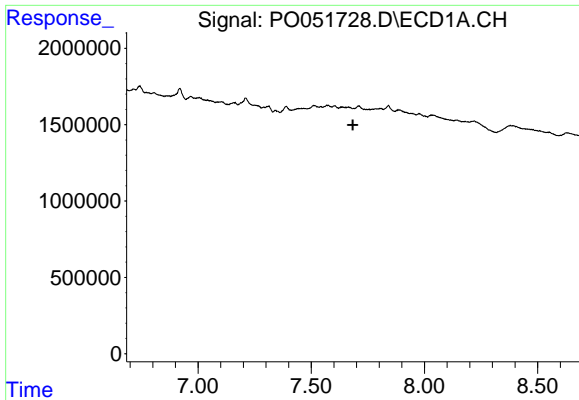
#32 AR-1260-2

R.T.: 7.390 min
 Delta R.T.: 0.063 min
 Response: 444787
 Conc: 10.54 ng/ml



#32 AR-1260-2

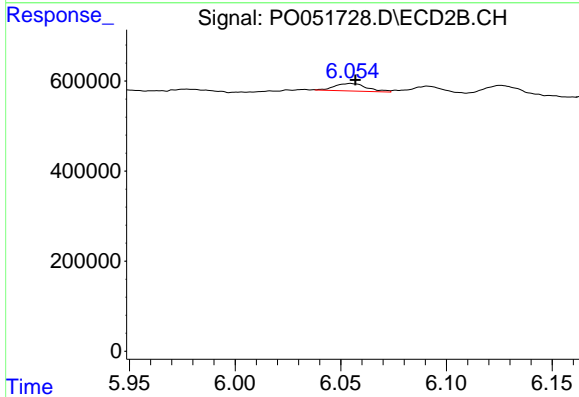
R.T.: 5.892 min
 Delta R.T.: -0.022 min
 Response: 288171
 Conc: 16.61 ng/ml



#33 AR-1260-3

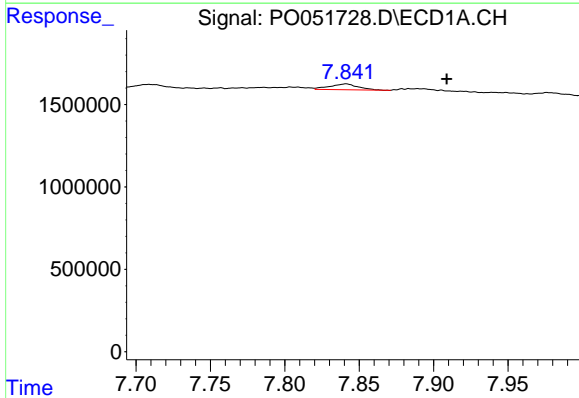
R.T.: 0.000 min
 Exp R.T.: 7.684 min
 Response: 0
 Conc: N.D.

Instrument :
 ECD_O
 ClientSampled :



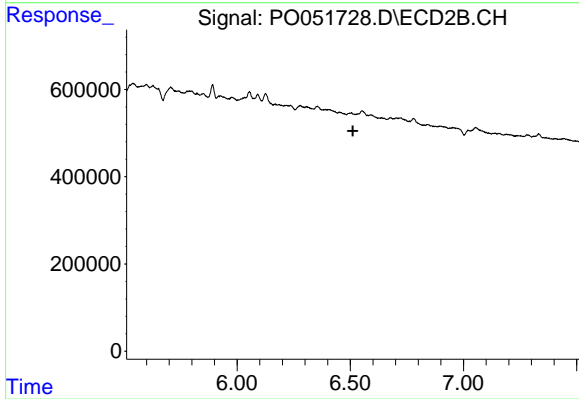
#33 AR-1260-3

R.T.: 6.055 min
 Delta R.T.: -0.002 min
 Response: 176550
 Conc: 11.53 ng/ml



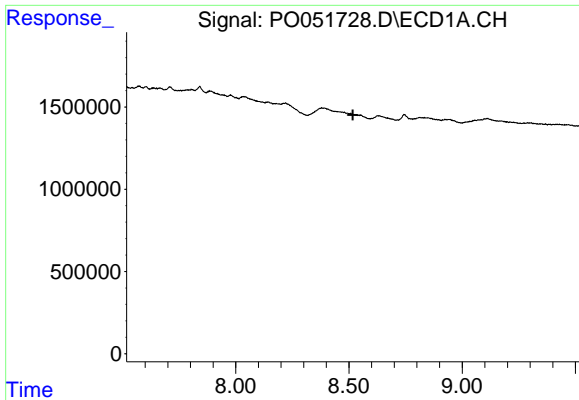
#34 AR-1260-4

R.T.: 7.841 min
 Delta R.T.: -0.067 min
 Response: 478283
 Conc: 17.39 ng/ml



#34 AR-1260-4

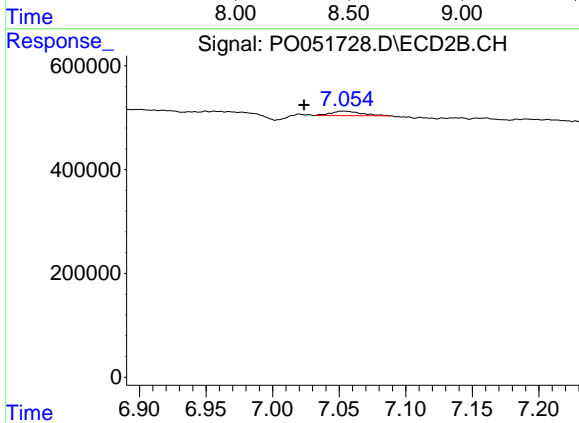
R.T.: 0.000 min
 Exp R.T.: 6.512 min
 Response: 0
 Conc: N.D.



#38 AR-1262-3

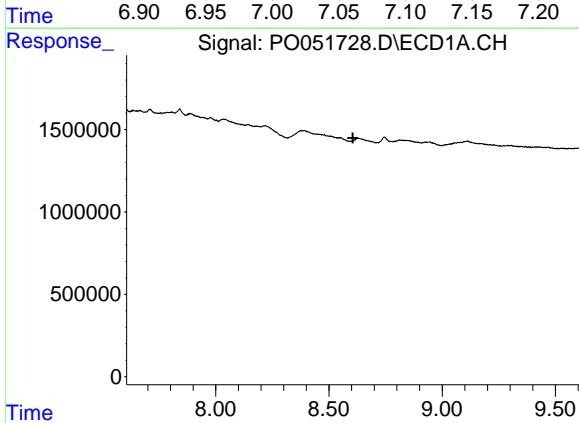
R.T.: 0.000 min
 Exp R.T. : 8.518 min
 Response: 0
 Conc: N.D.

Instrument :
 ECD_O
 ClientSampled :



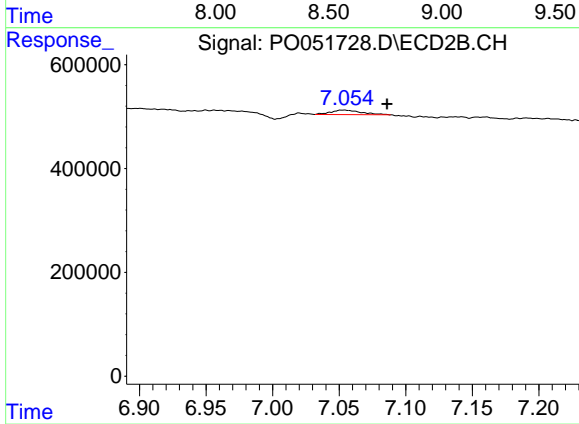
#38 AR-1262-3

R.T.: 7.054 min
 Delta R.T.: 0.030 min
 Response: 137425
 Conc: 11.01 ng/ml



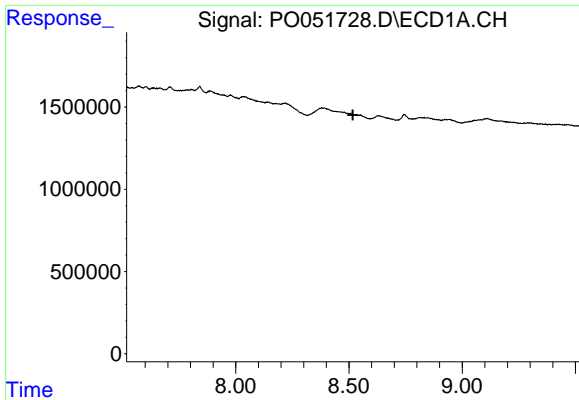
#39 AR-1262-4

R.T.: 0.000 min
 Exp R.T. : 8.606 min
 Response: 0
 Conc: N.D.



#39 AR-1262-4

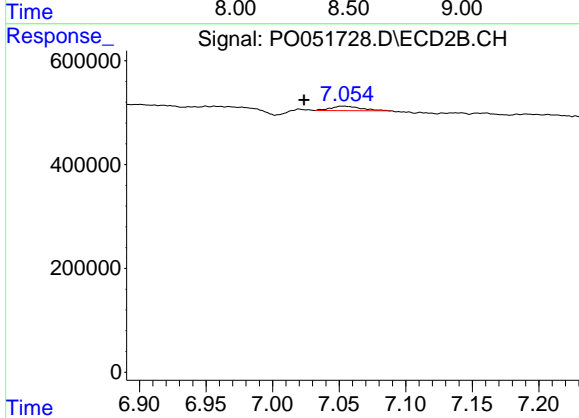
R.T.: 7.054 min
 Delta R.T.: -0.032 min
 Response: 137425
 Conc: 6.30 ng/ml



#41 AR-1268-1

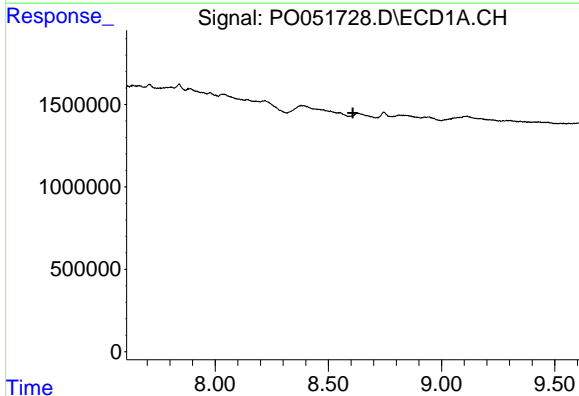
R.T.: 0.000 min
 Exp R.T. : 8.518 min
 Response: 0
 Conc: N.D.

Instrument :
 ECD_O
 ClientSampleId :



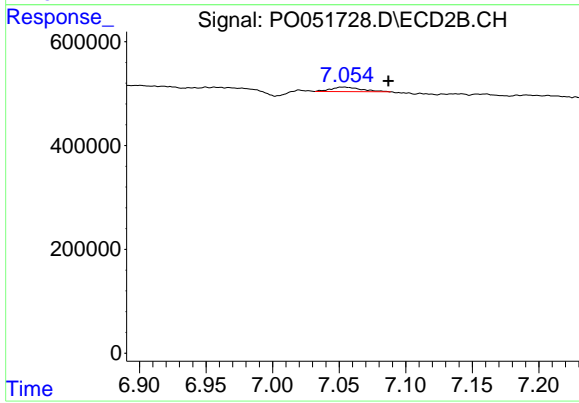
#41 AR-1268-1

R.T.: 7.054 min
 Delta R.T.: 0.030 min
 Response: 137425
 Conc: 3.48 ng/ml



#42 AR-1268-2

R.T.: 0.000 min
 Exp R.T. : 8.608 min
 Response: 0
 Conc: N.D.



#42 AR-1268-2

R.T.: 7.054 min
 Delta R.T.: -0.033 min
 Response: 137425
 Conc: 3.72 ng/ml