

Data Path : Z:\pestpcbsrv\HPCHEM1\ECD_0\Data\PO112118\
 Data File : PO051737.D
 Signal(s) : Signal #1: ECD1A.CH Signal #2: ECD2B.CH
 Acq On : 21 Nov 2018 21:55
 Operator : SM/SJ
 Sample : J6023-13
 Misc :
 ALS Vial : 31 Sample Multiplier: 1

Instrument :
 ECD_0
 ClientSampled :

Integration File signal 1: autoint1.e
 Integration File signal 2: autoint2.e
 Quant Time: Nov 22 00:02:22 2018
 Quant Method : Z:\pestpcbsrv\HPCHEM1\ECD_0\methods\PO112018.M
 Quant Title : GC EXTRACTABLES
 QLast Update : Wed Nov 21 00:55:28 2018
 Response via : Initial Calibration
 Integrator: ChemStation 6890 Scale Mode: Small noise peaks clipped

Volume Inj. : 2 µl
 Signal #1 Phase : ZB-MR1 Signal #2 Phase: ZB-MR2
 Signal #1 Info : 30Mx0.32mmx 0.50µ Signal #2 Info : 30M x 0.32mm x 0.25µm

Compound	RT#1	RT#2	Resp#1	Resp#2	ng/ml	ng/ml
System Monitoring Compounds						
1) SA Tetrachlo...	4.311	3.313	19649591	6557751	26.102	27.397
2) SA Decachlor...	9.930	8.039	15860851	7395360	34.191	34.210
Target Compounds						
3) L1 AR-1016-1	0.000	4.323	0	123558	N.D.	16.661 #
4) L1 AR-1016-2	0.000	4.323	0	123558	N.D.	10.103 #
5) L1 AR-1016-3	5.628	4.529	1015947	587180	50.902	96.173 #
6) L1 AR-1016-4	5.628	4.544	1015947	168399	61.175	31.736 #
7) L1 AR-1016-5	0.000	4.688	0	201092	N.D.	30.813 #
8) L2 AR-1221-1	4.592	3.464	1673285	67021	235.347	29.801 #
9) L2 AR-1221-2	4.592	0.000	1673285	0	319.353	N.D. #
10) L2 AR-1221-3	4.698	3.685	2518552	395133	152.782	71.903 #
11) L3 AR-1232-1	4.698	3.685	2518552	395133	189.651	85.335 #
12) L3 AR-1232-2	5.174	4.323	662919	123558	91.265	23.070 #
13) L3 AR-1232-3	0.000	4.529	0	587180	N.D.	224.639 #
14) L3 AR-1232-4	5.628	4.579	1015947	270715	142.696	122.826
15) L3 AR-1232-5	5.740	4.688	545113	201092	110.283	79.442 #
16) L4 AR-1242-1	0.000	4.323	0	123558	N.D.	20.822 #
17) L4 AR-1242-2	0.000	4.323	0	123558	N.D.	12.379 #
18) L4 AR-1242-3	5.628	4.529	1015947	587180	63.616	118.381 #
19) L4 AR-1242-4	5.628	4.579	1015947	270715	76.936	57.130 #
20) L4 AR-1242-5	6.371	5.075	732742	374930	54.822	62.200
21) L5 AR-1248-1	0.000	4.323	0	123558	N.D.	22.936 #
22) L5 AR-1248-2	5.740	4.544	545113	168399	25.641	21.342
23) L5 AR-1248-3	0.000	4.579	0	270715	N.D.	34.532 #
24) L5 AR-1248-4	6.371	4.688	732742	201092	27.724	20.728 #
25) L5 AR-1248-5	6.371	5.107	732742	100704	29.220	10.666 #
26) L6 AR-1254-1	6.292	5.075	660817	374930	26.756	27.271
27) L6 AR-1254-2	6.554	5.258	668402	155977	17.162	13.069
28) L6 AR-1254-3	6.968	0.000	178037	0	4.416	N.D. #
29) L6 AR-1254-4	7.211	0.000	737300	0	23.638	N.D. #
31) L7 AR-1260-1	0.000	5.732	0	50526	N.D.	3.724 #
32) L7 AR-1260-2	7.389	0.000	632299	0	14.978	N.D. #
33) L7 AR-1260-3	7.711	6.054	388287	214765	13.365	14.020
34) L7 AR-1260-4	0.000	6.551	0	174381	N.D.	17.160 #
36) L8 AR-1262-1	7.711	0.000	388287	0	8.290	N.D. #
38) L8 AR-1262-3	0.000	7.052	0	196776	N.D.	15.766 #
39) L8 AR-1262-4	0.000	7.052	0	196776	N.D.	9.016 #
41) L9 AR-1268-1	0.000	7.052	0	196776	N.D.	4.984 #
42) L9 AR-1268-2	0.000	7.052	0	196776	N.D.	5.332 #

(f)=RT Delta > 1/2 Window (#)=Amounts differ by > 25% (m)=manual int.

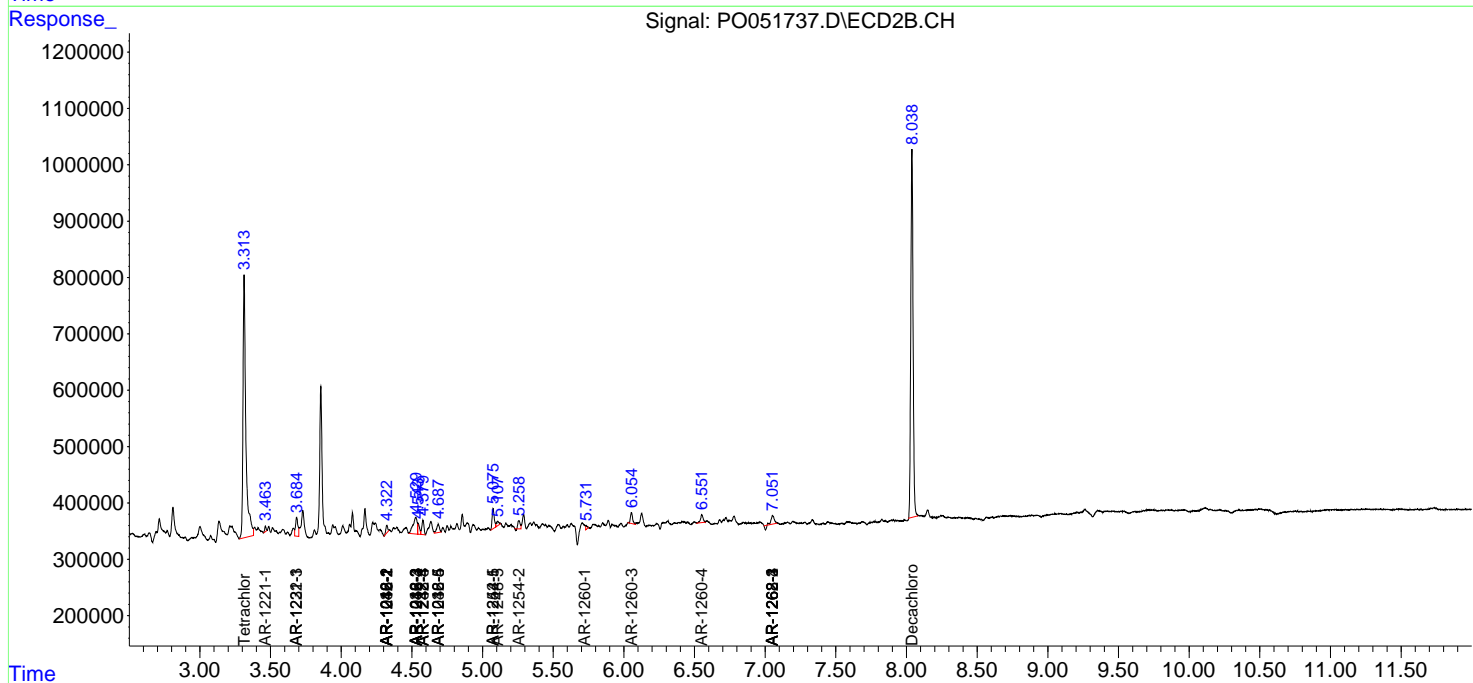
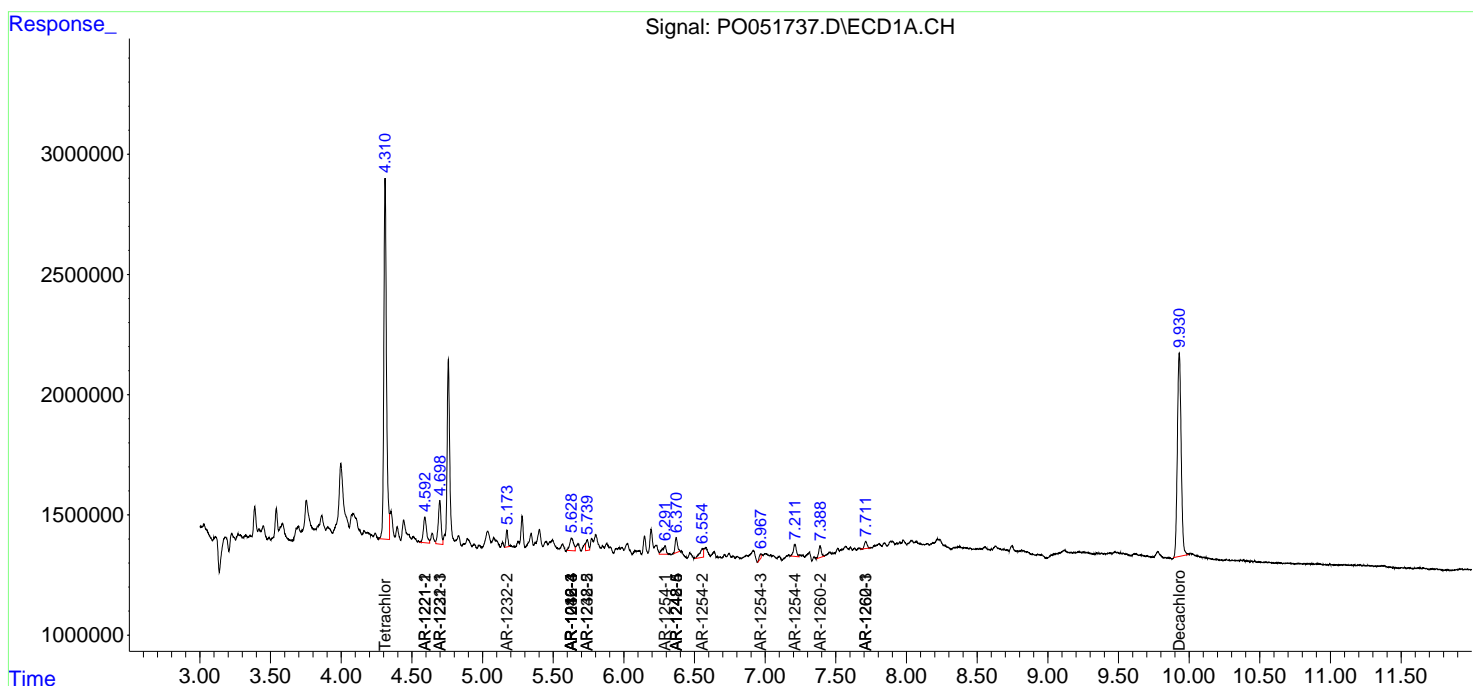
Instrument :
ECD_O
ClientSampleId :

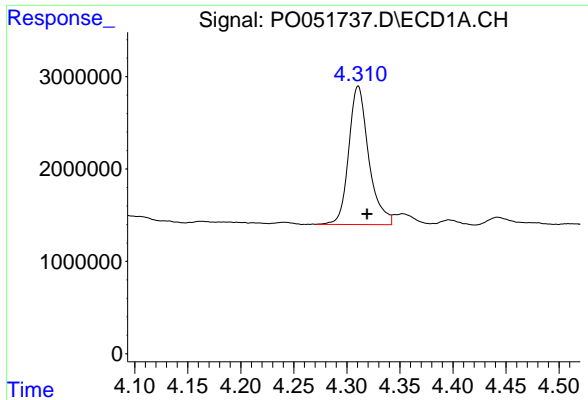
Data Path : Z:\pestpcbsrv\HPCHEM1\ECD_O\Data\PO112118\
 Data File : PO051737.D
 Signal(s) : Signal #1: ECD1A.CH Signal #2: ECD2B.CH
 Acq On : 21 Nov 2018 21:55
 Operator : SM/SJ
 Sample : J6023-13
 Misc :
 ALS Vial : 31 Sample Multiplier: 1

Instrument :
 ECD_O
 ClientSampled :

Integration File signal 1: autoint1.e
 Integration File signal 2: autoint2.e
 Quant Time: Nov 22 00:02:22 2018
 Quant Method : Z:\pestpcbsrv\HPCHEM1\ECD_O\methods\PO112018.M
 Quant Title : GC EXTRACTABLES
 QLast Update : Wed Nov 21 00:55:28 2018
 Response via : Initial Calibration
 Integrator: ChemStation 6890 Scale Mode: Small noise peaks clipped

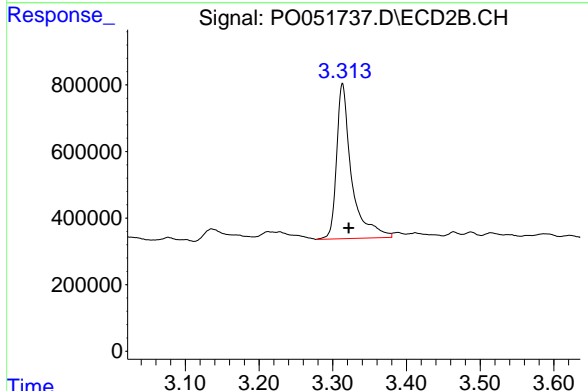
Volume Inj. : 2 µl
 Signal #1 Phase : ZB-MR1 Signal #2 Phase: ZB-MR2
 Signal #1 Info : 30Mx0.32mmx 0.50µ Signal #2 Info : 30M x 0.32mm x 0.25µm



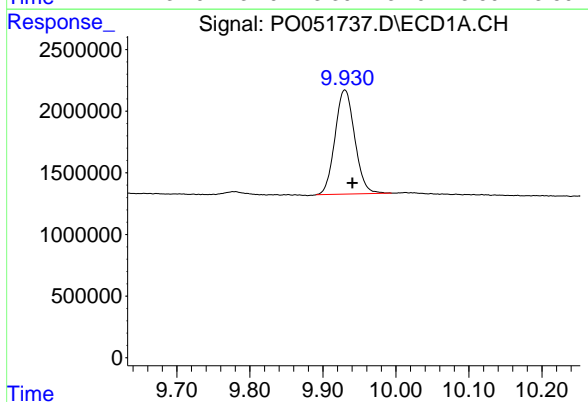


#1 Tetrachloro-m-xylene
 R.T.: 4.311 min
 Delta R.T.: -0.008 min
 Response: 19649591
 Conc: 26.10 ng/ml

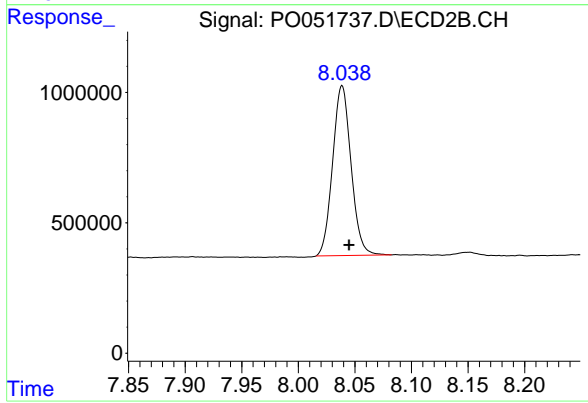
Instrument :
 ECD_O
 ClientSampleId :



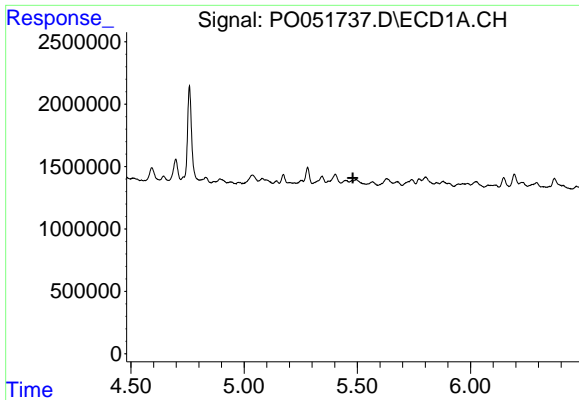
#1 Tetrachloro-m-xylene
 R.T.: 3.313 min
 Delta R.T.: -0.009 min
 Response: 6557751
 Conc: 27.40 ng/ml



#2 Decachlorobiphenyl
 R.T.: 9.930 min
 Delta R.T.: -0.010 min
 Response: 15860851
 Conc: 34.19 ng/ml



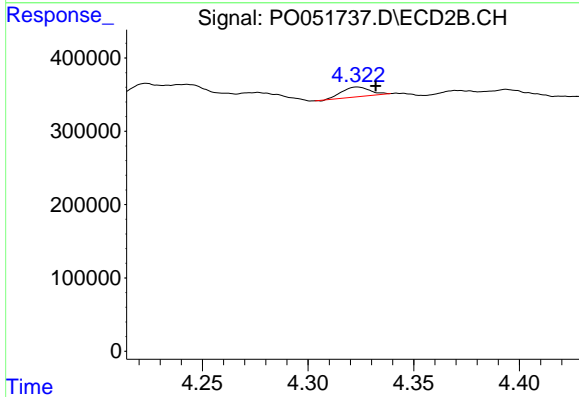
#2 Decachlorobiphenyl
 R.T.: 8.039 min
 Delta R.T.: -0.006 min
 Response: 7395360
 Conc: 34.21 ng/ml



#3 AR-1016-1

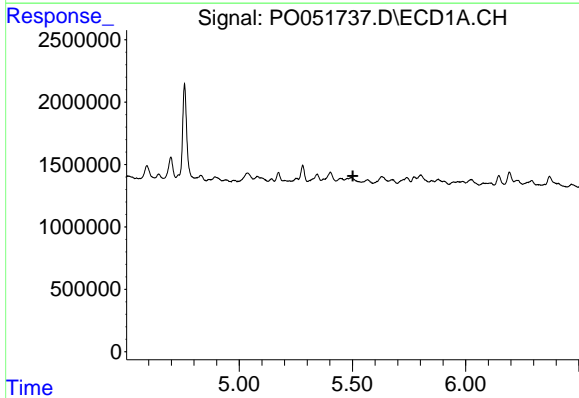
R.T.: 0.000 min
 Exp R.T.: 5.480 min
 Response: 0
 Conc: N.D.

Instrument :
 ECD_O
 ClientSampled :



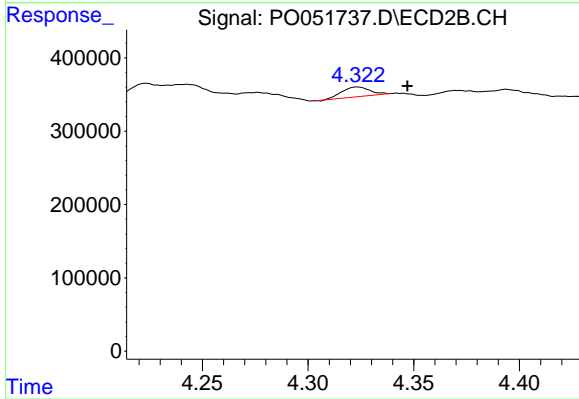
#3 AR-1016-1

R.T.: 4.323 min
 Delta R.T.: -0.009 min
 Response: 123558
 Conc: 16.66 ng/ml



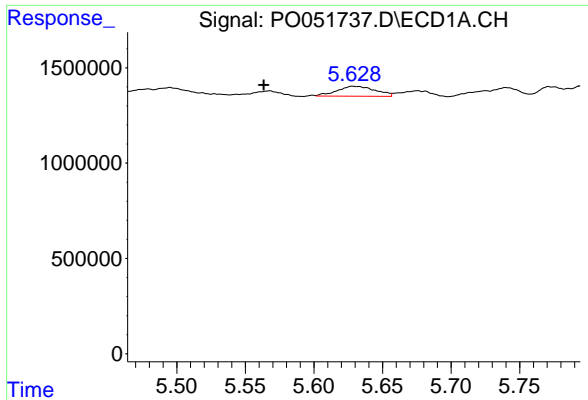
#4 AR-1016-2

R.T.: 0.000 min
 Exp R.T.: 5.502 min
 Response: 0
 Conc: N.D.



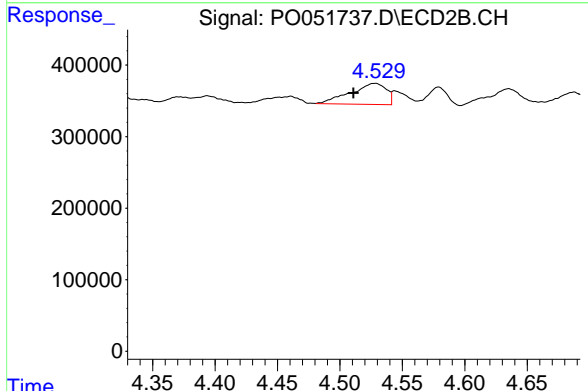
#4 AR-1016-2

R.T.: 4.323 min
 Delta R.T.: -0.024 min
 Response: 123558
 Conc: 10.10 ng/ml

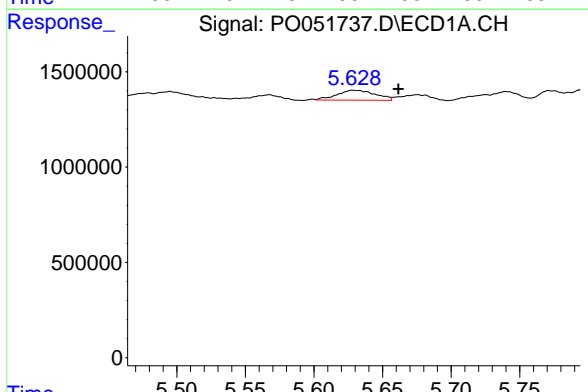


#5 AR-1016-3
 R.T.: 5.628 min
 Delta R.T.: 0.065 min
 Response: 1015947
 Conc: 50.90 ng/ml

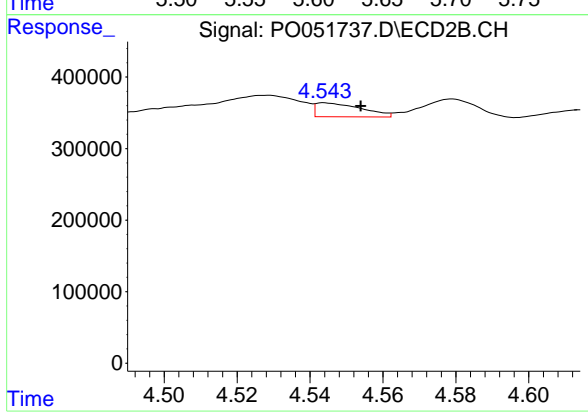
Instrument :
 ECD_O
 ClientSampleId :



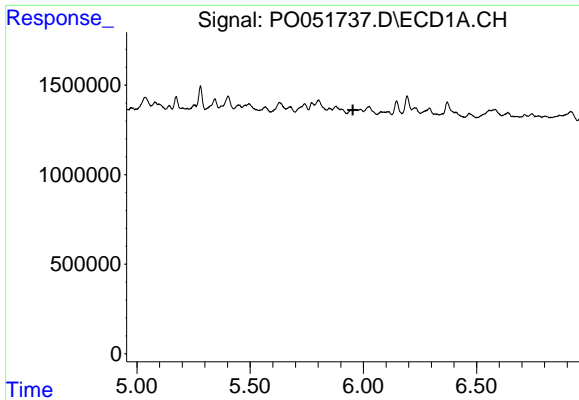
#5 AR-1016-3
 R.T.: 4.529 min
 Delta R.T.: 0.018 min
 Response: 587180
 Conc: 96.17 ng/ml



#6 AR-1016-4
 R.T.: 5.628 min
 Delta R.T.: -0.034 min
 Response: 1015947
 Conc: 61.17 ng/ml



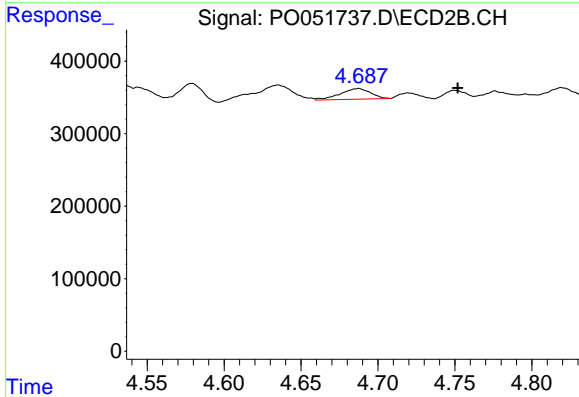
#6 AR-1016-4
 R.T.: 4.544 min
 Delta R.T.: -0.010 min
 Response: 168399
 Conc: 31.74 ng/ml



#7 AR-1016-5

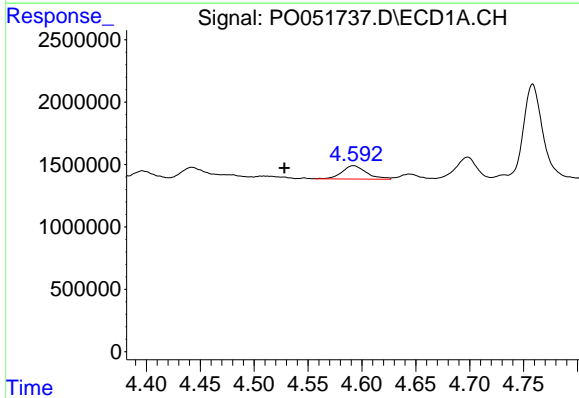
R.T.: 0.000 min
 Exp R.T.: 5.953 min
 Response: 0
 Conc: N.D.

Instrument :
 ECD_O
 ClientSampled :



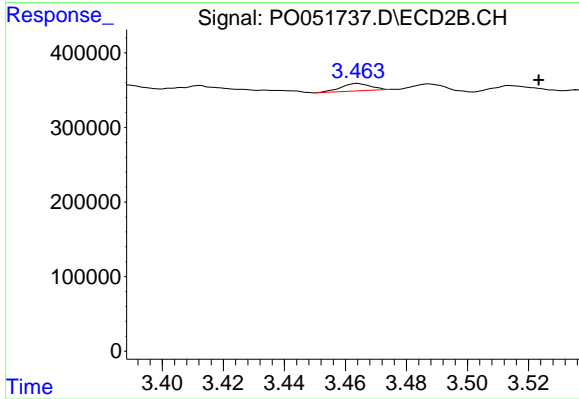
#7 AR-1016-5

R.T.: 4.688 min
 Delta R.T.: -0.064 min
 Response: 201092
 Conc: 30.81 ng/ml



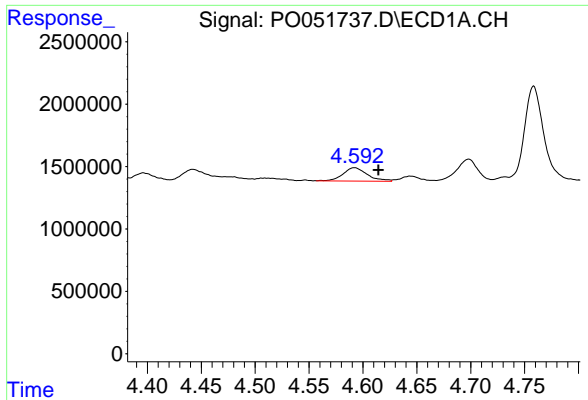
#8 AR-1221-1

R.T.: 4.592 min
 Delta R.T.: 0.064 min
 Response: 1673285
 Conc: 235.35 ng/ml



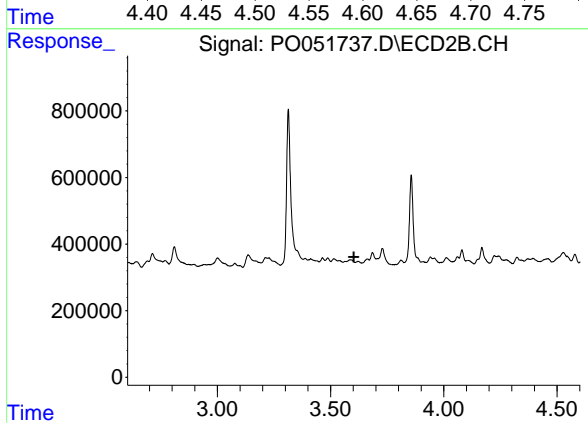
#8 AR-1221-1

R.T.: 3.464 min
 Delta R.T.: -0.059 min
 Response: 67021
 Conc: 29.80 ng/ml

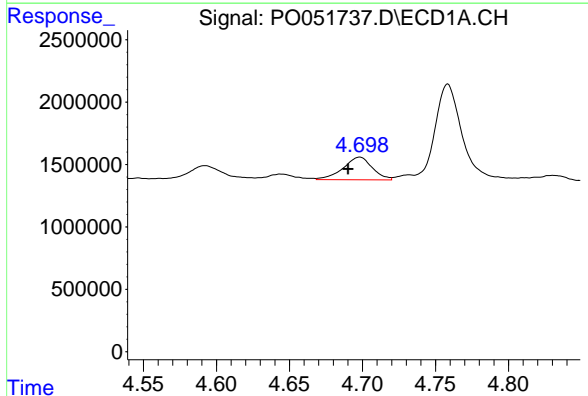


#9 AR-1221-2
 R.T.: 4.592 min
 Delta R.T.: -0.022 min
 Response: 1673285
 Conc: 319.35 ng/ml

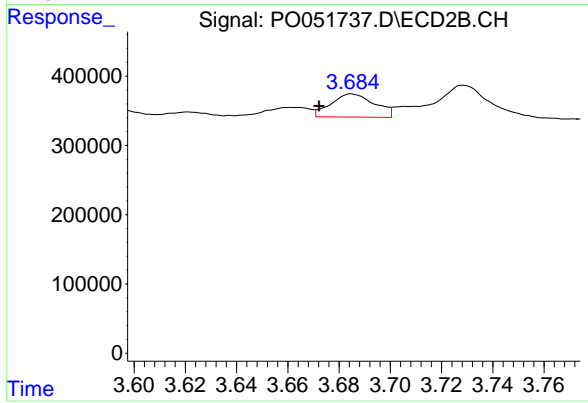
Instrument :
 ECD_O
 ClientSampled :



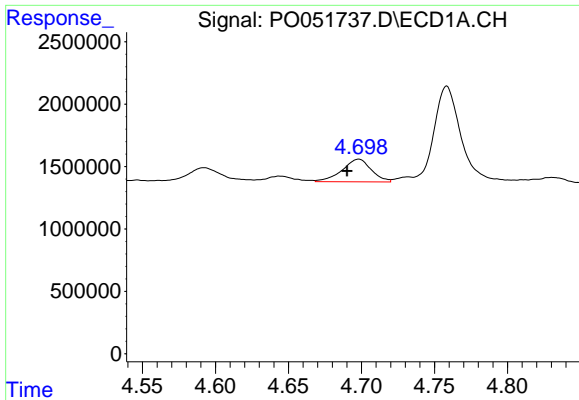
#9 AR-1221-2
 R.T.: 0.000 min
 Exp R.T. : 3.603 min
 Response: 0
 Conc: N.D.



#10 AR-1221-3
 R.T.: 4.698 min
 Delta R.T.: 0.008 min
 Response: 2518552
 Conc: 152.78 ng/ml

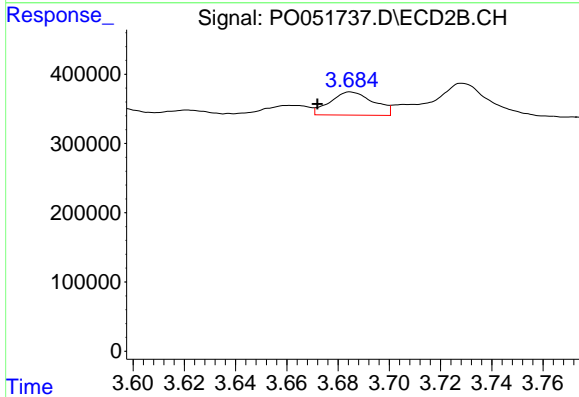


#10 AR-1221-3
 R.T.: 3.685 min
 Delta R.T.: 0.013 min
 Response: 395133
 Conc: 71.90 ng/ml

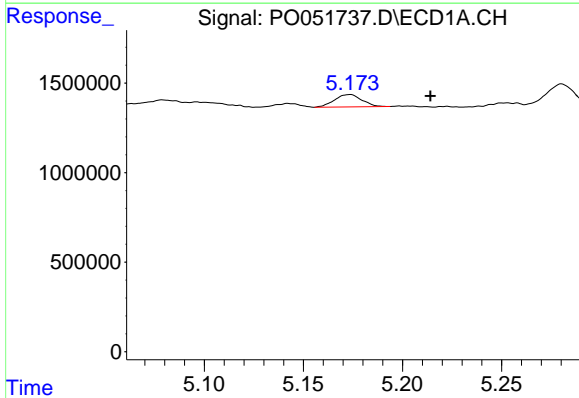


#11 AR-1232-1
 R.T.: 4.698 min
 Delta R.T.: 0.008 min
 Response: 2518552
 Conc: 189.65 ng/ml

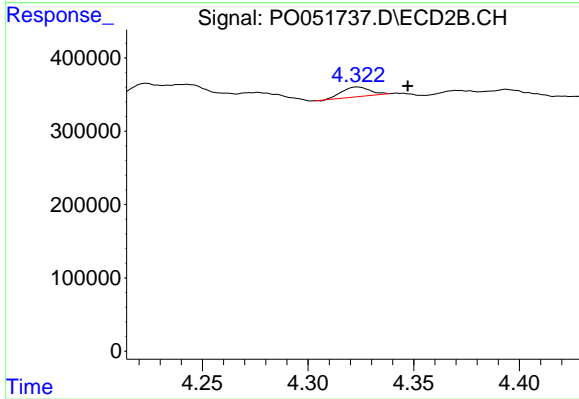
Instrument :
 ECD_O
 ClientSampleId :



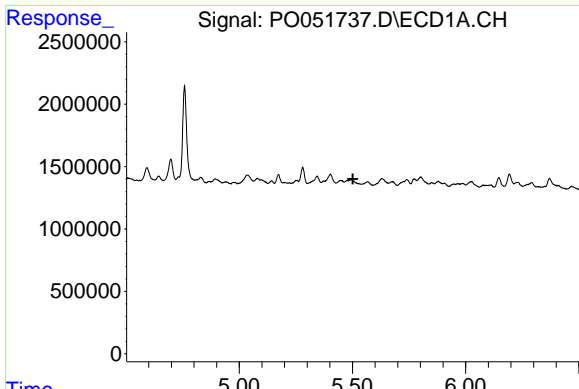
#11 AR-1232-1
 R.T.: 3.685 min
 Delta R.T.: 0.013 min
 Response: 395133
 Conc: 85.33 ng/ml



#12 AR-1232-2
 R.T.: 5.174 min
 Delta R.T.: -0.040 min
 Response: 662919
 Conc: 91.26 ng/ml



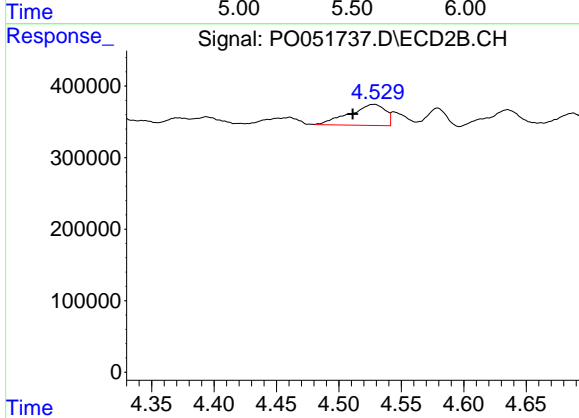
#12 AR-1232-2
 R.T.: 4.323 min
 Delta R.T.: -0.024 min
 Response: 123558
 Conc: 23.07 ng/ml



#13 AR-1232-3

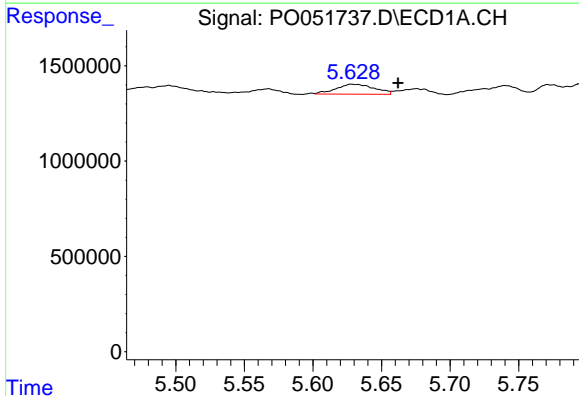
R.T.: 0.000 min
 Exp R.T.: 5.502 min
 Response: 0
 Conc: N.D.

Instrument :
 ECD_O
 ClientSampled :



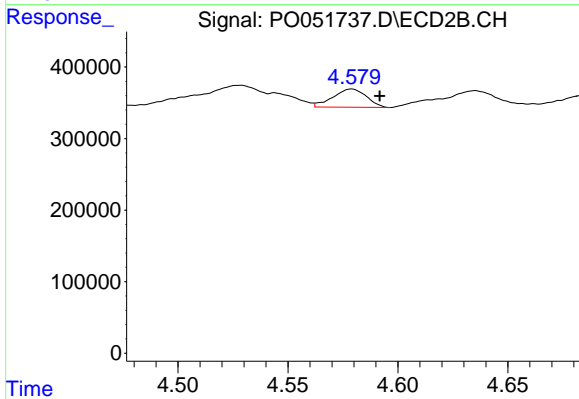
#13 AR-1232-3

R.T.: 4.529 min
 Delta R.T.: 0.018 min
 Response: 587180
 Conc: 224.64 ng/ml



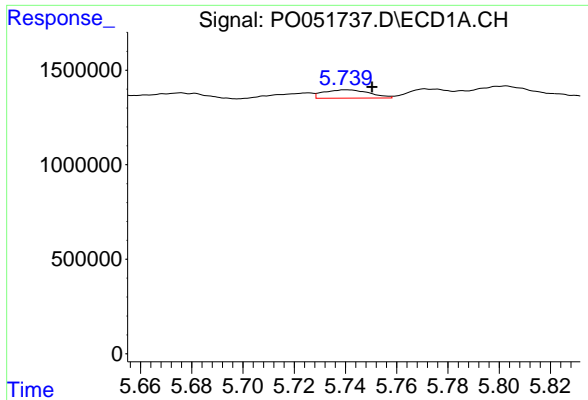
#14 AR-1232-4

R.T.: 5.628 min
 Delta R.T.: -0.034 min
 Response: 1015947
 Conc: 142.70 ng/ml



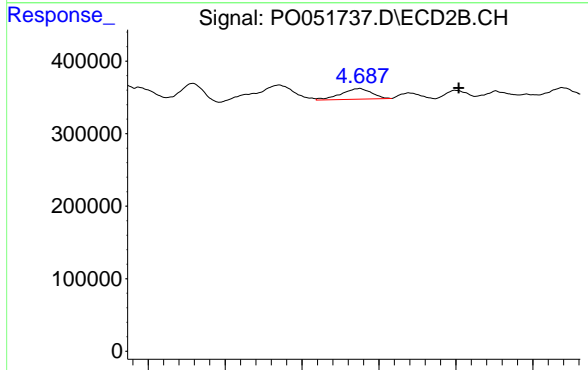
#14 AR-1232-4

R.T.: 4.579 min
 Delta R.T.: -0.013 min
 Response: 270715
 Conc: 122.83 ng/ml

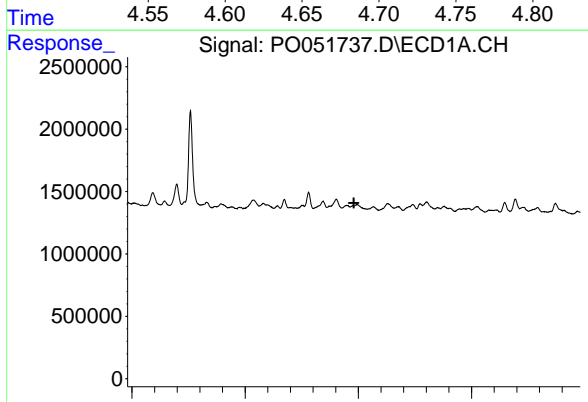


#15 AR-1232-5
 R.T.: 5.740 min
 Delta R.T.: -0.010 min
 Response: 545113
 Conc: 110.28 ng/ml

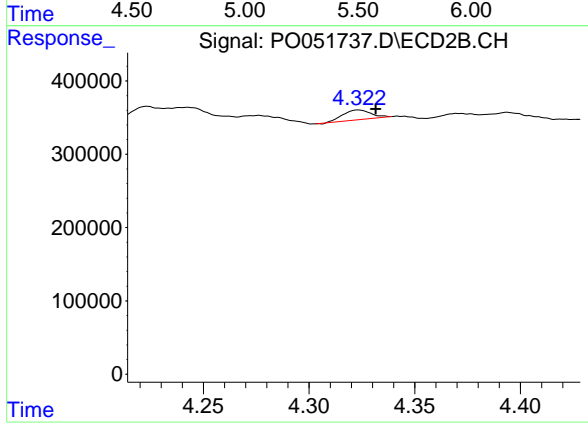
Instrument :
 ECD_O
 ClientSampleId :



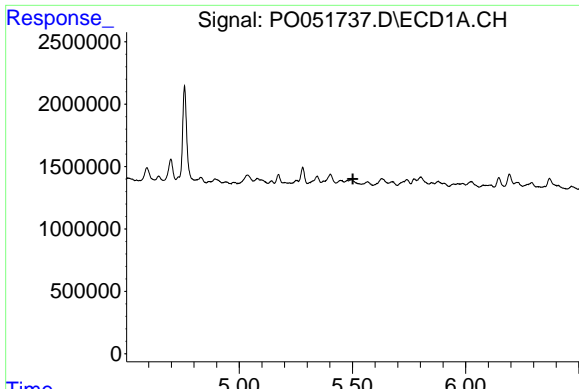
#15 AR-1232-5
 R.T.: 4.688 min
 Delta R.T.: -0.064 min
 Response: 201092
 Conc: 79.44 ng/ml



#16 AR-1242-1
 R.T.: 0.000 min
 Exp R.T. : 5.480 min
 Response: 0
 Conc: N.D.



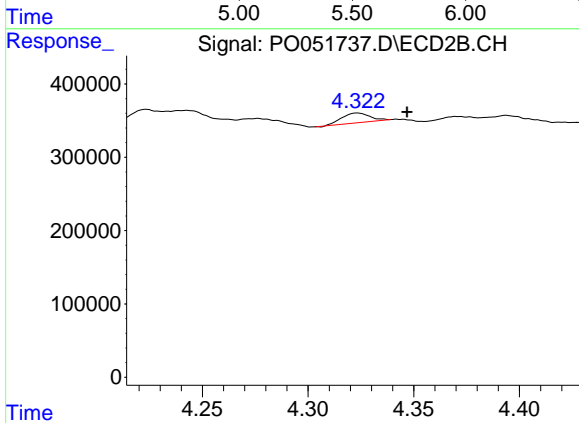
#16 AR-1242-1
 R.T.: 4.323 min
 Delta R.T.: -0.008 min
 Response: 123558
 Conc: 20.82 ng/ml



#17 AR-1242-2

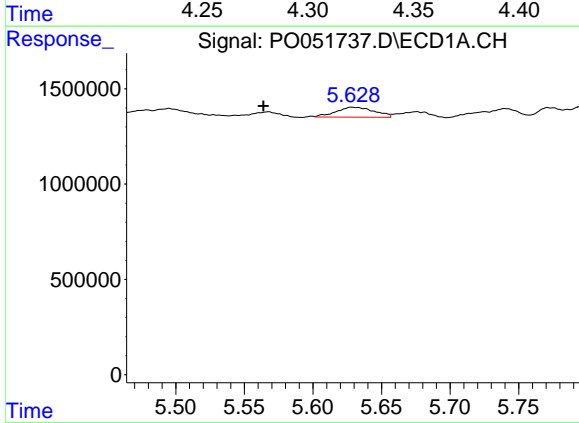
R.T.: 0.000 min
 Exp R.T.: 5.502 min
 Response: 0
 Conc: N.D.

Instrument :
 ECD_O
 ClientSampled :



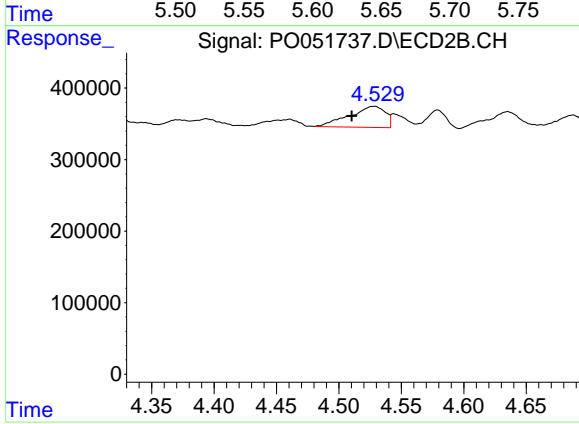
#17 AR-1242-2

R.T.: 4.323 min
 Delta R.T.: -0.024 min
 Response: 123558
 Conc: 12.38 ng/ml



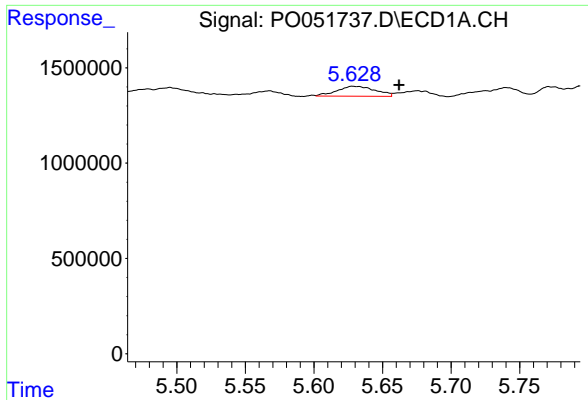
#18 AR-1242-3

R.T.: 5.628 min
 Delta R.T.: 0.064 min
 Response: 1015947
 Conc: 63.62 ng/ml



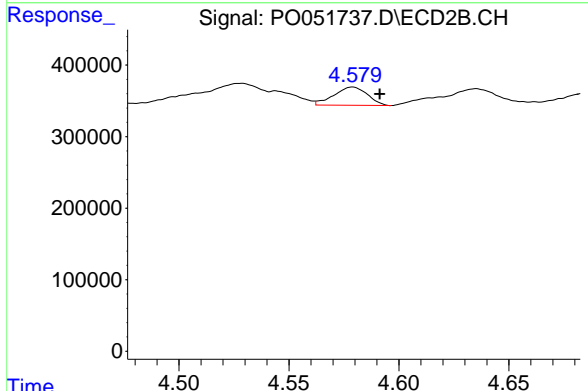
#18 AR-1242-3

R.T.: 4.529 min
 Delta R.T.: 0.019 min
 Response: 587180
 Conc: 118.38 ng/ml

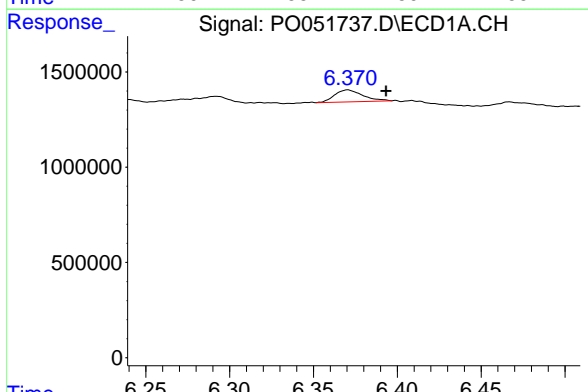


#19 AR-1242-4
 R.T.: 5.628 min
 Delta R.T.: -0.034 min
 Response: 1015947
 Conc: 76.94 ng/ml

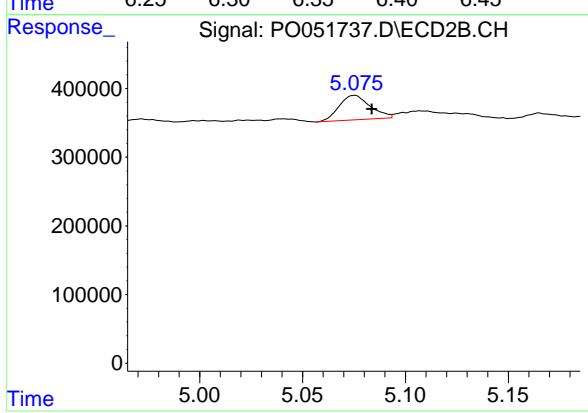
Instrument :
 ECD_O
 ClientSampled :



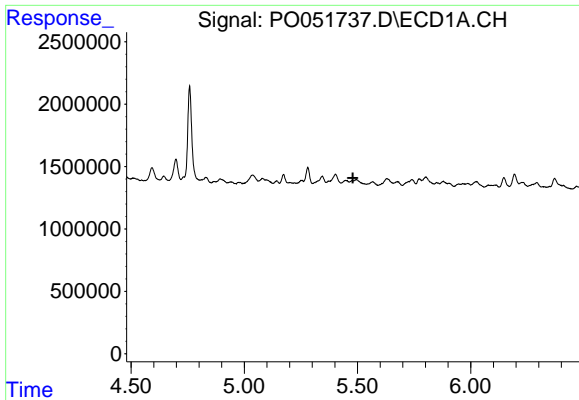
#19 AR-1242-4
 R.T.: 4.579 min
 Delta R.T.: -0.012 min
 Response: 270715
 Conc: 57.13 ng/ml



#20 AR-1242-5
 R.T.: 6.371 min
 Delta R.T.: -0.023 min
 Response: 732742
 Conc: 54.82 ng/ml



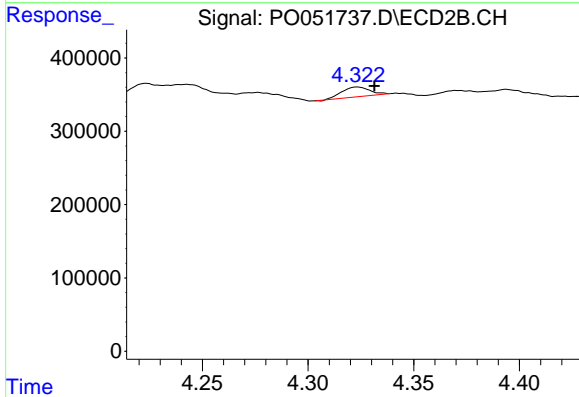
#20 AR-1242-5
 R.T.: 5.075 min
 Delta R.T.: -0.008 min
 Response: 374930
 Conc: 62.20 ng/ml



#21 AR-1248-1

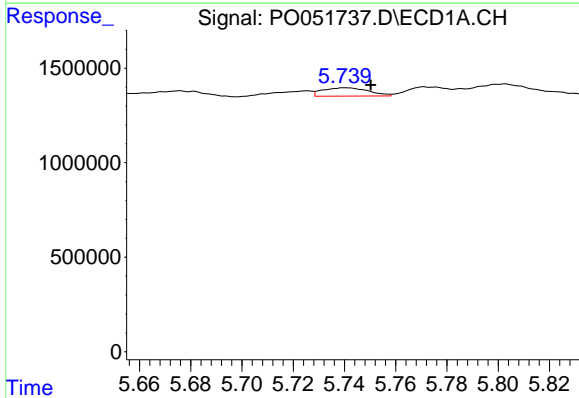
R.T.: 0.000 min
 Exp R.T.: 5.480 min
 Response: 0
 Conc: N.D.

Instrument :
 ECD_O
 ClientSampled :



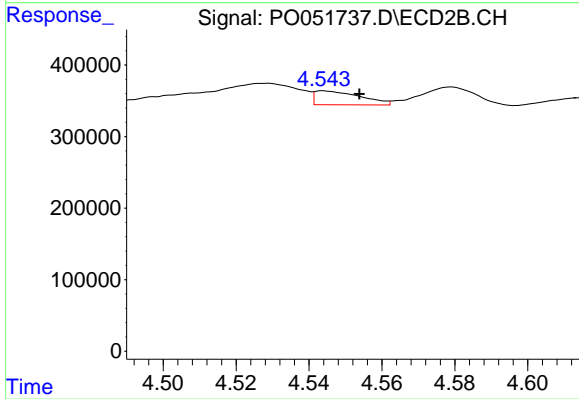
#21 AR-1248-1

R.T.: 4.323 min
 Delta R.T.: -0.008 min
 Response: 123558
 Conc: 22.94 ng/ml



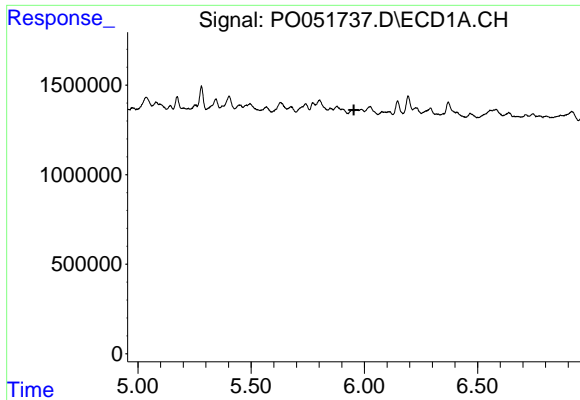
#22 AR-1248-2

R.T.: 5.740 min
 Delta R.T.: -0.010 min
 Response: 545113
 Conc: 25.64 ng/ml



#22 AR-1248-2

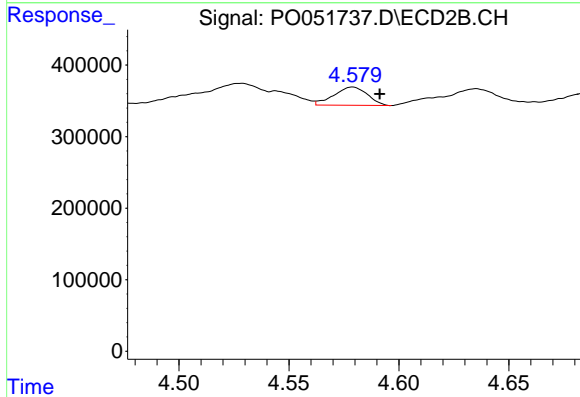
R.T.: 4.544 min
 Delta R.T.: -0.010 min
 Response: 168399
 Conc: 21.34 ng/ml



#23 AR-1248-3

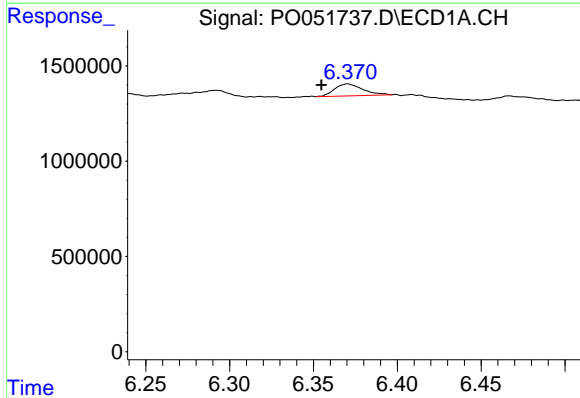
R.T.: 0.000 min
 Exp R.T.: 5.954 min
 Response: 0
 Conc: N.D.

Instrument :
 ECD_O
 ClientSampled :



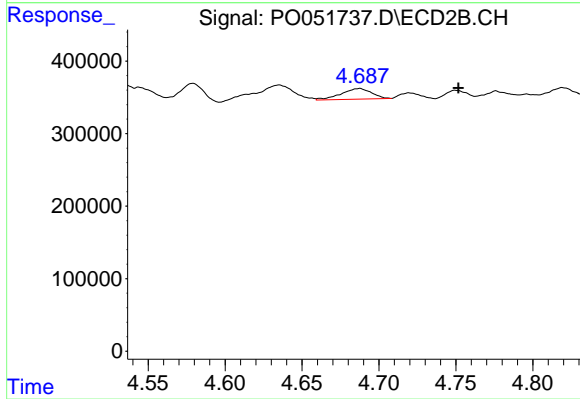
#23 AR-1248-3

R.T.: 4.579 min
 Delta R.T.: -0.012 min
 Response: 270715
 Conc: 34.53 ng/ml



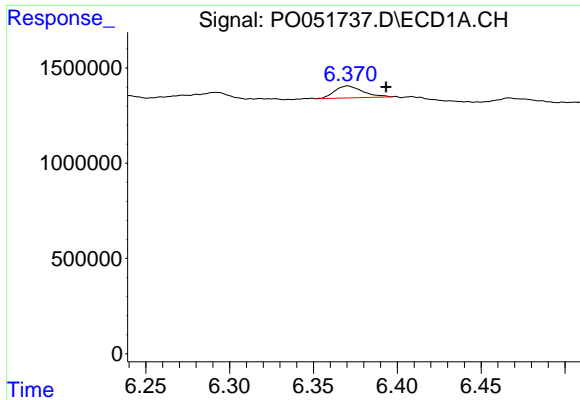
#24 AR-1248-4

R.T.: 6.371 min
 Delta R.T.: 0.016 min
 Response: 732742
 Conc: 27.72 ng/ml



#24 AR-1248-4

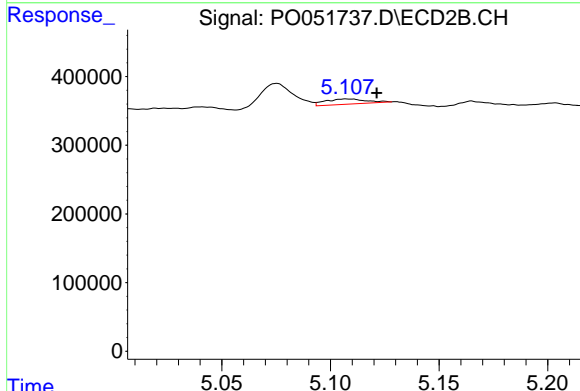
R.T.: 4.688 min
 Delta R.T.: -0.064 min
 Response: 201092
 Conc: 20.73 ng/ml



#25 AR-1248-5

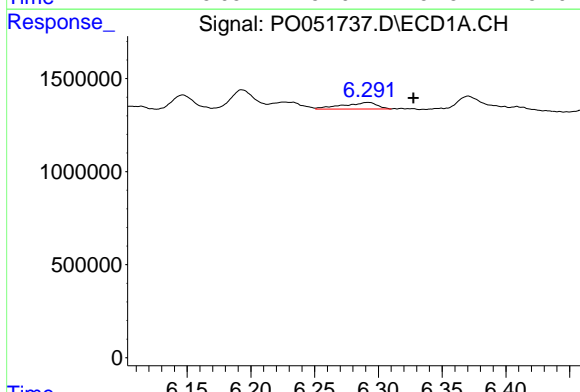
R.T.: 6.371 min
 Delta R.T.: -0.023 min
 Response: 732742
 Conc: 29.22 ng/ml

Instrument :
 ECD_O
 ClientSampled :



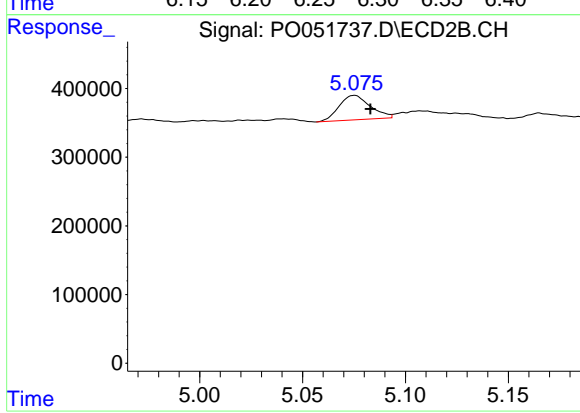
#25 AR-1248-5

R.T.: 5.107 min
 Delta R.T.: -0.014 min
 Response: 100704
 Conc: 10.67 ng/ml



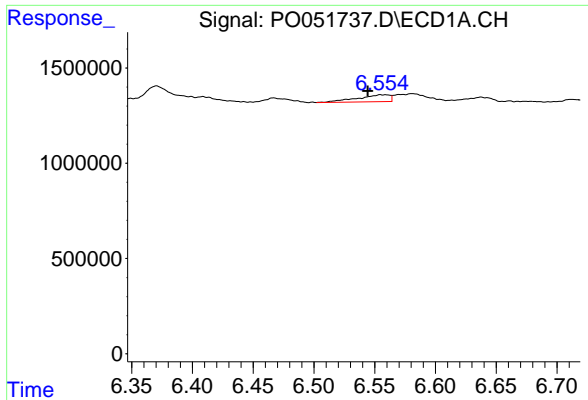
#26 AR-1254-1

R.T.: 6.292 min
 Delta R.T.: -0.036 min
 Response: 660817
 Conc: 26.76 ng/ml



#26 AR-1254-1

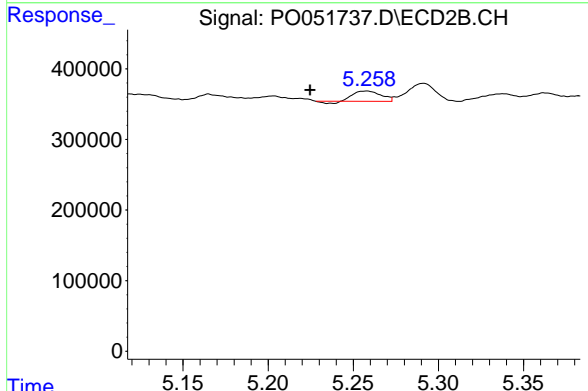
R.T.: 5.075 min
 Delta R.T.: -0.008 min
 Response: 374930
 Conc: 27.27 ng/ml



#27 AR-1254-2

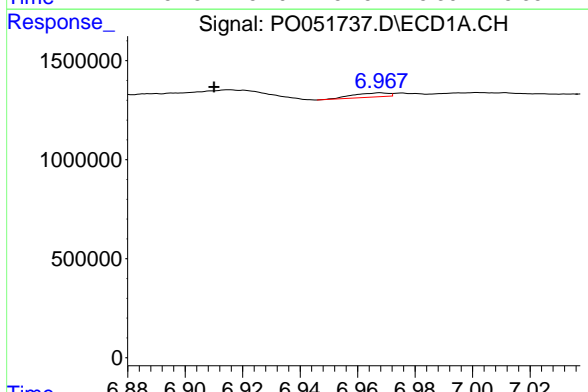
R.T.: 6.554 min
 Delta R.T.: 0.010 min
 Response: 668402
 Conc: 17.16 ng/ml

Instrument :
 ECD_O
 ClientSampleId :



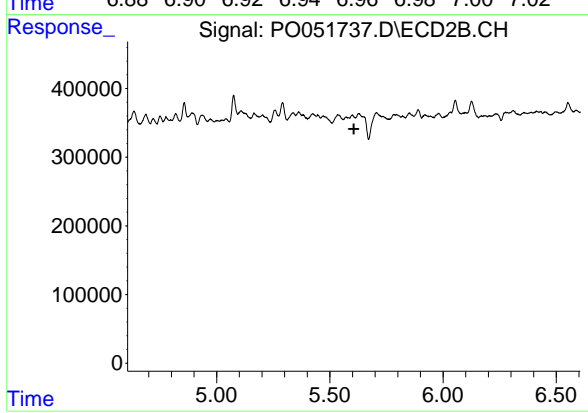
#27 AR-1254-2

R.T.: 5.258 min
 Delta R.T.: 0.033 min
 Response: 155977
 Conc: 13.07 ng/ml



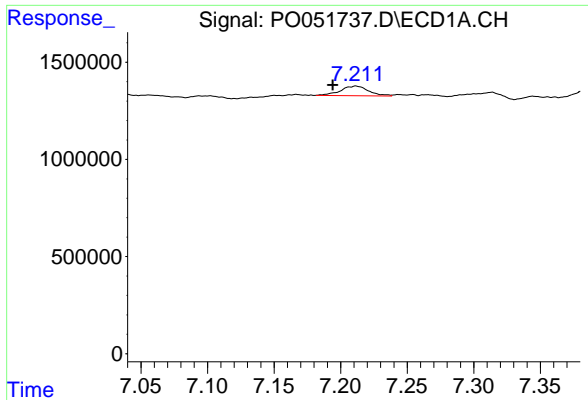
#28 AR-1254-3

R.T.: 6.968 min
 Delta R.T.: 0.058 min
 Response: 178037
 Conc: 4.42 ng/ml



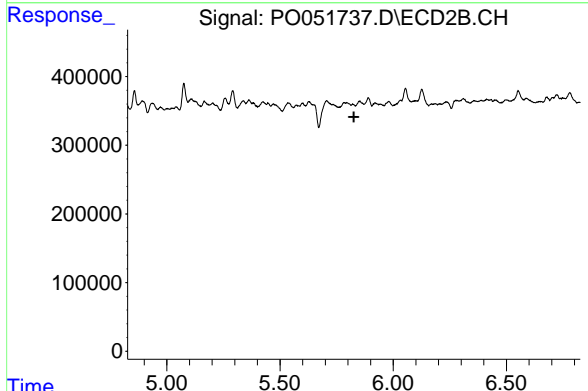
#28 AR-1254-3

R.T.: 0.000 min
 Exp R.T. : 5.606 min
 Response: 0
 Conc: N.D.

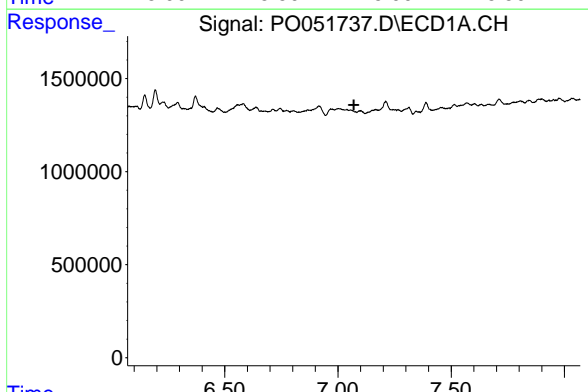


#29 AR-1254-4
 R.T.: 7.211 min
 Delta R.T.: 0.017 min
 Response: 737300
 Conc: 23.64 ng/ml

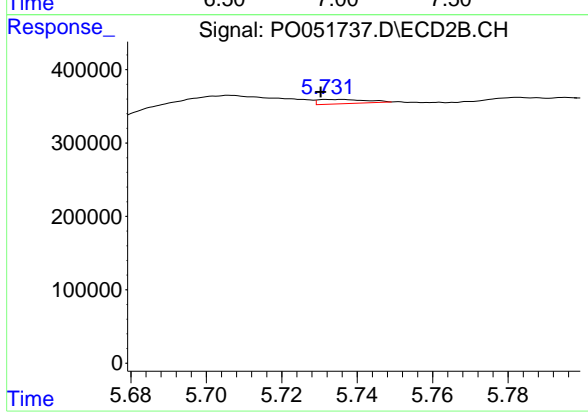
Instrument :
 ECD_O
 ClientSampled :



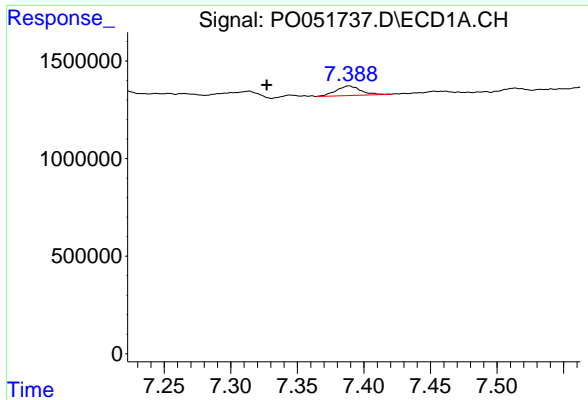
#29 AR-1254-4
 R.T.: 0.000 min
 Exp R.T. : 5.826 min
 Response: 0
 Conc: N.D.



#31 AR-1260-1
 R.T.: 0.000 min
 Exp R.T. : 7.070 min
 Response: 0
 Conc: N.D.

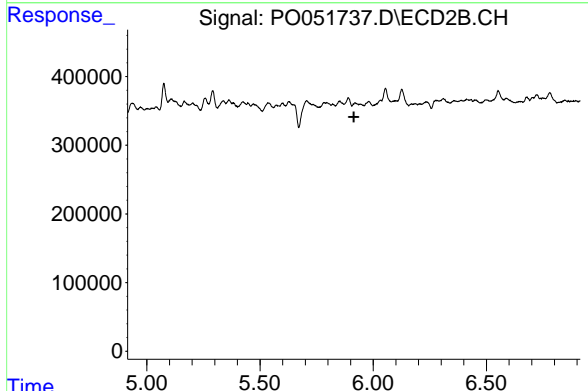


#31 AR-1260-1
 R.T.: 5.732 min
 Delta R.T.: 0.002 min
 Response: 50526
 Conc: 3.72 ng/ml

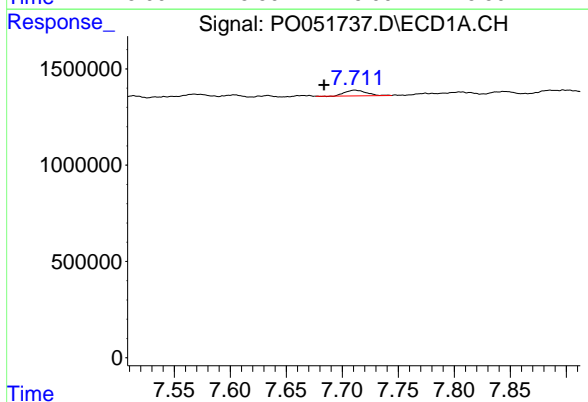


#32 AR-1260-2
 R.T.: 7.389 min
 Delta R.T.: 0.062 min
 Response: 632299
 Conc: 14.98 ng/ml

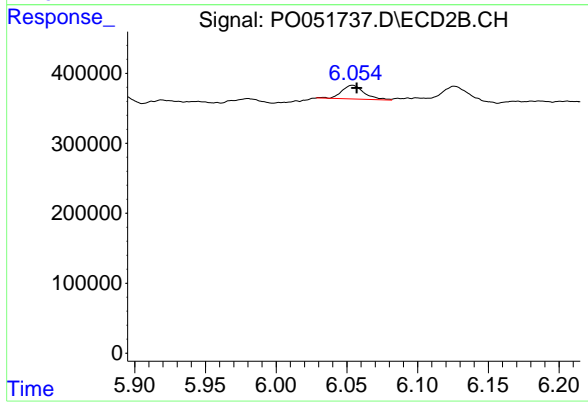
Instrument :
 ECD_O
 ClientSampleId :



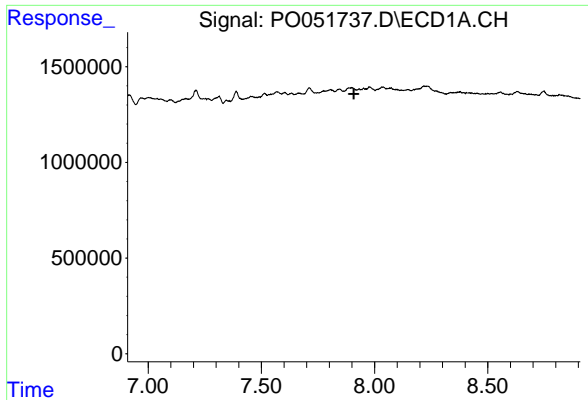
#32 AR-1260-2
 R.T.: 0.000 min
 Exp R.T. : 5.914 min
 Response: 0
 Conc: N.D.



#33 AR-1260-3
 R.T.: 7.711 min
 Delta R.T.: 0.028 min
 Response: 388287
 Conc: 13.36 ng/ml



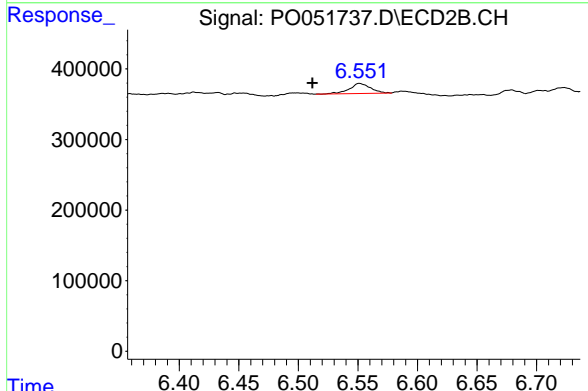
#33 AR-1260-3
 R.T.: 6.054 min
 Delta R.T.: -0.003 min
 Response: 214765
 Conc: 14.02 ng/ml



#34 AR-1260-4

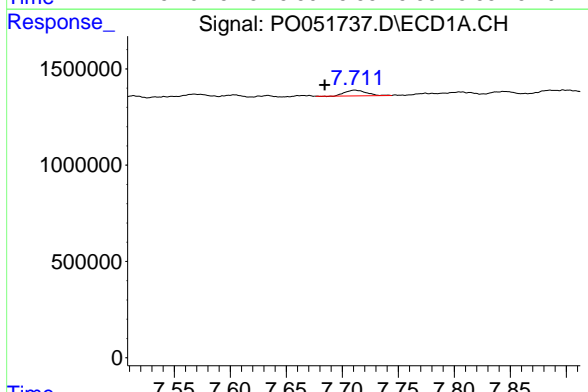
R.T.: 0.000 min
 Exp R.T.: 7.909 min
 Response: 0
 Conc: N.D.

Instrument :
 ECD_O
 ClientSampled :



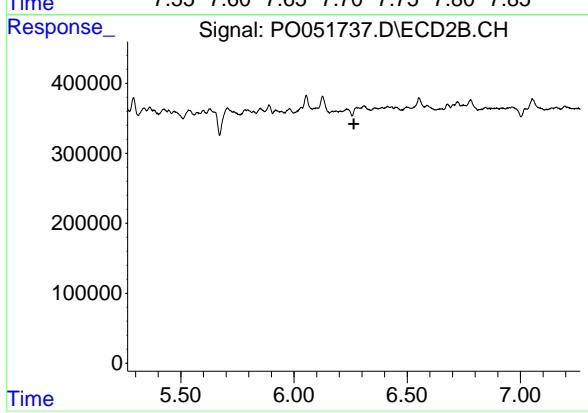
#34 AR-1260-4

R.T.: 6.551 min
 Delta R.T.: 0.040 min
 Response: 174381
 Conc: 17.16 ng/ml



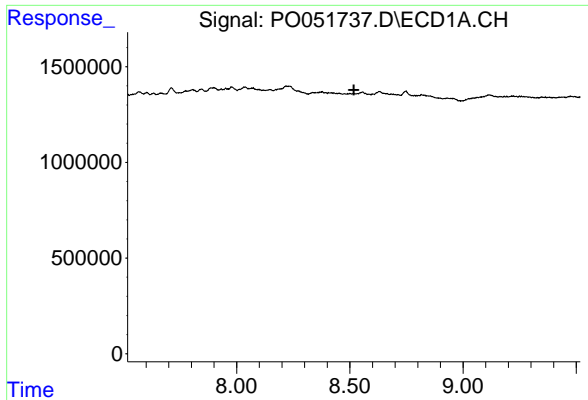
#36 AR-1262-1

R.T.: 7.711 min
 Delta R.T.: 0.027 min
 Response: 388287
 Conc: 8.29 ng/ml



#36 AR-1262-1

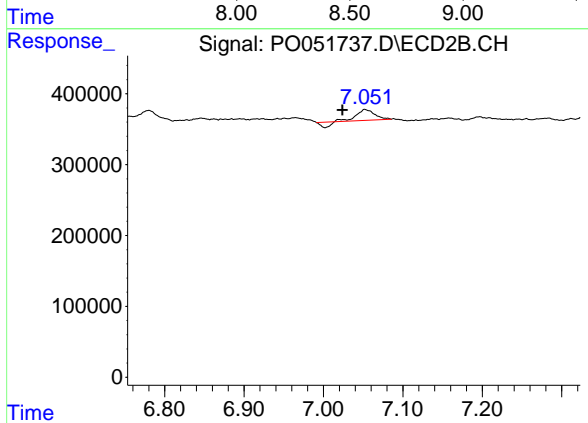
R.T.: 0.000 min
 Exp R.T.: 6.265 min
 Response: 0
 Conc: N.D.



#38 AR-1262-3

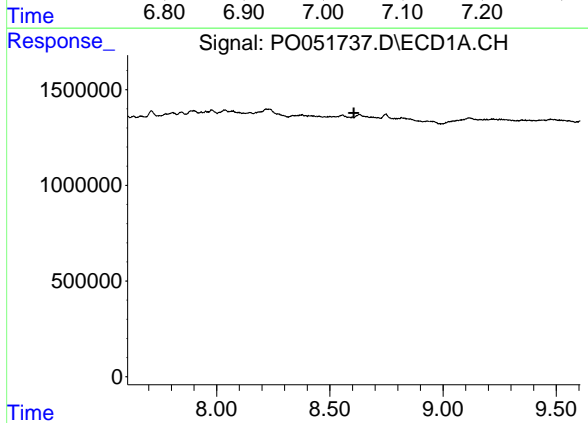
R.T.: 0.000 min
 Exp R.T. : 8.518 min
 Response: 0
 Conc: N.D.

Instrument :
 ECD_O
 ClientSampleId :



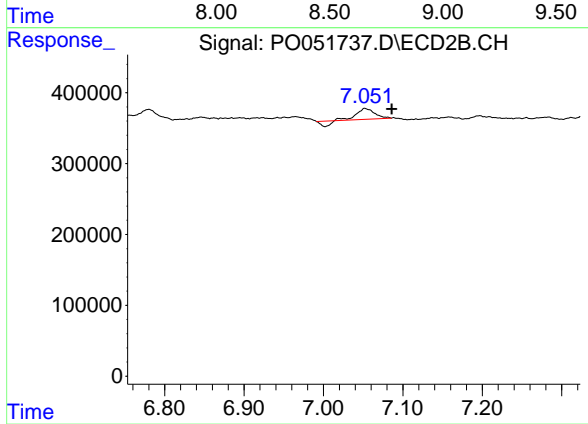
#38 AR-1262-3

R.T.: 7.052 min
 Delta R.T.: 0.028 min
 Response: 196776
 Conc: 15.77 ng/ml



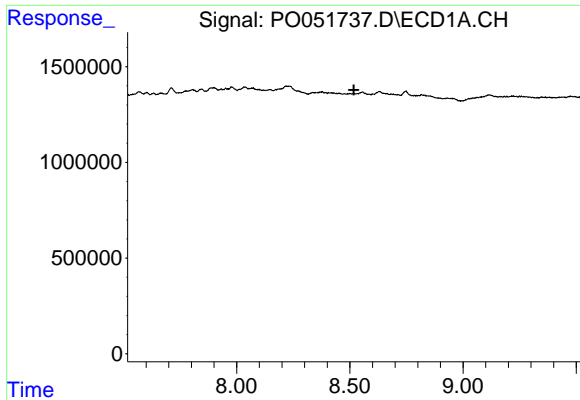
#39 AR-1262-4

R.T.: 0.000 min
 Exp R.T. : 8.606 min
 Response: 0
 Conc: N.D.



#39 AR-1262-4

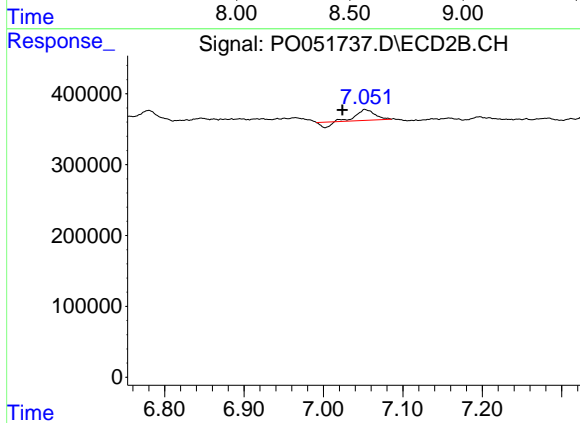
R.T.: 7.052 min
 Delta R.T.: -0.034 min
 Response: 196776
 Conc: 9.02 ng/ml



#41 AR-1268-1

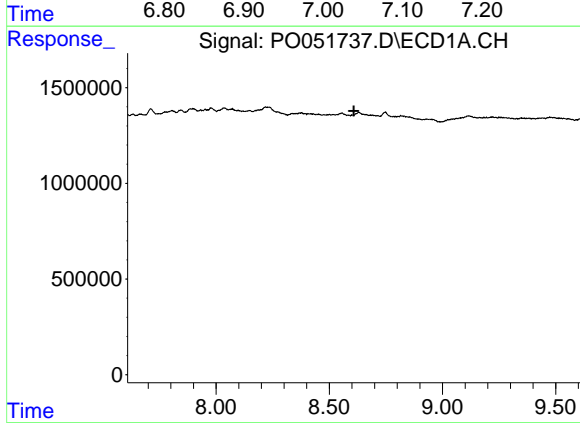
R.T.: 0.000 min
 Exp R.T. : 8.518 min
 Response: 0
 Conc: N.D.

Instrument :
 ECD_O
 ClientSampled :



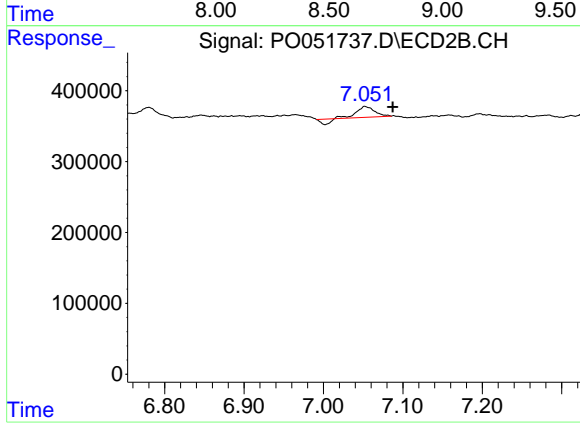
#41 AR-1268-1

R.T.: 7.052 min
 Delta R.T.: 0.028 min
 Response: 196776
 Conc: 4.98 ng/ml



#42 AR-1268-2

R.T.: 0.000 min
 Exp R.T. : 8.608 min
 Response: 0
 Conc: N.D.



#42 AR-1268-2

R.T.: 7.052 min
 Delta R.T.: -0.035 min
 Response: 196776
 Conc: 5.33 ng/ml