

Data Path : Z:\pestpcbsrv\HPCHEM1\ECD\_0\Data\PO112118\  
 Data File : PO051733.D  
 Signal(s) : Signal #1: ECD1A.CH Signal #2: ECD2B.CH  
 Acq On : 21 Nov 2018 20:47  
 Operator : SM/SJ  
 Sample : J6023-09  
 Misc :  
 ALS Vial : 27 Sample Multiplier: 1

Instrument :  
 ECD\_0  
 ClientSampleId :  
 111918-TIPC-E-D-B

Integration File signal 1: autoint1.e  
 Integration File signal 2: autoint2.e  
 Quant Time: Nov 21 23:59:46 2018  
 Quant Method : Z:\pestpcbsrv\HPCHEM1\ECD\_0\methods\PO112018.M  
 Quant Title : GC EXTRACTABLES  
 QLast Update : Wed Nov 21 00:55:28 2018  
 Response via : Initial Calibration  
 Integrator: ChemStation 6890 Scale Mode: Small noise peaks clipped

Volume Inj. : 2 µl  
 Signal #1 Phase : ZB-MR1 Signal #2 Phase: ZB-MR2  
 Signal #1 Info : 30Mx0.32mmx 0.50µ Signal #2 Info : 30M x 0.32mm x 0.25µm

Compound	RT#1	RT#2	Resp#1	Resp#2	ng/ml	ng/ml
-----						
System Monitoring Compounds						
1) SA Tetrachlo...	4.310	3.313	21051227	6848749	27.964	28.612
2) SA Decachlor...	9.928	8.039	18238653	8411721	39.317	38.912

Target Compounds

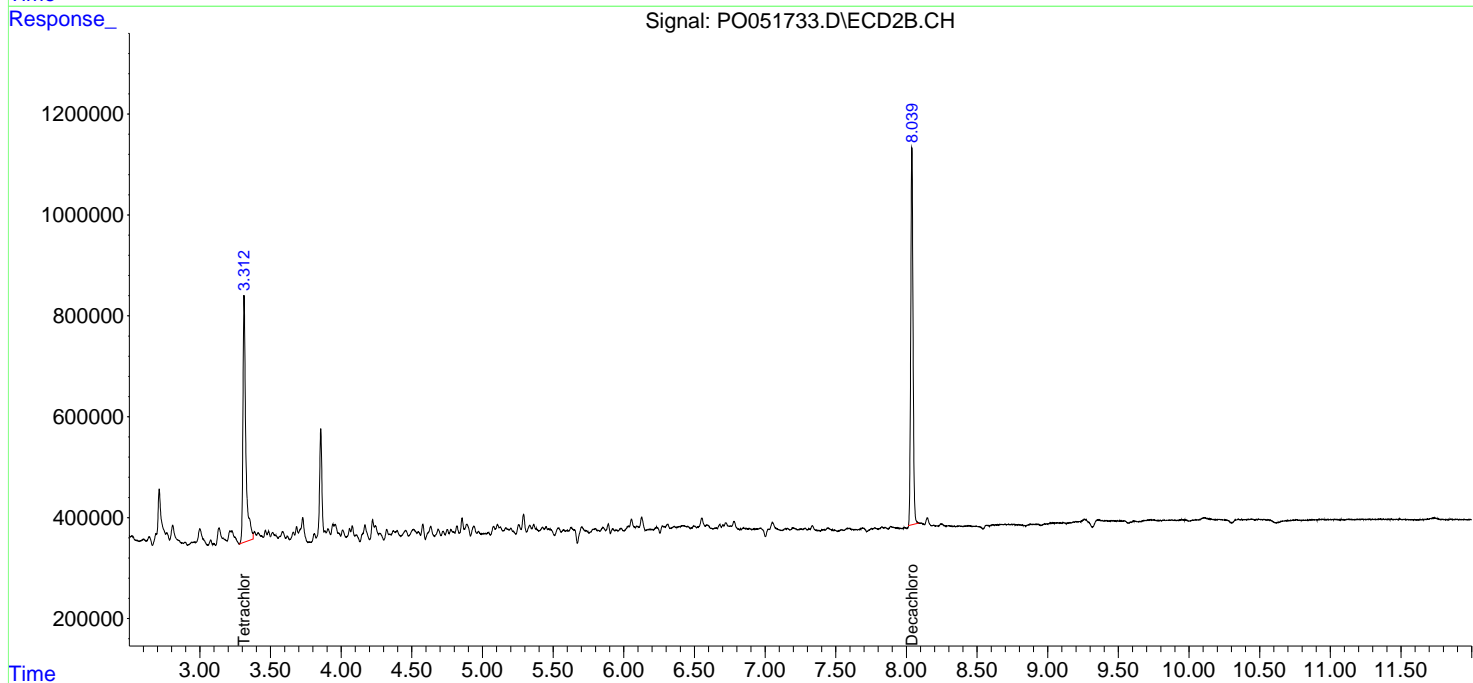
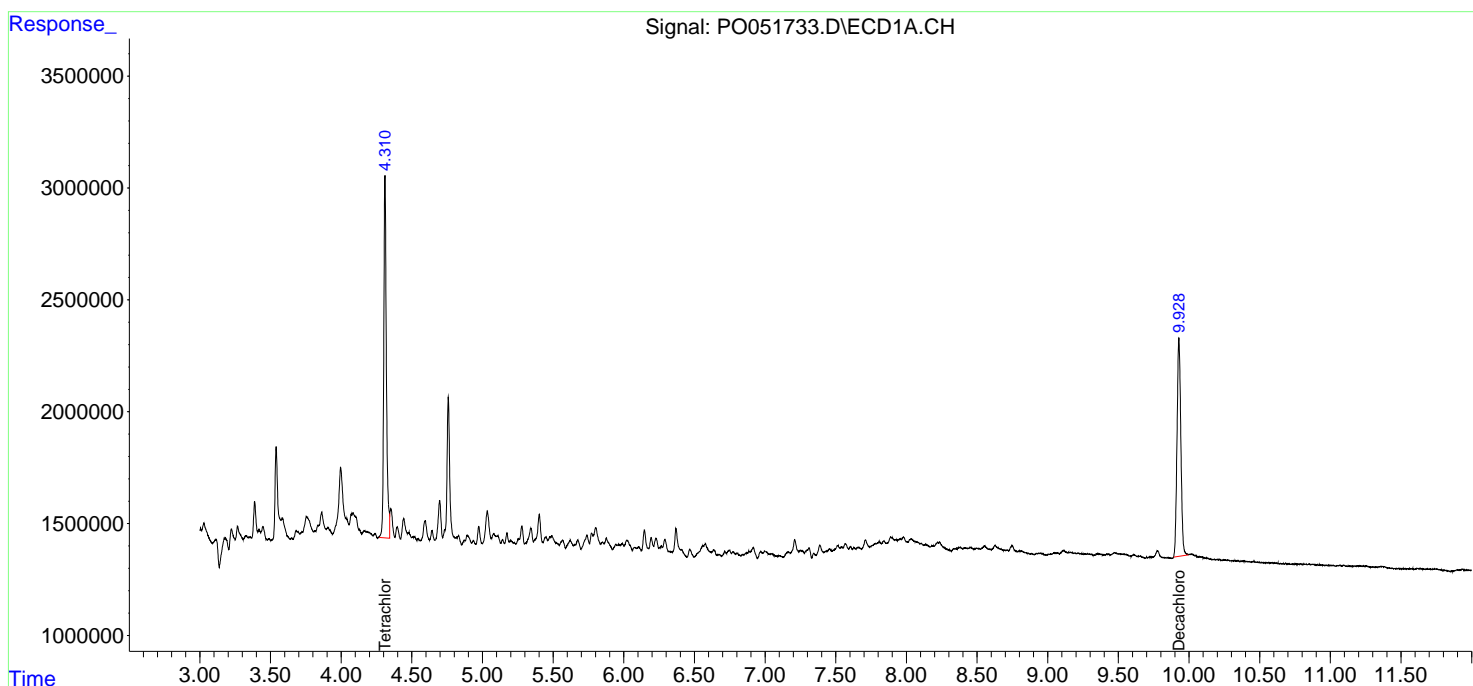
(f)=RT Delta > 1/2 Window (#)=Amounts differ by > 25% (m)=manual int.

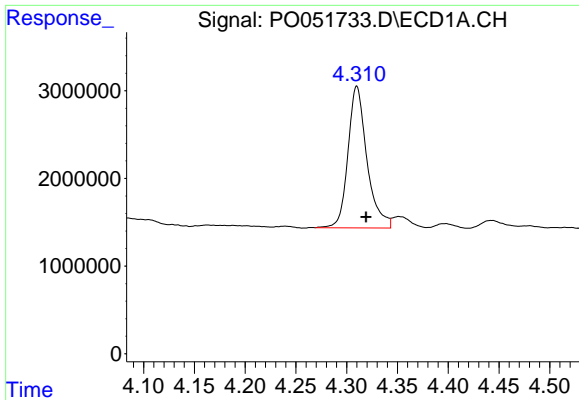
Data Path : Z:\pestpcbsrv\HPCHEM1\ECD\_O\Data\PO112118\  
 Data File : PO051733.D  
 Signal(s) : Signal #1: ECD1A.CH Signal #2: ECD2B.CH  
 Acq On : 21 Nov 2018 20:47  
 Operator : SM/SJ  
 Sample : J6023-09  
 Misc :  
 ALS Vial : 27 Sample Multiplier: 1

Instrument :  
 ECD\_O  
 ClientSampleId :  
 111918-TIPC-E-D-B

Integration File signal 1: autoint1.e  
 Integration File signal 2: autoint2.e  
 Quant Time: Nov 21 23:59:46 2018  
 Quant Method : Z:\pestpcbsrv\HPCHEM1\ECD\_O\methods\PO112018.M  
 Quant Title : GC EXTRACTABLES  
 QLast Update : Wed Nov 21 00:55:28 2018  
 Response via : Initial Calibration  
 Integrator: ChemStation 6890 Scale Mode: Small noise peaks clipped

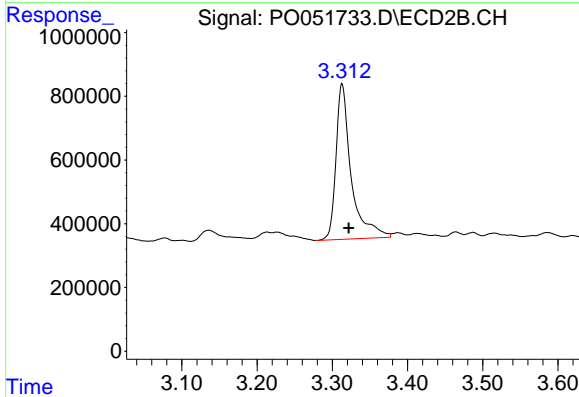
Volume Inj. : 2 µl  
 Signal #1 Phase : ZB-MR1 Signal #2 Phase: ZB-MR2  
 Signal #1 Info : 30Mx0.32mmx 0.50µ Signal #2 Info : 30M x 0.32mm x 0.25µm



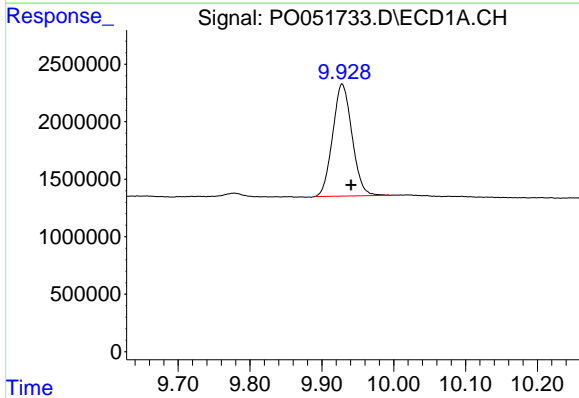


#1 Tetrachloro-m-xylene  
 R.T.: 4.310 min  
 Delta R.T.: -0.009 min  
 Response: 21051227  
 Conc: 27.96 ng/ml

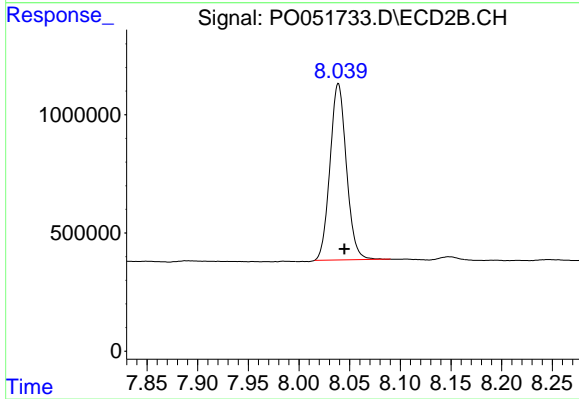
Instrument :  
 ECD\_O  
 ClientSampleId :  
 111918-TIPC-E-D-B



#1 Tetrachloro-m-xylene  
 R.T.: 3.313 min  
 Delta R.T.: -0.009 min  
 Response: 6848749  
 Conc: 28.61 ng/ml



#2 Decachlorobiphenyl  
 R.T.: 9.928 min  
 Delta R.T.: -0.012 min  
 Response: 18238653  
 Conc: 39.32 ng/ml



#2 Decachlorobiphenyl  
 R.T.: 8.039 min  
 Delta R.T.: -0.006 min  
 Response: 8411721  
 Conc: 38.91 ng/ml