

Data Path : Z:\pestpcbsrv\HPCHEM1\ECD_0\Data\PO112122\
 Data File : PO090827.D
 Signal(s) : Signal #1: ECD1A.ch Signal #2: ECD2B.ch
 Acq On : 21 Nov 2022 14:30
 Operator : YP/AJ
 Sample : N5641-12
 Misc :
 ALS Vial : 22 Sample Multiplier: 1

Instrument :
 ECD_0
 ClientSampleId :

Integration File signal 1: autoint1.e
 Integration File signal 2: autoint2.e
 Quant Time: Nov 21 21:32:34 2022
 Quant Method : Z:\pestpcbsrv\HPCHEM1\ECD_0\methods\PO102722.M
 Quant Title : GC EXTRACTABLES
 QLast Update : Fri Oct 28 05:05:44 2022
 Response via : Initial Calibration
 Integrator: ChemStation

Volume Inj. : 2 µl
 Signal #1 Phase : ZB-MR1 Signal #2 Phase: ZB-MR2
 Signal #1 Info : 30Mx0.32mmx 0.50µ Signal #2 Info : 30M x 0.32mm x 0.25µm

Compound	RT#1	RT#2	Resp#1	Resp#2	ng/ml	ng/ml

System Monitoring Compounds						
1) SA Tetrachlo...	4.299	3.477	63864430	20368094	19.871	19.165
2) SA Decachlor...	10.046	8.480	41106280	16207296	16.774	15.736
Target Compounds						
3) L1 AR-1016-1	5.474	4.587	218880	876230	2.058	22.684 #
4) L1 AR-1016-2	5.497	4.587	776703	876230	5.099	16.380 #
5) L1 AR-1016-3	5.560	4.758	443755	370112	4.696	12.748 #
6) L1 AR-1016-4	0.000	4.799	0	437797	N.D.	17.637 #
7) L1 AR-1016-5	5.959	5.012	1844418	267816	23.897	8.718 #
8) L2 AR-1221-1	4.508	3.680	783772	166048	20.533	12.429 #
9) L2 AR-1221-2	4.604	3.775	1002224	424962	35.254	41.873
10) L2 AR-1221-3	4.690	3.895	608289	2540500	7.104	81.667 #
11) L3 AR-1232-1	4.690	3.895	608289	2540500	9.289	106.786 #
12) L3 AR-1232-2	5.202	4.587	730095	876230	18.992	36.566 #
13) L3 AR-1232-3	5.497	4.758	776703	370112	11.591	29.145 #
14) L3 AR-1232-4	0.000	4.865	0	523234	N.D.	42.914 #
15) L3 AR-1232-5	5.751	5.012	1302746	267816	49.173	20.058 #
16) L4 AR-1242-1	5.474	4.587	218880	876230	2.645	29.432 #
17) L4 AR-1242-2	5.497	4.587	776703	876230	6.577	21.542 #
18) L4 AR-1242-3	5.560	4.758	443755	370112	5.962	16.738 #
19) L4 AR-1242-4	0.000	4.840	0	143008	N.D.	6.031 #
20) L4 AR-1242-5	6.382	5.370	4053213	3304761	65.939	115.531 #
21) L5 AR-1248-1	5.474	4.587	218880	876230	3.461	38.597 #
22) L5 AR-1248-2	5.751	4.799	1302746	437797	13.756	13.466
23) L5 AR-1248-3	5.959	4.840	1844418	143008	18.710	4.243 #
24) L5 AR-1248-4	6.382	5.012	4053213	267816	38.016	6.925 #
25) L5 AR-1248-5	6.382	5.407	4053213	620337	38.585	17.132 #
26) L6 AR-1254-1	6.341	5.370	8218806	3304761	70.915	56.103
27) L6 AR-1254-2	6.559	5.514	7599846	1270060	43.694	23.704 #
28) L6 AR-1254-3	6.926	5.919	5499039	1850179	31.676	22.323 #
29) L6 AR-1254-4	7.211	6.150	2490442	904172	19.538	18.206
30) L6 AR-1254-5	7.653	6.568	6118013	2379447	43.433	31.779 #
31) L7 AR-1260-1	7.090	6.052	1683011	882187	12.006	14.654
32) L7 AR-1260-2	7.341	6.240	7226120	923281	44.666	12.780 #
33) L7 AR-1260-3	7.709	6.393	875241	685271	8.331	10.284
34) L7 AR-1260-4	7.927	6.867	1919675	386320	15.539	7.594 #
35) L7 AR-1260-5	8.252	7.111	1106520	698621	4.863	6.015
36) L8 AR-1262-1	7.709	6.604	875241	327490	5.280	4.322
37) L8 AR-1262-2	8.252	7.111	1106520	698621	3.938	5.448 #
38) L8 AR-1262-3	8.574	7.458f	964661	350276	4.913	6.432 #
39) L8 AR-1262-4	8.656	7.458	782067	350276	8.037	3.607 #
40) L8 AR-1262-5	9.286	7.953	417629	167401	3.963	3.527
41) L9 AR-1268-1	8.574	7.458f	964661	350276	2.767	2.223

Data Path : Z:\pestpcbsrv\HPCHEM1\ECD_0\Data\PO112122\
 Data File : PO090827.D
 Signal(s) : Signal #1: ECD1A.ch Signal #2: ECD2B.ch
 Acq On : 21 Nov 2022 14:30
 Operator : YP/AJ
 Sample : N5641-12
 Misc :
 ALS Vial : 22 Sample Multiplier: 1

Instrument :
 ECD_0
 ClientSampleId :

Integration File signal 1: autoint1.e
 Integration File signal 2: autoint2.e
 Quant Time: Nov 21 21:32:34 2022
 Quant Method : Z:\pestpcbsrv\HPCHEM1\ECD_0\methods\PO102722.M
 Quant Title : GC EXTRACTABLES
 QLast Update : Fri Oct 28 05:05:44 2022
 Response via : Initial Calibration
 Integrator: ChemStation

Volume Inj. : 2 µl
 Signal #1 Phase : ZB-MR1 Signal #2 Phase: ZB-MR2
 Signal #1 Info : 30Mx0.32mmx 0.50µ Signal #2 Info : 30M x 0.32mm x 0.25µm

	Compound	RT#1	RT#2	Resp#1	Resp#2	ng/ml	ng/ml
42)	L9 AR-1268-2	8.656	7.458	782067	350276	2.507	2.496
44)	L9 AR-1268-4	9.286	7.953	417629	167401	3.584	3.082
45)	L9 AR-1268-5	9.713	8.238	344600	295856	0.402	0.845 #

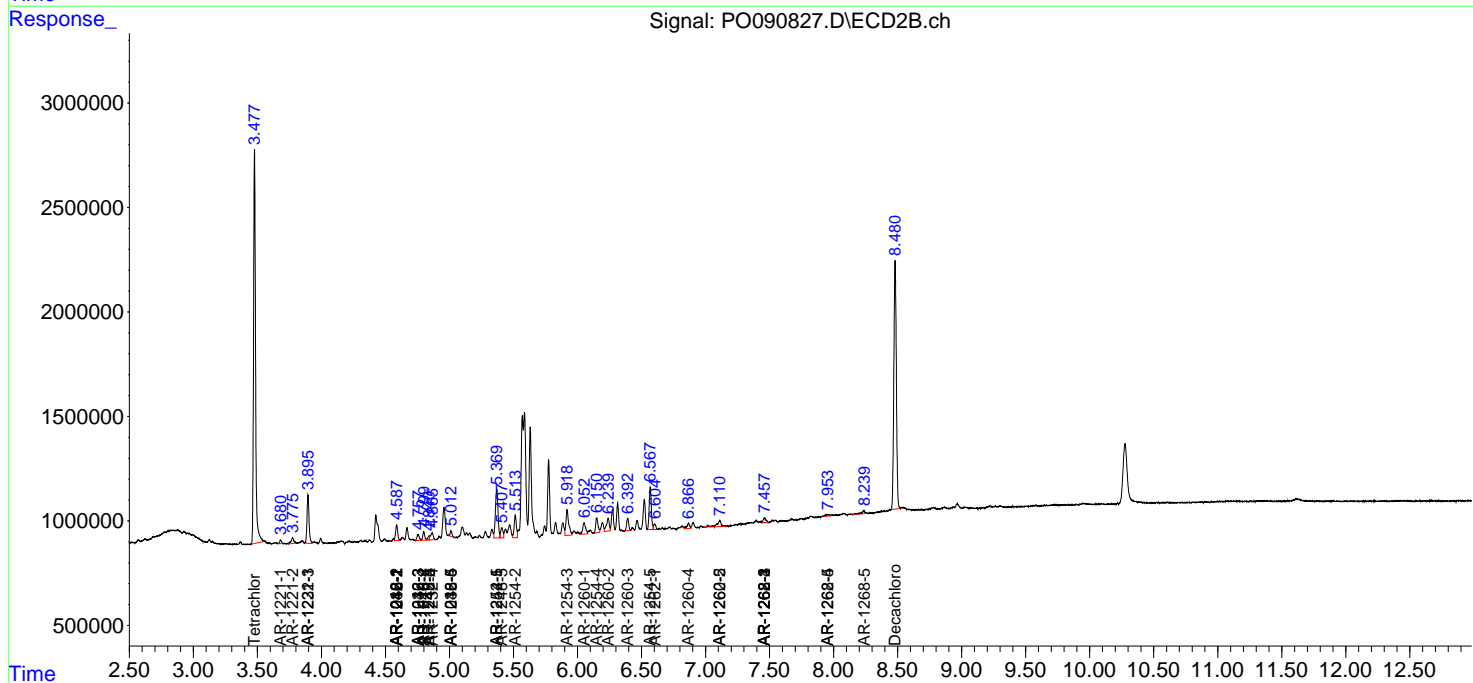
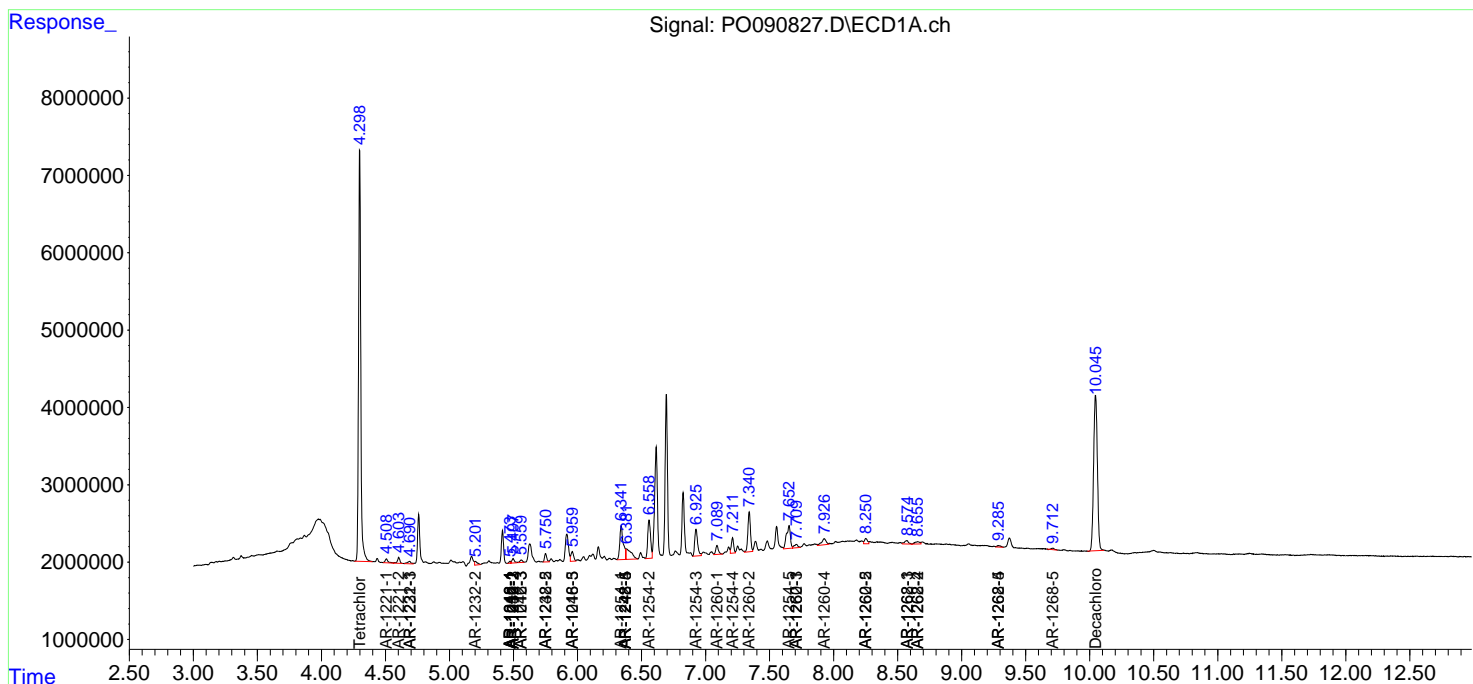
(f)=RT Delta > 1/2 Window (#)=Amounts differ by > 25% (m)=manual int.

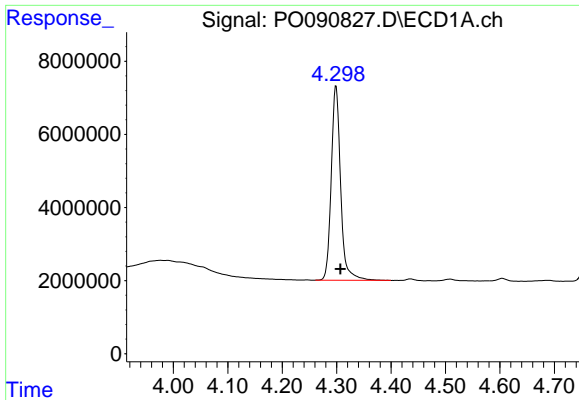
Data Path : Z:\pestpcbsrv\HPCHEM1\ECD_O\Data\PO112122\
 Data File : PO090827.D
 Signal(s) : Signal #1: ECD1A.ch Signal #2: ECD2B.ch
 Acq On : 21 Nov 2022 14:30
 Operator : YP/AJ
 Sample : N5641-12
 Misc :
 ALS Vial : 22 Sample Multiplier: 1

Instrument :
 ECD_O
 ClientSampleId :

Integration File signal 1: autoint1.e
 Integration File signal 2: autoint2.e
 Quant Time: Nov 21 21:32:34 2022
 Quant Method : Z:\pestpcbsrv\HPCHEM1\ECD_O\methods\PO102722.M
 Quant Title : GC EXTRACTABLES
 QLast Update : Fri Oct 28 05:05:44 2022
 Response via : Initial Calibration
 Integrator: ChemStation

Volume Inj. : 2 µl
 Signal #1 Phase : ZB-MR1 Signal #2 Phase: ZB-MR2
 Signal #1 Info : 30Mx0.32mmx 0.50µ Signal #2 Info : 30M x 0.32mm x 0.25µm

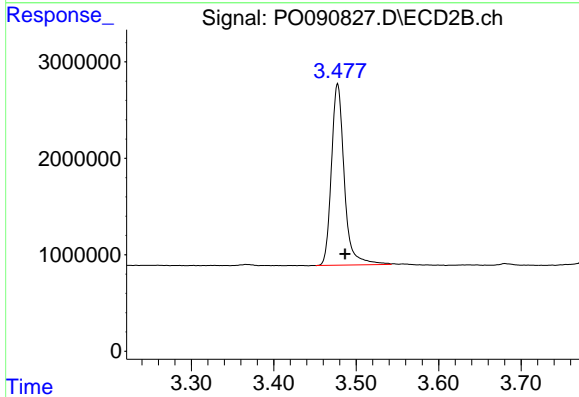




#1 Tetrachloro-m-xylene

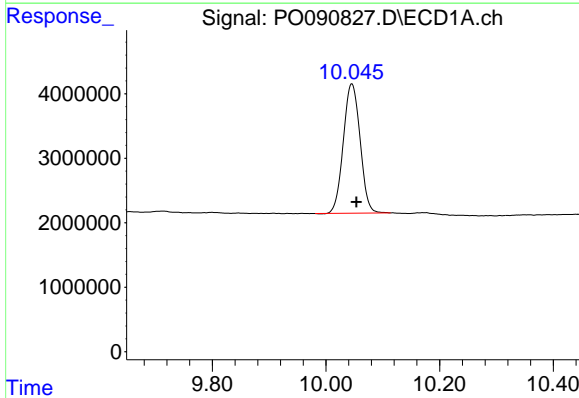
R.T.: 4.299 min
 Delta R.T.: -0.008 min
 Response: 63864430
 Conc: 19.87 ng/ml

Instrument :
 ECD_O
 ClientSampleId :



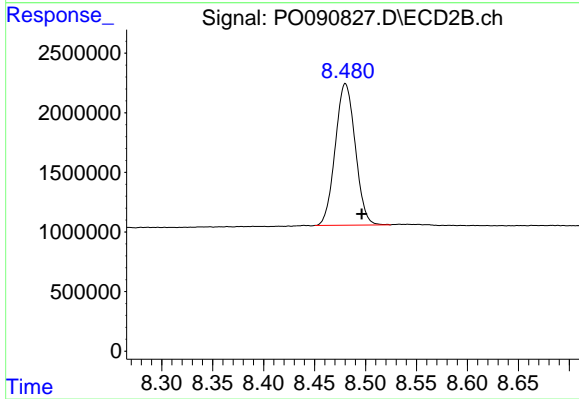
#1 Tetrachloro-m-xylene

R.T.: 3.477 min
 Delta R.T.: -0.009 min
 Response: 20368094
 Conc: 19.16 ng/ml



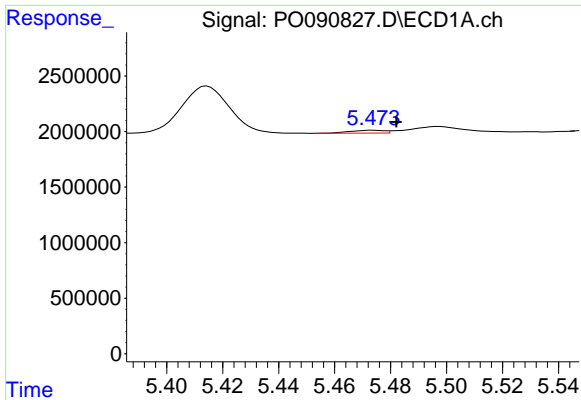
#2 Decachlorobiphenyl

R.T.: 10.046 min
 Delta R.T.: -0.008 min
 Response: 41106280
 Conc: 16.77 ng/ml



#2 Decachlorobiphenyl

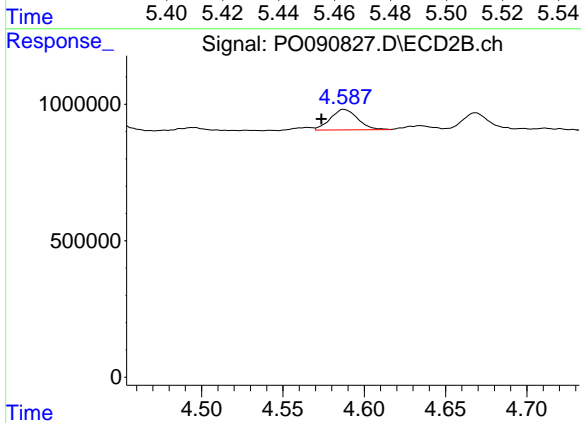
R.T.: 8.480 min
 Delta R.T.: -0.016 min
 Response: 16207296
 Conc: 15.74 ng/ml



#3 AR-1016-1

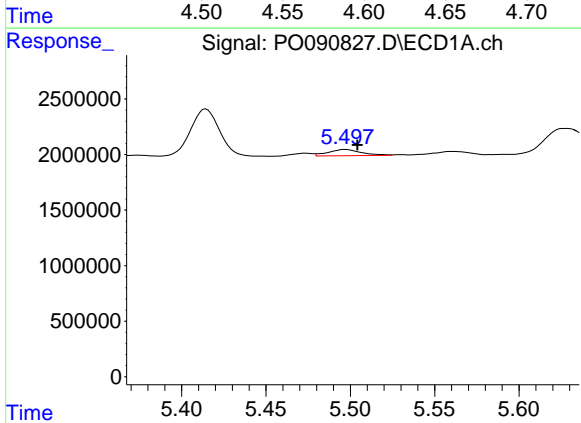
R.T.: 5.474 min
 Delta R.T.: -0.008 min
 Response: 218880
 Conc: 2.06 ng/ml

Instrument :
 ECD_O
 ClientSampleId :



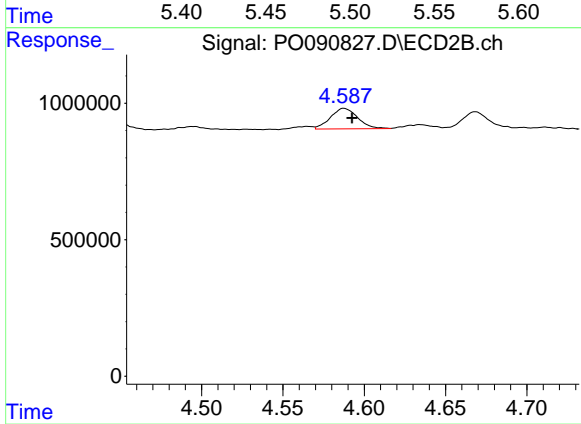
#3 AR-1016-1

R.T.: 4.587 min
 Delta R.T.: 0.014 min
 Response: 876230
 Conc: 22.68 ng/ml



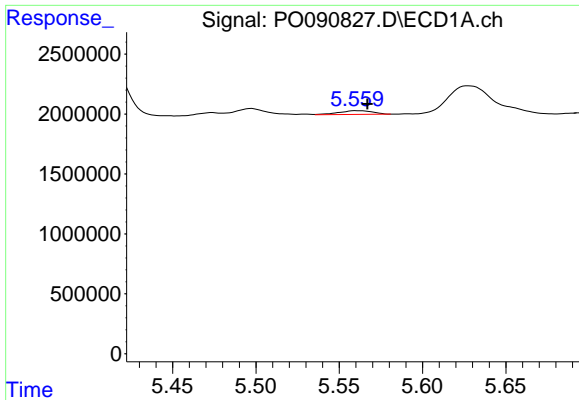
#4 AR-1016-2

R.T.: 5.497 min
 Delta R.T.: -0.007 min
 Response: 776703
 Conc: 5.10 ng/ml



#4 AR-1016-2

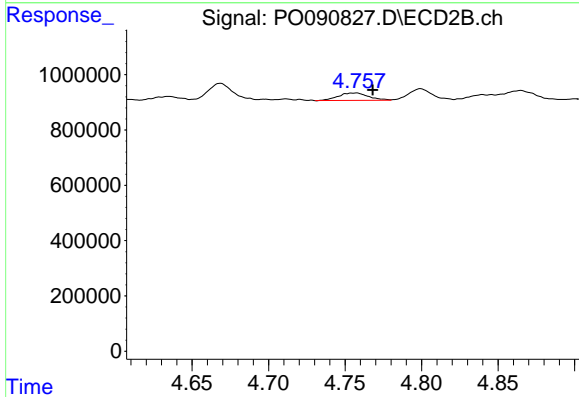
R.T.: 4.587 min
 Delta R.T.: -0.005 min
 Response: 876230
 Conc: 16.38 ng/ml



#5 AR-1016-3

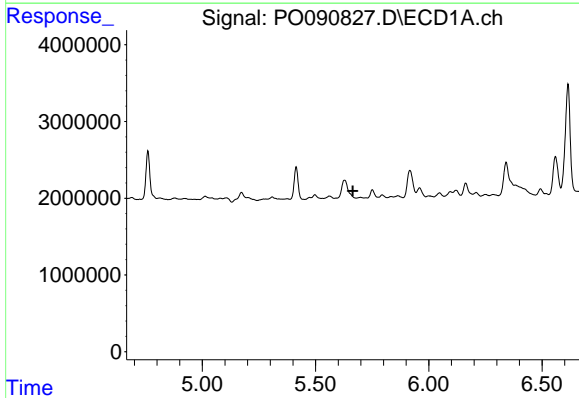
R.T.: 5.560 min
 Delta R.T.: -0.007 min
 Response: 443755
 Conc: 4.70 ng/ml

Instrument :
 ECD_O
 ClientSampleId :



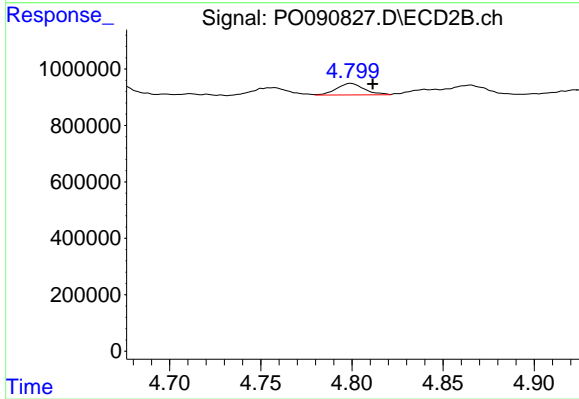
#5 AR-1016-3

R.T.: 4.758 min
 Delta R.T.: -0.011 min
 Response: 370112
 Conc: 12.75 ng/ml



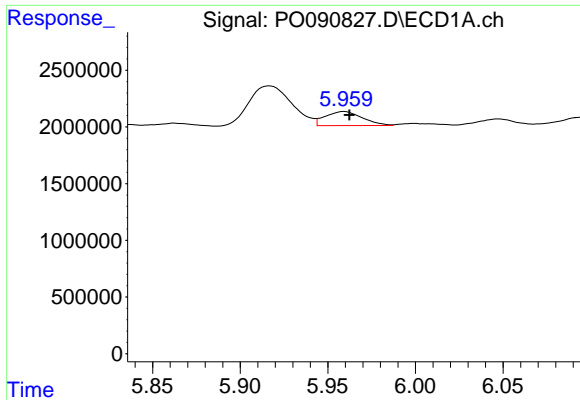
#6 AR-1016-4

R.T.: 0.000 min
 Exp R.T. : 5.665 min
 Response: 0
 Conc: N.D.



#6 AR-1016-4

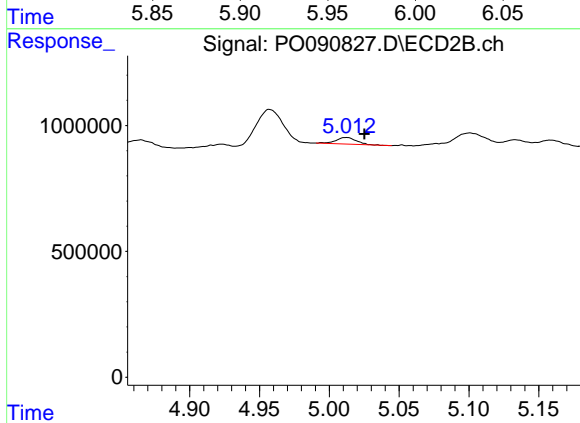
R.T.: 4.799 min
 Delta R.T.: -0.012 min
 Response: 437797
 Conc: 17.64 ng/ml



#7 AR-1016-5

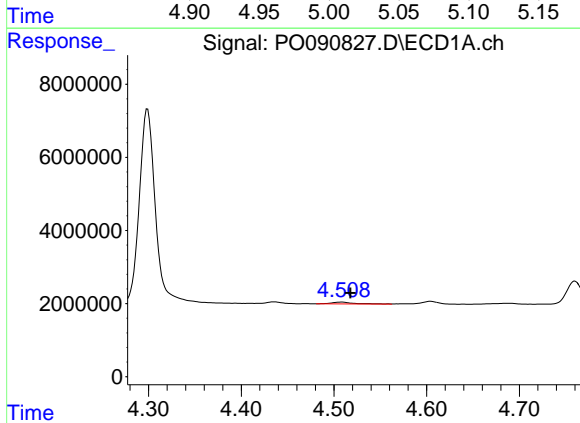
R.T.: 5.959 min
 Delta R.T.: -0.003 min
 Response: 1844418
 Conc: 23.90 ng/ml

Instrument :
 ECD_O
 ClientSampleId :



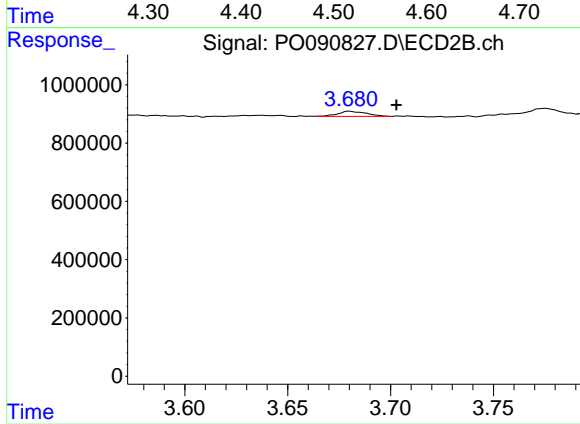
#7 AR-1016-5

R.T.: 5.012 min
 Delta R.T.: -0.013 min
 Response: 267816
 Conc: 8.72 ng/ml



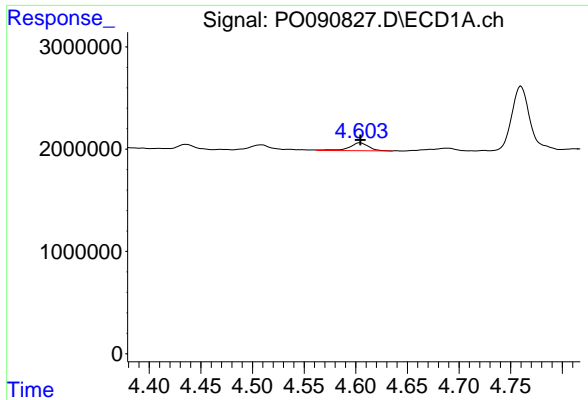
#8 AR-1221-1

R.T.: 4.508 min
 Delta R.T.: -0.009 min
 Response: 783772
 Conc: 20.53 ng/ml



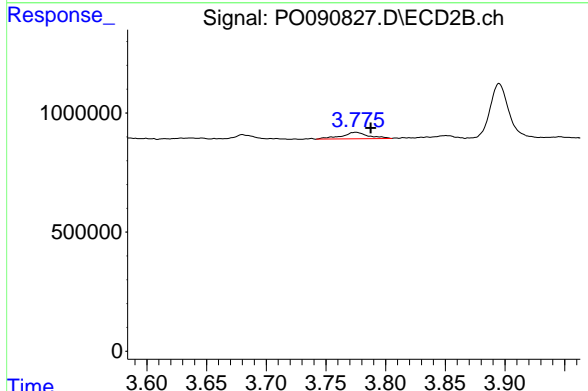
#8 AR-1221-1

R.T.: 3.680 min
 Delta R.T.: -0.023 min
 Response: 166048
 Conc: 12.43 ng/ml

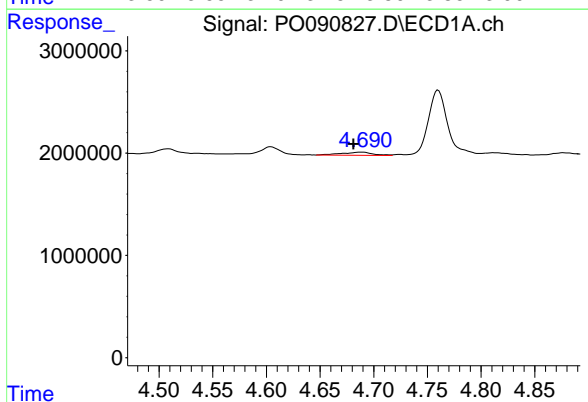


#9 AR-1221-2
 R.T.: 4.604 min
 Delta R.T.: 0.000 min
 Response: 1002224
 Conc: 35.25 ng/ml

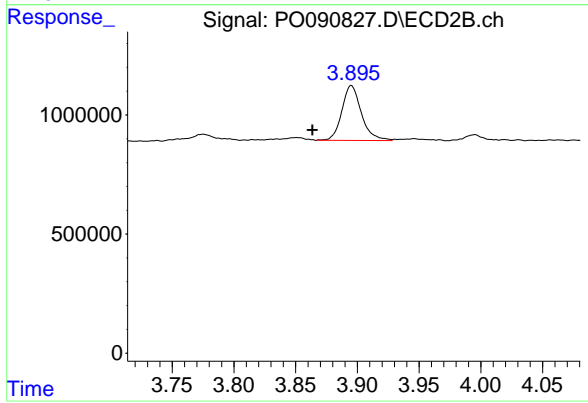
Instrument :
 ECD_O
 ClientSampleId :



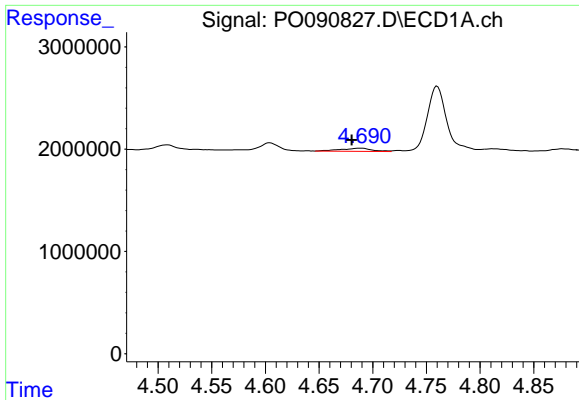
#9 AR-1221-2
 R.T.: 3.775 min
 Delta R.T.: -0.012 min
 Response: 424962
 Conc: 41.87 ng/ml



#10 AR-1221-3
 R.T.: 4.690 min
 Delta R.T.: 0.009 min
 Response: 608289
 Conc: 7.10 ng/ml



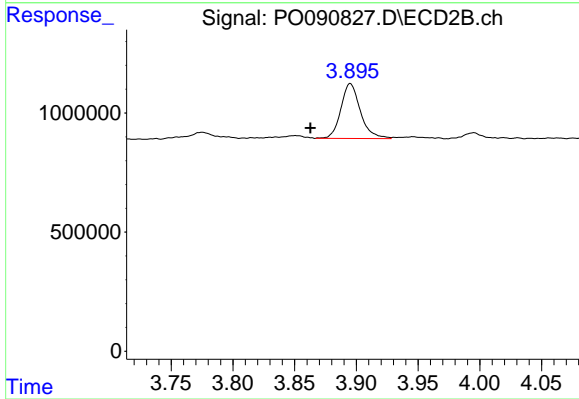
#10 AR-1221-3
 R.T.: 3.895 min
 Delta R.T.: 0.031 min
 Response: 2540500
 Conc: 81.67 ng/ml



#11 AR-1232-1

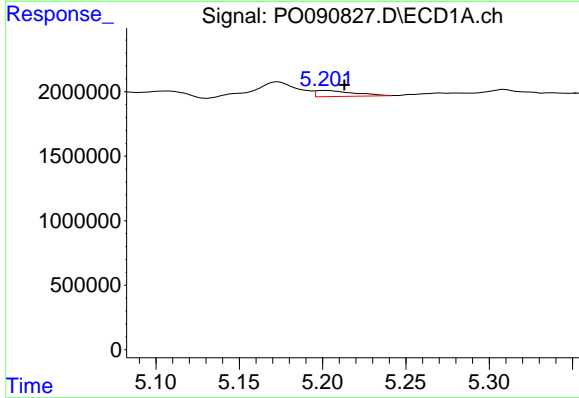
R.T.: 4.690 min
 Delta R.T.: 0.009 min
 Response: 608289
 Conc: 9.29 ng/ml

Instrument :
 ECD_O
 ClientSampleId :



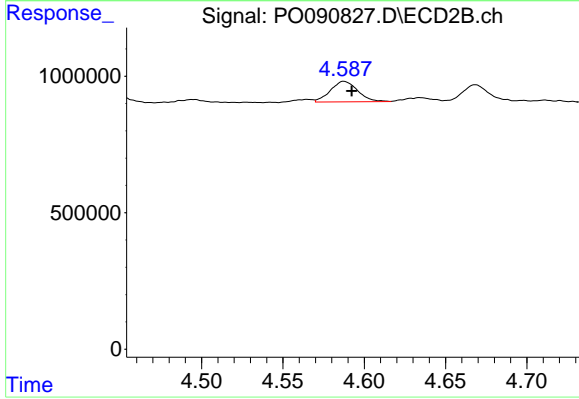
#11 AR-1232-1

R.T.: 3.895 min
 Delta R.T.: 0.032 min
 Response: 2540500
 Conc: 106.79 ng/ml



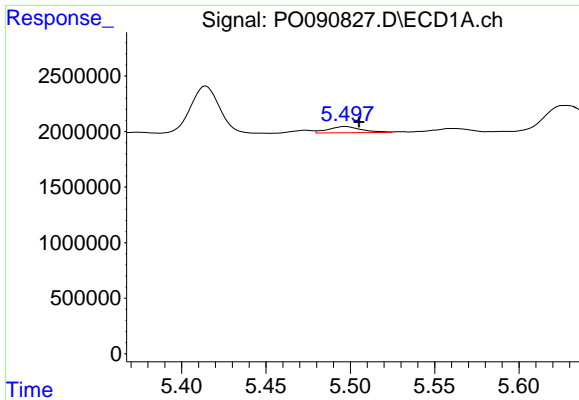
#12 AR-1232-2

R.T.: 5.202 min
 Delta R.T.: -0.011 min
 Response: 730095
 Conc: 18.99 ng/ml



#12 AR-1232-2

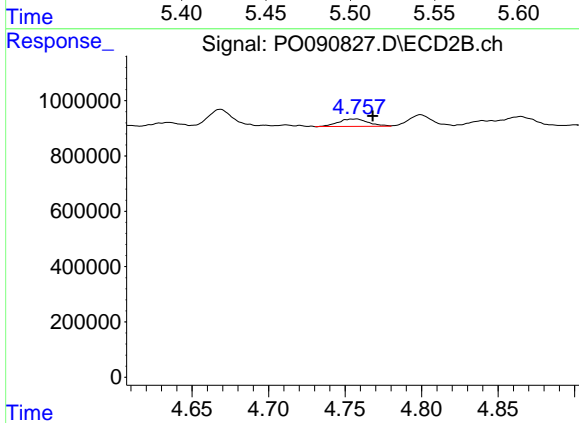
R.T.: 4.587 min
 Delta R.T.: -0.005 min
 Response: 876230
 Conc: 36.57 ng/ml



#13 AR-1232-3

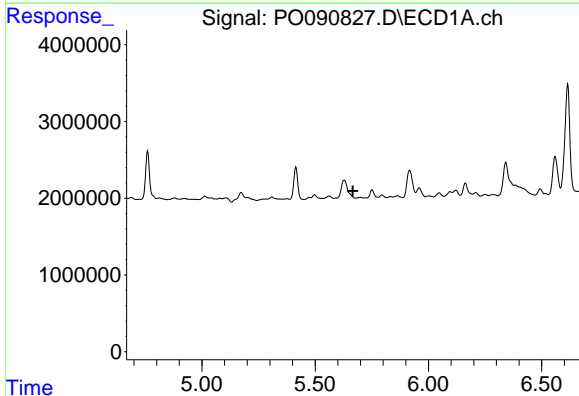
R.T.: 5.497 min
 Delta R.T.: -0.008 min
 Response: 776703
 Conc: 11.59 ng/ml

Instrument :
 ECD_O
 ClientSampleId :



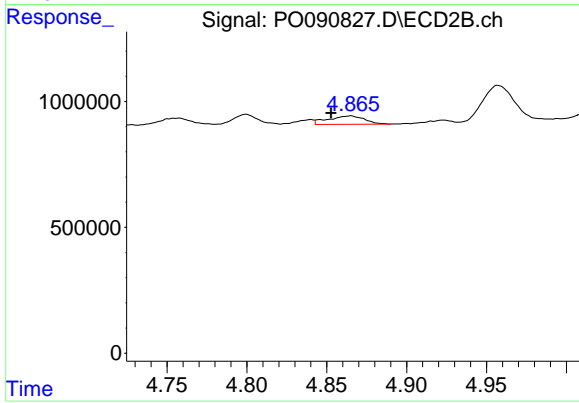
#13 AR-1232-3

R.T.: 4.758 min
 Delta R.T.: -0.010 min
 Response: 370112
 Conc: 29.15 ng/ml



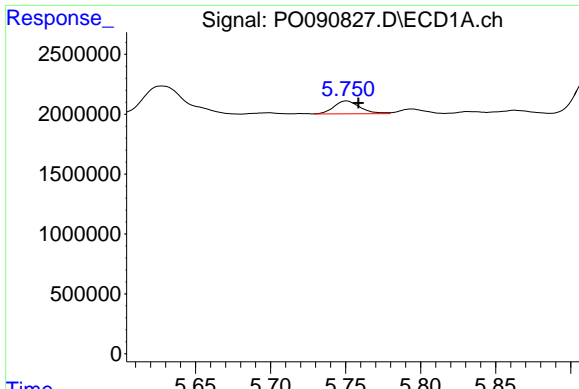
#14 AR-1232-4

R.T.: 0.000 min
 Exp R.T. : 5.666 min
 Response: 0
 Conc: N.D.



#14 AR-1232-4

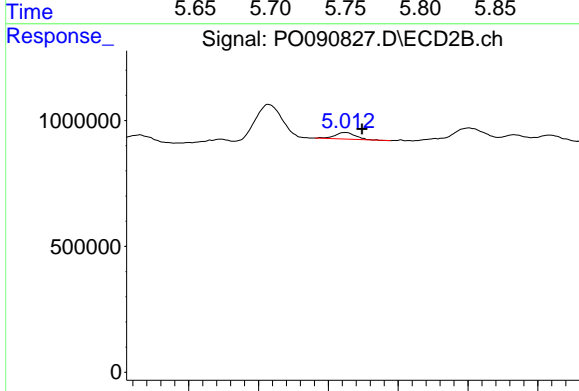
R.T.: 4.865 min
 Delta R.T.: 0.012 min
 Response: 523234
 Conc: 42.91 ng/ml



#15 AR-1232-5

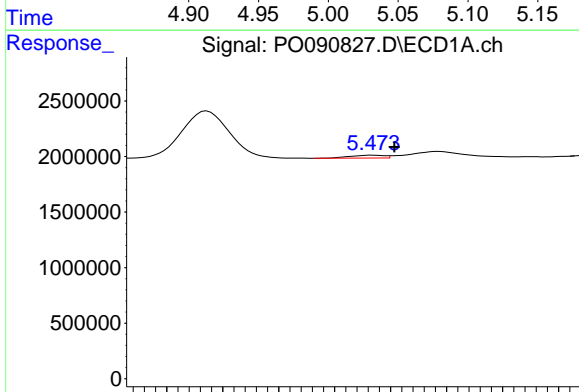
R.T.: 5.751 min
 Delta R.T.: -0.008 min
 Response: 1302746
 Conc: 49.17 ng/ml

Instrument :
 ECD_O
 ClientSampleId :



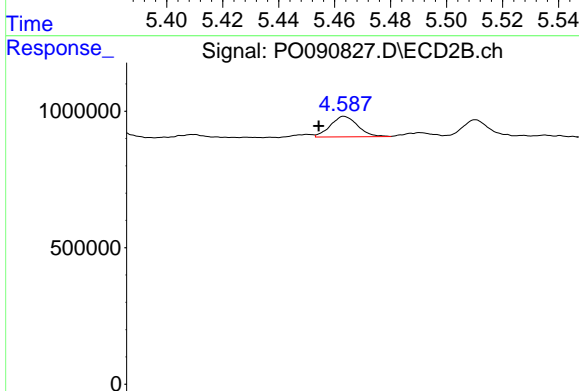
#15 AR-1232-5

R.T.: 5.012 min
 Delta R.T.: -0.012 min
 Response: 267816
 Conc: 20.06 ng/ml



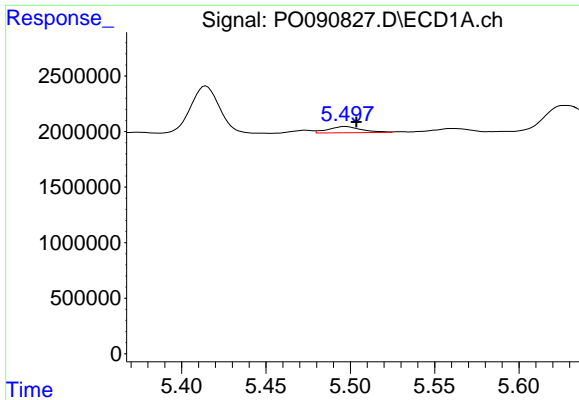
#16 AR-1242-1

R.T.: 5.474 min
 Delta R.T.: -0.007 min
 Response: 218880
 Conc: 2.65 ng/ml



#16 AR-1242-1

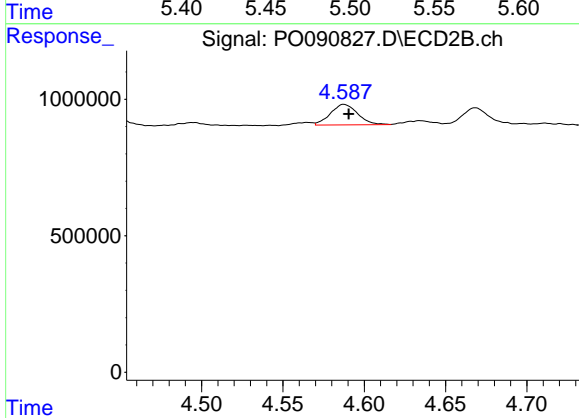
R.T.: 4.587 min
 Delta R.T.: 0.015 min
 Response: 876230
 Conc: 29.43 ng/ml



#17 AR-1242-2

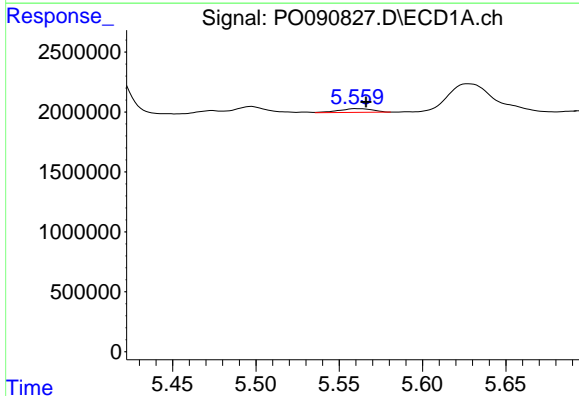
R.T.: 5.497 min
 Delta R.T.: -0.006 min
 Response: 776703
 Conc: 6.58 ng/ml

Instrument :
 ECD_O
 ClientSampleId :



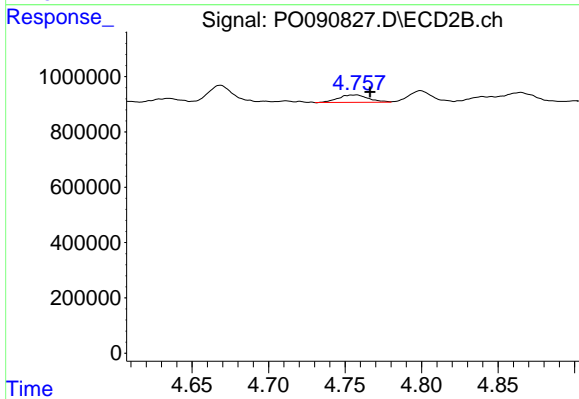
#17 AR-1242-2

R.T.: 4.587 min
 Delta R.T.: -0.003 min
 Response: 876230
 Conc: 21.54 ng/ml



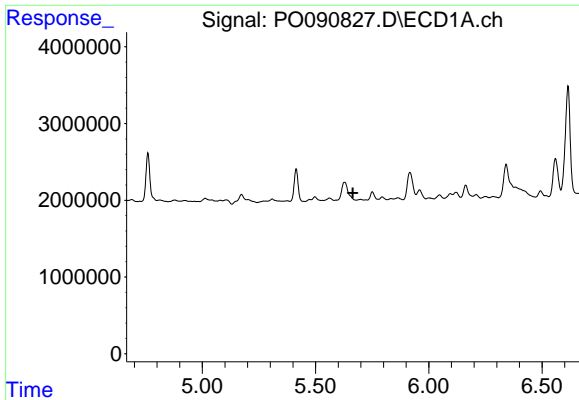
#18 AR-1242-3

R.T.: 5.560 min
 Delta R.T.: -0.006 min
 Response: 443755
 Conc: 5.96 ng/ml



#18 AR-1242-3

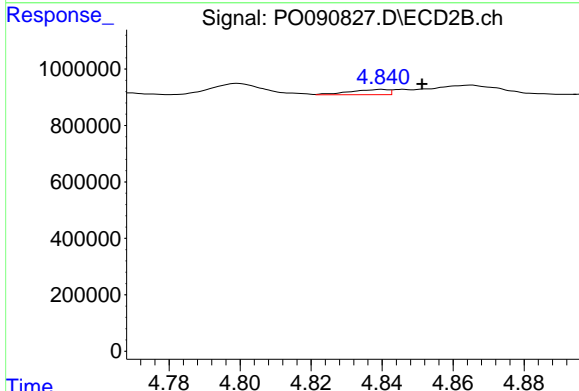
R.T.: 4.758 min
 Delta R.T.: -0.009 min
 Response: 370112
 Conc: 16.74 ng/ml



#19 AR-1242-4

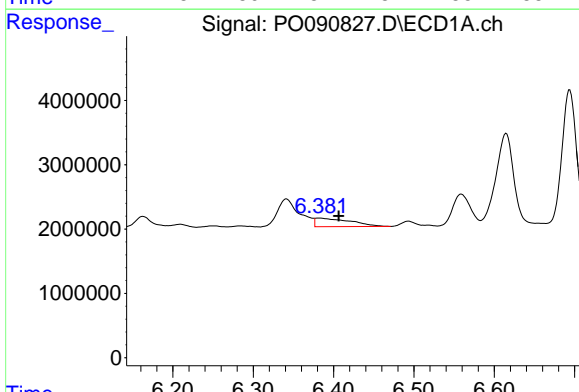
R.T.: 0.000 min
 Exp R.T.: 5.665 min
 Response: 0
 Conc: N.D.

Instrument :
 ECD_O
 ClientSampleId :



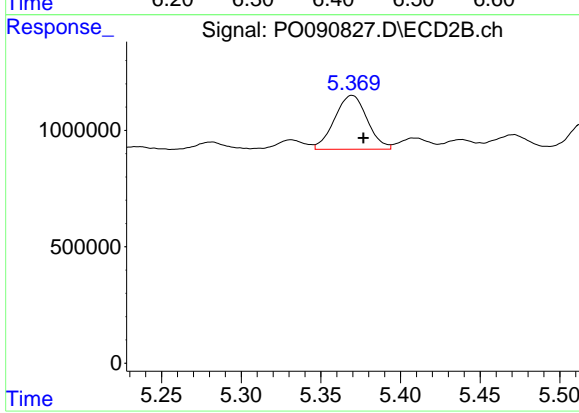
#19 AR-1242-4

R.T.: 4.840 min
 Delta R.T.: -0.011 min
 Response: 143008
 Conc: 6.03 ng/ml



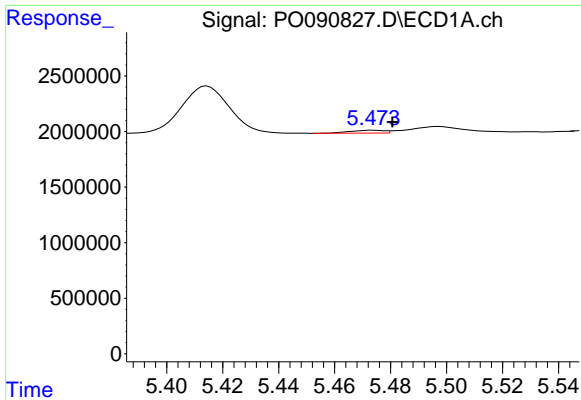
#20 AR-1242-5

R.T.: 6.382 min
 Delta R.T.: -0.024 min
 Response: 4053213
 Conc: 65.94 ng/ml



#20 AR-1242-5

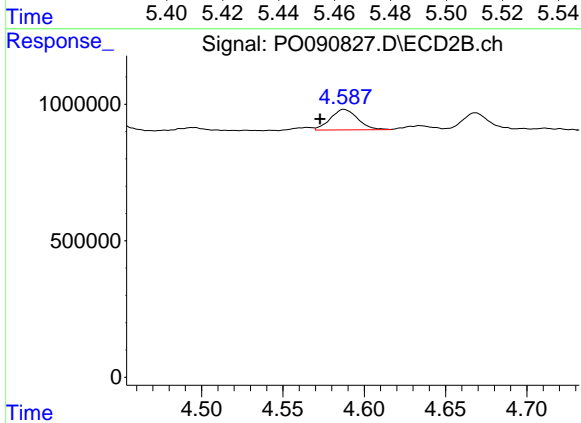
R.T.: 5.370 min
 Delta R.T.: -0.007 min
 Response: 3304761
 Conc: 115.53 ng/ml



#21 AR-1248-1

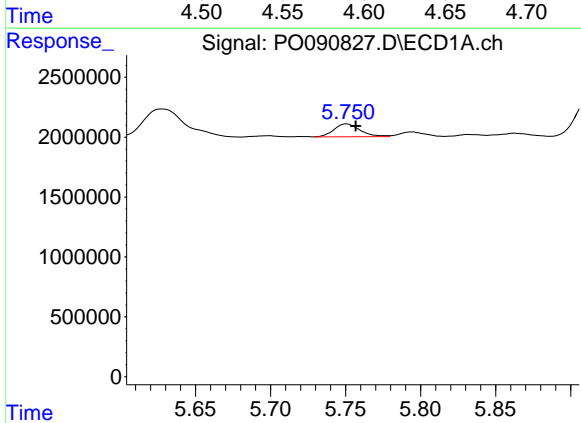
R.T.: 5.474 min
 Delta R.T.: -0.007 min
 Response: 218880
 Conc: 3.46 ng/ml

Instrument :
 ECD_O
 ClientSampleId :



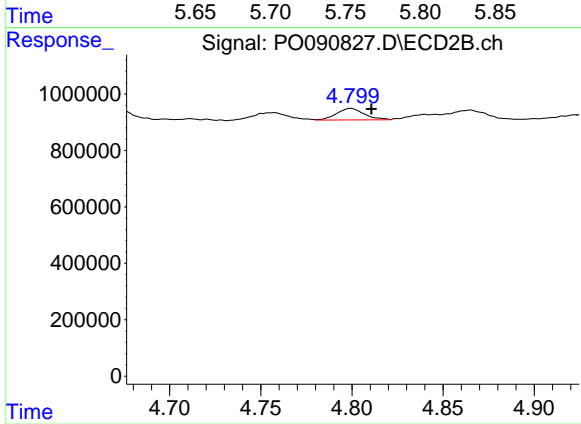
#21 AR-1248-1

R.T.: 4.587 min
 Delta R.T.: 0.015 min
 Response: 876230
 Conc: 38.60 ng/ml



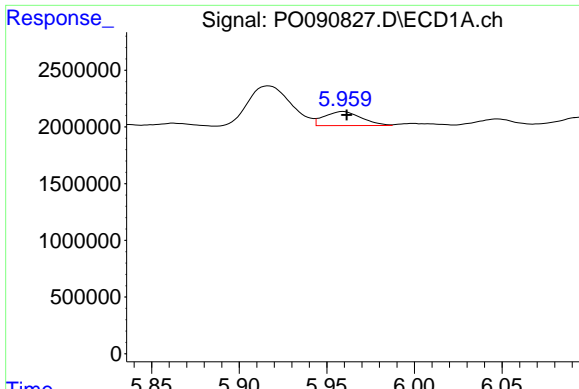
#22 AR-1248-2

R.T.: 5.751 min
 Delta R.T.: -0.006 min
 Response: 1302746
 Conc: 13.76 ng/ml



#22 AR-1248-2

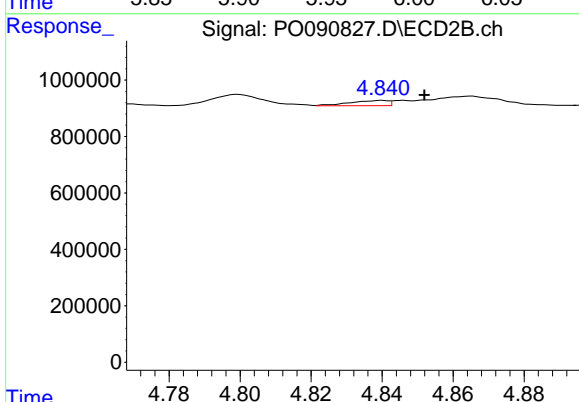
R.T.: 4.799 min
 Delta R.T.: -0.011 min
 Response: 437797
 Conc: 13.47 ng/ml



#23 AR-1248-3

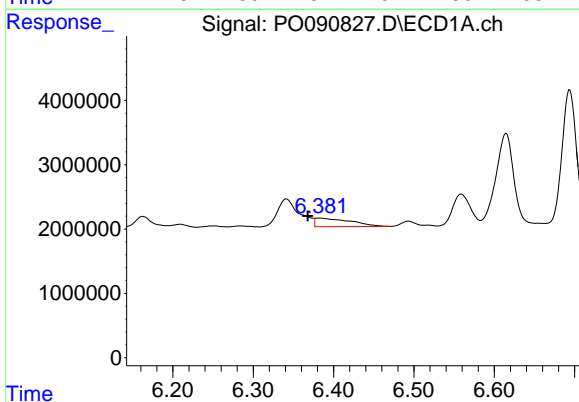
R.T.: 5.959 min
 Delta R.T.: -0.002 min
 Response: 1844418
 Conc: 18.71 ng/ml

Instrument :
 ECD_O
 ClientSampleId :



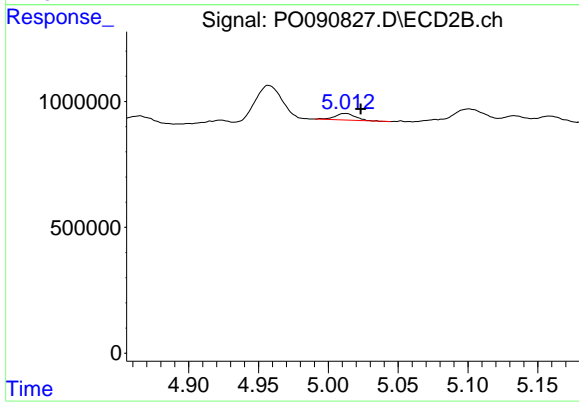
#23 AR-1248-3

R.T.: 4.840 min
 Delta R.T.: -0.012 min
 Response: 143008
 Conc: 4.24 ng/ml



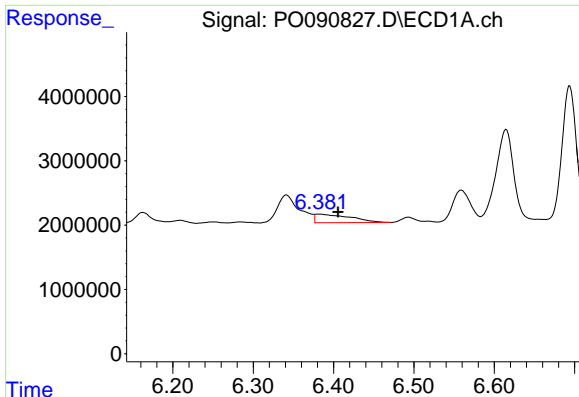
#24 AR-1248-4

R.T.: 6.382 min
 Delta R.T.: 0.015 min
 Response: 4053213
 Conc: 38.02 ng/ml



#24 AR-1248-4

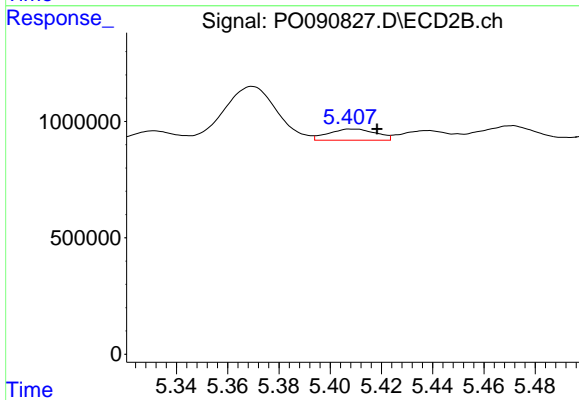
R.T.: 5.012 min
 Delta R.T.: -0.011 min
 Response: 267816
 Conc: 6.93 ng/ml



#25 AR-1248-5

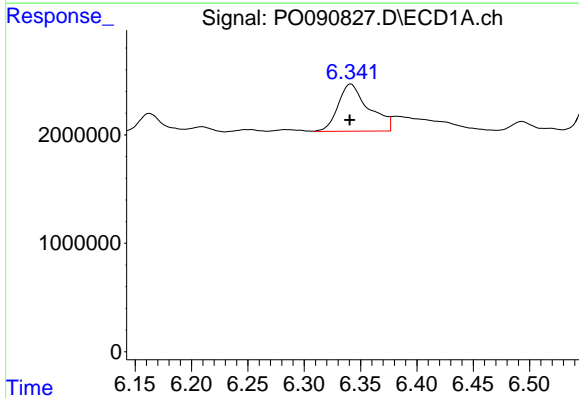
R.T.: 6.382 min
 Delta R.T.: -0.023 min
 Response: 4053213
 Conc: 38.59 ng/ml

Instrument :
 ECD_O
 ClientSampleId :



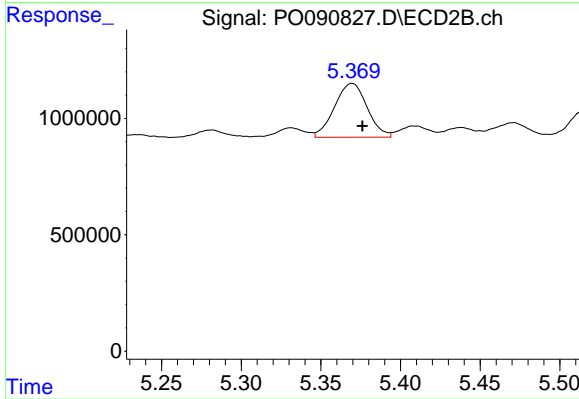
#25 AR-1248-5

R.T.: 5.407 min
 Delta R.T.: -0.011 min
 Response: 620337
 Conc: 17.13 ng/ml



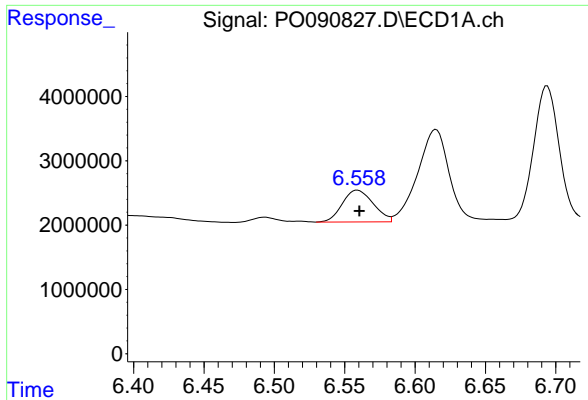
#26 AR-1254-1

R.T.: 6.341 min
 Delta R.T.: 0.001 min
 Response: 8218806
 Conc: 70.91 ng/ml



#26 AR-1254-1

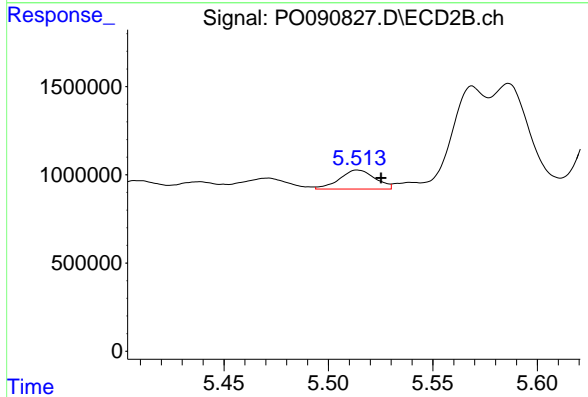
R.T.: 5.370 min
 Delta R.T.: -0.007 min
 Response: 3304761
 Conc: 56.10 ng/ml



#27 AR-1254-2

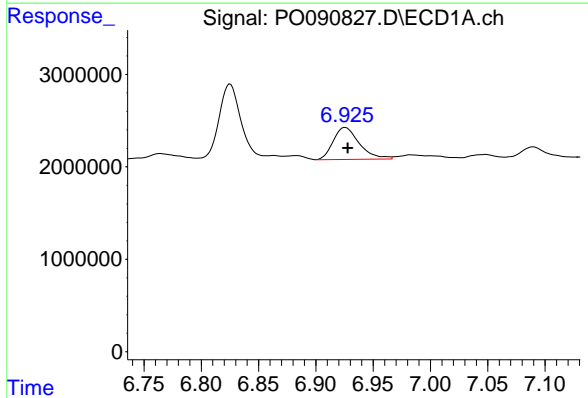
R.T.: 6.559 min
 Delta R.T.: -0.001 min
 Response: 7599846
 Conc: 43.69 ng/ml

Instrument :
 ECD_O
 ClientSampleId :



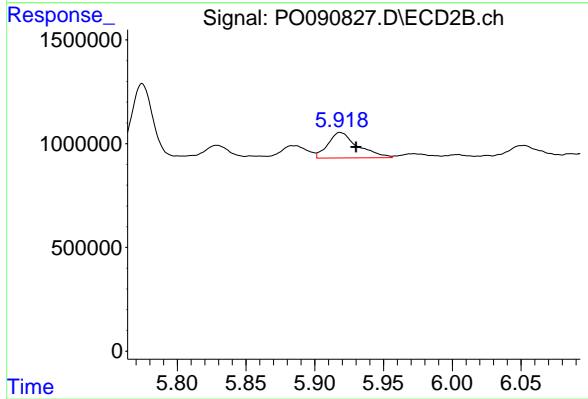
#27 AR-1254-2

R.T.: 5.514 min
 Delta R.T.: -0.011 min
 Response: 1270060
 Conc: 23.70 ng/ml



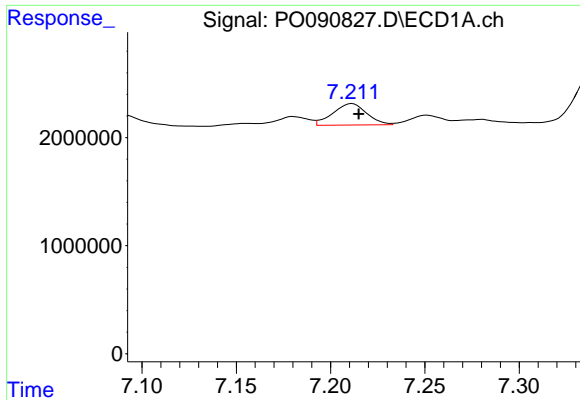
#28 AR-1254-3

R.T.: 6.926 min
 Delta R.T.: -0.002 min
 Response: 5499039
 Conc: 31.68 ng/ml



#28 AR-1254-3

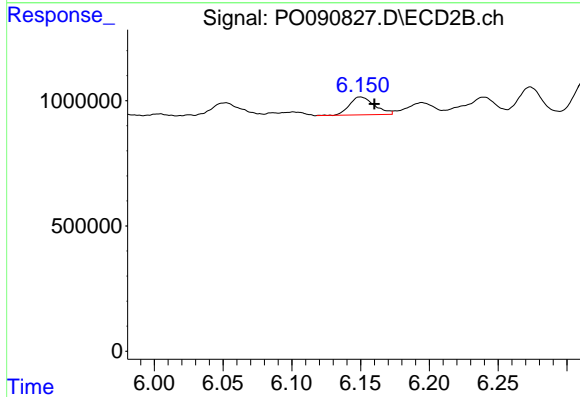
R.T.: 5.919 min
 Delta R.T.: -0.011 min
 Response: 1850179
 Conc: 22.32 ng/ml



#29 AR-1254-4

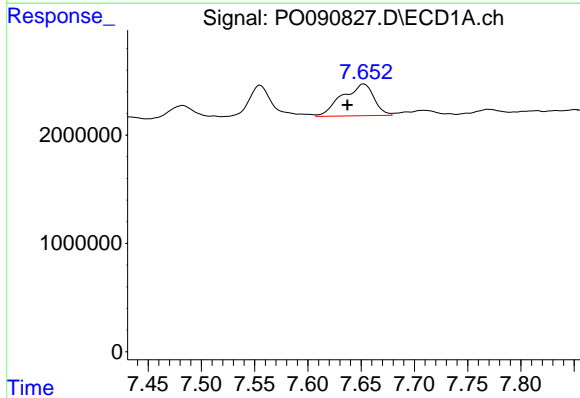
R.T.: 7.211 min
 Delta R.T.: -0.003 min
 Response: 2490442
 Conc: 19.54 ng/ml

Instrument :
 ECD_O
 ClientSampleId :



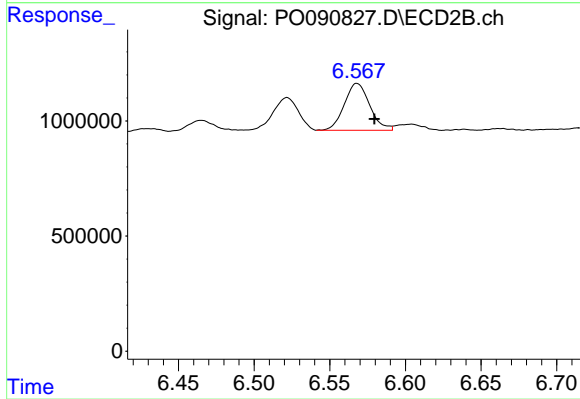
#29 AR-1254-4

R.T.: 6.150 min
 Delta R.T.: -0.010 min
 Response: 904172
 Conc: 18.21 ng/ml



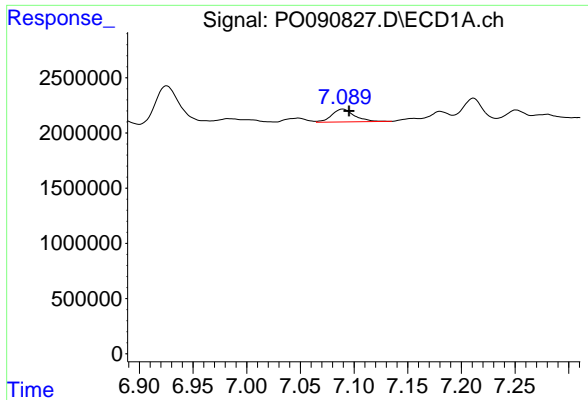
#30 AR-1254-5

R.T.: 7.653 min
 Delta R.T.: 0.016 min
 Response: 6118013
 Conc: 43.43 ng/ml



#30 AR-1254-5

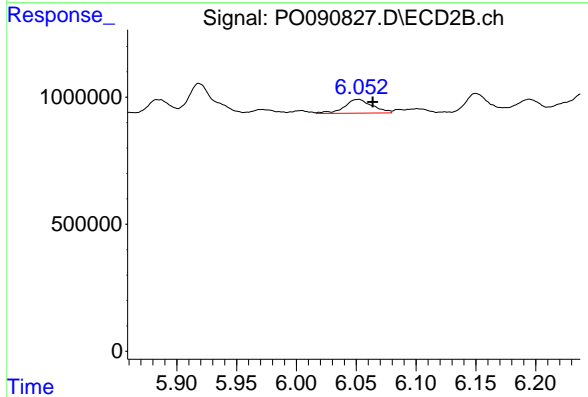
R.T.: 6.568 min
 Delta R.T.: -0.011 min
 Response: 2379447
 Conc: 31.78 ng/ml



#31 AR-1260-1

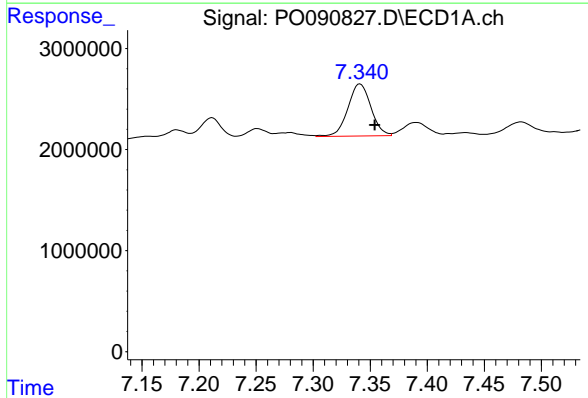
R.T.: 7.090 min
 Delta R.T.: -0.006 min
 Response: 1683011
 Conc: 12.01 ng/ml

Instrument :
 ECD_O
 ClientSampleId :



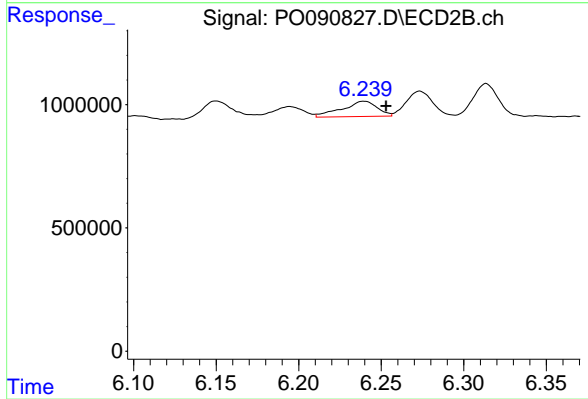
#31 AR-1260-1

R.T.: 6.052 min
 Delta R.T.: -0.012 min
 Response: 882187
 Conc: 14.65 ng/ml



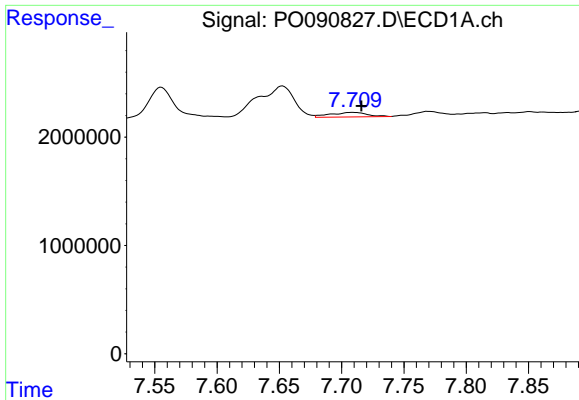
#32 AR-1260-2

R.T.: 7.341 min
 Delta R.T.: -0.013 min
 Response: 7226120
 Conc: 44.67 ng/ml



#32 AR-1260-2

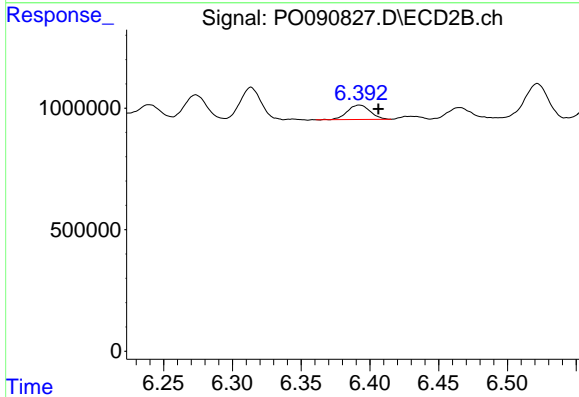
R.T.: 6.240 min
 Delta R.T.: -0.013 min
 Response: 923281
 Conc: 12.78 ng/ml



#33 AR-1260-3

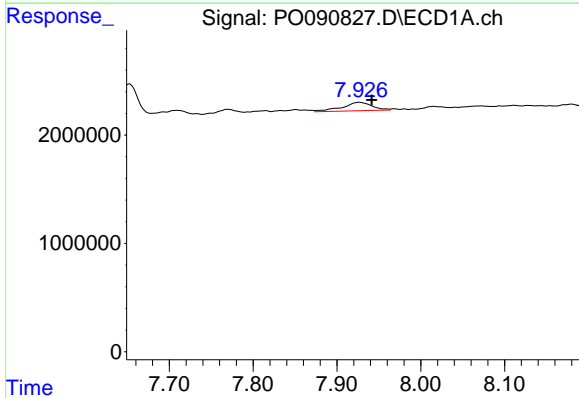
R.T.: 7.709 min
 Delta R.T.: -0.006 min
 Response: 875241
 Conc: 8.33 ng/ml

Instrument :
 ECD_O
 ClientSampleId :



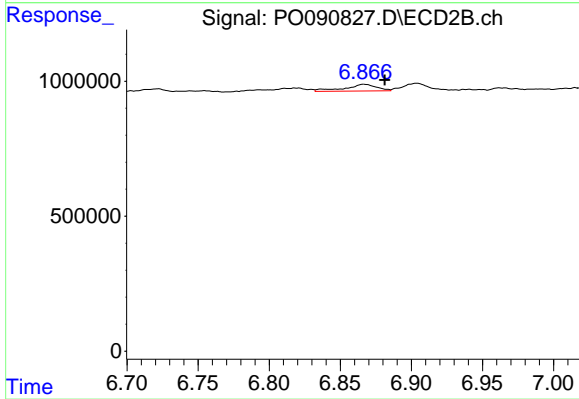
#33 AR-1260-3

R.T.: 6.393 min
 Delta R.T.: -0.014 min
 Response: 685271
 Conc: 10.28 ng/ml



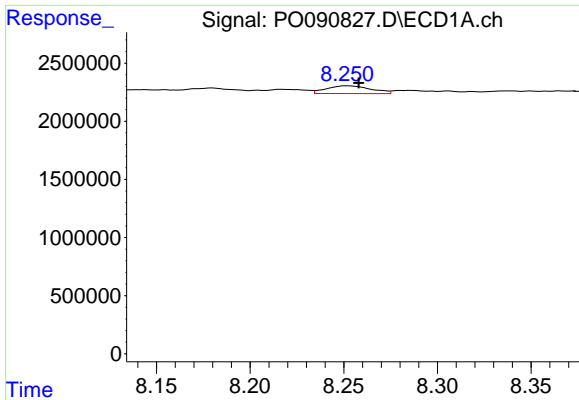
#34 AR-1260-4

R.T.: 7.927 min
 Delta R.T.: -0.015 min
 Response: 1919675
 Conc: 15.54 ng/ml



#34 AR-1260-4

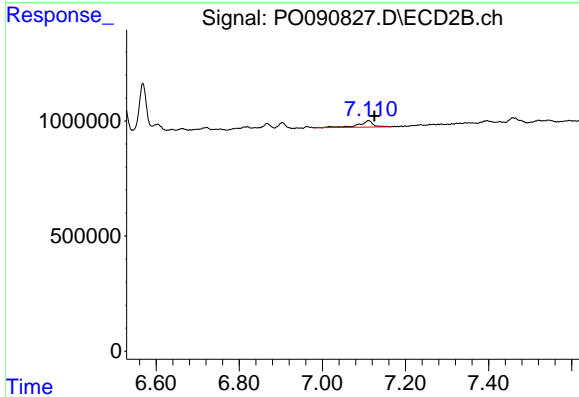
R.T.: 6.867 min
 Delta R.T.: -0.015 min
 Response: 386320
 Conc: 7.59 ng/ml



#35 AR-1260-5

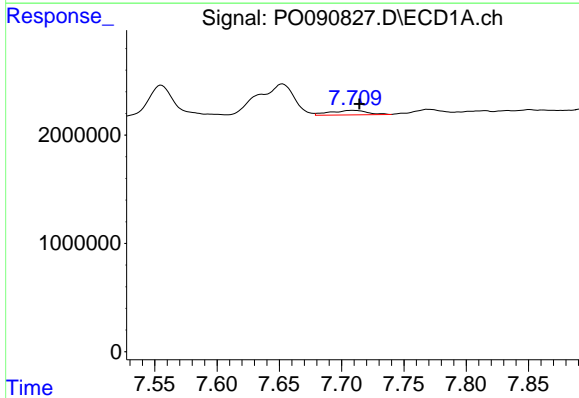
R.T.: 8.252 min
 Delta R.T.: -0.006 min
 Response: 1106520
 Conc: 4.86 ng/ml

Instrument :
 ECD_O
 ClientSampleId :



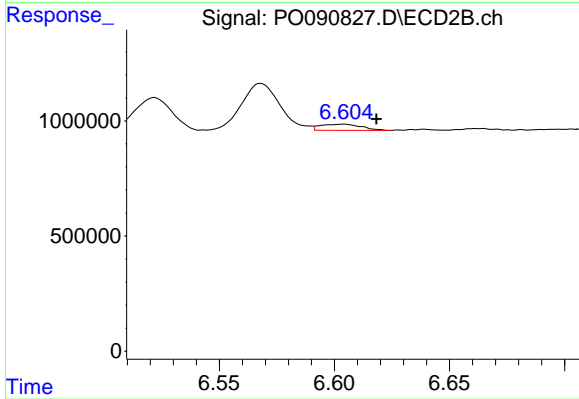
#35 AR-1260-5

R.T.: 7.111 min
 Delta R.T.: -0.014 min
 Response: 698621
 Conc: 6.01 ng/ml



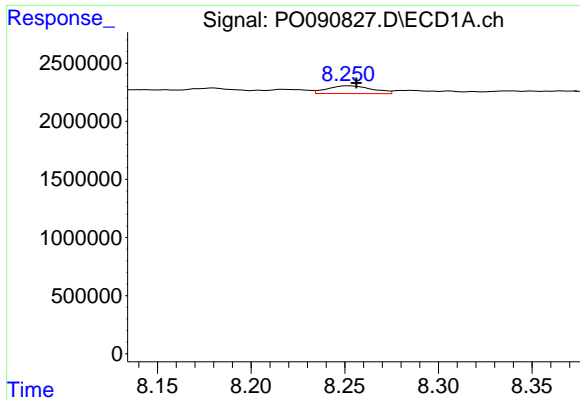
#36 AR-1262-1

R.T.: 7.709 min
 Delta R.T.: -0.005 min
 Response: 875241
 Conc: 5.28 ng/ml



#36 AR-1262-1

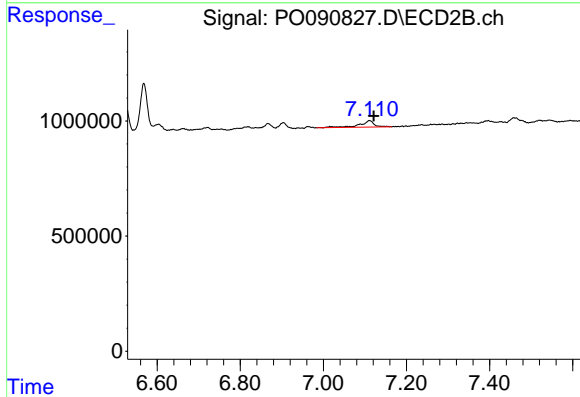
R.T.: 6.604 min
 Delta R.T.: -0.014 min
 Response: 327490
 Conc: 4.32 ng/ml



#37 AR-1262-2

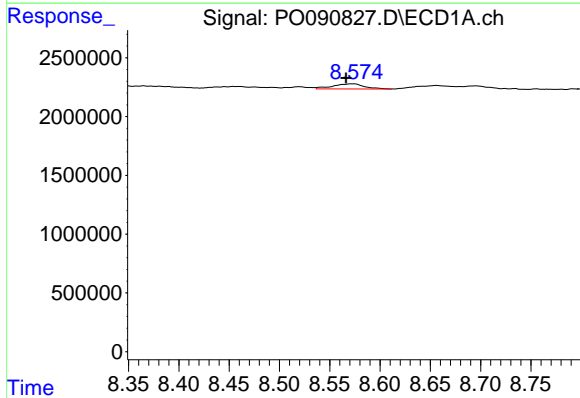
R.T.: 8.252 min
 Delta R.T.: -0.004 min
 Response: 1106520
 Conc: 3.94 ng/ml

Instrument :
 ECD_O
 ClientSampleId :



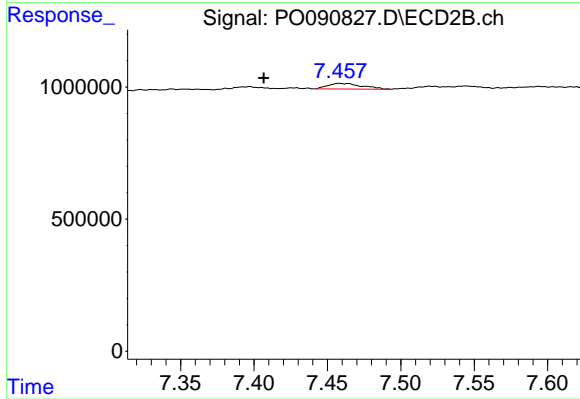
#37 AR-1262-2

R.T.: 7.111 min
 Delta R.T.: -0.010 min
 Response: 698621
 Conc: 5.45 ng/ml



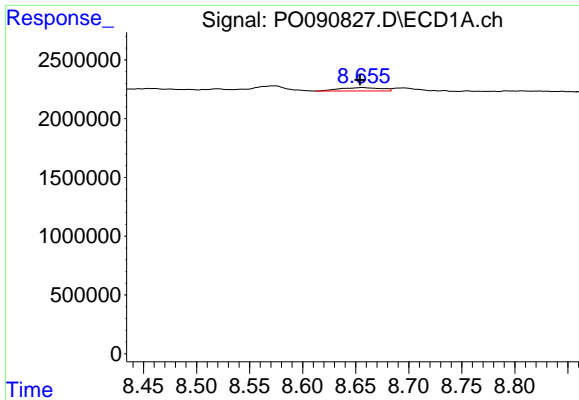
#38 AR-1262-3

R.T.: 8.574 min
 Delta R.T.: 0.007 min
 Response: 964661
 Conc: 4.91 ng/ml



#38 AR-1262-3

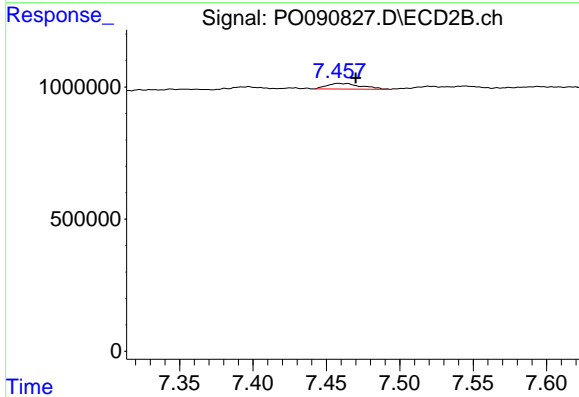
R.T.: 7.458 min
 Delta R.T.: 0.051 min
 Response: 350276
 Conc: 6.43 ng/ml



#39 AR-1262-4

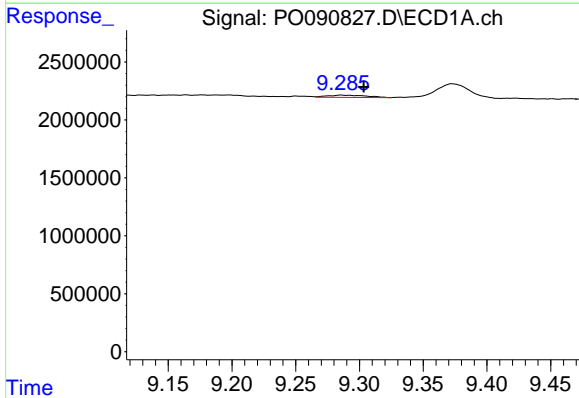
R.T.: 8.656 min
 Delta R.T.: 0.002 min
 Response: 782067
 Conc: 8.04 ng/ml

Instrument :
 ECD_O
 ClientSampleId :



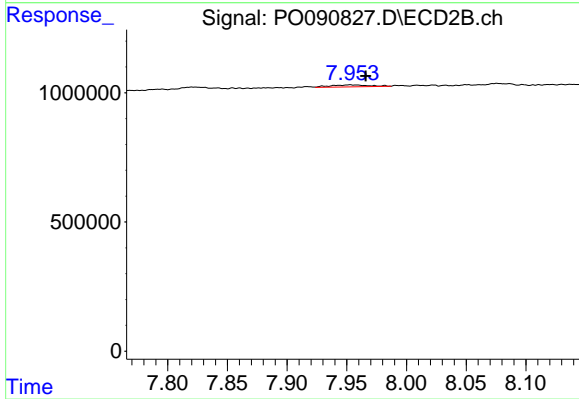
#39 AR-1262-4

R.T.: 7.458 min
 Delta R.T.: -0.012 min
 Response: 350276
 Conc: 3.61 ng/ml



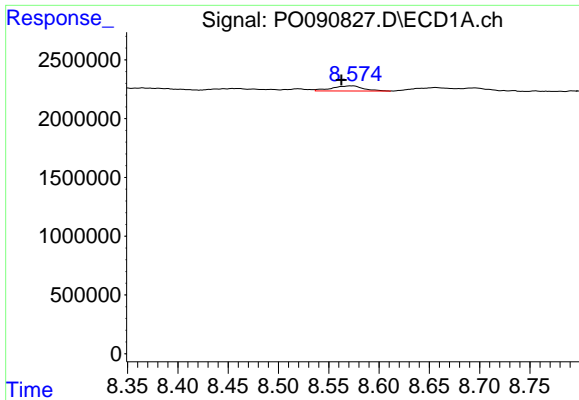
#40 AR-1262-5

R.T.: 9.286 min
 Delta R.T.: -0.017 min
 Response: 417629
 Conc: 3.96 ng/ml



#40 AR-1262-5

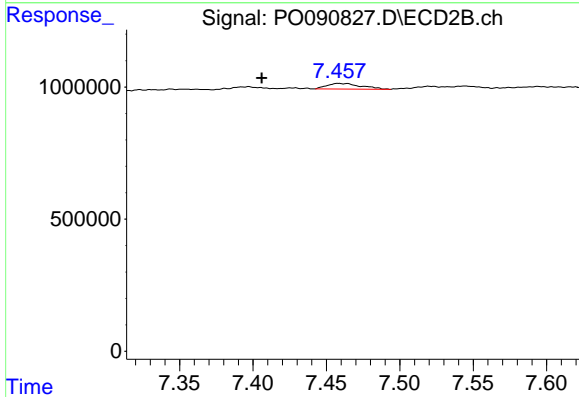
R.T.: 7.953 min
 Delta R.T.: -0.013 min
 Response: 167401
 Conc: 3.53 ng/ml



#41 AR-1268-1

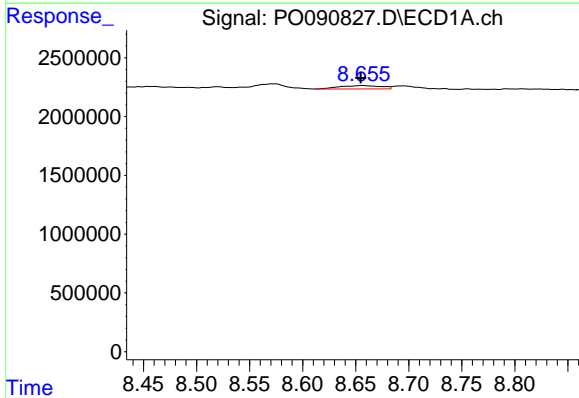
R.T.: 8.574 min
 Delta R.T.: 0.011 min
 Response: 964661
 Conc: 2.77 ng/ml

Instrument :
 ECD_O
 ClientSampleId :



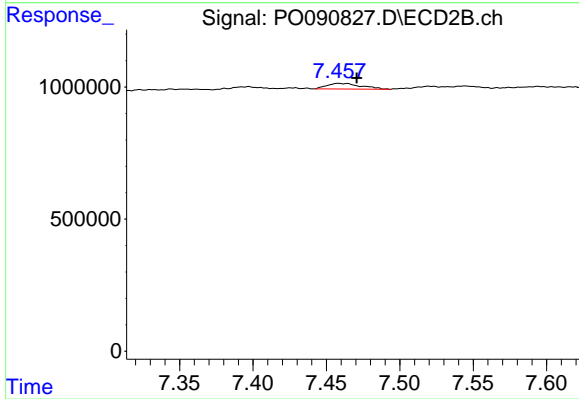
#41 AR-1268-1

R.T.: 7.458 min
 Delta R.T.: 0.052 min
 Response: 350276
 Conc: 2.22 ng/ml



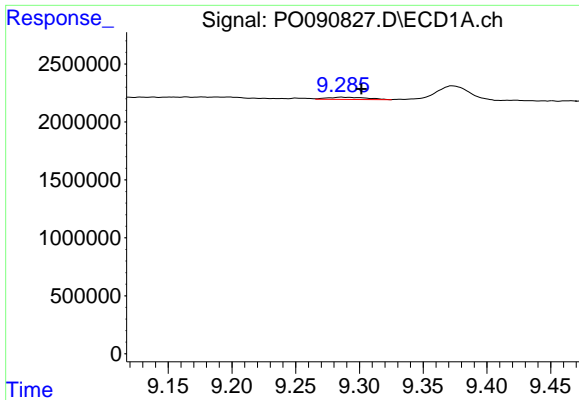
#42 AR-1268-2

R.T.: 8.656 min
 Delta R.T.: 0.001 min
 Response: 782067
 Conc: 2.51 ng/ml



#42 AR-1268-2

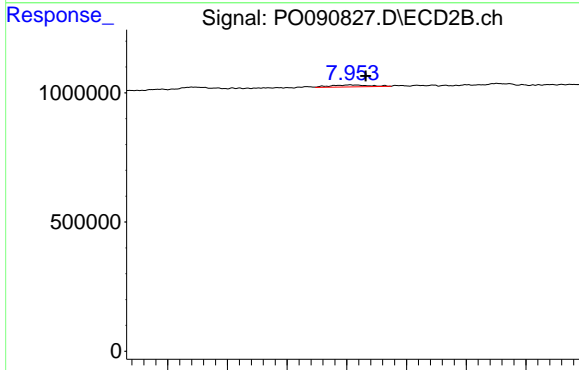
R.T.: 7.458 min
 Delta R.T.: -0.013 min
 Response: 350276
 Conc: 2.50 ng/ml



#44 AR-1268-4

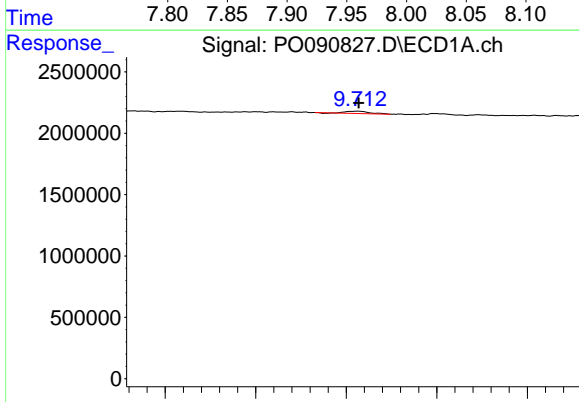
R.T.: 9.286 min
 Delta R.T.: -0.016 min
 Response: 417629
 Conc: 3.58 ng/ml

Instrument :
 ECD_O
 ClientSampleId :



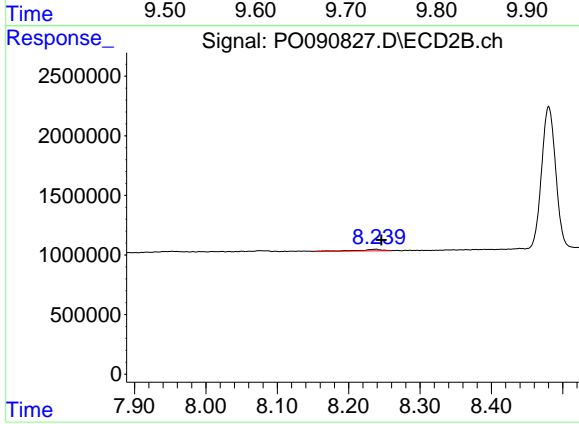
#44 AR-1268-4

R.T.: 7.953 min
 Delta R.T.: -0.013 min
 Response: 167401
 Conc: 3.08 ng/ml



#45 AR-1268-5

R.T.: 9.713 min
 Delta R.T.: -0.001 min
 Response: 344600
 Conc: 0.40 ng/ml



#45 AR-1268-5

R.T.: 8.238 min
 Delta R.T.: -0.008 min
 Response: 295856
 Conc: 0.85 ng/ml