

Data Path : Z:\pestpcbsrv\HPCHEM1\ECD_0\Data\PO112122\
 Data File : PO090842.D
 Signal(s) : Signal #1: ECD1A.ch Signal #2: ECD2B.ch
 Acq On : 21 Nov 2022 19:00
 Operator : YP/AJ
 Sample : N5719-02 10X
 Misc :
 ALS Vial : 31 Sample Multiplier: 1

Instrument :
 ECD_0
 ClientSampleId :
 BC136902-1-2

Integration File signal 1: autoint1.e
 Integration File signal 2: autoint2.e
 Quant Time: Nov 21 21:46:38 2022
 Quant Method : Z:\pestpcbsrv\HPCHEM1\ECD_0\methods\PO102722.M
 Quant Title : GC EXTRACTABLES
 QLast Update : Fri Oct 28 05:05:44 2022
 Response via : Initial Calibration
 Integrator: ChemStation

Volume Inj. : 2 µl
 Signal #1 Phase : ZB-MR1 Signal #2 Phase: ZB-MR2
 Signal #1 Info : 30Mx0.32mmx 0.50µ Signal #2 Info : 30M x 0.32mm x 0.25µm

Compound	RT#1	RT#2	Resp#1	Resp#2	ng/ml	ng/ml

System Monitoring Compounds						
1) SA Tetrachlo...	4.299	3.477	4331524	1493185	1.348	1.405
2) SA Decachlor...	10.044	8.480	3954944	1581080	1.614	1.535

Target Compounds

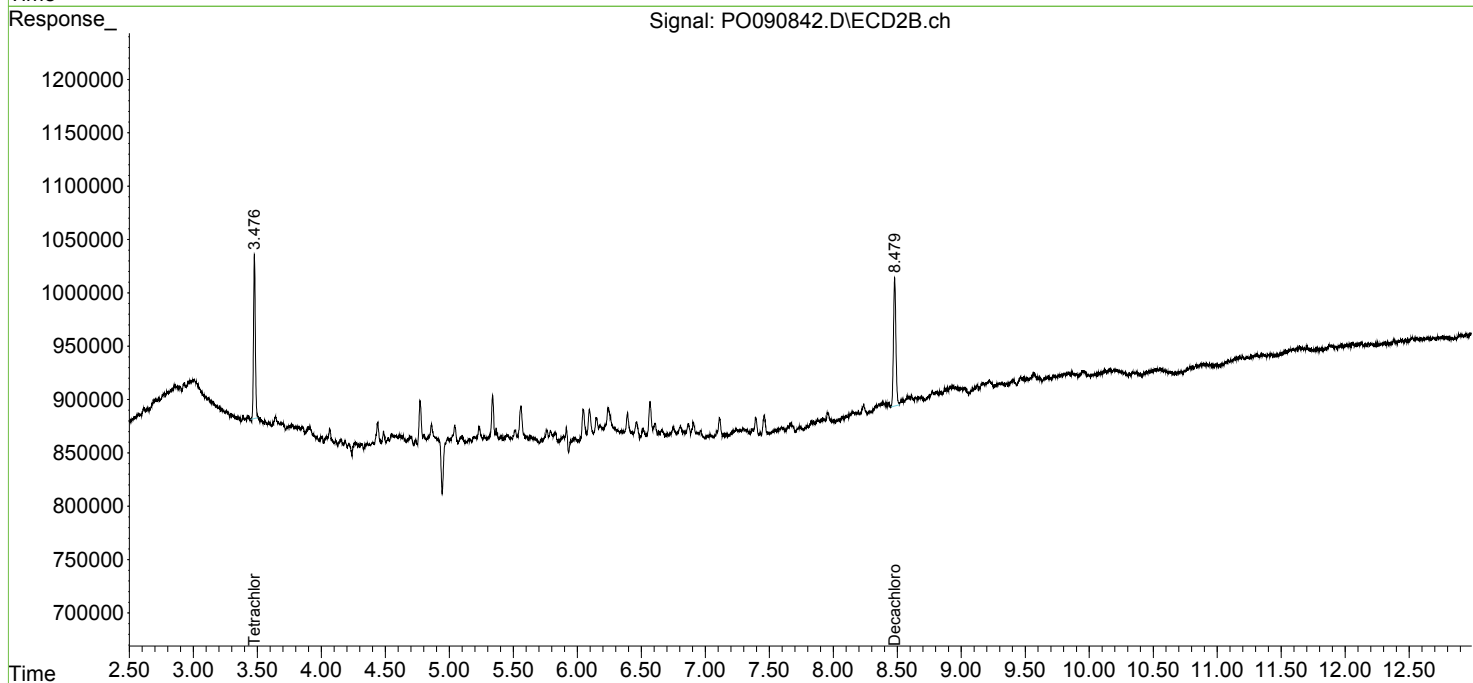
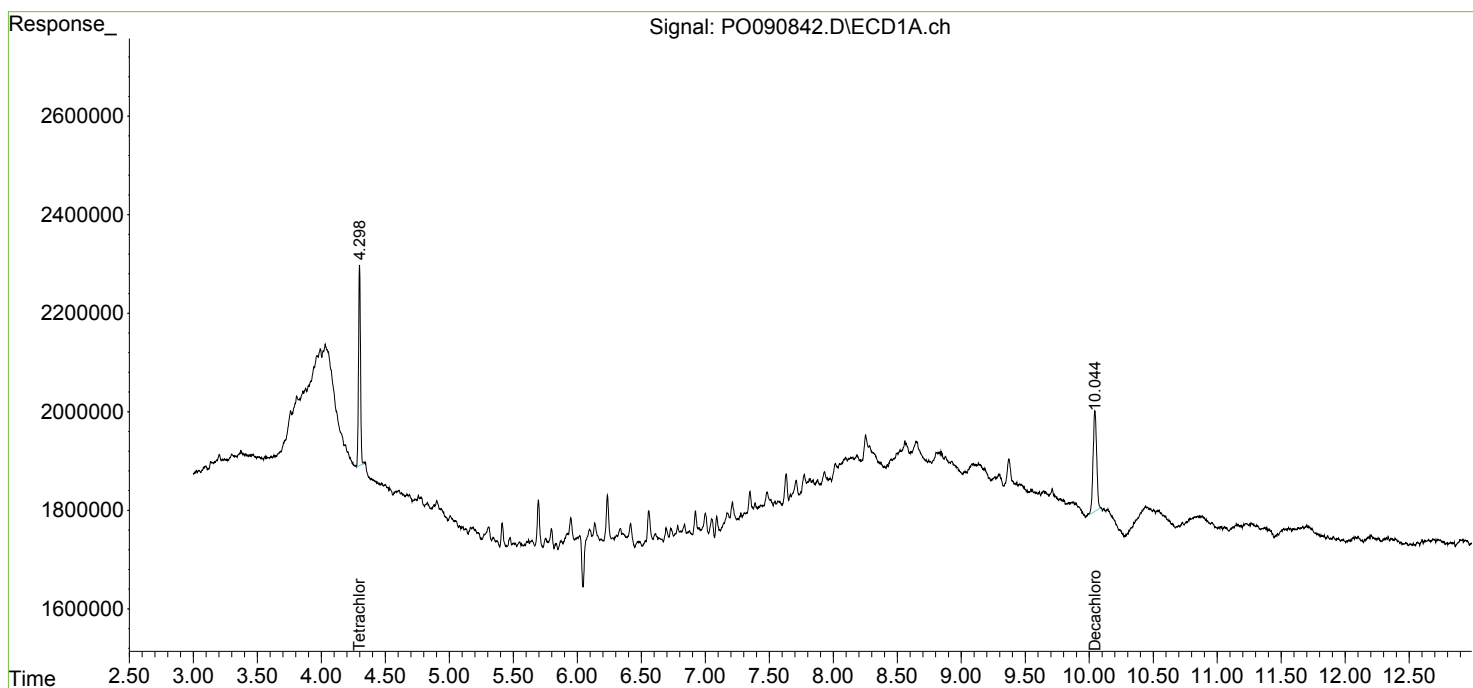
 (f)=RT Delta > 1/2 Window (#)=Amounts differ by > 25% (m)=manual int.

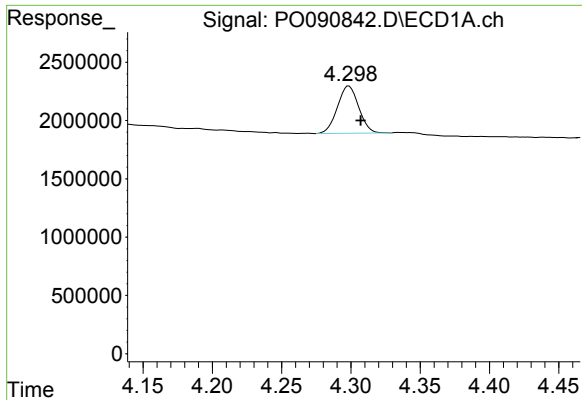
Data Path : Z:\pestpcbsrv\HPCHEM1\ECD_O\Data\PO112122\
 Data File : PO090842.D
 Signal(s) : Signal #1: ECD1A.ch Signal #2: ECD2B.ch
 Acq On : 21 Nov 2022 19:00
 Operator : YP/AJ
 Sample : N5719-02 10X
 Misc :
 ALS Vial : 31 Sample Multiplier: 1

Instrument :
 ECD_O
 ClientSampleId :
 BC136902-1-2

Integration File signal 1: autoint1.e
 Integration File signal 2: autoint2.e
 Quant Time: Nov 21 21:46:38 2022
 Quant Method : Z:\pestpcbsrv\HPCHEM1\ECD_O\methods\PO102722.M
 Quant Title : GC EXTRACTABLES
 QLast Update : Fri Oct 28 05:05:44 2022
 Response via : Initial Calibration
 Integrator: ChemStation

Volume Inj. : 2 µl
 Signal #1 Phase : ZB-MR1 Signal #2 Phase: ZB-MR2
 Signal #1 Info : 30Mx0.32mmx 0.50µm Signal #2 Info : 30M x 0.32mm x 0.25µm

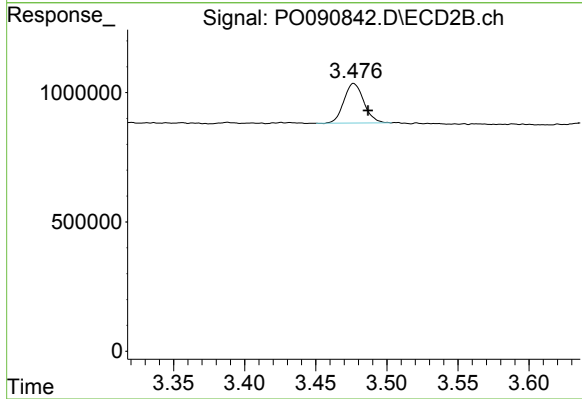




#1 Tetrachloro-m-xylene

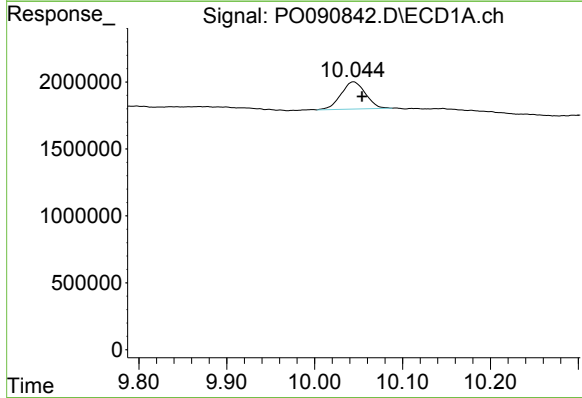
R.T.: 4.299 min
 Delta R.T.: -0.008 min
 Response: 4331524
 Conc: 1.35 ng/ml

Instrument :
 ECD_O
 ClientSampleId :
 BC136902-1-2



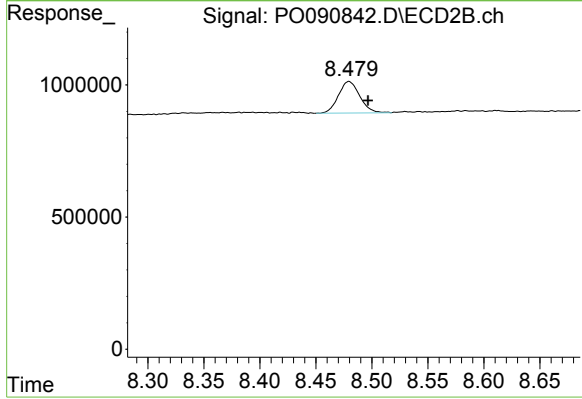
#1 Tetrachloro-m-xylene

R.T.: 3.477 min
 Delta R.T.: -0.010 min
 Response: 1493185
 Conc: 1.40 ng/ml



#2 Decachlorobiphenyl

R.T.: 10.044 min
 Delta R.T.: -0.010 min
 Response: 3954944
 Conc: 1.61 ng/ml



#2 Decachlorobiphenyl

R.T.: 8.480 min
 Delta R.T.: -0.017 min
 Response: 1581080
 Conc: 1.54 ng/ml