

Data Path : Z:\pestpcbsrv\HPCHEM1\ECD_0\Data\PO112122\
 Data File : PO090863.D
 Signal(s) : Signal #1: ECD1A.ch Signal #2: ECD2B.ch
 Acq On : 22 Nov 2022 03:20
 Operator : YP/AJ
 Sample : I.BLK
 Misc :
 ALS Vial : 2 Sample Multiplier: 1

Instrument :
 ECD_0
 ClientSampleId :
 I.BLK

Integration File signal 1: autoint1.e
 Integration File signal 2: autoint2.e
 Quant Time: Nov 22 04:34:01 2022
 Quant Method : Z:\pestpcbsrv\HPCHEM1\ECD_0\methods\PO102722.M
 Quant Title : GC EXTRACTABLES
 QLast Update : Fri Oct 28 05:05:44 2022
 Response via : Initial Calibration
 Integrator: ChemStation

Volume Inj. : 2 µl
 Signal #1 Phase : ZB-MR1 Signal #2 Phase: ZB-MR2
 Signal #1 Info : 30Mx0.32mmx 0.50µ Signal #2 Info : 30M x 0.32mm x 0.25µm

Compound	RT#1	RT#2	Resp#1	Resp#2	ng/ml	ng/ml

System Monitoring Compounds						
1) SA Tetrachlo...	4.298	3.476	66854187	22510092	20.802	21.180
2) SA Decachlor...	10.044	8.478	52030660	21331543	21.232	20.712

Target Compounds

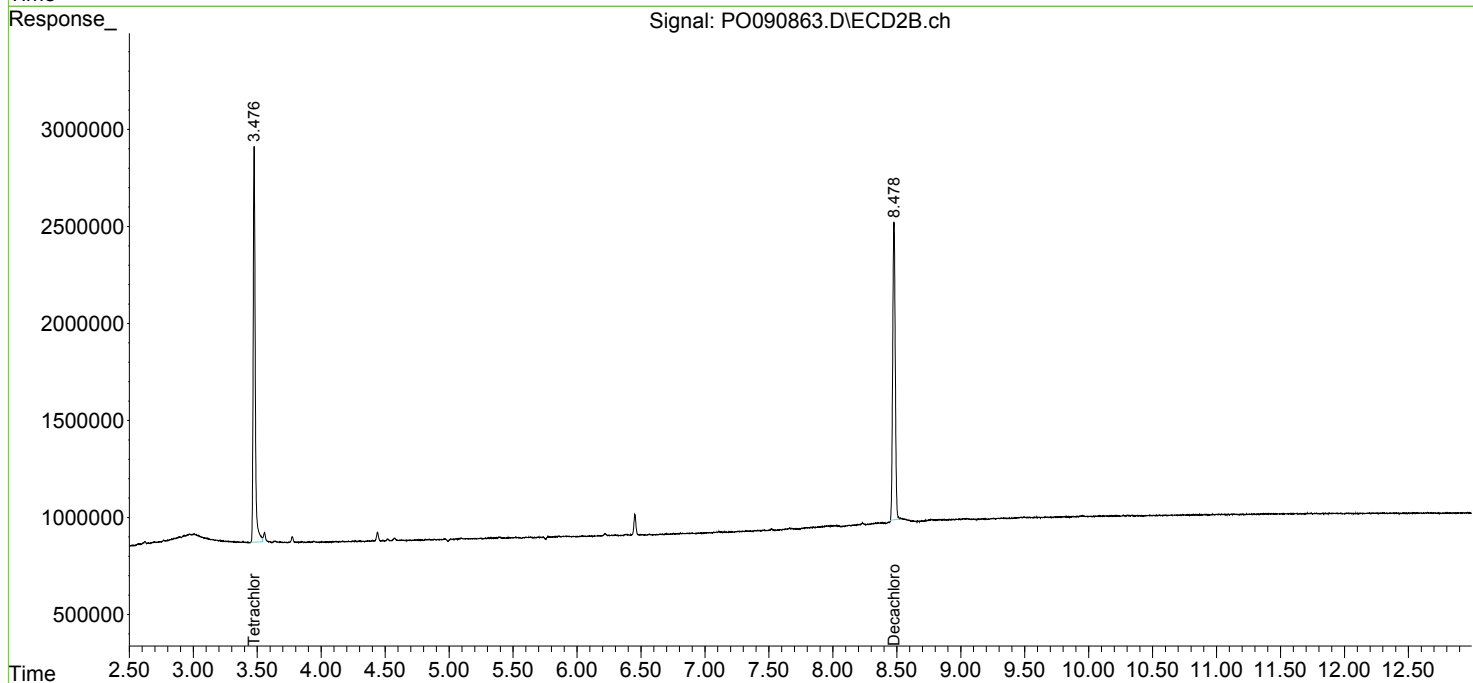
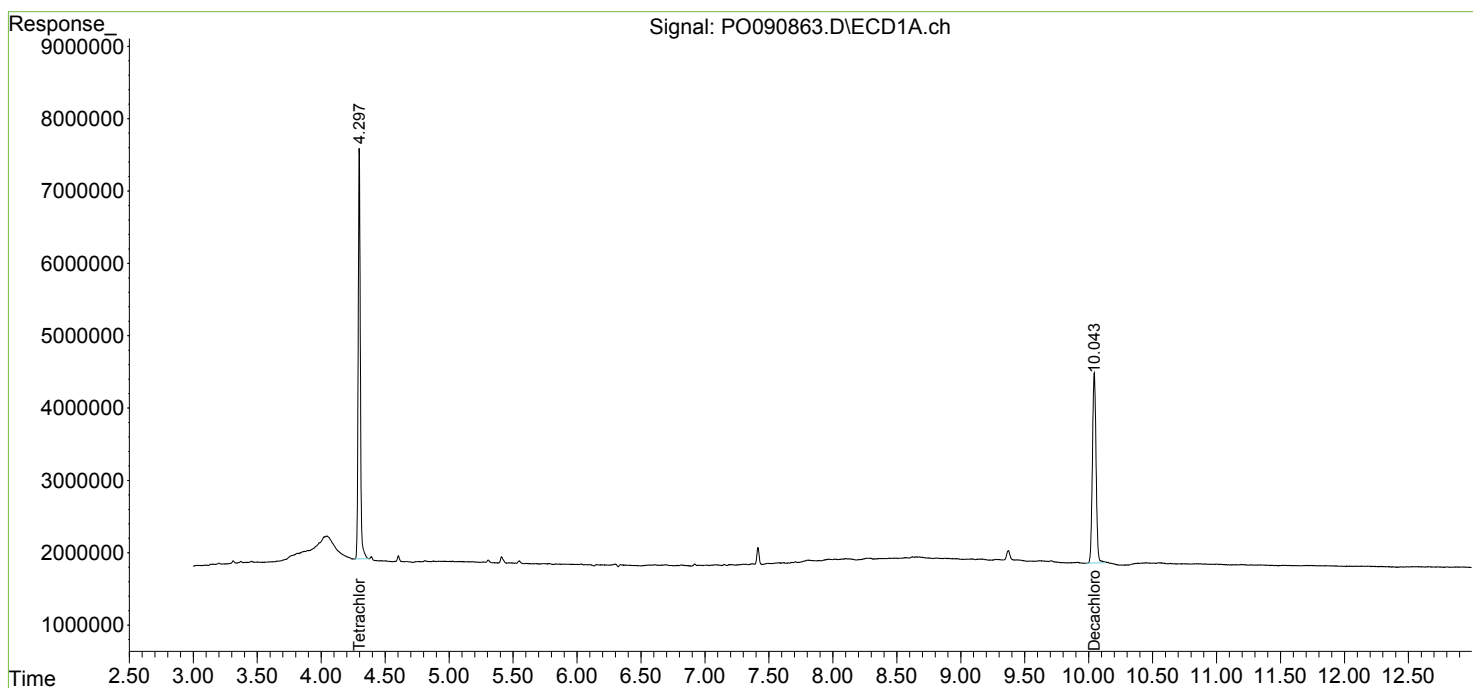
(f)=RT Delta > 1/2 Window (#)=Amounts differ by > 25% (m)=manual int.

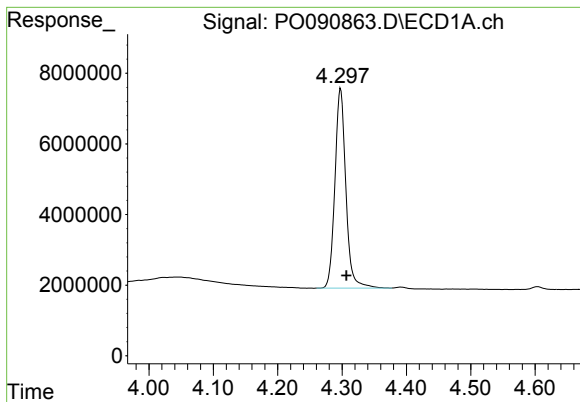
Data Path : Z:\pestpcbsrv\HPCHEM1\ECD_O\Data\PO112122\
 Data File : PO090863.D
 Signal(s) : Signal #1: ECD1A.ch Signal #2: ECD2B.ch
 Acq On : 22 Nov 2022 03:20
 Operator : YP/AJ
 Sample : I.BLK
 Misc :
 ALS Vial : 2 Sample Multiplier: 1

Instrument :
 ECD_O
 ClientSampleId :
 I.BLK

Integration File signal 1: autoint1.e
 Integration File signal 2: autoint2.e
 Quant Time: Nov 22 04:34:01 2022
 Quant Method : Z:\pestpcbsrv\HPCHEM1\ECD_O\methods\PO102722.M
 Quant Title : GC EXTRACTABLES
 QLast Update : Fri Oct 28 05:05:44 2022
 Response via : Initial Calibration
 Integrator: ChemStation

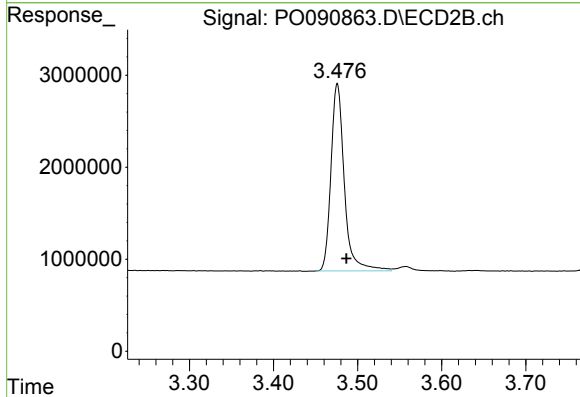
Volume Inj. : 2 µl
 Signal #1 Phase : ZB-MR1 Signal #2 Phase: ZB-MR2
 Signal #1 Info : 30Mx0.32mmx 0.50µ Signal #2 Info : 30M x 0.32mm x 0.25µm



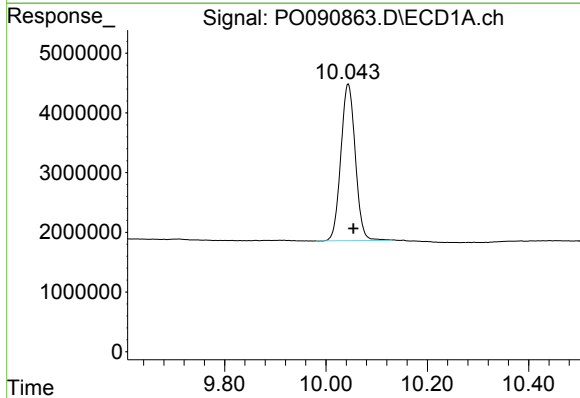


#1 Tetrachloro-m-xylene
 R.T.: 4.298 min
 Delta R.T.: -0.009 min
 Response: 66854187
 Conc: 20.80 ng/ml

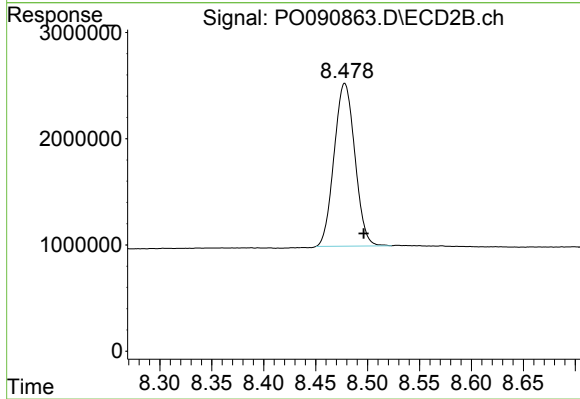
Instrument :
 ECD_O
 ClientSampleId :
 I.BLK



#1 Tetrachloro-m-xylene
 R.T.: 3.476 min
 Delta R.T.: -0.011 min
 Response: 22510092
 Conc: 21.18 ng/ml



#2 Decachlorobiphenyl
 R.T.: 10.044 min
 Delta R.T.: -0.010 min
 Response: 52030660
 Conc: 21.23 ng/ml



#2 Decachlorobiphenyl
 R.T.: 8.478 min
 Delta R.T.: -0.018 min
 Response: 21331543
 Conc: 20.71 ng/ml