

Data Path : Z:\pestpcbsrv\HPCHEM1\ECD_0\Data\PO112124\
 Data File : PO108165.D
 Signal(s) : Signal #1: ECD1A.ch Signal #2: ECD2B.ch
 Acq On : 21 Nov 2024 09:11
 Operator : YP/AJ
 Sample : HEXANE
 Misc :
 ALS Vial : 1 Sample Multiplier: 1

Instrument :
 ECD_0
 ClientSampleId :
 HEXANE

Integration File signal 1: autoint1.e
 Integration File signal 2: autoint2.e
 Quant Time: Nov 21 12:56:12 2024
 Quant Method : Z:\pestpcbsrv\HPCHEM1\ECD_0\methods\PO111824.M
 Quant Title : GC EXTRACTABLES
 QLast Update : Tue Nov 19 03:13:56 2024
 Response via : Initial Calibration
 Integrator: ChemStation

Volume Inj. : 2 µl
 Signal #1 Phase : ZB-MR1 Signal #2 Phase: ZB-MR2
 Signal #1 Info : 30Mx0.32mmx 0.50µ Signal #2 Info : 30M x 0.32mm x 0.25µm

Compound	RT#1	RT#2	Resp#1	Resp#2	ng/ml	ng/ml
System Monitoring Compounds						
1) SA Tetrachlo...	4.364	3.652	60801	131914	0.007	0.039 #
2) SA Decachlor...	10.095	8.638	168762	70029	0.055	0.021 #
Target Compounds						
3) L1 AR-1016-1	5.547	4.719	1449280	593552	5.389	5.432
4) L1 AR-1016-2	5.547	4.738	1449280	1094680	3.738	7.159 #
5) L1 AR-1016-3	5.618	4.916	1663306	7964967	6.656	96.940 #
6) L1 AR-1016-4	5.700	4.980	239667	6160247	1.227	96.749 #
7) L1 AR-1016-5	6.008	5.181	1109413	7627088	5.983	87.974 #
8) L2 AR-1221-1	4.569	3.861	294809	108472	2.719	3.058
9) L2 AR-1221-2	4.658	3.946	314062	191816	3.903	6.583 #
10) L2 AR-1221-3	4.727	4.015	-65856	109675	N.D.	1.232 #
11) L3 AR-1232-1	4.727	4.015	-65856	109675	N.D.	1.721 #
12) L3 AR-1232-2	5.258	4.738	513046	1094680	5.448	16.886 #
13) L3 AR-1232-3	5.547	4.916	1449280	7964967	8.959	239.761 #
14) L3 AR-1232-4	5.700	5.000	239667	1619388	3.137	53.461 #
15) L3 AR-1232-5	5.793	5.181	358919	7627088	6.788	243.082 #
16) L4 AR-1242-1	5.547	4.719	1449280	593552	6.547	6.707
17) L4 AR-1242-2	5.547	4.738	1449280	1094680	4.608	8.855 #
18) L4 AR-1242-3	5.618	4.916	1663306	7964967	8.215	120.165 #
19) L4 AR-1242-4	5.700	5.000	239667	1619388	1.535	25.878 #
20) L4 AR-1242-5	6.454	5.521	15061751	2498456	93.642	29.893 #
21) L5 AR-1248-1	5.547	4.719	1449280	593552	8.339	8.552
22) L5 AR-1248-2	5.793	4.980	358919	6160247	1.492	65.983 #
23) L5 AR-1248-3	6.008	5.000	1109413	1619388	4.325	16.404 #
24) L5 AR-1248-4	6.427	5.181	11751583	7627088	43.051	63.435 #
25) L5 AR-1248-5	6.454	5.551	15061751	7030353	55.580	56.410
26) L6 AR-1254-1	6.371	5.521	14472508	2498456	52.251	14.111 #
27) L6 AR-1254-2	6.607	5.674	6657566	16733214	16.338	107.505 #
28) L6 AR-1254-3	6.972	6.073	12447841	5277099	31.709	20.370 #
29) L6 AR-1254-4	7.282	6.280	13101438	2487294	46.936	17.175 #
30) L6 AR-1254-5	7.664	6.716	3408084	1199438	12.706	5.237 #
31) L7 AR-1260-1	7.119	6.196	5673104	7343294	20.671	45.346 #
32) L7 AR-1260-2	7.423	6.377	8147788	5668540	28.790	28.794
33) L7 AR-1260-3	7.763	6.556	1449346	742239	6.747	3.988 #
34) L7 AR-1260-4	7.990	7.009	560438	411705	2.524	2.573
35) L7 AR-1260-5	8.292	7.270	148636	1398116	0.390	3.560 #
36) L8 AR-1262-1	7.763	6.758	1449346	809730	4.483	3.559
37) L8 AR-1262-2	8.292	7.270	148636	1398116	0.330	3.275 #
38) L8 AR-1262-3	8.604	7.545	49351	1599364	0.171	9.687 #
39) L8 AR-1262-4	8.682	7.626	127532	1054597	0.572	3.317 #
40) L8 AR-1262-5	9.319	8.100	2827646	1125943	18.600	7.607 #
41) L9 AR-1268-1	8.604	7.545	49351	1599364	0.100	3.234 #

Data Path : Z:\pestpcbsrv\HPCHEM1\ECD_0\Data\PO112124\
 Data File : PO108165.D
 Signal(s) : Signal #1: ECD1A.ch Signal #2: ECD2B.ch
 Acq On : 21 Nov 2024 09:11
 Operator : YP/AJ
 Sample : HEXANE
 Misc :
 ALS Vial : 1 Sample Multiplier: 1

Instrument :
 ECD_0
 ClientSampleId :
 HEXANE

Integration File signal 1: autoint1.e
 Integration File signal 2: autoint2.e
 Quant Time: Nov 21 12:56:12 2024
 Quant Method : Z:\pestpcbsrv\HPCHEM1\ECD_0\methods\PO111824.M
 Quant Title : GC EXTRACTABLES
 QLast Update : Tue Nov 19 03:13:56 2024
 Response via : Initial Calibration
 Integrator: ChemStation

Volume Inj. : 2 µl
 Signal #1 Phase : ZB-MR1 Signal #2 Phase: ZB-MR2
 Signal #1 Info : 30Mx0.32mmx 0.50µ Signal #2 Info : 30M x 0.32mm x 0.25µm

	Compound	RT#1	RT#2	Resp#1	Resp#2	ng/ml	ng/ml
42)	L9 AR-1268-2	8.682	7.626	127532	1054597	0.287	2.287 #
43)	L9 AR-1268-3	8.930	7.814	63955	994173	0.175	2.581 #
44)	L9 AR-1268-4	9.319	8.100	2827646	1125943	16.852	6.815 #
45)	L9 AR-1268-5	9.734	8.387	2670740	1915620	2.429	1.476 #

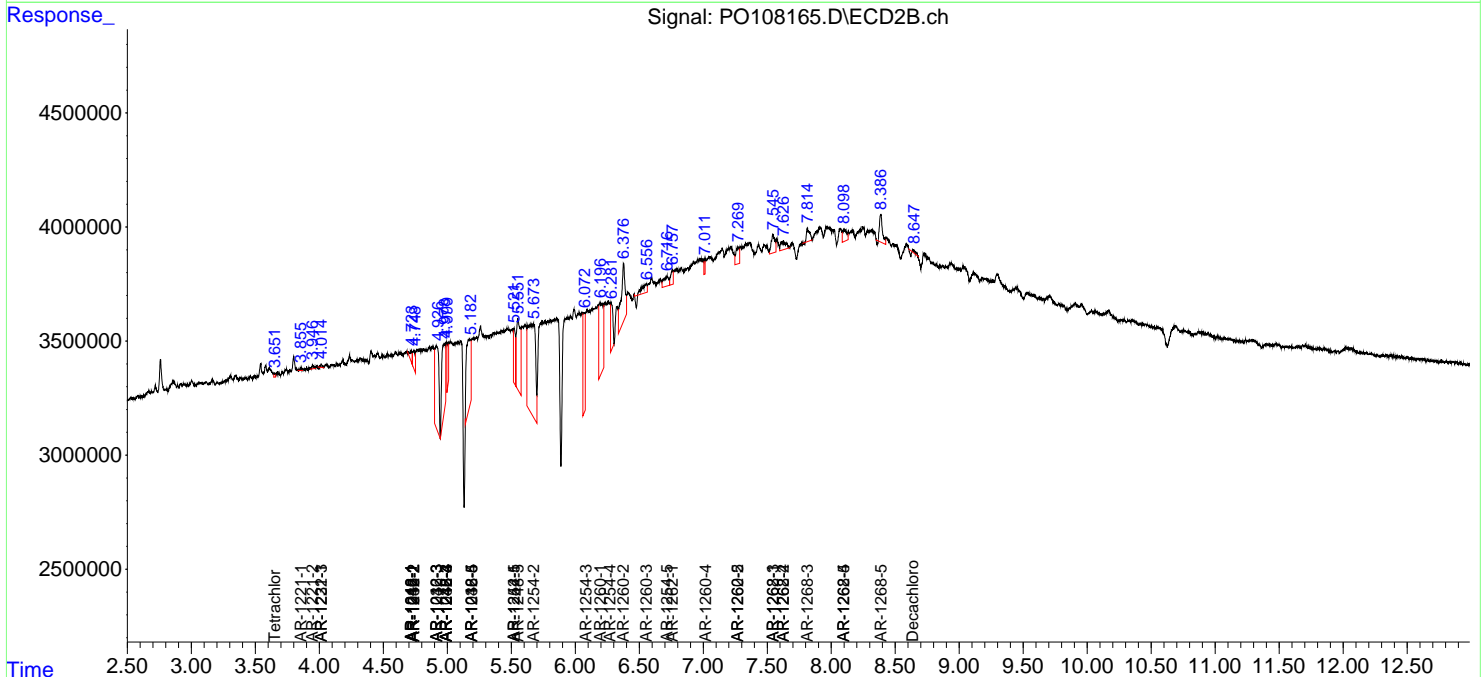
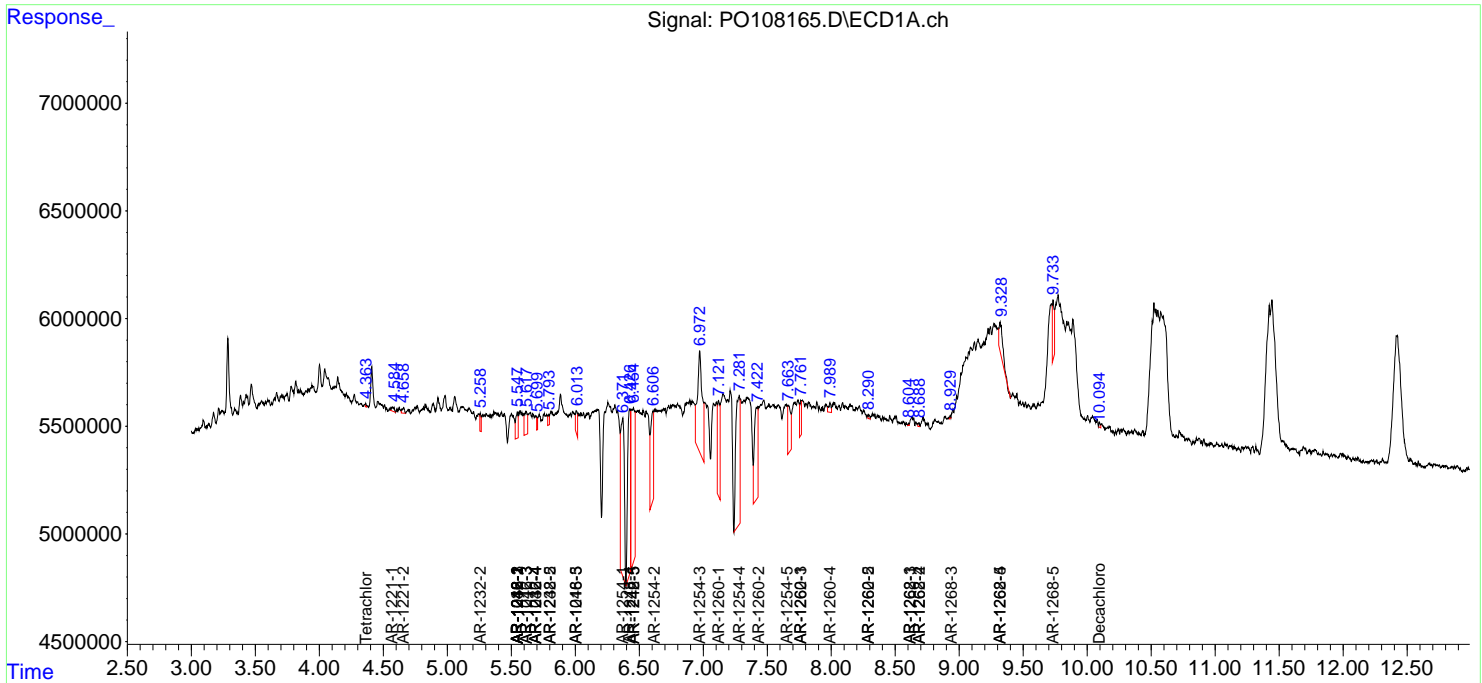
(f)=RT Delta > 1/2 Window (#)=Amounts differ by > 25% (m)=manual int.

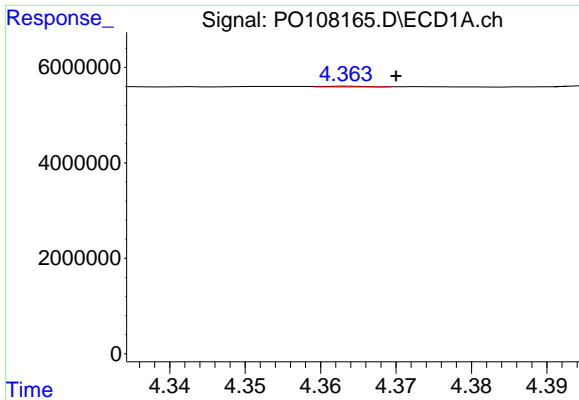
Data Path : Z:\pestpcbsrv\HPCHEM1\ECD_O\Data\PO112124\
 Data File : PO108165.D
 Signal(s) : Signal #1: ECD1A.ch Signal #2: ECD2B.ch
 Acq On : 21 Nov 2024 09:11
 Operator : YP/AJ
 Sample : HEXANE
 Misc :
 ALS Vial : 1 Sample Multiplier: 1

Instrument :
 ECD_O
ClientSampleId :
 HEXANE

Integration File signal 1: autoint1.e
 Integration File signal 2: autoint2.e
 Quant Time: Nov 21 12:56:12 2024
 Quant Method : Z:\pestpcbsrv\HPCHEM1\ECD_O\methods\PO111824.M
 Quant Title : GC EXTRACTABLES
 QLast Update : Tue Nov 19 03:13:56 2024
 Response via : Initial Calibration
 Integrator: ChemStation

Volume Inj. : 2 µl
 Signal #1 Phase : ZB-MR1 Signal #2 Phase: ZB-MR2
 Signal #1 Info : 30Mx0.32mmx 0.50µ Signal #2 Info : 30M x 0.32mm x 0.25µm

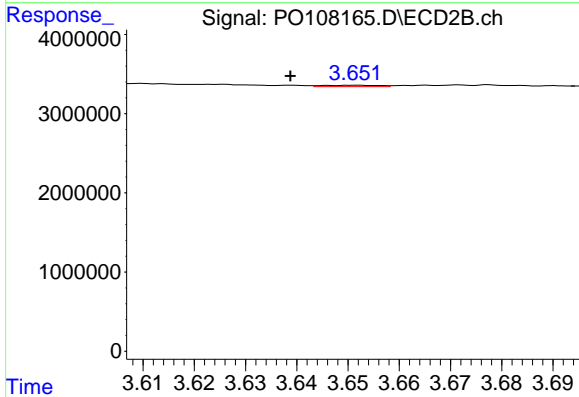




#1 Tetrachloro-m-xylene

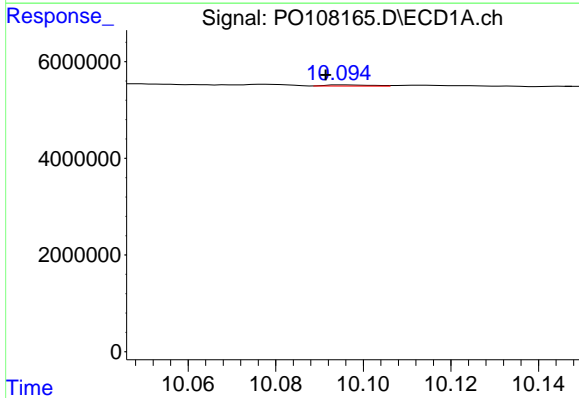
R.T.: 4.364 min
 Delta R.T.: -0.006 min
 Response: 60801
 Conc: 0.01 ng/ml

Instrument :
 ECD_O
 ClientSampleId :
 HEXANE



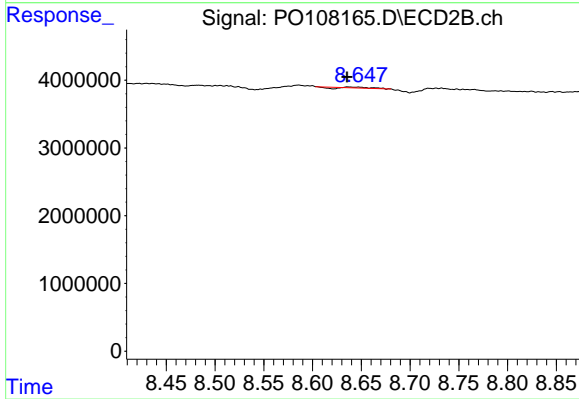
#1 Tetrachloro-m-xylene

R.T.: 3.652 min
 Delta R.T.: 0.013 min
 Response: 131914
 Conc: 0.04 ng/ml



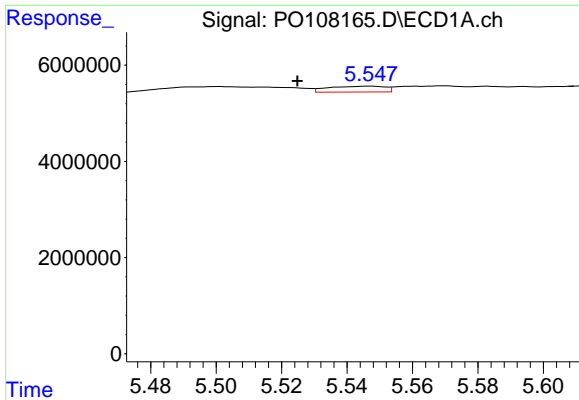
#2 Decachlorobiphenyl

R.T.: 10.095 min
 Delta R.T.: 0.004 min
 Response: 168762
 Conc: 0.06 ng/ml



#2 Decachlorobiphenyl

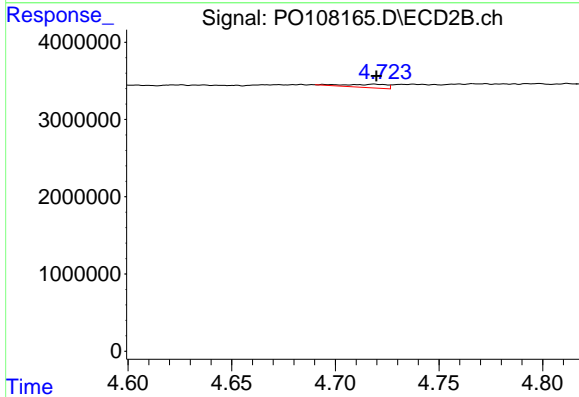
R.T.: 8.638 min
 Delta R.T.: 0.002 min
 Response: 70029
 Conc: 0.02 ng/ml



#3 AR-1016-1

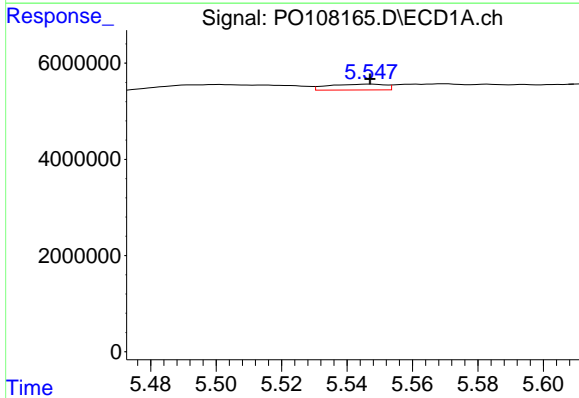
R.T.: 5.547 min
 Delta R.T.: 0.022 min
 Response: 1449280
 Conc: 5.39 ng/ml

Instrument :
 ECD_O
 ClientSampleId :
 HEXANE



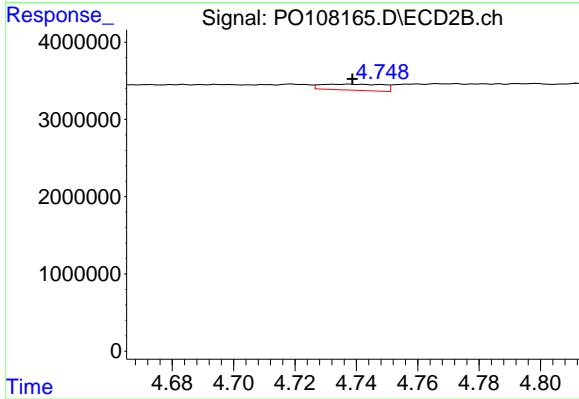
#3 AR-1016-1

R.T.: 4.719 min
 Delta R.T.: -0.001 min
 Response: 593552
 Conc: 5.43 ng/ml



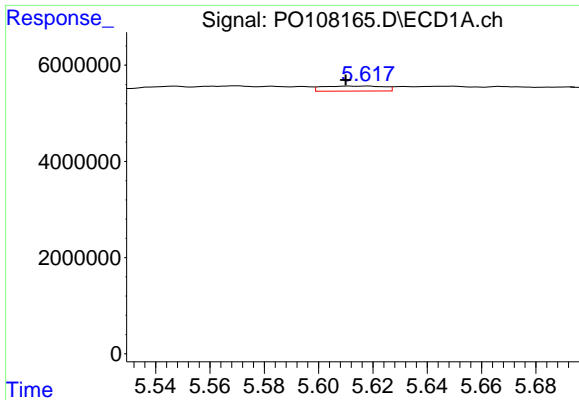
#4 AR-1016-2

R.T.: 5.547 min
 Delta R.T.: 0.000 min
 Response: 1449280
 Conc: 3.74 ng/ml



#4 AR-1016-2

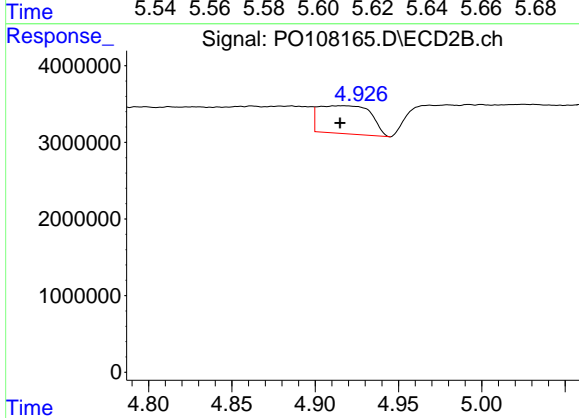
R.T.: 4.738 min
 Delta R.T.: 0.000 min
 Response: 1094680
 Conc: 7.16 ng/ml



#5 AR-1016-3

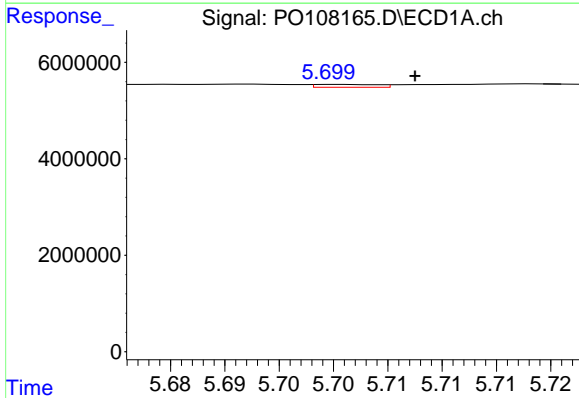
R.T.: 5.618 min
 Delta R.T.: 0.008 min
 Response: 1663306
 Conc: 6.66 ng/ml

Instrument :
 ECD_O
 ClientSampleId :
 HEXANE



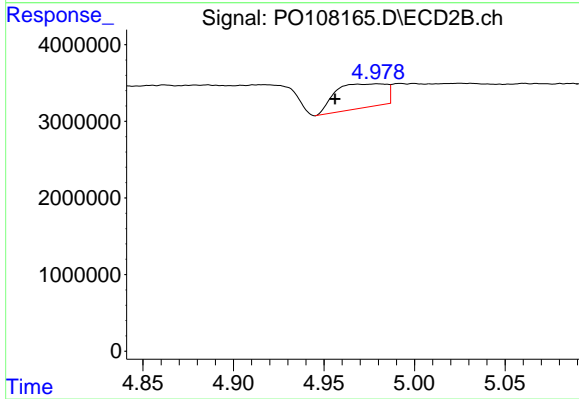
#5 AR-1016-3

R.T.: 4.916 min
 Delta R.T.: 0.002 min
 Response: 7964967
 Conc: 96.94 ng/ml



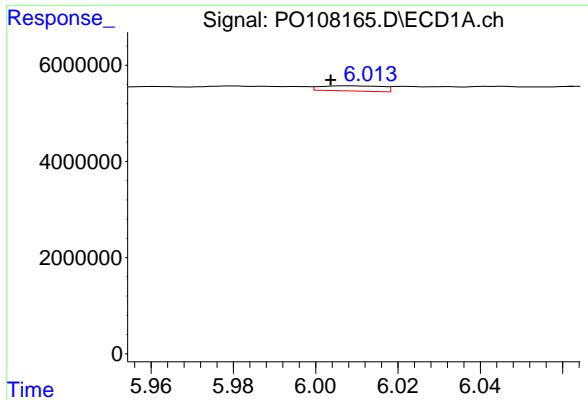
#6 AR-1016-4

R.T.: 5.700 min
 Delta R.T.: -0.007 min
 Response: 239667
 Conc: 1.23 ng/ml



#6 AR-1016-4

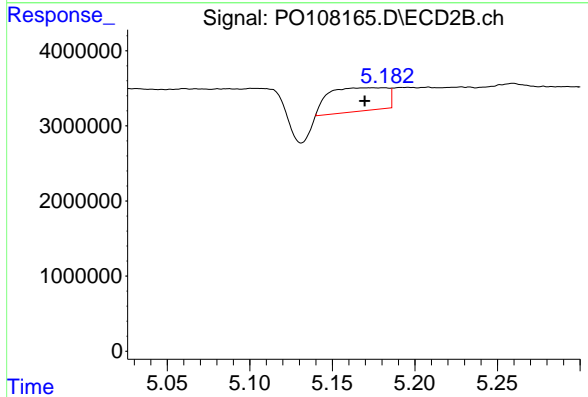
R.T.: 4.980 min
 Delta R.T.: 0.024 min
 Response: 6160247
 Conc: 96.75 ng/ml



#7 AR-1016-5

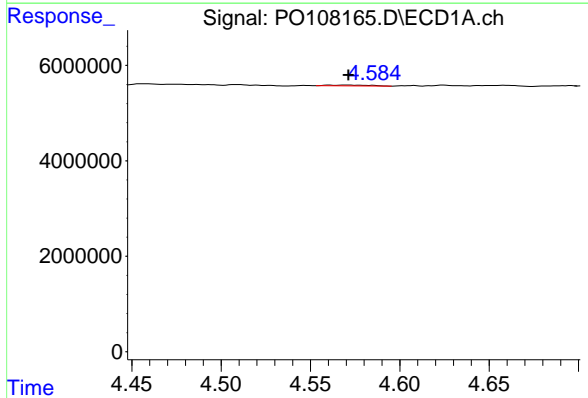
R.T.: 6.008 min
 Delta R.T.: 0.004 min
 Response: 1109413
 Conc: 5.98 ng/ml

Instrument :
 ECD_O
 ClientSampleId :
 HEXANE



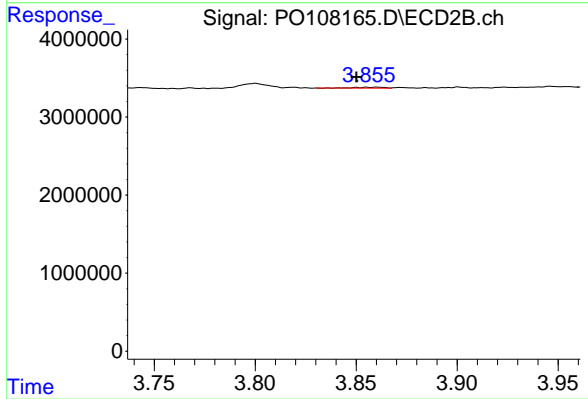
#7 AR-1016-5

R.T.: 5.181 min
 Delta R.T.: 0.012 min
 Response: 7627088
 Conc: 87.97 ng/ml



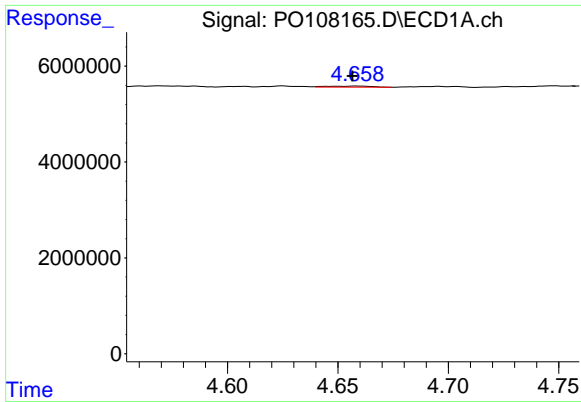
#8 AR-1221-1

R.T.: 4.569 min
 Delta R.T.: -0.002 min
 Response: 294809
 Conc: 2.72 ng/ml



#8 AR-1221-1

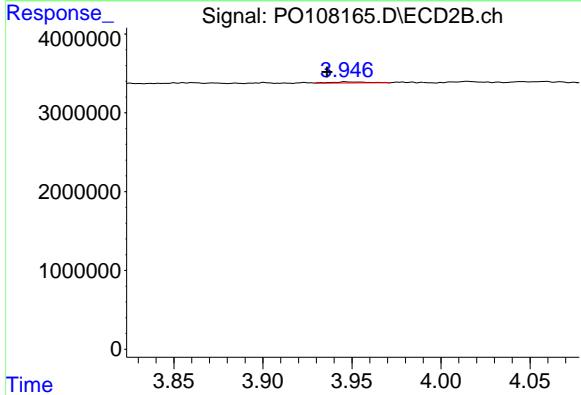
R.T.: 3.861 min
 Delta R.T.: 0.010 min
 Response: 108472
 Conc: 3.06 ng/ml



#9 AR-1221-2

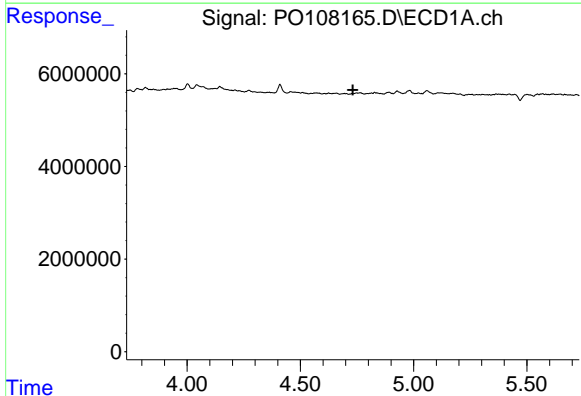
R.T.: 4.658 min
 Delta R.T.: 0.002 min
 Response: 314062
 Conc: 3.90 ng/ml

Instrument :
 ECD_O
 ClientSampleId :
 HEXANE



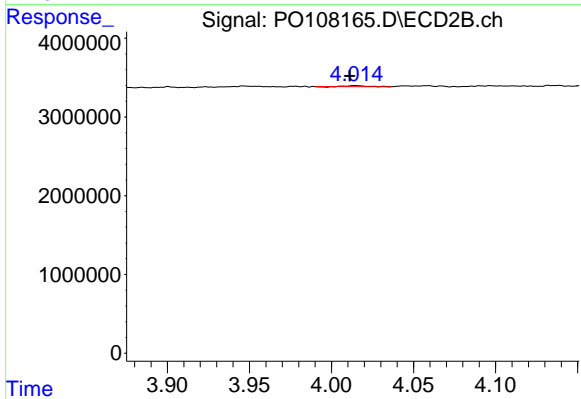
#9 AR-1221-2

R.T.: 3.946 min
 Delta R.T.: 0.010 min
 Response: 191816
 Conc: 6.58 ng/ml



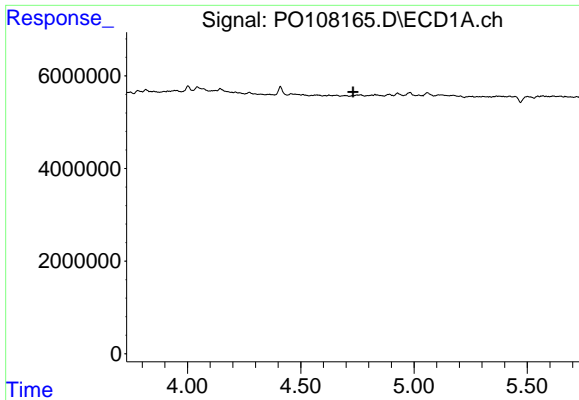
#10 AR-1221-3

R.T.: 4.727 min
 Delta R.T.: -0.004 min
 Response: -65856
 Conc: N.D.



#10 AR-1221-3

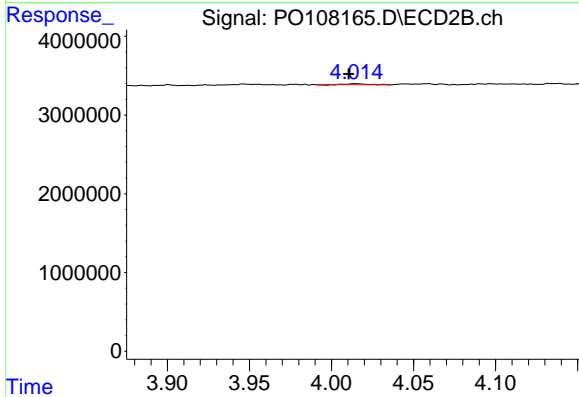
R.T.: 4.015 min
 Delta R.T.: 0.003 min
 Response: 109675
 Conc: 1.23 ng/ml



#11 AR-1232-1

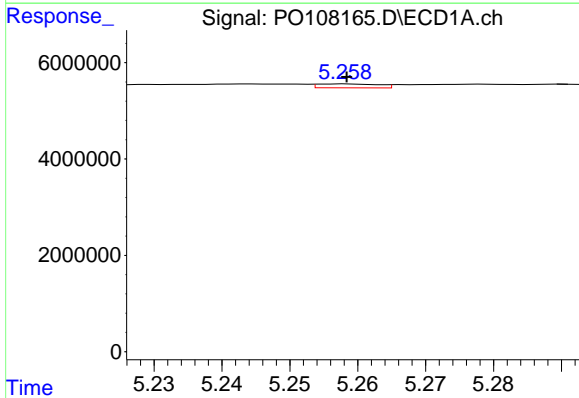
R.T.: 4.727 min
 Delta R.T.: -0.004 min
 Response: -65856
 Conc: N.D.

Instrument :
 ECD_O
 ClientSampleId :
 HEXANE



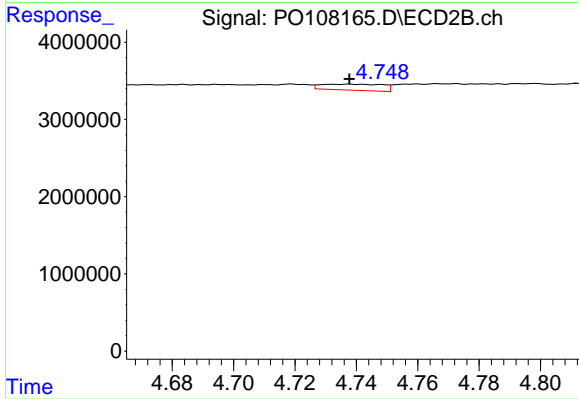
#11 AR-1232-1

R.T.: 4.015 min
 Delta R.T.: 0.004 min
 Response: 109675
 Conc: 1.72 ng/ml



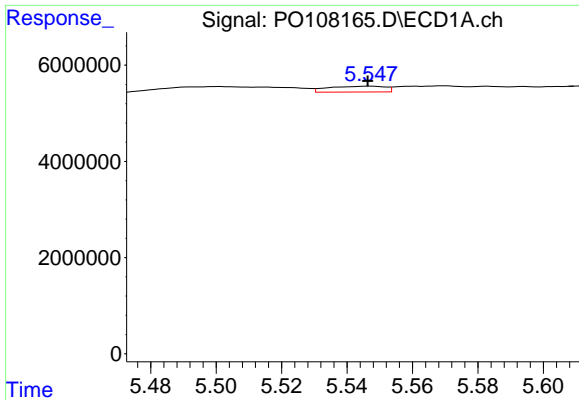
#12 AR-1232-2

R.T.: 5.258 min
 Delta R.T.: 0.000 min
 Response: 513046
 Conc: 5.45 ng/ml



#12 AR-1232-2

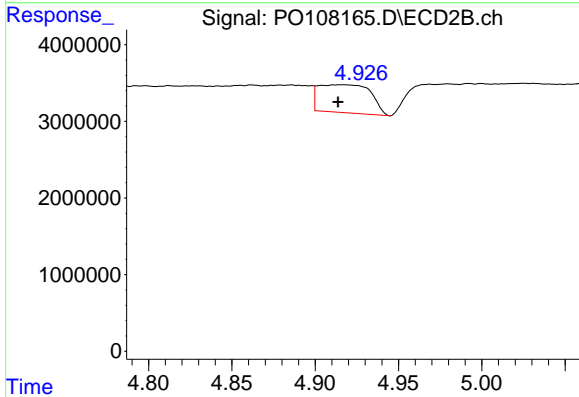
R.T.: 4.738 min
 Delta R.T.: 0.000 min
 Response: 1094680
 Conc: 16.89 ng/ml



#13 AR-1232-3

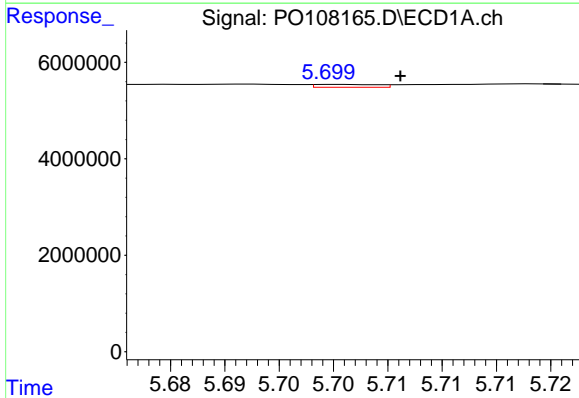
R.T.: 5.547 min
 Delta R.T.: 0.000 min
 Response: 1449280
 Conc: 8.96 ng/ml

Instrument :
 ECD_O
 ClientSampleId :
 HEXANE



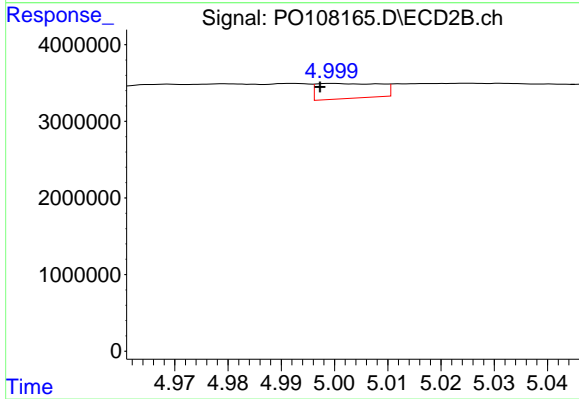
#13 AR-1232-3

R.T.: 4.916 min
 Delta R.T.: 0.003 min
 Response: 7964967
 Conc: 239.76 ng/ml



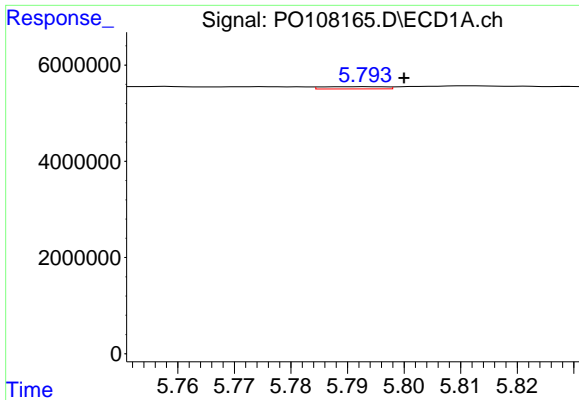
#14 AR-1232-4

R.T.: 5.700 min
 Delta R.T.: -0.006 min
 Response: 239667
 Conc: 3.14 ng/ml



#14 AR-1232-4

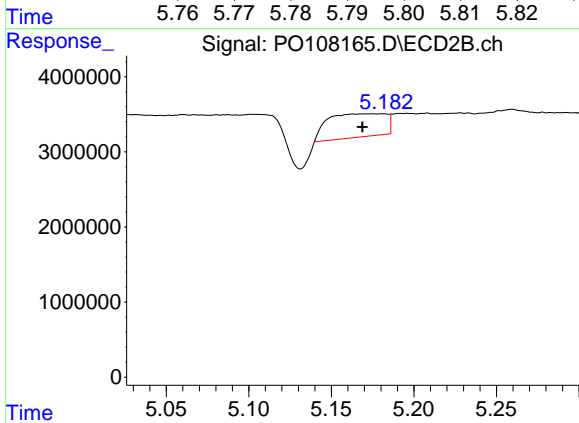
R.T.: 5.000 min
 Delta R.T.: 0.003 min
 Response: 1619388
 Conc: 53.46 ng/ml



#15 AR-1232-5

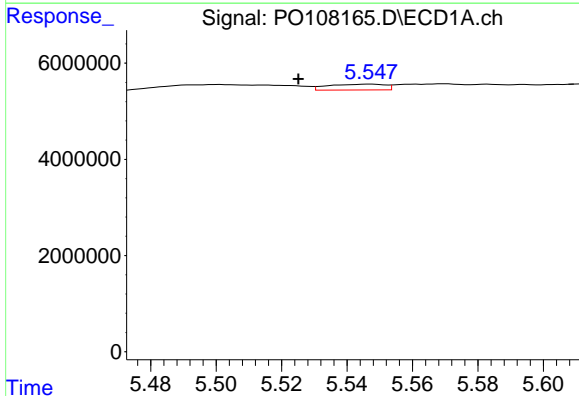
R.T.: 5.793 min
 Delta R.T.: -0.007 min
 Response: 358919
 Conc: 6.79 ng/ml

Instrument :
 ECD_O
 ClientSampleId :
 HEXANE



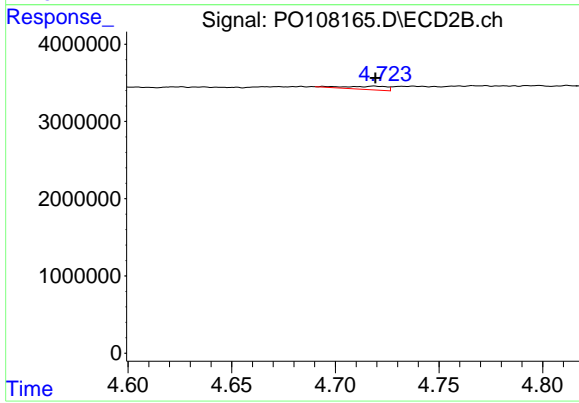
#15 AR-1232-5

R.T.: 5.181 min
 Delta R.T.: 0.012 min
 Response: 7627088
 Conc: 243.08 ng/ml



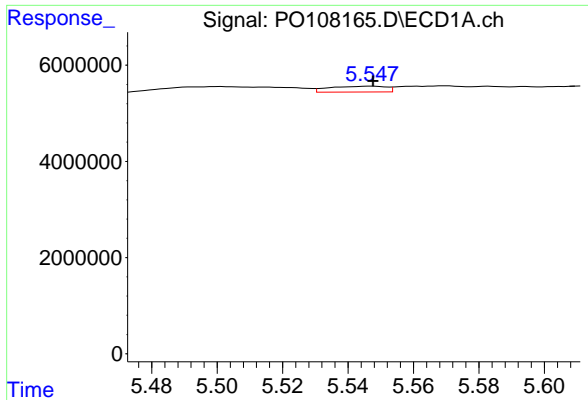
#16 AR-1242-1

R.T.: 5.547 min
 Delta R.T.: 0.022 min
 Response: 1449280
 Conc: 6.55 ng/ml



#16 AR-1242-1

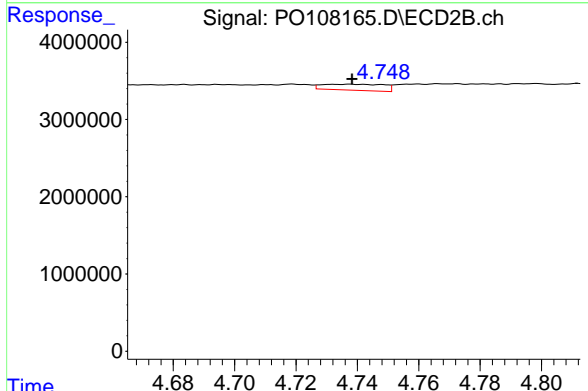
R.T.: 4.719 min
 Delta R.T.: 0.000 min
 Response: 593552
 Conc: 6.71 ng/ml



#17 AR-1242-2

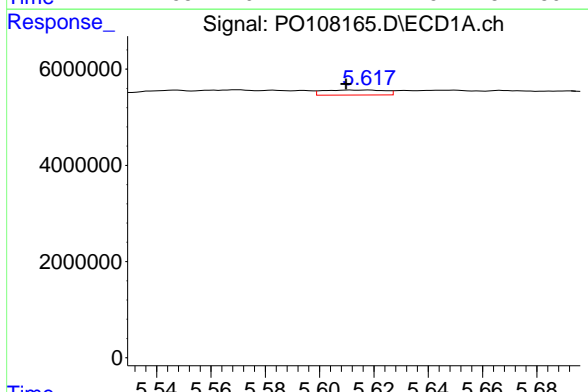
R.T.: 5.547 min
 Delta R.T.: 0.000 min
 Response: 1449280
 Conc: 4.61 ng/ml

Instrument :
 ECD_O
 ClientSampleId :
 HEXANE



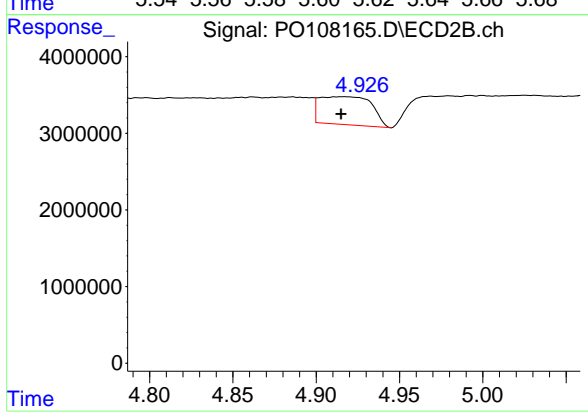
#17 AR-1242-2

R.T.: 4.738 min
 Delta R.T.: 0.000 min
 Response: 1094680
 Conc: 8.86 ng/ml



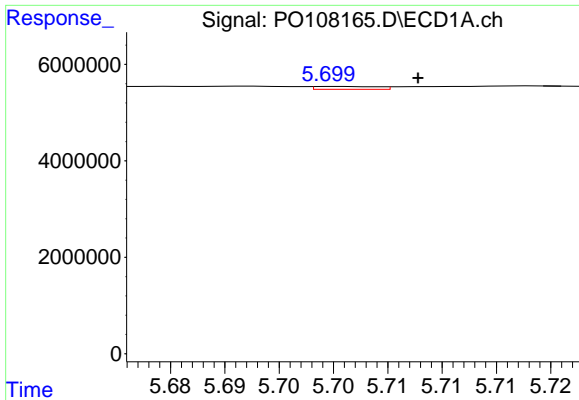
#18 AR-1242-3

R.T.: 5.618 min
 Delta R.T.: 0.008 min
 Response: 1663306
 Conc: 8.22 ng/ml



#18 AR-1242-3

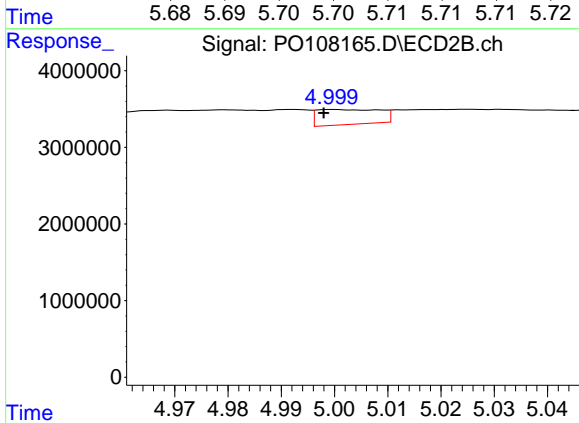
R.T.: 4.916 min
 Delta R.T.: 0.002 min
 Response: 7964967
 Conc: 120.16 ng/ml



#19 AR-1242-4

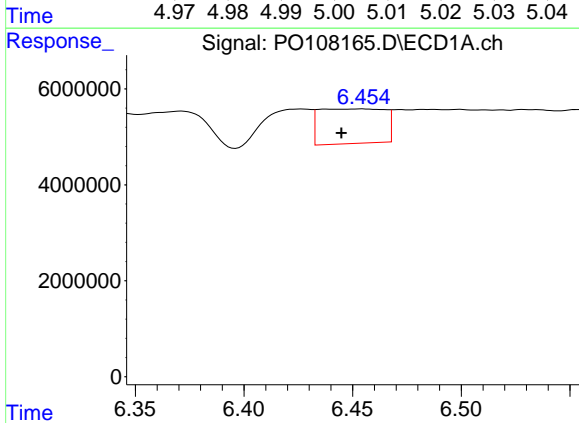
R.T.: 5.700 min
 Delta R.T.: -0.008 min
 Response: 239667
 Conc: 1.54 ng/ml

Instrument :
 ECD_O
 ClientSampleId :
 HEXANE



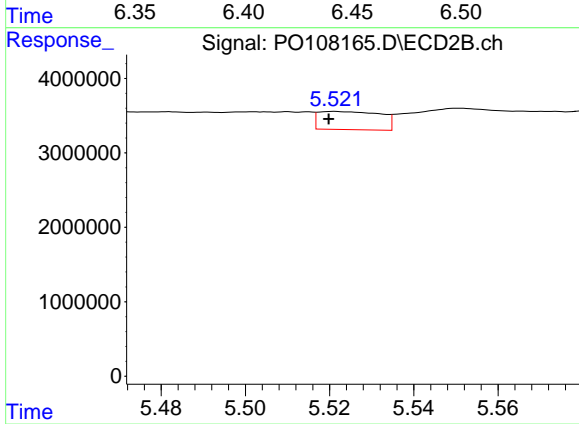
#19 AR-1242-4

R.T.: 5.000 min
 Delta R.T.: 0.002 min
 Response: 1619388
 Conc: 25.88 ng/ml



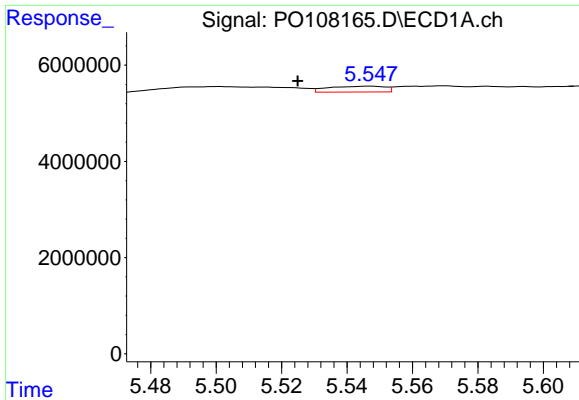
#20 AR-1242-5

R.T.: 6.454 min
 Delta R.T.: 0.010 min
 Response: 15061751
 Conc: 93.64 ng/ml



#20 AR-1242-5

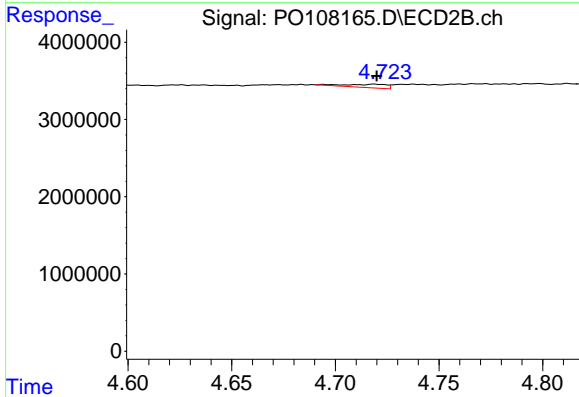
R.T.: 5.521 min
 Delta R.T.: 0.001 min
 Response: 2498456
 Conc: 29.89 ng/ml



#21 AR-1248-1

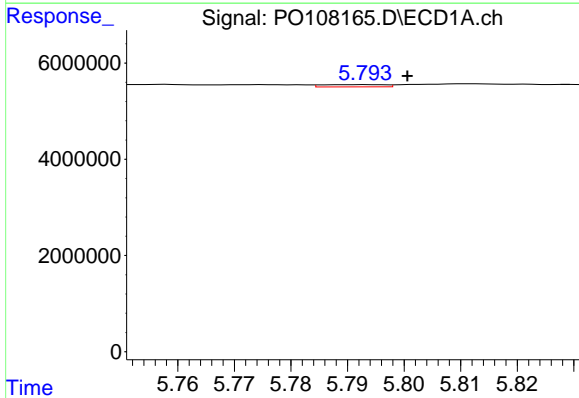
R.T.: 5.547 min
 Delta R.T.: 0.022 min
 Response: 1449280
 Conc: 8.34 ng/ml

Instrument :
 ECD_O
 ClientSampleId :
 HEXANE



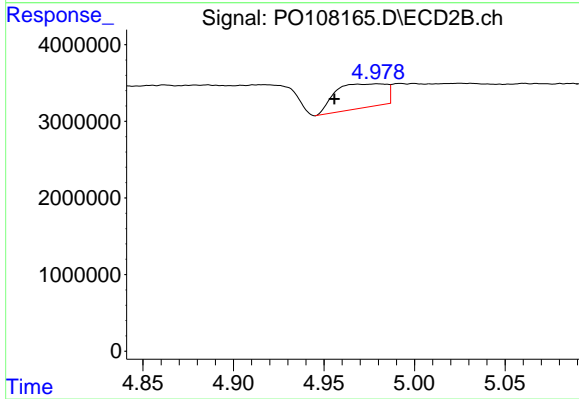
#21 AR-1248-1

R.T.: 4.719 min
 Delta R.T.: -0.001 min
 Response: 593552
 Conc: 8.55 ng/ml



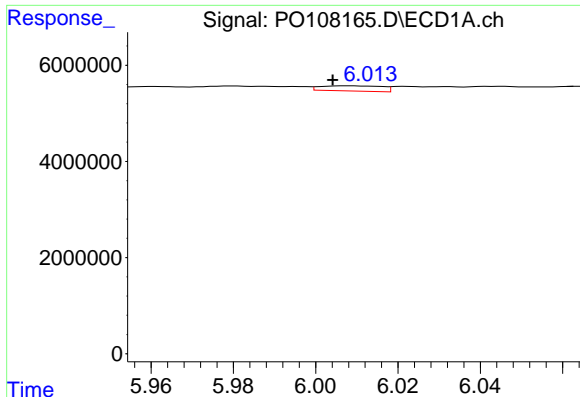
#22 AR-1248-2

R.T.: 5.793 min
 Delta R.T.: -0.007 min
 Response: 358919
 Conc: 1.49 ng/ml



#22 AR-1248-2

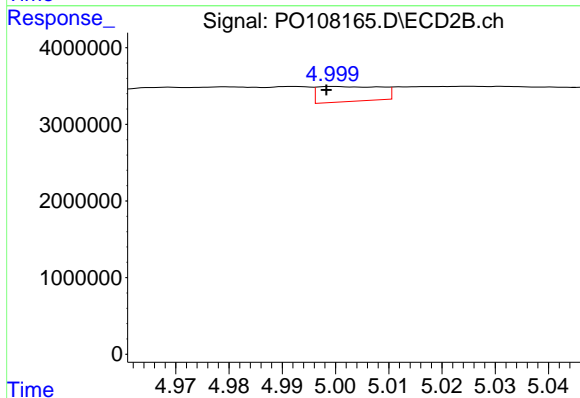
R.T.: 4.980 min
 Delta R.T.: 0.024 min
 Response: 6160247
 Conc: 65.98 ng/ml



#23 AR-1248-3

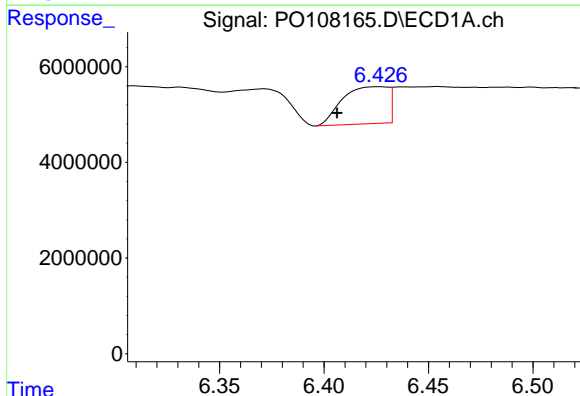
R.T.: 6.008 min
 Delta R.T.: 0.004 min
 Response: 1109413
 Conc: 4.33 ng/ml

Instrument :
 ECD_O
 ClientSampleId :
 HEXANE



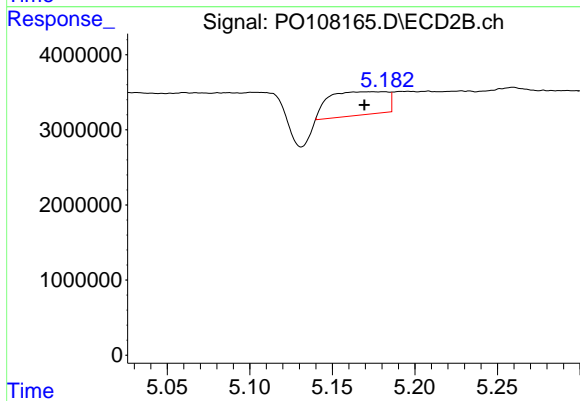
#23 AR-1248-3

R.T.: 5.000 min
 Delta R.T.: 0.002 min
 Response: 1619388
 Conc: 16.40 ng/ml



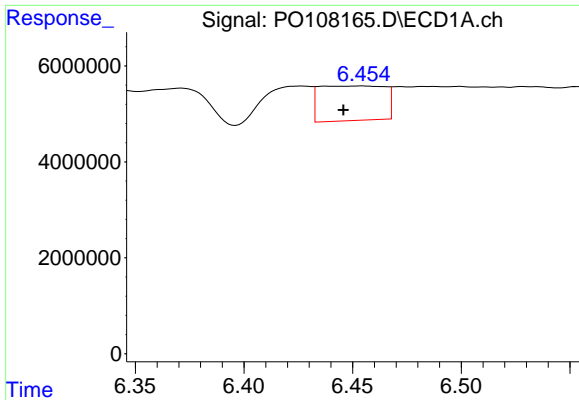
#24 AR-1248-4

R.T.: 6.427 min
 Delta R.T.: 0.020 min
 Response: 11751583
 Conc: 43.05 ng/ml



#24 AR-1248-4

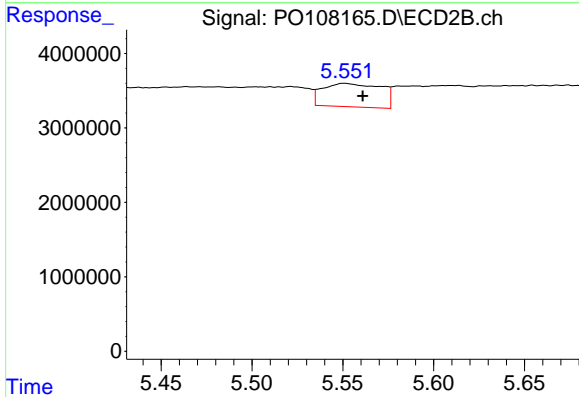
R.T.: 5.181 min
 Delta R.T.: 0.012 min
 Response: 7627088
 Conc: 63.43 ng/ml



#25 AR-1248-5

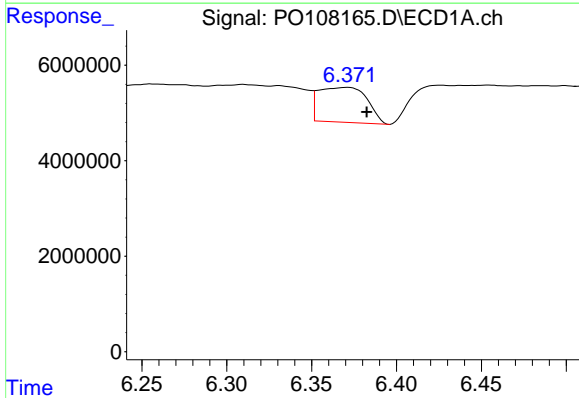
R.T.: 6.454 min
 Delta R.T.: 0.009 min
 Response: 15061751
 Conc: 55.58 ng/ml

Instrument :
 ECD_O
 ClientSampleId :
 HEXANE



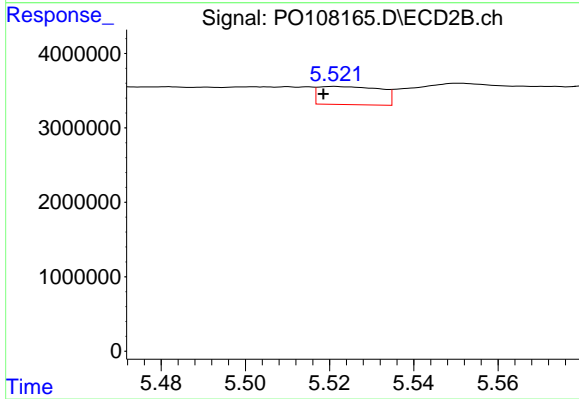
#25 AR-1248-5

R.T.: 5.551 min
 Delta R.T.: -0.010 min
 Response: 7030353
 Conc: 56.41 ng/ml



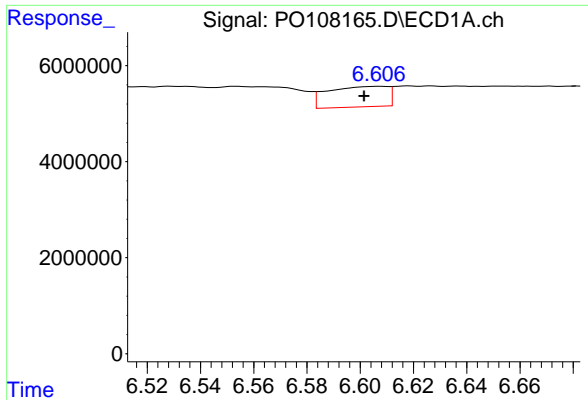
#26 AR-1254-1

R.T.: 6.371 min
 Delta R.T.: -0.011 min
 Response: 14472508
 Conc: 52.25 ng/ml



#26 AR-1254-1

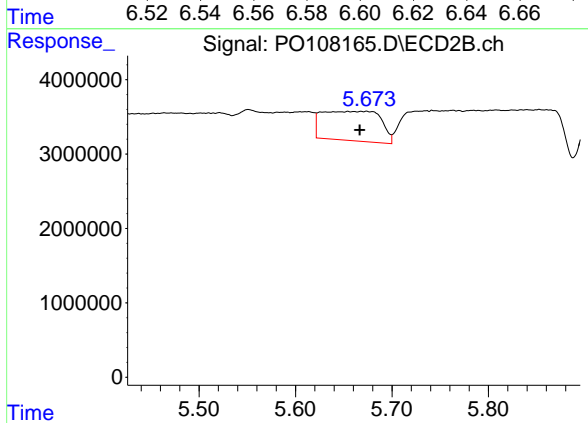
R.T.: 5.521 min
 Delta R.T.: 0.003 min
 Response: 2498456
 Conc: 14.11 ng/ml



#27 AR-1254-2

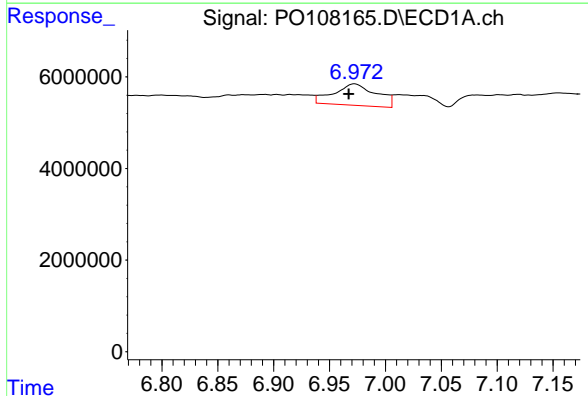
R.T.: 6.607 min
 Delta R.T.: 0.006 min
 Response: 6657566
 Conc: 16.34 ng/ml

Instrument :
 ECD_O
 ClientSampleId :
 HEXANE



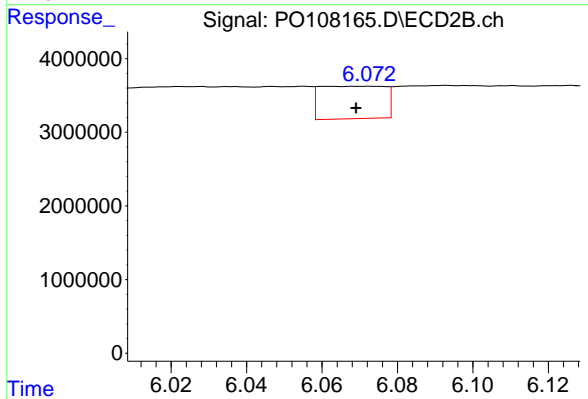
#27 AR-1254-2

R.T.: 5.674 min
 Delta R.T.: 0.007 min
 Response: 16733214
 Conc: 107.50 ng/ml



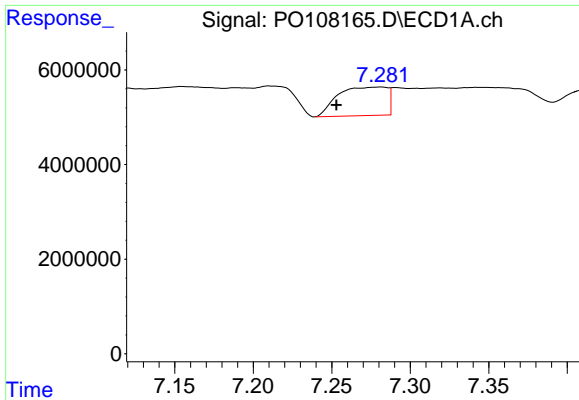
#28 AR-1254-3

R.T.: 6.972 min
 Delta R.T.: 0.005 min
 Response: 12447841
 Conc: 31.71 ng/ml



#28 AR-1254-3

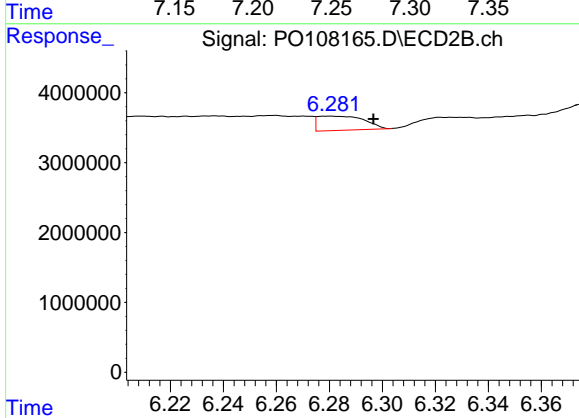
R.T.: 6.073 min
 Delta R.T.: 0.004 min
 Response: 5277099
 Conc: 20.37 ng/ml



#29 AR-1254-4

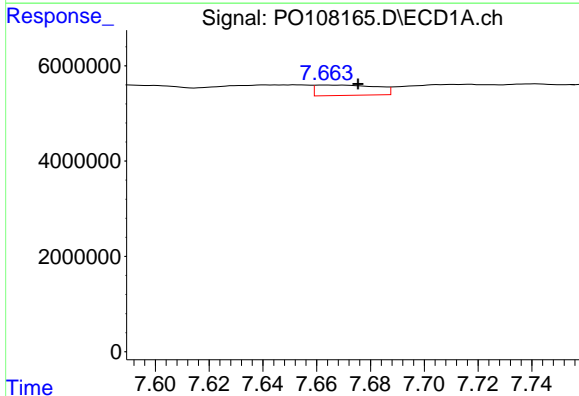
R.T.: 7.282 min
 Delta R.T.: 0.029 min
 Response: 13101438
 Conc: 46.94 ng/ml

Instrument :
 ECD_O
 ClientSampleId :
 HEXANE



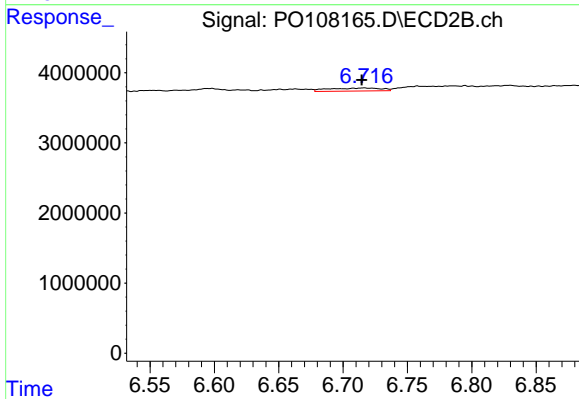
#29 AR-1254-4

R.T.: 6.280 min
 Delta R.T.: -0.017 min
 Response: 2487294
 Conc: 17.17 ng/ml



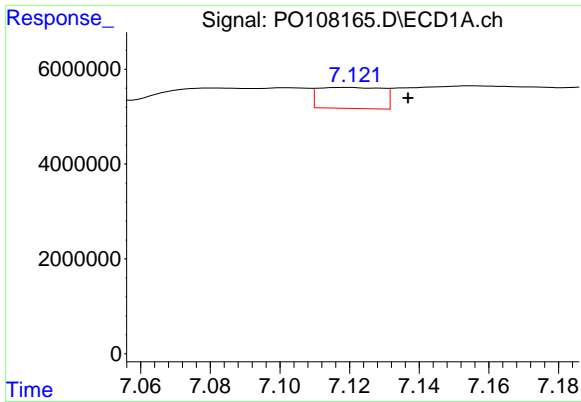
#30 AR-1254-5

R.T.: 7.664 min
 Delta R.T.: -0.012 min
 Response: 3408084
 Conc: 12.71 ng/ml



#30 AR-1254-5

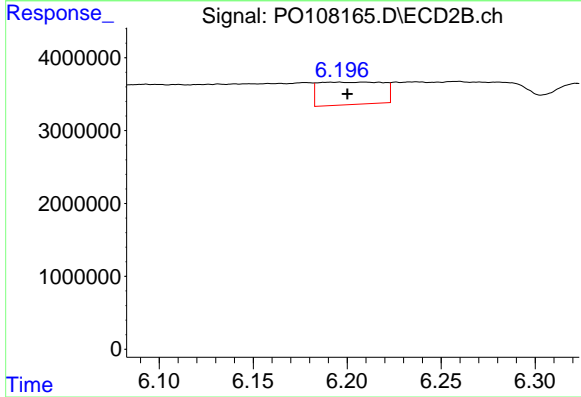
R.T.: 6.716 min
 Delta R.T.: 0.002 min
 Response: 1199438
 Conc: 5.24 ng/ml



#31 AR-1260-1

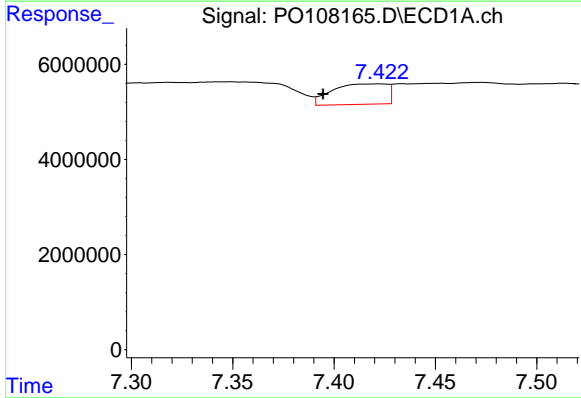
R.T.: 7.119 min
 Delta R.T.: -0.017 min
 Response: 5673104
 Conc: 20.67 ng/ml

Instrument :
 ECD_O
 ClientSampleId :
 HEXANE



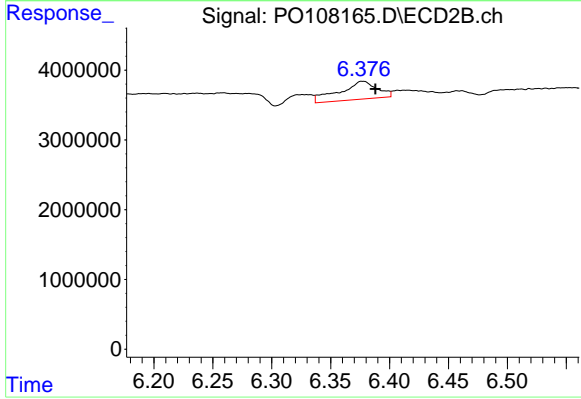
#31 AR-1260-1

R.T.: 6.196 min
 Delta R.T.: -0.004 min
 Response: 7343294
 Conc: 45.35 ng/ml



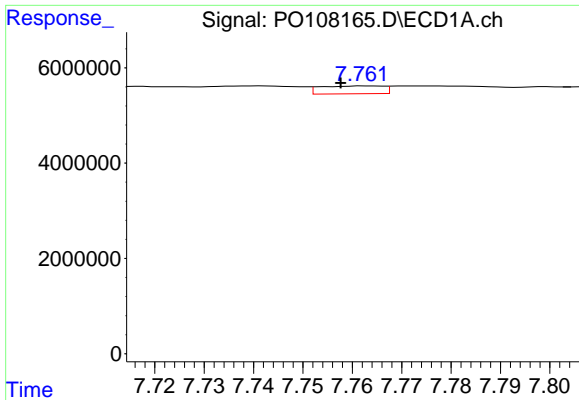
#32 AR-1260-2

R.T.: 7.423 min
 Delta R.T.: 0.028 min
 Response: 8147788
 Conc: 28.79 ng/ml



#32 AR-1260-2

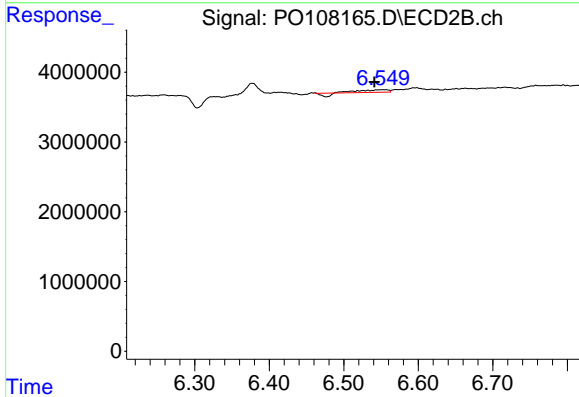
R.T.: 6.377 min
 Delta R.T.: -0.011 min
 Response: 5668540
 Conc: 28.79 ng/ml



#33 AR-1260-3

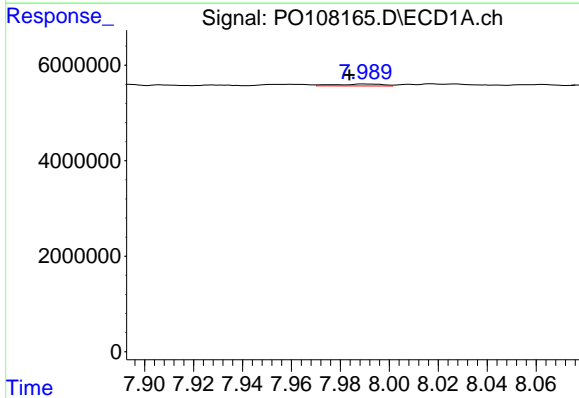
R.T.: 7.763 min
 Delta R.T.: 0.005 min
 Response: 1449346
 Conc: 6.75 ng/ml

Instrument :
 ECD_O
 ClientSampleId :
 HEXANE



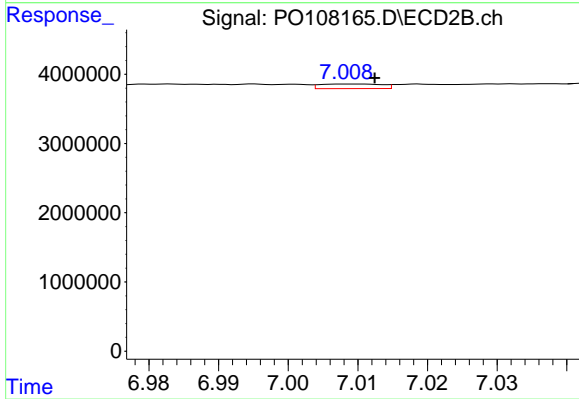
#33 AR-1260-3

R.T.: 6.556 min
 Delta R.T.: 0.015 min
 Response: 742239
 Conc: 3.99 ng/ml



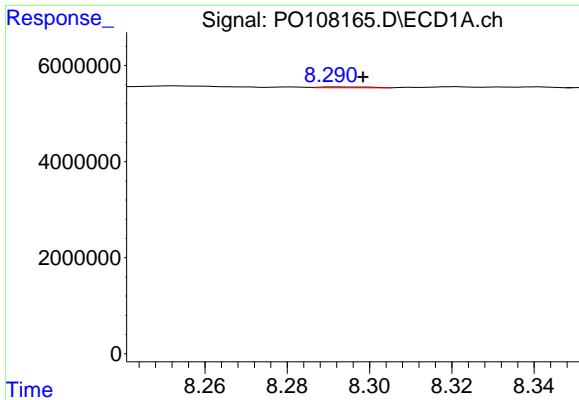
#34 AR-1260-4

R.T.: 7.990 min
 Delta R.T.: 0.006 min
 Response: 560438
 Conc: 2.52 ng/ml



#34 AR-1260-4

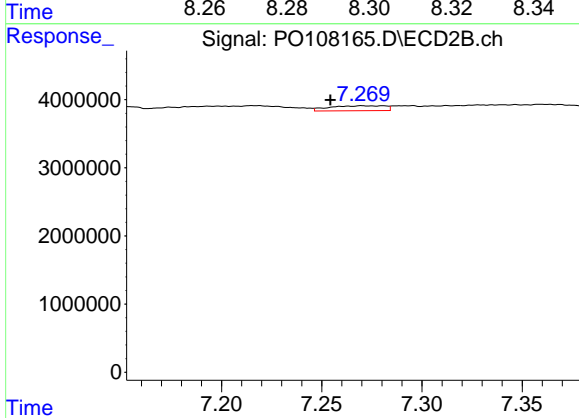
R.T.: 7.009 min
 Delta R.T.: -0.003 min
 Response: 411705
 Conc: 2.57 ng/ml



#35 AR-1260-5

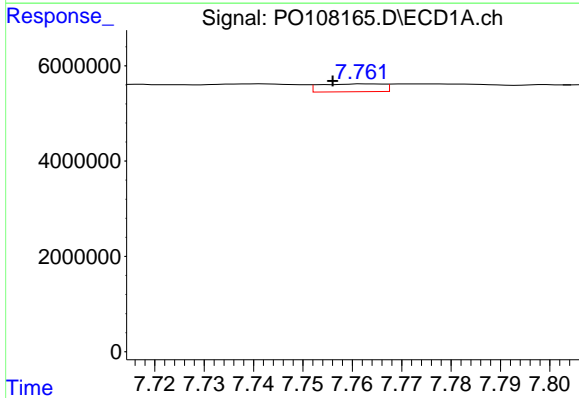
R.T.: 8.292 min
 Delta R.T.: -0.007 min
 Response: 148636
 Conc: 0.39 ng/ml

Instrument :
 ECD_O
 ClientSampleId :
 HEXANE



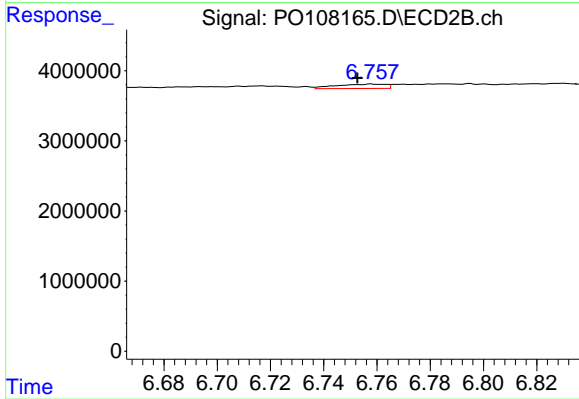
#35 AR-1260-5

R.T.: 7.270 min
 Delta R.T.: 0.016 min
 Response: 1398116
 Conc: 3.56 ng/ml



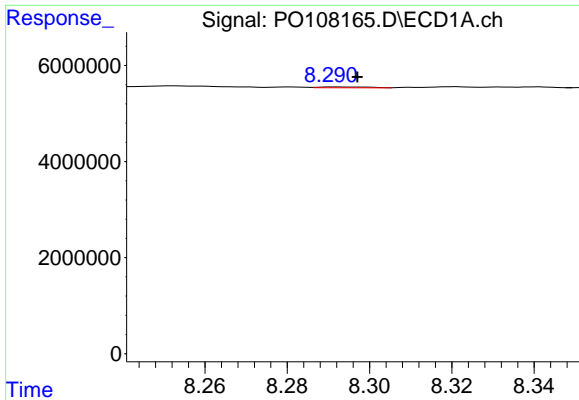
#36 AR-1262-1

R.T.: 7.763 min
 Delta R.T.: 0.007 min
 Response: 1449346
 Conc: 4.48 ng/ml



#36 AR-1262-1

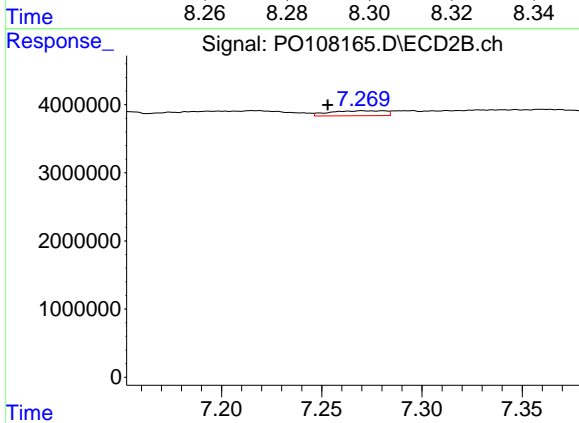
R.T.: 6.758 min
 Delta R.T.: 0.006 min
 Response: 809730
 Conc: 3.56 ng/ml



#37 AR-1262-2

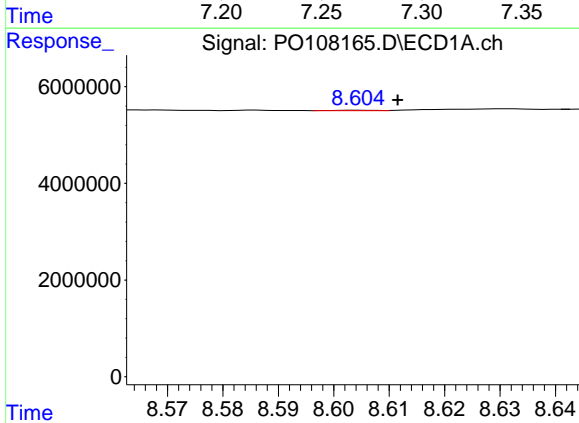
R.T.: 8.292 min
 Delta R.T.: -0.005 min
 Response: 148636
 Conc: 0.33 ng/ml

Instrument :
 ECD_O
 ClientSampleId :
 HEXANE



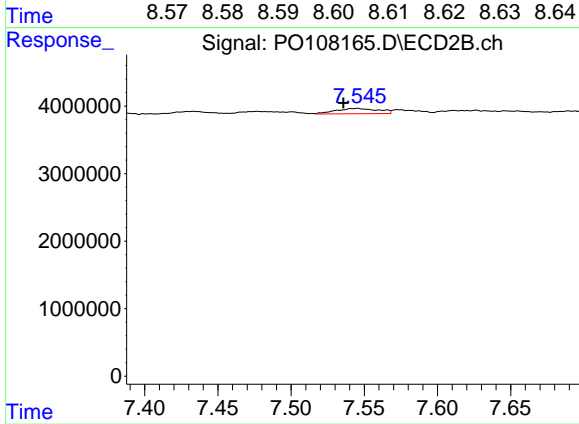
#37 AR-1262-2

R.T.: 7.270 min
 Delta R.T.: 0.017 min
 Response: 1398116
 Conc: 3.28 ng/ml



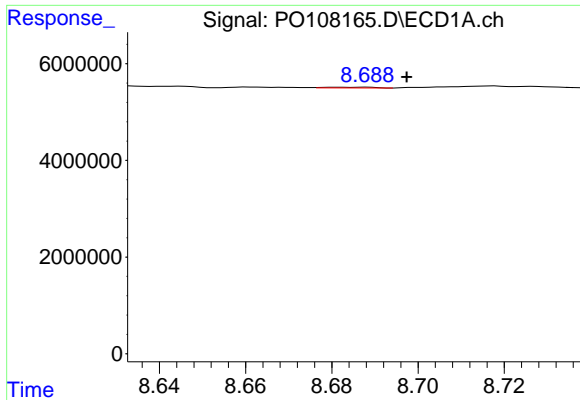
#38 AR-1262-3

R.T.: 8.604 min
 Delta R.T.: -0.007 min
 Response: 49351
 Conc: 0.17 ng/ml



#38 AR-1262-3

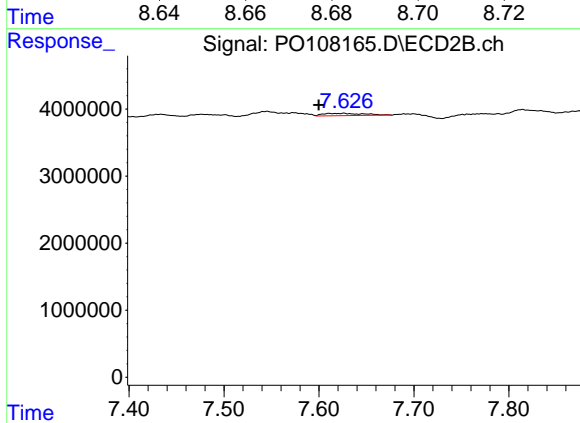
R.T.: 7.545 min
 Delta R.T.: 0.009 min
 Response: 1599364
 Conc: 9.69 ng/ml



#39 AR-1262-4

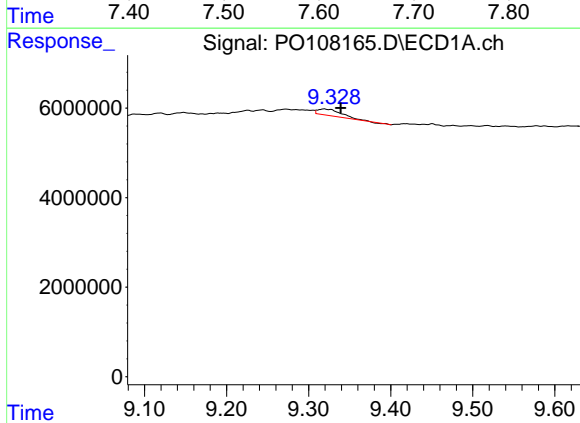
R.T.: 8.682 min
 Delta R.T.: -0.015 min
 Response: 127532
 Conc: 0.57 ng/ml

Instrument :
 ECD_O
 ClientSampleId :
 HEXANE



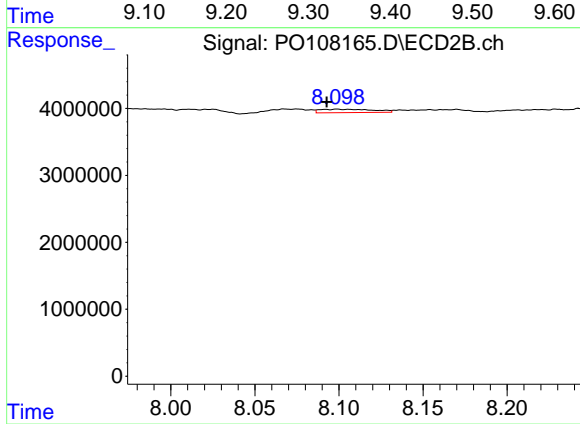
#39 AR-1262-4

R.T.: 7.626 min
 Delta R.T.: 0.026 min
 Response: 1054597
 Conc: 3.32 ng/ml



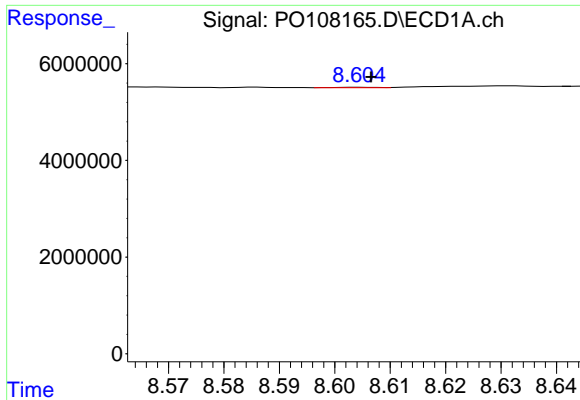
#40 AR-1262-5

R.T.: 9.319 min
 Delta R.T.: -0.020 min
 Response: 2827646
 Conc: 18.60 ng/ml



#40 AR-1262-5

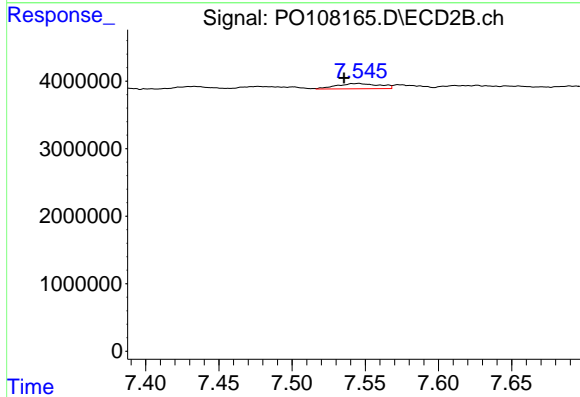
R.T.: 8.100 min
 Delta R.T.: 0.007 min
 Response: 1125943
 Conc: 7.61 ng/ml



#41 AR-1268-1

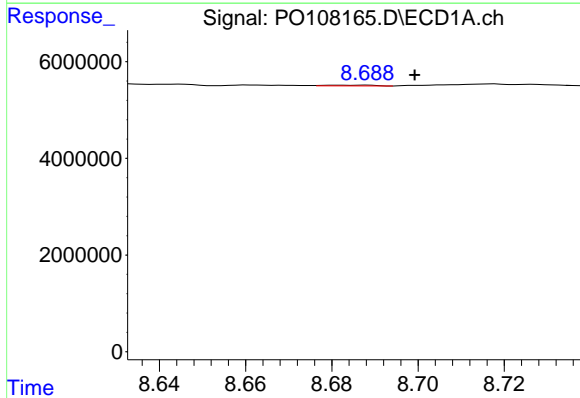
R.T.: 8.604 min
 Delta R.T.: -0.002 min
 Response: 49351
 Conc: 0.10 ng/ml

Instrument :
 ECD_O
 ClientSampleId :
 HEXANE



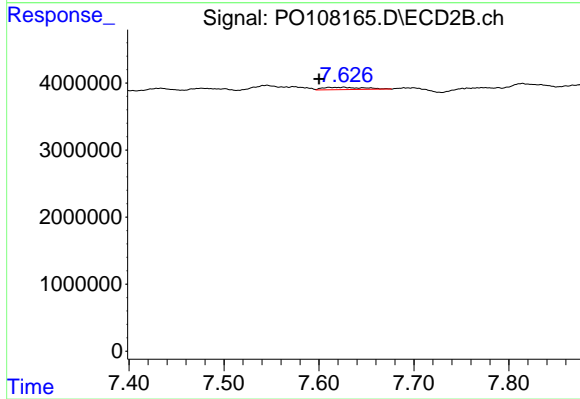
#41 AR-1268-1

R.T.: 7.545 min
 Delta R.T.: 0.009 min
 Response: 1599364
 Conc: 3.23 ng/ml



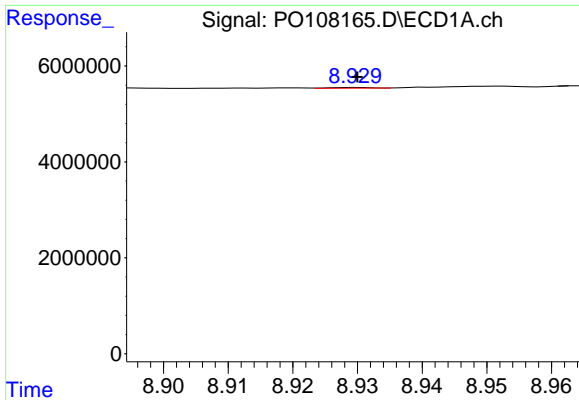
#42 AR-1268-2

R.T.: 8.682 min
 Delta R.T.: -0.017 min
 Response: 127532
 Conc: 0.29 ng/ml



#42 AR-1268-2

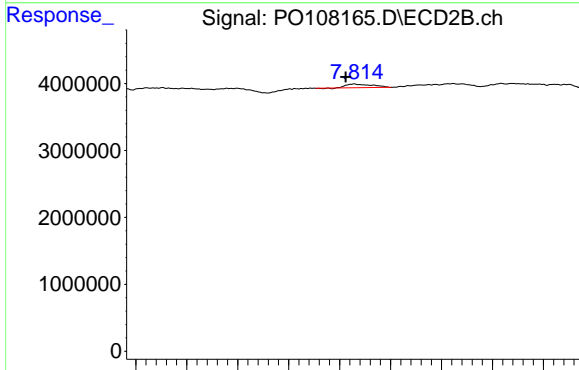
R.T.: 7.626 min
 Delta R.T.: 0.026 min
 Response: 1054597
 Conc: 2.29 ng/ml



#43 AR-1268-3

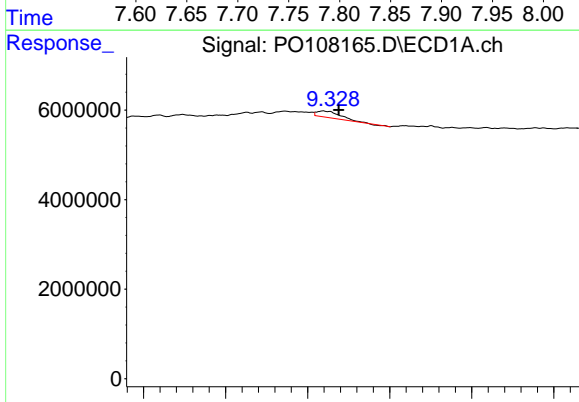
R.T.: 8.930 min
 Delta R.T.: 0.000 min
 Response: 63955
 Conc: 0.17 ng/ml

Instrument :
 ECD_O
 ClientSampleId :
 HEXANE



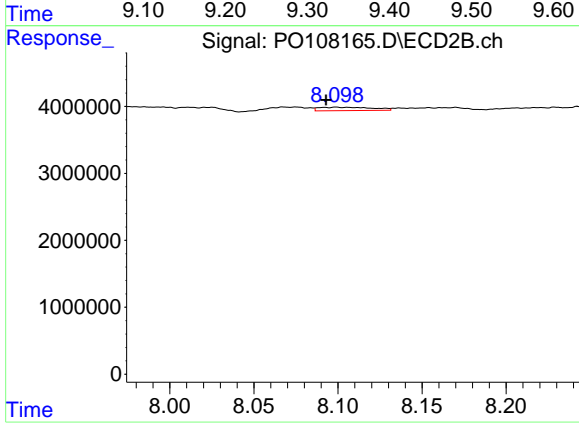
#43 AR-1268-3

R.T.: 7.814 min
 Delta R.T.: 0.008 min
 Response: 994173
 Conc: 2.58 ng/ml



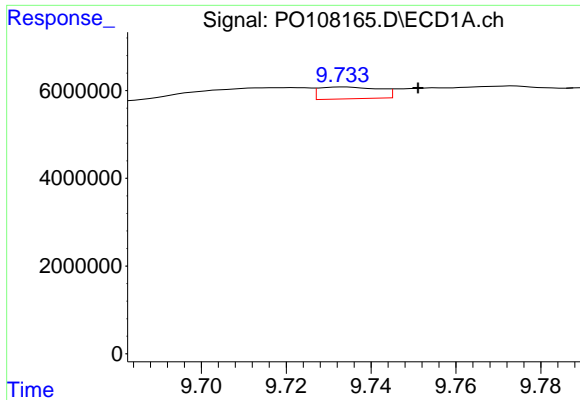
#44 AR-1268-4

R.T.: 9.319 min
 Delta R.T.: -0.018 min
 Response: 2827646
 Conc: 16.85 ng/ml



#44 AR-1268-4

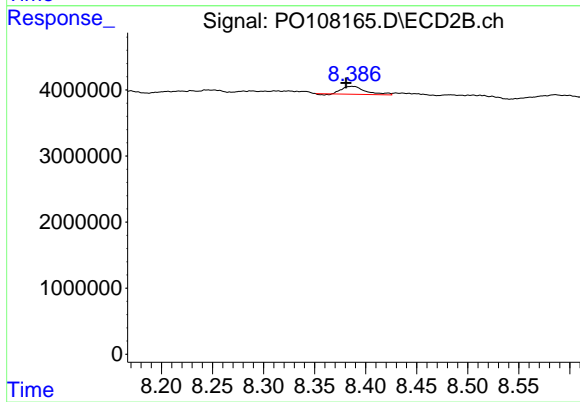
R.T.: 8.100 min
 Delta R.T.: 0.007 min
 Response: 1125943
 Conc: 6.82 ng/ml



#45 AR-1268-5

R.T.: 9.734 min
 Delta R.T.: -0.017 min
 Response: 2670740
 Conc: 2.43 ng/ml

Instrument :
 ECD_O
 ClientSampleId :
 HEXANE



#45 AR-1268-5

R.T.: 8.387 min
 Delta R.T.: 0.006 min
 Response: 1915620
 Conc: 1.48 ng/ml