

Data Path : Z:\pestpcbsrv\HPCHEM1\ECD_0\Data\PO112124\
 Data File : PO108171.D
 Signal(s) : Signal #1: ECD1A.ch Signal #2: ECD2B.ch
 Acq On : 21 Nov 2024 11:58
 Operator : YP/AJ
 Sample : AR1660CCC500
 Misc :
 ALS Vial : 3 Sample Multiplier: 1

Instrument :
 ECD_0
 ClientSampleId :
 AR1660CCC500

Integration File signal 1: autoint1.e
 Integration File signal 2: autoint2.e
 Quant Time: Nov 21 13:00:02 2024
 Quant Method : Z:\pestpcbsrv\HPCHEM1\ECD_0\methods\PO111824.M
 Quant Title : GC EXTRACTABLES
 QLast Update : Tue Nov 19 03:13:56 2024
 Response via : Initial Calibration
 Integrator: ChemStation

Volume Inj. : 2 µl
 Signal #1 Phase : ZB-MR1 Signal #2 Phase: ZB-MR2
 Signal #1 Info : 30Mx0.32mmx 0.50µ Signal #2 Info : 30M x 0.32mm x 0.25µm

Compound	RT#1	RT#2	Resp#1	Resp#2	ng/ml	ng/ml
System Monitoring Compounds						
1) SA Tetrachlo...	4.371	3.638	498.5E6	198.8E6	57.263	58.624
2) SA Decachlor...	10.103	8.636	181.2E6	182.7E6	59.327	53.702
Target Compounds						
3) L1 AR-1016-1	5.528	4.719	150.2E6	62083680	558.674	568.148
4) L1 AR-1016-2	5.550	4.738	214.6E6	87736156	553.569	573.805
5) L1 AR-1016-3	5.613	4.914	134.6E6	46582396	538.584	566.942
6) L1 AR-1016-4	5.711	4.956	107.9E6	34955357	552.733	548.985
7) L1 AR-1016-5	6.007	5.169	104.1E6	50230609	561.480	579.383
8) L2 AR-1221-1	4.567	3.848	17764676	5973568	163.847	168.380
9) L2 AR-1221-2	4.658	3.936	26265163	9558039	326.404	328.037
10) L2 AR-1221-3	4.733	4.011	89629469	33511686	384.551	376.397
11) L3 AR-1232-1	4.733	4.011	89629469	33511686	521.227	525.998
12) L3 AR-1232-2	5.261	4.738	113.8E6	87736156	1208.955	1353.384
13) L3 AR-1232-3	5.550	4.914	214.6E6	46582396	1326.633	1402.219
14) L3 AR-1232-4	5.711	4.997	107.9E6	43863888	1412.849	1448.070
15) L3 AR-1232-5	5.803	5.169	96909273	50230609	1832.821	1600.894
16) L4 AR-1242-1	5.528	4.719	150.2E6	62083680	678.703	701.557
17) L4 AR-1242-2	5.550	4.738	214.6E6	87736156	682.362	709.748
18) L4 AR-1242-3	5.613	4.914	134.6E6	46582396	664.793	702.774
19) L4 AR-1242-4	5.711	4.997	107.9E6	43863888	691.373	700.939
20) L4 AR-1242-5	6.450	5.520	33602359	48758297	208.913	583.368 #
21) L5 AR-1248-1	5.528	4.719	150.2E6	62083680	864.500	894.470
22) L5 AR-1248-2	5.803	4.956	96909273	34955357	402.937	374.411
23) L5 AR-1248-3	6.007	4.997	104.1E6	43863888	405.934	444.318
24) L5 AR-1248-4	6.410	5.169	34934239	50230609	127.980	417.770 #
25) L5 AR-1248-5	6.450	5.561	33602359	13369469	123.998	107.274
26) L6 AR-1254-1	6.386	5.520	84712289	48758297	305.843	275.376
27) L6 AR-1254-2	6.607	5.668	79454657	36217605	194.988	232.685
28) L6 AR-1254-3	6.973	6.085	44118373	66920151	112.385	258.312 #
29) L6 AR-1254-4	7.260	6.298	31985680	10074353	114.588	69.564 #
30) L6 AR-1254-5	7.682	6.715	185.0E6	123.1E6	689.567	537.434
31) L7 AR-1260-1	7.141	6.201	158.0E6	92376910	575.801	570.436
32) L7 AR-1260-2	7.398	6.388	171.1E6	111.0E6	604.640	563.725
33) L7 AR-1260-3	7.763	6.542	123.9E6	103.4E6	576.676	555.659
34) L7 AR-1260-4	7.989	7.013	130.9E6	88931131	589.477	555.838
35) L7 AR-1260-5	8.305	7.254	230.5E6	217.7E6	604.026	554.389
36) L8 AR-1262-1	7.763	6.754	123.9E6	93218876	383.203	409.673
37) L8 AR-1262-2	8.305	7.254	230.5E6	217.7E6	512.139	509.964
38) L8 AR-1262-3	8.625	7.537	141.3E6	48027073	488.796	290.878 #
39) L8 AR-1262-4	8.707	7.601	91910196	159.3E6	411.911	501.166
40) L8 AR-1262-5	9.349	8.095	64916010	58959545	427.018	398.318
41) L9 AR-1268-1	8.625	7.537	141.3E6	48027073	285.428	97.107 #

Data Path : Z:\pestpcbsrv\HPCHEM1\ECD_0\Data\PO112124\
 Data File : PO108171.D
 Signal(s) : Signal #1: ECD1A.ch Signal #2: ECD2B.ch
 Acq On : 21 Nov 2024 11:58
 Operator : YP/AJ
 Sample : AR1660CCC500
 Misc :
 ALS Vial : 3 Sample Multiplier: 1

Instrument :
 ECD_0
 ClientSampleId :
 AR1660CCC500

Integration File signal 1: autoint1.e
 Integration File signal 2: autoint2.e
 Quant Time: Nov 21 13:00:02 2024
 Quant Method : Z:\pestpcbsrv\HPCHEM1\ECD_0\methods\PO111824.M
 Quant Title : GC EXTRACTABLES
 QLast Update : Tue Nov 19 03:13:56 2024
 Response via : Initial Calibration
 Integrator: ChemStation

Volume Inj. : 2 µl
 Signal #1 Phase : ZB-MR1 Signal #2 Phase: ZB-MR2
 Signal #1 Info : 30Mx0.32mmx 0.50µ Signal #2 Info : 30M x 0.32mm x 0.25µm

	Compound	RT#1	RT#2	Resp#1	Resp#2	ng/ml	ng/ml
42)	L9 AR-1268-2	8.707	7.601	91910196	159.3E6	206.589	345.557 #
43)	L9 AR-1268-3	8.940	7.808	2835489	2627702	7.745	6.821
44)	L9 AR-1268-4	9.349	8.095	64916010	58959545	386.881	356.890
45)	L9 AR-1268-5	9.763	8.384	18664803	16768175	16.978	12.920

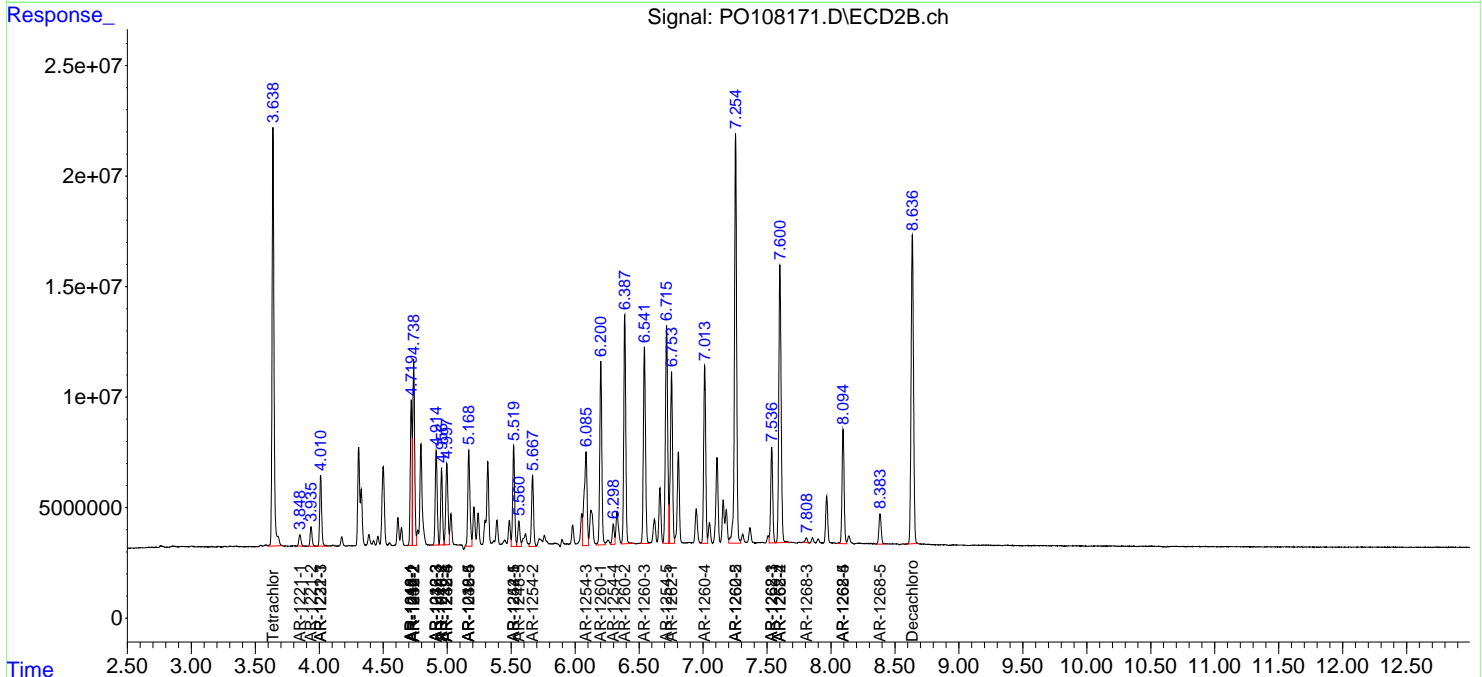
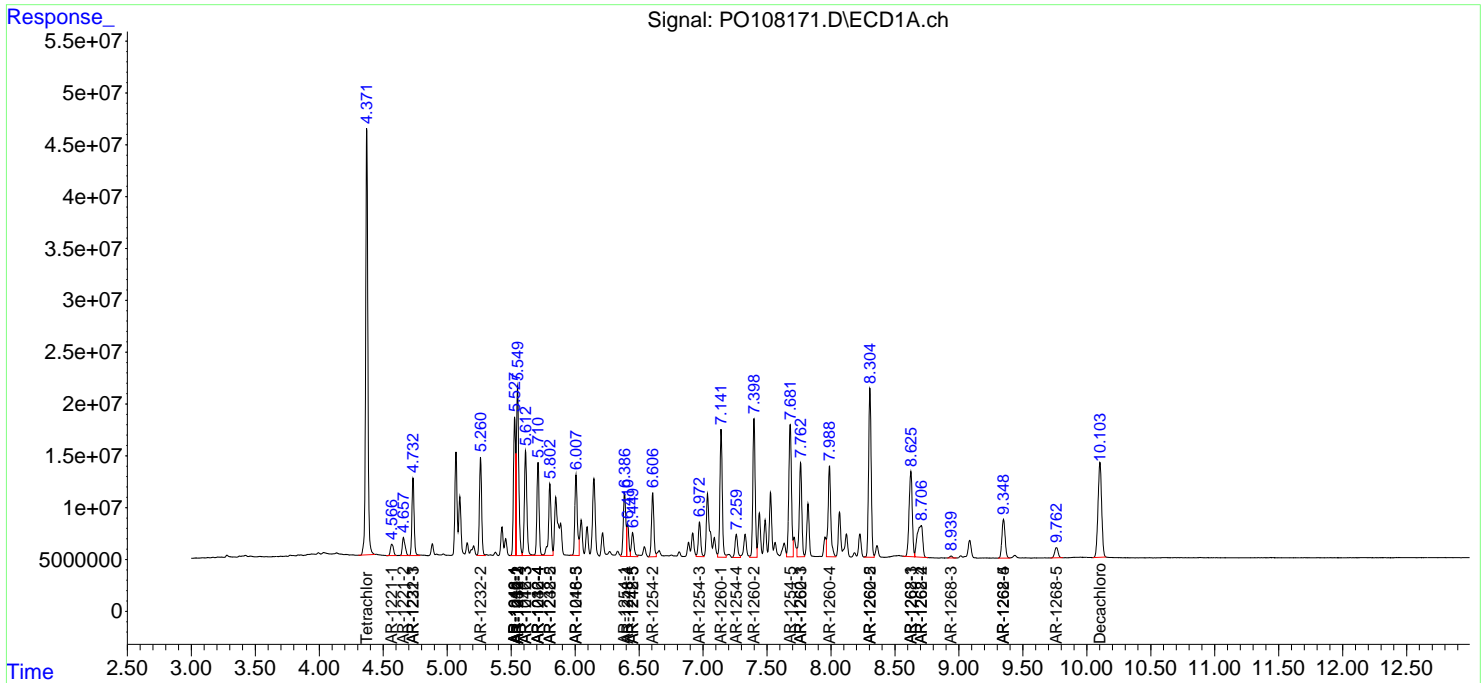
(f)=RT Delta > 1/2 Window (#)=Amounts differ by > 25% (m)=manual int.

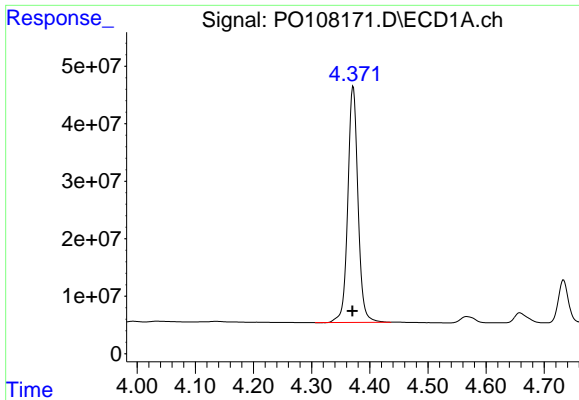
Data Path : Z:\pestpcbsrv\HPCHEM1\ECD_O\Data\PO112124\
 Data File : PO108171.D
 Signal(s) : Signal #1: ECD1A.ch Signal #2: ECD2B.ch
 Acq On : 21 Nov 2024 11:58
 Operator : YP/AJ
 Sample : AR1660CCC500
 Misc :
 ALS Vial : 3 Sample Multiplier: 1

Instrument :
 ECD_O
ClientSampleId :
 AR1660CCC500

Integration File signal 1: autoint1.e
 Integration File signal 2: autoint2.e
 Quant Time: Nov 21 13:00:02 2024
 Quant Method : Z:\pestpcbsrv\HPCHEM1\ECD_O\methods\PO111824.M
 Quant Title : GC EXTRACTABLES
 QLast Update : Tue Nov 19 03:13:56 2024
 Response via : Initial Calibration
 Integrator: ChemStation

Volume Inj. : 2 µl
 Signal #1 Phase : ZB-MR1 Signal #2 Phase: ZB-MR2
 Signal #1 Info : 30Mx0.32mmx 0.50µ Signal #2 Info : 30M x 0.32mm x 0.25µm

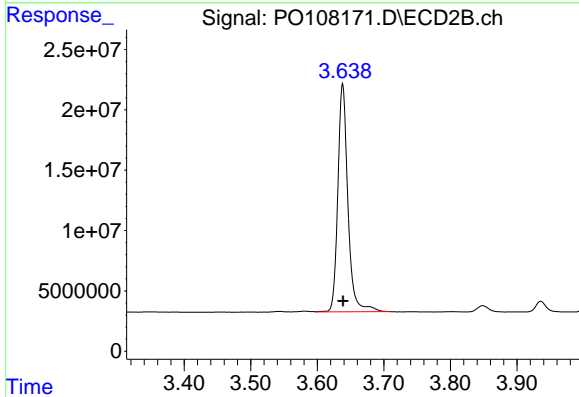




#1 Tetrachloro-m-xylene

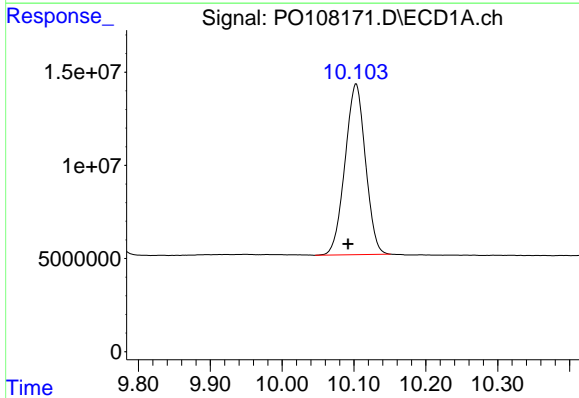
R.T.: 4.371 min
 Delta R.T.: 0.001 min
 Response: 498537603
 Conc: 57.26 ng/ml

Instrument :
 ECD_O
 ClientSampleId :
 AR1660CCC500



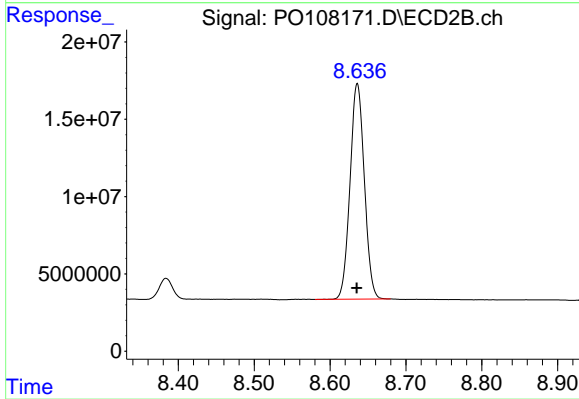
#1 Tetrachloro-m-xylene

R.T.: 3.638 min
 Delta R.T.: 0.000 min
 Response: 198758280
 Conc: 58.62 ng/ml



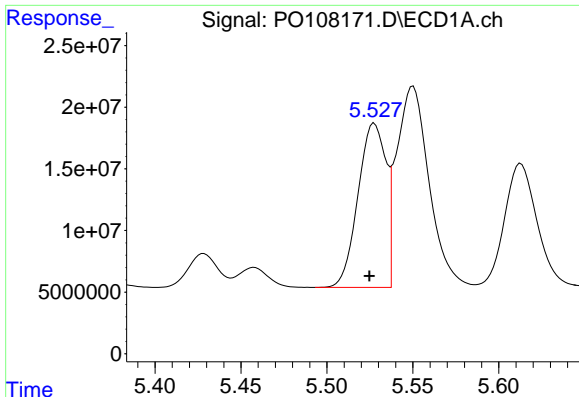
#2 Decachlorobiphenyl

R.T.: 10.103 min
 Delta R.T.: 0.012 min
 Response: 181197305
 Conc: 59.33 ng/ml



#2 Decachlorobiphenyl

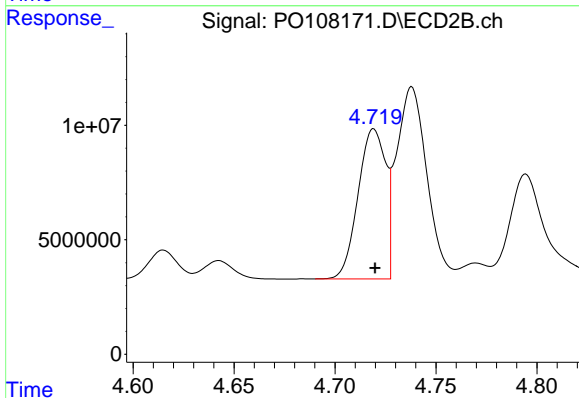
R.T.: 8.636 min
 Delta R.T.: 0.000 min
 Response: 182678251
 Conc: 53.70 ng/ml



#3 AR-1016-1

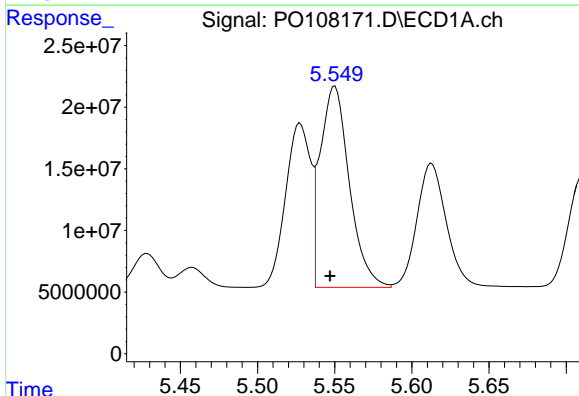
R.T.: 5.528 min
 Delta R.T.: 0.003 min
 Response: 150242686
 Conc: 558.67 ng/ml

Instrument :
 ECD_O
 ClientSampleId :
 AR1660CCC500



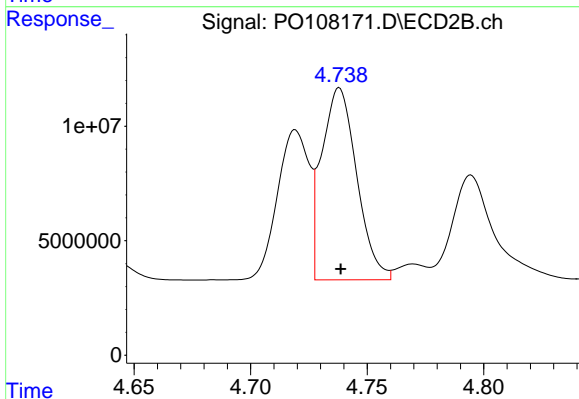
#3 AR-1016-1

R.T.: 4.719 min
 Delta R.T.: 0.000 min
 Response: 62083680
 Conc: 568.15 ng/ml



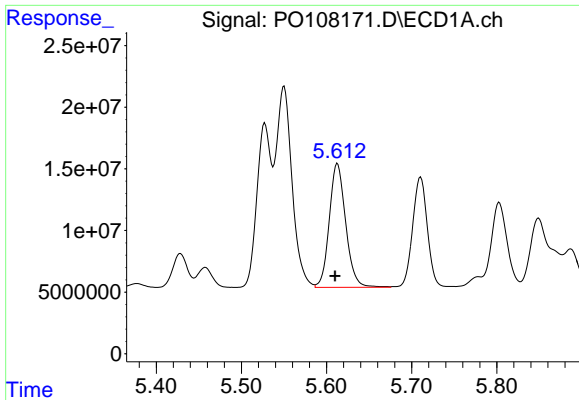
#4 AR-1016-2

R.T.: 5.550 min
 Delta R.T.: 0.003 min
 Response: 214603732
 Conc: 553.57 ng/ml



#4 AR-1016-2

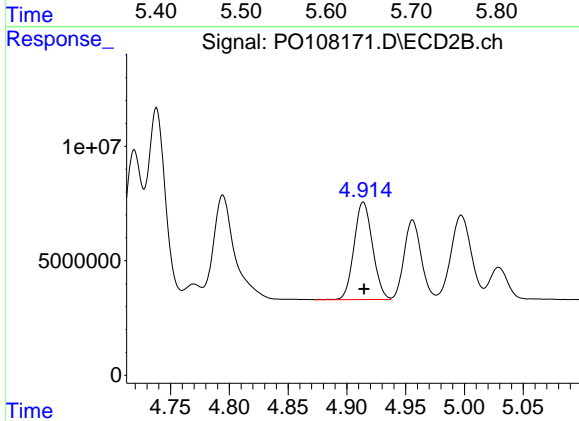
R.T.: 4.738 min
 Delta R.T.: 0.000 min
 Response: 87736156
 Conc: 573.80 ng/ml



#5 AR-1016-3

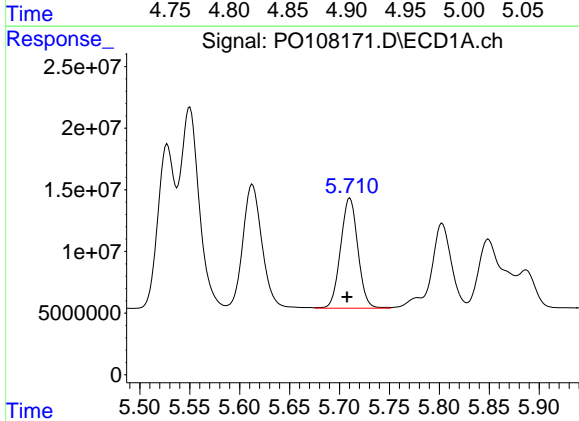
R.T.: 5.613 min
 Delta R.T.: 0.003 min
 Response: 134599426
 Conc: 538.58 ng/ml

Instrument :
 ECD_O
 ClientSampleId :
 AR1660CCC500



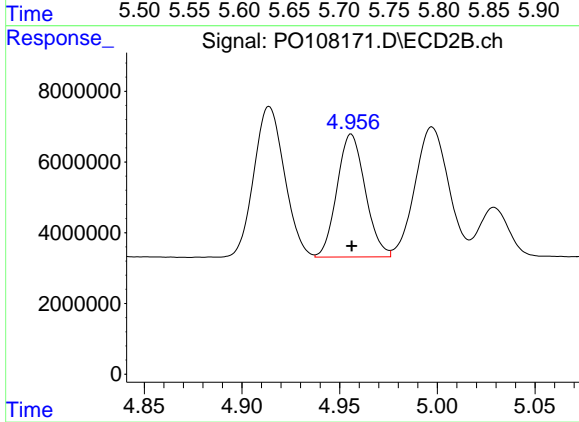
#5 AR-1016-3

R.T.: 4.914 min
 Delta R.T.: 0.000 min
 Response: 46582396
 Conc: 566.94 ng/ml



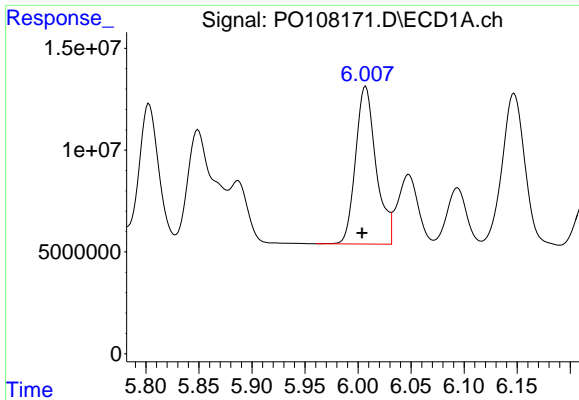
#6 AR-1016-4

R.T.: 5.711 min
 Delta R.T.: 0.003 min
 Response: 107931708
 Conc: 552.73 ng/ml



#6 AR-1016-4

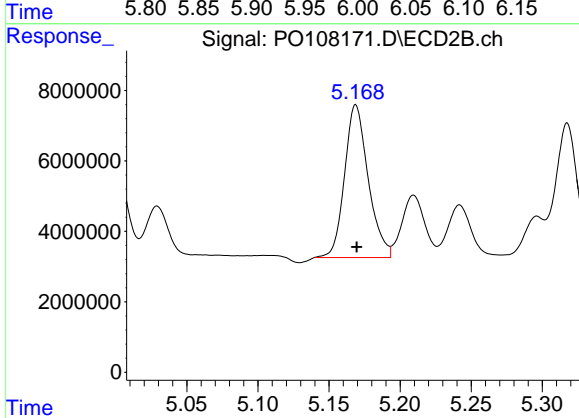
R.T.: 4.956 min
 Delta R.T.: 0.000 min
 Response: 34955357
 Conc: 548.98 ng/ml



#7 AR-1016-5

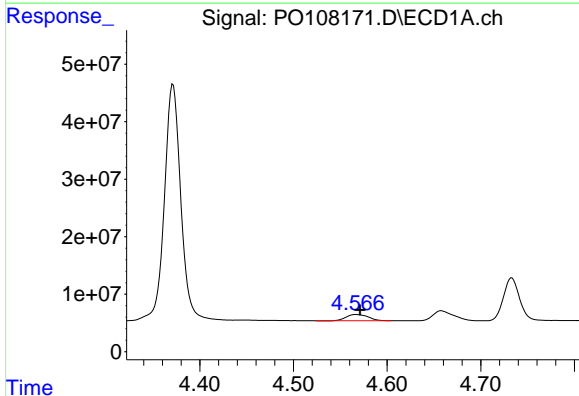
R.T.: 6.007 min
 Delta R.T.: 0.003 min
 Response: 104115436
 Conc: 561.48 ng/ml

Instrument :
 ECD_O
 ClientSampleId :
 AR1660CCC500



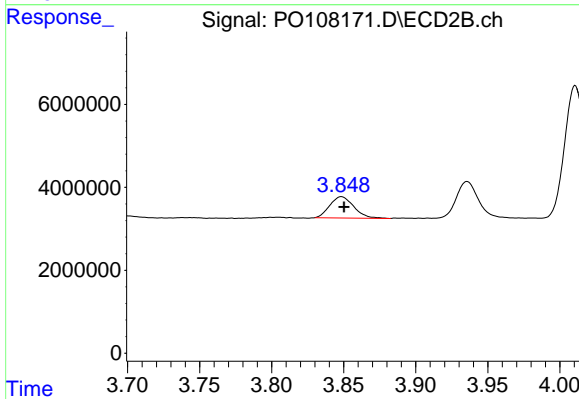
#7 AR-1016-5

R.T.: 5.169 min
 Delta R.T.: 0.000 min
 Response: 50230609
 Conc: 579.38 ng/ml



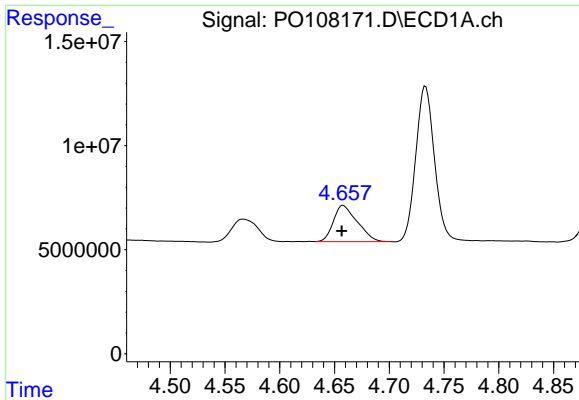
#8 AR-1221-1

R.T.: 4.567 min
 Delta R.T.: -0.004 min
 Response: 17764676
 Conc: 163.85 ng/ml



#8 AR-1221-1

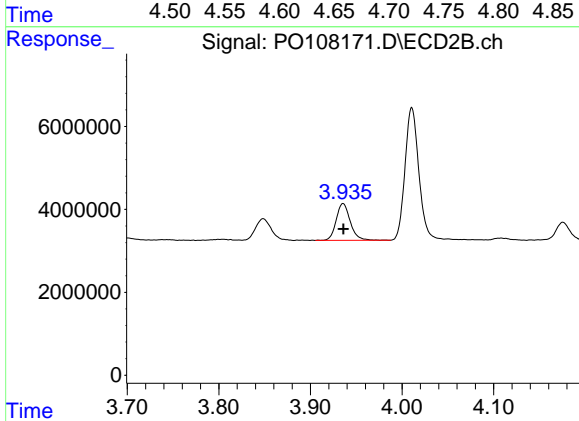
R.T.: 3.848 min
 Delta R.T.: -0.002 min
 Response: 5973568
 Conc: 168.38 ng/ml



#9 AR-1221-2

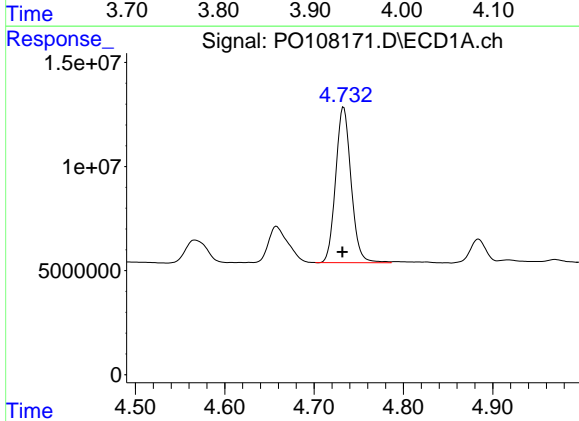
R.T.: 4.658 min
 Delta R.T.: 0.001 min
 Response: 26265163
 Conc: 326.40 ng/ml

Instrument :
 ECD_O
 ClientSampleId :
 AR1660CCC500



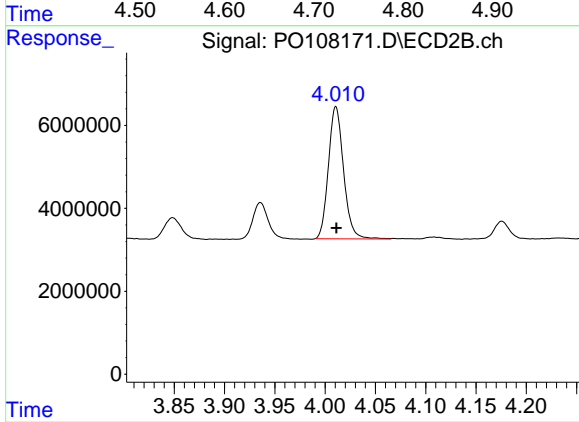
#9 AR-1221-2

R.T.: 3.936 min
 Delta R.T.: 0.000 min
 Response: 9558039
 Conc: 328.04 ng/ml



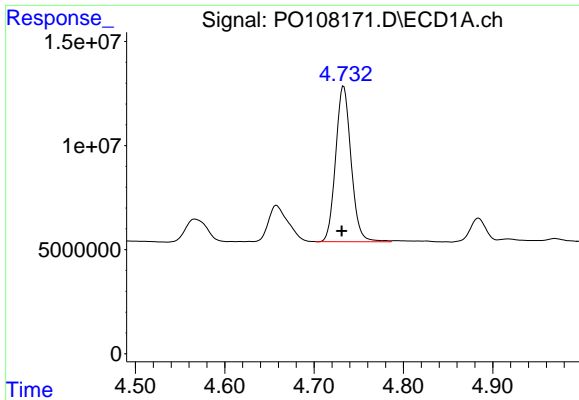
#10 AR-1221-3

R.T.: 4.733 min
 Delta R.T.: 0.001 min
 Response: 89629469
 Conc: 384.55 ng/ml



#10 AR-1221-3

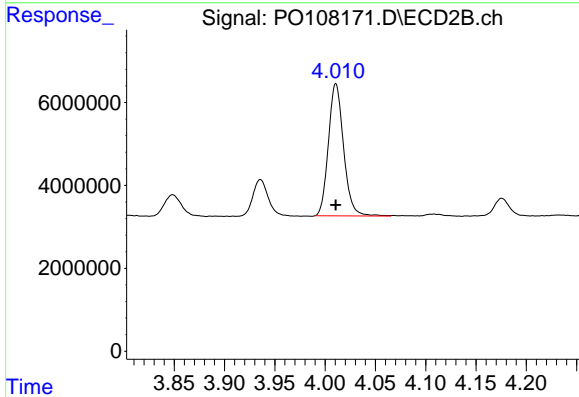
R.T.: 4.011 min
 Delta R.T.: 0.000 min
 Response: 33511686
 Conc: 376.40 ng/ml



#11 AR-1232-1

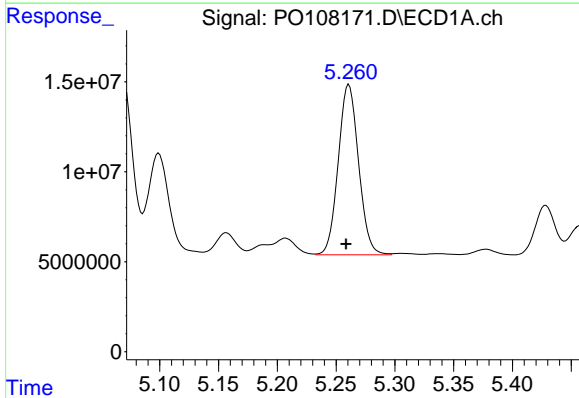
R.T.: 4.733 min
 Delta R.T.: 0.002 min
 Response: 89629469
 Conc: 521.23 ng/ml

Instrument :
 ECD_O
 ClientSampleId :
 AR1660CCC500



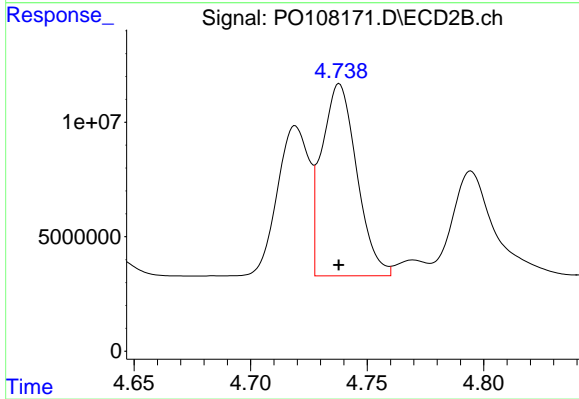
#11 AR-1232-1

R.T.: 4.011 min
 Delta R.T.: 0.000 min
 Response: 33511686
 Conc: 526.00 ng/ml



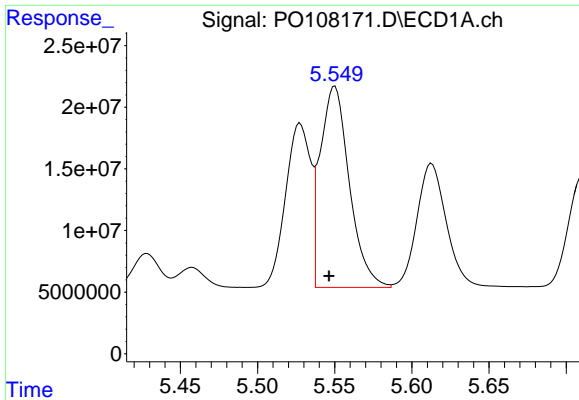
#12 AR-1232-2

R.T.: 5.261 min
 Delta R.T.: 0.003 min
 Response: 113840080
 Conc: 1208.96 ng/ml



#12 AR-1232-2

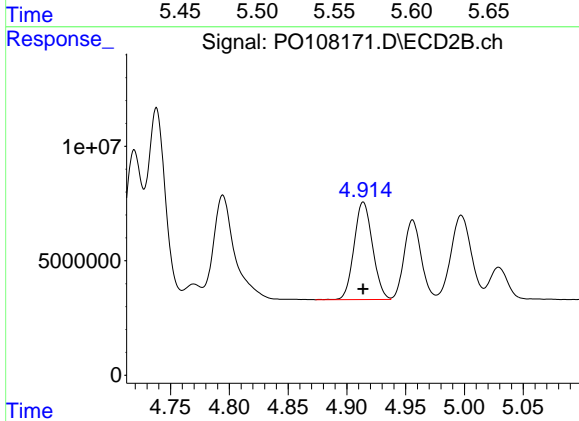
R.T.: 4.738 min
 Delta R.T.: 0.000 min
 Response: 87736156
 Conc: 1353.38 ng/ml



#13 AR-1232-3

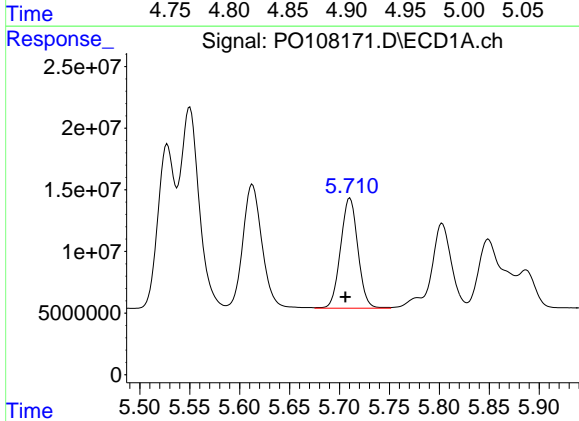
R.T.: 5.550 min
 Delta R.T.: 0.004 min
 Response: 214603732
 Conc: 1326.63 ng/ml

Instrument :
 ECD_O
 ClientSampleId :
 AR1660CCC500



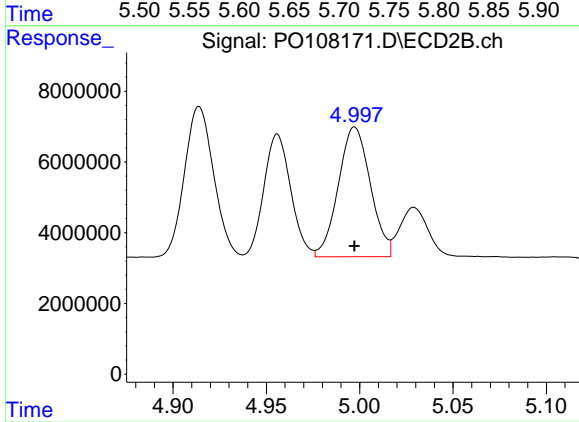
#13 AR-1232-3

R.T.: 4.914 min
 Delta R.T.: 0.000 min
 Response: 46582396
 Conc: 1402.22 ng/ml



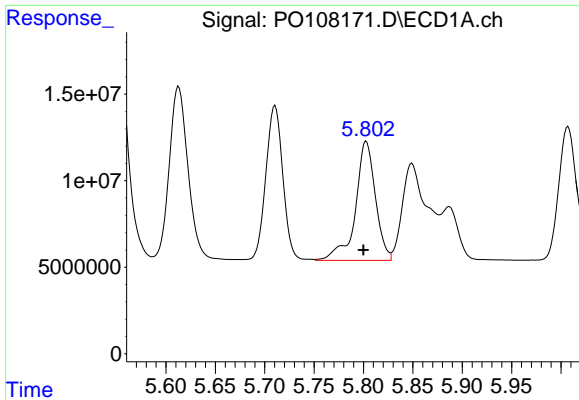
#14 AR-1232-4

R.T.: 5.711 min
 Delta R.T.: 0.004 min
 Response: 107931708
 Conc: 1412.85 ng/ml



#14 AR-1232-4

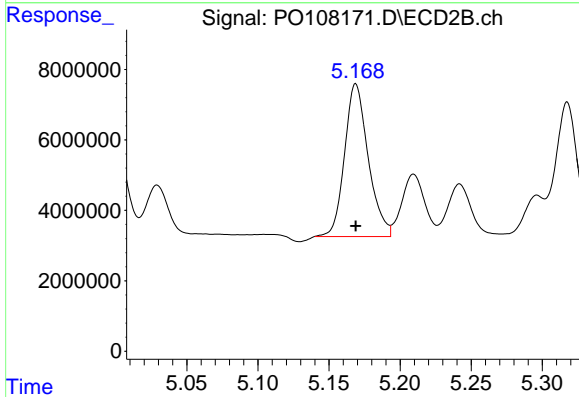
R.T.: 4.997 min
 Delta R.T.: 0.000 min
 Response: 43863888
 Conc: 1448.07 ng/ml



#15 AR-1232-5

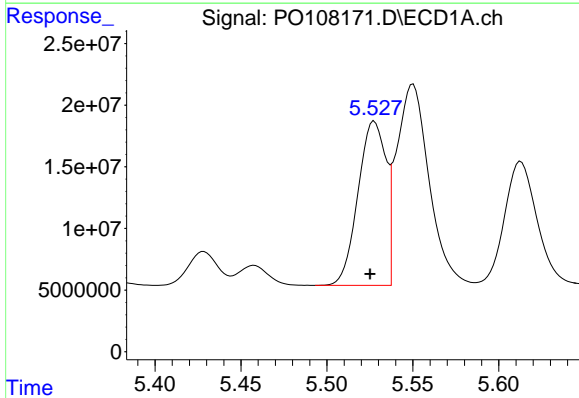
R.T.: 5.803 min
 Delta R.T.: 0.003 min
 Response: 96909273
 Conc: 1832.82 ng/ml

Instrument :
 ECD_O
 ClientSampleId :
 AR1660CCC500



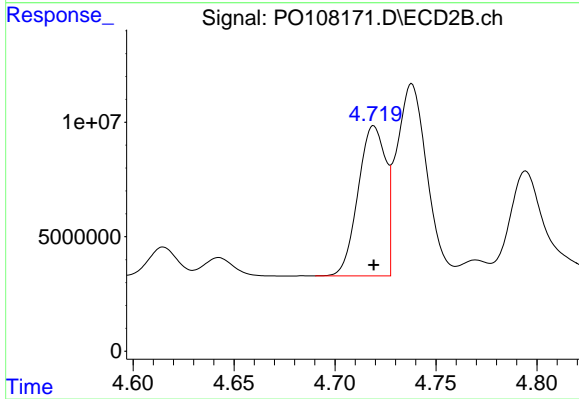
#15 AR-1232-5

R.T.: 5.169 min
 Delta R.T.: 0.000 min
 Response: 50230609
 Conc: 1600.89 ng/ml



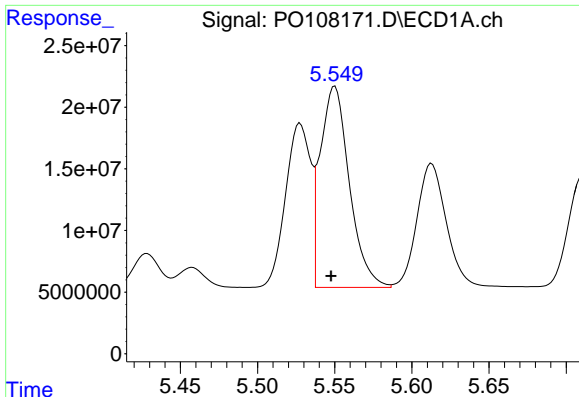
#16 AR-1242-1

R.T.: 5.528 min
 Delta R.T.: 0.002 min
 Response: 150242686
 Conc: 678.70 ng/ml



#16 AR-1242-1

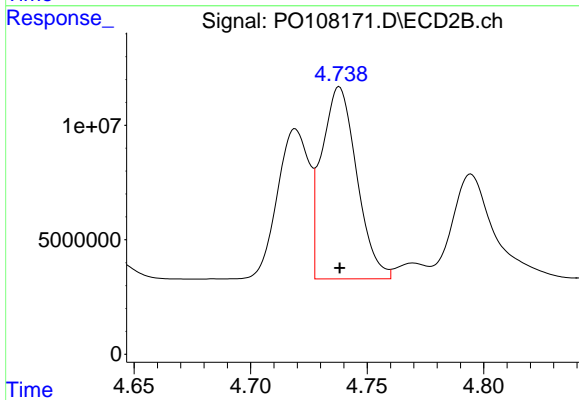
R.T.: 4.719 min
 Delta R.T.: 0.000 min
 Response: 62083680
 Conc: 701.56 ng/ml



#17 AR-1242-2

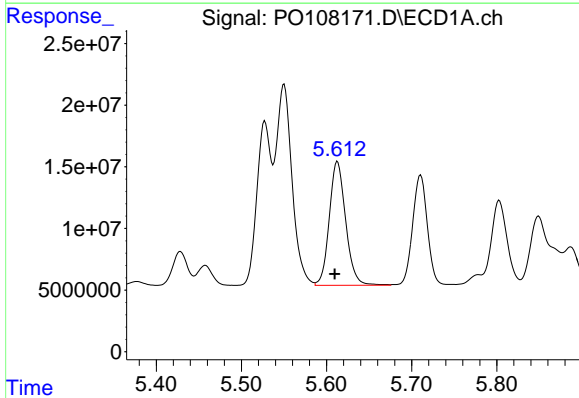
R.T.: 5.550 min
 Delta R.T.: 0.003 min
 Response: 214603732
 Conc: 682.36 ng/ml

Instrument :
 ECD_O
 ClientSampleId :
 AR1660CCC500



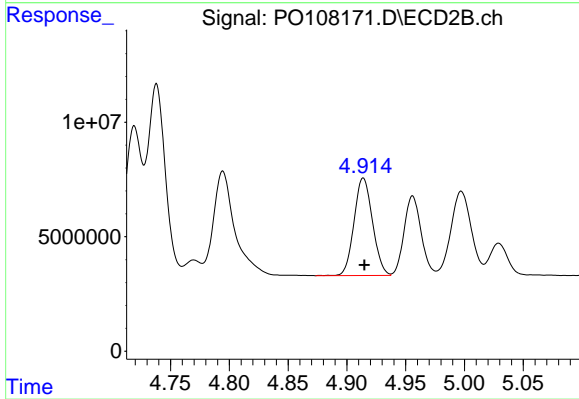
#17 AR-1242-2

R.T.: 4.738 min
 Delta R.T.: 0.000 min
 Response: 87736156
 Conc: 709.75 ng/ml



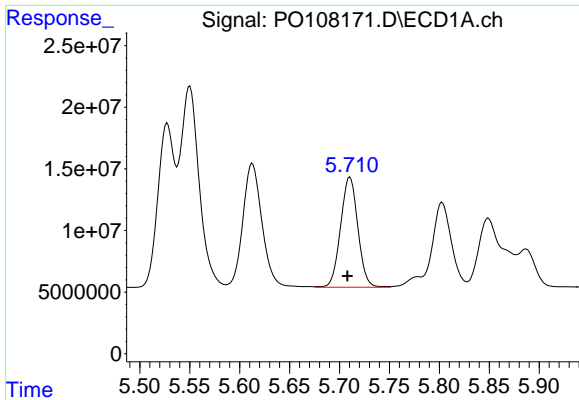
#18 AR-1242-3

R.T.: 5.613 min
 Delta R.T.: 0.003 min
 Response: 134599426
 Conc: 664.79 ng/ml



#18 AR-1242-3

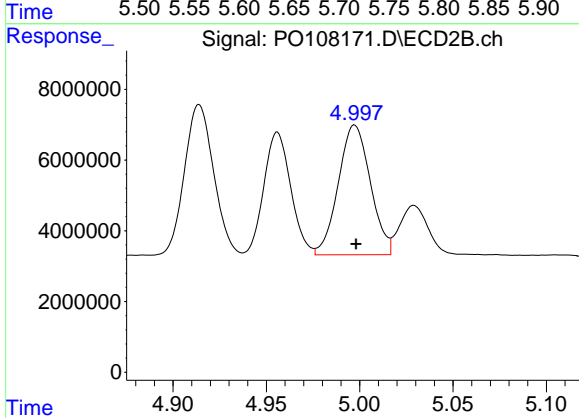
R.T.: 4.914 min
 Delta R.T.: 0.000 min
 Response: 46582396
 Conc: 702.77 ng/ml



#19 AR-1242-4

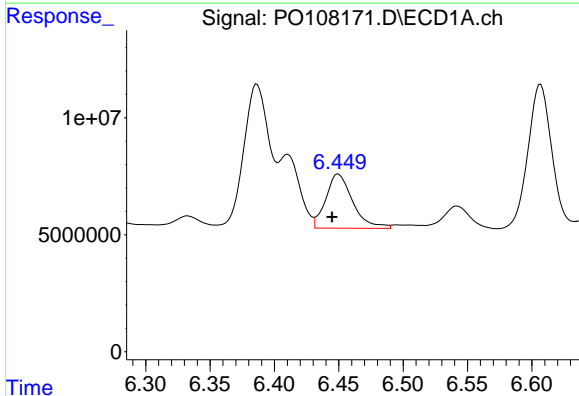
R.T.: 5.711 min
 Delta R.T.: 0.003 min
 Response: 107931708
 Conc: 691.37 ng/ml

Instrument :
 ECD_O
 ClientSampleId :
 AR1660CCC500



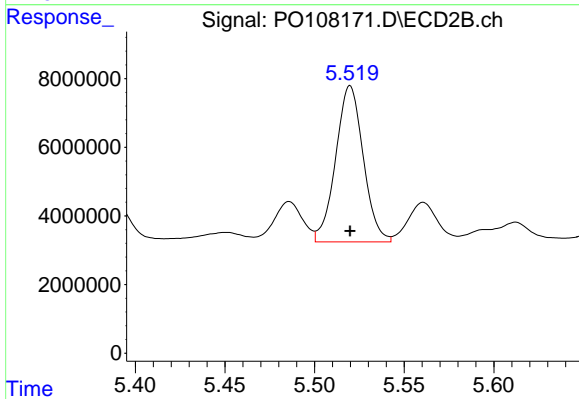
#19 AR-1242-4

R.T.: 4.997 min
 Delta R.T.: 0.000 min
 Response: 43863888
 Conc: 700.94 ng/ml



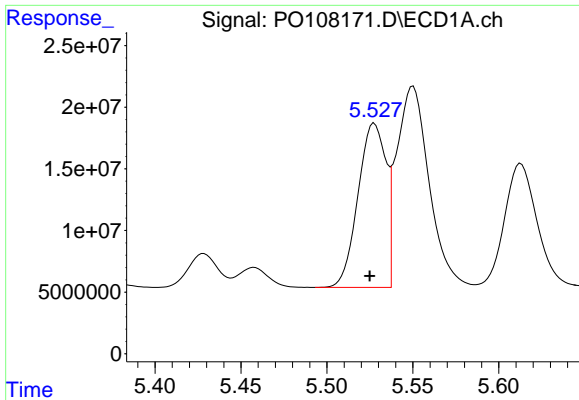
#20 AR-1242-5

R.T.: 6.450 min
 Delta R.T.: 0.005 min
 Response: 33602359
 Conc: 208.91 ng/ml



#20 AR-1242-5

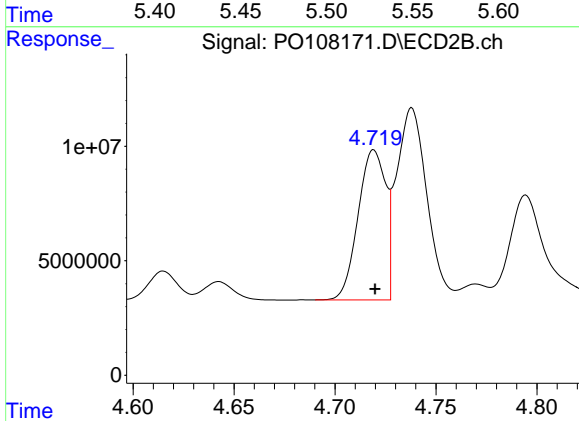
R.T.: 5.520 min
 Delta R.T.: 0.000 min
 Response: 48758297
 Conc: 583.37 ng/ml



#21 AR-1248-1

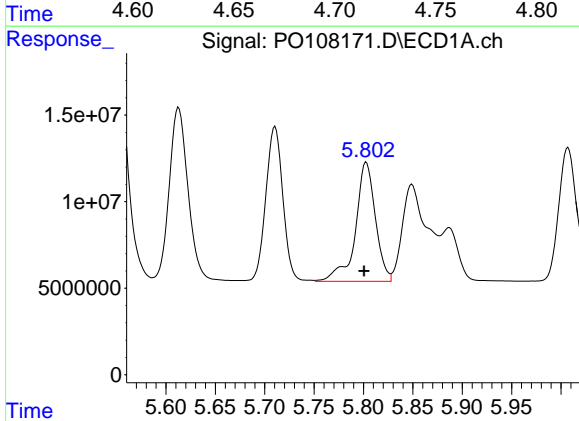
R.T.: 5.528 min
 Delta R.T.: 0.003 min
 Response: 150242686
 Conc: 864.50 ng/ml

Instrument :
 ECD_O
 ClientSampleId :
 AR1660CCC500



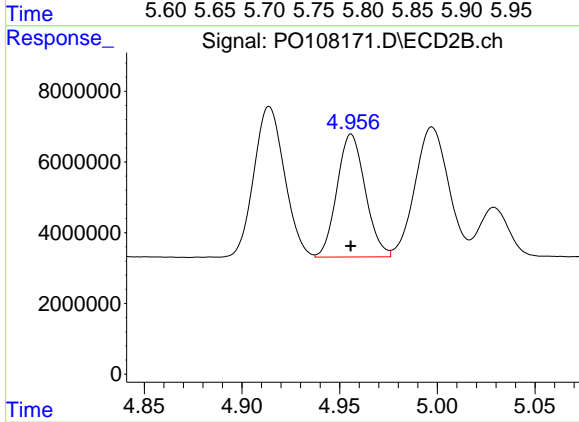
#21 AR-1248-1

R.T.: 4.719 min
 Delta R.T.: 0.000 min
 Response: 62083680
 Conc: 894.47 ng/ml



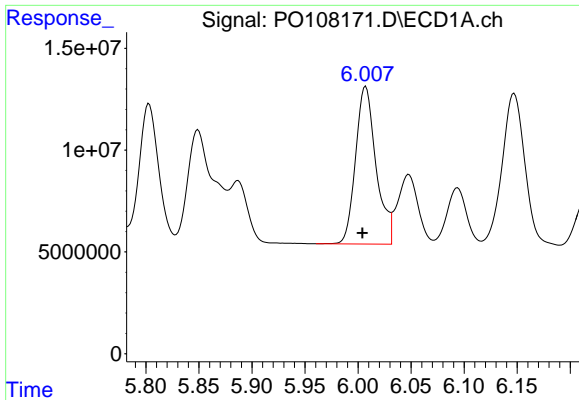
#22 AR-1248-2

R.T.: 5.803 min
 Delta R.T.: 0.002 min
 Response: 96909273
 Conc: 402.94 ng/ml



#22 AR-1248-2

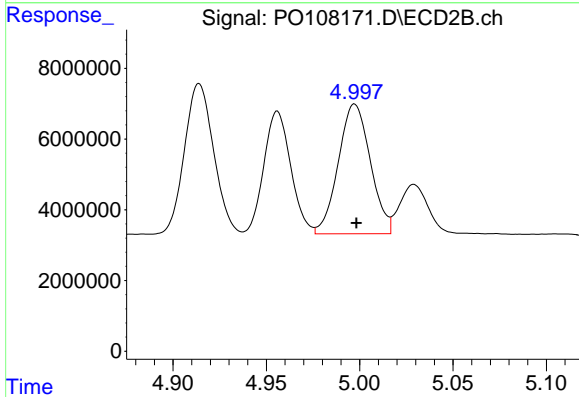
R.T.: 4.956 min
 Delta R.T.: 0.000 min
 Response: 34955357
 Conc: 374.41 ng/ml



#23 AR-1248-3

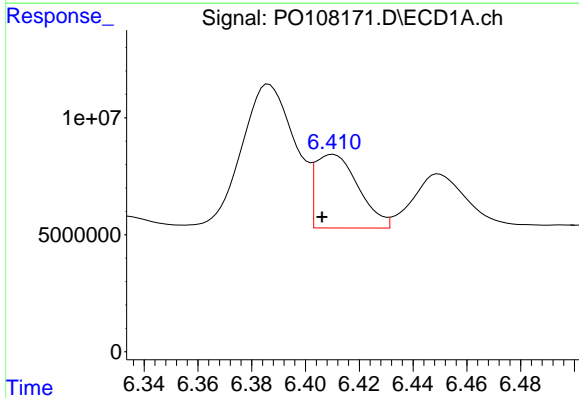
R.T.: 6.007 min
 Delta R.T.: 0.003 min
 Response: 104115436
 Conc: 405.93 ng/ml

Instrument :
 ECD_O
 ClientSampleId :
 AR1660CCC500



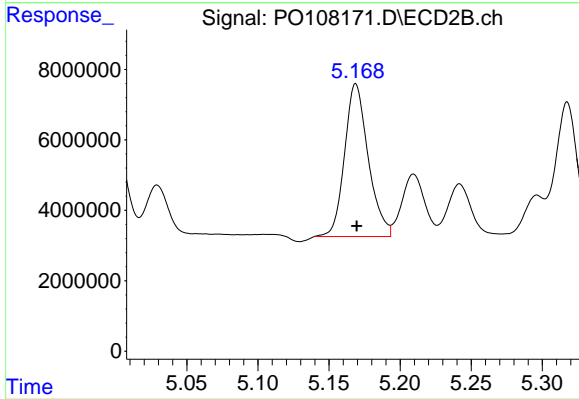
#23 AR-1248-3

R.T.: 4.997 min
 Delta R.T.: 0.000 min
 Response: 43863888
 Conc: 444.32 ng/ml



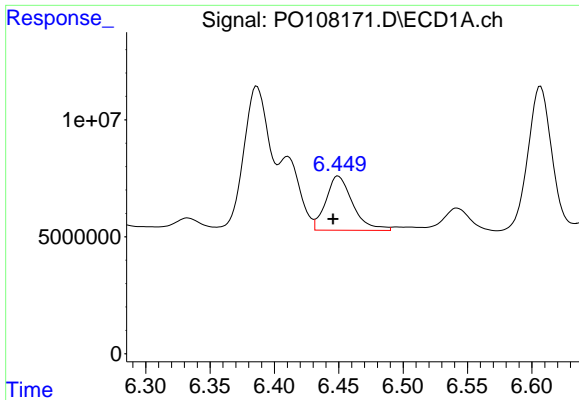
#24 AR-1248-4

R.T.: 6.410 min
 Delta R.T.: 0.004 min
 Response: 34934239
 Conc: 127.98 ng/ml



#24 AR-1248-4

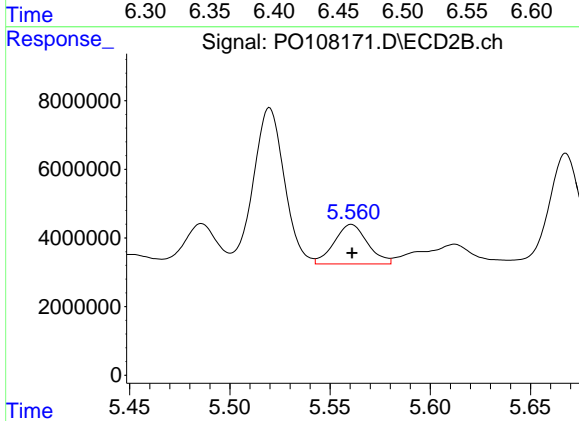
R.T.: 5.169 min
 Delta R.T.: 0.000 min
 Response: 50230609
 Conc: 417.77 ng/ml



#25 AR-1248-5

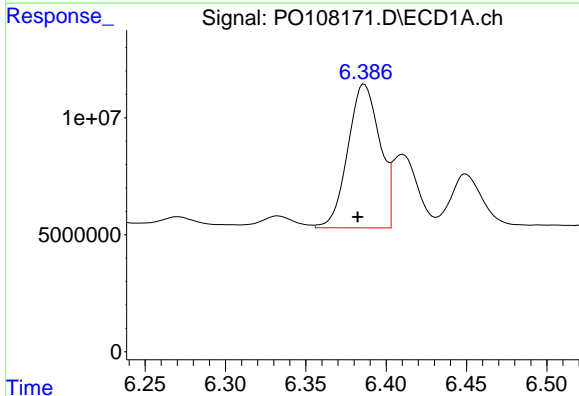
R.T.: 6.450 min
 Delta R.T.: 0.004 min
 Response: 33602359
 Conc: 124.00 ng/ml

Instrument :
 ECD_O
 ClientSampleId :
 AR1660CCC500



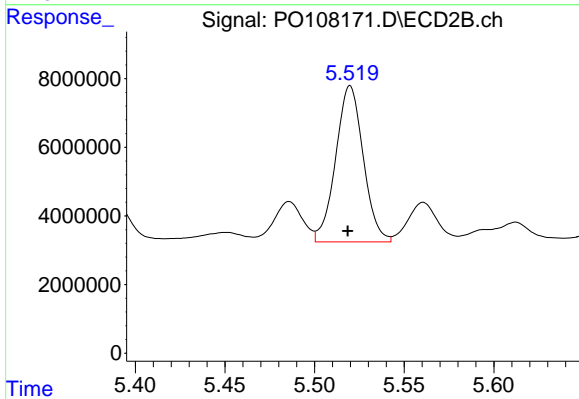
#25 AR-1248-5

R.T.: 5.561 min
 Delta R.T.: 0.000 min
 Response: 13369469
 Conc: 107.27 ng/ml



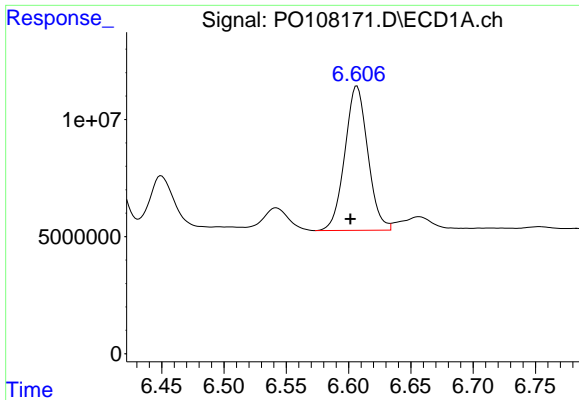
#26 AR-1254-1

R.T.: 6.386 min
 Delta R.T.: 0.004 min
 Response: 84712289
 Conc: 305.84 ng/ml



#26 AR-1254-1

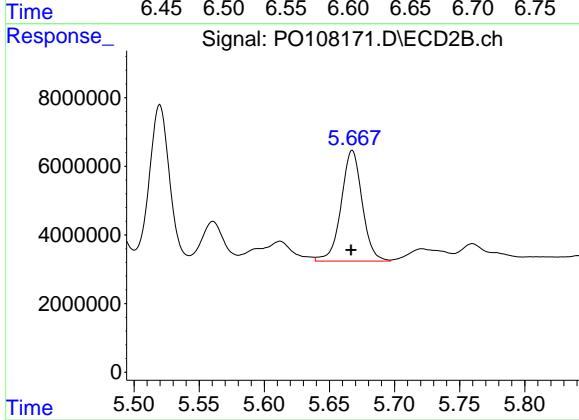
R.T.: 5.520 min
 Delta R.T.: 0.001 min
 Response: 48758297
 Conc: 275.38 ng/ml



#27 AR-1254-2

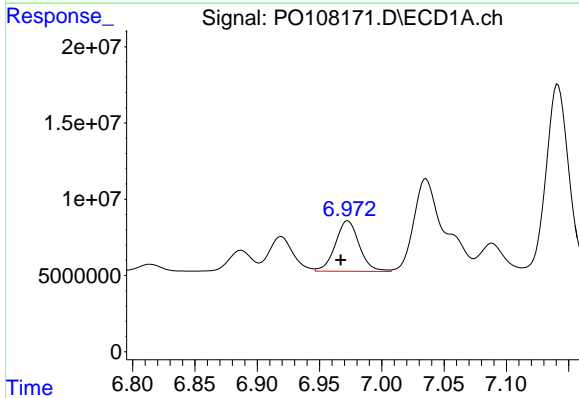
R.T.: 6.607 min
 Delta R.T.: 0.005 min
 Response: 79454657
 Conc: 194.99 ng/ml

Instrument :
 ECD_O
 ClientSampleId :
 AR1660CCC500



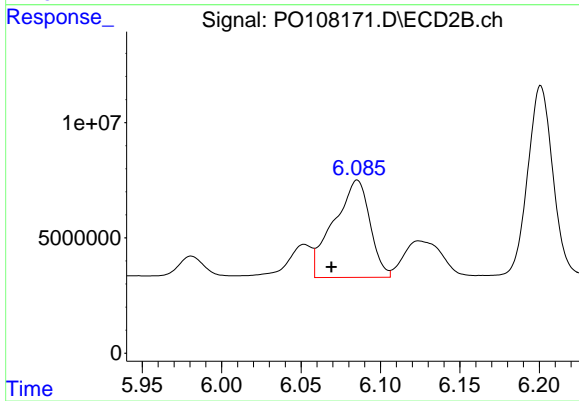
#27 AR-1254-2

R.T.: 5.668 min
 Delta R.T.: 0.001 min
 Response: 36217605
 Conc: 232.69 ng/ml



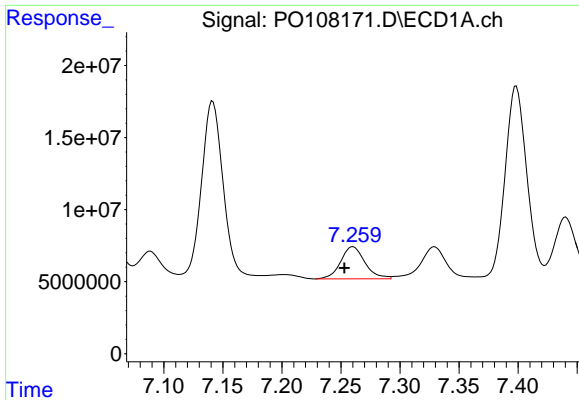
#28 AR-1254-3

R.T.: 6.973 min
 Delta R.T.: 0.006 min
 Response: 44118373
 Conc: 112.39 ng/ml



#28 AR-1254-3

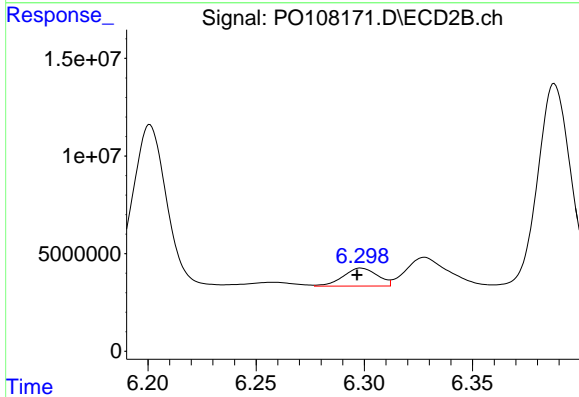
R.T.: 6.085 min
 Delta R.T.: 0.016 min
 Response: 66920151
 Conc: 258.31 ng/ml



#29 AR-1254-4

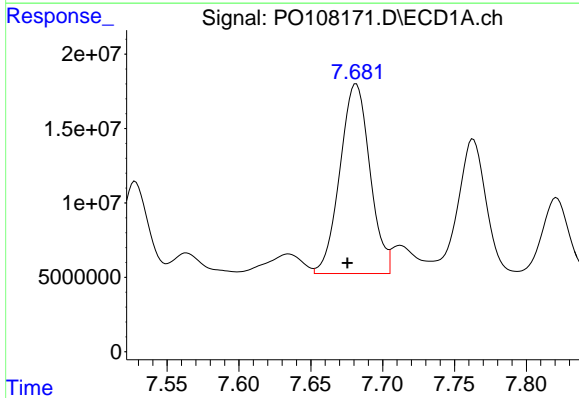
R.T.: 7.260 min
 Delta R.T.: 0.007 min
 Response: 31985680
 Conc: 114.59 ng/ml

Instrument :
 ECD_O
 ClientSampleId :
 AR1660CCC500



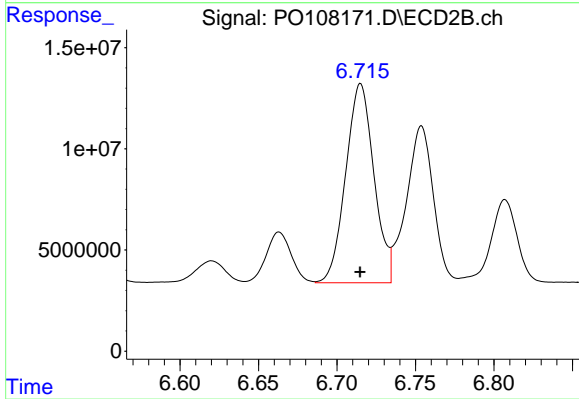
#29 AR-1254-4

R.T.: 6.298 min
 Delta R.T.: 0.002 min
 Response: 10074353
 Conc: 69.56 ng/ml



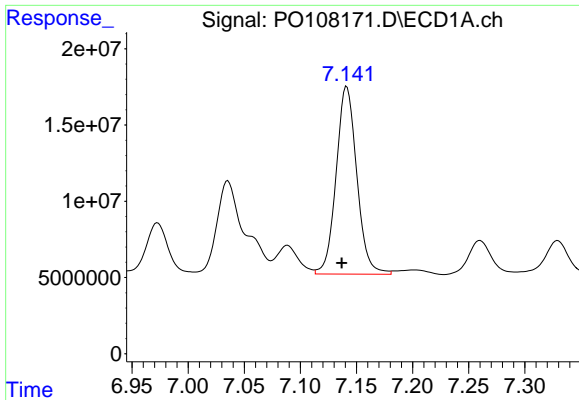
#30 AR-1254-5

R.T.: 7.682 min
 Delta R.T.: 0.006 min
 Response: 184966833
 Conc: 689.57 ng/ml



#30 AR-1254-5

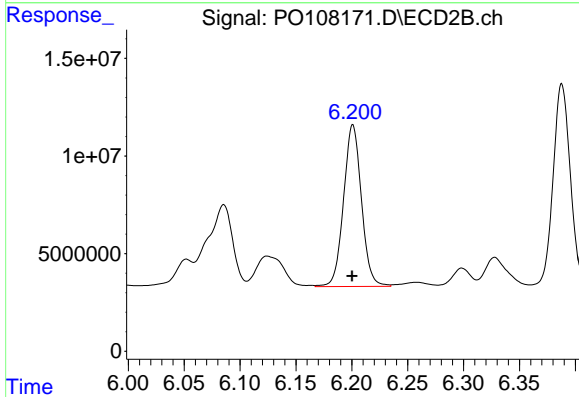
R.T.: 6.715 min
 Delta R.T.: 0.000 min
 Response: 123089646
 Conc: 537.43 ng/ml



#31 AR-1260-1

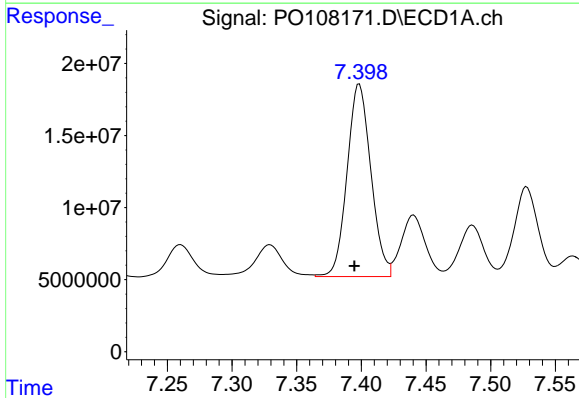
R.T.: 7.141 min
Delta R.T.: 0.005 min
Response: 158027571
Conc: 575.80 ng/ml

Instrument :
ECD_O
ClientSampleId :
AR1660CCC500



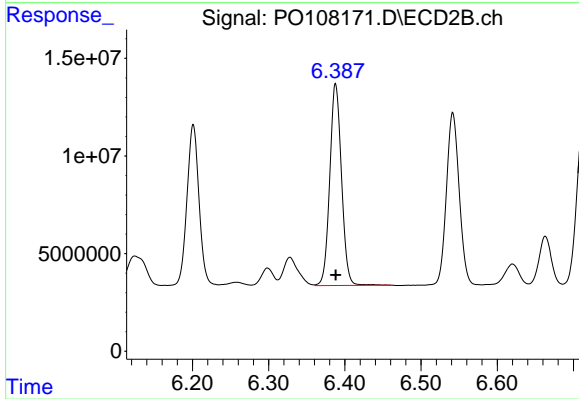
#31 AR-1260-1

R.T.: 6.201 min
Delta R.T.: 0.000 min
Response: 92376910
Conc: 570.44 ng/ml



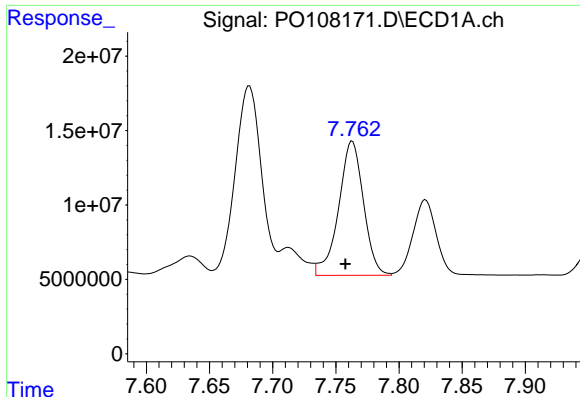
#32 AR-1260-2

R.T.: 7.398 min
Delta R.T.: 0.004 min
Response: 171114907
Conc: 604.64 ng/ml



#32 AR-1260-2

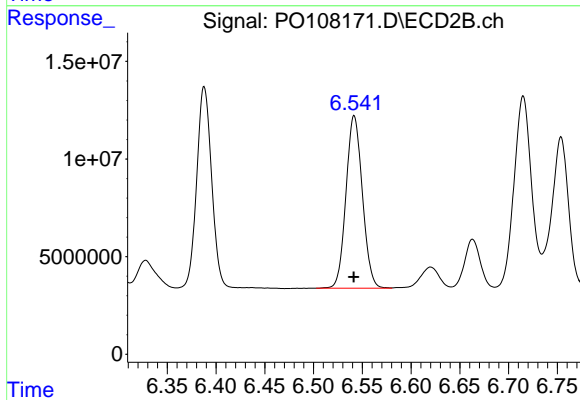
R.T.: 6.388 min
Delta R.T.: 0.000 min
Response: 110977099
Conc: 563.72 ng/ml



#33 AR-1260-3

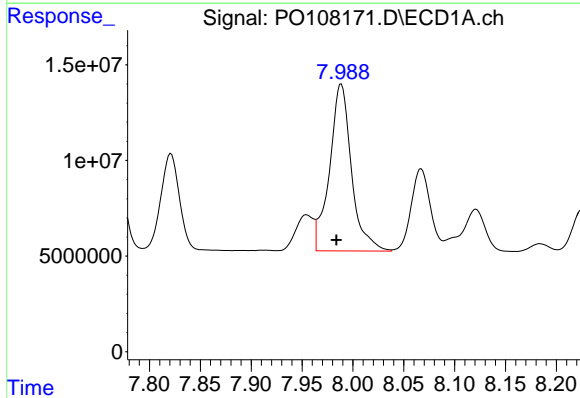
R.T.: 7.763 min
 Delta R.T.: 0.005 min
 Response: 123886773
 Conc: 576.68 ng/ml

Instrument :
 ECD_O
 ClientSampleId :
 AR1660CCC500



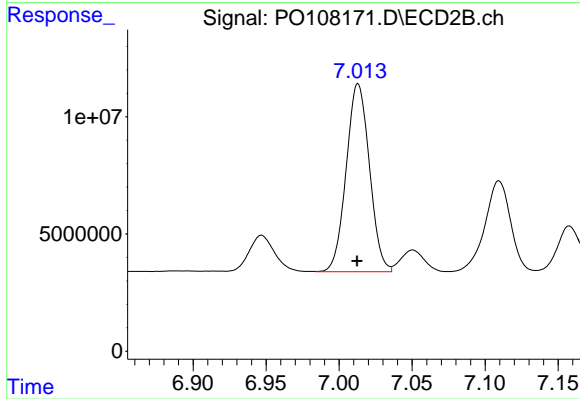
#33 AR-1260-3

R.T.: 6.542 min
 Delta R.T.: 0.000 min
 Response: 103422078
 Conc: 555.66 ng/ml



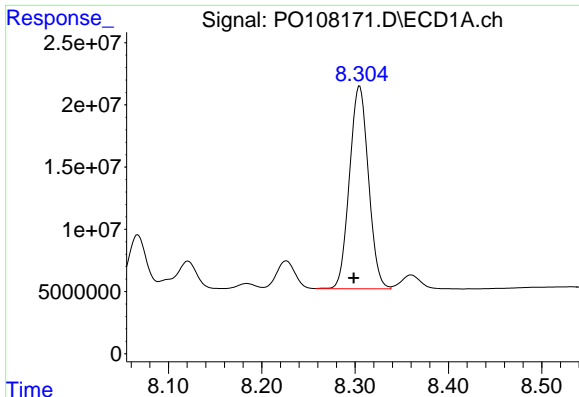
#34 AR-1260-4

R.T.: 7.989 min
 Delta R.T.: 0.005 min
 Response: 130868866
 Conc: 589.48 ng/ml



#34 AR-1260-4

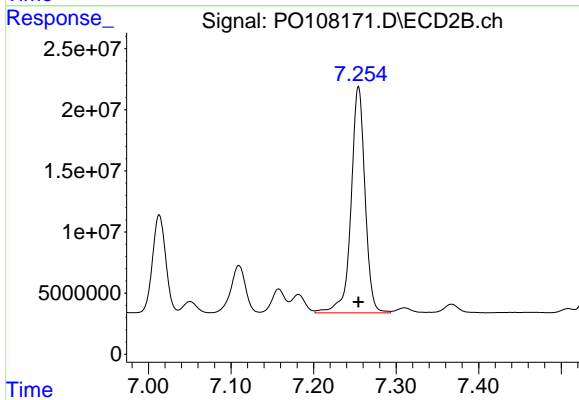
R.T.: 7.013 min
 Delta R.T.: 0.000 min
 Response: 88931131
 Conc: 555.84 ng/ml



#35 AR-1260-5

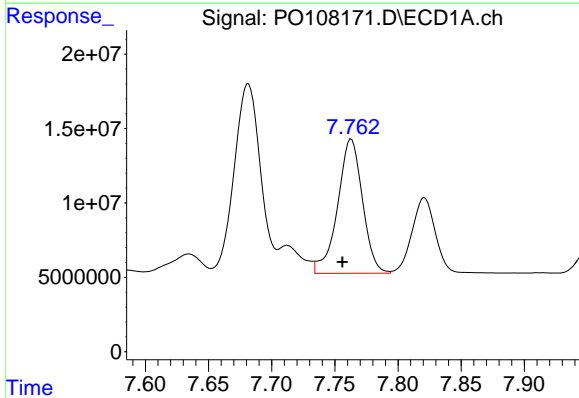
R.T.: 8.305 min
 Delta R.T.: 0.006 min
 Response: 230456066
 Conc: 604.03 ng/ml

Instrument :
 ECD_O
 ClientSampleId :
 AR1660CCC500



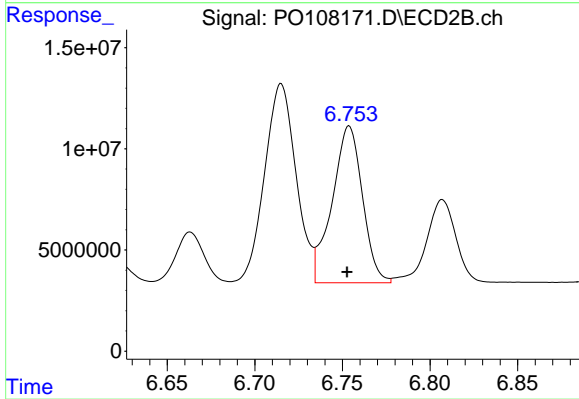
#35 AR-1260-5

R.T.: 7.254 min
 Delta R.T.: 0.000 min
 Response: 217704221
 Conc: 554.39 ng/ml



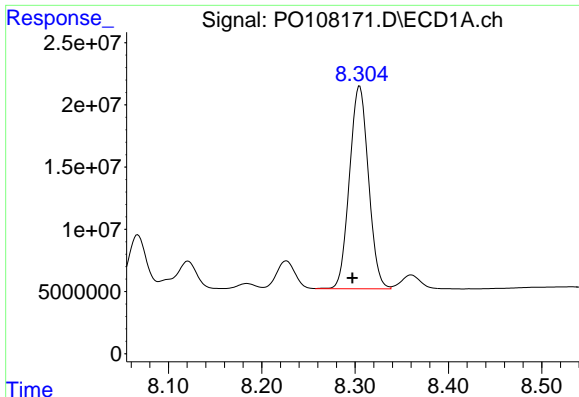
#36 AR-1262-1

R.T.: 7.763 min
 Delta R.T.: 0.007 min
 Response: 123886773
 Conc: 383.20 ng/ml



#36 AR-1262-1

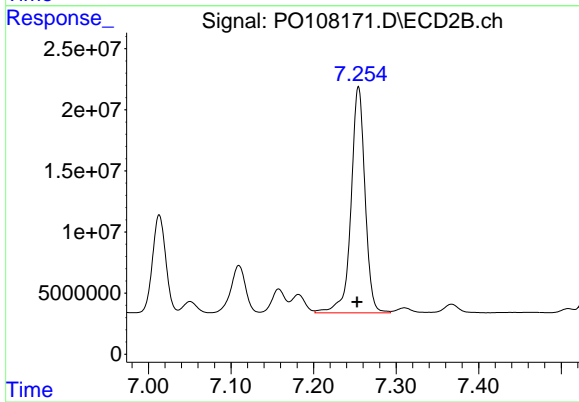
R.T.: 6.754 min
 Delta R.T.: 0.001 min
 Response: 93218876
 Conc: 409.67 ng/ml



#37 AR-1262-2

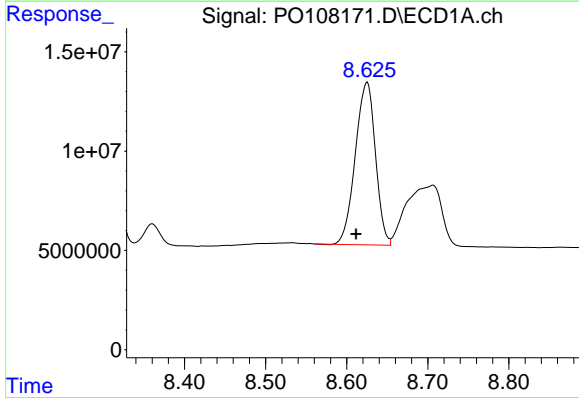
R.T.: 8.305 min
 Delta R.T.: 0.008 min
 Response: 230456066
 Conc: 512.14 ng/ml

Instrument :
 ECD_O
 ClientSampleId :
 AR1660CCC500



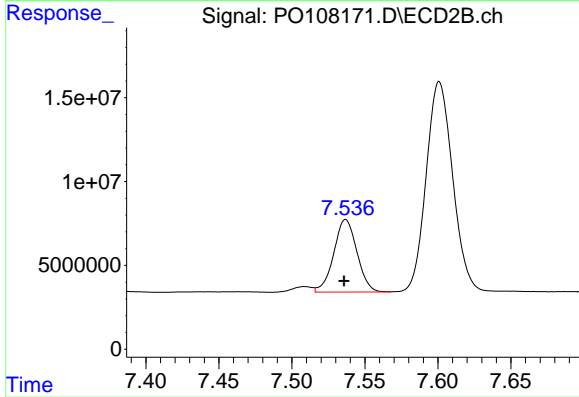
#37 AR-1262-2

R.T.: 7.254 min
 Delta R.T.: 0.002 min
 Response: 217704221
 Conc: 509.96 ng/ml



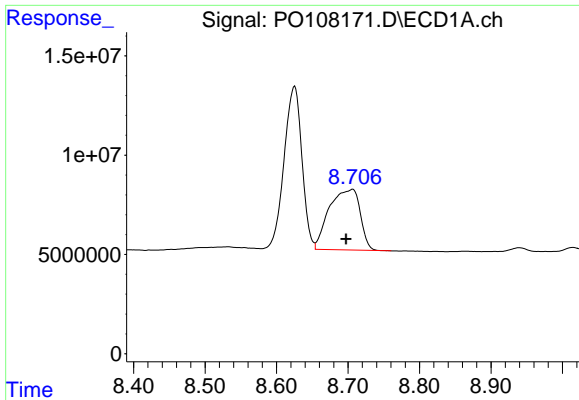
#38 AR-1262-3

R.T.: 8.625 min
 Delta R.T.: 0.014 min
 Response: 141254908
 Conc: 488.80 ng/ml



#38 AR-1262-3

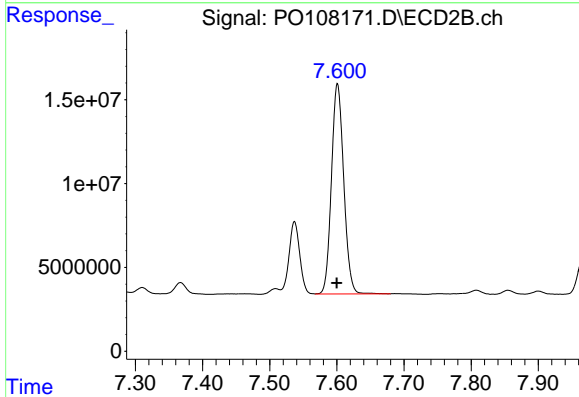
R.T.: 7.537 min
 Delta R.T.: 0.001 min
 Response: 48027073
 Conc: 290.88 ng/ml



#39 AR-1262-4

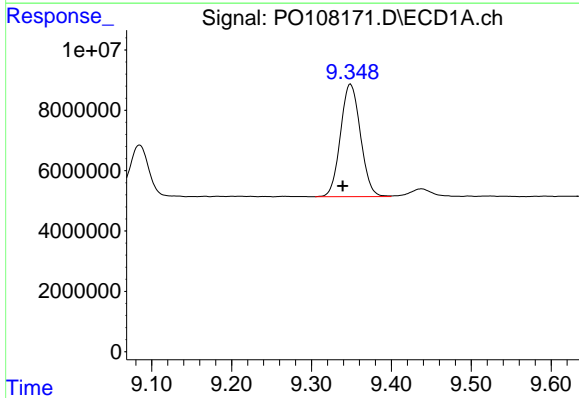
R.T.: 8.707 min
 Delta R.T.: 0.009 min
 Response: 91910196
 Conc: 411.91 ng/ml

Instrument :
 ECD_O
 ClientSampleId :
 AR1660CCC500



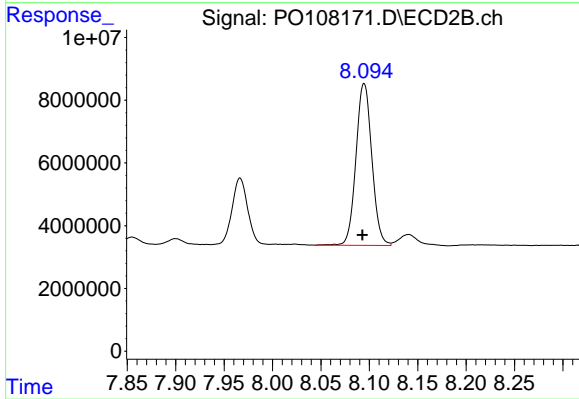
#39 AR-1262-4

R.T.: 7.601 min
 Delta R.T.: 0.001 min
 Response: 159332411
 Conc: 501.17 ng/ml



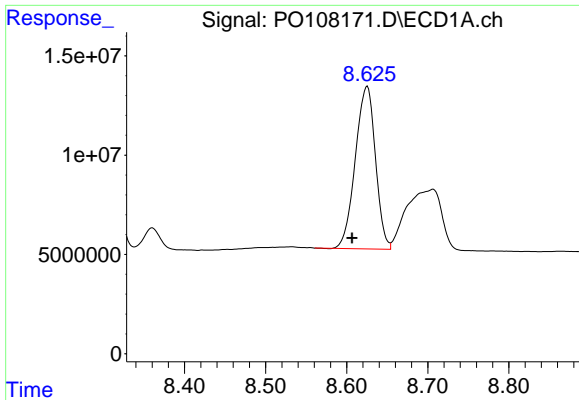
#40 AR-1262-5

R.T.: 9.349 min
 Delta R.T.: 0.010 min
 Response: 64916010
 Conc: 427.02 ng/ml



#40 AR-1262-5

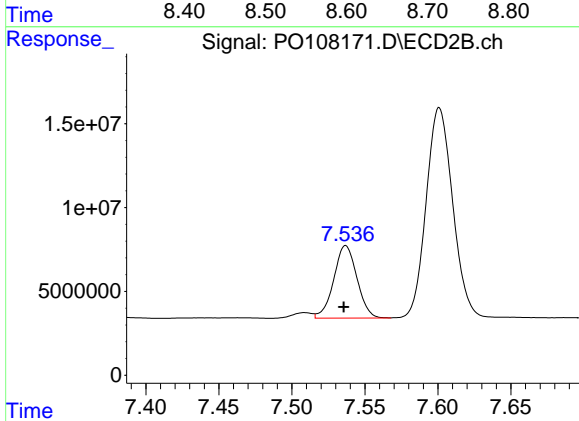
R.T.: 8.095 min
 Delta R.T.: 0.002 min
 Response: 58959545
 Conc: 398.32 ng/ml



#41 AR-1268-1

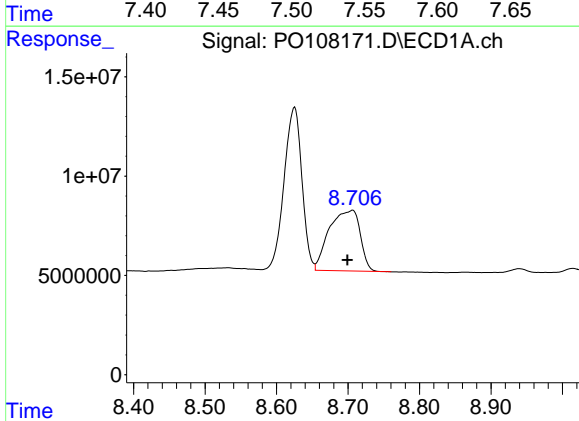
R.T.: 8.625 min
 Delta R.T.: 0.019 min
 Response: 141254908
 Conc: 285.43 ng/ml

Instrument :
 ECD_O
 ClientSampleId :
 AR1660CCC500



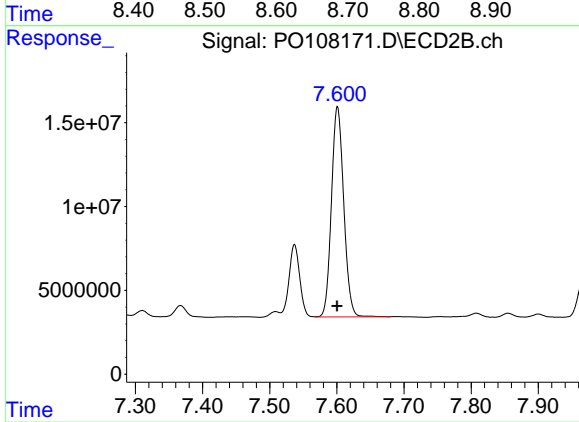
#41 AR-1268-1

R.T.: 7.537 min
 Delta R.T.: 0.001 min
 Response: 48027073
 Conc: 97.11 ng/ml



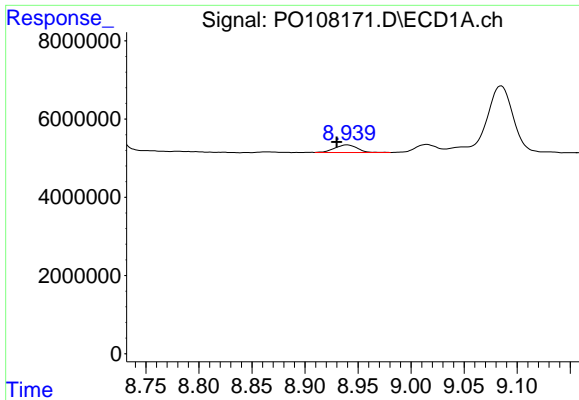
#42 AR-1268-2

R.T.: 8.707 min
 Delta R.T.: 0.007 min
 Response: 91910196
 Conc: 206.59 ng/ml



#42 AR-1268-2

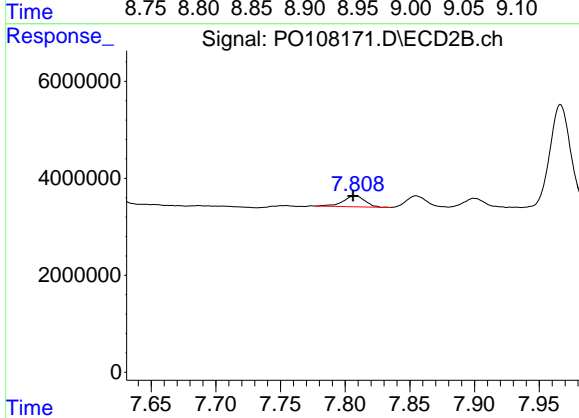
R.T.: 7.601 min
 Delta R.T.: 0.000 min
 Response: 159332411
 Conc: 345.56 ng/ml



#43 AR-1268-3

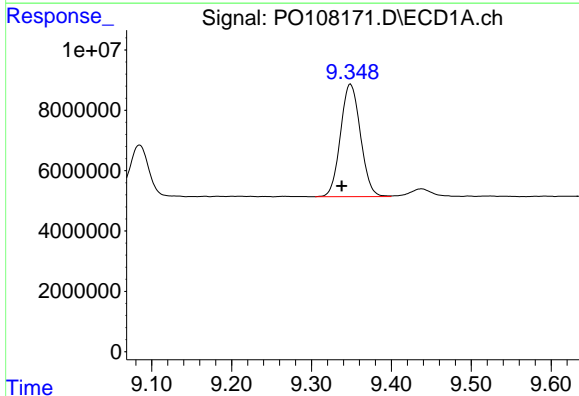
R.T.: 8.940 min
 Delta R.T.: 0.010 min
 Response: 2835489
 Conc: 7.75 ng/ml

Instrument :
 ECD_O
 ClientSampleId :
 AR1660CCC500



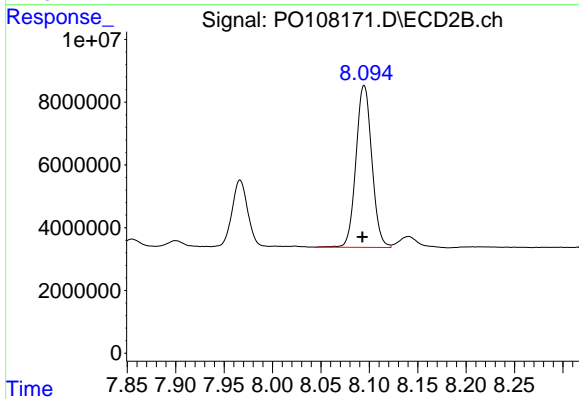
#43 AR-1268-3

R.T.: 7.808 min
 Delta R.T.: 0.002 min
 Response: 2627702
 Conc: 6.82 ng/ml



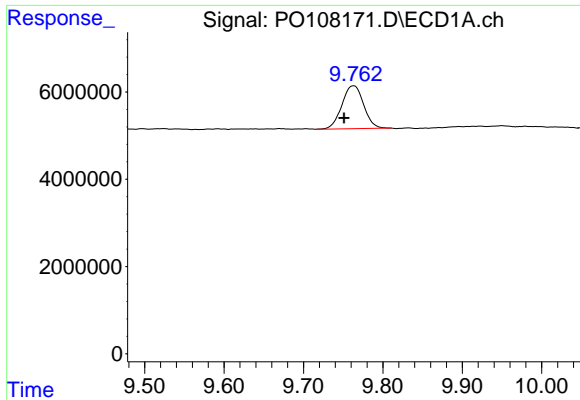
#44 AR-1268-4

R.T.: 9.349 min
 Delta R.T.: 0.011 min
 Response: 64916010
 Conc: 386.88 ng/ml



#44 AR-1268-4

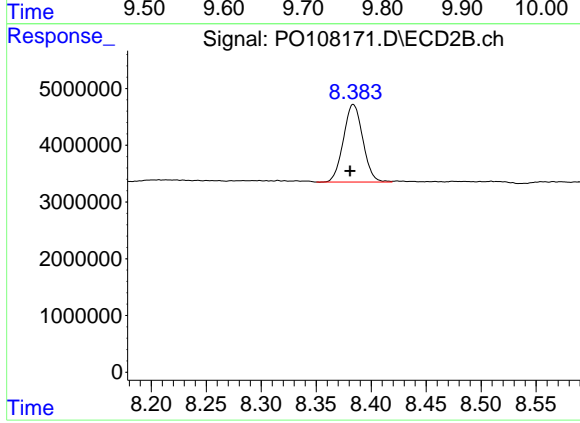
R.T.: 8.095 min
 Delta R.T.: 0.002 min
 Response: 58959545
 Conc: 356.89 ng/ml



#45 AR-1268-5

R.T.: 9.763 min
Delta R.T.: 0.012 min
Response: 18664803
Conc: 16.98 ng/ml

Instrument :
ECD_O
ClientSampleId :
AR1660CCC500



#45 AR-1268-5

R.T.: 8.384 min
Delta R.T.: 0.003 min
Response: 16768175
Conc: 12.92 ng/ml