

Data Path : Z:\pestpcbsrv\HPCHEM1\ECD_0\Data\PO112223\
 Data File : PO100009.D
 Signal(s) : Signal #1: ECD1A.ch Signal #2: ECD2B.ch
 Acq On : 22 Nov 2023 13:46
 Operator : YP/AJ
 Sample : 05516-01
 Misc :
 ALS Vial : 9 Sample Multiplier: 1

Instrument :
 ECD_0
ClientSampleId :
 72-11930

Manual Integrations
APPROVED
 Reviewed By :Yogesh Patel 11/24/2023
 Supervised By :Ankita Jodhani 11/27/2023

Integration File signal 1: autoint1.e
 Integration File signal 2: autoint2.e
 Quant Time: Nov 22 22:52:03 2023
 Quant Method : Z:\pestpcbsrv\HPCHEM1\ECD_0\methods\PO112123.M
 Quant Title : GC EXTRACTABLES
 QLast Update : Tue Nov 21 15:58:40 2023
 Response via : Initial Calibration
 Integrator: ChemStation

Volume Inj. : 2 µl
 Signal #1 Phase : ZB-MR1 Signal #2 Phase: ZB-MR2
 Signal #1 Info : 30Mx0.32mmx 0.50µ Signal #2 Info : 30M x 0.32mm x 0.25µm

Compound	RT#1	RT#2	Resp#1	Resp#2	ng/ml	ng/ml

System Monitoring Compounds						
1) SA Tetrachlo...	4.482	3.706	35475704	27946228	20.785m	18.632m
2) SA Decachlor...	10.372	8.807	13295527	18648601	18.305	16.665

Target Compounds

(f)=RT Delta > 1/2 Window (#)=Amounts differ by > 25% (m)=manual int.

Data Path : Z:\pestpcbsrv\HPCHEM1\ECD_O\Data\PO112223\
 Data File : PO100009.D
 Signal(s) : Signal #1: ECD1A.ch Signal #2: ECD2B.ch
 Acq On : 22 Nov 2023 13:46
 Operator : YP/AJ
 Sample : 05516-01
 Misc :
 ALS Vial : 9 Sample Multiplier: 1

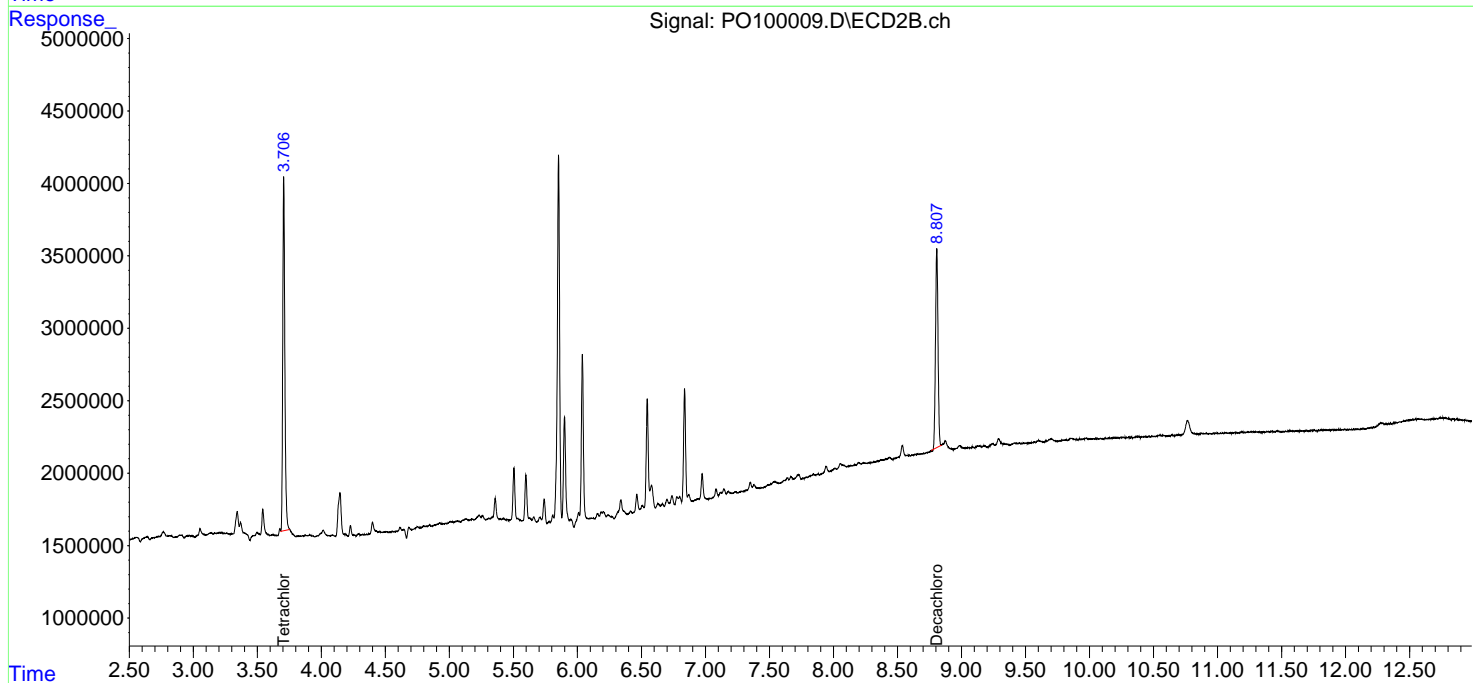
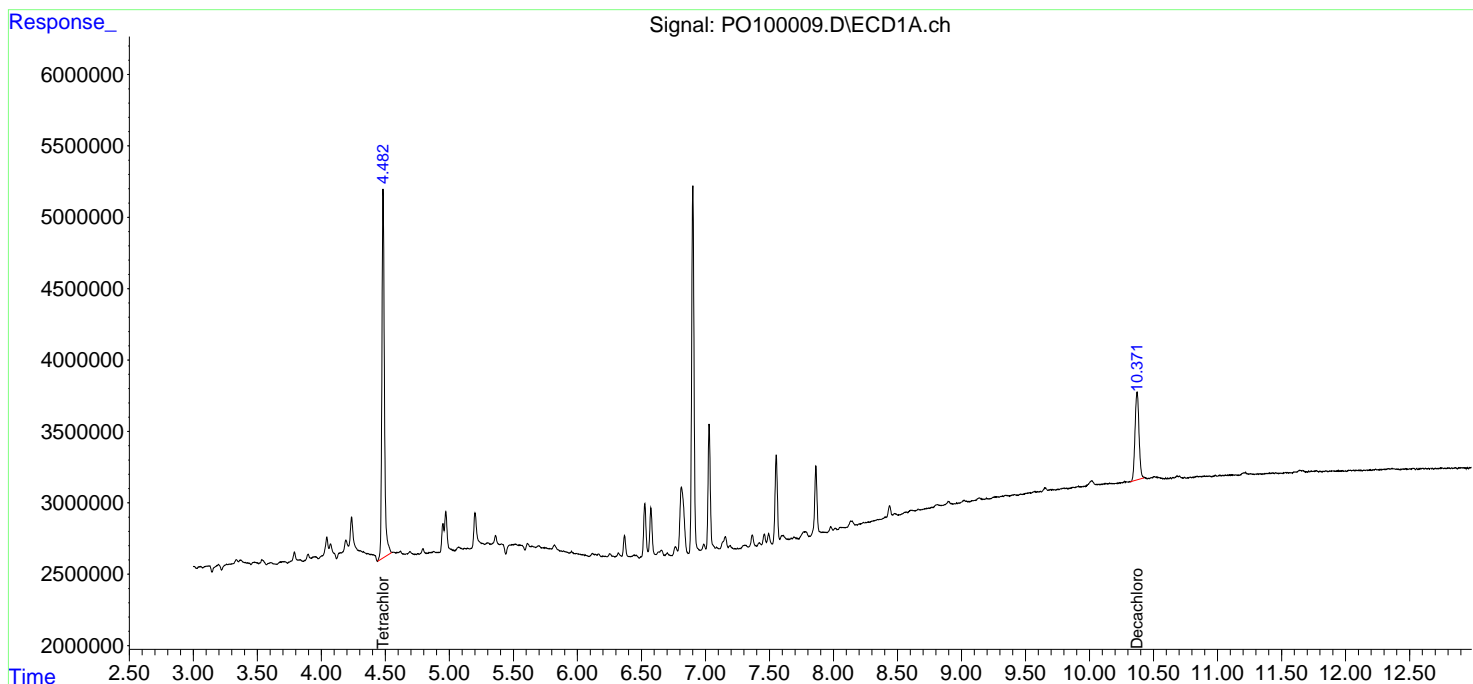
Instrument :
 ECD_O
 ClientSampleId :
 72-11930

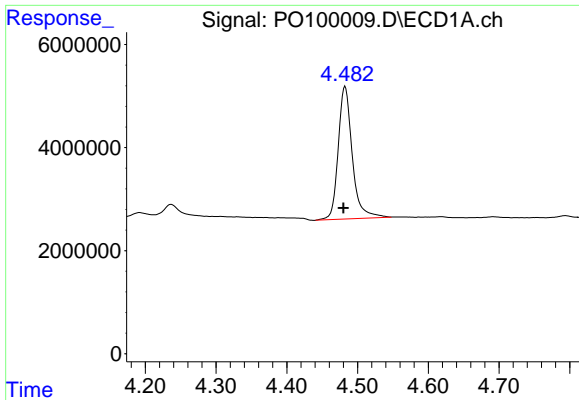
Manual Integrations
APPROVED

Reviewed By :Yogesh Patel 11/24/2023
 Supervised By :Ankita Jodhani 11/27/2023

Integration File signal 1: autoint1.e
 Integration File signal 2: autoint2.e
 Quant Time: Nov 22 22:52:03 2023
 Quant Method : Z:\pestpcbsrv\HPCHEM1\ECD_O\methods\PO112123.M
 Quant Title : GC EXTRACTABLES
 QLast Update : Tue Nov 21 15:58:40 2023
 Response via : Initial Calibration
 Integrator: ChemStation

Volume Inj. : 2 µl
 Signal #1 Phase : ZB-MR1 Signal #2 Phase: ZB-MR2
 Signal #1 Info : 30Mx0.32mmx 0.50µ Signal #2 Info : 30M x 0.32mm x 0.25µm





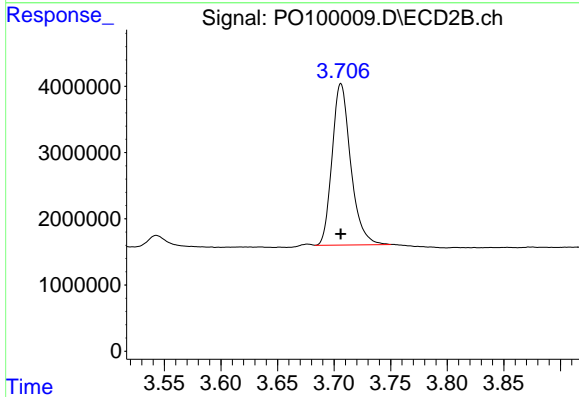
#1 Tetrachloro-m-xylene

R.T.: 4.482 min
 Delta R.T.: 0.002 min
 Response: 35475704
 Conc: 20.78 ng/ml

Instrument :
 ECD_O
 ClientSampleId :
 72-11930

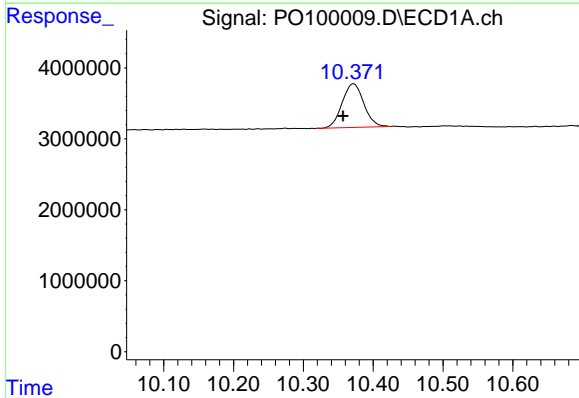
Manual Integrations
 APPROVED

Reviewed By :Yogesh Patel 11/24/2023
 Supervised By :Ankita Jodhani 11/27/2023



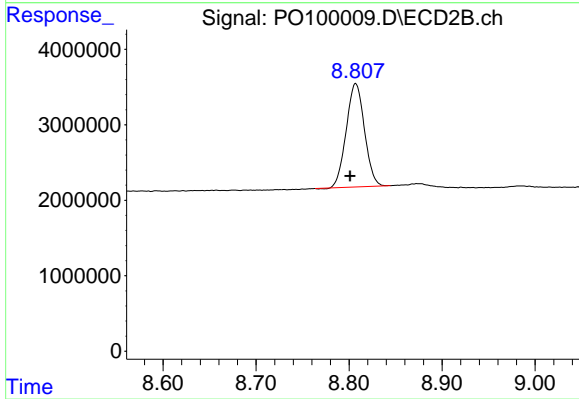
#1 Tetrachloro-m-xylene

R.T.: 3.706 min
 Delta R.T.: 0.000 min
 Response: 27946228
 Conc: 18.63 ng/ml m



#2 Decachlorobiphenyl

R.T.: 10.372 min
 Delta R.T.: 0.015 min
 Response: 13295527
 Conc: 18.30 ng/ml



#2 Decachlorobiphenyl

R.T.: 8.807 min
 Delta R.T.: 0.006 min
 Response: 18648601
 Conc: 16.67 ng/ml