

Data Path : Z:\pestpcbsrv\HPCHEM1\ECD_0\Data\PO112224\
 Data File : PO108189.D
 Signal(s) : Signal #1: ECD1A.ch Signal #2: ECD2B.ch
 Acq On : 22 Nov 2024 15:57
 Operator : YP/AJ
 Sample : AR1660CCC500
 Misc :
 ALS Vial : 3 Sample Multiplier: 1

Instrument :
 ECD_0
 ClientSampleId :
 AR1660CCC500

Integration File signal 1: autoint1.e
 Integration File signal 2: autoint2.e
 Quant Time: Nov 22 16:52:19 2024
 Quant Method : Z:\pestpcbsrv\HPCHEM1\ECD_0\methods\PO111824.M
 Quant Title : GC EXTRACTABLES
 QLast Update : Tue Nov 19 03:13:56 2024
 Response via : Initial Calibration
 Integrator: ChemStation

Volume Inj. : 2 µl
 Signal #1 Phase : ZB-MR1 Signal #2 Phase: ZB-MR2
 Signal #1 Info : 30Mx0.32mmx 0.50µ Signal #2 Info : 30M x 0.32mm x 0.25µm

Compound	RT#1	RT#2	Resp#1	Resp#2	ng/ml	ng/ml

System Monitoring Compounds						
1) SA Tetrachlo...	4.372	3.638	436.8E6	168.8E6	50.175	49.781
2) SA Decachlor...	10.103	8.639	155.5E6	140.8E6	50.924	41.389
Target Compounds						
3) L1 AR-1016-1	5.528	4.720	131.8E6	54295746	490.075	496.878
4) L1 AR-1016-2	5.550	4.738	188.0E6	76423572	484.978	499.819
5) L1 AR-1016-3	5.613	4.915	120.6E6	41242976	482.481	501.958
6) L1 AR-1016-4	5.710	4.957	96874235	31763923	496.106	498.862
7) L1 AR-1016-5	6.007	5.170	91455694	42911296	493.208	494.959
31) L7 AR-1260-1	7.141	6.202	128.2E6	77176593	467.070	476.573
32) L7 AR-1260-2	7.400	6.390	140.3E6	92228058	495.795	468.486
33) L7 AR-1260-3	7.763	6.543	103.2E6	85453906	480.546	459.121
34) L7 AR-1260-4	7.989	7.015	108.7E6	72386310	489.526	452.430
35) L7 AR-1260-5	8.305	7.256	189.9E6	175.6E6	497.762	447.213

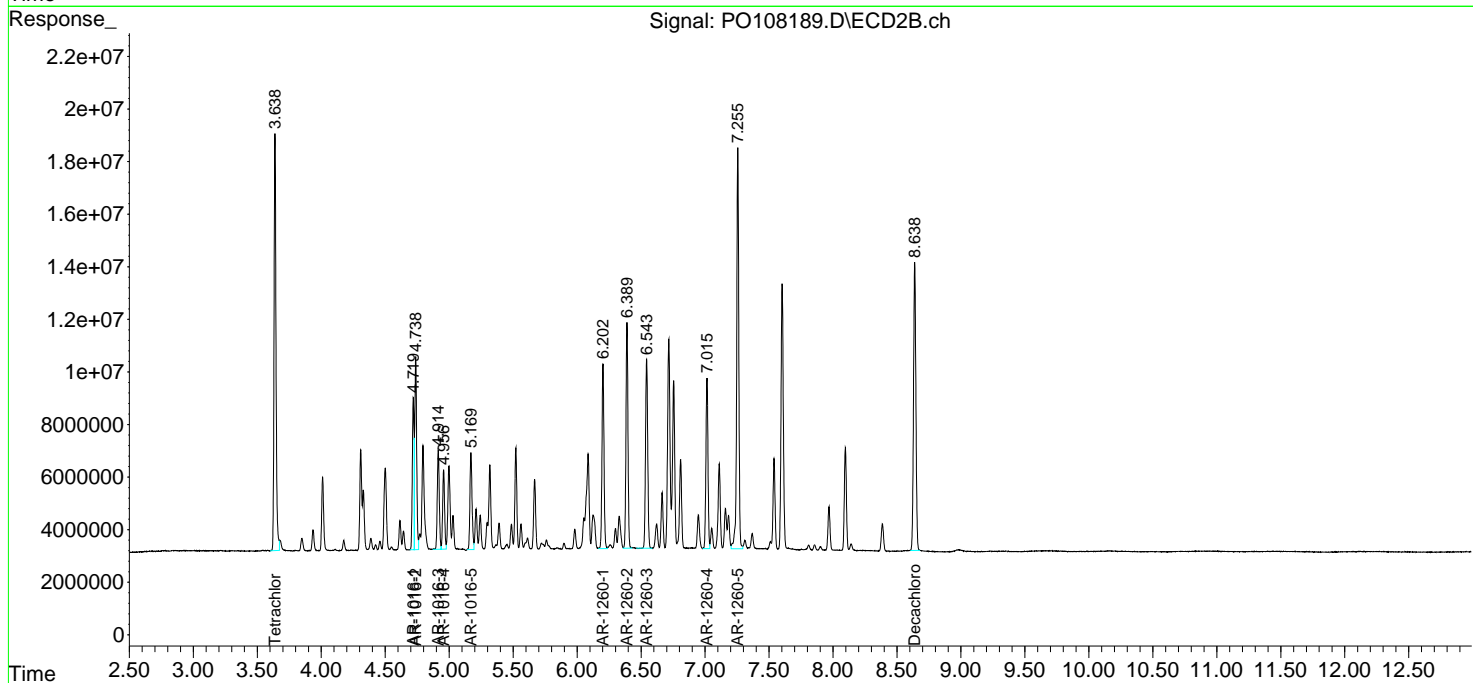
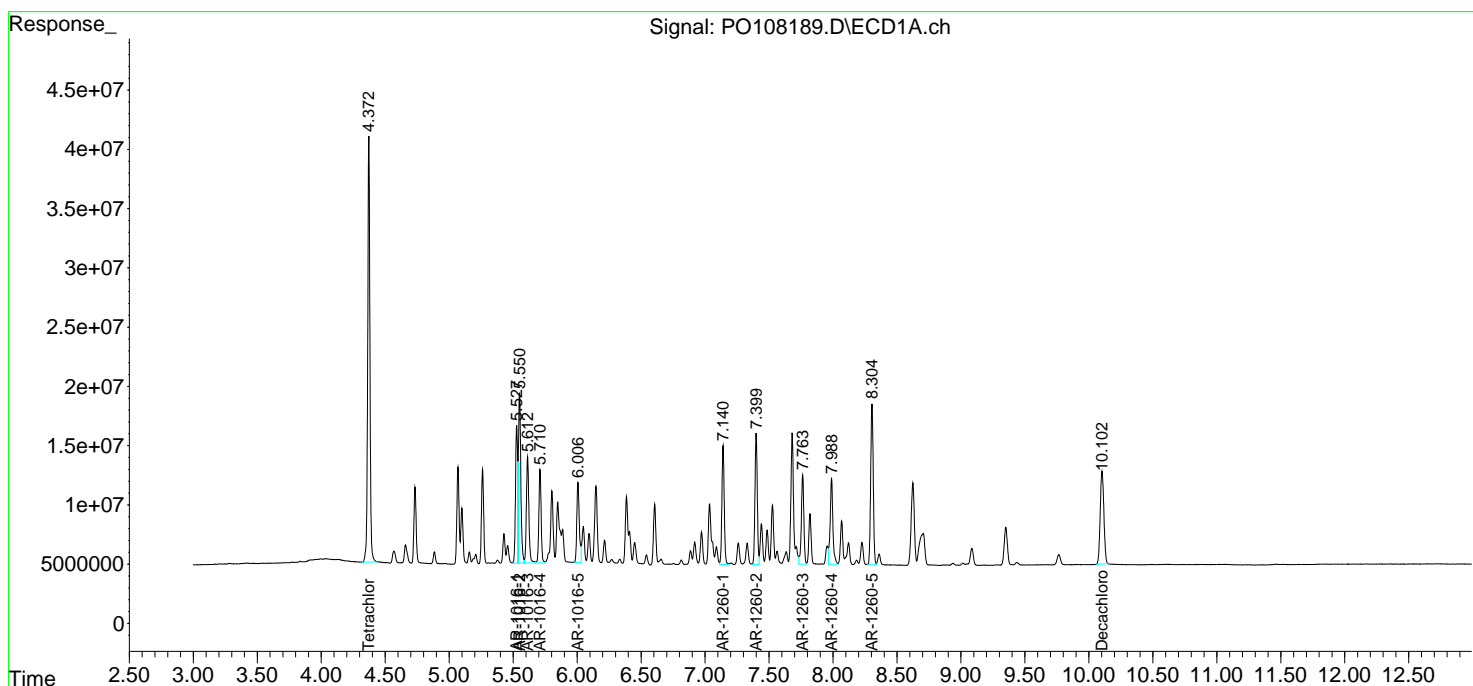
(f)=RT Delta > 1/2 Window (#)=Amounts differ by > 25% (m)=manual int.

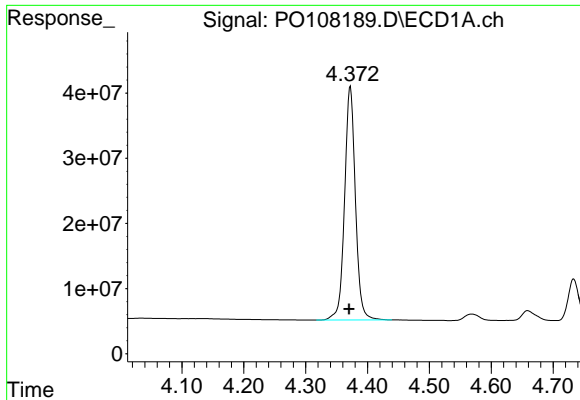
Data Path : Z:\pestpcbsrv\HPCHEM1\ECD_O\Data\PO112224\
 Data File : PO108189.D
 Signal(s) : Signal #1: ECD1A.ch Signal #2: ECD2B.ch
 Acq On : 22 Nov 2024 15:57
 Operator : YP/AJ
 Sample : AR1660CCC500
 Misc :
 ALS Vial : 3 Sample Multiplier: 1

Instrument :
 ECD_O
 ClientSampleId :
 AR1660CCC500

Integration File signal 1: autoint1.e
 Integration File signal 2: autoint2.e
 Quant Time: Nov 22 16:52:19 2024
 Quant Method : Z:\pestpcbsrv\HPCHEM1\ECD_O\methods\PO111824.M
 Quant Title : GC EXTRACTABLES
 QLast Update : Tue Nov 19 03:13:56 2024
 Response via : Initial Calibration
 Integrator: ChemStation

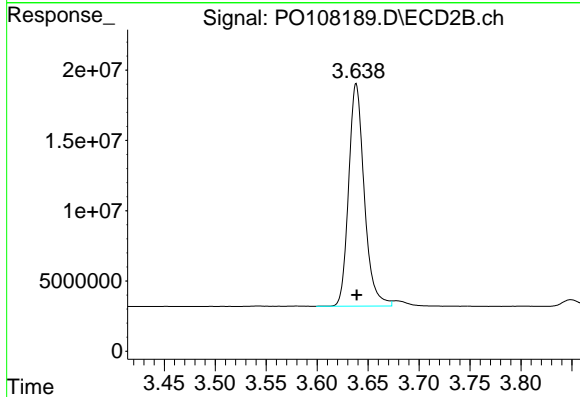
Volume Inj. : 2 µl
 Signal #1 Phase : ZB-MR1 Signal #2 Phase: ZB-MR2
 Signal #1 Info : 30Mx0.32mmx 0.50µ Signal #2 Info : 30M x 0.32mm x 0.25µm



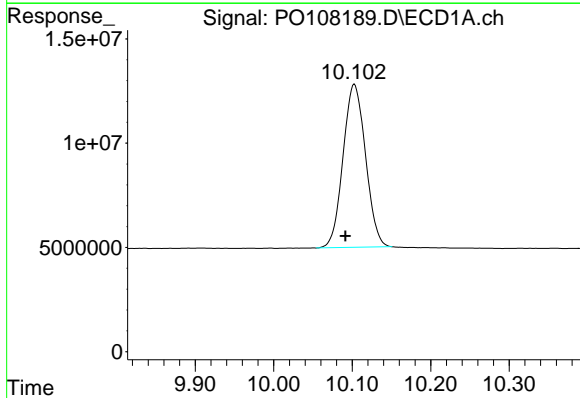


#1 Tetrachloro-m-xylene
 R.T.: 4.372 min
 Delta R.T.: 0.002 min
 Response: 436823993
 Conc: 50.17 ng/ml

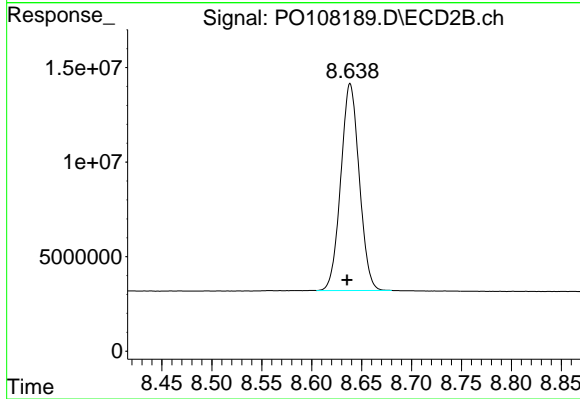
Instrument :
 ECD_O
 ClientSampleId :
 AR1660CCC500



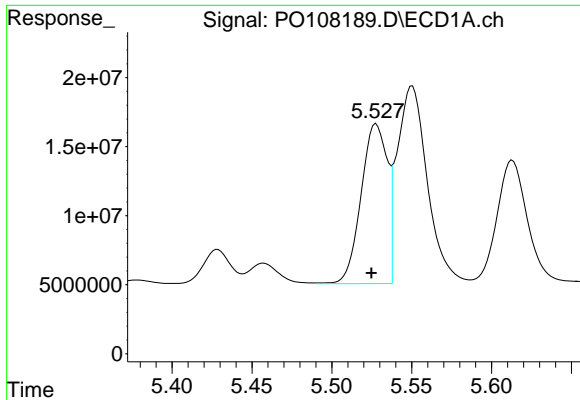
#1 Tetrachloro-m-xylene
 R.T.: 3.638 min
 Delta R.T.: 0.000 min
 Response: 168778168
 Conc: 49.78 ng/ml



#2 Decachlorobiphenyl
 R.T.: 10.103 min
 Delta R.T.: 0.011 min
 Response: 155532585
 Conc: 50.92 ng/ml



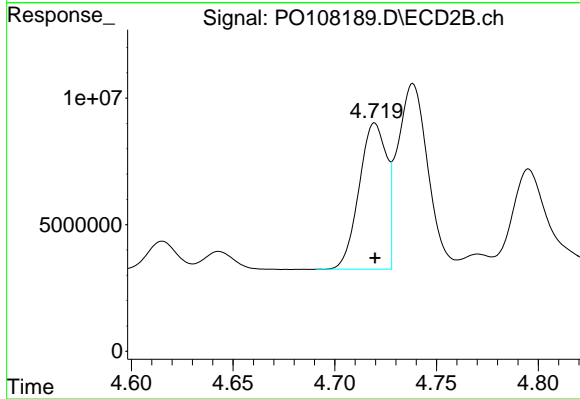
#2 Decachlorobiphenyl
 R.T.: 8.639 min
 Delta R.T.: 0.003 min
 Response: 140792702
 Conc: 41.39 ng/ml



#3 AR-1016-1

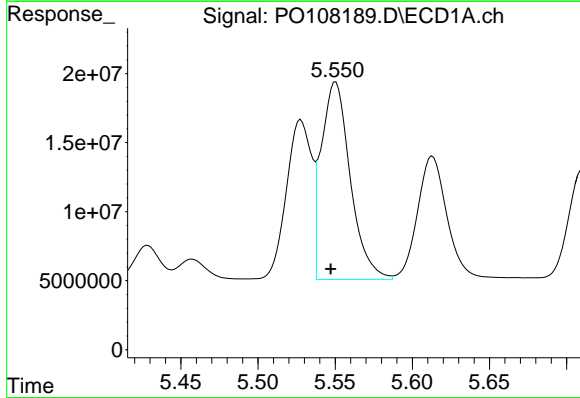
R.T.: 5.528 min
 Delta R.T.: 0.003 min
 Response: 131794632
 Conc: 490.08 ng/ml

Instrument :
 ECD_O
 ClientSampleId :
 AR1660CCC500



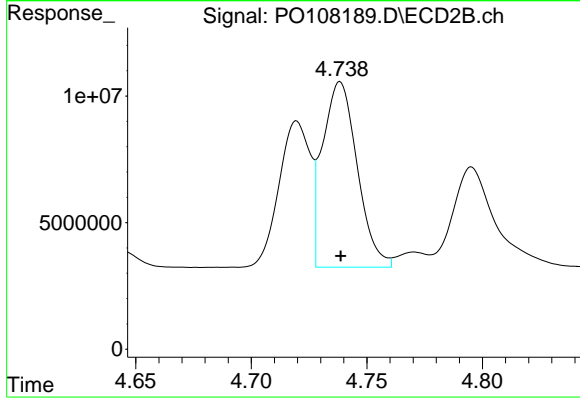
#3 AR-1016-1

R.T.: 4.720 min
 Delta R.T.: 0.000 min
 Response: 54295746
 Conc: 496.88 ng/ml



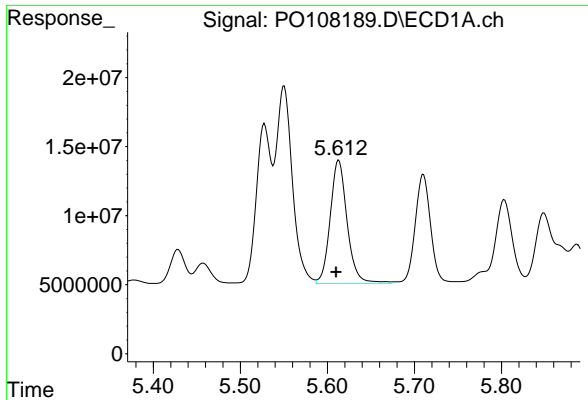
#4 AR-1016-2

R.T.: 5.550 min
 Delta R.T.: 0.003 min
 Response: 188013054
 Conc: 484.98 ng/ml



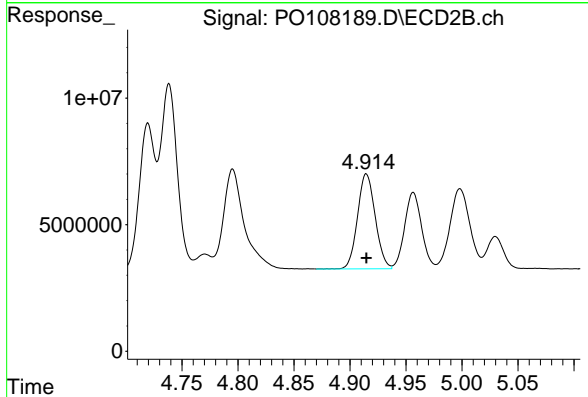
#4 AR-1016-2

R.T.: 4.738 min
 Delta R.T.: 0.000 min
 Response: 76423572
 Conc: 499.82 ng/ml

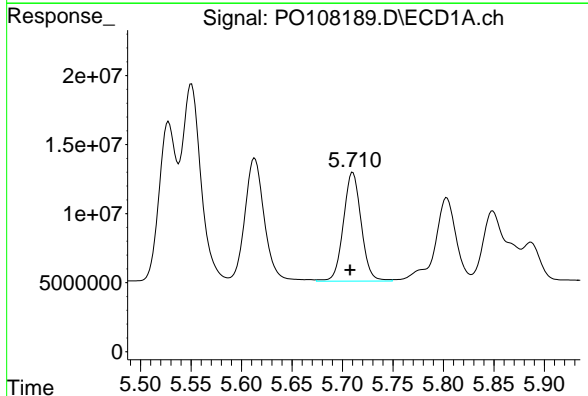


#5 AR-1016-3
 R.T.: 5.613 min
 Delta R.T.: 0.003 min
 Response: 120578418
 Conc: 482.48 ng/ml

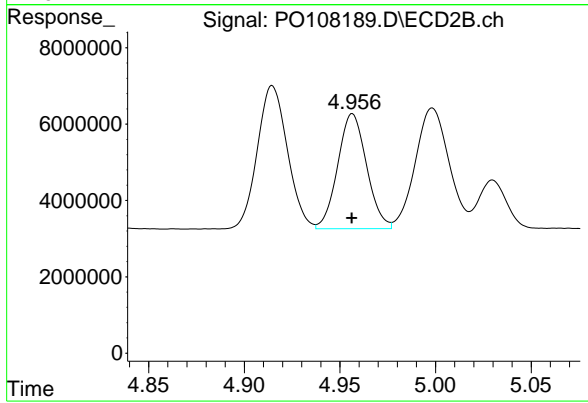
Instrument :
 ECD_O
 ClientSampleId :
 AR1660CCC500



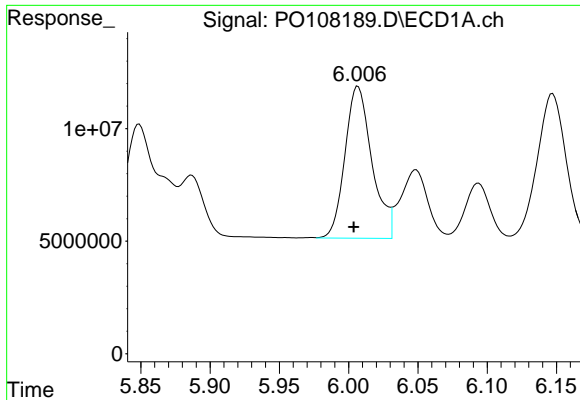
#5 AR-1016-3
 R.T.: 4.915 min
 Delta R.T.: 0.000 min
 Response: 41242976
 Conc: 501.96 ng/ml



#6 AR-1016-4
 R.T.: 5.710 min
 Delta R.T.: 0.003 min
 Response: 96874235
 Conc: 496.11 ng/ml



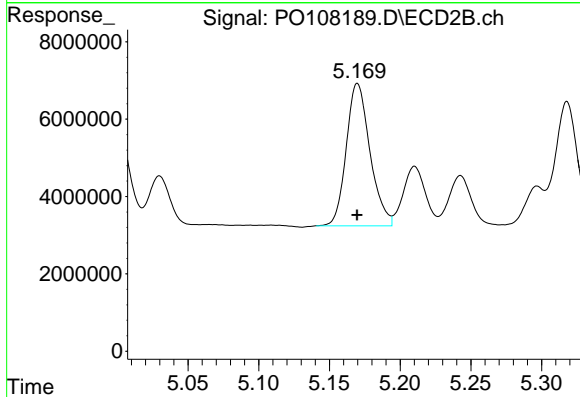
#6 AR-1016-4
 R.T.: 4.957 min
 Delta R.T.: 0.000 min
 Response: 31763923
 Conc: 498.86 ng/ml



#7 AR-1016-5

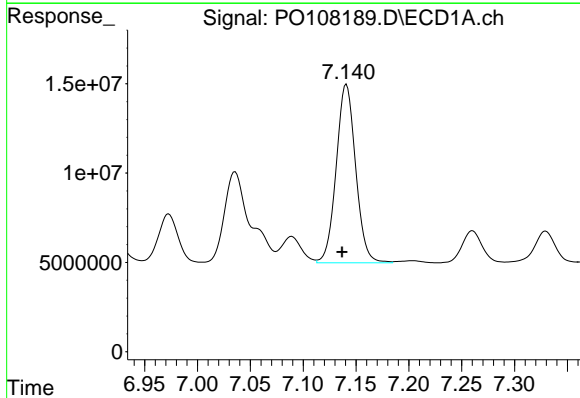
R.T.: 6.007 min
 Delta R.T.: 0.003 min
 Response: 91455694
 Conc: 493.21 ng/ml

Instrument :
 ECD_O
 ClientSampleId :
 AR1660CCC500



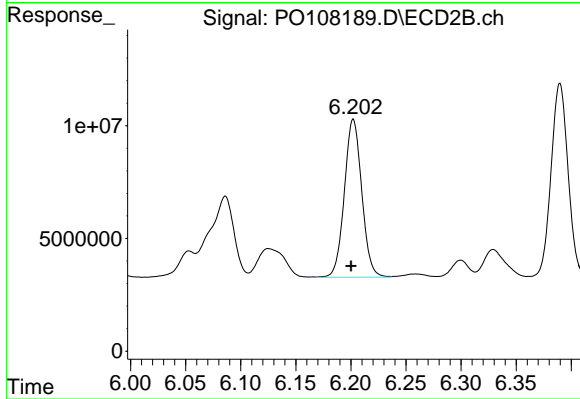
#7 AR-1016-5

R.T.: 5.170 min
 Delta R.T.: 0.000 min
 Response: 42911296
 Conc: 494.96 ng/ml



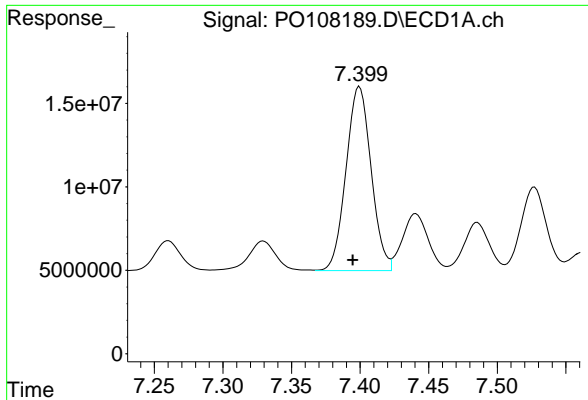
#31 AR-1260-1

R.T.: 7.141 min
 Delta R.T.: 0.004 min
 Response: 128186500
 Conc: 467.07 ng/ml



#31 AR-1260-1

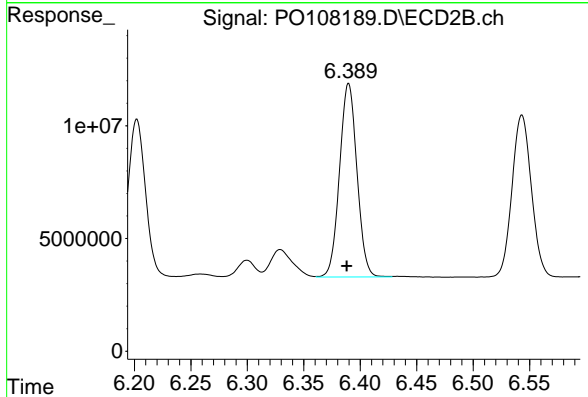
R.T.: 6.202 min
 Delta R.T.: 0.002 min
 Response: 77176593
 Conc: 476.57 ng/ml



#32 AR-1260-2

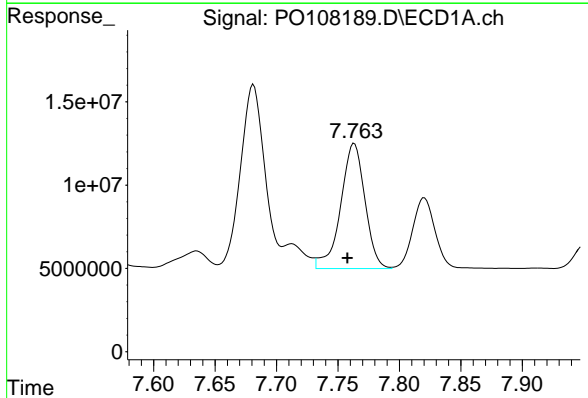
R.T.: 7.400 min
 Delta R.T.: 0.005 min
 Response: 140311523
 Conc: 495.80 ng/ml

Instrument :
 ECD_O
 ClientSampleId :
 AR1660CCC500



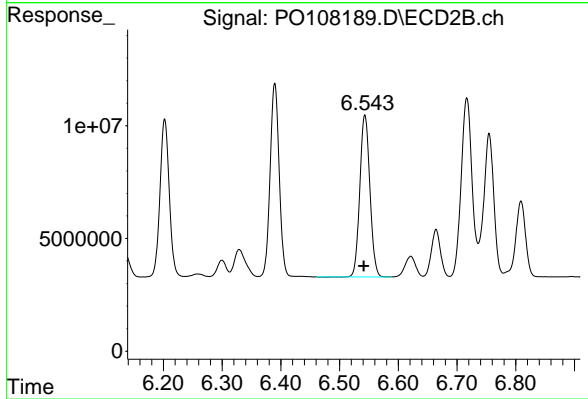
#32 AR-1260-2

R.T.: 6.390 min
 Delta R.T.: 0.002 min
 Response: 92228058
 Conc: 468.49 ng/ml



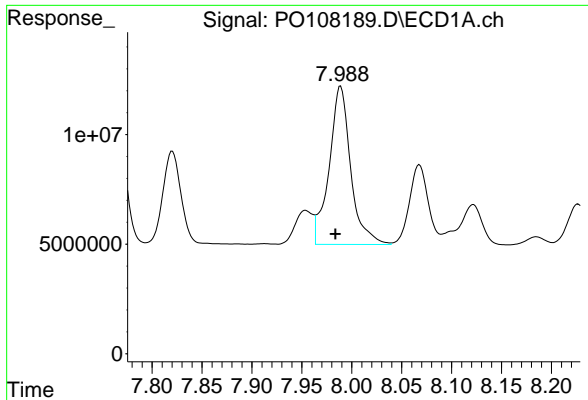
#33 AR-1260-3

R.T.: 7.763 min
 Delta R.T.: 0.006 min
 Response: 103235184
 Conc: 480.55 ng/ml



#33 AR-1260-3

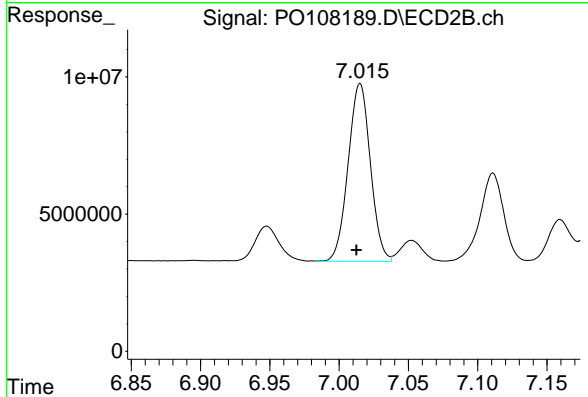
R.T.: 6.543 min
 Delta R.T.: 0.002 min
 Response: 85453906
 Conc: 459.12 ng/ml



#34 AR-1260-4

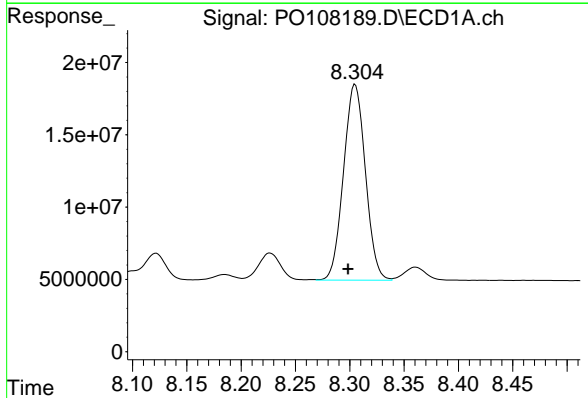
R.T.: 7.989 min
Delta R.T.: 0.005 min
Response: 108679007
Conc: 489.53 ng/ml

Instrument :
ECD_O
ClientSampleId :
AR1660CCC500



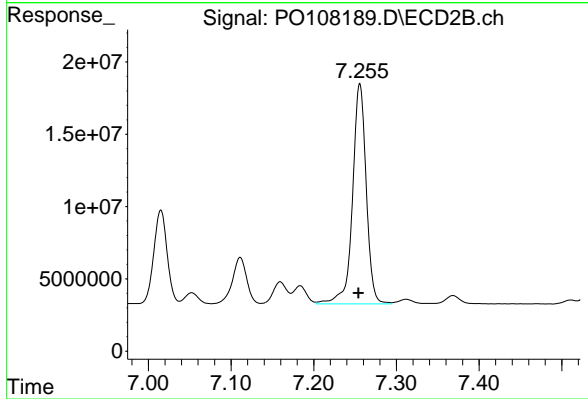
#34 AR-1260-4

R.T.: 7.015 min
Delta R.T.: 0.003 min
Response: 72386310
Conc: 452.43 ng/ml



#35 AR-1260-5

R.T.: 8.305 min
Delta R.T.: 0.006 min
Response: 189912618
Conc: 497.76 ng/ml



#35 AR-1260-5

R.T.: 7.256 min
Delta R.T.: 0.002 min
Response: 175617355
Conc: 447.21 ng/ml