

Data Path : Z:\pestpcbsrv\HPCHEM1\ECD_0\Data\PO112224\
 Data File : PO108213.D
 Signal(s) : Signal #1: ECD1A.ch Signal #2: ECD2B.ch
 Acq On : 23 Nov 2024 00:10
 Operator : YP/AJ
 Sample : AR1242CCC500
 Misc :
 ALS Vial : 4 Sample Multiplier: 1

Instrument :
 ECD_0
 ClientSampleId :
 AR1242CCC500

Integration File signal 1: autoint1.e
 Integration File signal 2: autoint2.e
 Quant Time: Nov 23 02:08:47 2024
 Quant Method : Z:\pestpcbsrv\HPCHEM1\ECD_0\methods\PO111824.M
 Quant Title : GC EXTRACTABLES
 QLast Update : Tue Nov 19 03:13:56 2024
 Response via : Initial Calibration
 Integrator: ChemStation

Volume Inj. : 2 µl
 Signal #1 Phase : ZB-MR2 Signal #2 Phase: ZB-MR2
 Signal #1 Info : 30Mx0.32mmx 0.50µ Signal #2 Info : 30M x 0.32mm x 0.25µm

Compound	RT#1	RT#2	Resp#1	Resp#2	ng/ml	ng/ml

System Monitoring Compounds						
1) SA Tetrachlo...	4.371	3.638	421.5E6	173.4E6	48.417	51.156
2) SA Decachlor...	10.100	8.637	142.4E6	139.6E6	46.617	41.028
Target Compounds						
16) L4 AR-1242-1	5.526	4.719	102.3E6	44783088	462.043	506.057
17) L4 AR-1242-2	5.549	4.738	144.8E6	62105976	460.451	502.411
18) L4 AR-1242-3	5.611	4.915	90864711	33364917	448.785	503.366
19) L4 AR-1242-4	5.709	4.998	72693920	31698568	465.652	506.539
20) L4 AR-1242-5	6.447	5.519	76311276	40915198	474.442	489.529

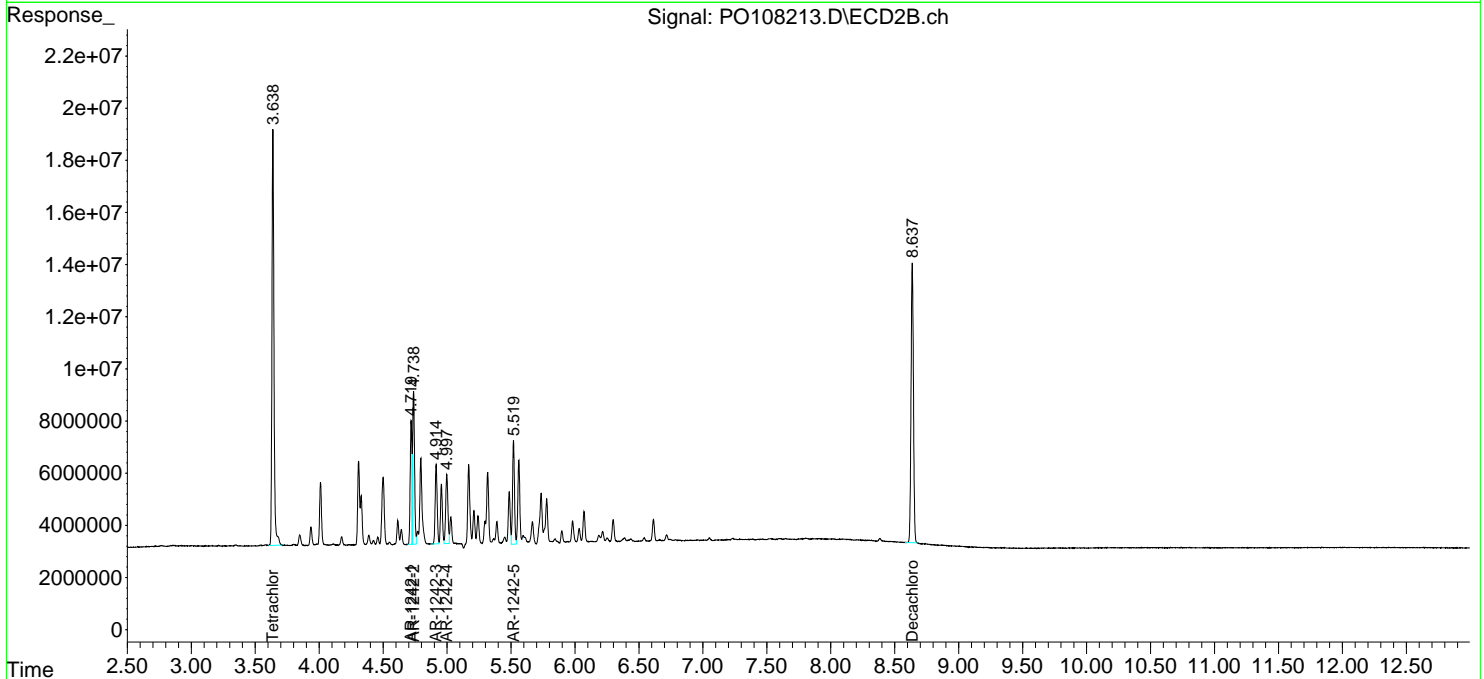
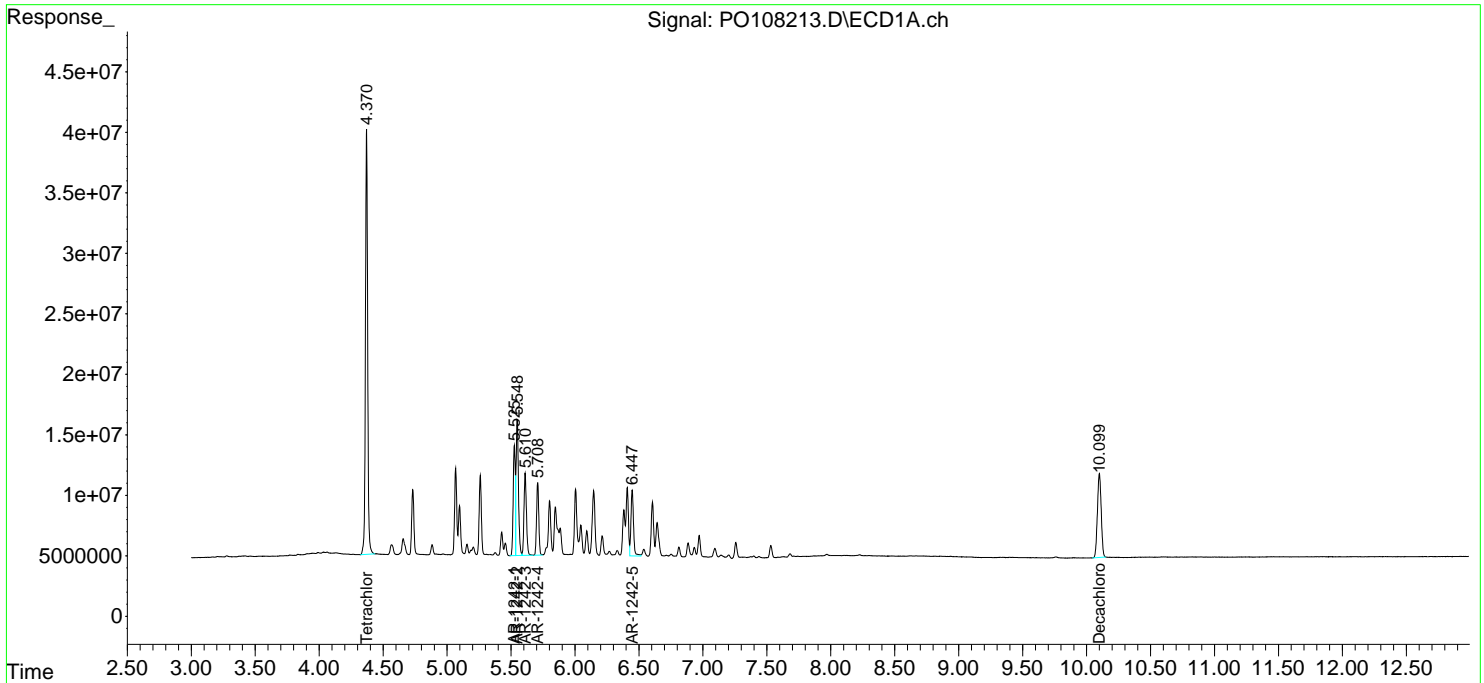
(f)=RT Delta > 1/2 Window (#)=Amounts differ by > 25% (m)=manual int.

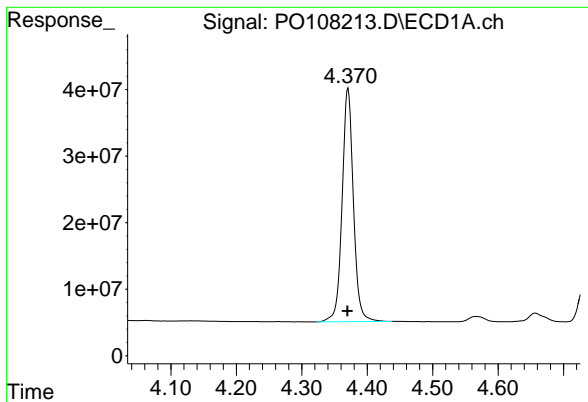
Data Path : Z:\pestpcbsrv\HPCHEM1\ECD_O\Data\PO112224\
 Data File : PO108213.D
 Signal(s) : Signal #1: ECD1A.ch Signal #2: ECD2B.ch
 Acq On : 23 Nov 2024 00:10
 Operator : YP/AJ
 Sample : AR1242CCC500
 Misc :
 ALS Vial : 4 Sample Multiplier: 1

Instrument :
 ECD_O
 ClientSampleId :
 AR1242CCC500

Integration File signal 1: autoint1.e
 Integration File signal 2: autoint2.e
 Quant Time: Nov 23 02:08:47 2024
 Quant Method : Z:\pestpcbsrv\HPCHEM1\ECD_O\methods\PO111824.M
 Quant Title : GC EXTRACTABLES
 QLast Update : Tue Nov 19 03:13:56 2024
 Response via : Initial Calibration
 Integrator: ChemStation

Volume Inj. : 2 µl
 Signal #1 Phase : ZB-MR1 Signal #2 Phase: ZB-MR2
 Signal #1 Info : 30Mx0.32mmx 0.50µ Signal #2 Info : 30M x 0.32mm x 0.25µm

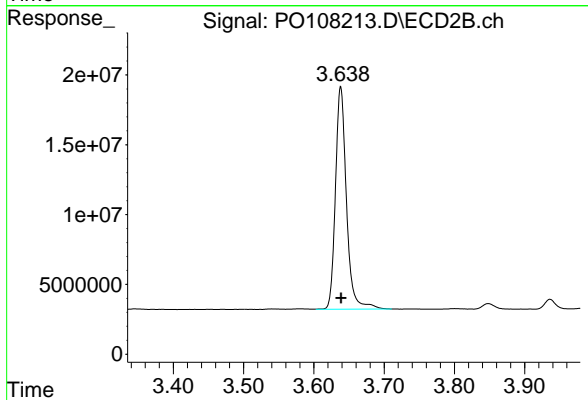




#1 Tetrachloro-m-xylene

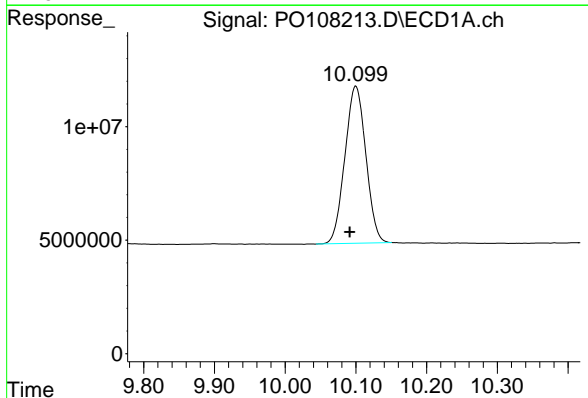
R.T.: 4.371 min
 Delta R.T.: 0.000 min
 Response: 421522280
 Conc: 48.42 ng/ml

Instrument :
 ECD_O
 ClientSampleId :
 AR1242CCC500



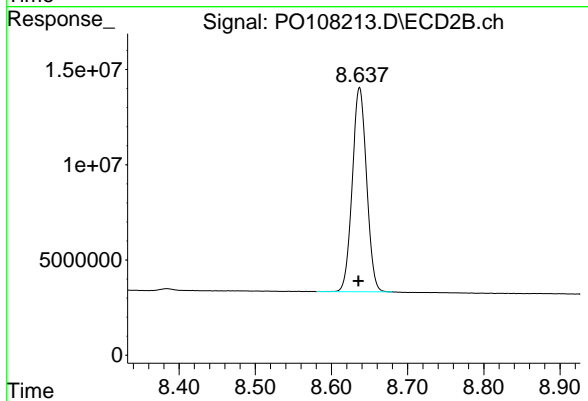
#1 Tetrachloro-m-xylene

R.T.: 3.638 min
 Delta R.T.: 0.000 min
 Response: 173441123
 Conc: 51.16 ng/ml



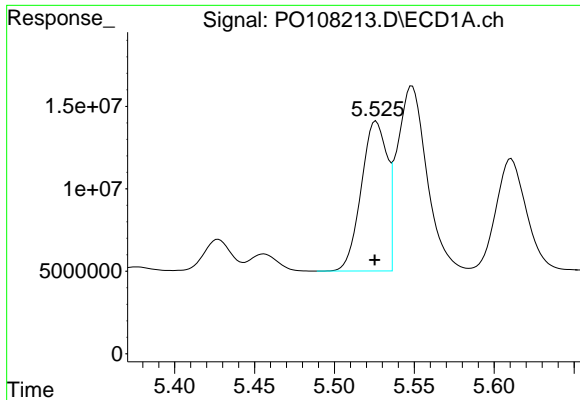
#2 Decachlorobiphenyl

R.T.: 10.100 min
 Delta R.T.: 0.009 min
 Response: 142378861
 Conc: 46.62 ng/ml



#2 Decachlorobiphenyl

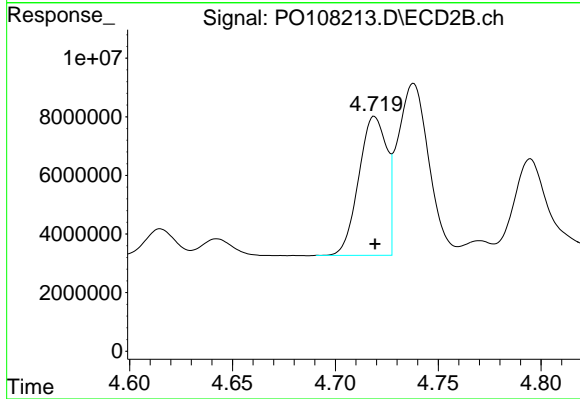
R.T.: 8.637 min
 Delta R.T.: 0.002 min
 Response: 139567011
 Conc: 41.03 ng/ml



#16 AR-1242-1

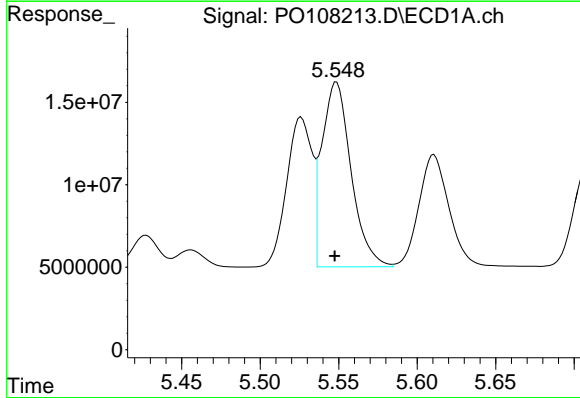
R.T.: 5.526 min
 Delta R.T.: 0.000 min
 Response: 102281252
 Conc: 462.04 ng/ml

Instrument :
 ECD_O
 ClientSampleId :
 AR1242CCC500



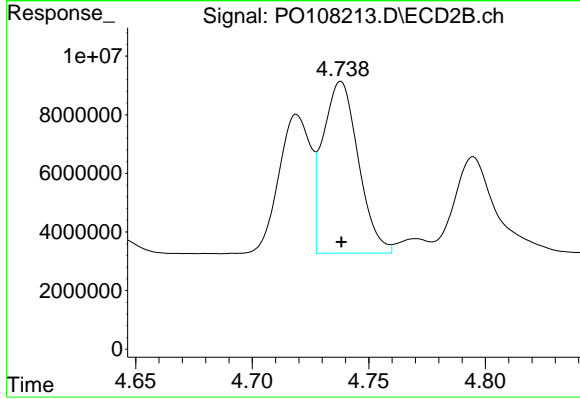
#16 AR-1242-1

R.T.: 4.719 min
 Delta R.T.: 0.000 min
 Response: 44783088
 Conc: 506.06 ng/ml



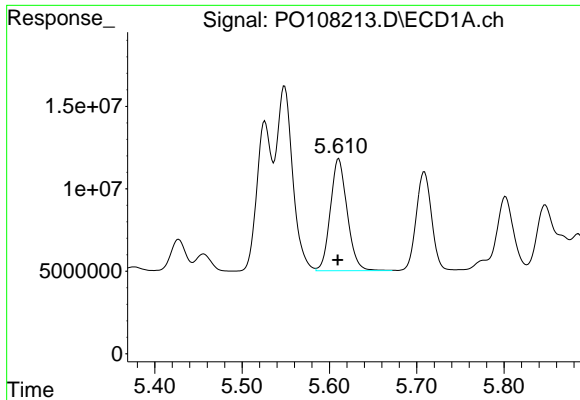
#17 AR-1242-2

R.T.: 5.549 min
 Delta R.T.: 0.001 min
 Response: 144812423
 Conc: 460.45 ng/ml



#17 AR-1242-2

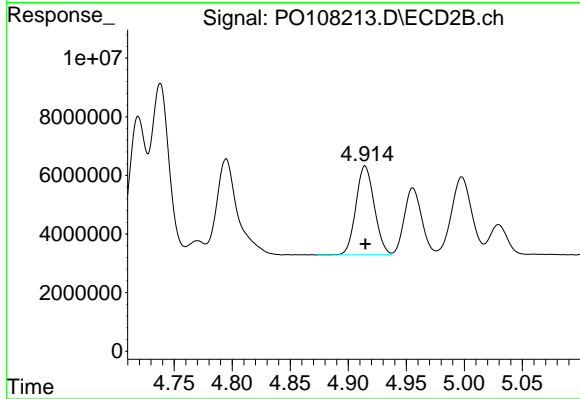
R.T.: 4.738 min
 Delta R.T.: 0.000 min
 Response: 62105976
 Conc: 502.41 ng/ml



#18 AR-1242-3

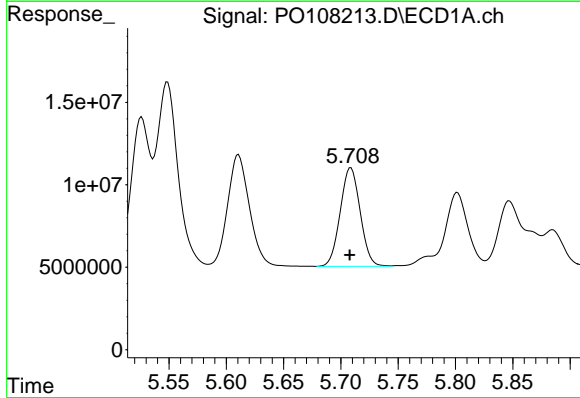
R.T.: 5.611 min
 Delta R.T.: 0.000 min
 Response: 90864711
 Conc: 448.79 ng/ml

Instrument :
 ECD_O
 ClientSampleId :
 AR1242CCC500



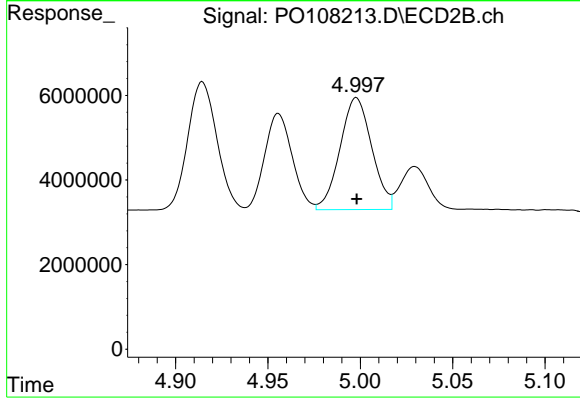
#18 AR-1242-3

R.T.: 4.915 min
 Delta R.T.: 0.000 min
 Response: 33364917
 Conc: 503.37 ng/ml



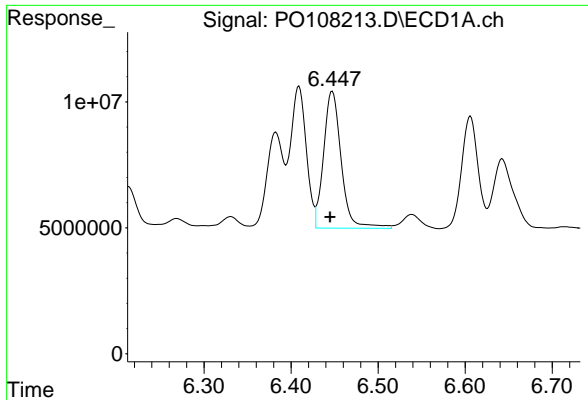
#19 AR-1242-4

R.T.: 5.709 min
 Delta R.T.: 0.000 min
 Response: 72693920
 Conc: 465.65 ng/ml



#19 AR-1242-4

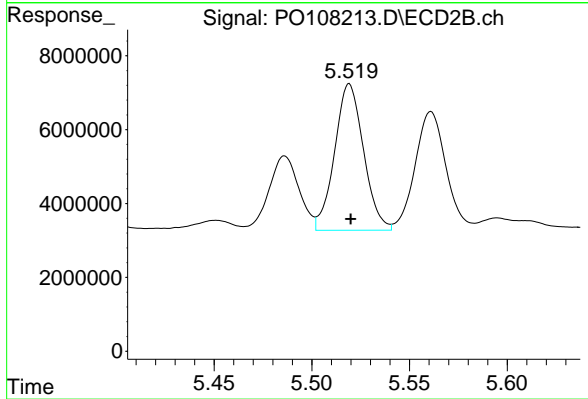
R.T.: 4.998 min
 Delta R.T.: 0.000 min
 Response: 31698568
 Conc: 506.54 ng/ml



#20 AR-1242-5

R.T.: 6.447 min
Delta R.T.: 0.003 min
Response: 76311276
Conc: 474.44 ng/ml

Instrument :
ECD_O
ClientSampleId :
AR1242CCC500



#20 AR-1242-5

R.T.: 5.519 min
Delta R.T.: 0.000 min
Response: 40915198
Conc: 489.53 ng/ml