

Data Path : Z:\pestpcbsrv\HPCHEM1\ECD\_0\Data\PO112420\  
 Data File : PO073495.D  
 Signal(s) : Signal #1: ECD1A.CH Signal #2: ECD2B.CH  
 Acq On : 24 Nov 2020 9:13  
 Operator : DD\AJ  
 Sample : AR1660CCC500  
 Misc :  
 ALS Vial : 3 Sample Multiplier: 1

Instrument :  
 ECD\_O  
 ClientSampleId :

Integration File signal 1: autoint1.e  
 Integration File signal 2: autoint2.e  
 Quant Time: Nov 25 10:25:35 2020  
 Quant Method : Z:\pestpcbsrv\HPCHEM1\ECD\_0\methods\PO112320.M  
 Quant Title : GC EXTRACTABLES  
 QLast Update : Wed Nov 25 10:04:26 2020  
 Response via : Initial Calibration  
 Integrator: ChemStation 6890 Scale Mode: Small noise peaks clipped

Volume Inj. : 2 µl  
 Signal #1 Phase : ZB-MR1 Signal #2 Phase: ZB-MR2  
 Signal #1 Info : 30Mx0.32mmx 0.50µ Signal #2 Info : 30M x 0.32mm x 0.25µm

Compound	RT#1	RT#2	Resp#1	Resp#2	ng/ml	ng/ml
System Monitoring Compounds						
1) SA Tetrachlo...	4.942	4.007	4848737	2660375	57.964	54.262
2) SA Decachlor...	10.965	9.273	3929236	2257889	47.655	49.244
Target Compounds						
3) L1 AR-1016-1	6.265	5.255	1786043	1074231	542.375	527.304
4) L1 AR-1016-2	6.288	5.276	2513101	1468679	545.915	525.137
5) L1 AR-1016-3	6.355	5.465	1502709	791382	548.791	532.189
6) L1 AR-1016-4	6.463	5.517	1267288	640259	555.236	538.730
7) L1 AR-1016-5	6.778	5.744	1218056	750044	541.756	498.268
8) L2 AR-1221-1	5.188	4.261	170568	102023	171.952	181.015
9) L2 AR-1221-2	5.292	4.360	231827	145274	329.616	359.379
10) L2 AR-1221-3	5.379	4.448	887381	518265	395.781	390.228
11) L3 AR-1232-1	5.379	4.448	887381	518265	480.840	455.670
12) L3 AR-1232-2	5.969	5.276	1209667	1468679	1271.157	1228.823
13) L3 AR-1232-3	6.288	5.465	2513101	791382	1284.732	1261.534
14) L3 AR-1232-4	6.463	5.561	1267288	751299	1281.759	1393.534
15) L3 AR-1232-5	6.561	5.744	1095160	750044	1626.676	1269.590
16) L4 AR-1242-1	6.265	5.255	1786043	1074231	677.183	656.811
17) L4 AR-1242-2	6.288	5.276	2513101	1468679	687.496	649.335
18) L4 AR-1242-3	6.355	5.465	1502709	791382	681.409	659.150
19) L4 AR-1242-4	6.463	5.561	1267288	751299	682.750	683.558
20) L4 AR-1242-5	7.248	6.121	313514	679015	149.054	438.533 #
21) L5 AR-1248-1	6.265	5.255	1786043	1074231	893.421	856.590
22) L5 AR-1248-2	6.561	5.517	1095160	640259	423.626	378.597
23) L5 AR-1248-3	6.778	5.561	1218056	751299	397.465	440.262
24) L5 AR-1248-4	7.208	5.744	302161	750044	81.002	364.862 #
25) L5 AR-1248-5	7.248	6.164	313514	161322	87.624	72.650
26) L6 AR-1254-1	7.178	6.121	965491	679015	279.178	218.066
27) L6 AR-1254-2	7.407	6.279	1050497	639831	192.824	234.370
28) L6 AR-1254-3	7.790	6.716f	538105	1152800	94.950	272.579 #
29) L6 AR-1254-4	8.085	6.935	398676	204953	82.403	70.991
30) L6 AR-1254-5	8.515	7.361	2909981	1826964	611.294	494.688
31) L7 AR-1260-1	7.957	6.834	2042591	1465725	506.189	545.532
32) L7 AR-1260-2	8.223	7.030	2668599	1797325	485.565	538.851
33) L7 AR-1260-3	8.589	7.184	2173953	1548414	489.902	501.240
34) L7 AR-1260-4	8.821	7.664	2184845	1284800	506.201	522.107
35) L7 AR-1260-5	9.147	7.910	4839856	3113603	490.118	502.595
36) L8 AR-1262-1	8.589	7.361	2173953	1826964	348.201	942.735 #
37) L8 AR-1262-2	9.147	7.910	4839856	3113603	447.419	474.893
38) L8 AR-1262-3	9.480f	8.195	3181462	731796	433.443	271.221 #
39) L8 AR-1262-4	9.534f	8.257	1965004	2147214	357.076	449.706 #
40) L8 AR-1262-5	10.218	8.752	1407842	839202	361.692	366.931
41) L9 AR-1268-1	9.480f	8.195	3181462	731796	227.762	89.832 #

Data Path : Z:\pestpcbsrv\HPCHEM1\ECD\_0\Data\PO112420\  
 Data File : PO073495.D  
 Signal(s) : Signal #1: ECD1A.CH Signal #2: ECD2B.CH  
 Acq On : 24 Nov 2020 9:13  
 Operator : DD\AJ  
 Sample : AR1660CCC500  
 Misc :  
 ALS Vial : 3 Sample Multiplier: 1

Instrument :  
 ECD\_0  
 ClientSampleId :

Integration File signal 1: autoint1.e  
 Integration File signal 2: autoint2.e  
 Quant Time: Nov 25 10:25:35 2020  
 Quant Method : Z:\pestpcbsrv\HPCHEM1\ECD\_0\methods\PO112320.M  
 Quant Title : GC EXTRACTABLES  
 QLast Update : Wed Nov 25 10:04:26 2020  
 Response via : Initial Calibration  
 Integrator: ChemStation 6890 Scale Mode: Small noise peaks clipped

Volume Inj. : 2 µl  
 Signal #1 Phase : ZB-MR1 Signal #2 Phase: ZB-MR2  
 Signal #1 Info : 30Mx0.32mmx 0.50µ Signal #2 Info : 30M x 0.32mm x 0.25µm

	Compound	RT#1	RT#2	Resp#1	Resp#2	ng/ml	ng/ml
42)	L9 AR-1268-2	9.534f	8.257	1965004	2147214	161.752	293.989 #
43)	L9 AR-1268-3	9.780	8.466	72438	40345	6.876	6.450
44)	L9 AR-1268-4	10.218	8.752	1407842	839202	312.073	313.299
45)	L9 AR-1268-5	10.630	9.030	410087	244944	12.885	13.428

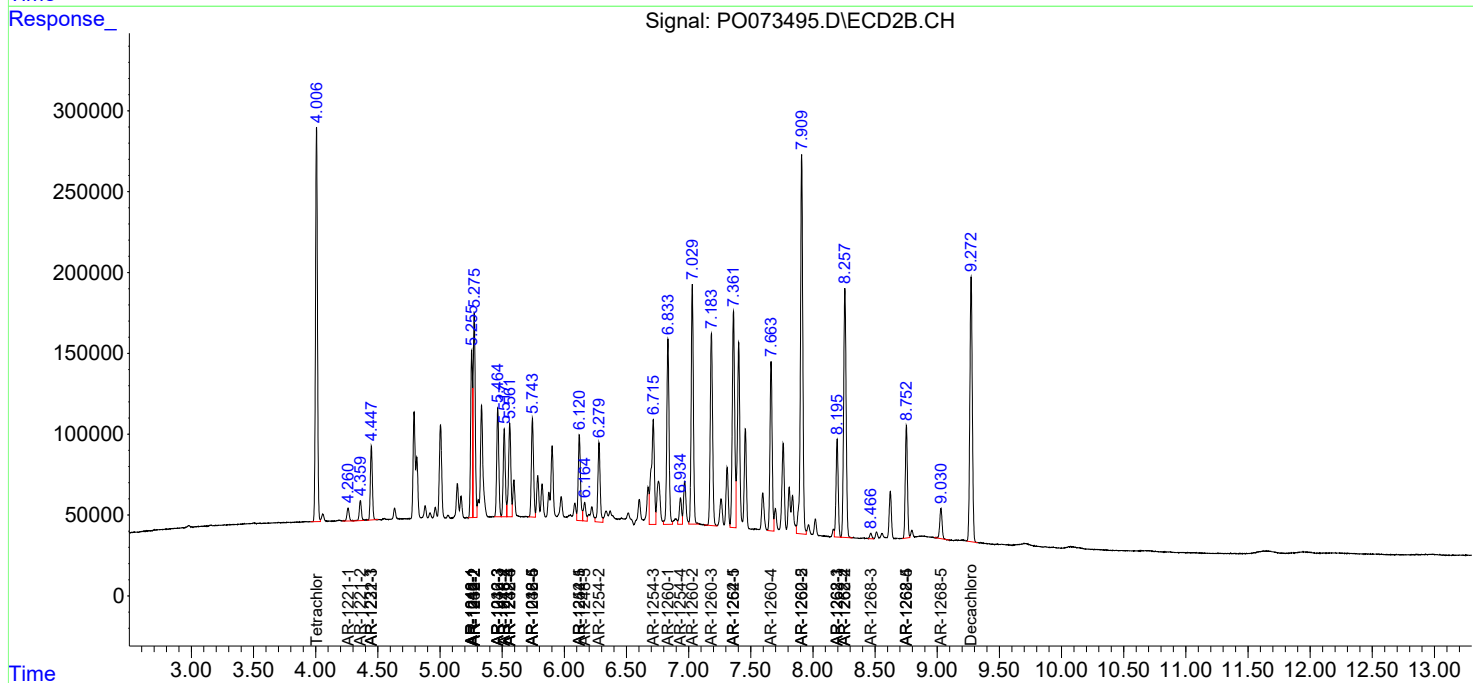
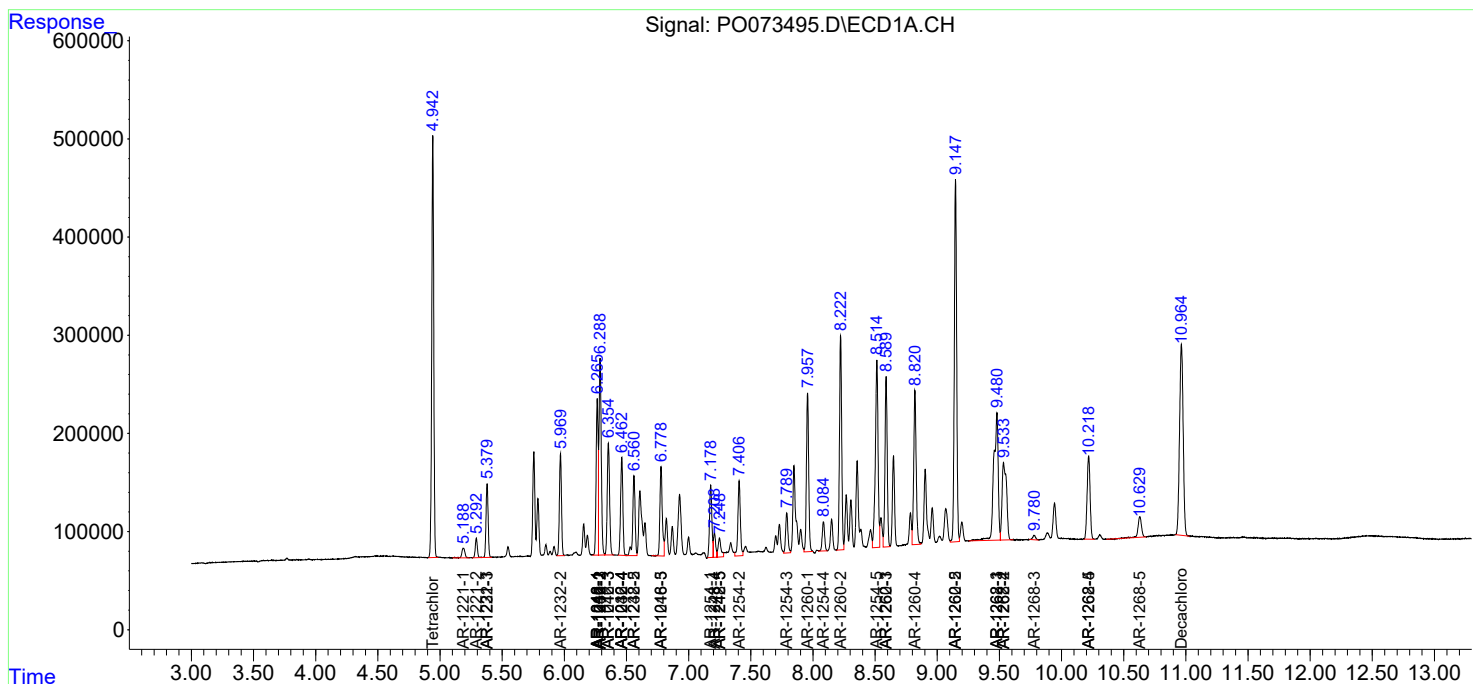
(f)=RT Delta > 1/2 Window (#)=Amounts differ by > 25% (m)=manual int.

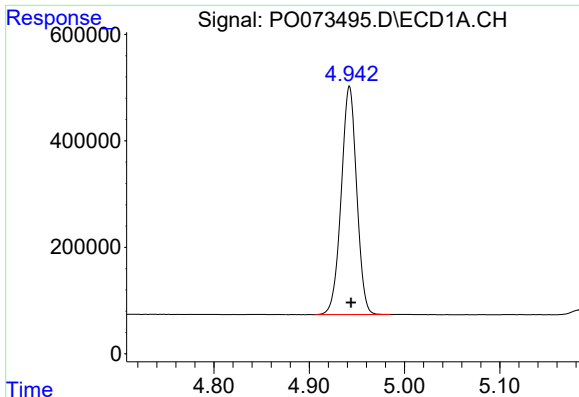
Data Path : Z:\pestpcbsrv\HPCHEM1\ECD\_0\Data\PO112420\  
 Data File : PO073495.D  
 Signal(s) : Signal #1: ECD1A.CH Signal #2: ECD2B.CH  
 Acq On : 24 Nov 2020 9:13  
 Operator : DD\AJ  
 Sample : AR1660CCC500  
 Misc :  
 ALS Vial : 3 Sample Multiplier: 1

Instrument :  
 ECD\_O  
 ClientSampled :

Integration File signal 1: autoint1.e  
 Integration File signal 2: autoint2.e  
 Quant Time: Nov 25 10:25:35 2020  
 Quant Method : Z:\pestpcbsrv\HPCHEM1\ECD\_0\methods\PO112320.M  
 Quant Title : GC EXTRACTABLES  
 QLast Update : Wed Nov 25 10:04:26 2020  
 Response via : Initial Calibration  
 Integrator: ChemStation 6890 Scale Mode: Small noise peaks clipped

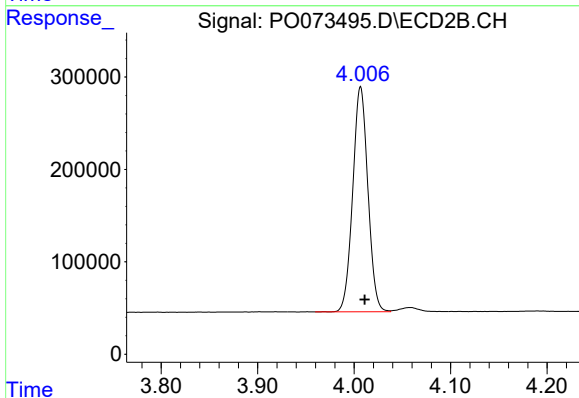
Volume Inj. : 2 µl  
 Signal #1 Phase : ZB-MR1 Signal #2 Phase: ZB-MR2  
 Signal #1 Info : 30Mx0.32mmx 0.50µ Signal #2 Info : 30M x 0.32mm x 0.25µm



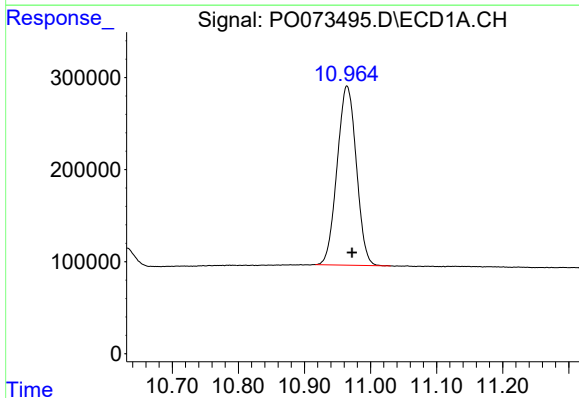


#1 Tetrachloro-m-xylene  
 R.T.: 4.942 min  
 Delta R.T.: -0.002 min  
 Response: 4848737  
 Conc: 57.96 ng/ml

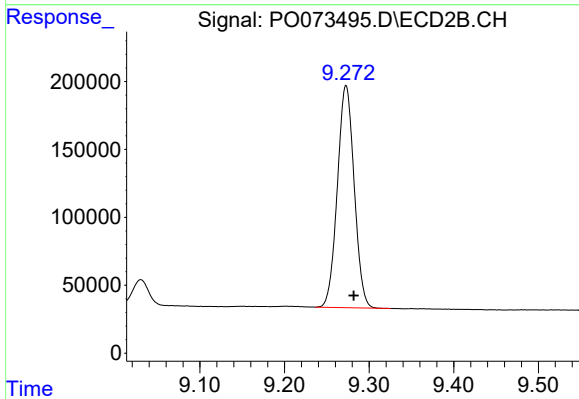
Instrument :  
 ECD\_O  
 ClientSampleId :



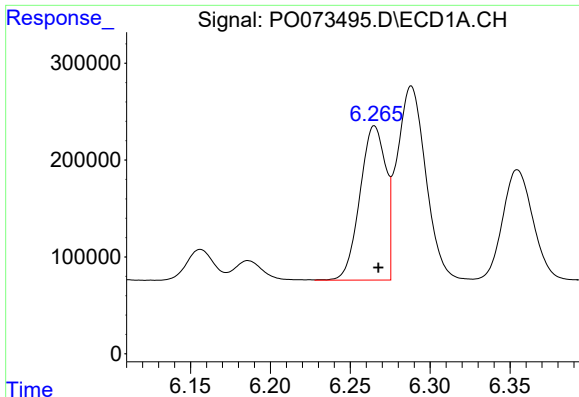
#1 Tetrachloro-m-xylene  
 R.T.: 4.007 min  
 Delta R.T.: -0.004 min  
 Response: 2660375  
 Conc: 54.26 ng/ml



#2 Decachlorobiphenyl  
 R.T.: 10.965 min  
 Delta R.T.: -0.007 min  
 Response: 3929236  
 Conc: 47.66 ng/ml



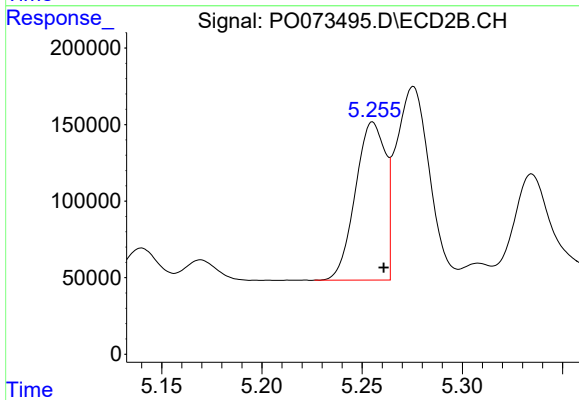
#2 Decachlorobiphenyl  
 R.T.: 9.273 min  
 Delta R.T.: -0.009 min  
 Response: 2257889  
 Conc: 49.24 ng/ml



#3 AR-1016-1

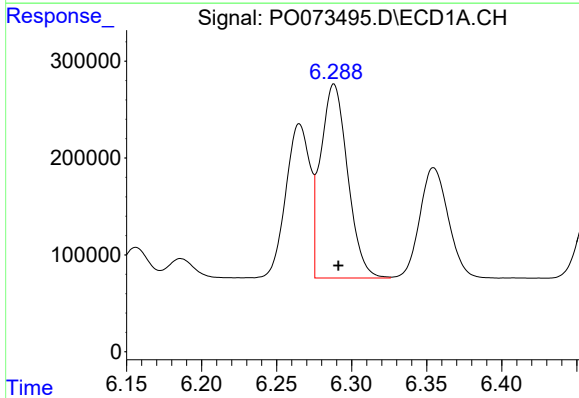
R.T.: 6.265 min  
 Delta R.T.: -0.002 min  
 Response: 1786043  
 Conc: 542.37 ng/ml

Instrument :  
 ECD\_O  
 ClientSampled :



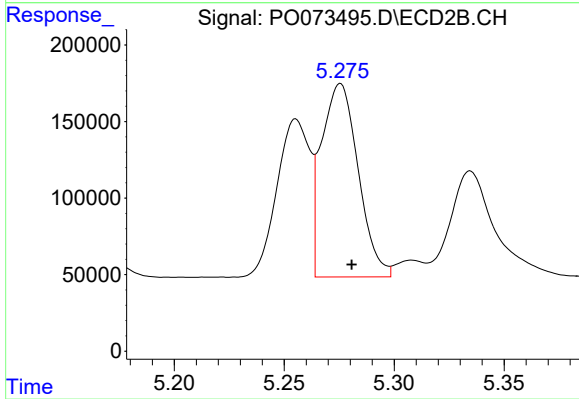
#3 AR-1016-1

R.T.: 5.255 min  
 Delta R.T.: -0.005 min  
 Response: 1074231  
 Conc: 527.30 ng/ml



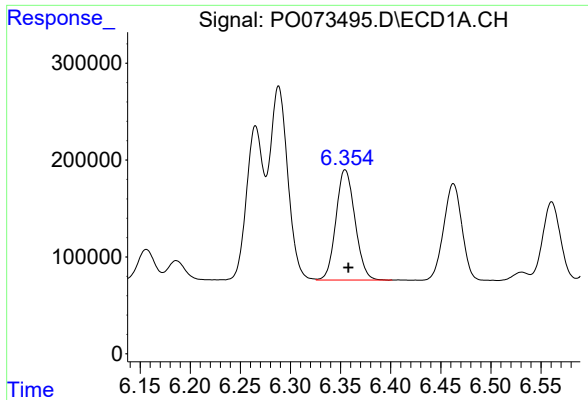
#4 AR-1016-2

R.T.: 6.288 min  
 Delta R.T.: -0.003 min  
 Response: 2513101  
 Conc: 545.91 ng/ml



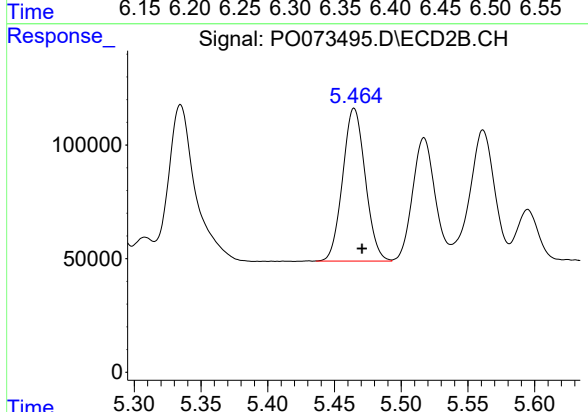
#4 AR-1016-2

R.T.: 5.276 min  
 Delta R.T.: -0.005 min  
 Response: 1468679  
 Conc: 525.14 ng/ml

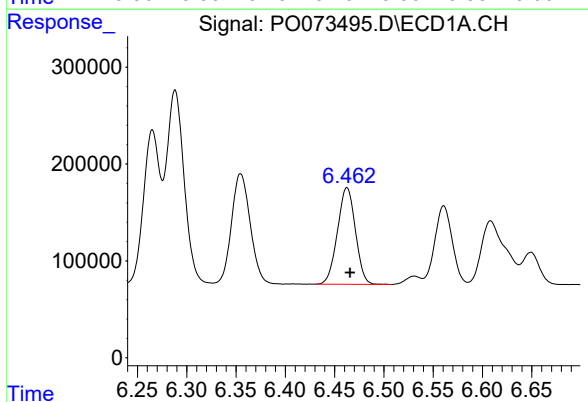


#5 AR-1016-3  
 R.T.: 6.355 min  
 Delta R.T.: -0.003 min  
 Response: 1502709  
 Conc: 548.79 ng/ml

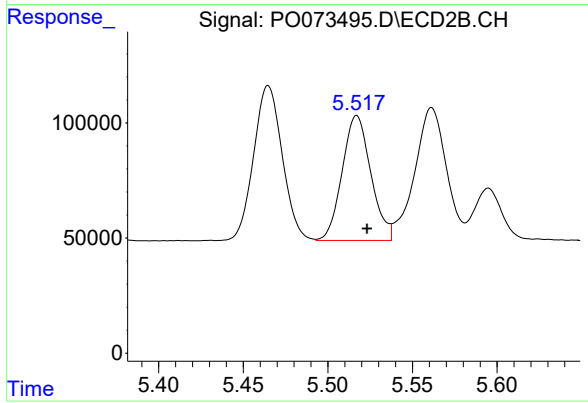
Instrument :  
 ECD\_O  
 ClientSampled :



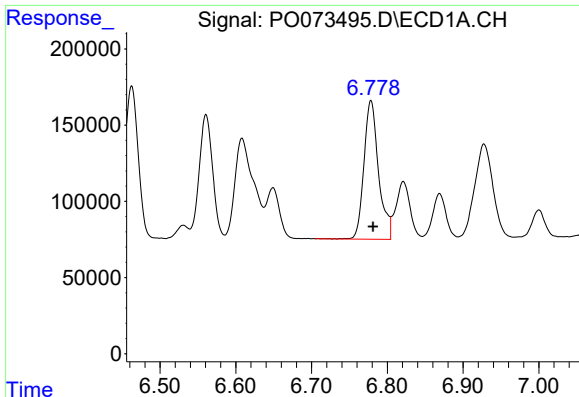
#5 AR-1016-3  
 R.T.: 5.465 min  
 Delta R.T.: -0.006 min  
 Response: 791382  
 Conc: 532.19 ng/ml



#6 AR-1016-4  
 R.T.: 6.463 min  
 Delta R.T.: -0.003 min  
 Response: 1267288  
 Conc: 555.24 ng/ml



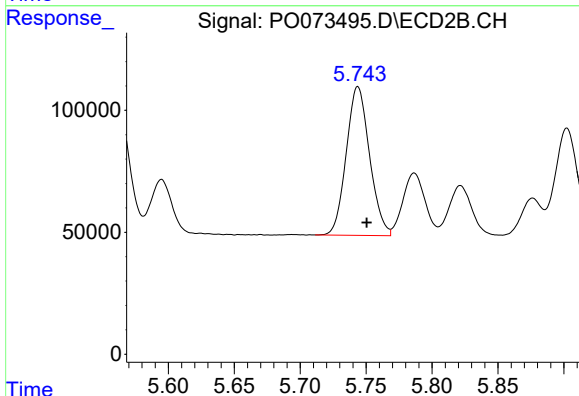
#6 AR-1016-4  
 R.T.: 5.517 min  
 Delta R.T.: -0.006 min  
 Response: 640259  
 Conc: 538.73 ng/ml



#7 AR-1016-5

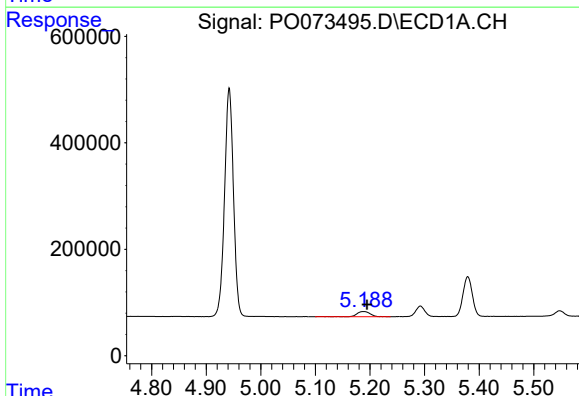
R.T.: 6.778 min  
 Delta R.T.: -0.003 min  
 Response: 1218056  
 Conc: 541.76 ng/ml

Instrument :  
 ECD\_O  
 ClientSampleId :



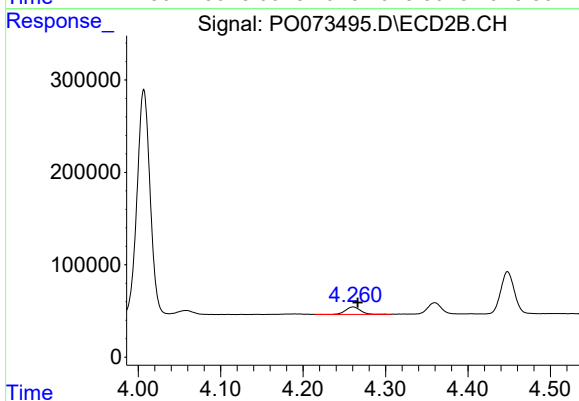
#7 AR-1016-5

R.T.: 5.744 min  
 Delta R.T.: -0.007 min  
 Response: 750044  
 Conc: 498.27 ng/ml



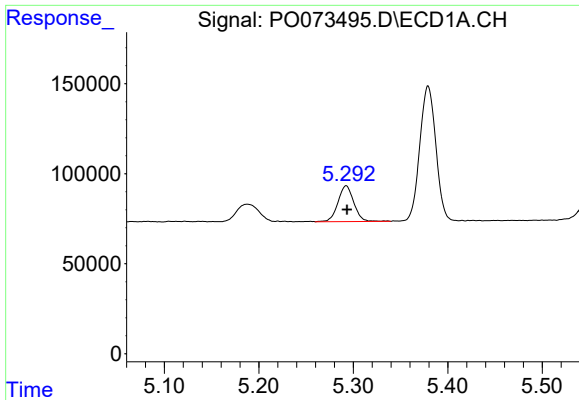
#8 AR-1221-1

R.T.: 5.188 min  
 Delta R.T.: -0.006 min  
 Response: 170568  
 Conc: 171.95 ng/ml



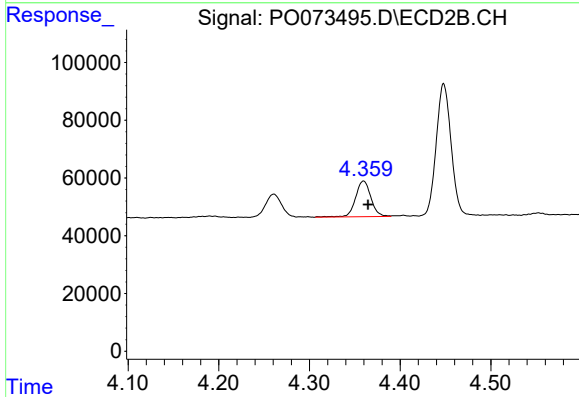
#8 AR-1221-1

R.T.: 4.261 min  
 Delta R.T.: -0.006 min  
 Response: 102023  
 Conc: 181.01 ng/ml

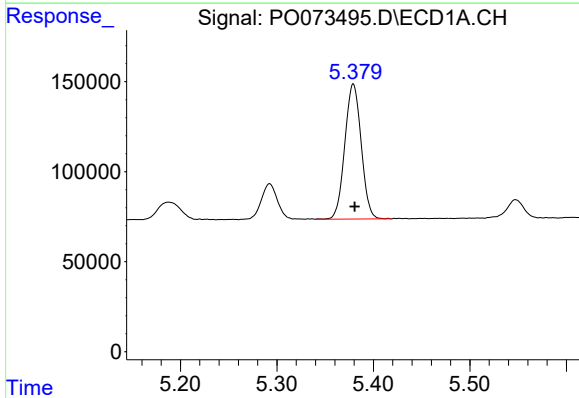


#9 AR-1221-2  
 R.T.: 5.292 min  
 Delta R.T.: -0.001 min  
 Response: 231827  
 Conc: 329.62 ng/ml

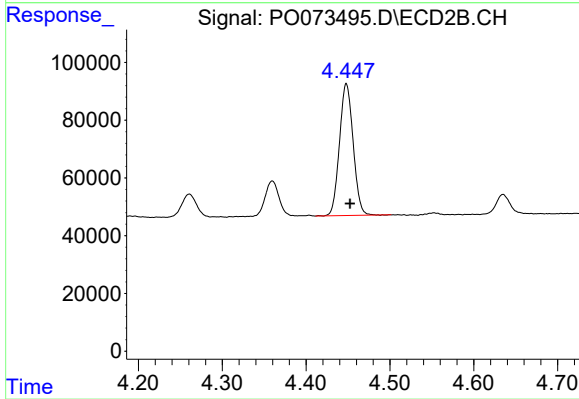
Instrument :  
 ECD\_O  
 ClientSampleId :



#9 AR-1221-2  
 R.T.: 4.360 min  
 Delta R.T.: -0.005 min  
 Response: 145274  
 Conc: 359.38 ng/ml

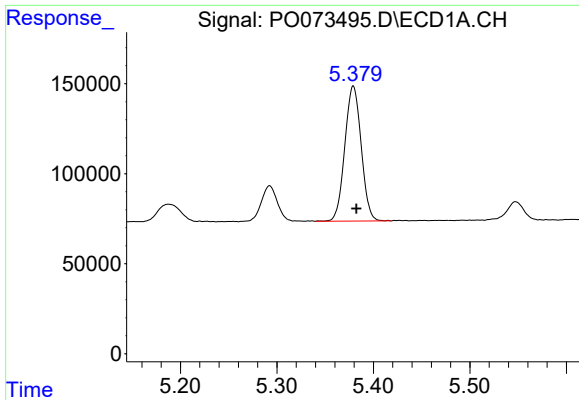


#10 AR-1221-3  
 R.T.: 5.379 min  
 Delta R.T.: -0.002 min  
 Response: 887381  
 Conc: 395.78 ng/ml



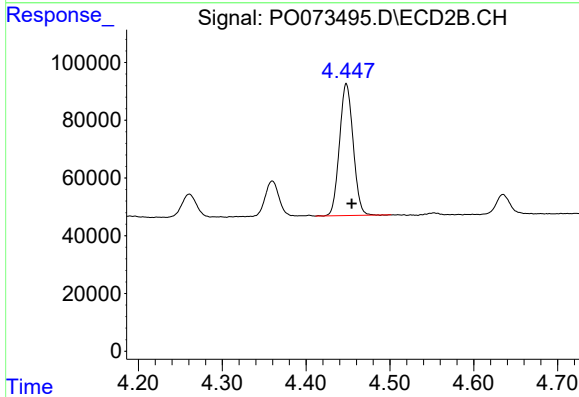
#10 AR-1221-3  
 R.T.: 4.448 min  
 Delta R.T.: -0.005 min  
 Response: 518265  
 Conc: 390.23 ng/ml



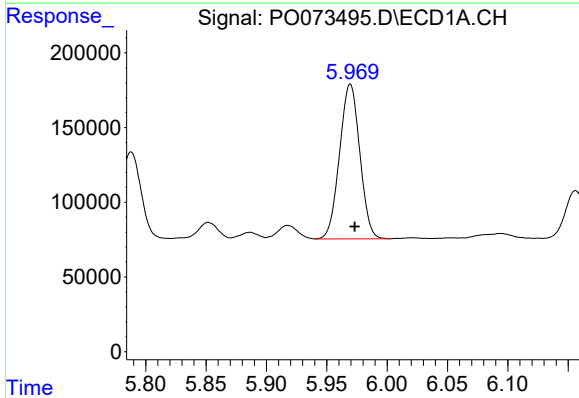


#11 AR-1232-1  
 R.T.: 5.379 min  
 Delta R.T.: -0.003 min  
 Response: 887381  
 Conc: 480.84 ng/ml

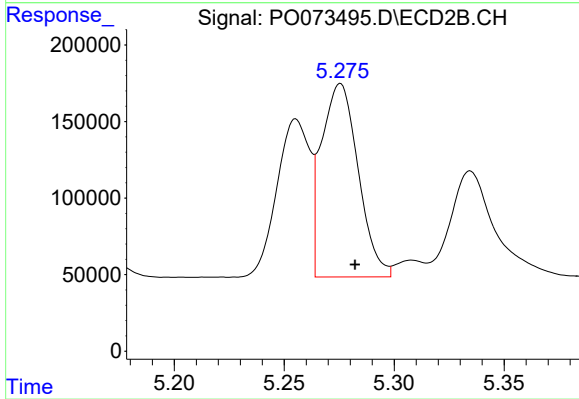
Instrument :  
 ECD\_O  
 ClientSampleId :



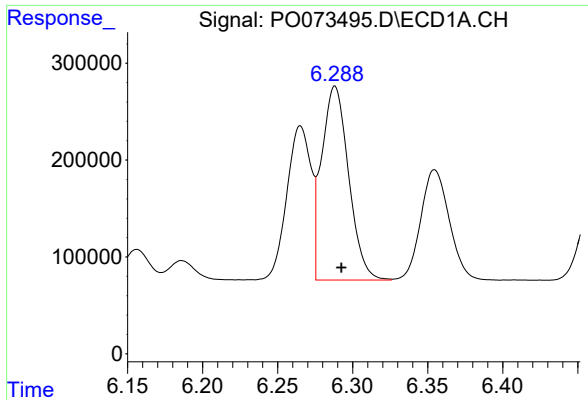
#11 AR-1232-1  
 R.T.: 4.448 min  
 Delta R.T.: -0.006 min  
 Response: 518265  
 Conc: 455.67 ng/ml



#12 AR-1232-2  
 R.T.: 5.969 min  
 Delta R.T.: -0.004 min  
 Response: 1209667  
 Conc: 1271.16 ng/ml

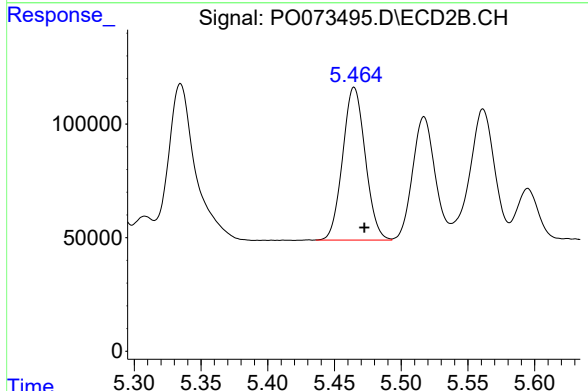


#12 AR-1232-2  
 R.T.: 5.276 min  
 Delta R.T.: -0.007 min  
 Response: 1468679  
 Conc: 1228.82 ng/ml

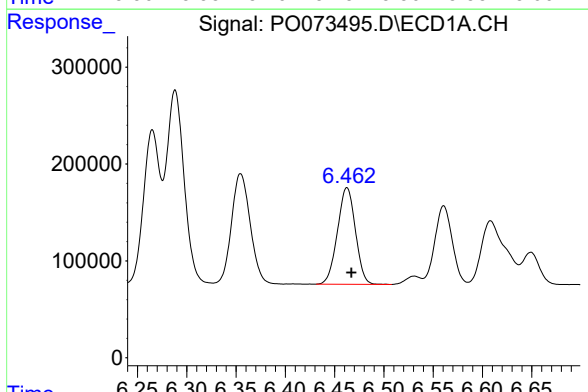


#13 AR-1232-3  
 R.T.: 6.288 min  
 Delta R.T.: -0.004 min  
 Response: 2513101  
 Conc: 1284.73 ng/ml

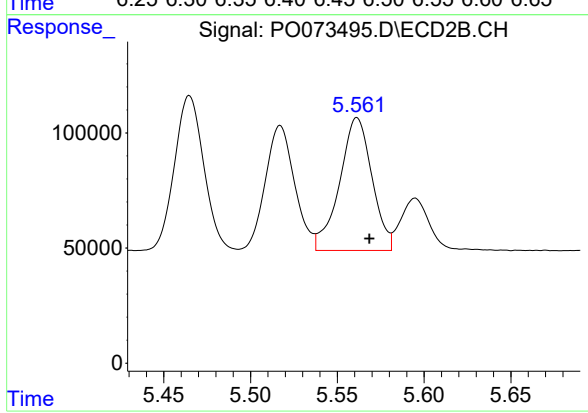
Instrument :  
 ECD\_O  
 ClientSampleId :



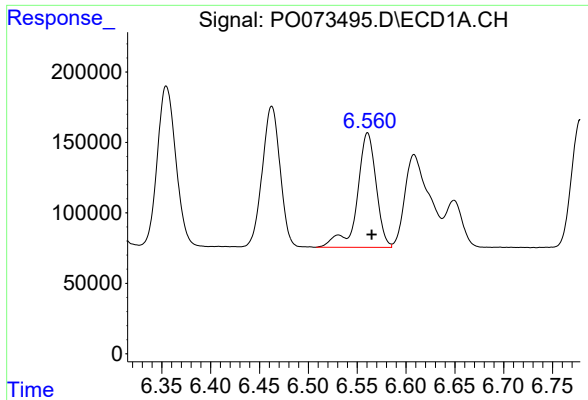
#13 AR-1232-3  
 R.T.: 5.465 min  
 Delta R.T.: -0.008 min  
 Response: 791382  
 Conc: 1261.53 ng/ml



#14 AR-1232-4  
 R.T.: 6.463 min  
 Delta R.T.: -0.004 min  
 Response: 1267288  
 Conc: 1281.76 ng/ml

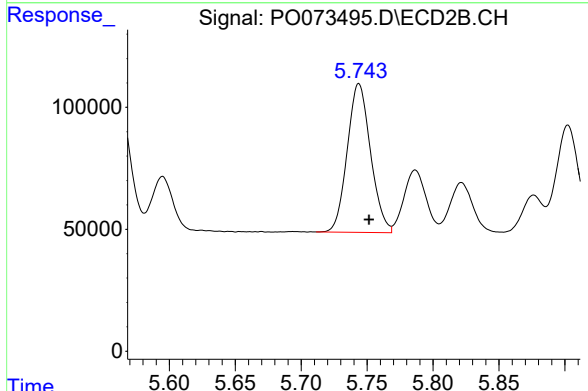


#14 AR-1232-4  
 R.T.: 5.561 min  
 Delta R.T.: -0.007 min  
 Response: 751299  
 Conc: 1393.53 ng/ml

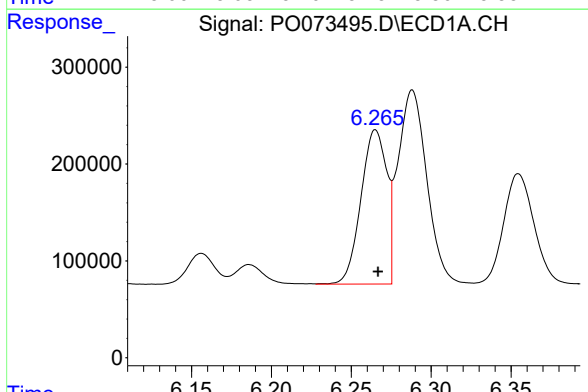


#15 AR-1232-5  
 R.T.: 6.561 min  
 Delta R.T.: -0.004 min  
 Response: 1095160  
 Conc: 1626.68 ng/ml

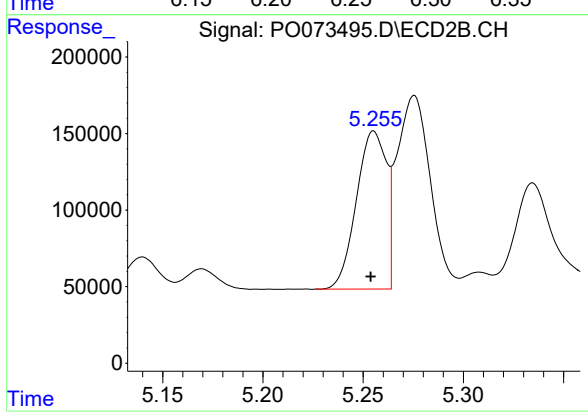
Instrument :  
 ECD\_O  
 ClientSampleId :



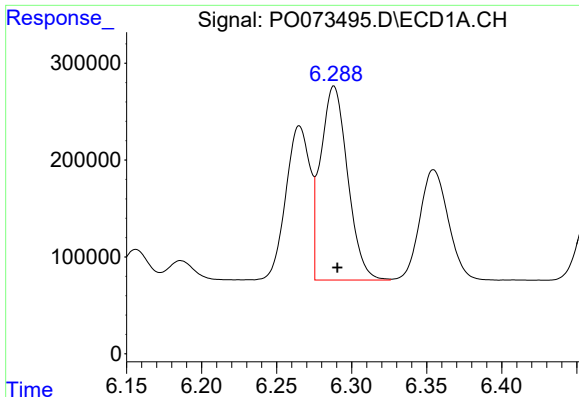
#15 AR-1232-5  
 R.T.: 5.744 min  
 Delta R.T.: -0.008 min  
 Response: 750044  
 Conc: 1269.59 ng/ml



#16 AR-1242-1  
 R.T.: 6.265 min  
 Delta R.T.: -0.001 min  
 Response: 1786043  
 Conc: 677.18 ng/ml



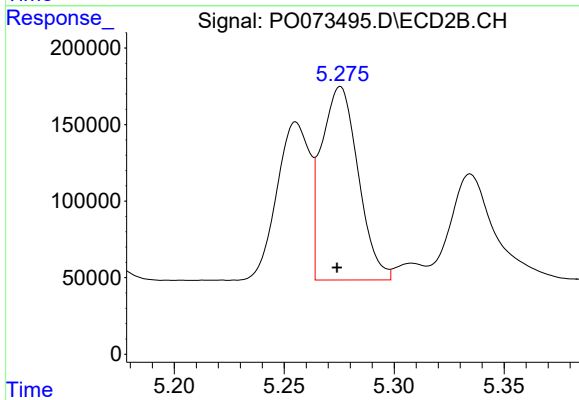
#16 AR-1242-1  
 R.T.: 5.255 min  
 Delta R.T.: 0.002 min  
 Response: 1074231  
 Conc: 656.81 ng/ml



#17 AR-1242-2

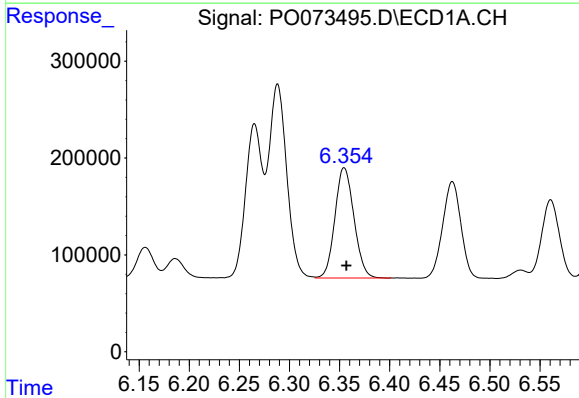
R.T.: 6.288 min  
 Delta R.T.: -0.002 min  
 Response: 2513101  
 Conc: 687.50 ng/ml

Instrument :  
 ECD\_O  
 ClientSampleId :



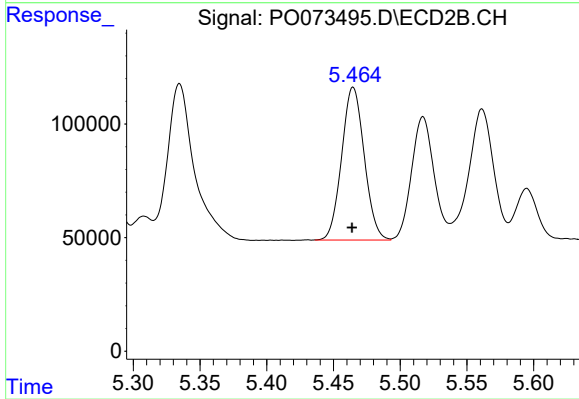
#17 AR-1242-2

R.T.: 5.276 min  
 Delta R.T.: 0.001 min  
 Response: 1468679  
 Conc: 649.33 ng/ml



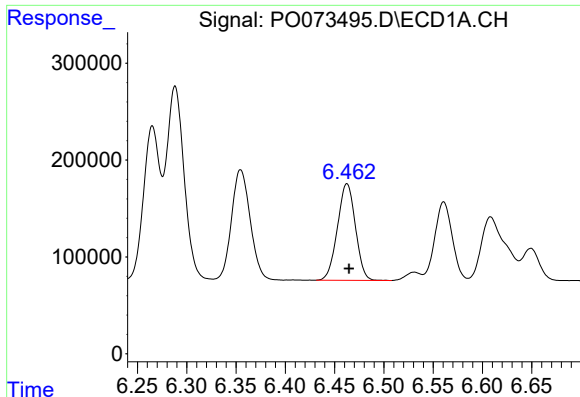
#18 AR-1242-3

R.T.: 6.355 min  
 Delta R.T.: -0.002 min  
 Response: 1502709  
 Conc: 681.41 ng/ml



#18 AR-1242-3

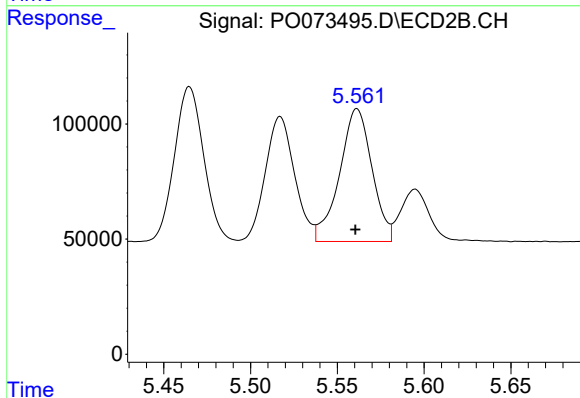
R.T.: 5.465 min  
 Delta R.T.: 0.000 min  
 Response: 791382  
 Conc: 659.15 ng/ml



#19 AR-1242-4

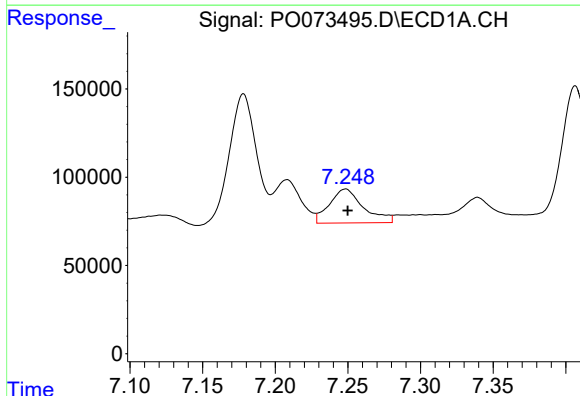
R.T.: 6.463 min  
 Delta R.T.: -0.002 min  
 Response: 1267288  
 Conc: 682.75 ng/ml

Instrument :  
 ECD\_O  
 ClientSampled :



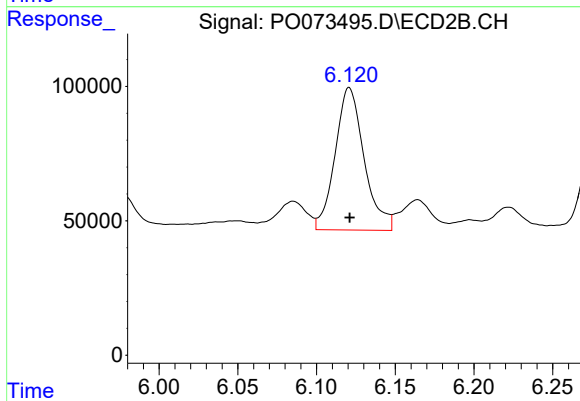
#19 AR-1242-4

R.T.: 5.561 min  
 Delta R.T.: 0.000 min  
 Response: 751299  
 Conc: 683.56 ng/ml



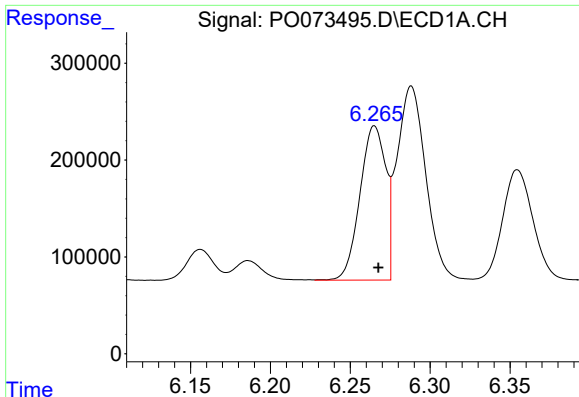
#20 AR-1242-5

R.T.: 7.248 min  
 Delta R.T.: -0.002 min  
 Response: 313514  
 Conc: 149.05 ng/ml



#20 AR-1242-5

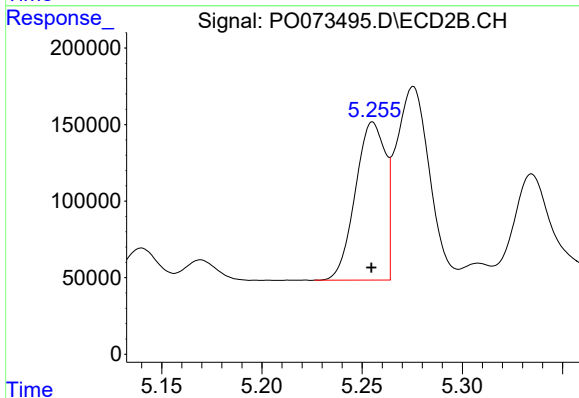
R.T.: 6.121 min  
 Delta R.T.: 0.000 min  
 Response: 679015  
 Conc: 438.53 ng/ml



#21 AR-1248-1

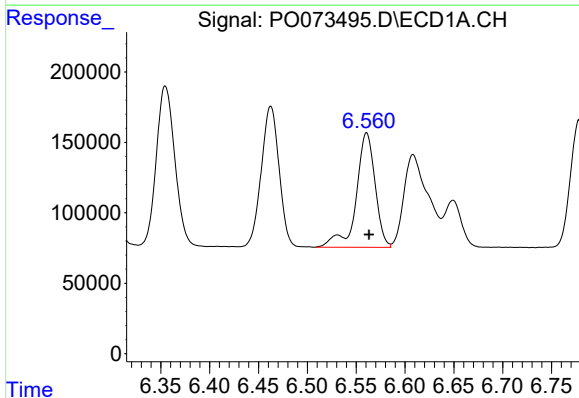
R.T.: 6.265 min  
 Delta R.T.: -0.002 min  
 Response: 1786043  
 Conc: 893.42 ng/ml

Instrument :  
 ECD\_O  
 ClientSampled :



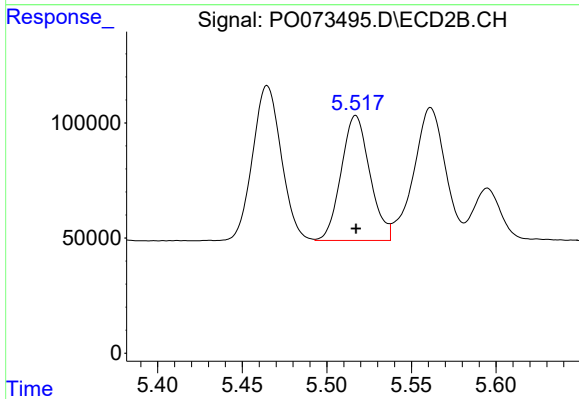
#21 AR-1248-1

R.T.: 5.255 min  
 Delta R.T.: 0.000 min  
 Response: 1074231  
 Conc: 856.59 ng/ml



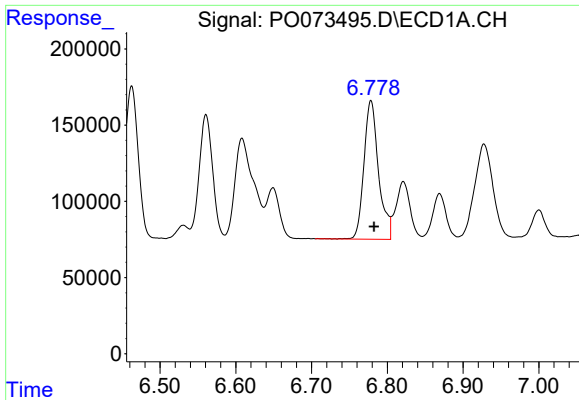
#22 AR-1248-2

R.T.: 6.561 min  
 Delta R.T.: -0.002 min  
 Response: 1095160  
 Conc: 423.63 ng/ml



#22 AR-1248-2

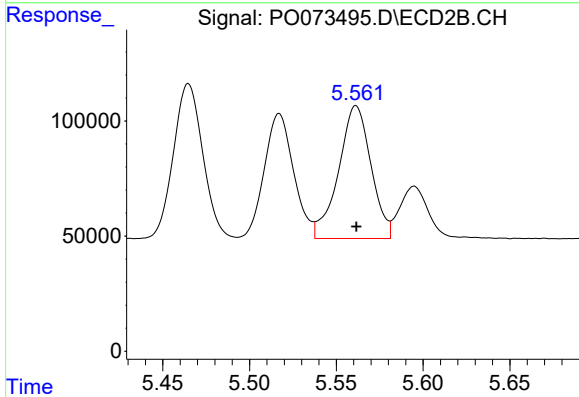
R.T.: 5.517 min  
 Delta R.T.: 0.000 min  
 Response: 640259  
 Conc: 378.60 ng/ml



#23 AR-1248-3

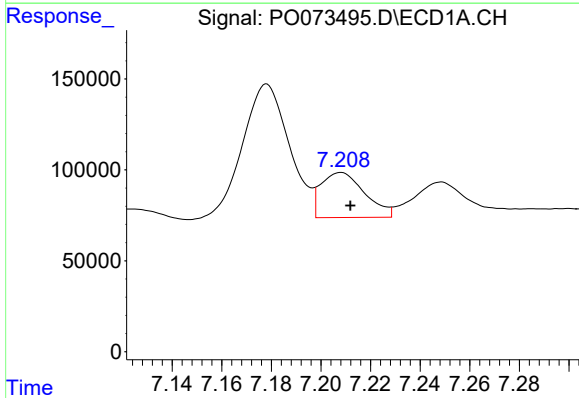
R.T.: 6.778 min  
 Delta R.T.: -0.004 min  
 Response: 1218056  
 Conc: 397.46 ng/ml

Instrument :  
 ECD\_O  
 ClientSampleId :



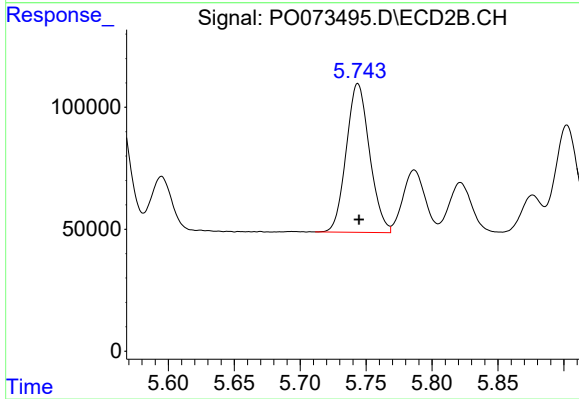
#23 AR-1248-3

R.T.: 5.561 min  
 Delta R.T.: 0.000 min  
 Response: 751299  
 Conc: 440.26 ng/ml



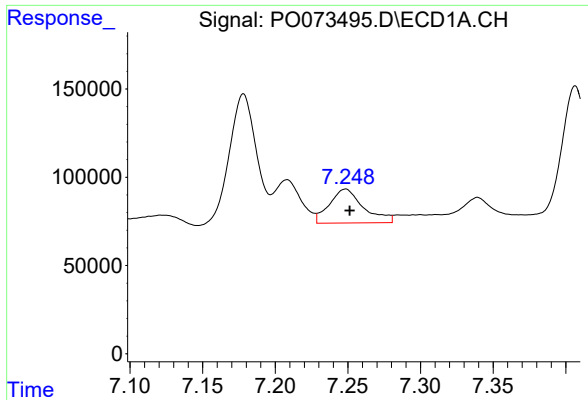
#24 AR-1248-4

R.T.: 7.208 min  
 Delta R.T.: -0.004 min  
 Response: 302161  
 Conc: 81.00 ng/ml



#24 AR-1248-4

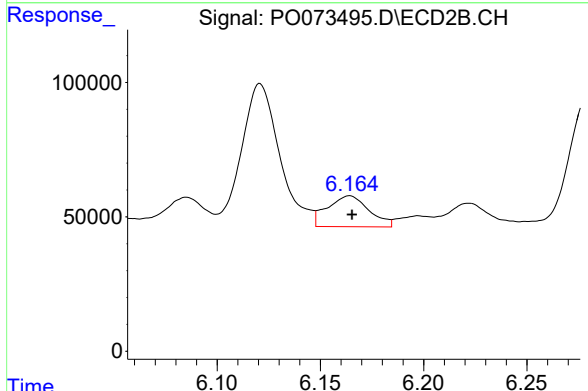
R.T.: 5.744 min  
 Delta R.T.: 0.000 min  
 Response: 750044  
 Conc: 364.86 ng/ml



#25 AR-1248-5

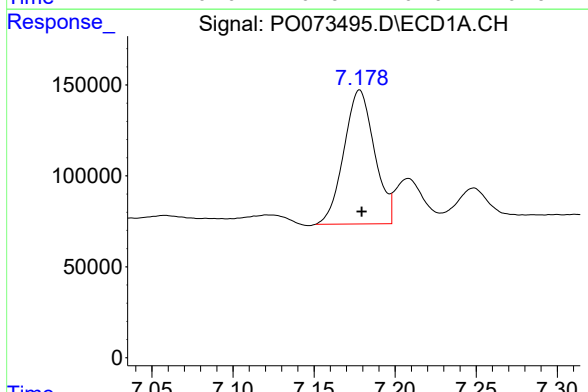
R.T.: 7.248 min  
 Delta R.T.: -0.003 min  
 Response: 313514  
 Conc: 87.62 ng/ml

Instrument :  
 ECD\_O  
 ClientSampleId :



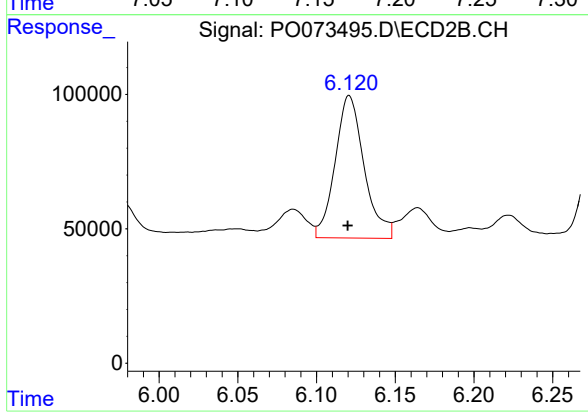
#25 AR-1248-5

R.T.: 6.164 min  
 Delta R.T.: -0.001 min  
 Response: 161322  
 Conc: 72.65 ng/ml



#26 AR-1254-1

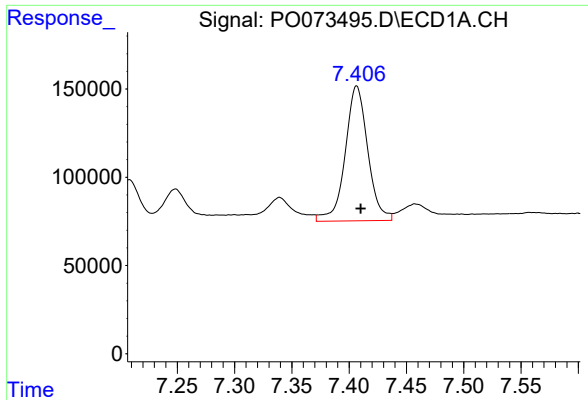
R.T.: 7.178 min  
 Delta R.T.: -0.001 min  
 Response: 965491  
 Conc: 279.18 ng/ml



#26 AR-1254-1

R.T.: 6.121 min  
 Delta R.T.: 0.001 min  
 Response: 679015  
 Conc: 218.07 ng/ml

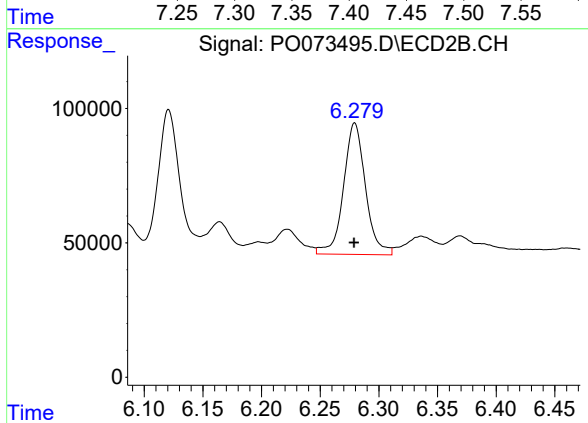




#27 AR-1254-2

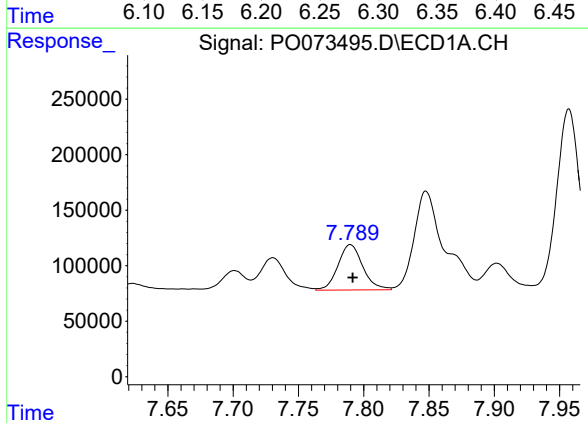
R.T.: 7.407 min  
 Delta R.T.: -0.003 min  
 Response: 1050497  
 Conc: 192.82 ng/ml

Instrument :  
 ECD\_O  
 ClientSampled :



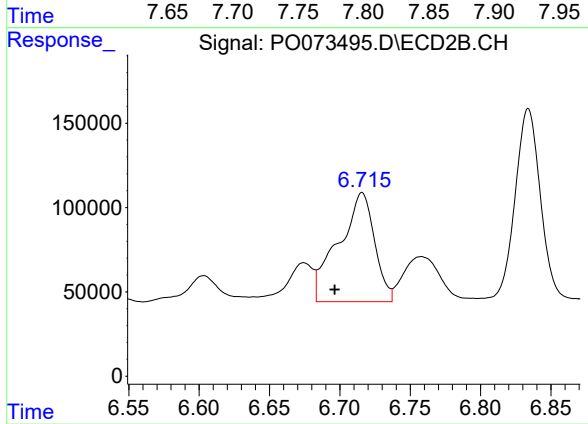
#27 AR-1254-2

R.T.: 6.279 min  
 Delta R.T.: 0.000 min  
 Response: 639831  
 Conc: 234.37 ng/ml



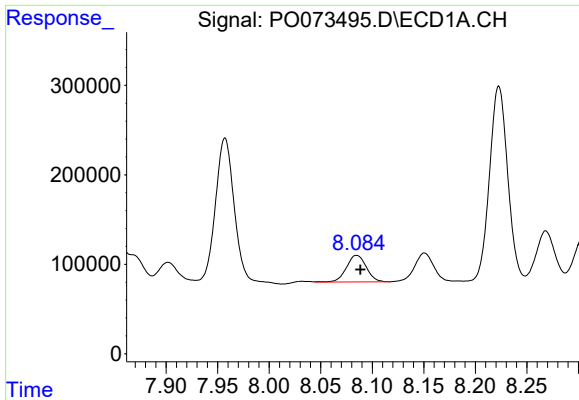
#28 AR-1254-3

R.T.: 7.790 min  
 Delta R.T.: -0.002 min  
 Response: 538105  
 Conc: 94.95 ng/ml



#28 AR-1254-3

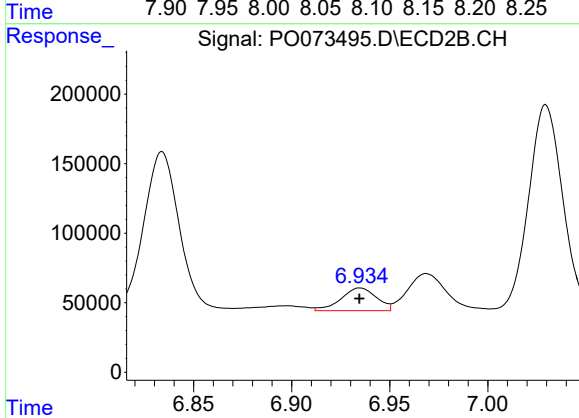
R.T.: 6.716 min  
 Delta R.T.: 0.019 min  
 Response: 1152800  
 Conc: 272.58 ng/ml



#29 AR-1254-4

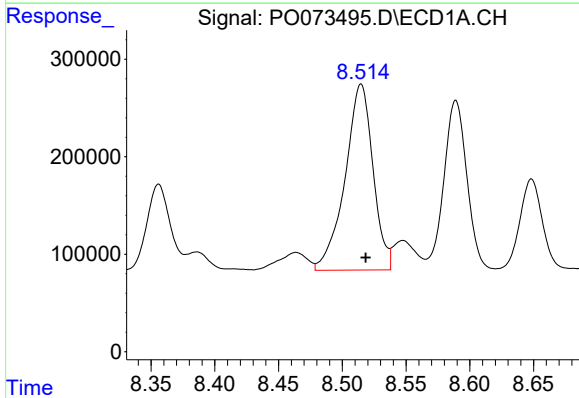
R.T.: 8.085 min  
 Delta R.T.: -0.004 min  
 Response: 398676  
 Conc: 82.40 ng/ml

Instrument :  
 ECD\_O  
 ClientSampled :



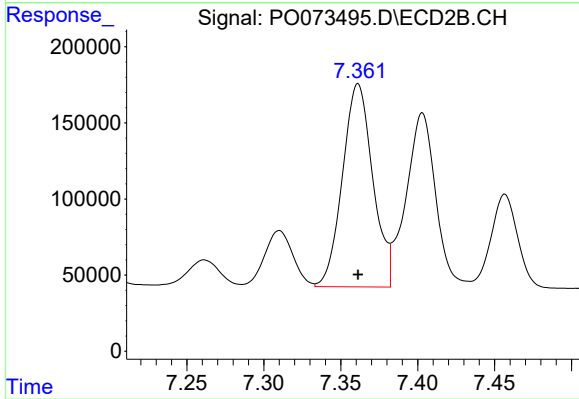
#29 AR-1254-4

R.T.: 6.935 min  
 Delta R.T.: 0.000 min  
 Response: 204953  
 Conc: 70.99 ng/ml



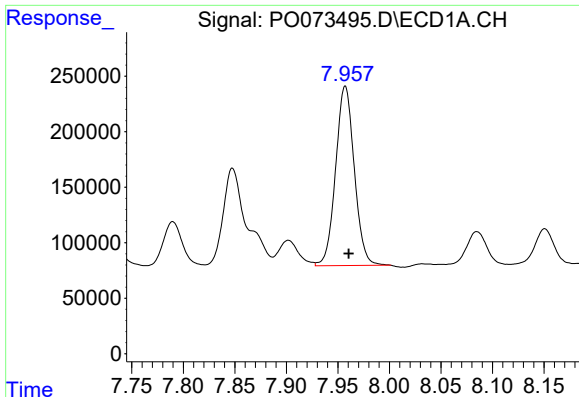
#30 AR-1254-5

R.T.: 8.515 min  
 Delta R.T.: -0.004 min  
 Response: 2909981  
 Conc: 611.29 ng/ml



#30 AR-1254-5

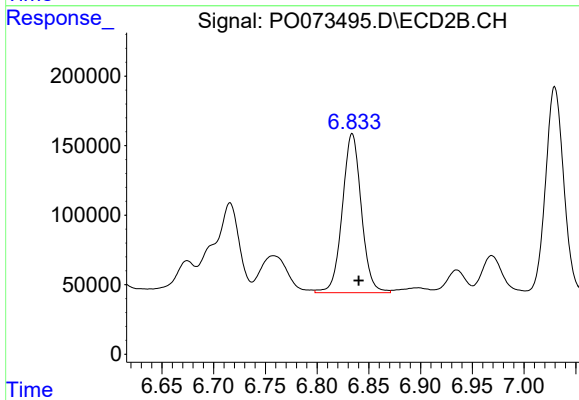
R.T.: 7.361 min  
 Delta R.T.: 0.000 min  
 Response: 1826964  
 Conc: 494.69 ng/ml



#31 AR-1260-1

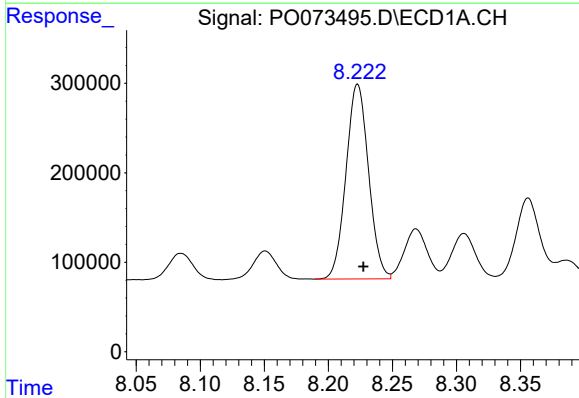
R.T.: 7.957 min  
 Delta R.T.: -0.003 min  
 Response: 2042591  
 Conc: 506.19 ng/ml

Instrument :  
 ECD\_O  
 ClientSampled :



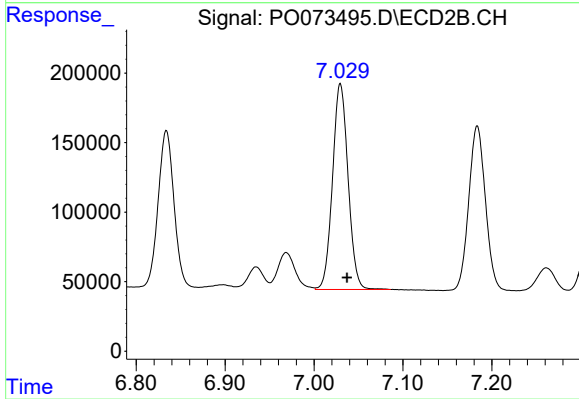
#31 AR-1260-1

R.T.: 6.834 min  
 Delta R.T.: -0.006 min  
 Response: 1465725  
 Conc: 545.53 ng/ml



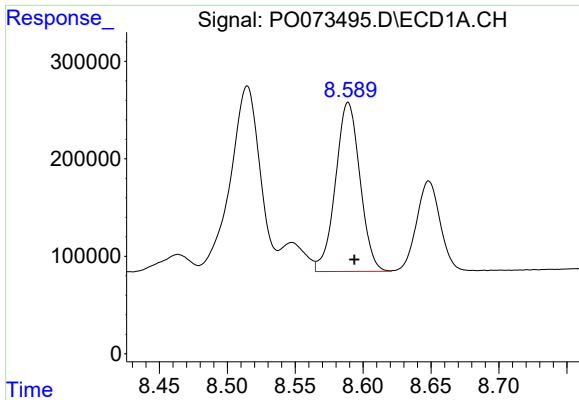
#32 AR-1260-2

R.T.: 8.223 min  
 Delta R.T.: -0.004 min  
 Response: 2668599  
 Conc: 485.57 ng/ml



#32 AR-1260-2

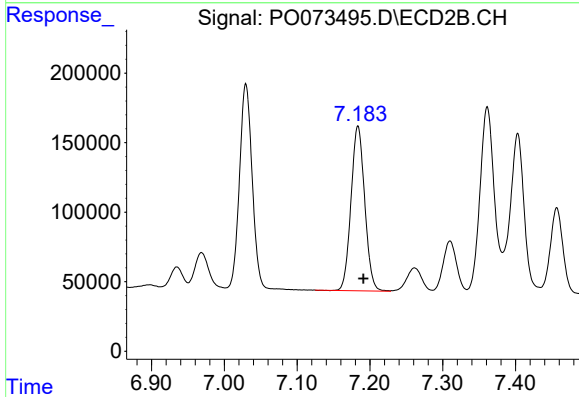
R.T.: 7.030 min  
 Delta R.T.: -0.007 min  
 Response: 1797325  
 Conc: 538.85 ng/ml



#33 AR-1260-3

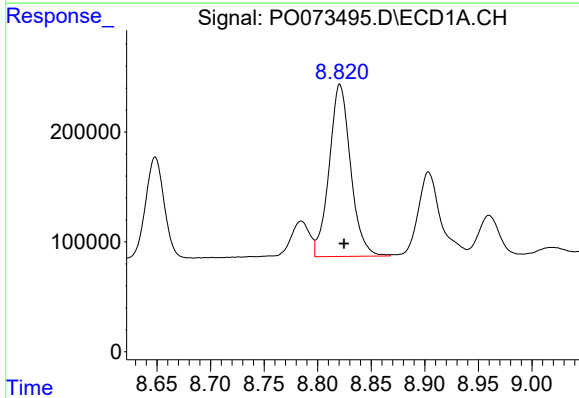
R.T.: 8.589 min  
 Delta R.T.: -0.004 min  
 Response: 2173953  
 Conc: 489.90 ng/ml

Instrument :  
 ECD\_O  
 ClientSampled :



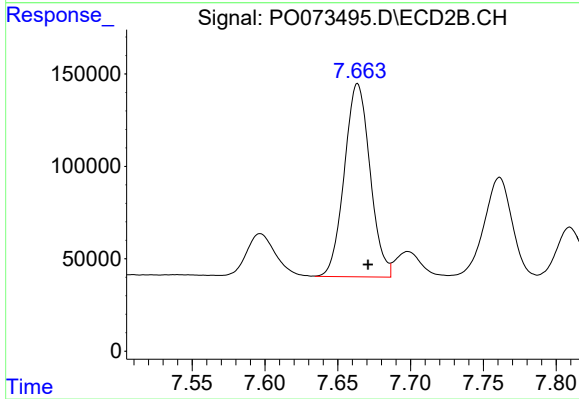
#33 AR-1260-3

R.T.: 7.184 min  
 Delta R.T.: -0.007 min  
 Response: 1548414  
 Conc: 501.24 ng/ml



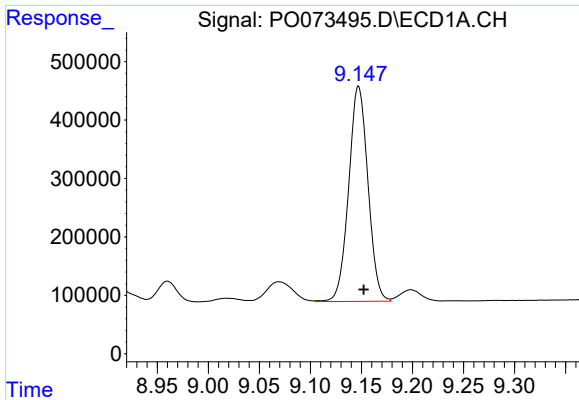
#34 AR-1260-4

R.T.: 8.821 min  
 Delta R.T.: -0.004 min  
 Response: 2184845  
 Conc: 506.20 ng/ml



#34 AR-1260-4

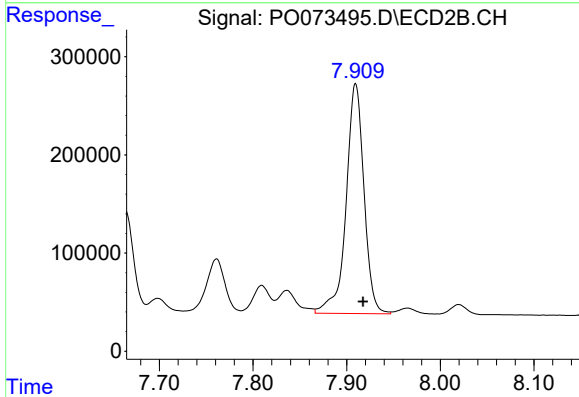
R.T.: 7.664 min  
 Delta R.T.: -0.007 min  
 Response: 1284800  
 Conc: 522.11 ng/ml



#35 AR-1260-5

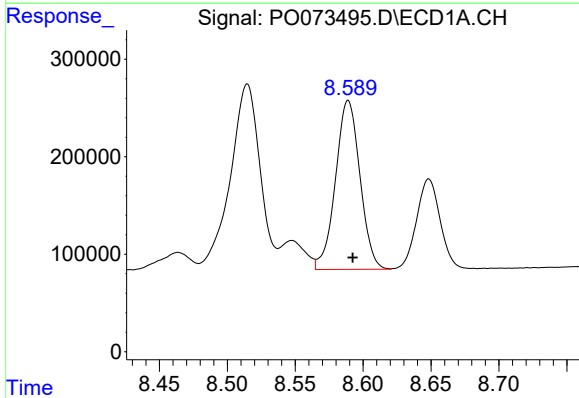
R.T.: 9.147 min  
 Delta R.T.: -0.005 min  
 Response: 4839856  
 Conc: 490.12 ng/ml

Instrument :  
 ECD\_O  
 ClientSampleId :



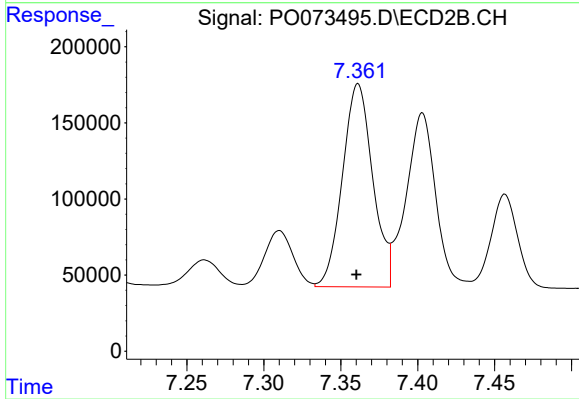
#35 AR-1260-5

R.T.: 7.910 min  
 Delta R.T.: -0.008 min  
 Response: 3113603  
 Conc: 502.59 ng/ml



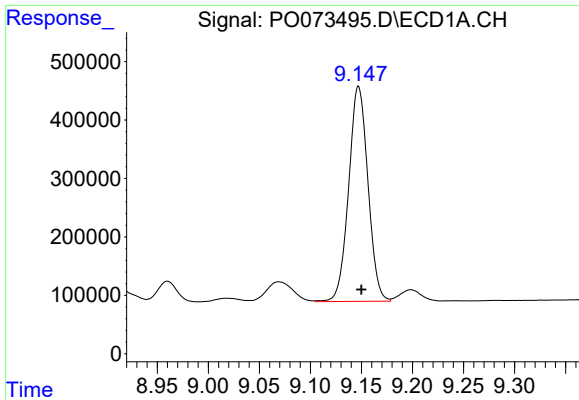
#36 AR-1262-1

R.T.: 8.589 min  
 Delta R.T.: -0.003 min  
 Response: 2173953  
 Conc: 348.20 ng/ml



#36 AR-1262-1

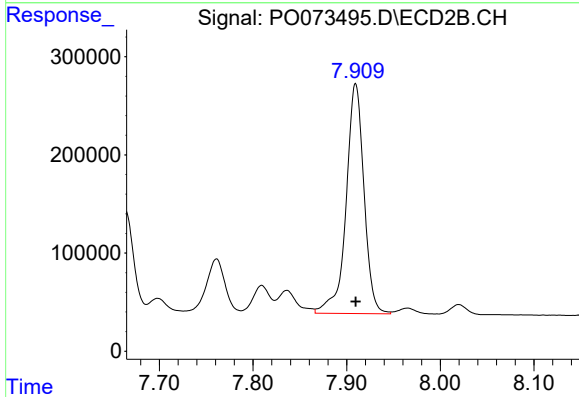
R.T.: 7.361 min  
 Delta R.T.: 0.000 min  
 Response: 1826964  
 Conc: 942.74 ng/ml



#37 AR-1262-2

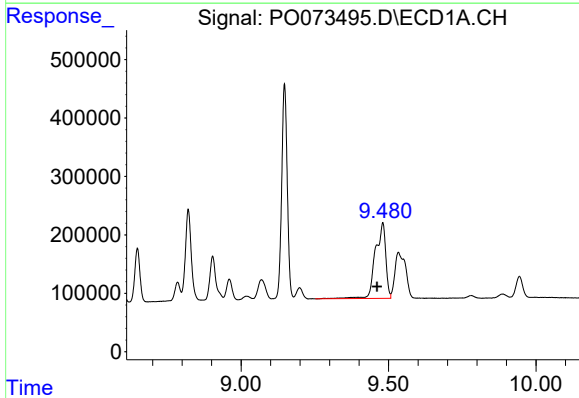
R.T.: 9.147 min  
 Delta R.T.: -0.003 min  
 Response: 4839856  
 Conc: 447.42 ng/ml

Instrument :  
 ECD\_O  
 ClientSampleId :



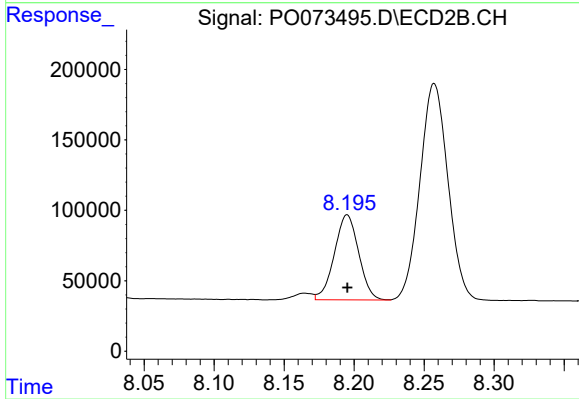
#37 AR-1262-2

R.T.: 7.910 min  
 Delta R.T.: 0.000 min  
 Response: 3113603  
 Conc: 474.89 ng/ml



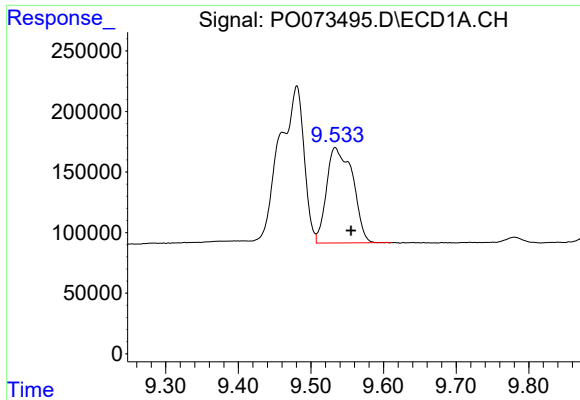
#38 AR-1262-3

R.T.: 9.480 min  
 Delta R.T.: 0.019 min  
 Response: 3181462  
 Conc: 433.44 ng/ml



#38 AR-1262-3

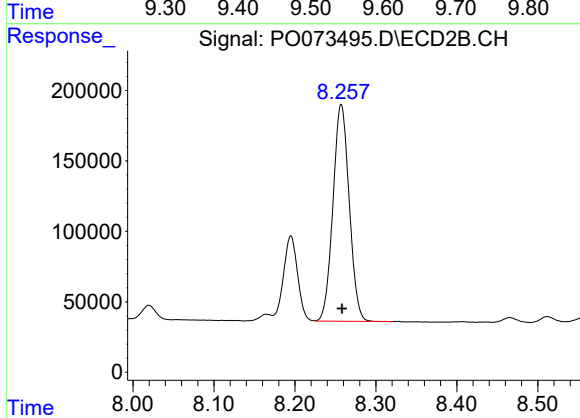
R.T.: 8.195 min  
 Delta R.T.: 0.000 min  
 Response: 731796  
 Conc: 271.22 ng/ml



#39 AR-1262-4

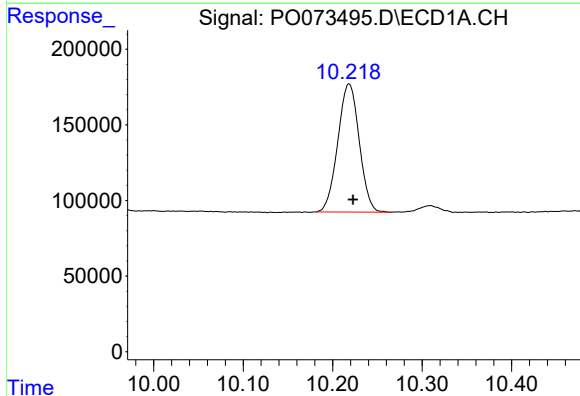
R.T.: 9.534 min  
 Delta R.T.: -0.022 min  
 Response: 1965004  
 Conc: 357.08 ng/ml

Instrument :  
 ECD\_O  
 ClientSampled :



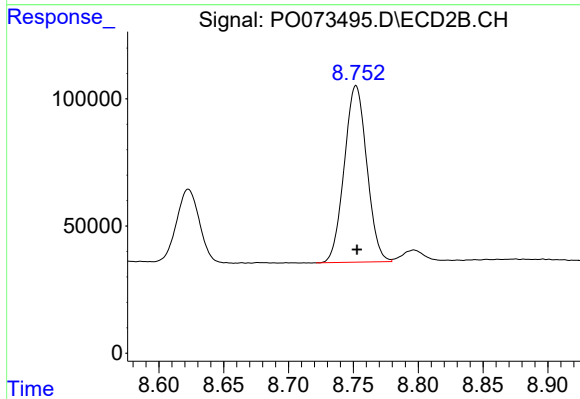
#39 AR-1262-4

R.T.: 8.257 min  
 Delta R.T.: -0.001 min  
 Response: 2147214  
 Conc: 449.71 ng/ml



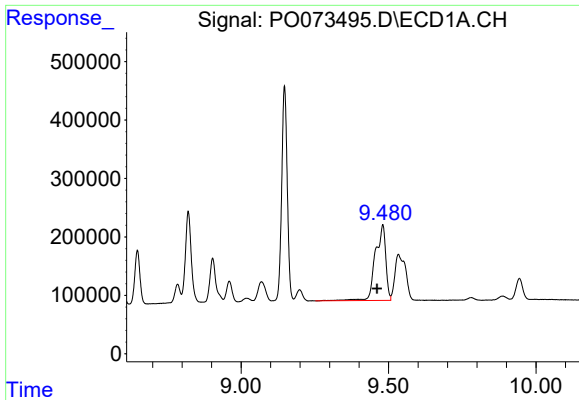
#40 AR-1262-5

R.T.: 10.218 min  
 Delta R.T.: -0.004 min  
 Response: 1407842  
 Conc: 361.69 ng/ml



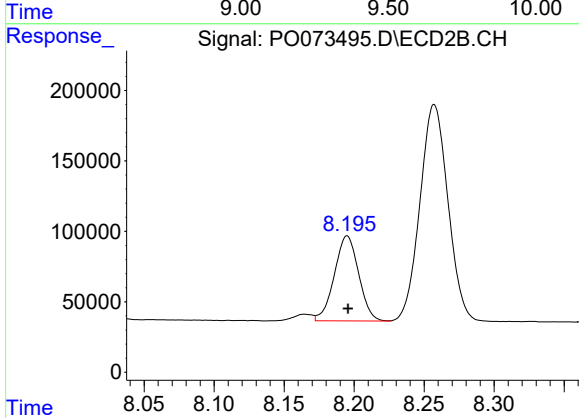
#40 AR-1262-5

R.T.: 8.752 min  
 Delta R.T.: 0.000 min  
 Response: 839202  
 Conc: 366.93 ng/ml

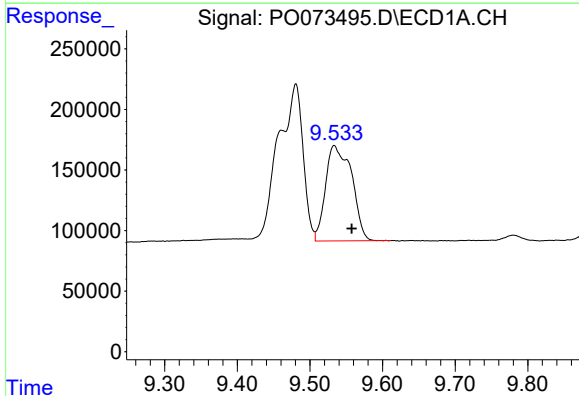


#41 AR-1268-1  
 R.T.: 9.480 min  
 Delta R.T.: 0.019 min  
 Response: 3181462  
 Conc: 227.76 ng/ml

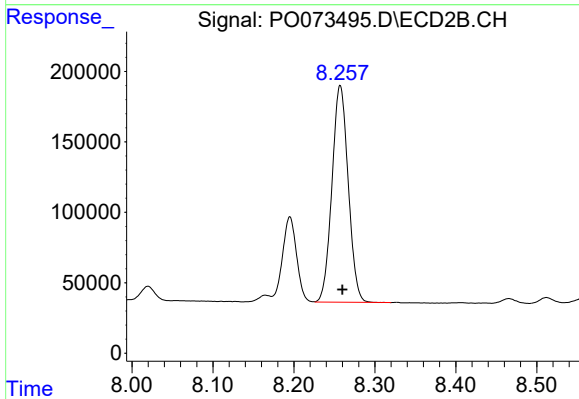
Instrument :  
 ECD\_O  
 ClientSampleId :



#41 AR-1268-1  
 R.T.: 8.195 min  
 Delta R.T.: 0.000 min  
 Response: 731796  
 Conc: 89.83 ng/ml

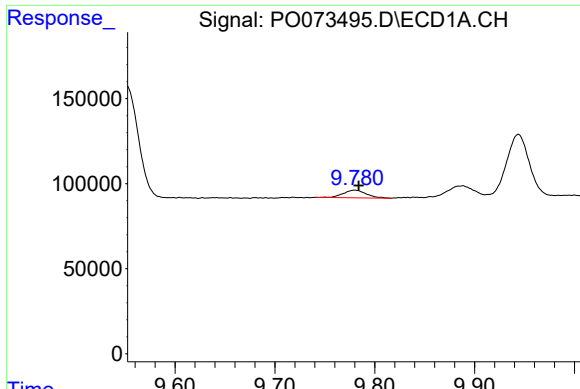


#42 AR-1268-2  
 R.T.: 9.534 min  
 Delta R.T.: -0.024 min  
 Response: 1965004  
 Conc: 161.75 ng/ml



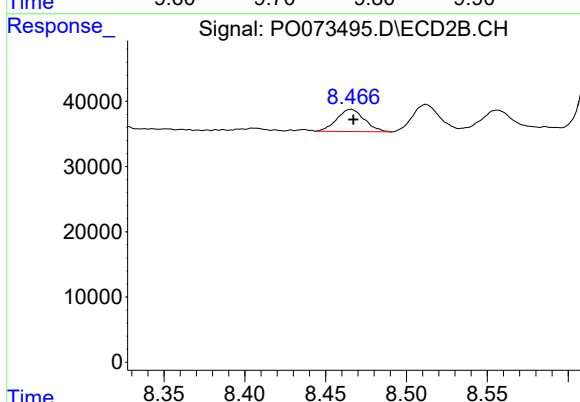
#42 AR-1268-2  
 R.T.: 8.257 min  
 Delta R.T.: -0.003 min  
 Response: 2147214  
 Conc: 293.99 ng/ml



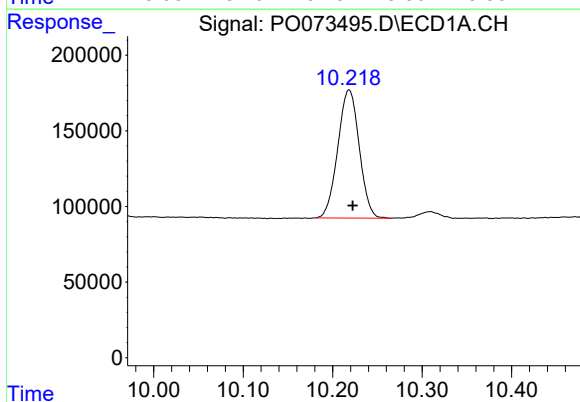


#43 AR-1268-3  
 R.T.: 9.780 min  
 Delta R.T.: -0.004 min  
 Response: 72438  
 Conc: 6.88 ng/ml

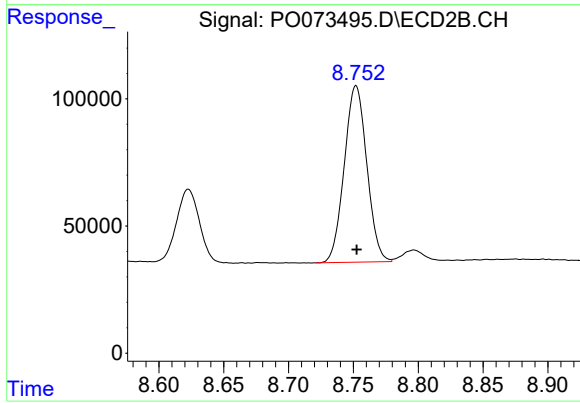
Instrument :  
 ECD\_O  
 ClientSampled :



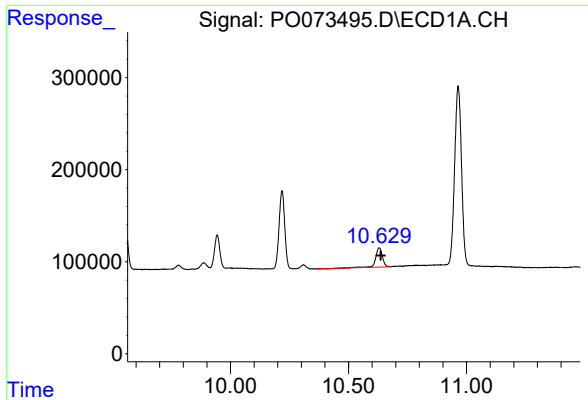
#43 AR-1268-3  
 R.T.: 8.466 min  
 Delta R.T.: -0.002 min  
 Response: 40345  
 Conc: 6.45 ng/ml



#44 AR-1268-4  
 R.T.: 10.218 min  
 Delta R.T.: -0.004 min  
 Response: 1407842  
 Conc: 312.07 ng/ml



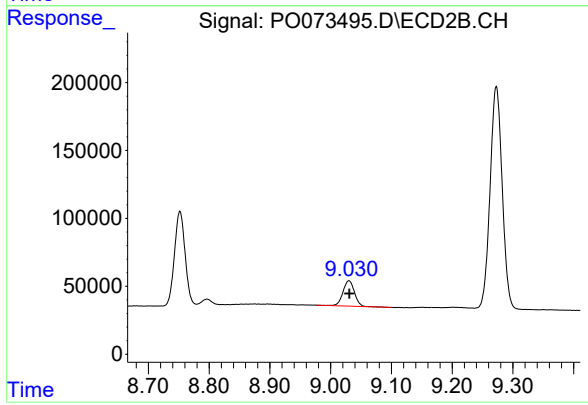
#44 AR-1268-4  
 R.T.: 8.752 min  
 Delta R.T.: 0.000 min  
 Response: 839202  
 Conc: 313.30 ng/ml



#45 AR-1268-5

R.T.: 10.630 min  
Delta R.T.: -0.006 min  
Response: 410087  
Conc: 12.88 ng/ml

Instrument :  
ECD\_O  
ClientSampleId :



#45 AR-1268-5

R.T.: 9.030 min  
Delta R.T.: -0.001 min  
Response: 244944  
Conc: 13.43 ng/ml