

Data Path : Z:\pestpcbsrv\HPCHEM1\ECD_0\Data\PO112420\
 Data File : PO073501.D
 Signal(s) : Signal #1: ECD1A.CH Signal #2: ECD2B.CH
 Acq On : 24 Nov 2020 10:56
 Operator : DD\AJ
 Sample : L4836-01
 Misc :
 ALS Vial : 8 Sample Multiplier: 1

Instrument :
 ECD_O
 ClientSampled :
 SB-01

Integration File signal 1: autoint1.e
 Integration File signal 2: autoint2.e
 Quant Time: Nov 25 10:27:35 2020
 Quant Method : Z:\pestpcbsrv\HPCHEM1\ECD_0\methods\PO112320.M
 Quant Title : GC EXTRACTABLES
 QLast Update : Wed Nov 25 10:04:26 2020
 Response via : Initial Calibration
 Integrator: ChemStation 6890 Scale Mode: Small noise peaks clipped

Volume Inj. : 2 µl
 Signal #1 Phase : ZB-MR1 Signal #2 Phase: ZB-MR2
 Signal #1 Info : 30Mx0.32mmx 0.50µ Signal #2 Info : 30M x 0.32mm x 0.25µm

Compound	RT#1	RT#2	Resp#1	Resp#2	ng/ml	ng/ml
System Monitoring Compounds						
1) SA Tetrachlo...	4.942	4.007	1588931	1191523	18.995	24.303 #
2) SA Decachlor...	10.964	9.273	1747678	915307	21.197	19.963
Target Compounds						
3) L1 AR-1016-1	6.260	5.237f	189472	41755	57.538	20.496 #
4) L1 AR-1016-2	6.319f	0.000	48357	0	10.504	N.D. #
5) L1 AR-1016-3	6.351	5.479	39890	153024	14.568	102.906 #
7) L1 AR-1016-5	6.770	5.740	626087	166884	278.465	110.864 #
8) L2 AR-1221-1	5.192	4.291f	127730	185501	128.767	329.125 #
9) L2 AR-1221-2	5.298	4.369	96871	135505	137.732	335.212 #
10) L2 AR-1221-3	5.407f	0.000	619925	0	276.492	N.D. #
11) L3 AR-1232-1	5.407f	0.000	619925	0	335.915	N.D. #
12) L3 AR-1232-2	5.975	0.000	291713	0	306.541	N.D. #
13) L3 AR-1232-3	6.319f	5.479	48357	153024	24.721	243.934 #
14) L3 AR-1232-4	0.000	5.574	0	100673	N.D.	186.732 #
15) L3 AR-1232-5	6.566	5.740	108292	166884	160.850	282.482 #
16) L4 AR-1242-1	6.260	5.237f	189472	41755	71.839	25.530 #
17) L4 AR-1242-2	6.319f	0.000	48357	0	13.229	N.D. #
18) L4 AR-1242-3	6.351	5.479	39890	153024	18.088	127.455 #
19) L4 AR-1242-4	6.499f	5.574	295558	100673	159.232	91.596 #
20) L4 AR-1242-5	7.271f	6.123	607153	123368	288.659	79.676 #
21) L5 AR-1248-1	6.260	5.237f	189472	41755	94.778	33.295 #
22) L5 AR-1248-2	6.566	0.000	108292	0	41.889	N.D. #
23) L5 AR-1248-3	6.770	5.574	626087	100673	204.299	58.995 #
24) L5 AR-1248-4	7.215	5.740	145690	166884	39.056	81.181 #
25) L5 AR-1248-5	7.271f	6.145f	607153	161722	169.693	72.830 #
26) L6 AR-1254-1	7.181	6.123	478373	123368	138.325	39.620 #
27) L6 AR-1254-2	7.409	6.280	592578	98855	108.771	36.211 #
28) L6 AR-1254-3	7.795	6.697	480577	340130	84.799	80.424
29) L6 AR-1254-4	8.087	6.934	197130	81851	40.745	28.351 #
30) L6 AR-1254-5	8.542f	7.363	4874829	2880281	1024.045	779.895
31) L7 AR-1260-1	7.957	6.833	921015	442749	228.243	164.788 #
32) L7 AR-1260-2	8.221	7.037	829740	538957	150.975	161.583
33) L7 AR-1260-3	8.590	7.184	597526	395925	134.653	128.166
34) L7 AR-1260-4	8.820	7.664	633221	293198	146.709	119.148
35) L7 AR-1260-5	9.148	7.910	1289019	755914	130.535	122.019
36) L8 AR-1262-1	8.590	7.363	597526	2880281	95.705	1486.259 #
37) L8 AR-1262-2	9.148	7.910	1289019	755914	119.163	115.294
38) L8 AR-1262-3	9.460	8.196	461745	270073	62.908	100.095 #
39) L8 AR-1262-4	9.534f	8.257	610776	610066	110.989	127.770
40) L8 AR-1262-5	10.219	8.752	322036	176940	82.735	77.365
41) L9 AR-1268-1	9.460	8.196	461745	270073	33.057	33.153
42) L9 AR-1268-2	9.534f	8.257	610776	610066	50.277	83.528 #

Data Path : Z:\pestpcbsrv\HPCHEM1\ECD_0\Data\PO112420\
 Data File : PO073501.D
 Signal(s) : Signal #1: ECD1A.CH Signal #2: ECD2B.CH
 Acq On : 24 Nov 2020 10:56
 Operator : DD\AJ
 Sample : L4836-01
 Misc :
 ALS Vial : 8 Sample Multiplier: 1

Instrument :
 ECD_0
 ClientSampleId :
 SB-01

Integration File signal 1: autoint1.e
 Integration File signal 2: autoint2.e
 Quant Time: Nov 25 10:27:35 2020
 Quant Method : Z:\pestpcbsrv\HPCHEM1\ECD_0\methods\PO112320.M
 Quant Title : GC EXTRACTABLES
 QLast Update : Wed Nov 25 10:04:26 2020
 Response via : Initial Calibration
 Integrator: ChemStation 6890 Scale Mode: Small noise peaks clipped

Volume Inj. : 2 µl
 Signal #1 Phase : ZB-MR1 Signal #2 Phase: ZB-MR2
 Signal #1 Info : 30Mx0.32mmx 0.50µ Signal #2 Info : 30M x 0.32mm x 0.25µm

	Compound	RT#1	RT#2	Resp#1	Resp#2	ng/ml	ng/ml
43)	L9 AR-1268-3	9.780	8.457	-34752	187505	N.D.	29.979 #
44)	L9 AR-1268-4	10.219	8.752	322036	176940	71.385	66.057
45)	L9 AR-1268-5	10.637	9.031	646177	186347	20.302	10.215 #

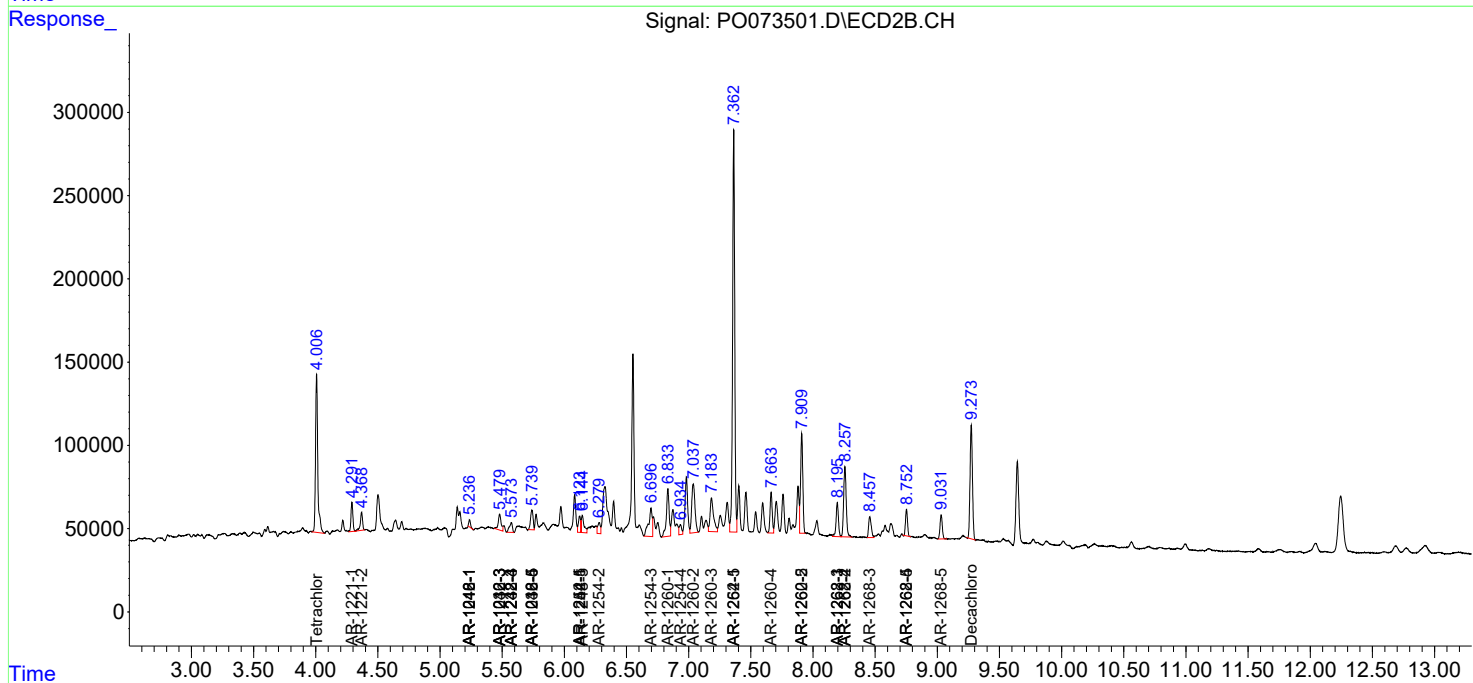
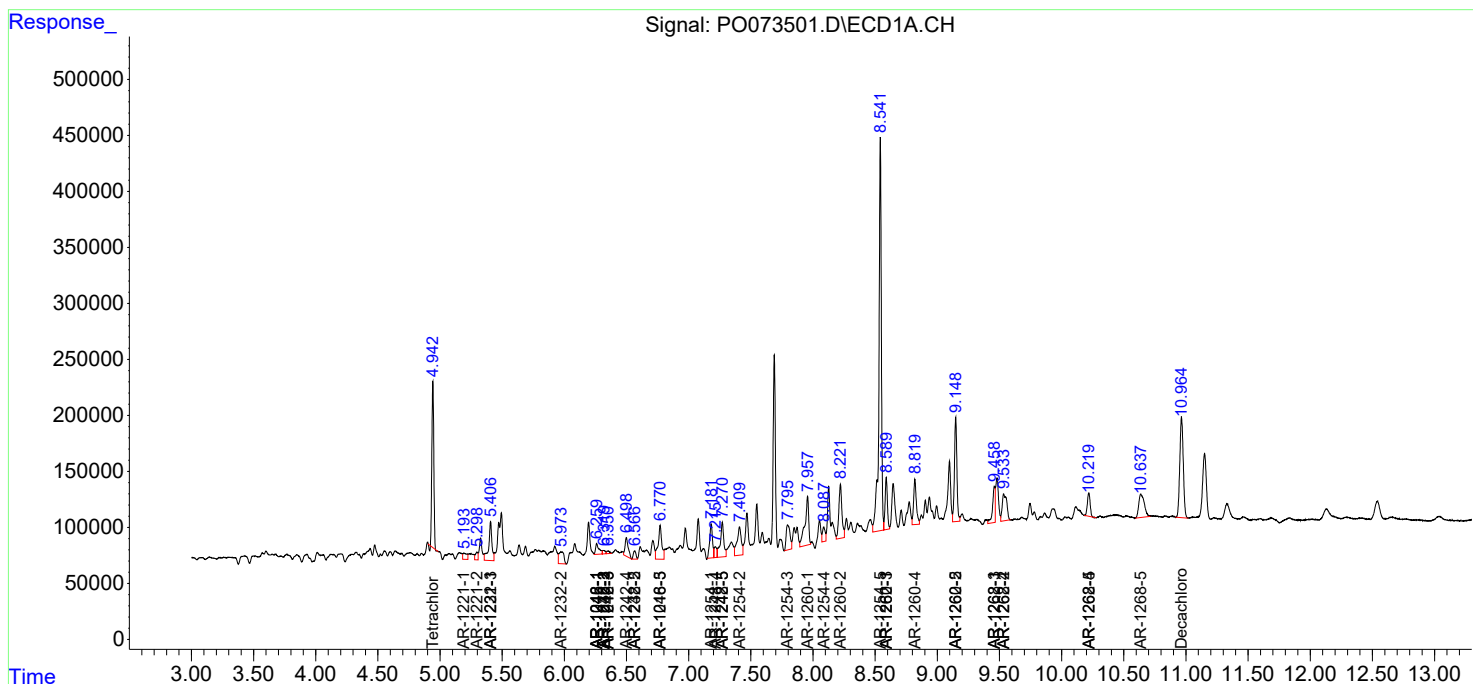
(f)=RT Delta > 1/2 Window (#)=Amounts differ by > 25% (m)=manual int.

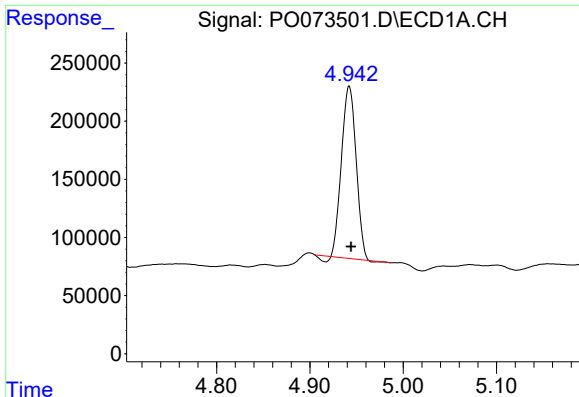
Data Path : Z:\pestpcbsrv\HPCHEM1\ECD_0\Data\PO112420\
 Data File : PO073501.D
 Signal(s) : Signal #1: ECD1A.CH Signal #2: ECD2B.CH
 Acq On : 24 Nov 2020 10:56
 Operator : DD\AJ
 Sample : L4836-01
 Misc :
 ALS Vial : 8 Sample Multiplier: 1

Instrument :
 ECD_O
 ClientSampled :
 SB-01

Integration File signal 1: autoint1.e
 Integration File signal 2: autoint2.e
 Quant Time: Nov 25 10:27:35 2020
 Quant Method : Z:\pestpcbsrv\HPCHEM1\ECD_0\methods\PO112320.M
 Quant Title : GC EXTRACTABLES
 QLast Update : Wed Nov 25 10:04:26 2020
 Response via : Initial Calibration
 Integrator: ChemStation 6890 Scale Mode: Small noise peaks clipped

Volume Inj. : 2 µl
 Signal #1 Phase : ZB-MR1 Signal #2 Phase: ZB-MR2
 Signal #1 Info : 30Mx0.32mmx 0.50µ Signal #2 Info : 30M x 0.32mm x 0.25µm

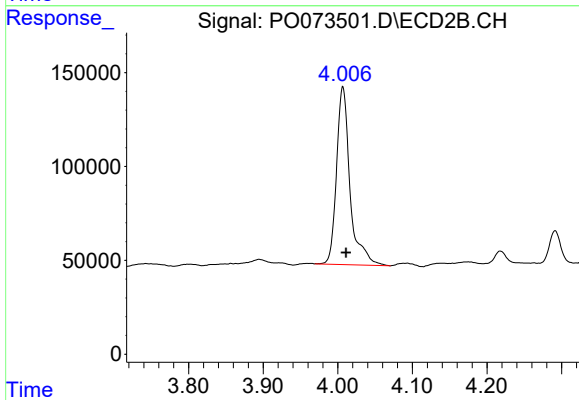




#1 Tetrachloro-m-xylene

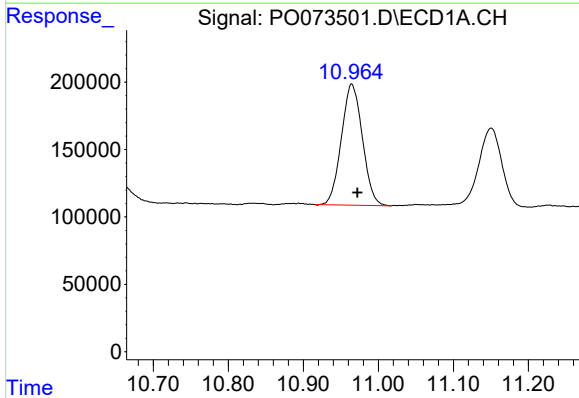
R.T.: 4.942 min
 Delta R.T.: -0.002 min
 Response: 1588931
 Conc: 18.99 ng/ml

Instrument :
 ECD_O
 ClientSampled :
 SB-01



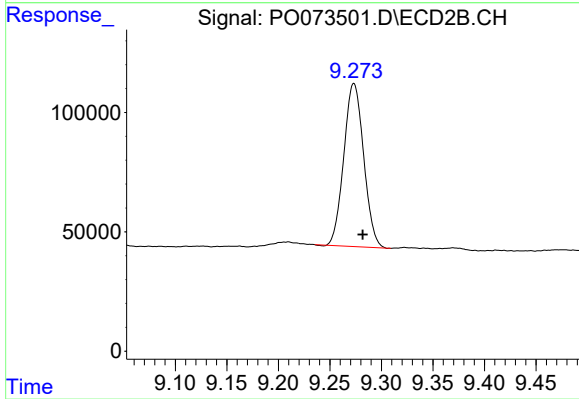
#1 Tetrachloro-m-xylene

R.T.: 4.007 min
 Delta R.T.: -0.004 min
 Response: 1191523
 Conc: 24.30 ng/ml



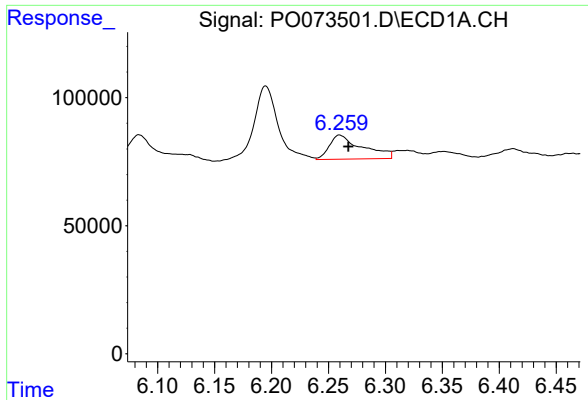
#2 Decachlorobiphenyl

R.T.: 10.964 min
 Delta R.T.: -0.007 min
 Response: 1747678
 Conc: 21.20 ng/ml



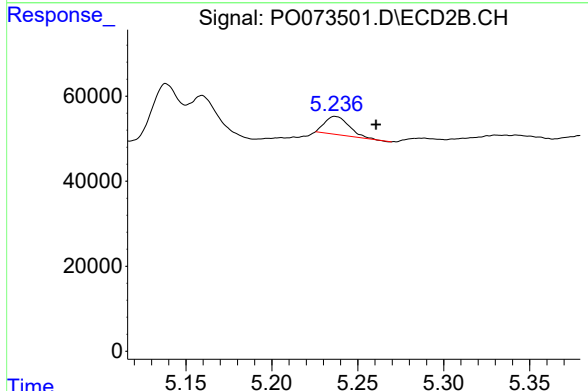
#2 Decachlorobiphenyl

R.T.: 9.273 min
 Delta R.T.: -0.009 min
 Response: 915307
 Conc: 19.96 ng/ml

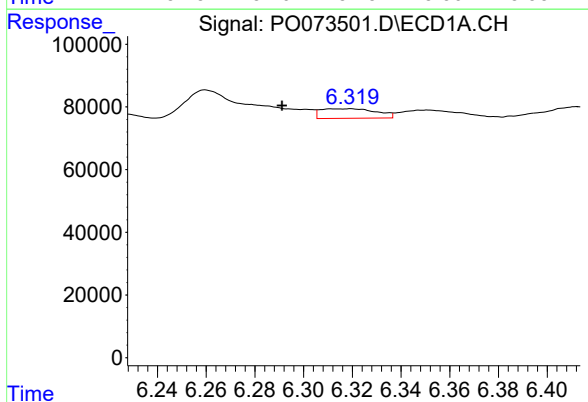


#3 AR-1016-1
 R.T.: 6.260 min
 Delta R.T.: -0.008 min
 Response: 189472
 Conc: 57.54 ng/ml

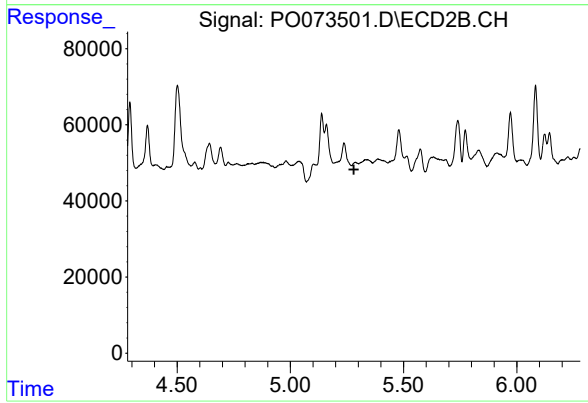
Instrument :
 ECD_O
 ClientSampleId :
 SB-01



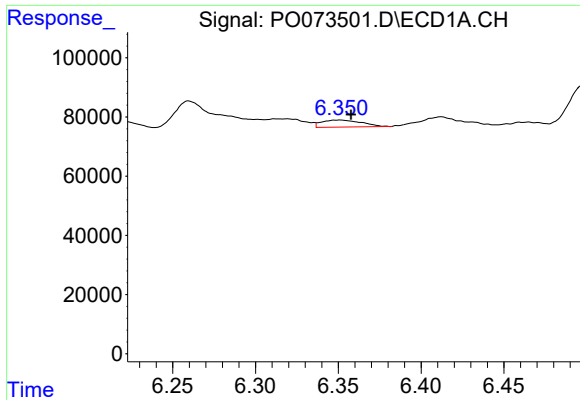
#3 AR-1016-1
 R.T.: 5.237 min
 Delta R.T.: -0.024 min
 Response: 41755
 Conc: 20.50 ng/ml



#4 AR-1016-2
 R.T.: 6.319 min
 Delta R.T.: 0.028 min
 Response: 48357
 Conc: 10.50 ng/ml

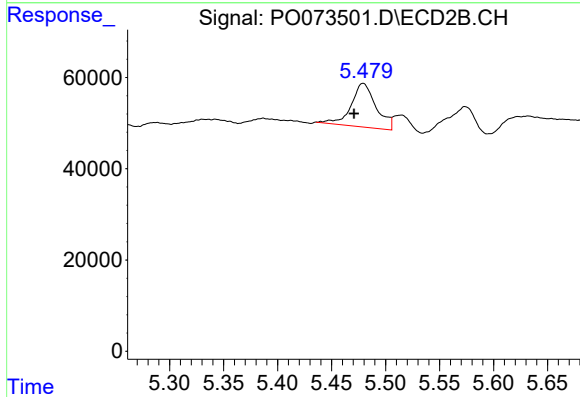


#4 AR-1016-2
 R.T.: 0.000 min
 Exp R.T.: 5.281 min
 Response: 0
 Conc: N.D.

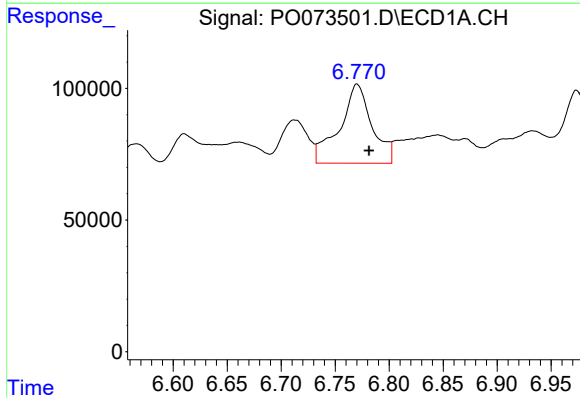


#5 AR-1016-3
 R.T.: 6.351 min
 Delta R.T.: -0.007 min
 Response: 39890
 Conc: 14.57 ng/ml

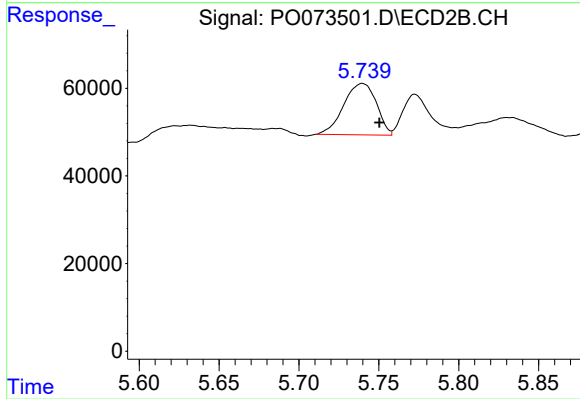
Instrument :
 ECD_O
 ClientSampled :
 SB-01



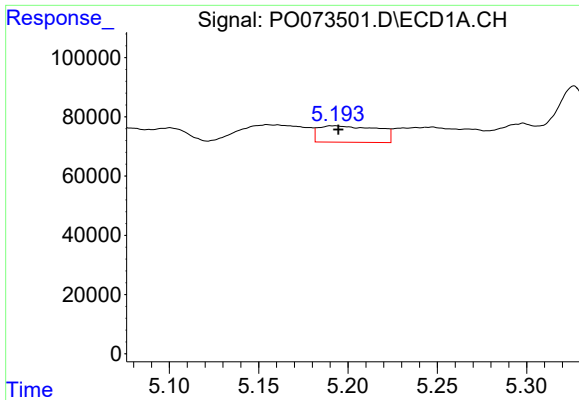
#5 AR-1016-3
 R.T.: 5.479 min
 Delta R.T.: 0.008 min
 Response: 153024
 Conc: 102.91 ng/ml



#7 AR-1016-5
 R.T.: 6.770 min
 Delta R.T.: -0.011 min
 Response: 626087
 Conc: 278.47 ng/ml

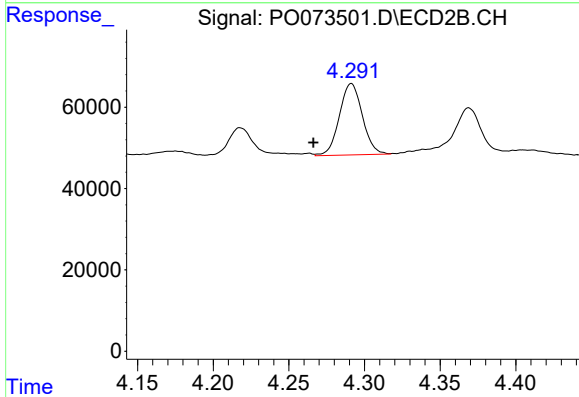


#7 AR-1016-5
 R.T.: 5.740 min
 Delta R.T.: -0.011 min
 Response: 166884
 Conc: 110.86 ng/ml

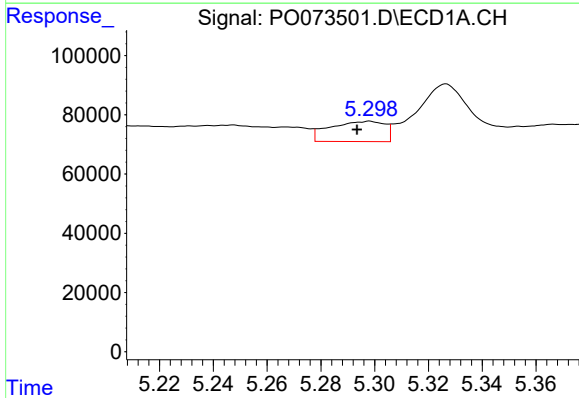


#8 AR-1221-1
 R.T.: 5.192 min
 Delta R.T.: -0.003 min
 Response: 127730
 Conc: 128.77 ng/ml

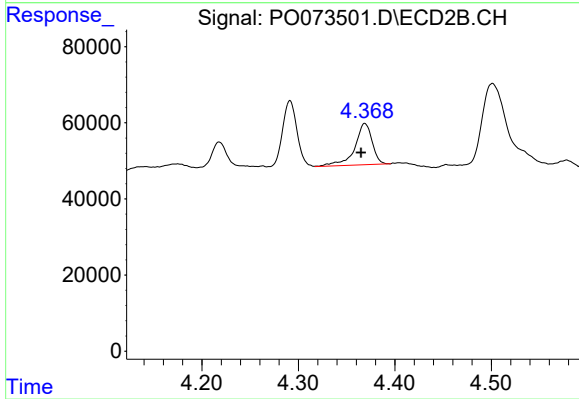
Instrument :
 ECD_O
 ClientSampleId :
 SB-01



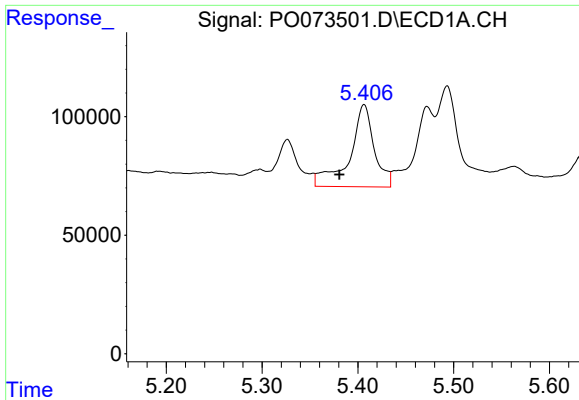
#8 AR-1221-1
 R.T.: 4.291 min
 Delta R.T.: 0.025 min
 Response: 185501
 Conc: 329.13 ng/ml



#9 AR-1221-2
 R.T.: 5.298 min
 Delta R.T.: 0.005 min
 Response: 96871
 Conc: 137.73 ng/ml



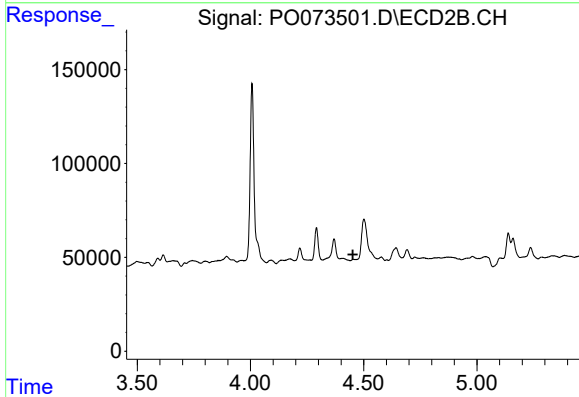
#9 AR-1221-2
 R.T.: 4.369 min
 Delta R.T.: 0.004 min
 Response: 135505
 Conc: 335.21 ng/ml



#10 AR-1221-3

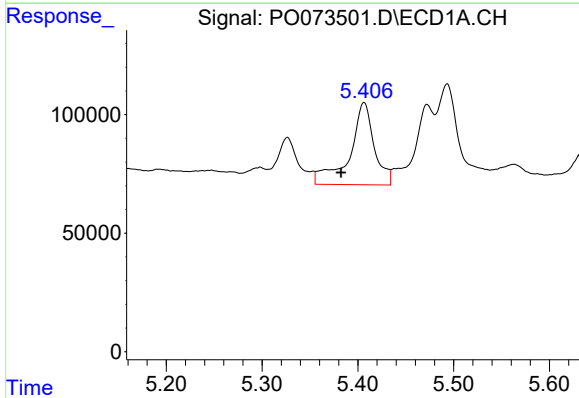
R.T.: 5.407 min
 Delta R.T.: 0.026 min
 Response: 619925
 Conc: 276.49 ng/ml

Instrument :
 ECD_O
 ClientSampled :
 SB-01



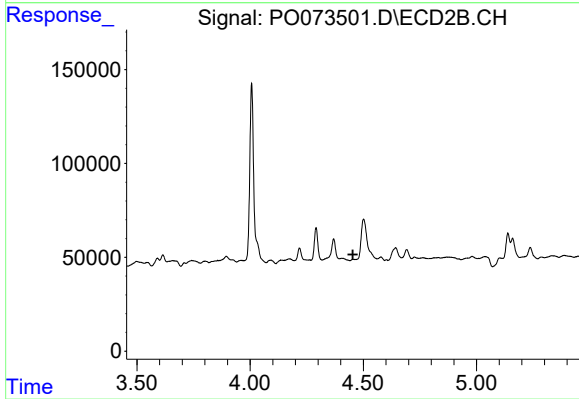
#10 AR-1221-3

R.T.: 0.000 min
 Exp R.T. : 4.453 min
 Response: 0
 Conc: N.D.



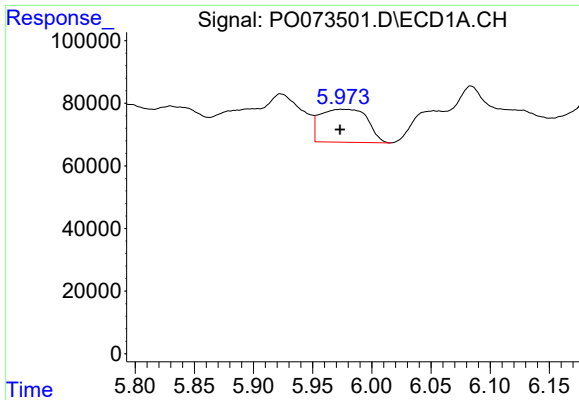
#11 AR-1232-1

R.T.: 5.407 min
 Delta R.T.: 0.024 min
 Response: 619925
 Conc: 335.92 ng/ml



#11 AR-1232-1

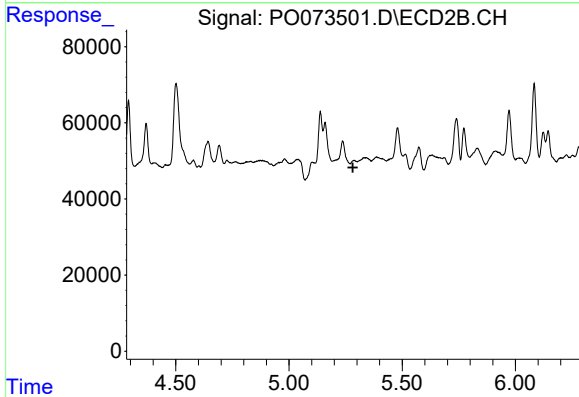
R.T.: 0.000 min
 Exp R.T. : 4.454 min
 Response: 0
 Conc: N.D.



#12 AR-1232-2

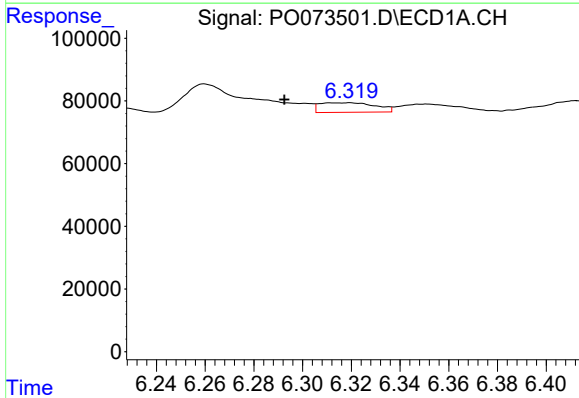
R.T.: 5.975 min
 Delta R.T.: 0.001 min
 Response: 291713
 Conc: 306.54 ng/ml

Instrument :
 ECD_O
 ClientSampled :
 SB-01



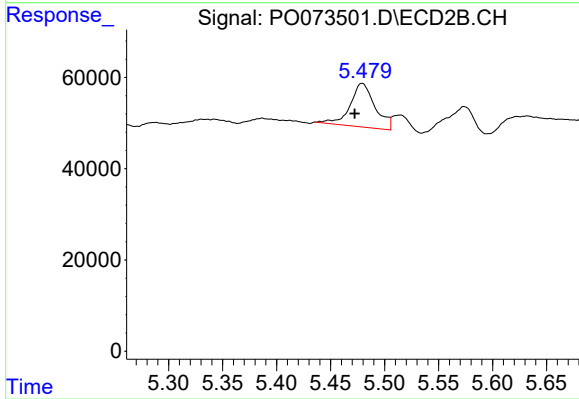
#12 AR-1232-2

R.T.: 0.000 min
 Exp R.T. : 5.282 min
 Response: 0
 Conc: N.D.



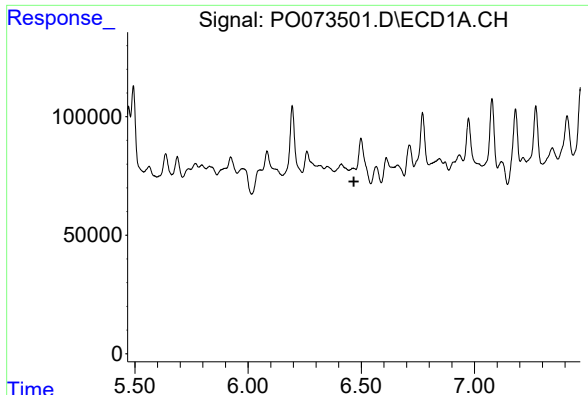
#13 AR-1232-3

R.T.: 6.319 min
 Delta R.T.: 0.026 min
 Response: 48357
 Conc: 24.72 ng/ml



#13 AR-1232-3

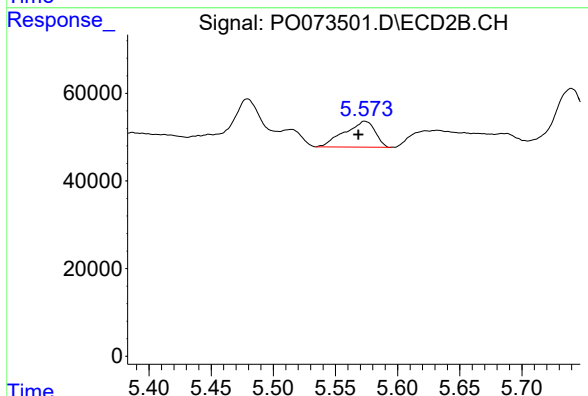
R.T.: 5.479 min
 Delta R.T.: 0.007 min
 Response: 153024
 Conc: 243.93 ng/ml



#14 AR-1232-4

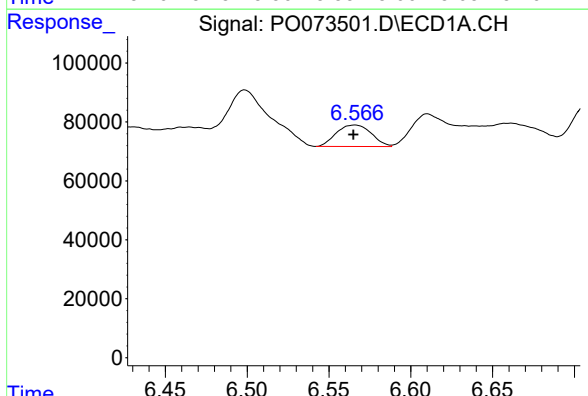
R.T.: 0.000 min
 Exp R.T.: 6.467 min
 Response: 0
 Conc: N.D.

Instrument :
 ECD_O
 ClientSampled :
 SB-01



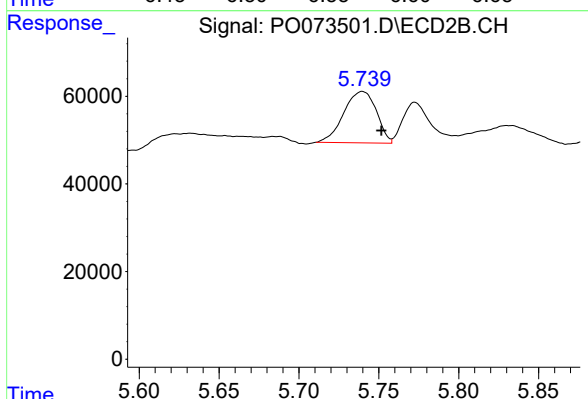
#14 AR-1232-4

R.T.: 5.574 min
 Delta R.T.: 0.005 min
 Response: 100673
 Conc: 186.73 ng/ml



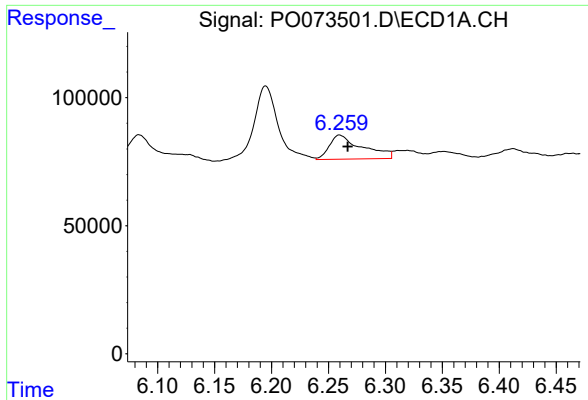
#15 AR-1232-5

R.T.: 6.566 min
 Delta R.T.: 0.000 min
 Response: 108292
 Conc: 160.85 ng/ml



#15 AR-1232-5

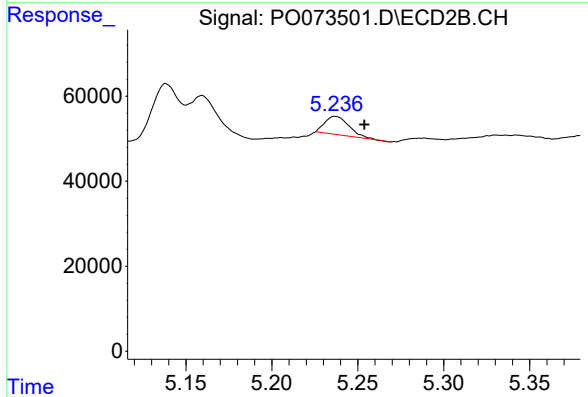
R.T.: 5.740 min
 Delta R.T.: -0.012 min
 Response: 166884
 Conc: 282.48 ng/ml



#16 AR-1242-1

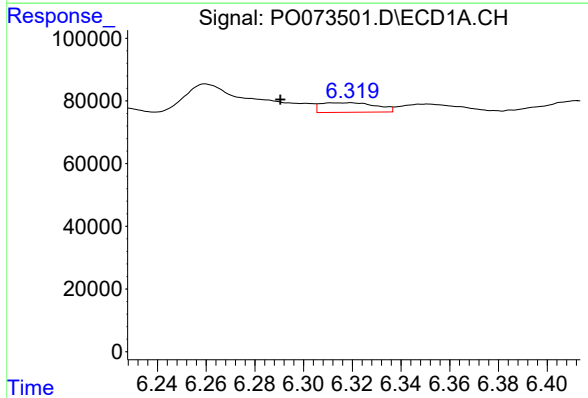
R.T.: 6.260 min
 Delta R.T.: -0.007 min
 Response: 189472
 Conc: 71.84 ng/ml

Instrument :
 ECD_O
 ClientSampled :
 SB-01



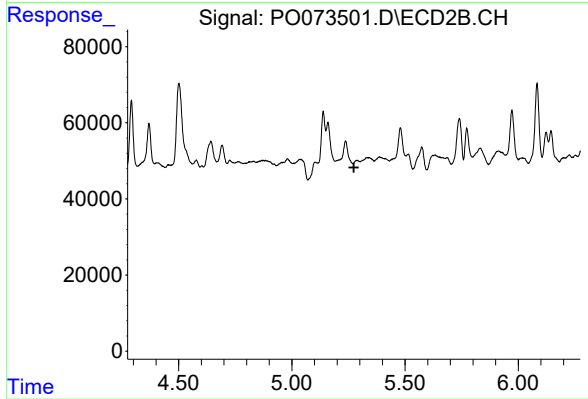
#16 AR-1242-1

R.T.: 5.237 min
 Delta R.T.: -0.017 min
 Response: 41755
 Conc: 25.53 ng/ml



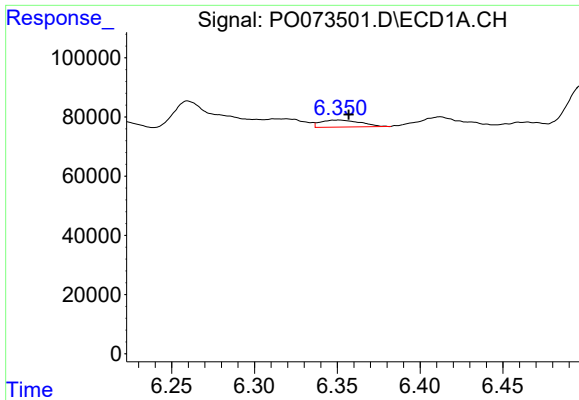
#17 AR-1242-2

R.T.: 6.319 min
 Delta R.T.: 0.028 min
 Response: 48357
 Conc: 13.23 ng/ml



#17 AR-1242-2

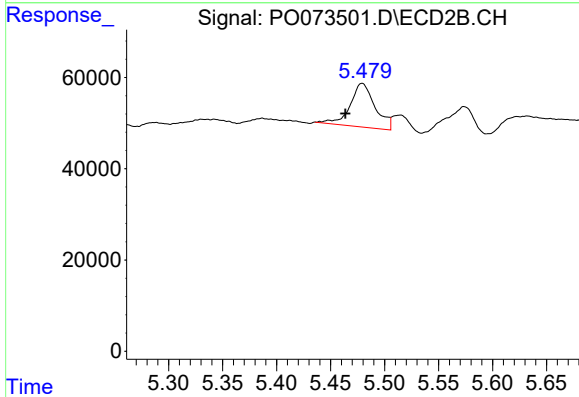
R.T.: 0.000 min
 Exp R.T.: 5.274 min
 Response: 0
 Conc: N.D.



#18 AR-1242-3

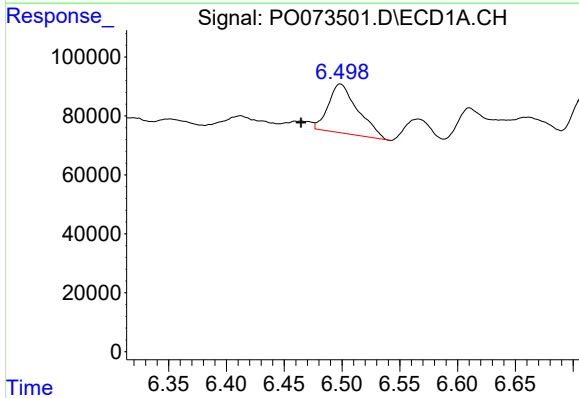
R.T.: 6.351 min
 Delta R.T.: -0.006 min
 Response: 39890
 Conc: 18.09 ng/ml

Instrument :
 ECD_O
ClientSampleId :
 SB-01



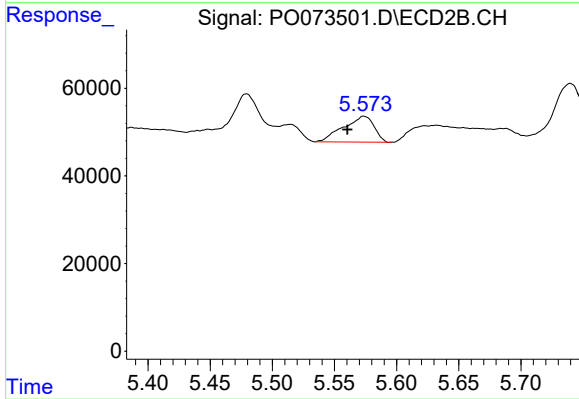
#18 AR-1242-3

R.T.: 5.479 min
 Delta R.T.: 0.015 min
 Response: 153024
 Conc: 127.46 ng/ml



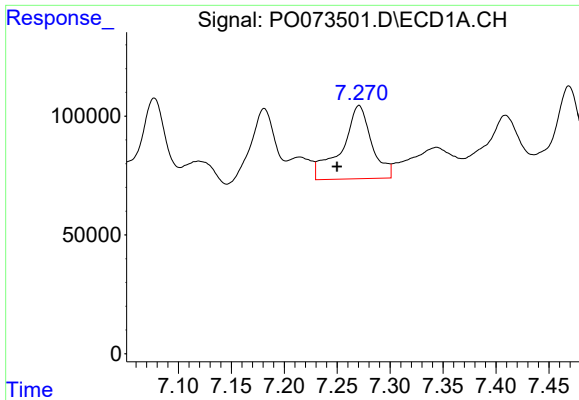
#19 AR-1242-4

R.T.: 6.499 min
 Delta R.T.: 0.034 min
 Response: 295558
 Conc: 159.23 ng/ml



#19 AR-1242-4

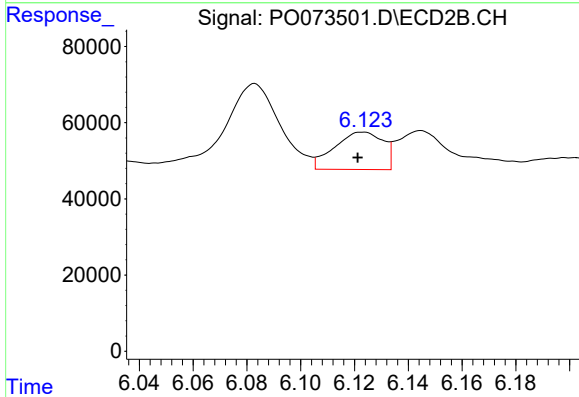
R.T.: 5.574 min
 Delta R.T.: 0.013 min
 Response: 100673
 Conc: 91.60 ng/ml



#20 AR-1242-5

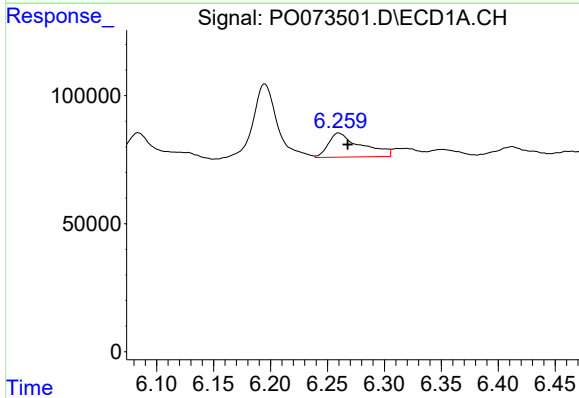
R.T.: 7.271 min
 Delta R.T.: 0.021 min
 Response: 607153
 Conc: 288.66 ng/ml

Instrument :
 ECD_O
 ClientSampled :
 SB-01



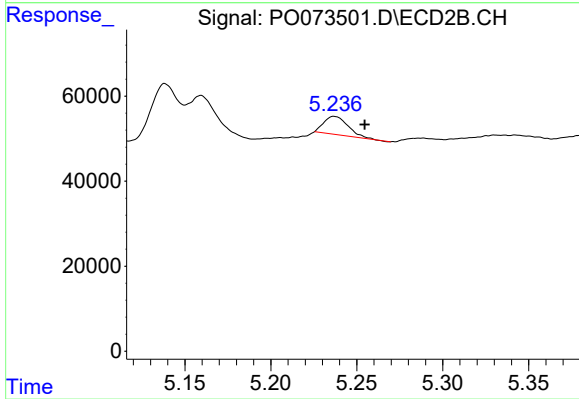
#20 AR-1242-5

R.T.: 6.123 min
 Delta R.T.: 0.002 min
 Response: 123368
 Conc: 79.68 ng/ml



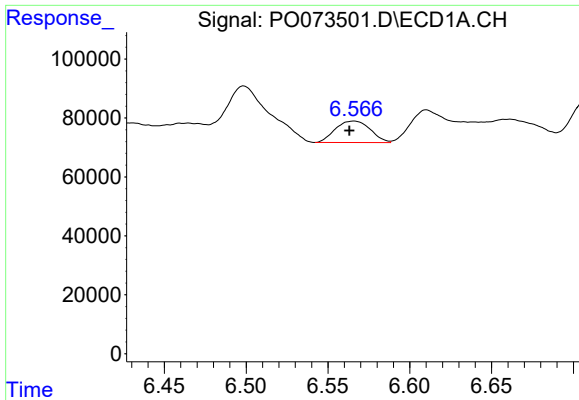
#21 AR-1248-1

R.T.: 6.260 min
 Delta R.T.: -0.008 min
 Response: 189472
 Conc: 94.78 ng/ml



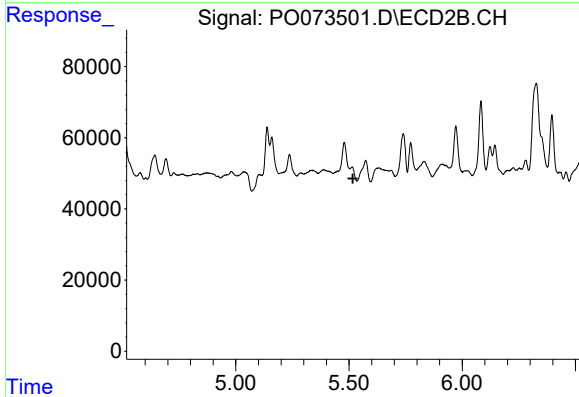
#21 AR-1248-1

R.T.: 5.237 min
 Delta R.T.: -0.018 min
 Response: 41755
 Conc: 33.30 ng/ml

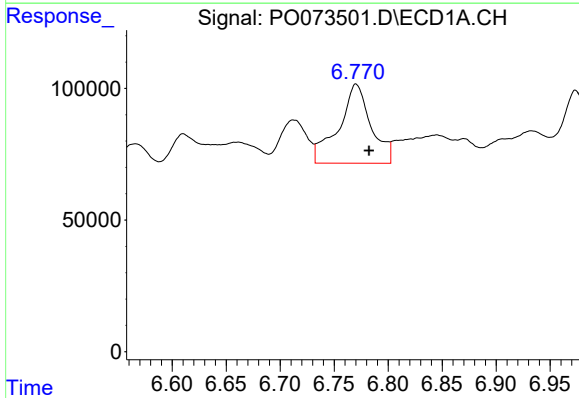


#22 AR-1248-2
 R.T.: 6.566 min
 Delta R.T.: 0.003 min
 Response: 108292
 Conc: 41.89 ng/ml

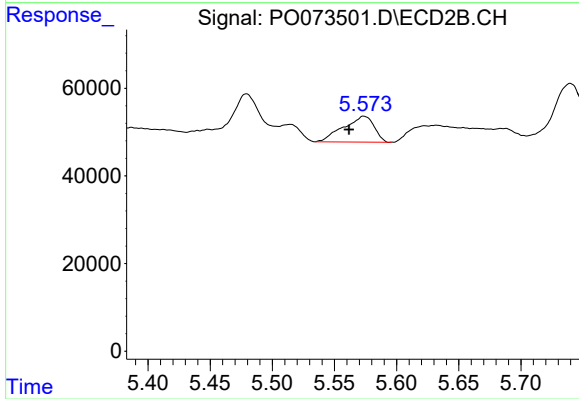
Instrument :
 ECD_O
 ClientSampled :
 SB-01



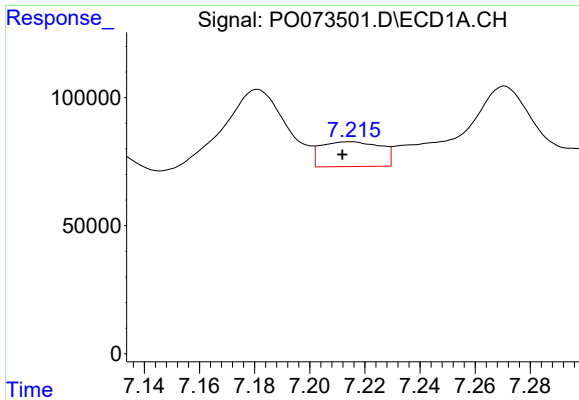
#22 AR-1248-2
 R.T.: 0.000 min
 Exp R.T. : 5.517 min
 Response: 0
 Conc: N.D.



#23 AR-1248-3
 R.T.: 6.770 min
 Delta R.T.: -0.012 min
 Response: 626087
 Conc: 204.30 ng/ml

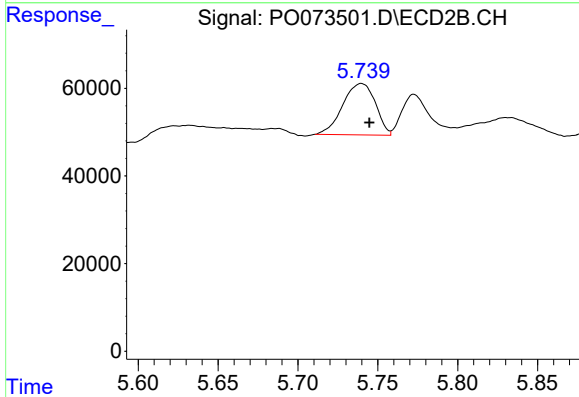


#23 AR-1248-3
 R.T.: 5.574 min
 Delta R.T.: 0.012 min
 Response: 100673
 Conc: 58.99 ng/ml

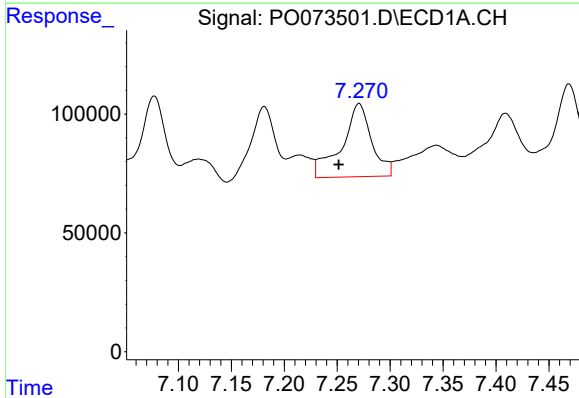


#24 AR-1248-4
 R.T.: 7.215 min
 Delta R.T.: 0.003 min
 Response: 145690
 Conc: 39.06 ng/ml

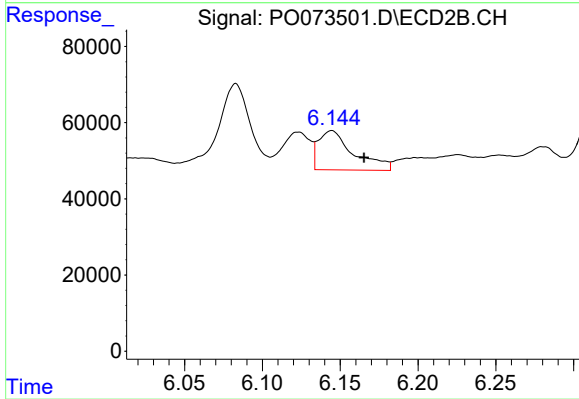
Instrument :
 ECD_O
 ClientSampleId :
 SB-01



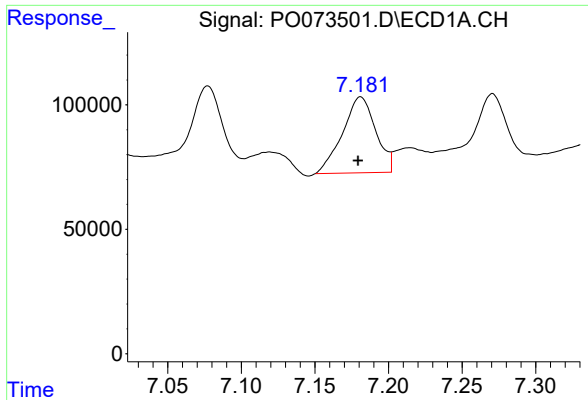
#24 AR-1248-4
 R.T.: 5.740 min
 Delta R.T.: -0.005 min
 Response: 166884
 Conc: 81.18 ng/ml



#25 AR-1248-5
 R.T.: 7.271 min
 Delta R.T.: 0.019 min
 Response: 607153
 Conc: 169.69 ng/ml



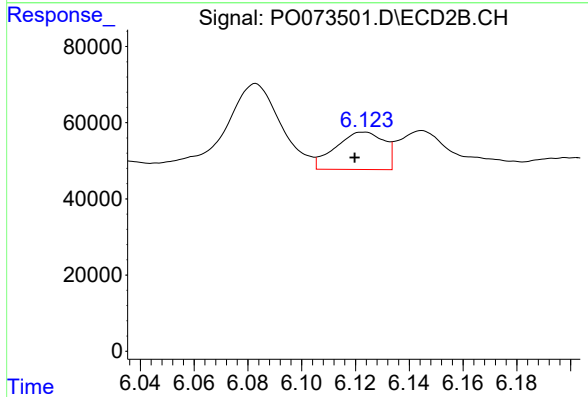
#25 AR-1248-5
 R.T.: 6.145 min
 Delta R.T.: -0.021 min
 Response: 161722
 Conc: 72.83 ng/ml



#26 AR-1254-1

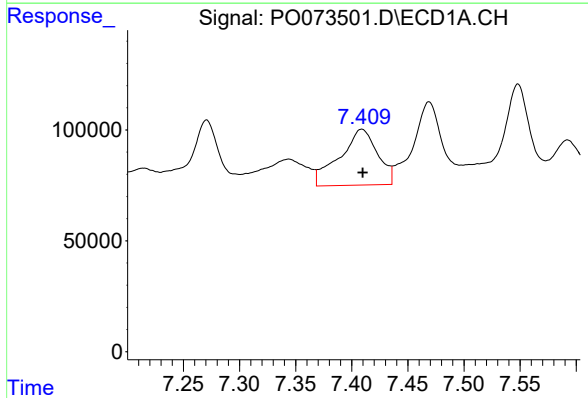
R.T.: 7.181 min
 Delta R.T.: 0.002 min
 Response: 478373
 Conc: 138.32 ng/ml

Instrument :
 ECD_O
 ClientSampled :
 SB-01



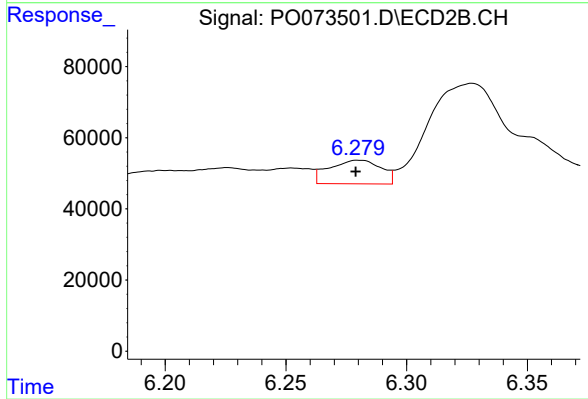
#26 AR-1254-1

R.T.: 6.123 min
 Delta R.T.: 0.003 min
 Response: 123368
 Conc: 39.62 ng/ml



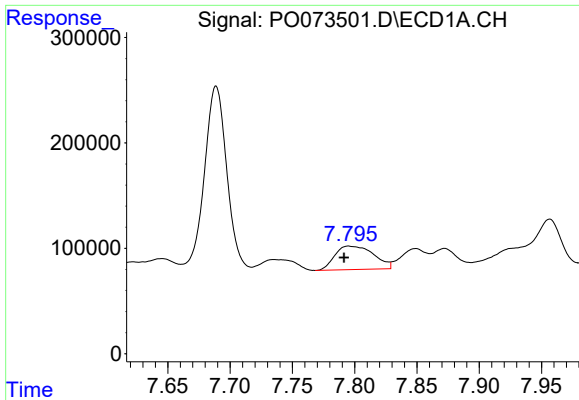
#27 AR-1254-2

R.T.: 7.409 min
 Delta R.T.: -0.001 min
 Response: 592578
 Conc: 108.77 ng/ml



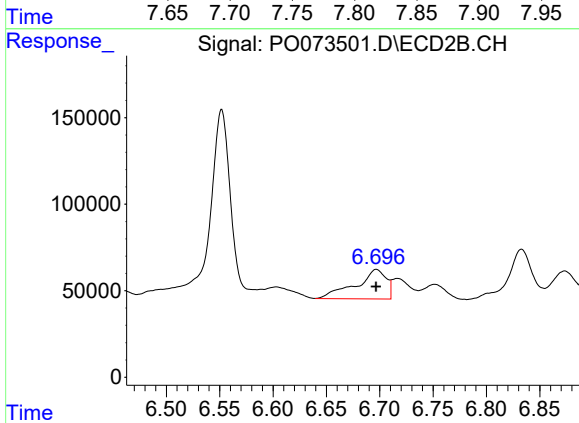
#27 AR-1254-2

R.T.: 6.280 min
 Delta R.T.: 0.001 min
 Response: 98855
 Conc: 36.21 ng/ml

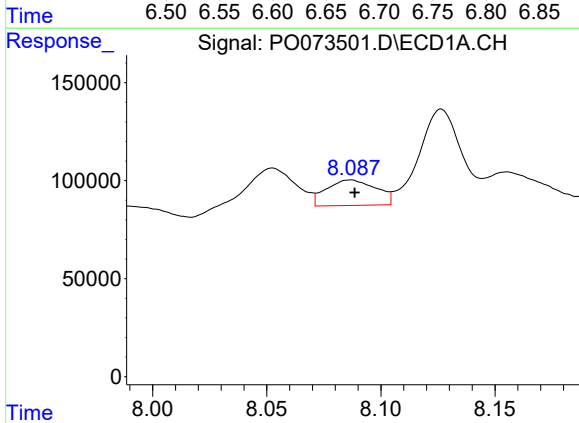


#28 AR-1254-3
 R.T.: 7.795 min
 Delta R.T.: 0.004 min
 Response: 480577
 Conc: 84.80 ng/ml

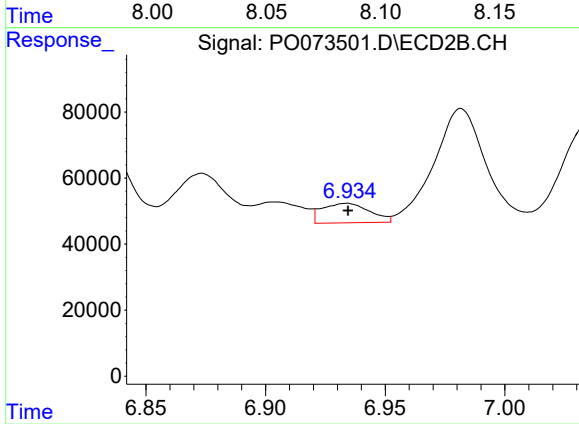
Instrument :
 ECD_O
 ClientSampled :
 SB-01



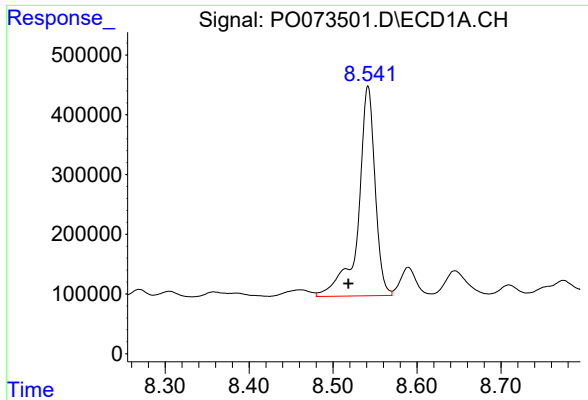
#28 AR-1254-3
 R.T.: 6.697 min
 Delta R.T.: 0.000 min
 Response: 340130
 Conc: 80.42 ng/ml



#29 AR-1254-4
 R.T.: 8.087 min
 Delta R.T.: -0.002 min
 Response: 197130
 Conc: 40.75 ng/ml

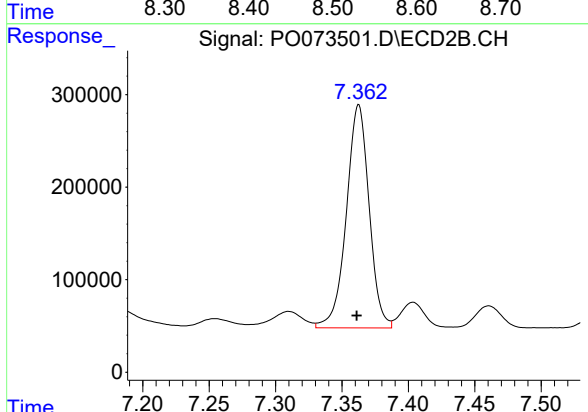


#29 AR-1254-4
 R.T.: 6.934 min
 Delta R.T.: 0.000 min
 Response: 81851
 Conc: 28.35 ng/ml

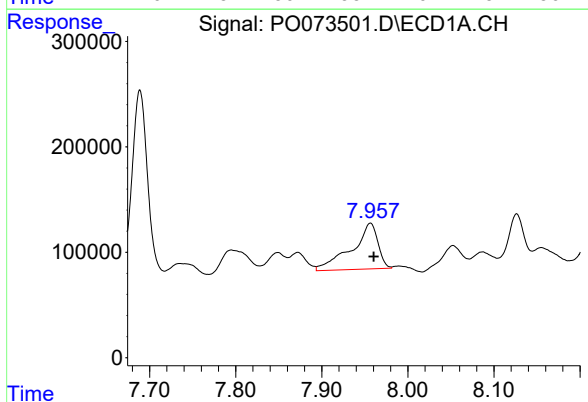


#30 AR-1254-5
 R.T.: 8.542 min
 Delta R.T.: 0.023 min
 Response: 4874829
 Conc: 1024.05 ng/ml

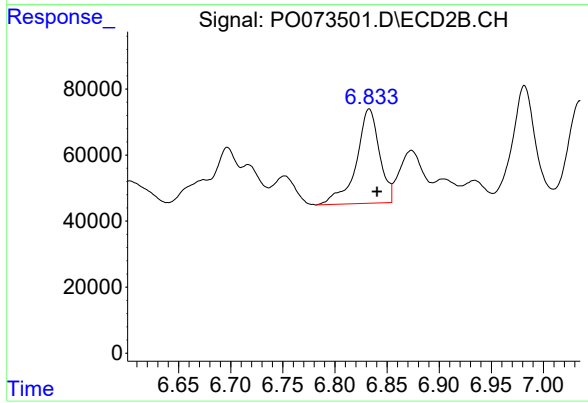
Instrument :
 ECD_O
 ClientSampleId :
 SB-01



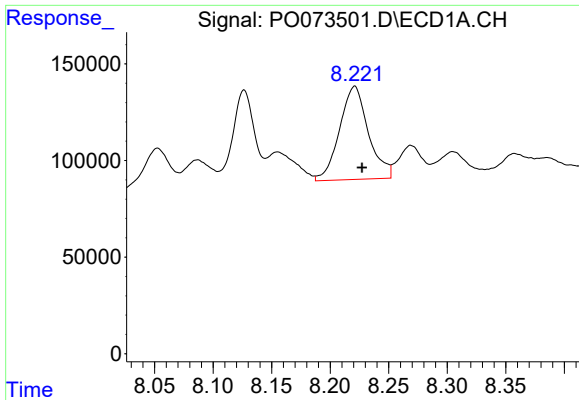
#30 AR-1254-5
 R.T.: 7.363 min
 Delta R.T.: 0.001 min
 Response: 2880281
 Conc: 779.90 ng/ml



#31 AR-1260-1
 R.T.: 7.957 min
 Delta R.T.: -0.004 min
 Response: 921015
 Conc: 228.24 ng/ml

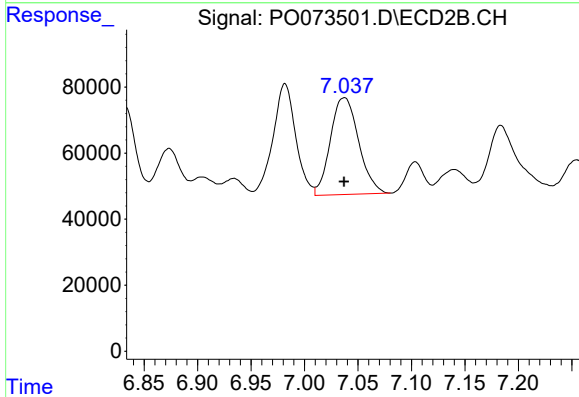


#31 AR-1260-1
 R.T.: 6.833 min
 Delta R.T.: -0.007 min
 Response: 442749
 Conc: 164.79 ng/ml

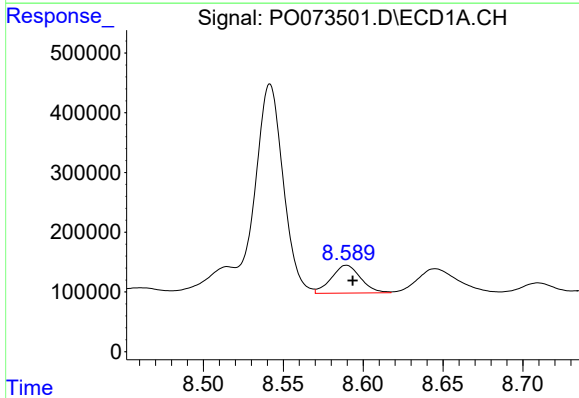


#32 AR-1260-2
 R.T.: 8.221 min
 Delta R.T.: -0.006 min
 Response: 829740
 Conc: 150.98 ng/ml

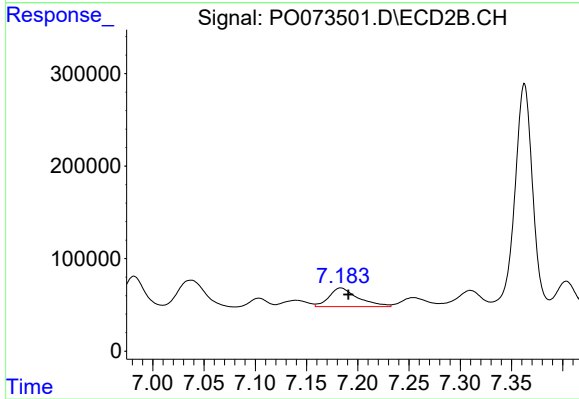
Instrument :
 ECD_O
ClientSampled :
 SB-01



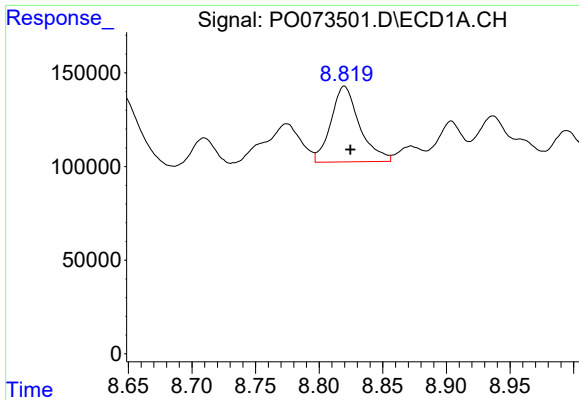
#32 AR-1260-2
 R.T.: 7.037 min
 Delta R.T.: 0.000 min
 Response: 538957
 Conc: 161.58 ng/ml



#33 AR-1260-3
 R.T.: 8.590 min
 Delta R.T.: -0.004 min
 Response: 597526
 Conc: 134.65 ng/ml



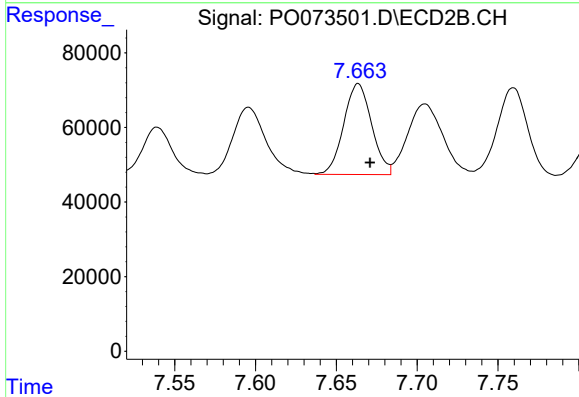
#33 AR-1260-3
 R.T.: 7.184 min
 Delta R.T.: -0.007 min
 Response: 395925
 Conc: 128.17 ng/ml



#34 AR-1260-4

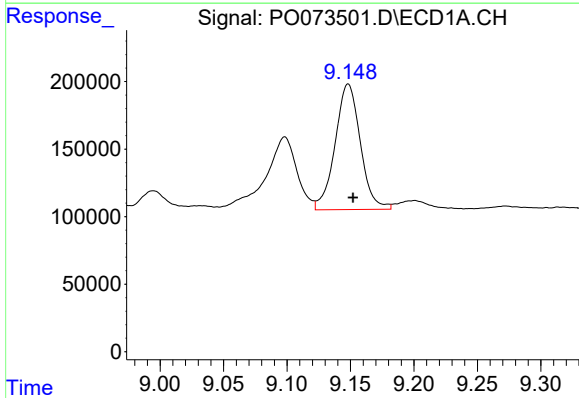
R.T.: 8.820 min
 Delta R.T.: -0.005 min
 Response: 633221
 Conc: 146.71 ng/ml

Instrument :
 ECD_O
 ClientSampleId :
 SB-01



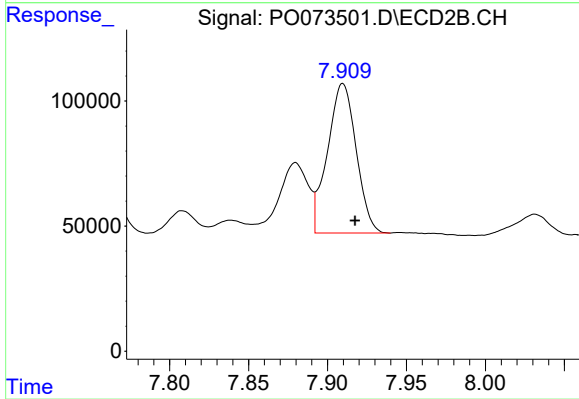
#34 AR-1260-4

R.T.: 7.664 min
 Delta R.T.: -0.007 min
 Response: 293198
 Conc: 119.15 ng/ml



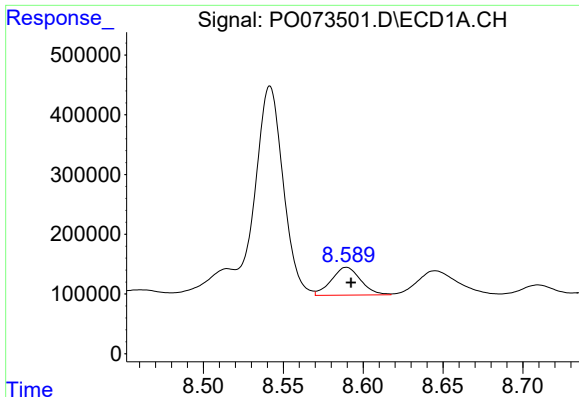
#35 AR-1260-5

R.T.: 9.148 min
 Delta R.T.: -0.004 min
 Response: 1289019
 Conc: 130.54 ng/ml



#35 AR-1260-5

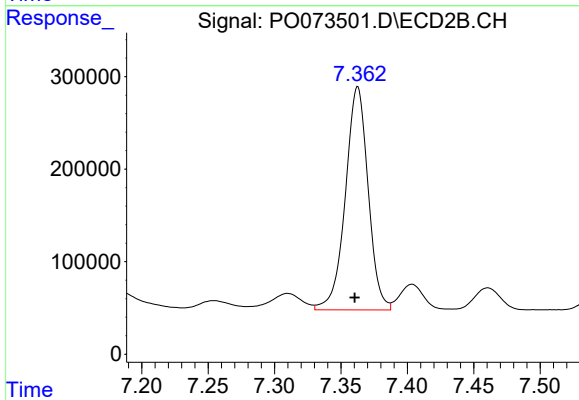
R.T.: 7.910 min
 Delta R.T.: -0.008 min
 Response: 755914
 Conc: 122.02 ng/ml



#36 AR-1262-1

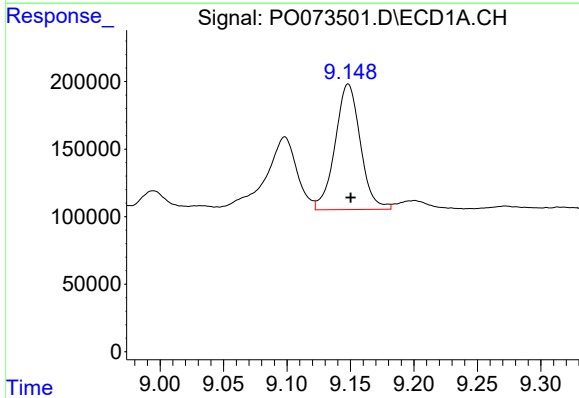
R.T.: 8.590 min
 Delta R.T.: -0.003 min
 Response: 597526
 Conc: 95.71 ng/ml

Instrument :
 ECD_O
 ClientSampled :
 SB-01



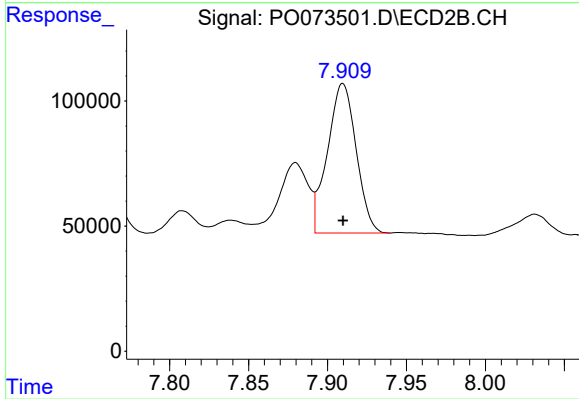
#36 AR-1262-1

R.T.: 7.363 min
 Delta R.T.: 0.002 min
 Response: 2880281
 Conc: 1486.26 ng/ml



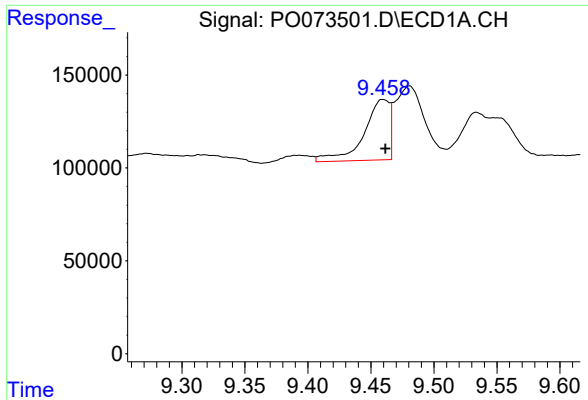
#37 AR-1262-2

R.T.: 9.148 min
 Delta R.T.: -0.002 min
 Response: 1289019
 Conc: 119.16 ng/ml



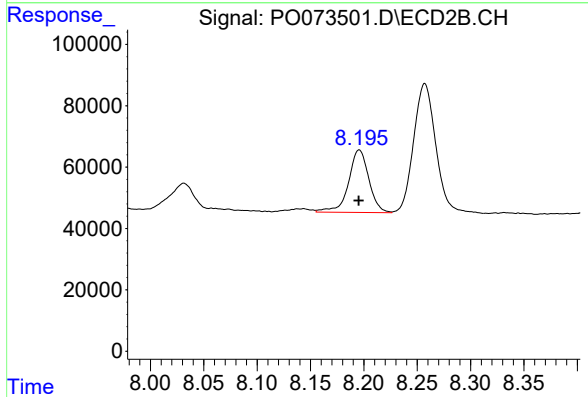
#37 AR-1262-2

R.T.: 7.910 min
 Delta R.T.: 0.000 min
 Response: 755914
 Conc: 115.29 ng/ml

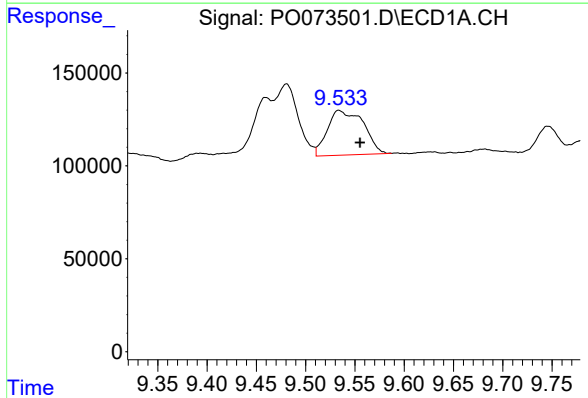


#38 AR-1262-3
 R.T.: 9.460 min
 Delta R.T.: -0.002 min
 Response: 461745
 Conc: 62.91 ng/ml

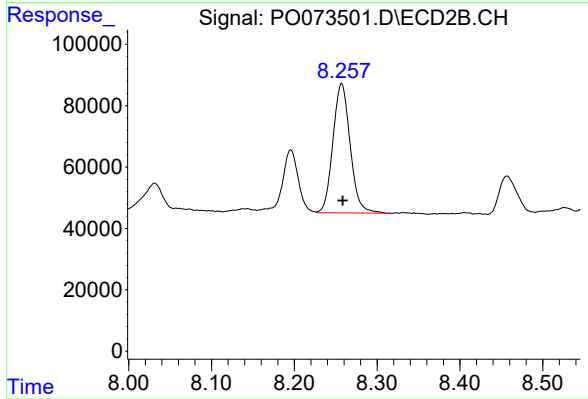
Instrument :
 ECD_O
 ClientSampled :
 SB-01



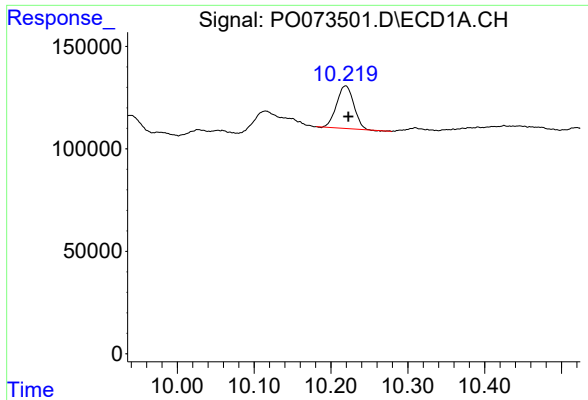
#38 AR-1262-3
 R.T.: 8.196 min
 Delta R.T.: 0.000 min
 Response: 270073
 Conc: 100.10 ng/ml



#39 AR-1262-4
 R.T.: 9.534 min
 Delta R.T.: -0.021 min
 Response: 610776
 Conc: 110.99 ng/ml



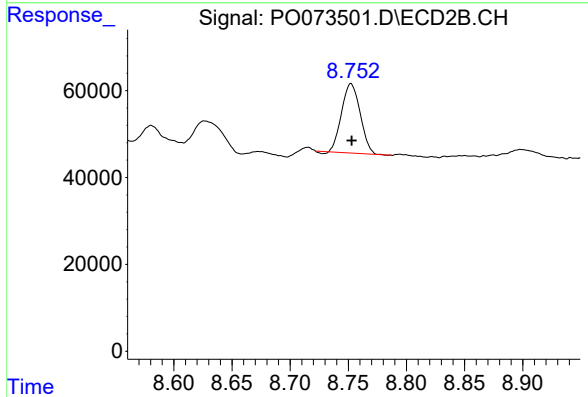
#39 AR-1262-4
 R.T.: 8.257 min
 Delta R.T.: -0.001 min
 Response: 610066
 Conc: 127.77 ng/ml



#40 AR-1262-5

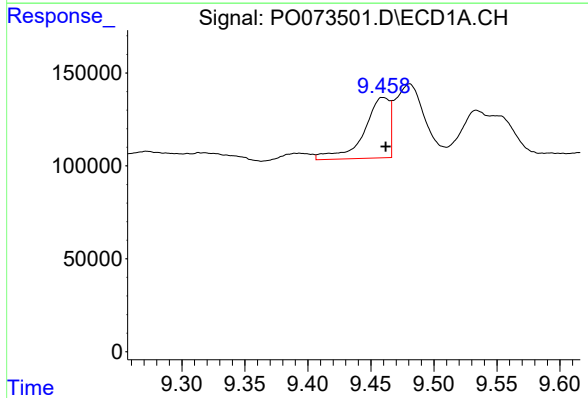
R.T.: 10.219 min
 Delta R.T.: -0.004 min
 Response: 322036
 Conc: 82.73 ng/ml

Instrument :
 ECD_O
 ClientSampled :
 SB-01



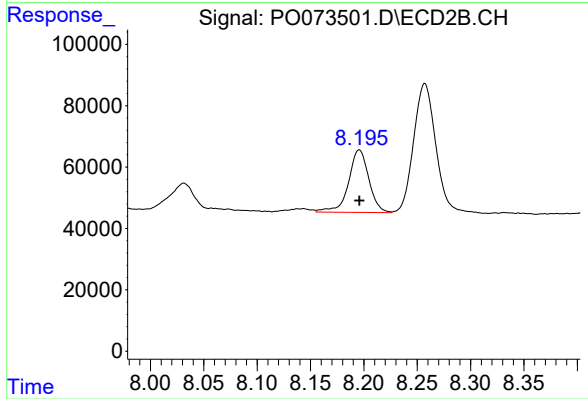
#40 AR-1262-5

R.T.: 8.752 min
 Delta R.T.: 0.000 min
 Response: 176940
 Conc: 77.36 ng/ml



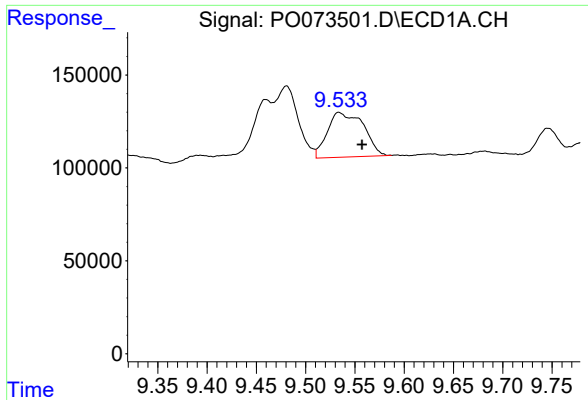
#41 AR-1268-1

R.T.: 9.460 min
 Delta R.T.: -0.002 min
 Response: 461745
 Conc: 33.06 ng/ml



#41 AR-1268-1

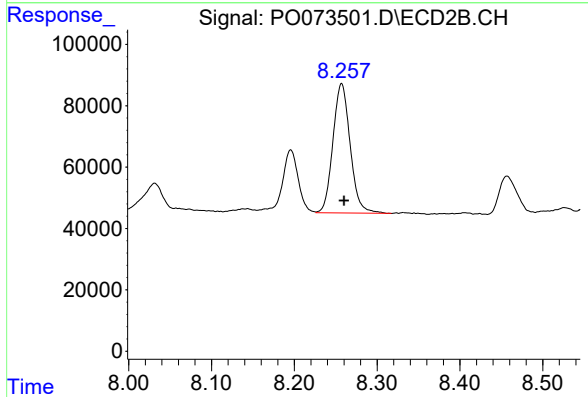
R.T.: 8.196 min
 Delta R.T.: 0.000 min
 Response: 270073
 Conc: 33.15 ng/ml



#42 AR-1268-2

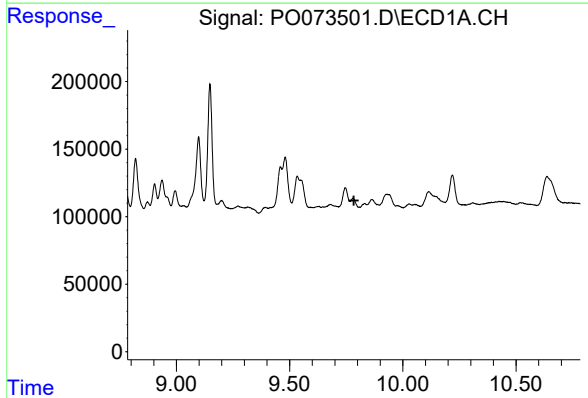
R.T.: 9.534 min
 Delta R.T.: -0.024 min
 Response: 610776
 Conc: 50.28 ng/ml

Instrument :
 ECD_O
 ClientSampled :
 SB-01



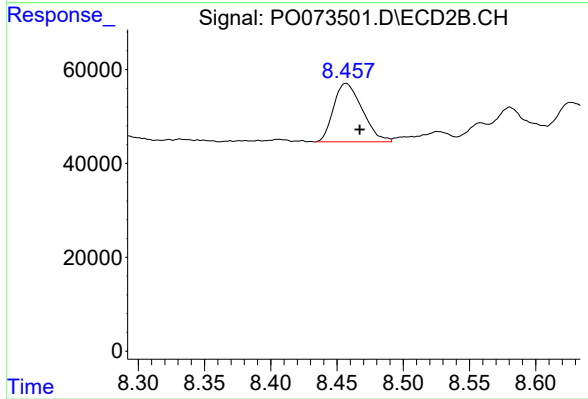
#42 AR-1268-2

R.T.: 8.257 min
 Delta R.T.: -0.003 min
 Response: 610066
 Conc: 83.53 ng/ml



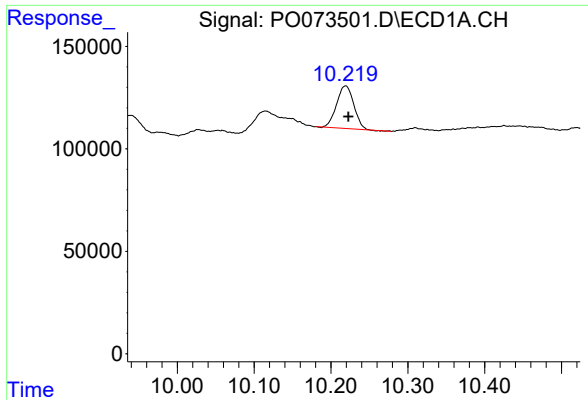
#43 AR-1268-3

R.T.: 9.780 min
 Delta R.T.: -0.004 min
 Response: -34752
 Conc: N.D.



#43 AR-1268-3

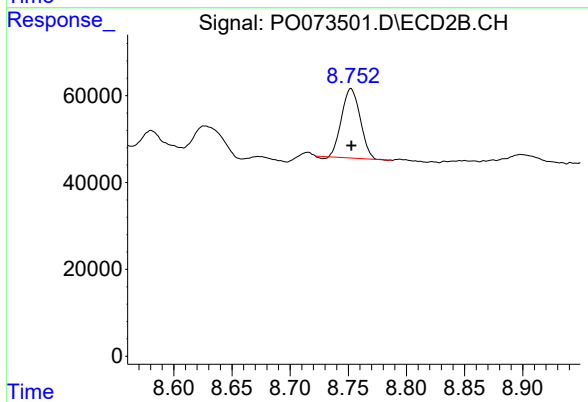
R.T.: 8.457 min
 Delta R.T.: -0.010 min
 Response: 187505
 Conc: 29.98 ng/ml



#44 AR-1268-4

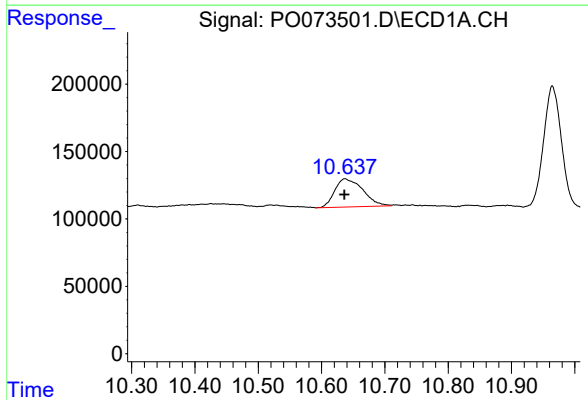
R.T.: 10.219 min
Delta R.T.: -0.004 min
Response: 322036
Conc: 71.38 ng/ml

Instrument :
ECD_O
ClientSampleId :
SB-01



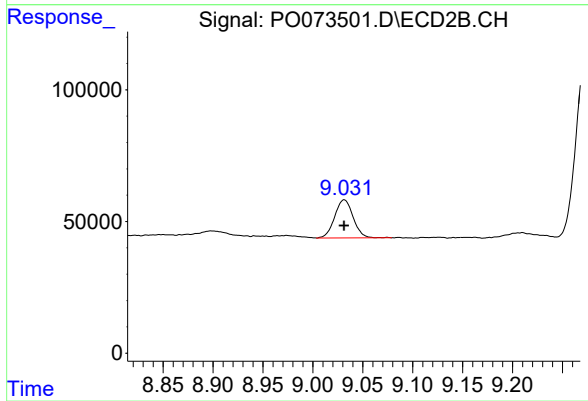
#44 AR-1268-4

R.T.: 8.752 min
Delta R.T.: 0.000 min
Response: 176940
Conc: 66.06 ng/ml



#45 AR-1268-5

R.T.: 10.637 min
Delta R.T.: 0.000 min
Response: 646177
Conc: 20.30 ng/ml



#45 AR-1268-5

R.T.: 9.031 min
Delta R.T.: 0.000 min
Response: 186347
Conc: 10.22 ng/ml