

Data Path : Z:\pestpcbsrv\HPCHEM1\ECD_0\Data\PO112420\
 Data File : PO073502.D
 Signal(s) : Signal #1: ECD1A.CH Signal #2: ECD2B.CH
 Acq On : 24 Nov 2020 11:13
 Operator : DD\AJ
 Sample : L4836-02
 Misc :
 ALS Vial : 9 Sample Multiplier: 1

Instrument :
 ECD_0
 ClientSampled :

Integration File signal 1: autoint1.e
 Integration File signal 2: autoint2.e
 Quant Time: Nov 25 10:27:59 2020
 Quant Method : Z:\pestpcbsrv\HPCHEM1\ECD_0\methods\PO112320.M
 Quant Title : GC EXTRACTABLES
 QLast Update : Wed Nov 25 10:04:26 2020
 Response via : Initial Calibration
 Integrator: ChemStation 6890 Scale Mode: Small noise peaks clipped

Volume Inj. : 2 µl
 Signal #1 Phase : ZB-MR1 Signal #2 Phase: ZB-MR2
 Signal #1 Info : 30Mx0.32mmx 0.50µ Signal #2 Info : 30M x 0.32mm x 0.25µm

Compound	RT#1	RT#2	Resp#1	Resp#2	ng/ml	ng/ml
System Monitoring Compounds						
1) SA Tetrachlo...	4.942	4.006	1850654	1176409	22.124	23.995
2) SA Decachlor...	10.965	9.273	1854298	1037041	22.490	22.618
Target Compounds						
3) L1 AR-1016-1	6.259	5.237f	40136	15599	12.188	7.657 #
4) L1 AR-1016-2	6.315f	0.000	17755	0	3.857	N.D. #
5) L1 AR-1016-3	0.000	5.477	0	88865	N.D.	59.760 #
7) L1 AR-1016-5	6.770	5.738	314847	83430	140.035	55.424 #
8) L2 AR-1221-1	5.194	0.000	66475	0	67.014	N.D. #
9) L2 AR-1221-2	5.297	4.355	32804	27280	46.641	67.486 #
13) L3 AR-1232-3	6.315f	5.477	17755	88865	9.076	141.659 #
14) L3 AR-1232-4	0.000	5.574	0	50761	N.D.	94.154 #
15) L3 AR-1232-5	6.569	5.738	43719	83430	64.937	141.220 #
16) L4 AR-1242-1	6.259	5.237f	40136	15599	15.218	9.538 #
17) L4 AR-1242-2	6.315f	0.000	17755	0	4.857	N.D. #
18) L4 AR-1242-3	6.315f	5.477	17755	88865	8.051	74.017 #
19) L4 AR-1242-4	6.498f	5.574	131011	50761	70.582	46.185 #
20) L4 AR-1242-5	7.271f	6.124	373535	183290	177.590	118.375 #
21) L5 AR-1248-1	6.259	5.237f	40136	15599	20.077	12.439 #
22) L5 AR-1248-2	6.569	0.000	43719	0	16.911	N.D. #
23) L5 AR-1248-3	6.770	5.574	314847	50761	102.738	29.746 #
24) L5 AR-1248-4	7.211	5.738	153076	83430	41.036	40.585
25) L5 AR-1248-5	7.271f	0.000	373535	0	104.399	N.D. #
26) L6 AR-1254-1	7.184	6.124	241955	183290	69.963	58.864
27) L6 AR-1254-2	7.412	0.000	467988	0	85.902	N.D. #
28) L6 AR-1254-3	7.809f	6.694	310905	113667	54.860	26.877 #
29) L6 AR-1254-4	8.088	6.919f	85000	112536	17.569	38.980 #
30) L6 AR-1254-5	8.516	7.359	39747	39380	8.350	10.663 #
31) L7 AR-1260-1	7.956	6.830	280810	184402	69.590	68.633
32) L7 AR-1260-2	0.000	7.033	0	88083	N.D.	26.408 #
33) L7 AR-1260-3	0.000	7.183	0	65522	N.D.	21.210 #
34) L7 AR-1260-4	8.837	7.663	123989	44350	28.727	18.022 #
35) L7 AR-1260-5	9.147	7.909	103789	85118	10.510	13.740 #
36) L8 AR-1262-1	0.000	7.359	0	39380	N.D.	20.320 #
37) L8 AR-1262-2	9.147	7.909	103789	85118	9.595	12.982 #
38) L8 AR-1262-3	9.458	8.195	222528	87215	30.317	32.324
39) L8 AR-1262-4	9.553	8.258	154873	146966	28.143	30.780
40) L8 AR-1262-5	10.216	8.751	35865	34217	9.214	14.961 #
41) L9 AR-1268-1	9.458	8.195	222528	87215	15.931	10.706 #
42) L9 AR-1268-2	9.553	8.258	154873	146966	12.749	20.122 #
43) L9 AR-1268-3	9.781	8.466	51615	71871	4.900	11.491 #
44) L9 AR-1268-4	10.216	8.751	35865	34217	7.950	12.774 #
45) L9 AR-1268-5	10.634	9.031	446237	123183	14.020	6.753 #

Data Path : Z:\pestpcbsrv\HPCHEM1\ECD_0\Data\PO112420\
 Data File : PO073502.D
 Signal(s) : Signal #1: ECD1A.CH Signal #2: ECD2B.CH
 Acq On : 24 Nov 2020 11:13
 Operator : DD\AJ
 Sample : L4836-02
 Misc :
 ALS Vial : 9 Sample Multiplier: 1

Instrument :
 ECD_0
 ClientSampleId :

Integration File signal 1: autoint1.e
 Integration File signal 2: autoint2.e
 Quant Time: Nov 25 10:27:59 2020
 Quant Method : Z:\pestpcbsrv\HPCHEM1\ECD_0\methods\PO112320.M
 Quant Title : GC EXTRACTABLES
 QLast Update : Wed Nov 25 10:04:26 2020
 Response via : Initial Calibration
 Integrator: ChemStation 6890 Scale Mode: Small noise peaks clipped

Volume Inj. : 2 µl
 Signal #1 Phase : ZB-MR1 Signal #2 Phase: ZB-MR2
 Signal #1 Info : 30Mx0.32mmx 0.50µ Signal #2 Info : 30M x 0.32mm x 0.25µm

Compound	RT#1	RT#2	Resp#1	Resp#2	ng/ml	ng/ml

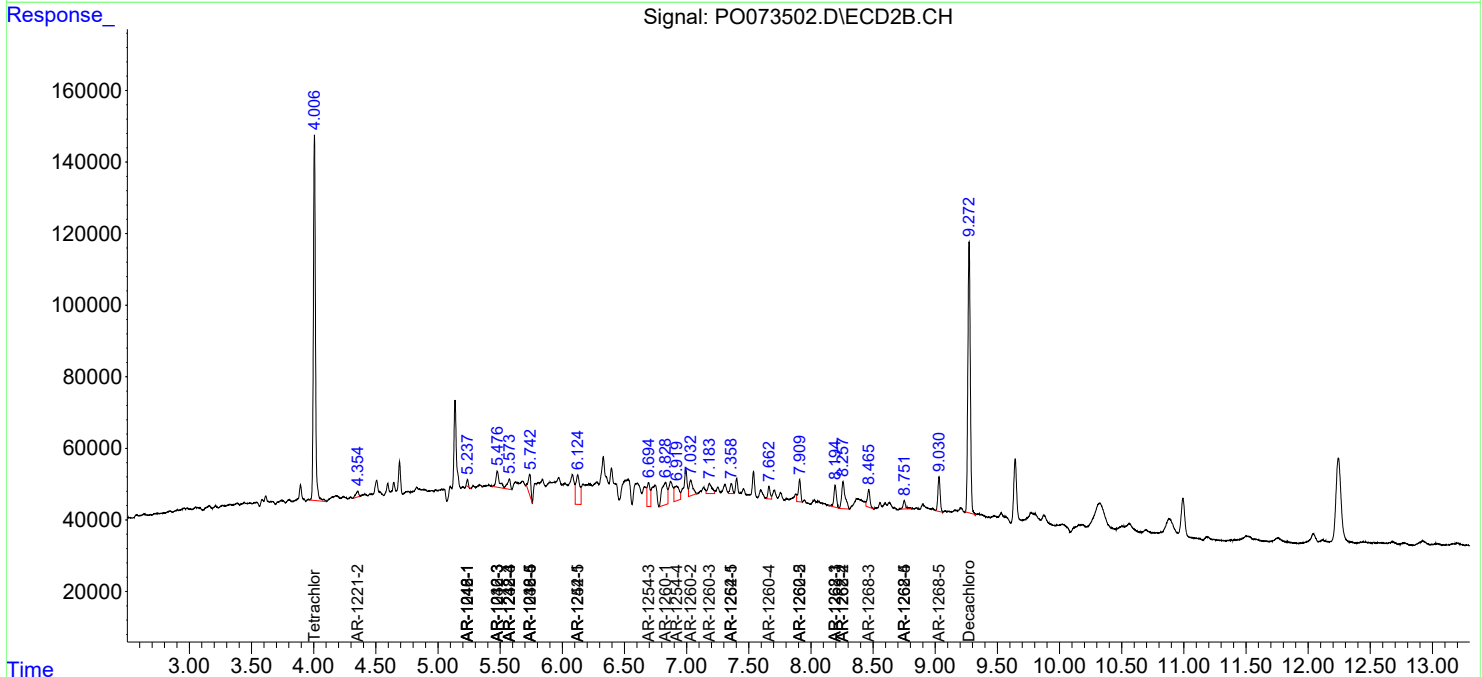
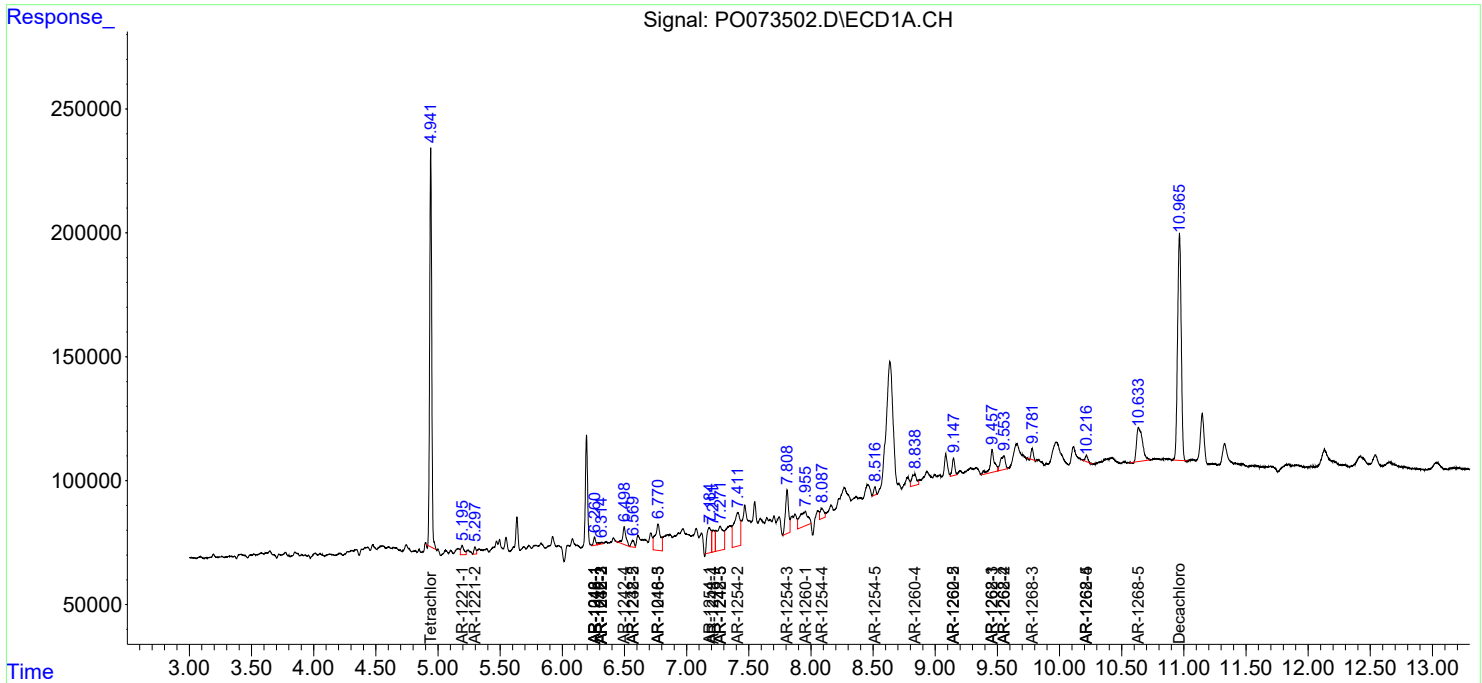
(f)=RT Delta > 1/2 Window (#)=Amounts differ by > 25% (m)=manual int.

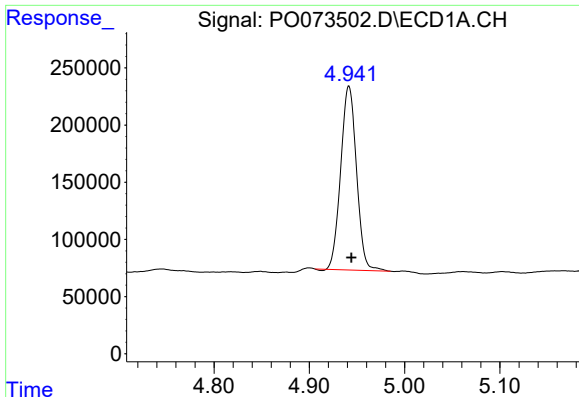
Data Path : Z:\pestpcbsrv\HPCHEM1\ECD_O\Data\PO112420\
 Data File : PO073502.D
 Signal(s) : Signal #1: ECD1A.CH Signal #2: ECD2B.CH
 Acq On : 24 Nov 2020 11:13
 Operator : DD\AJ
 Sample : L4836-02
 Misc :
 ALS Vial : 9 Sample Multiplier: 1

Instrument :
 ECD_O
 ClientSampled :

Integration File signal 1: autoint1.e
 Integration File signal 2: autoint2.e
 Quant Time: Nov 25 10:27:59 2020
 Quant Method : Z:\pestpcbsrv\HPCHEM1\ECD_O\methods\PO112320.M
 Quant Title : GC EXTRACTABLES
 QLast Update : Wed Nov 25 10:04:26 2020
 Response via : Initial Calibration
 Integrator: ChemStation 6890 Scale Mode: Small noise peaks clipped

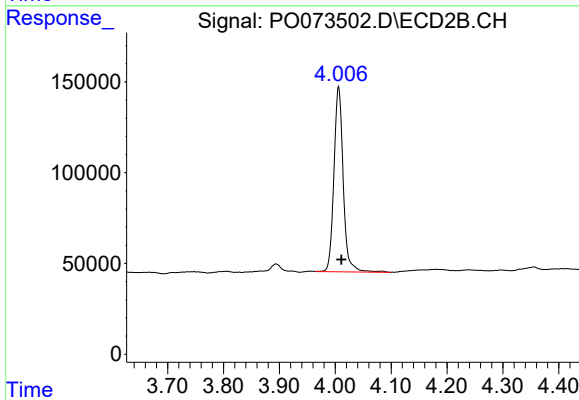
Volume Inj. : 2 µl
 Signal #1 Phase : ZB-MR1 Signal #2 Phase: ZB-MR2
 Signal #1 Info : 30Mx0.32mmx 0.50µ Signal #2 Info : 30M x 0.32mm x 0.25µm



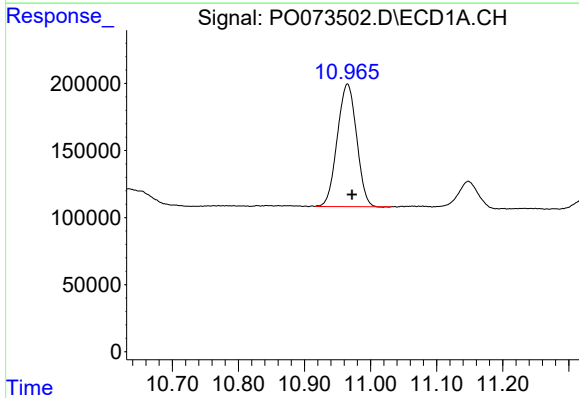


#1 Tetrachloro-m-xylene
 R.T.: 4.942 min
 Delta R.T.: -0.002 min
 Response: 1850654
 Conc: 22.12 ng/ml

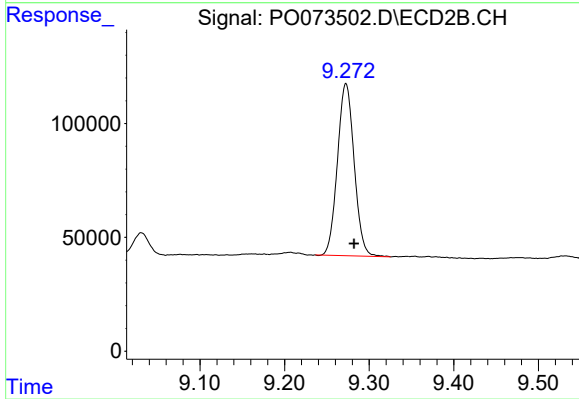
Instrument :
 ECD_O
 ClientSampleId :



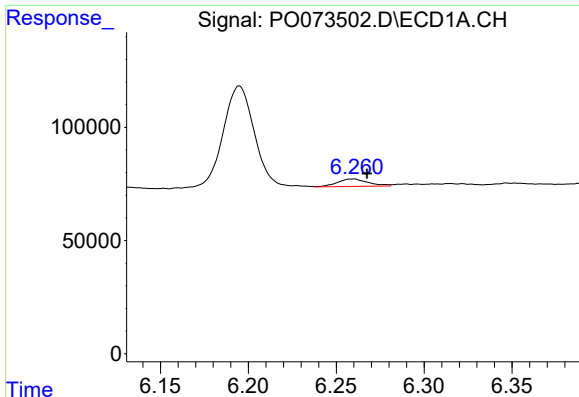
#1 Tetrachloro-m-xylene
 R.T.: 4.006 min
 Delta R.T.: -0.005 min
 Response: 1176409
 Conc: 23.99 ng/ml



#2 Decachlorobiphenyl
 R.T.: 10.965 min
 Delta R.T.: -0.007 min
 Response: 1854298
 Conc: 22.49 ng/ml



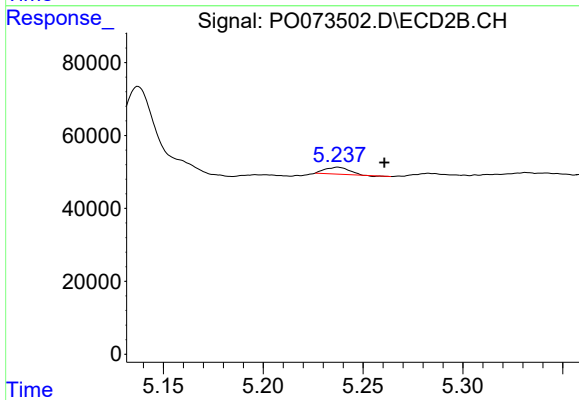
#2 Decachlorobiphenyl
 R.T.: 9.273 min
 Delta R.T.: -0.009 min
 Response: 1037041
 Conc: 22.62 ng/ml



#3 AR-1016-1

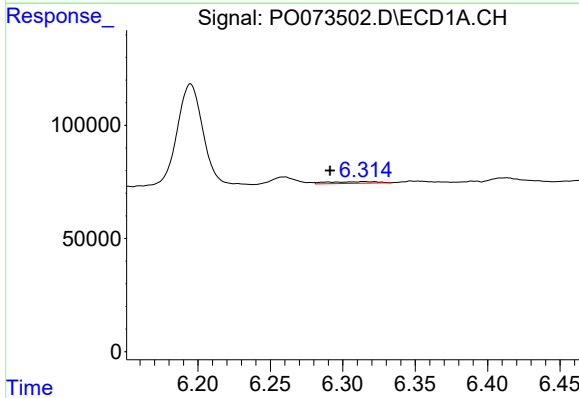
R.T.: 6.259 min
 Delta R.T.: -0.008 min
 Response: 40136
 Conc: 12.19 ng/ml

Instrument :
 ECD_O
 ClientSampleId :



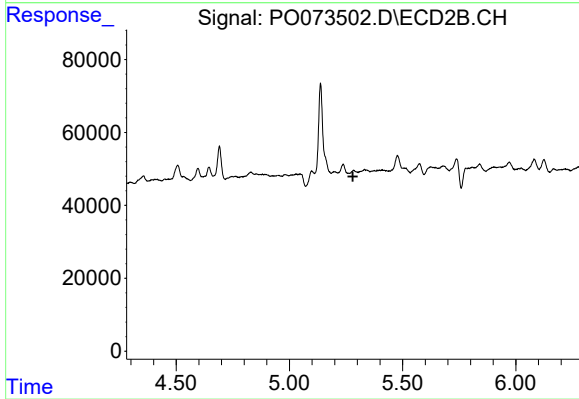
#3 AR-1016-1

R.T.: 5.237 min
 Delta R.T.: -0.023 min
 Response: 15599
 Conc: 7.66 ng/ml



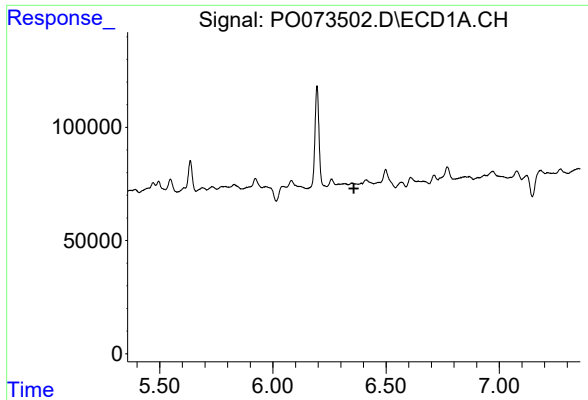
#4 AR-1016-2

R.T.: 6.315 min
 Delta R.T.: 0.023 min
 Response: 17755
 Conc: 3.86 ng/ml



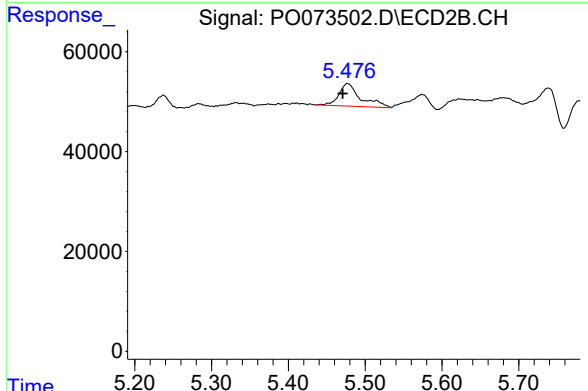
#4 AR-1016-2

R.T.: 0.000 min
 Exp R.T. : 5.281 min
 Response: 0
 Conc: N.D.

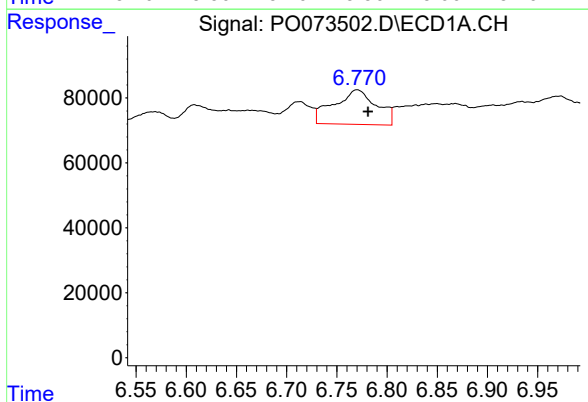


#5 AR-1016-3
 R.T.: 0.000 min
 Exp R.T.: 6.358 min
 Response: 0
 Conc: N.D.

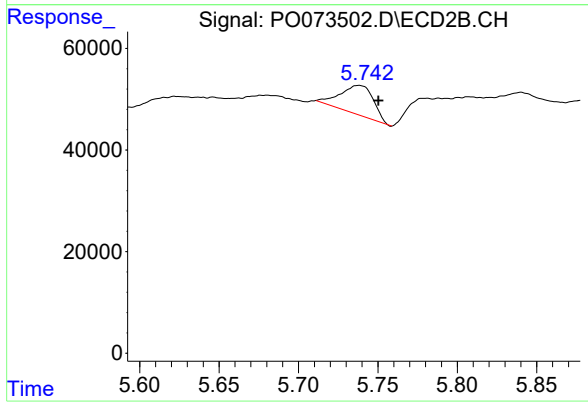
Instrument :
 ECD_O
 ClientSampled :



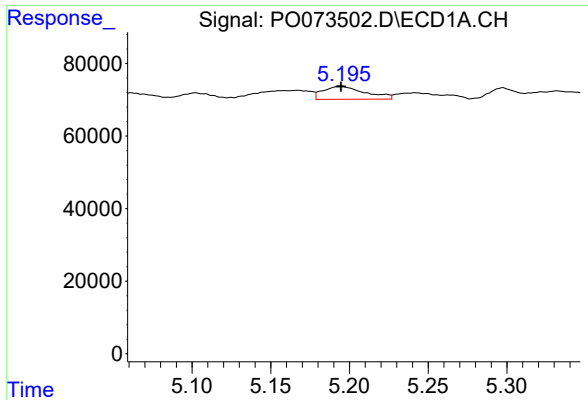
#5 AR-1016-3
 R.T.: 5.477 min
 Delta R.T.: 0.006 min
 Response: 88865
 Conc: 59.76 ng/ml



#7 AR-1016-5
 R.T.: 6.770 min
 Delta R.T.: -0.011 min
 Response: 314847
 Conc: 140.03 ng/ml

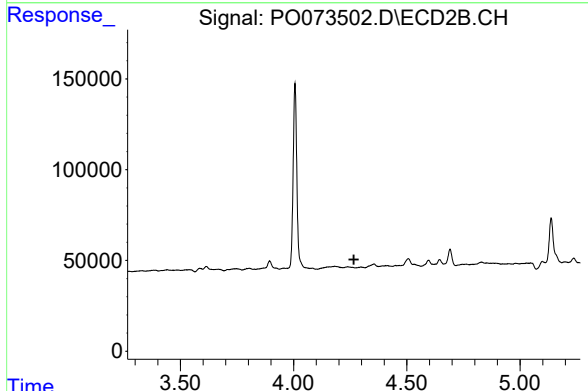


#7 AR-1016-5
 R.T.: 5.738 min
 Delta R.T.: -0.012 min
 Response: 83430
 Conc: 55.42 ng/ml

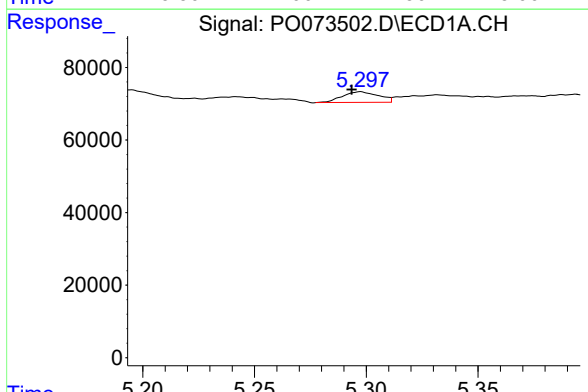


#8 AR-1221-1
 R.T.: 5.194 min
 Delta R.T.: 0.000 min
 Response: 66475
 Conc: 67.01 ng/ml

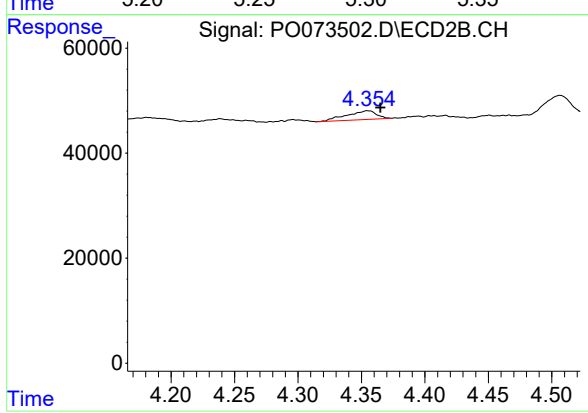
Instrument :
 ECD_O
 ClientSampled :



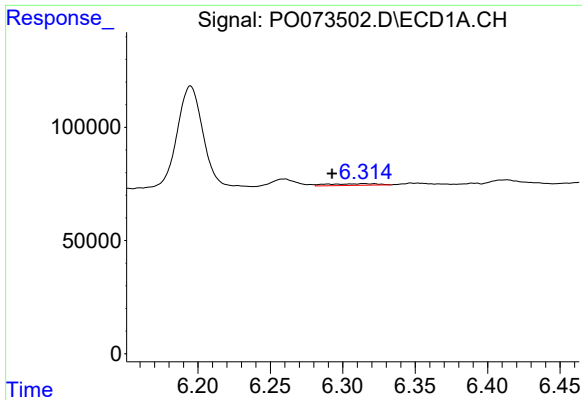
#8 AR-1221-1
 R.T.: 0.000 min
 Exp R.T. : 4.266 min
 Response: 0
 Conc: N.D.



#9 AR-1221-2
 R.T.: 5.297 min
 Delta R.T.: 0.004 min
 Response: 32804
 Conc: 46.64 ng/ml



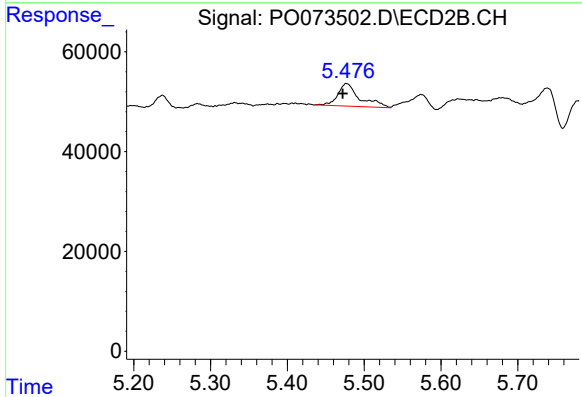
#9 AR-1221-2
 R.T.: 4.355 min
 Delta R.T.: -0.010 min
 Response: 27280
 Conc: 67.49 ng/ml



#13 AR-1232-3

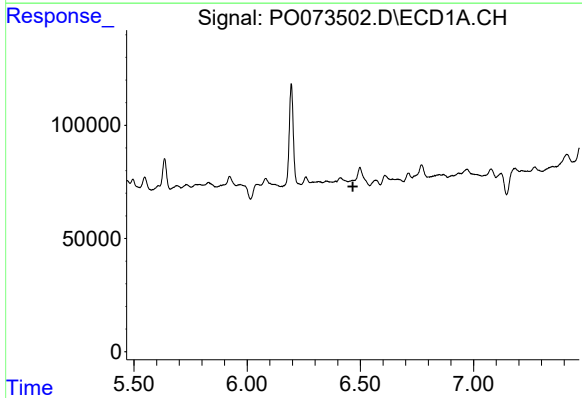
R.T.: 6.315 min
 Delta R.T.: 0.022 min
 Response: 17755
 Conc: 9.08 ng/ml

Instrument :
 ECD_O
 ClientSampleId :



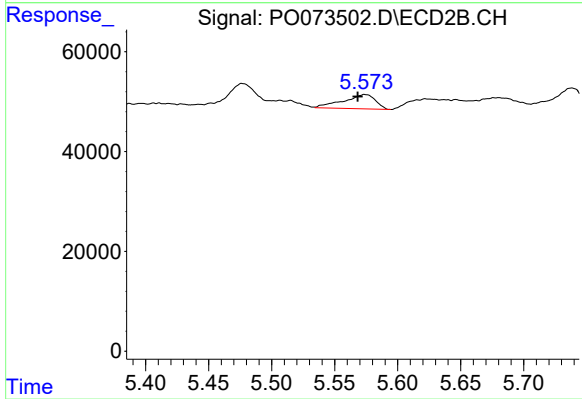
#13 AR-1232-3

R.T.: 5.477 min
 Delta R.T.: 0.005 min
 Response: 88865
 Conc: 141.66 ng/ml



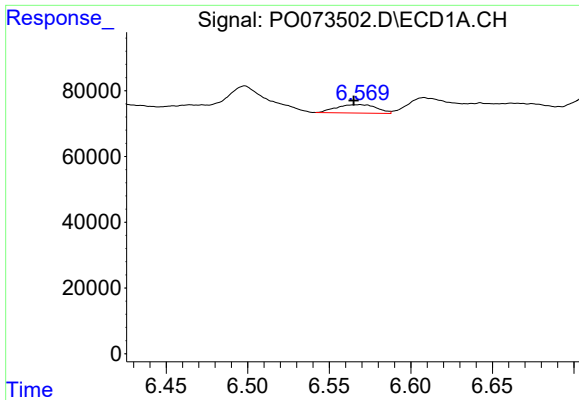
#14 AR-1232-4

R.T.: 0.000 min
 Exp R.T. : 6.467 min
 Response: 0
 Conc: N.D.



#14 AR-1232-4

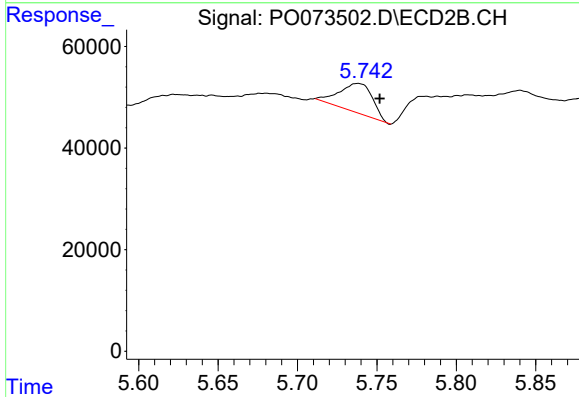
R.T.: 5.574 min
 Delta R.T.: 0.006 min
 Response: 50761
 Conc: 94.15 ng/ml



#15 AR-1232-5

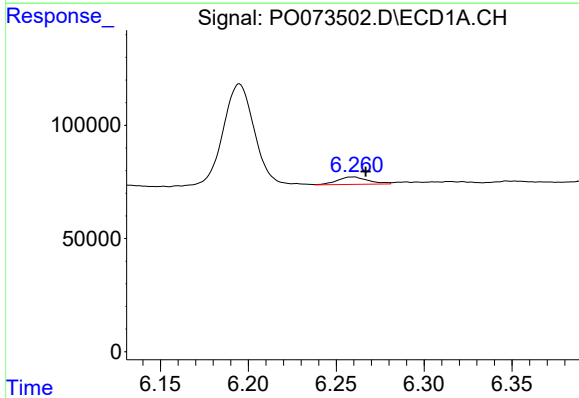
R.T.: 6.569 min
 Delta R.T.: 0.004 min
 Response: 43719
 Conc: 64.94 ng/ml

Instrument :
 ECD_O
 ClientSampled :



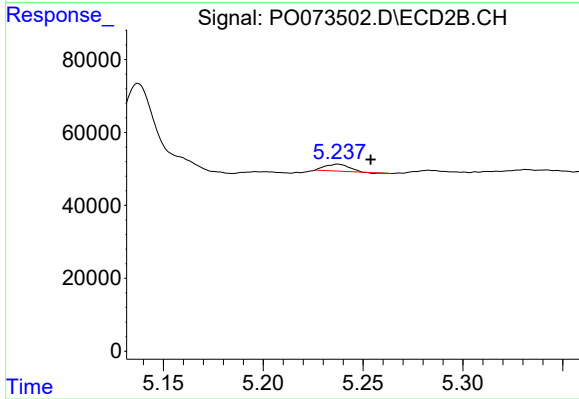
#15 AR-1232-5

R.T.: 5.738 min
 Delta R.T.: -0.014 min
 Response: 83430
 Conc: 141.22 ng/ml



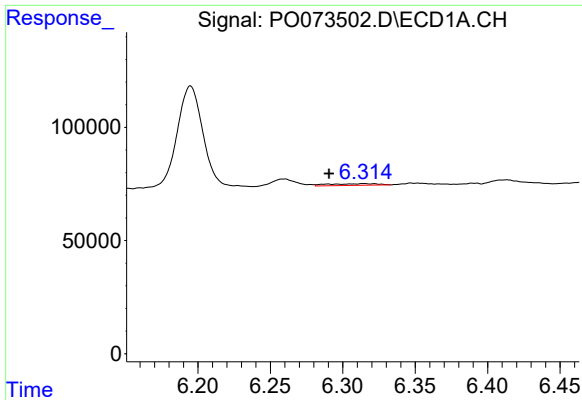
#16 AR-1242-1

R.T.: 6.259 min
 Delta R.T.: -0.007 min
 Response: 40136
 Conc: 15.22 ng/ml



#16 AR-1242-1

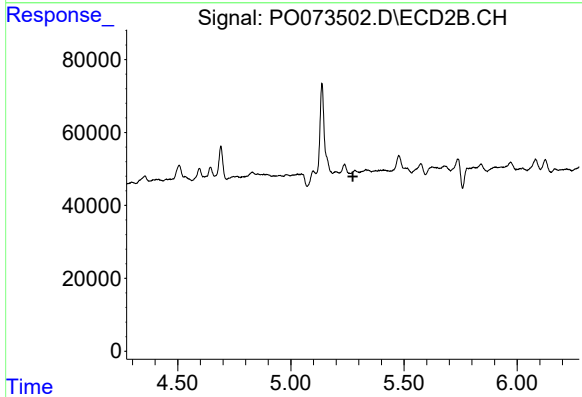
R.T.: 5.237 min
 Delta R.T.: -0.016 min
 Response: 15599
 Conc: 9.54 ng/ml



#17 AR-1242-2

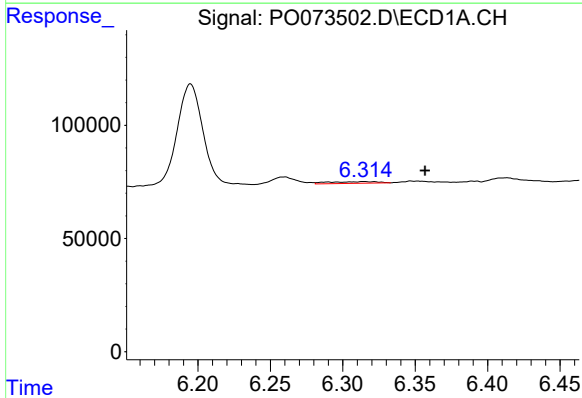
R.T.: 6.315 min
 Delta R.T.: 0.024 min
 Response: 17755
 Conc: 4.86 ng/ml

Instrument :
 ECD_O
 ClientSampled :



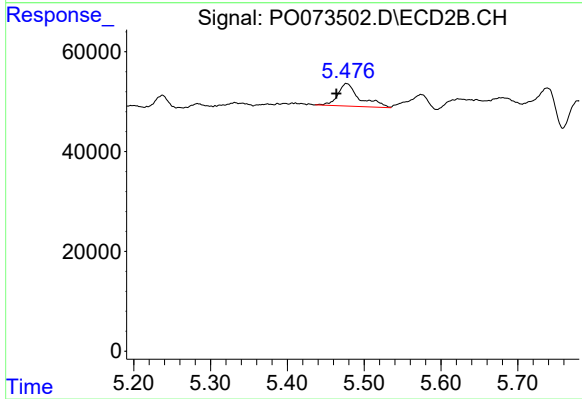
#17 AR-1242-2

R.T.: 0.000 min
 Exp R.T. : 5.274 min
 Response: 0
 Conc: N.D.



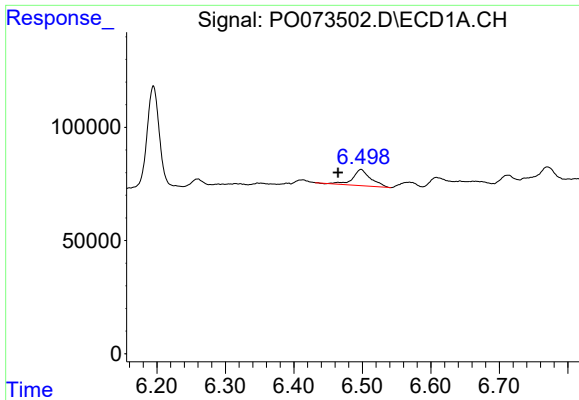
#18 AR-1242-3

R.T.: 6.315 min
 Delta R.T.: -0.042 min
 Response: 17755
 Conc: 8.05 ng/ml



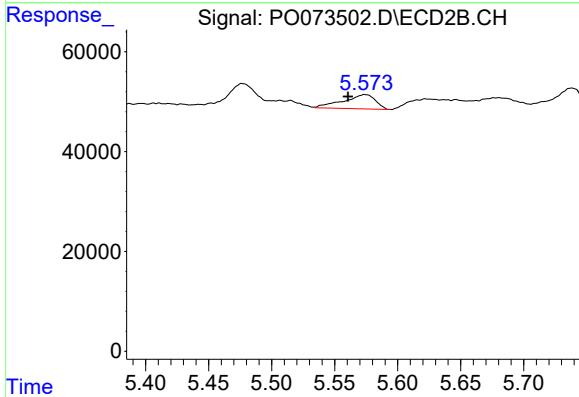
#18 AR-1242-3

R.T.: 5.477 min
 Delta R.T.: 0.013 min
 Response: 88865
 Conc: 74.02 ng/ml

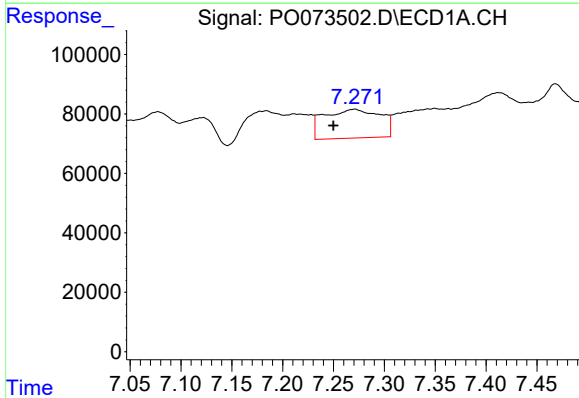


#19 AR-1242-4
 R.T.: 6.498 min
 Delta R.T.: 0.033 min
 Response: 131011
 Conc: 70.58 ng/ml

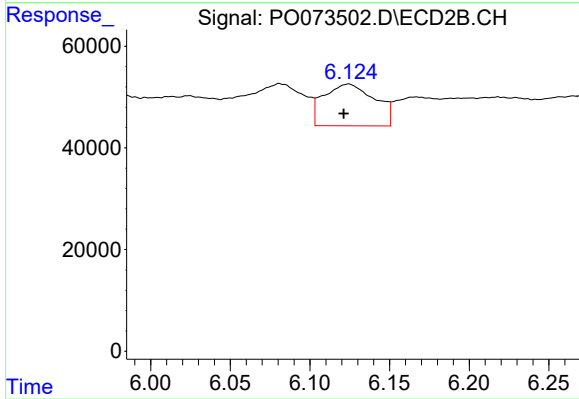
Instrument :
 ECD_O
 ClientSampleId :



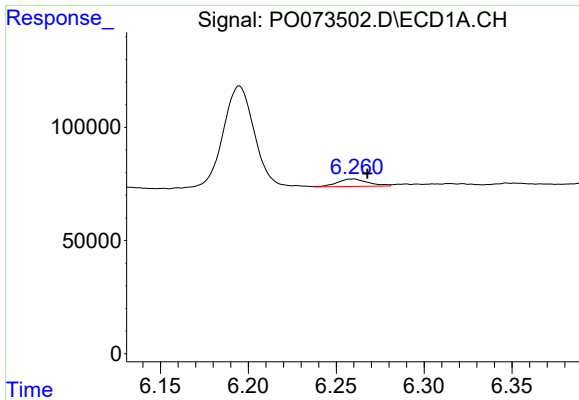
#19 AR-1242-4
 R.T.: 5.574 min
 Delta R.T.: 0.014 min
 Response: 50761
 Conc: 46.18 ng/ml



#20 AR-1242-5
 R.T.: 7.271 min
 Delta R.T.: 0.021 min
 Response: 373535
 Conc: 177.59 ng/ml



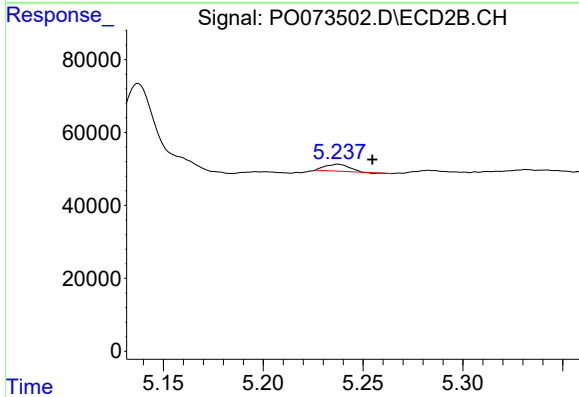
#20 AR-1242-5
 R.T.: 6.124 min
 Delta R.T.: 0.003 min
 Response: 183290
 Conc: 118.38 ng/ml



#21 AR-1248-1

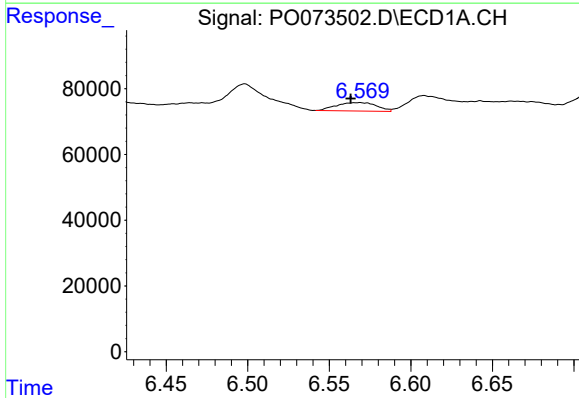
R.T.: 6.259 min
 Delta R.T.: -0.008 min
 Response: 40136
 Conc: 20.08 ng/ml

Instrument :
 ECD_O
 ClientSampleId :



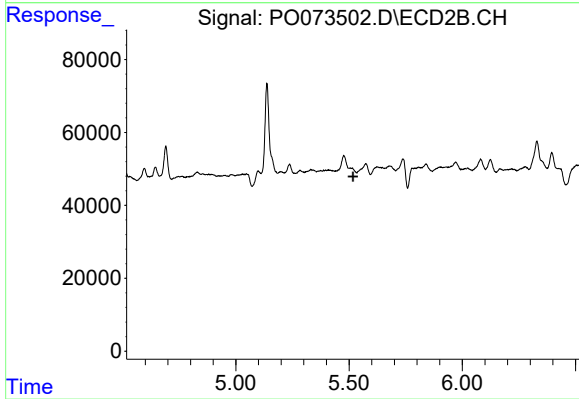
#21 AR-1248-1

R.T.: 5.237 min
 Delta R.T.: -0.017 min
 Response: 15599
 Conc: 12.44 ng/ml



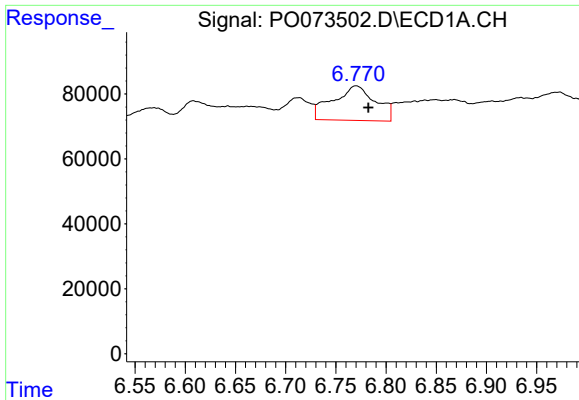
#22 AR-1248-2

R.T.: 6.569 min
 Delta R.T.: 0.005 min
 Response: 43719
 Conc: 16.91 ng/ml



#22 AR-1248-2

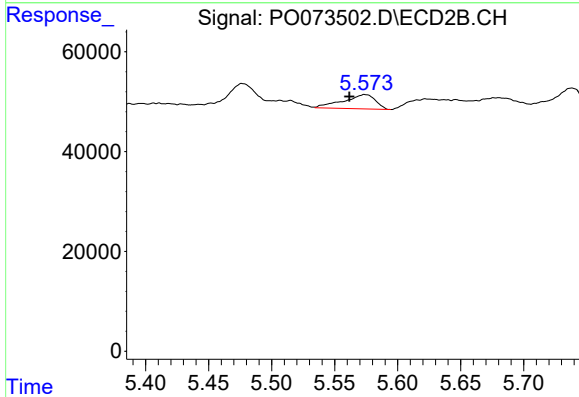
R.T.: 0.000 min
 Exp R.T. : 5.517 min
 Response: 0
 Conc: N.D.



#23 AR-1248-3

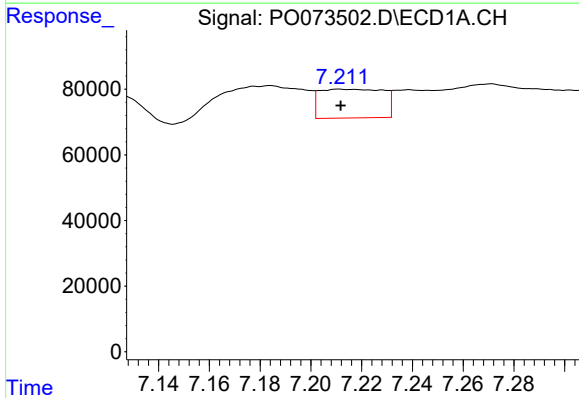
R.T.: 6.770 min
 Delta R.T.: -0.012 min
 Response: 314847
 Conc: 102.74 ng/ml

Instrument :
 ECD_O
 ClientSampled :



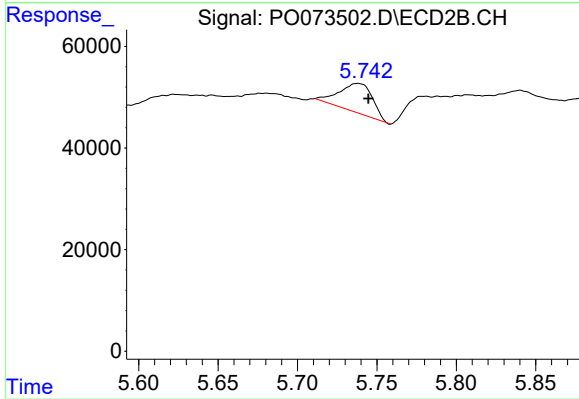
#23 AR-1248-3

R.T.: 5.574 min
 Delta R.T.: 0.013 min
 Response: 50761
 Conc: 29.75 ng/ml



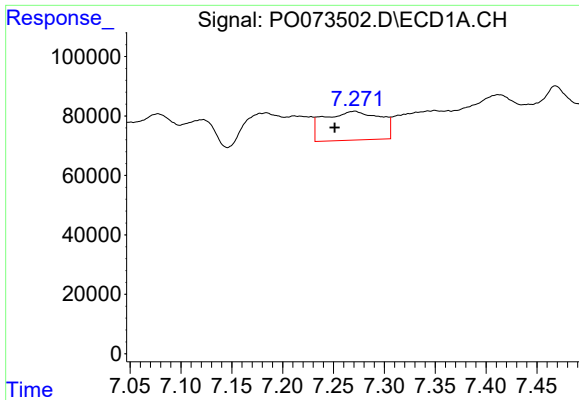
#24 AR-1248-4

R.T.: 7.211 min
 Delta R.T.: 0.000 min
 Response: 153076
 Conc: 41.04 ng/ml



#24 AR-1248-4

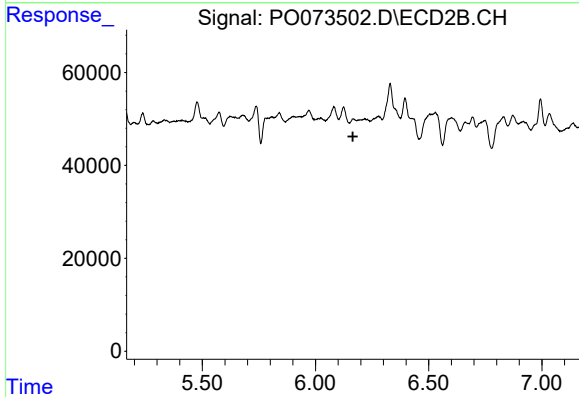
R.T.: 5.738 min
 Delta R.T.: -0.007 min
 Response: 83430
 Conc: 40.58 ng/ml



#25 AR-1248-5

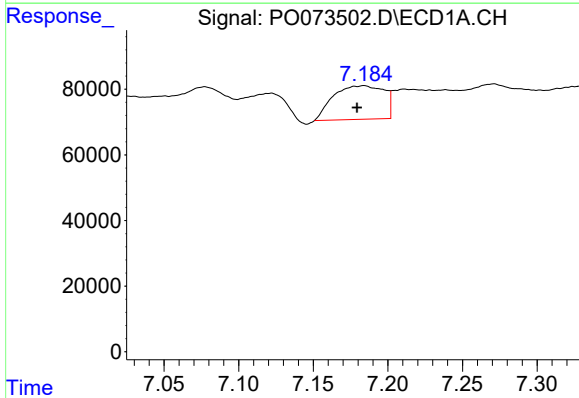
R.T.: 7.271 min
 Delta R.T.: 0.020 min
 Response: 373535
 Conc: 104.40 ng/ml

Instrument :
 ECD_O
 ClientSampled :



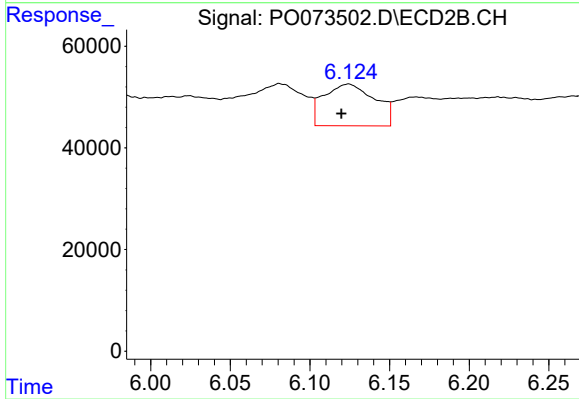
#25 AR-1248-5

R.T.: 0.000 min
 Exp R.T. : 6.165 min
 Response: 0
 Conc: N.D.



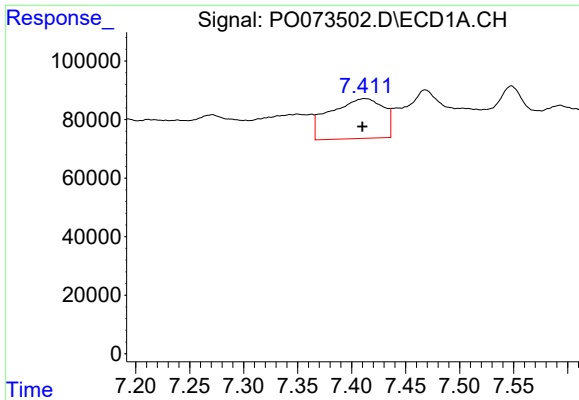
#26 AR-1254-1

R.T.: 7.184 min
 Delta R.T.: 0.005 min
 Response: 241955
 Conc: 69.96 ng/ml



#26 AR-1254-1

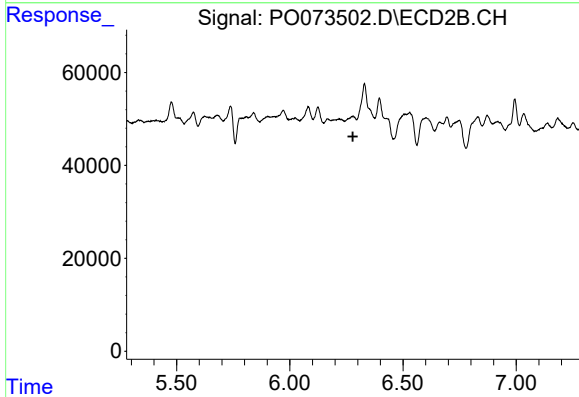
R.T.: 6.124 min
 Delta R.T.: 0.004 min
 Response: 183290
 Conc: 58.86 ng/ml



#27 AR-1254-2

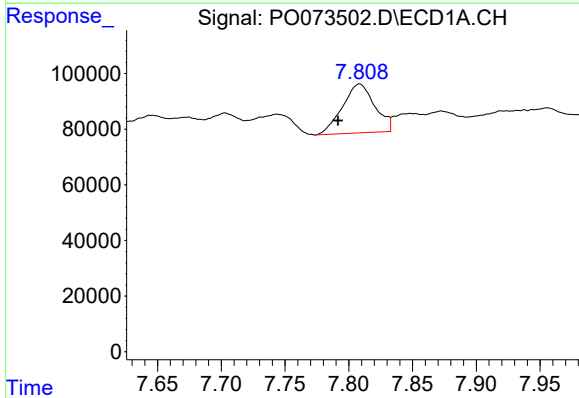
R.T.: 7.412 min
 Delta R.T.: 0.002 min
 Response: 467988
 Conc: 85.90 ng/ml

Instrument :
 ECD_O
 ClientSampleId :



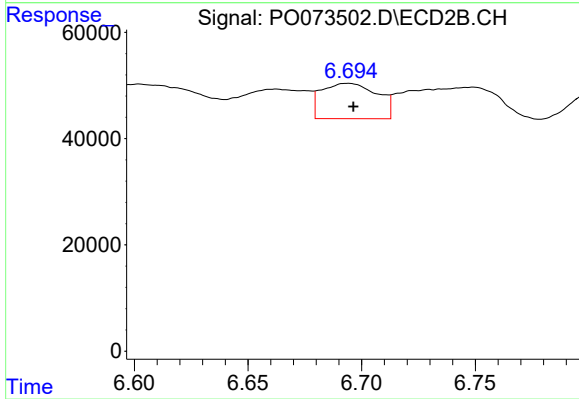
#27 AR-1254-2

R.T.: 0.000 min
 Exp R.T. : 6.279 min
 Response: 0
 Conc: N.D.



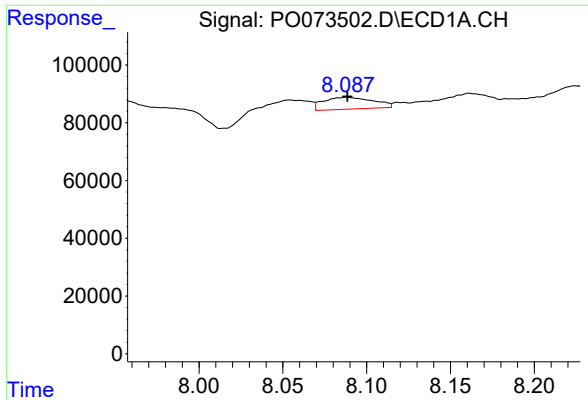
#28 AR-1254-3

R.T.: 7.809 min
 Delta R.T.: 0.017 min
 Response: 310905
 Conc: 54.86 ng/ml



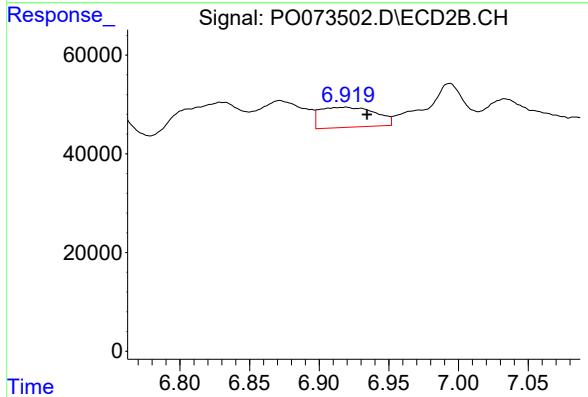
#28 AR-1254-3

R.T.: 6.694 min
 Delta R.T.: -0.003 min
 Response: 113667
 Conc: 26.88 ng/ml

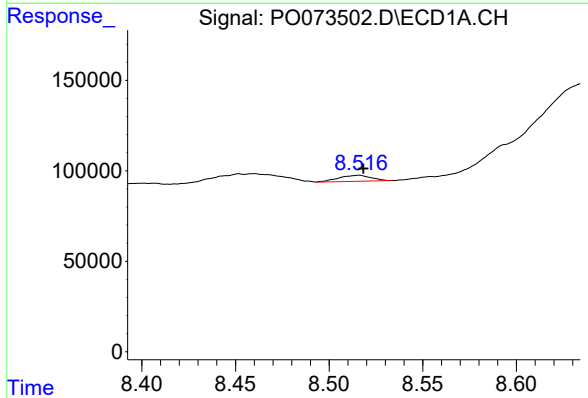


#29 AR-1254-4
 R.T.: 8.088 min
 Delta R.T.: 0.000 min
 Response: 85000
 Conc: 17.57 ng/ml

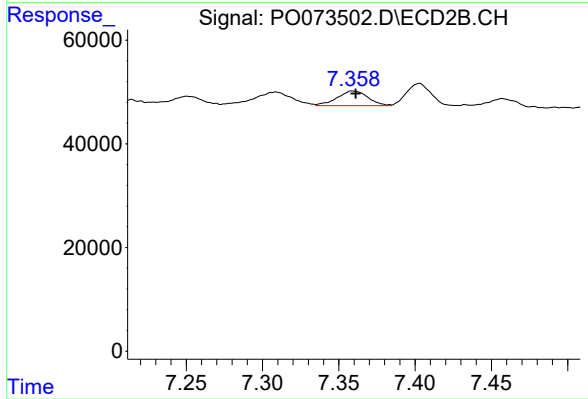
Instrument :
 ECD_O
 ClientSampled :



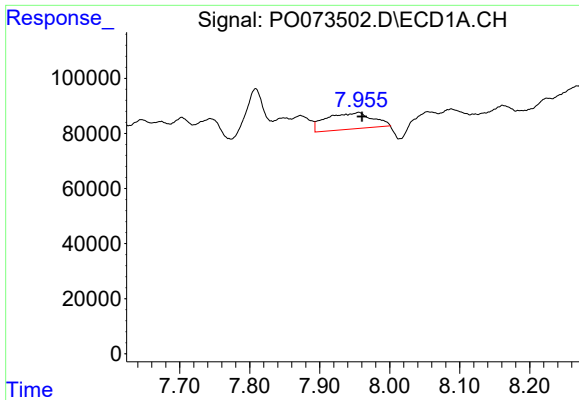
#29 AR-1254-4
 R.T.: 6.919 min
 Delta R.T.: -0.015 min
 Response: 112536
 Conc: 38.98 ng/ml



#30 AR-1254-5
 R.T.: 8.516 min
 Delta R.T.: -0.003 min
 Response: 39747
 Conc: 8.35 ng/ml



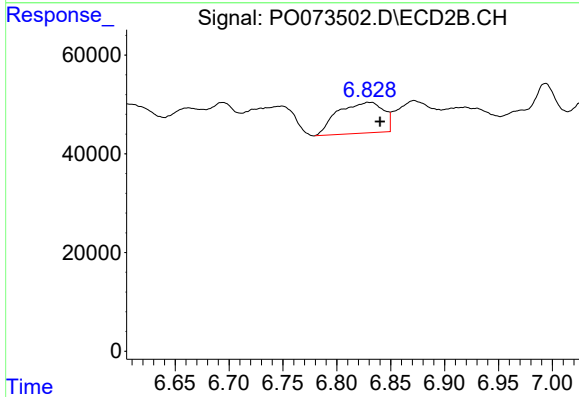
#30 AR-1254-5
 R.T.: 7.359 min
 Delta R.T.: -0.002 min
 Response: 39380
 Conc: 10.66 ng/ml



#31 AR-1260-1

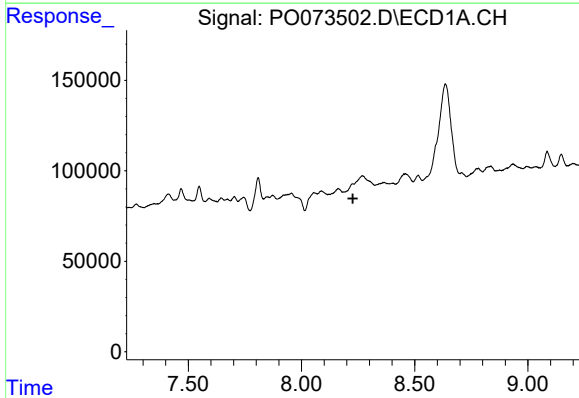
R.T.: 7.956 min
 Delta R.T.: -0.005 min
 Response: 280810
 Conc: 69.59 ng/ml

Instrument :
 ECD_O
 ClientSampled :



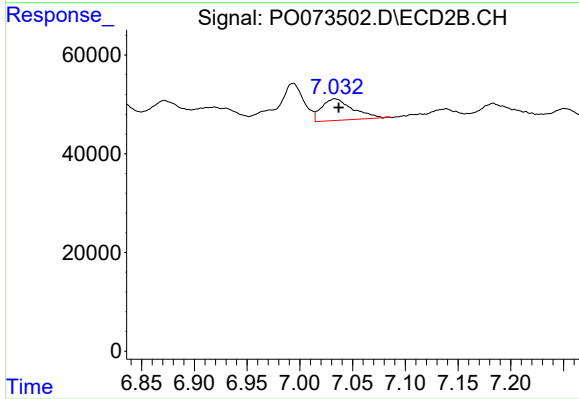
#31 AR-1260-1

R.T.: 6.830 min
 Delta R.T.: -0.010 min
 Response: 184402
 Conc: 68.63 ng/ml



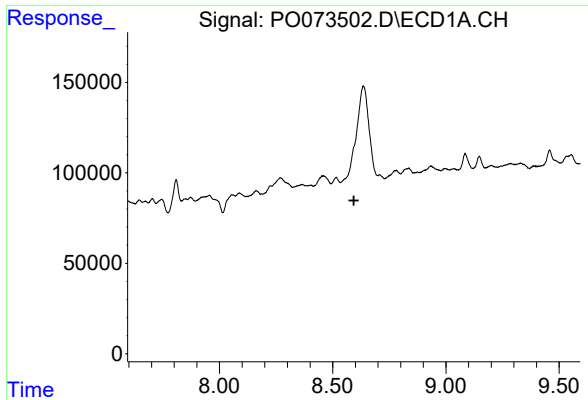
#32 AR-1260-2

R.T.: 0.000 min
 Exp R.T. : 8.227 min
 Response: 0
 Conc: N.D.



#32 AR-1260-2

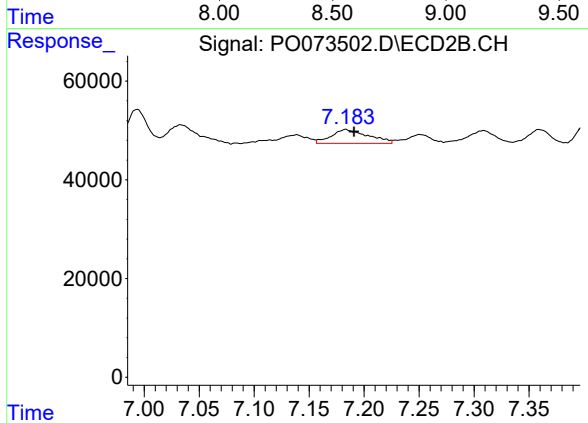
R.T.: 7.033 min
 Delta R.T.: -0.004 min
 Response: 88083
 Conc: 26.41 ng/ml



#33 AR-1260-3

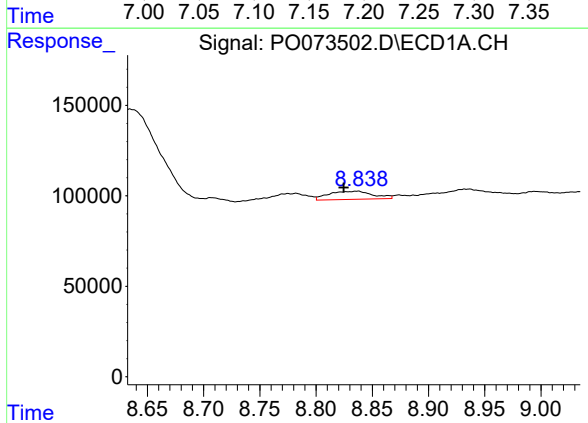
R.T.: 0.000 min
 Exp R.T.: 8.594 min
 Response: 0
 Conc: N.D.

Instrument :
 ECD_O
 ClientSampled :



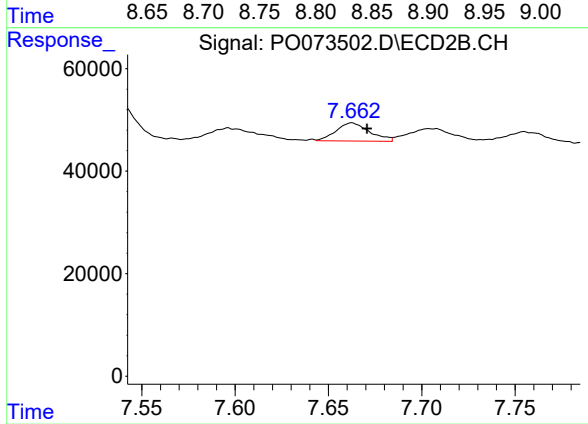
#33 AR-1260-3

R.T.: 7.183 min
 Delta R.T.: -0.008 min
 Response: 65522
 Conc: 21.21 ng/ml



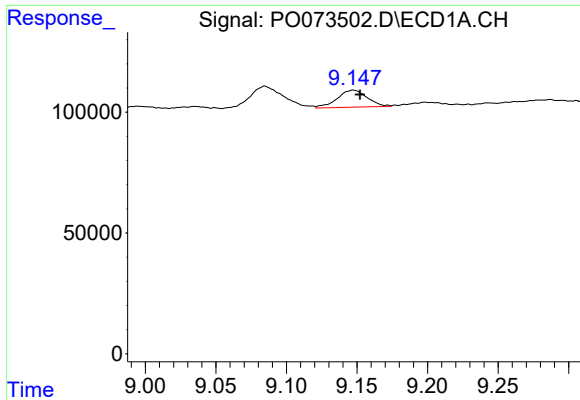
#34 AR-1260-4

R.T.: 8.837 min
 Delta R.T.: 0.012 min
 Response: 123989
 Conc: 28.73 ng/ml



#34 AR-1260-4

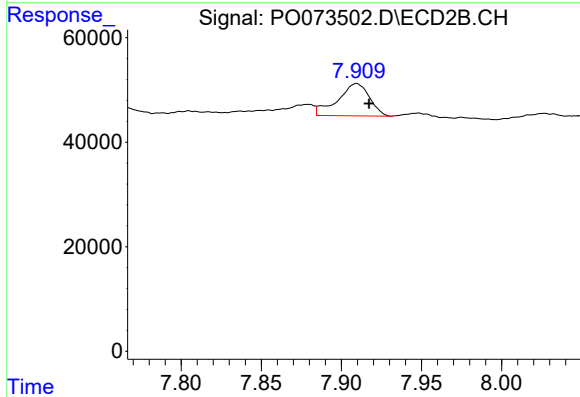
R.T.: 7.663 min
 Delta R.T.: -0.008 min
 Response: 44350
 Conc: 18.02 ng/ml



#35 AR-1260-5

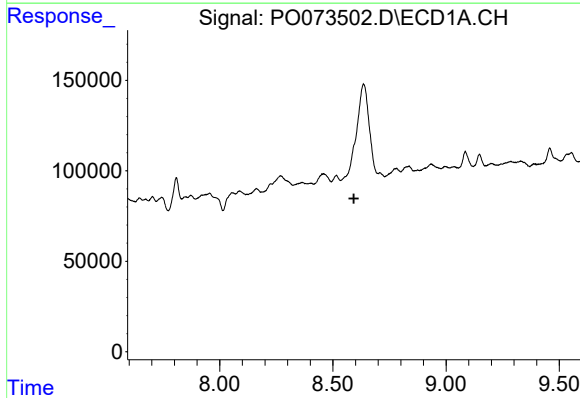
R.T.: 9.147 min
 Delta R.T.: -0.005 min
 Response: 103789
 Conc: 10.51 ng/ml

Instrument :
 ECD_O
 ClientSampled :



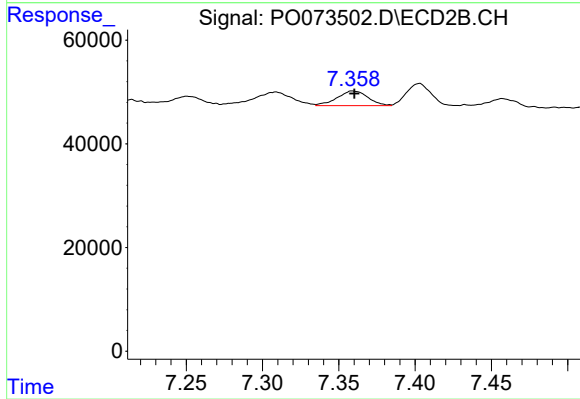
#35 AR-1260-5

R.T.: 7.909 min
 Delta R.T.: -0.008 min
 Response: 85118
 Conc: 13.74 ng/ml



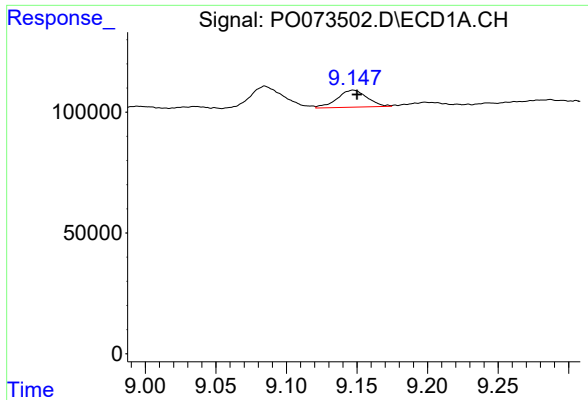
#36 AR-1262-1

R.T.: 0.000 min
 Exp R.T. : 8.592 min
 Response: 0
 Conc: N.D.



#36 AR-1262-1

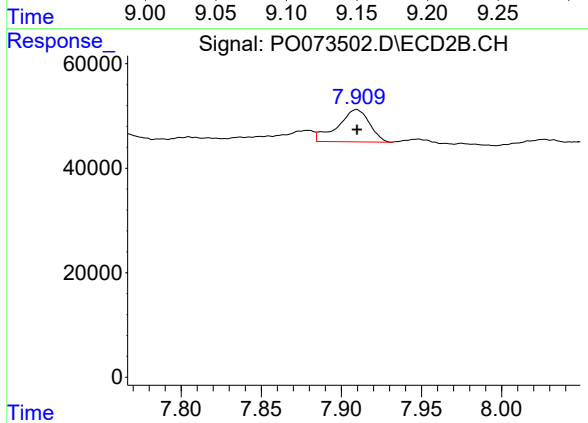
R.T.: 7.359 min
 Delta R.T.: -0.001 min
 Response: 39380
 Conc: 20.32 ng/ml



#37 AR-1262-2

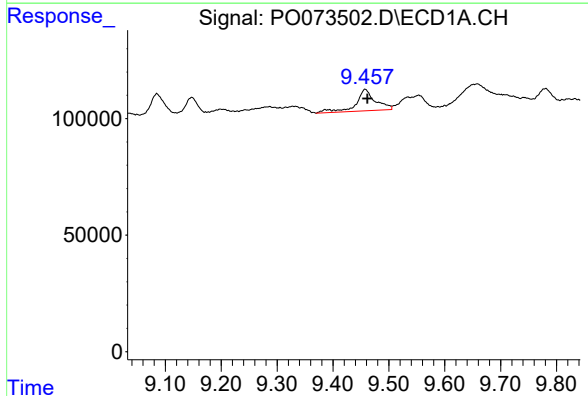
R.T.: 9.147 min
 Delta R.T.: -0.003 min
 Response: 103789
 Conc: 9.59 ng/ml

Instrument :
 ECD_O
 ClientSampleId :



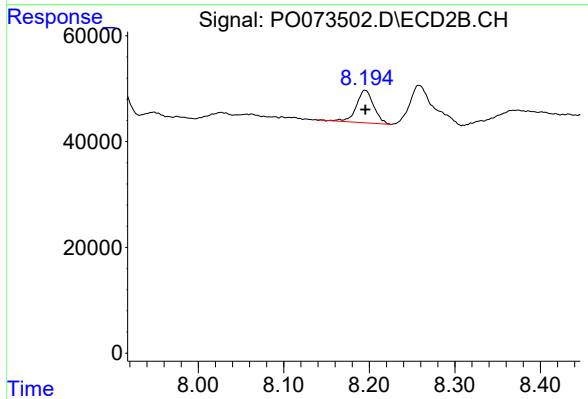
#37 AR-1262-2

R.T.: 7.909 min
 Delta R.T.: 0.000 min
 Response: 85118
 Conc: 12.98 ng/ml



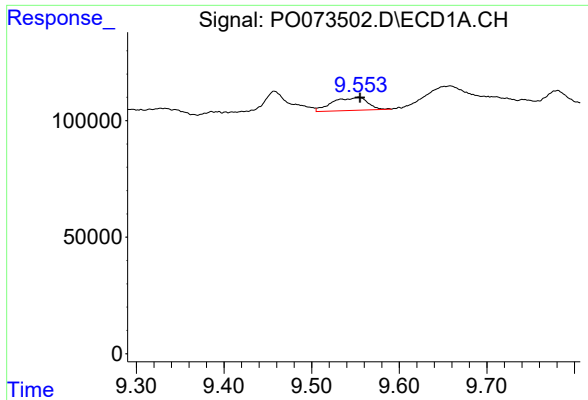
#38 AR-1262-3

R.T.: 9.458 min
 Delta R.T.: -0.004 min
 Response: 222528
 Conc: 30.32 ng/ml



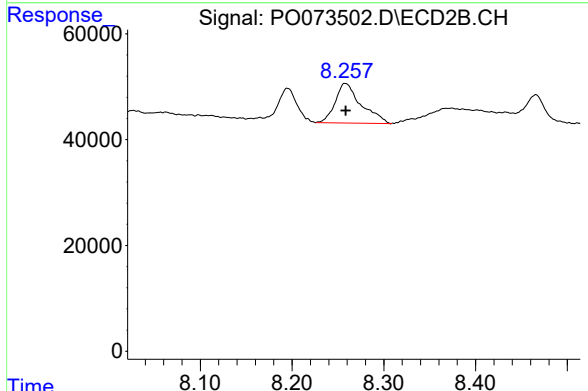
#38 AR-1262-3

R.T.: 8.195 min
 Delta R.T.: 0.000 min
 Response: 87215
 Conc: 32.32 ng/ml

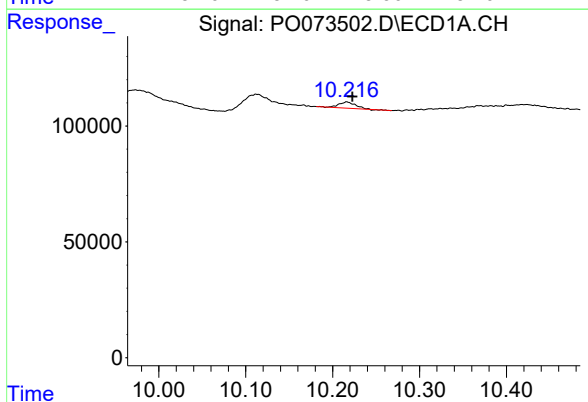


#39 AR-1262-4
 R.T.: 9.553 min
 Delta R.T.: -0.002 min
 Response: 154873
 Conc: 28.14 ng/ml

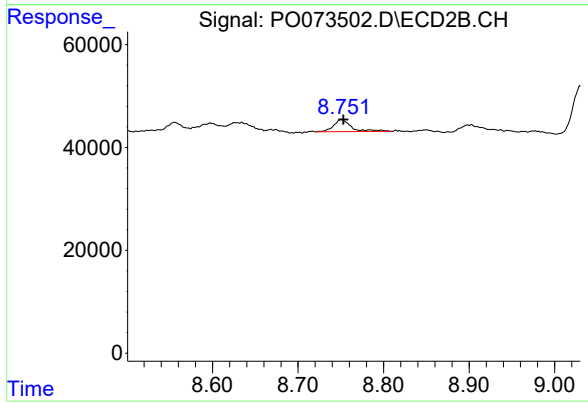
Instrument :
 ECD_O
 ClientSampled :



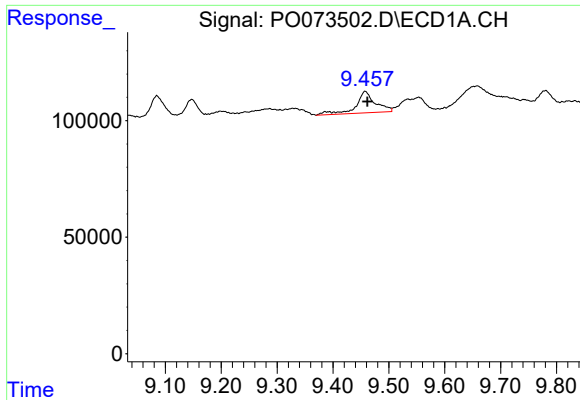
#39 AR-1262-4
 R.T.: 8.258 min
 Delta R.T.: 0.000 min
 Response: 146966
 Conc: 30.78 ng/ml



#40 AR-1262-5
 R.T.: 10.216 min
 Delta R.T.: -0.006 min
 Response: 35865
 Conc: 9.21 ng/ml

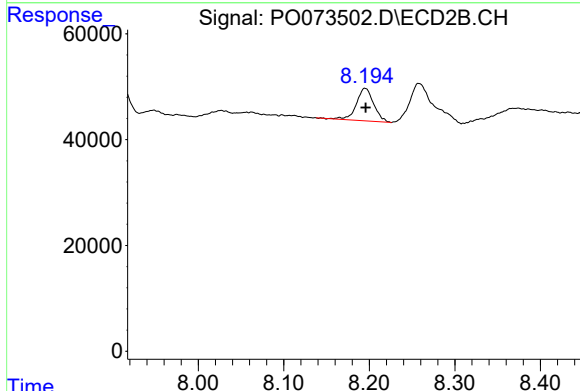


#40 AR-1262-5
 R.T.: 8.751 min
 Delta R.T.: -0.002 min
 Response: 34217
 Conc: 14.96 ng/ml

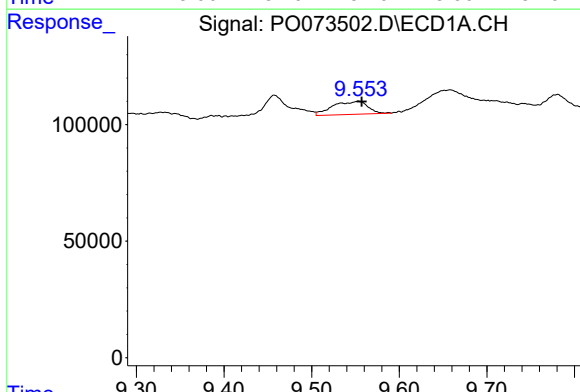


#41 AR-1268-1
 R.T.: 9.458 min
 Delta R.T.: -0.004 min
 Response: 222528
 Conc: 15.93 ng/ml

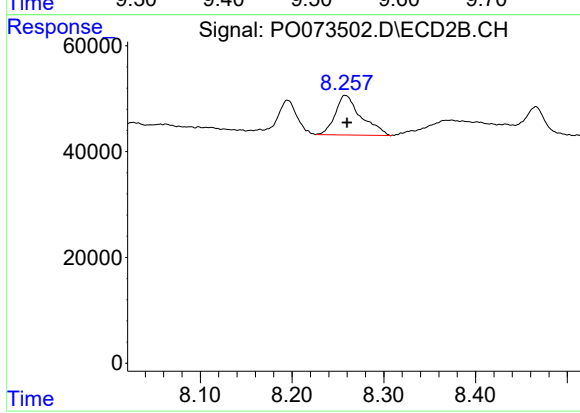
Instrument :
 ECD_O
 ClientSampleId :



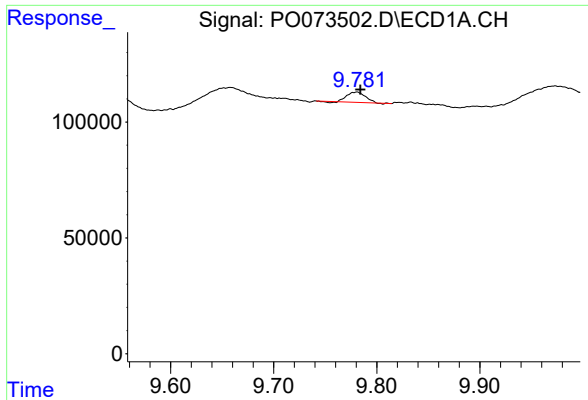
#41 AR-1268-1
 R.T.: 8.195 min
 Delta R.T.: 0.000 min
 Response: 87215
 Conc: 10.71 ng/ml



#42 AR-1268-2
 R.T.: 9.553 min
 Delta R.T.: -0.004 min
 Response: 154873
 Conc: 12.75 ng/ml

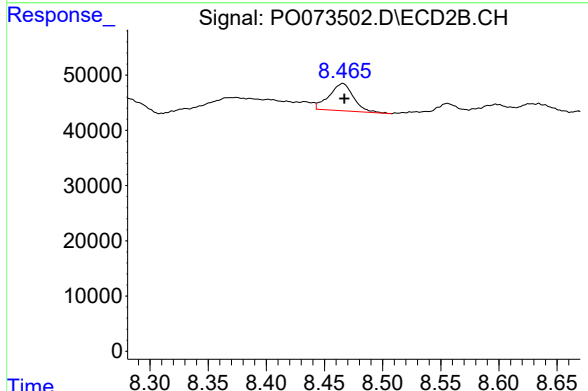


#42 AR-1268-2
 R.T.: 8.258 min
 Delta R.T.: -0.002 min
 Response: 146966
 Conc: 20.12 ng/ml

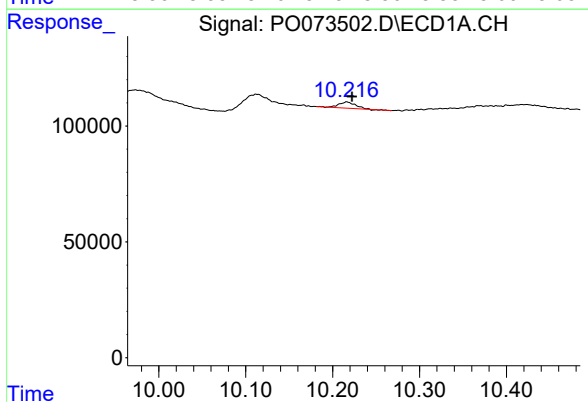


#43 AR-1268-3
 R.T.: 9.781 min
 Delta R.T.: -0.003 min
 Response: 51615
 Conc: 4.90 ng/ml

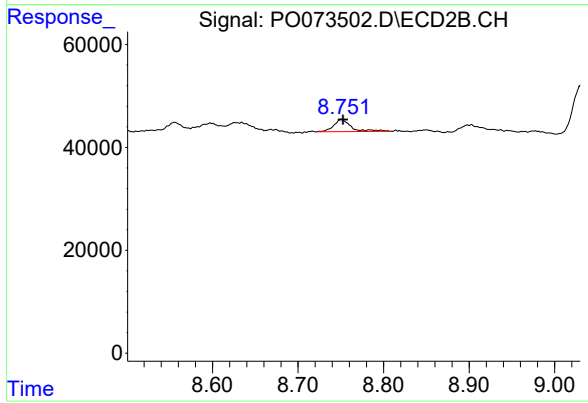
Instrument :
 ECD_O
 ClientSampleId :



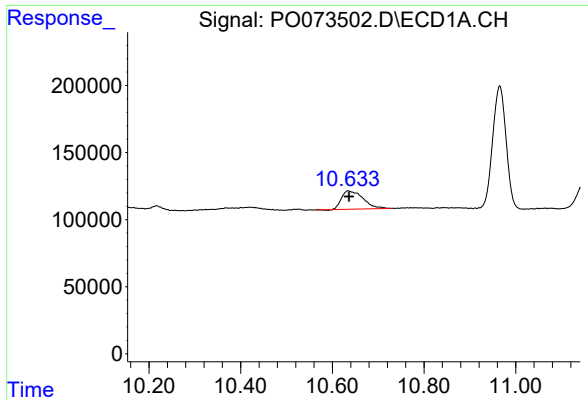
#43 AR-1268-3
 R.T.: 8.466 min
 Delta R.T.: -0.001 min
 Response: 71871
 Conc: 11.49 ng/ml



#44 AR-1268-4
 R.T.: 10.216 min
 Delta R.T.: -0.006 min
 Response: 35865
 Conc: 7.95 ng/ml



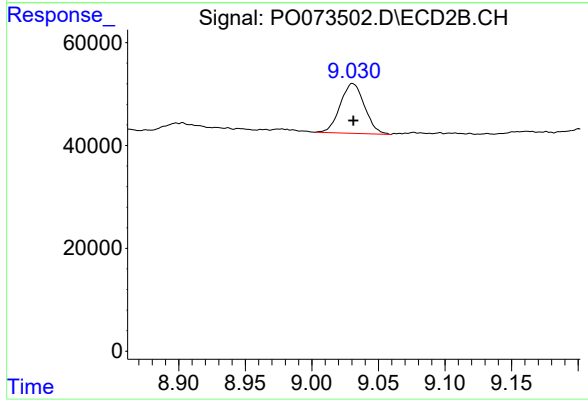
#44 AR-1268-4
 R.T.: 8.751 min
 Delta R.T.: -0.002 min
 Response: 34217
 Conc: 12.77 ng/ml



#45 AR-1268-5

R.T.: 10.634 min
Delta R.T.: -0.002 min
Response: 446237
Conc: 14.02 ng/ml

Instrument :
ECD_O
ClientSampleId :



#45 AR-1268-5

R.T.: 9.031 min
Delta R.T.: 0.000 min
Response: 123183
Conc: 6.75 ng/ml