

Data Path : Z:\pestpcbsrv\HPCHEM1\ECD_0\Data\PO112420\
 Data File : PO073503.D
 Signal(s) : Signal #1: ECD1A.CH Signal #2: ECD2B.CH
 Acq On : 24 Nov 2020 11:30
 Operator : DD\AJ
 Sample : L4836-03
 Misc :
 ALS Vial : 10 Sample Multiplier: 1

Instrument :
 ECD_O
 ClientSampled :

Integration File signal 1: autoint1.e
 Integration File signal 2: autoint2.e
 Quant Time: Nov 25 10:28:21 2020
 Quant Method : Z:\pestpcbsrv\HPCHEM1\ECD_0\methods\PO112320.M
 Quant Title : GC EXTRACTABLES
 QLast Update : Wed Nov 25 10:04:26 2020
 Response via : Initial Calibration
 Integrator: ChemStation 6890 Scale Mode: Small noise peaks clipped

Volume Inj. : 2 µl
 Signal #1 Phase : ZB-MR1 Signal #2 Phase: ZB-MR2
 Signal #1 Info : 30Mx0.32mmx 0.50µ Signal #2 Info : 30M x 0.32mm x 0.25µm

Compound	RT#1	RT#2	Resp#1	Resp#2	ng/ml	ng/ml
System Monitoring Compounds						
1) SA Tetrachlo...	4.941	4.007	1751675	1169136	20.940	23.846
2) SA Decachlor...	10.965	9.272	1720146	937101	20.863	20.438
Target Compounds						
3) L1 AR-1016-1	6.259	5.237f	116015	36012	35.231	17.677 #
4) L1 AR-1016-2	6.289	0.000	53385	0	11.597	N.D. #
5) L1 AR-1016-3	6.354	5.479	21809	166021	7.965	111.646 #
6) L1 AR-1016-4	6.465	0.000	49387	0	21.638	N.D. #
7) L1 AR-1016-5	6.769	5.742	469498	153060	208.819	101.681 #
8) L2 AR-1221-1	5.194	4.291f	153002	67731	154.243	120.172
9) L2 AR-1221-2	5.297	4.368	103113	105194	146.608	260.230 #
10) L2 AR-1221-3	5.406f	0.000	433533	0	193.360	N.D. #
11) L3 AR-1232-1	5.406f	0.000	433533	0	234.916	N.D. #
12) L3 AR-1232-2	5.969	0.000	209332	0	219.973	N.D. #
13) L3 AR-1232-3	6.289	5.479	53385	166021	27.291	264.653 #
14) L3 AR-1232-4	6.465	5.573	49387	106378	49.951	197.314 #
15) L3 AR-1232-5	6.564	5.742	93978	153060	139.588	259.083 #
16) L4 AR-1242-1	6.259	5.237f	116015	36012	43.988	22.019 #
17) L4 AR-1242-2	6.289	0.000	53385	0	14.604	N.D. #
18) L4 AR-1242-3	6.354	5.479	21809	166021	9.889	138.281 #
19) L4 AR-1242-4	6.465	5.573	49387	106378	26.607	96.787 #
20) L4 AR-1242-5	7.248	6.117	66639	200817	31.682	129.695 #
21) L5 AR-1248-1	6.259	5.237f	116015	36012	58.034	28.716 #
22) L5 AR-1248-2	6.564	0.000	93978	0	36.352	N.D. #
23) L5 AR-1248-3	6.769	5.573	469498	106378	153.202	62.338 #
24) L5 AR-1248-4	7.207	5.742	120912	153060	32.414	74.457 #
25) L5 AR-1248-5	7.248	6.162	66639	199055	18.625	89.643 #
26) L6 AR-1254-1	7.180	6.117	263097	200817	76.076	64.492
27) L6 AR-1254-2	7.408	6.279	531542	105632	97.567	38.693 #
28) L6 AR-1254-3	7.809f	6.695	355119	147951	62.662	34.983 #
29) L6 AR-1254-4	8.087	6.933	175878	97155	36.353	33.652
30) L6 AR-1254-5	8.512	7.357	247090	209893	51.906	56.833
31) L7 AR-1260-1	7.935f	6.828	607763	322544	150.614	120.049
32) L7 AR-1260-2	8.212f	7.041	357478	386489	65.045	115.872 #
33) L7 AR-1260-3	8.591	7.183	273986	167155	61.743	54.110
34) L7 AR-1260-4	8.819	7.663	225288	105825	52.196	43.004
35) L7 AR-1260-5	9.147	7.909	430928	248222	43.639	40.068
36) L8 AR-1262-1	8.591	7.357	273986	209893	43.884	108.307 #
37) L8 AR-1262-2	9.147	7.909	430928	248222	39.837	37.859
38) L8 AR-1262-3	9.457	8.196	539536	183927	73.506	68.168
39) L8 AR-1262-4	9.550	8.258	144650	291703	26.286	61.093 #
40) L8 AR-1262-5	10.217	8.752	128209	66928	32.938	29.264
41) L9 AR-1268-1	9.457	8.196	539536	183927	38.626	22.578 #

Data Path : Z:\pestpcbsrv\HPCHEM1\ECD_0\Data\PO112420\
 Data File : PO073503.D
 Signal(s) : Signal #1: ECD1A.CH Signal #2: ECD2B.CH
 Acq On : 24 Nov 2020 11:30
 Operator : DD\AJ
 Sample : L4836-03
 Misc :
 ALS Vial : 10 Sample Multiplier: 1

Instrument :
 ECD_0
 ClientSampleId :

Integration File signal 1: autoint1.e
 Integration File signal 2: autoint2.e
 Quant Time: Nov 25 10:28:21 2020
 Quant Method : Z:\pestpcbsrv\HPCHEM1\ECD_0\methods\PO112320.M
 Quant Title : GC EXTRACTABLES
 QLast Update : Wed Nov 25 10:04:26 2020
 Response via : Initial Calibration
 Integrator: ChemStation 6890 Scale Mode: Small noise peaks clipped

Volume Inj. : 2 µl
 Signal #1 Phase : ZB-MR1 Signal #2 Phase: ZB-MR2
 Signal #1 Info : 30Mx0.32mmx 0.50µ Signal #2 Info : 30M x 0.32mm x 0.25µm

	Compound	RT#1	RT#2	Resp#1	Resp#2	ng/ml	ng/ml
42)	L9 AR-1268-2	9.550	8.258	144650	291703	11.907	39.939 #
43)	L9 AR-1268-3	9.778	8.456	-7167	230797	N.D.	36.900 #
44)	L9 AR-1268-4	10.217	8.752	128209	66928	28.420	24.986
45)	L9 AR-1268-5	10.631	9.030	578379	218123	18.172	11.957 #

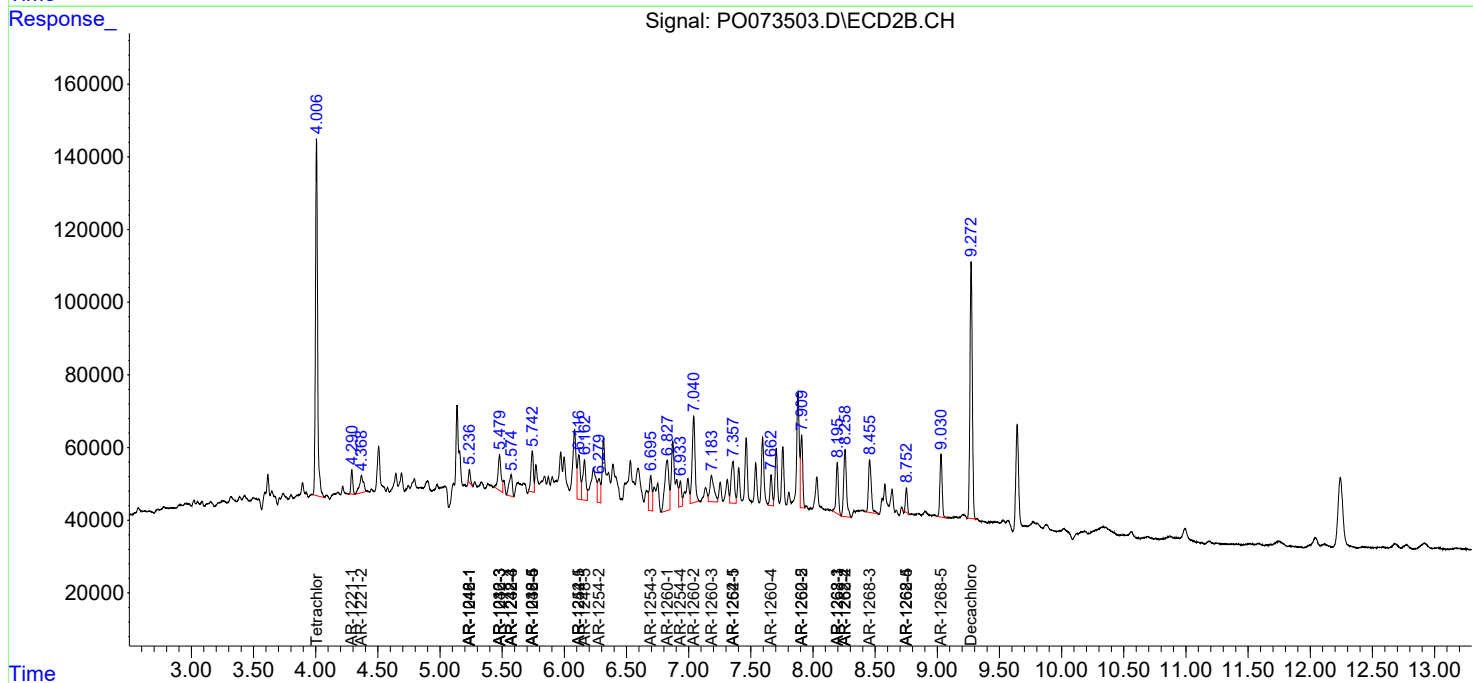
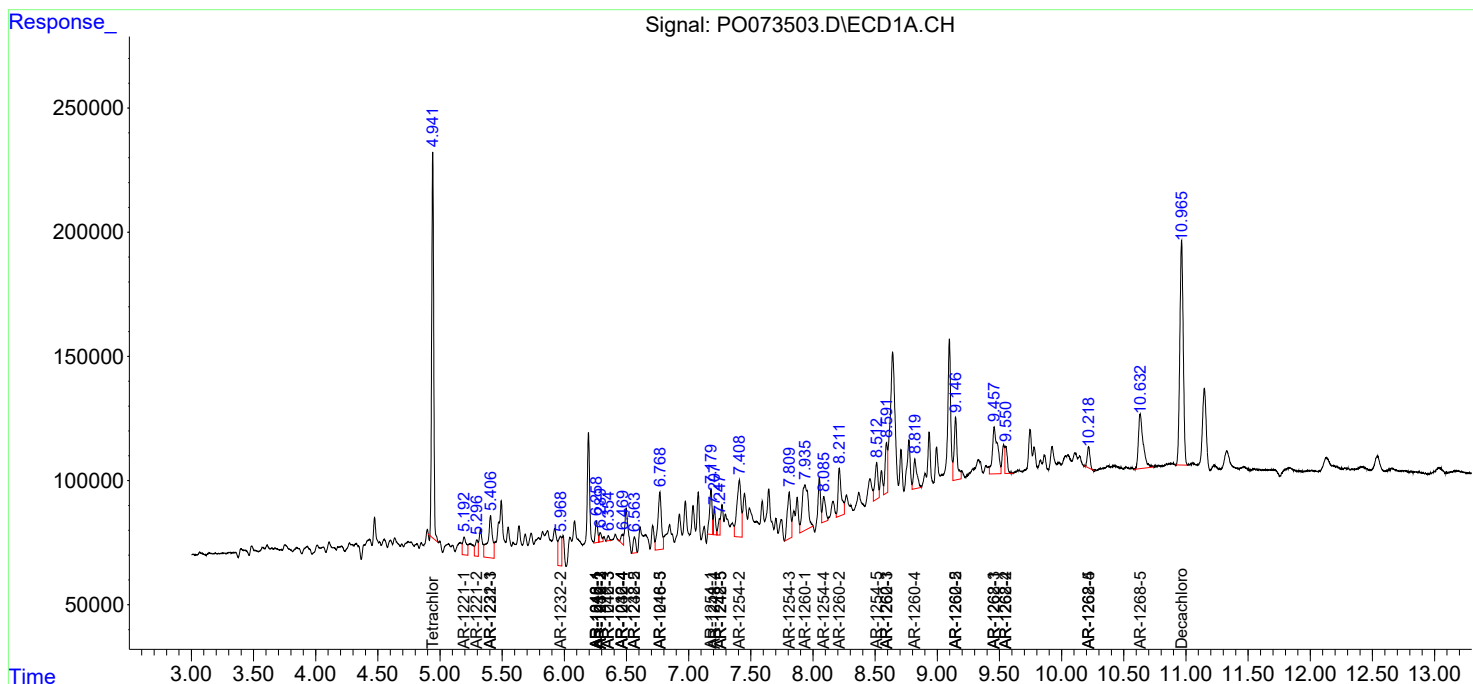
(f)=RT Delta > 1/2 Window (#)=Amounts differ by > 25% (m)=manual int.

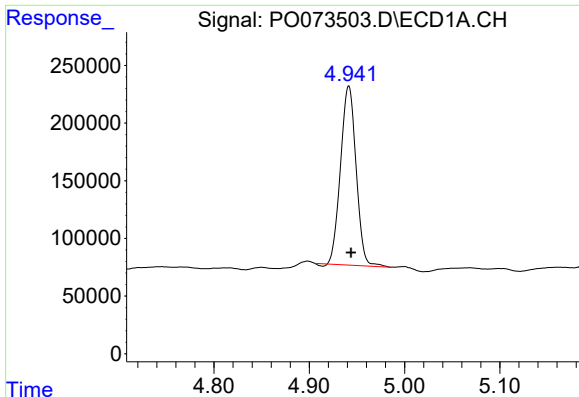
Data Path : Z:\pestpcbsrv\HPCHEM1\ECD_O\Data\PO112420\
 Data File : PO073503.D
 Signal(s) : Signal #1: ECD1A.CH Signal #2: ECD2B.CH
 Acq On : 24 Nov 2020 11:30
 Operator : DD\AJ
 Sample : L4836-03
 Misc :
 ALS Vial : 10 Sample Multiplier: 1

Instrument :
 ECD_O
 ClientSampled :

Integration File signal 1: autoint1.e
 Integration File signal 2: autoint2.e
 Quant Time: Nov 25 10:28:21 2020
 Quant Method : Z:\pestpcbsrv\HPCHEM1\ECD_O\methods\PO112320.M
 Quant Title : GC EXTRACTABLES
 QLast Update : Wed Nov 25 10:04:26 2020
 Response via : Initial Calibration
 Integrator: ChemStation 6890 Scale Mode: Small noise peaks clipped

Volume Inj. : 2 µl
 Signal #1 Phase : ZB-MR1 Signal #2 Phase: ZB-MR2
 Signal #1 Info : 30Mx0.32mmx 0.50µ Signal #2 Info : 30M x 0.32mm x 0.25µm

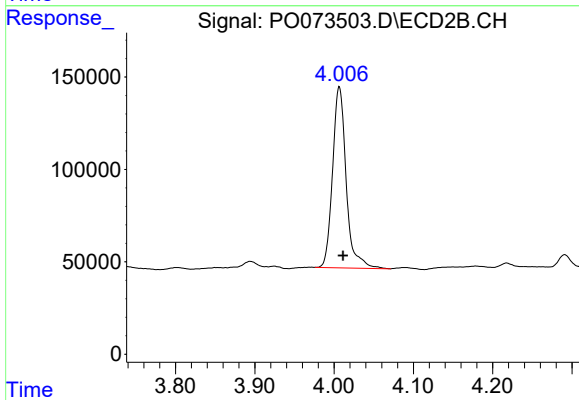




#1 Tetrachloro-m-xylene

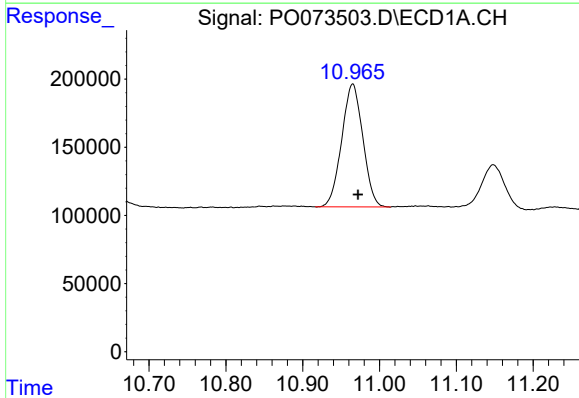
R.T.: 4.941 min
Delta R.T.: -0.003 min
Response: 1751675
Conc: 20.94 ng/ml

Instrument :
ECD_O
ClientSampleId :



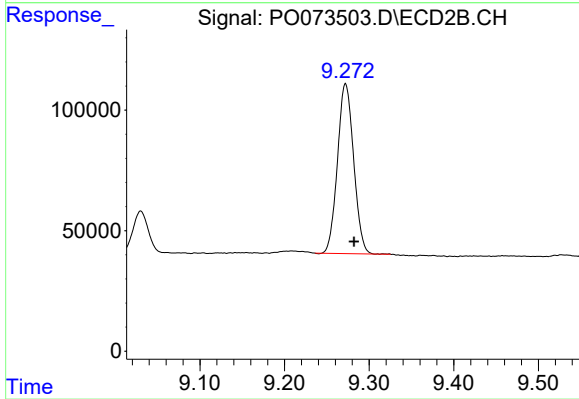
#1 Tetrachloro-m-xylene

R.T.: 4.007 min
Delta R.T.: -0.005 min
Response: 1169136
Conc: 23.85 ng/ml



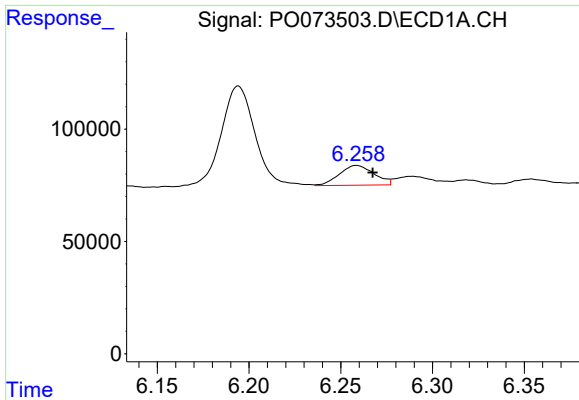
#2 Decachlorobiphenyl

R.T.: 10.965 min
Delta R.T.: -0.007 min
Response: 1720146
Conc: 20.86 ng/ml



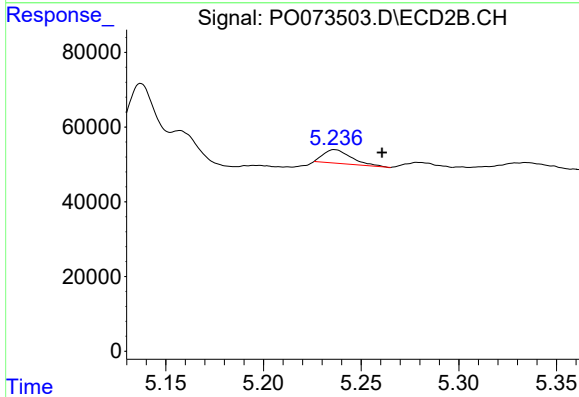
#2 Decachlorobiphenyl

R.T.: 9.272 min
Delta R.T.: -0.010 min
Response: 937101
Conc: 20.44 ng/ml

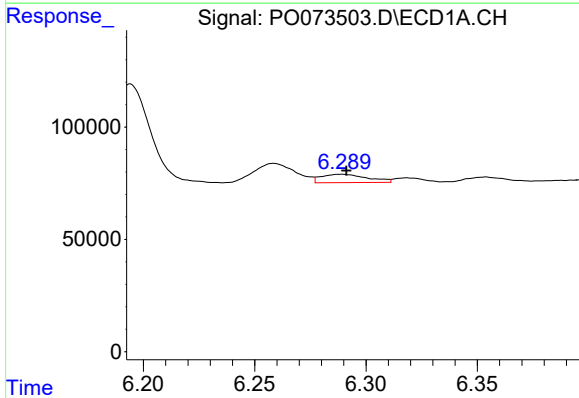


#3 AR-1016-1
 R.T.: 6.259 min
 Delta R.T.: -0.009 min
 Response: 116015
 Conc: 35.23 ng/ml

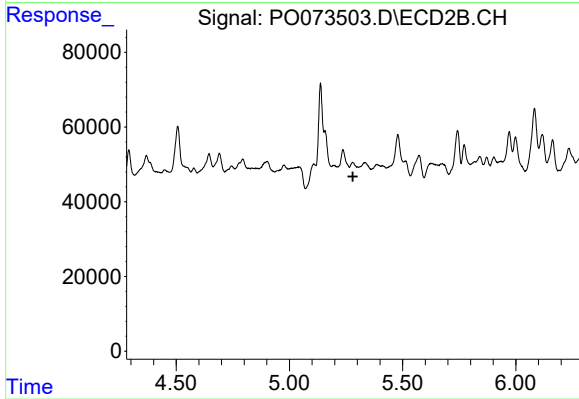
Instrument :
 ECD_O
 ClientSampleId :



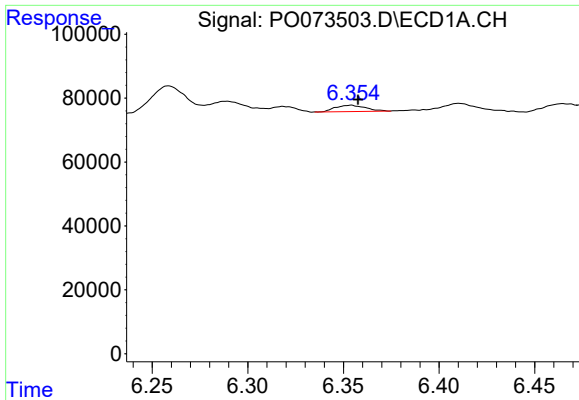
#3 AR-1016-1
 R.T.: 5.237 min
 Delta R.T.: -0.024 min
 Response: 36012
 Conc: 17.68 ng/ml



#4 AR-1016-2
 R.T.: 6.289 min
 Delta R.T.: -0.003 min
 Response: 53385
 Conc: 11.60 ng/ml

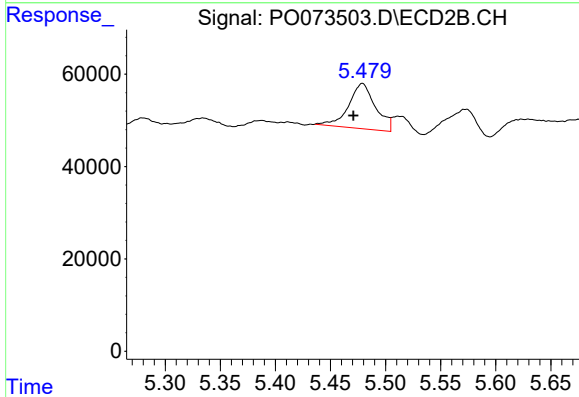


#4 AR-1016-2
 R.T.: 0.000 min
 Exp R.T. : 5.281 min
 Response: 0
 Conc: N.D.

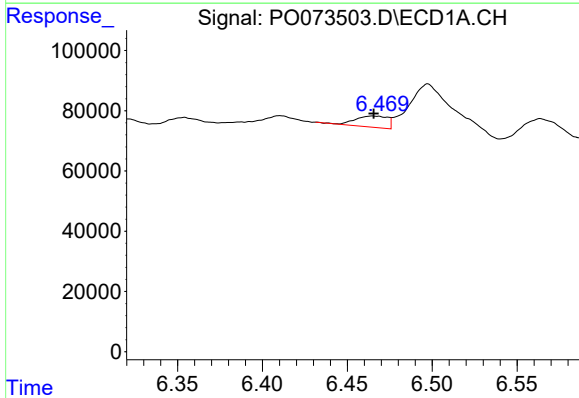


#5 AR-1016-3
 R.T.: 6.354 min
 Delta R.T.: -0.004 min
 Response: 21809
 Conc: 7.96 ng/ml

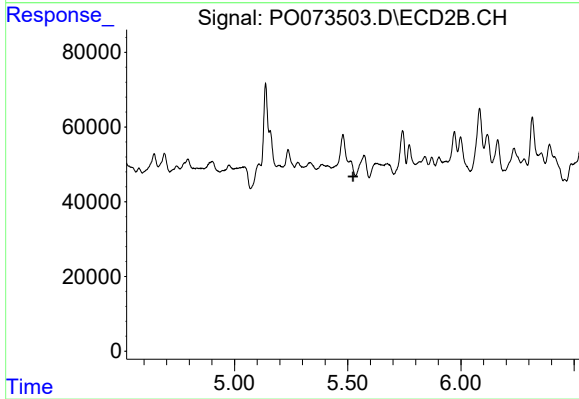
Instrument :
 ECD_O
 ClientSampleId :



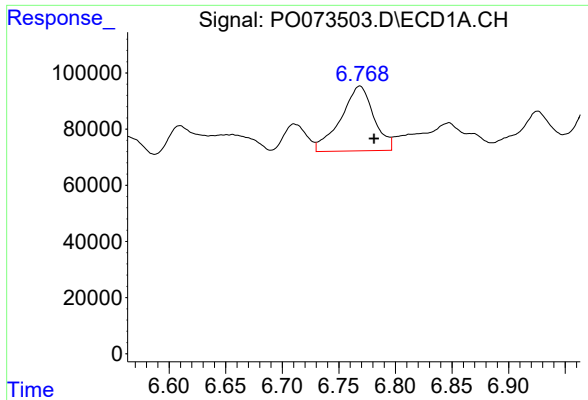
#5 AR-1016-3
 R.T.: 5.479 min
 Delta R.T.: 0.008 min
 Response: 166021
 Conc: 111.65 ng/ml



#6 AR-1016-4
 R.T.: 6.465 min
 Delta R.T.: 0.000 min
 Response: 49387
 Conc: 21.64 ng/ml



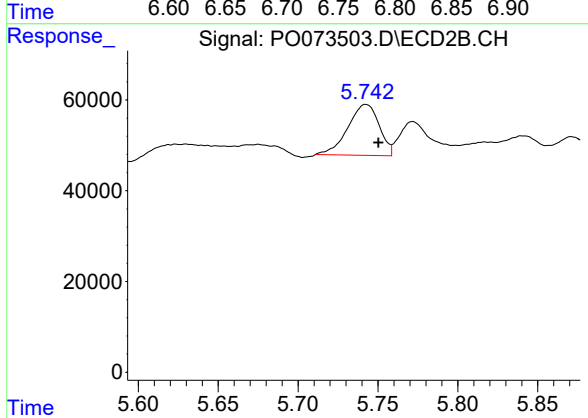
#6 AR-1016-4
 R.T.: 0.000 min
 Exp R.T. : 5.523 min
 Response: 0
 Conc: N.D.



#7 AR-1016-5

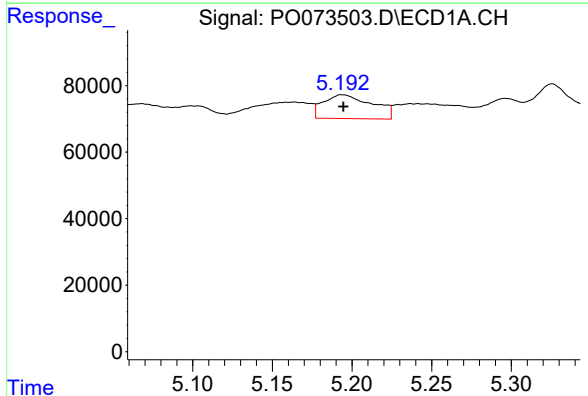
R.T.: 6.769 min
 Delta R.T.: -0.013 min
 Response: 469498
 Conc: 208.82 ng/ml

Instrument :
 ECD_O
 ClientSampleId :



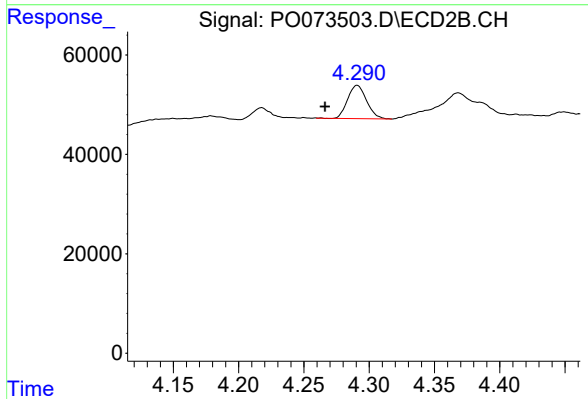
#7 AR-1016-5

R.T.: 5.742 min
 Delta R.T.: -0.008 min
 Response: 153060
 Conc: 101.68 ng/ml



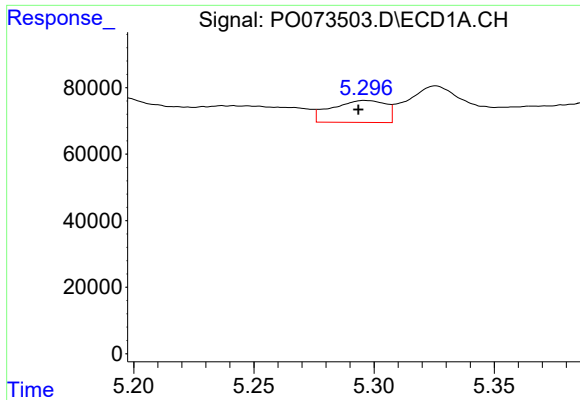
#8 AR-1221-1

R.T.: 5.194 min
 Delta R.T.: 0.000 min
 Response: 153002
 Conc: 154.24 ng/ml



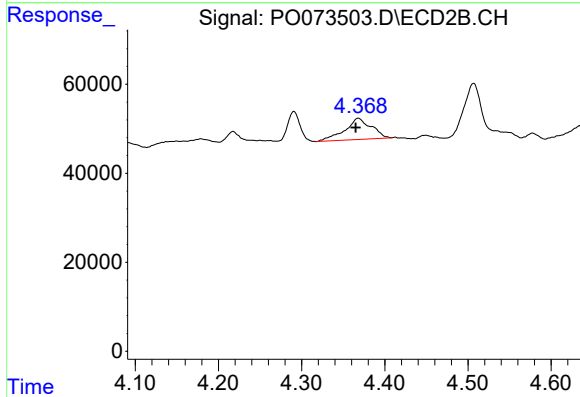
#8 AR-1221-1

R.T.: 4.291 min
 Delta R.T.: 0.025 min
 Response: 67731
 Conc: 120.17 ng/ml

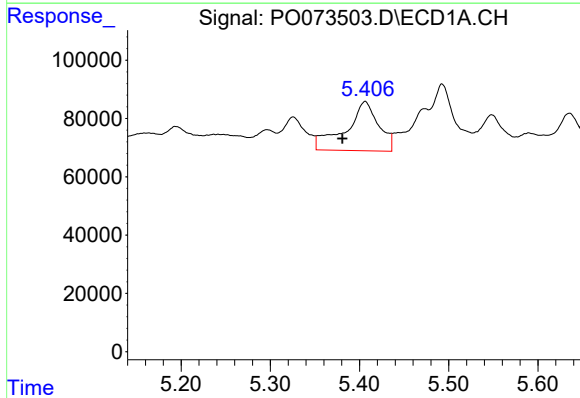


#9 AR-1221-2
 R.T.: 5.297 min
 Delta R.T.: 0.003 min
 Response: 103113
 Conc: 146.61 ng/ml

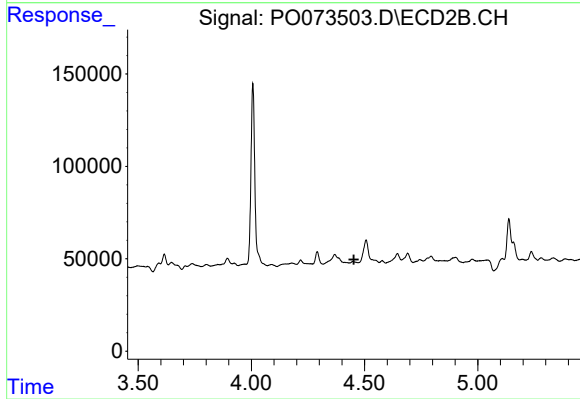
Instrument :
 ECD_O
 ClientSampled :



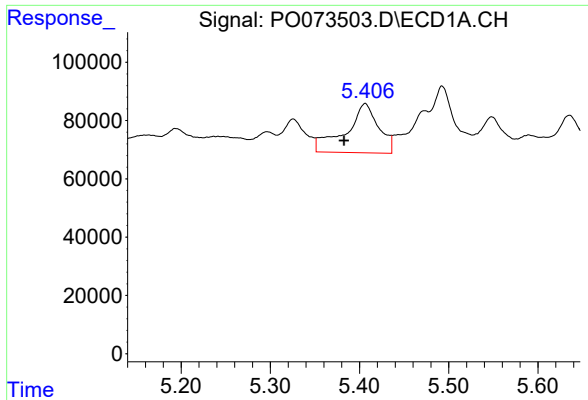
#9 AR-1221-2
 R.T.: 4.368 min
 Delta R.T.: 0.003 min
 Response: 105194
 Conc: 260.23 ng/ml



#10 AR-1221-3
 R.T.: 5.406 min
 Delta R.T.: 0.026 min
 Response: 433533
 Conc: 193.36 ng/ml



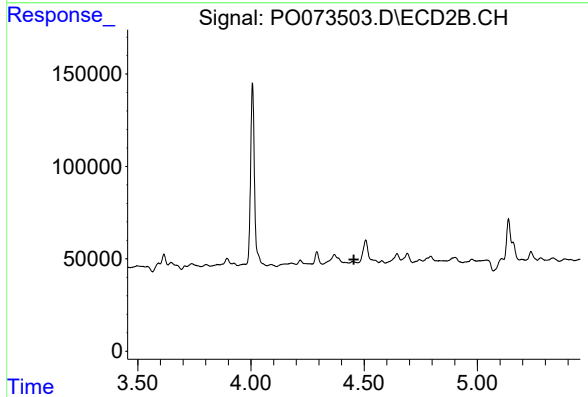
#10 AR-1221-3
 R.T.: 0.000 min
 Exp R.T. : 4.453 min
 Response: 0
 Conc: N.D.



#11 AR-1232-1

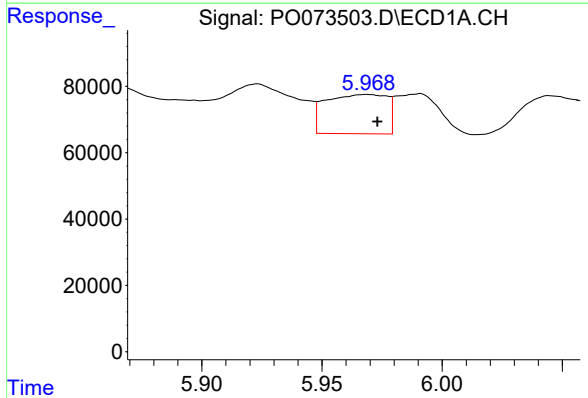
R.T.: 5.406 min
 Delta R.T.: 0.024 min
 Response: 433533
 Conc: 234.92 ng/ml

Instrument :
 ECD_O
 ClientSampled :



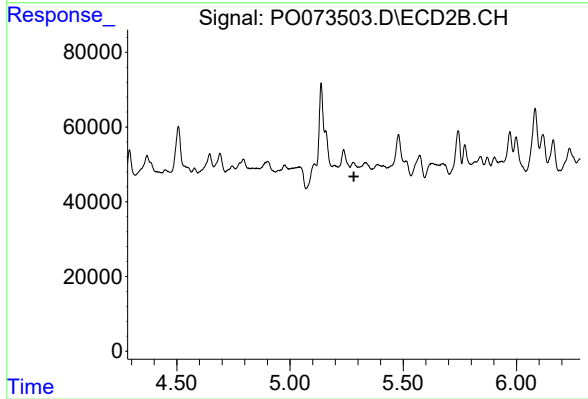
#11 AR-1232-1

R.T.: 0.000 min
 Exp R.T. : 4.454 min
 Response: 0
 Conc: N.D.



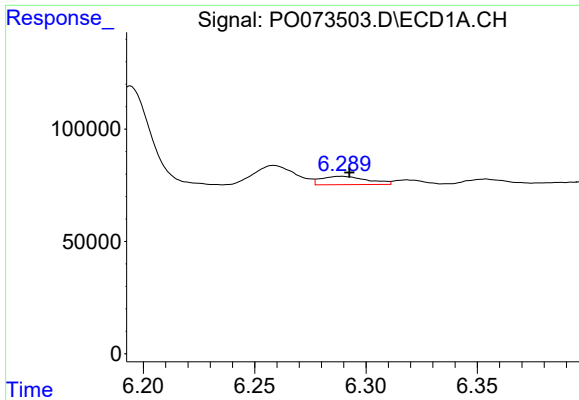
#12 AR-1232-2

R.T.: 5.969 min
 Delta R.T.: -0.004 min
 Response: 209332
 Conc: 219.97 ng/ml



#12 AR-1232-2

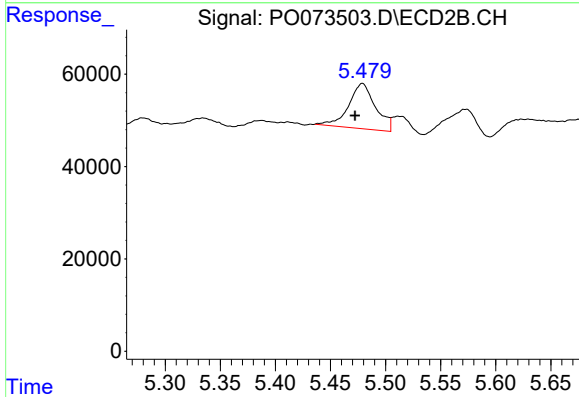
R.T.: 0.000 min
 Exp R.T. : 5.282 min
 Response: 0
 Conc: N.D.



#13 AR-1232-3

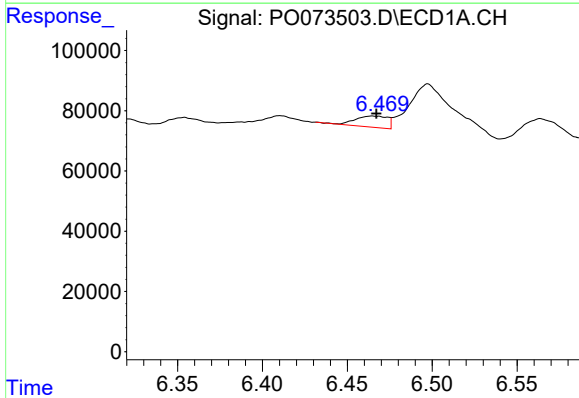
R.T.: 6.289 min
 Delta R.T.: -0.004 min
 Response: 53385
 Conc: 27.29 ng/ml

Instrument :
 ECD_O
 ClientSampled :



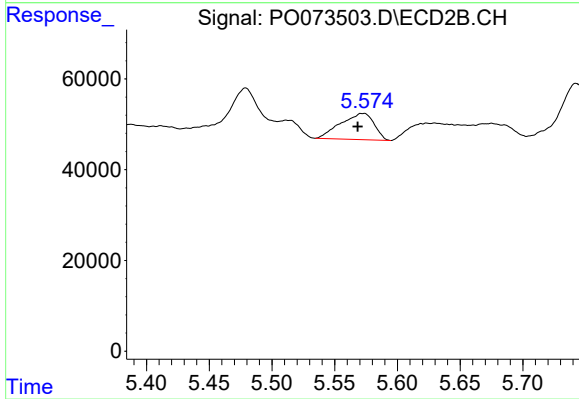
#13 AR-1232-3

R.T.: 5.479 min
 Delta R.T.: 0.007 min
 Response: 166021
 Conc: 264.65 ng/ml



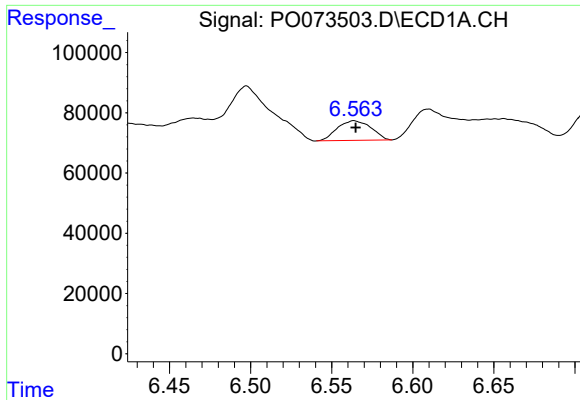
#14 AR-1232-4

R.T.: 6.465 min
 Delta R.T.: -0.002 min
 Response: 49387
 Conc: 49.95 ng/ml



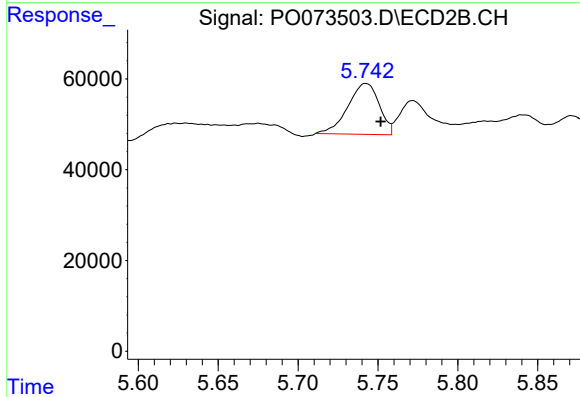
#14 AR-1232-4

R.T.: 5.573 min
 Delta R.T.: 0.004 min
 Response: 106378
 Conc: 197.31 ng/ml

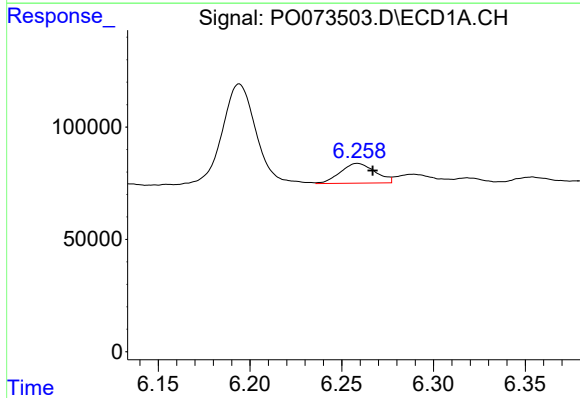


#15 AR-1232-5
 R.T.: 6.564 min
 Delta R.T.: -0.001 min
 Response: 93978
 Conc: 139.59 ng/ml

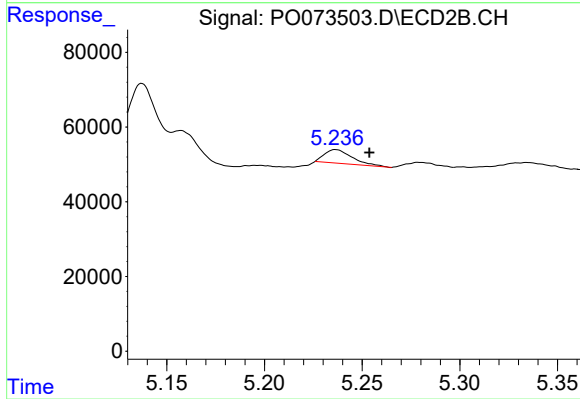
Instrument :
 ECD_O
 ClientSampleId :



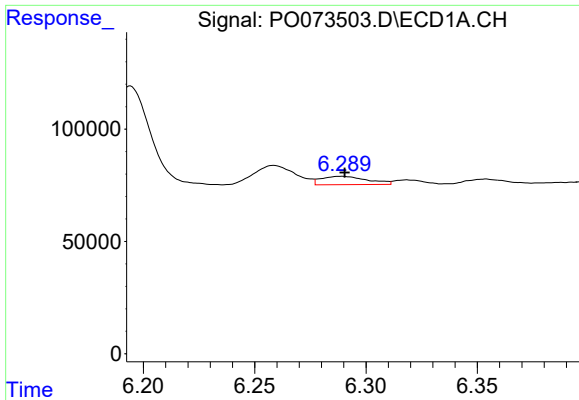
#15 AR-1232-5
 R.T.: 5.742 min
 Delta R.T.: -0.009 min
 Response: 153060
 Conc: 259.08 ng/ml



#16 AR-1242-1
 R.T.: 6.259 min
 Delta R.T.: -0.008 min
 Response: 116015
 Conc: 43.99 ng/ml

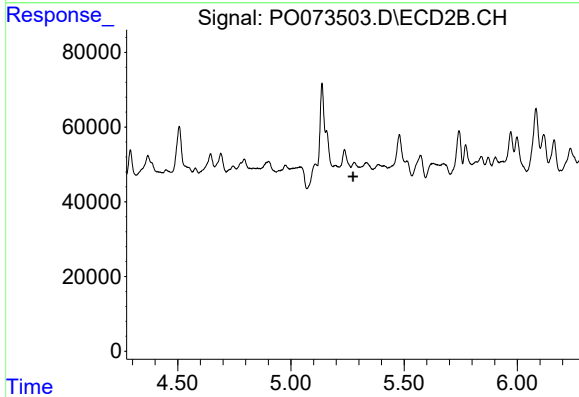


#16 AR-1242-1
 R.T.: 5.237 min
 Delta R.T.: -0.017 min
 Response: 36012
 Conc: 22.02 ng/ml

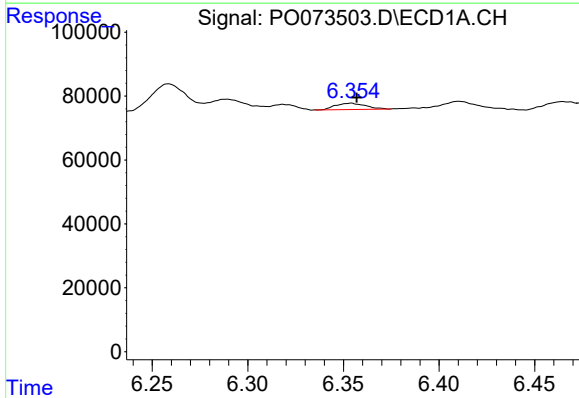


#17 AR-1242-2
 R.T.: 6.289 min
 Delta R.T.: -0.002 min
 Response: 53385
 Conc: 14.60 ng/ml

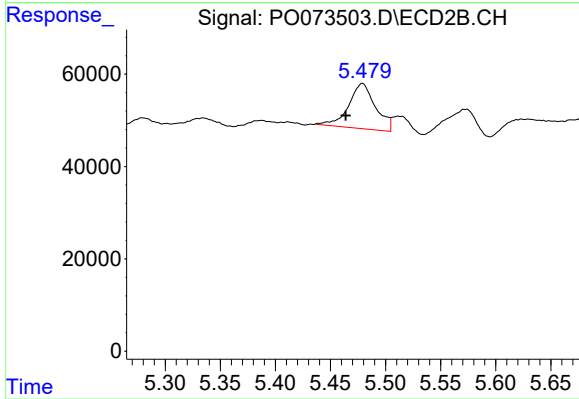
Instrument :
 ECD_O
 ClientSampled :



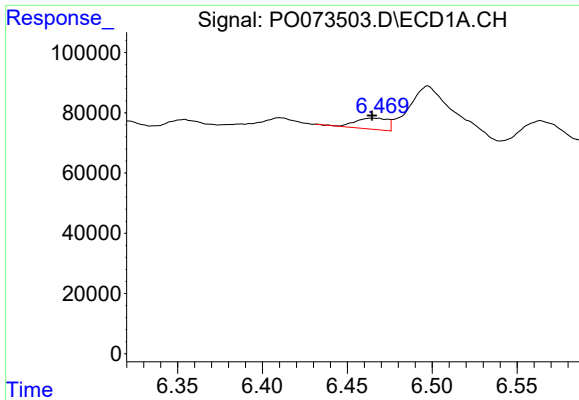
#17 AR-1242-2
 R.T.: 0.000 min
 Exp R.T. : 5.274 min
 Response: 0
 Conc: N.D.



#18 AR-1242-3
 R.T.: 6.354 min
 Delta R.T.: -0.003 min
 Response: 21809
 Conc: 9.89 ng/ml

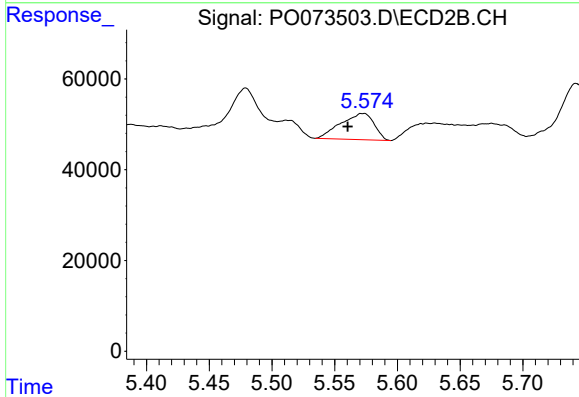


#18 AR-1242-3
 R.T.: 5.479 min
 Delta R.T.: 0.015 min
 Response: 166021
 Conc: 138.28 ng/ml

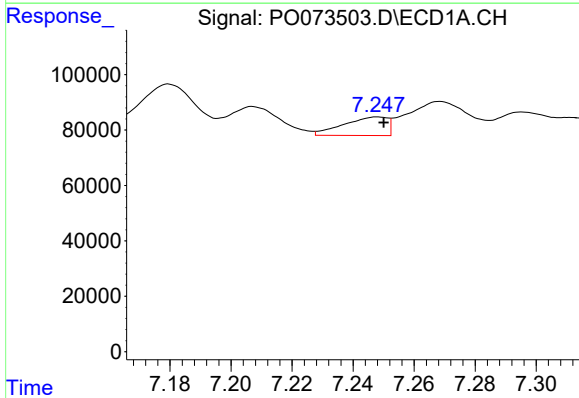


#19 AR-1242-4
 R.T.: 6.465 min
 Delta R.T.: 0.000 min
 Response: 49387
 Conc: 26.61 ng/ml

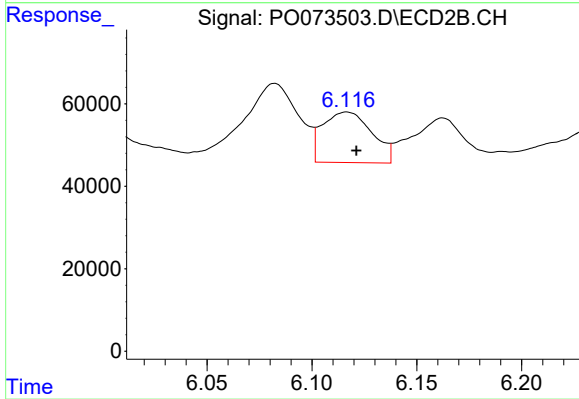
Instrument :
 ECD_O
 ClientSampled :



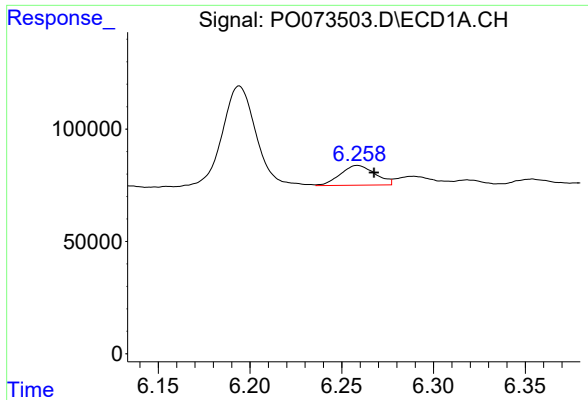
#19 AR-1242-4
 R.T.: 5.573 min
 Delta R.T.: 0.012 min
 Response: 106378
 Conc: 96.79 ng/ml



#20 AR-1242-5
 R.T.: 7.248 min
 Delta R.T.: -0.002 min
 Response: 66639
 Conc: 31.68 ng/ml

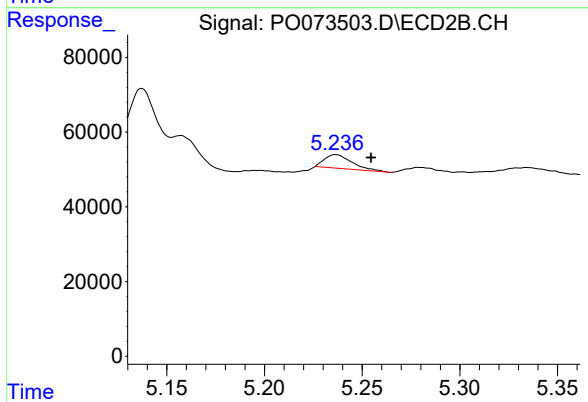


#20 AR-1242-5
 R.T.: 6.117 min
 Delta R.T.: -0.005 min
 Response: 200817
 Conc: 129.70 ng/ml

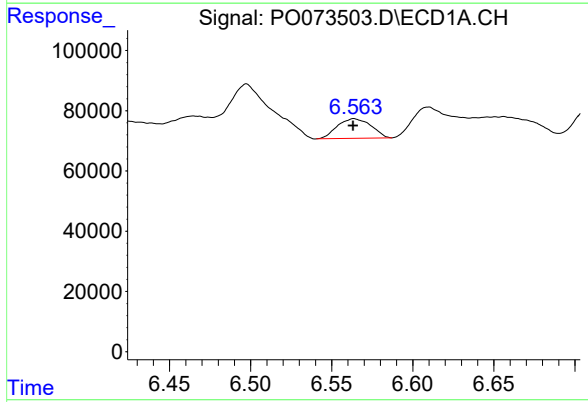


#21 AR-1248-1
 R.T.: 6.259 min
 Delta R.T.: -0.009 min
 Response: 116015
 Conc: 58.03 ng/ml

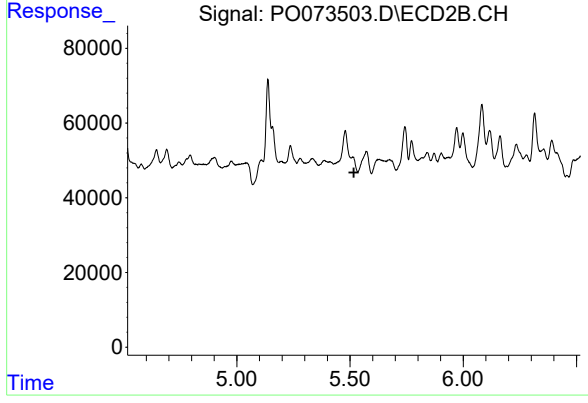
Instrument :
 ECD_O
 ClientSampleId :



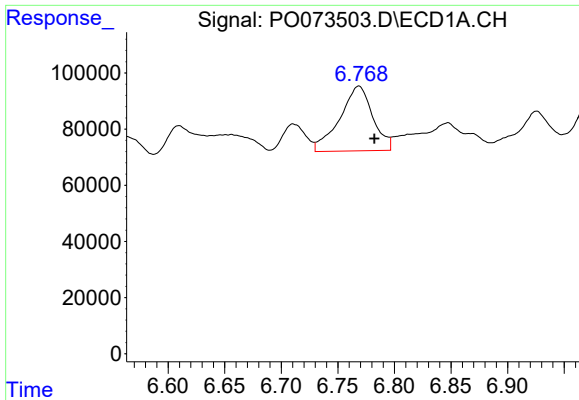
#21 AR-1248-1
 R.T.: 5.237 min
 Delta R.T.: -0.018 min
 Response: 36012
 Conc: 28.72 ng/ml



#22 AR-1248-2
 R.T.: 6.564 min
 Delta R.T.: 0.000 min
 Response: 93978
 Conc: 36.35 ng/ml



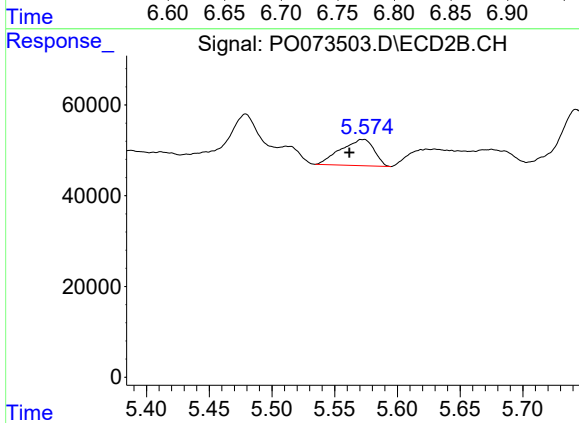
#22 AR-1248-2
 R.T.: 0.000 min
 Exp R.T. : 5.517 min
 Response: 0
 Conc: N.D.



#23 AR-1248-3

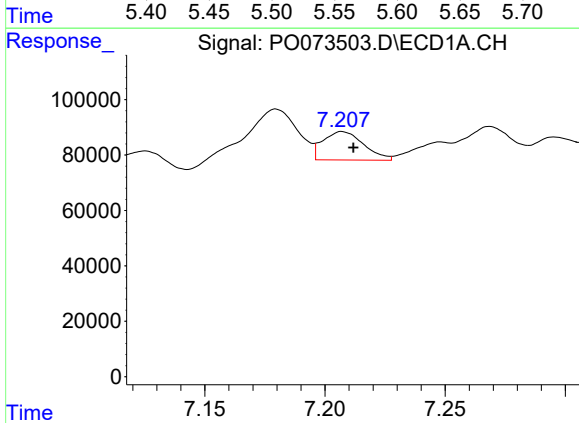
R.T.: 6.769 min
 Delta R.T.: -0.014 min
 Response: 469498
 Conc: 153.20 ng/ml

Instrument :
 ECD_O
 ClientSampleId :



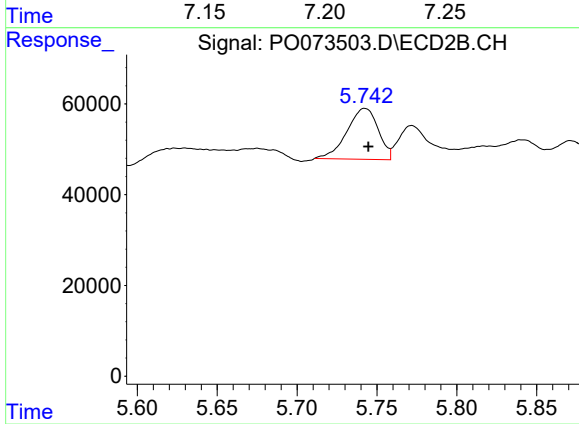
#23 AR-1248-3

R.T.: 5.573 min
 Delta R.T.: 0.011 min
 Response: 106378
 Conc: 62.34 ng/ml



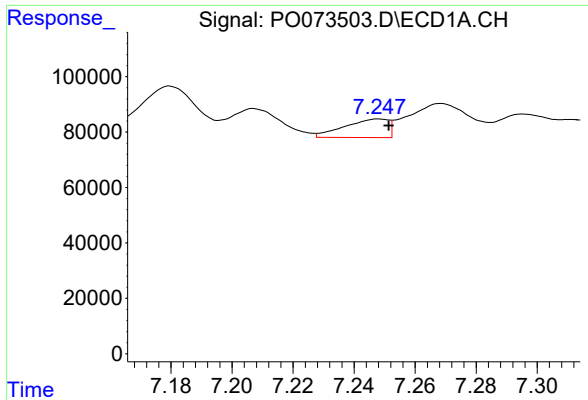
#24 AR-1248-4

R.T.: 7.207 min
 Delta R.T.: -0.005 min
 Response: 120912
 Conc: 32.41 ng/ml



#24 AR-1248-4

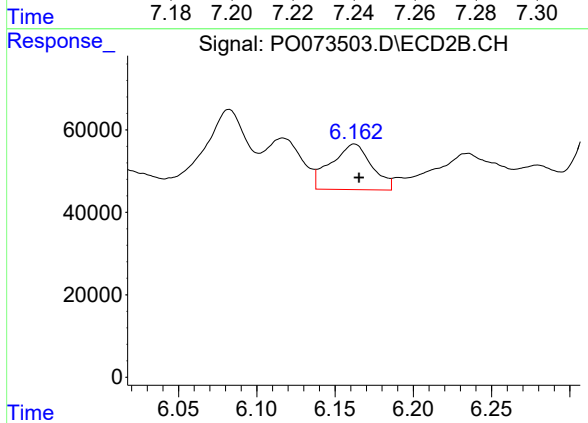
R.T.: 5.742 min
 Delta R.T.: -0.002 min
 Response: 153060
 Conc: 74.46 ng/ml



#25 AR-1248-5

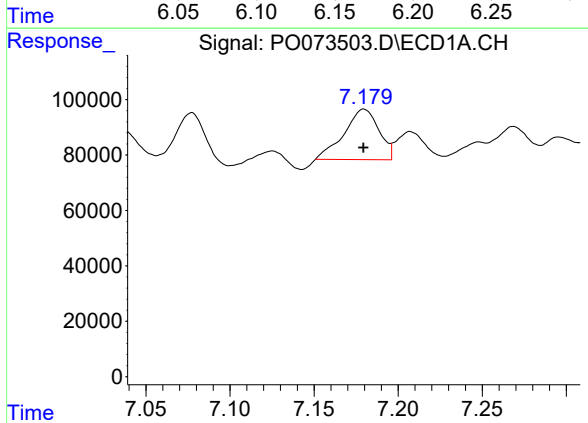
R.T.: 7.248 min
 Delta R.T.: -0.003 min
 Response: 66639
 Conc: 18.62 ng/ml

Instrument :
 ECD_O
 ClientSampleId :



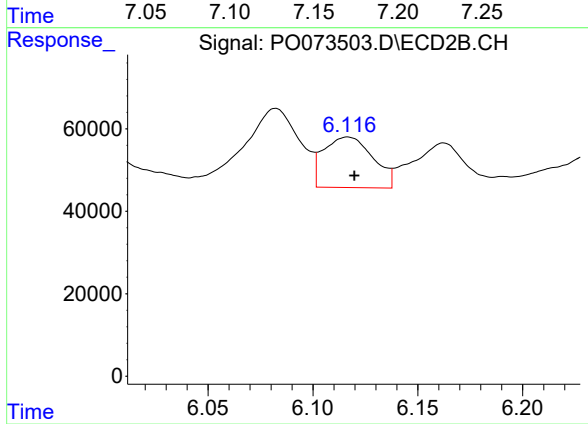
#25 AR-1248-5

R.T.: 6.162 min
 Delta R.T.: -0.003 min
 Response: 199055
 Conc: 89.64 ng/ml



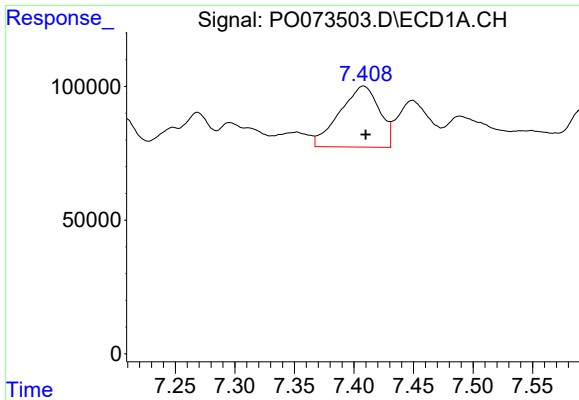
#26 AR-1254-1

R.T.: 7.180 min
 Delta R.T.: 0.000 min
 Response: 263097
 Conc: 76.08 ng/ml



#26 AR-1254-1

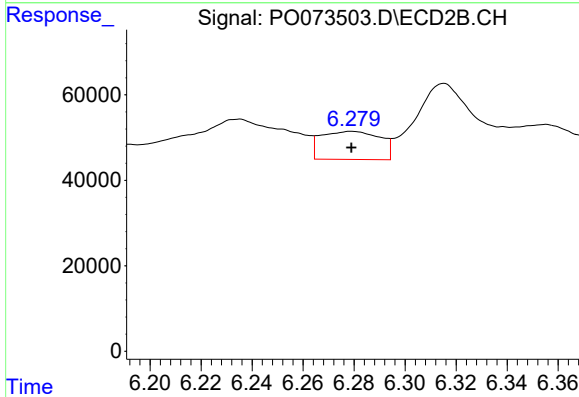
R.T.: 6.117 min
 Delta R.T.: -0.003 min
 Response: 200817
 Conc: 64.49 ng/ml



#27 AR-1254-2

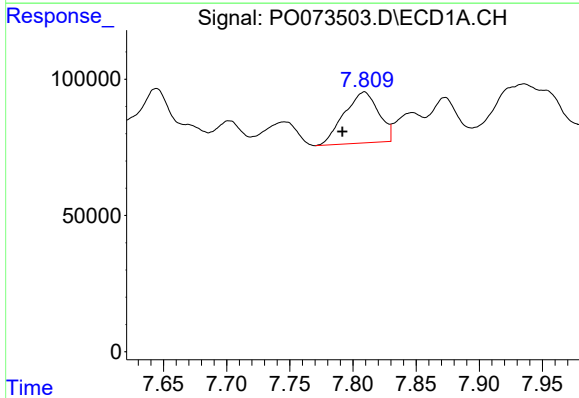
R.T.: 7.408 min
 Delta R.T.: -0.002 min
 Response: 531542
 Conc: 97.57 ng/ml

Instrument :
 ECD_O
 ClientSampleId :



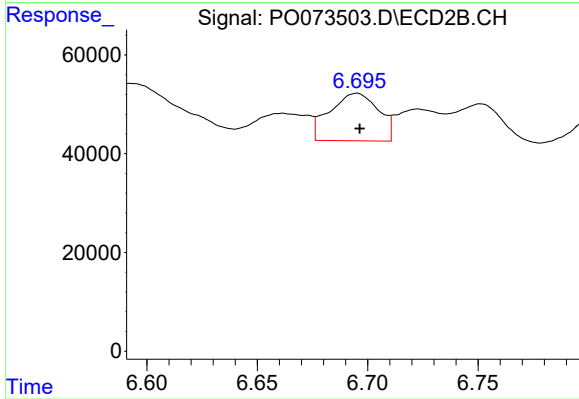
#27 AR-1254-2

R.T.: 6.279 min
 Delta R.T.: 0.000 min
 Response: 105632
 Conc: 38.69 ng/ml



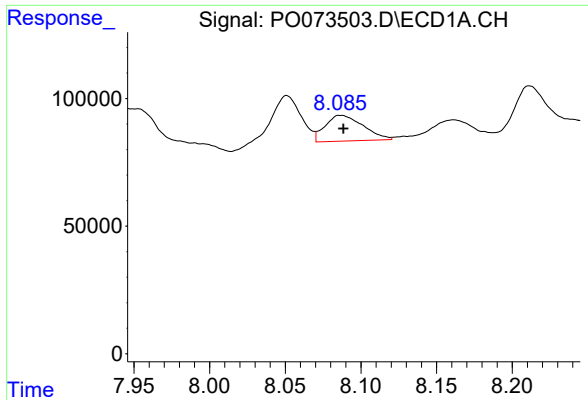
#28 AR-1254-3

R.T.: 7.809 min
 Delta R.T.: 0.017 min
 Response: 355119
 Conc: 62.66 ng/ml



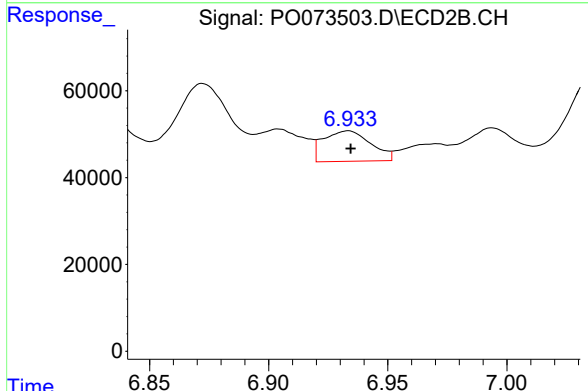
#28 AR-1254-3

R.T.: 6.695 min
 Delta R.T.: -0.001 min
 Response: 147951
 Conc: 34.98 ng/ml

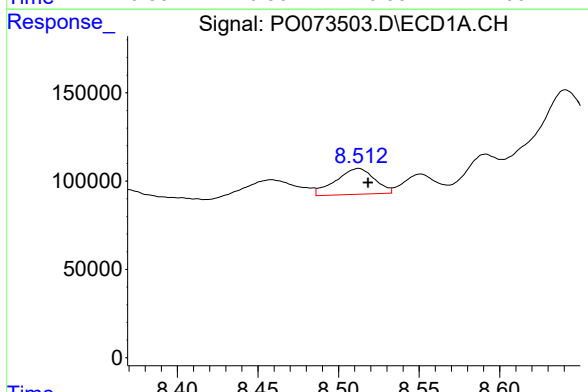


#29 AR-1254-4
 R.T.: 8.087 min
 Delta R.T.: -0.002 min
 Response: 175878
 Conc: 36.35 ng/ml

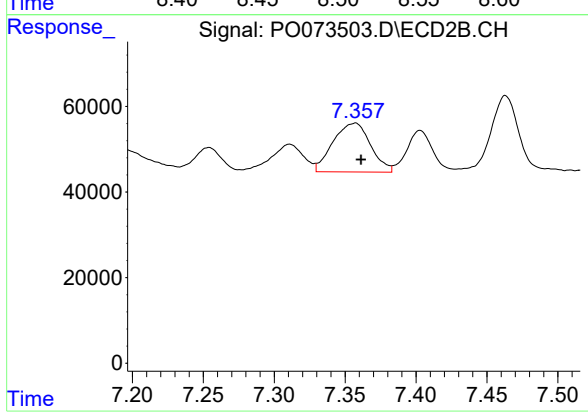
Instrument :
 ECD_O
 ClientSampleId :



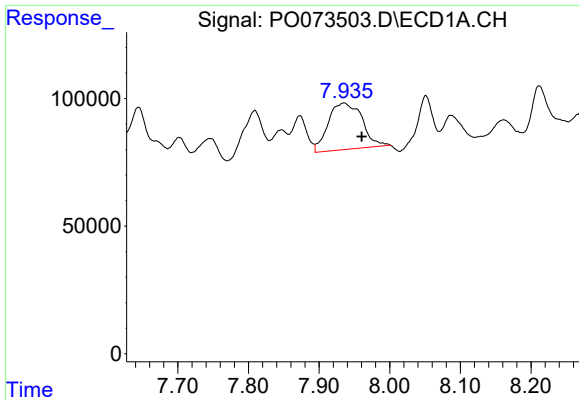
#29 AR-1254-4
 R.T.: 6.933 min
 Delta R.T.: -0.001 min
 Response: 97155
 Conc: 33.65 ng/ml



#30 AR-1254-5
 R.T.: 8.512 min
 Delta R.T.: -0.006 min
 Response: 247090
 Conc: 51.91 ng/ml



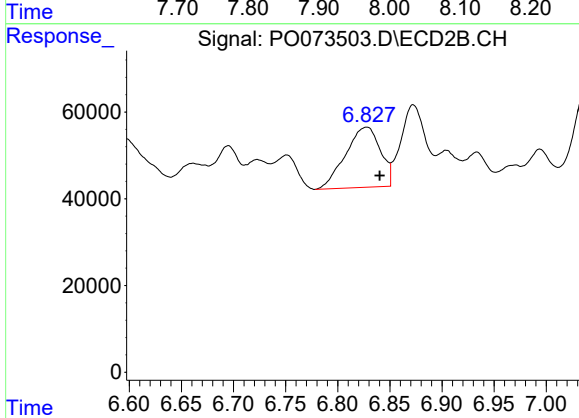
#30 AR-1254-5
 R.T.: 7.357 min
 Delta R.T.: -0.004 min
 Response: 209893
 Conc: 56.83 ng/ml



#31 AR-1260-1

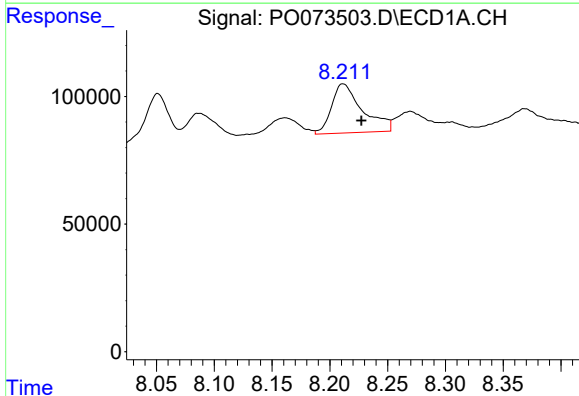
R.T.: 7.935 min
 Delta R.T.: -0.025 min
 Response: 607763
 Conc: 150.61 ng/ml

Instrument :
 ECD_O
 ClientSampleId :



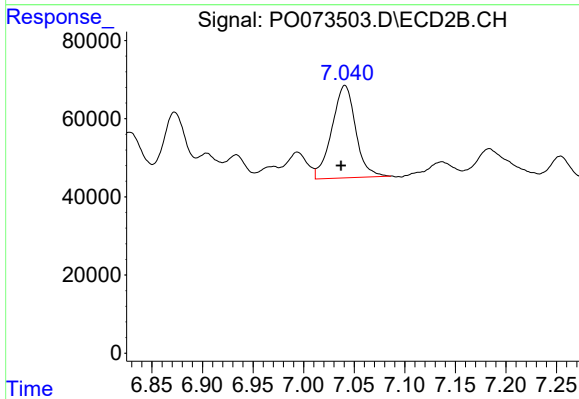
#31 AR-1260-1

R.T.: 6.828 min
 Delta R.T.: -0.012 min
 Response: 322544
 Conc: 120.05 ng/ml



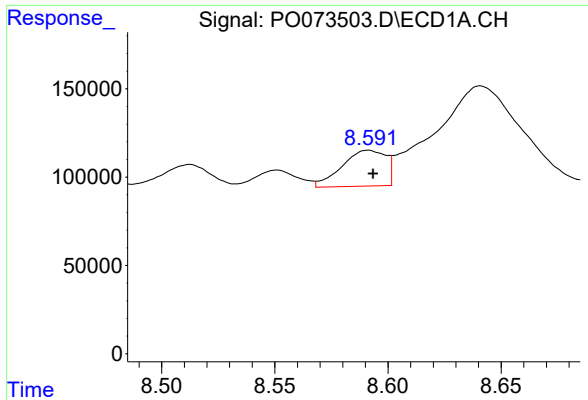
#32 AR-1260-2

R.T.: 8.212 min
 Delta R.T.: -0.016 min
 Response: 357478
 Conc: 65.05 ng/ml



#32 AR-1260-2

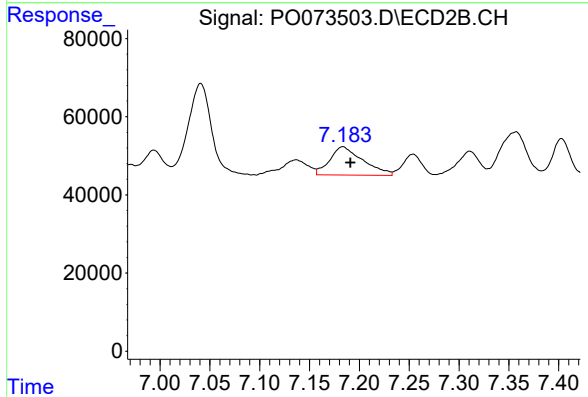
R.T.: 7.041 min
 Delta R.T.: 0.004 min
 Response: 386489
 Conc: 115.87 ng/ml



#33 AR-1260-3

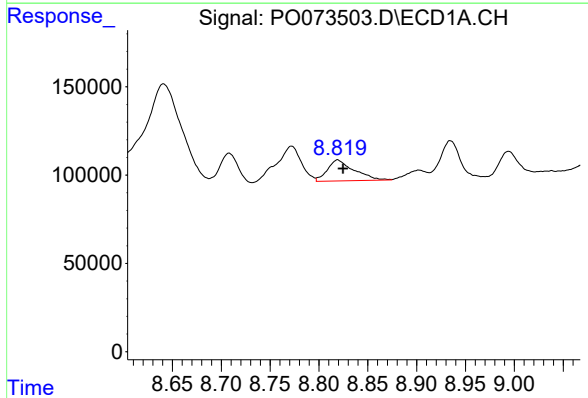
R.T.: 8.591 min
 Delta R.T.: -0.002 min
 Response: 273986
 Conc: 61.74 ng/ml

Instrument :
 ECD_O
 ClientSampled :



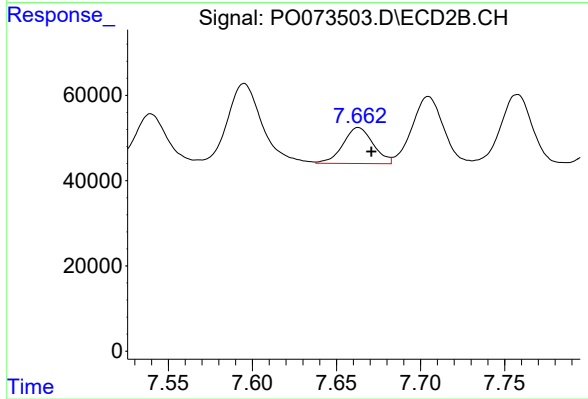
#33 AR-1260-3

R.T.: 7.183 min
 Delta R.T.: -0.008 min
 Response: 167155
 Conc: 54.11 ng/ml



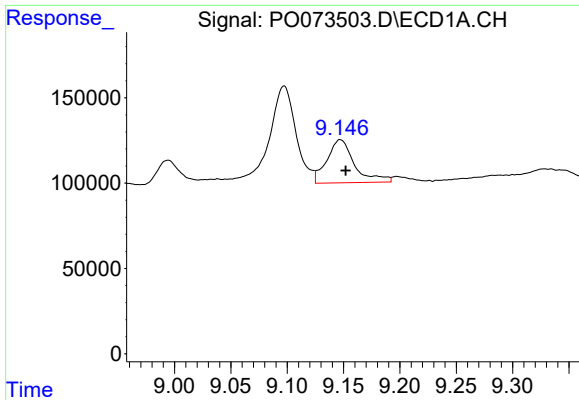
#34 AR-1260-4

R.T.: 8.819 min
 Delta R.T.: -0.005 min
 Response: 225288
 Conc: 52.20 ng/ml



#34 AR-1260-4

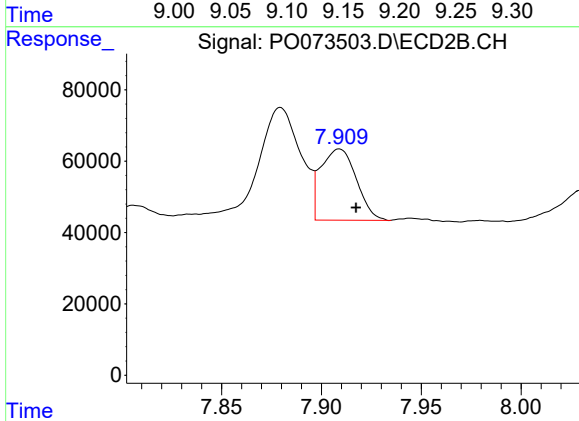
R.T.: 7.663 min
 Delta R.T.: -0.008 min
 Response: 105825
 Conc: 43.00 ng/ml



#35 AR-1260-5

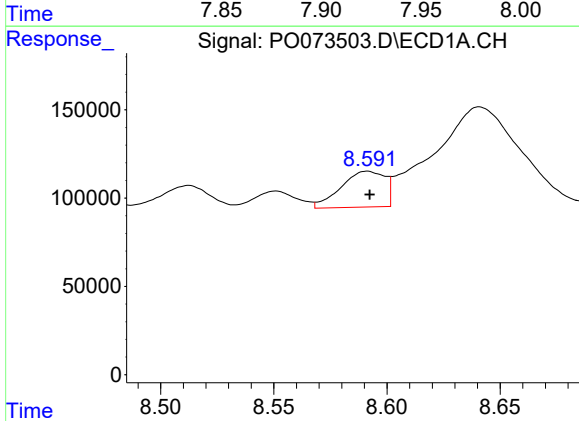
R.T.: 9.147 min
 Delta R.T.: -0.005 min
 Response: 430928
 Conc: 43.64 ng/ml

Instrument :
 ECD_O
 ClientSampleId :



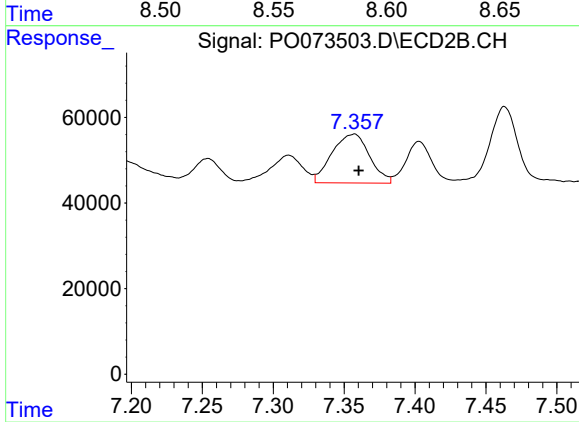
#35 AR-1260-5

R.T.: 7.909 min
 Delta R.T.: -0.008 min
 Response: 248222
 Conc: 40.07 ng/ml



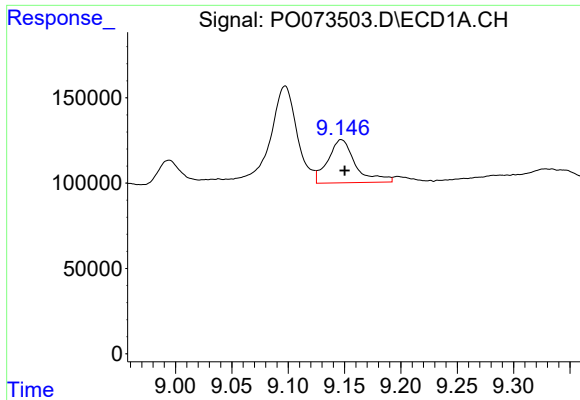
#36 AR-1262-1

R.T.: 8.591 min
 Delta R.T.: -0.001 min
 Response: 273986
 Conc: 43.88 ng/ml



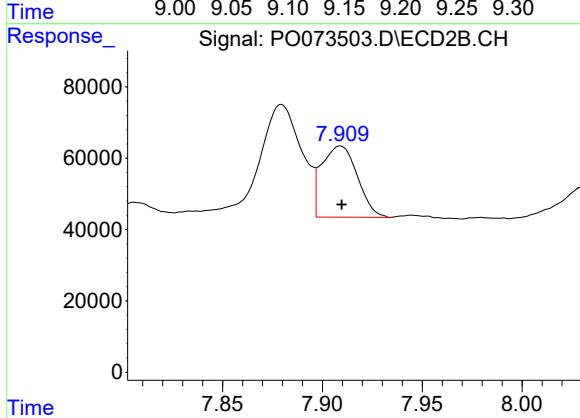
#36 AR-1262-1

R.T.: 7.357 min
 Delta R.T.: -0.003 min
 Response: 209893
 Conc: 108.31 ng/ml

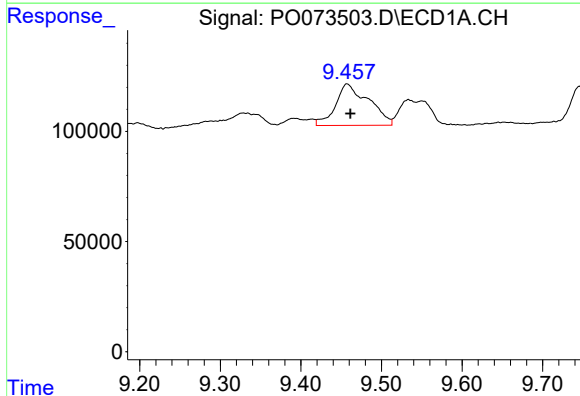


#37 AR-1262-2
 R.T.: 9.147 min
 Delta R.T.: -0.003 min
 Response: 430928
 Conc: 39.84 ng/ml

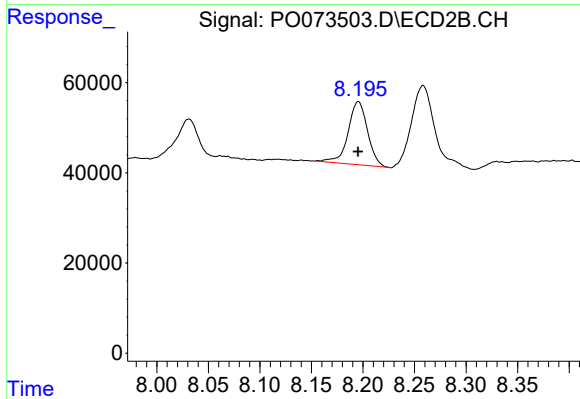
Instrument :
 ECD_O
 ClientSampled :



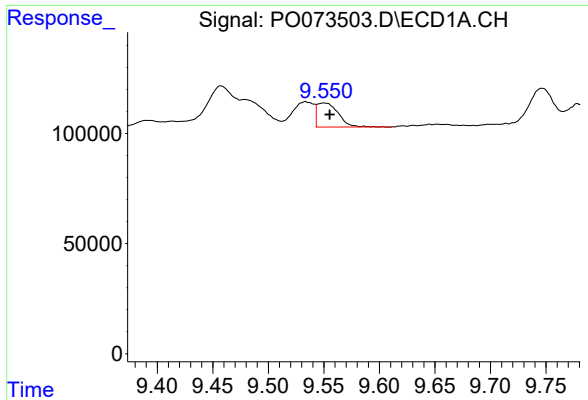
#37 AR-1262-2
 R.T.: 7.909 min
 Delta R.T.: 0.000 min
 Response: 248222
 Conc: 37.86 ng/ml



#38 AR-1262-3
 R.T.: 9.457 min
 Delta R.T.: -0.004 min
 Response: 539536
 Conc: 73.51 ng/ml

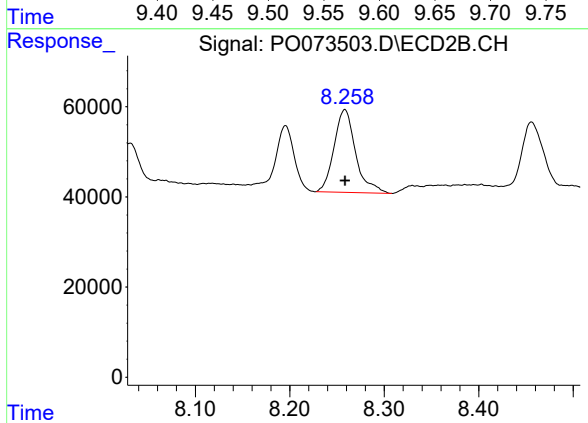


#38 AR-1262-3
 R.T.: 8.196 min
 Delta R.T.: 0.000 min
 Response: 183927
 Conc: 68.17 ng/ml

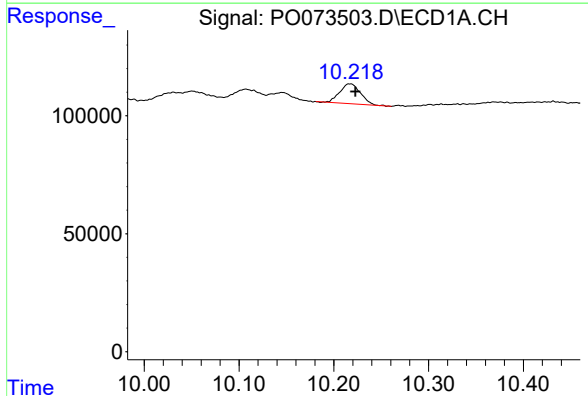


#39 AR-1262-4
 R.T.: 9.550 min
 Delta R.T.: -0.005 min
 Response: 144650
 Conc: 26.29 ng/ml

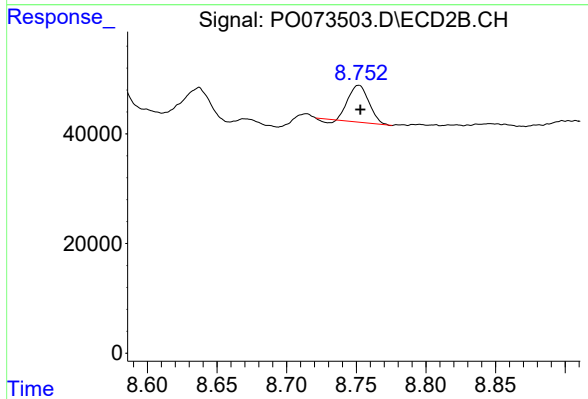
Instrument :
 ECD_O
 ClientSampled :



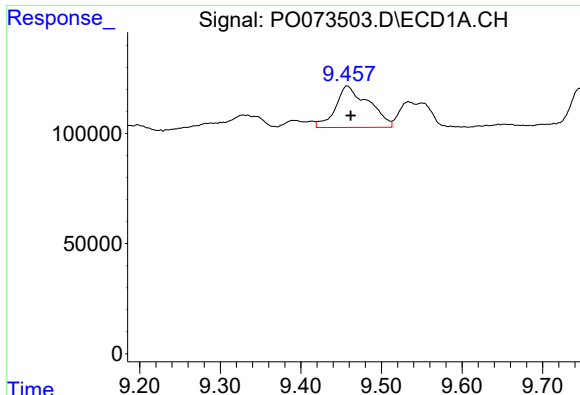
#39 AR-1262-4
 R.T.: 8.258 min
 Delta R.T.: 0.000 min
 Response: 291703
 Conc: 61.09 ng/ml



#40 AR-1262-5
 R.T.: 10.217 min
 Delta R.T.: -0.006 min
 Response: 128209
 Conc: 32.94 ng/ml



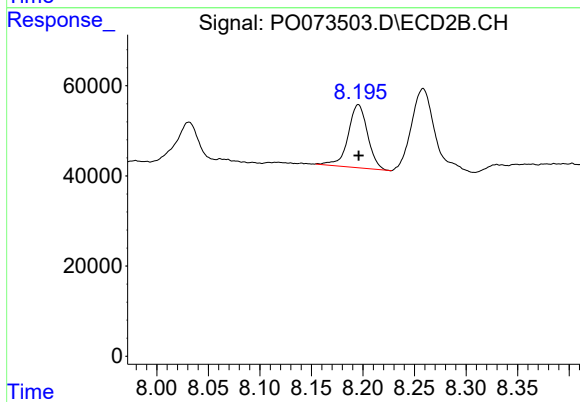
#40 AR-1262-5
 R.T.: 8.752 min
 Delta R.T.: -0.001 min
 Response: 66928
 Conc: 29.26 ng/ml



#41 AR-1268-1

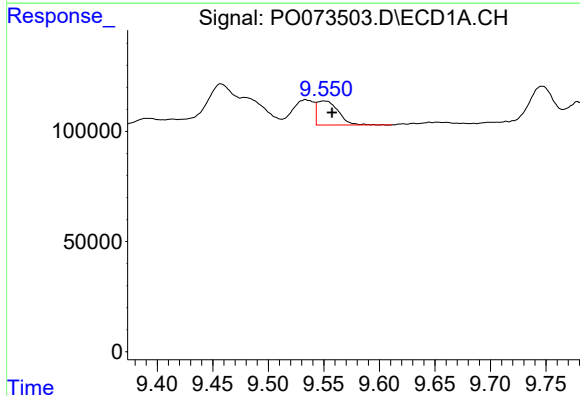
R.T.: 9.457 min
 Delta R.T.: -0.004 min
 Response: 539536
 Conc: 38.63 ng/ml

Instrument :
 ECD_O
 ClientSampled :



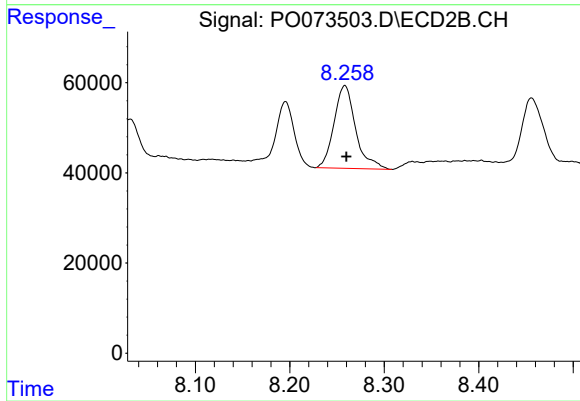
#41 AR-1268-1

R.T.: 8.196 min
 Delta R.T.: 0.000 min
 Response: 183927
 Conc: 22.58 ng/ml



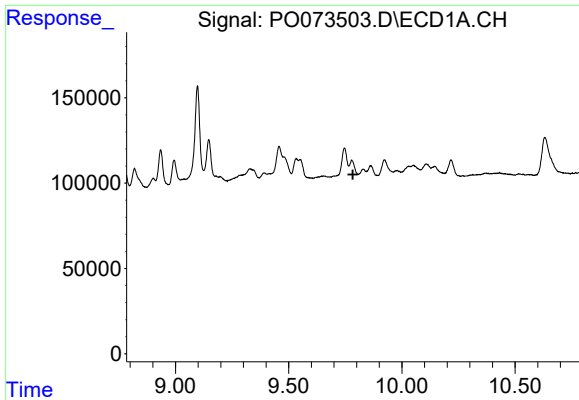
#42 AR-1268-2

R.T.: 9.550 min
 Delta R.T.: -0.007 min
 Response: 144650
 Conc: 11.91 ng/ml



#42 AR-1268-2

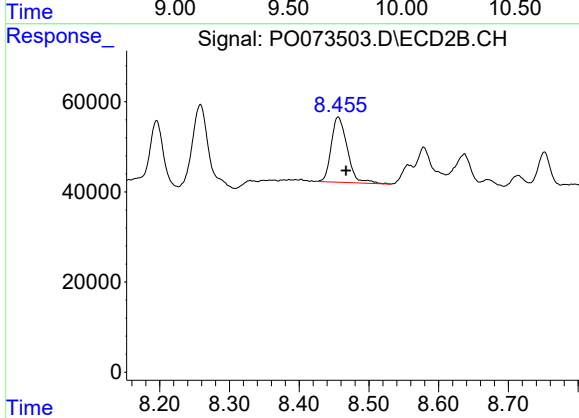
R.T.: 8.258 min
 Delta R.T.: -0.002 min
 Response: 291703
 Conc: 39.94 ng/ml



#43 AR-1268-3

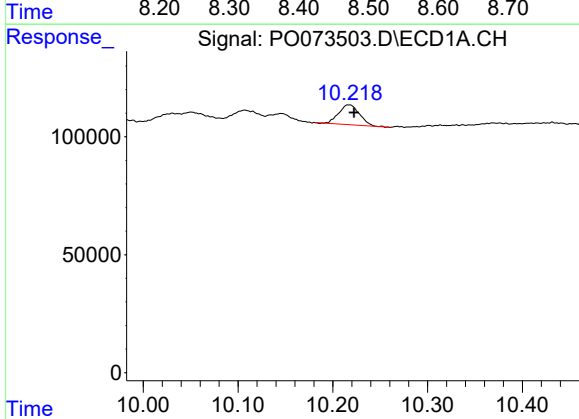
R.T.: 9.778 min
 Delta R.T.: -0.006 min
 Response: -7167
 Conc: N.D.

Instrument :
 ECD_O
 ClientSampled :



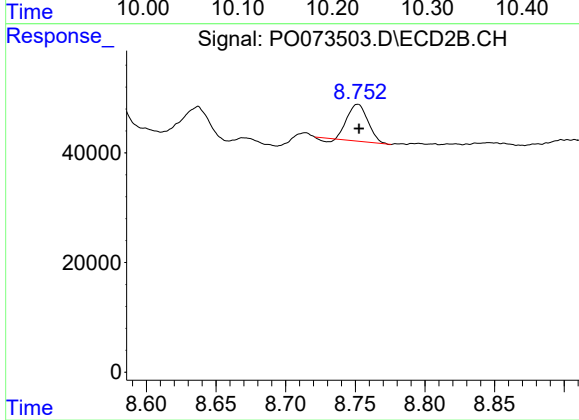
#43 AR-1268-3

R.T.: 8.456 min
 Delta R.T.: -0.011 min
 Response: 230797
 Conc: 36.90 ng/ml



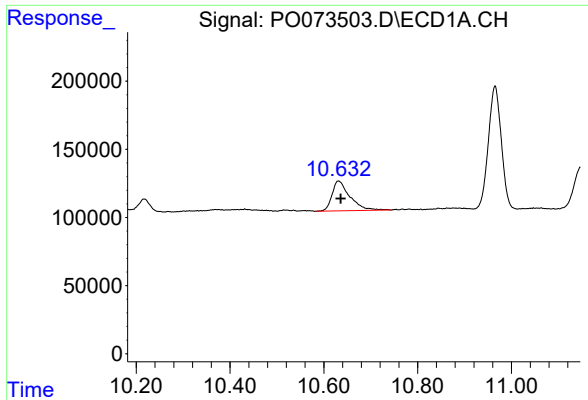
#44 AR-1268-4

R.T.: 10.217 min
 Delta R.T.: -0.005 min
 Response: 128209
 Conc: 28.42 ng/ml



#44 AR-1268-4

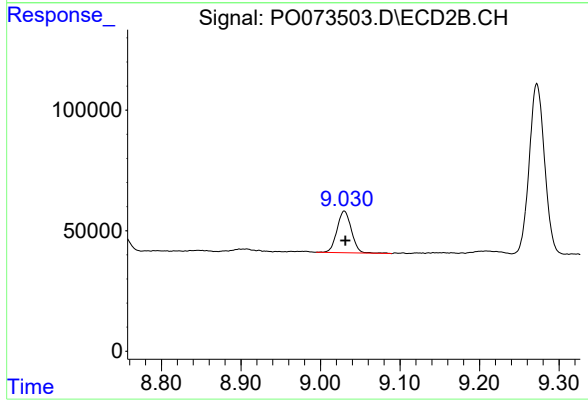
R.T.: 8.752 min
 Delta R.T.: 0.000 min
 Response: 66928
 Conc: 24.99 ng/ml



#45 AR-1268-5

R.T.: 10.631 min
Delta R.T.: -0.005 min
Response: 578379
Conc: 18.17 ng/ml

Instrument :
ECD_O
ClientSampleId :



#45 AR-1268-5

R.T.: 9.030 min
Delta R.T.: -0.001 min
Response: 218123
Conc: 11.96 ng/ml