

Data Path : Z:\pestpcbsrv\HPCHEM1\ECD_0\Data\PO112420\
 Data File : PO073505.D
 Signal(s) : Signal #1: ECD1A.CH Signal #2: ECD2B.CH
 Acq On : 24 Nov 2020 12:04
 Operator : DD\AJ
 Sample : L4836-06
 Misc :
 ALS Vial : 12 Sample Multiplier: 1

Instrument :
 ECD_0
 ClientSampled :
 SB-06

Integration File signal 1: autoint1.e
 Integration File signal 2: autoint2.e
 Quant Time: Nov 25 10:29:05 2020
 Quant Method : Z:\pestpcbsrv\HPCHEM1\ECD_0\methods\PO112320.M
 Quant Title : GC EXTRACTABLES
 QLast Update : Wed Nov 25 10:04:26 2020
 Response via : Initial Calibration
 Integrator: ChemStation 6890 Scale Mode: Small noise peaks clipped

Volume Inj. : 2 µl
 Signal #1 Phase : ZB-MR1 Signal #2 Phase: ZB-MR2
 Signal #1 Info : 30Mx0.32mmx 0.50µ Signal #2 Info : 30M x 0.32mm x 0.25µm

Compound	RT#1	RT#2	Resp#1	Resp#2	ng/ml	ng/ml
System Monitoring Compounds						
1) SA Tetrachlo...	4.942	4.007	1406990	1430872	16.820	29.185 #
2) SA Decachlor...	10.965	9.273	1373773	749036	16.662	16.336
Target Compounds						
3) L1 AR-1016-1	6.264	5.289f	47251	28120	14.349	13.803
4) L1 AR-1016-2	6.290	5.289	61064	28120	13.265	10.055
5) L1 AR-1016-3	6.355	5.481	33220	65275	12.132	43.896 #
6) L1 AR-1016-4	6.466	0.000	63432	0	27.791	N.D. #
7) L1 AR-1016-5	6.769	5.738	334116	225477	148.605	149.788
8) L2 AR-1221-1	0.000	4.261	0	38408	N.D.	68.145 #
9) L2 AR-1221-2	5.296	4.355	200114	100145	284.526	247.739
10) L2 AR-1221-3	5.390	0.000	187816	0	83.768	N.D. #
11) L3 AR-1232-1	5.390	0.000	187816	0	101.771	N.D. #
12) L3 AR-1232-2	5.976	5.289	320489	28120	336.780	23.528 #
13) L3 AR-1232-3	6.290	5.481	61064	65275	31.217	104.054 #
14) L3 AR-1232-4	6.466	5.571	63432	102117	64.156	189.411 #
15) L3 AR-1232-5	6.567	5.738	117143	225477	173.995	381.662 #
16) L4 AR-1242-1	6.264	0.000	47251	0	17.915	N.D. #
17) L4 AR-1242-2	6.290	5.289	61064	28120	16.705	12.433 #
18) L4 AR-1242-3	6.355	5.481f	33220	65275	15.064	54.368 #
19) L4 AR-1242-4	6.466	5.571	63432	102117	34.174	92.910 #
20) L4 AR-1242-5	7.237	0.000	53619	0	25.492	N.D. #
21) L5 AR-1248-1	6.264	0.000	47251	0	23.636	N.D. #
22) L5 AR-1248-2	6.567	0.000	117143	0	45.313	N.D. #
23) L5 AR-1248-3	6.769	5.571	334116	102117	109.026	59.841 #
24) L5 AR-1248-4	7.218	5.738	112384	225477	30.127	109.684 #
25) L5 AR-1248-5	7.237	6.169	53619	103247	14.986	46.497 #
26) L6 AR-1254-1	7.171	0.000	143324	0	41.443	N.D. #
27) L6 AR-1254-2	7.404	6.255f	361902	203288	66.429	74.464
28) L6 AR-1254-3	7.809f	6.691	248476	73184	43.844	17.304 #
29) L6 AR-1254-4	8.099	6.914f	75462	104978	15.597	36.362 #
30) L6 AR-1254-5	8.516	0.000	43448	0	9.127	N.D. #
31) L7 AR-1260-1	7.947	6.816f	219898	137148	54.494	51.046
32) L7 AR-1260-2	8.241	7.033	290742	87125	52.902	26.121 #
33) L7 AR-1260-3	0.000	7.201	0	180595	N.D.	58.461 #
34) L7 AR-1260-4	8.796f	0.000	42810	0	9.918	N.D. #
35) L7 AR-1260-5	9.149	0.000	90385	0	9.153	N.D. #
37) L8 AR-1262-2	9.149	0.000	90385	0	8.356	N.D. #
38) L8 AR-1262-3	9.457	0.000	166097	0	22.629	N.D. #
39) L8 AR-1262-4	9.533f	8.255	32763	32426	5.954	6.791
41) L9 AR-1268-1	9.457	0.000	166097	0	11.891	N.D. #
42) L9 AR-1268-2	9.533f	8.255	32763	32426	2.697	4.440 #
45) L9 AR-1268-5	10.657f	0.000	153144	0	4.812	N.D. #

Data Path : Z:\pestpcbsrv\HPCHEM1\ECD_0\Data\PO112420\
Data File : PO073505.D
Signal(s) : Signal #1: ECD1A.CH Signal #2: ECD2B.CH
Acq On : 24 Nov 2020 12:04
Operator : DD\AJ
Sample : L4836-06
Misc :
ALS Vial : 12 Sample Multiplier: 1

Instrument :
ECD_0
ClientSampleId :
SB-06

Integration File signal 1: autoint1.e
Integration File signal 2: autoint2.e
Quant Time: Nov 25 10:29:05 2020
Quant Method : Z:\pestpcbsrv\HPCHEM1\ECD_0\methods\PO112320.M
Quant Title : GC EXTRACTABLES
QLast Update : Wed Nov 25 10:04:26 2020
Response via : Initial Calibration
Integrator: ChemStation 6890 Scale Mode: Small noise peaks clipped

Volume Inj. : 2 µl
Signal #1 Phase : ZB-MR1 Signal #2 Phase: ZB-MR2
Signal #1 Info : 30Mx0.32mmx 0.50µ Signal #2 Info : 30M x 0.32mm x 0.25µm

Compound	RT#1	RT#2	Resp#1	Resp#2	ng/ml	ng/ml
----------	------	------	--------	--------	-------	-------

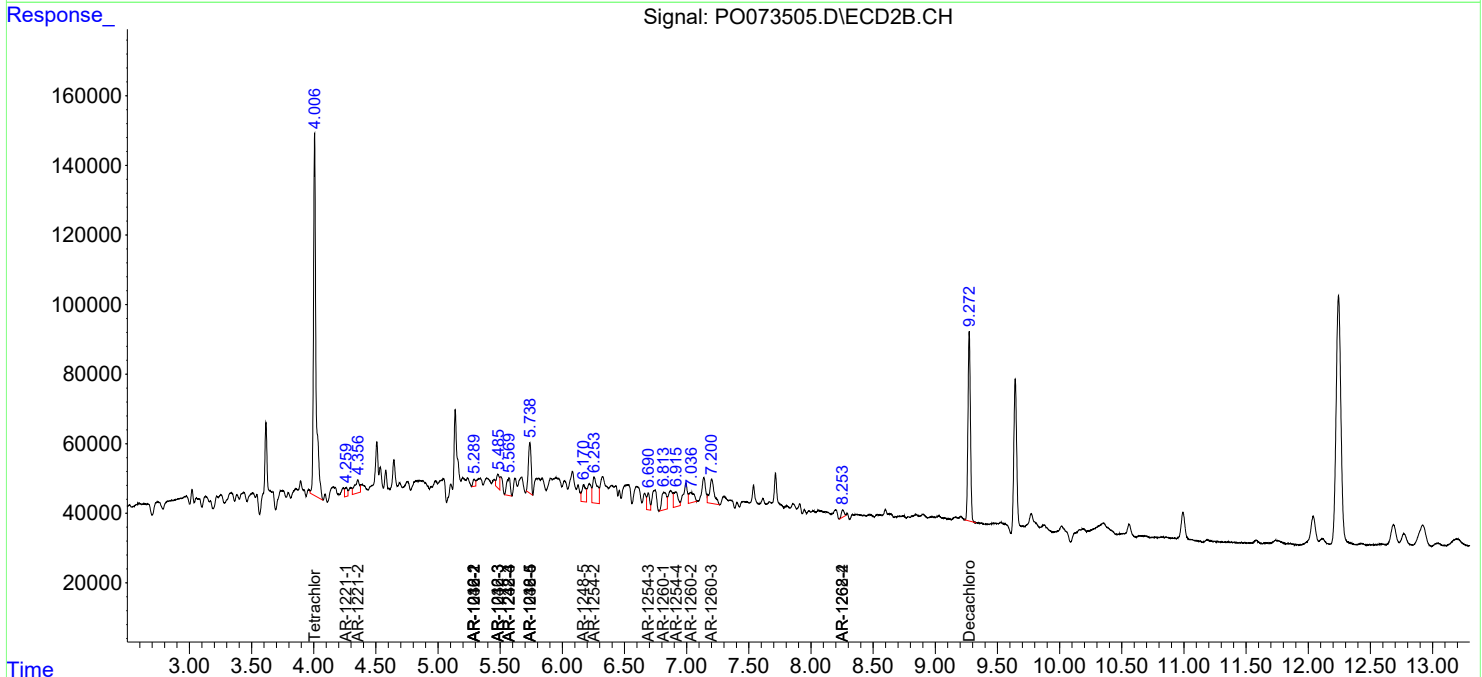
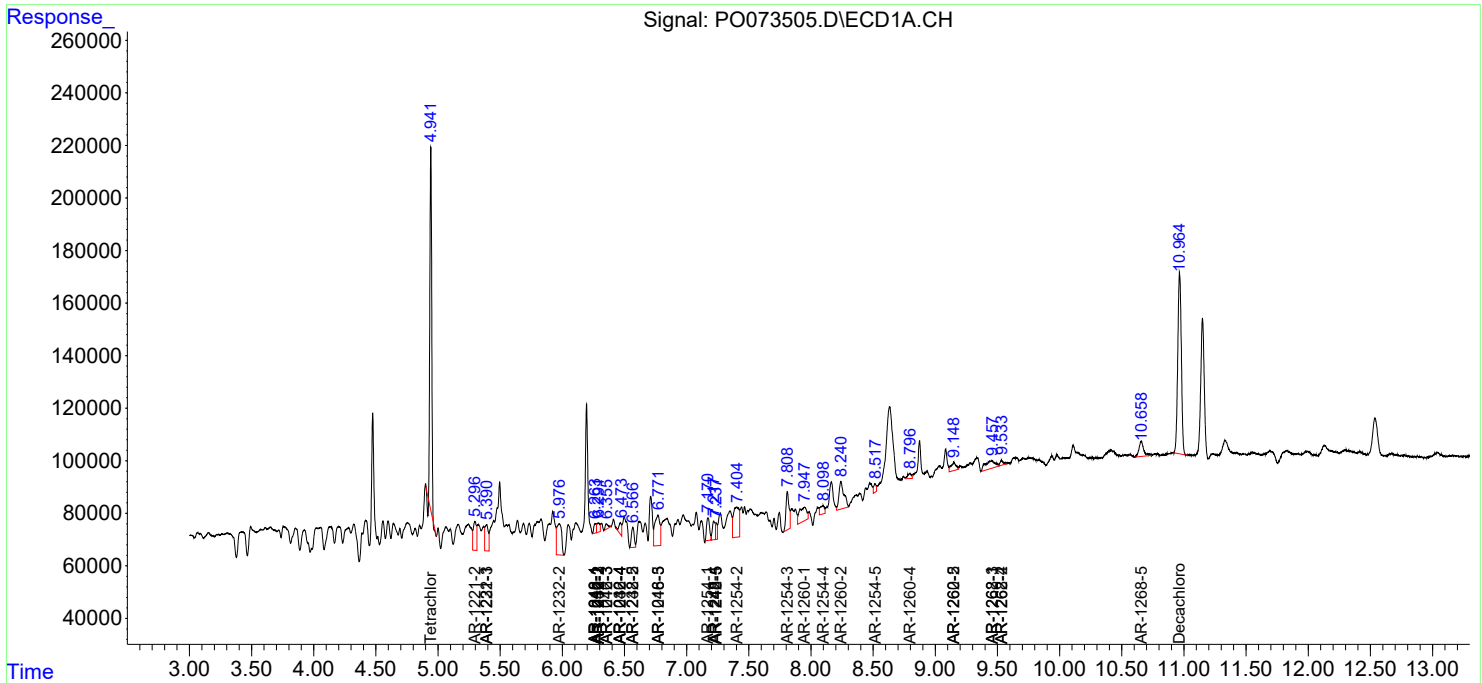
(f)=RT Delta > 1/2 Window (#)=Amounts differ by > 25% (m)=manual int.

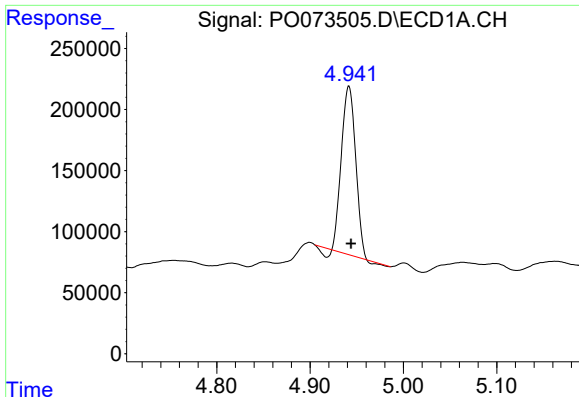
Data Path : Z:\pestpcbsrv\HPCHEM1\ECD_0\Data\PO112420\
 Data File : PO073505.D
 Signal(s) : Signal #1: ECD1A.CH Signal #2: ECD2B.CH
 Acq On : 24 Nov 2020 12:04
 Operator : DD\AJ
 Sample : L4836-06
 Misc :
 ALS Vial : 12 Sample Multiplier: 1

Instrument :
 ECD_O
 ClientSampled :
 SB-06

Integration File signal 1: autoint1.e
 Integration File signal 2: autoint2.e
 Quant Time: Nov 25 10:29:05 2020
 Quant Method : Z:\pestpcbsrv\HPCHEM1\ECD_0\methods\PO112320.M
 Quant Title : GC EXTRACTABLES
 QLast Update : Wed Nov 25 10:04:26 2020
 Response via : Initial Calibration
 Integrator: ChemStation 6890 Scale Mode: Small noise peaks clipped

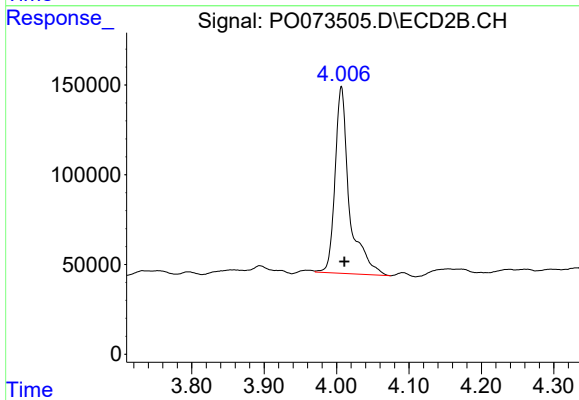
Volume Inj. : 2 µl
 Signal #1 Phase : ZB-MR1 Signal #2 Phase: ZB-MR2
 Signal #1 Info : 30Mx0.32mmx 0.50µ Signal #2 Info : 30M x 0.32mm x 0.25µm



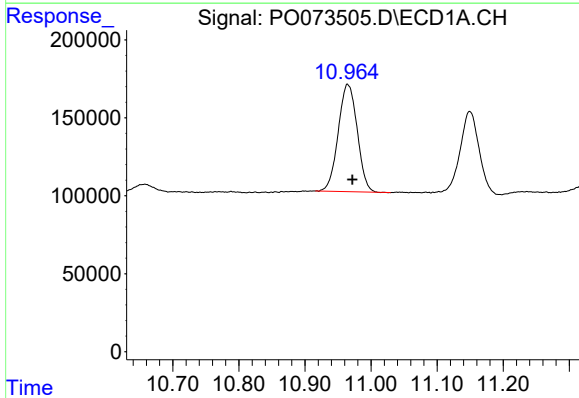


#1 Tetrachloro-m-xylene
 R.T.: 4.942 min
 Delta R.T.: -0.002 min
 Response: 1406990
 Conc: 16.82 ng/ml

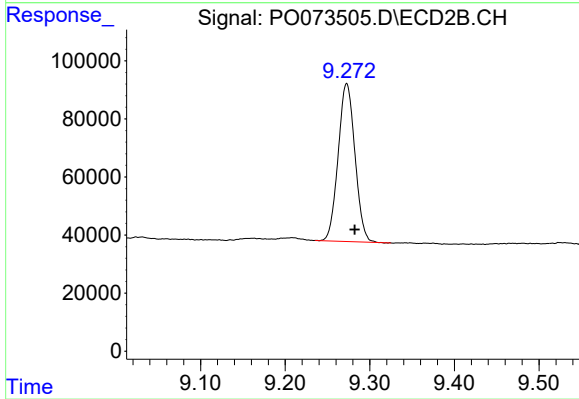
Instrument :
 ECD_O
 ClientSampled :
 SB-06



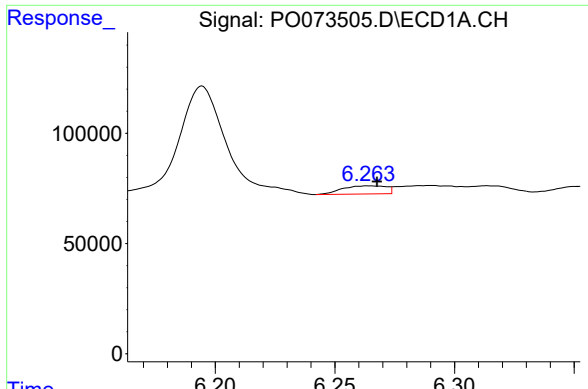
#1 Tetrachloro-m-xylene
 R.T.: 4.007 min
 Delta R.T.: -0.004 min
 Response: 1430872
 Conc: 29.18 ng/ml



#2 Decachlorobiphenyl
 R.T.: 10.965 min
 Delta R.T.: -0.007 min
 Response: 1373773
 Conc: 16.66 ng/ml

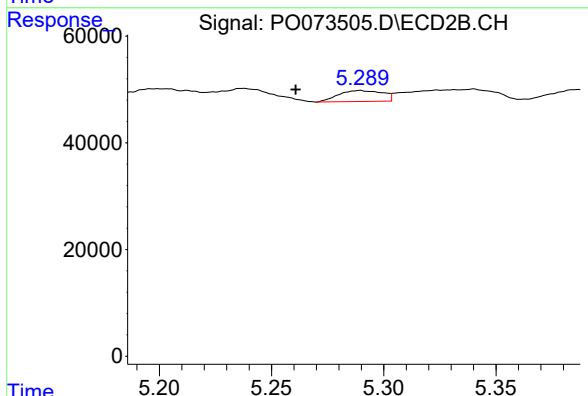


#2 Decachlorobiphenyl
 R.T.: 9.273 min
 Delta R.T.: -0.009 min
 Response: 749036
 Conc: 16.34 ng/ml

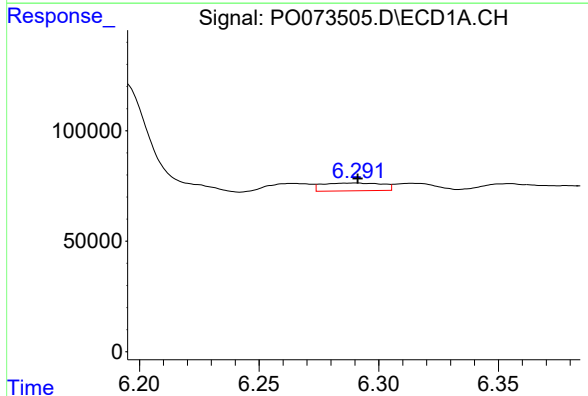


#3 AR-1016-1
 R.T.: 6.264 min
 Delta R.T.: -0.003 min
 Response: 47251
 Conc: 14.35 ng/ml

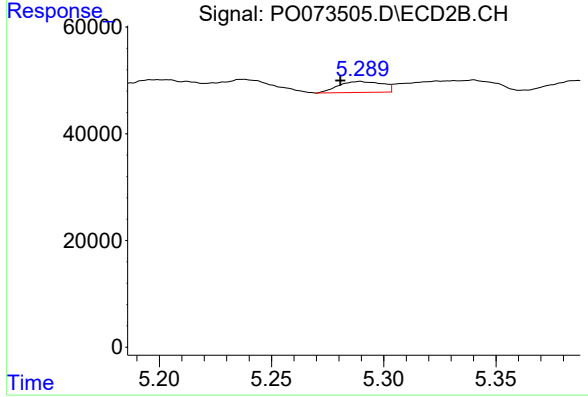
Instrument :
 ECD_O
 ClientSampled :
 SB-06



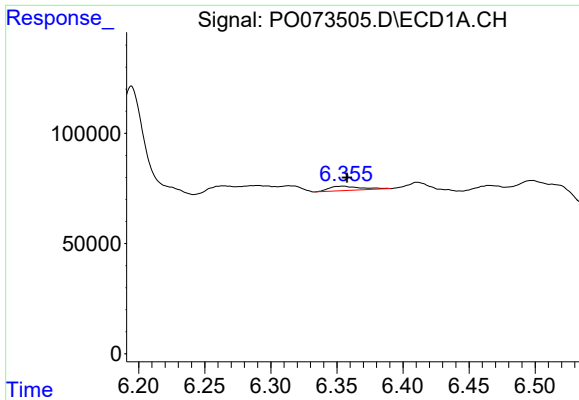
#3 AR-1016-1
 R.T.: 5.289 min
 Delta R.T.: 0.029 min
 Response: 28120
 Conc: 13.80 ng/ml



#4 AR-1016-2
 R.T.: 6.290 min
 Delta R.T.: 0.000 min
 Response: 61064
 Conc: 13.26 ng/ml

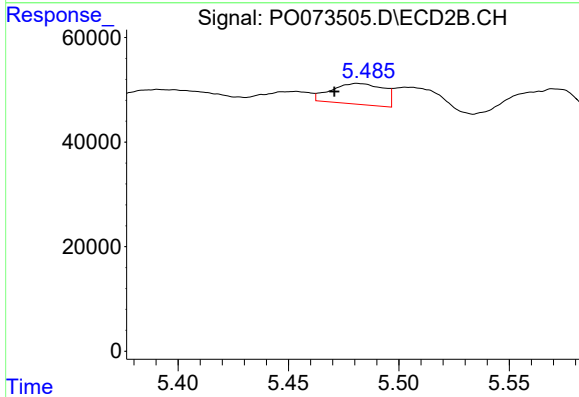


#4 AR-1016-2
 R.T.: 5.289 min
 Delta R.T.: 0.009 min
 Response: 28120
 Conc: 10.05 ng/ml

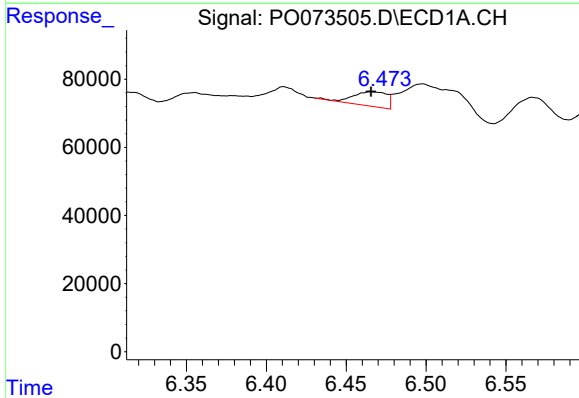


#5 AR-1016-3
 R.T.: 6.355 min
 Delta R.T.: -0.003 min
 Response: 33220
 Conc: 12.13 ng/ml

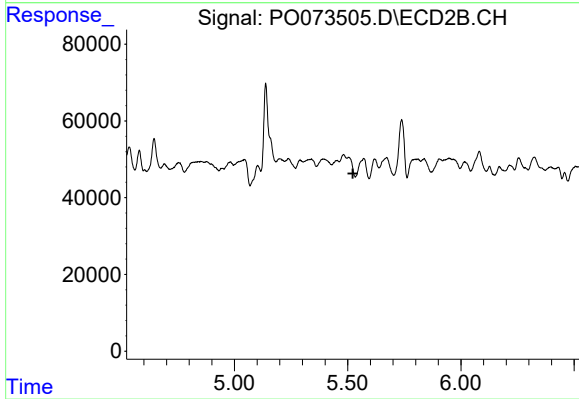
Instrument :
 ECD_O
 ClientSampleId :
 SB-06



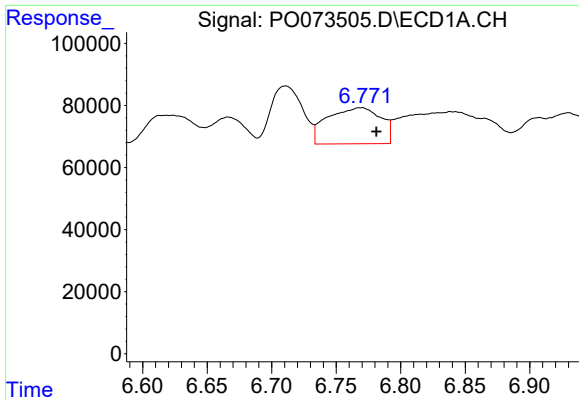
#5 AR-1016-3
 R.T.: 5.481 min
 Delta R.T.: 0.011 min
 Response: 65275
 Conc: 43.90 ng/ml



#6 AR-1016-4
 R.T.: 6.466 min
 Delta R.T.: 0.000 min
 Response: 63432
 Conc: 27.79 ng/ml



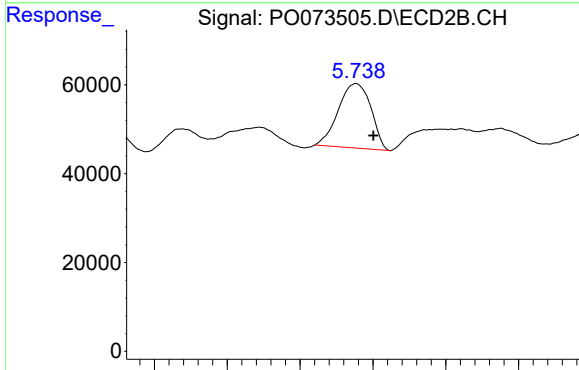
#6 AR-1016-4
 R.T.: 0.000 min
 Exp R.T. : 5.523 min
 Response: 0
 Conc: N.D.



#7 AR-1016-5

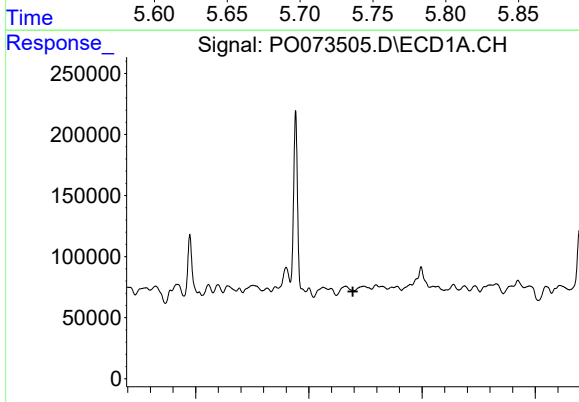
R.T.: 6.769 min
 Delta R.T.: -0.012 min
 Response: 334116
 Conc: 148.60 ng/ml

Instrument :
 ECD_O
ClientSampled :
 SB-06



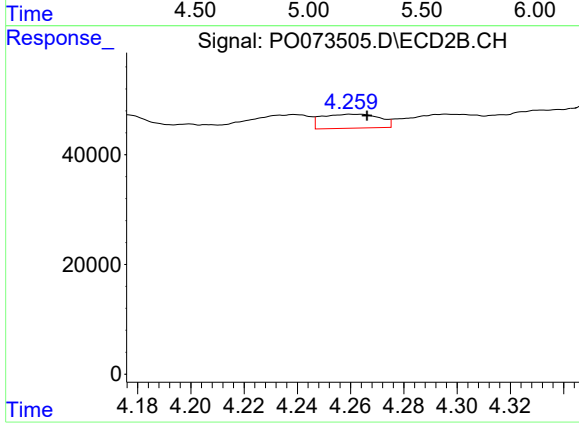
#7 AR-1016-5

R.T.: 5.738 min
 Delta R.T.: -0.012 min
 Response: 225477
 Conc: 149.79 ng/ml



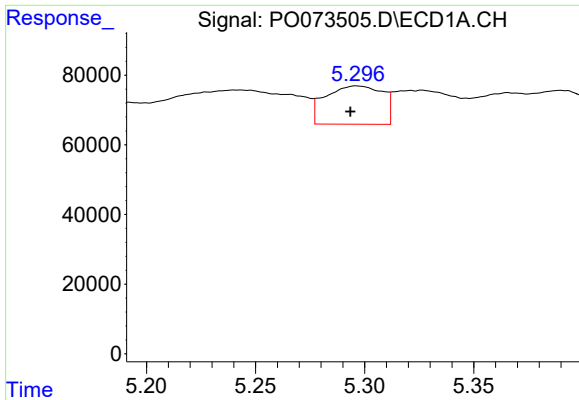
#8 AR-1221-1

R.T.: 0.000 min
 Exp R.T. : 5.195 min
 Response: 0
 Conc: N.D.



#8 AR-1221-1

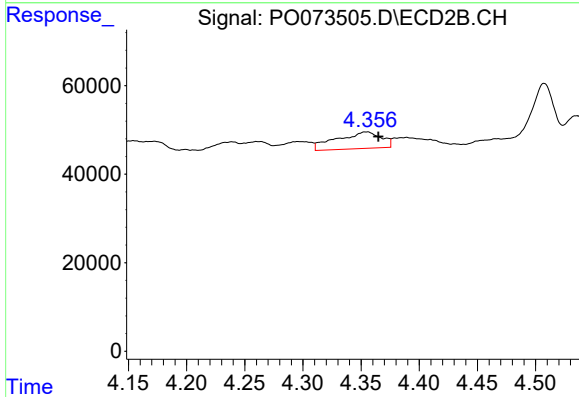
R.T.: 4.261 min
 Delta R.T.: -0.005 min
 Response: 38408
 Conc: 68.15 ng/ml



#9 AR-1221-2

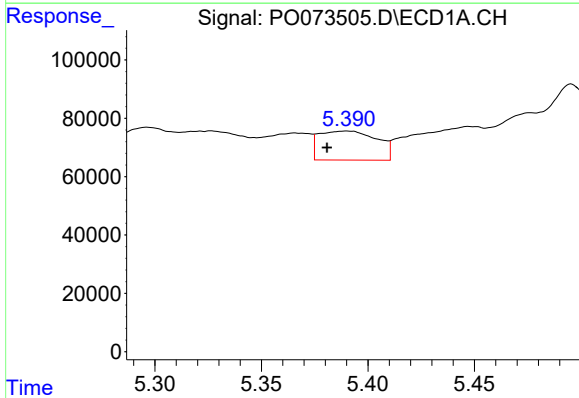
R.T.: 5.296 min
 Delta R.T.: 0.003 min
 Response: 200114
 Conc: 284.53 ng/ml

Instrument :
 ECD_O
 ClientSampleId :
 SB-06



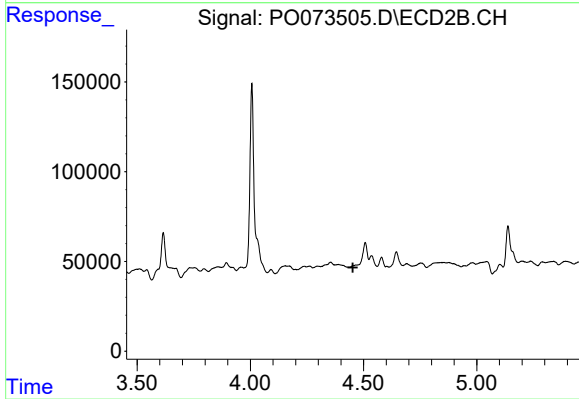
#9 AR-1221-2

R.T.: 4.355 min
 Delta R.T.: -0.010 min
 Response: 100145
 Conc: 247.74 ng/ml



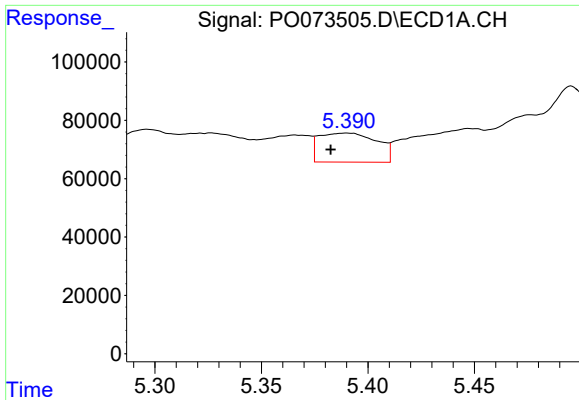
#10 AR-1221-3

R.T.: 5.390 min
 Delta R.T.: 0.009 min
 Response: 187816
 Conc: 83.77 ng/ml



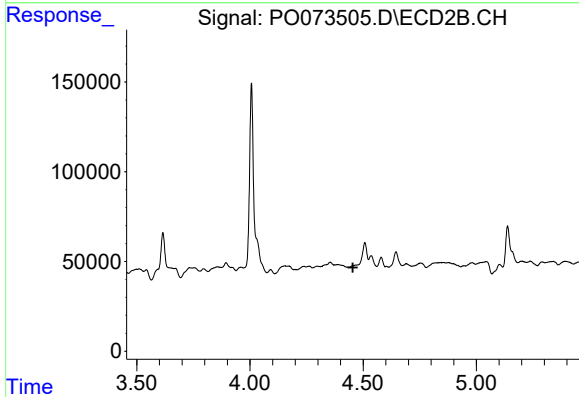
#10 AR-1221-3

R.T.: 0.000 min
 Exp R.T. : 4.453 min
 Response: 0
 Conc: N.D.

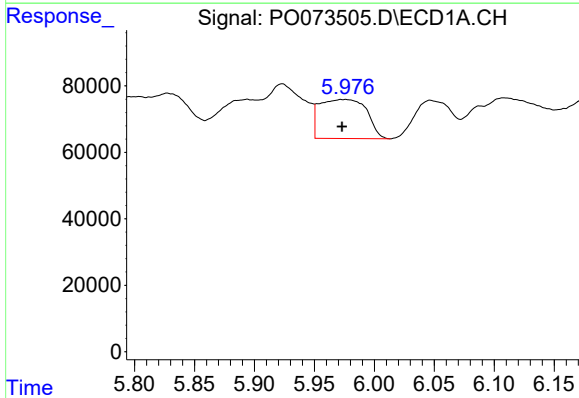


#11 AR-1232-1
 R.T.: 5.390 min
 Delta R.T.: 0.007 min
 Response: 187816
 Conc: 101.77 ng/ml

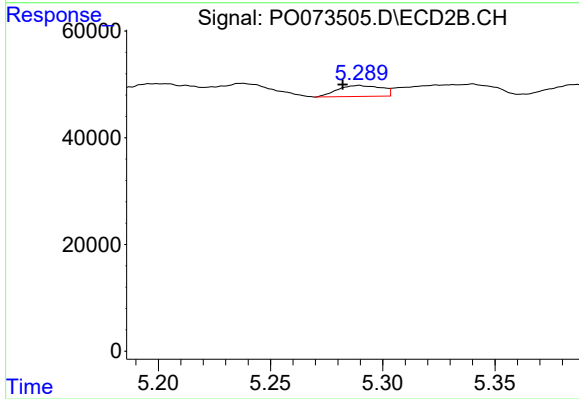
Instrument :
 ECD_O
 ClientSampled :
 SB-06



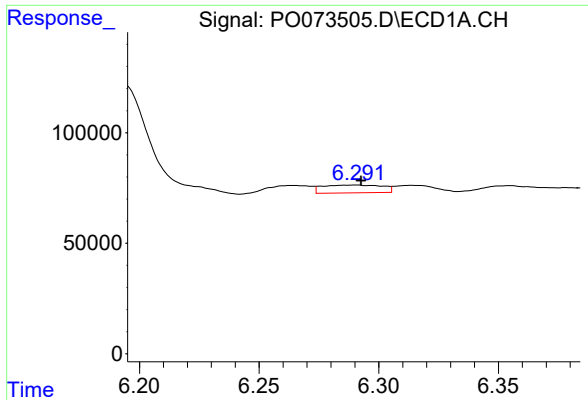
#11 AR-1232-1
 R.T.: 0.000 min
 Exp R.T. : 4.454 min
 Response: 0
 Conc: N.D.



#12 AR-1232-2
 R.T.: 5.976 min
 Delta R.T.: 0.002 min
 Response: 320489
 Conc: 336.78 ng/ml

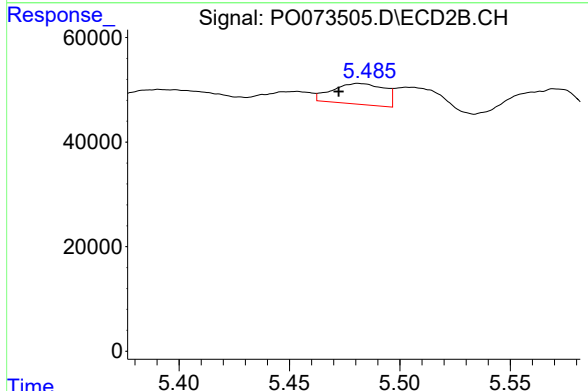


#12 AR-1232-2
 R.T.: 5.289 min
 Delta R.T.: 0.007 min
 Response: 28120
 Conc: 23.53 ng/ml

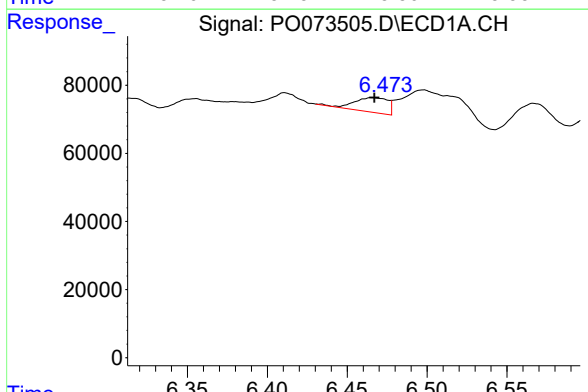


#13 AR-1232-3
 R.T.: 6.290 min
 Delta R.T.: -0.002 min
 Response: 61064
 Conc: 31.22 ng/ml

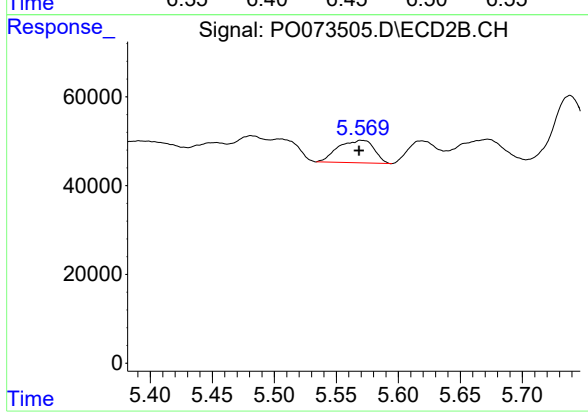
Instrument :
 ECD_O
 ClientSampled :
 SB-06



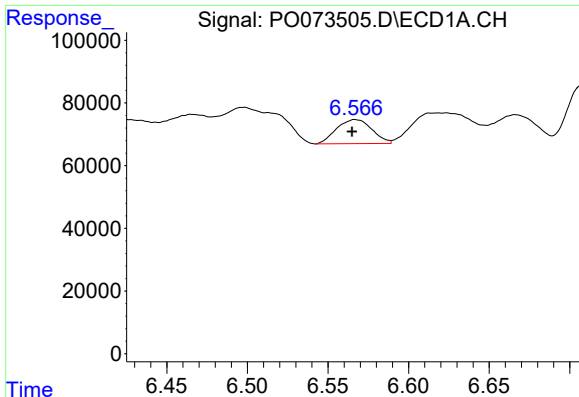
#13 AR-1232-3
 R.T.: 5.481 min
 Delta R.T.: 0.009 min
 Response: 65275
 Conc: 104.05 ng/ml



#14 AR-1232-4
 R.T.: 6.466 min
 Delta R.T.: -0.001 min
 Response: 63432
 Conc: 64.16 ng/ml



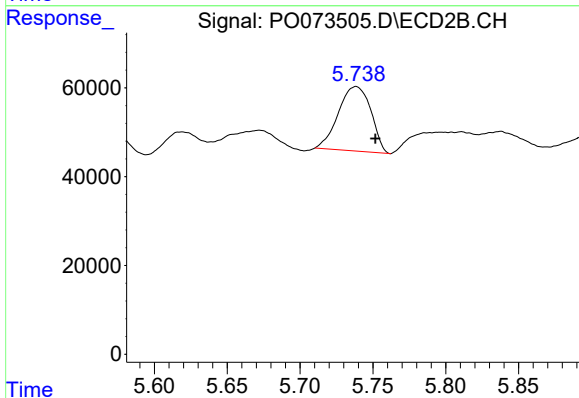
#14 AR-1232-4
 R.T.: 5.571 min
 Delta R.T.: 0.002 min
 Response: 102117
 Conc: 189.41 ng/ml



#15 AR-1232-5

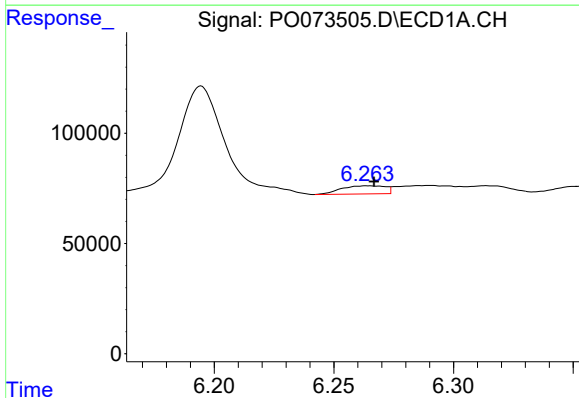
R.T.: 6.567 min
 Delta R.T.: 0.002 min
 Response: 117143
 Conc: 174.00 ng/ml

Instrument :
 ECD_O
 ClientSampleId :
 SB-06



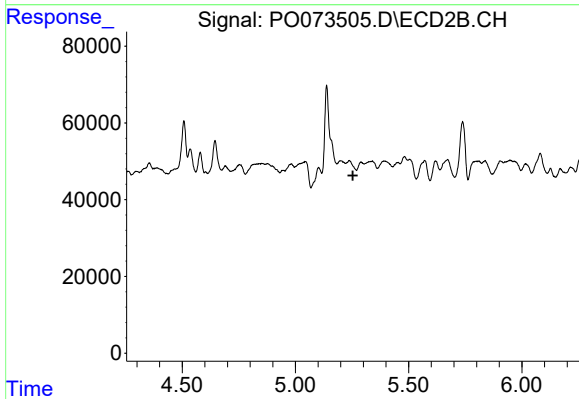
#15 AR-1232-5

R.T.: 5.738 min
 Delta R.T.: -0.013 min
 Response: 225477
 Conc: 381.66 ng/ml



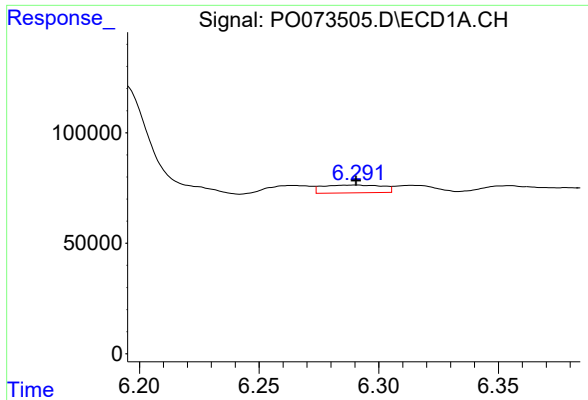
#16 AR-1242-1

R.T.: 6.264 min
 Delta R.T.: -0.003 min
 Response: 47251
 Conc: 17.92 ng/ml



#16 AR-1242-1

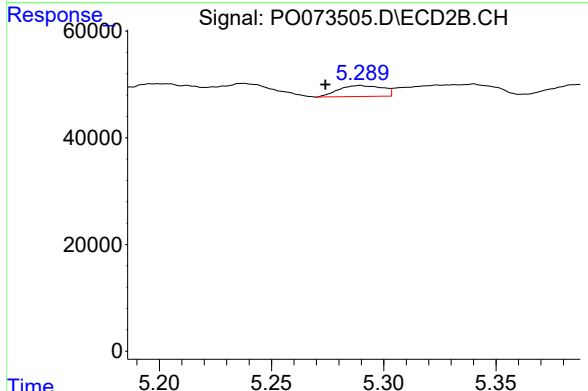
R.T.: 0.000 min
 Exp R.T. : 5.254 min
 Response: 0
 Conc: N.D.



#17 AR-1242-2

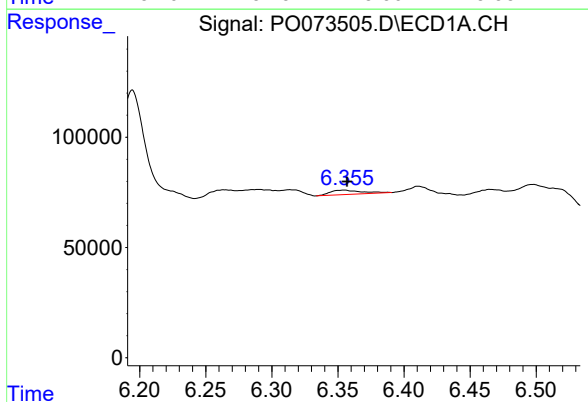
R.T.: 6.290 min
 Delta R.T.: 0.000 min
 Response: 61064
 Conc: 16.70 ng/ml

Instrument :
 ECD_O
 ClientSampled :
 SB-06



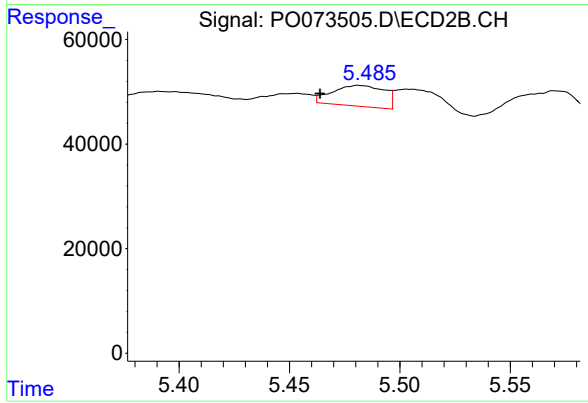
#17 AR-1242-2

R.T.: 5.289 min
 Delta R.T.: 0.015 min
 Response: 28120
 Conc: 12.43 ng/ml



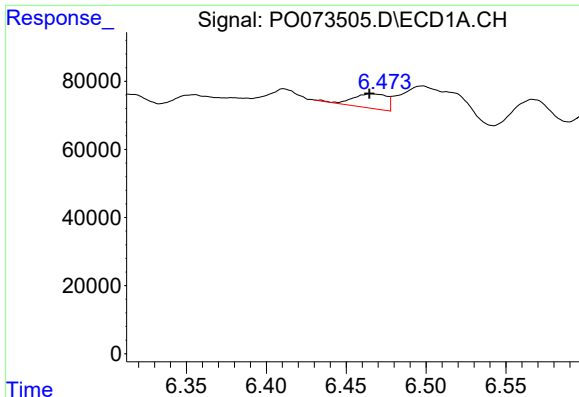
#18 AR-1242-3

R.T.: 6.355 min
 Delta R.T.: -0.002 min
 Response: 33220
 Conc: 15.06 ng/ml



#18 AR-1242-3

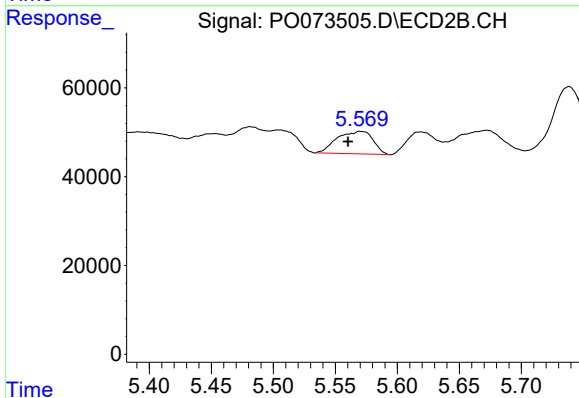
R.T.: 5.481 min
 Delta R.T.: 0.018 min
 Response: 65275
 Conc: 54.37 ng/ml



#19 AR-1242-4

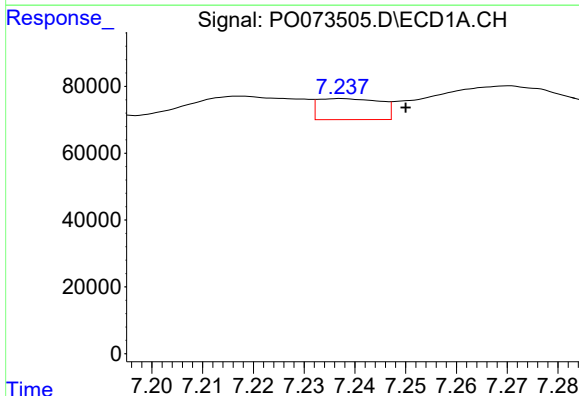
R.T.: 6.466 min
 Delta R.T.: 0.001 min
 Response: 63432
 Conc: 34.17 ng/ml

Instrument :
 ECD_O
 ClientSampled :
 SB-06



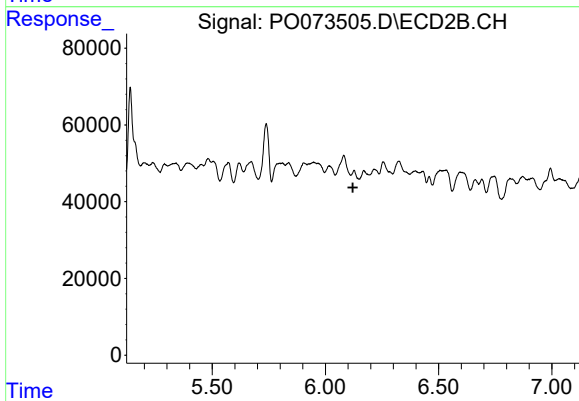
#19 AR-1242-4

R.T.: 5.571 min
 Delta R.T.: 0.010 min
 Response: 102117
 Conc: 92.91 ng/ml



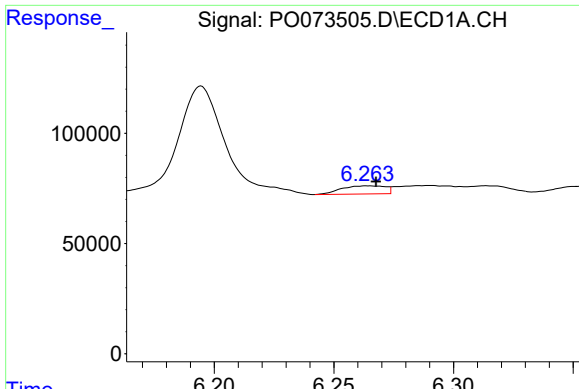
#20 AR-1242-5

R.T.: 7.237 min
 Delta R.T.: -0.013 min
 Response: 53619
 Conc: 25.49 ng/ml



#20 AR-1242-5

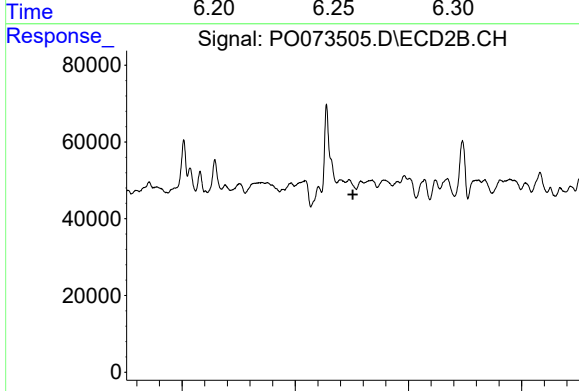
R.T.: 0.000 min
 Exp R.T. : 6.121 min
 Response: 0
 Conc: N.D.



#21 AR-1248-1

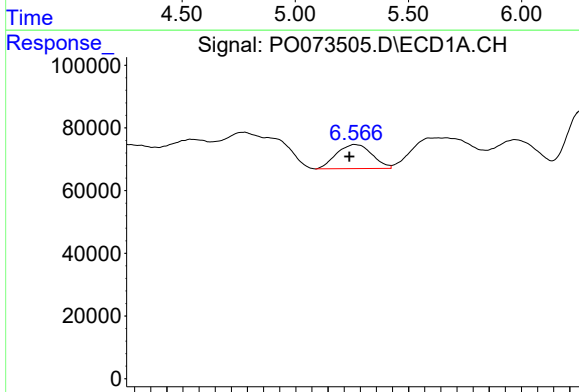
R.T.: 6.264 min
 Delta R.T.: -0.003 min
 Response: 47251
 Conc: 23.64 ng/ml

Instrument :
 ECD_O
 ClientSampled :
 SB-06



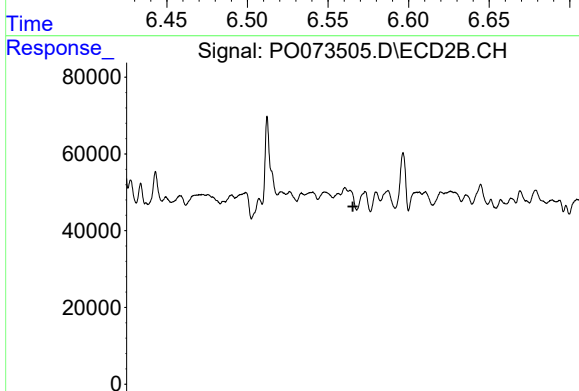
#21 AR-1248-1

R.T.: 0.000 min
 Exp R.T. : 5.255 min
 Response: 0
 Conc: N.D.



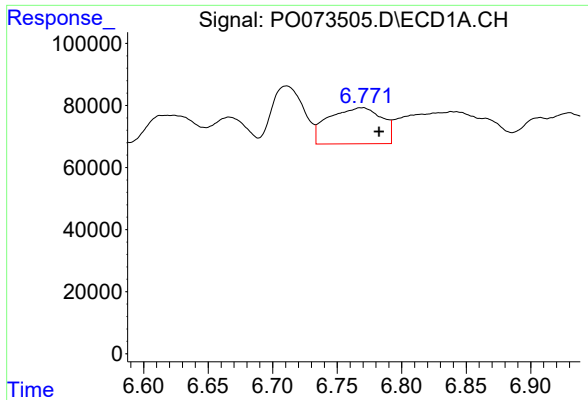
#22 AR-1248-2

R.T.: 6.567 min
 Delta R.T.: 0.004 min
 Response: 117143
 Conc: 45.31 ng/ml



#22 AR-1248-2

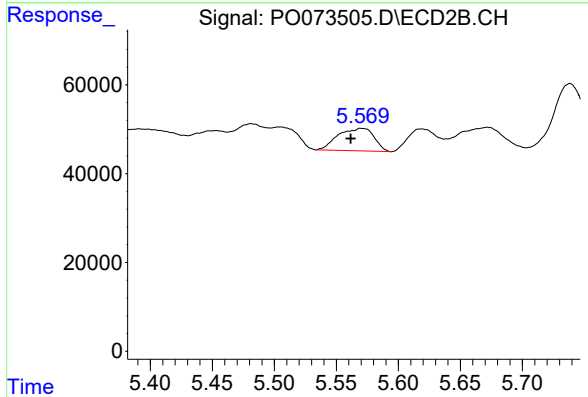
R.T.: 0.000 min
 Exp R.T. : 5.517 min
 Response: 0
 Conc: N.D.



#23 AR-1248-3

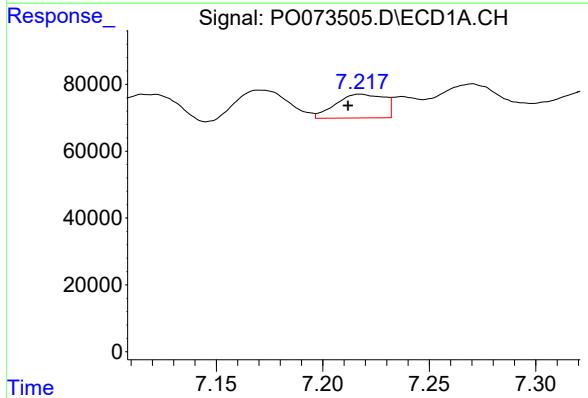
R.T.: 6.769 min
 Delta R.T.: -0.013 min
 Response: 334116
 Conc: 109.03 ng/ml

Instrument :
 ECD_O
ClientSampleId :
 SB-06



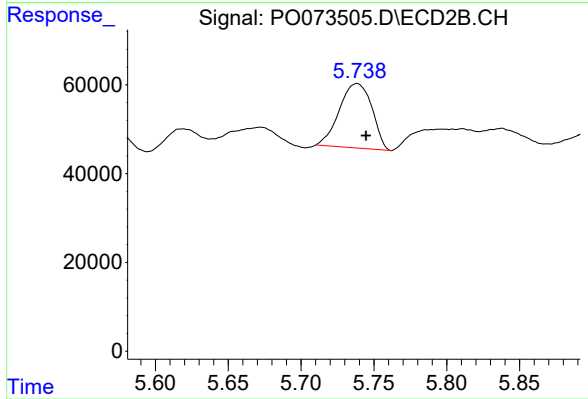
#23 AR-1248-3

R.T.: 5.571 min
 Delta R.T.: 0.009 min
 Response: 102117
 Conc: 59.84 ng/ml



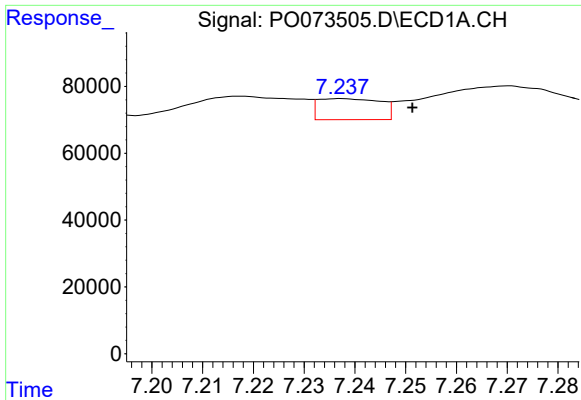
#24 AR-1248-4

R.T.: 7.218 min
 Delta R.T.: 0.006 min
 Response: 112384
 Conc: 30.13 ng/ml



#24 AR-1248-4

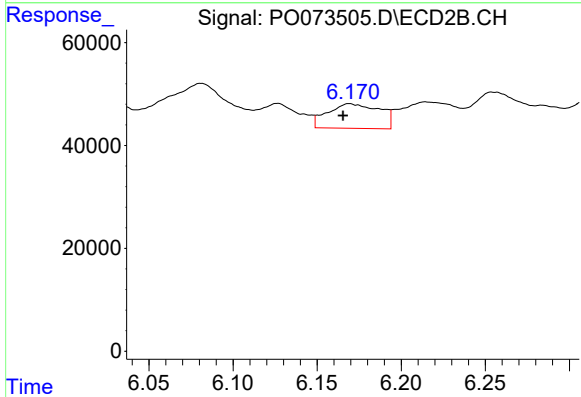
R.T.: 5.738 min
 Delta R.T.: -0.006 min
 Response: 225477
 Conc: 109.68 ng/ml



#25 AR-1248-5

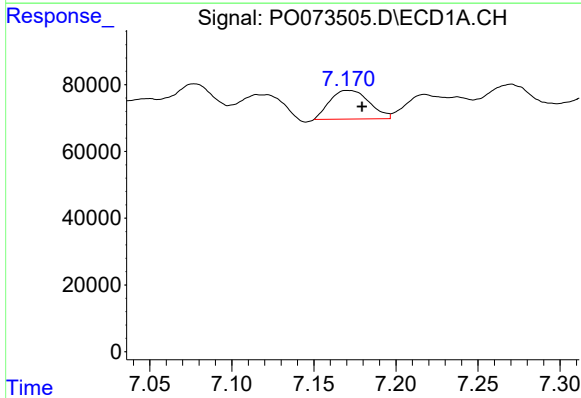
R.T.: 7.237 min
 Delta R.T.: -0.014 min
 Response: 53619
 Conc: 14.99 ng/ml

Instrument :
 ECD_O
 ClientSampled :
 SB-06



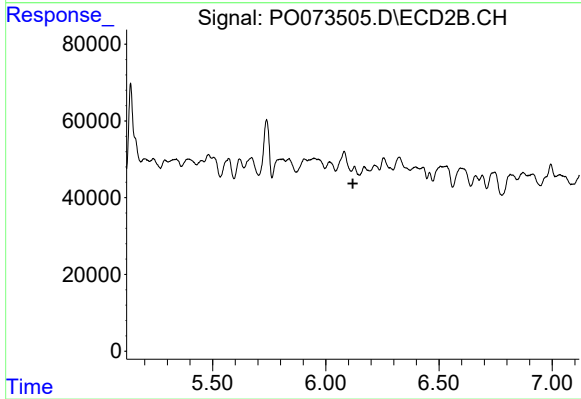
#25 AR-1248-5

R.T.: 6.169 min
 Delta R.T.: 0.004 min
 Response: 103247
 Conc: 46.50 ng/ml



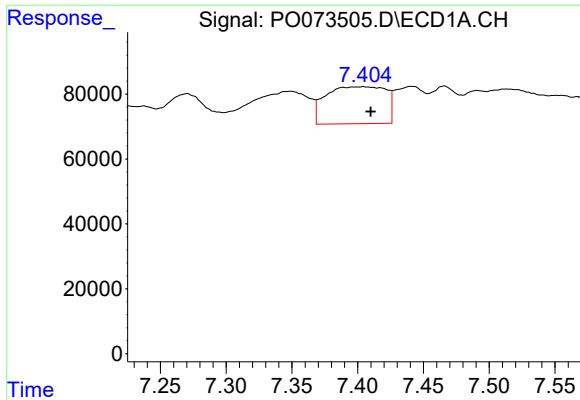
#26 AR-1254-1

R.T.: 7.171 min
 Delta R.T.: -0.009 min
 Response: 143324
 Conc: 41.44 ng/ml



#26 AR-1254-1

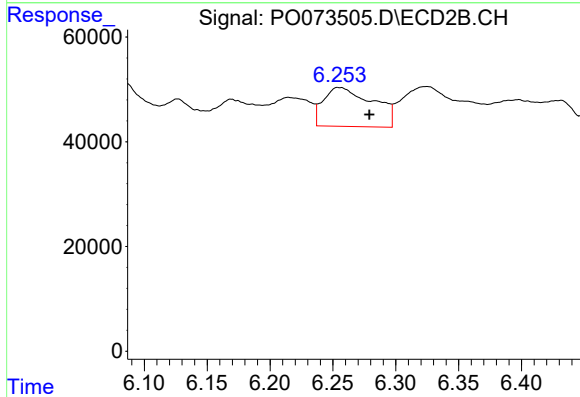
R.T.: 0.000 min
 Exp R.T.: 6.120 min
 Response: 0
 Conc: N.D.



#27 AR-1254-2

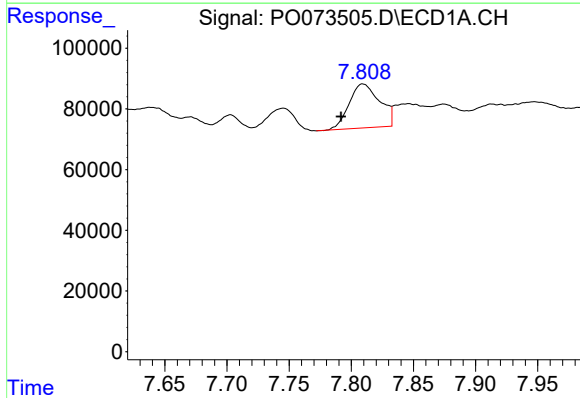
R.T.: 7.404 min
 Delta R.T.: -0.006 min
 Response: 361902
 Conc: 66.43 ng/ml

Instrument :
 ECD_O
 ClientSampleId :
 SB-06



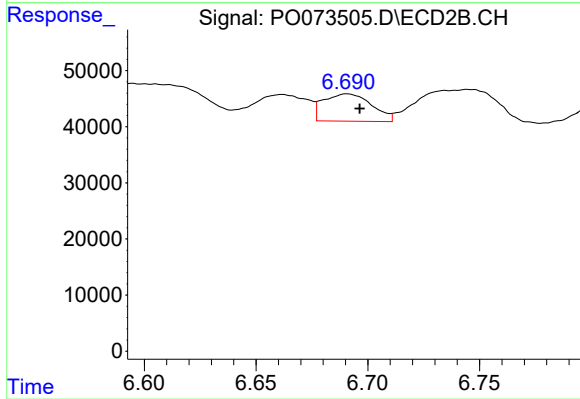
#27 AR-1254-2

R.T.: 6.255 min
 Delta R.T.: -0.024 min
 Response: 203288
 Conc: 74.46 ng/ml



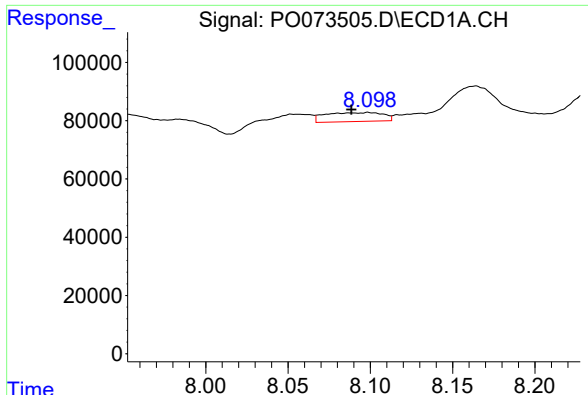
#28 AR-1254-3

R.T.: 7.809 min
 Delta R.T.: 0.018 min
 Response: 248476
 Conc: 43.84 ng/ml



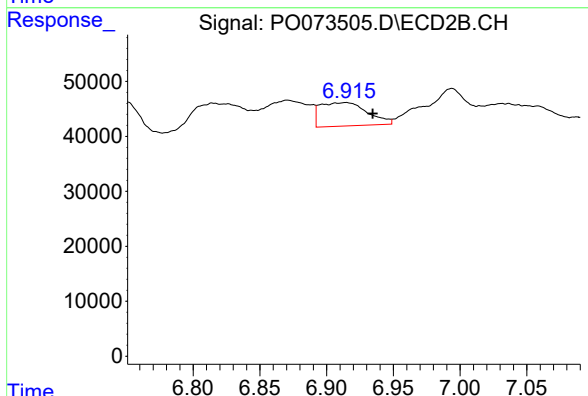
#28 AR-1254-3

R.T.: 6.691 min
 Delta R.T.: -0.005 min
 Response: 73184
 Conc: 17.30 ng/ml

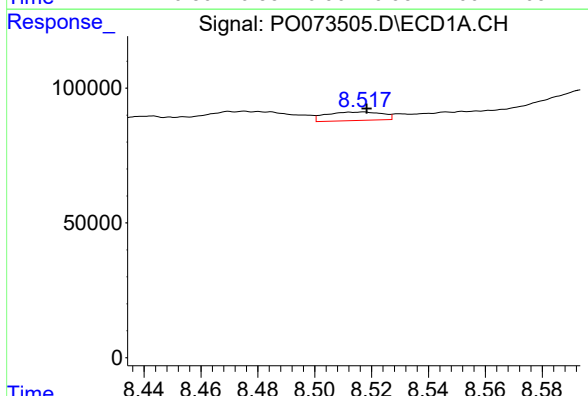


#29 AR-1254-4
 R.T.: 8.099 min
 Delta R.T.: 0.010 min
 Response: 75462
 Conc: 15.60 ng/ml

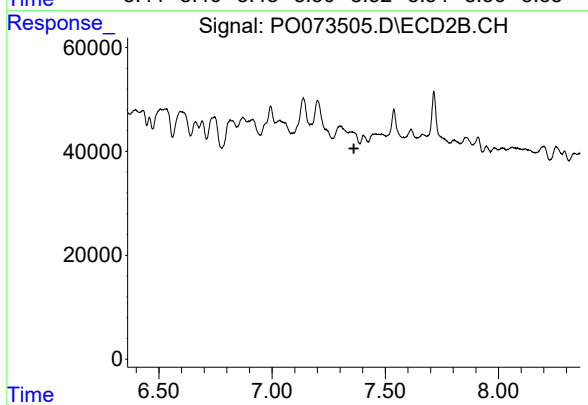
Instrument :
 ECD_O
 ClientSampled :
 SB-06



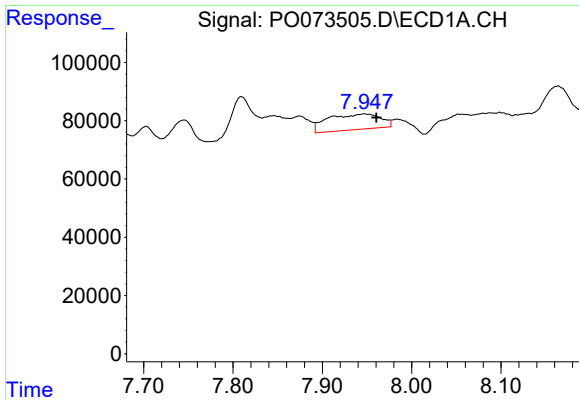
#29 AR-1254-4
 R.T.: 6.914 min
 Delta R.T.: -0.021 min
 Response: 104978
 Conc: 36.36 ng/ml



#30 AR-1254-5
 R.T.: 8.516 min
 Delta R.T.: -0.003 min
 Response: 43448
 Conc: 9.13 ng/ml



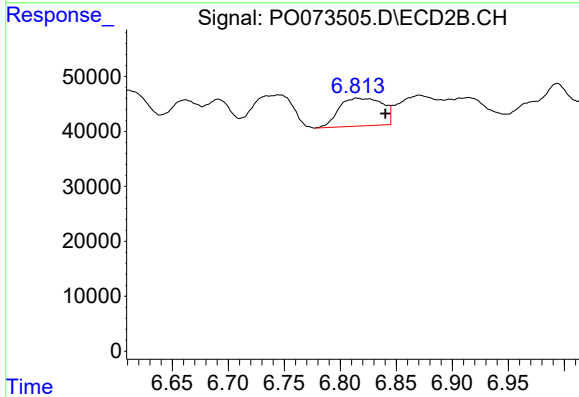
#30 AR-1254-5
 R.T.: 0.000 min
 Exp R.T. : 7.361 min
 Response: 0
 Conc: N.D.



#31 AR-1260-1

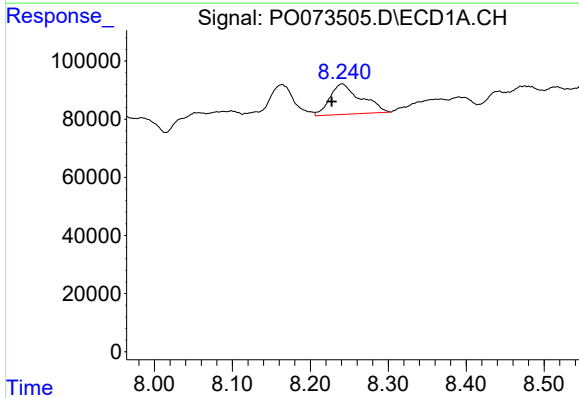
R.T.: 7.947 min
 Delta R.T.: -0.013 min
 Response: 219898
 Conc: 54.49 ng/ml

Instrument :
 ECD_O
 ClientSampleId :
 SB-06



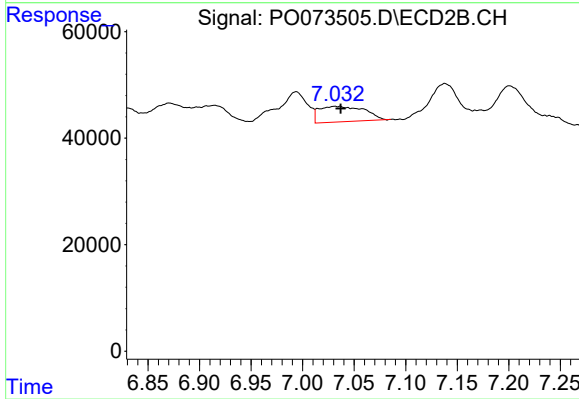
#31 AR-1260-1

R.T.: 6.816 min
 Delta R.T.: -0.024 min
 Response: 137148
 Conc: 51.05 ng/ml



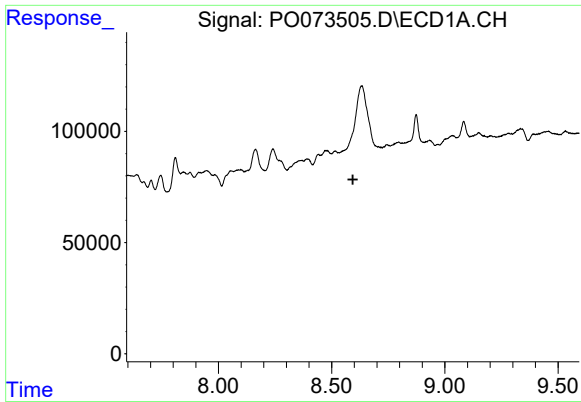
#32 AR-1260-2

R.T.: 8.241 min
 Delta R.T.: 0.014 min
 Response: 290742
 Conc: 52.90 ng/ml



#32 AR-1260-2

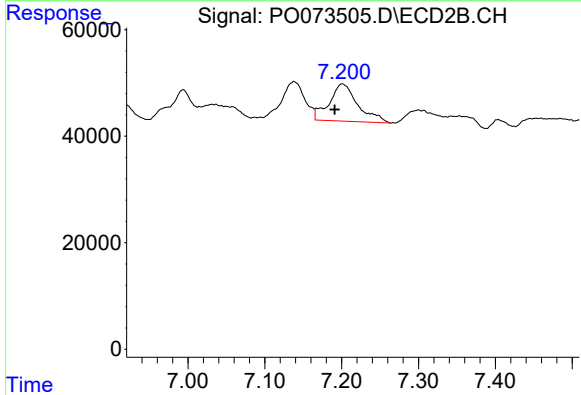
R.T.: 7.033 min
 Delta R.T.: -0.004 min
 Response: 87125
 Conc: 26.12 ng/ml



#33 AR-1260-3

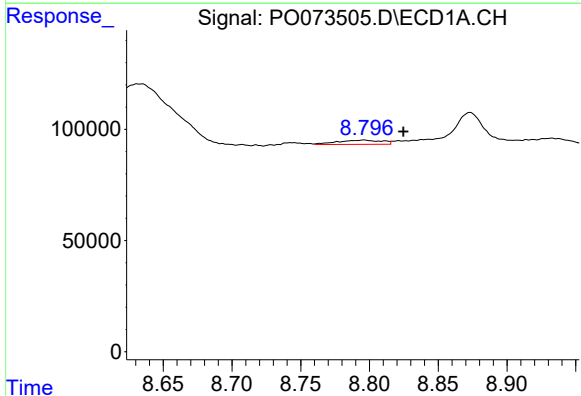
R.T.: 0.000 min
 Exp R.T.: 8.594 min
 Response: 0
 Conc: N.D.

Instrument :
 ECD_O
 ClientSampled :
 SB-06



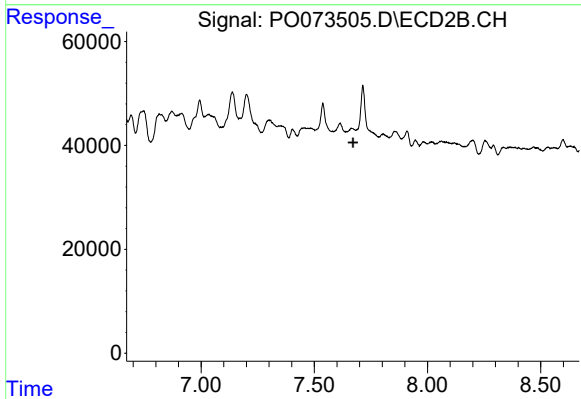
#33 AR-1260-3

R.T.: 7.201 min
 Delta R.T.: 0.010 min
 Response: 180595
 Conc: 58.46 ng/ml



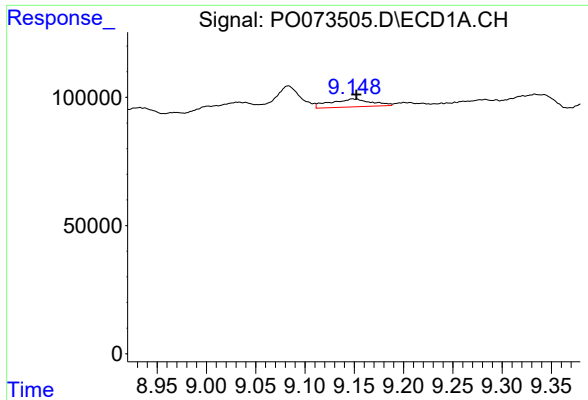
#34 AR-1260-4

R.T.: 8.796 min
 Delta R.T.: -0.029 min
 Response: 42810
 Conc: 9.92 ng/ml



#34 AR-1260-4

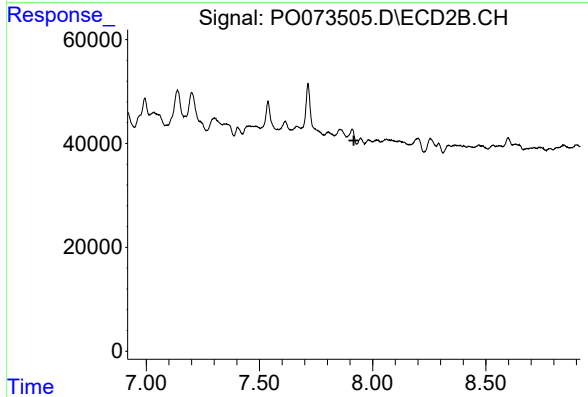
R.T.: 0.000 min
 Exp R.T.: 7.671 min
 Response: 0
 Conc: N.D.



#35 AR-1260-5

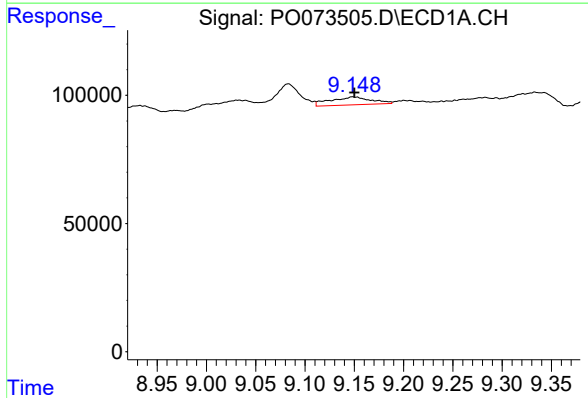
R.T.: 9.149 min
 Delta R.T.: -0.003 min
 Response: 90385
 Conc: 9.15 ng/ml

Instrument :
 ECD_O
 ClientSampleId :
 SB-06



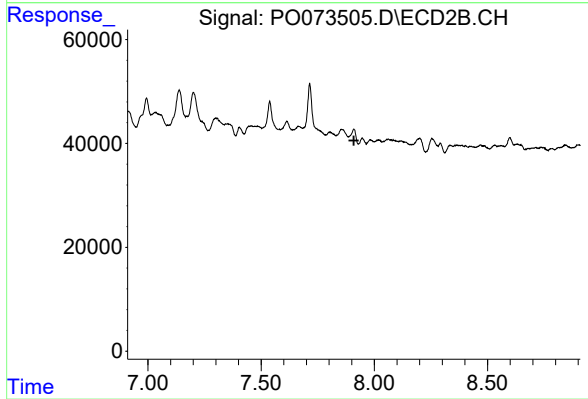
#35 AR-1260-5

R.T.: 0.000 min
 Exp R.T. : 7.917 min
 Response: 0
 Conc: N.D.



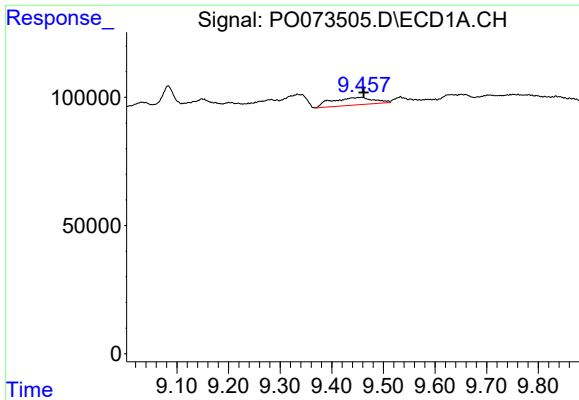
#37 AR-1262-2

R.T.: 9.149 min
 Delta R.T.: 0.000 min
 Response: 90385
 Conc: 8.36 ng/ml



#37 AR-1262-2

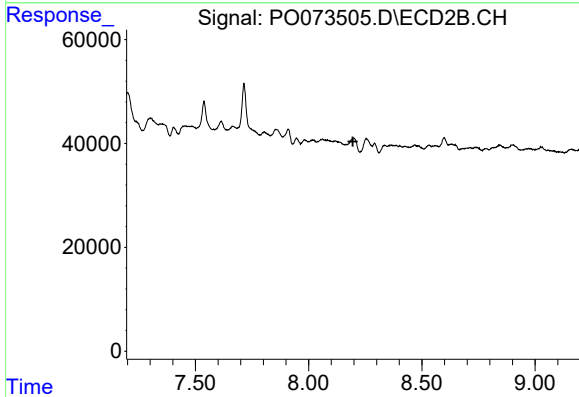
R.T.: 0.000 min
 Exp R.T. : 7.910 min
 Response: 0
 Conc: N.D.



#38 AR-1262-3

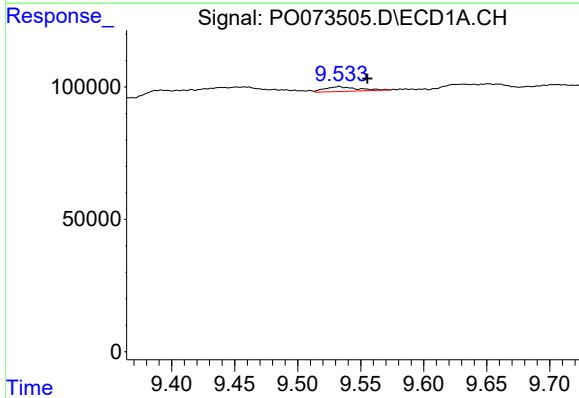
R.T.: 9.457 min
 Delta R.T.: -0.005 min
 Response: 166097
 Conc: 22.63 ng/ml

Instrument :
 ECD_O
 ClientSampleId :
 SB-06



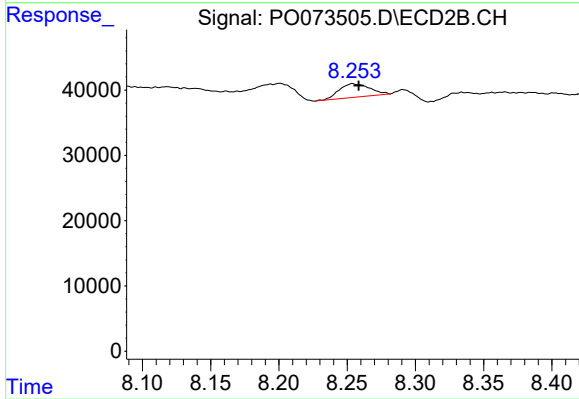
#38 AR-1262-3

R.T.: 0.000 min
 Exp R.T. : 8.195 min
 Response: 0
 Conc: N.D.



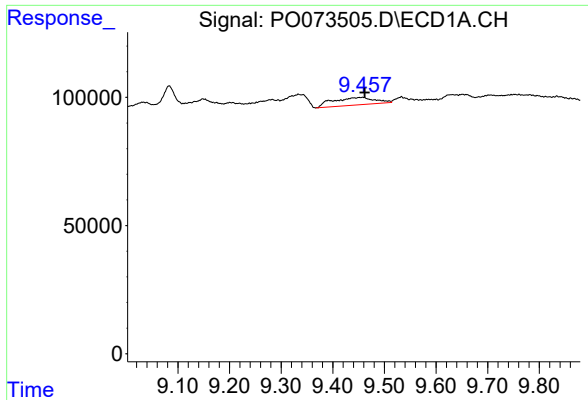
#39 AR-1262-4

R.T.: 9.533 min
 Delta R.T.: -0.023 min
 Response: 32763
 Conc: 5.95 ng/ml



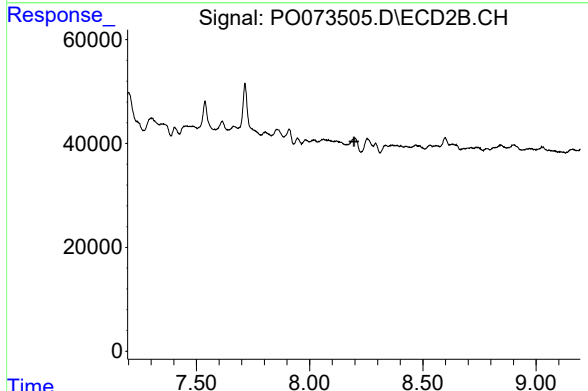
#39 AR-1262-4

R.T.: 8.255 min
 Delta R.T.: -0.004 min
 Response: 32426
 Conc: 6.79 ng/ml

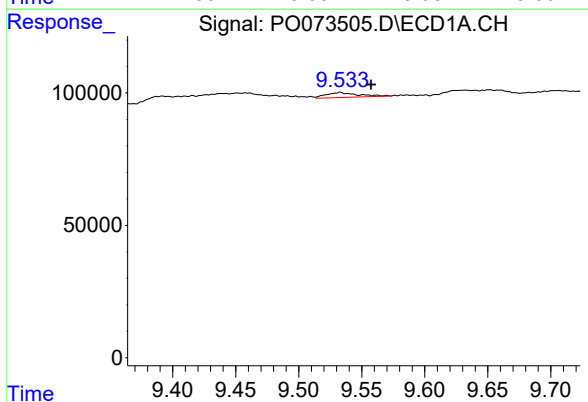


#41 AR-1268-1
 R.T.: 9.457 min
 Delta R.T.: -0.005 min
 Response: 166097
 Conc: 11.89 ng/ml

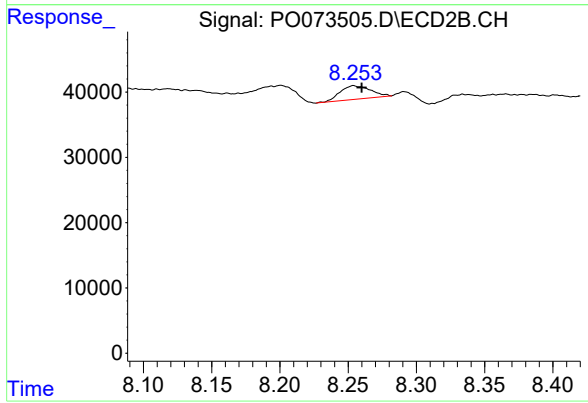
Instrument :
 ECD_O
 ClientSampleId :
 SB-06



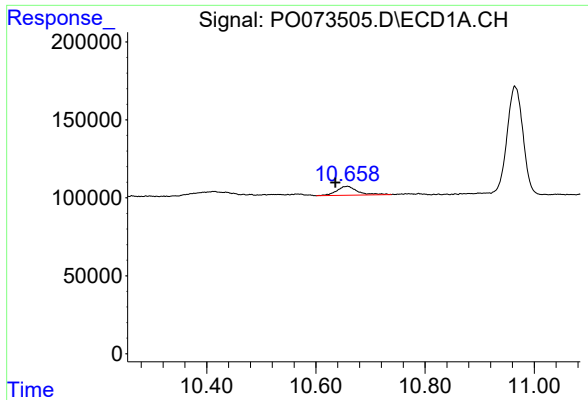
#41 AR-1268-1
 R.T.: 0.000 min
 Exp R.T. : 8.196 min
 Response: 0
 Conc: N.D.



#42 AR-1268-2
 R.T.: 9.533 min
 Delta R.T.: -0.025 min
 Response: 32763
 Conc: 2.70 ng/ml



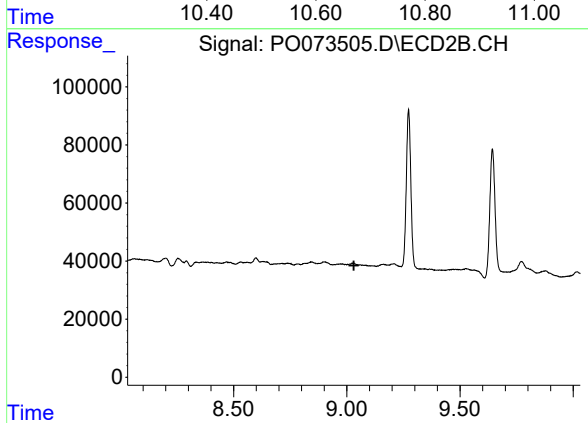
#42 AR-1268-2
 R.T.: 8.255 min
 Delta R.T.: -0.005 min
 Response: 32426
 Conc: 4.44 ng/ml



#45 AR-1268-5

R.T.: 10.657 min
 Delta R.T.: 0.021 min
 Response: 153144
 Conc: 4.81 ng/ml

Instrument :
 ECD_O
ClientSampled :
 SB-06



#45 AR-1268-5

R.T.: 0.000 min
 Exp R.T. : 9.031 min
 Response: 0
 Conc: N.D.