

Data Path : Z:\pestpcbsrv\HPCHEM1\ECD\_0\Data\PO112420\  
 Data File : PO073506.D  
 Signal(s) : Signal #1: ECD1A.CH Signal #2: ECD2B.CH  
 Acq On : 24 Nov 2020 12:22  
 Operator : DD\AJ  
 Sample : L4836-05  
 Misc :  
 ALS Vial : 13 Sample Multiplier: 1

Instrument :  
 ECD\_0  
 ClientSampled :

Integration File signal 1: autoint1.e  
 Integration File signal 2: autoint2.e  
 Quant Time: Nov 25 10:29:27 2020  
 Quant Method : Z:\pestpcbsrv\HPCHEM1\ECD\_0\methods\PO112320.M  
 Quant Title : GC EXTRACTABLES  
 QLast Update : Wed Nov 25 10:04:26 2020  
 Response via : Initial Calibration  
 Integrator: ChemStation 6890 Scale Mode: Small noise peaks clipped

Volume Inj. : 2 µl  
 Signal #1 Phase : ZB-MR1 Signal #2 Phase: ZB-MR2  
 Signal #1 Info : 30Mx0.32mmx 0.50µ Signal #2 Info : 30M x 0.32mm x 0.25µm

Compound	RT#1	RT#2	Resp#1	Resp#2	ng/ml	ng/ml
System Monitoring Compounds						
1) SA Tetrachlo...	4.942	4.006	2055951	1239011	24.578	25.272
2) SA Decachlor...	10.965	9.273	2150636	1157957	26.084	25.255
Target Compounds						
3) L1 AR-1016-1	6.260	0.000	28507	0	8.657	N.D. #
4) L1 AR-1016-2	6.294	0.000	16175	0	3.514	N.D. #
5) L1 AR-1016-3	0.000	5.479	0	70933	N.D.	47.701 #
6) L1 AR-1016-4	0.000	5.516	0	90884	N.D.	76.472 #
7) L1 AR-1016-5	6.774	5.741	224370	89680	99.793	59.576 #
8) L2 AR-1221-1	5.195	0.000	105535	0	106.392	N.D. #
9) L2 AR-1221-2	5.296	4.356	107649	29831	153.057	73.796 #
10) L2 AR-1221-3	5.402f	0.000	197918	0	88.273	N.D. #
11) L3 AR-1232-1	5.402f	0.000	197918	0	107.245	N.D. #
12) L3 AR-1232-2	5.971	0.000	302363	0	317.732	N.D. #
13) L3 AR-1232-3	6.294	5.479	16175	70933	8.269	113.074 #
14) L3 AR-1232-4	0.000	5.565	0	81011	N.D.	150.263 #
15) L3 AR-1232-5	6.561	5.741	151110	89680	224.449	151.800 #
16) L4 AR-1242-1	6.260	0.000	28507	0	10.809	N.D. #
17) L4 AR-1242-2	6.294	0.000	16175	0	4.425	N.D. #
18) L4 AR-1242-3	0.000	5.479	0	70933	N.D.	59.081 #
19) L4 AR-1242-4	6.497f	5.565	143588	81011	77.358	73.707
20) L4 AR-1242-5	7.251	6.121	118805	253640	56.483	163.810 #
21) L5 AR-1248-1	6.260	0.000	28507	0	14.260	N.D. #
22) L5 AR-1248-2	6.561	5.516	151110	90884	58.452	53.741
23) L5 AR-1248-3	6.774	5.565	224370	81011	73.214	47.473 #
24) L5 AR-1248-4	7.210	5.741	70430	89680	18.881	43.625 #
25) L5 AR-1248-5	7.251	6.166	118805	45098	33.205	20.310 #
26) L6 AR-1254-1	7.177	6.121	274834	253640	79.470	81.457
27) L6 AR-1254-2	7.408	6.280	610178	302535	112.001	110.818
28) L6 AR-1254-3	7.792	6.696	703376	580077	124.112	137.159
29) L6 AR-1254-4	8.087	6.934	380842	261102	78.717	90.439
30) L6 AR-1254-5	8.515	7.361	580165	519608	121.874	140.695
31) L7 AR-1260-1	7.956	6.833	407373	429417	100.954	159.826 #
32) L7 AR-1260-2	8.223	7.031	466367	367330	84.858	110.128 #
33) L7 AR-1260-3	0.000	7.181	0	282065	N.D.	91.308 #
34) L7 AR-1260-4	8.816	7.663	382965	133878	88.728	54.404 #
35) L7 AR-1260-5	9.147	7.909	323260	228073	32.736	36.815
36) L8 AR-1262-1	0.000	7.361	0	519608	N.D.	268.124 #
37) L8 AR-1262-2	9.147	7.909	323260	228073	29.884	34.786
38) L8 AR-1262-3	9.458	8.195	398106	180657	54.238	66.956
39) L8 AR-1262-4	9.552	8.258	139227	272026	25.300	56.972 #
40) L8 AR-1262-5	10.219	8.752	131994	66264	33.911	28.973
41) L9 AR-1268-1	9.458	8.195	398106	180657	28.501	22.177

Data Path : Z:\pestpcbsrv\HPCHEM1\ECD\_0\Data\PO112420\  
 Data File : PO073506.D  
 Signal(s) : Signal #1: ECD1A.CH Signal #2: ECD2B.CH  
 Acq On : 24 Nov 2020 12:22  
 Operator : DD\AJ  
 Sample : L4836-05  
 Misc :  
 ALS Vial : 13 Sample Multiplier: 1

Instrument :  
 ECD\_0  
 ClientSampleId :

Integration File signal 1: autoint1.e  
 Integration File signal 2: autoint2.e  
 Quant Time: Nov 25 10:29:27 2020  
 Quant Method : Z:\pestpcbsrv\HPCHEM1\ECD\_0\methods\PO112320.M  
 Quant Title : GC EXTRACTABLES  
 QLast Update : Wed Nov 25 10:04:26 2020  
 Response via : Initial Calibration  
 Integrator: ChemStation 6890 Scale Mode: Small noise peaks clipped

Volume Inj. : 2 µl  
 Signal #1 Phase : ZB-MR1 Signal #2 Phase: ZB-MR2  
 Signal #1 Info : 30Mx0.32mmx 0.50µ Signal #2 Info : 30M x 0.32mm x 0.25µm

	Compound	RT#1	RT#2	Resp#1	Resp#2	ng/ml	ng/ml
42)	L9 AR-1268-2	9.552	8.258	139227	272026	11.461	37.245 #
43)	L9 AR-1268-3	9.780	8.466	134969	104245	12.812	16.667 #
44)	L9 AR-1268-4	10.219	8.752	131994	66264	29.259	24.738
45)	L9 AR-1268-5	10.631	9.031	487687	229646	15.323	12.589

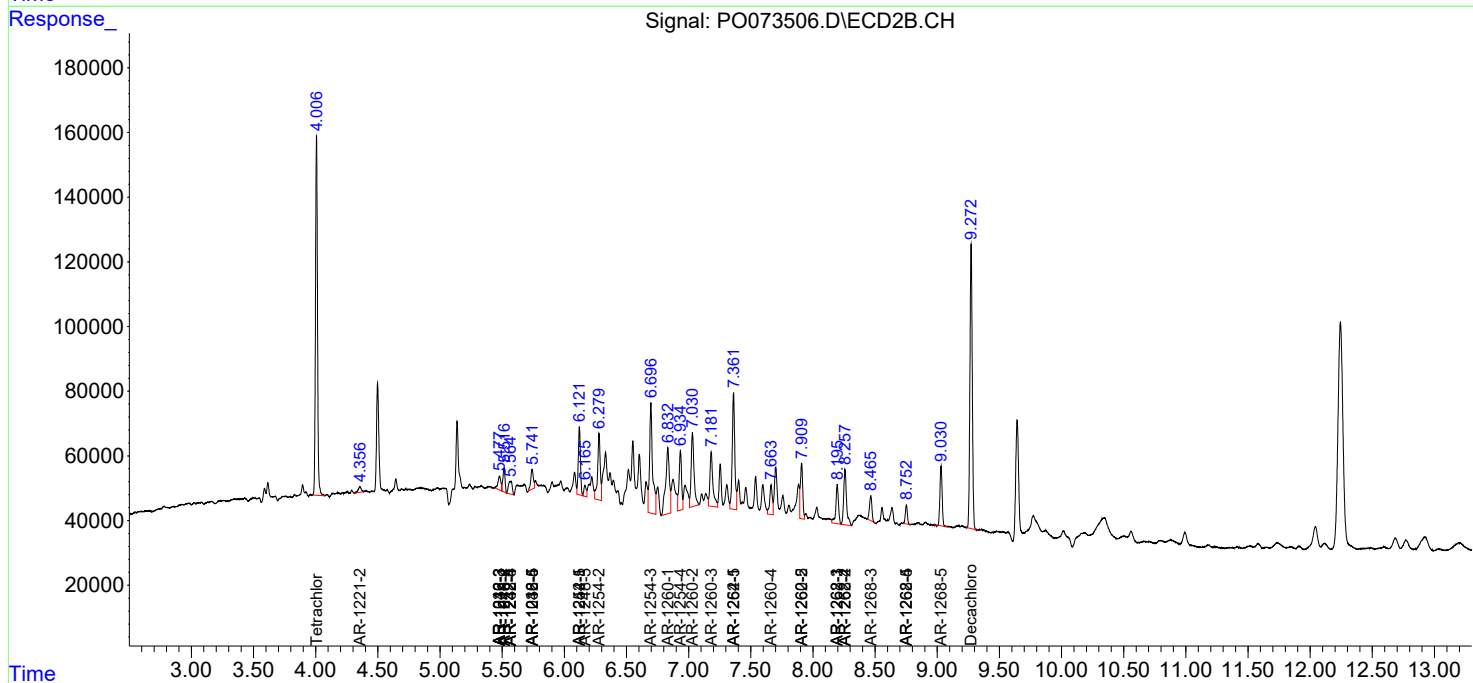
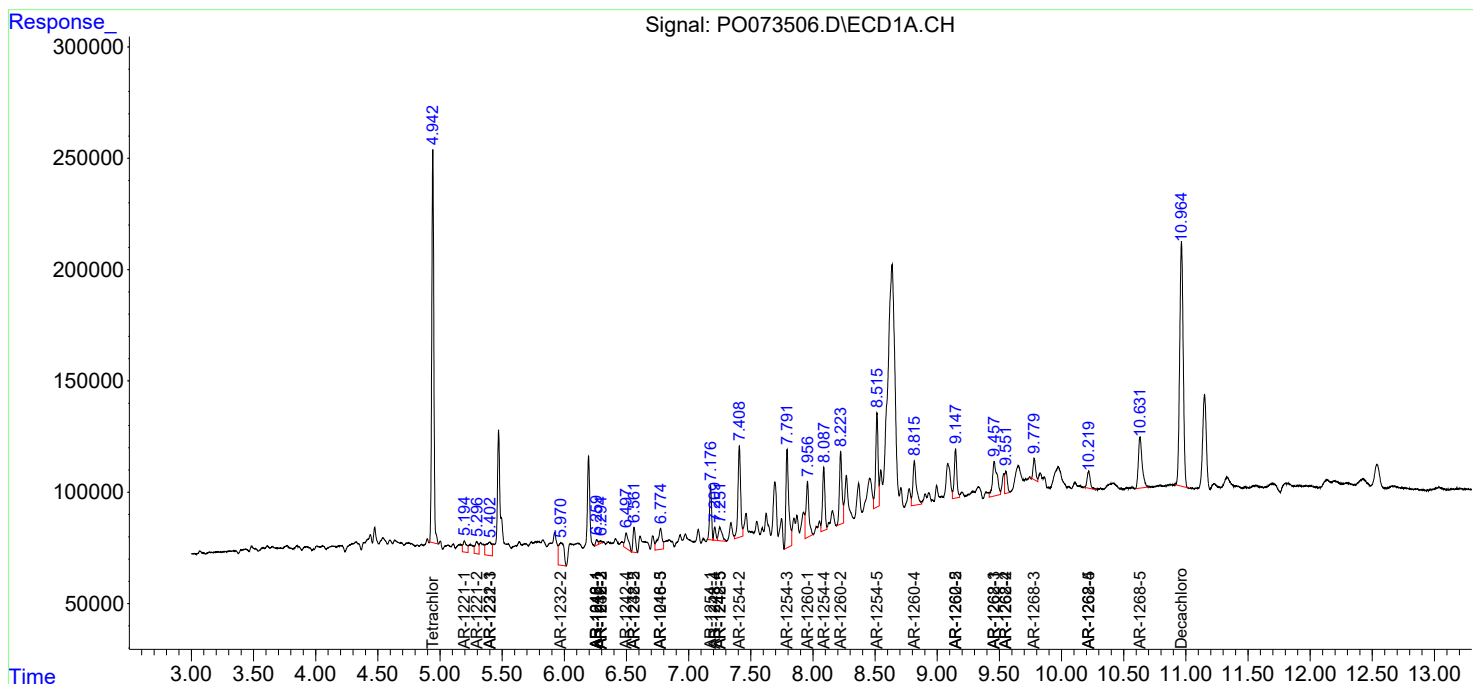
(f)=RT Delta > 1/2 Window (#)=Amounts differ by > 25% (m)=manual int.

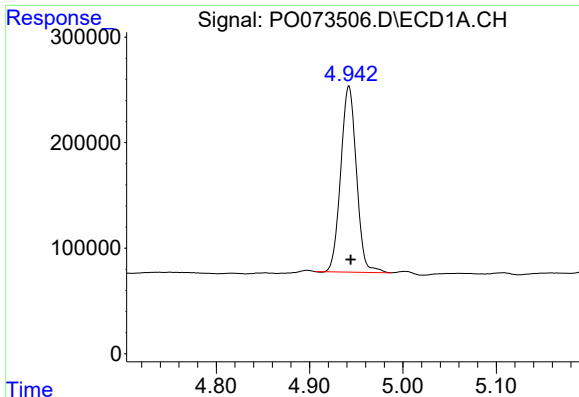
Data Path : Z:\pestpcbsrv\HPCHEM1\ECD\_O\Data\PO112420\  
 Data File : PO073506.D  
 Signal(s) : Signal #1: ECD1A.CH Signal #2: ECD2B.CH  
 Acq On : 24 Nov 2020 12:22  
 Operator : DD\AJ  
 Sample : L4836-05  
 Misc :  
 ALS Vial : 13 Sample Multiplier: 1

Instrument :  
 ECD\_O  
 ClientSampled :

Integration File signal 1: autoint1.e  
 Integration File signal 2: autoint2.e  
 Quant Time: Nov 25 10:29:27 2020  
 Quant Method : Z:\pestpcbsrv\HPCHEM1\ECD\_O\methods\PO112320.M  
 Quant Title : GC EXTRACTABLES  
 QLast Update : Wed Nov 25 10:04:26 2020  
 Response via : Initial Calibration  
 Integrator: ChemStation 6890 Scale Mode: Small noise peaks clipped

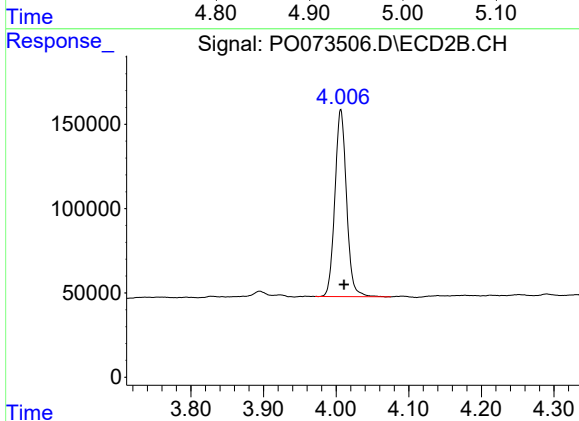
Volume Inj. : 2 µl  
 Signal #1 Phase : ZB-MR1 Signal #2 Phase: ZB-MR2  
 Signal #1 Info : 30Mx0.32mmx 0.50µ Signal #2 Info : 30M x 0.32mm x 0.25µm



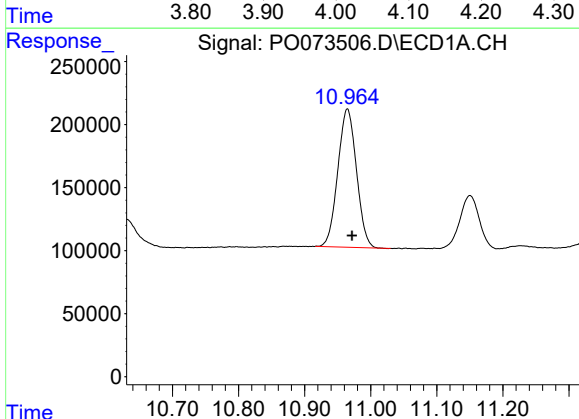


#1 Tetrachloro-m-xylene  
 R.T.: 4.942 min  
 Delta R.T.: -0.002 min  
 Response: 2055951  
 Conc: 24.58 ng/ml

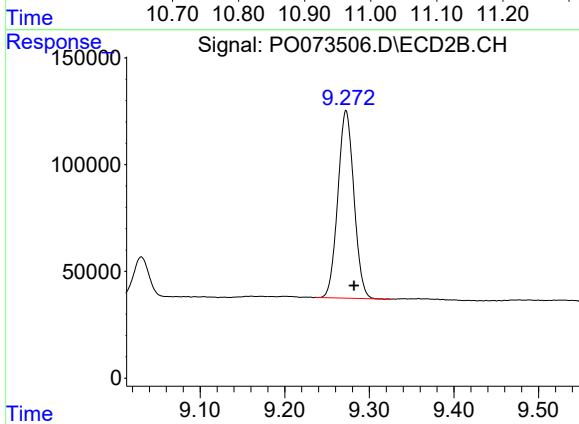
Instrument :  
 ECD\_O  
 ClientSampled :



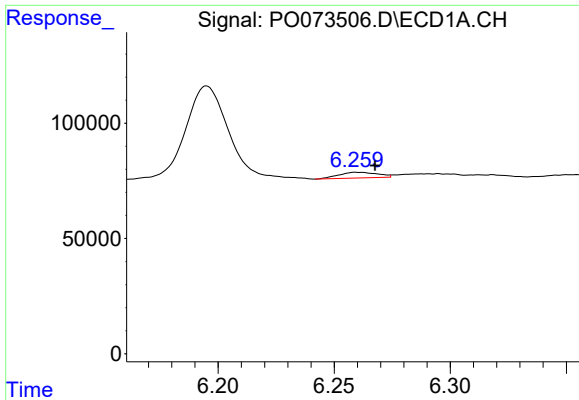
#1 Tetrachloro-m-xylene  
 R.T.: 4.006 min  
 Delta R.T.: -0.005 min  
 Response: 1239011  
 Conc: 25.27 ng/ml



#2 Decachlorobiphenyl  
 R.T.: 10.965 min  
 Delta R.T.: -0.007 min  
 Response: 2150636  
 Conc: 26.08 ng/ml

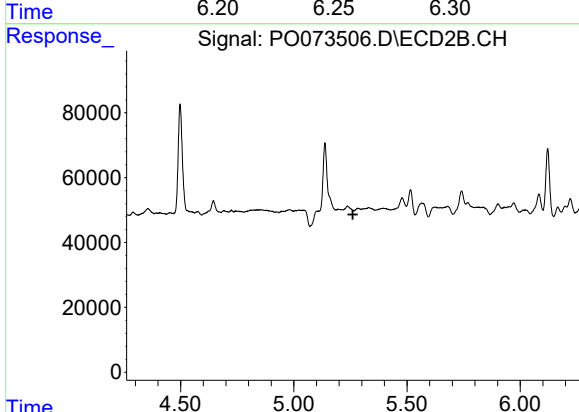


#2 Decachlorobiphenyl  
 R.T.: 9.273 min  
 Delta R.T.: -0.009 min  
 Response: 1157957  
 Conc: 25.25 ng/ml

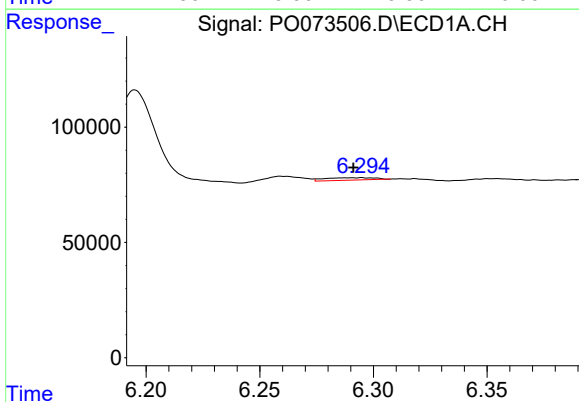


#3 AR-1016-1  
 R.T.: 6.260 min  
 Delta R.T.: -0.007 min  
 Response: 28507  
 Conc: 8.66 ng/ml

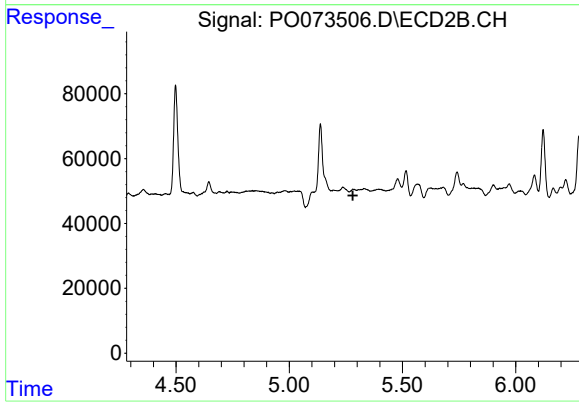
Instrument :  
 ECD\_O  
 ClientSampled :



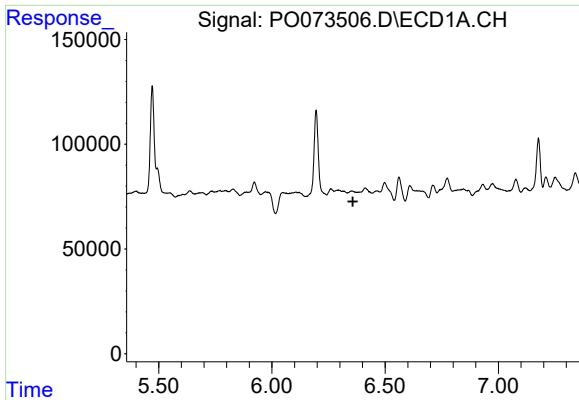
#3 AR-1016-1  
 R.T.: 0.000 min  
 Exp R.T. : 5.261 min  
 Response: 0  
 Conc: N.D.



#4 AR-1016-2  
 R.T.: 6.294 min  
 Delta R.T.: 0.003 min  
 Response: 16175  
 Conc: 3.51 ng/ml



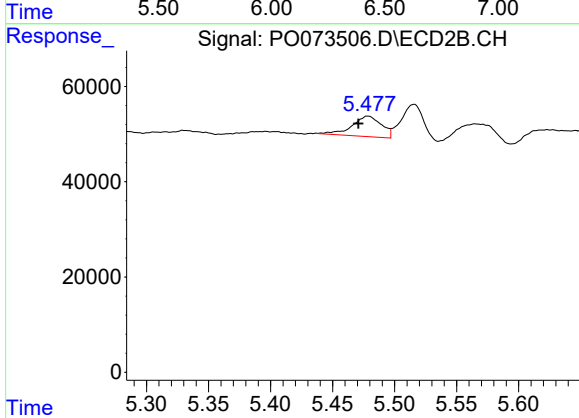
#4 AR-1016-2  
 R.T.: 0.000 min  
 Exp R.T. : 5.281 min  
 Response: 0  
 Conc: N.D.



#5 AR-1016-3

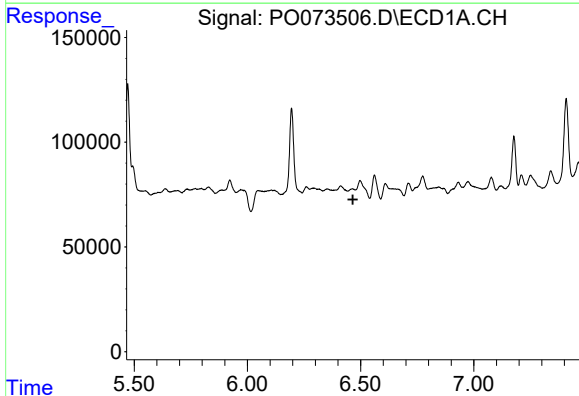
R.T.: 0.000 min  
 Exp R.T.: 6.358 min  
 Response: 0  
 Conc: N.D.

Instrument :  
 ECD\_O  
 ClientSampled :



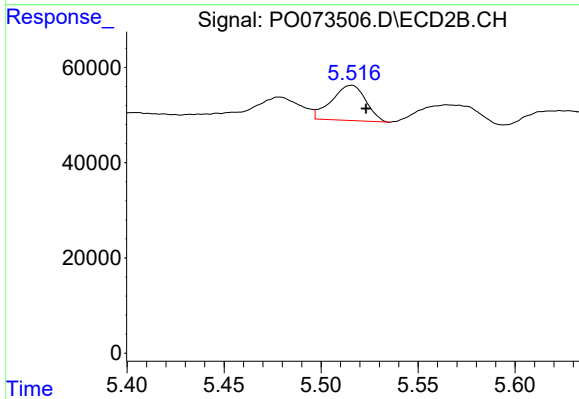
#5 AR-1016-3

R.T.: 5.479 min  
 Delta R.T.: 0.008 min  
 Response: 70933  
 Conc: 47.70 ng/ml



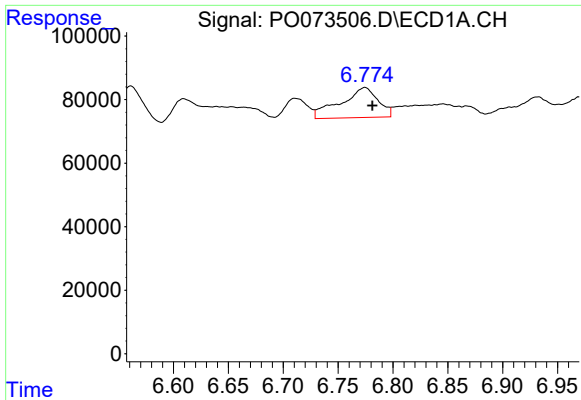
#6 AR-1016-4

R.T.: 0.000 min  
 Exp R.T.: 6.466 min  
 Response: 0  
 Conc: N.D.



#6 AR-1016-4

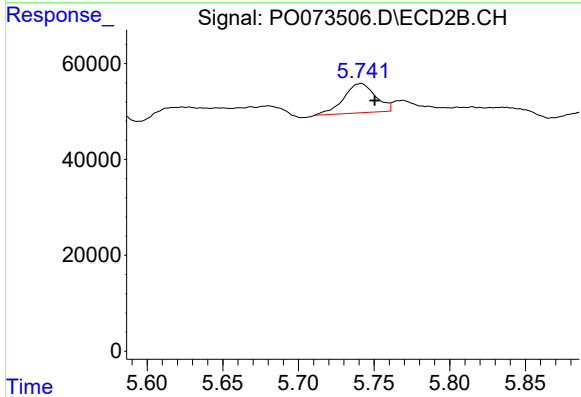
R.T.: 5.516 min  
 Delta R.T.: -0.008 min  
 Response: 90884  
 Conc: 76.47 ng/ml



#7 AR-1016-5

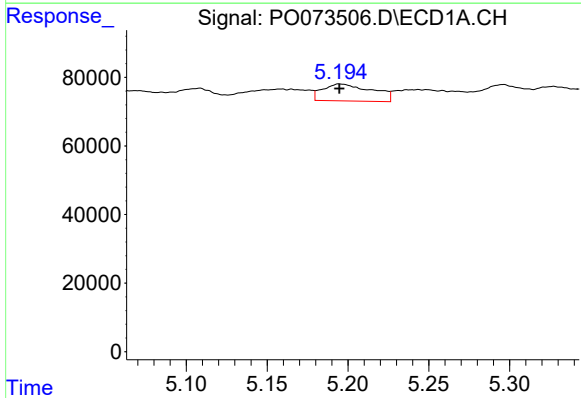
R.T.: 6.774 min  
 Delta R.T.: -0.007 min  
 Response: 224370  
 Conc: 99.79 ng/ml

Instrument :  
 ECD\_O  
 ClientSampled :



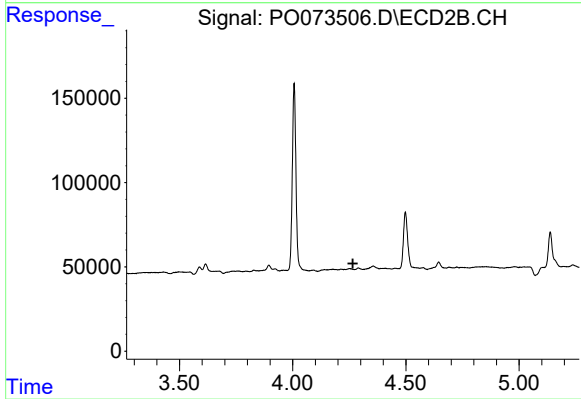
#7 AR-1016-5

R.T.: 5.741 min  
 Delta R.T.: -0.009 min  
 Response: 89680  
 Conc: 59.58 ng/ml



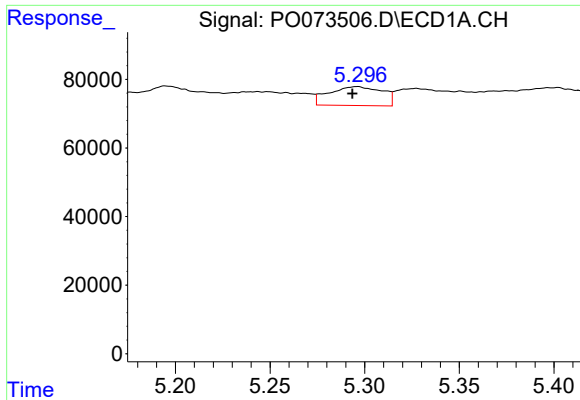
#8 AR-1221-1

R.T.: 5.195 min  
 Delta R.T.: 0.000 min  
 Response: 105535  
 Conc: 106.39 ng/ml



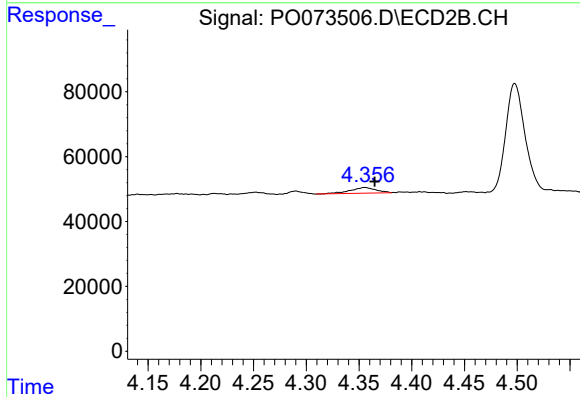
#8 AR-1221-1

R.T.: 0.000 min  
 Exp R.T. : 4.266 min  
 Response: 0  
 Conc: N.D.

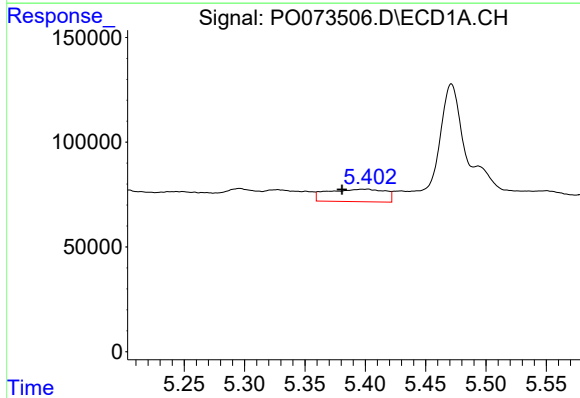


#9 AR-1221-2  
 R.T.: 5.296 min  
 Delta R.T.: 0.002 min  
 Response: 107649  
 Conc: 153.06 ng/ml

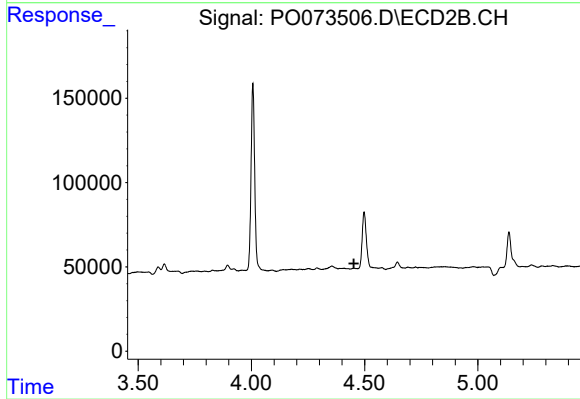
Instrument :  
 ECD\_O  
 ClientSampleId :



#9 AR-1221-2  
 R.T.: 4.356 min  
 Delta R.T.: -0.009 min  
 Response: 29831  
 Conc: 73.80 ng/ml

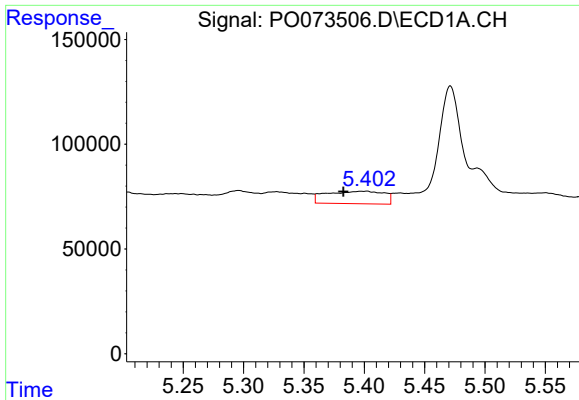


#10 AR-1221-3  
 R.T.: 5.402 min  
 Delta R.T.: 0.021 min  
 Response: 197918  
 Conc: 88.27 ng/ml



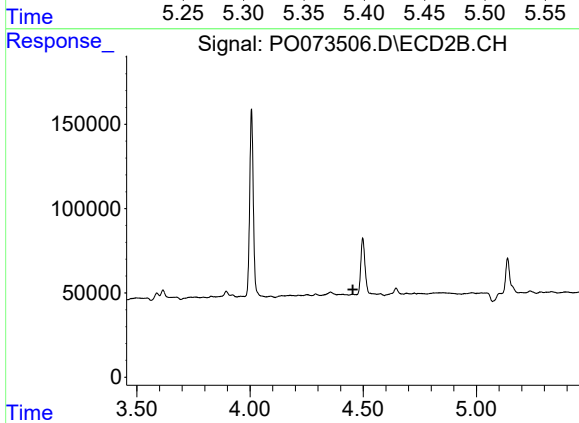
#10 AR-1221-3  
 R.T.: 0.000 min  
 Exp R.T. : 4.453 min  
 Response: 0  
 Conc: N.D.



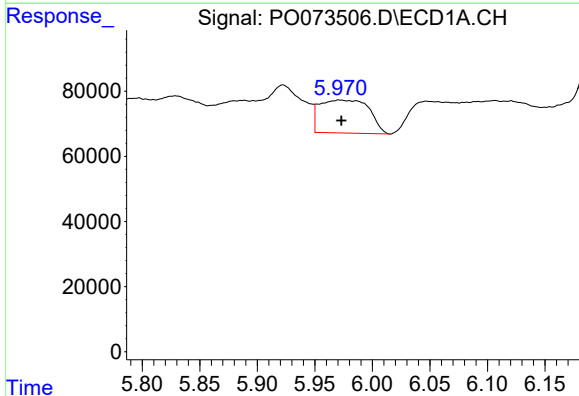


#11 AR-1232-1  
 R.T.: 5.402 min  
 Delta R.T.: 0.019 min  
 Response: 197918  
 Conc: 107.24 ng/ml

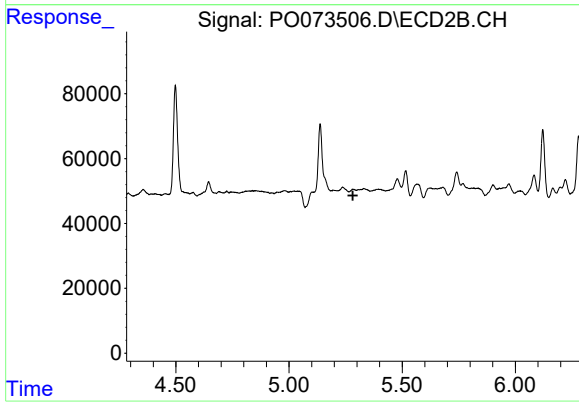
Instrument :  
 ECD\_O  
 ClientSampleId :



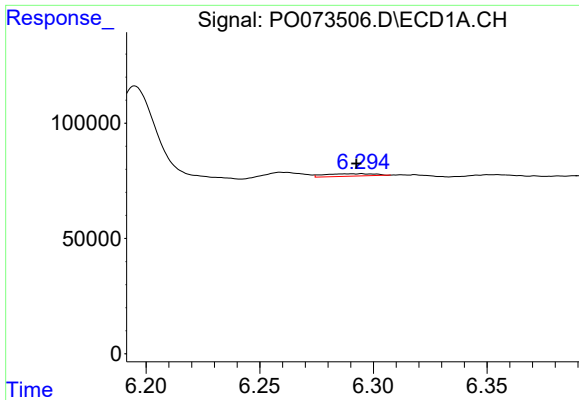
#11 AR-1232-1  
 R.T.: 0.000 min  
 Exp R.T. : 4.454 min  
 Response: 0  
 Conc: N.D.



#12 AR-1232-2  
 R.T.: 5.971 min  
 Delta R.T.: -0.002 min  
 Response: 302363  
 Conc: 317.73 ng/ml



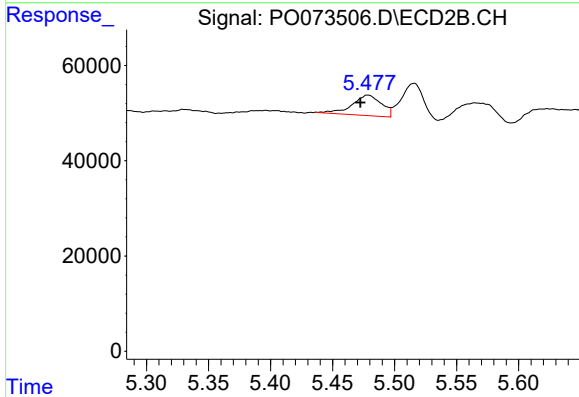
#12 AR-1232-2  
 R.T.: 0.000 min  
 Exp R.T. : 5.282 min  
 Response: 0  
 Conc: N.D.



#13 AR-1232-3

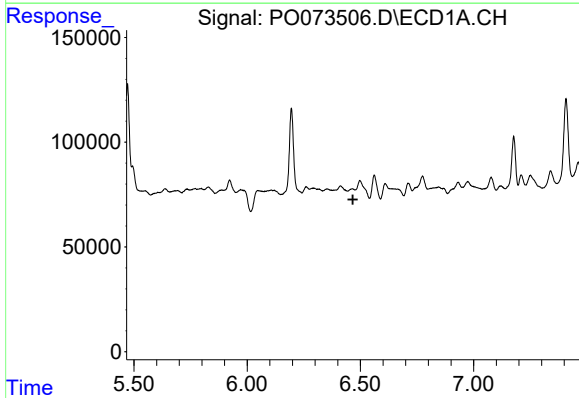
R.T.: 6.294 min  
 Delta R.T.: 0.002 min  
 Response: 16175  
 Conc: 8.27 ng/ml

Instrument :  
 ECD\_O  
 ClientSampled :



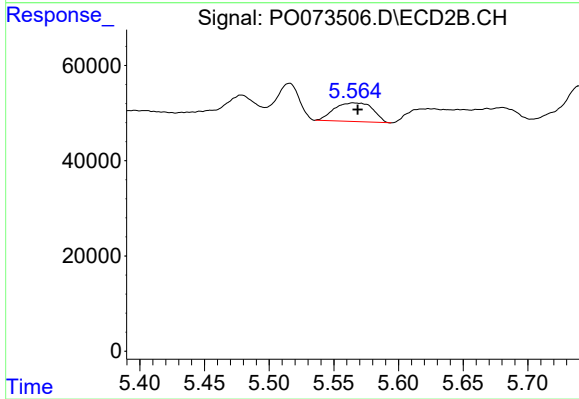
#13 AR-1232-3

R.T.: 5.479 min  
 Delta R.T.: 0.006 min  
 Response: 70933  
 Conc: 113.07 ng/ml



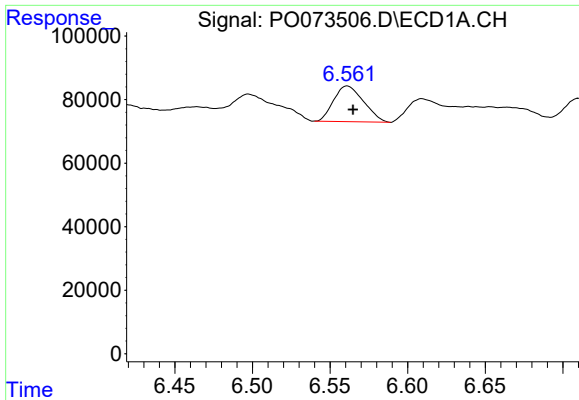
#14 AR-1232-4

R.T.: 0.000 min  
 Exp R.T. : 6.467 min  
 Response: 0  
 Conc: N.D.



#14 AR-1232-4

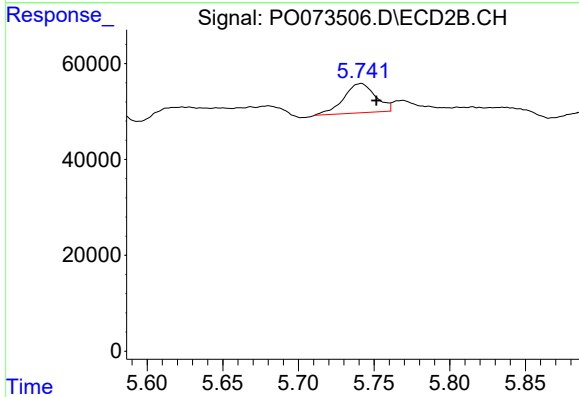
R.T.: 5.565 min  
 Delta R.T.: -0.003 min  
 Response: 81011  
 Conc: 150.26 ng/ml



#15 AR-1232-5

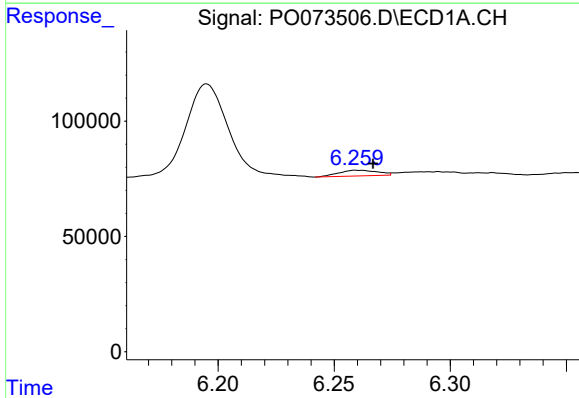
R.T.: 6.561 min  
 Delta R.T.: -0.004 min  
 Response: 151110  
 Conc: 224.45 ng/ml

Instrument :  
 ECD\_O  
 ClientSampleId :



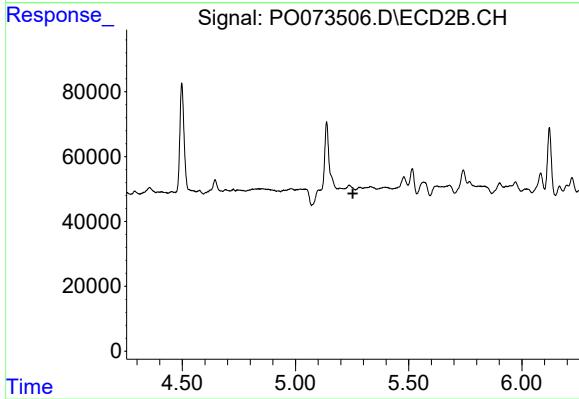
#15 AR-1232-5

R.T.: 5.741 min  
 Delta R.T.: -0.011 min  
 Response: 89680  
 Conc: 151.80 ng/ml



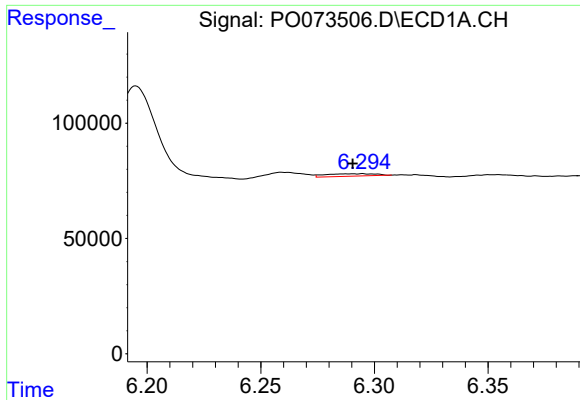
#16 AR-1242-1

R.T.: 6.260 min  
 Delta R.T.: -0.007 min  
 Response: 28507  
 Conc: 10.81 ng/ml



#16 AR-1242-1

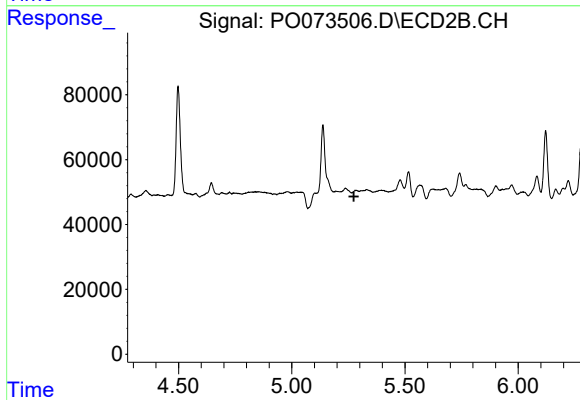
R.T.: 0.000 min  
 Exp R.T. : 5.254 min  
 Response: 0  
 Conc: N.D.



#17 AR-1242-2

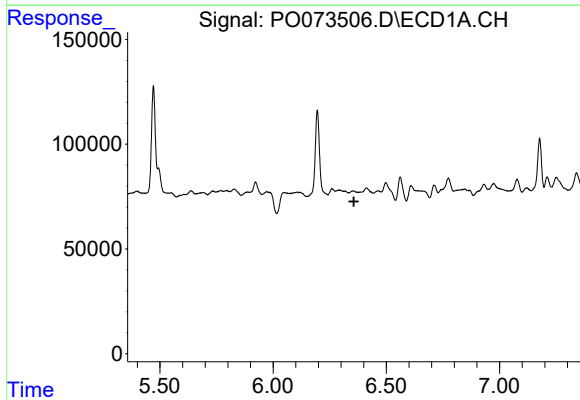
R.T.: 6.294 min  
 Delta R.T.: 0.004 min  
 Response: 16175  
 Conc: 4.42 ng/ml

Instrument :  
 ECD\_O  
 ClientSampled :



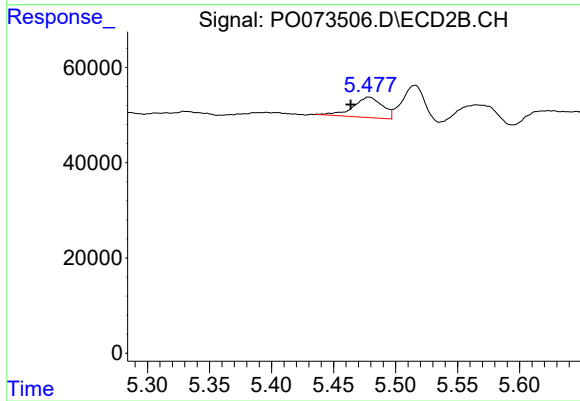
#17 AR-1242-2

R.T.: 0.000 min  
 Exp R.T. : 5.274 min  
 Response: 0  
 Conc: N.D.



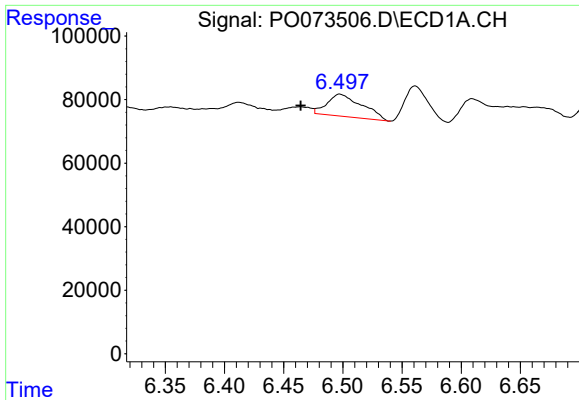
#18 AR-1242-3

R.T.: 0.000 min  
 Exp R.T. : 6.357 min  
 Response: 0  
 Conc: N.D.



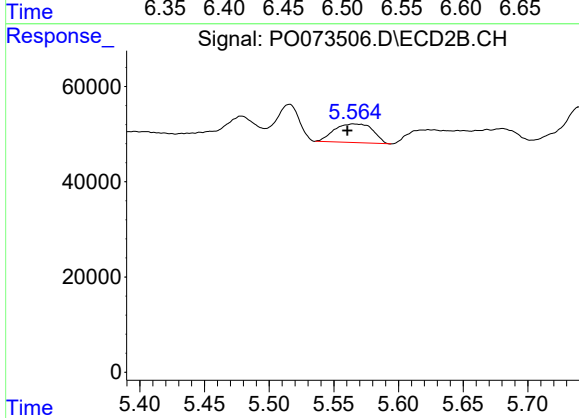
#18 AR-1242-3

R.T.: 5.479 min  
 Delta R.T.: 0.015 min  
 Response: 70933  
 Conc: 59.08 ng/ml

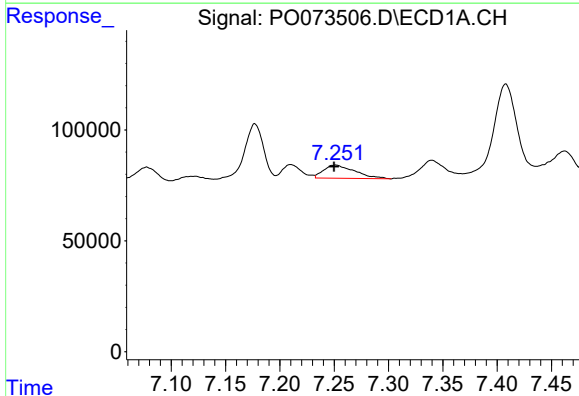


#19 AR-1242-4  
 R.T.: 6.497 min  
 Delta R.T.: 0.033 min  
 Response: 143588  
 Conc: 77.36 ng/ml

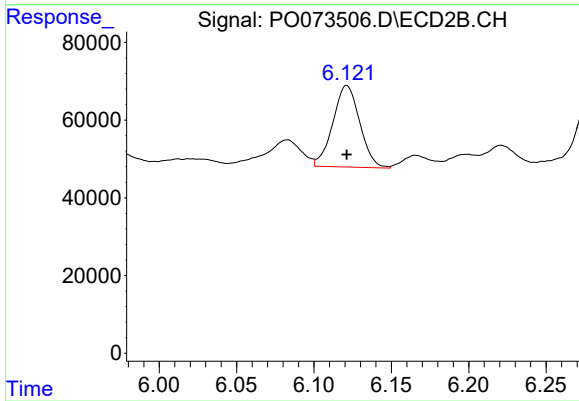
Instrument :  
 ECD\_O  
 ClientSampled :



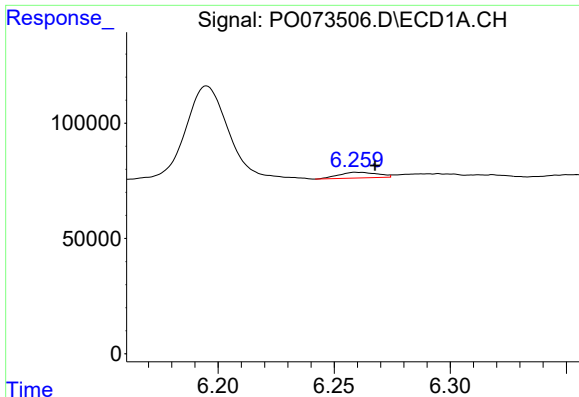
#19 AR-1242-4  
 R.T.: 5.565 min  
 Delta R.T.: 0.005 min  
 Response: 81011  
 Conc: 73.71 ng/ml



#20 AR-1242-5  
 R.T.: 7.251 min  
 Delta R.T.: 0.001 min  
 Response: 118805  
 Conc: 56.48 ng/ml



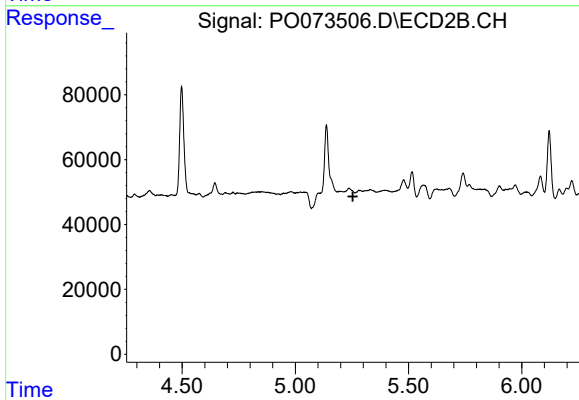
#20 AR-1242-5  
 R.T.: 6.121 min  
 Delta R.T.: 0.000 min  
 Response: 253640  
 Conc: 163.81 ng/ml



#21 AR-1248-1

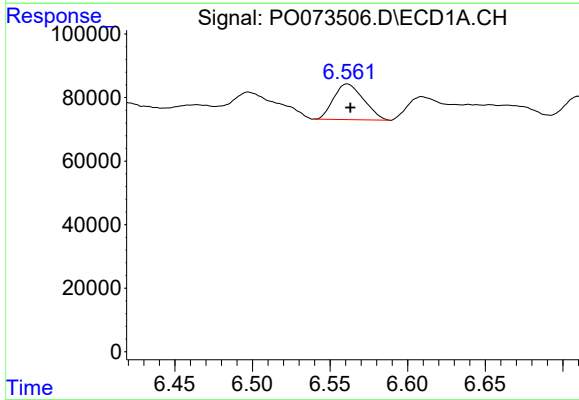
R.T.: 6.260 min  
 Delta R.T.: -0.008 min  
 Response: 28507  
 Conc: 14.26 ng/ml

Instrument :  
 ECD\_O  
 ClientSampleId :



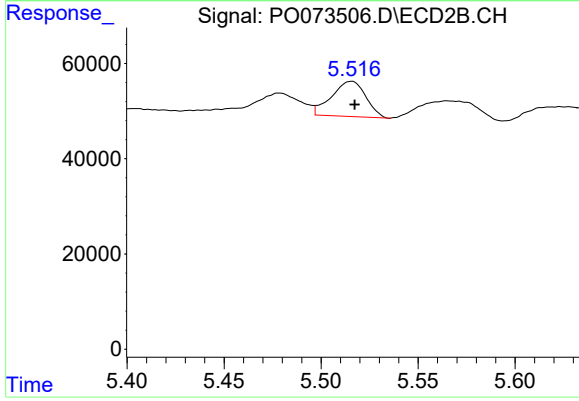
#21 AR-1248-1

R.T.: 0.000 min  
 Exp R.T. : 5.255 min  
 Response: 0  
 Conc: N.D.



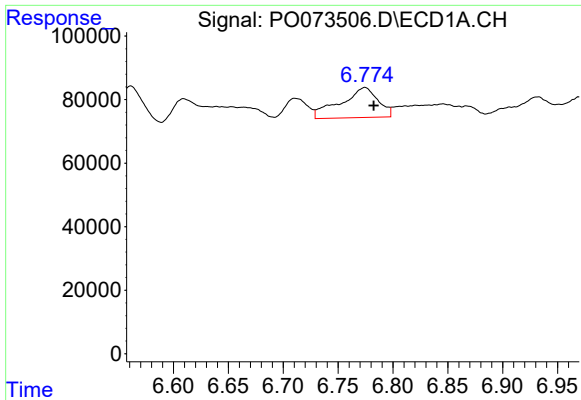
#22 AR-1248-2

R.T.: 6.561 min  
 Delta R.T.: -0.002 min  
 Response: 151110  
 Conc: 58.45 ng/ml



#22 AR-1248-2

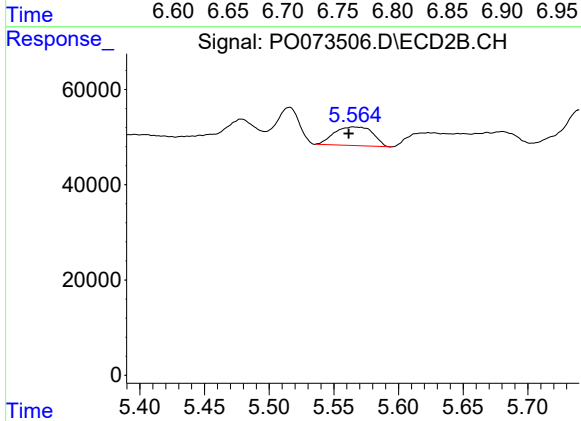
R.T.: 5.516 min  
 Delta R.T.: -0.002 min  
 Response: 90884  
 Conc: 53.74 ng/ml



#23 AR-1248-3

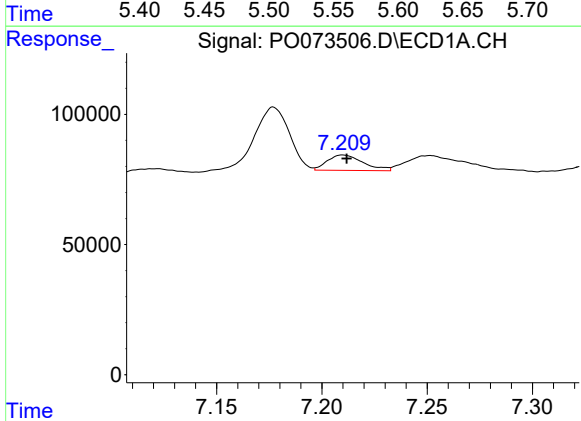
R.T.: 6.774 min  
 Delta R.T.: -0.008 min  
 Response: 224370  
 Conc: 73.21 ng/ml

Instrument :  
 ECD\_O  
 ClientSampleId :



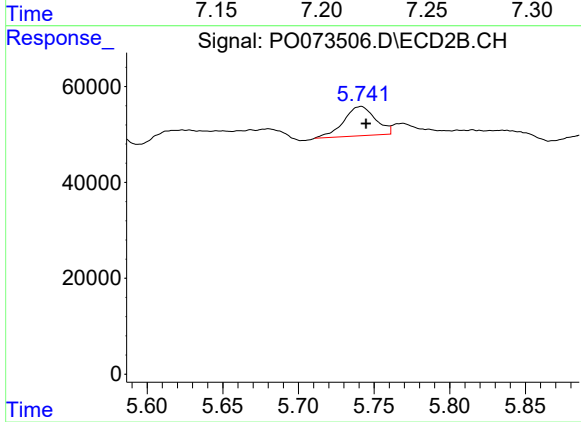
#23 AR-1248-3

R.T.: 5.565 min  
 Delta R.T.: 0.004 min  
 Response: 81011  
 Conc: 47.47 ng/ml



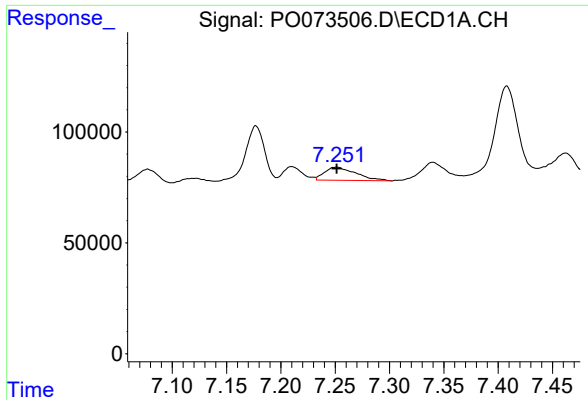
#24 AR-1248-4

R.T.: 7.210 min  
 Delta R.T.: -0.002 min  
 Response: 70430  
 Conc: 18.88 ng/ml



#24 AR-1248-4

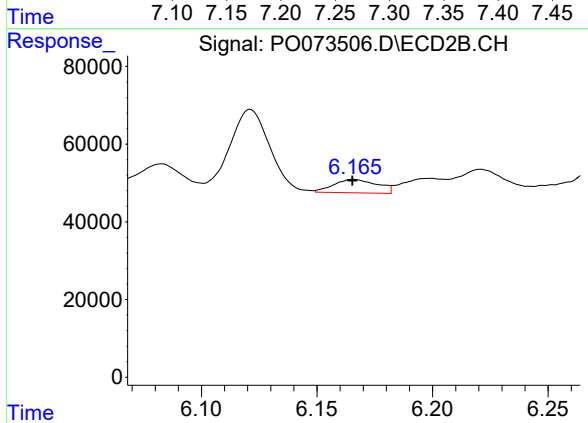
R.T.: 5.741 min  
 Delta R.T.: -0.004 min  
 Response: 89680  
 Conc: 43.63 ng/ml



#25 AR-1248-5

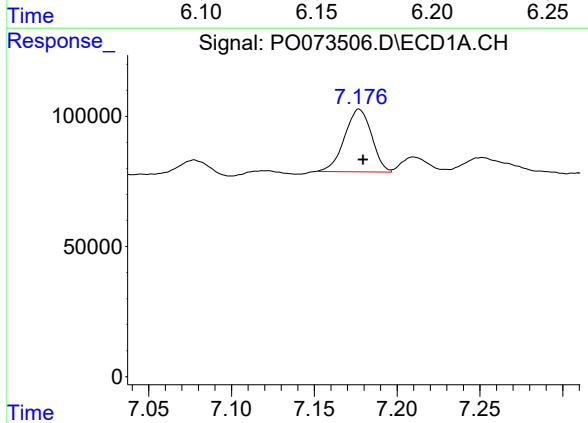
R.T.: 7.251 min  
 Delta R.T.: 0.000 min  
 Response: 118805  
 Conc: 33.20 ng/ml

Instrument :  
 ECD\_O  
 ClientSampled :



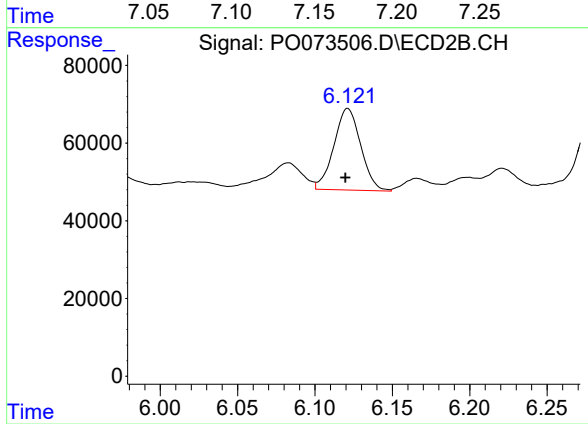
#25 AR-1248-5

R.T.: 6.166 min  
 Delta R.T.: 0.000 min  
 Response: 45098  
 Conc: 20.31 ng/ml



#26 AR-1254-1

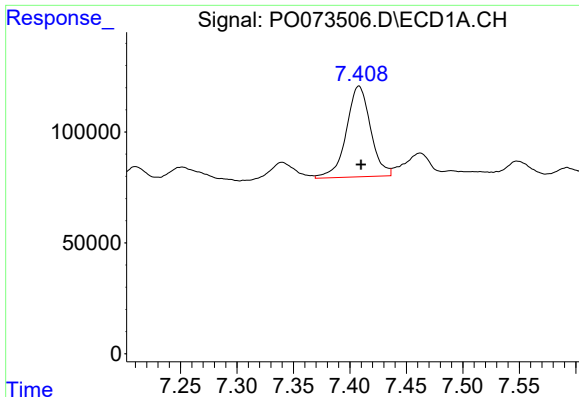
R.T.: 7.177 min  
 Delta R.T.: -0.002 min  
 Response: 274834  
 Conc: 79.47 ng/ml



#26 AR-1254-1

R.T.: 6.121 min  
 Delta R.T.: 0.001 min  
 Response: 253640  
 Conc: 81.46 ng/ml

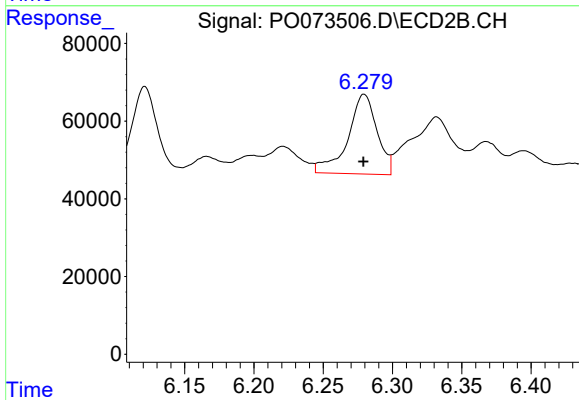




#27 AR-1254-2

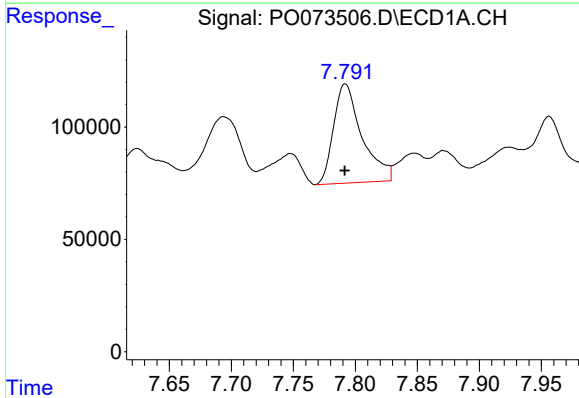
R.T.: 7.408 min  
 Delta R.T.: -0.002 min  
 Response: 610178  
 Conc: 112.00 ng/ml

Instrument :  
 ECD\_O  
 ClientSampleId :



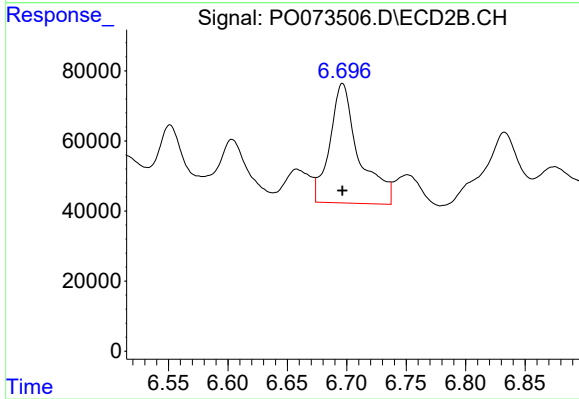
#27 AR-1254-2

R.T.: 6.280 min  
 Delta R.T.: 0.000 min  
 Response: 302535  
 Conc: 110.82 ng/ml



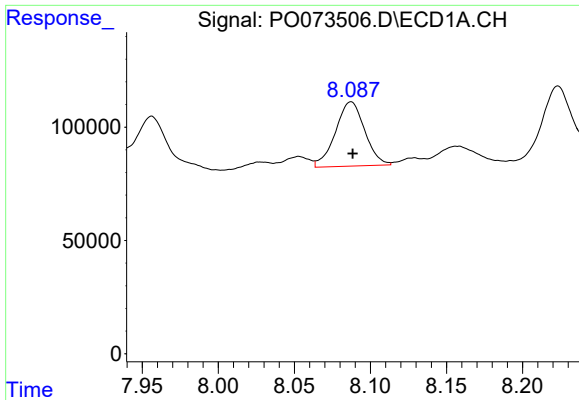
#28 AR-1254-3

R.T.: 7.792 min  
 Delta R.T.: 0.000 min  
 Response: 703376  
 Conc: 124.11 ng/ml



#28 AR-1254-3

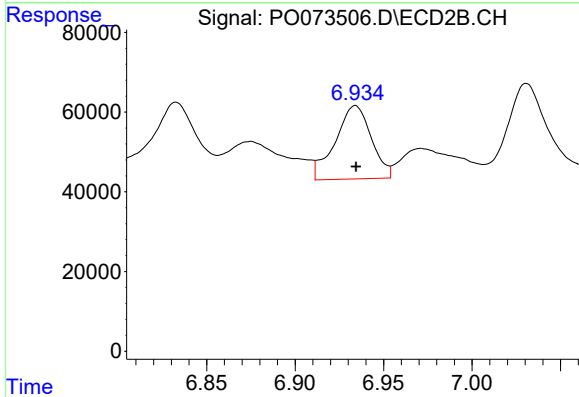
R.T.: 6.696 min  
 Delta R.T.: 0.000 min  
 Response: 580077  
 Conc: 137.16 ng/ml



#29 AR-1254-4

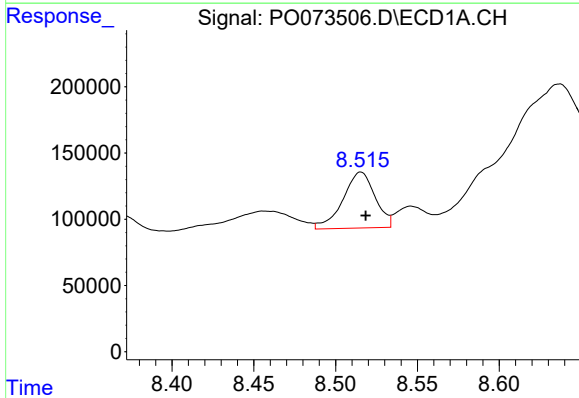
R.T.: 8.087 min  
 Delta R.T.: -0.001 min  
 Response: 380842  
 Conc: 78.72 ng/ml

Instrument :  
 ECD\_O  
 ClientSampled :



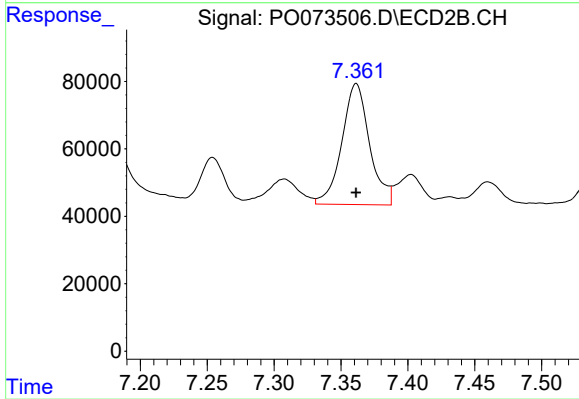
#29 AR-1254-4

R.T.: 6.934 min  
 Delta R.T.: 0.000 min  
 Response: 261102  
 Conc: 90.44 ng/ml



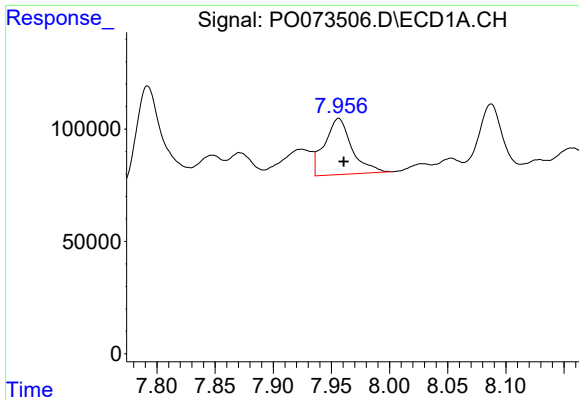
#30 AR-1254-5

R.T.: 8.515 min  
 Delta R.T.: -0.003 min  
 Response: 580165  
 Conc: 121.87 ng/ml



#30 AR-1254-5

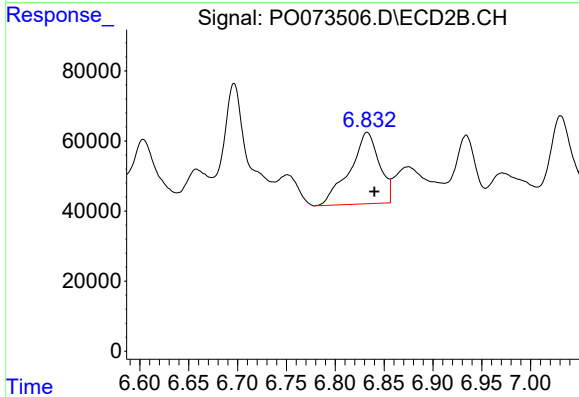
R.T.: 7.361 min  
 Delta R.T.: 0.000 min  
 Response: 519608  
 Conc: 140.69 ng/ml



#31 AR-1260-1

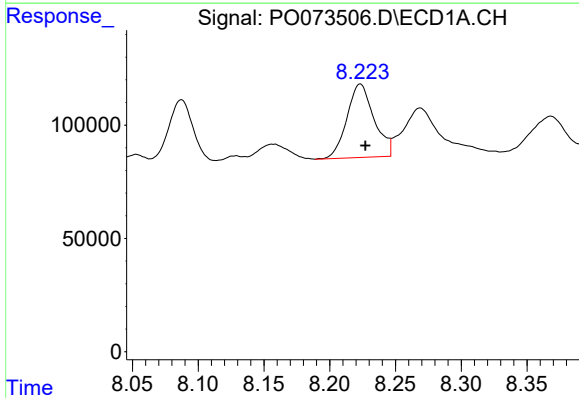
R.T.: 7.956 min  
 Delta R.T.: -0.004 min  
 Response: 407373  
 Conc: 100.95 ng/ml

Instrument :  
 ECD\_O  
 ClientSampleId :



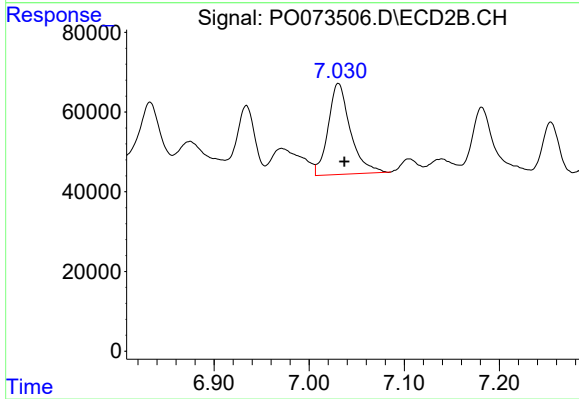
#31 AR-1260-1

R.T.: 6.833 min  
 Delta R.T.: -0.008 min  
 Response: 429417  
 Conc: 159.83 ng/ml



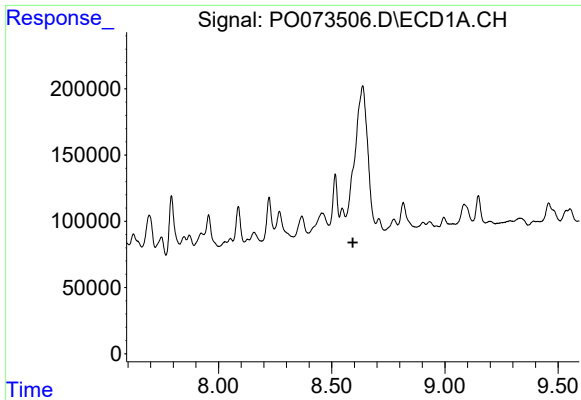
#32 AR-1260-2

R.T.: 8.223 min  
 Delta R.T.: -0.004 min  
 Response: 466367  
 Conc: 84.86 ng/ml



#32 AR-1260-2

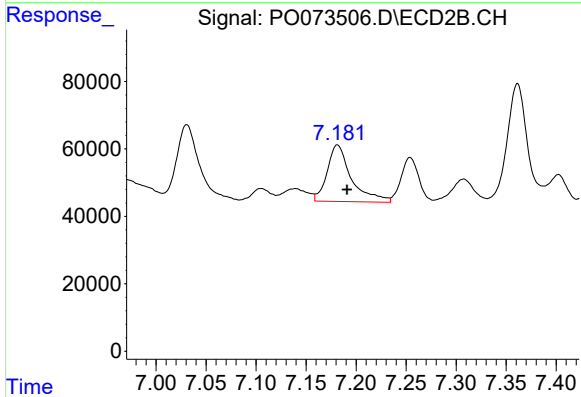
R.T.: 7.031 min  
 Delta R.T.: -0.006 min  
 Response: 367330  
 Conc: 110.13 ng/ml



#33 AR-1260-3

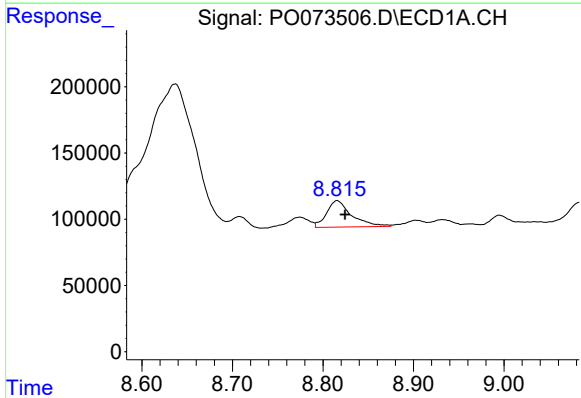
R.T.: 0.000 min  
 Exp R.T.: 8.594 min  
 Response: 0  
 Conc: N.D.

Instrument :  
 ECD\_O  
 ClientSampled :



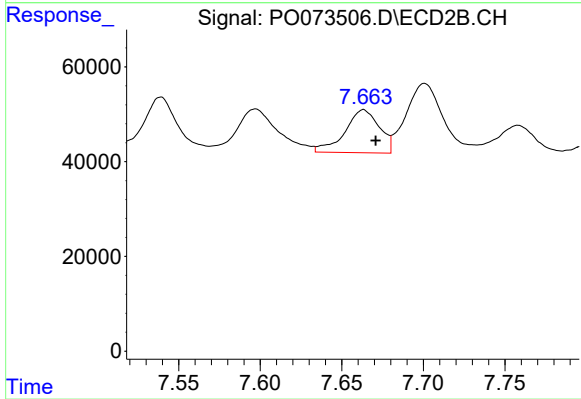
#33 AR-1260-3

R.T.: 7.181 min  
 Delta R.T.: -0.010 min  
 Response: 282065  
 Conc: 91.31 ng/ml



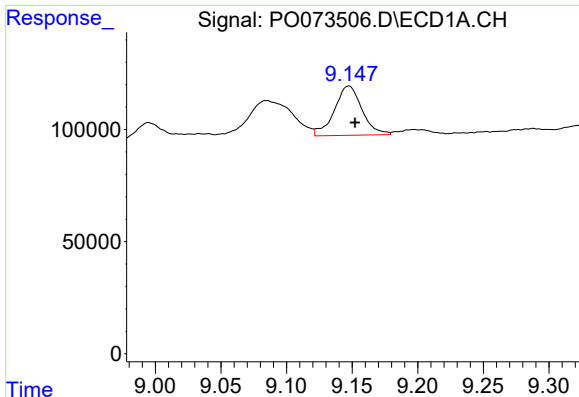
#34 AR-1260-4

R.T.: 8.816 min  
 Delta R.T.: -0.009 min  
 Response: 382965  
 Conc: 88.73 ng/ml



#34 AR-1260-4

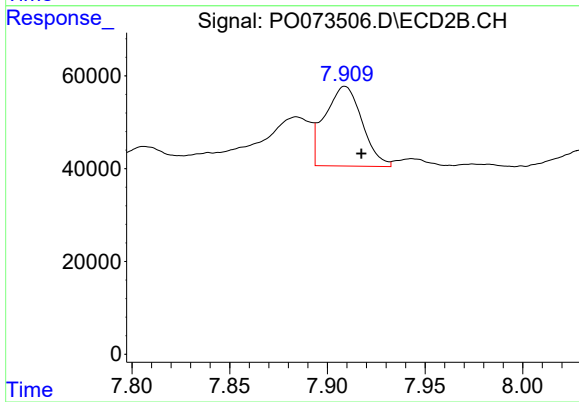
R.T.: 7.663 min  
 Delta R.T.: -0.008 min  
 Response: 133878  
 Conc: 54.40 ng/ml



#35 AR-1260-5

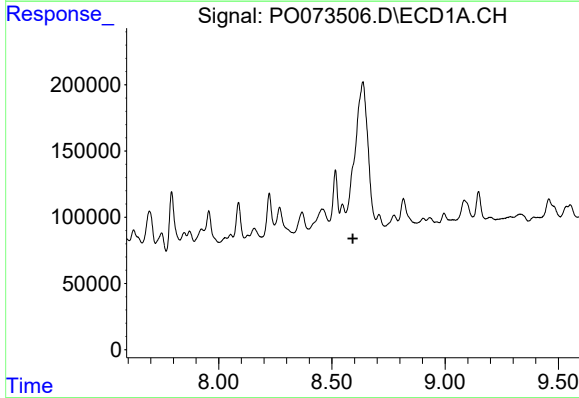
R.T.: 9.147 min  
 Delta R.T.: -0.005 min  
 Response: 323260  
 Conc: 32.74 ng/ml

Instrument :  
 ECD\_O  
 ClientSampled :



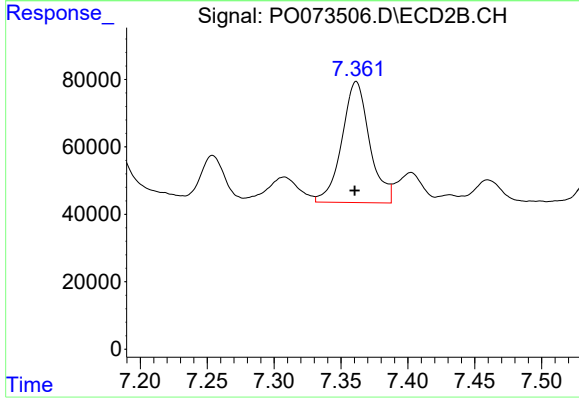
#35 AR-1260-5

R.T.: 7.909 min  
 Delta R.T.: -0.008 min  
 Response: 228073  
 Conc: 36.82 ng/ml



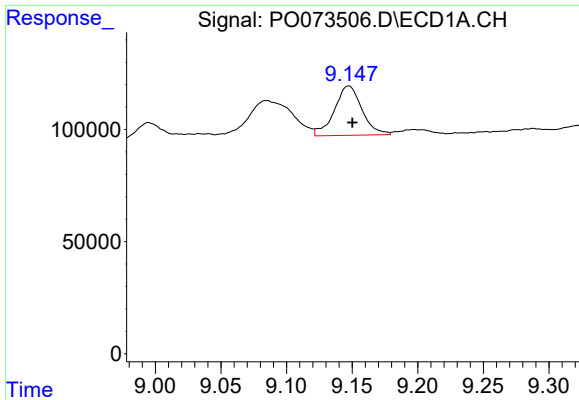
#36 AR-1262-1

R.T.: 0.000 min  
 Exp R.T. : 8.592 min  
 Response: 0  
 Conc: N.D.



#36 AR-1262-1

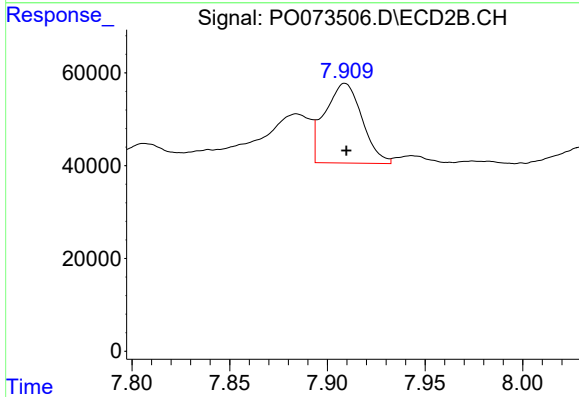
R.T.: 7.361 min  
 Delta R.T.: 0.001 min  
 Response: 519608  
 Conc: 268.12 ng/ml



#37 AR-1262-2

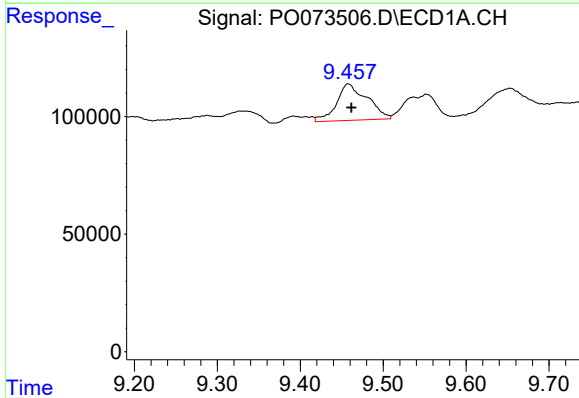
R.T.: 9.147 min  
 Delta R.T.: -0.003 min  
 Response: 323260  
 Conc: 29.88 ng/ml

Instrument :  
 ECD\_O  
 ClientSampled :



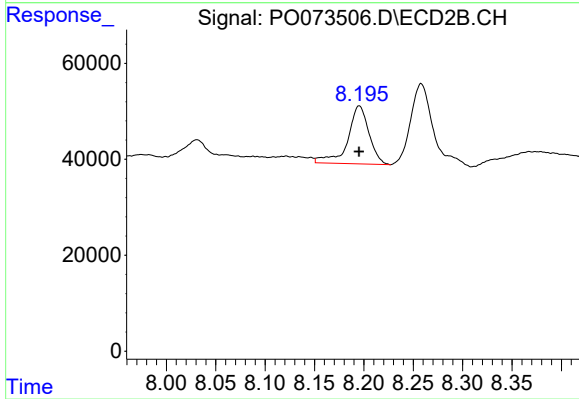
#37 AR-1262-2

R.T.: 7.909 min  
 Delta R.T.: 0.000 min  
 Response: 228073  
 Conc: 34.79 ng/ml



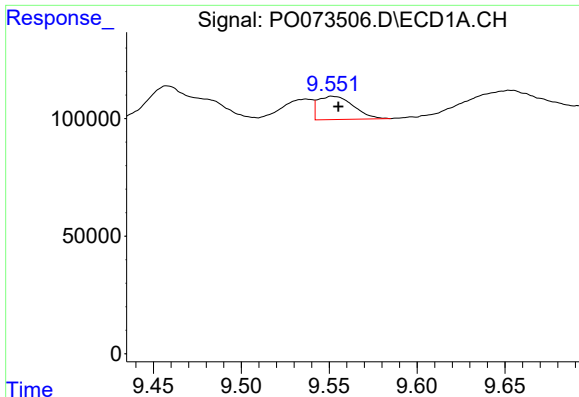
#38 AR-1262-3

R.T.: 9.458 min  
 Delta R.T.: -0.004 min  
 Response: 398106  
 Conc: 54.24 ng/ml



#38 AR-1262-3

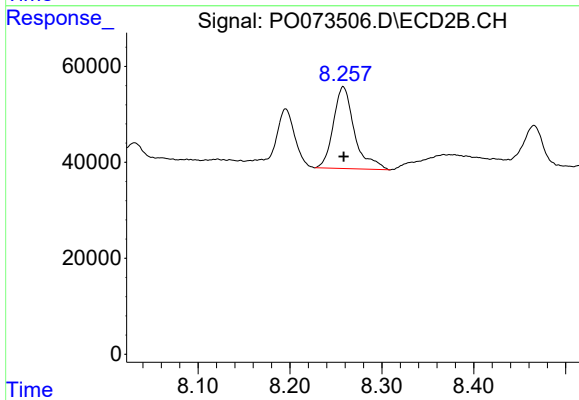
R.T.: 8.195 min  
 Delta R.T.: 0.000 min  
 Response: 180657  
 Conc: 66.96 ng/ml



#39 AR-1262-4

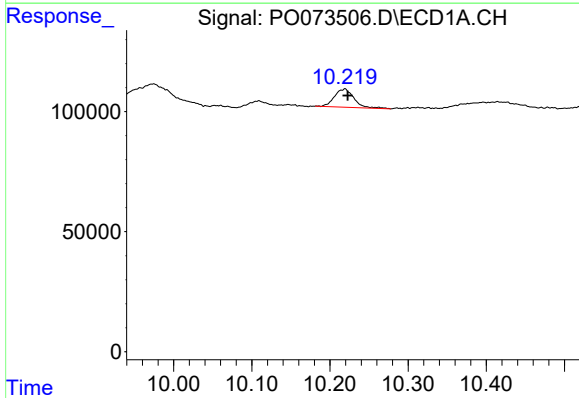
R.T.: 9.552 min  
 Delta R.T.: -0.003 min  
 Response: 139227  
 Conc: 25.30 ng/ml

Instrument :  
 ECD\_O  
 ClientSampled :



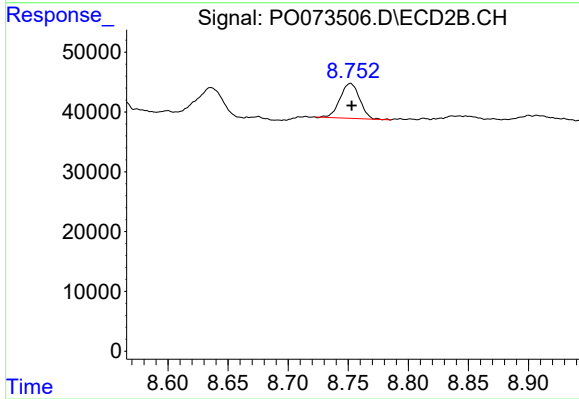
#39 AR-1262-4

R.T.: 8.258 min  
 Delta R.T.: 0.000 min  
 Response: 272026  
 Conc: 56.97 ng/ml



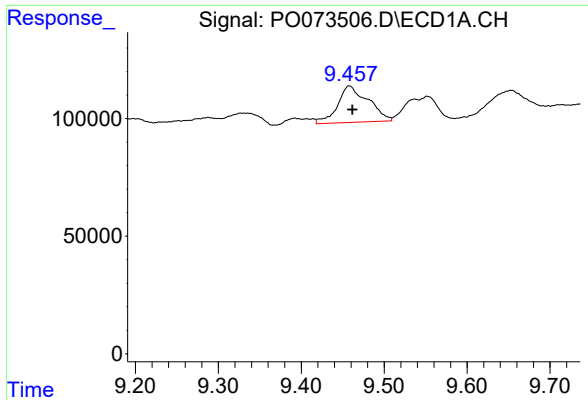
#40 AR-1262-5

R.T.: 10.219 min  
 Delta R.T.: -0.003 min  
 Response: 131994  
 Conc: 33.91 ng/ml



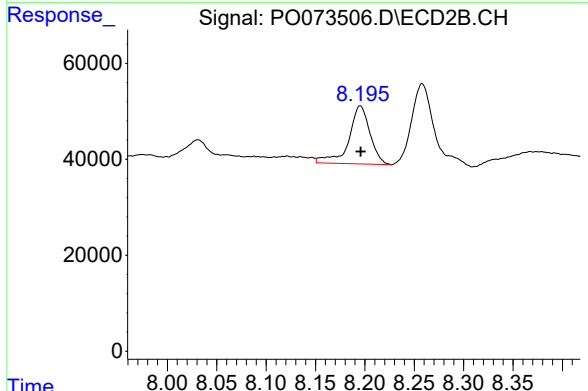
#40 AR-1262-5

R.T.: 8.752 min  
 Delta R.T.: -0.001 min  
 Response: 66264  
 Conc: 28.97 ng/ml

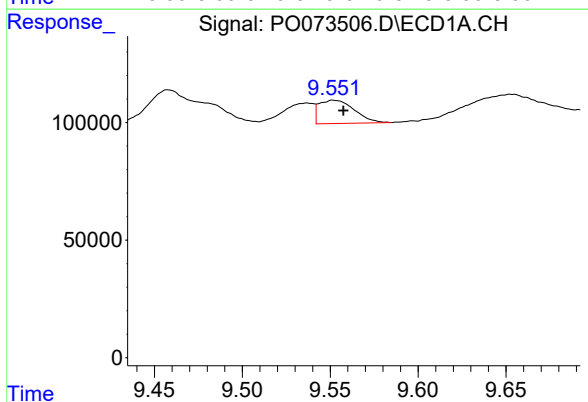


#41 AR-1268-1  
 R.T.: 9.458 min  
 Delta R.T.: -0.004 min  
 Response: 398106  
 Conc: 28.50 ng/ml

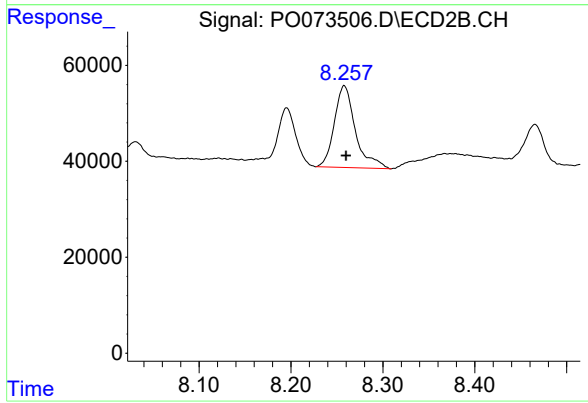
Instrument :  
 ECD\_O  
 ClientSampleId :



#41 AR-1268-1  
 R.T.: 8.195 min  
 Delta R.T.: 0.000 min  
 Response: 180657  
 Conc: 22.18 ng/ml

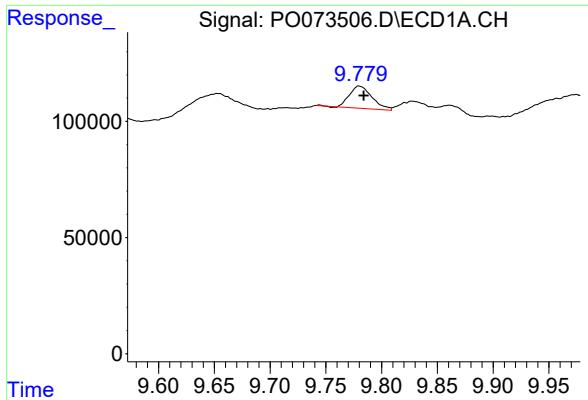


#42 AR-1268-2  
 R.T.: 9.552 min  
 Delta R.T.: -0.005 min  
 Response: 139227  
 Conc: 11.46 ng/ml



#42 AR-1268-2  
 R.T.: 8.258 min  
 Delta R.T.: -0.002 min  
 Response: 272026  
 Conc: 37.24 ng/ml

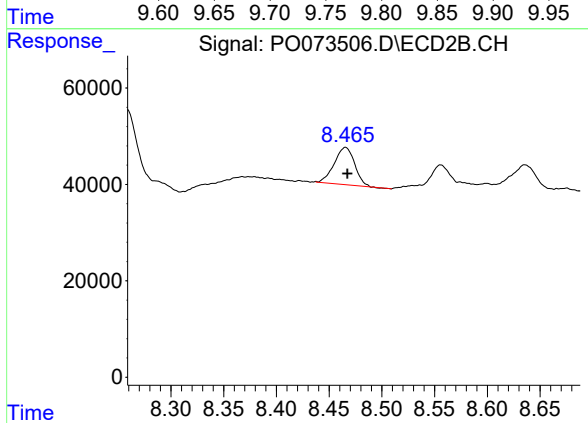




#43 AR-1268-3

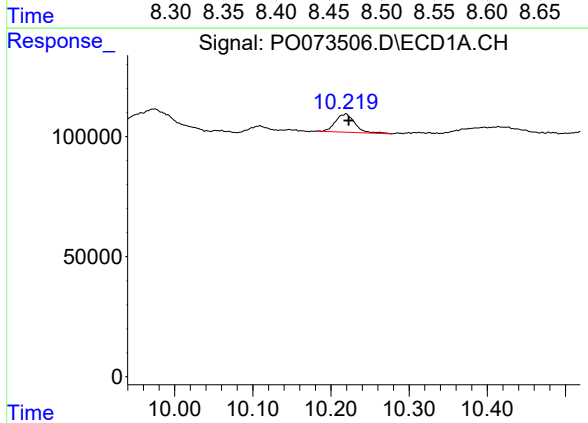
R.T.: 9.780 min  
 Delta R.T.: -0.004 min  
 Response: 134969  
 Conc: 12.81 ng/ml

Instrument :  
 ECD\_O  
 ClientSampleId :



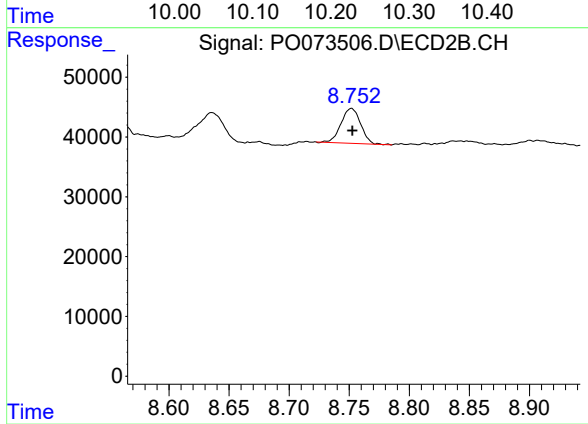
#43 AR-1268-3

R.T.: 8.466 min  
 Delta R.T.: -0.002 min  
 Response: 104245  
 Conc: 16.67 ng/ml



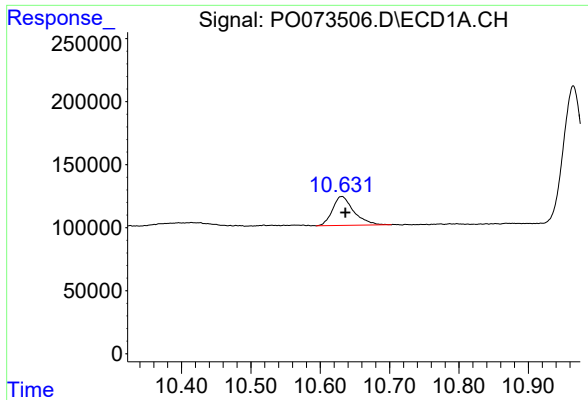
#44 AR-1268-4

R.T.: 10.219 min  
 Delta R.T.: -0.003 min  
 Response: 131994  
 Conc: 29.26 ng/ml



#44 AR-1268-4

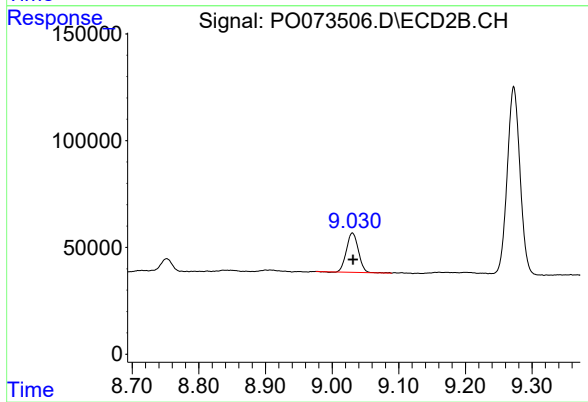
R.T.: 8.752 min  
 Delta R.T.: 0.000 min  
 Response: 66264  
 Conc: 24.74 ng/ml



#45 AR-1268-5

R.T.: 10.631 min  
Delta R.T.: -0.005 min  
Response: 487687  
Conc: 15.32 ng/ml

Instrument :  
ECD\_O  
ClientSampleId :



#45 AR-1268-5

R.T.: 9.031 min  
Delta R.T.: 0.000 min  
Response: 229646  
Conc: 12.59 ng/ml