

Data Path : Z:\pestpcbsrv\HPCHEM1\ECD_0\Data\PO112420\
 Data File : PO073512.D
 Signal(s) : Signal #1: ECD1A.CH Signal #2: ECD2B.CH
 Acq On : 24 Nov 2020 14:22
 Operator : DD\AJ
 Sample : L4840-01 10X
 Misc :
 ALS Vial : 14 Sample Multiplier: 1

Instrument :
 ECD_O
 ClientSampled :

Integration File signal 1: autoint1.e
 Integration File signal 2: autoint2.e
 Quant Time: Nov 25 10:31:39 2020
 Quant Method : Z:\pestpcbsrv\HPCHEM1\ECD_0\methods\PO112320.M
 Quant Title : GC EXTRACTABLES
 QLast Update : Wed Nov 25 10:04:26 2020
 Response via : Initial Calibration
 Integrator: ChemStation 6890 Scale Mode: Small noise peaks clipped

Volume Inj. : 2 µl
 Signal #1 Phase : ZB-MR1 Signal #2 Phase: ZB-MR2
 Signal #1 Info : 30Mx0.32mmx 0.50µ Signal #2 Info : 30M x 0.32mm x 0.25µm

Compound	RT#1	RT#2	Resp#1	Resp#2	ng/ml	ng/ml
System Monitoring Compounds						
1) SA Tetrachlo...	4.941	4.006	172485	104176	2.062	2.125
2) SA Decachlor...	10.964	9.272	164931	104834	2.000	2.286
Target Compounds						
3) L1 AR-1016-1	6.264	5.254	1196103	692380	363.225	339.866
4) L1 AR-1016-2	6.288	5.275	1380057	772218	299.786	276.112
5) L1 AR-1016-3	6.354	5.464	1188947	539935	434.204	363.096
6) L1 AR-1016-4	6.462	5.517	904211	557910	396.161	469.439
7) L1 AR-1016-5	6.778	5.744	1557914	938216	692.914	623.274
9) L2 AR-1221-2	5.294	4.360	44580	22827	63.384	56.469
10) L2 AR-1221-3	5.379	4.448	243274	114875	108.503	86.495
11) L3 AR-1232-1	5.379	4.448	243274	114875	131.822	101.000
12) L3 AR-1232-2	5.969	5.275	488243	772218	513.062	646.104 #
13) L3 AR-1232-3	6.288	5.464	1380057	539935	705.504	860.705
14) L3 AR-1232-4	6.462	5.561	904211	663048	914.536	1229.843 #
15) L3 AR-1232-5	6.560	5.744	904097	938216	1342.883	1588.105
16) L4 AR-1242-1	6.264	5.254	1196103	692380	453.506	423.338
17) L4 AR-1242-2	6.288	5.275	1380057	772218	377.535	341.414
18) L4 AR-1242-3	6.354	5.464	1188947	539935	539.132	449.717
19) L4 AR-1242-4	6.462	5.561	904211	663048	487.143	603.265
20) L4 AR-1242-5	7.247	6.121	2129482	1756397	1012.420	1134.346
21) L5 AR-1248-1	6.264	5.254	1196103	692380	598.319	552.103
22) L5 AR-1248-2	6.560	5.517	904097	557910	349.719	329.902
23) L5 AR-1248-3	6.778	5.561	1557914	663048	508.364	388.547
24) L5 AR-1248-4	7.208	5.744	2360642	938216	632.832	456.399 #
25) L5 AR-1248-5	7.247	6.164	2129482	1209820	595.168	544.835
26) L6 AR-1254-1	7.177	6.121	1584109	1756397	458.055	564.067
27) L6 AR-1254-2	7.413	6.279	1804616	360010	331.246	131.872 #
28) L6 AR-1254-3	7.790	6.696	488304	436518	86.162	103.215
29) L6 AR-1254-4	8.086	6.935	357945	227373	73.984	78.756
30) L6 AR-1254-5	8.515	7.360	559700	388600	117.575	105.221
31) L7 AR-1260-1	7.957	6.835	269984	331981	66.907	123.561 #
32) L7 AR-1260-2	8.223	7.029	449822	281789	81.847	84.482
33) L7 AR-1260-3	8.588	7.182	276807	255987	62.379	82.866 #
34) L7 AR-1260-4	8.819	7.663	361297	180736	83.708	73.446
35) L7 AR-1260-5	9.147	7.909	580670	399894	58.803	64.550
36) L8 AR-1262-1	8.588	7.360	276807	388600	44.336	200.522 #
37) L8 AR-1262-2	9.147	7.909	580670	399894	53.680	60.993
38) L8 AR-1262-3	9.480f	8.194	342465	72330	46.657	26.807 #
39) L8 AR-1262-4	9.533f	8.256	189688	253292	34.470	53.049 #
40) L8 AR-1262-5	10.218	8.752	100061	62262	25.707	27.223
41) L9 AR-1268-1	9.480f	8.194	342465	72330	24.517	8.879 #
42) L9 AR-1268-2	9.533f	8.256	189688	253292	15.614	34.680 #

Data Path : Z:\pestpcbsrv\HPCHEM1\ECD_0\Data\PO112420\
 Data File : PO073512.D
 Signal(s) : Signal #1: ECD1A.CH Signal #2: ECD2B.CH
 Acq On : 24 Nov 2020 14:22
 Operator : DD\AJ
 Sample : L4840-01 10X
 Misc :
 ALS Vial : 14 Sample Multiplier: 1

Instrument :
 ECD_0
 ClientSampleId :

Integration File signal 1: autoint1.e
 Integration File signal 2: autoint2.e
 Quant Time: Nov 25 10:31:39 2020
 Quant Method : Z:\pestpcbsrv\HPCHEM1\ECD_0\methods\PO112320.M
 Quant Title : GC EXTRACTABLES
 QLast Update : Wed Nov 25 10:04:26 2020
 Response via : Initial Calibration
 Integrator: ChemStation 6890 Scale Mode: Small noise peaks clipped

Volume Inj. : 2 µl
 Signal #1 Phase : ZB-MR1 Signal #2 Phase: ZB-MR2
 Signal #1 Info : 30Mx0.32mmx 0.50µ Signal #2 Info : 30M x 0.32mm x 0.25µm

	Compound	RT#1	RT#2	Resp#1	Resp#2	ng/ml	ng/ml
44)	L9 AR-1268-4	10.218	8.752	100061	62262	22.180	23.244
45)	L9 AR-1268-5	10.646	0.000	59101	0	1.857	N.D. #

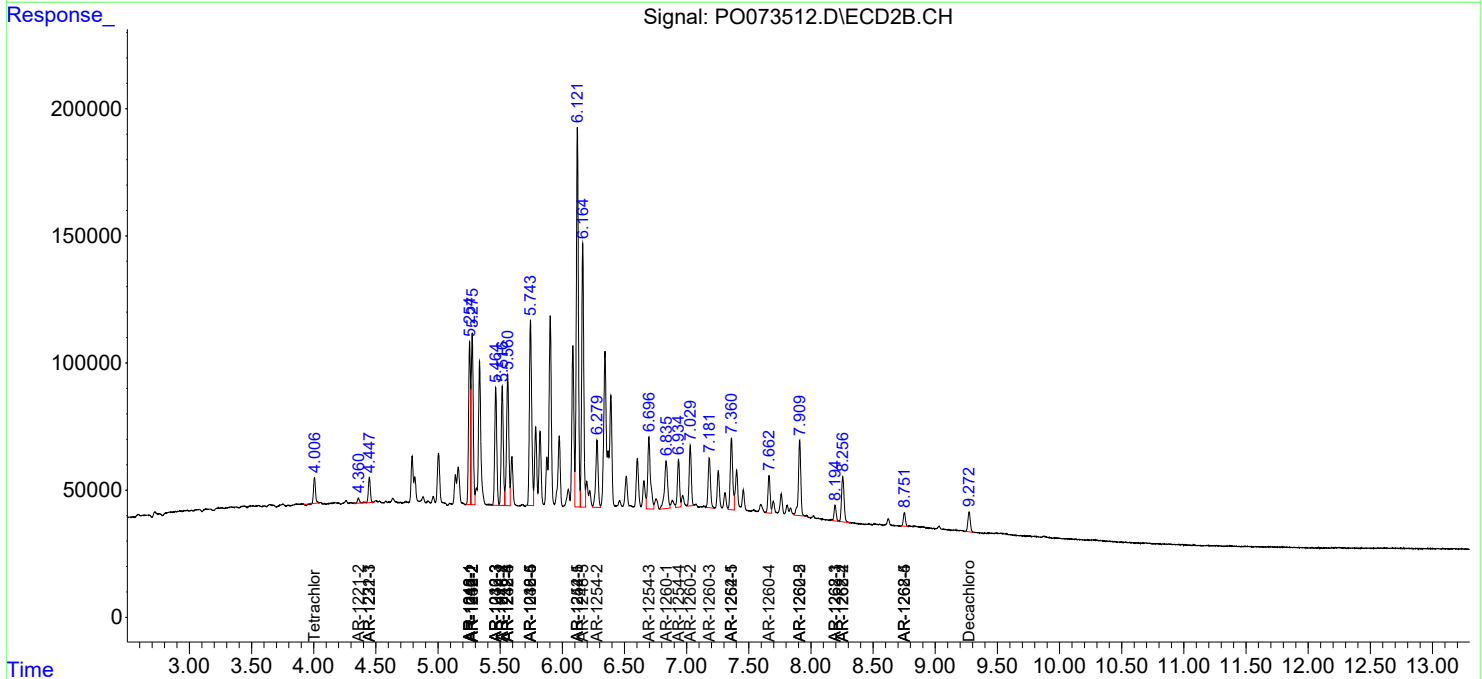
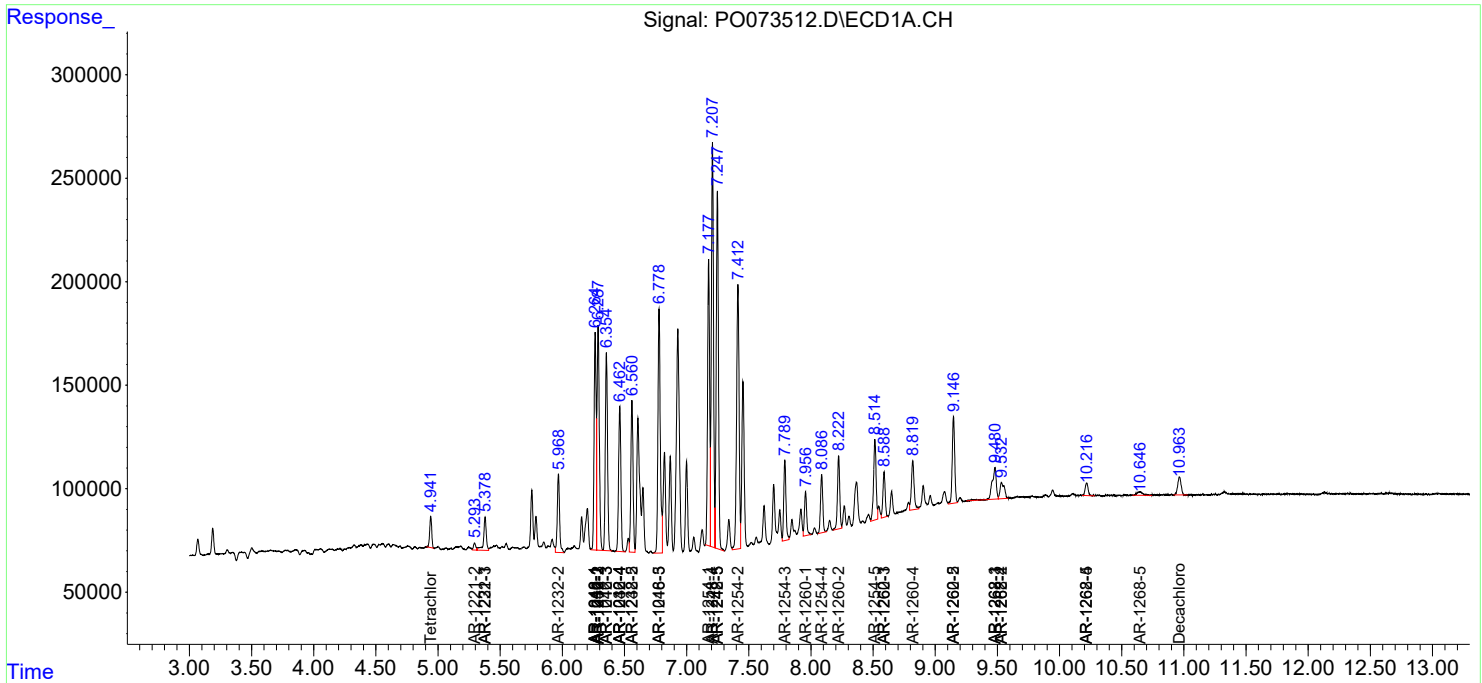
(f)=RT Delta > 1/2 Window (#)=Amounts differ by > 25% (m)=manual int.

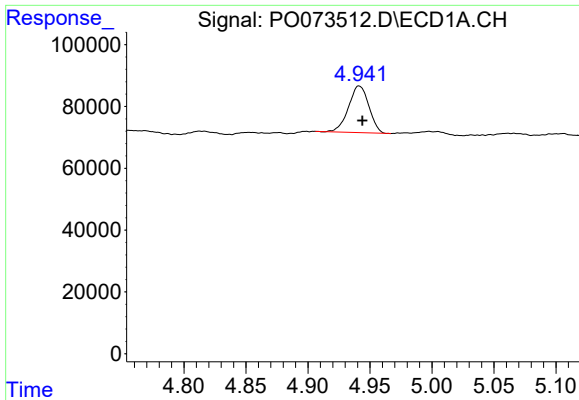
Data Path : Z:\pestpcbsrv\HPCHEM1\ECD_0\Data\PO112420\
 Data File : PO073512.D
 Signal(s) : Signal #1: ECD1A.CH Signal #2: ECD2B.CH
 Acq On : 24 Nov 2020 14:22
 Operator : DD\AJ
 Sample : L4840-01 10X
 Misc :
 ALS Vial : 14 Sample Multiplier: 1

Instrument :
 ECD_O
 ClientSampled :

Integration File signal 1: autoint1.e
 Integration File signal 2: autoint2.e
 Quant Time: Nov 25 10:31:39 2020
 Quant Method : Z:\pestpcbsrv\HPCHEM1\ECD_0\methods\PO112320.M
 Quant Title : GC EXTRACTABLES
 QLast Update : Wed Nov 25 10:04:26 2020
 Response via : Initial Calibration
 Integrator: ChemStation 6890 Scale Mode: Small noise peaks clipped

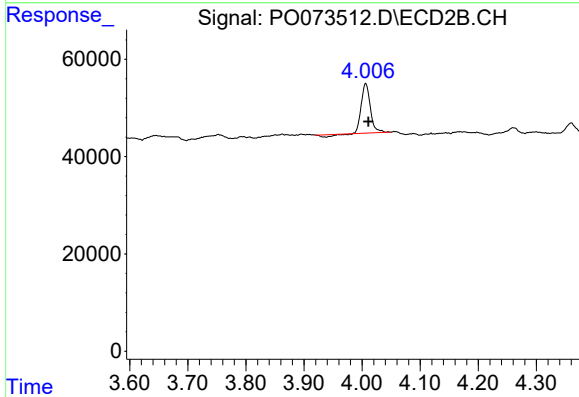
Volume Inj. : 2 µl
 Signal #1 Phase : ZB-MR1 Signal #2 Phase: ZB-MR2
 Signal #1 Info : 30Mx0.32mmx 0.50µ Signal #2 Info : 30M x 0.32mm x 0.25µm



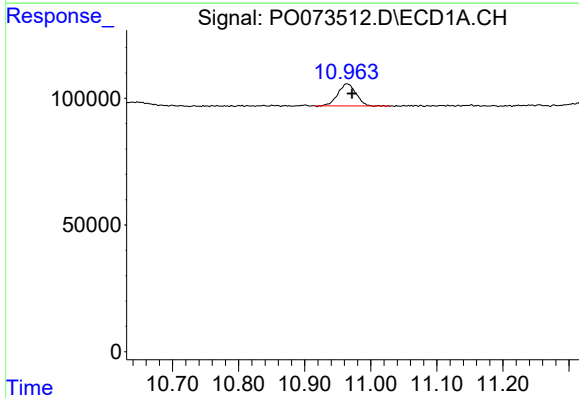


#1 Tetrachloro-m-xylene
 R.T.: 4.941 min
 Delta R.T.: -0.003 min
 Response: 172485
 Conc: 2.06 ng/ml

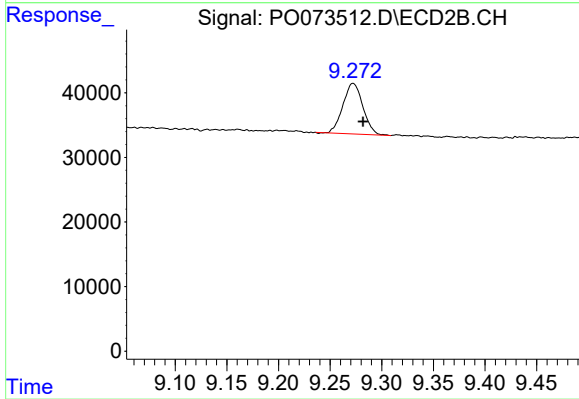
Instrument :
 ECD_O
 ClientSampleId :



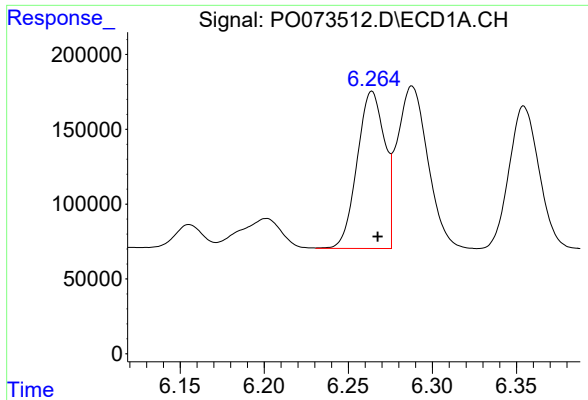
#1 Tetrachloro-m-xylene
 R.T.: 4.006 min
 Delta R.T.: -0.005 min
 Response: 104176
 Conc: 2.12 ng/ml



#2 Decachlorobiphenyl
 R.T.: 10.964 min
 Delta R.T.: -0.008 min
 Response: 164931
 Conc: 2.00 ng/ml



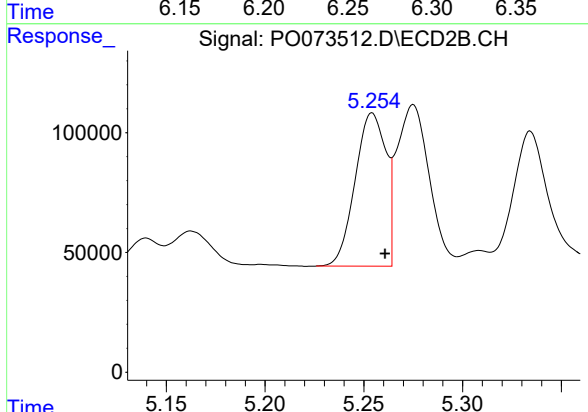
#2 Decachlorobiphenyl
 R.T.: 9.272 min
 Delta R.T.: -0.010 min
 Response: 104834
 Conc: 2.29 ng/ml



#3 AR-1016-1

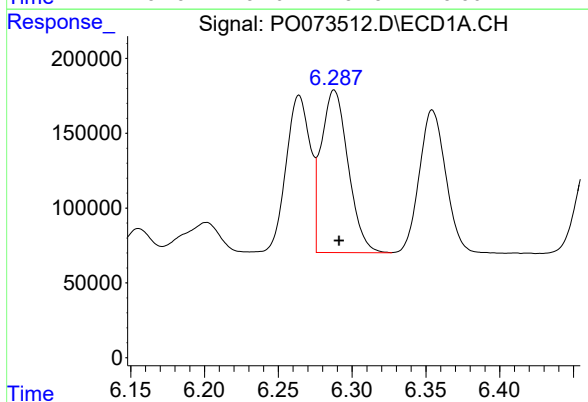
R.T.: 6.264 min
 Delta R.T.: -0.003 min
 Response: 1196103
 Conc: 363.23 ng/ml

Instrument :
 ECD_O
 ClientSampled :



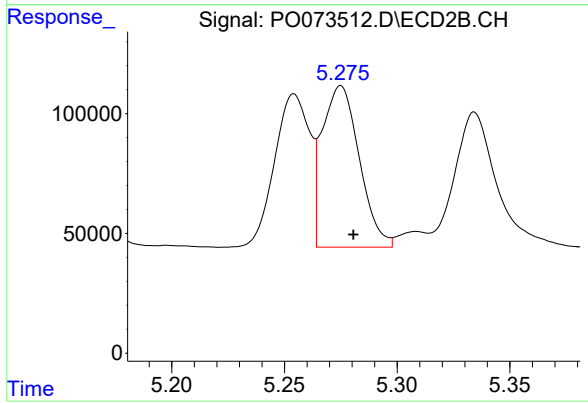
#3 AR-1016-1

R.T.: 5.254 min
 Delta R.T.: -0.006 min
 Response: 692380
 Conc: 339.87 ng/ml



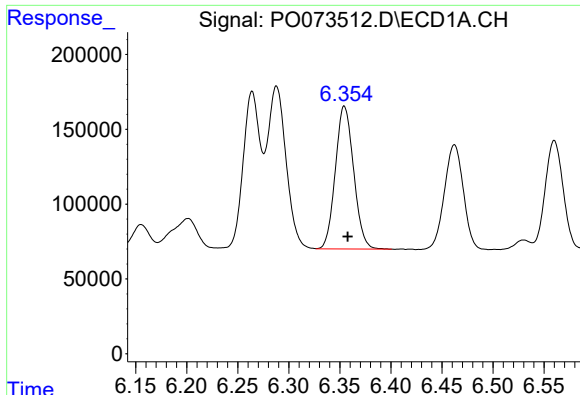
#4 AR-1016-2

R.T.: 6.288 min
 Delta R.T.: -0.003 min
 Response: 1380057
 Conc: 299.79 ng/ml



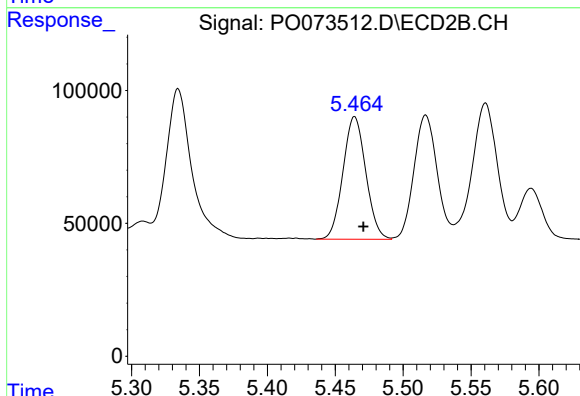
#4 AR-1016-2

R.T.: 5.275 min
 Delta R.T.: -0.006 min
 Response: 772218
 Conc: 276.11 ng/ml

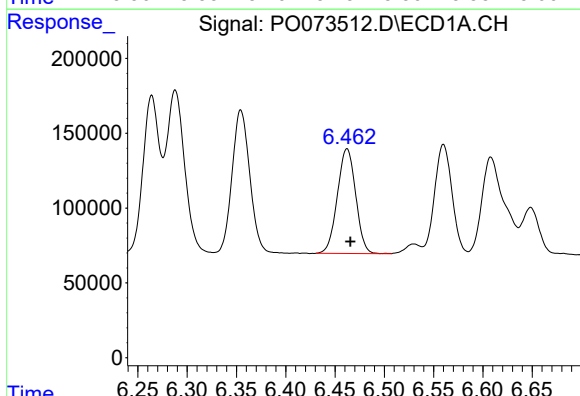


#5 AR-1016-3
 R.T.: 6.354 min
 Delta R.T.: -0.003 min
 Response: 1188947
 Conc: 434.20 ng/ml

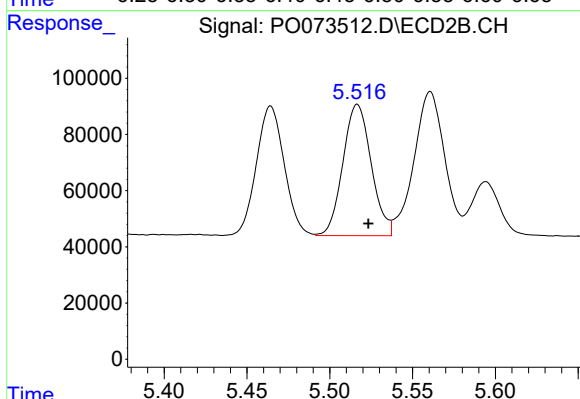
Instrument :
 ECD_O
 ClientSampleId :



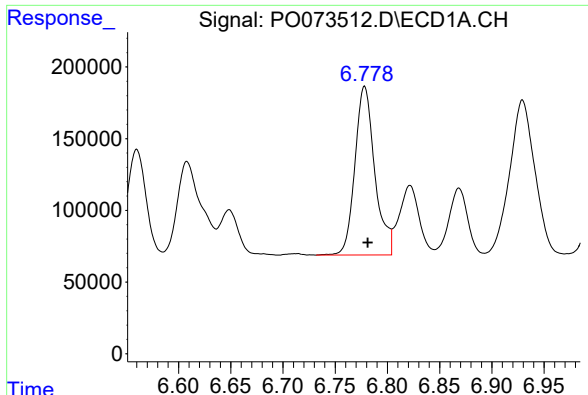
#5 AR-1016-3
 R.T.: 5.464 min
 Delta R.T.: -0.006 min
 Response: 539935
 Conc: 363.10 ng/ml



#6 AR-1016-4
 R.T.: 6.462 min
 Delta R.T.: -0.003 min
 Response: 904211
 Conc: 396.16 ng/ml



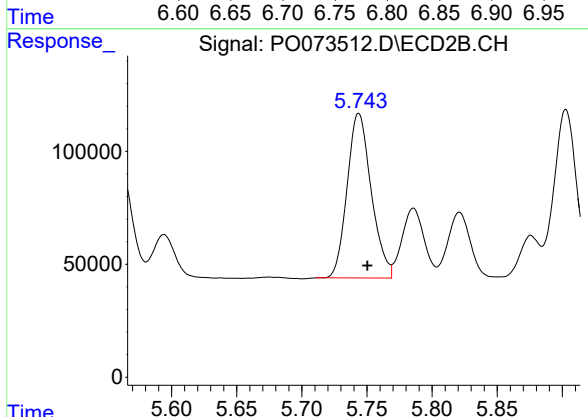
#6 AR-1016-4
 R.T.: 5.517 min
 Delta R.T.: -0.007 min
 Response: 557910
 Conc: 469.44 ng/ml



#7 AR-1016-5

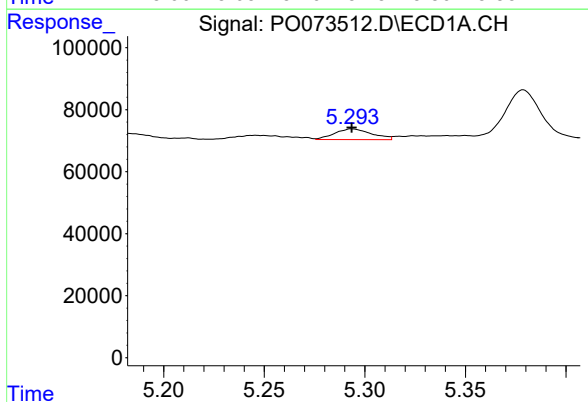
R.T.: 6.778 min
 Delta R.T.: -0.003 min
 Response: 1557914
 Conc: 692.91 ng/ml

Instrument :
 ECD_O
 ClientSampleId :



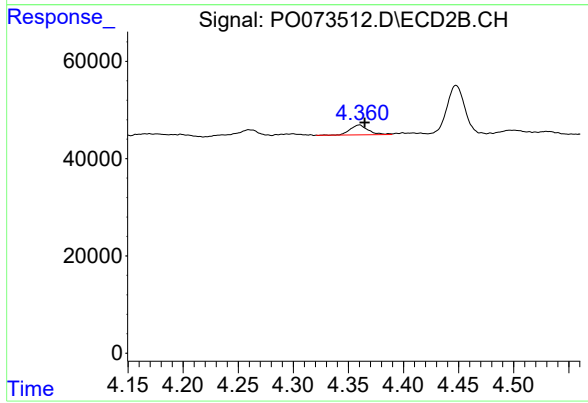
#7 AR-1016-5

R.T.: 5.744 min
 Delta R.T.: -0.007 min
 Response: 938216
 Conc: 623.27 ng/ml



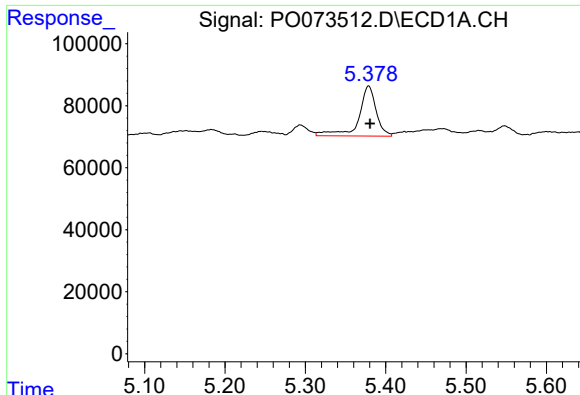
#9 AR-1221-2

R.T.: 5.294 min
 Delta R.T.: 0.000 min
 Response: 44580
 Conc: 63.38 ng/ml



#9 AR-1221-2

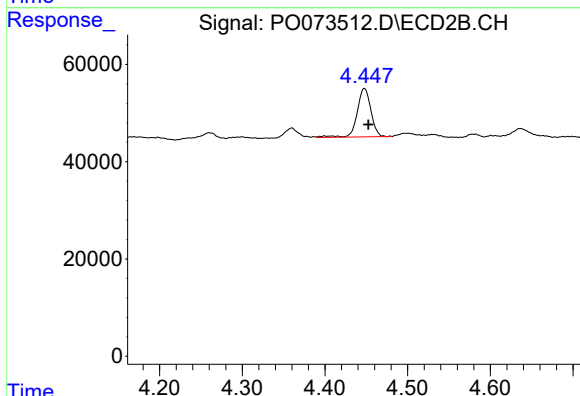
R.T.: 4.360 min
 Delta R.T.: -0.005 min
 Response: 22827
 Conc: 56.47 ng/ml



#10 AR-1221-3

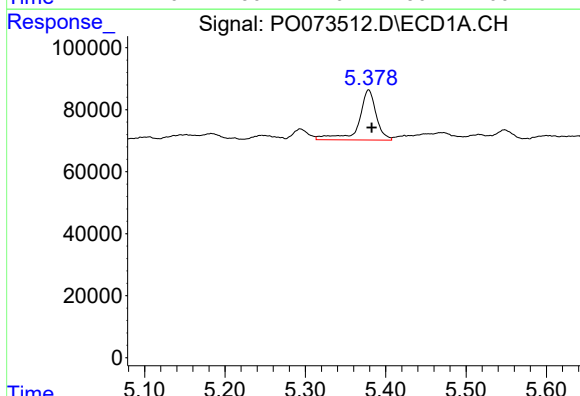
R.T.: 5.379 min
 Delta R.T.: -0.002 min
 Response: 243274
 Conc: 108.50 ng/ml

Instrument :
 ECD_O
 ClientSampled :



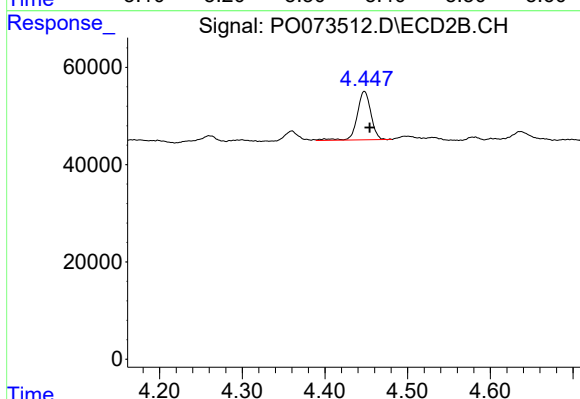
#10 AR-1221-3

R.T.: 4.448 min
 Delta R.T.: -0.005 min
 Response: 114875
 Conc: 86.50 ng/ml



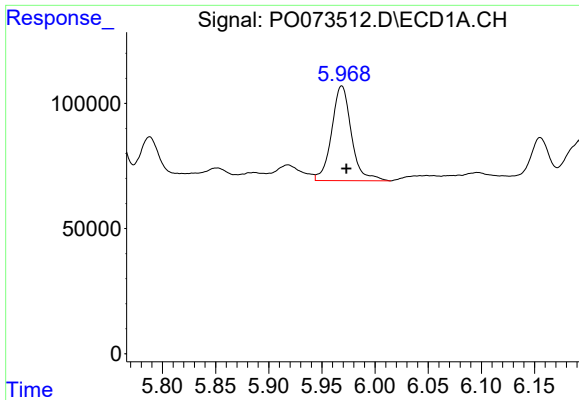
#11 AR-1232-1

R.T.: 5.379 min
 Delta R.T.: -0.004 min
 Response: 243274
 Conc: 131.82 ng/ml



#11 AR-1232-1

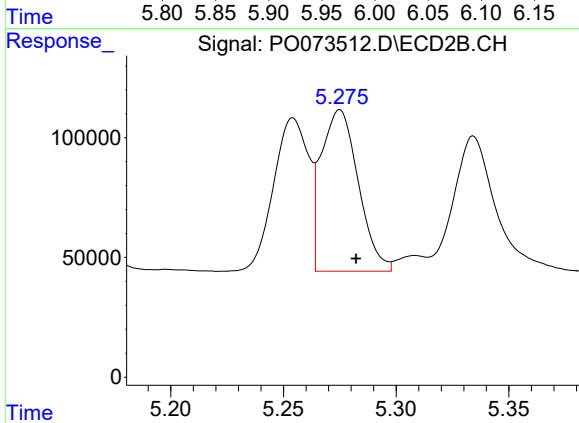
R.T.: 4.448 min
 Delta R.T.: -0.007 min
 Response: 114875
 Conc: 101.00 ng/ml



#12 AR-1232-2

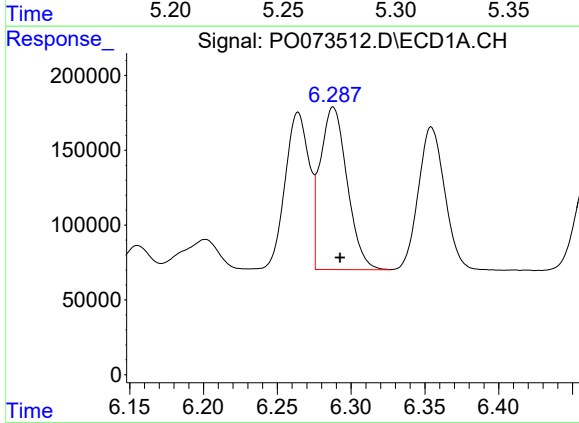
R.T.: 5.969 min
 Delta R.T.: -0.004 min
 Response: 488243
 Conc: 513.06 ng/ml

Instrument :
 ECD_O
 ClientSampled :



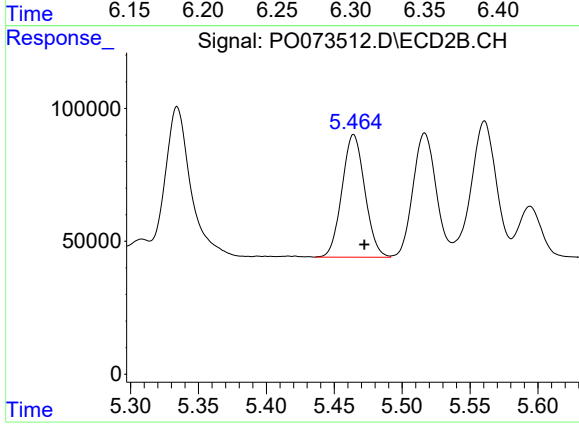
#12 AR-1232-2

R.T.: 5.275 min
 Delta R.T.: -0.007 min
 Response: 772218
 Conc: 646.10 ng/ml



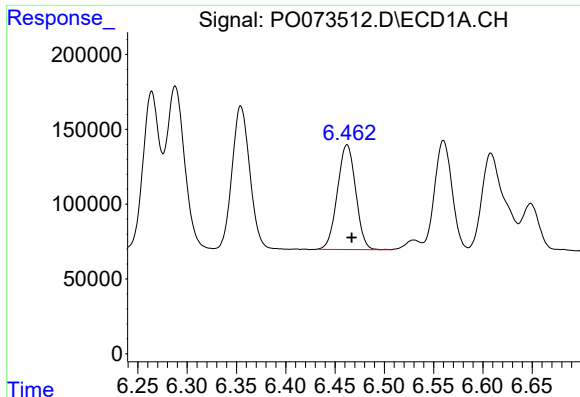
#13 AR-1232-3

R.T.: 6.288 min
 Delta R.T.: -0.005 min
 Response: 1380057
 Conc: 705.50 ng/ml



#13 AR-1232-3

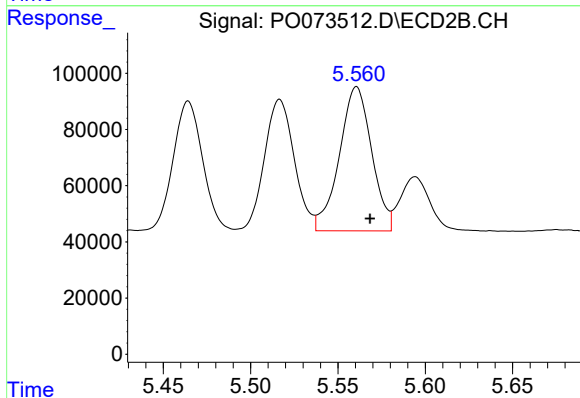
R.T.: 5.464 min
 Delta R.T.: -0.008 min
 Response: 539935
 Conc: 860.70 ng/ml



#14 AR-1232-4

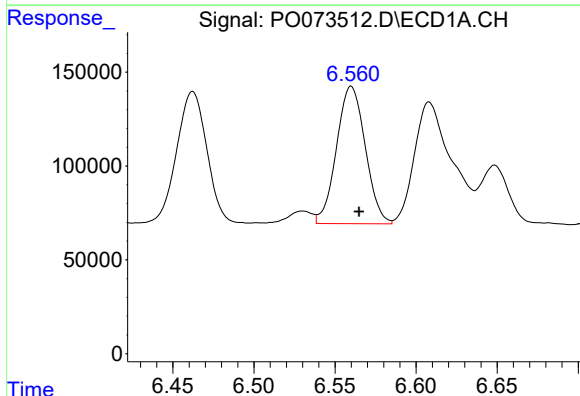
R.T.: 6.462 min
Delta R.T.: -0.005 min
Response: 904211
Conc: 914.54 ng/ml

Instrument :
ECD_O
ClientSampled :



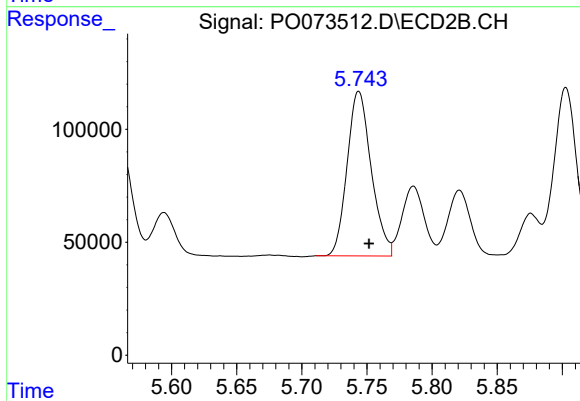
#14 AR-1232-4

R.T.: 5.561 min
Delta R.T.: -0.008 min
Response: 663048
Conc: 1229.84 ng/ml



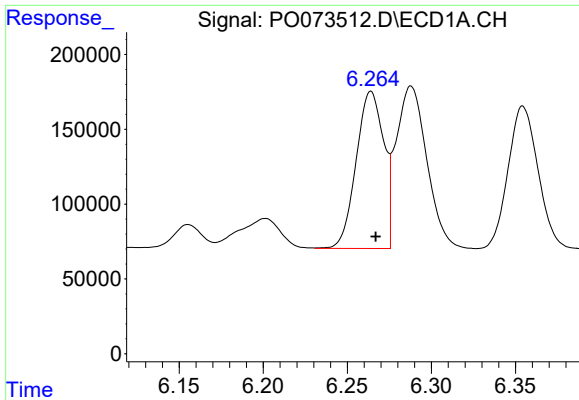
#15 AR-1232-5

R.T.: 6.560 min
Delta R.T.: -0.005 min
Response: 904097
Conc: 1342.88 ng/ml



#15 AR-1232-5

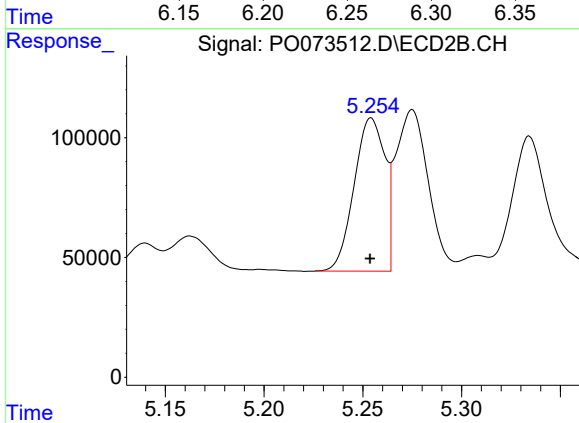
R.T.: 5.744 min
Delta R.T.: -0.008 min
Response: 938216
Conc: 1588.11 ng/ml



#16 AR-1242-1

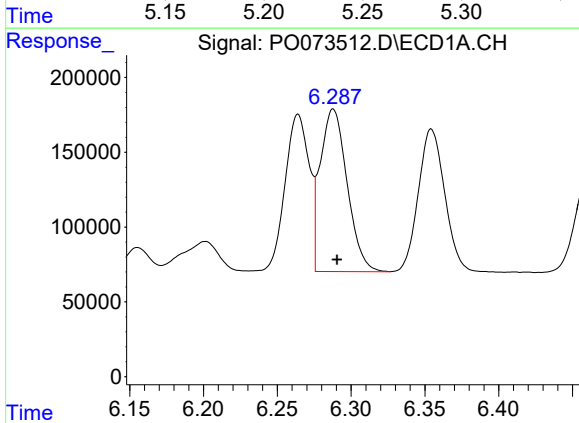
R.T.: 6.264 min
 Delta R.T.: -0.003 min
 Response: 1196103
 Conc: 453.51 ng/ml

Instrument :
 ECD_O
 ClientSampled :



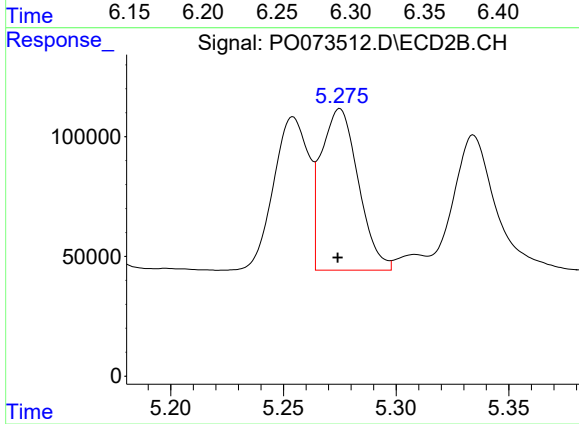
#16 AR-1242-1

R.T.: 5.254 min
 Delta R.T.: 0.000 min
 Response: 692380
 Conc: 423.34 ng/ml



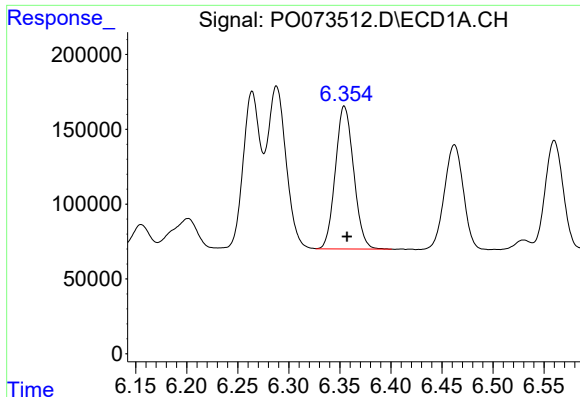
#17 AR-1242-2

R.T.: 6.288 min
 Delta R.T.: -0.003 min
 Response: 1380057
 Conc: 377.54 ng/ml



#17 AR-1242-2

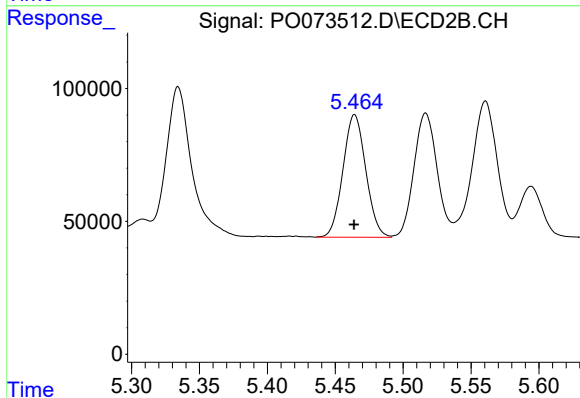
R.T.: 5.275 min
 Delta R.T.: 0.000 min
 Response: 772218
 Conc: 341.41 ng/ml



#18 AR-1242-3

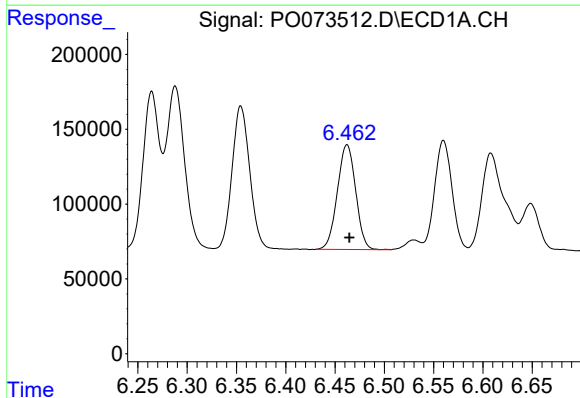
R.T.: 6.354 min
Delta R.T.: -0.003 min
Response: 1188947
Conc: 539.13 ng/ml

Instrument :
ECD_O
ClientSampleId :



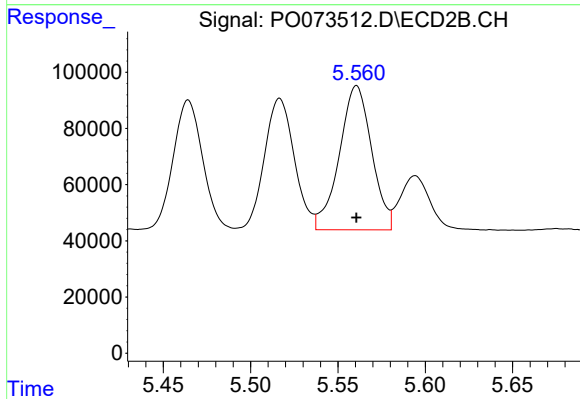
#18 AR-1242-3

R.T.: 5.464 min
Delta R.T.: 0.000 min
Response: 539935
Conc: 449.72 ng/ml



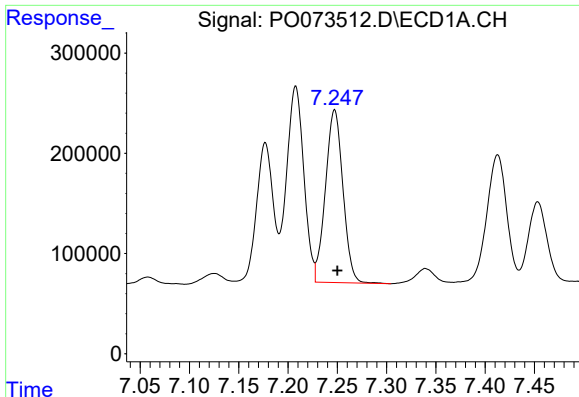
#19 AR-1242-4

R.T.: 6.462 min
Delta R.T.: -0.002 min
Response: 904211
Conc: 487.14 ng/ml



#19 AR-1242-4

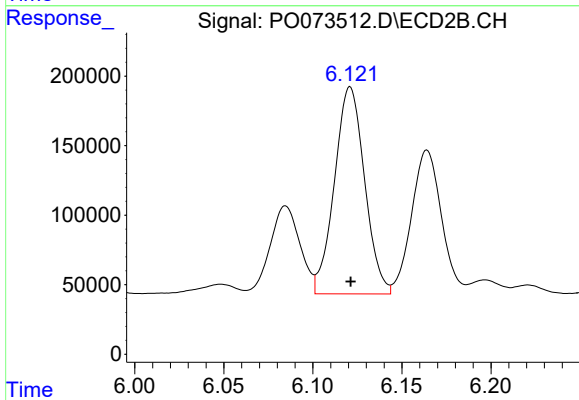
R.T.: 5.561 min
Delta R.T.: 0.000 min
Response: 663048
Conc: 603.26 ng/ml



#20 AR-1242-5

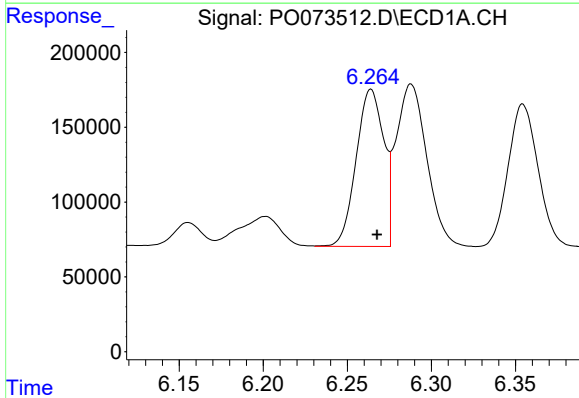
R.T.: 7.247 min
 Delta R.T.: -0.003 min
 Response: 2129482
 Conc: 1012.42 ng/ml

Instrument :
 ECD_O
 ClientSampled :



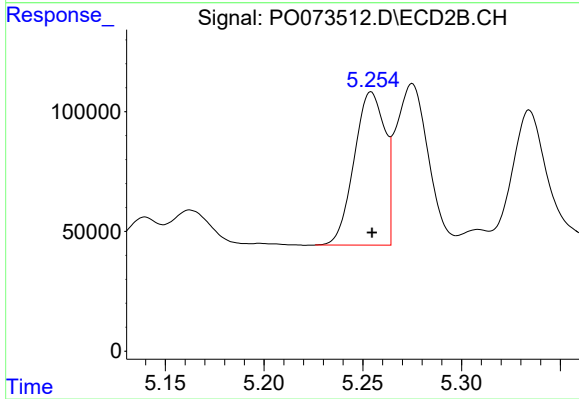
#20 AR-1242-5

R.T.: 6.121 min
 Delta R.T.: 0.000 min
 Response: 1756397
 Conc: 1134.35 ng/ml



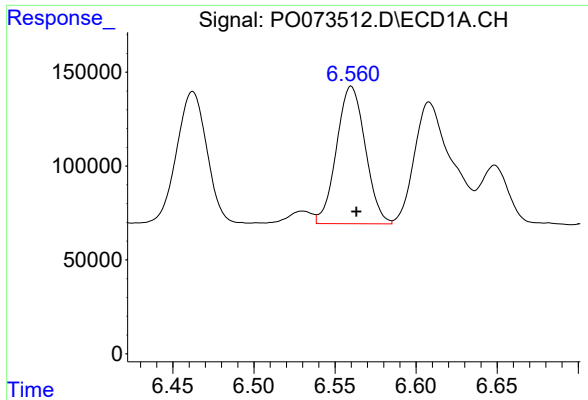
#21 AR-1248-1

R.T.: 6.264 min
 Delta R.T.: -0.004 min
 Response: 1196103
 Conc: 598.32 ng/ml



#21 AR-1248-1

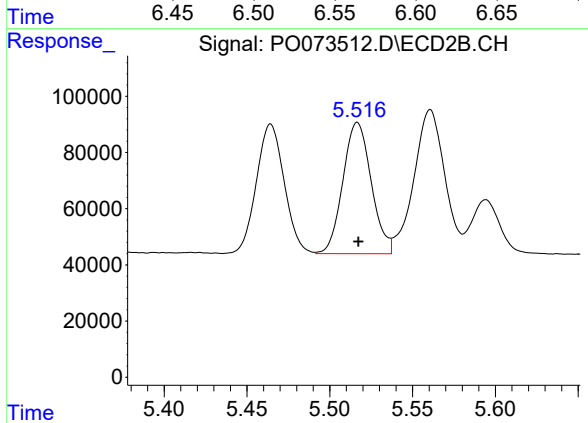
R.T.: 5.254 min
 Delta R.T.: 0.000 min
 Response: 692380
 Conc: 552.10 ng/ml



#22 AR-1248-2

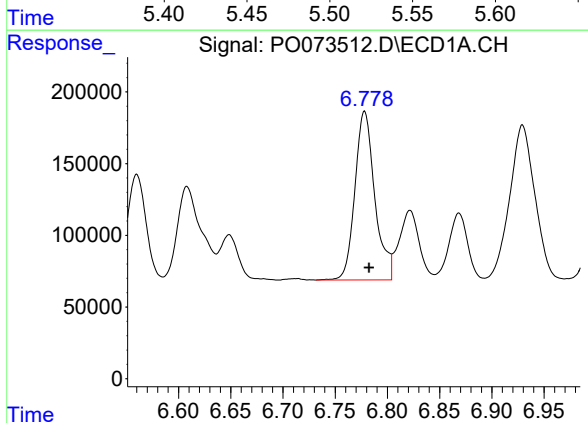
R.T.: 6.560 min
 Delta R.T.: -0.003 min
 Response: 904097
 Conc: 349.72 ng/ml

Instrument :
 ECD_O
 ClientSampleId :



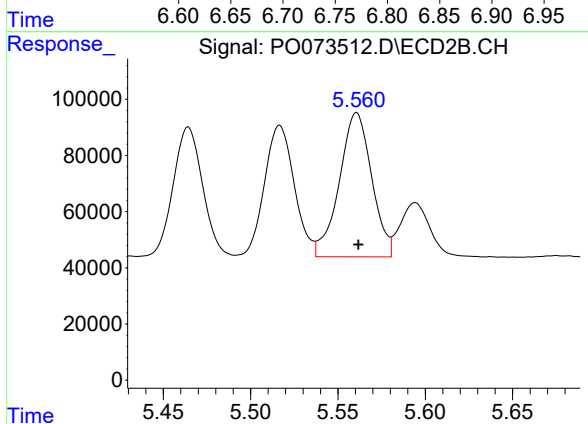
#22 AR-1248-2

R.T.: 5.517 min
 Delta R.T.: 0.000 min
 Response: 557910
 Conc: 329.90 ng/ml



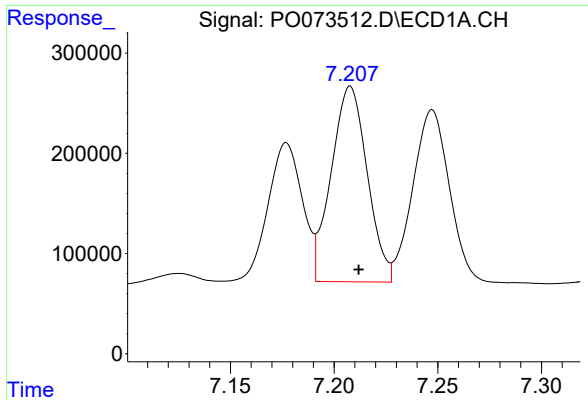
#23 AR-1248-3

R.T.: 6.778 min
 Delta R.T.: -0.004 min
 Response: 1557914
 Conc: 508.36 ng/ml



#23 AR-1248-3

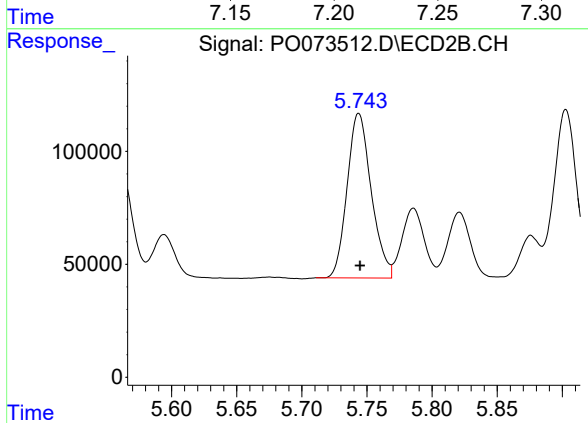
R.T.: 5.561 min
 Delta R.T.: -0.001 min
 Response: 663048
 Conc: 388.55 ng/ml



#24 AR-1248-4

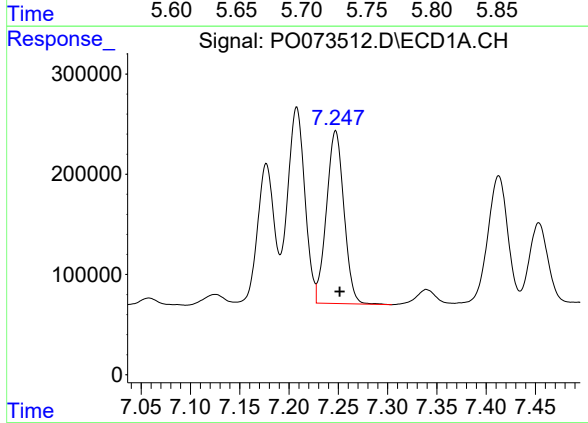
R.T.: 7.208 min
 Delta R.T.: -0.004 min
 Response: 2360642
 Conc: 632.83 ng/ml

Instrument :
 ECD_O
 ClientSampled :



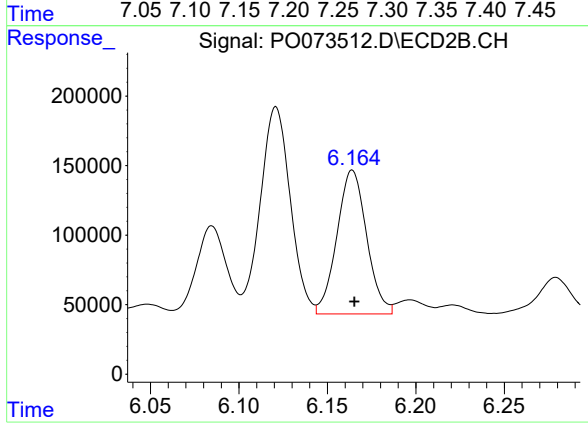
#24 AR-1248-4

R.T.: 5.744 min
 Delta R.T.: 0.000 min
 Response: 938216
 Conc: 456.40 ng/ml



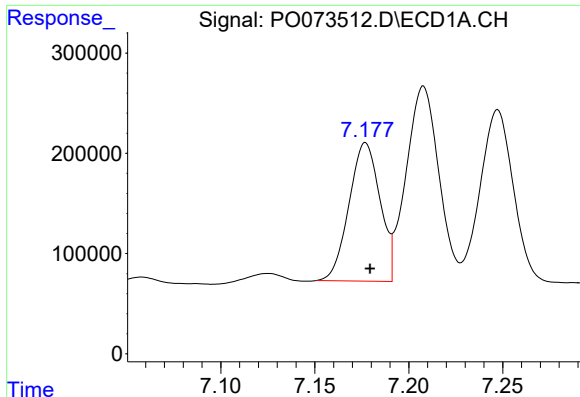
#25 AR-1248-5

R.T.: 7.247 min
 Delta R.T.: -0.004 min
 Response: 2129482
 Conc: 595.17 ng/ml



#25 AR-1248-5

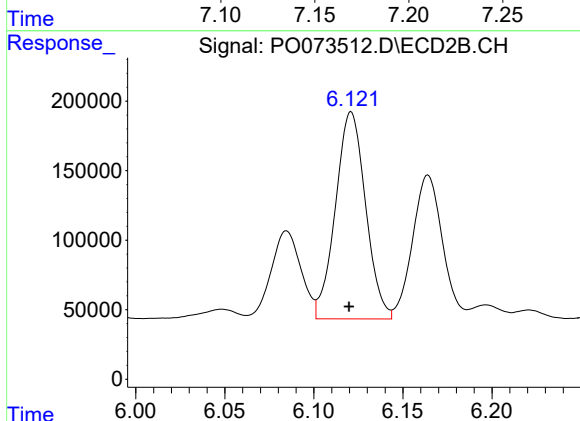
R.T.: 6.164 min
 Delta R.T.: -0.001 min
 Response: 1209820
 Conc: 544.83 ng/ml



#26 AR-1254-1

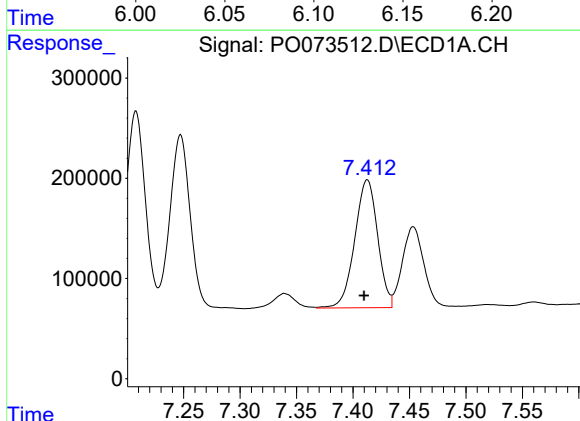
R.T.: 7.177 min
 Delta R.T.: -0.002 min
 Response: 1584109
 Conc: 458.06 ng/ml

Instrument :
 ECD_O
 ClientSampled :



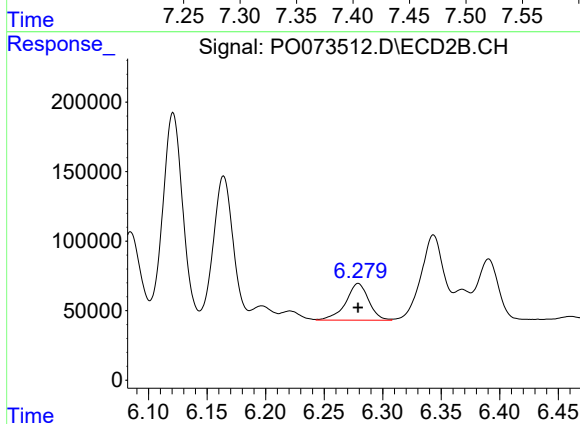
#26 AR-1254-1

R.T.: 6.121 min
 Delta R.T.: 0.001 min
 Response: 1756397
 Conc: 564.07 ng/ml



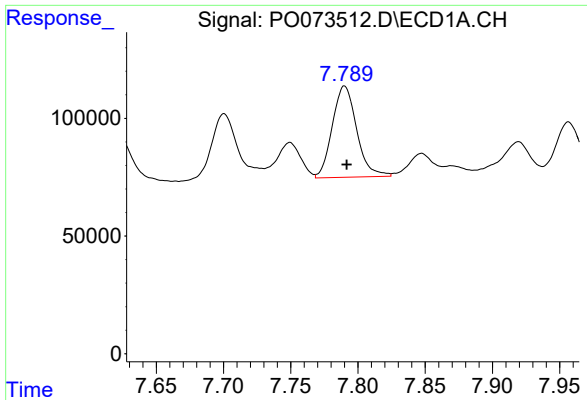
#27 AR-1254-2

R.T.: 7.413 min
 Delta R.T.: 0.003 min
 Response: 1804616
 Conc: 331.25 ng/ml



#27 AR-1254-2

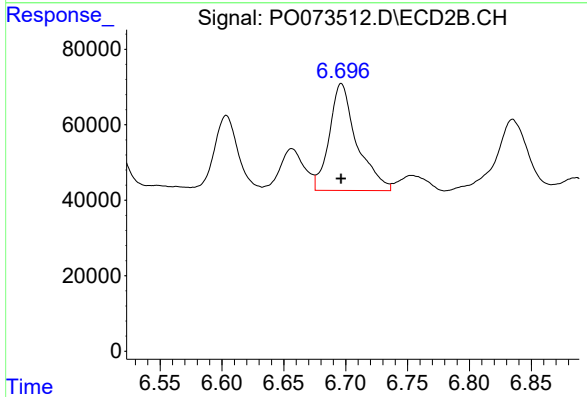
R.T.: 6.279 min
 Delta R.T.: 0.000 min
 Response: 360010
 Conc: 131.87 ng/ml



#28 AR-1254-3

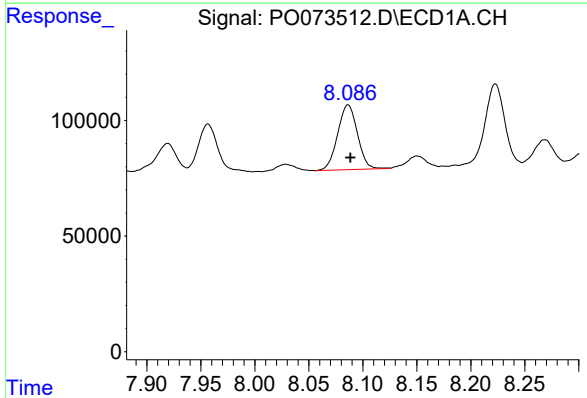
R.T.: 7.790 min
 Delta R.T.: -0.002 min
 Response: 488304
 Conc: 86.16 ng/ml

Instrument :
 ECD_O
 ClientSampleId :



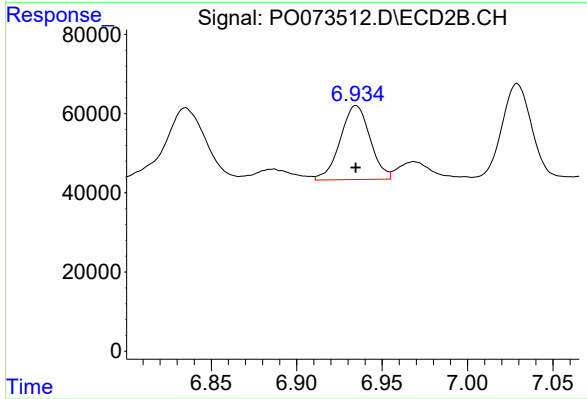
#28 AR-1254-3

R.T.: 6.696 min
 Delta R.T.: 0.000 min
 Response: 436518
 Conc: 103.21 ng/ml



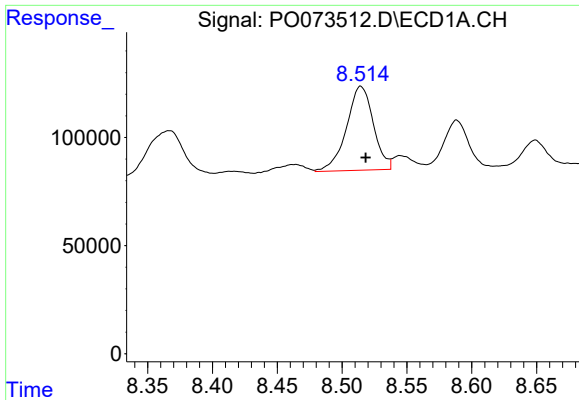
#29 AR-1254-4

R.T.: 8.086 min
 Delta R.T.: -0.002 min
 Response: 357945
 Conc: 73.98 ng/ml



#29 AR-1254-4

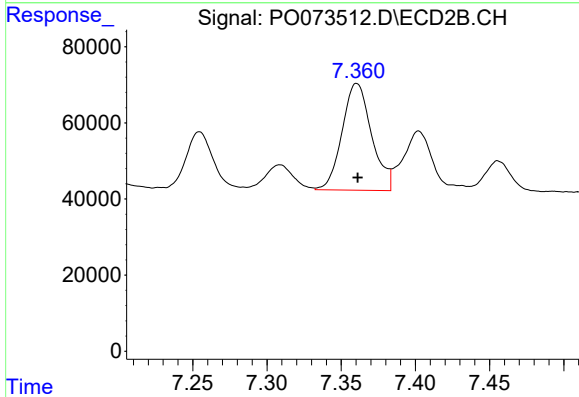
R.T.: 6.935 min
 Delta R.T.: 0.000 min
 Response: 227373
 Conc: 78.76 ng/ml



#30 AR-1254-5

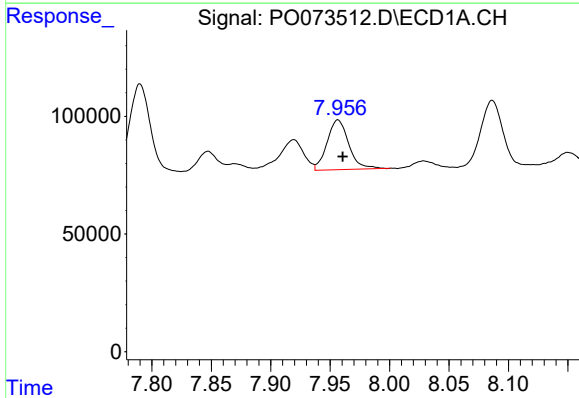
R.T.: 8.515 min
 Delta R.T.: -0.004 min
 Response: 559700
 Conc: 117.58 ng/ml

Instrument :
 ECD_O
 ClientSampleId :



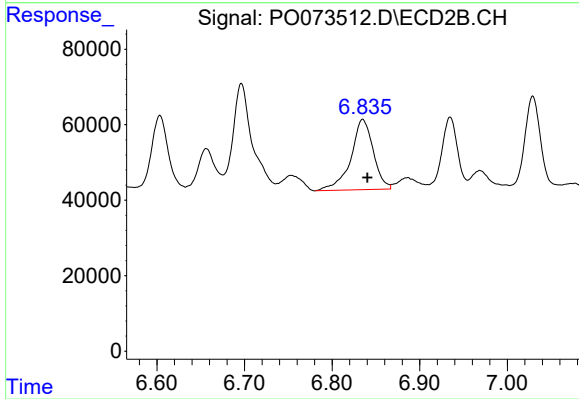
#30 AR-1254-5

R.T.: 7.360 min
 Delta R.T.: 0.000 min
 Response: 388600
 Conc: 105.22 ng/ml



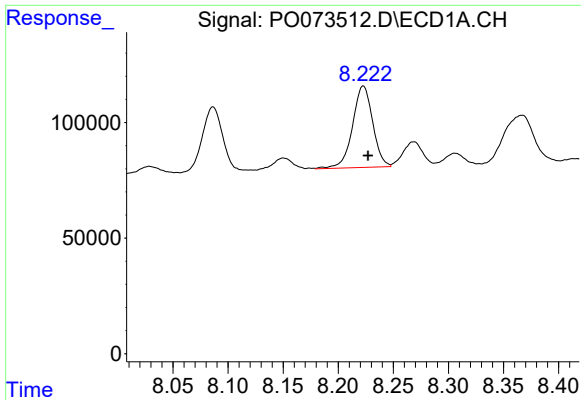
#31 AR-1260-1

R.T.: 7.957 min
 Delta R.T.: -0.004 min
 Response: 269984
 Conc: 66.91 ng/ml



#31 AR-1260-1

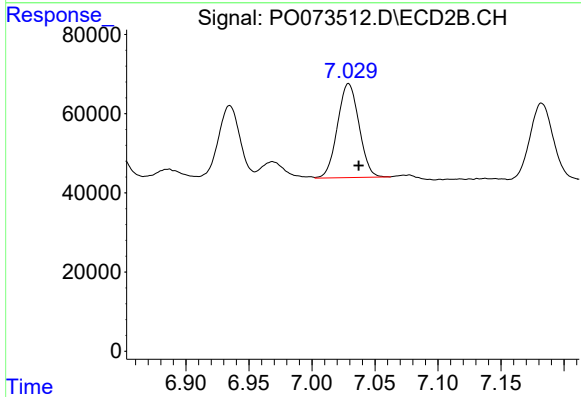
R.T.: 6.835 min
 Delta R.T.: -0.005 min
 Response: 331981
 Conc: 123.56 ng/ml



#32 AR-1260-2

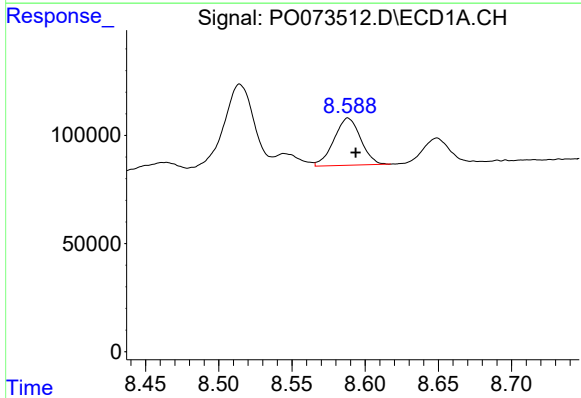
R.T.: 8.223 min
 Delta R.T.: -0.005 min
 Response: 449822
 Conc: 81.85 ng/ml

Instrument :
 ECD_O
 ClientSampleId :



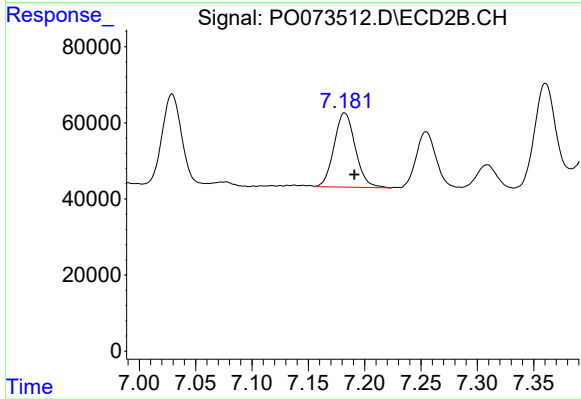
#32 AR-1260-2

R.T.: 7.029 min
 Delta R.T.: -0.008 min
 Response: 281789
 Conc: 84.48 ng/ml



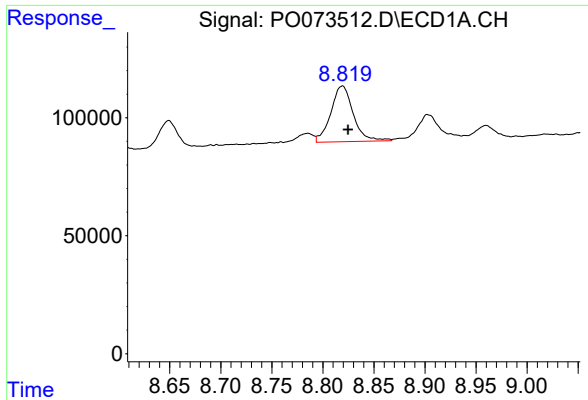
#33 AR-1260-3

R.T.: 8.588 min
 Delta R.T.: -0.005 min
 Response: 276807
 Conc: 62.38 ng/ml



#33 AR-1260-3

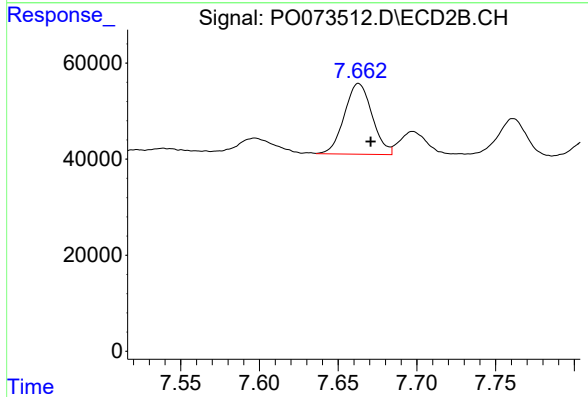
R.T.: 7.182 min
 Delta R.T.: -0.009 min
 Response: 255987
 Conc: 82.87 ng/ml



#34 AR-1260-4

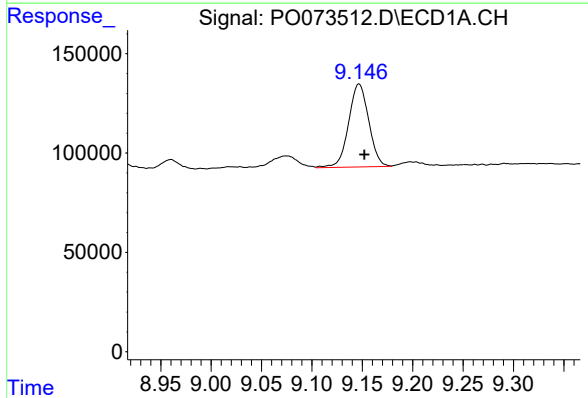
R.T.: 8.819 min
 Delta R.T.: -0.006 min
 Response: 361297
 Conc: 83.71 ng/ml

Instrument :
 ECD_O
 ClientSampleId :



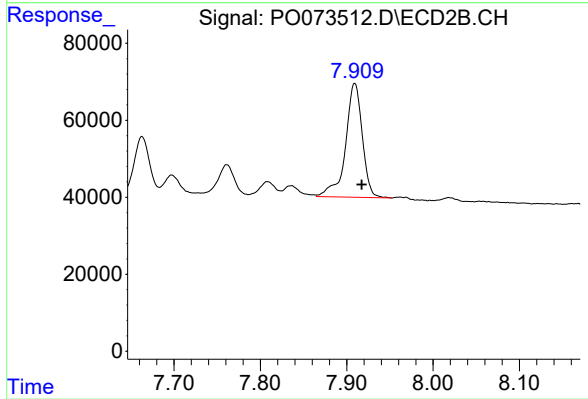
#34 AR-1260-4

R.T.: 7.663 min
 Delta R.T.: -0.008 min
 Response: 180736
 Conc: 73.45 ng/ml



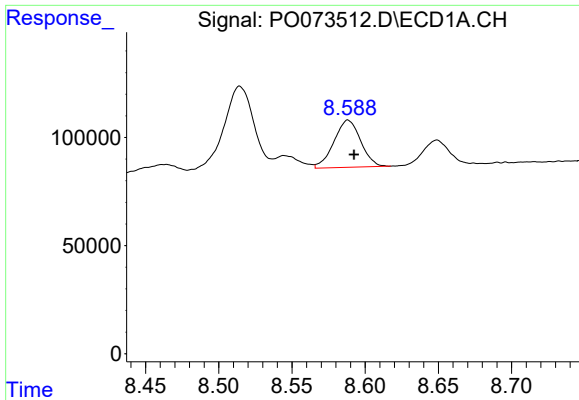
#35 AR-1260-5

R.T.: 9.147 min
 Delta R.T.: -0.005 min
 Response: 580670
 Conc: 58.80 ng/ml



#35 AR-1260-5

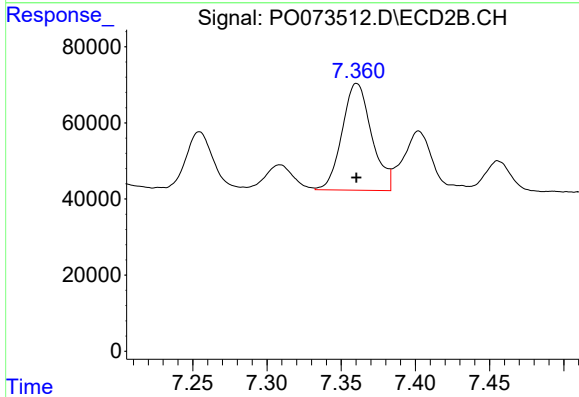
R.T.: 7.909 min
 Delta R.T.: -0.008 min
 Response: 399894
 Conc: 64.55 ng/ml



#36 AR-1262-1

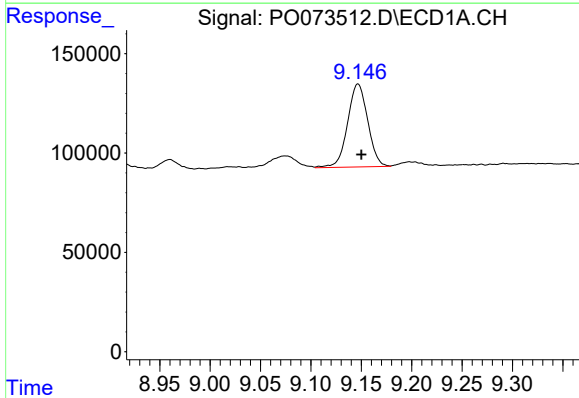
R.T.: 8.588 min
 Delta R.T.: -0.004 min
 Response: 276807
 Conc: 44.34 ng/ml

Instrument :
 ECD_O
 ClientSampled :



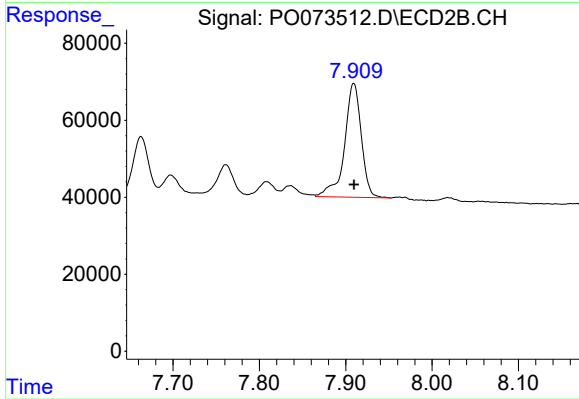
#36 AR-1262-1

R.T.: 7.360 min
 Delta R.T.: 0.000 min
 Response: 388600
 Conc: 200.52 ng/ml



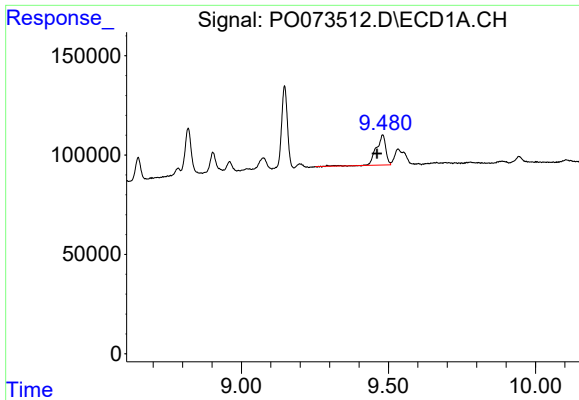
#37 AR-1262-2

R.T.: 9.147 min
 Delta R.T.: -0.003 min
 Response: 580670
 Conc: 53.68 ng/ml



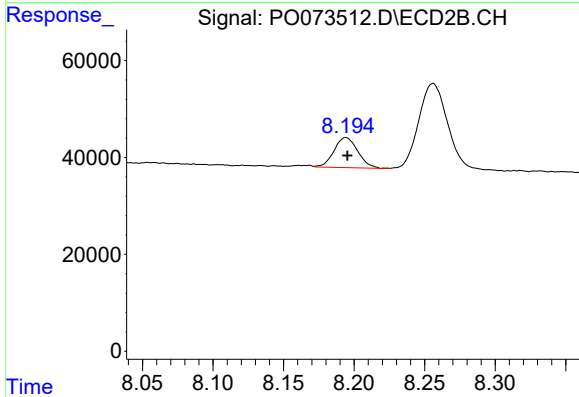
#37 AR-1262-2

R.T.: 7.909 min
 Delta R.T.: 0.000 min
 Response: 399894
 Conc: 60.99 ng/ml

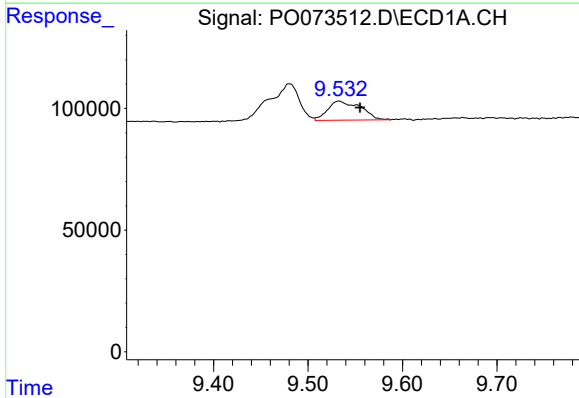


#38 AR-1262-3
 R.T.: 9.480 min
 Delta R.T.: 0.019 min
 Response: 342465
 Conc: 46.66 ng/ml

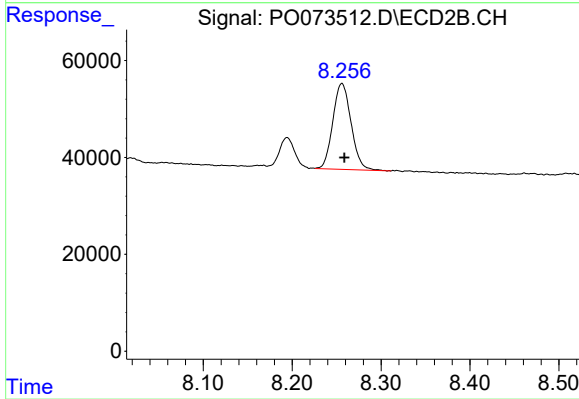
Instrument :
 ECD_O
 ClientSampleId :



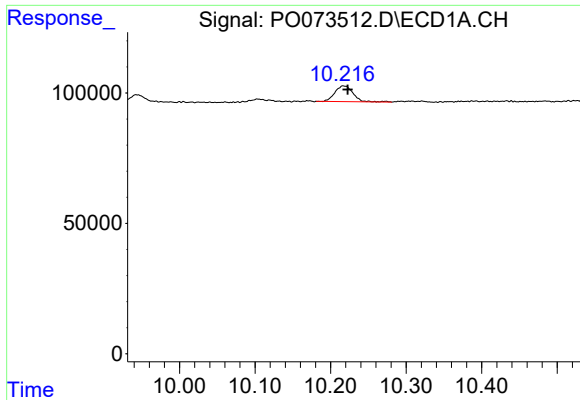
#38 AR-1262-3
 R.T.: 8.194 min
 Delta R.T.: 0.000 min
 Response: 72330
 Conc: 26.81 ng/ml



#39 AR-1262-4
 R.T.: 9.533 min
 Delta R.T.: -0.022 min
 Response: 189688
 Conc: 34.47 ng/ml

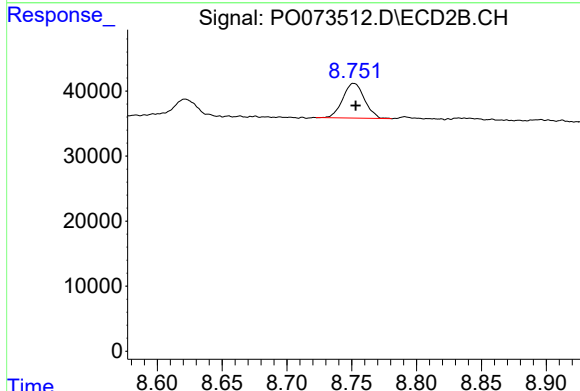


#39 AR-1262-4
 R.T.: 8.256 min
 Delta R.T.: -0.003 min
 Response: 253292
 Conc: 53.05 ng/ml

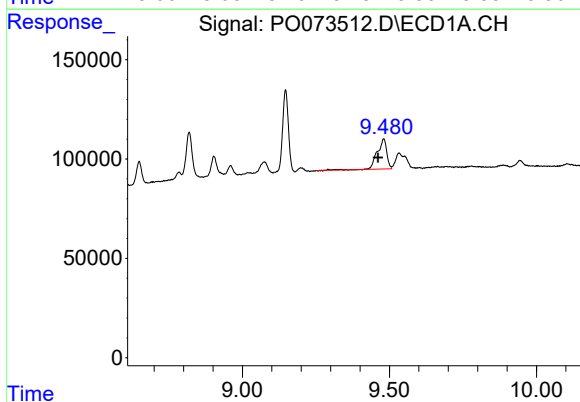


#40 AR-1262-5
 R.T.: 10.218 min
 Delta R.T.: -0.005 min
 Response: 100061
 Conc: 25.71 ng/ml

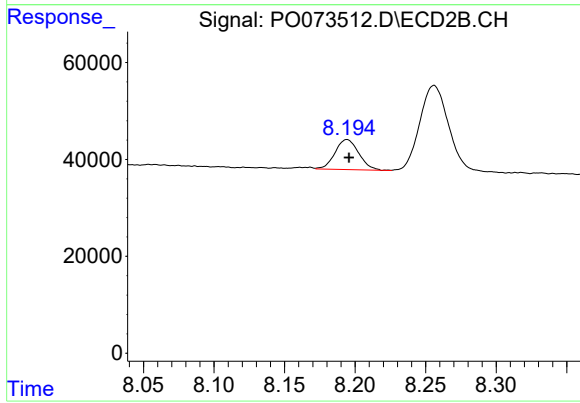
Instrument :
 ECD_O
 ClientSampled :



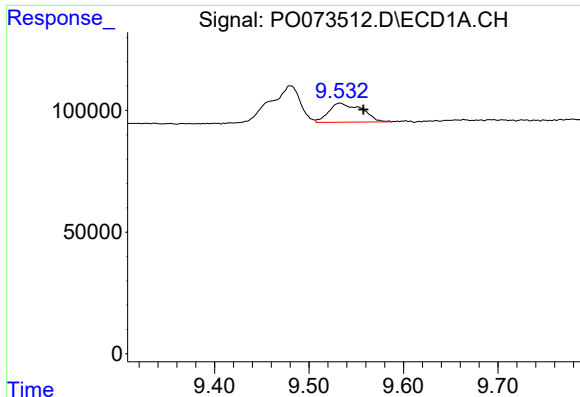
#40 AR-1262-5
 R.T.: 8.752 min
 Delta R.T.: -0.001 min
 Response: 62262
 Conc: 27.22 ng/ml



#41 AR-1268-1
 R.T.: 9.480 min
 Delta R.T.: 0.019 min
 Response: 342465
 Conc: 24.52 ng/ml



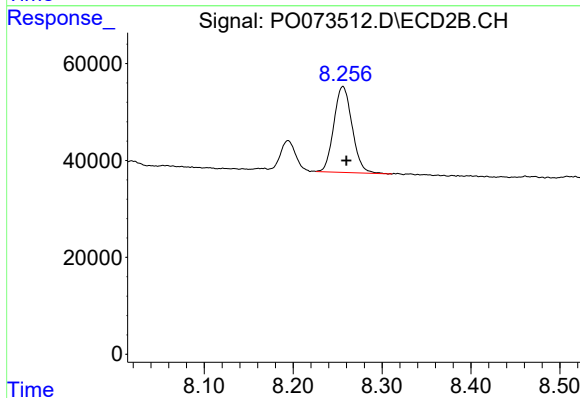
#41 AR-1268-1
 R.T.: 8.194 min
 Delta R.T.: -0.002 min
 Response: 72330
 Conc: 8.88 ng/ml



#42 AR-1268-2

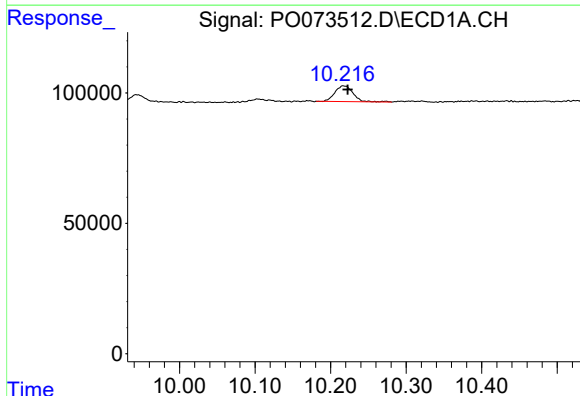
R.T.: 9.533 min
 Delta R.T.: -0.025 min
 Response: 189688
 Conc: 15.61 ng/ml

Instrument :
 ECD_O
 ClientSampleId :



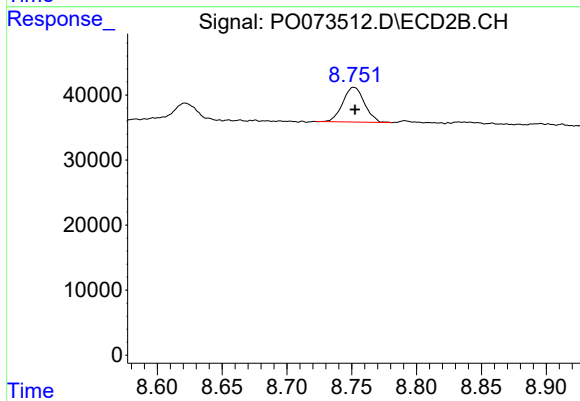
#42 AR-1268-2

R.T.: 8.256 min
 Delta R.T.: -0.004 min
 Response: 253292
 Conc: 34.68 ng/ml



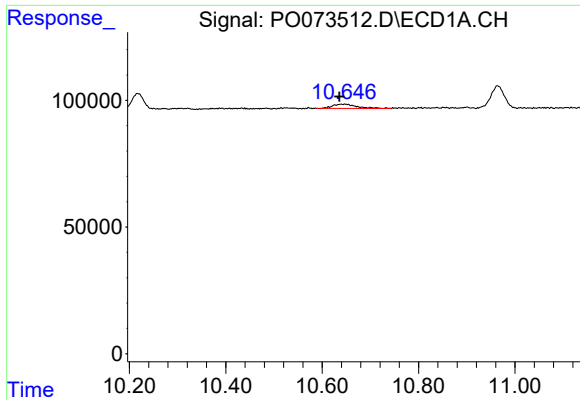
#44 AR-1268-4

R.T.: 10.218 min
 Delta R.T.: -0.005 min
 Response: 100061
 Conc: 22.18 ng/ml



#44 AR-1268-4

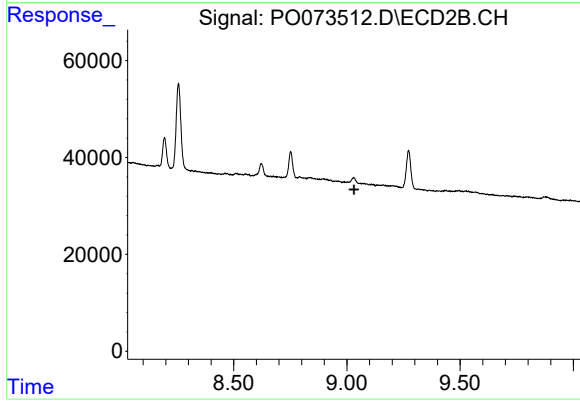
R.T.: 8.752 min
 Delta R.T.: 0.000 min
 Response: 62262
 Conc: 23.24 ng/ml



#45 AR-1268-5

R.T.: 10.646 min
Delta R.T.: 0.010 min
Response: 59101
Conc: 1.86 ng/ml

Instrument :
ECD_O
ClientSampleId :



#45 AR-1268-5

R.T.: 0.000 min
Exp R.T. : 9.031 min
Response: 0
Conc: N.D.