

Data Path : Z:\pestpcbsrv\HPCHEM1\ECD_0\Data\PO112420\
 Data File : PO073513.D
 Signal(s) : Signal #1: ECD1A.CH Signal #2: ECD2B.CH
 Acq On : 24 Nov 2020 14:39
 Operator : DD\AJ
 Sample : L4840-02 10X
 Misc :
 ALS Vial : 15 Sample Multiplier: 1

Instrument :
 ECD_0
 ClientSampled :

Integration File signal 1: autoint1.e
 Integration File signal 2: autoint2.e
 Quant Time: Nov 25 10:32:01 2020
 Quant Method : Z:\pestpcbsrv\HPCHEM1\ECD_0\methods\PO112320.M
 Quant Title : GC EXTRACTABLES
 QLast Update : Wed Nov 25 10:04:26 2020
 Response via : Initial Calibration
 Integrator: ChemStation 6890 Scale Mode: Small noise peaks clipped

Volume Inj. : 2 µl
 Signal #1 Phase : ZB-MR1 Signal #2 Phase: ZB-MR2
 Signal #1 Info : 30Mx0.32mmx 0.50µ Signal #2 Info : 30M x 0.32mm x 0.25µm

| Compound | RT#1 | RT#2 | Resp#1 | Resp#2 | ng/ml | ng/ml |
|-----------------------------|--------|-------|---------|---------|----------|------------|
| System Monitoring Compounds | | | | | | |
| 1) SA Tetrachlo... | 4.943 | 4.008 | 192152 | 139564 | 2.297 | 2.847 |
| 2) SA Decachlor... | 10.966 | 9.274 | 185445 | 117198 | 2.249 | 2.556 |
| Target Compounds | | | | | | |
| 3) L1 AR-1016-1 | 6.266 | 5.256 | 1379726 | 800127 | 418.987 | 392.755 |
| 4) L1 AR-1016-2 | 6.289 | 5.276 | 1624222 | 893786 | 352.826 | 319.580 |
| 5) L1 AR-1016-3 | 6.356 | 5.466 | 1377914 | 627856 | 503.215 | 422.221 |
| 6) L1 AR-1016-4 | 6.463 | 5.518 | 1068649 | 645569 | 468.206 | 543.198 |
| 7) L1 AR-1016-5 | 6.780 | 5.745 | 1807859 | 1082805 | 804.083 | 719.327 |
| 8) L2 AR-1221-1 | 5.183 | 0.000 | 37202 | 0 | 37.504 | N.D. # |
| 9) L2 AR-1221-2 | 5.295 | 4.361 | 33897 | 23570 | 48.196 | 58.307 |
| 10) L2 AR-1221-3 | 5.380 | 4.449 | 199801 | 124126 | 89.113 | 93.461 |
| 11) L3 AR-1232-1 | 5.380 | 4.449 | 199801 | 124126 | 108.265 | 109.135 |
| 12) L3 AR-1232-2 | 5.971 | 5.276 | 542921 | 893786 | 570.518 | 747.819 # |
| 13) L3 AR-1232-3 | 6.289 | 5.466 | 1624222 | 627856 | 830.325 | 1000.859 |
| 14) L3 AR-1232-4 | 6.463 | 5.562 | 1068649 | 764533 | 1080.852 | 1418.081 # |
| 15) L3 AR-1232-5 | 6.562 | 5.745 | 1130326 | 1082805 | 1678.908 | 1832.850 |
| 16) L4 AR-1242-1 | 6.266 | 5.256 | 1379726 | 800127 | 523.127 | 489.217 |
| 17) L4 AR-1242-2 | 6.289 | 5.276 | 1624222 | 893786 | 444.330 | 395.162 |
| 18) L4 AR-1242-3 | 6.356 | 5.466 | 1377914 | 627856 | 624.820 | 522.948 |
| 19) L4 AR-1242-4 | 6.463 | 5.562 | 1068649 | 764533 | 575.733 | 695.599 |
| 20) L4 AR-1242-5 | 7.248 | 6.122 | 2536077 | 2067466 | 1205.727 | 1335.246 |
| 21) L5 AR-1248-1 | 6.266 | 5.256 | 1379726 | 800127 | 690.172 | 638.020 |
| 22) L5 AR-1248-2 | 6.562 | 5.518 | 1130326 | 645569 | 437.228 | 381.736 |
| 23) L5 AR-1248-3 | 6.780 | 5.562 | 1807859 | 764533 | 589.924 | 448.017 |
| 24) L5 AR-1248-4 | 7.210 | 5.745 | 2813049 | 1082805 | 754.111 | 526.735 # |
| 25) L5 AR-1248-5 | 7.248 | 6.165 | 2536077 | 1424544 | 708.807 | 641.534 |
| 26) L6 AR-1254-1 | 7.178 | 6.122 | 1895496 | 2067466 | 548.095 | 663.967 |
| 27) L6 AR-1254-2 | 7.414 | 6.281 | 2126479 | 418036 | 390.326 | 153.126 # |
| 28) L6 AR-1254-3 | 7.791 | 6.698 | 560718 | 481973 | 98.940 | 113.962 |
| 29) L6 AR-1254-4 | 8.087 | 6.936 | 401129 | 257429 | 82.910 | 89.167 |
| 30) L6 AR-1254-5 | 8.517 | 7.362 | 605108 | 429834 | 127.114 | 116.386 |
| 31) L7 AR-1260-1 | 7.959 | 6.836 | 296150 | 354553 | 73.391 | 131.962 # |
| 32) L7 AR-1260-2 | 8.224 | 7.031 | 482535 | 296989 | 87.800 | 89.039 |
| 33) L7 AR-1260-3 | 8.591 | 7.183 | 285781 | 274639 | 64.401 | 88.904 # |
| 34) L7 AR-1260-4 | 8.820 | 7.665 | 390367 | 180053 | 90.443 | 73.169 |
| 35) L7 AR-1260-5 | 9.149 | 7.911 | 599133 | 415115 | 60.672 | 67.007 |
| 36) L8 AR-1262-1 | 8.591 | 7.362 | 285781 | 429834 | 45.773 | 221.799 # |
| 37) L8 AR-1262-2 | 9.149 | 7.911 | 599133 | 415115 | 55.387 | 63.314 |
| 38) L8 AR-1262-3 | 9.482f | 8.196 | 352273 | 76113 | 47.994 | 28.209 # |
| 39) L8 AR-1262-4 | 9.535f | 8.257 | 189047 | 261744 | 34.353 | 54.819 # |
| 40) L8 AR-1262-5 | 10.220 | 8.753 | 101798 | 64036 | 26.153 | 27.999 |
| 41) L9 AR-1268-1 | 9.482f | 8.196 | 352273 | 76113 | 25.219 | 9.343 # |

Data Path : Z:\pestpcbsrv\HPCHEM1\ECD_0\Data\PO112420\
 Data File : PO073513.D
 Signal(s) : Signal #1: ECD1A.CH Signal #2: ECD2B.CH
 Acq On : 24 Nov 2020 14:39
 Operator : DD\AJ
 Sample : L4840-02 10X
 Misc :
 ALS Vial : 15 Sample Multiplier: 1

Instrument :
 ECD_0
 ClientSampleId :

Integration File signal 1: autoint1.e
 Integration File signal 2: autoint2.e
 Quant Time: Nov 25 10:32:01 2020
 Quant Method : Z:\pestpcbsrv\HPCHEM1\ECD_0\methods\PO112320.M
 Quant Title : GC EXTRACTABLES
 QLast Update : Wed Nov 25 10:04:26 2020
 Response via : Initial Calibration
 Integrator: ChemStation 6890 Scale Mode: Small noise peaks clipped

Volume Inj. : 2 µl
 Signal #1 Phase : ZB-MR1 Signal #2 Phase: ZB-MR2
 Signal #1 Info : 30Mx0.32mmx 0.50µ Signal #2 Info : 30M x 0.32mm x 0.25µm

| | Compound | RT#1 | RT#2 | Resp#1 | Resp#2 | ng/ml | ng/ml |
|-----|--------------|--------|-------|--------|--------|--------|----------|
| 42) | L9 AR-1268-2 | 9.535f | 8.257 | 189047 | 261744 | 15.562 | 35.837 # |
| 44) | L9 AR-1268-4 | 10.220 | 8.753 | 101798 | 64036 | 22.565 | 23.907 |
| 45) | L9 AR-1268-5 | 10.638 | 0.000 | 87624 | 0 | 2.753 | N.D. # |

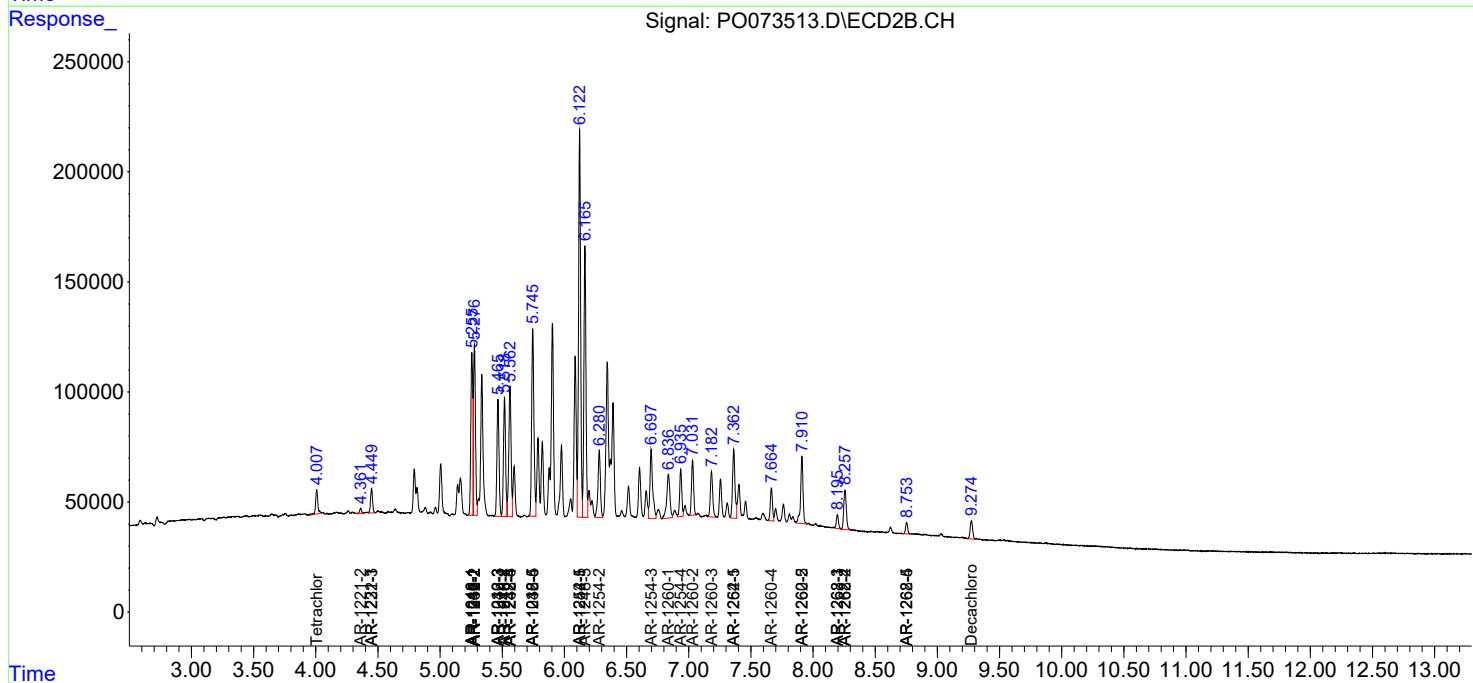
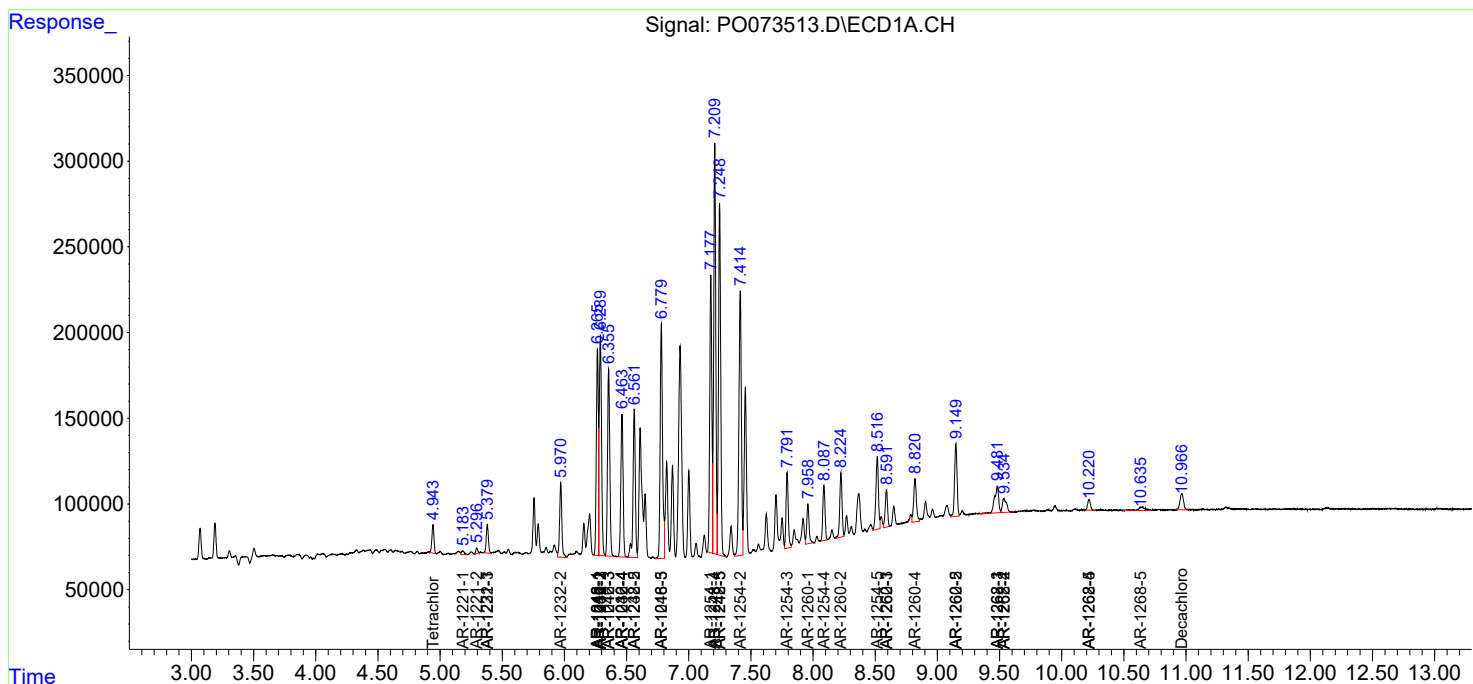
(f)=RT Delta > 1/2 Window (#)=Amounts differ by > 25% (m)=manual int.

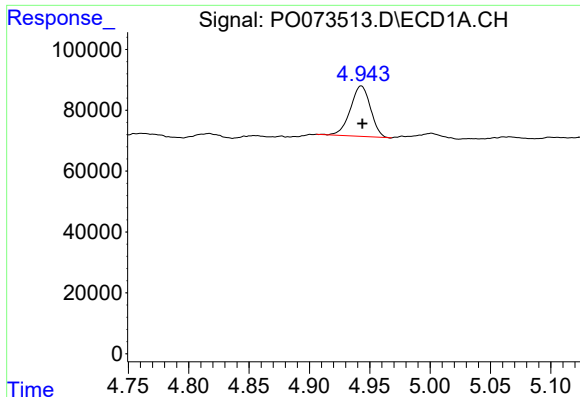
Data Path : Z:\pestpcbsrv\HPCHEM1\ECD_O\Data\PO112420\
 Data File : PO073513.D
 Signal(s) : Signal #1: ECD1A.CH Signal #2: ECD2B.CH
 Acq On : 24 Nov 2020 14:39
 Operator : DD\AJ
 Sample : L4840-02 10X
 Misc :
 ALS Vial : 15 Sample Multiplier: 1

Instrument :
 ECD_O
 ClientSampled :

Integration File signal 1: autoint1.e
 Integration File signal 2: autoint2.e
 Quant Time: Nov 25 10:32:01 2020
 Quant Method : Z:\pestpcbsrv\HPCHEM1\ECD_O\methods\PO112320.M
 Quant Title : GC EXTRACTABLES
 QLast Update : Wed Nov 25 10:04:26 2020
 Response via : Initial Calibration
 Integrator: ChemStation 6890 Scale Mode: Small noise peaks clipped

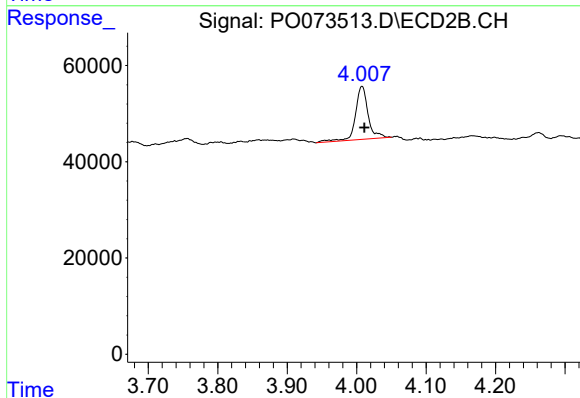
Volume Inj. : 2 µl
 Signal #1 Phase : ZB-MR1 Signal #2 Phase: ZB-MR2
 Signal #1 Info : 30Mx0.32mmx 0.50µ Signal #2 Info : 30M x 0.32mm x 0.25µm



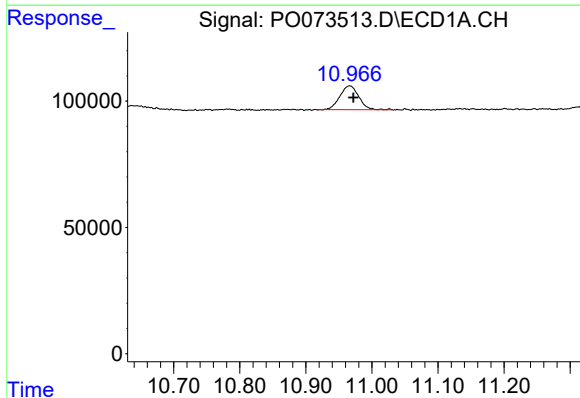


#1 Tetrachloro-m-xylene
 R.T.: 4.943 min
 Delta R.T.: -0.001 min
 Response: 192152
 Conc: 2.30 ng/ml

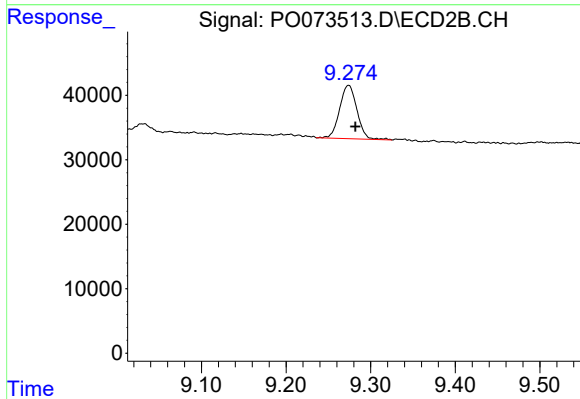
Instrument :
 ECD_O
 ClientSampleId :



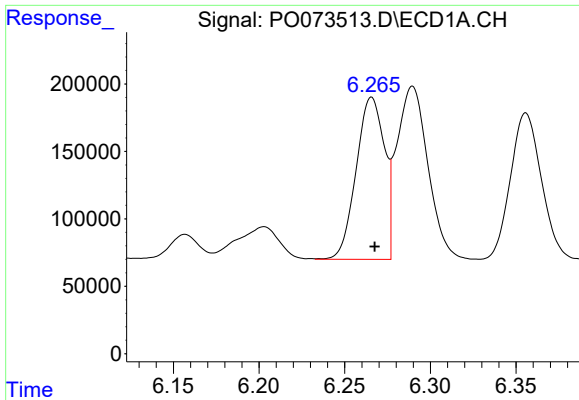
#1 Tetrachloro-m-xylene
 R.T.: 4.008 min
 Delta R.T.: -0.003 min
 Response: 139564
 Conc: 2.85 ng/ml



#2 Decachlorobiphenyl
 R.T.: 10.966 min
 Delta R.T.: -0.006 min
 Response: 185445
 Conc: 2.25 ng/ml



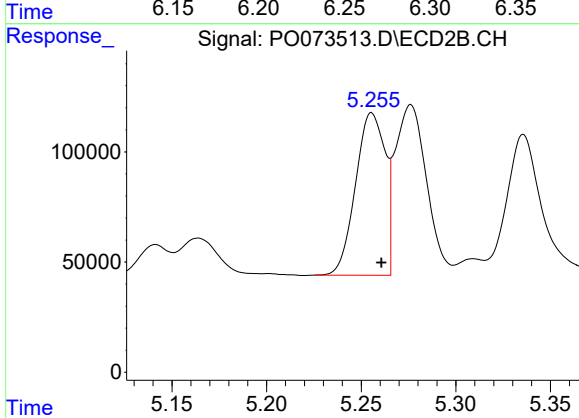
#2 Decachlorobiphenyl
 R.T.: 9.274 min
 Delta R.T.: -0.008 min
 Response: 117198
 Conc: 2.56 ng/ml



#3 AR-1016-1

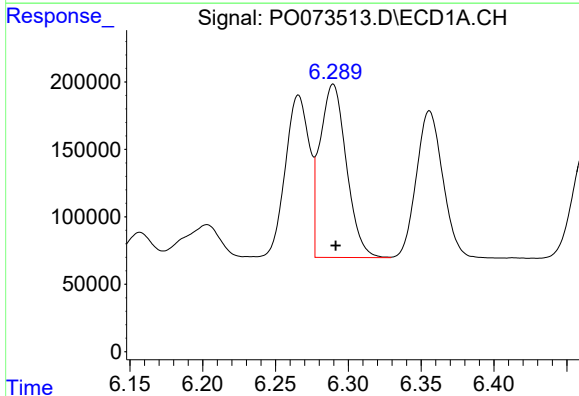
R.T.: 6.266 min
 Delta R.T.: -0.002 min
 Response: 1379726
 Conc: 418.99 ng/ml

Instrument :
 ECD_O
 ClientSampleId :



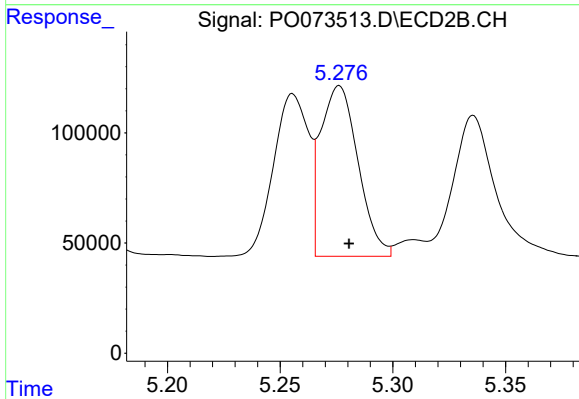
#3 AR-1016-1

R.T.: 5.256 min
 Delta R.T.: -0.005 min
 Response: 800127
 Conc: 392.76 ng/ml



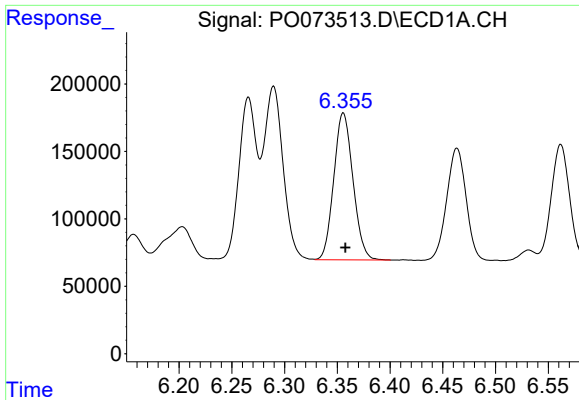
#4 AR-1016-2

R.T.: 6.289 min
 Delta R.T.: -0.002 min
 Response: 1624222
 Conc: 352.83 ng/ml



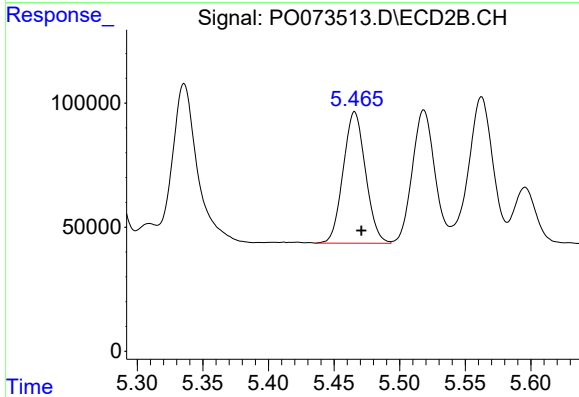
#4 AR-1016-2

R.T.: 5.276 min
 Delta R.T.: -0.004 min
 Response: 893786
 Conc: 319.58 ng/ml

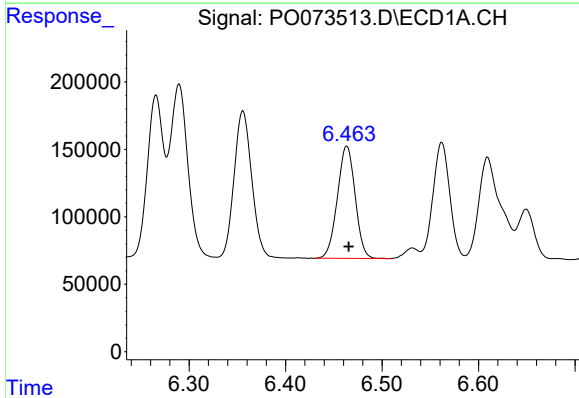


#5 AR-1016-3
 R.T.: 6.356 min
 Delta R.T.: -0.002 min
 Response: 1377914
 Conc: 503.22 ng/ml

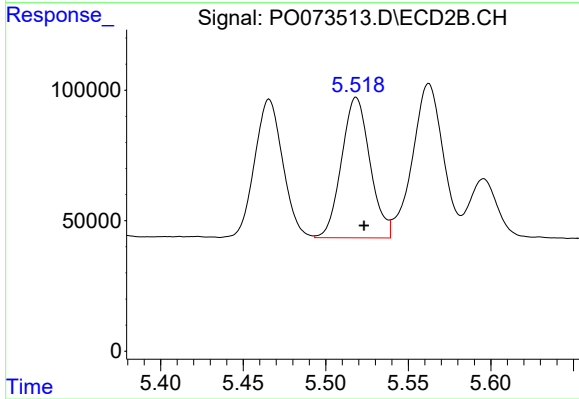
Instrument :
 ECD_O
 ClientSampleId :



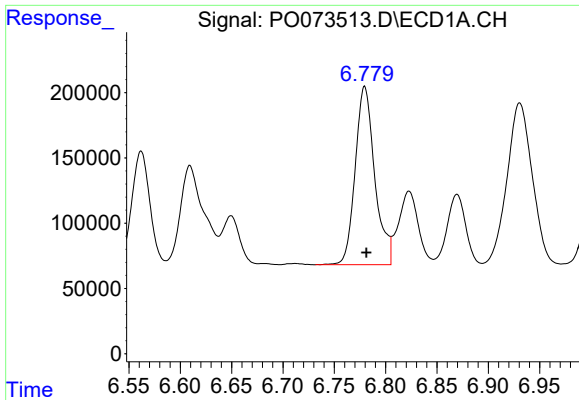
#5 AR-1016-3
 R.T.: 5.466 min
 Delta R.T.: -0.005 min
 Response: 627856
 Conc: 422.22 ng/ml



#6 AR-1016-4
 R.T.: 6.463 min
 Delta R.T.: -0.002 min
 Response: 1068649
 Conc: 468.21 ng/ml



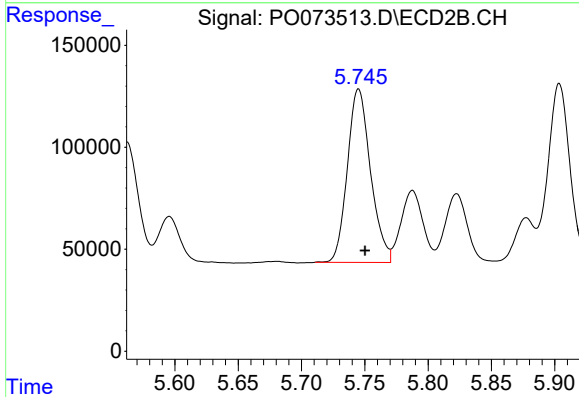
#6 AR-1016-4
 R.T.: 5.518 min
 Delta R.T.: -0.005 min
 Response: 645569
 Conc: 543.20 ng/ml



#7 AR-1016-5

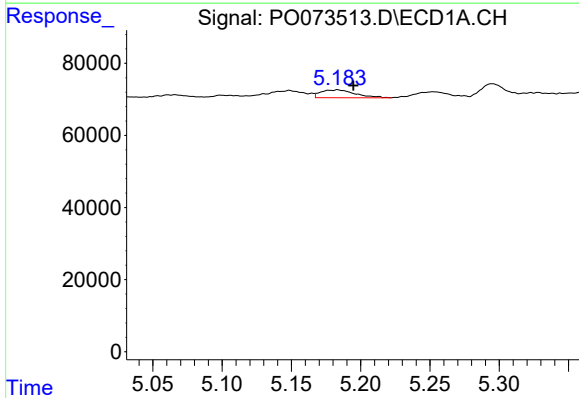
R.T.: 6.780 min
 Delta R.T.: -0.002 min
 Response: 1807859
 Conc: 804.08 ng/ml

Instrument :
 ECD_O
 ClientSampled :



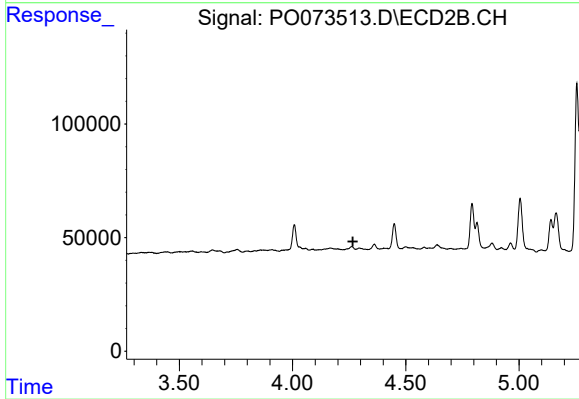
#7 AR-1016-5

R.T.: 5.745 min
 Delta R.T.: -0.005 min
 Response: 1082805
 Conc: 719.33 ng/ml



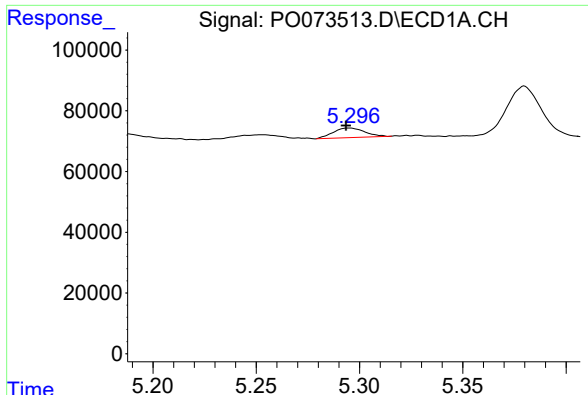
#8 AR-1221-1

R.T.: 5.183 min
 Delta R.T.: -0.012 min
 Response: 37202
 Conc: 37.50 ng/ml



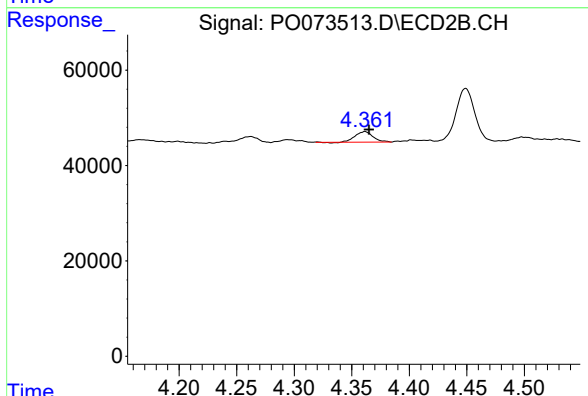
#8 AR-1221-1

R.T.: 0.000 min
 Exp R.T. : 4.266 min
 Response: 0
 Conc: N.D.

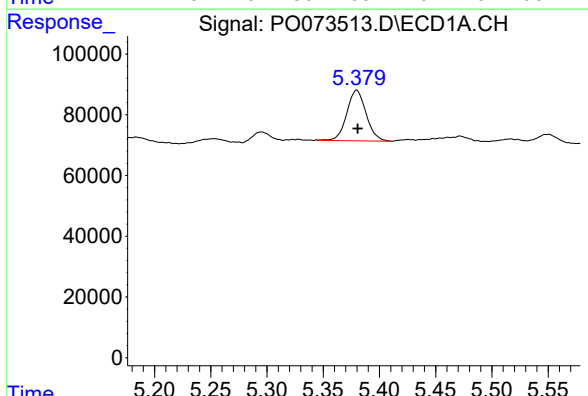


#9 AR-1221-2
 R.T.: 5.295 min
 Delta R.T.: 0.002 min
 Response: 33897
 Conc: 48.20 ng/ml

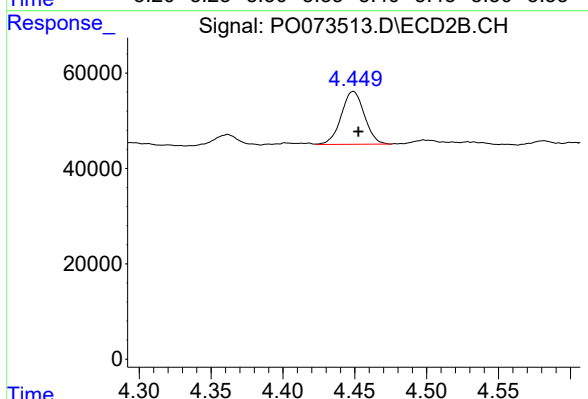
Instrument :
 ECD_O
 ClientSampleId :



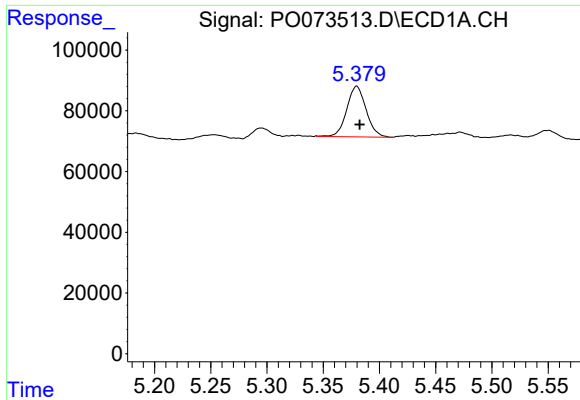
#9 AR-1221-2
 R.T.: 4.361 min
 Delta R.T.: -0.003 min
 Response: 23570
 Conc: 58.31 ng/ml



#10 AR-1221-3
 R.T.: 5.380 min
 Delta R.T.: -0.001 min
 Response: 199801
 Conc: 89.11 ng/ml

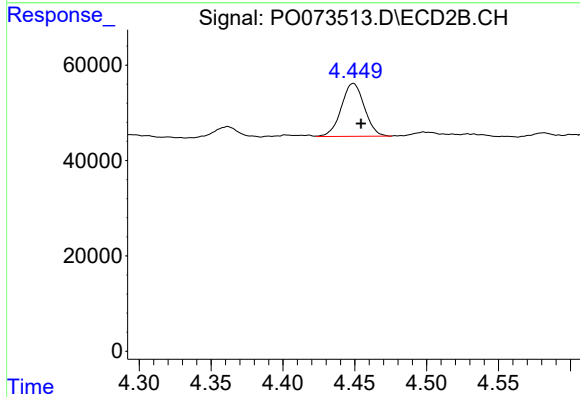


#10 AR-1221-3
 R.T.: 4.449 min
 Delta R.T.: -0.004 min
 Response: 124126
 Conc: 93.46 ng/ml

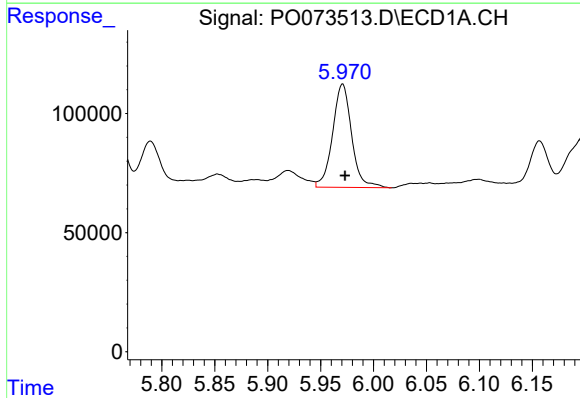


#11 AR-1232-1
 R.T.: 5.380 min
 Delta R.T.: -0.003 min
 Response: 199801
 Conc: 108.26 ng/ml

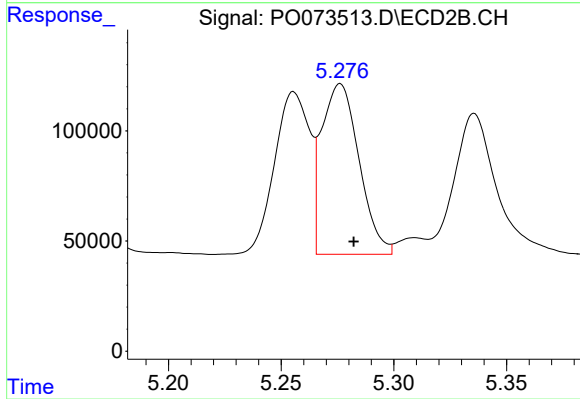
Instrument :
 ECD_O
 ClientSampleId :



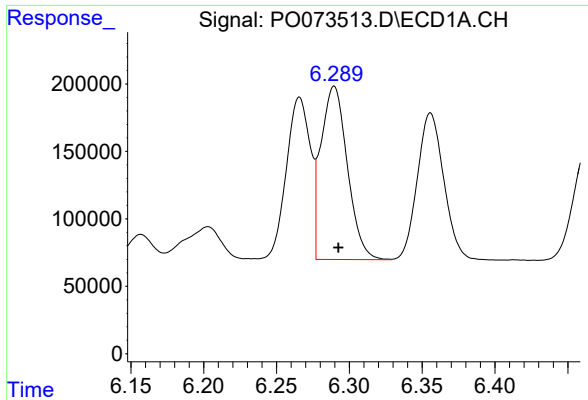
#11 AR-1232-1
 R.T.: 4.449 min
 Delta R.T.: -0.005 min
 Response: 124126
 Conc: 109.13 ng/ml



#12 AR-1232-2
 R.T.: 5.971 min
 Delta R.T.: -0.002 min
 Response: 542921
 Conc: 570.52 ng/ml



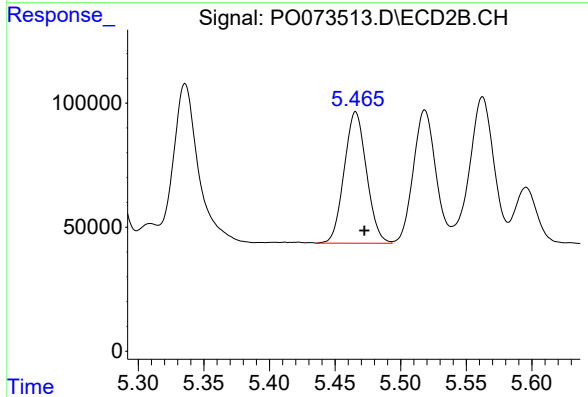
#12 AR-1232-2
 R.T.: 5.276 min
 Delta R.T.: -0.006 min
 Response: 893786
 Conc: 747.82 ng/ml



#13 AR-1232-3

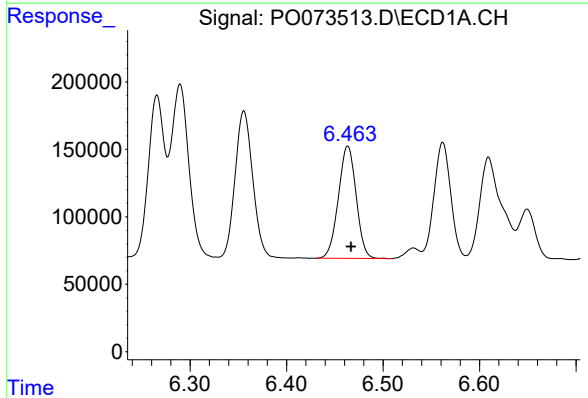
R.T.: 6.289 min
 Delta R.T.: -0.003 min
 Response: 1624222
 Conc: 830.32 ng/ml

Instrument :
 ECD_O
 ClientSampleId :



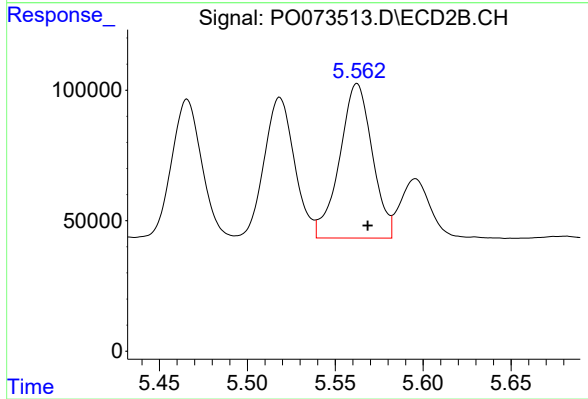
#13 AR-1232-3

R.T.: 5.466 min
 Delta R.T.: -0.007 min
 Response: 627856
 Conc: 1000.86 ng/ml



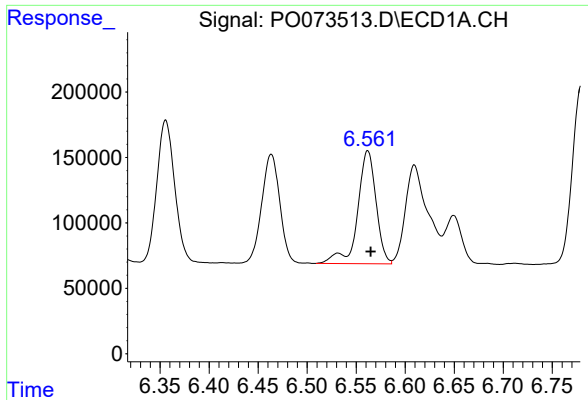
#14 AR-1232-4

R.T.: 6.463 min
 Delta R.T.: -0.004 min
 Response: 1068649
 Conc: 1080.85 ng/ml



#14 AR-1232-4

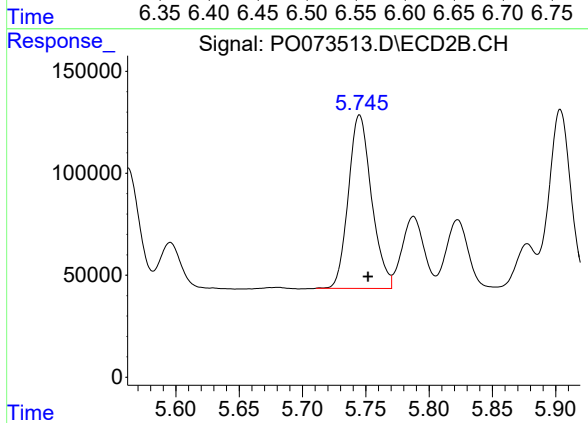
R.T.: 5.562 min
 Delta R.T.: -0.006 min
 Response: 764533
 Conc: 1418.08 ng/ml



#15 AR-1232-5

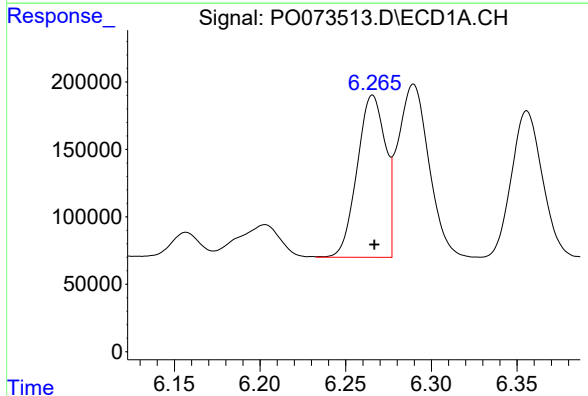
R.T.: 6.562 min
 Delta R.T.: -0.003 min
 Response: 1130326
 Conc: 1678.91 ng/ml

Instrument :
 ECD_O
 ClientSampleId :



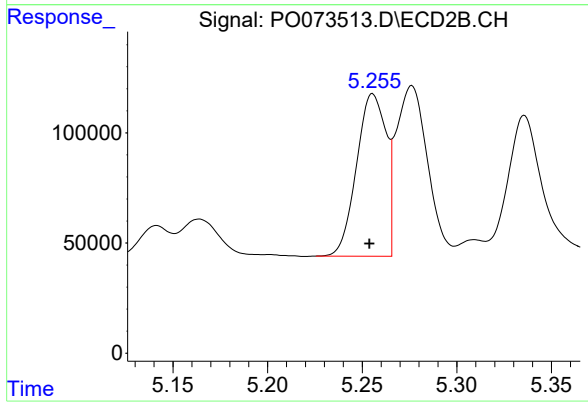
#15 AR-1232-5

R.T.: 5.745 min
 Delta R.T.: -0.007 min
 Response: 1082805
 Conc: 1832.85 ng/ml



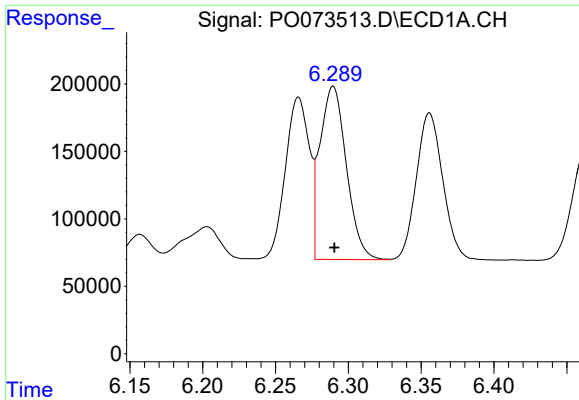
#16 AR-1242-1

R.T.: 6.266 min
 Delta R.T.: 0.000 min
 Response: 1379726
 Conc: 523.13 ng/ml



#16 AR-1242-1

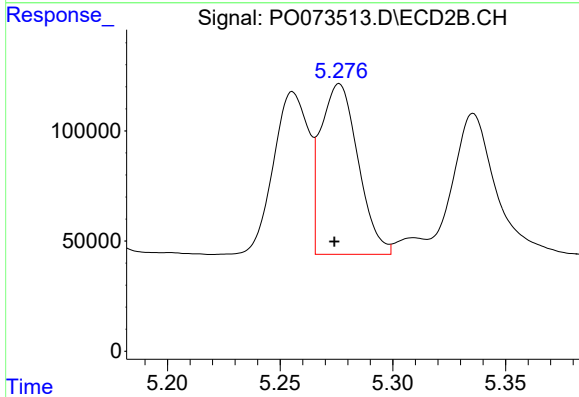
R.T.: 5.256 min
 Delta R.T.: 0.002 min
 Response: 800127
 Conc: 489.22 ng/ml



#17 AR-1242-2

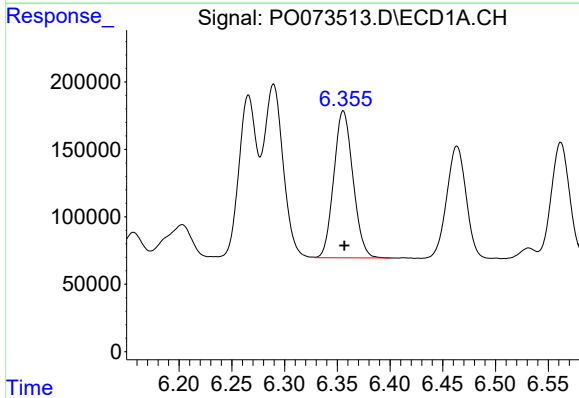
R.T.: 6.289 min
 Delta R.T.: -0.001 min
 Response: 1624222
 Conc: 444.33 ng/ml

Instrument :
 ECD_O
 ClientSampleId :



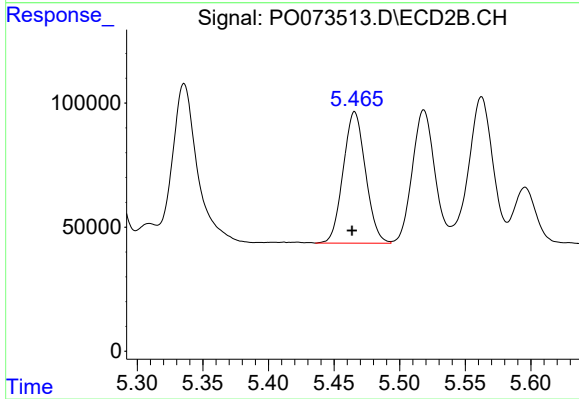
#17 AR-1242-2

R.T.: 5.276 min
 Delta R.T.: 0.002 min
 Response: 893786
 Conc: 395.16 ng/ml



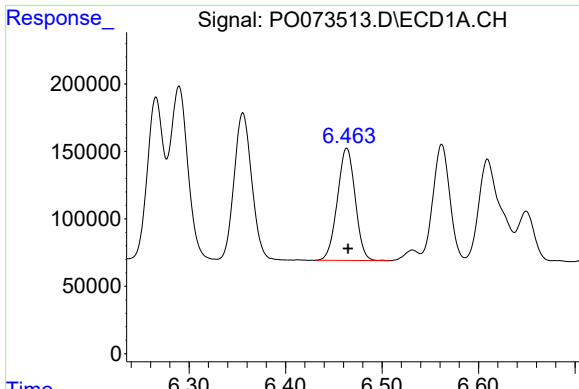
#18 AR-1242-3

R.T.: 6.356 min
 Delta R.T.: -0.001 min
 Response: 1377914
 Conc: 624.82 ng/ml



#18 AR-1242-3

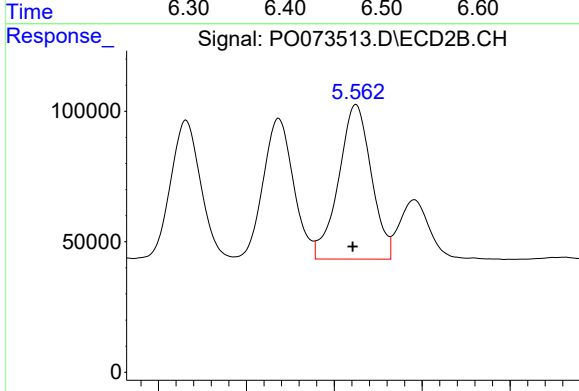
R.T.: 5.466 min
 Delta R.T.: 0.002 min
 Response: 627856
 Conc: 522.95 ng/ml



#19 AR-1242-4

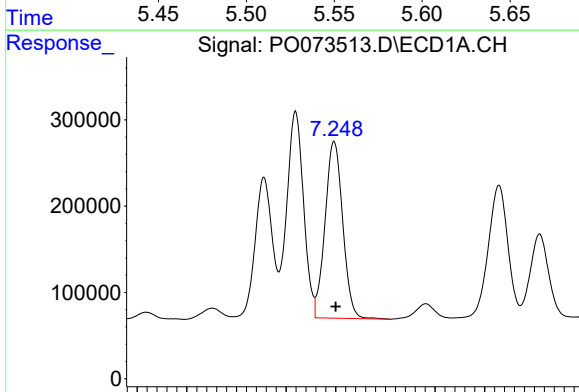
R.T.: 6.463 min
 Delta R.T.: -0.001 min
 Response: 1068649
 Conc: 575.73 ng/ml

Instrument :
 ECD_O
 ClientSampled :



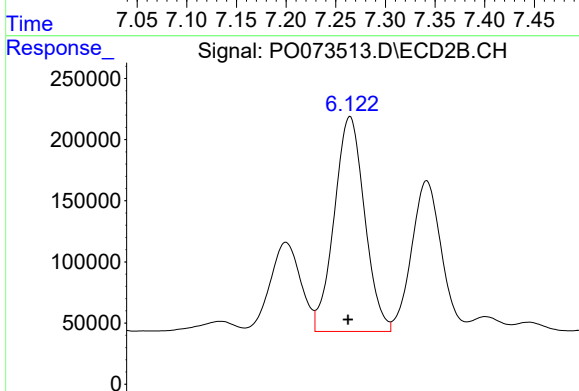
#19 AR-1242-4

R.T.: 5.562 min
 Delta R.T.: 0.002 min
 Response: 764533
 Conc: 695.60 ng/ml



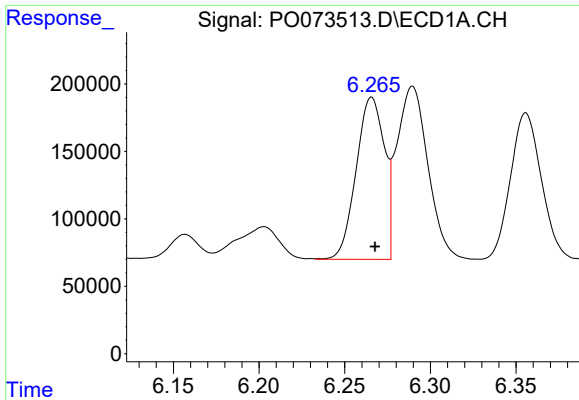
#20 AR-1242-5

R.T.: 7.248 min
 Delta R.T.: -0.002 min
 Response: 2536077
 Conc: 1205.73 ng/ml



#20 AR-1242-5

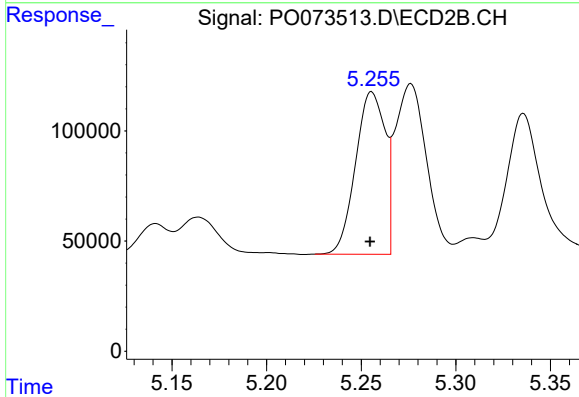
R.T.: 6.122 min
 Delta R.T.: 0.001 min
 Response: 2067466
 Conc: 1335.25 ng/ml



#21 AR-1248-1

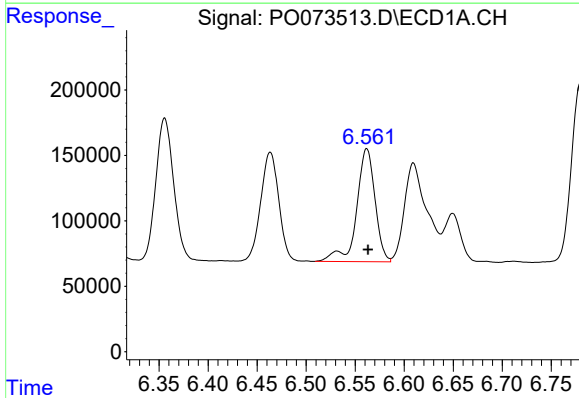
R.T.: 6.266 min
 Delta R.T.: -0.002 min
 Response: 1379726
 Conc: 690.17 ng/ml

Instrument :
 ECD_O
 ClientSampleId :



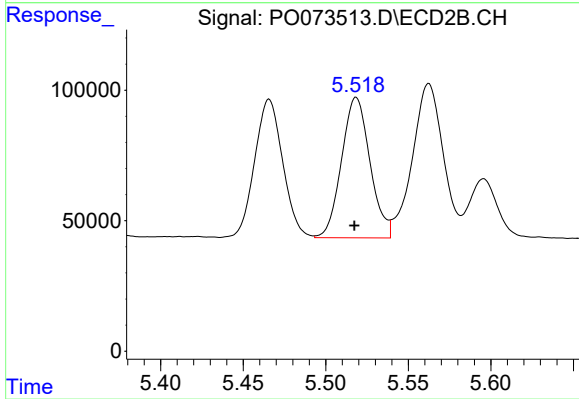
#21 AR-1248-1

R.T.: 5.256 min
 Delta R.T.: 0.000 min
 Response: 800127
 Conc: 638.02 ng/ml



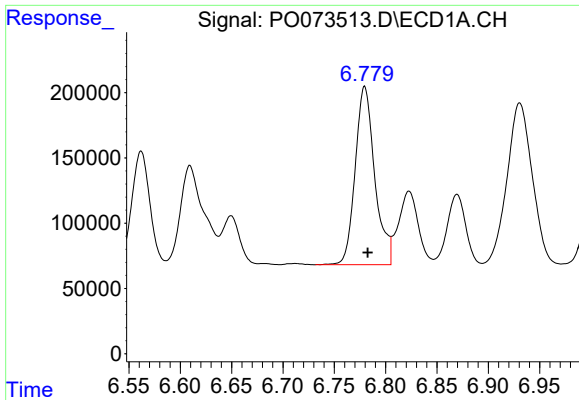
#22 AR-1248-2

R.T.: 6.562 min
 Delta R.T.: -0.001 min
 Response: 1130326
 Conc: 437.23 ng/ml



#22 AR-1248-2

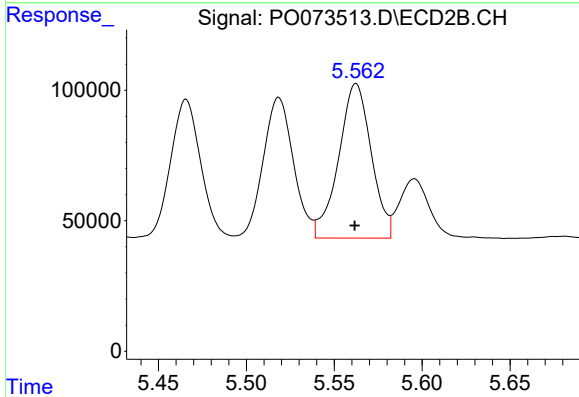
R.T.: 5.518 min
 Delta R.T.: 0.001 min
 Response: 645569
 Conc: 381.74 ng/ml



#23 AR-1248-3

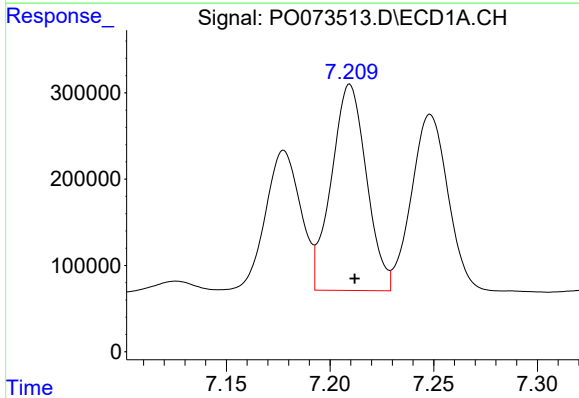
R.T.: 6.780 min
 Delta R.T.: -0.003 min
 Response: 1807859
 Conc: 589.92 ng/ml

Instrument :
 ECD_O
 ClientSampleId :



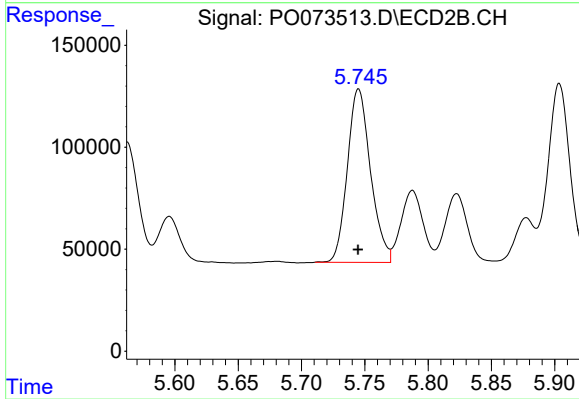
#23 AR-1248-3

R.T.: 5.562 min
 Delta R.T.: 0.000 min
 Response: 764533
 Conc: 448.02 ng/ml



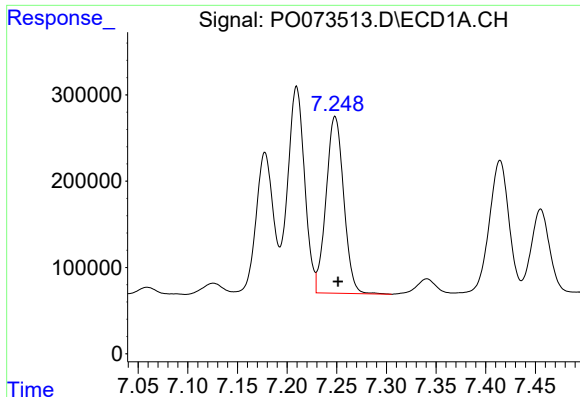
#24 AR-1248-4

R.T.: 7.210 min
 Delta R.T.: -0.002 min
 Response: 2813049
 Conc: 754.11 ng/ml



#24 AR-1248-4

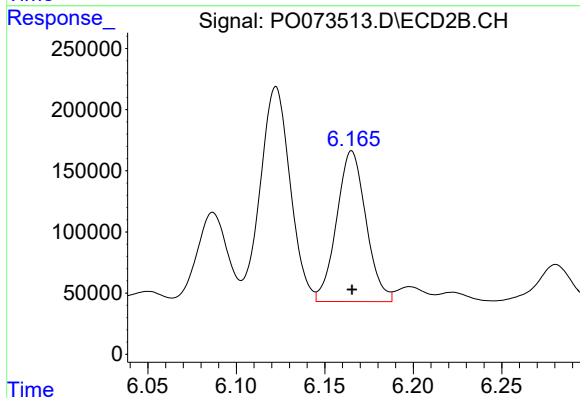
R.T.: 5.745 min
 Delta R.T.: 0.000 min
 Response: 1082805
 Conc: 526.74 ng/ml



#25 AR-1248-5

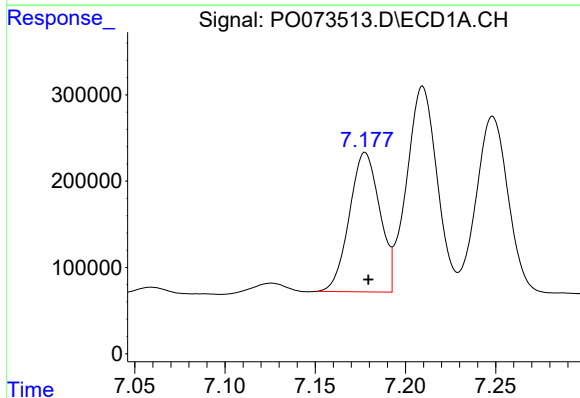
R.T.: 7.248 min
 Delta R.T.: -0.003 min
 Response: 2536077
 Conc: 708.81 ng/ml

Instrument :
 ECD_O
 ClientSampled :



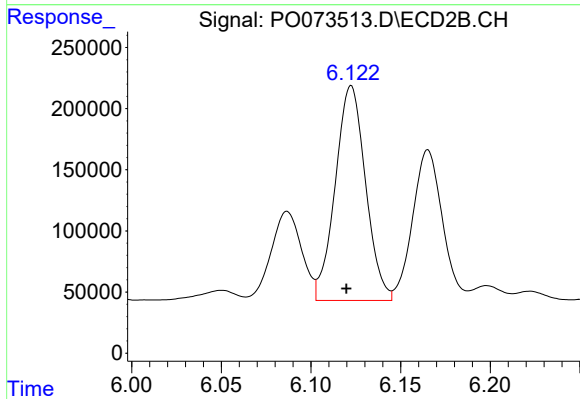
#25 AR-1248-5

R.T.: 6.165 min
 Delta R.T.: 0.000 min
 Response: 1424544
 Conc: 641.53 ng/ml



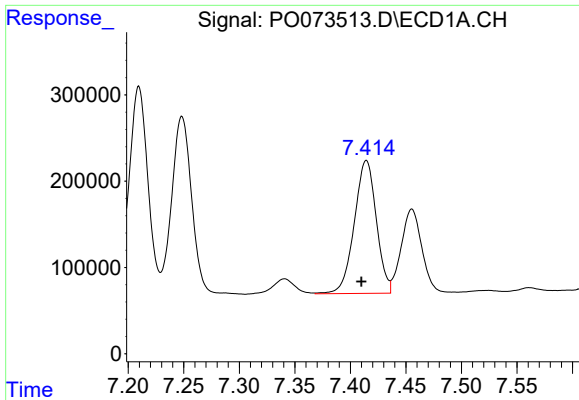
#26 AR-1254-1

R.T.: 7.178 min
 Delta R.T.: -0.002 min
 Response: 1895496
 Conc: 548.09 ng/ml



#26 AR-1254-1

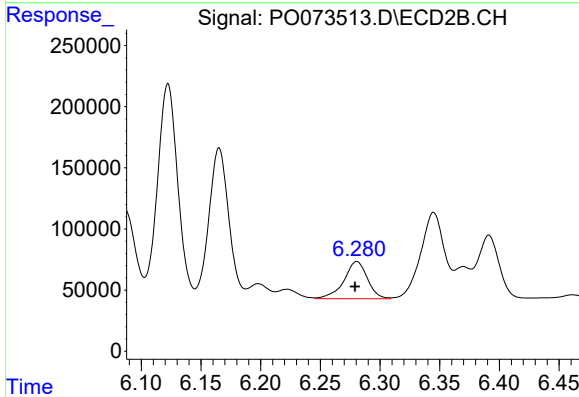
R.T.: 6.122 min
 Delta R.T.: 0.003 min
 Response: 2067466
 Conc: 663.97 ng/ml



#27 AR-1254-2

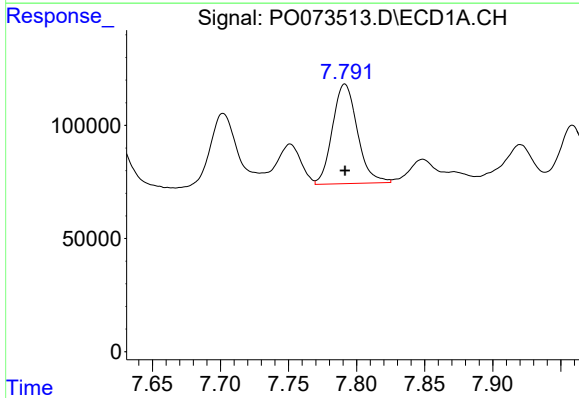
R.T.: 7.414 min
 Delta R.T.: 0.004 min
 Response: 2126479
 Conc: 390.33 ng/ml

Instrument :
 ECD_O
 ClientSampled :



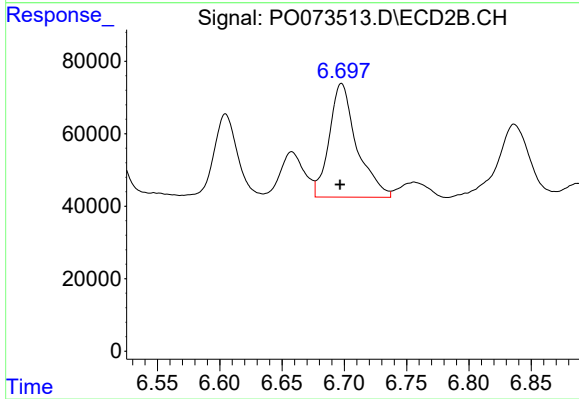
#27 AR-1254-2

R.T.: 6.281 min
 Delta R.T.: 0.002 min
 Response: 418036
 Conc: 153.13 ng/ml



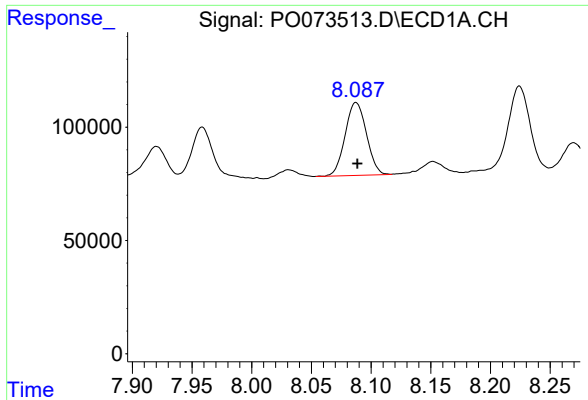
#28 AR-1254-3

R.T.: 7.791 min
 Delta R.T.: 0.000 min
 Response: 560718
 Conc: 98.94 ng/ml



#28 AR-1254-3

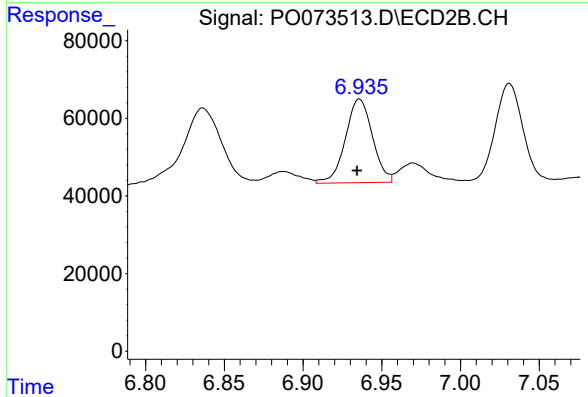
R.T.: 6.698 min
 Delta R.T.: 0.001 min
 Response: 481973
 Conc: 113.96 ng/ml



#29 AR-1254-4

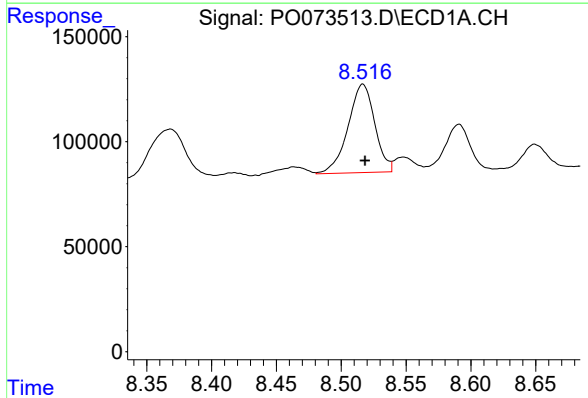
R.T.: 8.087 min
 Delta R.T.: -0.001 min
 Response: 401129
 Conc: 82.91 ng/ml

Instrument :
 ECD_O
 ClientSampleId :



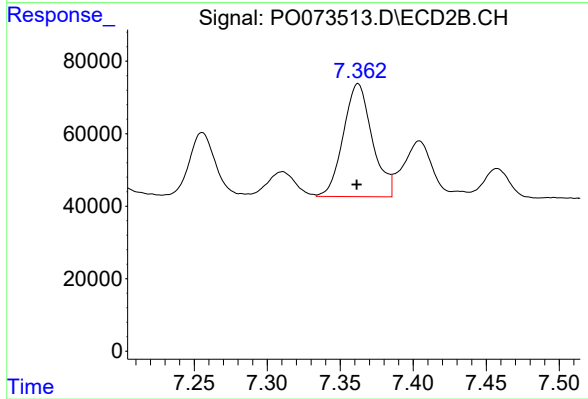
#29 AR-1254-4

R.T.: 6.936 min
 Delta R.T.: 0.001 min
 Response: 257429
 Conc: 89.17 ng/ml



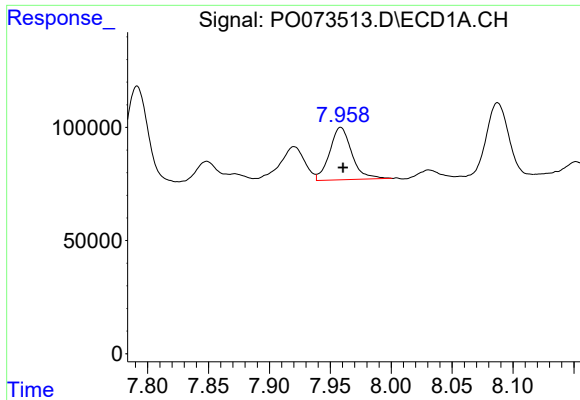
#30 AR-1254-5

R.T.: 8.517 min
 Delta R.T.: -0.002 min
 Response: 605108
 Conc: 127.11 ng/ml



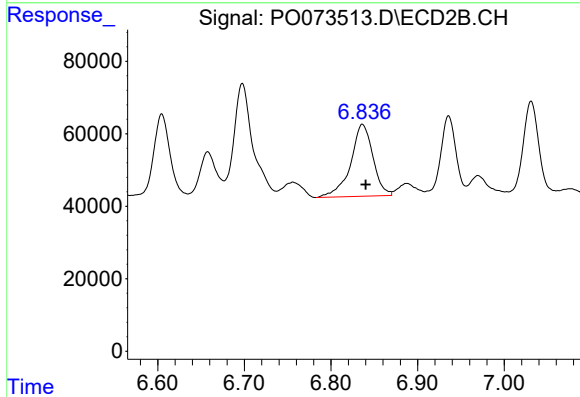
#30 AR-1254-5

R.T.: 7.362 min
 Delta R.T.: 0.001 min
 Response: 429834
 Conc: 116.39 ng/ml

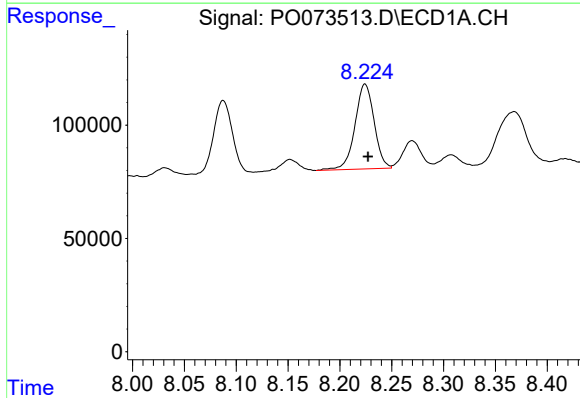


#31 AR-1260-1
 R.T.: 7.959 min
 Delta R.T.: -0.002 min
 Response: 296150
 Conc: 73.39 ng/ml

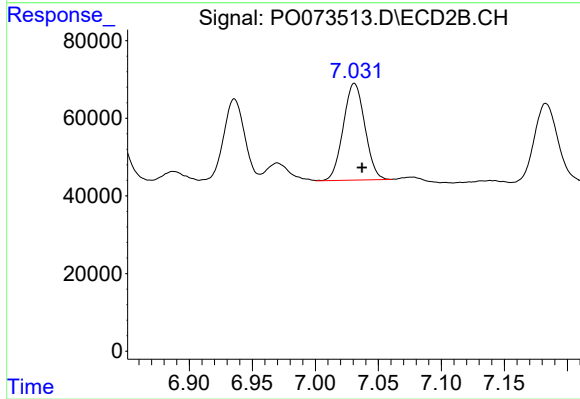
Instrument :
 ECD_O
 ClientSampleId :



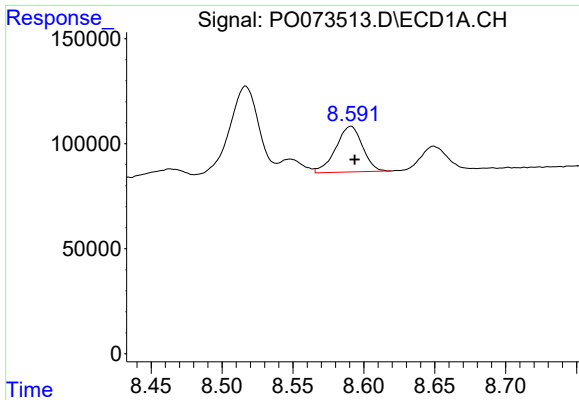
#31 AR-1260-1
 R.T.: 6.836 min
 Delta R.T.: -0.004 min
 Response: 354553
 Conc: 131.96 ng/ml



#32 AR-1260-2
 R.T.: 8.224 min
 Delta R.T.: -0.003 min
 Response: 482535
 Conc: 87.80 ng/ml



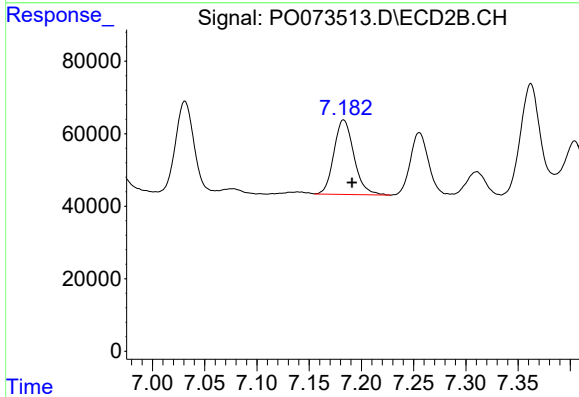
#32 AR-1260-2
 R.T.: 7.031 min
 Delta R.T.: -0.006 min
 Response: 296989
 Conc: 89.04 ng/ml



#33 AR-1260-3

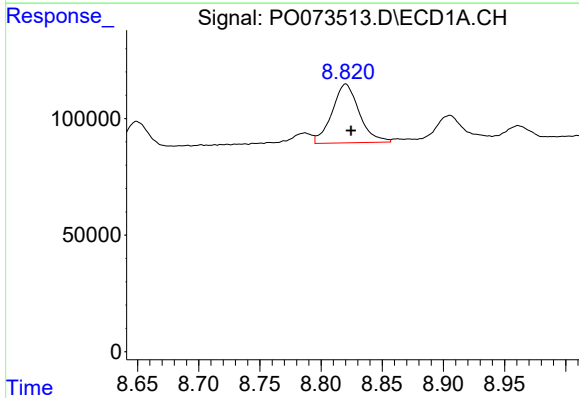
R.T.: 8.591 min
 Delta R.T.: -0.003 min
 Response: 285781
 Conc: 64.40 ng/ml

Instrument :
 ECD_O
 ClientSampleId :



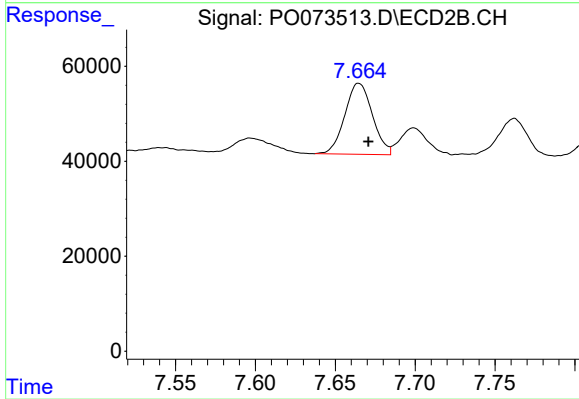
#33 AR-1260-3

R.T.: 7.183 min
 Delta R.T.: -0.008 min
 Response: 274639
 Conc: 88.90 ng/ml



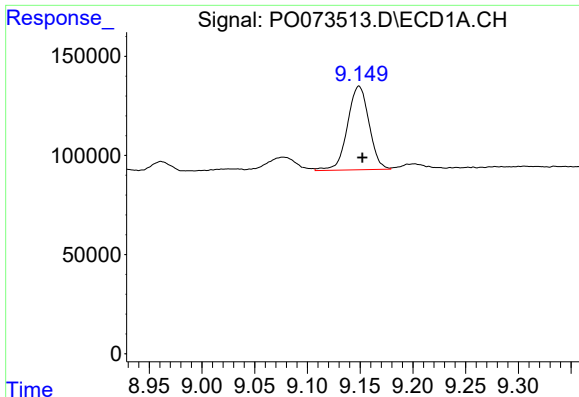
#34 AR-1260-4

R.T.: 8.820 min
 Delta R.T.: -0.004 min
 Response: 390367
 Conc: 90.44 ng/ml



#34 AR-1260-4

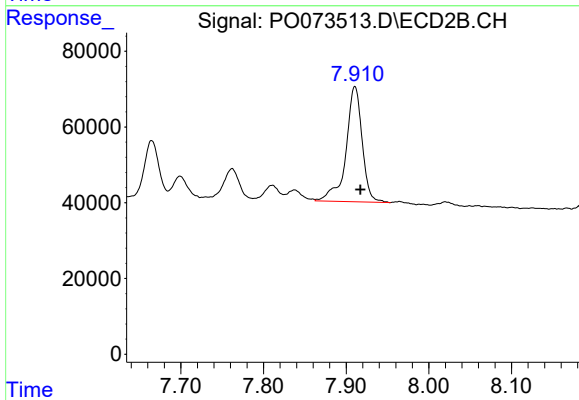
R.T.: 7.665 min
 Delta R.T.: -0.006 min
 Response: 180053
 Conc: 73.17 ng/ml



#35 AR-1260-5

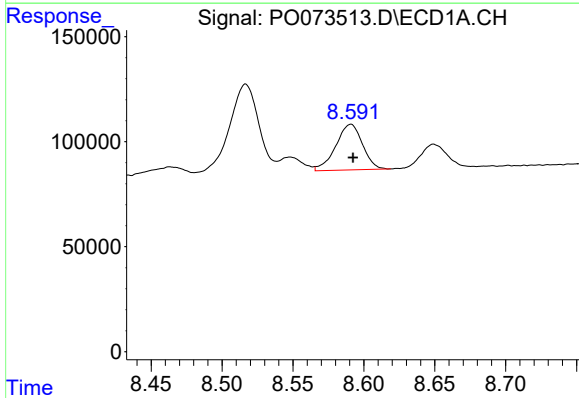
R.T.: 9.149 min
 Delta R.T.: -0.003 min
 Response: 599133
 Conc: 60.67 ng/ml

Instrument :
 ECD_O
 ClientSampleId :



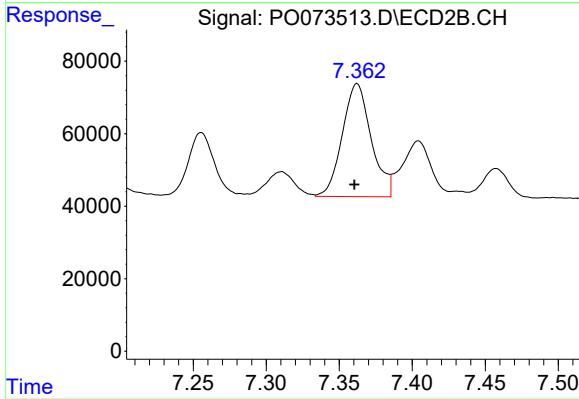
#35 AR-1260-5

R.T.: 7.911 min
 Delta R.T.: -0.007 min
 Response: 415115
 Conc: 67.01 ng/ml



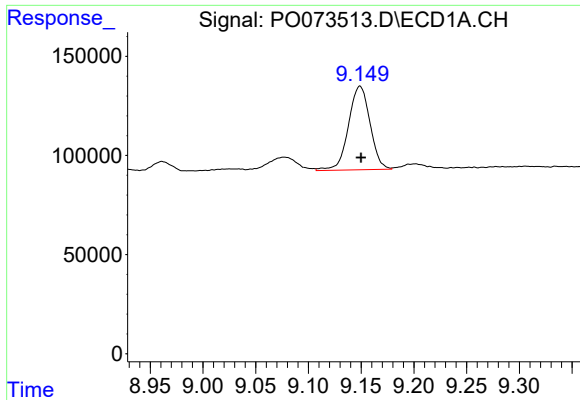
#36 AR-1262-1

R.T.: 8.591 min
 Delta R.T.: -0.002 min
 Response: 285781
 Conc: 45.77 ng/ml



#36 AR-1262-1

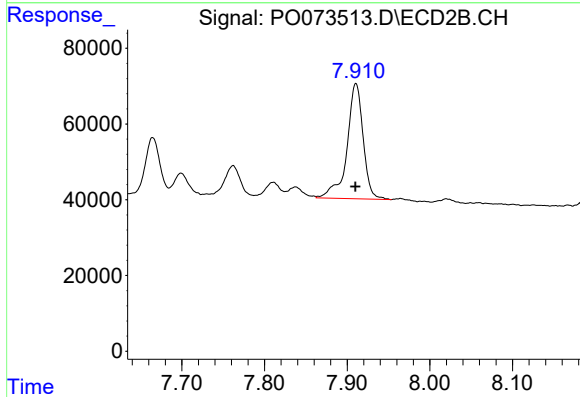
R.T.: 7.362 min
 Delta R.T.: 0.002 min
 Response: 429834
 Conc: 221.80 ng/ml



#37 AR-1262-2

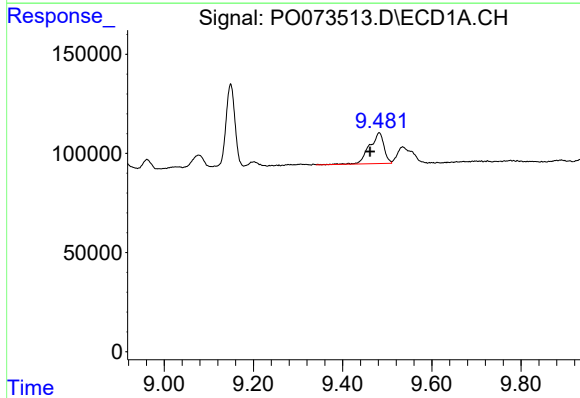
R.T.: 9.149 min
 Delta R.T.: -0.001 min
 Response: 599133
 Conc: 55.39 ng/ml

Instrument :
 ECD_O
 ClientSampleId :



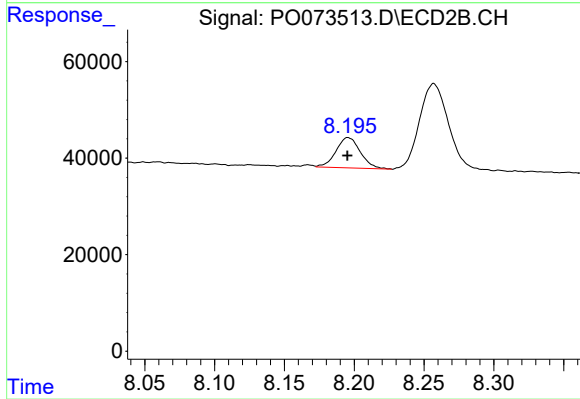
#37 AR-1262-2

R.T.: 7.911 min
 Delta R.T.: 0.000 min
 Response: 415115
 Conc: 63.31 ng/ml



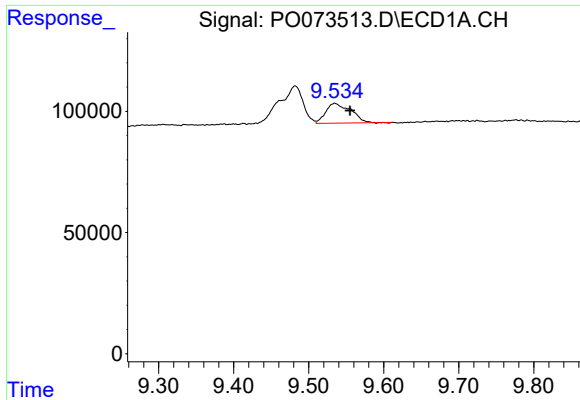
#38 AR-1262-3

R.T.: 9.482 min
 Delta R.T.: 0.020 min
 Response: 352273
 Conc: 47.99 ng/ml



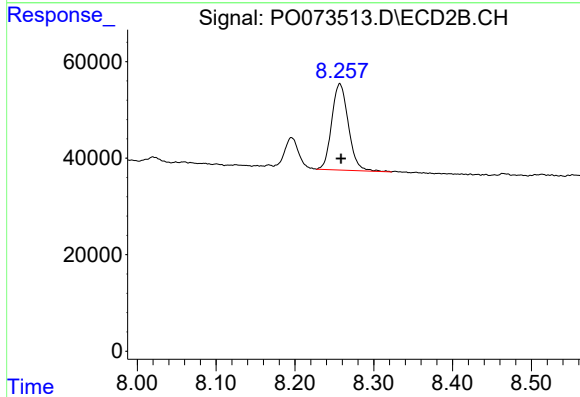
#38 AR-1262-3

R.T.: 8.196 min
 Delta R.T.: 0.000 min
 Response: 76113
 Conc: 28.21 ng/ml

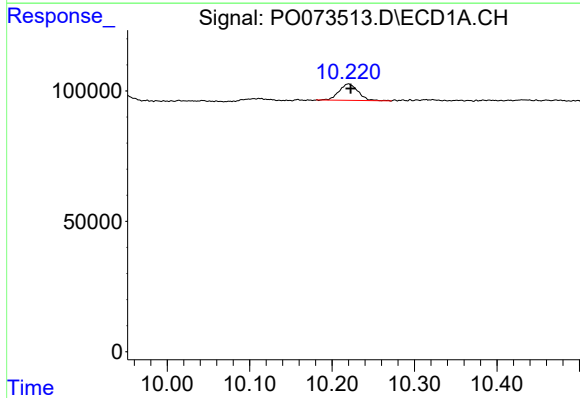


#39 AR-1262-4
 R.T.: 9.535 min
 Delta R.T.: -0.021 min
 Response: 189047
 Conc: 34.35 ng/ml

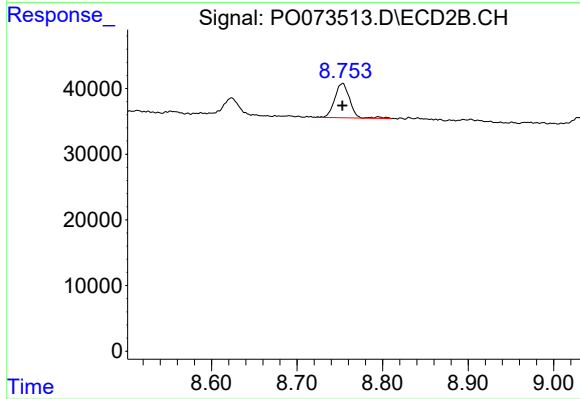
Instrument :
 ECD_O
 ClientSampled :



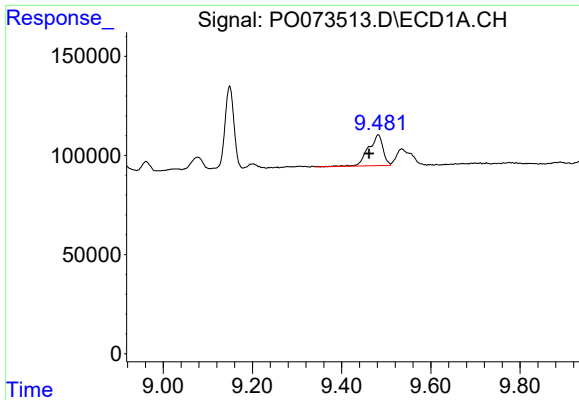
#39 AR-1262-4
 R.T.: 8.257 min
 Delta R.T.: -0.002 min
 Response: 261744
 Conc: 54.82 ng/ml



#40 AR-1262-5
 R.T.: 10.220 min
 Delta R.T.: -0.003 min
 Response: 101798
 Conc: 26.15 ng/ml



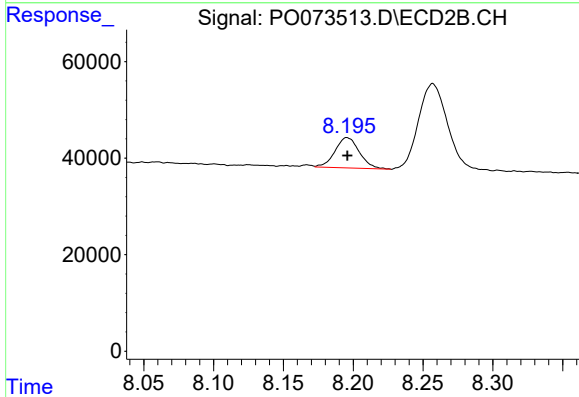
#40 AR-1262-5
 R.T.: 8.753 min
 Delta R.T.: 0.000 min
 Response: 64036
 Conc: 28.00 ng/ml



#41 AR-1268-1

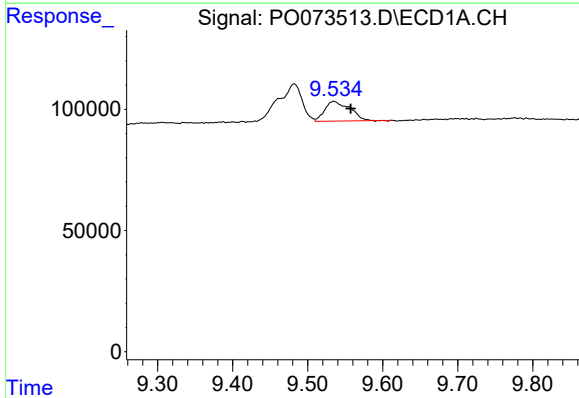
R.T.: 9.482 min
 Delta R.T.: 0.020 min
 Response: 352273
 Conc: 25.22 ng/ml

Instrument :
 ECD_O
 ClientSampled :



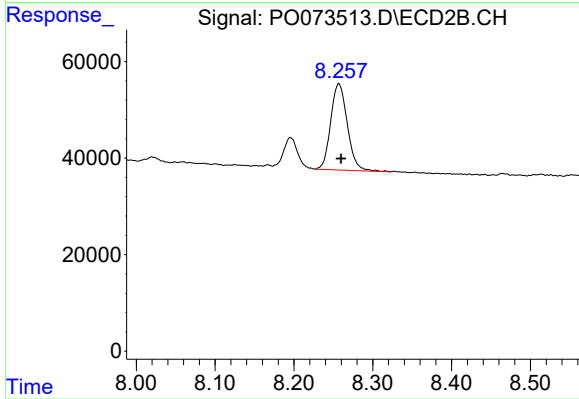
#41 AR-1268-1

R.T.: 8.196 min
 Delta R.T.: 0.000 min
 Response: 76113
 Conc: 9.34 ng/ml



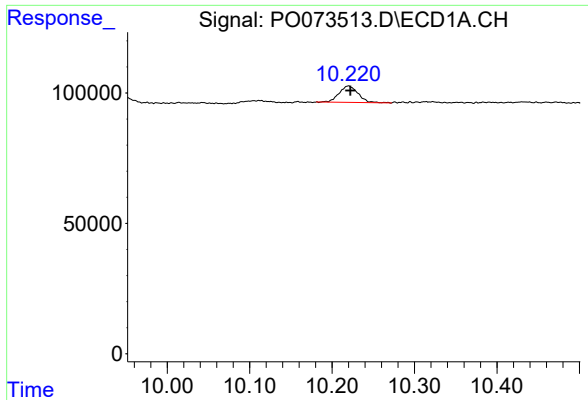
#42 AR-1268-2

R.T.: 9.535 min
 Delta R.T.: -0.023 min
 Response: 189047
 Conc: 15.56 ng/ml



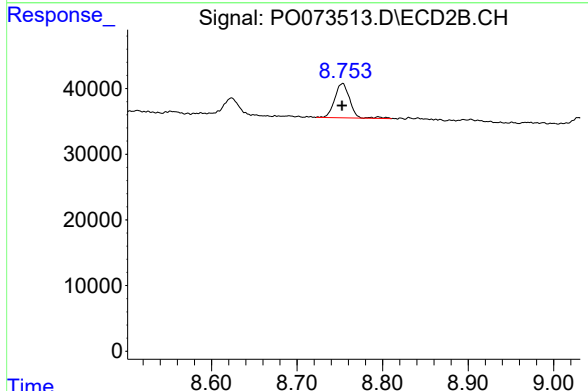
#42 AR-1268-2

R.T.: 8.257 min
 Delta R.T.: -0.003 min
 Response: 261744
 Conc: 35.84 ng/ml

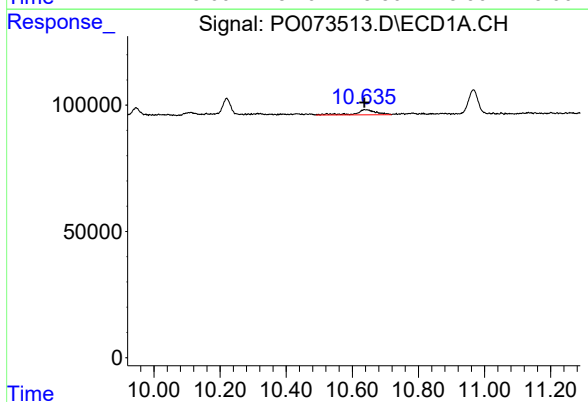


#44 AR-1268-4
 R.T.: 10.220 min
 Delta R.T.: -0.003 min
 Response: 101798
 Conc: 22.57 ng/ml

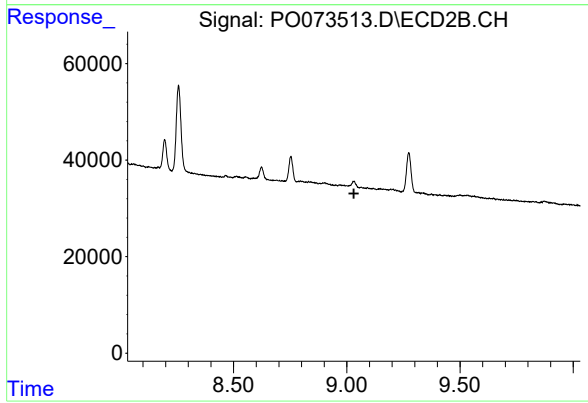
Instrument :
 ECD_O
 ClientSampleId :



#44 AR-1268-4
 R.T.: 8.753 min
 Delta R.T.: 0.000 min
 Response: 64036
 Conc: 23.91 ng/ml



#45 AR-1268-5
 R.T.: 10.638 min
 Delta R.T.: 0.002 min
 Response: 87624
 Conc: 2.75 ng/ml



#45 AR-1268-5
 R.T.: 0.000 min
 Exp R.T. : 9.031 min
 Response: 0
 Conc: N.D.