

Data Path : Z:\pestpcbsrv\HPCHEM1\ECD_0\Data\PO112420\
 Data File : PO073514.D
 Signal(s) : Signal #1: ECD1A.CH Signal #2: ECD2B.CH
 Acq On : 24 Nov 2020 14:56
 Operator : DD\AJ
 Sample : L4836-09
 Misc :
 ALS Vial : 16 Sample Multiplier: 1

Instrument :
 ECD_0
 ClientSampled :

Integration File signal 1: autoint1.e
 Integration File signal 2: autoint2.e
 Quant Time: Nov 25 10:32:25 2020
 Quant Method : Z:\pestpcbsrv\HPCHEM1\ECD_0\methods\PO112320.M
 Quant Title : GC EXTRACTABLES
 QLast Update : Wed Nov 25 10:04:26 2020
 Response via : Initial Calibration
 Integrator: ChemStation 6890 Scale Mode: Small noise peaks clipped

Volume Inj. : 2 µl
 Signal #1 Phase : ZB-MR1 Signal #2 Phase: ZB-MR2
 Signal #1 Info : 30Mx0.32mmx 0.50µ Signal #2 Info : 30M x 0.32mm x 0.25µm

Compound	RT#1	RT#2	Resp#1	Resp#2	ng/ml	ng/ml
System Monitoring Compounds						
1) SA Tetrachlo...	4.943	4.008	1518892	1021529	18.158	20.836
2) SA Decachlor...	10.968	9.274	1500076	1123118	18.194	24.495 #
Target Compounds						
3) L1 AR-1016-1	6.265	5.278f	23565	28564	7.156	14.021 #
4) L1 AR-1016-2	6.290	5.278	35238	28564	7.655	10.213 #
5) L1 AR-1016-3	6.357	5.466	30418	11805	11.109	7.938 #
6) L1 AR-1016-4	0.000	5.518	0	28930	N.D.	24.342 #
7) L1 AR-1016-5	6.778	5.741	53385	39245	23.744	26.071
8) L2 AR-1221-1	5.195	4.292f	323657	470781	326.284	835.284 #
9) L2 AR-1221-2	0.000	4.369	0	421209	N.D.	1041.988 #
10) L2 AR-1221-3	5.407f	0.000	939879	0	419.195	N.D. #
11) L3 AR-1232-1	5.407f	0.000	939879	0	509.287	N.D. #
12) L3 AR-1232-2	0.000	5.278	0	28564	N.D.	23.899 #
13) L3 AR-1232-3	6.290	5.466	35238	11805	18.014	18.818
15) L3 AR-1232-5	6.557	5.741	80788	39245	119.998	66.430 #
16) L4 AR-1242-1	6.265	5.278f	23565	28564	8.935	17.465 #
17) L4 AR-1242-2	6.290	5.278	35238	28564	9.640	12.629 #
18) L4 AR-1242-3	6.357	5.466	30418	11805	13.793	9.832 #
20) L4 AR-1242-5	7.249	6.124	153194	133300	72.833	86.090
21) L5 AR-1248-1	6.265	5.278f	23565	28564	11.788	22.777 #
22) L5 AR-1248-2	6.557	5.518	80788	28930	31.250	17.107 #
23) L5 AR-1248-3	6.778	0.000	53385	0	17.420	N.D. #
24) L5 AR-1248-4	7.182f	5.741	295136	39245	79.119	19.091 #
25) L5 AR-1248-5	7.249	6.167	153194	60423	42.816	27.211 #
26) L6 AR-1254-1	7.182	6.124	295136	133300	85.340	42.809 #
27) L6 AR-1254-2	7.412	6.280	326221	78787	59.879	28.860 #
28) L6 AR-1254-3	7.793	6.698	312146	181988	55.079	43.031
29) L6 AR-1254-4	8.087	6.937	167829	96127	34.689	33.296
30) L6 AR-1254-5	8.517	7.363	297690	174647	62.535	47.289
31) L7 AR-1260-1	7.958	6.835	116183	110808	28.792	41.242 #
32) L7 AR-1260-2	8.224	7.031	454833	98518	82.759	29.536 #
33) L7 AR-1260-3	8.591	7.184	134508	91226	30.311	29.531
34) L7 AR-1260-4	8.818	7.665	280917	62999	65.085	25.601 #
35) L7 AR-1260-5	9.148	7.912	257324	188749	26.058	30.468
36) L8 AR-1262-1	8.591	7.363	134508	174647	21.544	90.120 #
37) L8 AR-1262-2	9.148	7.912	257324	188749	23.788	28.788
38) L8 AR-1262-3	9.471	8.198	472930	117182	64.432	43.430 #
39) L8 AR-1262-4	9.557	8.269	67756	205112	12.312	42.958 #
40) L8 AR-1262-5	10.219	8.757	60094	59706	15.439	26.105 #
41) L9 AR-1268-1	9.471	8.198	472930	117182	33.857	14.385 #
42) L9 AR-1268-2	9.557	8.269	67756	205112	5.577	28.083 #
44) L9 AR-1268-4	10.219	8.757	60094	59706	13.321	22.290 #

Data Path : Z:\pestpcbsrv\HPCHEM1\ECD_0\Data\PO112420\
 Data File : PO073514.D
 Signal(s) : Signal #1: ECD1A.CH Signal #2: ECD2B.CH
 Acq On : 24 Nov 2020 14:56
 Operator : DD\AJ
 Sample : L4836-09
 Misc :
 ALS Vial : 16 Sample Multiplier: 1

Instrument :
 ECD_0
 ClientSampleId :

Integration File signal 1: autoint1.e
 Integration File signal 2: autoint2.e
 Quant Time: Nov 25 10:32:25 2020
 Quant Method : Z:\pestpcbsrv\HPCHEM1\ECD_0\methods\PO112320.M
 Quant Title : GC EXTRACTABLES
 QLast Update : Wed Nov 25 10:04:26 2020
 Response via : Initial Calibration
 Integrator: ChemStation 6890 Scale Mode: Small noise peaks clipped

Volume Inj. : 2 µl
 Signal #1 Phase : ZB-MR1 Signal #2 Phase: ZB-MR2
 Signal #1 Info : 30Mx0.32mmx 0.50µ Signal #2 Info : 30M x 0.32mm x 0.25µm

	Compound	RT#1	RT#2	Resp#1	Resp#2	ng/ml	ng/ml
45)	L9 AR-1268-5	10.660f	9.011f	414414	119368	13.020	6.544 #

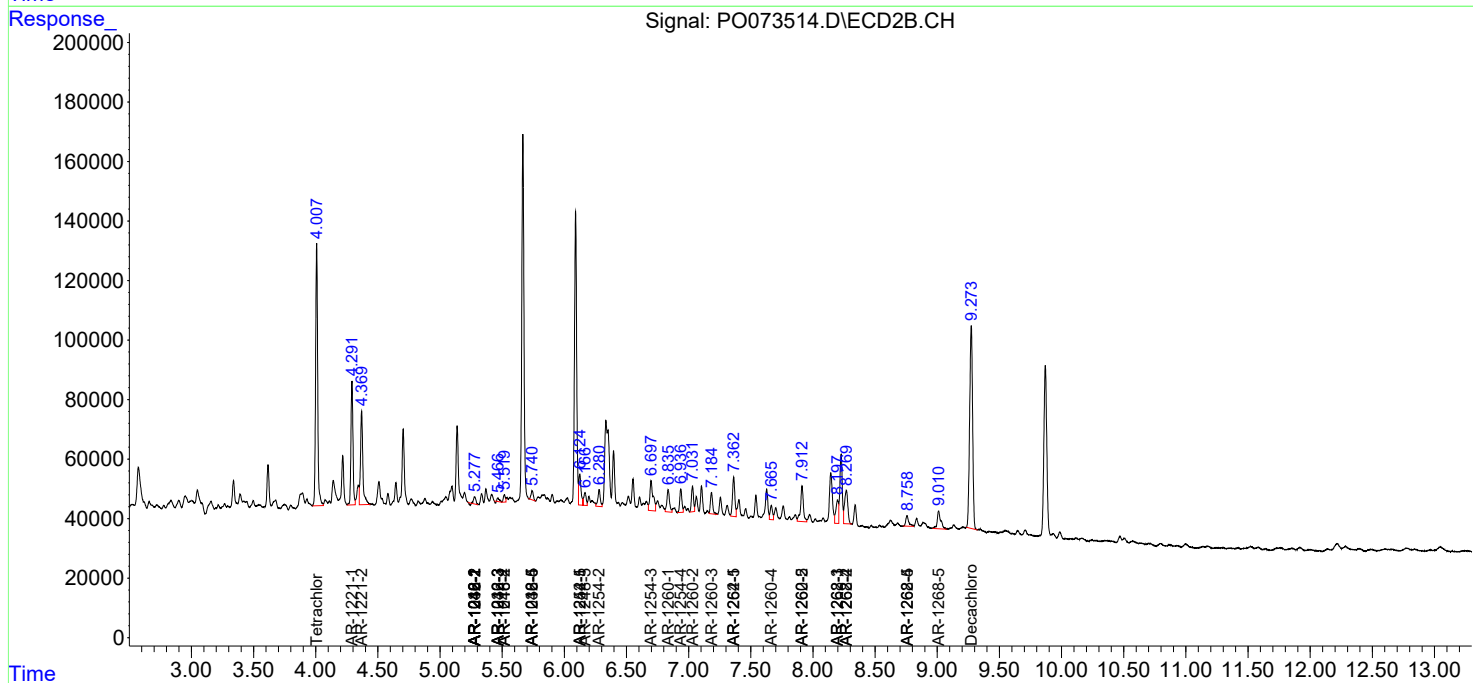
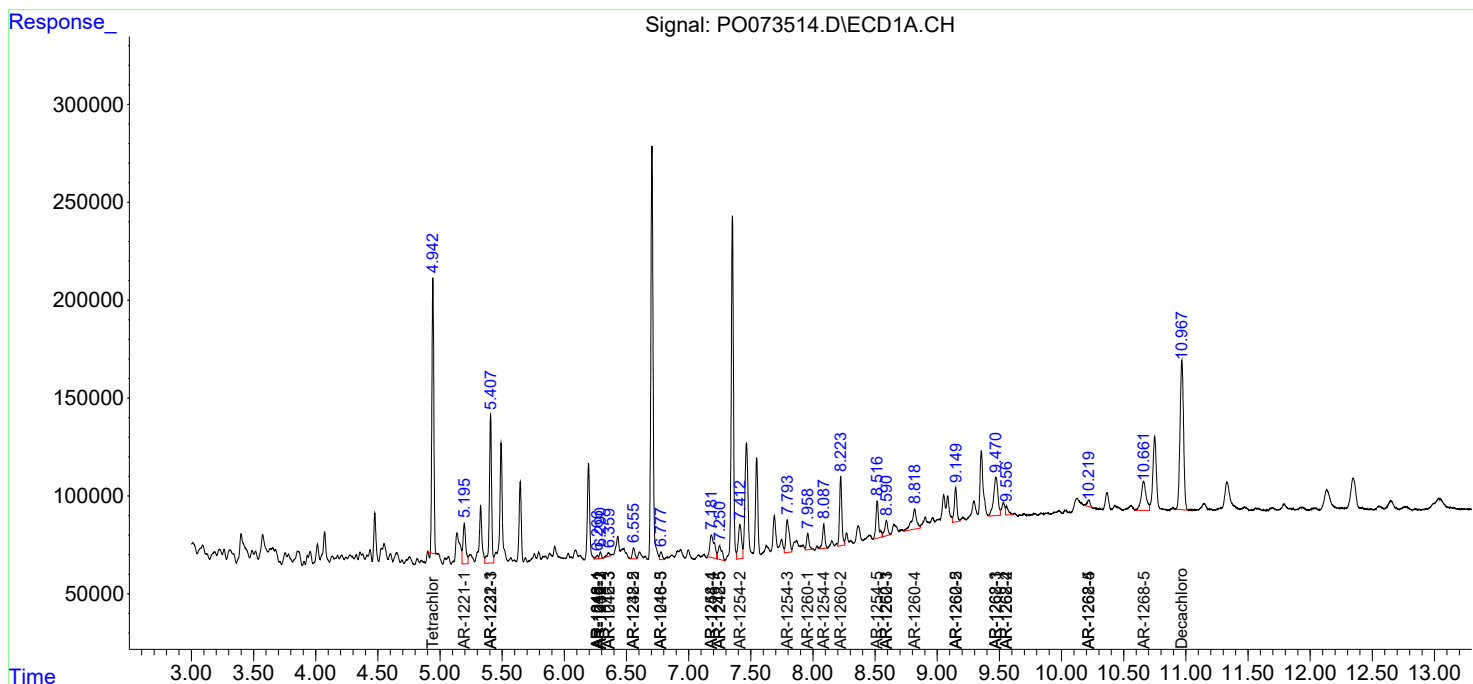
(f)=RT Delta > 1/2 Window (#)=Amounts differ by > 25% (m)=manual int.

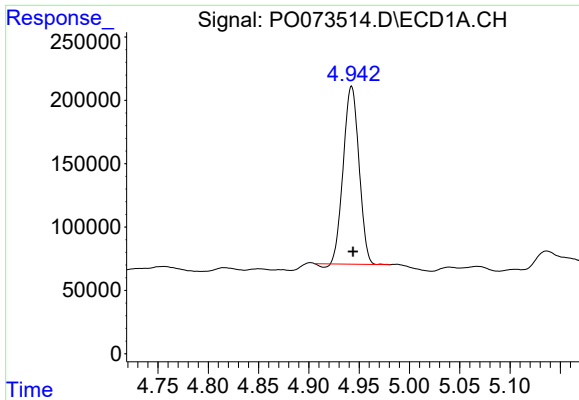
Data Path : Z:\pestpcbsrv\HPCHEM1\ECD_0\Data\PO112420\
 Data File : PO073514.D
 Signal(s) : Signal #1: ECD1A.CH Signal #2: ECD2B.CH
 Acq On : 24 Nov 2020 14:56
 Operator : DD\AJ
 Sample : L4836-09
 Misc :
 ALS Vial : 16 Sample Multiplier: 1

Instrument :
 ECD_O
 ClientSampled :

Integration File signal 1: autoint1.e
 Integration File signal 2: autoint2.e
 Quant Time: Nov 25 10:32:25 2020
 Quant Method : Z:\pestpcbsrv\HPCHEM1\ECD_0\methods\PO112320.M
 Quant Title : GC EXTRACTABLES
 QLast Update : Wed Nov 25 10:04:26 2020
 Response via : Initial Calibration
 Integrator: ChemStation 6890 Scale Mode: Small noise peaks clipped

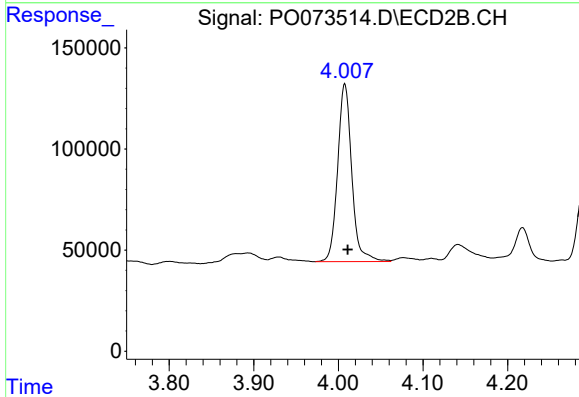
Volume Inj. : 2 µl
 Signal #1 Phase : ZB-MR1 Signal #2 Phase: ZB-MR2
 Signal #1 Info : 30Mx0.32mmx 0.50µ Signal #2 Info : 30M x 0.32mm x 0.25µm



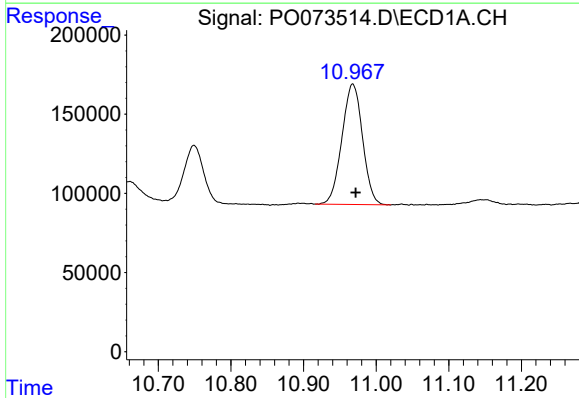


#1 Tetrachloro-m-xylene
 R.T.: 4.943 min
 Delta R.T.: -0.001 min
 Response: 1518892
 Conc: 18.16 ng/ml

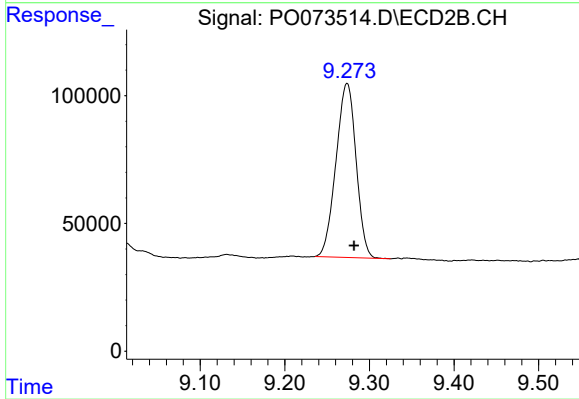
Instrument :
 ECD_O
 ClientSampled :



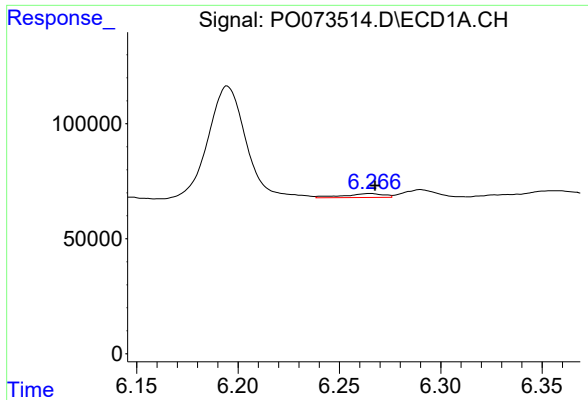
#1 Tetrachloro-m-xylene
 R.T.: 4.008 min
 Delta R.T.: -0.003 min
 Response: 1021529
 Conc: 20.84 ng/ml



#2 Decachlorobiphenyl
 R.T.: 10.968 min
 Delta R.T.: -0.004 min
 Response: 1500076
 Conc: 18.19 ng/ml



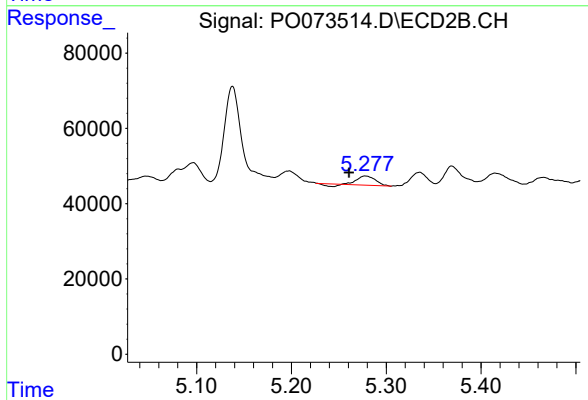
#2 Decachlorobiphenyl
 R.T.: 9.274 min
 Delta R.T.: -0.008 min
 Response: 1123118
 Conc: 24.50 ng/ml



#3 AR-1016-1

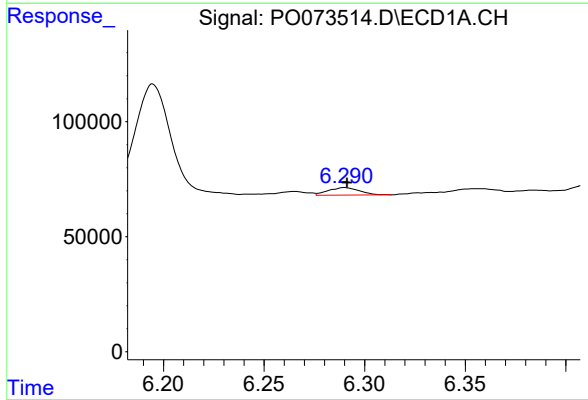
R.T.: 6.265 min
 Delta R.T.: -0.002 min
 Response: 23565
 Conc: 7.16 ng/ml

Instrument :
 ECD_O
 ClientSampled :



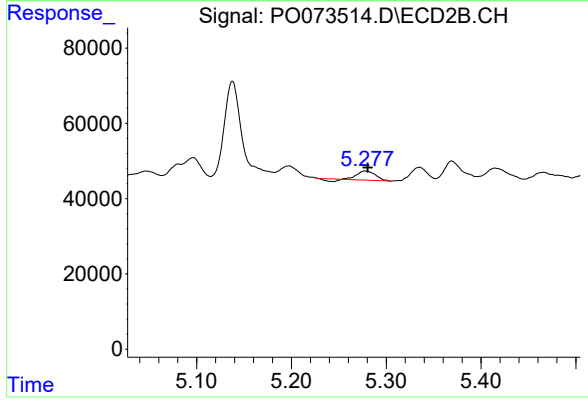
#3 AR-1016-1

R.T.: 5.278 min
 Delta R.T.: 0.018 min
 Response: 28564
 Conc: 14.02 ng/ml



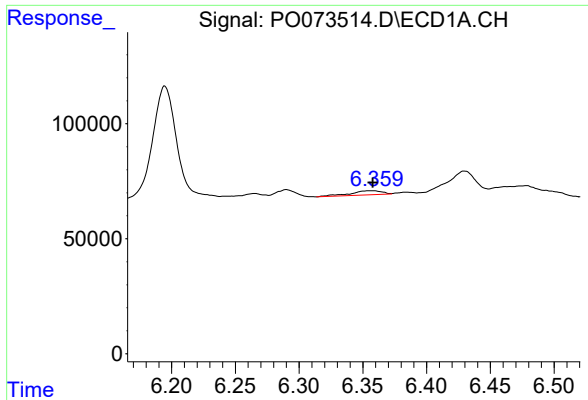
#4 AR-1016-2

R.T.: 6.290 min
 Delta R.T.: -0.001 min
 Response: 35238
 Conc: 7.65 ng/ml



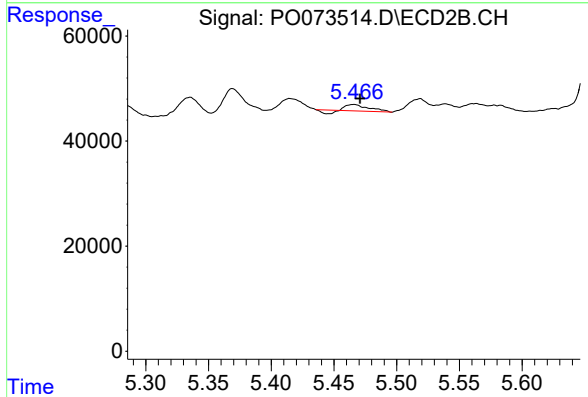
#4 AR-1016-2

R.T.: 5.278 min
 Delta R.T.: -0.002 min
 Response: 28564
 Conc: 10.21 ng/ml

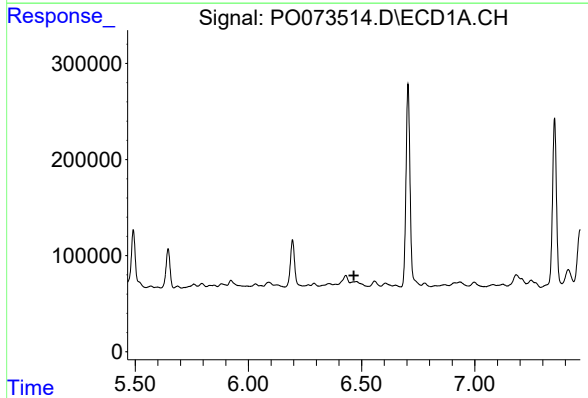


#5 AR-1016-3
 R.T.: 6.357 min
 Delta R.T.: 0.000 min
 Response: 30418
 Conc: 11.11 ng/ml

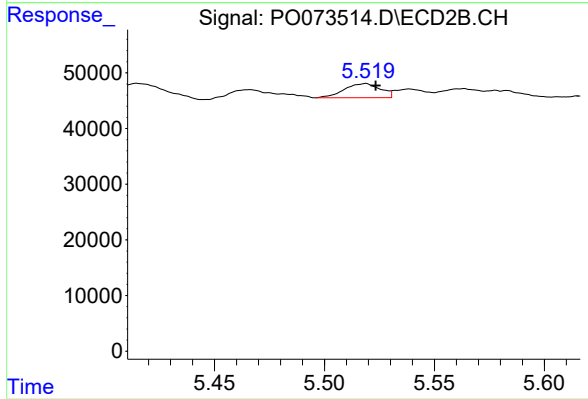
Instrument :
 ECD_O
 ClientSampled :



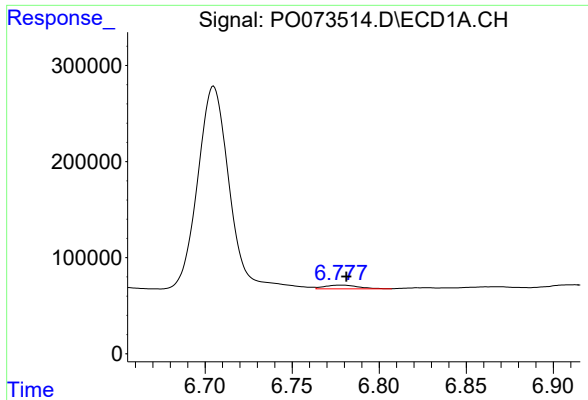
#5 AR-1016-3
 R.T.: 5.466 min
 Delta R.T.: -0.005 min
 Response: 11805
 Conc: 7.94 ng/ml



#6 AR-1016-4
 R.T.: 0.000 min
 Exp R.T. : 6.466 min
 Response: 0
 Conc: N.D.

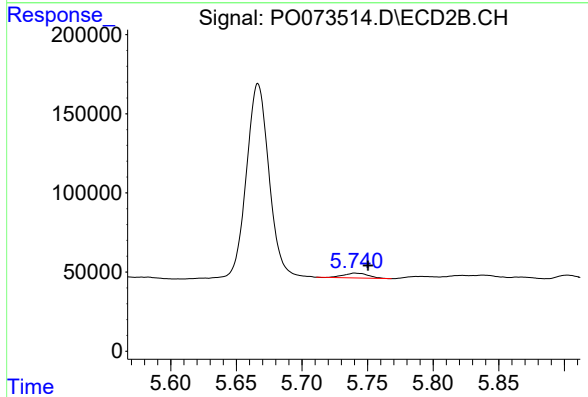


#6 AR-1016-4
 R.T.: 5.518 min
 Delta R.T.: -0.005 min
 Response: 28930
 Conc: 24.34 ng/ml

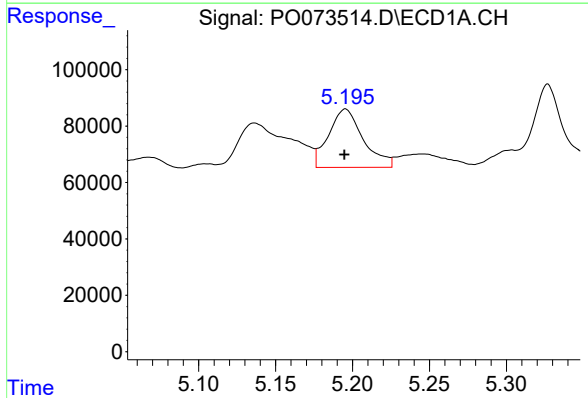


#7 AR-1016-5
 R.T.: 6.778 min
 Delta R.T.: -0.003 min
 Response: 53385
 Conc: 23.74 ng/ml

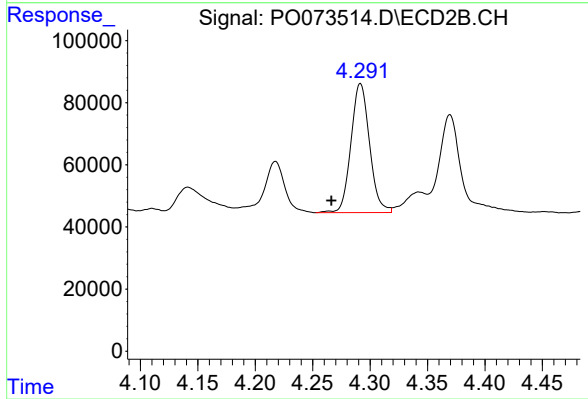
Instrument :
 ECD_O
 ClientSampled :



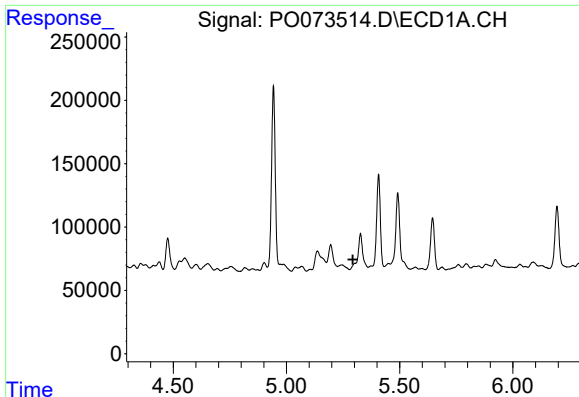
#7 AR-1016-5
 R.T.: 5.741 min
 Delta R.T.: -0.010 min
 Response: 39245
 Conc: 26.07 ng/ml



#8 AR-1221-1
 R.T.: 5.195 min
 Delta R.T.: 0.000 min
 Response: 323657
 Conc: 326.28 ng/ml



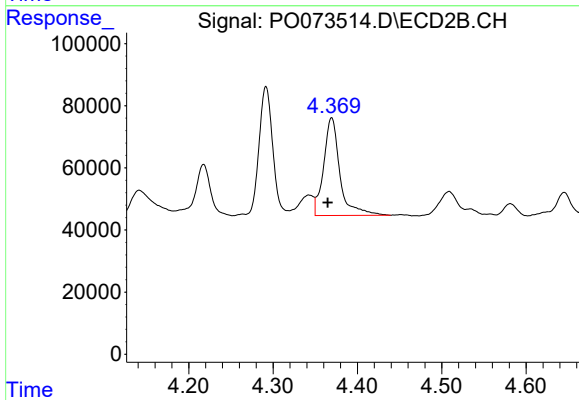
#8 AR-1221-1
 R.T.: 4.292 min
 Delta R.T.: 0.025 min
 Response: 470781
 Conc: 835.28 ng/ml



#9 AR-1221-2

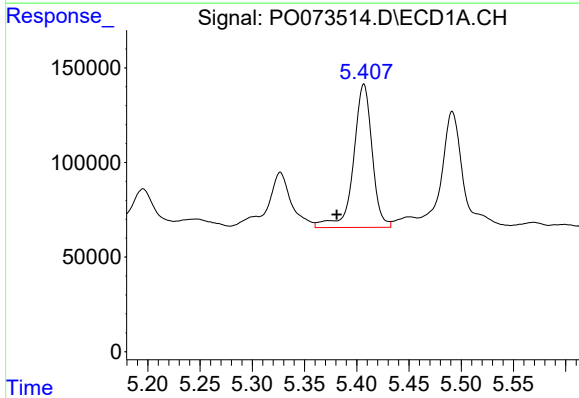
R.T.: 0.000 min
 Exp R.T.: 5.294 min
 Response: 0
 Conc: N.D.

Instrument :
 ECD_O
 ClientSampled :



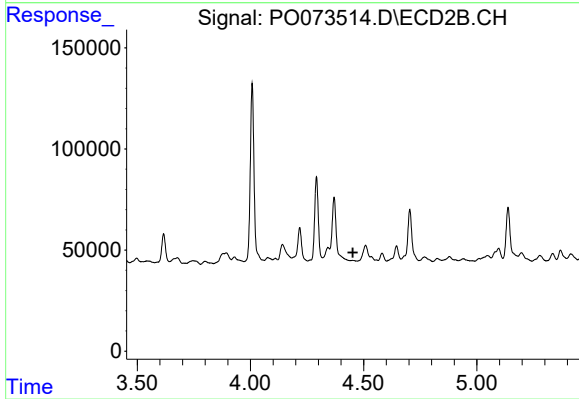
#9 AR-1221-2

R.T.: 4.369 min
 Delta R.T.: 0.005 min
 Response: 421209
 Conc: 1041.99 ng/ml



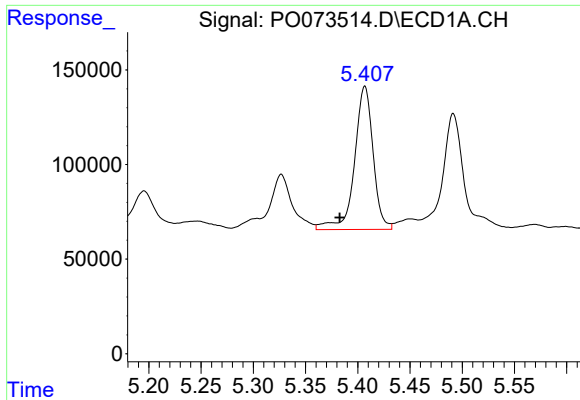
#10 AR-1221-3

R.T.: 5.407 min
 Delta R.T.: 0.026 min
 Response: 939879
 Conc: 419.20 ng/ml



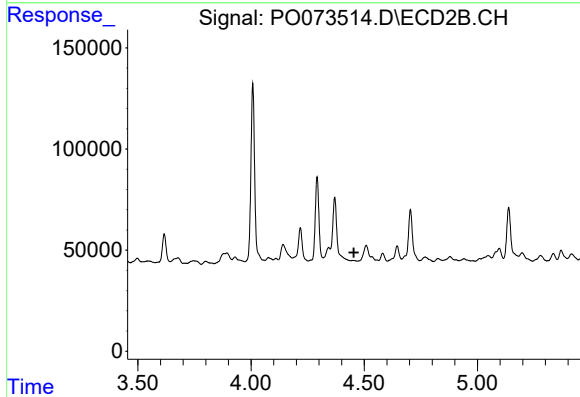
#10 AR-1221-3

R.T.: 0.000 min
 Exp R.T.: 4.453 min
 Response: 0
 Conc: N.D.

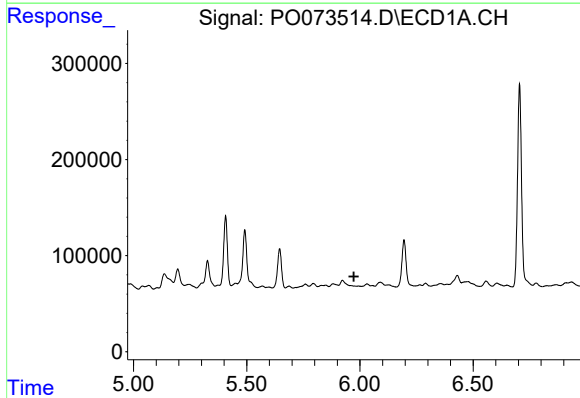


#11 AR-1232-1
 R.T.: 5.407 min
 Delta R.T.: 0.024 min
 Response: 939879
 Conc: 509.29 ng/ml

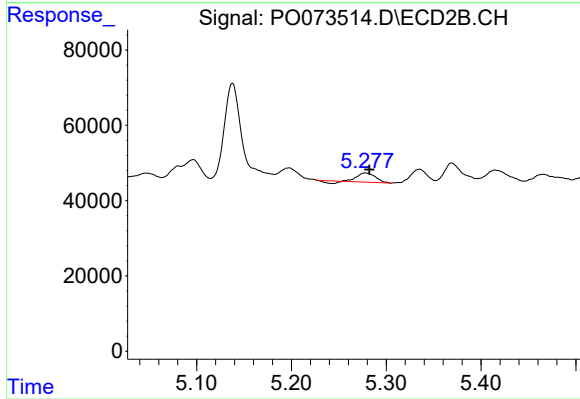
Instrument :
 ECD_O
 ClientSampled :



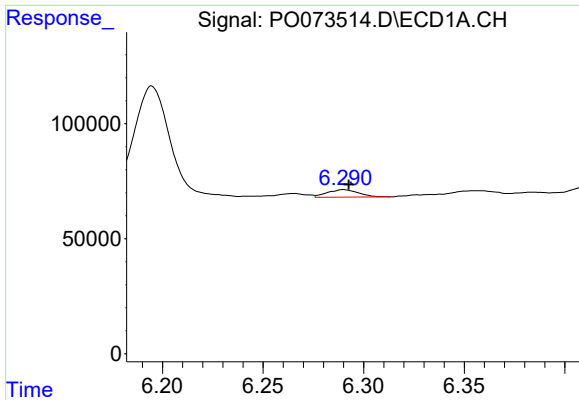
#11 AR-1232-1
 R.T.: 0.000 min
 Exp R.T. : 4.454 min
 Response: 0
 Conc: N.D.



#12 AR-1232-2
 R.T.: 0.000 min
 Exp R.T. : 5.973 min
 Response: 0
 Conc: N.D.



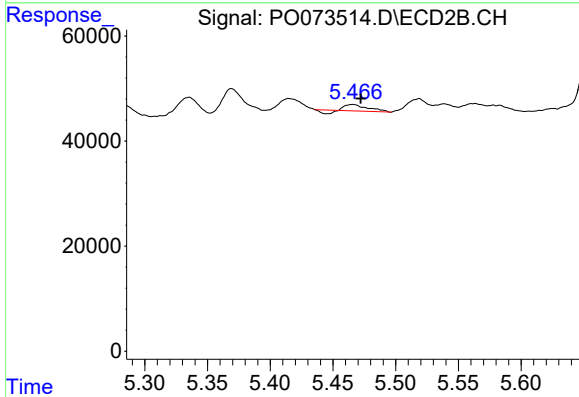
#12 AR-1232-2
 R.T.: 5.278 min
 Delta R.T.: -0.004 min
 Response: 28564
 Conc: 23.90 ng/ml



#13 AR-1232-3

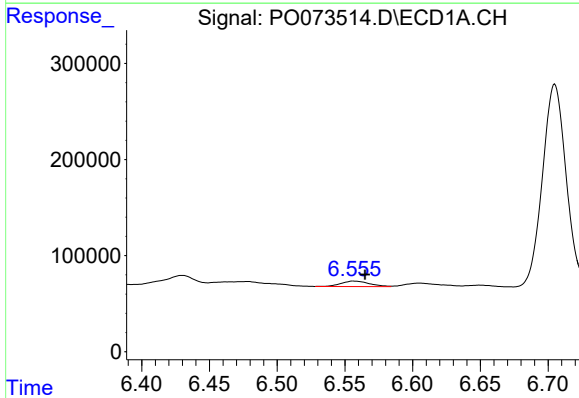
R.T.: 6.290 min
 Delta R.T.: -0.002 min
 Response: 35238
 Conc: 18.01 ng/ml

Instrument :
 ECD_O
 ClientSampleId :



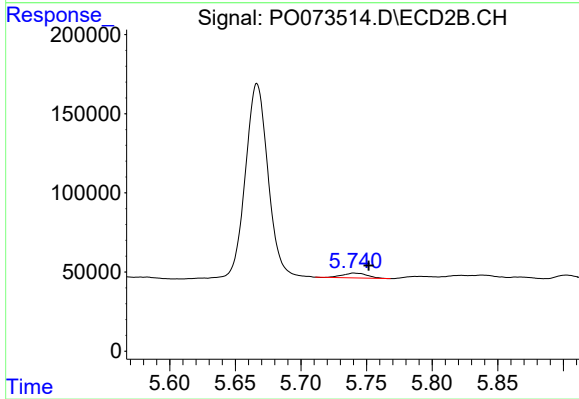
#13 AR-1232-3

R.T.: 5.466 min
 Delta R.T.: -0.006 min
 Response: 11805
 Conc: 18.82 ng/ml



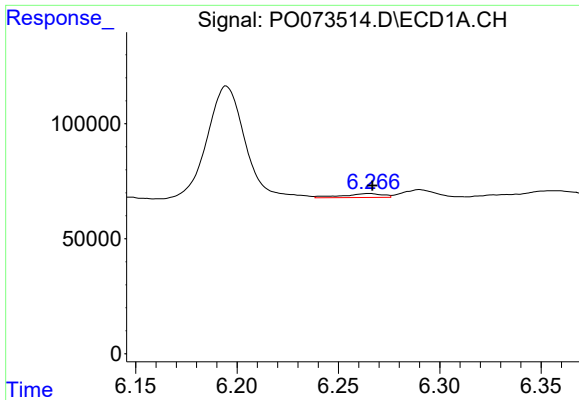
#15 AR-1232-5

R.T.: 6.557 min
 Delta R.T.: -0.008 min
 Response: 80788
 Conc: 120.00 ng/ml



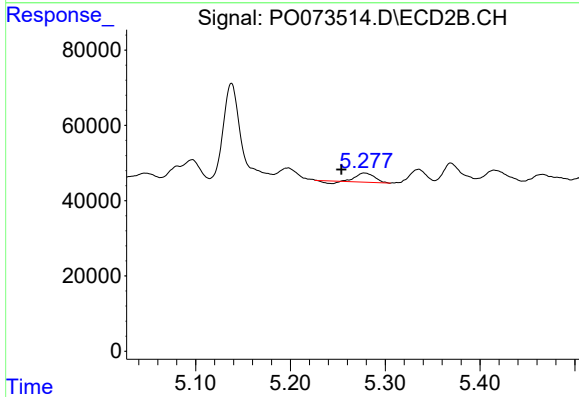
#15 AR-1232-5

R.T.: 5.741 min
 Delta R.T.: -0.011 min
 Response: 39245
 Conc: 66.43 ng/ml

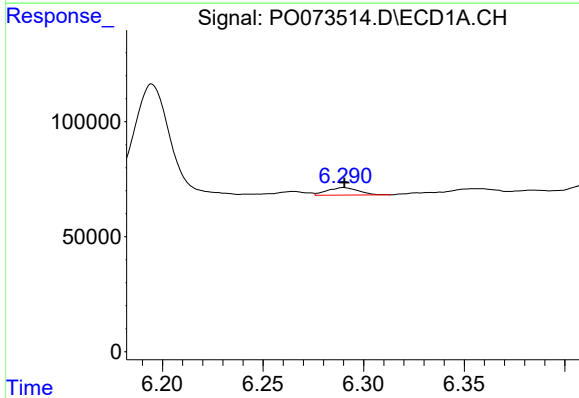


#16 AR-1242-1
 R.T.: 6.265 min
 Delta R.T.: -0.002 min
 Response: 23565
 Conc: 8.93 ng/ml

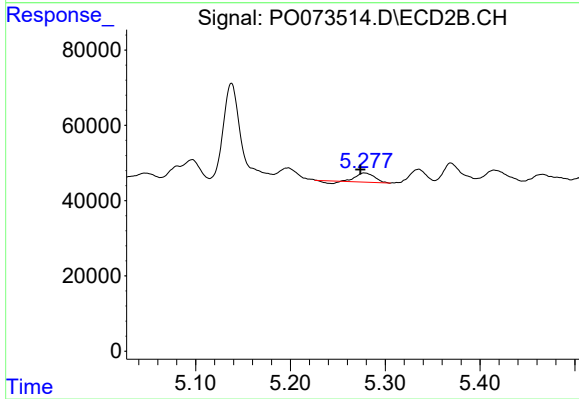
Instrument :
 ECD_O
 ClientSampled :



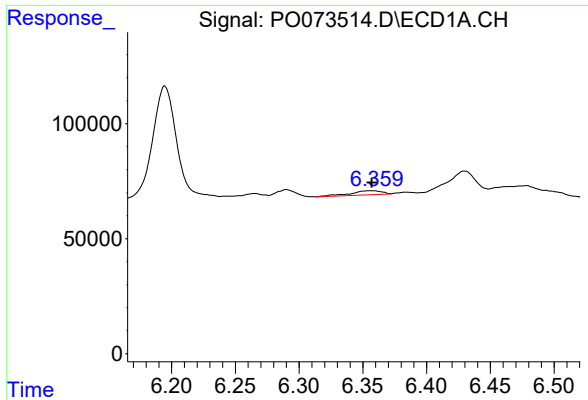
#16 AR-1242-1
 R.T.: 5.278 min
 Delta R.T.: 0.025 min
 Response: 28564
 Conc: 17.46 ng/ml



#17 AR-1242-2
 R.T.: 6.290 min
 Delta R.T.: 0.000 min
 Response: 35238
 Conc: 9.64 ng/ml

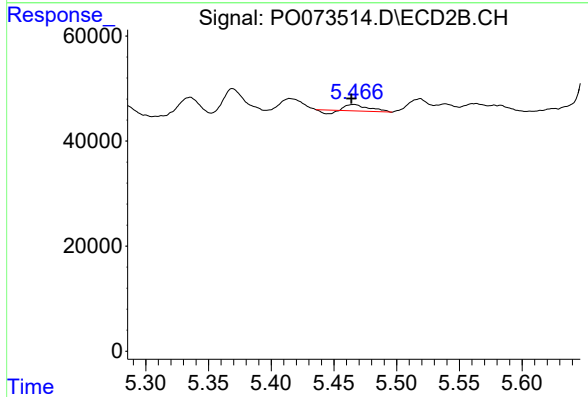


#17 AR-1242-2
 R.T.: 5.278 min
 Delta R.T.: 0.004 min
 Response: 28564
 Conc: 12.63 ng/ml

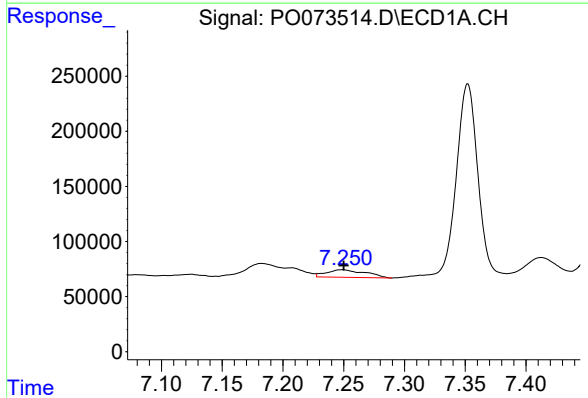


#18 AR-1242-3
 R.T.: 6.357 min
 Delta R.T.: 0.000 min
 Response: 30418
 Conc: 13.79 ng/ml

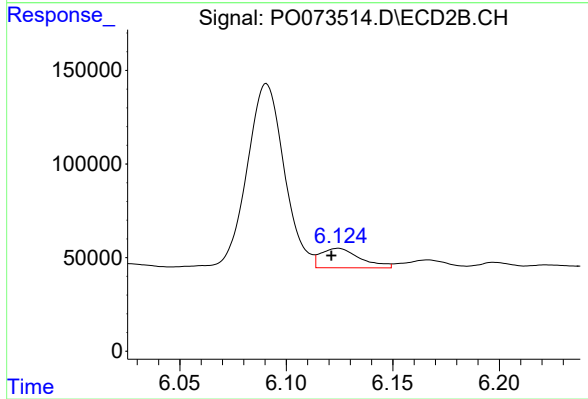
Instrument :
 ECD_O
 ClientSampleId :



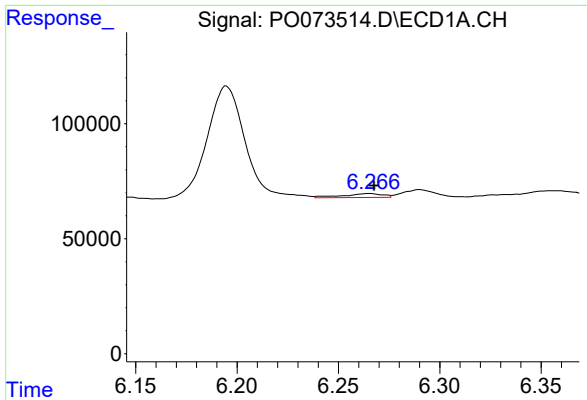
#18 AR-1242-3
 R.T.: 5.466 min
 Delta R.T.: 0.002 min
 Response: 11805
 Conc: 9.83 ng/ml



#20 AR-1242-5
 R.T.: 7.249 min
 Delta R.T.: 0.000 min
 Response: 153194
 Conc: 72.83 ng/ml

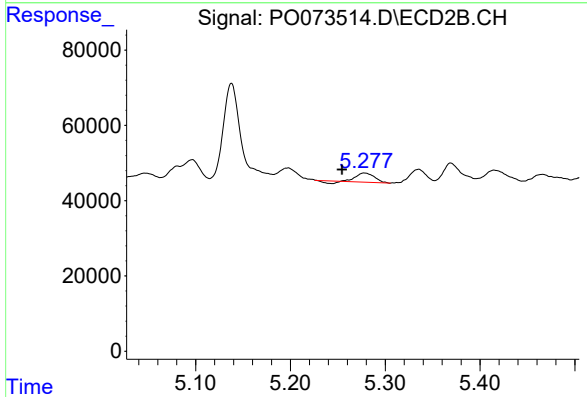


#20 AR-1242-5
 R.T.: 6.124 min
 Delta R.T.: 0.003 min
 Response: 133300
 Conc: 86.09 ng/ml

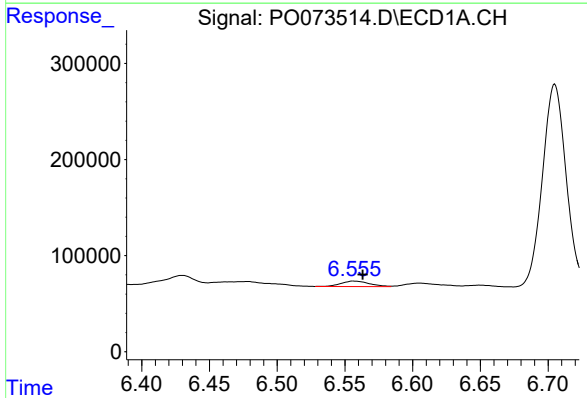


#21 AR-1248-1
 R.T.: 6.265 min
 Delta R.T.: -0.003 min
 Response: 23565
 Conc: 11.79 ng/ml

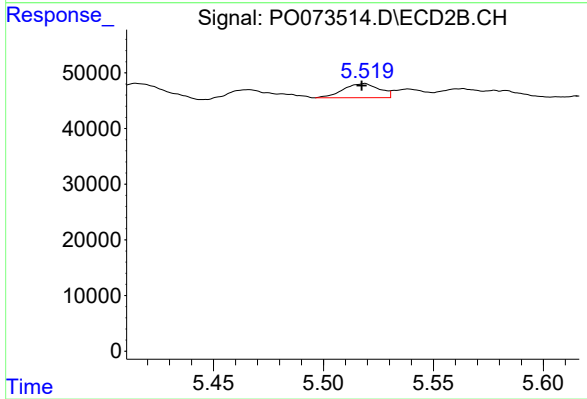
Instrument :
 ECD_O
 ClientSampleId :



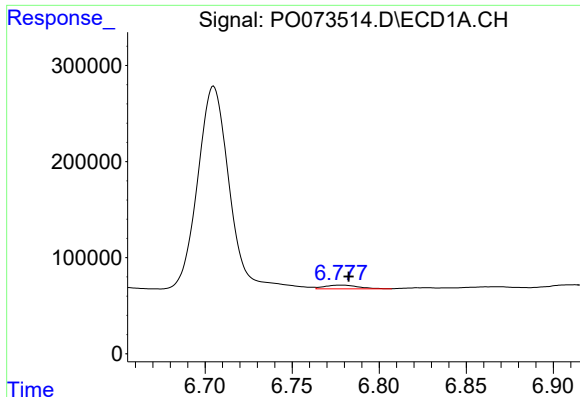
#21 AR-1248-1
 R.T.: 5.278 min
 Delta R.T.: 0.024 min
 Response: 28564
 Conc: 22.78 ng/ml



#22 AR-1248-2
 R.T.: 6.557 min
 Delta R.T.: -0.007 min
 Response: 80788
 Conc: 31.25 ng/ml



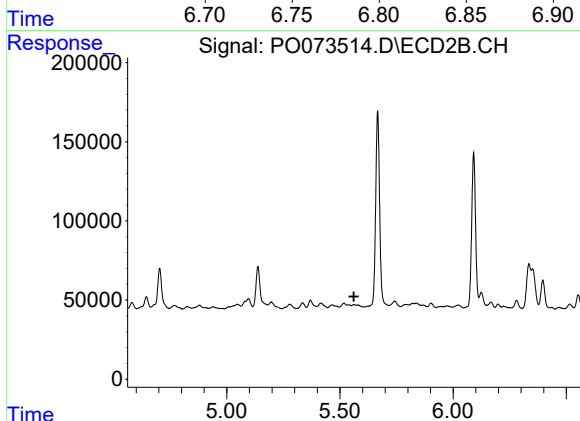
#22 AR-1248-2
 R.T.: 5.518 min
 Delta R.T.: 0.001 min
 Response: 28930
 Conc: 17.11 ng/ml



#23 AR-1248-3

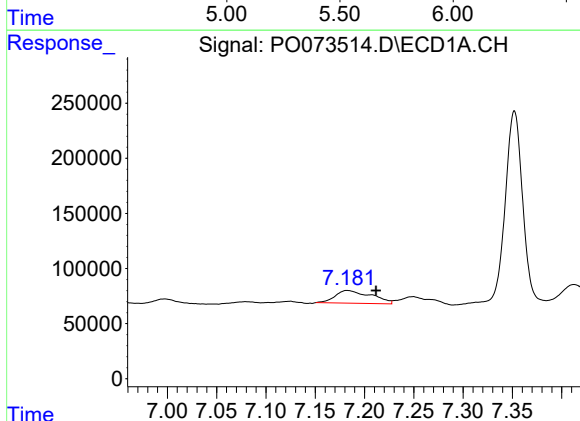
R.T.: 6.778 min
 Delta R.T.: -0.004 min
 Response: 53385
 Conc: 17.42 ng/ml

Instrument :
 ECD_O
 ClientSampled :



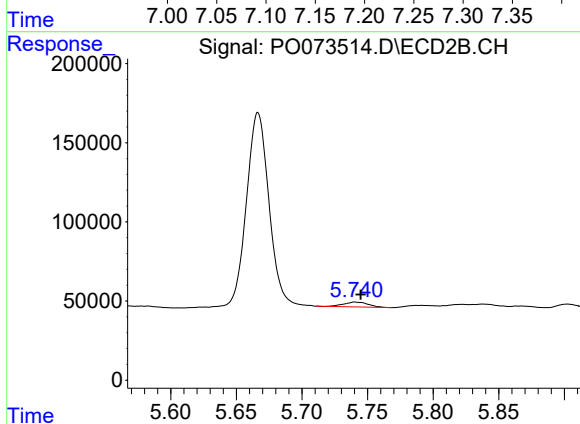
#23 AR-1248-3

R.T.: 0.000 min
 Exp R.T. : 5.562 min
 Response: 0
 Conc: N.D.



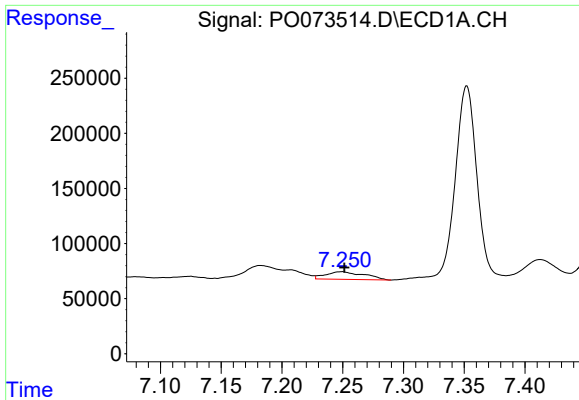
#24 AR-1248-4

R.T.: 7.182 min
 Delta R.T.: -0.029 min
 Response: 295136
 Conc: 79.12 ng/ml



#24 AR-1248-4

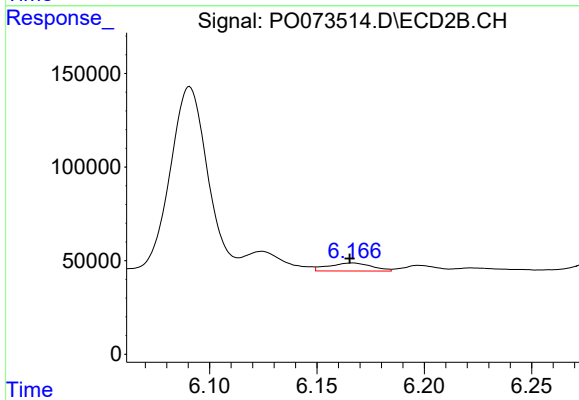
R.T.: 5.741 min
 Delta R.T.: -0.004 min
 Response: 39245
 Conc: 19.09 ng/ml



#25 AR-1248-5

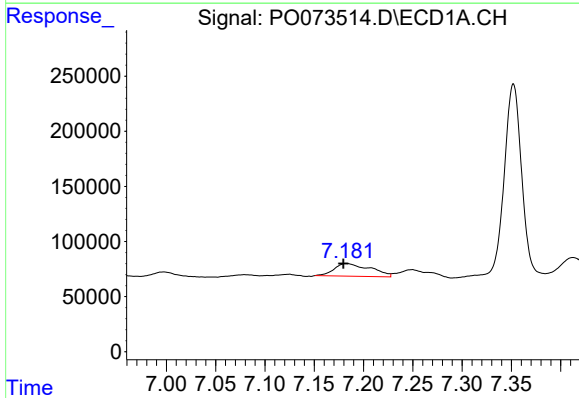
R.T.: 7.249 min
 Delta R.T.: -0.002 min
 Response: 153194
 Conc: 42.82 ng/ml

Instrument :
 ECD_O
 ClientSampled :



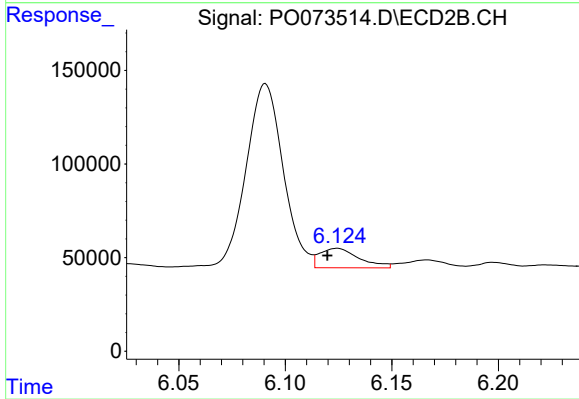
#25 AR-1248-5

R.T.: 6.167 min
 Delta R.T.: 0.001 min
 Response: 60423
 Conc: 27.21 ng/ml



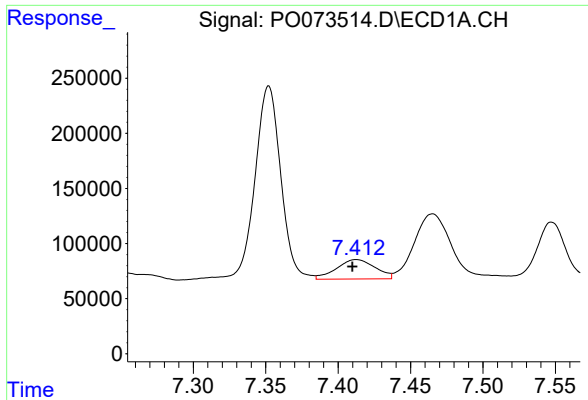
#26 AR-1254-1

R.T.: 7.182 min
 Delta R.T.: 0.003 min
 Response: 295136
 Conc: 85.34 ng/ml



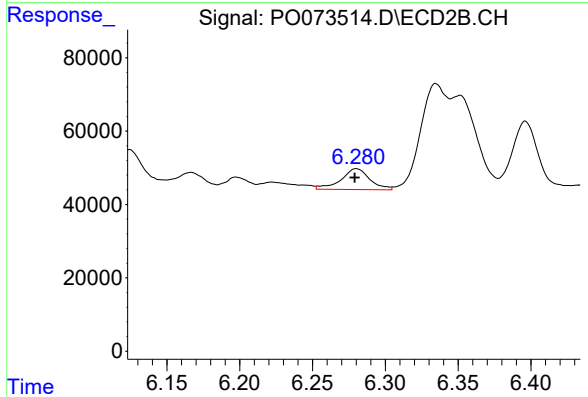
#26 AR-1254-1

R.T.: 6.124 min
 Delta R.T.: 0.004 min
 Response: 133300
 Conc: 42.81 ng/ml

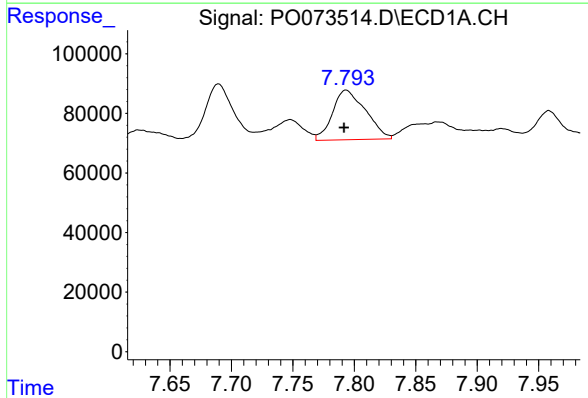


#27 AR-1254-2
 R.T.: 7.412 min
 Delta R.T.: 0.002 min
 Response: 326221
 Conc: 59.88 ng/ml

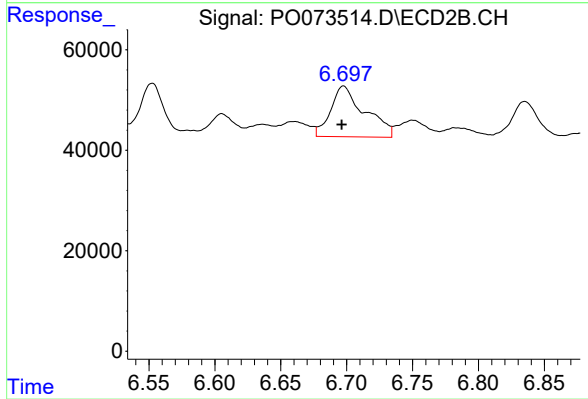
Instrument :
 ECD_O
 ClientSampleId :



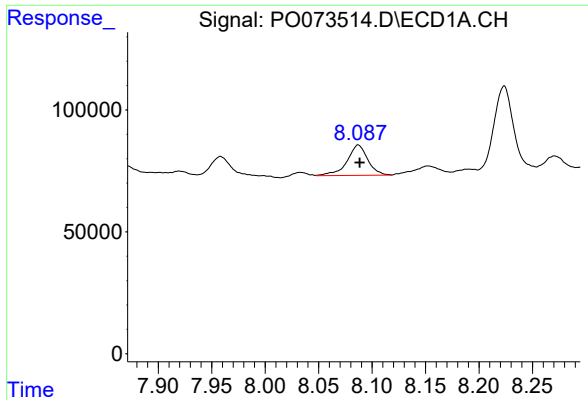
#27 AR-1254-2
 R.T.: 6.280 min
 Delta R.T.: 0.001 min
 Response: 78787
 Conc: 28.86 ng/ml



#28 AR-1254-3
 R.T.: 7.793 min
 Delta R.T.: 0.002 min
 Response: 312146
 Conc: 55.08 ng/ml

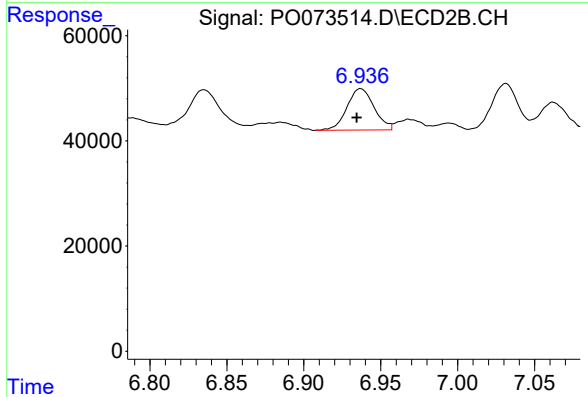


#28 AR-1254-3
 R.T.: 6.698 min
 Delta R.T.: 0.001 min
 Response: 181988
 Conc: 43.03 ng/ml

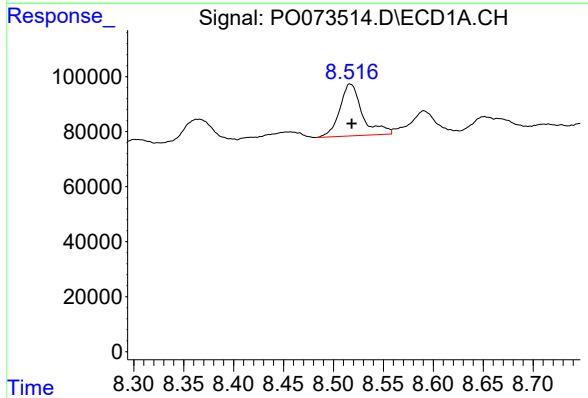


#29 AR-1254-4
 R.T.: 8.087 min
 Delta R.T.: -0.001 min
 Response: 167829
 Conc: 34.69 ng/ml

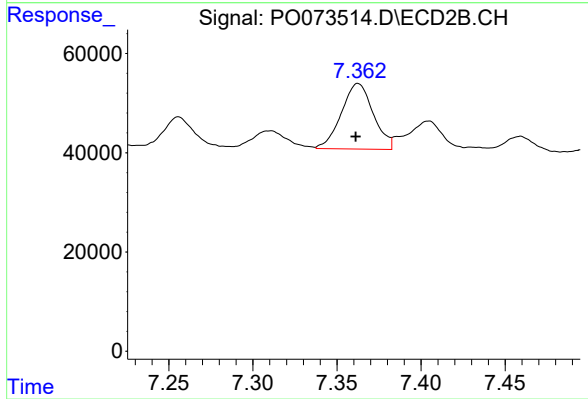
Instrument :
 ECD_O
 ClientSampled :



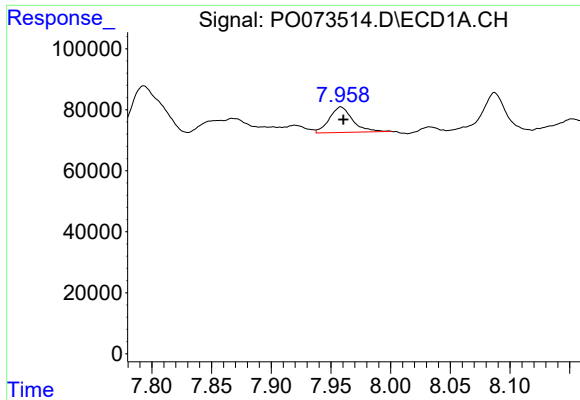
#29 AR-1254-4
 R.T.: 6.937 min
 Delta R.T.: 0.002 min
 Response: 96127
 Conc: 33.30 ng/ml



#30 AR-1254-5
 R.T.: 8.517 min
 Delta R.T.: -0.002 min
 Response: 297690
 Conc: 62.54 ng/ml

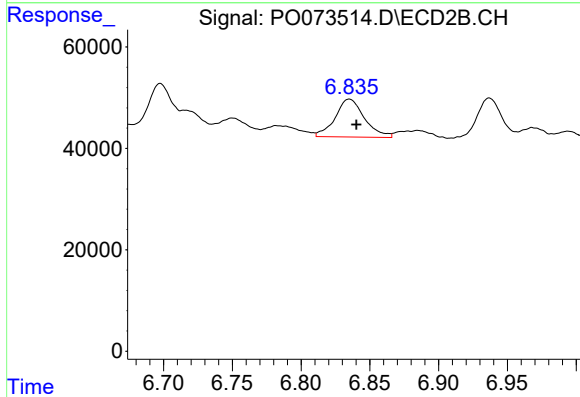


#30 AR-1254-5
 R.T.: 7.363 min
 Delta R.T.: 0.001 min
 Response: 174647
 Conc: 47.29 ng/ml

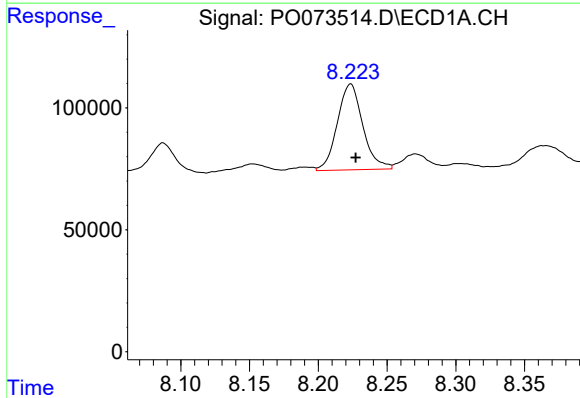


#31 AR-1260-1
 R.T.: 7.958 min
 Delta R.T.: -0.002 min
 Response: 116183
 Conc: 28.79 ng/ml

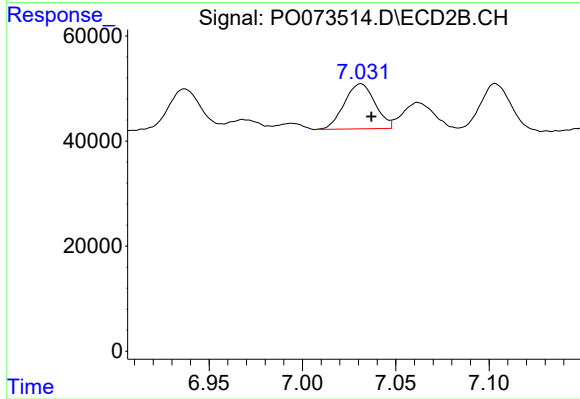
Instrument :
 ECD_O
 ClientSampled :



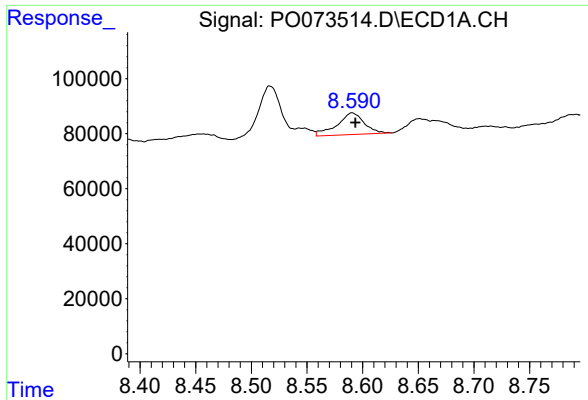
#31 AR-1260-1
 R.T.: 6.835 min
 Delta R.T.: -0.005 min
 Response: 110808
 Conc: 41.24 ng/ml



#32 AR-1260-2
 R.T.: 8.224 min
 Delta R.T.: -0.004 min
 Response: 454833
 Conc: 82.76 ng/ml

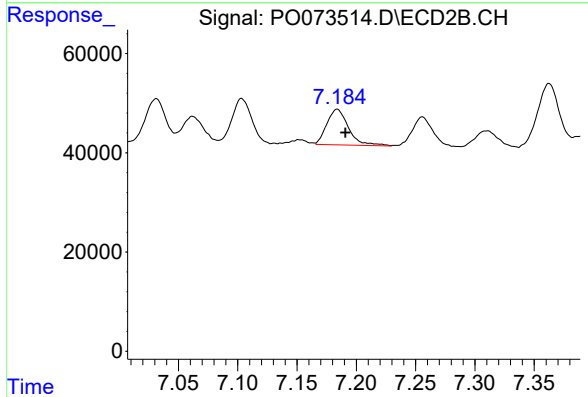


#32 AR-1260-2
 R.T.: 7.031 min
 Delta R.T.: -0.006 min
 Response: 98518
 Conc: 29.54 ng/ml

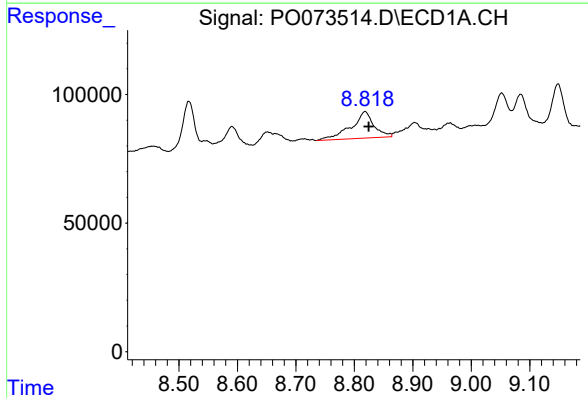


#33 AR-1260-3
 R.T.: 8.591 min
 Delta R.T.: -0.003 min
 Response: 134508
 Conc: 30.31 ng/ml

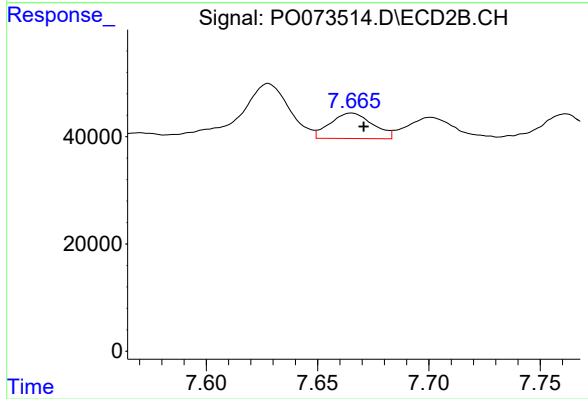
Instrument :
 ECD_O
 ClientSampleId :



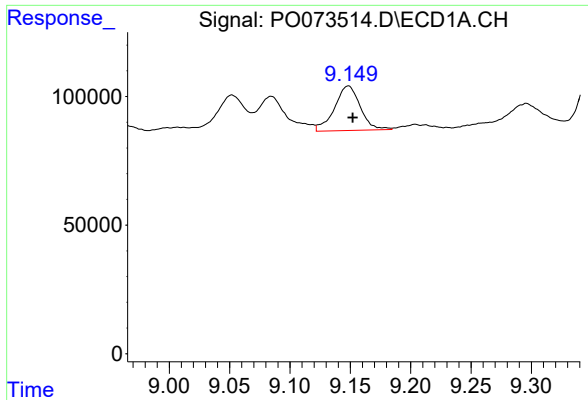
#33 AR-1260-3
 R.T.: 7.184 min
 Delta R.T.: -0.007 min
 Response: 91226
 Conc: 29.53 ng/ml



#34 AR-1260-4
 R.T.: 8.818 min
 Delta R.T.: -0.006 min
 Response: 280917
 Conc: 65.09 ng/ml

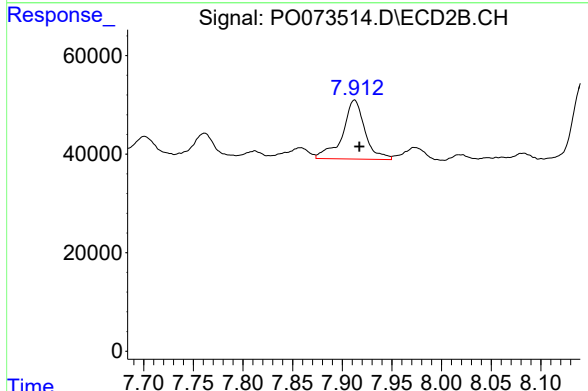


#34 AR-1260-4
 R.T.: 7.665 min
 Delta R.T.: -0.006 min
 Response: 62999
 Conc: 25.60 ng/ml

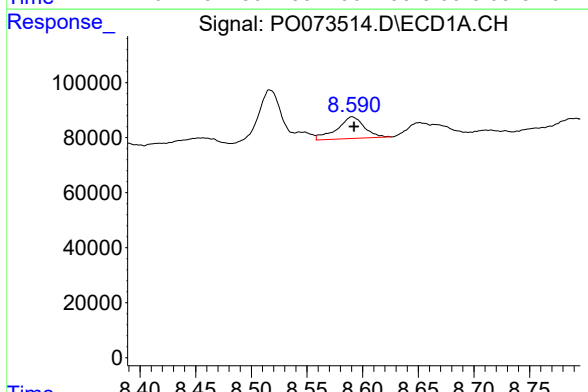


#35 AR-1260-5
 R.T.: 9.148 min
 Delta R.T.: -0.004 min
 Response: 257324
 Conc: 26.06 ng/ml

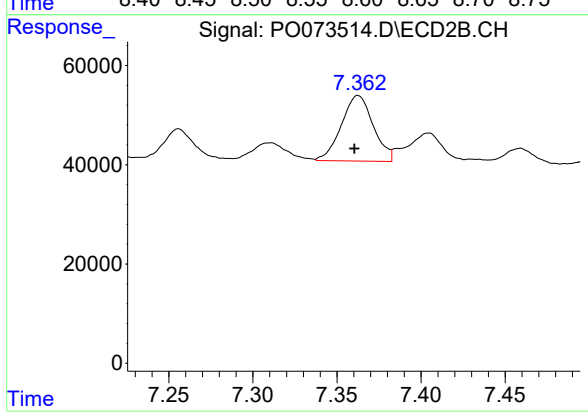
Instrument :
 ECD_O
 ClientSampleId :



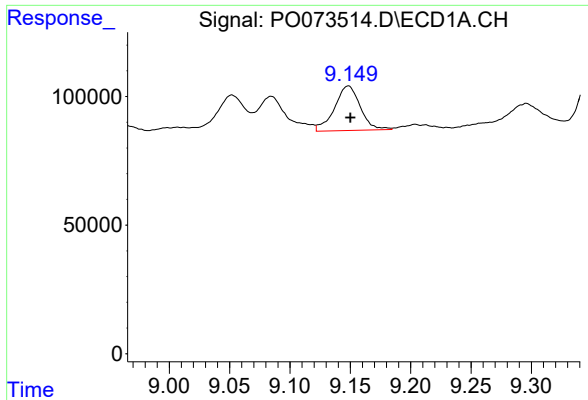
#35 AR-1260-5
 R.T.: 7.912 min
 Delta R.T.: -0.005 min
 Response: 188749
 Conc: 30.47 ng/ml



#36 AR-1262-1
 R.T.: 8.591 min
 Delta R.T.: -0.002 min
 Response: 134508
 Conc: 21.54 ng/ml



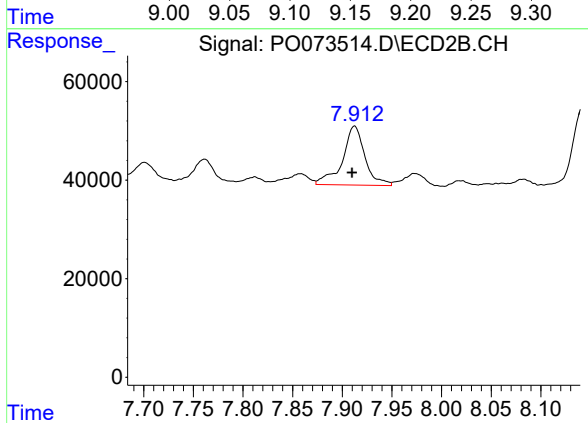
#36 AR-1262-1
 R.T.: 7.363 min
 Delta R.T.: 0.002 min
 Response: 174647
 Conc: 90.12 ng/ml



#37 AR-1262-2

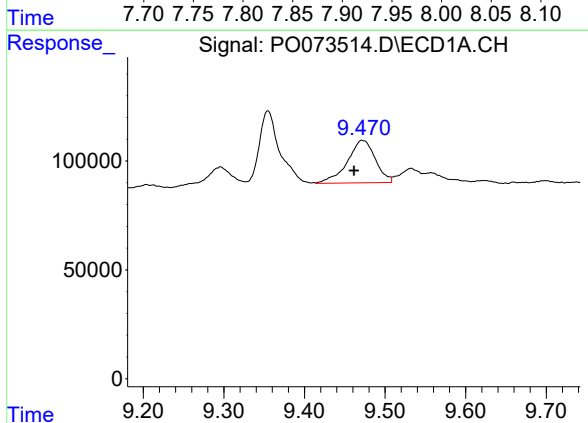
R.T.: 9.148 min
 Delta R.T.: -0.002 min
 Response: 257324
 Conc: 23.79 ng/ml

Instrument :
 ECD_O
 ClientSampleId :



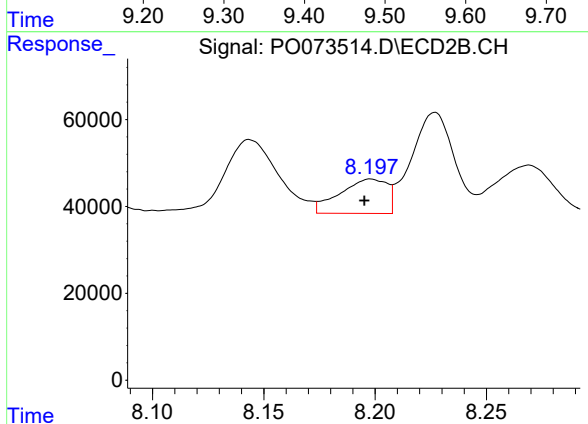
#37 AR-1262-2

R.T.: 7.912 min
 Delta R.T.: 0.003 min
 Response: 188749
 Conc: 28.79 ng/ml



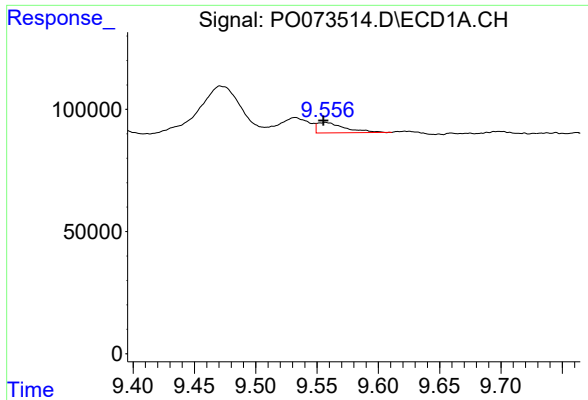
#38 AR-1262-3

R.T.: 9.471 min
 Delta R.T.: 0.010 min
 Response: 472930
 Conc: 64.43 ng/ml



#38 AR-1262-3

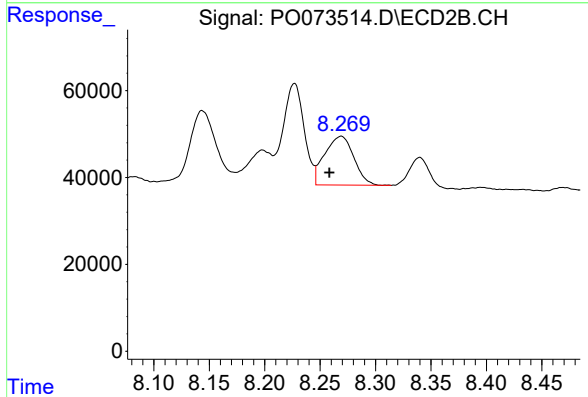
R.T.: 8.198 min
 Delta R.T.: 0.003 min
 Response: 117182
 Conc: 43.43 ng/ml



#39 AR-1262-4

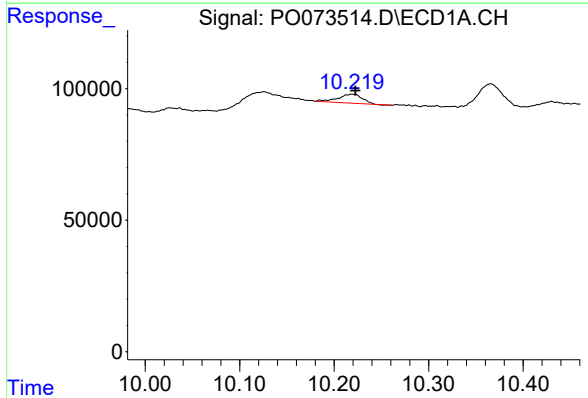
R.T.: 9.557 min
 Delta R.T.: 0.002 min
 Response: 67756
 Conc: 12.31 ng/ml

Instrument :
 ECD_O
 ClientSampled :



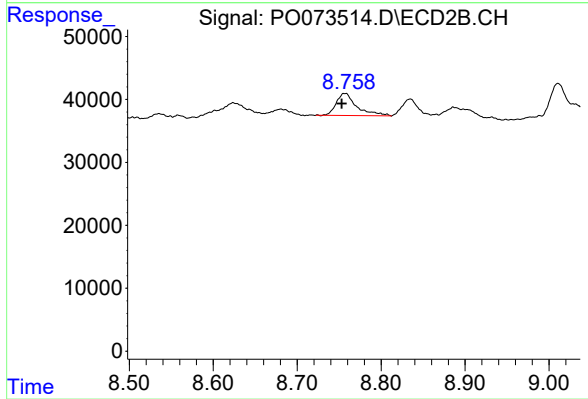
#39 AR-1262-4

R.T.: 8.269 min
 Delta R.T.: 0.011 min
 Response: 205112
 Conc: 42.96 ng/ml



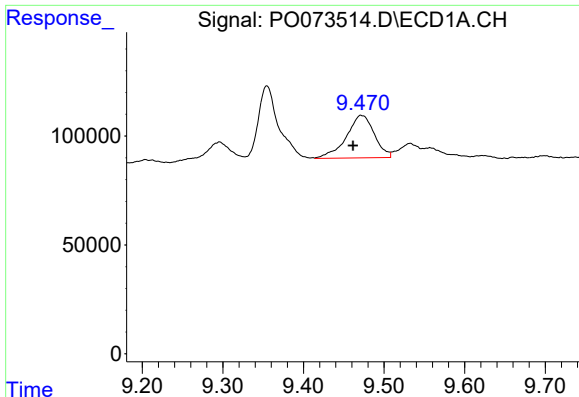
#40 AR-1262-5

R.T.: 10.219 min
 Delta R.T.: -0.003 min
 Response: 60094
 Conc: 15.44 ng/ml



#40 AR-1262-5

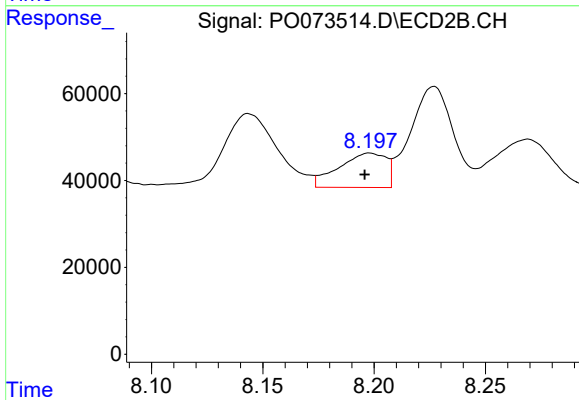
R.T.: 8.757 min
 Delta R.T.: 0.004 min
 Response: 59706
 Conc: 26.11 ng/ml



#41 AR-1268-1

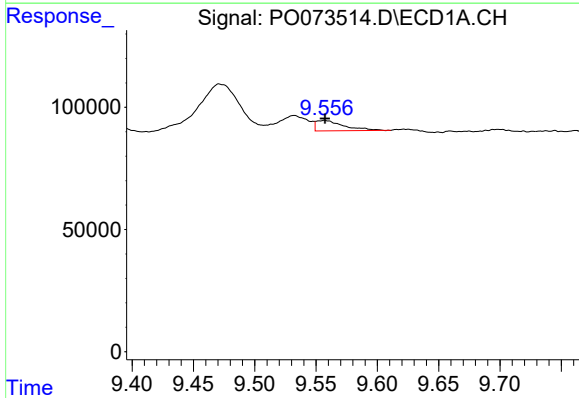
R.T.: 9.471 min
 Delta R.T.: 0.010 min
 Response: 472930
 Conc: 33.86 ng/ml

Instrument :
 ECD_O
 ClientSampled :



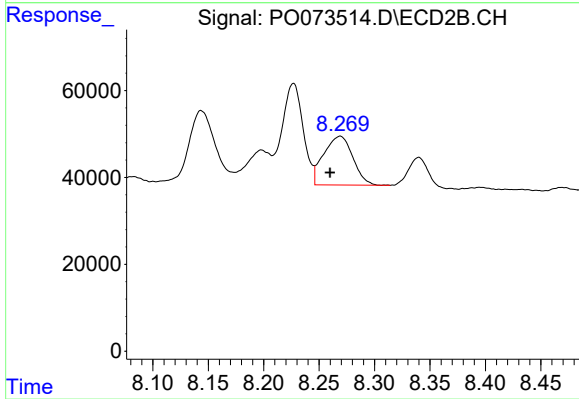
#41 AR-1268-1

R.T.: 8.198 min
 Delta R.T.: 0.002 min
 Response: 117182
 Conc: 14.38 ng/ml



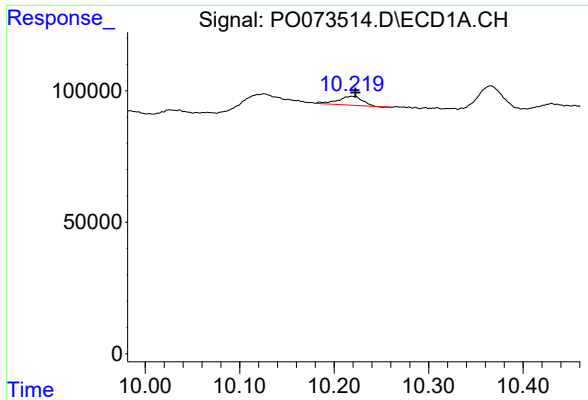
#42 AR-1268-2

R.T.: 9.557 min
 Delta R.T.: 0.000 min
 Response: 67756
 Conc: 5.58 ng/ml



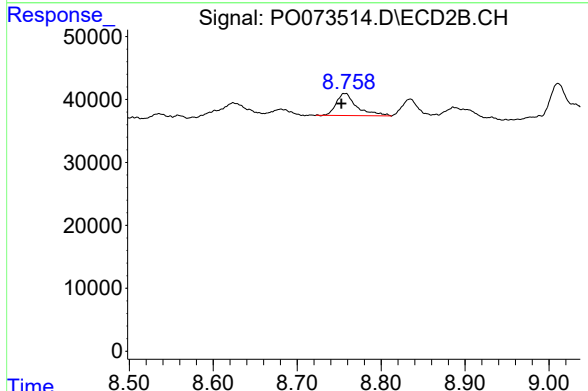
#42 AR-1268-2

R.T.: 8.269 min
 Delta R.T.: 0.009 min
 Response: 205112
 Conc: 28.08 ng/ml

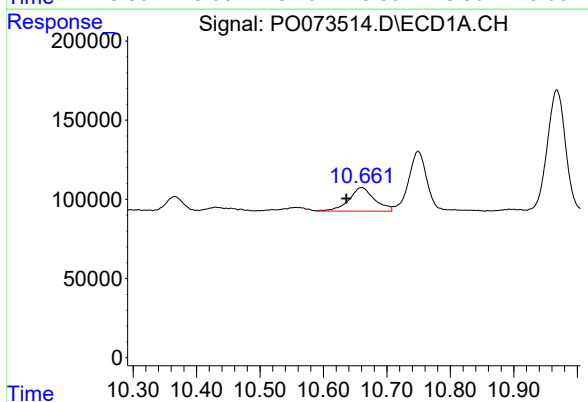


#44 AR-1268-4
 R.T.: 10.219 min
 Delta R.T.: -0.003 min
 Response: 60094
 Conc: 13.32 ng/ml

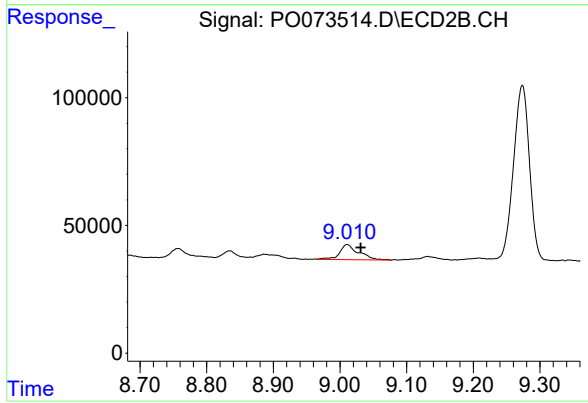
Instrument :
 ECD_O
 ClientSampleId :



#44 AR-1268-4
 R.T.: 8.757 min
 Delta R.T.: 0.004 min
 Response: 59706
 Conc: 22.29 ng/ml



#45 AR-1268-5
 R.T.: 10.660 min
 Delta R.T.: 0.024 min
 Response: 414414
 Conc: 13.02 ng/ml



#45 AR-1268-5
 R.T.: 9.011 min
 Delta R.T.: -0.020 min
 Response: 119368
 Conc: 6.54 ng/ml