

Data Path : Z:\pestpcbsrv\HPCHEM1\ECD\_0\Data\PO112420\  
 Data File : PO073515.D  
 Signal(s) : Signal #1: ECD1A.CH Signal #2: ECD2B.CH  
 Acq On : 24 Nov 2020 15:13  
 Operator : DD\AJ  
 Sample : L4844-01  
 Misc :  
 ALS Vial : 17 Sample Multiplier: 1

Instrument :  
 ECD\_0  
 ClientSampleId :  
 OR-02-112020

Integration File signal 1: autoint1.e  
 Integration File signal 2: autoint2.e  
 Quant Time: Nov 25 10:32:47 2020  
 Quant Method : Z:\pestpcbsrv\HPCHEM1\ECD\_0\methods\PO112320.M  
 Quant Title : GC EXTRACTABLES  
 QLast Update : Wed Nov 25 10:04:26 2020  
 Response via : Initial Calibration  
 Integrator: ChemStation 6890 Scale Mode: Small noise peaks clipped

Volume Inj. : 2 µl  
 Signal #1 Phase : ZB-MR1 Signal #2 Phase: ZB-MR2  
 Signal #1 Info : 30Mx0.32mmx 0.50µ Signal #2 Info : 30M x 0.32mm x 0.25µm

Compound	RT#1	RT#2	Resp#1	Resp#2	ng/ml	ng/ml
System Monitoring Compounds						
1) SA Tetrachlo...	4.942	4.007	1122212	1574997	13.415	32.124 #
2) SA Decachlor...	10.966	9.272	1405406	769185	17.045	16.776
Target Compounds						
3) L1 AR-1016-1	6.290f	5.285f	149165	53728	45.297	26.373 #
4) L1 AR-1016-2	6.290	5.285	149165	53728	32.403	19.211 #
5) L1 AR-1016-3	6.344	0.000	85457	0	31.209	N.D. #
6) L1 AR-1016-4	6.469	5.515	65098	104433	28.522	87.872 #
7) L1 AR-1016-5	6.777	5.741	95071	478926	42.285	318.159 #
8) L2 AR-1221-1	5.194	4.291f	72497	77165	73.085	136.911 #
9) L2 AR-1221-2	5.299	4.351	121338	189166	172.520	467.961 #
10) L2 AR-1221-3	5.365f	4.462	71242	8579	31.775	6.459 #
11) L3 AR-1232-1	5.365f	4.462	71242	8579	38.604	7.543 #
12) L3 AR-1232-2	5.987	5.285	43232	53728	45.429	44.953
13) L3 AR-1232-3	6.290	0.000	149165	0	76.255	N.D. #
14) L3 AR-1232-4	6.469	5.564	65098	81307	65.842	150.811 #
15) L3 AR-1232-5	6.561	5.741	134435	478926	199.681	810.671 #
16) L4 AR-1242-1	6.290f	0.000	149165	0	56.556	N.D. #
17) L4 AR-1242-2	6.290	5.285	149165	53728	40.806	23.754 #
18) L4 AR-1242-3	6.344	0.000	85457	0	38.751	N.D. #
19) L4 AR-1242-4	6.469	5.564	65098	81307	35.072	73.976 #
20) L4 AR-1242-5	7.275f	6.121	257304	197946	122.330	127.841
21) L5 AR-1248-1	6.290f	0.000	149165	0	74.616	N.D. #
22) L5 AR-1248-2	6.561	5.515	134435	104433	52.002	61.753
23) L5 AR-1248-3	6.777	5.564	95071	81307	31.023	47.646 #
24) L5 AR-1248-4	7.211	5.741	64459	478926	17.280	232.976 #
25) L5 AR-1248-5	7.275f	6.166	257304	54970	71.914	24.755 #
26) L6 AR-1254-1	7.176	6.121	128550	197946	37.171	63.570 #
27) L6 AR-1254-2	7.409	6.280	345047	116718	63.335	42.754 #
28) L6 AR-1254-3	7.790	6.696	387158	242039	68.315	57.230
29) L6 AR-1254-4	8.087	6.934	176980	141939	36.580	49.164 #
30) L6 AR-1254-5	8.515	7.361	216373	180970	45.453	49.001
31) L7 AR-1260-1	7.956	6.834	84952	224512	21.052	83.562 #
32) L7 AR-1260-2	8.227	7.030	869677	109110	158.242	32.712 #
33) L7 AR-1260-3	8.589	7.198	42586	346917	9.597	112.301 #
34) L7 AR-1260-4	8.812	7.663	231731	93073	53.689	37.822 #
35) L7 AR-1260-5	9.148	7.909	151686	81130	15.361	13.096
36) L8 AR-1262-1	8.589	7.361	42586	180970	6.821	93.383 #
37) L8 AR-1262-2	9.148	7.909	151686	81130	14.023	12.374
38) L8 AR-1262-3	9.484f	8.197	100218	51740	13.654	19.176 #
39) L8 AR-1262-4	9.533f	8.257	95692	96206	17.389	20.149
40) L8 AR-1262-5	10.194f	0.000	36528	0	9.385	N.D. #
41) L9 AR-1268-1	9.484f	8.197	100218	51740	7.175	6.351

Data Path : Z:\pestpcbsrv\HPCHEM1\ECD\_0\Data\PO112420\  
 Data File : PO073515.D  
 Signal(s) : Signal #1: ECD1A.CH Signal #2: ECD2B.CH  
 Acq On : 24 Nov 2020 15:13  
 Operator : DD\AJ  
 Sample : L4844-01  
 Misc :  
 ALS Vial : 17 Sample Multiplier: 1

Instrument :  
 ECD\_0  
 ClientSampleId :  
 OR-02-112020

Integration File signal 1: autoint1.e  
 Integration File signal 2: autoint2.e  
 Quant Time: Nov 25 10:32:47 2020  
 Quant Method : Z:\pestpcbsrv\HPCHEM1\ECD\_0\methods\PO112320.M  
 Quant Title : GC EXTRACTABLES  
 QLast Update : Wed Nov 25 10:04:26 2020  
 Response via : Initial Calibration  
 Integrator: ChemStation 6890 Scale Mode: Small noise peaks clipped

Volume Inj. : 2 µl  
 Signal #1 Phase : ZB-MR1 Signal #2 Phase: ZB-MR2  
 Signal #1 Info : 30Mx0.32mmx 0.50µ Signal #2 Info : 30M x 0.32mm x 0.25µm

	Compound	RT#1	RT#2	Resp#1	Resp#2	ng/ml	ng/ml
42)	L9 AR-1268-2	9.533f	8.257	95692	96206	7.877	13.172 #
44)	L9 AR-1268-4	10.194f	0.000	36528	0	8.097	N.D. #
45)	L9 AR-1268-5	10.660f	0.000	311133	0	9.775	N.D. #

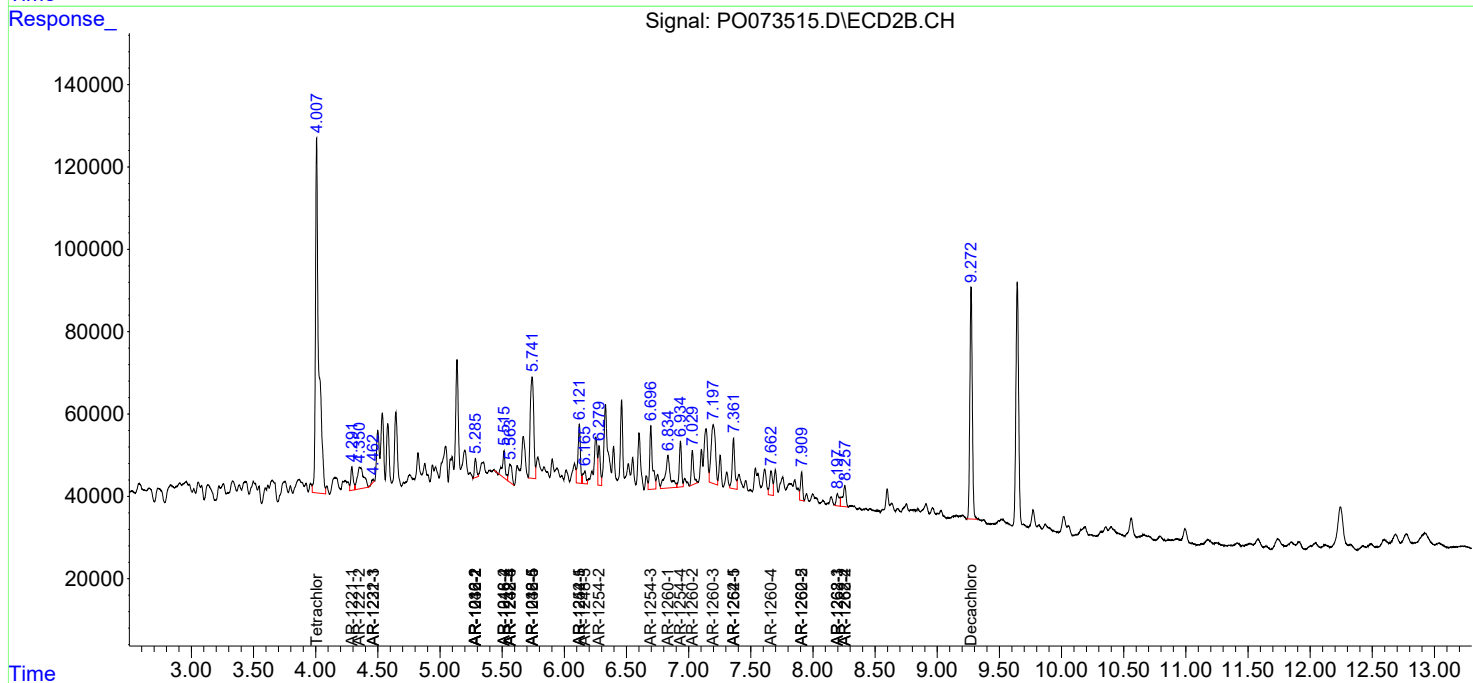
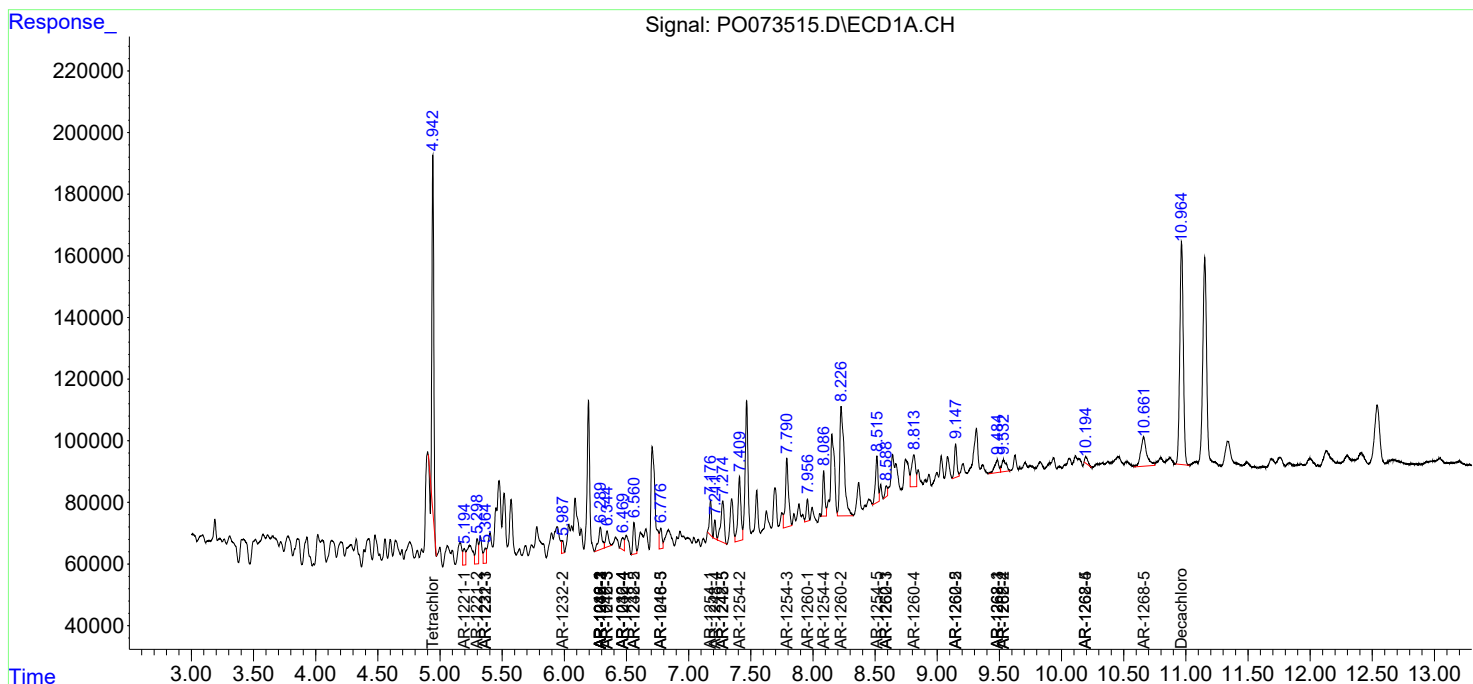
(f)=RT Delta > 1/2 Window (#)=Amounts differ by > 25% (m)=manual int.

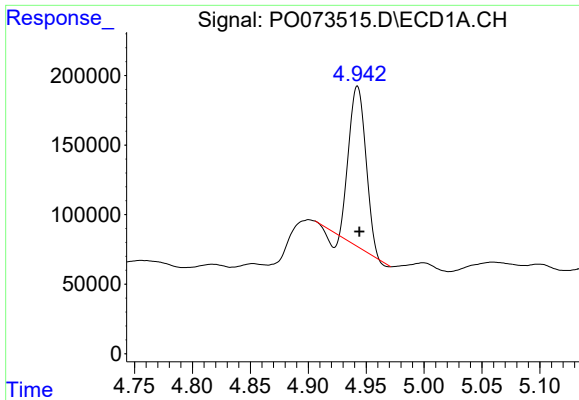
Data Path : Z:\pestpcbsrv\HPCHEM1\ECD\_O\Data\PO112420\  
 Data File : PO073515.D  
 Signal(s) : Signal #1: ECD1A.CH Signal #2: ECD2B.CH  
 Acq On : 24 Nov 2020 15:13  
 Operator : DD\AJ  
 Sample : L4844-01  
 Misc :  
 ALS Vial : 17 Sample Multiplier: 1

Instrument :  
 ECD\_O  
 ClientSampled :  
 OR-02-112020

Integration File signal 1: autoint1.e  
 Integration File signal 2: autoint2.e  
 Quant Time: Nov 25 10:32:47 2020  
 Quant Method : Z:\pestpcbsrv\HPCHEM1\ECD\_O\methods\PO112320.M  
 Quant Title : GC EXTRACTABLES  
 QLast Update : Wed Nov 25 10:04:26 2020  
 Response via : Initial Calibration  
 Integrator: ChemStation 6890 Scale Mode: Small noise peaks clipped

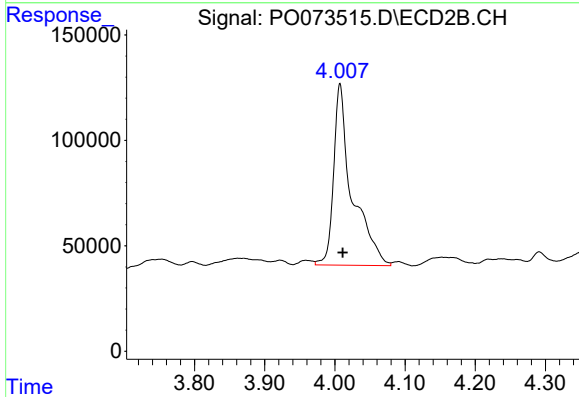
Volume Inj. : 2 µl  
 Signal #1 Phase : ZB-MR1 Signal #2 Phase: ZB-MR2  
 Signal #1 Info : 30Mx0.32mmx 0.50µ Signal #2 Info : 30M x 0.32mm x 0.25µm



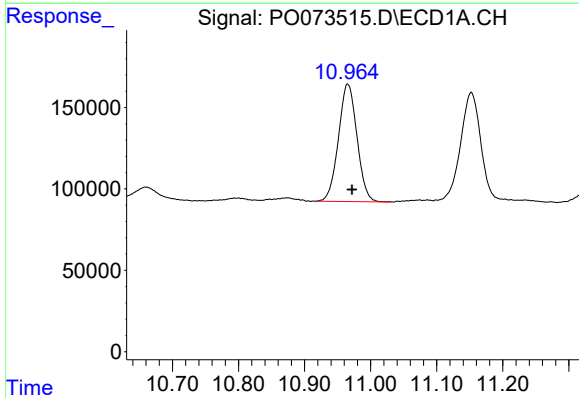


#1 Tetrachloro-m-xylene  
 R.T.: 4.942 min  
 Delta R.T.: -0.002 min  
 Response: 1122212  
 Conc: 13.42 ng/ml

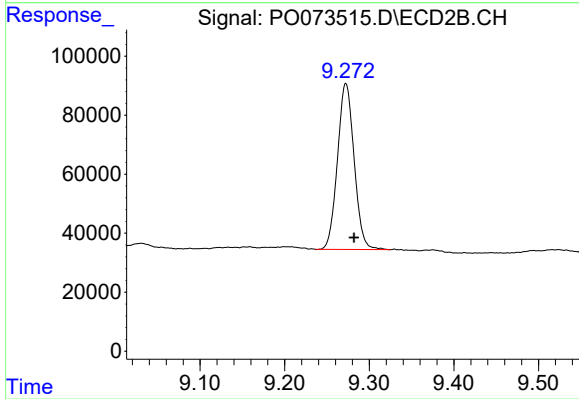
Instrument :  
 ECD\_O  
 ClientSampleId :  
 OR-02-112020



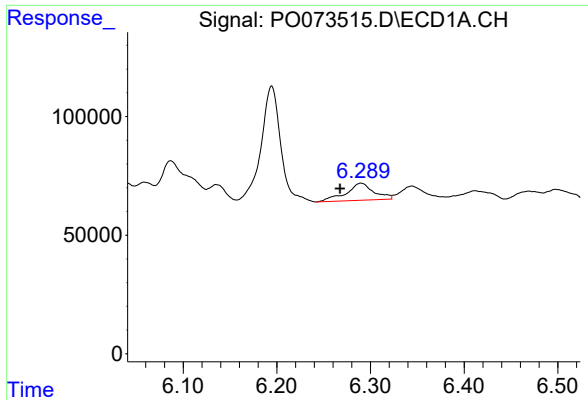
#1 Tetrachloro-m-xylene  
 R.T.: 4.007 min  
 Delta R.T.: -0.004 min  
 Response: 1574997  
 Conc: 32.12 ng/ml



#2 Decachlorobiphenyl  
 R.T.: 10.966 min  
 Delta R.T.: -0.006 min  
 Response: 1405406  
 Conc: 17.05 ng/ml

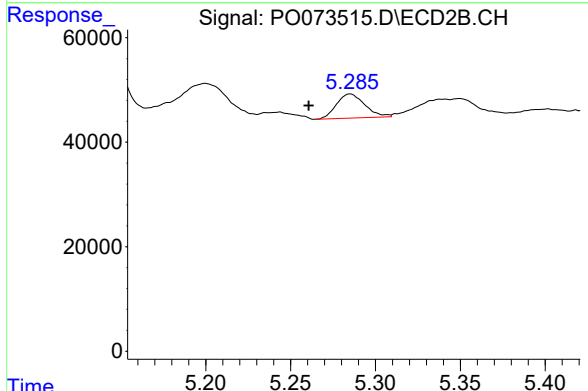


#2 Decachlorobiphenyl  
 R.T.: 9.272 min  
 Delta R.T.: -0.010 min  
 Response: 769185  
 Conc: 16.78 ng/ml

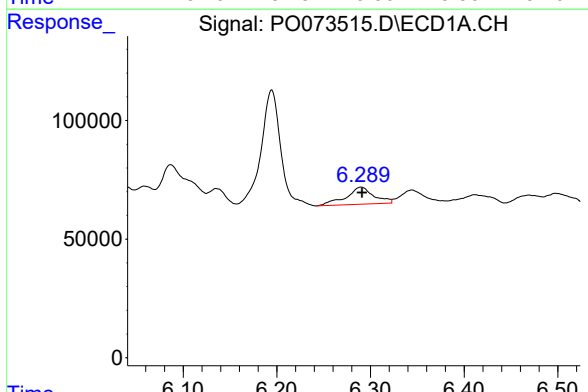


#3 AR-1016-1  
 R.T.: 6.290 min  
 Delta R.T.: 0.022 min  
 Response: 149165  
 Conc: 45.30 ng/ml

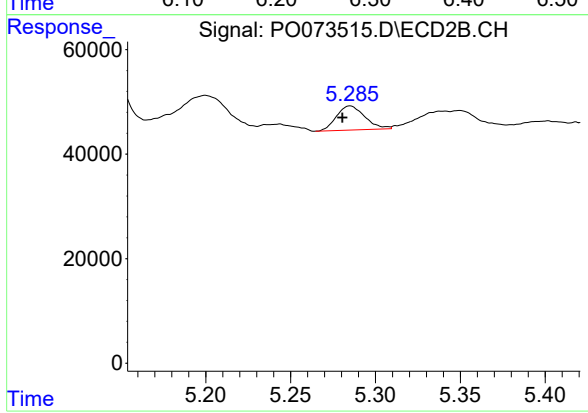
Instrument :  
 ECD\_O  
 ClientSampled :  
 OR-02-112020



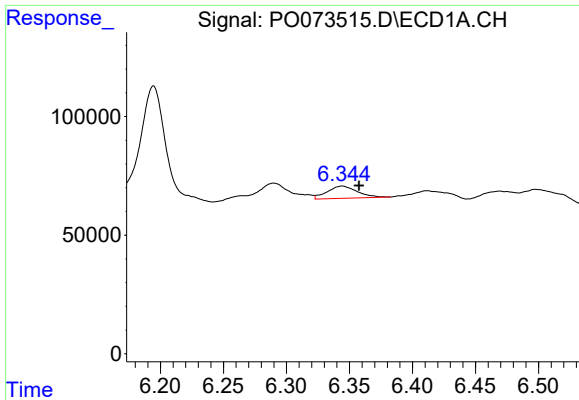
#3 AR-1016-1  
 R.T.: 5.285 min  
 Delta R.T.: 0.025 min  
 Response: 53728  
 Conc: 26.37 ng/ml



#4 AR-1016-2  
 R.T.: 6.290 min  
 Delta R.T.: -0.001 min  
 Response: 149165  
 Conc: 32.40 ng/ml



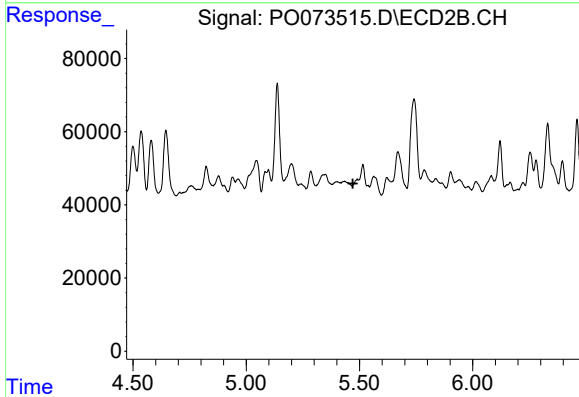
#4 AR-1016-2  
 R.T.: 5.285 min  
 Delta R.T.: 0.005 min  
 Response: 53728  
 Conc: 19.21 ng/ml



#5 AR-1016-3

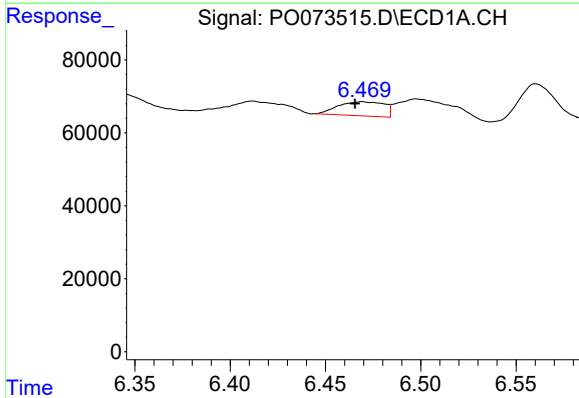
R.T.: 6.344 min  
 Delta R.T.: -0.013 min  
 Response: 85457  
 Conc: 31.21 ng/ml

Instrument :  
 ECD\_O  
 ClientSampleId :  
 OR-02-112020



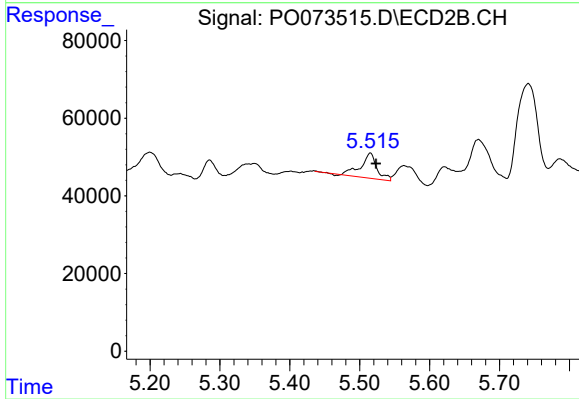
#5 AR-1016-3

R.T.: 0.000 min  
 Exp R.T. : 5.471 min  
 Response: 0  
 Conc: N.D.



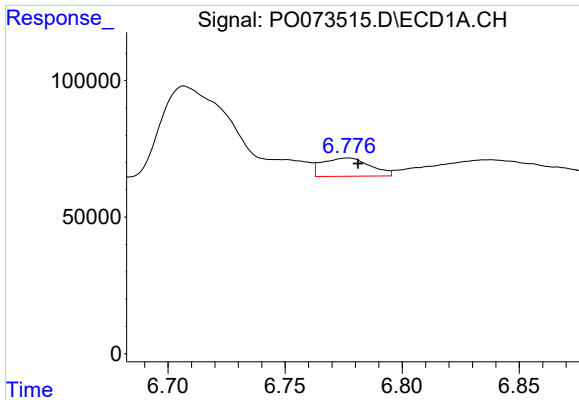
#6 AR-1016-4

R.T.: 6.469 min  
 Delta R.T.: 0.004 min  
 Response: 65098  
 Conc: 28.52 ng/ml



#6 AR-1016-4

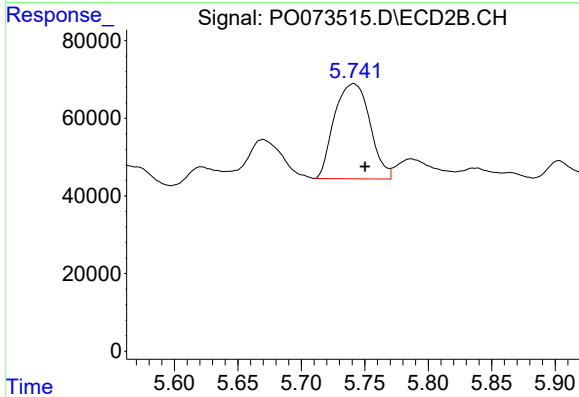
R.T.: 5.515 min  
 Delta R.T.: -0.008 min  
 Response: 104433  
 Conc: 87.87 ng/ml



#7 AR-1016-5

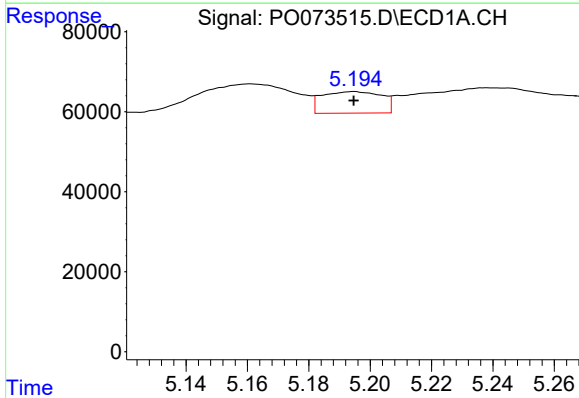
R.T.: 6.777 min  
 Delta R.T.: -0.004 min  
 Response: 95071  
 Conc: 42.28 ng/ml

Instrument :  
 ECD\_O  
 ClientSampleId :  
 OR-02-112020



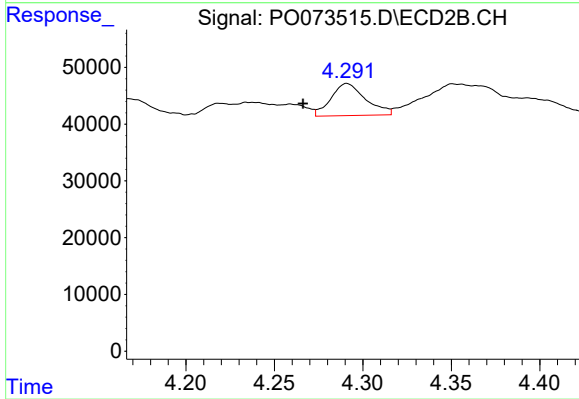
#7 AR-1016-5

R.T.: 5.741 min  
 Delta R.T.: -0.009 min  
 Response: 478926  
 Conc: 318.16 ng/ml



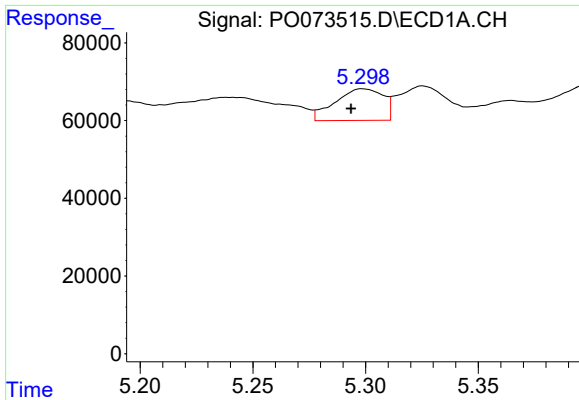
#8 AR-1221-1

R.T.: 5.194 min  
 Delta R.T.: 0.000 min  
 Response: 72497  
 Conc: 73.09 ng/ml



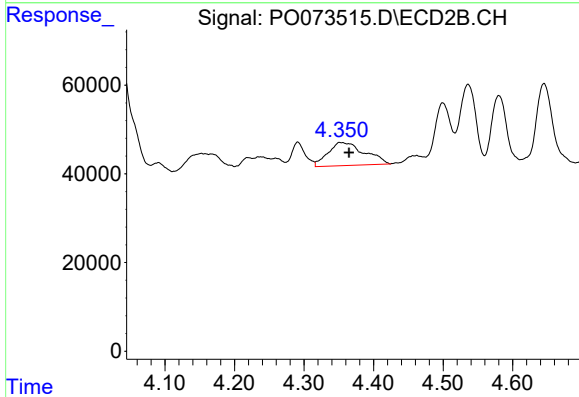
#8 AR-1221-1

R.T.: 4.291 min  
 Delta R.T.: 0.025 min  
 Response: 77165  
 Conc: 136.91 ng/ml

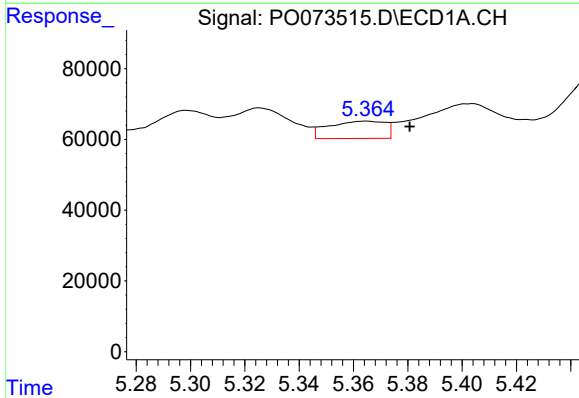


#9 AR-1221-2  
 R.T.: 5.299 min  
 Delta R.T.: 0.005 min  
 Response: 121338  
 Conc: 172.52 ng/ml

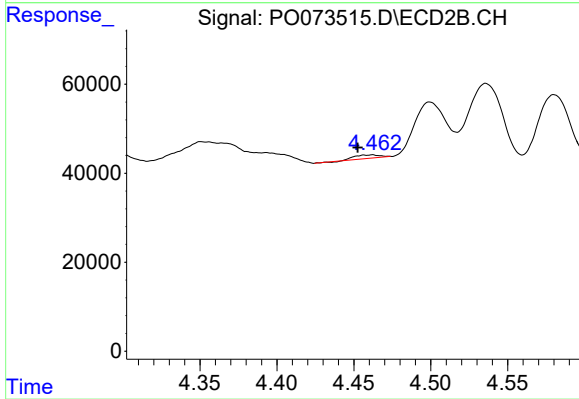
Instrument :  
 ECD\_O  
 ClientSampleId :  
 OR-02-112020



#9 AR-1221-2  
 R.T.: 4.351 min  
 Delta R.T.: -0.014 min  
 Response: 189166  
 Conc: 467.96 ng/ml

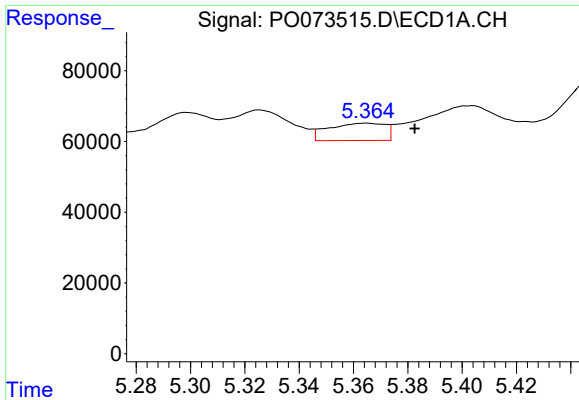


#10 AR-1221-3  
 R.T.: 5.365 min  
 Delta R.T.: -0.016 min  
 Response: 71242  
 Conc: 31.77 ng/ml



#10 AR-1221-3  
 R.T.: 4.462 min  
 Delta R.T.: 0.009 min  
 Response: 8579  
 Conc: 6.46 ng/ml

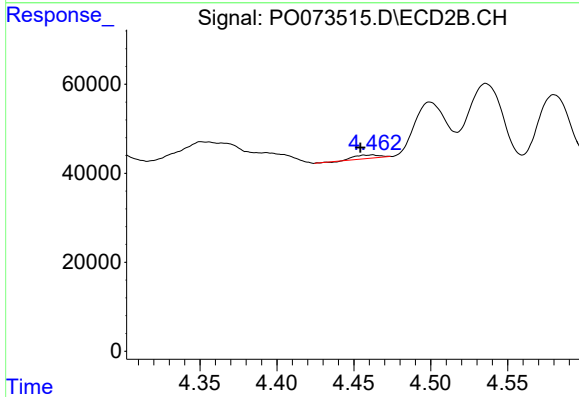




#11 AR-1232-1

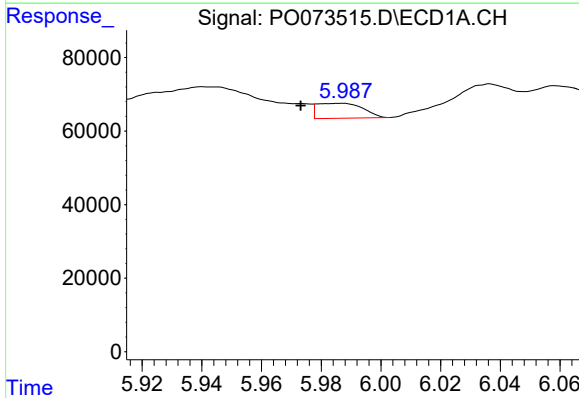
R.T.: 5.365 min  
 Delta R.T.: -0.018 min  
 Response: 71242  
 Conc: 38.60 ng/ml

**Instrument :**  
 ECD\_O  
**ClientSampled :**  
 OR-02-112020



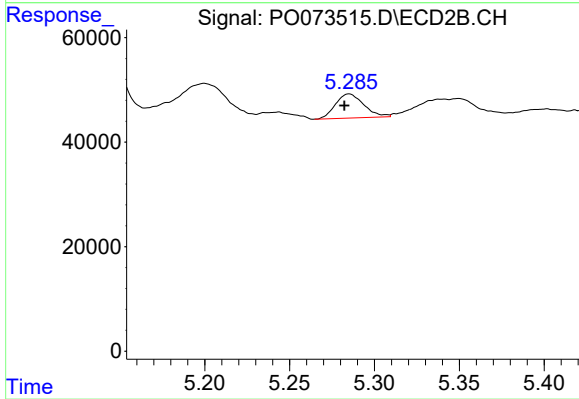
#11 AR-1232-1

R.T.: 4.462 min  
 Delta R.T.: 0.008 min  
 Response: 8579  
 Conc: 7.54 ng/ml



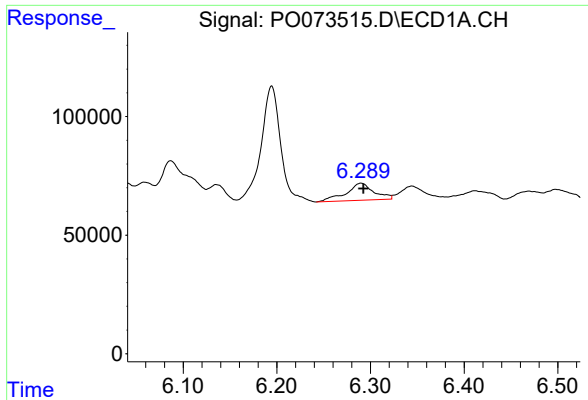
#12 AR-1232-2

R.T.: 5.987 min  
 Delta R.T.: 0.013 min  
 Response: 43232  
 Conc: 45.43 ng/ml



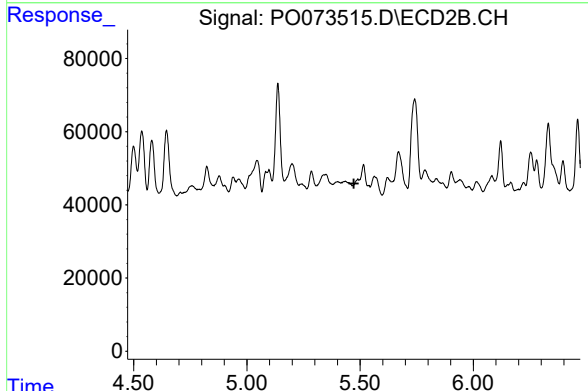
#12 AR-1232-2

R.T.: 5.285 min  
 Delta R.T.: 0.003 min  
 Response: 53728  
 Conc: 44.95 ng/ml

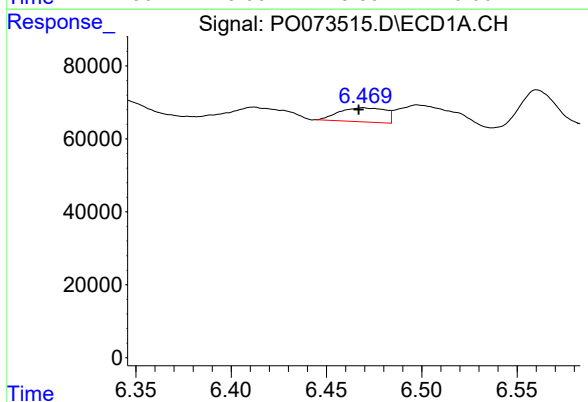


#13 AR-1232-3  
 R.T.: 6.290 min  
 Delta R.T.: -0.003 min  
 Response: 149165  
 Conc: 76.26 ng/ml

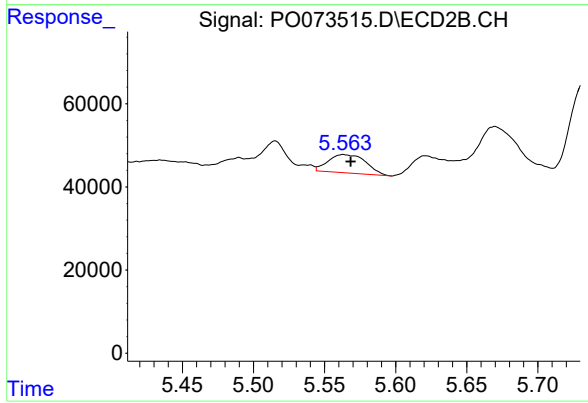
Instrument :  
 ECD\_O  
 ClientSampleId :  
 OR-02-112020



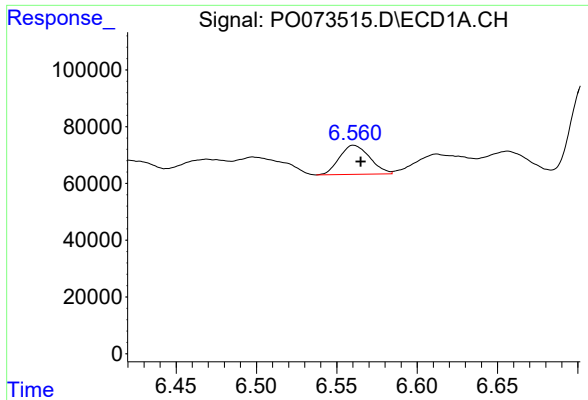
#13 AR-1232-3  
 R.T.: 0.000 min  
 Exp R.T. : 5.472 min  
 Response: 0  
 Conc: N.D.



#14 AR-1232-4  
 R.T.: 6.469 min  
 Delta R.T.: 0.002 min  
 Response: 65098  
 Conc: 65.84 ng/ml



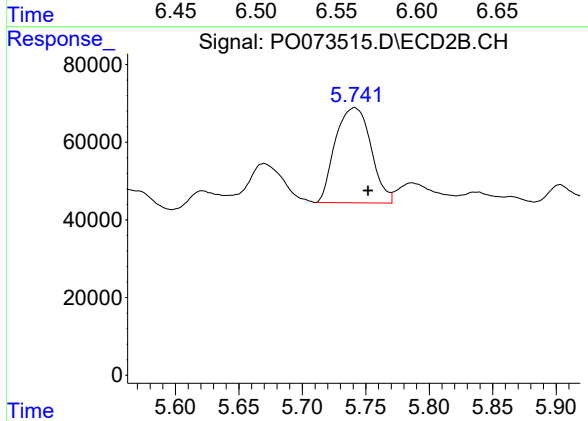
#14 AR-1232-4  
 R.T.: 5.564 min  
 Delta R.T.: -0.005 min  
 Response: 81307  
 Conc: 150.81 ng/ml



#15 AR-1232-5

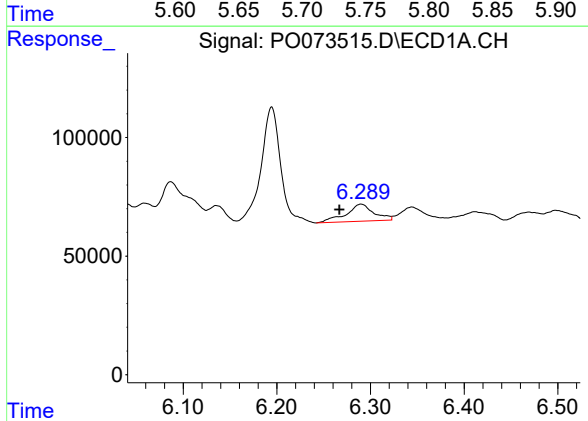
R.T.: 6.561 min  
 Delta R.T.: -0.004 min  
 Response: 134435  
 Conc: 199.68 ng/ml

Instrument :  
 ECD\_O  
 ClientSampleId :  
 OR-02-112020



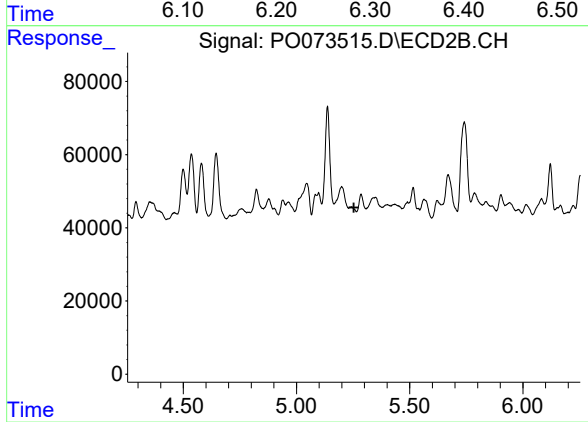
#15 AR-1232-5

R.T.: 5.741 min  
 Delta R.T.: -0.011 min  
 Response: 478926  
 Conc: 810.67 ng/ml



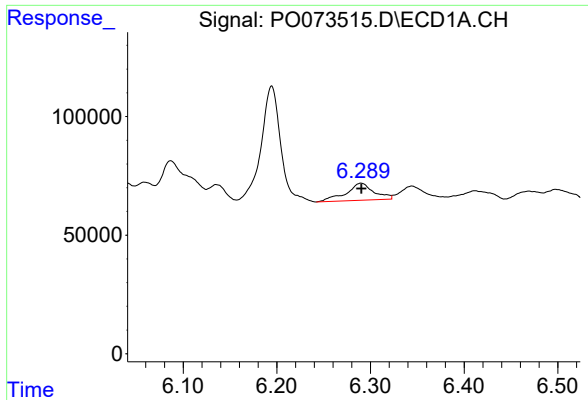
#16 AR-1242-1

R.T.: 6.290 min  
 Delta R.T.: 0.023 min  
 Response: 149165  
 Conc: 56.56 ng/ml



#16 AR-1242-1

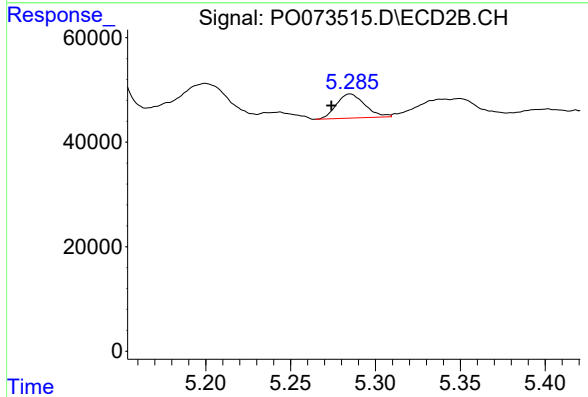
R.T.: 0.000 min  
 Exp R.T.: 5.254 min  
 Response: 0  
 Conc: N.D.



#17 AR-1242-2

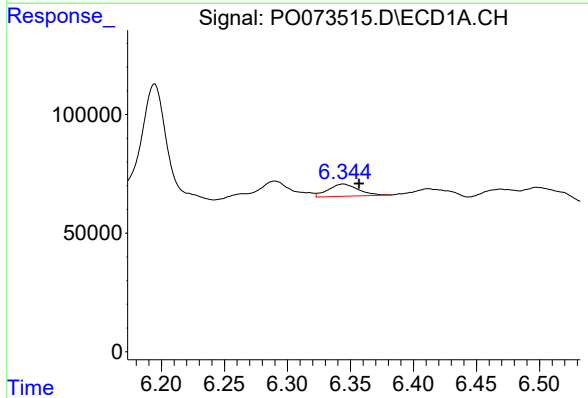
R.T.: 6.290 min  
 Delta R.T.: 0.000 min  
 Response: 149165  
 Conc: 40.81 ng/ml

**Instrument :**  
 ECD\_O  
**ClientSampleId :**  
 OR-02-112020



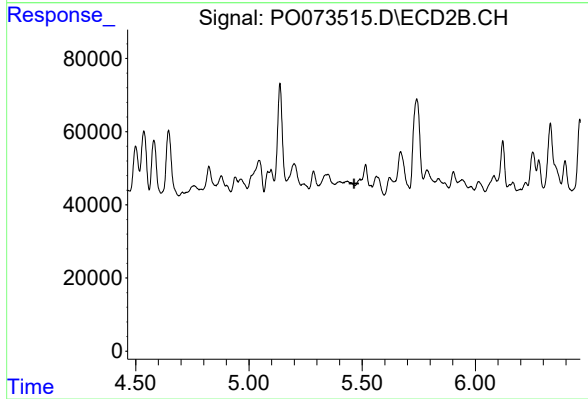
#17 AR-1242-2

R.T.: 5.285 min  
 Delta R.T.: 0.011 min  
 Response: 53728  
 Conc: 23.75 ng/ml



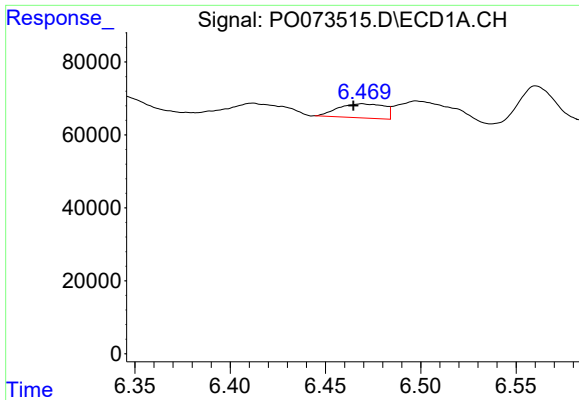
#18 AR-1242-3

R.T.: 6.344 min  
 Delta R.T.: -0.013 min  
 Response: 85457  
 Conc: 38.75 ng/ml



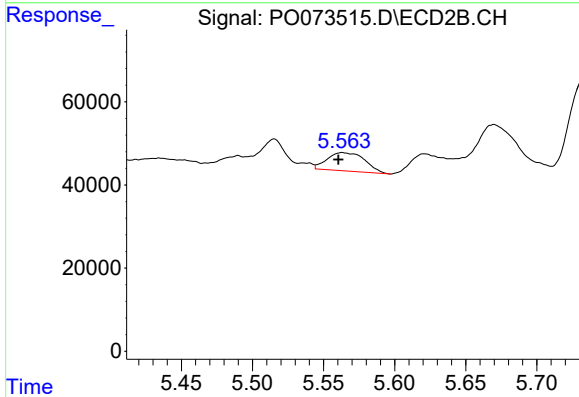
#18 AR-1242-3

R.T.: 0.000 min  
 Exp R.T. : 5.464 min  
 Response: 0  
 Conc: N.D.

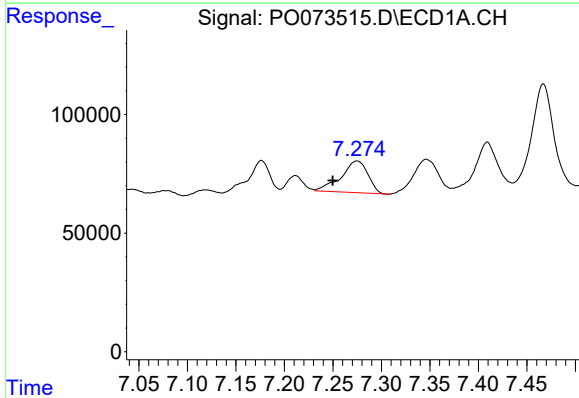


#19 AR-1242-4  
 R.T.: 6.469 min  
 Delta R.T.: 0.005 min  
 Response: 65098  
 Conc: 35.07 ng/ml

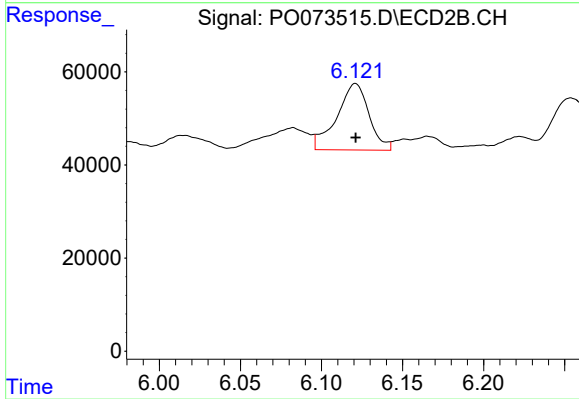
**Instrument :**  
 ECD\_O  
**ClientSampled :**  
 OR-02-112020



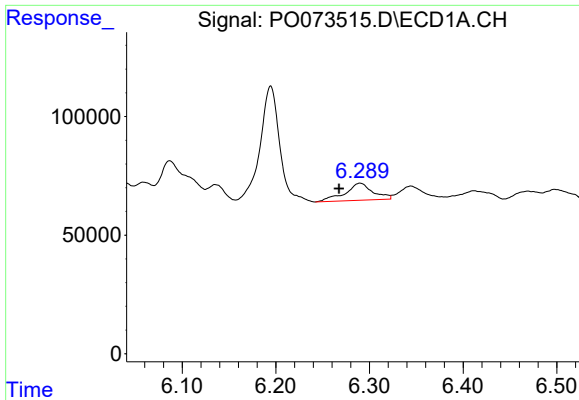
#19 AR-1242-4  
 R.T.: 5.564 min  
 Delta R.T.: 0.003 min  
 Response: 81307  
 Conc: 73.98 ng/ml



#20 AR-1242-5  
 R.T.: 7.275 min  
 Delta R.T.: 0.025 min  
 Response: 257304  
 Conc: 122.33 ng/ml

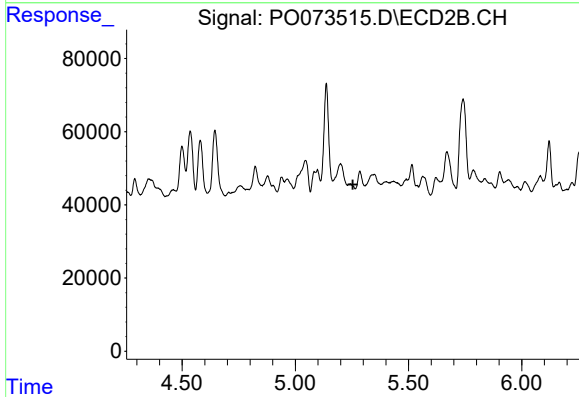


#20 AR-1242-5  
 R.T.: 6.121 min  
 Delta R.T.: 0.000 min  
 Response: 197946  
 Conc: 127.84 ng/ml

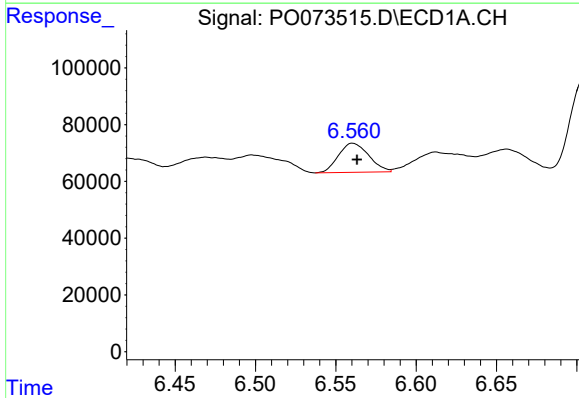


#21 AR-1248-1  
 R.T.: 6.290 min  
 Delta R.T.: 0.022 min  
 Response: 149165  
 Conc: 74.62 ng/ml

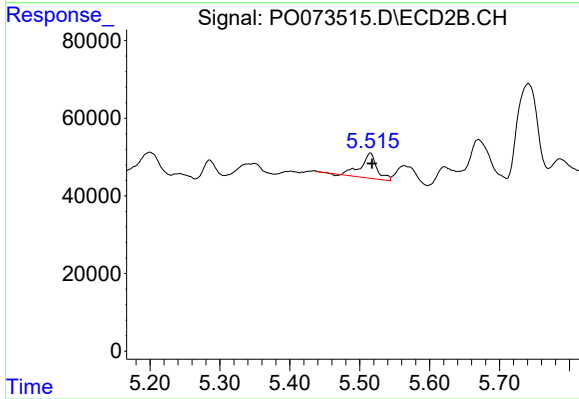
**Instrument :**  
 ECD\_O  
**ClientSampled :**  
 OR-02-112020



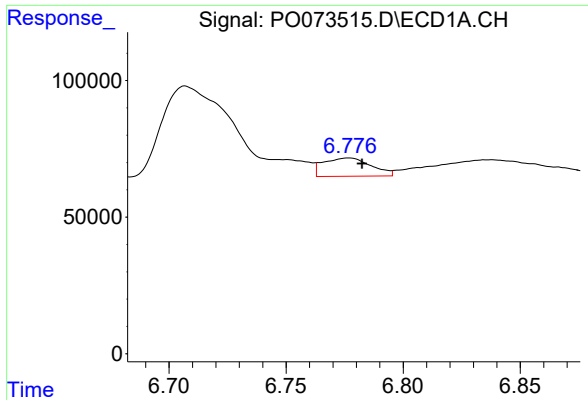
#21 AR-1248-1  
 R.T.: 0.000 min  
 Exp R.T. : 5.255 min  
 Response: 0  
 Conc: N.D.



#22 AR-1248-2  
 R.T.: 6.561 min  
 Delta R.T.: -0.003 min  
 Response: 134435  
 Conc: 52.00 ng/ml

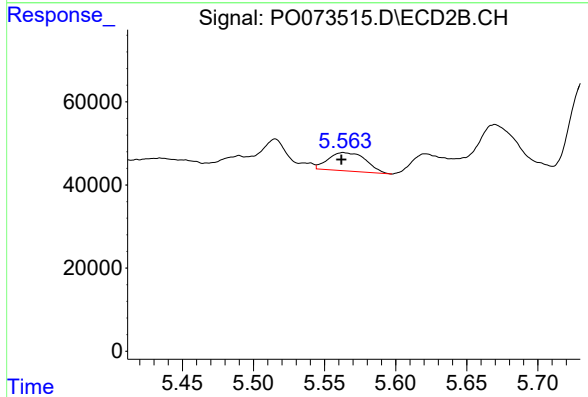


#22 AR-1248-2  
 R.T.: 5.515 min  
 Delta R.T.: -0.002 min  
 Response: 104433  
 Conc: 61.75 ng/ml

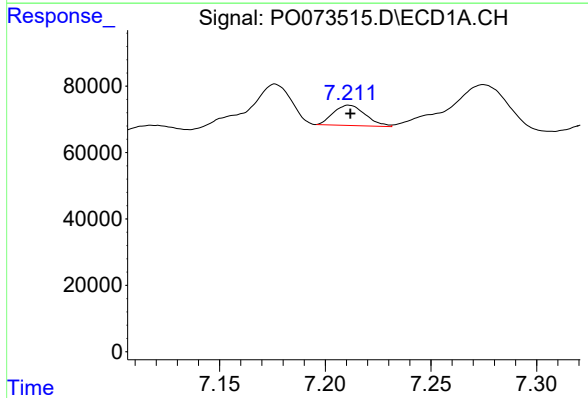


#23 AR-1248-3  
 R.T.: 6.777 min  
 Delta R.T.: -0.006 min  
 Response: 95071  
 Conc: 31.02 ng/ml

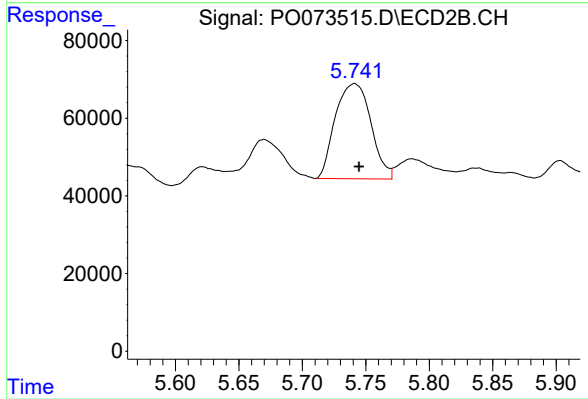
Instrument :  
 ECD\_O  
 ClientSampleId :  
 OR-02-112020



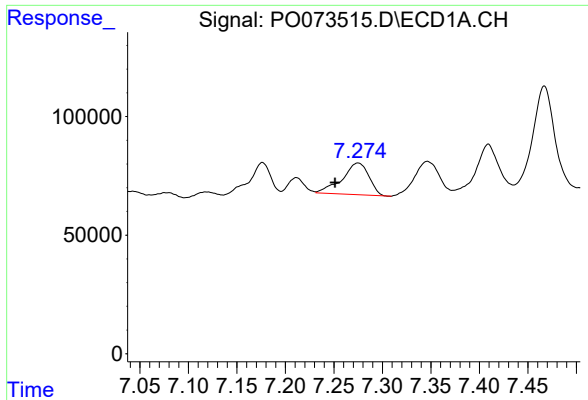
#23 AR-1248-3  
 R.T.: 5.564 min  
 Delta R.T.: 0.002 min  
 Response: 81307  
 Conc: 47.65 ng/ml



#24 AR-1248-4  
 R.T.: 7.211 min  
 Delta R.T.: 0.000 min  
 Response: 64459  
 Conc: 17.28 ng/ml



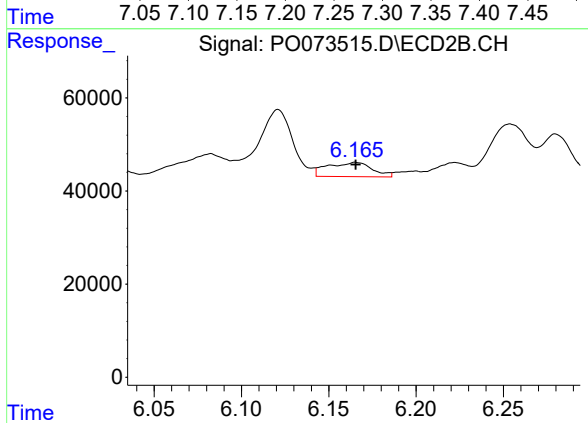
#24 AR-1248-4  
 R.T.: 5.741 min  
 Delta R.T.: -0.004 min  
 Response: 478926  
 Conc: 232.98 ng/ml



#25 AR-1248-5

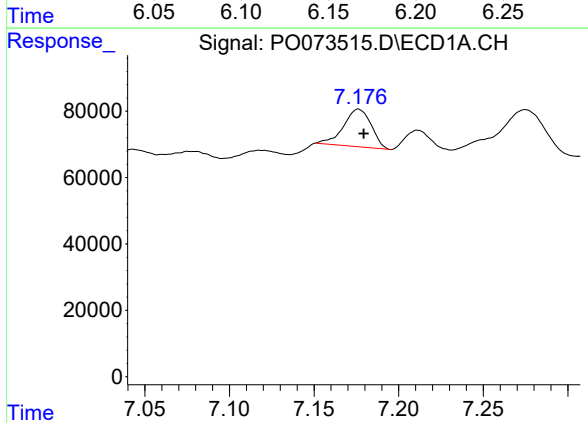
R.T.: 7.275 min  
 Delta R.T.: 0.024 min  
 Response: 257304  
 Conc: 71.91 ng/ml

Instrument :  
 ECD\_O  
 ClientSampleId :  
 OR-02-112020



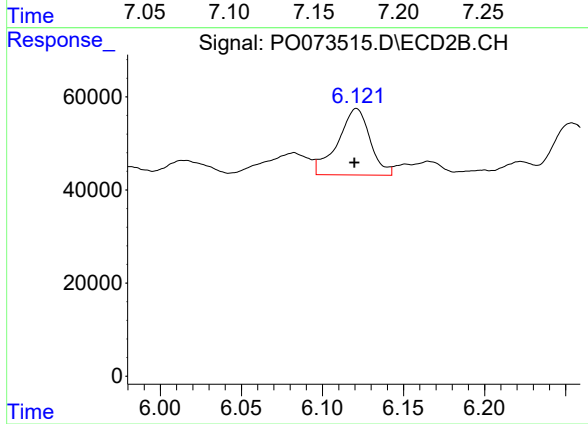
#25 AR-1248-5

R.T.: 6.166 min  
 Delta R.T.: 0.000 min  
 Response: 54970  
 Conc: 24.76 ng/ml



#26 AR-1254-1

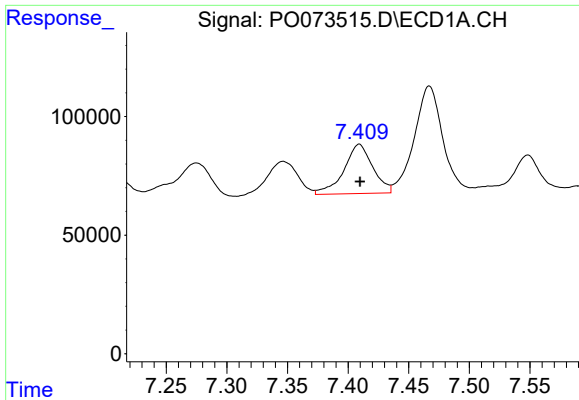
R.T.: 7.176 min  
 Delta R.T.: -0.003 min  
 Response: 128550  
 Conc: 37.17 ng/ml



#26 AR-1254-1

R.T.: 6.121 min  
 Delta R.T.: 0.001 min  
 Response: 197946  
 Conc: 63.57 ng/ml

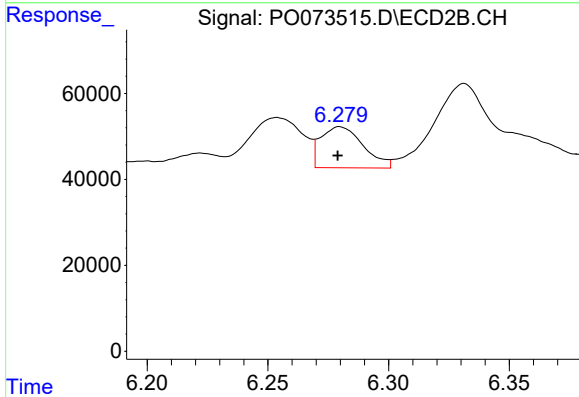




#27 AR-1254-2

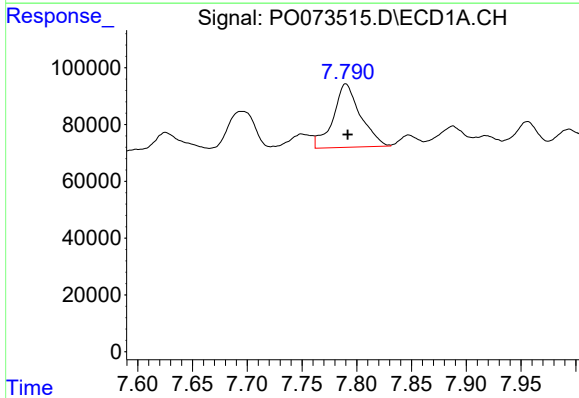
R.T.: 7.409 min  
 Delta R.T.: 0.000 min  
 Response: 345047  
 Conc: 63.34 ng/ml

**Instrument :**  
 ECD\_O  
**ClientSampleId :**  
 OR-02-112020



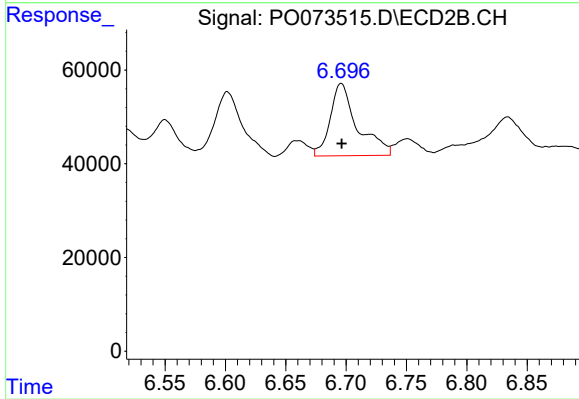
#27 AR-1254-2

R.T.: 6.280 min  
 Delta R.T.: 0.001 min  
 Response: 116718  
 Conc: 42.75 ng/ml



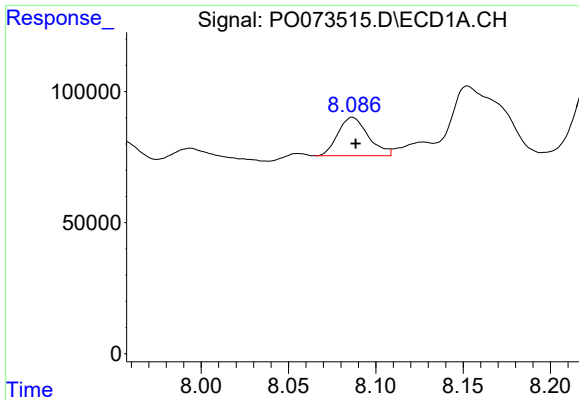
#28 AR-1254-3

R.T.: 7.790 min  
 Delta R.T.: -0.002 min  
 Response: 387158  
 Conc: 68.31 ng/ml



#28 AR-1254-3

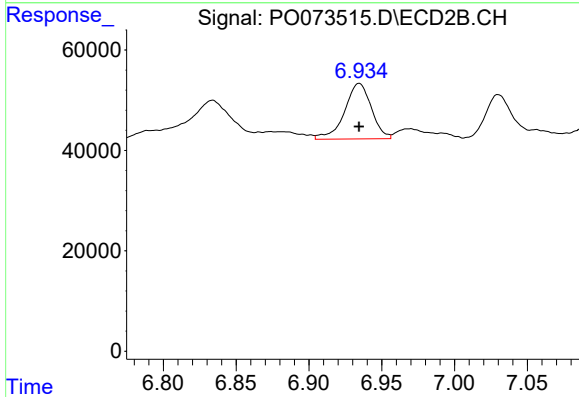
R.T.: 6.696 min  
 Delta R.T.: 0.000 min  
 Response: 242039  
 Conc: 57.23 ng/ml



#29 AR-1254-4

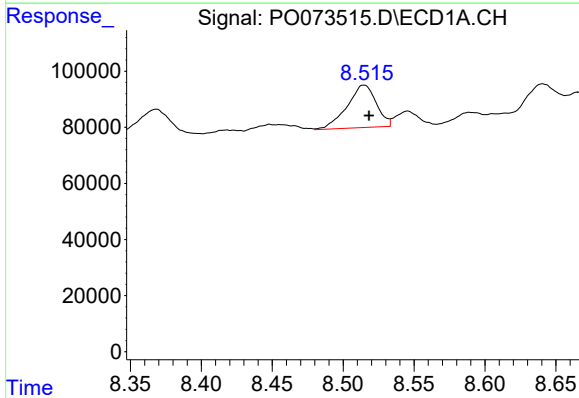
R.T.: 8.087 min  
 Delta R.T.: -0.002 min  
 Response: 176980  
 Conc: 36.58 ng/ml

Instrument :  
 ECD\_O  
 ClientSampleId :  
 OR-02-112020



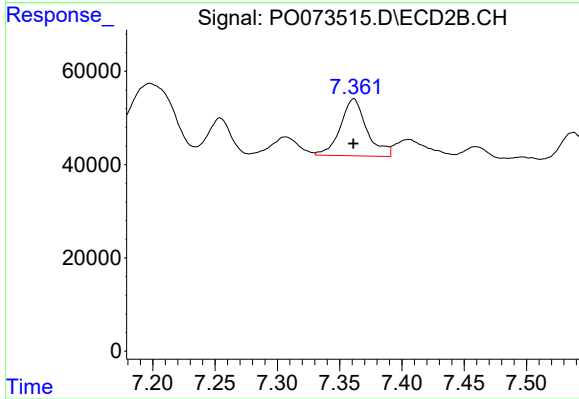
#29 AR-1254-4

R.T.: 6.934 min  
 Delta R.T.: 0.000 min  
 Response: 141939  
 Conc: 49.16 ng/ml



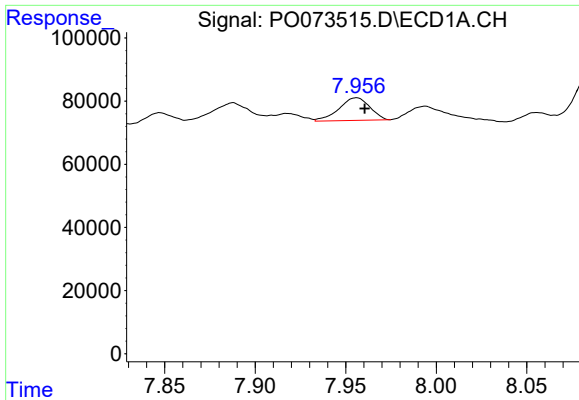
#30 AR-1254-5

R.T.: 8.515 min  
 Delta R.T.: -0.004 min  
 Response: 216373  
 Conc: 45.45 ng/ml



#30 AR-1254-5

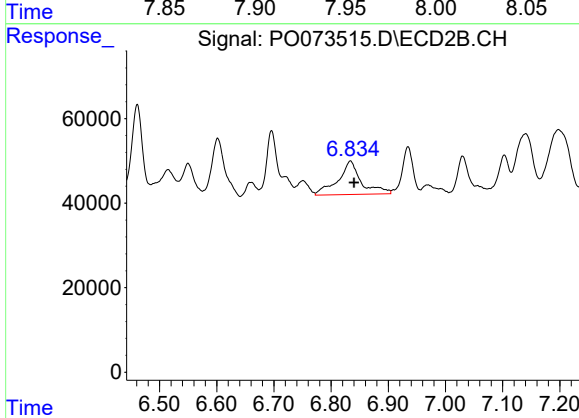
R.T.: 7.361 min  
 Delta R.T.: 0.000 min  
 Response: 180970  
 Conc: 49.00 ng/ml



#31 AR-1260-1

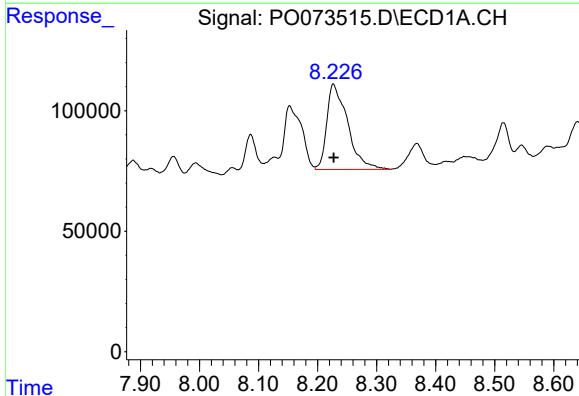
R.T.: 7.956 min  
 Delta R.T.: -0.005 min  
 Response: 84952  
 Conc: 21.05 ng/ml

Instrument :  
 ECD\_O  
 ClientSampleId :  
 OR-02-112020



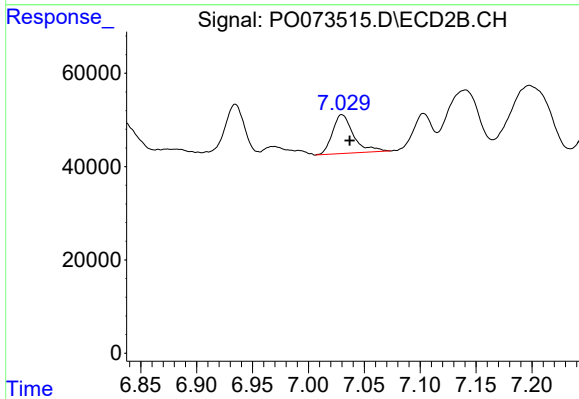
#31 AR-1260-1

R.T.: 6.834 min  
 Delta R.T.: -0.007 min  
 Response: 224512  
 Conc: 83.56 ng/ml



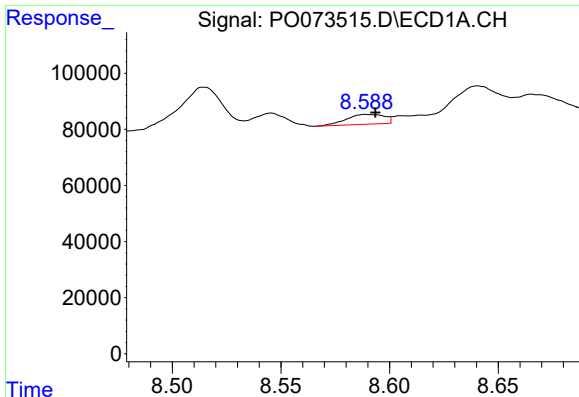
#32 AR-1260-2

R.T.: 8.227 min  
 Delta R.T.: 0.000 min  
 Response: 869677  
 Conc: 158.24 ng/ml



#32 AR-1260-2

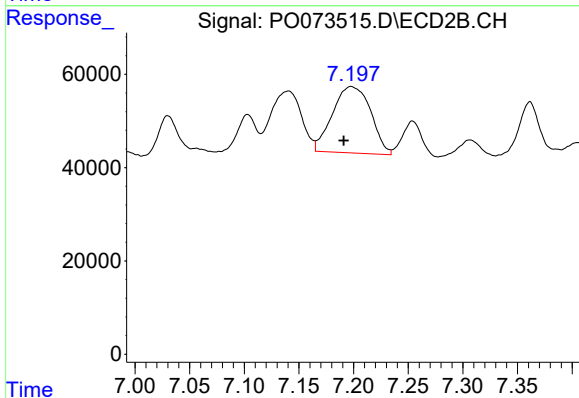
R.T.: 7.030 min  
 Delta R.T.: -0.007 min  
 Response: 109110  
 Conc: 32.71 ng/ml



#33 AR-1260-3

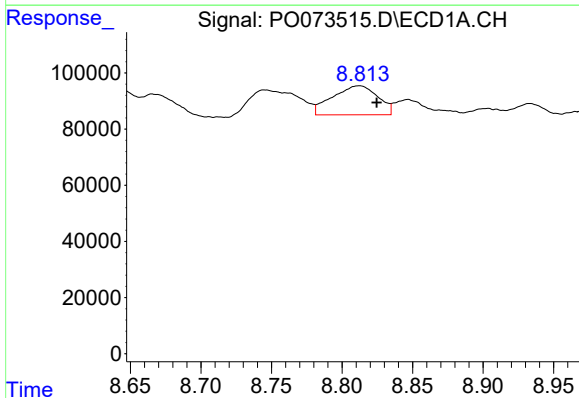
R.T.: 8.589 min  
 Delta R.T.: -0.004 min  
 Response: 42586  
 Conc: 9.60 ng/ml

Instrument :  
 ECD\_O  
 ClientSampleId :  
 OR-02-112020



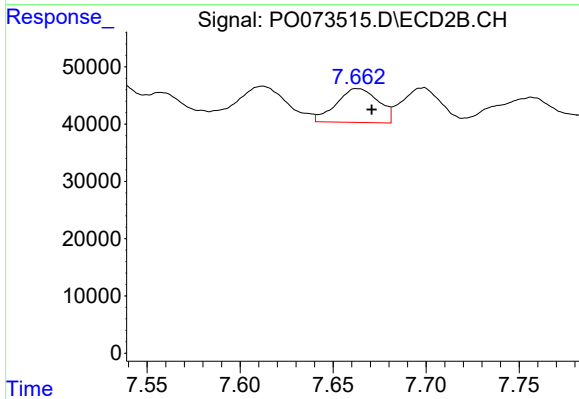
#33 AR-1260-3

R.T.: 7.198 min  
 Delta R.T.: 0.007 min  
 Response: 346917  
 Conc: 112.30 ng/ml



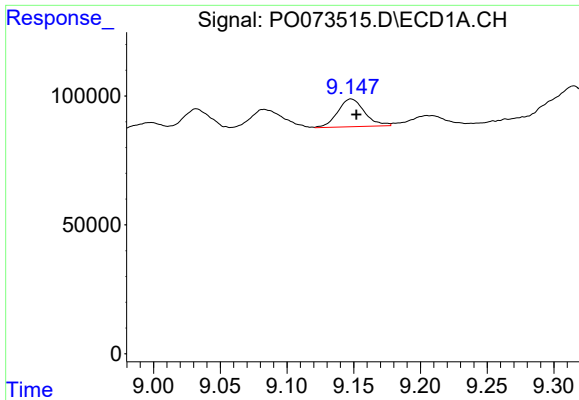
#34 AR-1260-4

R.T.: 8.812 min  
 Delta R.T.: -0.012 min  
 Response: 231731  
 Conc: 53.69 ng/ml



#34 AR-1260-4

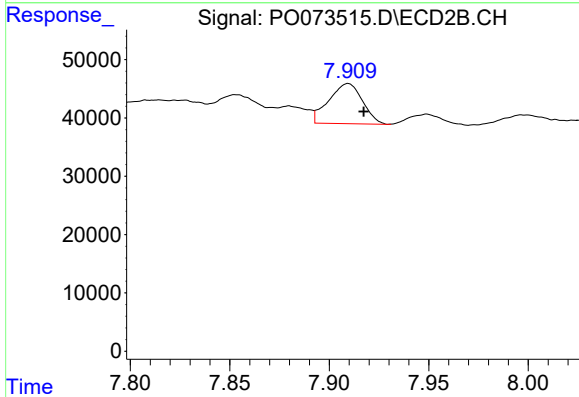
R.T.: 7.663 min  
 Delta R.T.: -0.007 min  
 Response: 93073  
 Conc: 37.82 ng/ml



#35 AR-1260-5

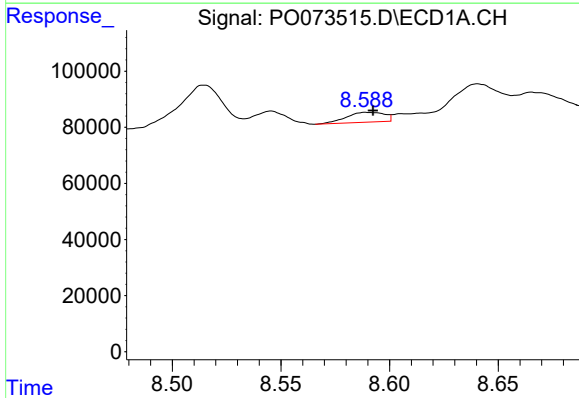
R.T.: 9.148 min  
 Delta R.T.: -0.004 min  
 Response: 151686  
 Conc: 15.36 ng/ml

Instrument :  
 ECD\_O  
 ClientSampleId :  
 OR-02-112020



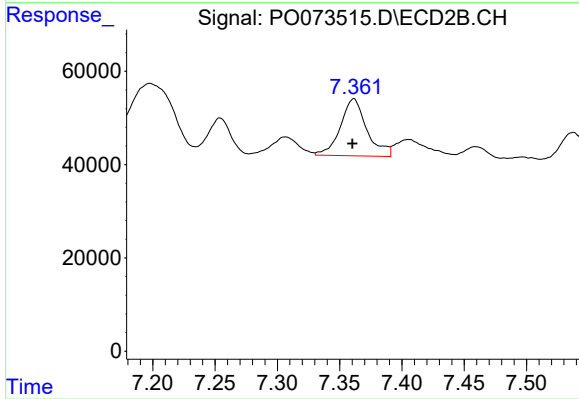
#35 AR-1260-5

R.T.: 7.909 min  
 Delta R.T.: -0.008 min  
 Response: 81130  
 Conc: 13.10 ng/ml



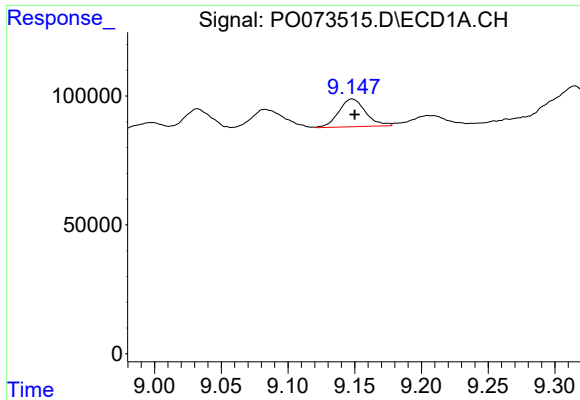
#36 AR-1262-1

R.T.: 8.589 min  
 Delta R.T.: -0.003 min  
 Response: 42586  
 Conc: 6.82 ng/ml



#36 AR-1262-1

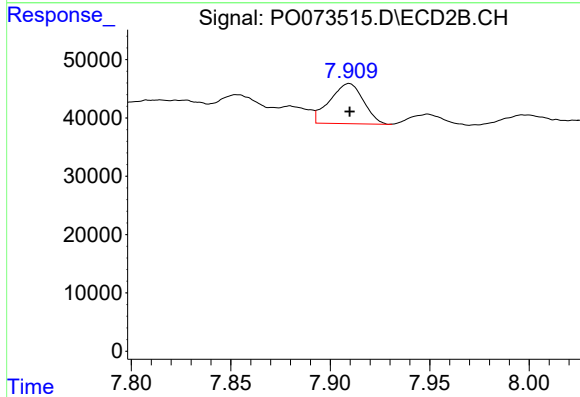
R.T.: 7.361 min  
 Delta R.T.: 0.000 min  
 Response: 180970  
 Conc: 93.38 ng/ml



#37 AR-1262-2

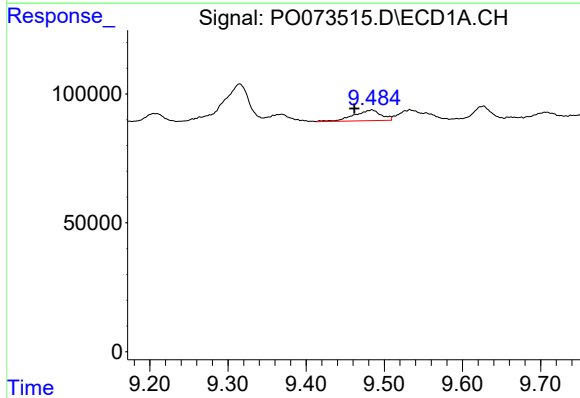
R.T.: 9.148 min  
 Delta R.T.: -0.002 min  
 Response: 151686  
 Conc: 14.02 ng/ml

Instrument :  
 ECD\_O  
 ClientSampleId :  
 OR-02-112020



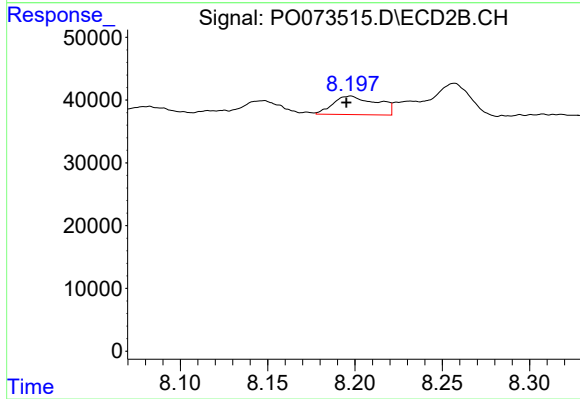
#37 AR-1262-2

R.T.: 7.909 min  
 Delta R.T.: 0.000 min  
 Response: 81130  
 Conc: 12.37 ng/ml



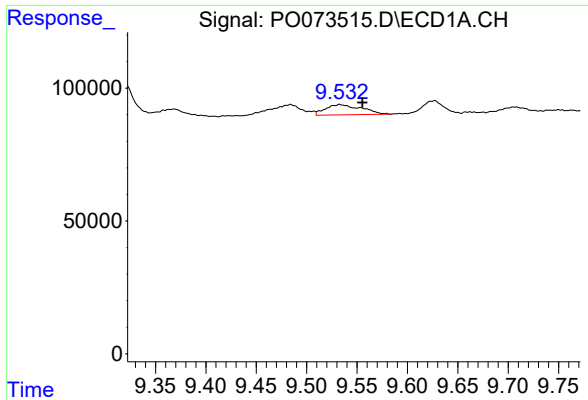
#38 AR-1262-3

R.T.: 9.484 min  
 Delta R.T.: 0.022 min  
 Response: 100218  
 Conc: 13.65 ng/ml



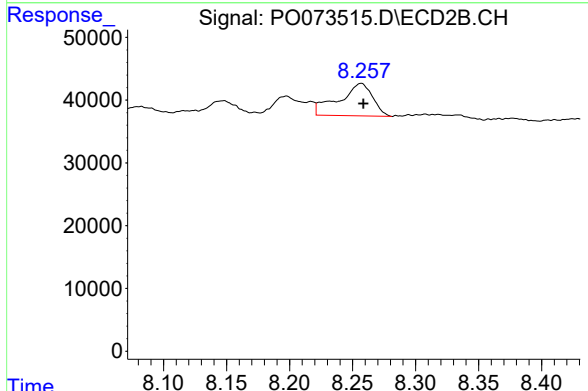
#38 AR-1262-3

R.T.: 8.197 min  
 Delta R.T.: 0.002 min  
 Response: 51740  
 Conc: 19.18 ng/ml

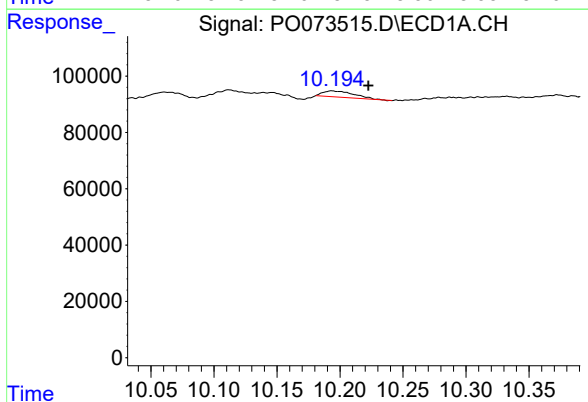


#39 AR-1262-4  
 R.T.: 9.533 min  
 Delta R.T.: -0.022 min  
 Response: 95692  
 Conc: 17.39 ng/ml

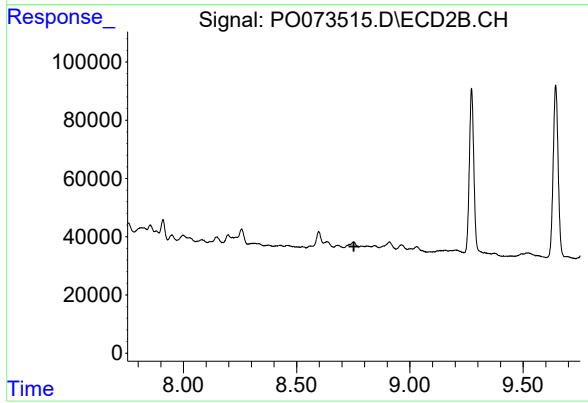
Instrument :  
 ECD\_O  
 ClientSampleId :  
 OR-02-112020



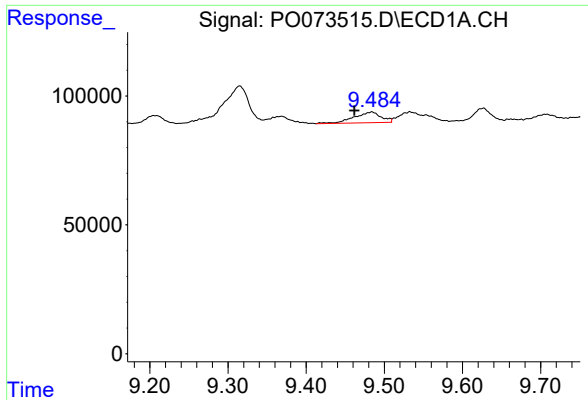
#39 AR-1262-4  
 R.T.: 8.257 min  
 Delta R.T.: -0.002 min  
 Response: 96206  
 Conc: 20.15 ng/ml



#40 AR-1262-5  
 R.T.: 10.194 min  
 Delta R.T.: -0.029 min  
 Response: 36528  
 Conc: 9.38 ng/ml

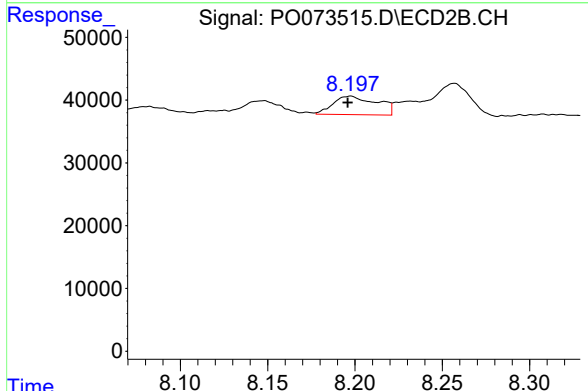


#40 AR-1262-5  
 R.T.: 0.000 min  
 Exp R.T. : 8.753 min  
 Response: 0  
 Conc: N.D.

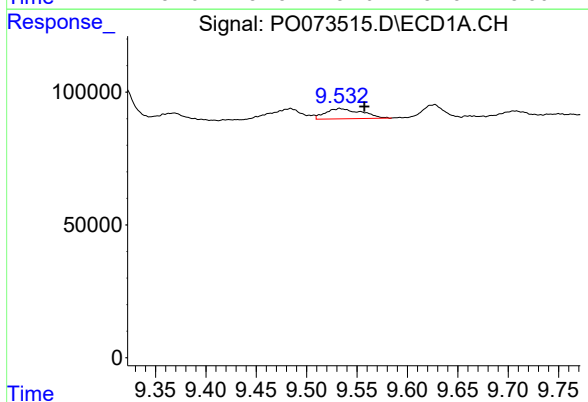


#41 AR-1268-1  
 R.T.: 9.484 min  
 Delta R.T.: 0.022 min  
 Response: 100218  
 Conc: 7.17 ng/ml

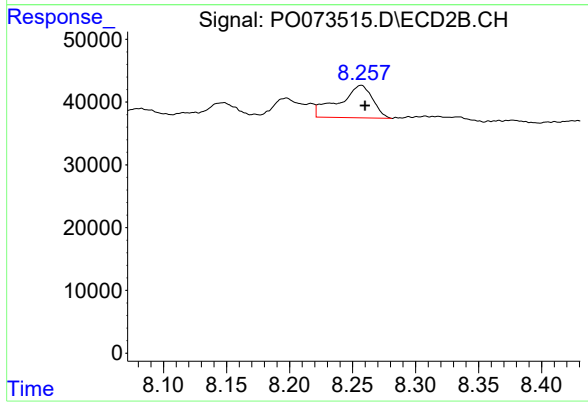
Instrument :  
 ECD\_O  
 ClientSampleId :  
 OR-02-112020



#41 AR-1268-1  
 R.T.: 8.197 min  
 Delta R.T.: 0.001 min  
 Response: 51740  
 Conc: 6.35 ng/ml

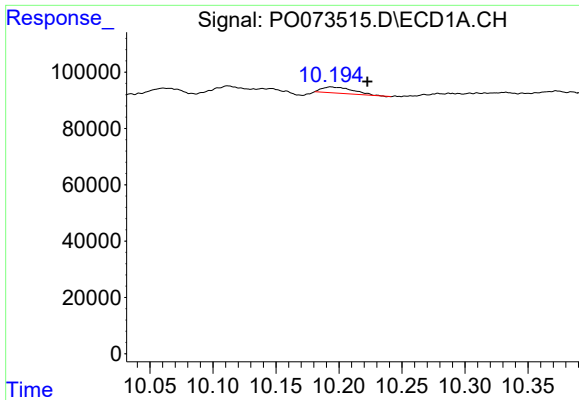


#42 AR-1268-2  
 R.T.: 9.533 min  
 Delta R.T.: -0.024 min  
 Response: 95692  
 Conc: 7.88 ng/ml



#42 AR-1268-2  
 R.T.: 8.257 min  
 Delta R.T.: -0.003 min  
 Response: 96206  
 Conc: 13.17 ng/ml

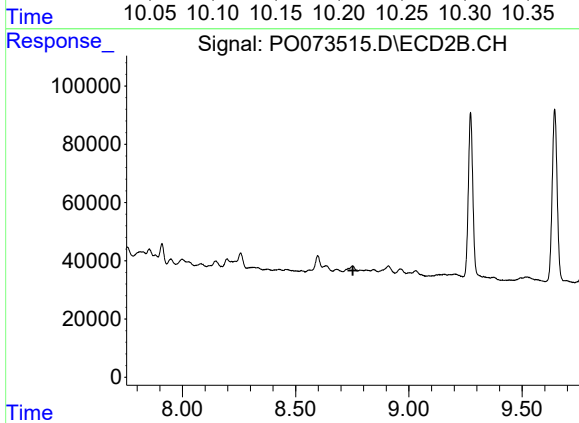




#44 AR-1268-4

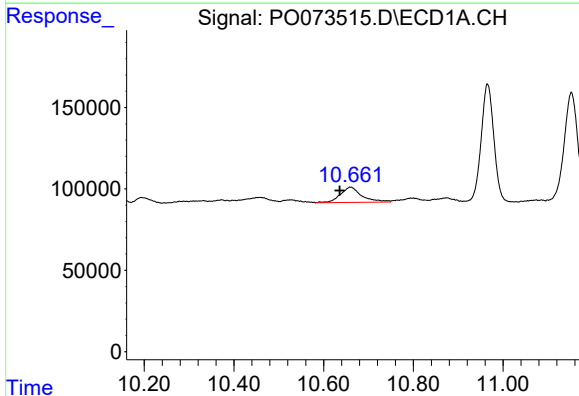
R.T.: 10.194 min  
 Delta R.T.: -0.029 min  
 Response: 36528  
 Conc: 8.10 ng/ml

Instrument :  
 ECD\_O  
 ClientSampleId :  
 OR-02-112020



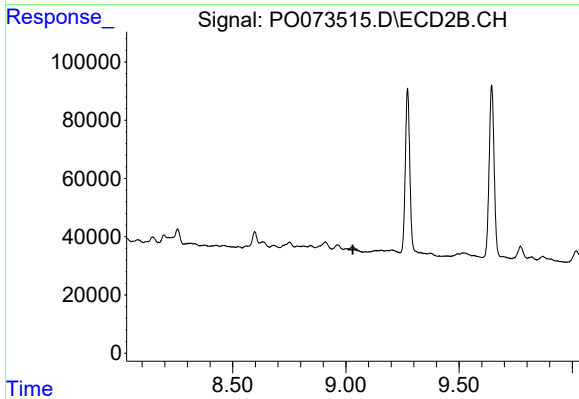
#44 AR-1268-4

R.T.: 0.000 min  
 Exp R.T. : 8.753 min  
 Response: 0  
 Conc: N.D.



#45 AR-1268-5

R.T.: 10.660 min  
 Delta R.T.: 0.024 min  
 Response: 311133  
 Conc: 9.78 ng/ml



#45 AR-1268-5

R.T.: 0.000 min  
 Exp R.T. : 9.031 min  
 Response: 0  
 Conc: N.D.