

Data Path : Z:\pestpcbsrv\HPCHEM1\ECD\_0\Data\PO112420\  
 Data File : PO073516.D  
 Signal(s) : Signal #1: ECD1A.CH Signal #2: ECD2B.CH  
 Acq On : 24 Nov 2020 15:30  
 Operator : DD\AJ  
 Sample : L4592-01  
 Misc :  
 ALS Vial : 18 Sample Multiplier: 1

Instrument :  
 ECD\_0  
 ClientSampled :

Integration File signal 1: autoint1.e  
 Integration File signal 2: autoint2.e  
 Quant Time: Nov 25 10:33:10 2020  
 Quant Method : Z:\pestpcbsrv\HPCHEM1\ECD\_0\methods\PO112320.M  
 Quant Title : GC EXTRACTABLES  
 QLast Update : Wed Nov 25 10:04:26 2020  
 Response via : Initial Calibration  
 Integrator: ChemStation 6890 Scale Mode: Small noise peaks clipped

Volume Inj. : 2 µl  
 Signal #1 Phase : ZB-MR2 Signal #2 Phase: ZB-MR2  
 Signal #1 Info : 30Mx0.32mmx 0.50µ Signal #2 Info : 30M x 0.32mm x 0.25µm

	Compound	RT#1	RT#2	Resp#1	Resp#2	ng/ml	ng/ml
-----							
System Monitoring Compounds							
1)	SA Tetrachlo...	4.942	4.007	1322439	930945	15.809	18.988
2)	SA Decachlor...	10.966	9.273	1234198	708957	14.969	15.462
Target Compounds							
8)	L2 AR-1221-1	5.195	0.000	70436	0	71.008	N.D. #
9)	L2 AR-1221-2	5.299	4.348f	38956	34665	55.388	85.754 #
20)	L4 AR-1242-5	7.211f	6.124	101209	30385	48.118	19.624 #
24)	L5 AR-1248-4	7.211	0.000	101209	0	27.132	N.D. #
26)	L6 AR-1254-1	0.000	6.124	0	30385	N.D.	9.758 #
27)	L6 AR-1254-2	7.417	0.000	133512	0	24.507	N.D. #
28)	L6 AR-1254-3	7.806	0.000	50621	0	8.932	N.D. #
30)	L6 AR-1254-5	8.542f	7.361	183069	82671	38.457	22.385 #
32)	L7 AR-1260-2	8.222	7.060f	103266	29044	18.790	8.708 #
34)	L7 AR-1260-4	8.809f	0.000	11744	0	2.721	N.D. #
35)	L7 AR-1260-5	9.147	0.000	30424	0	3.081	N.D. #
36)	L8 AR-1262-1	0.000	7.361	0	82671	N.D.	42.659 #
37)	L8 AR-1262-2	9.147	0.000	30424	0	2.813	N.D. #
38)	L8 AR-1262-3	9.489f	0.000	77547	0	10.565	N.D. #
39)	L8 AR-1262-4	9.534f	8.261	67112	95202	12.196	19.939 #
41)	L9 AR-1268-1	9.489f	0.000	77547	0	5.552	N.D. #
42)	L9 AR-1268-2	9.534f	8.261	67112	95202	5.524	13.035 #
45)	L9 AR-1268-5	10.658f	0.000	110161	0	3.461	N.D. #

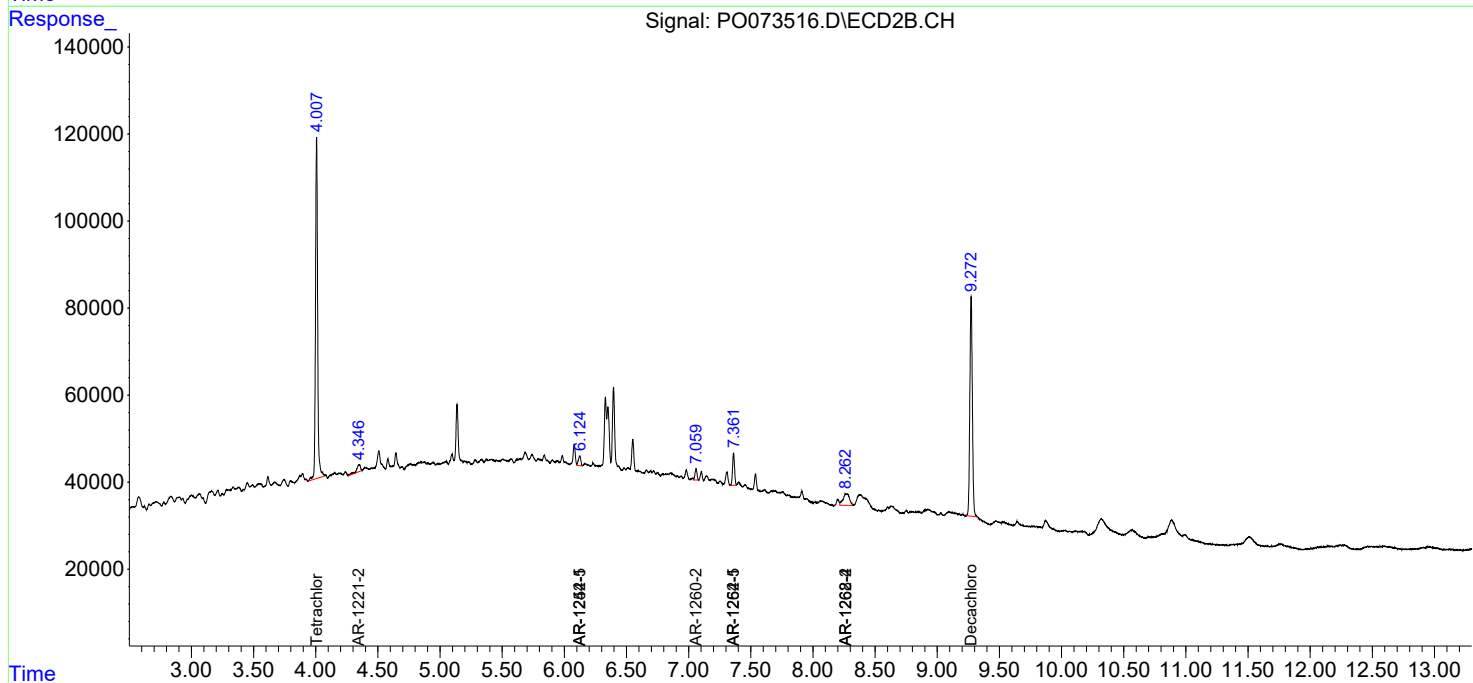
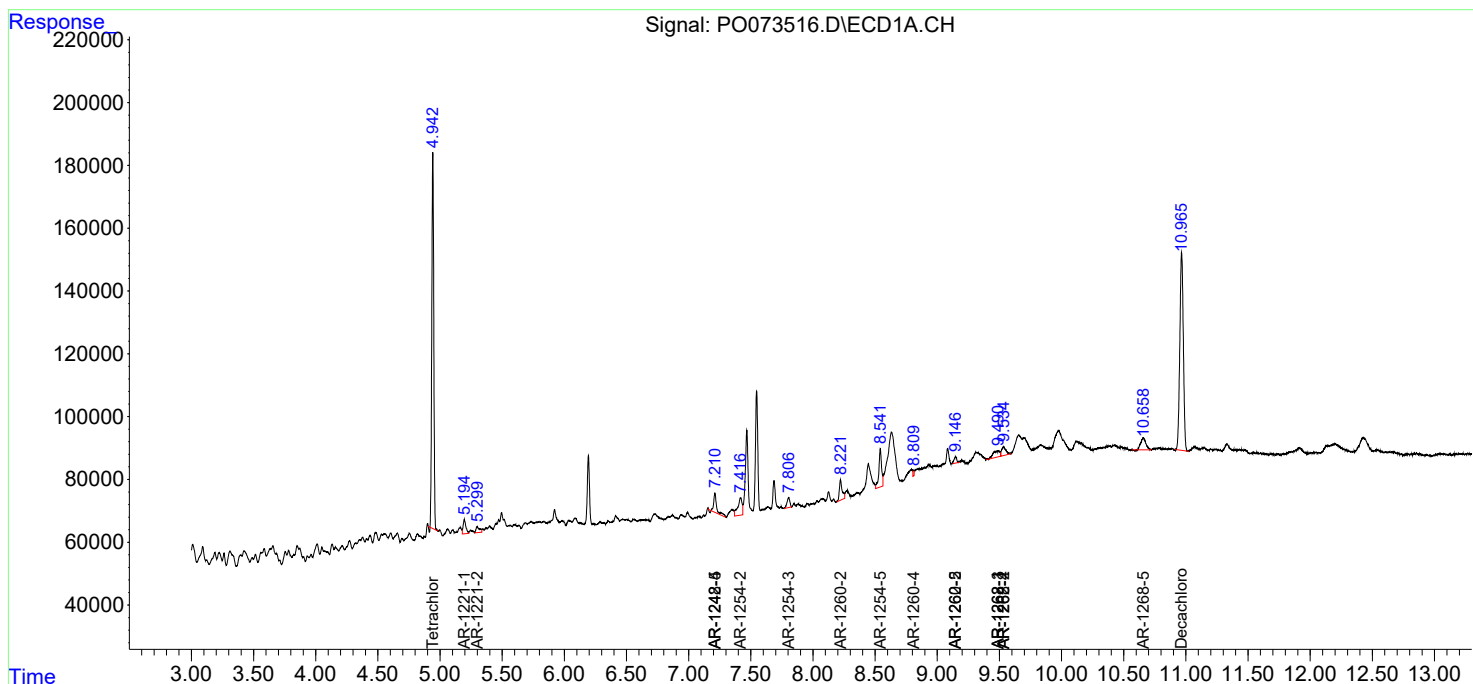
(f)=RT Delta > 1/2 Window (#)=Amounts differ by > 25% (m)=manual int.

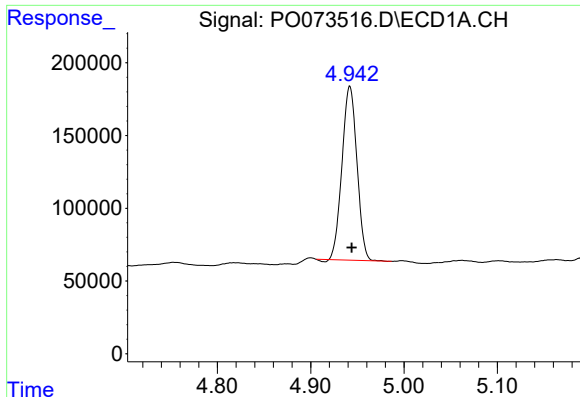
Data Path : Z:\pestpcbsrv\HPCHEM1\ECD\_0\Data\PO112420\  
 Data File : PO073516.D  
 Signal(s) : Signal #1: ECD1A.CH Signal #2: ECD2B.CH  
 Acq On : 24 Nov 2020 15:30  
 Operator : DD\AJ  
 Sample : L4592-01  
 Misc :  
 ALS Vial : 18 Sample Multiplier: 1

Instrument :  
 ECD\_O  
 ClientSampled :

Integration File signal 1: autoint1.e  
 Integration File signal 2: autoint2.e  
 Quant Time: Nov 25 10:33:10 2020  
 Quant Method : Z:\pestpcbsrv\HPCHEM1\ECD\_0\methods\PO112320.M  
 Quant Title : GC EXTRACTABLES  
 QLast Update : Wed Nov 25 10:04:26 2020  
 Response via : Initial Calibration  
 Integrator: ChemStation 6890 Scale Mode: Small noise peaks clipped

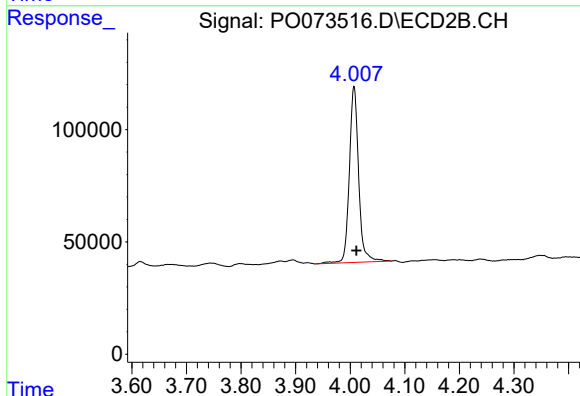
Volume Inj. : 2 µl  
 Signal #1 Phase : ZB-MR1 Signal #2 Phase: ZB-MR2  
 Signal #1 Info : 30Mx0.32mmx 0.50µ Signal #2 Info : 30M x 0.32mm x 0.25µm



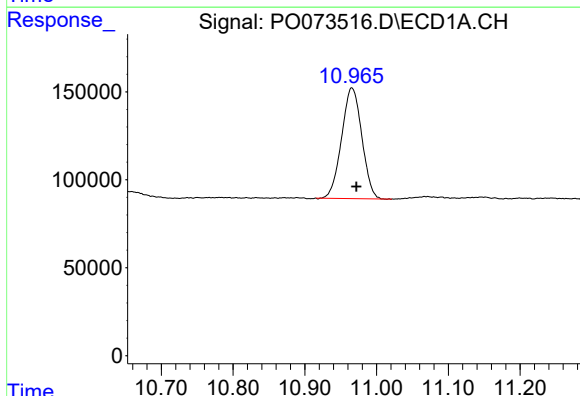


#1 Tetrachloro-m-xylene  
 R.T.: 4.942 min  
 Delta R.T.: -0.002 min  
 Response: 1322439  
 Conc: 15.81 ng/ml

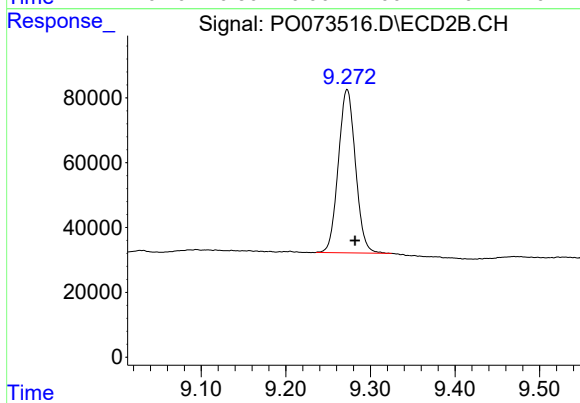
Instrument :  
 ECD\_O  
 ClientSampleId :



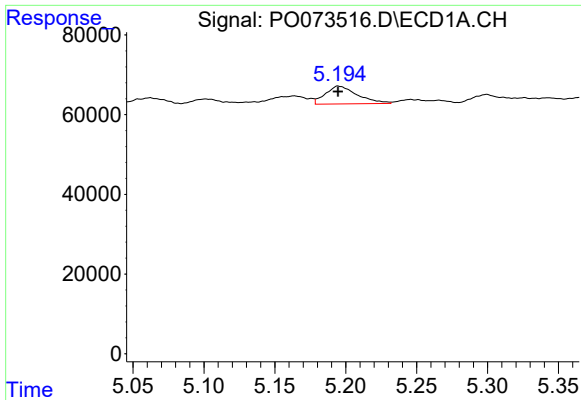
#1 Tetrachloro-m-xylene  
 R.T.: 4.007 min  
 Delta R.T.: -0.004 min  
 Response: 930945  
 Conc: 18.99 ng/ml



#2 Decachlorobiphenyl  
 R.T.: 10.966 min  
 Delta R.T.: -0.006 min  
 Response: 1234198  
 Conc: 14.97 ng/ml



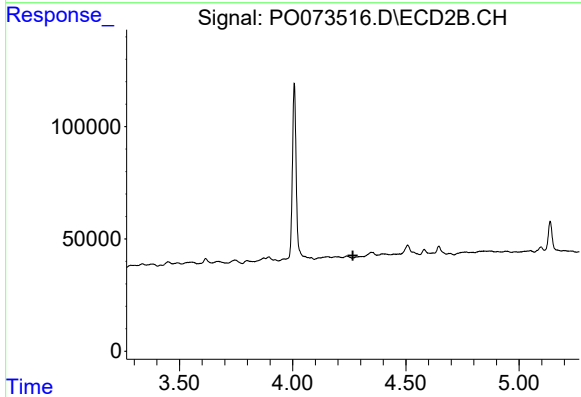
#2 Decachlorobiphenyl  
 R.T.: 9.273 min  
 Delta R.T.: -0.010 min  
 Response: 708957  
 Conc: 15.46 ng/ml



#8 AR-1221-1

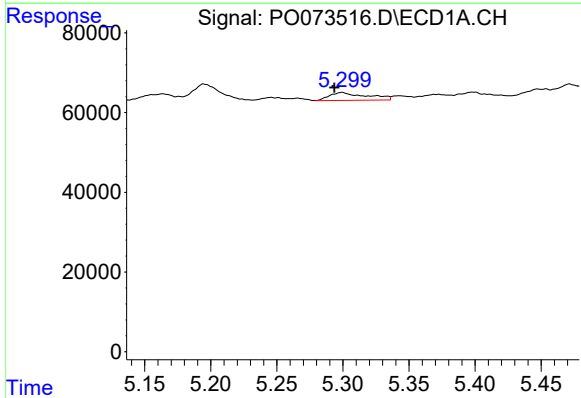
R.T.: 5.195 min  
 Delta R.T.: 0.000 min  
 Response: 70436  
 Conc: 71.01 ng/ml

Instrument :  
 ECD\_O  
 ClientSampleId :



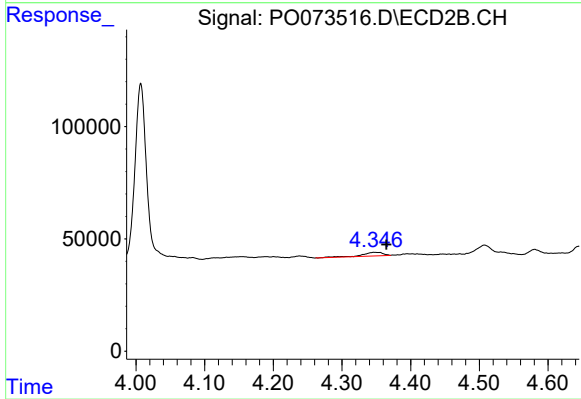
#8 AR-1221-1

R.T.: 0.000 min  
 Exp R.T. : 4.266 min  
 Response: 0  
 Conc: N.D.



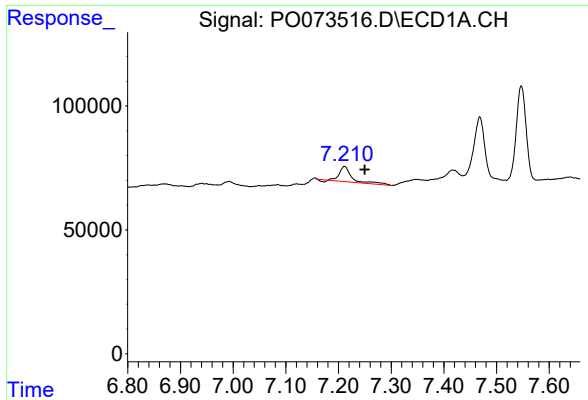
#9 AR-1221-2

R.T.: 5.299 min  
 Delta R.T.: 0.006 min  
 Response: 38956  
 Conc: 55.39 ng/ml



#9 AR-1221-2

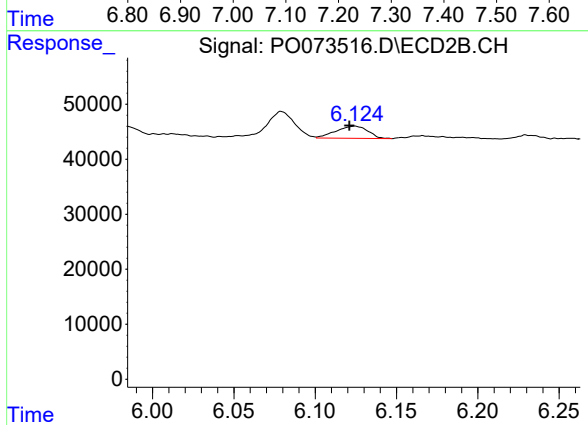
R.T.: 4.348 min  
 Delta R.T.: -0.017 min  
 Response: 34665  
 Conc: 85.75 ng/ml



#20 AR-1242-5

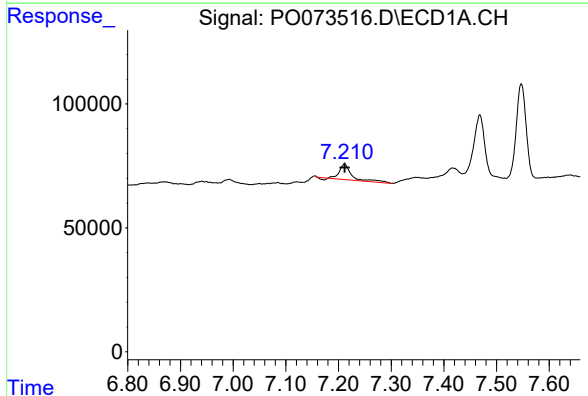
R.T.: 7.211 min  
 Delta R.T.: -0.039 min  
 Response: 101209  
 Conc: 48.12 ng/ml

Instrument :  
 ECD\_O  
 ClientSampleId :



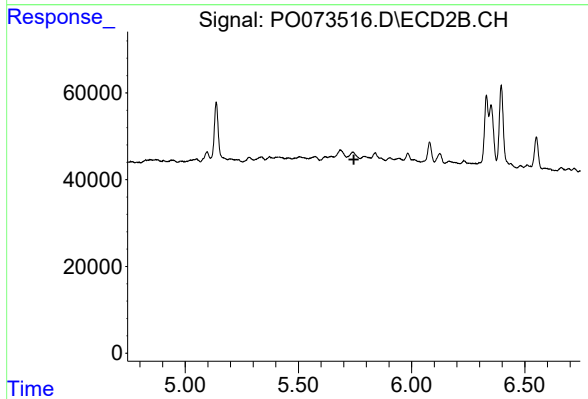
#20 AR-1242-5

R.T.: 6.124 min  
 Delta R.T.: 0.003 min  
 Response: 30385  
 Conc: 19.62 ng/ml



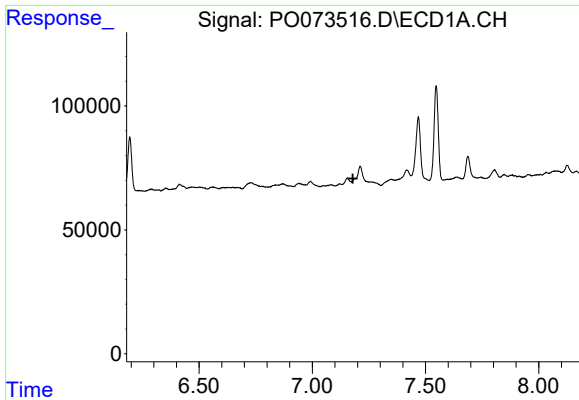
#24 AR-1248-4

R.T.: 7.211 min  
 Delta R.T.: 0.000 min  
 Response: 101209  
 Conc: 27.13 ng/ml



#24 AR-1248-4

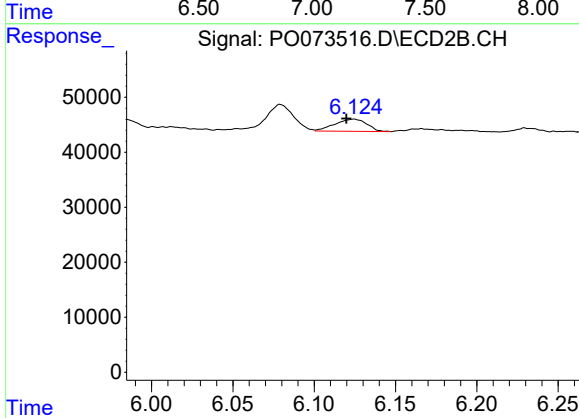
R.T.: 0.000 min  
 Exp R.T. : 5.745 min  
 Response: 0  
 Conc: N.D.



#26 AR-1254-1

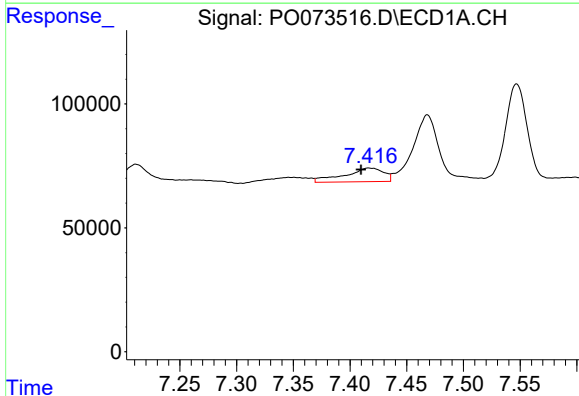
R.T.: 0.000 min  
 Exp R.T.: 7.179 min  
 Response: 0  
 Conc: N.D.

Instrument :  
 ECD\_O  
 ClientSampleId :



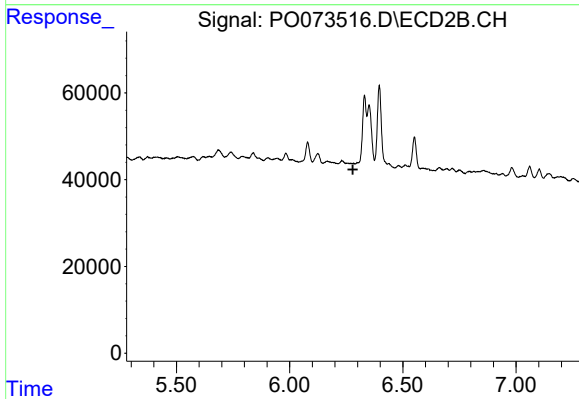
#26 AR-1254-1

R.T.: 6.124 min  
 Delta R.T.: 0.004 min  
 Response: 30385  
 Conc: 9.76 ng/ml



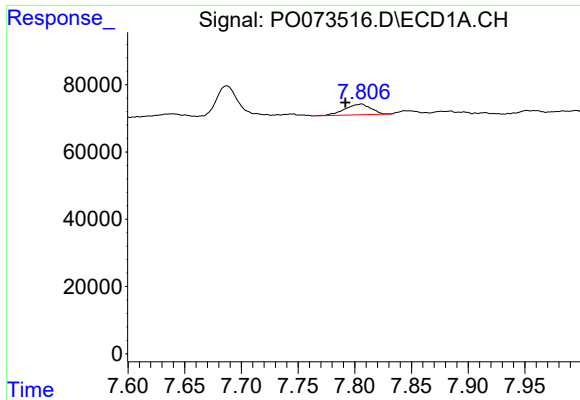
#27 AR-1254-2

R.T.: 7.417 min  
 Delta R.T.: 0.007 min  
 Response: 133512  
 Conc: 24.51 ng/ml



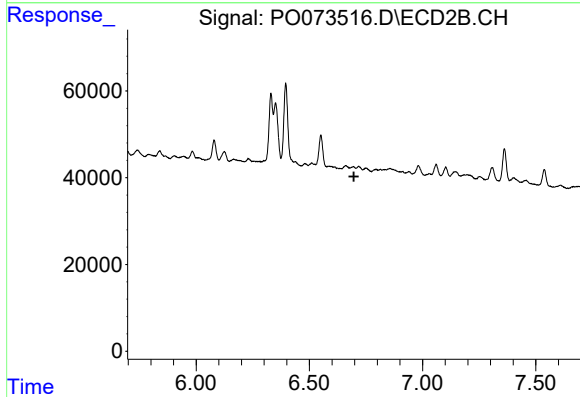
#27 AR-1254-2

R.T.: 0.000 min  
 Exp R.T.: 6.279 min  
 Response: 0  
 Conc: N.D.

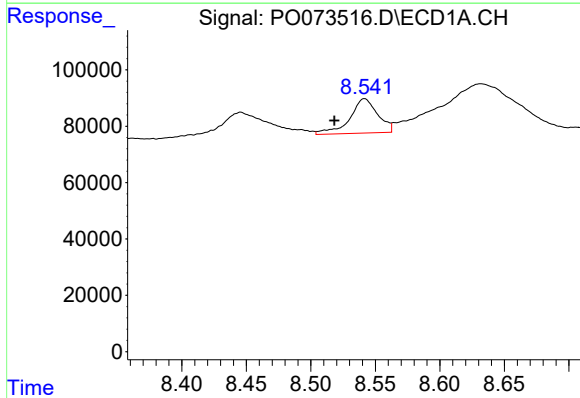


#28 AR-1254-3  
 R.T.: 7.806 min  
 Delta R.T.: 0.014 min  
 Response: 50621  
 Conc: 8.93 ng/ml

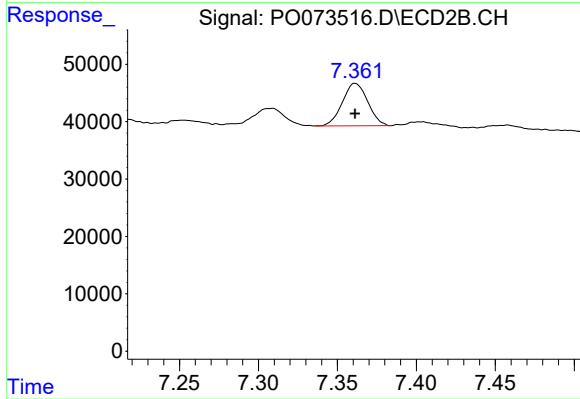
Instrument :  
 ECD\_O  
 ClientSampleId :



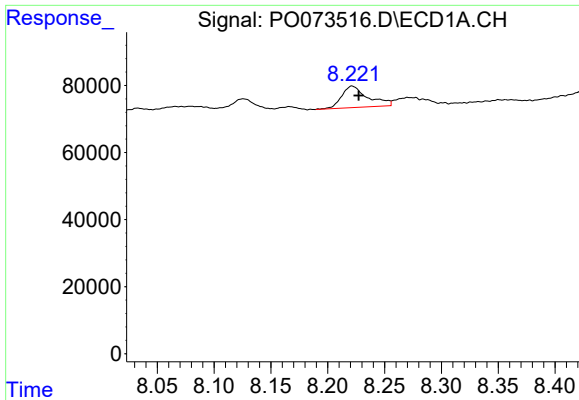
#28 AR-1254-3  
 R.T.: 0.000 min  
 Exp R.T. : 6.696 min  
 Response: 0  
 Conc: N.D.



#30 AR-1254-5  
 R.T.: 8.542 min  
 Delta R.T.: 0.023 min  
 Response: 183069  
 Conc: 38.46 ng/ml



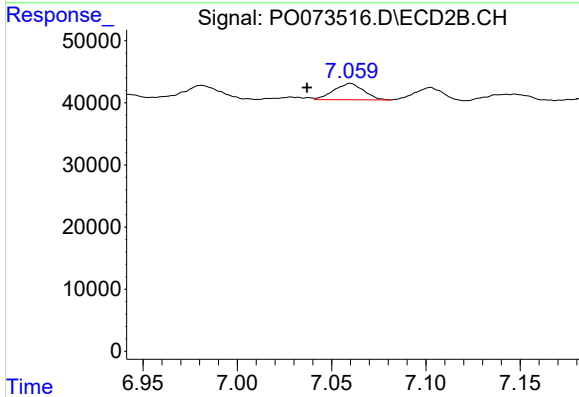
#30 AR-1254-5  
 R.T.: 7.361 min  
 Delta R.T.: 0.000 min  
 Response: 82671  
 Conc: 22.38 ng/ml



#32 AR-1260-2

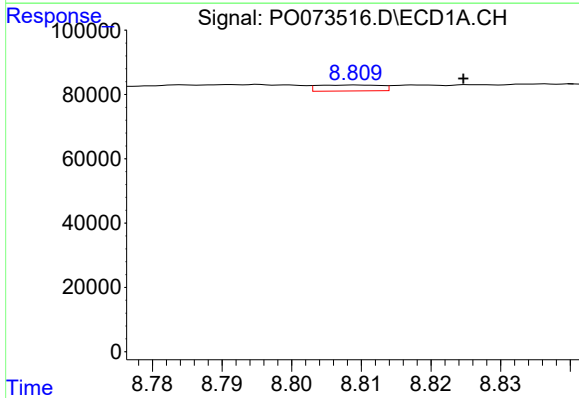
R.T.: 8.222 min  
 Delta R.T.: -0.006 min  
 Response: 103266  
 Conc: 18.79 ng/ml

Instrument :  
 ECD\_O  
 ClientSampleId :



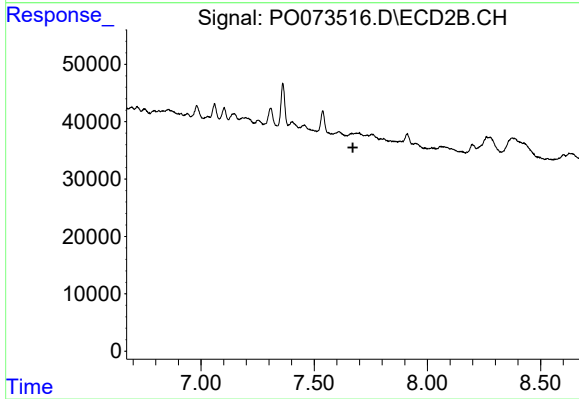
#32 AR-1260-2

R.T.: 7.060 min  
 Delta R.T.: 0.023 min  
 Response: 29044  
 Conc: 8.71 ng/ml



#34 AR-1260-4

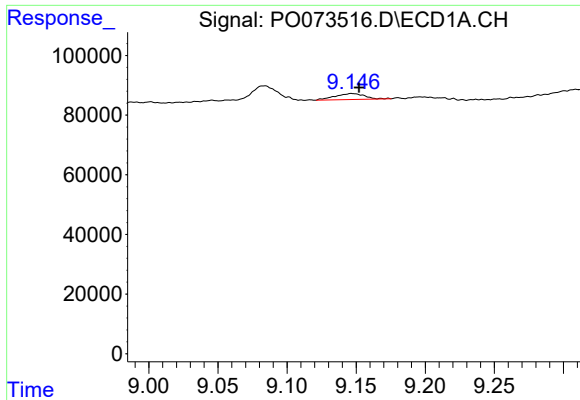
R.T.: 8.809 min  
 Delta R.T.: -0.016 min  
 Response: 11744  
 Conc: 2.72 ng/ml



#34 AR-1260-4

R.T.: 0.000 min  
 Exp R.T.: 7.671 min  
 Response: 0  
 Conc: N.D.

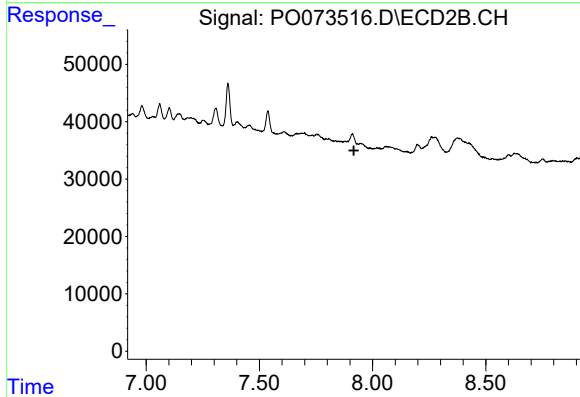




#35 AR-1260-5

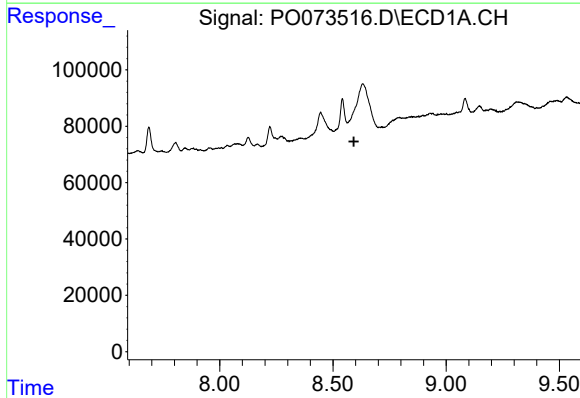
R.T.: 9.147 min  
 Delta R.T.: -0.005 min  
 Response: 30424  
 Conc: 3.08 ng/ml

Instrument :  
 ECD\_O  
 ClientSampleId :



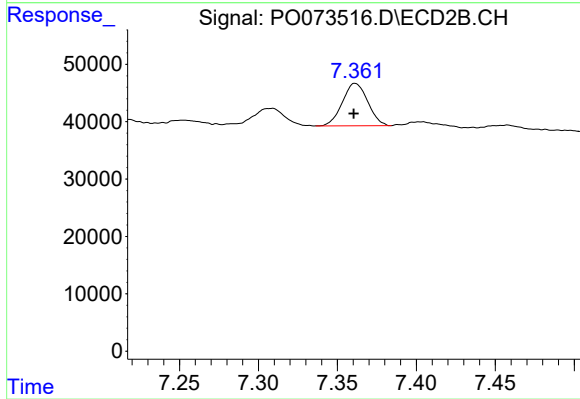
#35 AR-1260-5

R.T.: 0.000 min  
 Exp R.T. : 7.917 min  
 Response: 0  
 Conc: N.D.



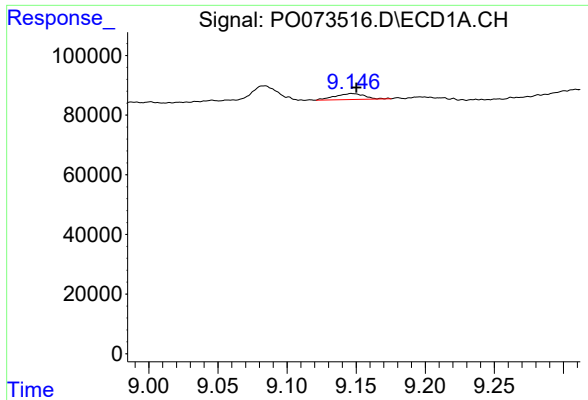
#36 AR-1262-1

R.T.: 0.000 min  
 Exp R.T. : 8.592 min  
 Response: 0  
 Conc: N.D.



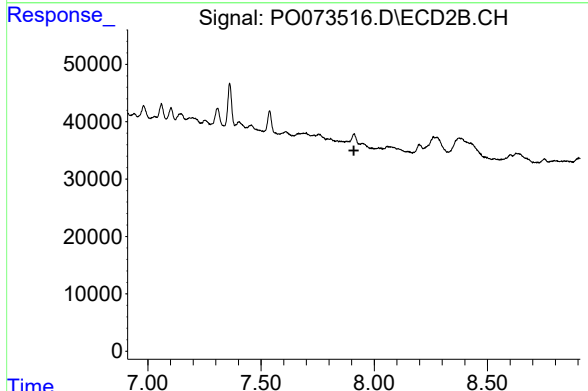
#36 AR-1262-1

R.T.: 7.361 min  
 Delta R.T.: 0.001 min  
 Response: 82671  
 Conc: 42.66 ng/ml

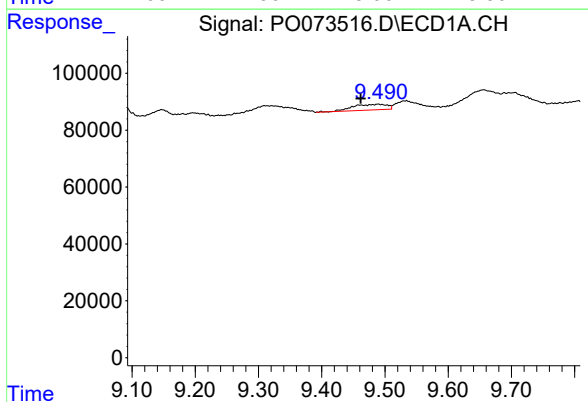


#37 AR-1262-2  
 R.T.: 9.147 min  
 Delta R.T.: -0.003 min  
 Response: 30424  
 Conc: 2.81 ng/ml

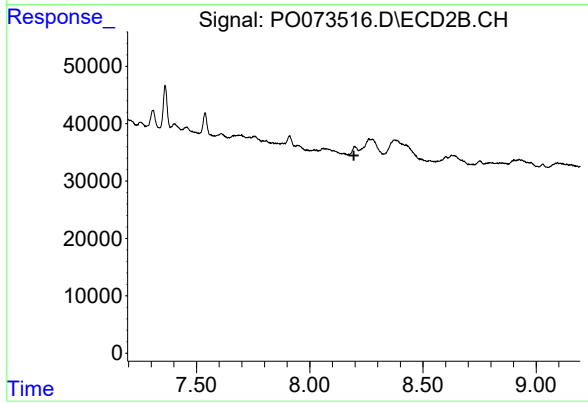
Instrument :  
 ECD\_O  
 ClientSampleId :



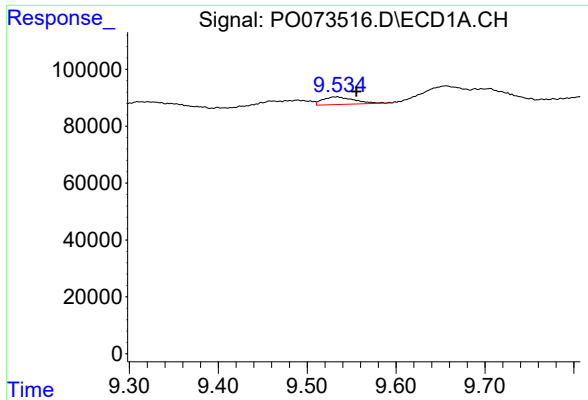
#37 AR-1262-2  
 R.T.: 0.000 min  
 Exp R.T. : 7.910 min  
 Response: 0  
 Conc: N.D.



#38 AR-1262-3  
 R.T.: 9.489 min  
 Delta R.T.: 0.028 min  
 Response: 77547  
 Conc: 10.56 ng/ml

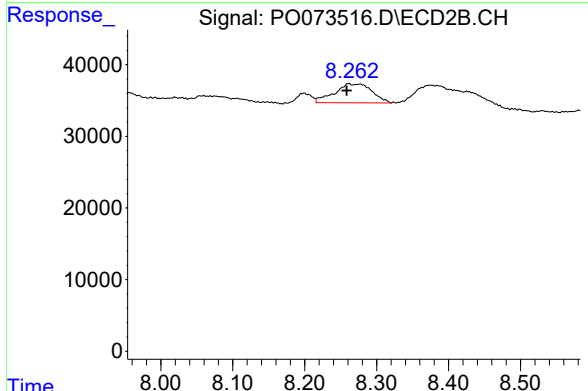


#38 AR-1262-3  
 R.T.: 0.000 min  
 Exp R.T. : 8.195 min  
 Response: 0  
 Conc: N.D.

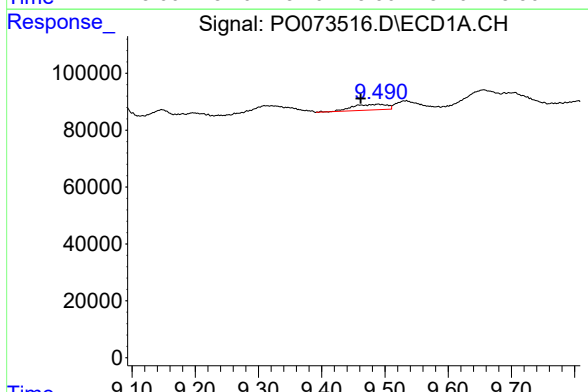


#39 AR-1262-4  
 R.T.: 9.534 min  
 Delta R.T.: -0.021 min  
 Response: 67112  
 Conc: 12.20 ng/ml

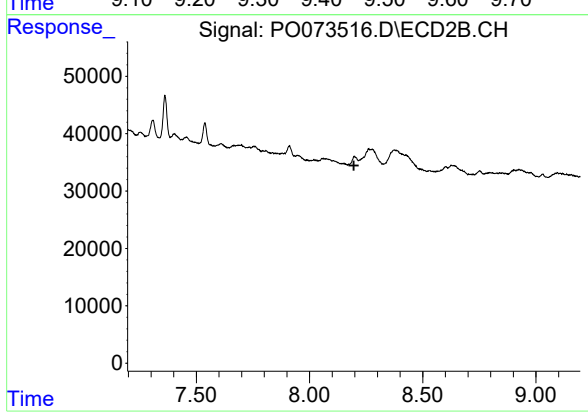
Instrument :  
 ECD\_O  
 ClientSampleId :



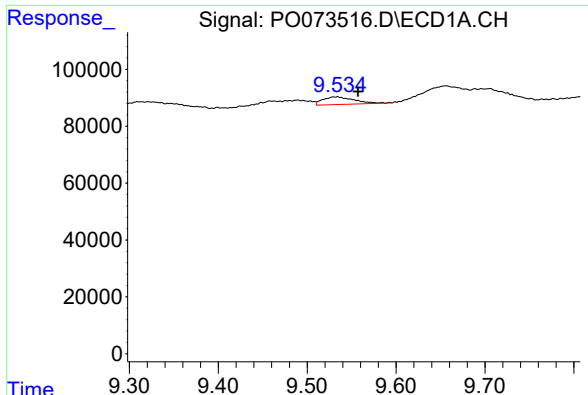
#39 AR-1262-4  
 R.T.: 8.261 min  
 Delta R.T.: 0.003 min  
 Response: 95202  
 Conc: 19.94 ng/ml



#41 AR-1268-1  
 R.T.: 9.489 min  
 Delta R.T.: 0.028 min  
 Response: 77547  
 Conc: 5.55 ng/ml



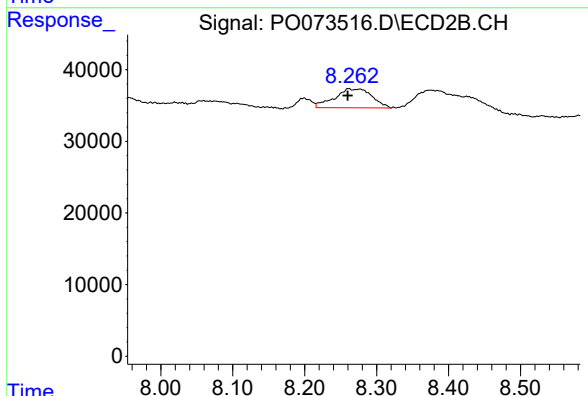
#41 AR-1268-1  
 R.T.: 0.000 min  
 Exp R.T. : 8.196 min  
 Response: 0  
 Conc: N.D.



#42 AR-1268-2

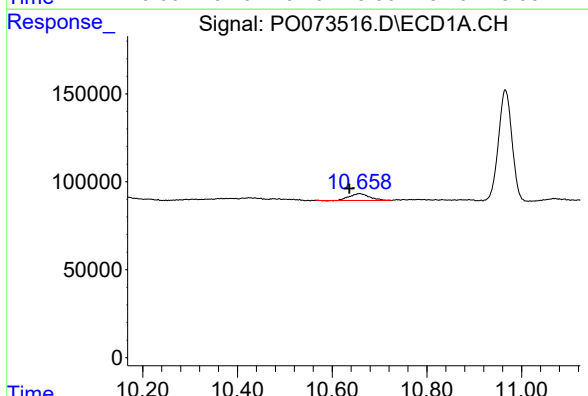
R.T.: 9.534 min  
 Delta R.T.: -0.024 min  
 Response: 67112  
 Conc: 5.52 ng/ml

Instrument :  
 ECD\_O  
 ClientSampleId :



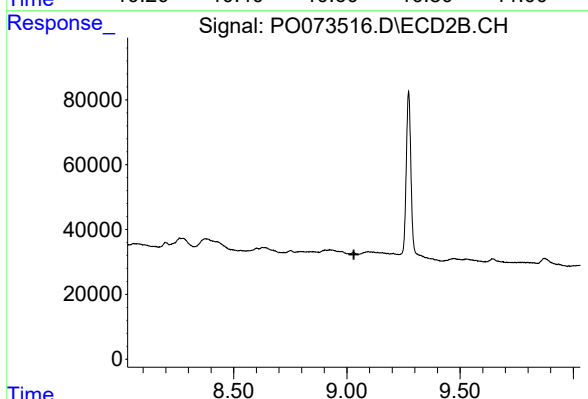
#42 AR-1268-2

R.T.: 8.261 min  
 Delta R.T.: 0.001 min  
 Response: 95202  
 Conc: 13.03 ng/ml



#45 AR-1268-5

R.T.: 10.658 min  
 Delta R.T.: 0.022 min  
 Response: 110161  
 Conc: 3.46 ng/ml



#45 AR-1268-5

R.T.: 0.000 min  
 Exp R.T. : 9.031 min  
 Response: 0  
 Conc: N.D.