

Data Path : Z:\pestpcbsrv\HPCHEM1\ECD_0\Data\PO112420\
 Data File : PO073518.D
 Signal(s) : Signal #1: ECD1A.CH Signal #2: ECD2B.CH
 Acq On : 24 Nov 2020 16:04
 Operator : DD\AJ
 Sample : L4838-04
 Misc :
 ALS Vial : 20 Sample Multiplier: 1

Instrument :
 ECD_0
 ClientSampleId :
 KENS-B2-111920-6-8

Integration File signal 1: autoint1.e
 Integration File signal 2: autoint2.e
 Quant Time: Nov 25 10:33:44 2020
 Quant Method : Z:\pestpcbsrv\HPCHEM1\ECD_0\methods\PO112320.M
 Quant Title : GC EXTRACTABLES
 QLast Update : Wed Nov 25 10:04:26 2020
 Response via : Initial Calibration
 Integrator: ChemStation 6890 Scale Mode: Small noise peaks clipped

Volume Inj. : 2 µl
 Signal #1 Phase : ZB-MR2 Signal #2 Phase: ZB-MR2
 Signal #1 Info : 30Mx0.32mmx 0.50µ Signal #2 Info : 30M x 0.32mm x 0.25µm

Compound	RT#1	RT#2	Resp#1	Resp#2	ng/ml	ng/ml

System Monitoring Compounds						
1) SA Tetrachlo...	4.943	4.008	1961809	1169563	23.452	23.855
2) SA Decachlor...	10.967	9.273	1588326	885221	19.264	19.307
Target Compounds						
8) L2 AR-1221-1	5.198	0.000	49905	0	50.310	N.D. #
9) L2 AR-1221-2	5.297	4.357	27457	25457	39.039	62.976 #
32) L7 AR-1260-2	8.245f	0.000	35771	0	6.509	N.D. #
33) L7 AR-1260-3	8.591	0.000	45754	0	10.311	N.D. #
34) L7 AR-1260-4	8.818	0.000	36183	0	8.383	N.D. #
35) L7 AR-1260-5	9.150	7.910	30213	27241	3.060	4.397 #
36) L8 AR-1262-1	8.591	0.000	45754	0	7.328	N.D. #
37) L8 AR-1262-2	9.150	7.910	30213	27241	2.793	4.155 #
38) L8 AR-1262-3	9.460	0.000	18919	0	2.578	N.D. #
39) L8 AR-1262-4	9.555	8.259	19371	54346	3.520	11.382 #
41) L9 AR-1268-1	9.460	0.000	18919	0	1.354	N.D. #
42) L9 AR-1268-2	9.555	8.259	19371	54346	1.595	7.441 #
45) L9 AR-1268-5	10.660f	0.000	95972	0	3.015	N.D. #

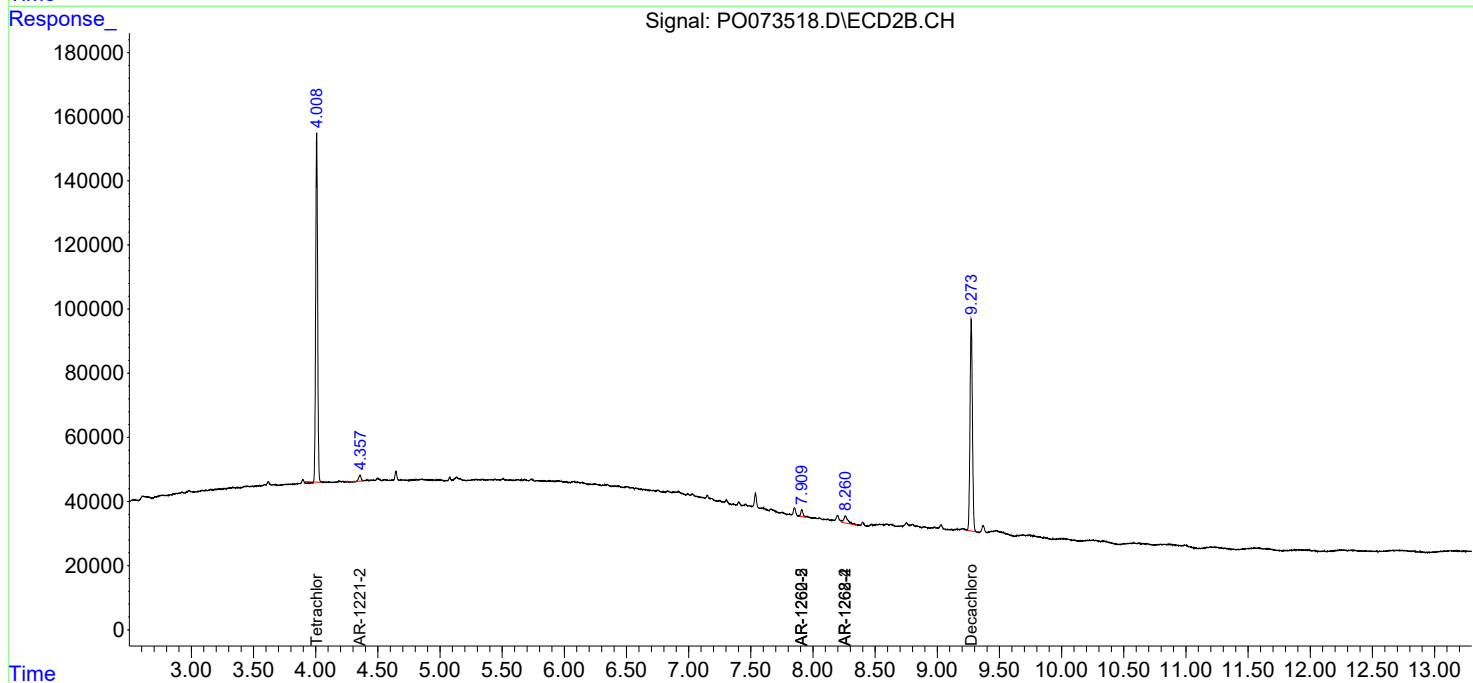
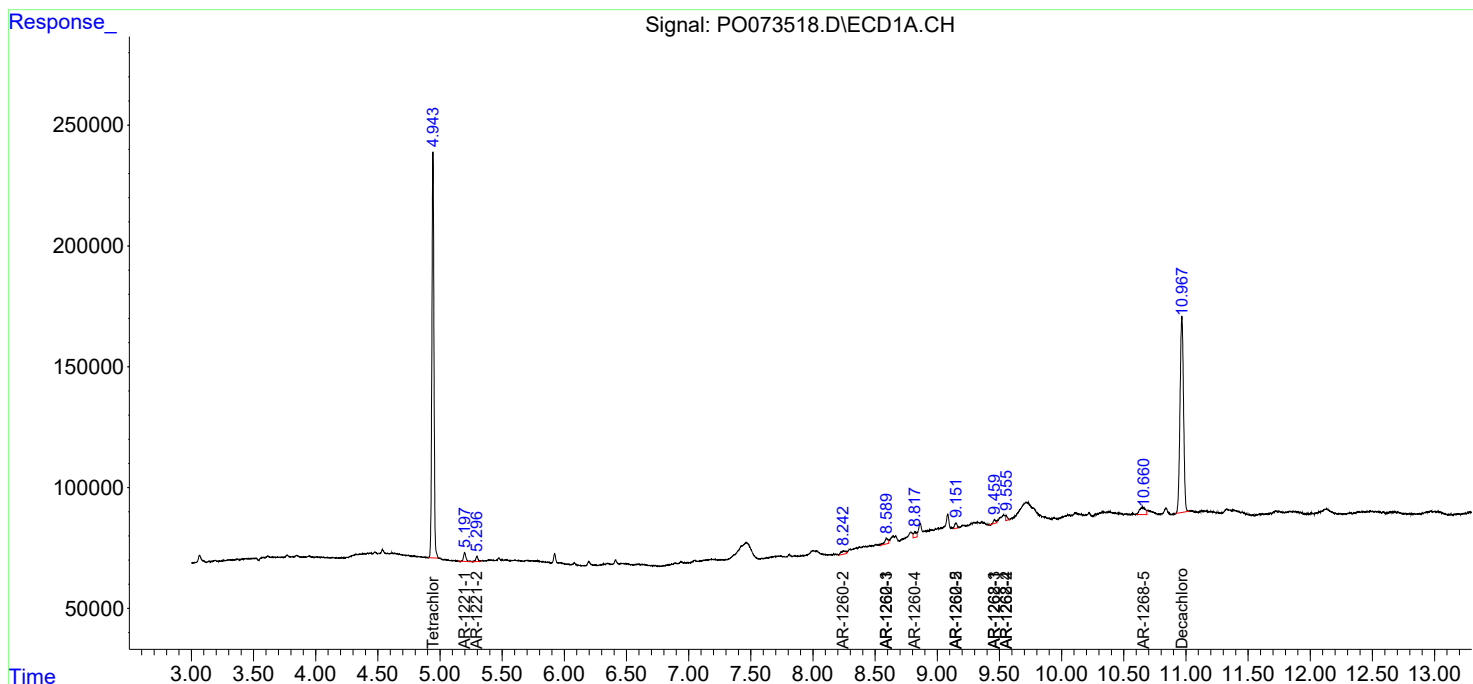
(f)=RT Delta > 1/2 Window (#)=Amounts differ by > 25% (m)=manual int.

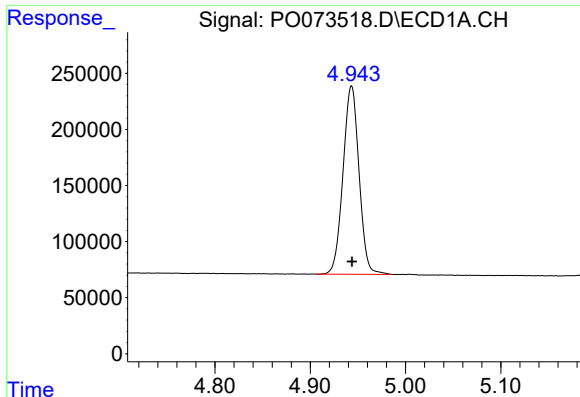
Data Path : Z:\pestpcbsrv\HPCHEM1\ECD_0\Data\PO112420\
 Data File : PO073518.D
 Signal(s) : Signal #1: ECD1A.CH Signal #2: ECD2B.CH
 Acq On : 24 Nov 2020 16:04
 Operator : DD\AJ
 Sample : L4838-04
 Misc :
 ALS Vial : 20 Sample Multiplier: 1

Instrument :
 ECD_O
 ClientSampleId :
 KENS-B2-111920-6-8

Integration File signal 1: autoint1.e
 Integration File signal 2: autoint2.e
 Quant Time: Nov 25 10:33:44 2020
 Quant Method : Z:\pestpcbsrv\HPCHEM1\ECD_0\methods\PO112320.M
 Quant Title : GC EXTRACTABLES
 QLast Update : Wed Nov 25 10:04:26 2020
 Response via : Initial Calibration
 Integrator: ChemStation 6890 Scale Mode: Small noise peaks clipped

Volume Inj. : 2 µl
 Signal #1 Phase : ZB-MR1 Signal #2 Phase: ZB-MR2
 Signal #1 Info : 30Mx0.32mmx 0.50µ Signal #2 Info : 30M x 0.32mm x 0.25µm

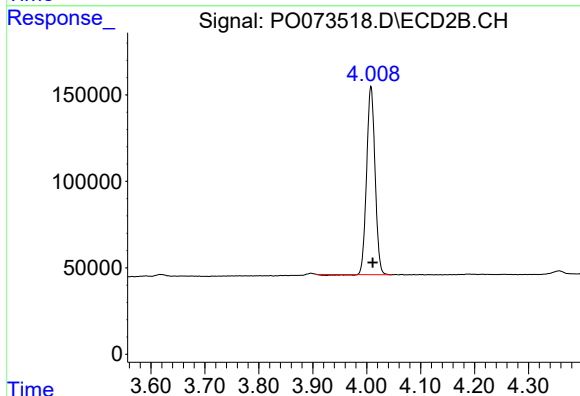




#1 Tetrachloro-m-xylene

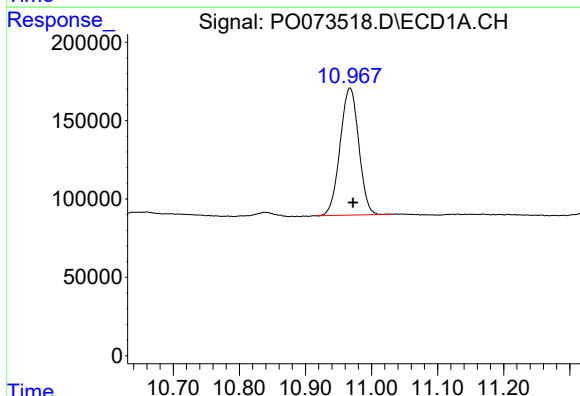
R.T.: 4.943 min
 Delta R.T.: 0.000 min
 Response: 1961809
 Conc: 23.45 ng/ml

Instrument :
 ECD_O
 ClientSampleId :
 KENS-B2-111920-6-8



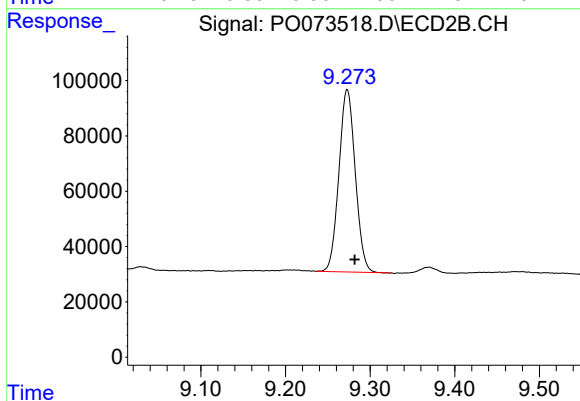
#1 Tetrachloro-m-xylene

R.T.: 4.008 min
 Delta R.T.: -0.003 min
 Response: 1169563
 Conc: 23.86 ng/ml



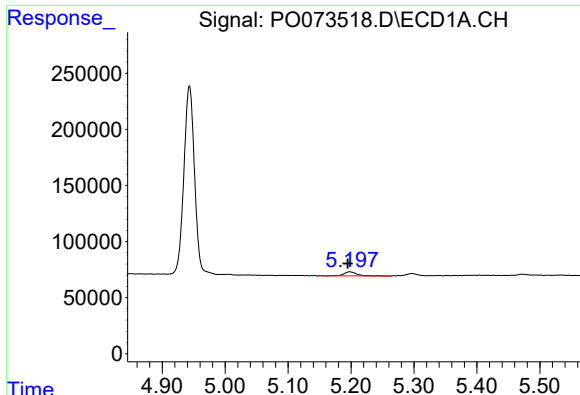
#2 Decachlorobiphenyl

R.T.: 10.967 min
 Delta R.T.: -0.005 min
 Response: 1588326
 Conc: 19.26 ng/ml



#2 Decachlorobiphenyl

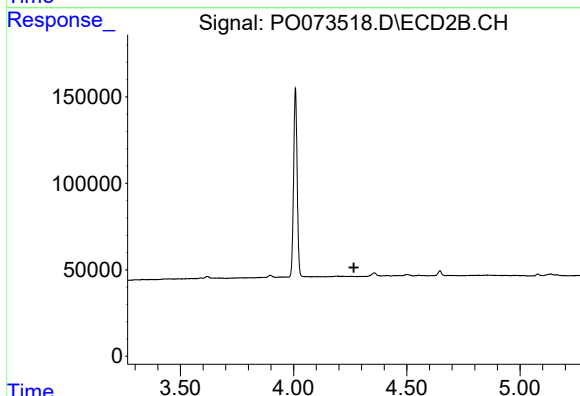
R.T.: 9.273 min
 Delta R.T.: -0.009 min
 Response: 885221
 Conc: 19.31 ng/ml



#8 AR-1221-1

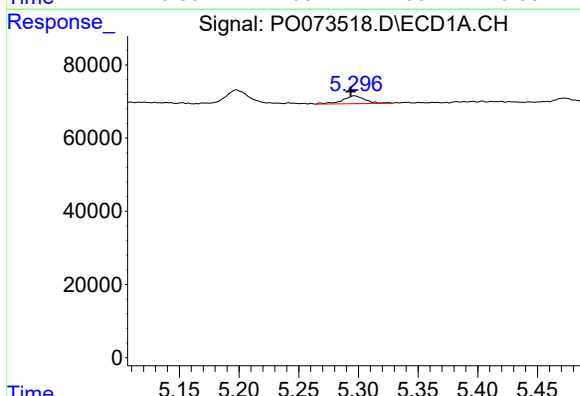
R.T.: 5.198 min
 Delta R.T.: 0.003 min
 Response: 49905
 Conc: 50.31 ng/ml

Instrument :
 ECD_O
 ClientSampleId :
 KENS-B2-111920-6-8



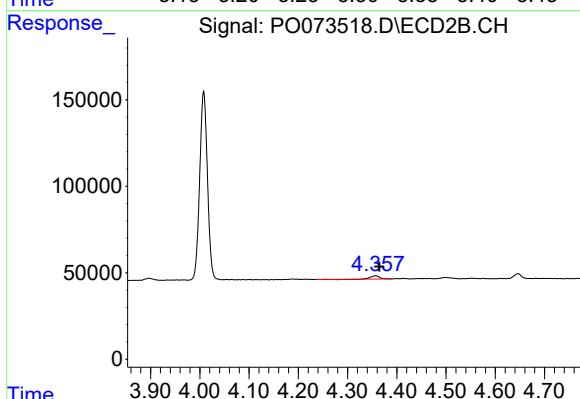
#8 AR-1221-1

R.T.: 0.000 min
 Exp R.T. : 4.266 min
 Response: 0
 Conc: N.D.



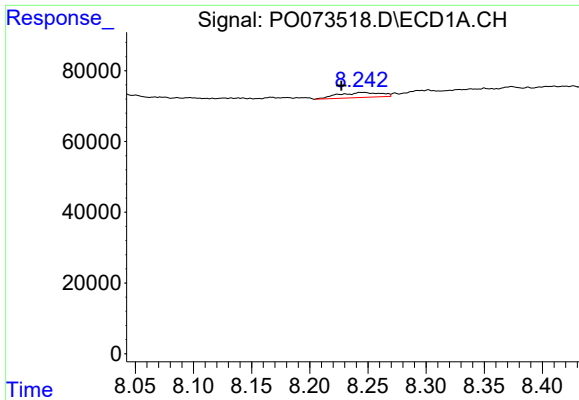
#9 AR-1221-2

R.T.: 5.297 min
 Delta R.T.: 0.003 min
 Response: 27457
 Conc: 39.04 ng/ml



#9 AR-1221-2

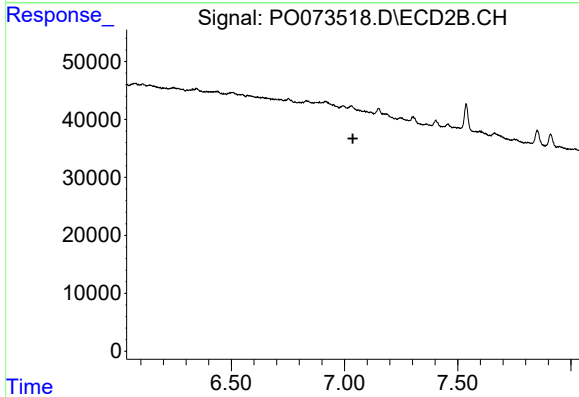
R.T.: 4.357 min
 Delta R.T.: -0.008 min
 Response: 25457
 Conc: 62.98 ng/ml



#32 AR-1260-2

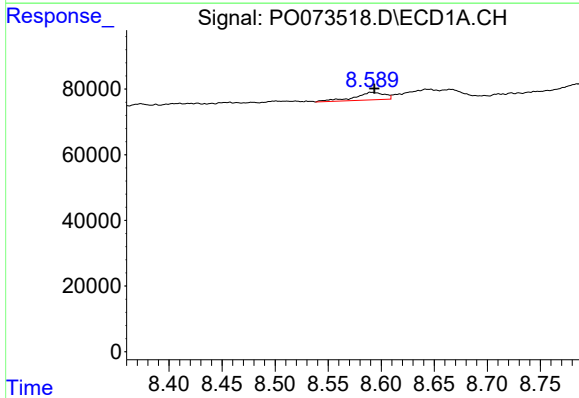
R.T.: 8.245 min
 Delta R.T.: 0.018 min
 Response: 35771
 Conc: 6.51 ng/ml

Instrument :
 ECD_O
 ClientSampleId :
 KENS-B2-111920-6-8



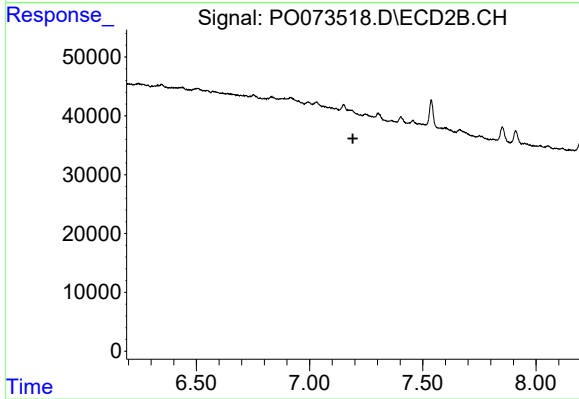
#32 AR-1260-2

R.T.: 0.000 min
 Exp R.T. : 7.037 min
 Response: 0
 Conc: N.D.



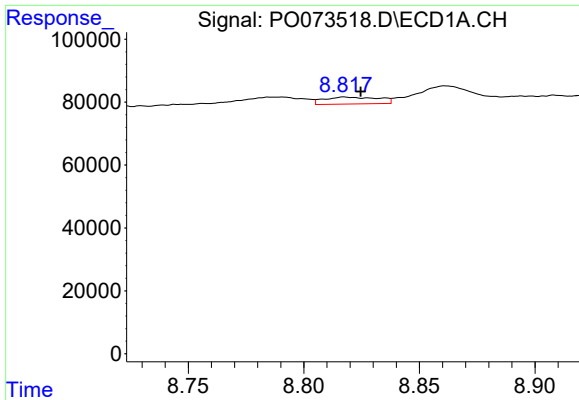
#33 AR-1260-3

R.T.: 8.591 min
 Delta R.T.: -0.003 min
 Response: 45754
 Conc: 10.31 ng/ml



#33 AR-1260-3

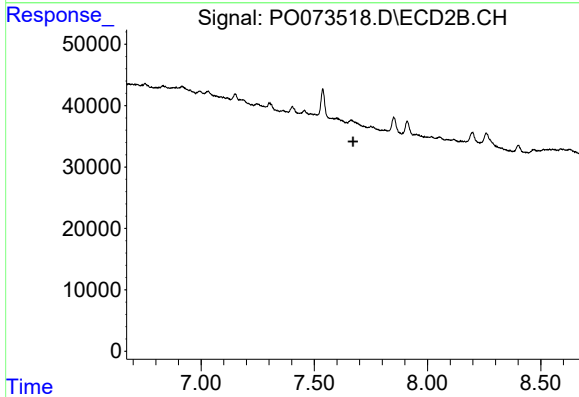
R.T.: 0.000 min
 Exp R.T. : 7.191 min
 Response: 0
 Conc: N.D.



#34 AR-1260-4

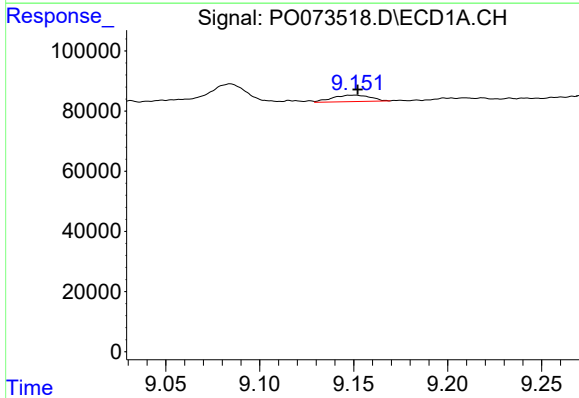
R.T.: 8.818 min
 Delta R.T.: -0.007 min
 Response: 36183
 Conc: 8.38 ng/ml

Instrument :
 ECD_O
 ClientSampleId :
 KENS-B2-111920-6-8



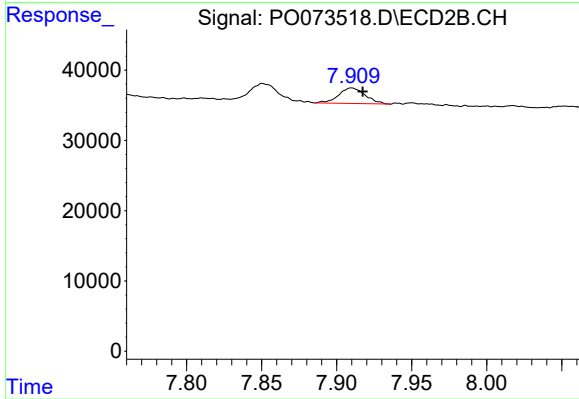
#34 AR-1260-4

R.T.: 0.000 min
 Exp R.T. : 7.671 min
 Response: 0
 Conc: N.D.



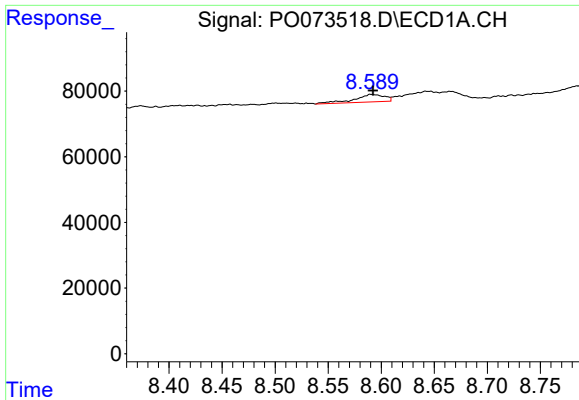
#35 AR-1260-5

R.T.: 9.150 min
 Delta R.T.: -0.002 min
 Response: 30213
 Conc: 3.06 ng/ml



#35 AR-1260-5

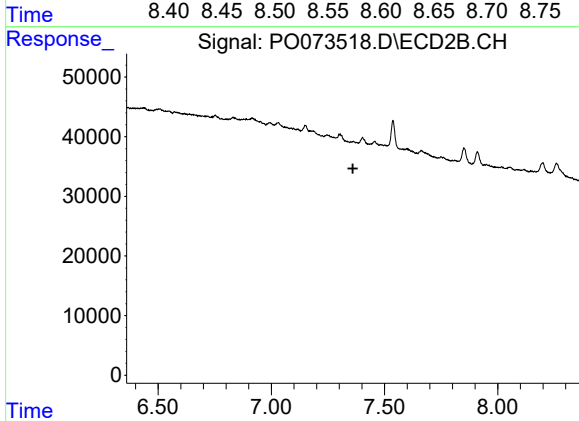
R.T.: 7.910 min
 Delta R.T.: -0.007 min
 Response: 27241
 Conc: 4.40 ng/ml



#36 AR-1262-1

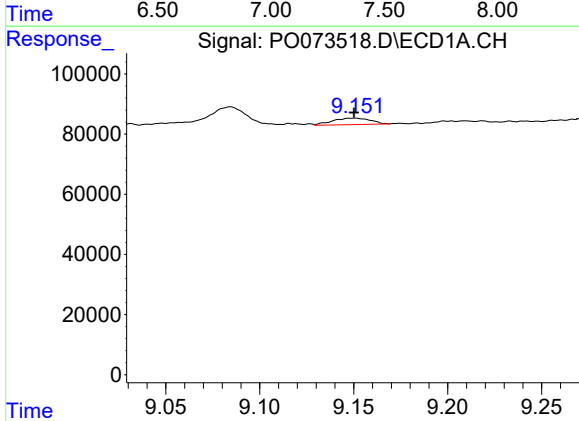
R.T.: 8.591 min
 Delta R.T.: -0.002 min
 Response: 45754
 Conc: 7.33 ng/ml

Instrument :
 ECD_O
ClientSampleId :
 KENS-B2-111920-6-8



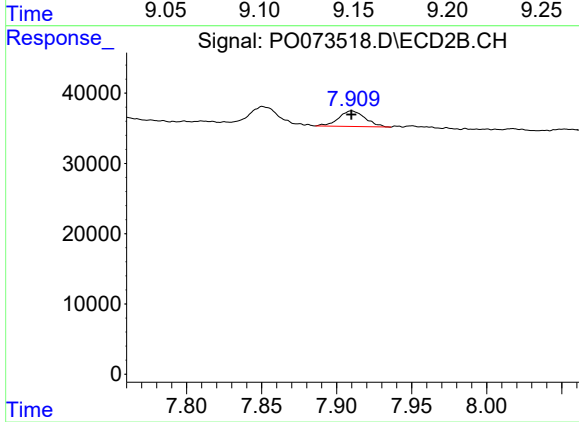
#36 AR-1262-1

R.T.: 0.000 min
 Exp R.T. : 7.360 min
 Response: 0
 Conc: N.D.



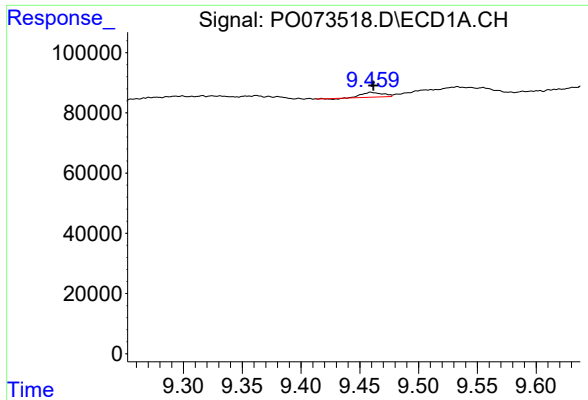
#37 AR-1262-2

R.T.: 9.150 min
 Delta R.T.: 0.000 min
 Response: 30213
 Conc: 2.79 ng/ml



#37 AR-1262-2

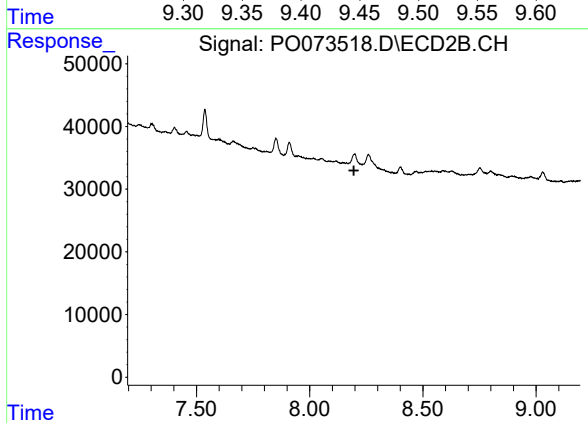
R.T.: 7.910 min
 Delta R.T.: 0.000 min
 Response: 27241
 Conc: 4.15 ng/ml



#38 AR-1262-3

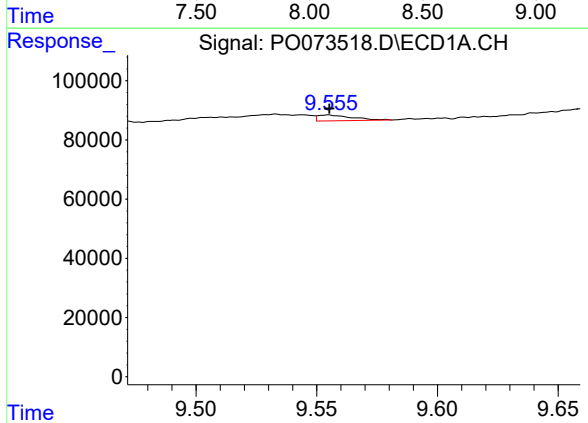
R.T.: 9.460 min
 Delta R.T.: -0.002 min
 Response: 18919
 Conc: 2.58 ng/ml

Instrument :
 ECD_O
 ClientSampleId :
 KENS-B2-111920-6-8



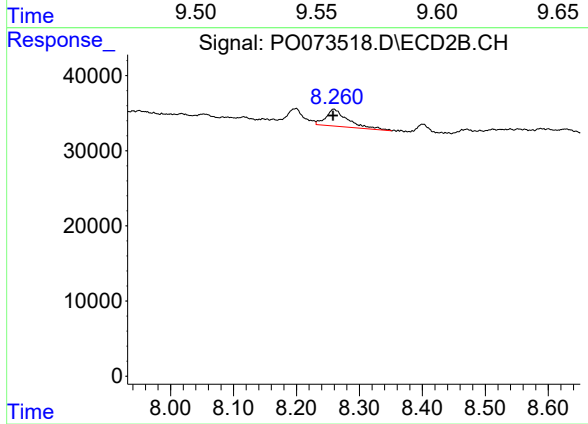
#38 AR-1262-3

R.T.: 0.000 min
 Exp R.T. : 8.195 min
 Response: 0
 Conc: N.D.



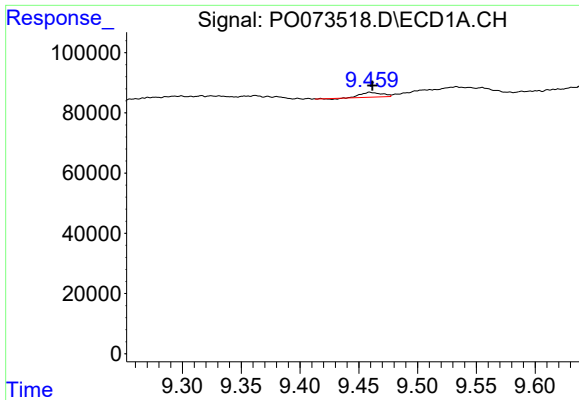
#39 AR-1262-4

R.T.: 9.555 min
 Delta R.T.: 0.000 min
 Response: 19371
 Conc: 3.52 ng/ml



#39 AR-1262-4

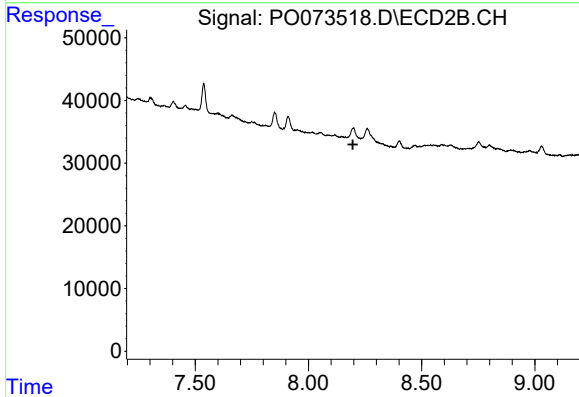
R.T.: 8.259 min
 Delta R.T.: 0.000 min
 Response: 54346
 Conc: 11.38 ng/ml



#41 AR-1268-1

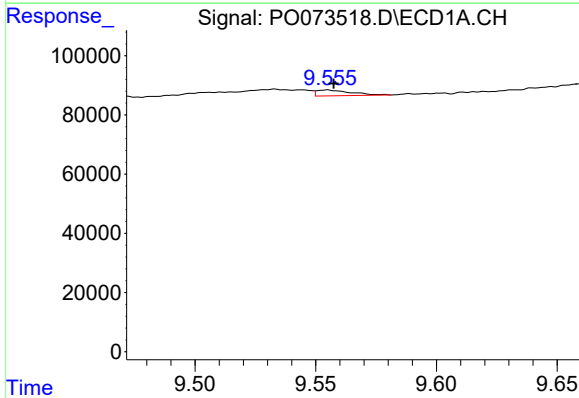
R.T.: 9.460 min
 Delta R.T.: -0.002 min
 Response: 18919
 Conc: 1.35 ng/ml

Instrument :
 ECD_O
 ClientSampleId :
 KENS-B2-111920-6-8



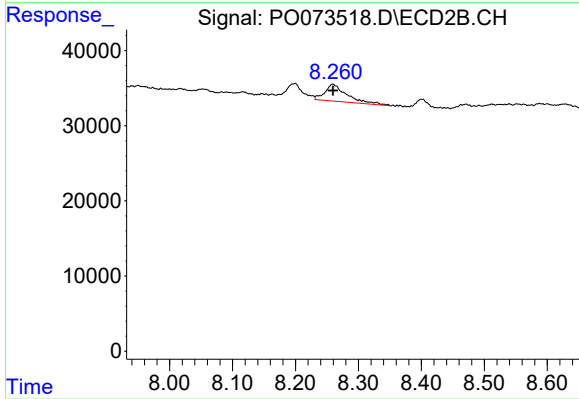
#41 AR-1268-1

R.T.: 0.000 min
 Exp R.T. : 8.196 min
 Response: 0
 Conc: N.D.



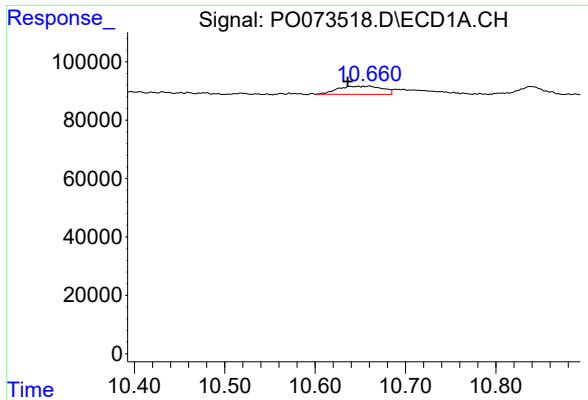
#42 AR-1268-2

R.T.: 9.555 min
 Delta R.T.: -0.003 min
 Response: 19371
 Conc: 1.59 ng/ml



#42 AR-1268-2

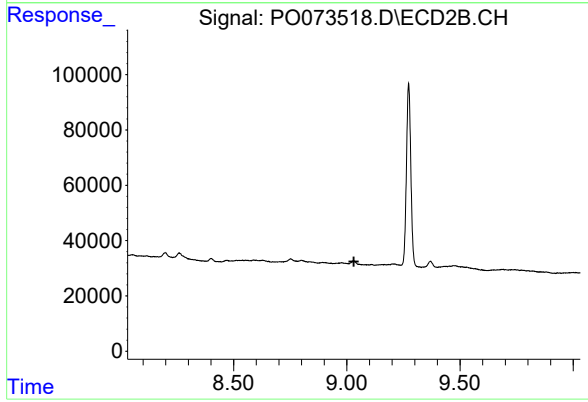
R.T.: 8.259 min
 Delta R.T.: 0.000 min
 Response: 54346
 Conc: 7.44 ng/ml



#45 AR-1268-5

R.T.: 10.660 min
Delta R.T.: 0.024 min
Response: 95972
Conc: 3.02 ng/ml

Instrument :
ECD_O
ClientSampleId :
KENS-B2-111920-6-8



#45 AR-1268-5

R.T.: 0.000 min
Exp R.T. : 9.031 min
Response: 0
Conc: N.D.