

Data Path : Z:\pestpcbsrv\HPCHEM1\ECD\_0\Data\PO112420\  
 Data File : PO073522.D  
 Signal(s) : Signal #1: ECD1A.CH Signal #2: ECD2B.CH  
 Acq On : 24 Nov 2020 17:12  
 Operator : DD\AJ  
 Sample : AR1660CCC500  
 Misc :  
 ALS Vial : 3 Sample Multiplier: 1

Instrument :  
 ECD\_0  
 ClientSampled :

Integration File signal 1: autoint1.e  
 Integration File signal 2: autoint2.e  
 Quant Time: Nov 25 10:34:59 2020  
 Quant Method : Z:\pestpcbsrv\HPCHEM1\ECD\_0\methods\PO112320.M  
 Quant Title : GC EXTRACTABLES  
 QLast Update : Wed Nov 25 10:04:26 2020  
 Response via : Initial Calibration  
 Integrator: ChemStation 6890 Scale Mode: Small noise peaks clipped

Volume Inj. : 2 µl  
 Signal #1 Phase : ZB-MR1 Signal #2 Phase: ZB-MR2  
 Signal #1 Info : 30Mx0.32mmx 0.50µ Signal #2 Info : 30M x 0.32mm x 0.25µm

Compound	RT#1	RT#2	Resp#1	Resp#2	ng/ml	ng/ml
System Monitoring Compounds						
1) SA Tetrachlo...	4.942	4.007	4526622	2498770	54.113	50.966
2) SA Decachlor...	10.964	9.272	3431441	1908917	41.618	41.633
Target Compounds						
3) L1 AR-1016-1	6.264	5.254	1583695	1003647	480.927	492.656
4) L1 AR-1016-2	6.288	5.275	2243263	1397732	487.299	499.770
5) L1 AR-1016-3	6.355	5.464	1342809	744414	490.395	500.604
6) L1 AR-1016-4	6.462	5.517	1148705	605484	503.281	509.469
7) L1 AR-1016-5	6.778	5.743	1134123	664353	504.424	441.342
8) L2 AR-1221-1	5.188	4.260	158596	96229	159.884	170.734
9) L2 AR-1221-2	5.292	4.359	216571	137530	307.925	340.222
10) L2 AR-1221-3	5.379	4.448	829471	490301	369.952	369.172
11) L3 AR-1232-1	5.379	4.448	829471	490301	449.461	431.083
12) L3 AR-1232-2	5.969	5.275	1080000	1397732	1134.899	1169.463
13) L3 AR-1232-3	6.288	5.464	2243263	744414	1146.787	1186.663
14) L3 AR-1232-4	6.462	5.561	1148705	707772	1161.822	1312.799
15) L3 AR-1232-5	6.560	5.743	1019971	664353	1514.994	1124.542 #
16) L4 AR-1242-1	6.264	5.254	1583695	1003647	600.463	613.654
17) L4 AR-1242-2	6.288	5.275	2243263	1397732	613.678	617.967
18) L4 AR-1242-3	6.355	5.464	1342809	744414	608.902	620.030
19) L4 AR-1242-4	6.462	5.561	1148705	707772	618.864	643.956
20) L4 AR-1242-5	7.247	6.120	296511	642778	140.970	415.130 #
21) L5 AR-1248-1	6.264	5.254	1583695	1003647	792.202	800.306
22) L5 AR-1248-2	6.560	5.517	1019971	605484	394.541	358.034
23) L5 AR-1248-3	6.778	5.561	1134123	707772	370.076	414.755
24) L5 AR-1248-4	7.207	5.743	289811	664353	77.691	323.177 #
25) L5 AR-1248-5	7.247	6.163	296511	171209	82.872	77.103
26) L6 AR-1254-1	7.177	6.120	854500	642778	247.084	206.428
27) L6 AR-1254-2	7.406	6.279	853164	621258	156.602	227.566 #
28) L6 AR-1254-3	7.789	6.715f	461294	1089345	81.396	257.575 #
29) L6 AR-1254-4	8.085	6.935	363532	196765	75.139	68.155
30) L6 AR-1254-5	8.515	7.361	2582467	1658216	542.494	448.996
31) L7 AR-1260-1	7.957	6.834	1838763	1365027	455.676	508.054
32) L7 AR-1260-2	8.223	7.029	2410235	1662646	438.555	498.473
33) L7 AR-1260-3	8.589	7.183	1936331	1423158	436.353	460.693
34) L7 AR-1260-4	8.821	7.663	1885595	1154291	436.869	469.072
35) L7 AR-1260-5	9.148	7.910	4261562	2804605	431.556	452.717
36) L8 AR-1262-1	8.589	7.361	1936331	1658216	310.141	855.659 #
37) L8 AR-1262-2	9.148	7.910	4261562	2804605	393.959	427.764
38) L8 AR-1262-3	9.480f	8.195	2626585	659778	357.846	244.529 #
39) L8 AR-1262-4	9.534f	8.257	1725575	1911117	313.568	400.258 #
40) L8 AR-1262-5	10.219	8.752	1233318	705577	316.854	308.505
41) L9 AR-1268-1	9.480f	8.195	2626585	659778	188.038	80.992 #

Data Path : Z:\pestpcbsrv\HPCHEM1\ECD\_0\Data\PO112420\  
 Data File : PO073522.D  
 Signal(s) : Signal #1: ECD1A.CH Signal #2: ECD2B.CH  
 Acq On : 24 Nov 2020 17:12  
 Operator : DD\AJ  
 Sample : AR1660CCC500  
 Misc :  
 ALS Vial : 3 Sample Multiplier: 1

Instrument :  
 ECD\_0  
 ClientSampleId :

Integration File signal 1: autoint1.e  
 Integration File signal 2: autoint2.e  
 Quant Time: Nov 25 10:34:59 2020  
 Quant Method : Z:\pestpcbsrv\HPCHEM1\ECD\_0\methods\PO112320.M  
 Quant Title : GC EXTRACTABLES  
 QLast Update : Wed Nov 25 10:04:26 2020  
 Response via : Initial Calibration  
 Integrator: ChemStation 6890 Scale Mode: Small noise peaks clipped

Volume Inj. : 2 µl  
 Signal #1 Phase : ZB-MR1 Signal #2 Phase: ZB-MR2  
 Signal #1 Info : 30Mx0.32mmx 0.50µ Signal #2 Info : 30M x 0.32mm x 0.25µm

	Compound	RT#1	RT#2	Resp#1	Resp#2	ng/ml	ng/ml
42)	L9 AR-1268-2	9.534f	8.257	1725575	1911117	142.043	261.663 #
43)	L9 AR-1268-3	9.779	8.466	69575	34190	6.605	5.466
44)	L9 AR-1268-4	10.219	8.752	1233318	705577	273.386	263.413
45)	L9 AR-1268-5	10.631	9.030	354032	203703	11.123	11.167

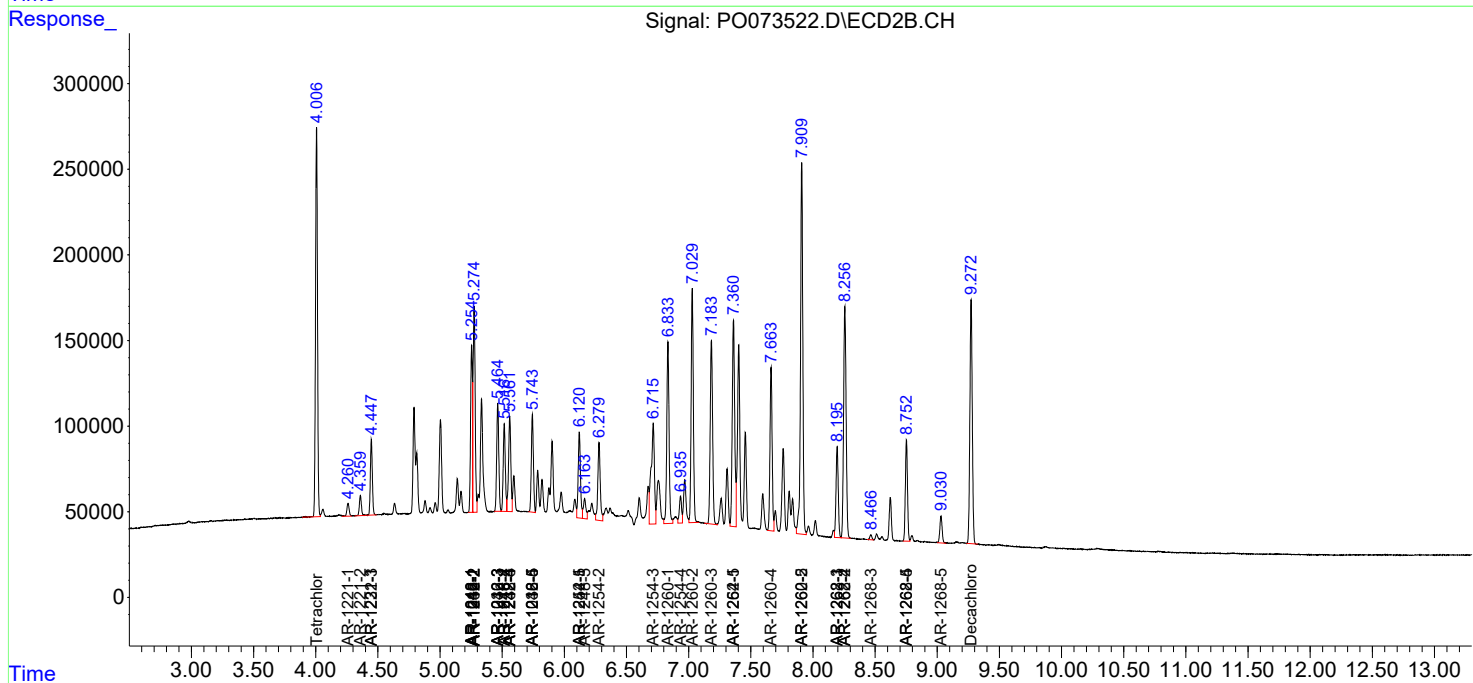
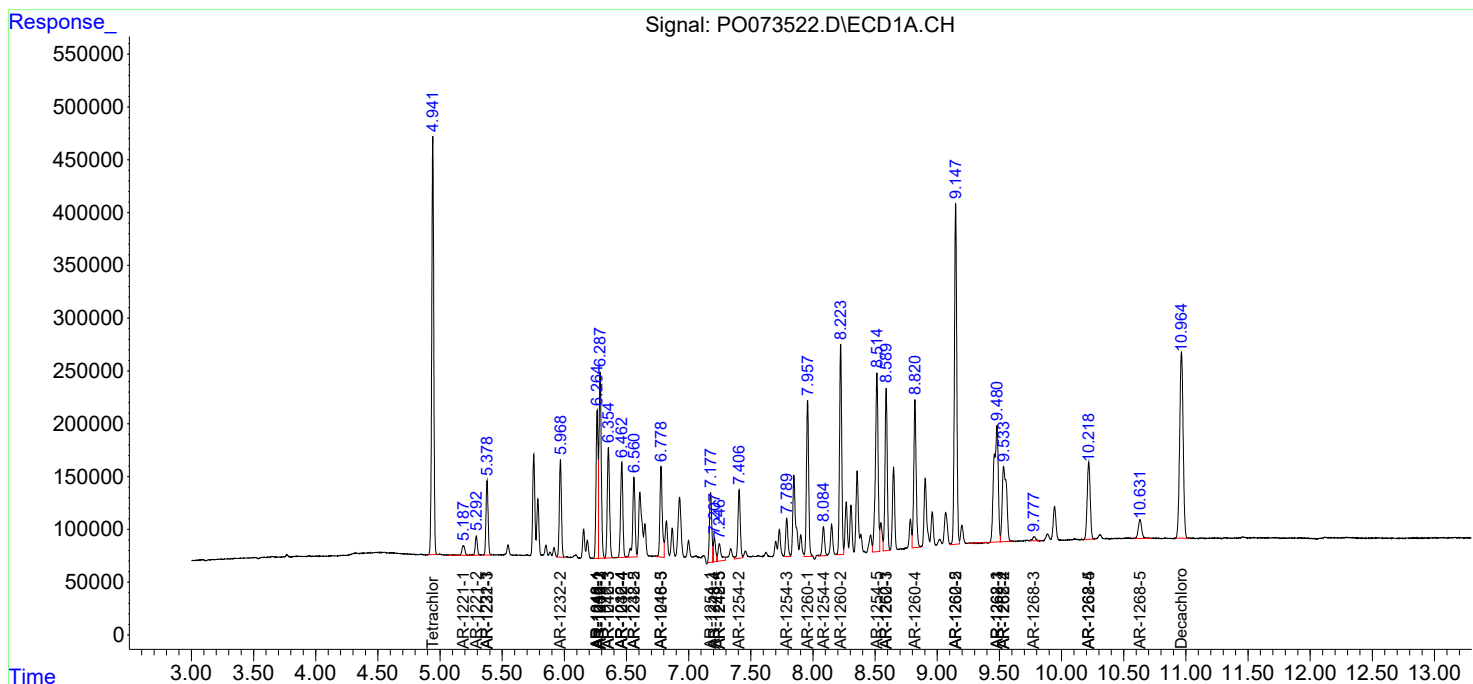
(f)=RT Delta > 1/2 Window (#)=Amounts differ by > 25% (m)=manual int.

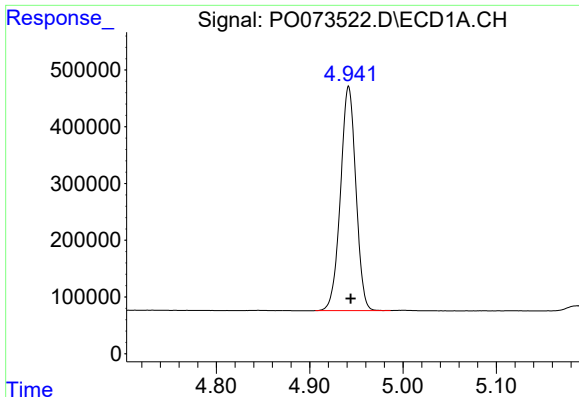
Data Path : Z:\pestpcbsrv\HPCHEM1\ECD\_O\Data\PO112420\  
 Data File : PO073522.D  
 Signal(s) : Signal #1: ECD1A.CH Signal #2: ECD2B.CH  
 Acq On : 24 Nov 2020 17:12  
 Operator : DD\AJ  
 Sample : AR1660CCC500  
 Misc :  
 ALS Vial : 3 Sample Multiplier: 1

Instrument :  
 ECD\_O  
 ClientSampled :

Integration File signal 1: autoint1.e  
 Integration File signal 2: autoint2.e  
 Quant Time: Nov 25 10:34:59 2020  
 Quant Method : Z:\pestpcbsrv\HPCHEM1\ECD\_O\methods\PO112320.M  
 Quant Title : GC EXTRACTABLES  
 QLast Update : Wed Nov 25 10:04:26 2020  
 Response via : Initial Calibration  
 Integrator: ChemStation 6890 Scale Mode: Small noise peaks clipped

Volume Inj. : 2 µl  
 Signal #1 Phase : ZB-MR1 Signal #2 Phase: ZB-MR2  
 Signal #1 Info : 30Mx0.32mmx 0.50µ Signal #2 Info : 30M x 0.32mm x 0.25µm

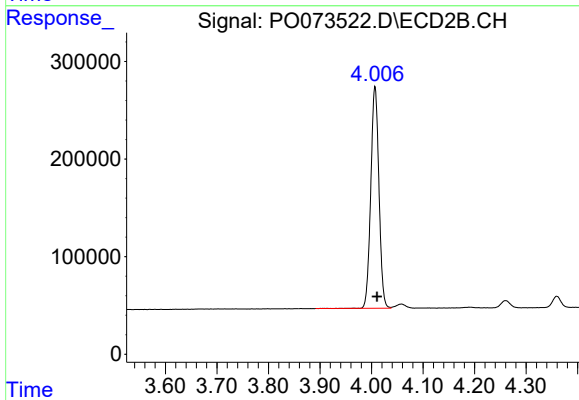




#1 Tetrachloro-m-xylene

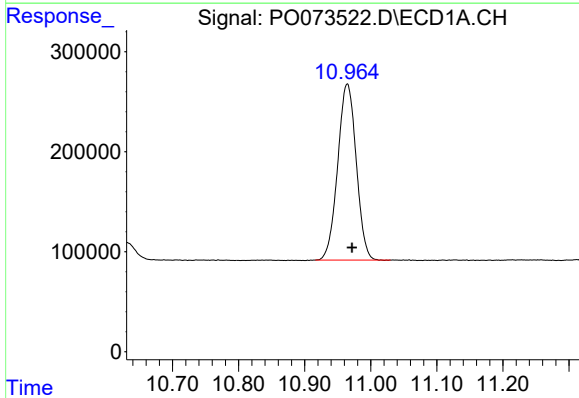
R.T.: 4.942 min  
 Delta R.T.: -0.002 min  
 Response: 4526622  
 Conc: 54.11 ng/ml

Instrument :  
 ECD\_O  
 ClientSampleId :



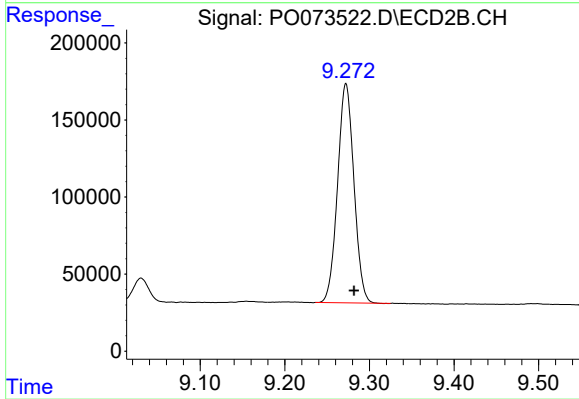
#1 Tetrachloro-m-xylene

R.T.: 4.007 min  
 Delta R.T.: -0.004 min  
 Response: 2498770  
 Conc: 50.97 ng/ml



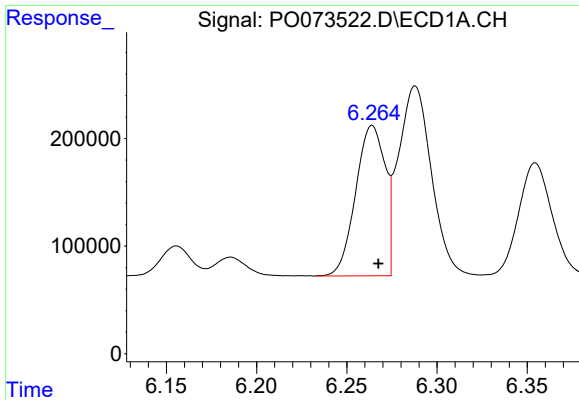
#2 Decachlorobiphenyl

R.T.: 10.964 min  
 Delta R.T.: -0.007 min  
 Response: 3431441  
 Conc: 41.62 ng/ml



#2 Decachlorobiphenyl

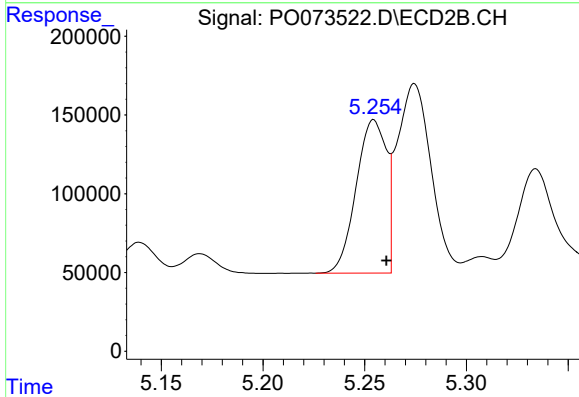
R.T.: 9.272 min  
 Delta R.T.: -0.010 min  
 Response: 1908917  
 Conc: 41.63 ng/ml



#3 AR-1016-1

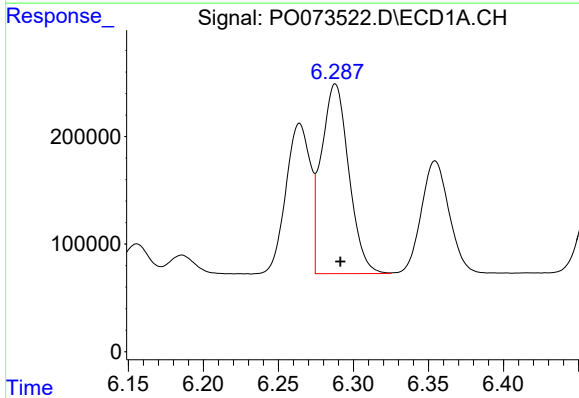
R.T.: 6.264 min  
 Delta R.T.: -0.003 min  
 Response: 1583695  
 Conc: 480.93 ng/ml

Instrument :  
 ECD\_O  
 ClientSampled :



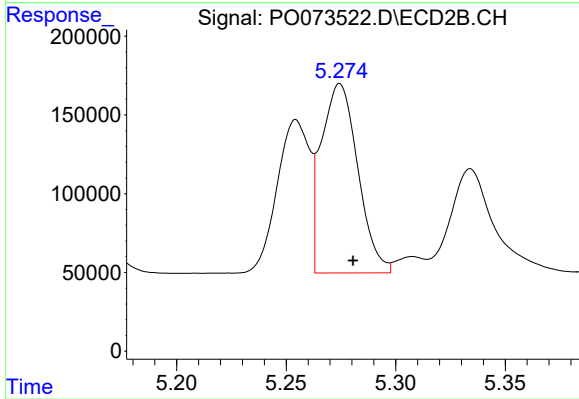
#3 AR-1016-1

R.T.: 5.254 min  
 Delta R.T.: -0.006 min  
 Response: 1003647  
 Conc: 492.66 ng/ml



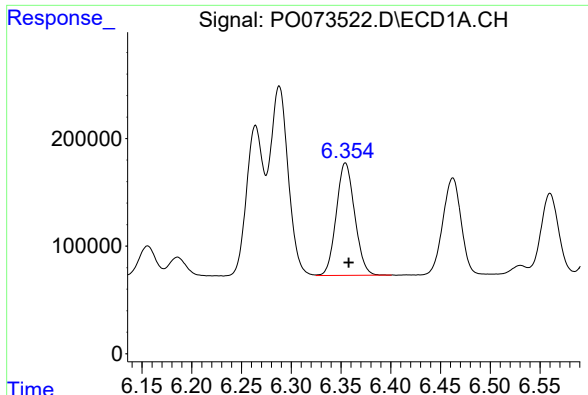
#4 AR-1016-2

R.T.: 6.288 min  
 Delta R.T.: -0.003 min  
 Response: 2243263  
 Conc: 487.30 ng/ml



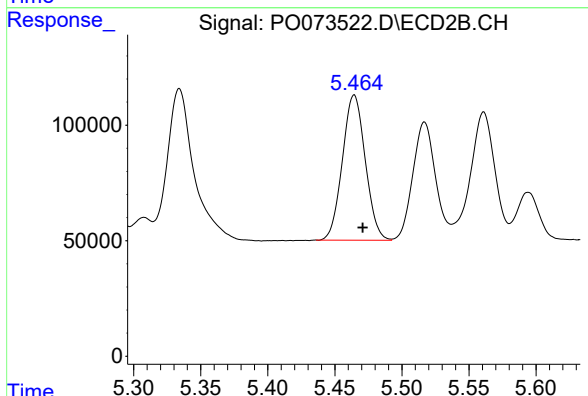
#4 AR-1016-2

R.T.: 5.275 min  
 Delta R.T.: -0.006 min  
 Response: 1397732  
 Conc: 499.77 ng/ml

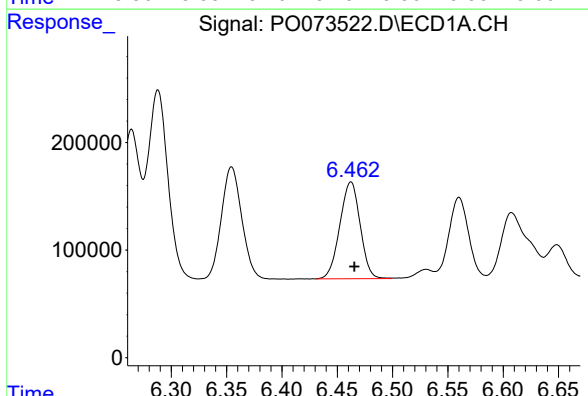


#5 AR-1016-3  
 R.T.: 6.355 min  
 Delta R.T.: -0.003 min  
 Response: 1342809  
 Conc: 490.39 ng/ml

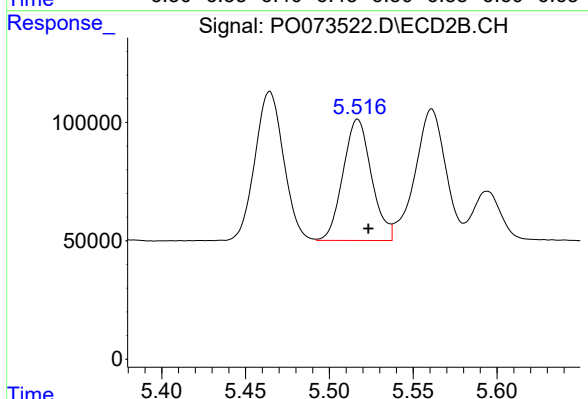
Instrument :  
 ECD\_O  
 ClientSampleId :



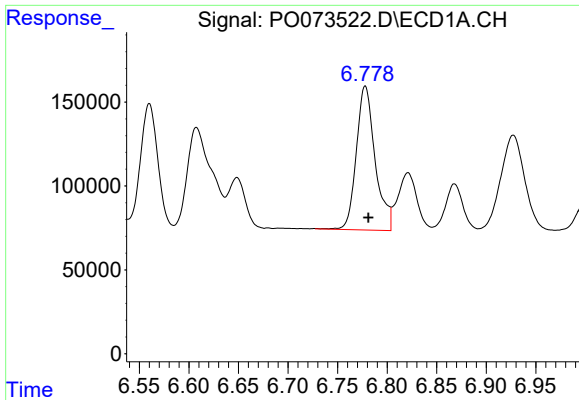
#5 AR-1016-3  
 R.T.: 5.464 min  
 Delta R.T.: -0.006 min  
 Response: 744414  
 Conc: 500.60 ng/ml



#6 AR-1016-4  
 R.T.: 6.462 min  
 Delta R.T.: -0.003 min  
 Response: 1148705  
 Conc: 503.28 ng/ml



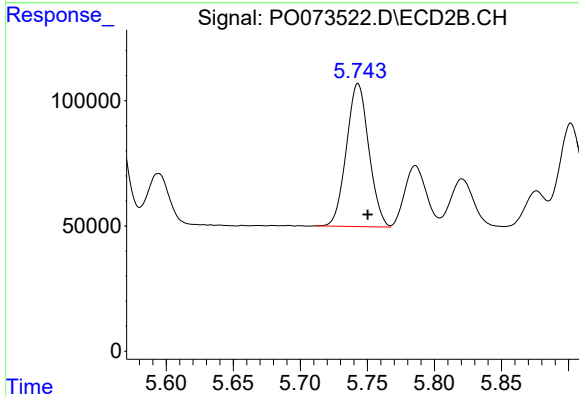
#6 AR-1016-4  
 R.T.: 5.517 min  
 Delta R.T.: -0.006 min  
 Response: 605484  
 Conc: 509.47 ng/ml



#7 AR-1016-5

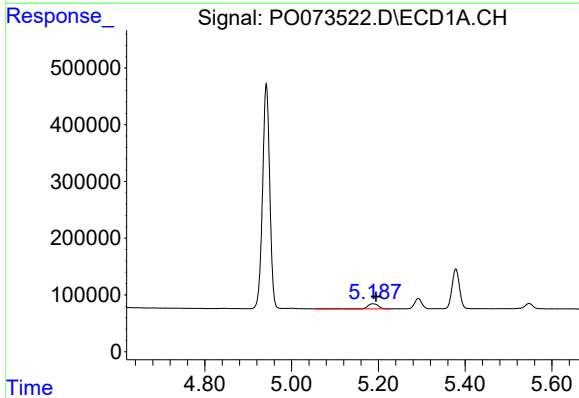
R.T.: 6.778 min  
 Delta R.T.: -0.003 min  
 Response: 1134123  
 Conc: 504.42 ng/ml

Instrument :  
 ECD\_O  
 ClientSampleId :



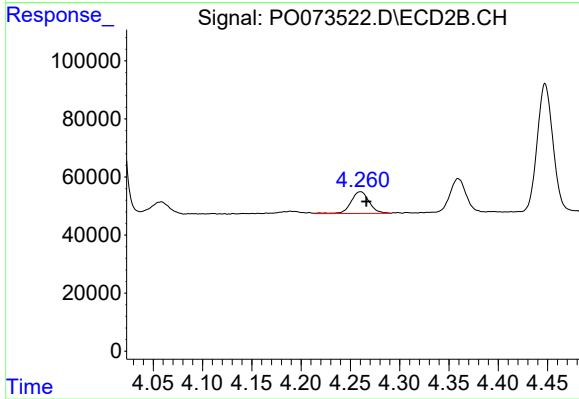
#7 AR-1016-5

R.T.: 5.743 min  
 Delta R.T.: -0.007 min  
 Response: 664353  
 Conc: 441.34 ng/ml



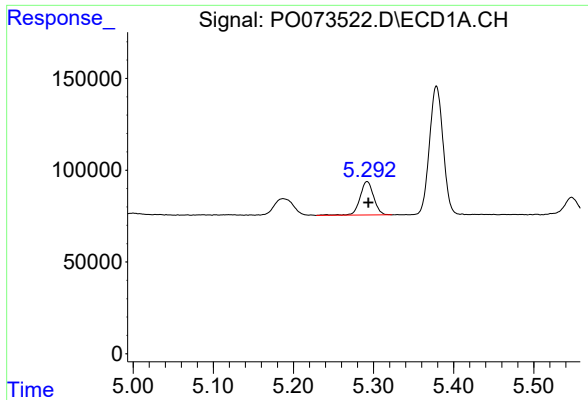
#8 AR-1221-1

R.T.: 5.188 min  
 Delta R.T.: -0.007 min  
 Response: 158596  
 Conc: 159.88 ng/ml



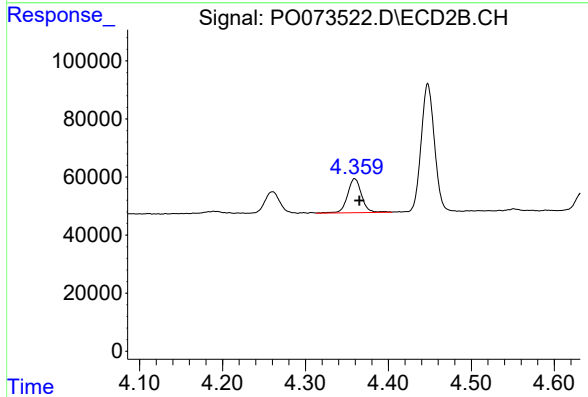
#8 AR-1221-1

R.T.: 4.260 min  
 Delta R.T.: -0.006 min  
 Response: 96229  
 Conc: 170.73 ng/ml

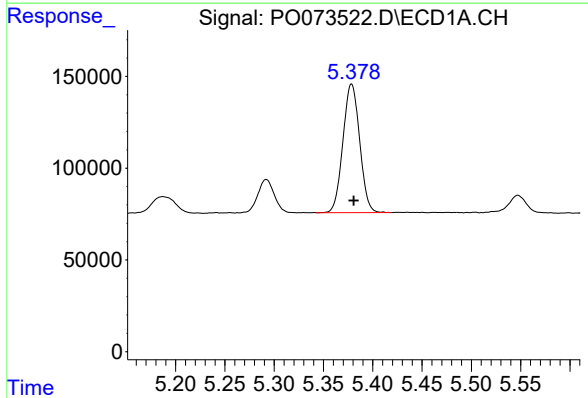


#9 AR-1221-2  
 R.T.: 5.292 min  
 Delta R.T.: -0.002 min  
 Response: 216571  
 Conc: 307.93 ng/ml

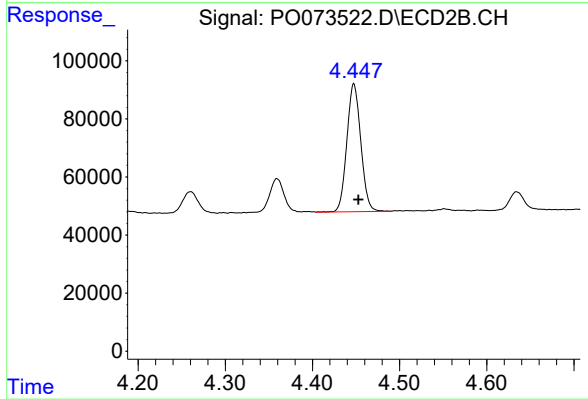
Instrument :  
 ECD\_O  
 ClientSampleId :



#9 AR-1221-2  
 R.T.: 4.359 min  
 Delta R.T.: -0.005 min  
 Response: 137530  
 Conc: 340.22 ng/ml

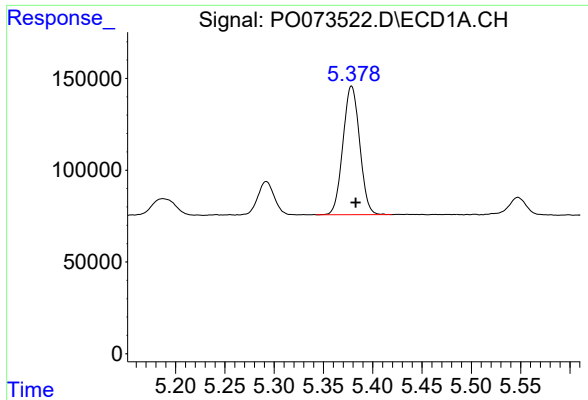


#10 AR-1221-3  
 R.T.: 5.379 min  
 Delta R.T.: -0.002 min  
 Response: 829471  
 Conc: 369.95 ng/ml



#10 AR-1221-3  
 R.T.: 4.448 min  
 Delta R.T.: -0.005 min  
 Response: 490301  
 Conc: 369.17 ng/ml

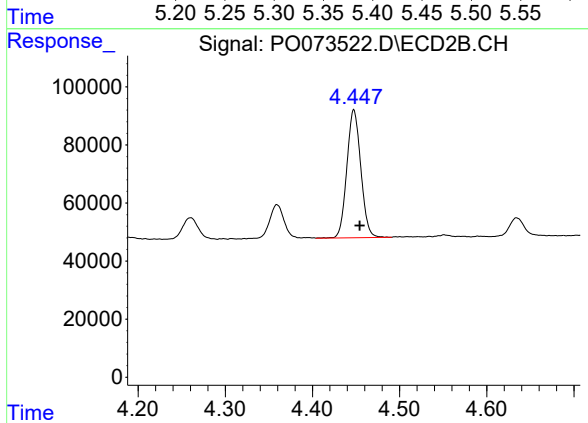




#11 AR-1232-1

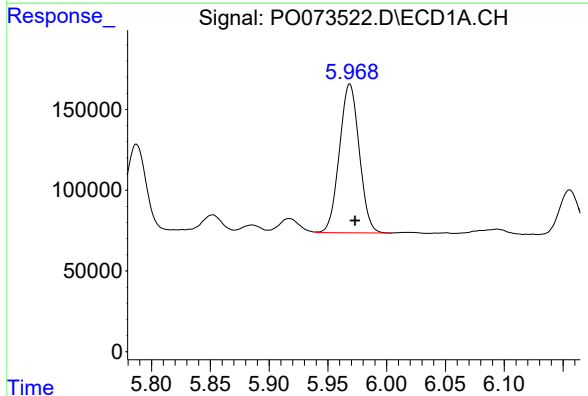
R.T.: 5.379 min  
 Delta R.T.: -0.004 min  
 Response: 829471  
 Conc: 449.46 ng/ml

Instrument :  
 ECD\_O  
 ClientSampleId :



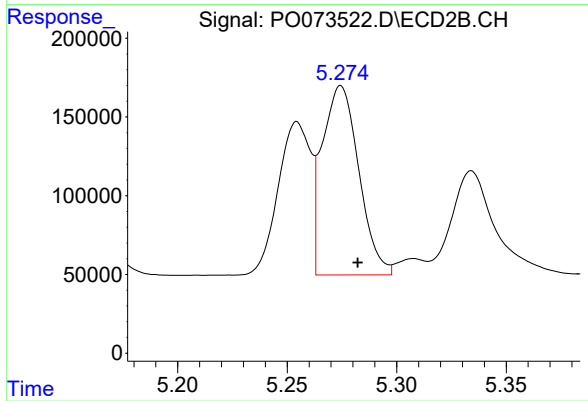
#11 AR-1232-1

R.T.: 4.448 min  
 Delta R.T.: -0.007 min  
 Response: 490301  
 Conc: 431.08 ng/ml



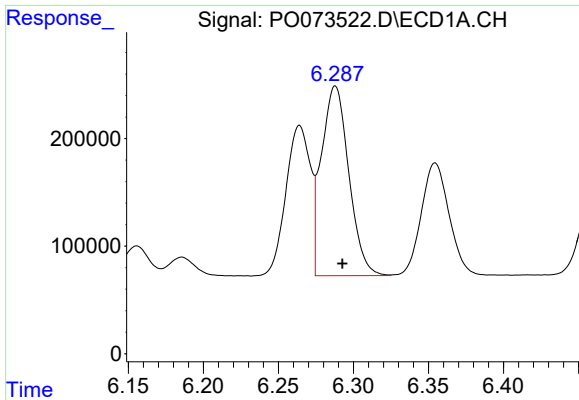
#12 AR-1232-2

R.T.: 5.969 min  
 Delta R.T.: -0.005 min  
 Response: 1080000  
 Conc: 1134.90 ng/ml



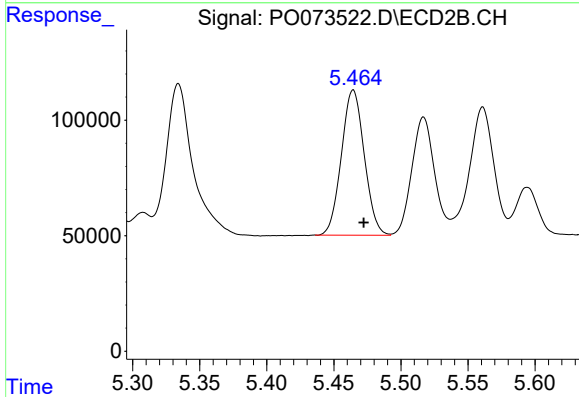
#12 AR-1232-2

R.T.: 5.275 min  
 Delta R.T.: -0.008 min  
 Response: 1397732  
 Conc: 1169.46 ng/ml

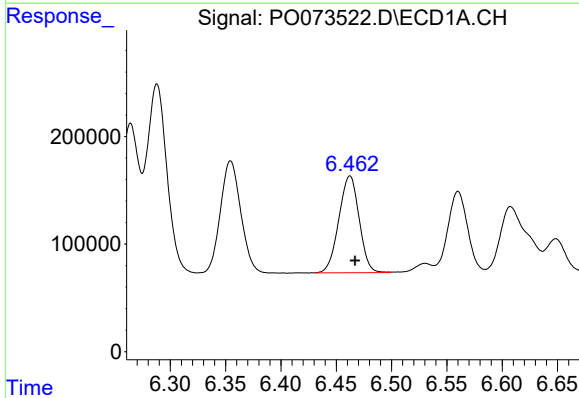


#13 AR-1232-3  
 R.T.: 6.288 min  
 Delta R.T.: -0.005 min  
 Response: 2243263  
 Conc: 1146.79 ng/ml

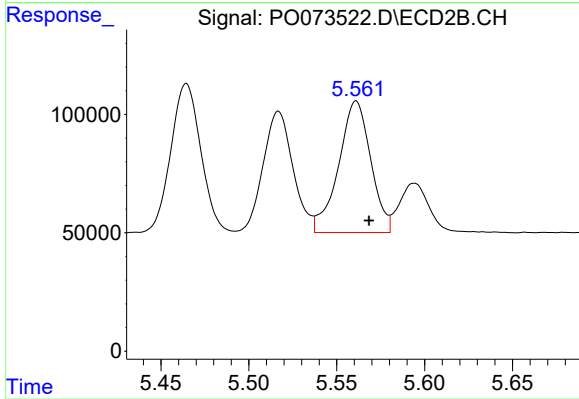
Instrument :  
 ECD\_O  
 ClientSampleId :



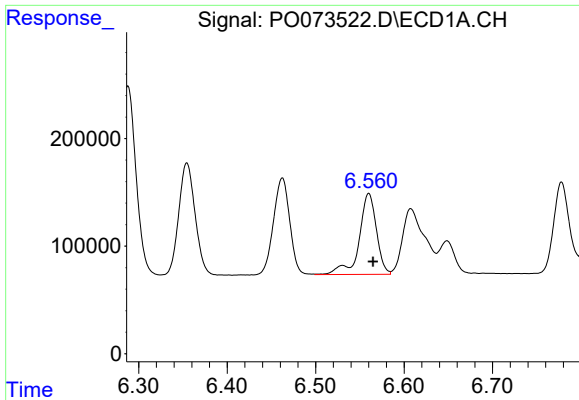
#13 AR-1232-3  
 R.T.: 5.464 min  
 Delta R.T.: -0.008 min  
 Response: 744414  
 Conc: 1186.66 ng/ml



#14 AR-1232-4  
 R.T.: 6.462 min  
 Delta R.T.: -0.005 min  
 Response: 1148705  
 Conc: 1161.82 ng/ml



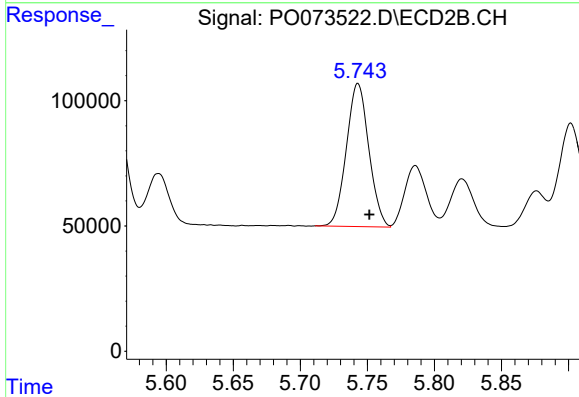
#14 AR-1232-4  
 R.T.: 5.561 min  
 Delta R.T.: -0.007 min  
 Response: 707772  
 Conc: 1312.80 ng/ml



#15 AR-1232-5

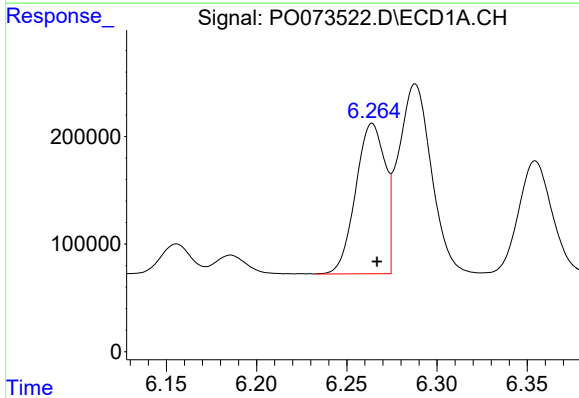
R.T.: 6.560 min  
 Delta R.T.: -0.005 min  
 Response: 1019971  
 Conc: 1514.99 ng/ml

Instrument :  
 ECD\_O  
 ClientSampleId :



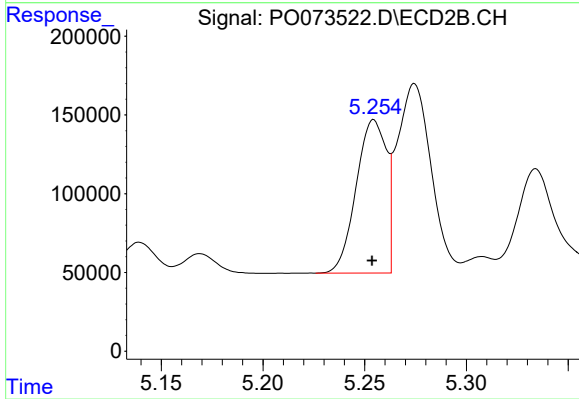
#15 AR-1232-5

R.T.: 5.743 min  
 Delta R.T.: -0.009 min  
 Response: 664353  
 Conc: 1124.54 ng/ml



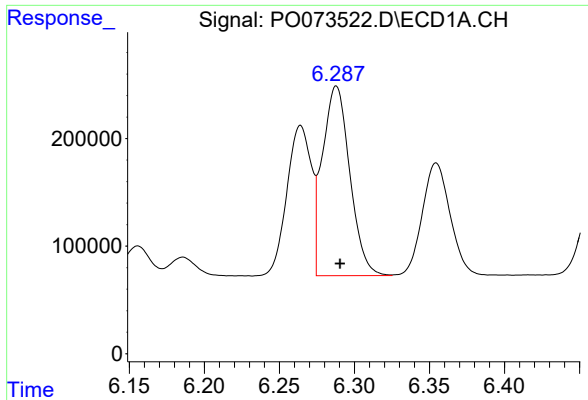
#16 AR-1242-1

R.T.: 6.264 min  
 Delta R.T.: -0.003 min  
 Response: 1583695  
 Conc: 600.46 ng/ml



#16 AR-1242-1

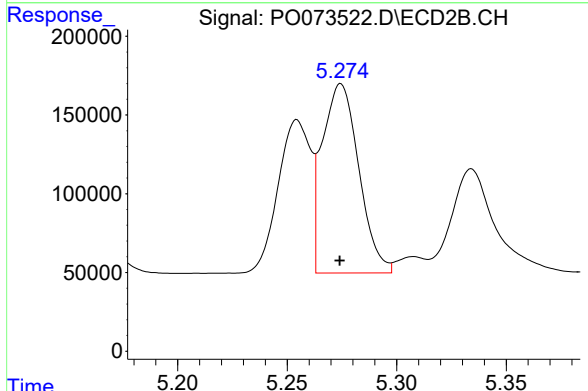
R.T.: 5.254 min  
 Delta R.T.: 0.000 min  
 Response: 1003647  
 Conc: 613.65 ng/ml



#17 AR-1242-2

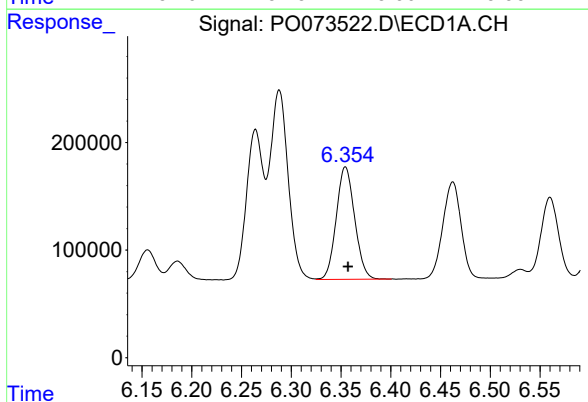
R.T.: 6.288 min  
 Delta R.T.: -0.003 min  
 Response: 2243263  
 Conc: 613.68 ng/ml

Instrument :  
 ECD\_O  
 ClientSampleId :



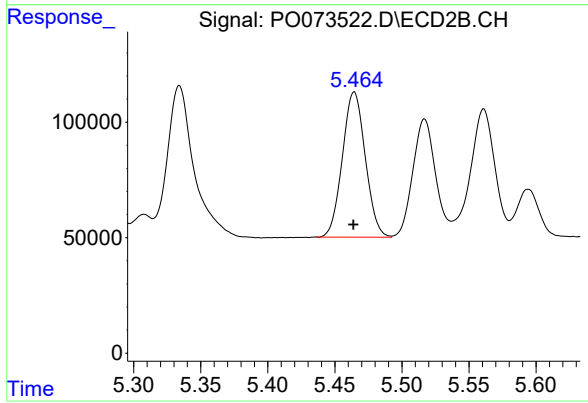
#17 AR-1242-2

R.T.: 5.275 min  
 Delta R.T.: 0.000 min  
 Response: 1397732  
 Conc: 617.97 ng/ml



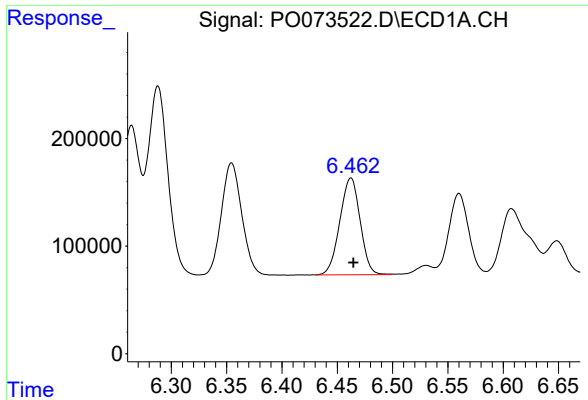
#18 AR-1242-3

R.T.: 6.355 min  
 Delta R.T.: -0.002 min  
 Response: 1342809  
 Conc: 608.90 ng/ml



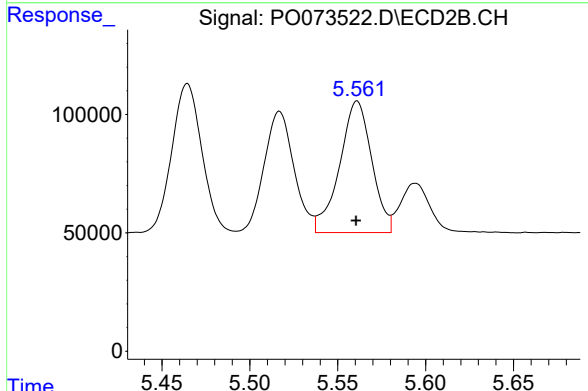
#18 AR-1242-3

R.T.: 5.464 min  
 Delta R.T.: 0.000 min  
 Response: 744414  
 Conc: 620.03 ng/ml

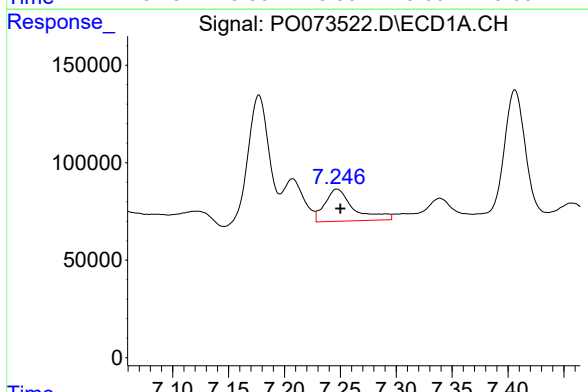


#19 AR-1242-4  
 R.T.: 6.462 min  
 Delta R.T.: -0.002 min  
 Response: 1148705  
 Conc: 618.86 ng/ml

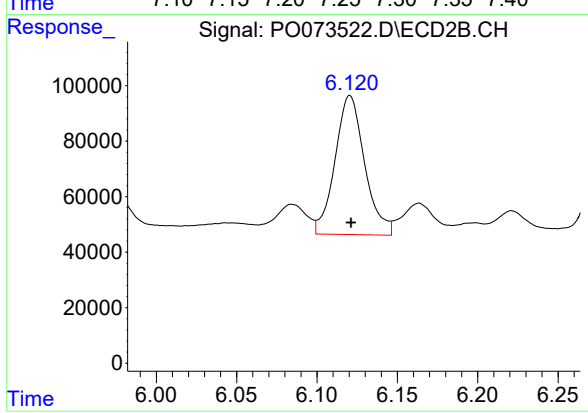
Instrument :  
 ECD\_O  
 ClientSampled :



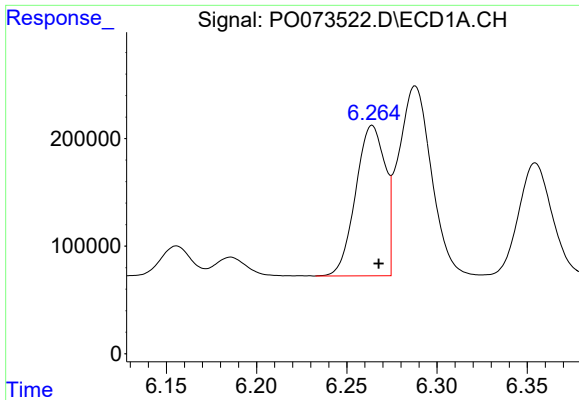
#19 AR-1242-4  
 R.T.: 5.561 min  
 Delta R.T.: 0.000 min  
 Response: 707772  
 Conc: 643.96 ng/ml



#20 AR-1242-5  
 R.T.: 7.247 min  
 Delta R.T.: -0.003 min  
 Response: 296511  
 Conc: 140.97 ng/ml



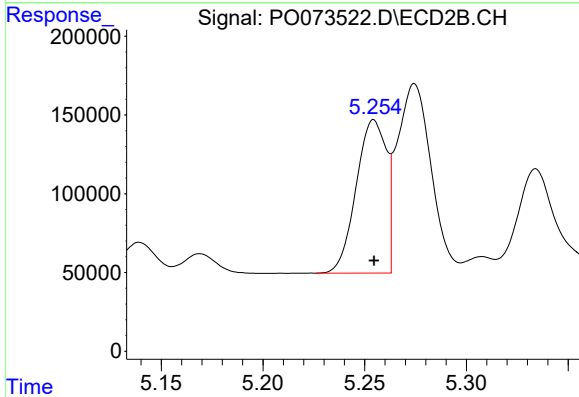
#20 AR-1242-5  
 R.T.: 6.120 min  
 Delta R.T.: 0.000 min  
 Response: 642778  
 Conc: 415.13 ng/ml



#21 AR-1248-1

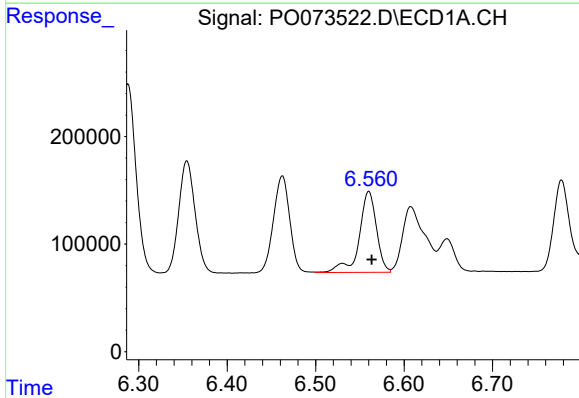
R.T.: 6.264 min  
 Delta R.T.: -0.003 min  
 Response: 1583695  
 Conc: 792.20 ng/ml

Instrument :  
 ECD\_O  
 ClientSampled :



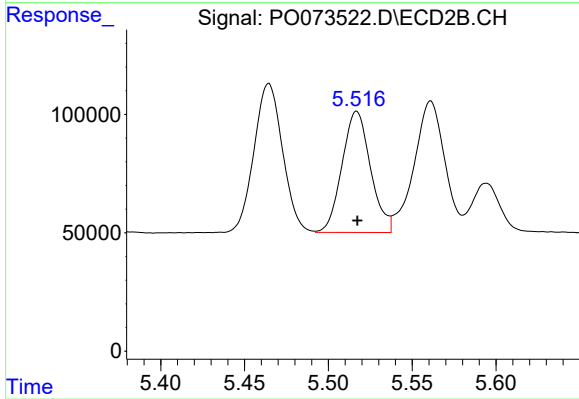
#21 AR-1248-1

R.T.: 5.254 min  
 Delta R.T.: 0.000 min  
 Response: 1003647  
 Conc: 800.31 ng/ml



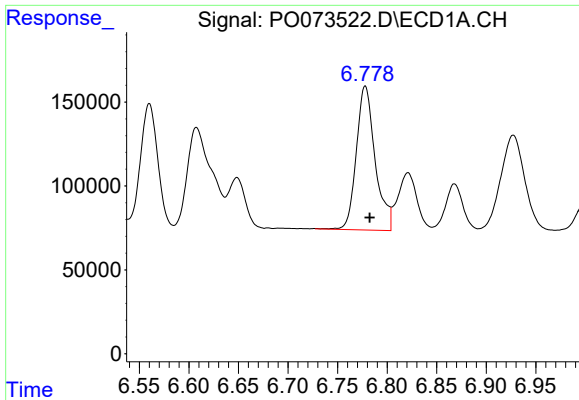
#22 AR-1248-2

R.T.: 6.560 min  
 Delta R.T.: -0.003 min  
 Response: 1019971  
 Conc: 394.54 ng/ml



#22 AR-1248-2

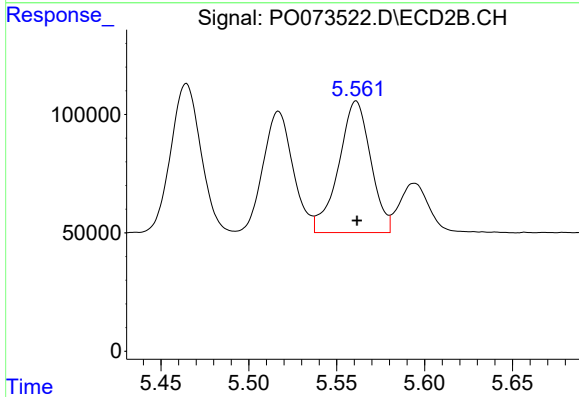
R.T.: 5.517 min  
 Delta R.T.: 0.000 min  
 Response: 605484  
 Conc: 358.03 ng/ml



#23 AR-1248-3

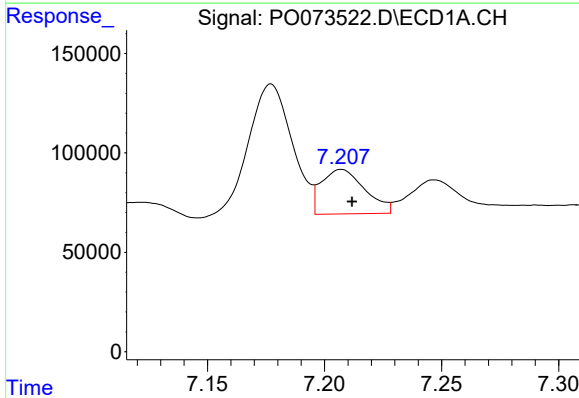
R.T.: 6.778 min  
 Delta R.T.: -0.004 min  
 Response: 1134123  
 Conc: 370.08 ng/ml

Instrument :  
 ECD\_O  
 ClientSampled :



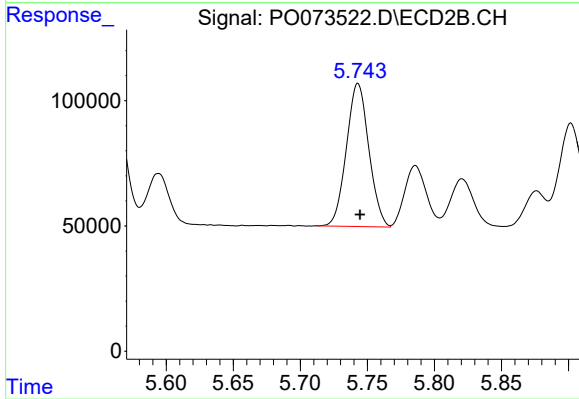
#23 AR-1248-3

R.T.: 5.561 min  
 Delta R.T.: 0.000 min  
 Response: 707772  
 Conc: 414.76 ng/ml



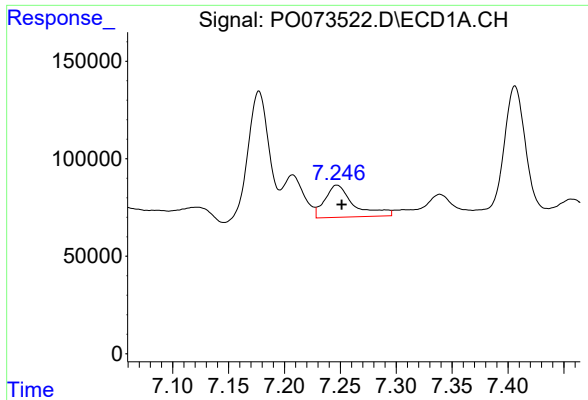
#24 AR-1248-4

R.T.: 7.207 min  
 Delta R.T.: -0.005 min  
 Response: 289811  
 Conc: 77.69 ng/ml



#24 AR-1248-4

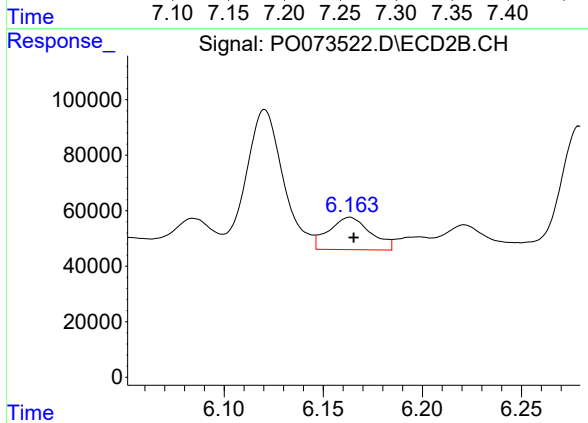
R.T.: 5.743 min  
 Delta R.T.: -0.002 min  
 Response: 664353  
 Conc: 323.18 ng/ml



#25 AR-1248-5

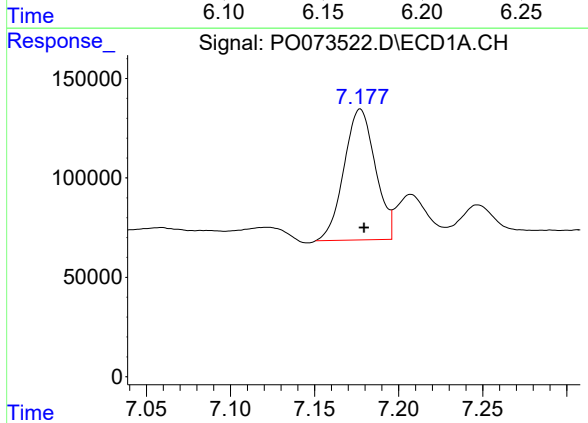
R.T.: 7.247 min  
 Delta R.T.: -0.004 min  
 Response: 296511  
 Conc: 82.87 ng/ml

Instrument :  
 ECD\_O  
 ClientSampleId :



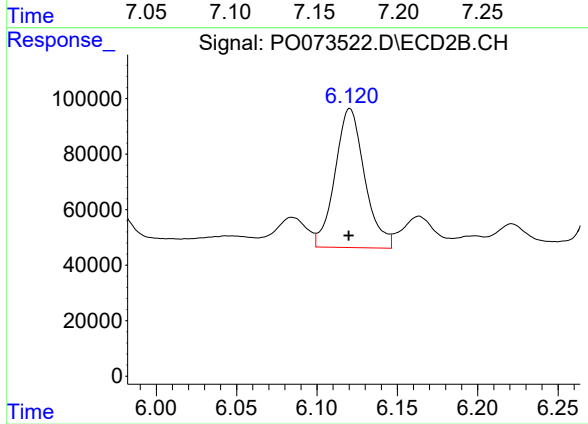
#25 AR-1248-5

R.T.: 6.163 min  
 Delta R.T.: -0.002 min  
 Response: 171209  
 Conc: 77.10 ng/ml



#26 AR-1254-1

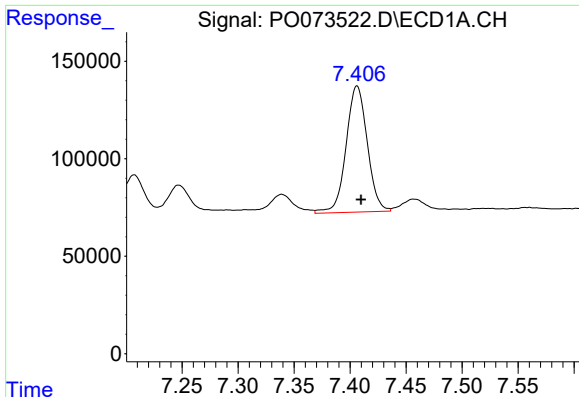
R.T.: 7.177 min  
 Delta R.T.: -0.002 min  
 Response: 854500  
 Conc: 247.08 ng/ml



#26 AR-1254-1

R.T.: 6.120 min  
 Delta R.T.: 0.000 min  
 Response: 642778  
 Conc: 206.43 ng/ml

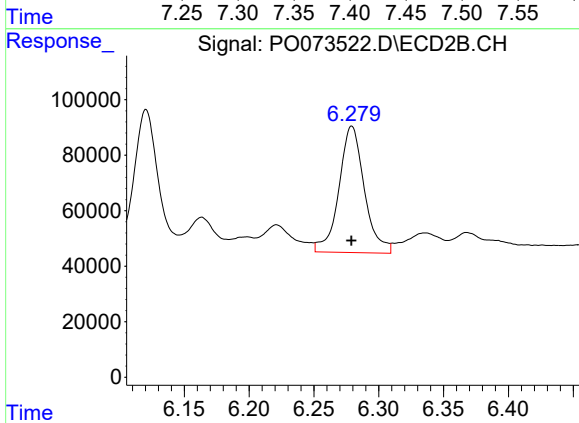




#27 AR-1254-2

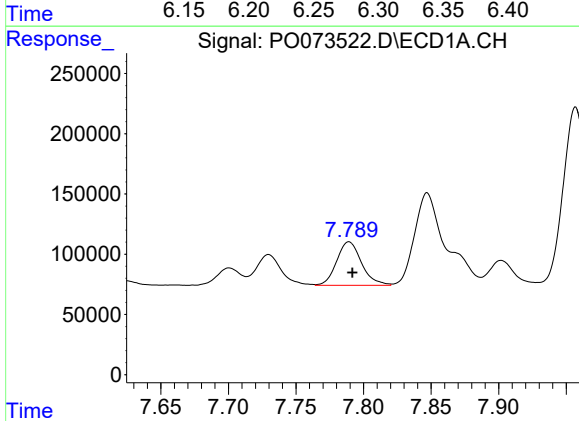
R.T.: 7.406 min  
 Delta R.T.: -0.004 min  
 Response: 853164  
 Conc: 156.60 ng/ml

Instrument :  
 ECD\_O  
 ClientSampleId :



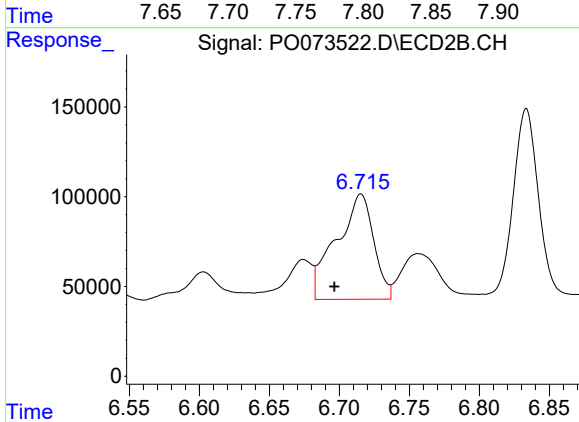
#27 AR-1254-2

R.T.: 6.279 min  
 Delta R.T.: 0.000 min  
 Response: 621258  
 Conc: 227.57 ng/ml



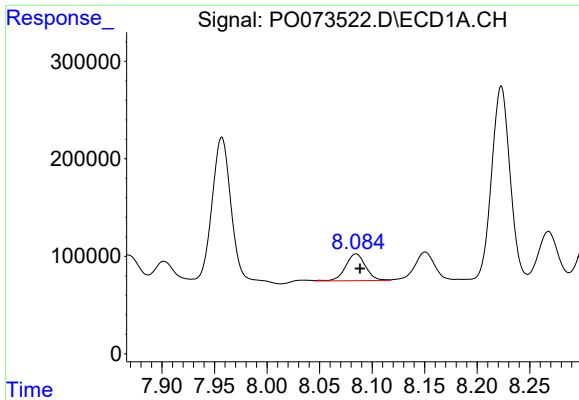
#28 AR-1254-3

R.T.: 7.789 min  
 Delta R.T.: -0.002 min  
 Response: 461294  
 Conc: 81.40 ng/ml



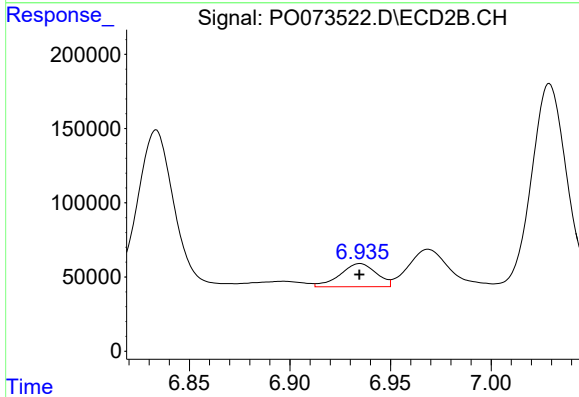
#28 AR-1254-3

R.T.: 6.715 min  
 Delta R.T.: 0.019 min  
 Response: 1089345  
 Conc: 257.58 ng/ml

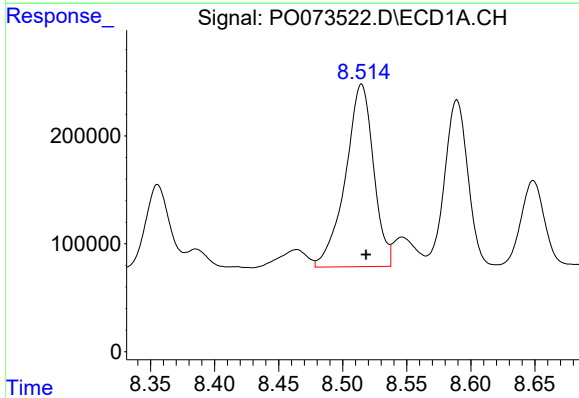


#29 AR-1254-4  
 R.T.: 8.085 min  
 Delta R.T.: -0.004 min  
 Response: 363532  
 Conc: 75.14 ng/ml

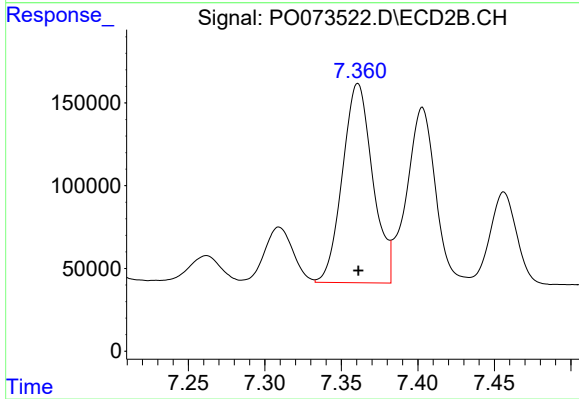
Instrument :  
 ECD\_O  
 ClientSampled :



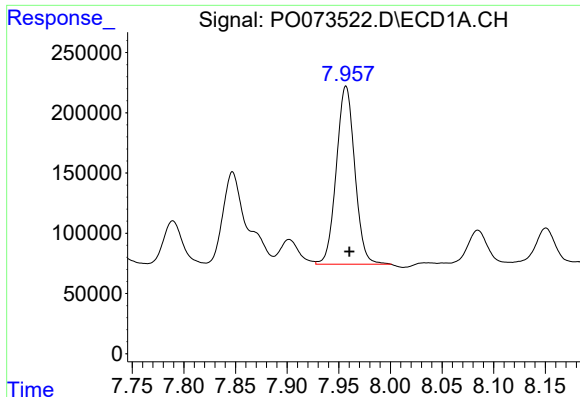
#29 AR-1254-4  
 R.T.: 6.935 min  
 Delta R.T.: 0.000 min  
 Response: 196765  
 Conc: 68.15 ng/ml



#30 AR-1254-5  
 R.T.: 8.515 min  
 Delta R.T.: -0.004 min  
 Response: 2582467  
 Conc: 542.49 ng/ml



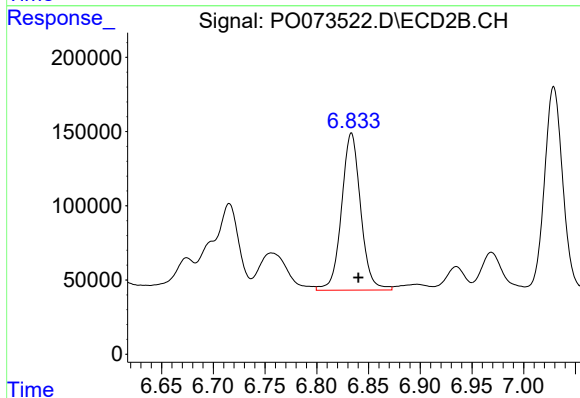
#30 AR-1254-5  
 R.T.: 7.361 min  
 Delta R.T.: 0.000 min  
 Response: 1658216  
 Conc: 449.00 ng/ml



#31 AR-1260-1

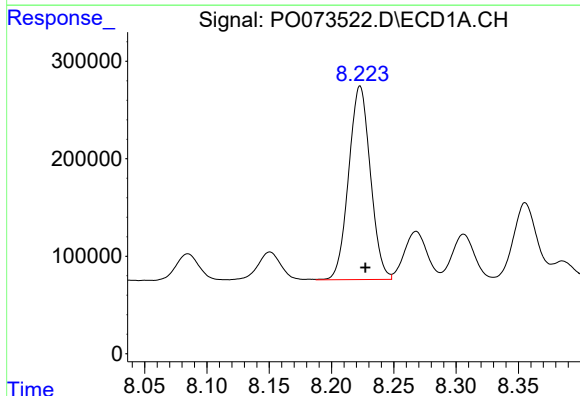
R.T.: 7.957 min  
 Delta R.T.: -0.004 min  
 Response: 1838763  
 Conc: 455.68 ng/ml

Instrument :  
 ECD\_O  
 ClientSampled :



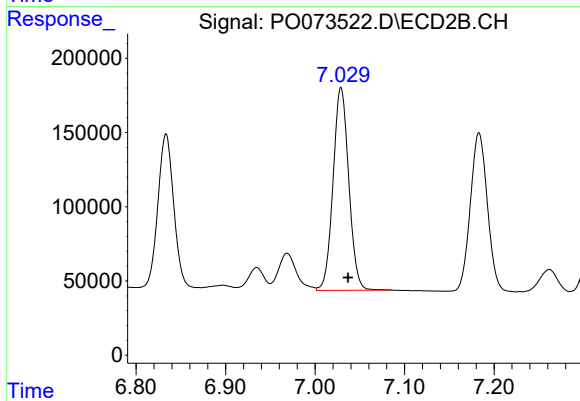
#31 AR-1260-1

R.T.: 6.834 min  
 Delta R.T.: -0.007 min  
 Response: 1365027  
 Conc: 508.05 ng/ml



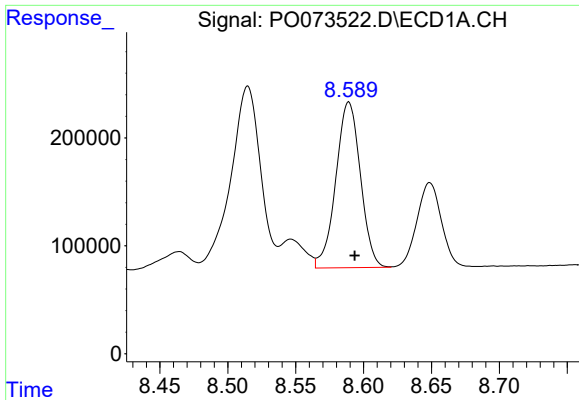
#32 AR-1260-2

R.T.: 8.223 min  
 Delta R.T.: -0.004 min  
 Response: 2410235  
 Conc: 438.55 ng/ml



#32 AR-1260-2

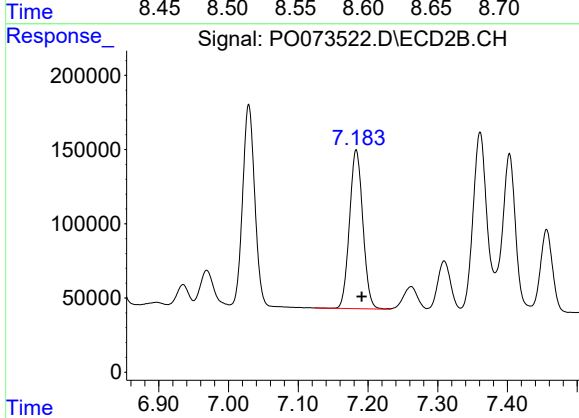
R.T.: 7.029 min  
 Delta R.T.: -0.008 min  
 Response: 1662646  
 Conc: 498.47 ng/ml



#33 AR-1260-3

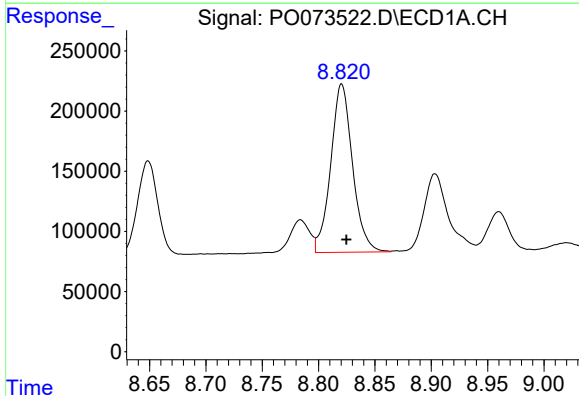
R.T.: 8.589 min  
 Delta R.T.: -0.004 min  
 Response: 1936331  
 Conc: 436.35 ng/ml

Instrument :  
 ECD\_O  
 ClientSampleId :



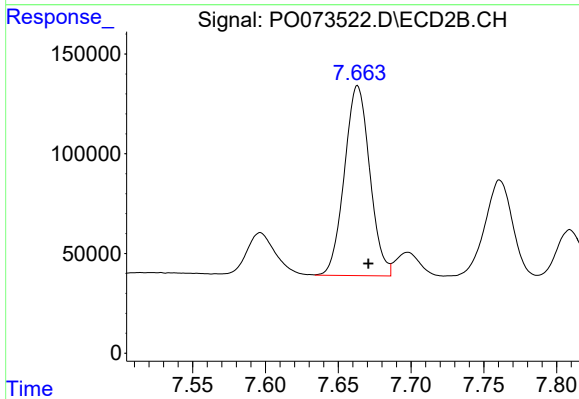
#33 AR-1260-3

R.T.: 7.183 min  
 Delta R.T.: -0.008 min  
 Response: 1423158  
 Conc: 460.69 ng/ml



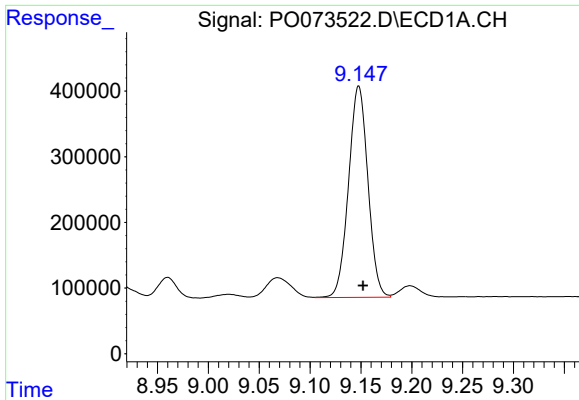
#34 AR-1260-4

R.T.: 8.821 min  
 Delta R.T.: -0.004 min  
 Response: 1885595  
 Conc: 436.87 ng/ml



#34 AR-1260-4

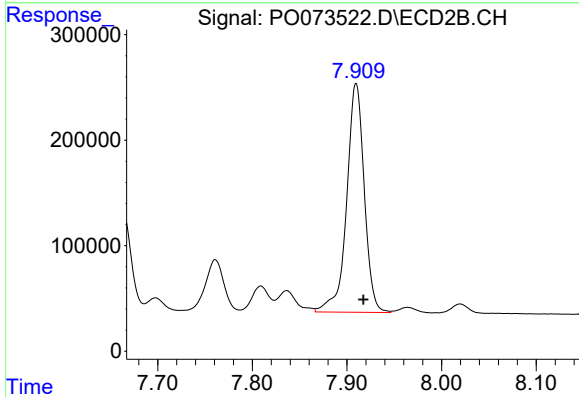
R.T.: 7.663 min  
 Delta R.T.: -0.008 min  
 Response: 1154291  
 Conc: 469.07 ng/ml



#35 AR-1260-5

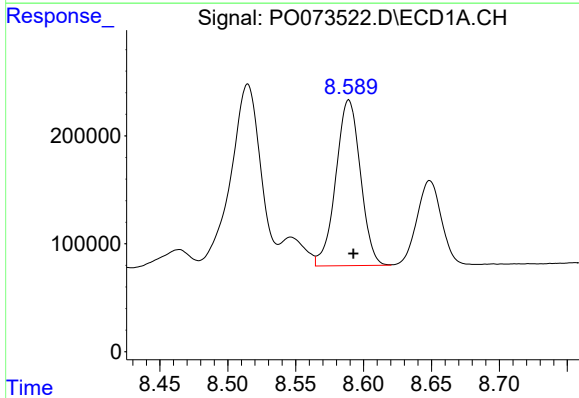
R.T.: 9.148 min  
 Delta R.T.: -0.004 min  
 Response: 4261562  
 Conc: 431.56 ng/ml

Instrument :  
 ECD\_O  
 ClientSampled :



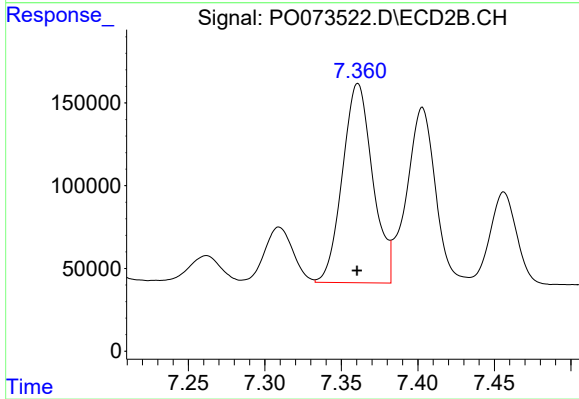
#35 AR-1260-5

R.T.: 7.910 min  
 Delta R.T.: -0.008 min  
 Response: 2804605  
 Conc: 452.72 ng/ml



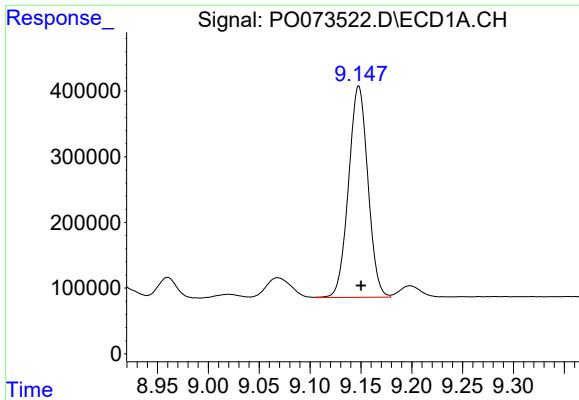
#36 AR-1262-1

R.T.: 8.589 min  
 Delta R.T.: -0.003 min  
 Response: 1936331  
 Conc: 310.14 ng/ml



#36 AR-1262-1

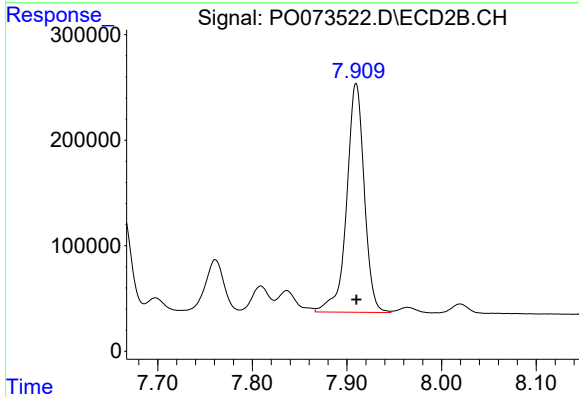
R.T.: 7.361 min  
 Delta R.T.: 0.000 min  
 Response: 1658216  
 Conc: 855.66 ng/ml



#37 AR-1262-2

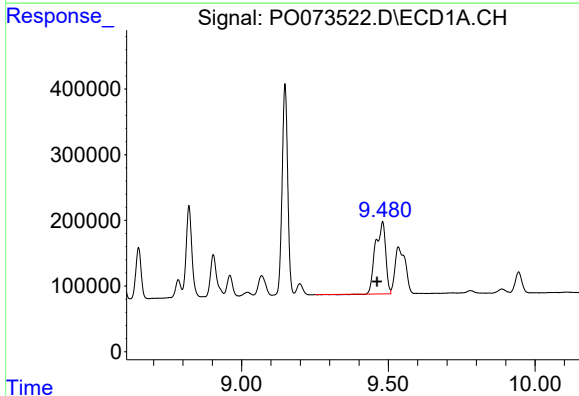
R.T.: 9.148 min  
 Delta R.T.: -0.002 min  
 Response: 4261562  
 Conc: 393.96 ng/ml

Instrument :  
 ECD\_O  
 ClientSampleId :



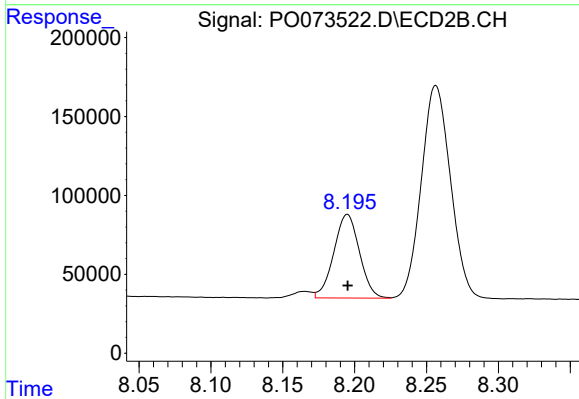
#37 AR-1262-2

R.T.: 7.910 min  
 Delta R.T.: 0.000 min  
 Response: 2804605  
 Conc: 427.76 ng/ml



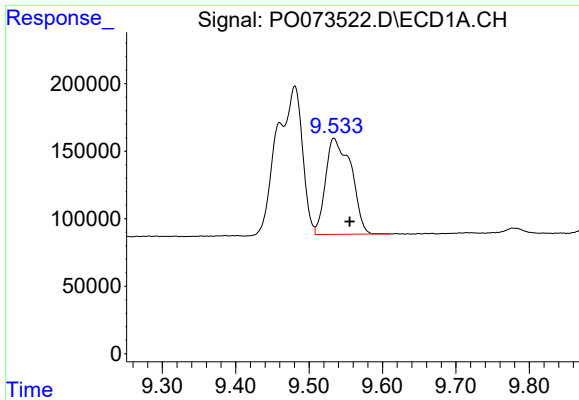
#38 AR-1262-3

R.T.: 9.480 min  
 Delta R.T.: 0.019 min  
 Response: 2626585  
 Conc: 357.85 ng/ml



#38 AR-1262-3

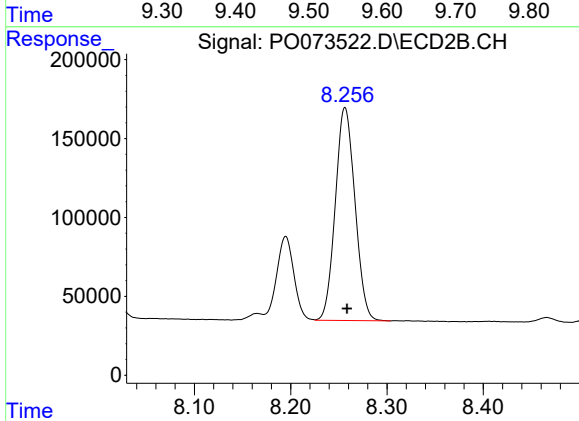
R.T.: 8.195 min  
 Delta R.T.: 0.000 min  
 Response: 659778  
 Conc: 244.53 ng/ml



#39 AR-1262-4

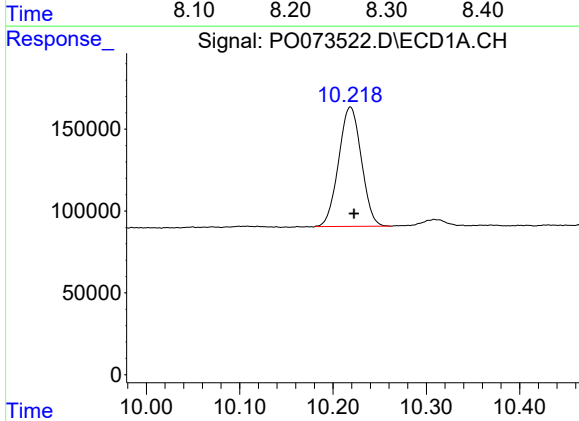
R.T.: 9.534 min  
 Delta R.T.: -0.021 min  
 Response: 1725575  
 Conc: 313.57 ng/ml

Instrument :  
 ECD\_O  
 ClientSampled :



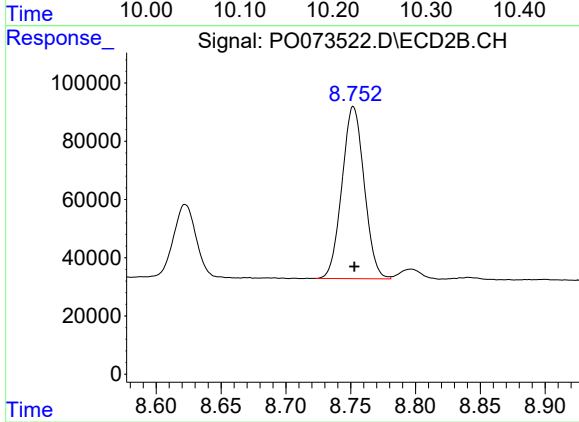
#39 AR-1262-4

R.T.: 8.257 min  
 Delta R.T.: -0.002 min  
 Response: 1911117  
 Conc: 400.26 ng/ml



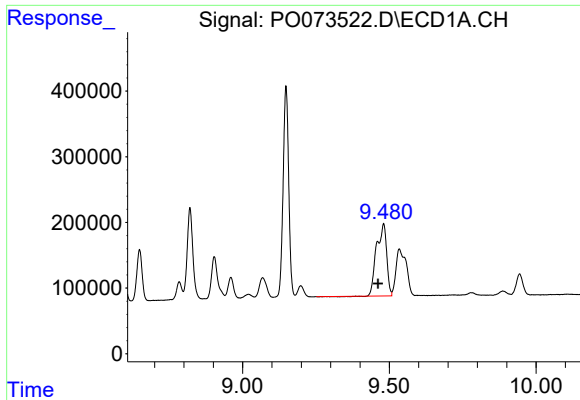
#40 AR-1262-5

R.T.: 10.219 min  
 Delta R.T.: -0.004 min  
 Response: 1233318  
 Conc: 316.85 ng/ml



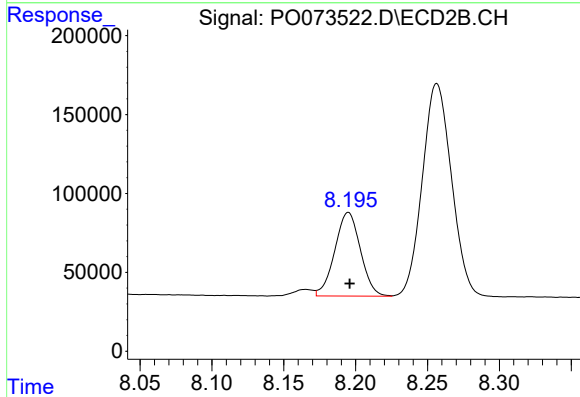
#40 AR-1262-5

R.T.: 8.752 min  
 Delta R.T.: 0.000 min  
 Response: 705577  
 Conc: 308.50 ng/ml

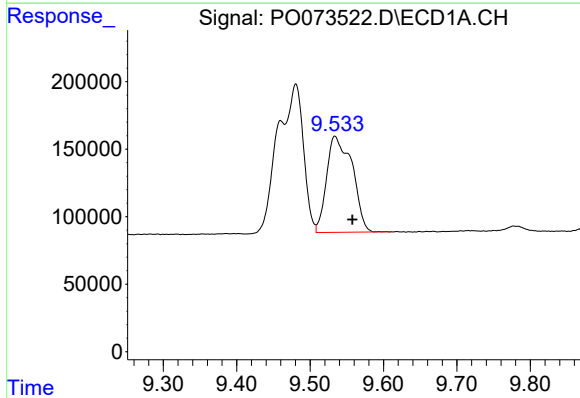


#41 AR-1268-1  
 R.T.: 9.480 min  
 Delta R.T.: 0.019 min  
 Response: 2626585  
 Conc: 188.04 ng/ml

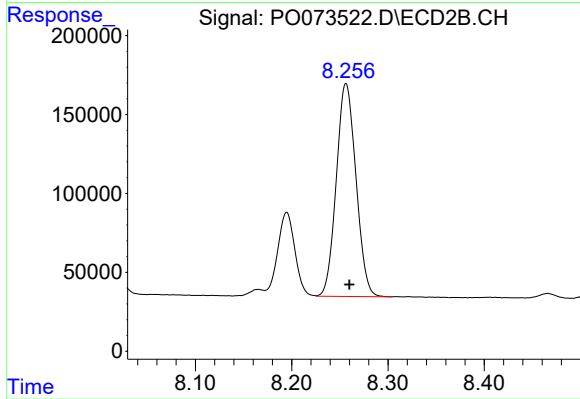
Instrument :  
 ECD\_O  
 ClientSampled :



#41 AR-1268-1  
 R.T.: 8.195 min  
 Delta R.T.: 0.000 min  
 Response: 659778  
 Conc: 80.99 ng/ml

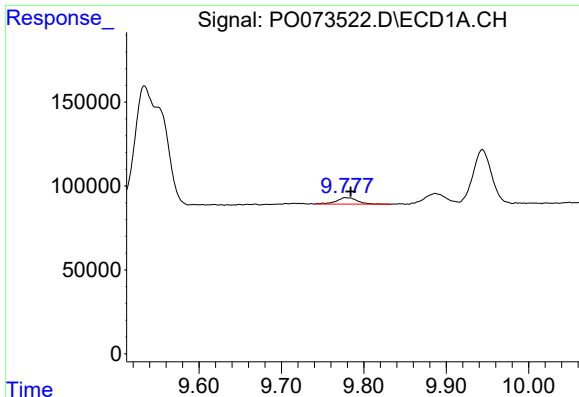


#42 AR-1268-2  
 R.T.: 9.534 min  
 Delta R.T.: -0.023 min  
 Response: 1725575  
 Conc: 142.04 ng/ml



#42 AR-1268-2  
 R.T.: 8.257 min  
 Delta R.T.: -0.003 min  
 Response: 1911117  
 Conc: 261.66 ng/ml

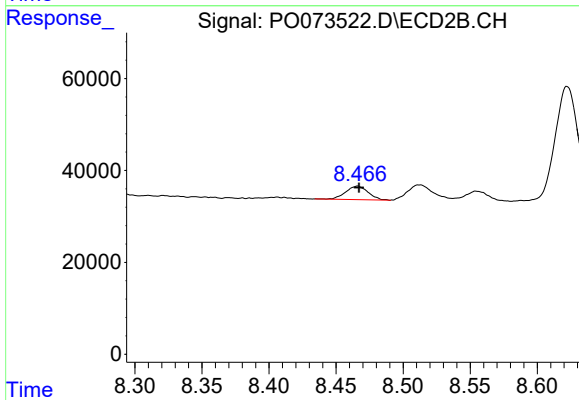




#43 AR-1268-3

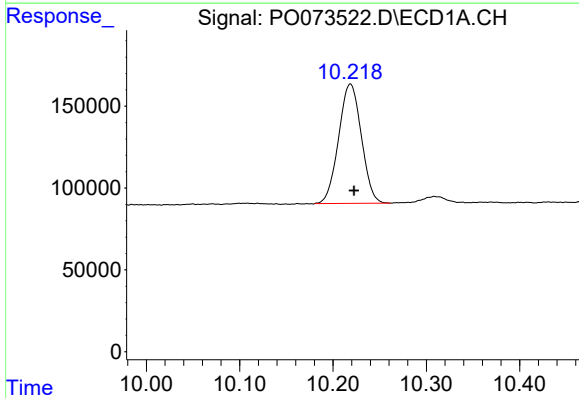
R.T.: 9.779 min  
 Delta R.T.: -0.005 min  
 Response: 69575  
 Conc: 6.60 ng/ml

Instrument :  
 ECD\_O  
 ClientSampled :



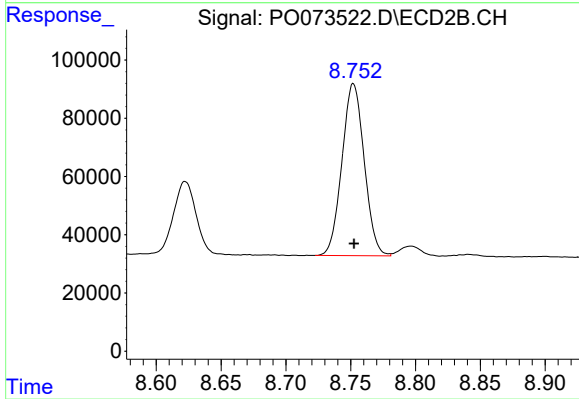
#43 AR-1268-3

R.T.: 8.466 min  
 Delta R.T.: -0.001 min  
 Response: 34190  
 Conc: 5.47 ng/ml



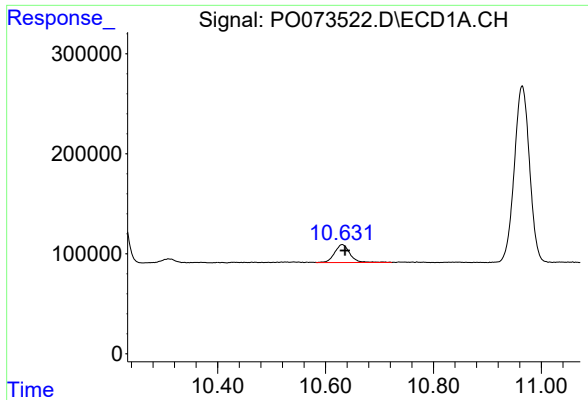
#44 AR-1268-4

R.T.: 10.219 min  
 Delta R.T.: -0.004 min  
 Response: 1233318  
 Conc: 273.39 ng/ml



#44 AR-1268-4

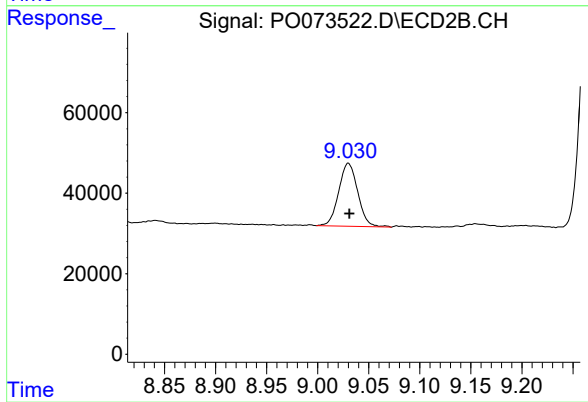
R.T.: 8.752 min  
 Delta R.T.: 0.000 min  
 Response: 705577  
 Conc: 263.41 ng/ml



#45 AR-1268-5

R.T.: 10.631 min  
Delta R.T.: -0.005 min  
Response: 354032  
Conc: 11.12 ng/ml

Instrument :  
ECD\_O  
ClientSampleId :



#45 AR-1268-5

R.T.: 9.030 min  
Delta R.T.: -0.001 min  
Response: 203703  
Conc: 11.17 ng/ml