

Data Path : Z:\pestpcbsrv\HPCHEM1\ECD_0\Data\PO112420\
 Data File : PO073529.D
 Signal(s) : Signal #1: ECD1A.CH Signal #2: ECD2B.CH
 Acq On : 24 Nov 2020 19:12
 Operator : DD\AJ
 Sample : L4597-01
 Misc :
 ALS Vial : 26 Sample Multiplier: 1

Instrument :
 ECD_0
 ClientSampled :

Integration File signal 1: autoint1.e
 Integration File signal 2: autoint2.e
 Quant Time: Nov 25 10:37:22 2020
 Quant Method : Z:\pestpcbsrv\HPCHEM1\ECD_0\methods\PO112320.M
 Quant Title : GC EXTRACTABLES
 QLast Update : Wed Nov 25 10:04:26 2020
 Response via : Initial Calibration
 Integrator: ChemStation 6890 Scale Mode: Small noise peaks clipped

Volume Inj. : 2 µl
 Signal #1 Phase : ZB-MR1 Signal #2 Phase: ZB-MR2
 Signal #1 Info : 30Mx0.32mmx 0.50µ Signal #2 Info : 30M x 0.32mm x 0.25µm

Compound	RT#1	RT#2	Resp#1	Resp#2	ng/ml	ng/ml
System Monitoring Compounds						
1) SA Tetrachlo...	4.941	4.006	2343950	1363082	28.021	27.802
2) SA Decachlor...	10.964	9.272	1831551	1023381	22.214	22.320
Target Compounds						
5) L1 AR-1016-3	6.360	0.000	22845	0	8.343	N.D. #
6) L1 AR-1016-4	6.452	0.000	45927	0	20.122	N.D. #
7) L1 AR-1016-5	6.803f	0.000	297457	0	132.300	N.D. #
8) L2 AR-1221-1	5.197	4.289f	44978	18600	45.343	33.001 #
9) L2 AR-1221-2	5.297	4.357	20864	35301	29.665	87.328 #
10) L2 AR-1221-3	5.404f	0.000	47809	0	21.323	N.D. #
11) L3 AR-1232-1	5.404f	0.000	47809	0	25.906	N.D. #
12) L3 AR-1232-2	5.990f	5.288	221295	-52874	232.544	N.D. #
14) L3 AR-1232-4	6.452	5.574	45927	194054	46.452	359.939 #
15) L3 AR-1232-5	6.554	0.000	169217	0	251.343	N.D. #
18) L4 AR-1242-3	6.360	0.000	22845	0	10.359	N.D. #
19) L4 AR-1242-4	6.452	5.574	45927	194054	24.743	176.558 #
20) L4 AR-1242-5	0.000	6.122	0	68856	N.D.	44.470 #
22) L5 AR-1248-2	6.554	0.000	169217	0	65.456	N.D. #
23) L5 AR-1248-3	6.803f	5.574	297457	194054	97.063	113.716
26) L6 AR-1254-1	0.000	6.122	0	68856	N.D.	22.113 #
27) L6 AR-1254-2	7.412	0.000	58742	0	10.782	N.D. #
28) L6 AR-1254-3	7.803	6.717f	126913	146430	22.394	34.623 #
30) L6 AR-1254-5	8.516	7.360	58932	47454	12.380	12.849
31) L7 AR-1260-1	7.956	6.832	52019	70970	12.891	26.415 #
32) L7 AR-1260-2	8.222	0.000	219222	0	39.889	N.D. #
33) L7 AR-1260-3	8.589	7.181	47898	41847	10.794	13.546 #
34) L7 AR-1260-4	8.818	0.000	40452	0	9.372	N.D. #
35) L7 AR-1260-5	9.147	7.909	84678	61202	8.575	9.879
36) L8 AR-1262-1	8.589	7.360	47898	47454	7.672	24.487 #
37) L8 AR-1262-2	9.147	7.909	84678	61202	7.828	9.335
38) L8 AR-1262-3	9.460	8.197	28365	26661	3.864	9.881 #
39) L8 AR-1262-4	9.529f	8.255	62910	44934	11.432	9.411
41) L9 AR-1268-1	9.460	8.197	28365	26661	2.031	3.273 #
42) L9 AR-1268-2	9.529f	8.255	62910	44934	5.178	6.152
45) L9 AR-1268-5	10.654f	0.000	69338	0	2.179	N.D. #

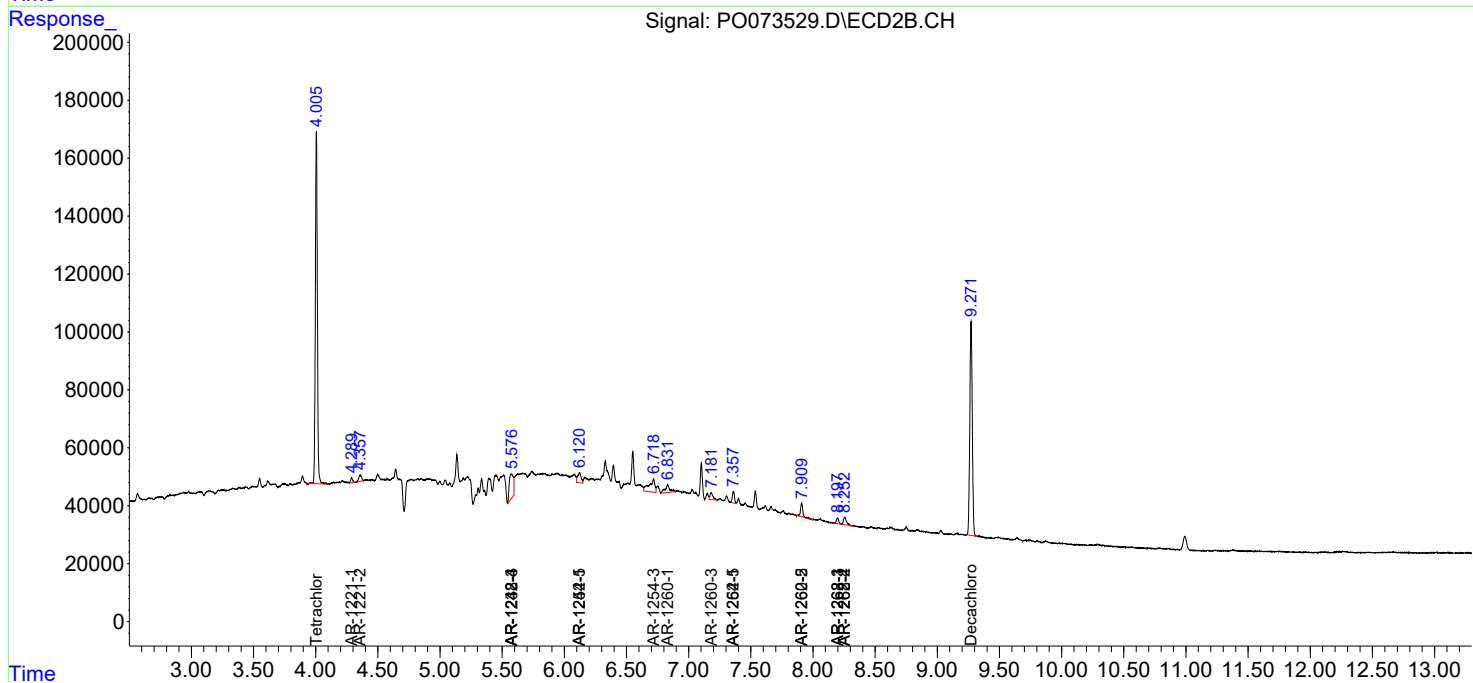
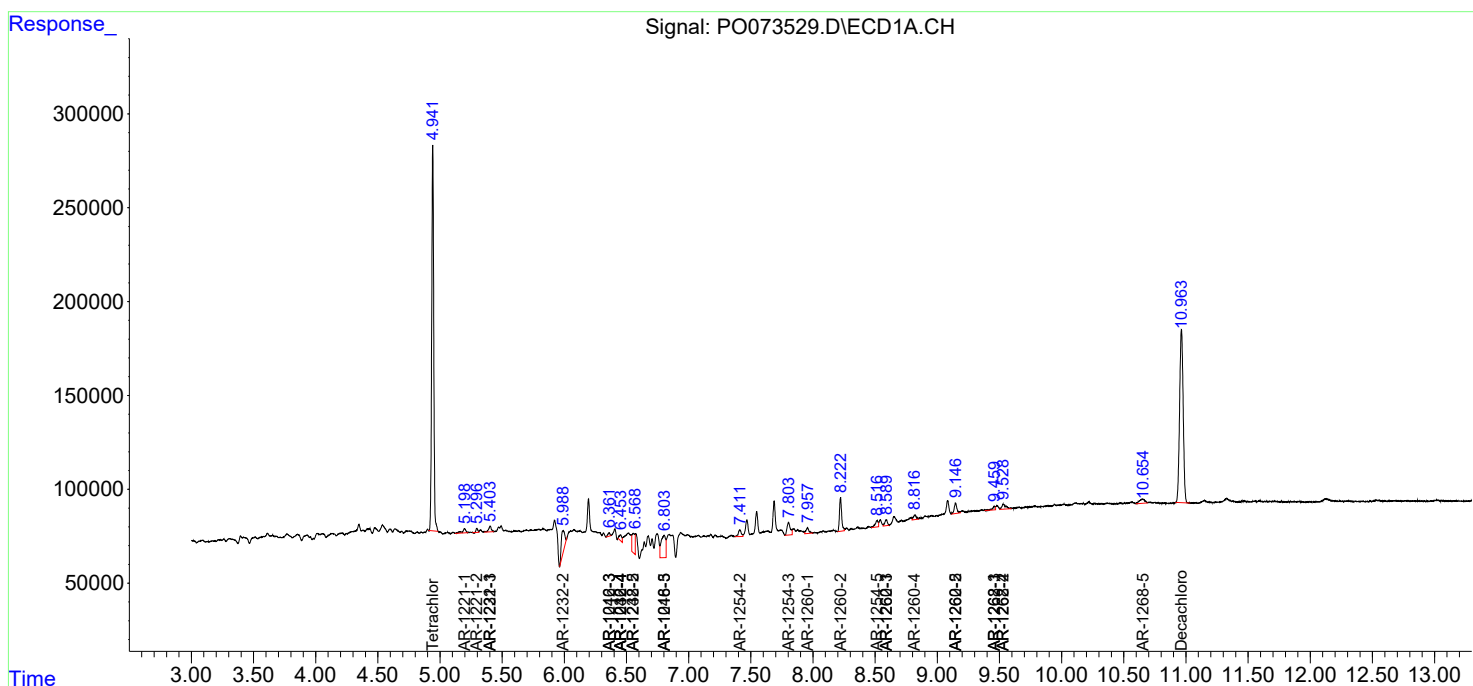
(f)=RT Delta > 1/2 Window (#)=Amounts differ by > 25% (m)=manual int.

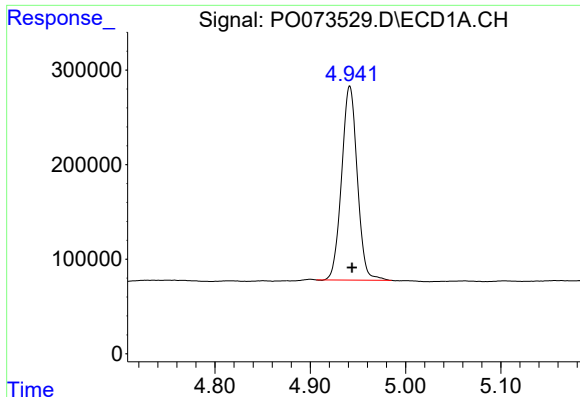
Data Path : Z:\pestpcbsrv\HPCHEM1\ECD_O\Data\PO112420\
 Data File : PO073529.D
 Signal(s) : Signal #1: ECD1A.CH Signal #2: ECD2B.CH
 Acq On : 24 Nov 2020 19:12
 Operator : DD\AJ
 Sample : L4597-01
 Misc :
 ALS Vial : 26 Sample Multiplier: 1

Instrument :
 ECD_O
 ClientSampled :

Integration File signal 1: autoint1.e
 Integration File signal 2: autoint2.e
 Quant Time: Nov 25 10:37:22 2020
 Quant Method : Z:\pestpcbsrv\HPCHEM1\ECD_O\methods\PO112320.M
 Quant Title : GC EXTRACTABLES
 QLast Update : Wed Nov 25 10:04:26 2020
 Response via : Initial Calibration
 Integrator: ChemStation 6890 Scale Mode: Small noise peaks clipped

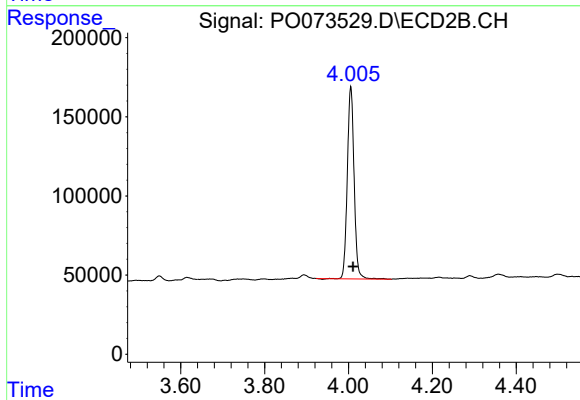
Volume Inj. : 2 µl
 Signal #1 Phase : ZB-MR1 Signal #2 Phase: ZB-MR2
 Signal #1 Info : 30Mx0.32mmx 0.50µ Signal #2 Info : 30M x 0.32mm x 0.25µm



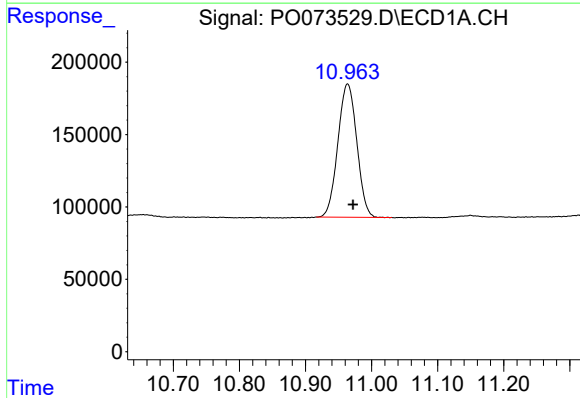


#1 Tetrachloro-m-xylene
 R.T.: 4.941 min
 Delta R.T.: -0.003 min
 Response: 2343950
 Conc: 28.02 ng/ml

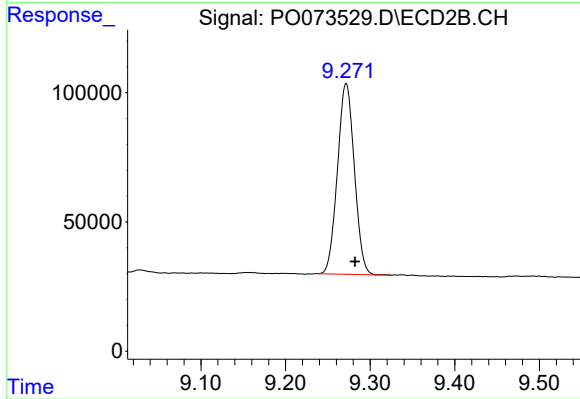
Instrument :
 ECD_O
 ClientSampled :



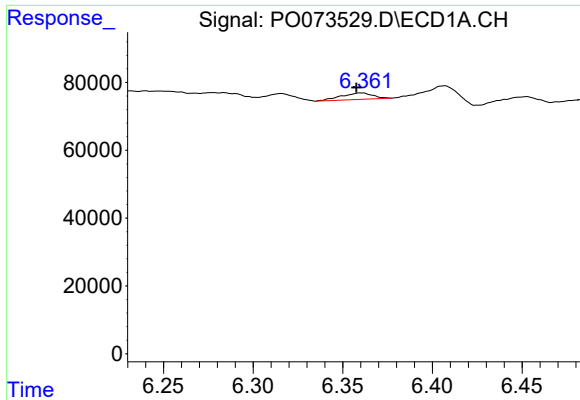
#1 Tetrachloro-m-xylene
 R.T.: 4.006 min
 Delta R.T.: -0.006 min
 Response: 1363082
 Conc: 27.80 ng/ml



#2 Decachlorobiphenyl
 R.T.: 10.964 min
 Delta R.T.: -0.008 min
 Response: 1831551
 Conc: 22.21 ng/ml



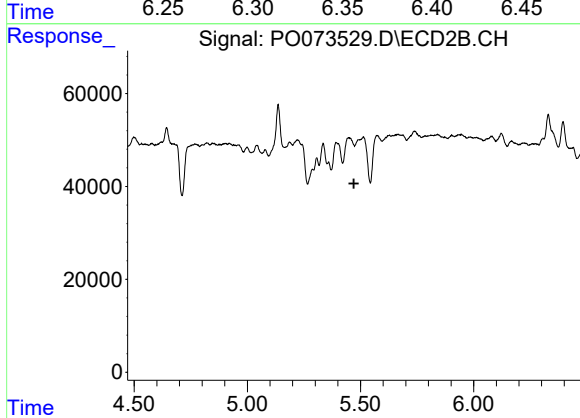
#2 Decachlorobiphenyl
 R.T.: 9.272 min
 Delta R.T.: -0.010 min
 Response: 1023381
 Conc: 22.32 ng/ml



#5 AR-1016-3

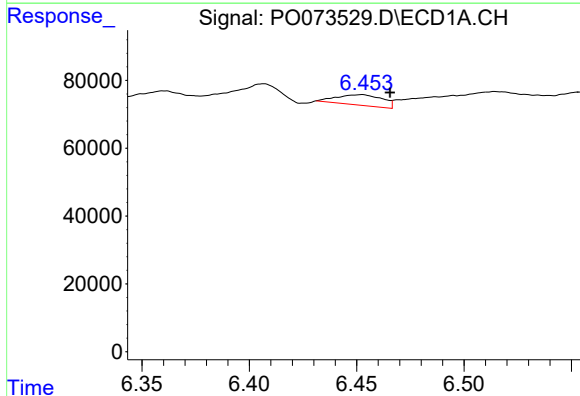
R.T.: 6.360 min
 Delta R.T.: 0.003 min
 Response: 22845
 Conc: 8.34 ng/ml

Instrument :
 ECD_O
 ClientSampled :



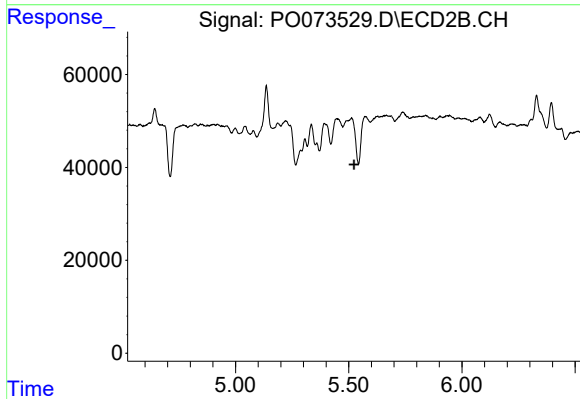
#5 AR-1016-3

R.T.: 0.000 min
 Exp R.T. : 5.471 min
 Response: 0
 Conc: N.D.



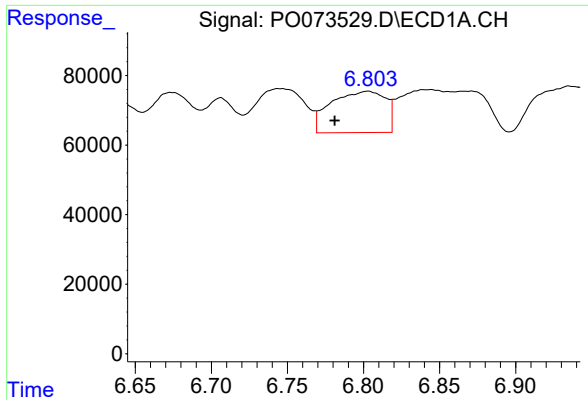
#6 AR-1016-4

R.T.: 6.452 min
 Delta R.T.: -0.013 min
 Response: 45927
 Conc: 20.12 ng/ml



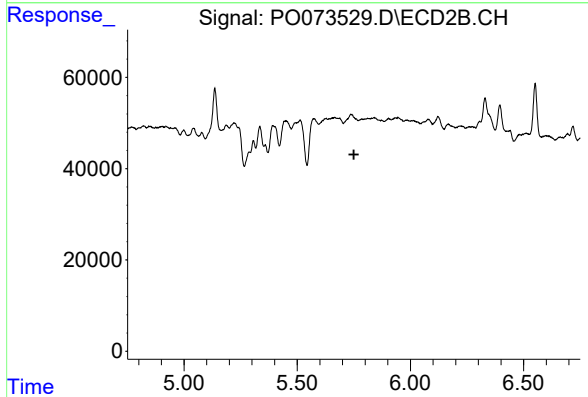
#6 AR-1016-4

R.T.: 0.000 min
 Exp R.T. : 5.523 min
 Response: 0
 Conc: N.D.

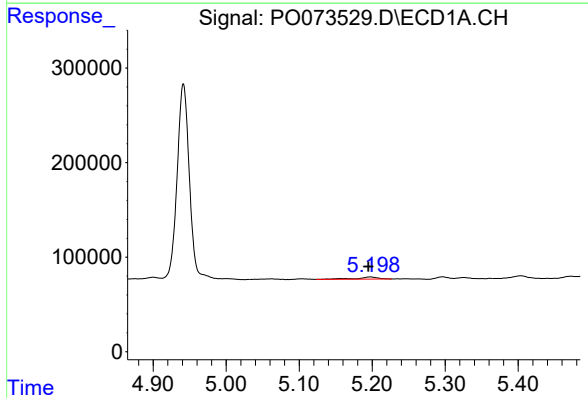


#7 AR-1016-5
 R.T.: 6.803 min
 Delta R.T.: 0.022 min
 Response: 297457
 Conc: 132.30 ng/ml

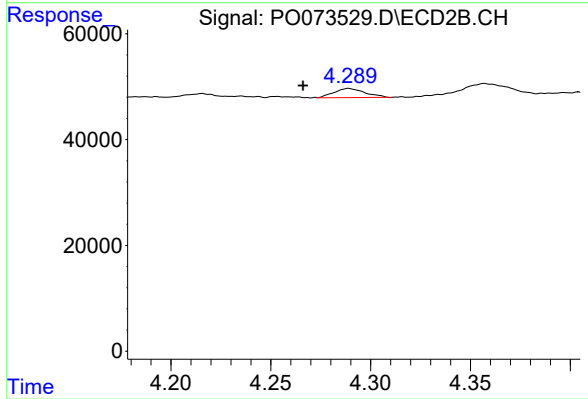
Instrument :
 ECD_O
 ClientSampleId :



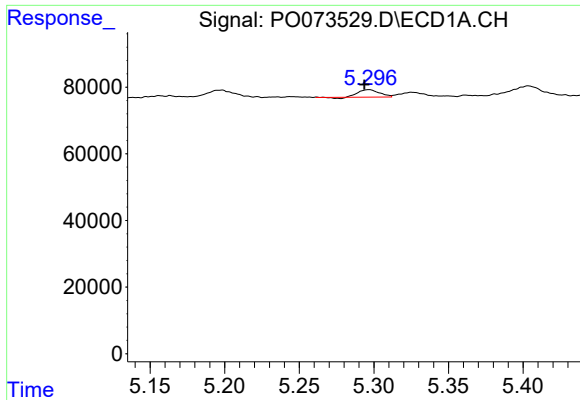
#7 AR-1016-5
 R.T.: 0.000 min
 Exp R.T. : 5.750 min
 Response: 0
 Conc: N.D.



#8 AR-1221-1
 R.T.: 5.197 min
 Delta R.T.: 0.003 min
 Response: 44978
 Conc: 45.34 ng/ml

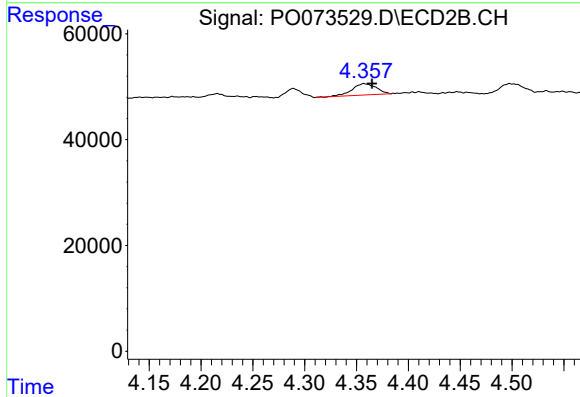


#8 AR-1221-1
 R.T.: 4.289 min
 Delta R.T.: 0.023 min
 Response: 18600
 Conc: 33.00 ng/ml

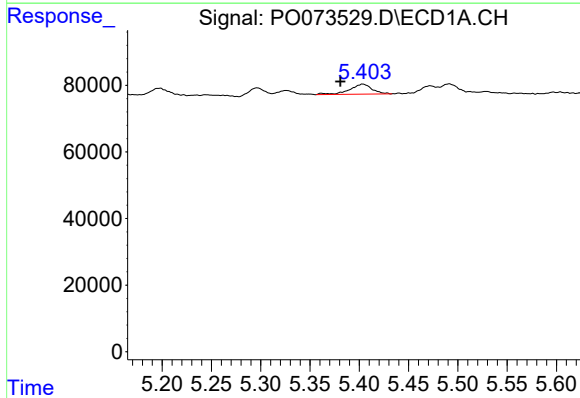


#9 AR-1221-2
 R.T.: 5.297 min
 Delta R.T.: 0.003 min
 Response: 20864
 Conc: 29.66 ng/ml

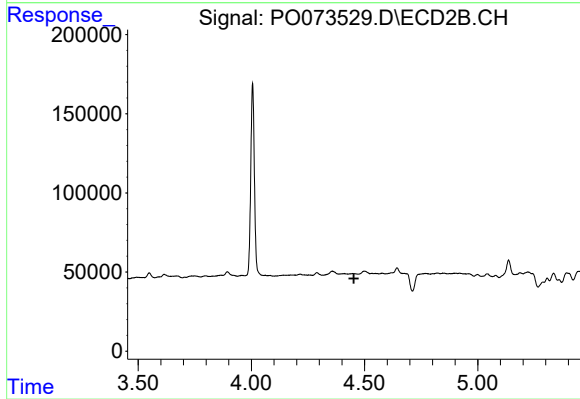
Instrument :
 ECD_O
 ClientSampleId :



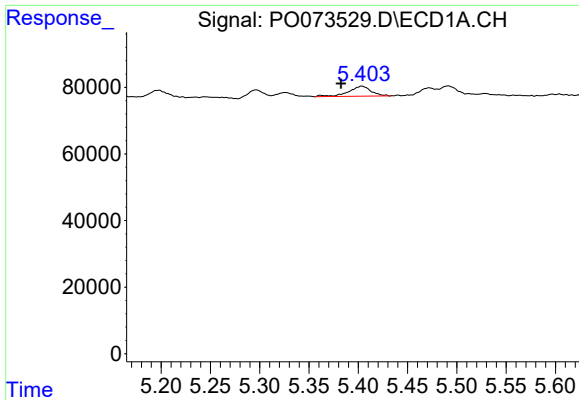
#9 AR-1221-2
 R.T.: 4.357 min
 Delta R.T.: -0.008 min
 Response: 35301
 Conc: 87.33 ng/ml



#10 AR-1221-3
 R.T.: 5.404 min
 Delta R.T.: 0.023 min
 Response: 47809
 Conc: 21.32 ng/ml



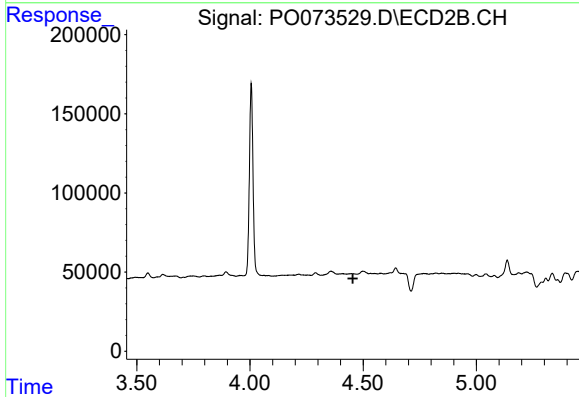
#10 AR-1221-3
 R.T.: 0.000 min
 Exp R.T. : 4.453 min
 Response: 0
 Conc: N.D.



#11 AR-1232-1

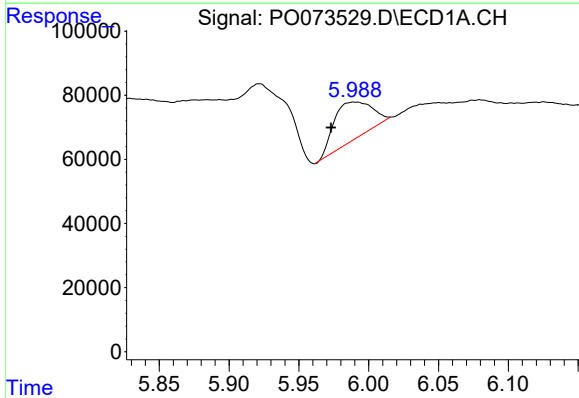
R.T.: 5.404 min
 Delta R.T.: 0.021 min
 Response: 47809
 Conc: 25.91 ng/ml

Instrument :
 ECD_O
 ClientSampled :



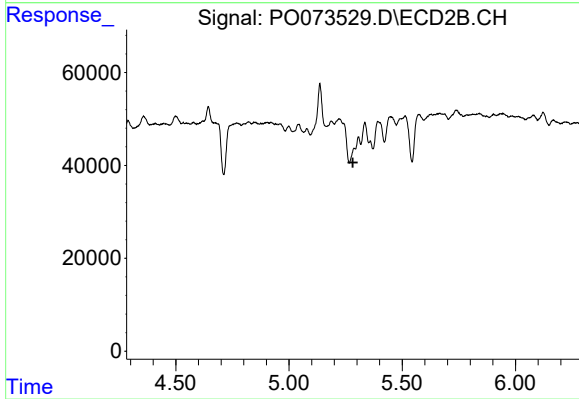
#11 AR-1232-1

R.T.: 0.000 min
 Exp R.T. : 4.454 min
 Response: 0
 Conc: N.D.



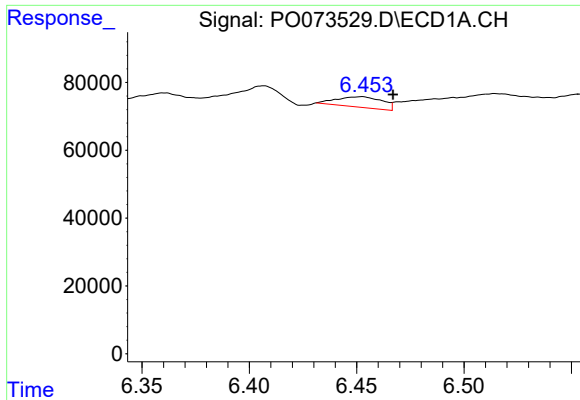
#12 AR-1232-2

R.T.: 5.990 min
 Delta R.T.: 0.017 min
 Response: 221295
 Conc: 232.54 ng/ml



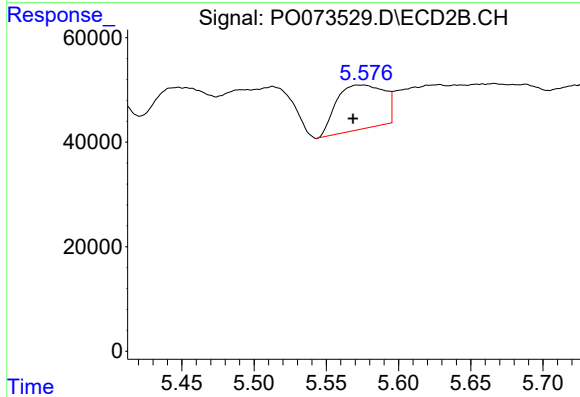
#12 AR-1232-2

R.T.: 5.288 min
 Delta R.T.: 0.006 min
 Response: -52874
 Conc: N.D.

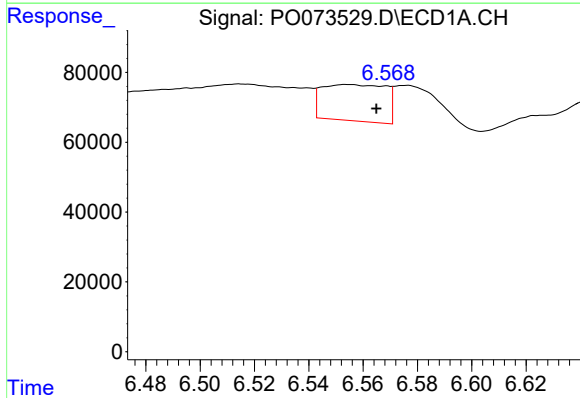


#14 AR-1232-4
 R.T.: 6.452 min
 Delta R.T.: -0.015 min
 Response: 45927
 Conc: 46.45 ng/ml

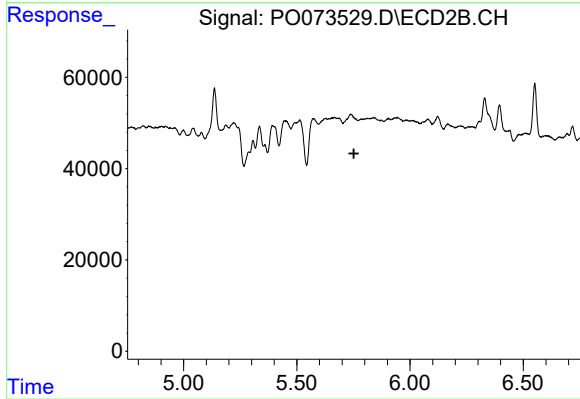
Instrument :
 ECD_O
 ClientSampled :



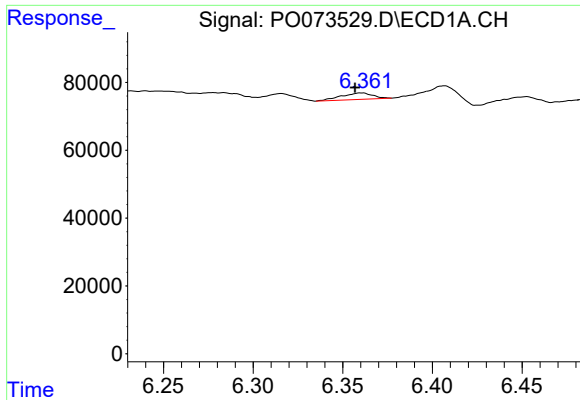
#14 AR-1232-4
 R.T.: 5.574 min
 Delta R.T.: 0.006 min
 Response: 194054
 Conc: 359.94 ng/ml



#15 AR-1232-5
 R.T.: 6.554 min
 Delta R.T.: -0.011 min
 Response: 169217
 Conc: 251.34 ng/ml



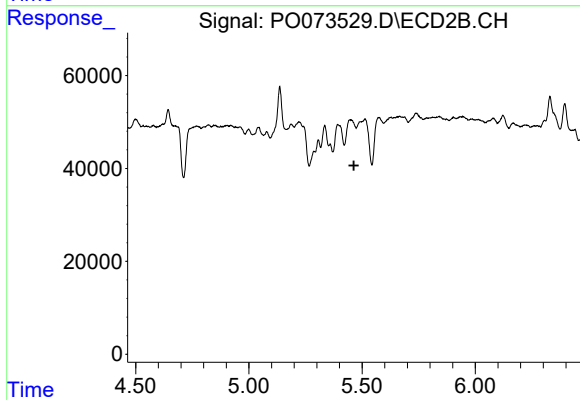
#15 AR-1232-5
 R.T.: 0.000 min
 Exp R.T. : 5.752 min
 Response: 0
 Conc: N.D.



#18 AR-1242-3

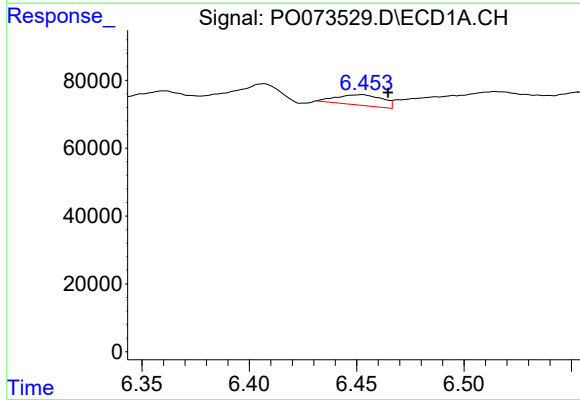
R.T.: 6.360 min
 Delta R.T.: 0.003 min
 Response: 22845
 Conc: 10.36 ng/ml

Instrument :
 ECD_O
 ClientSampled :



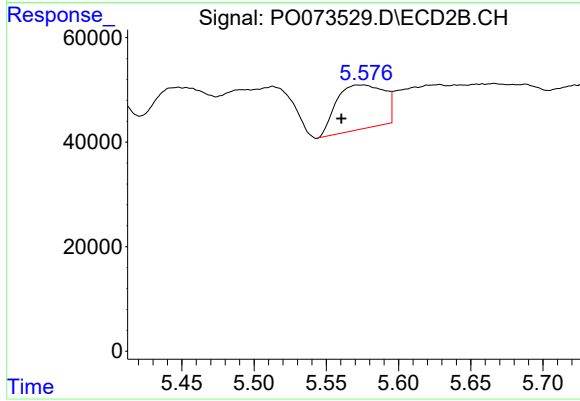
#18 AR-1242-3

R.T.: 0.000 min
 Exp R.T. : 5.464 min
 Response: 0
 Conc: N.D.



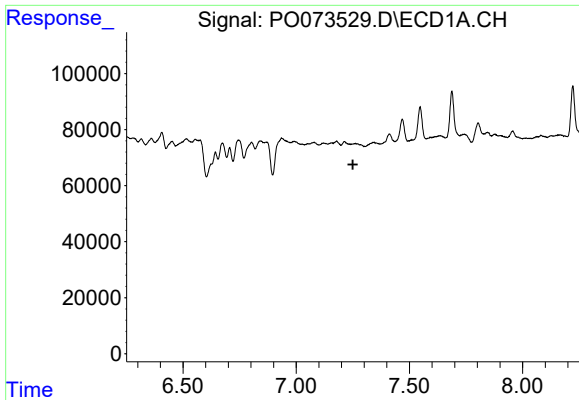
#19 AR-1242-4

R.T.: 6.452 min
 Delta R.T.: -0.012 min
 Response: 45927
 Conc: 24.74 ng/ml



#19 AR-1242-4

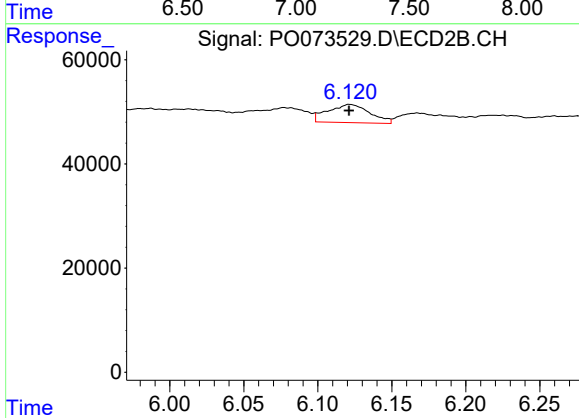
R.T.: 5.574 min
 Delta R.T.: 0.014 min
 Response: 194054
 Conc: 176.56 ng/ml



#20 AR-1242-5

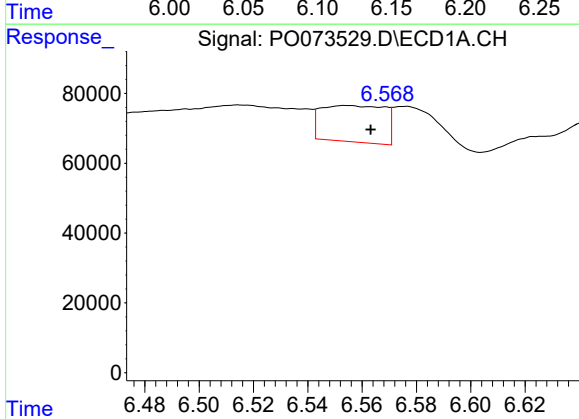
R.T.: 0.000 min
 Exp R.T.: 7.250 min
 Response: 0
 Conc: N.D.

Instrument :
 ECD_O
 ClientSampleId :



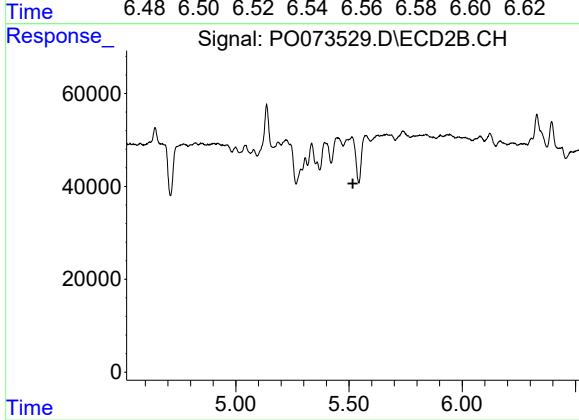
#20 AR-1242-5

R.T.: 6.122 min
 Delta R.T.: 0.000 min
 Response: 68856
 Conc: 44.47 ng/ml



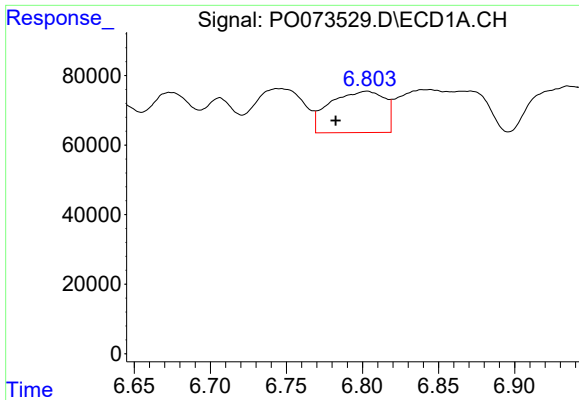
#22 AR-1248-2

R.T.: 6.554 min
 Delta R.T.: -0.009 min
 Response: 169217
 Conc: 65.46 ng/ml



#22 AR-1248-2

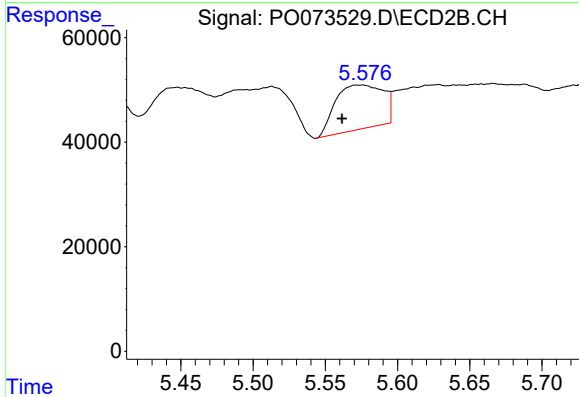
R.T.: 0.000 min
 Exp R.T.: 5.517 min
 Response: 0
 Conc: N.D.



#23 AR-1248-3

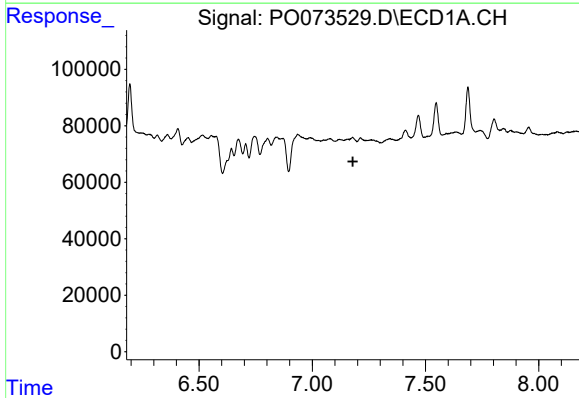
R.T.: 6.803 min
 Delta R.T.: 0.020 min
 Response: 297457
 Conc: 97.06 ng/ml

Instrument :
 ECD_O
 ClientSampleId :



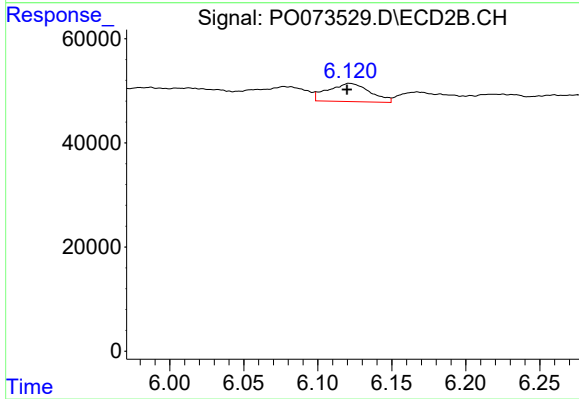
#23 AR-1248-3

R.T.: 5.574 min
 Delta R.T.: 0.012 min
 Response: 194054
 Conc: 113.72 ng/ml



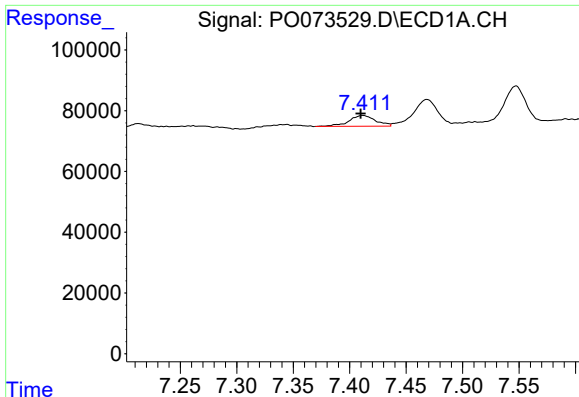
#26 AR-1254-1

R.T.: 0.000 min
 Exp R.T. : 7.179 min
 Response: 0
 Conc: N.D.



#26 AR-1254-1

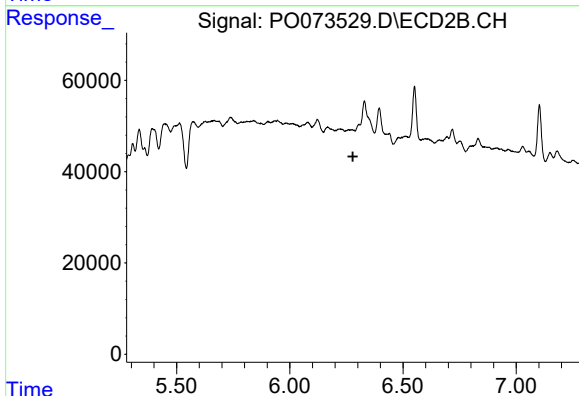
R.T.: 6.122 min
 Delta R.T.: 0.002 min
 Response: 68856
 Conc: 22.11 ng/ml



#27 AR-1254-2

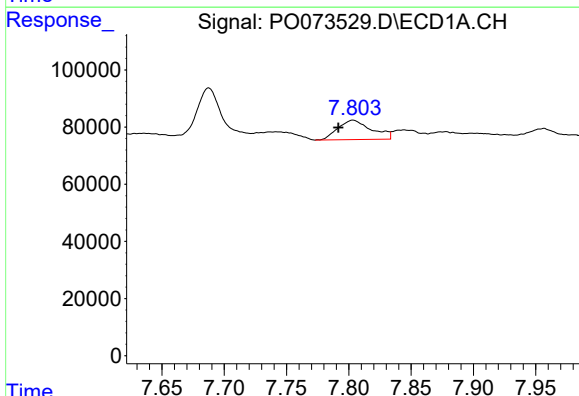
R.T.: 7.412 min
 Delta R.T.: 0.002 min
 Response: 58742
 Conc: 10.78 ng/ml

Instrument :
 ECD_O
 ClientSampleId :



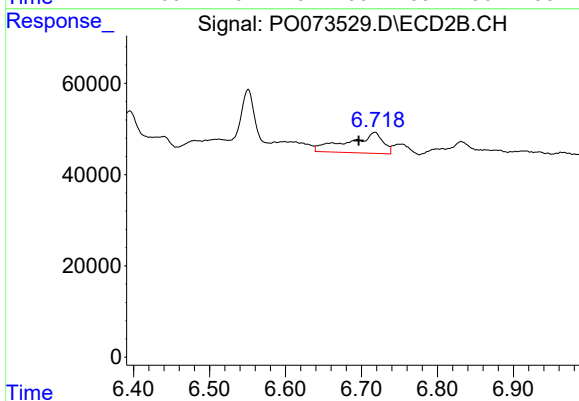
#27 AR-1254-2

R.T.: 0.000 min
 Exp R.T. : 6.279 min
 Response: 0
 Conc: N.D.



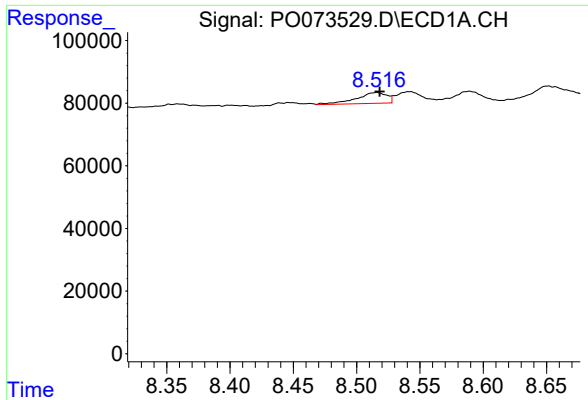
#28 AR-1254-3

R.T.: 7.803 min
 Delta R.T.: 0.012 min
 Response: 126913
 Conc: 22.39 ng/ml



#28 AR-1254-3

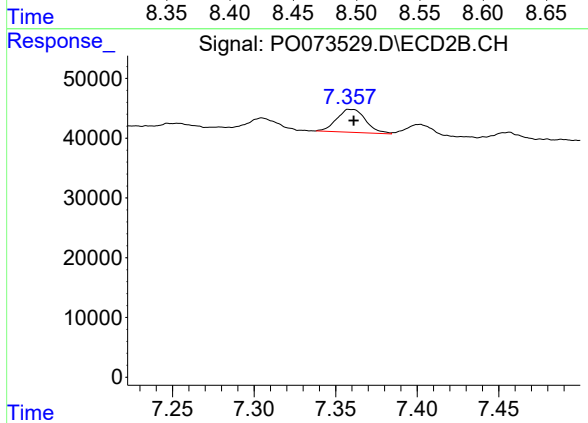
R.T.: 6.717 min
 Delta R.T.: 0.021 min
 Response: 146430
 Conc: 34.62 ng/ml



#30 AR-1254-5

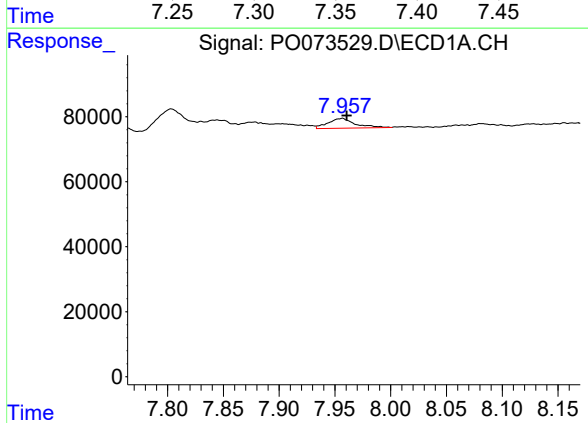
R.T.: 8.516 min
 Delta R.T.: -0.002 min
 Response: 58932
 Conc: 12.38 ng/ml

Instrument :
 ECD_O
 ClientSampleId :



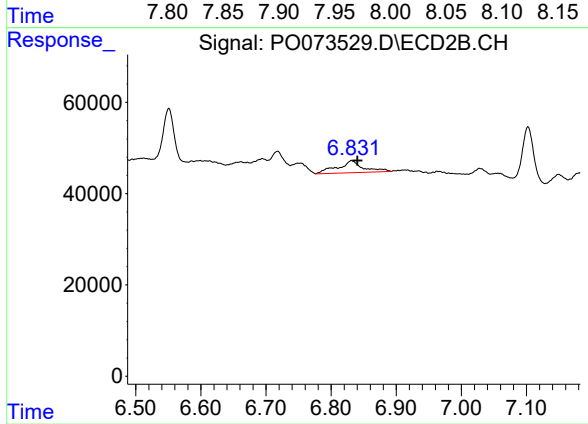
#30 AR-1254-5

R.T.: 7.360 min
 Delta R.T.: -0.001 min
 Response: 47454
 Conc: 12.85 ng/ml



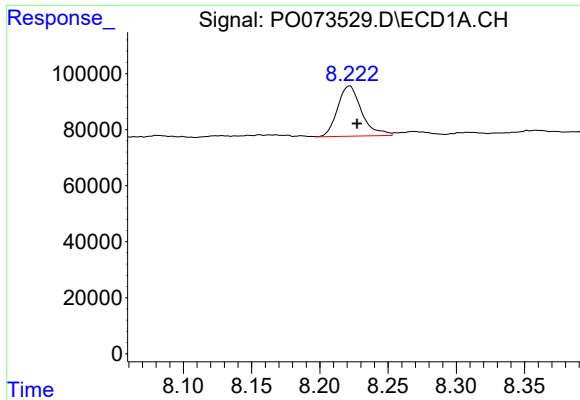
#31 AR-1260-1

R.T.: 7.956 min
 Delta R.T.: -0.004 min
 Response: 52019
 Conc: 12.89 ng/ml



#31 AR-1260-1

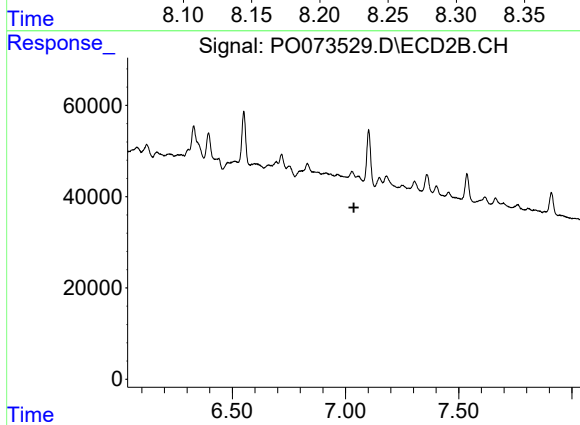
R.T.: 6.832 min
 Delta R.T.: -0.009 min
 Response: 70970
 Conc: 26.41 ng/ml



#32 AR-1260-2

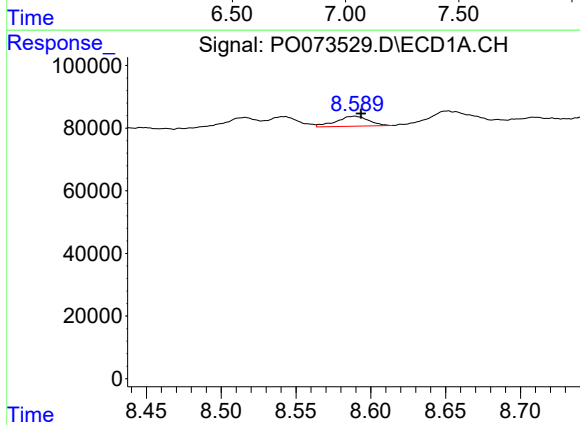
R.T.: 8.222 min
Delta R.T.: -0.006 min
Response: 219222
Conc: 39.89 ng/ml

Instrument :
ECD_O
ClientSampleId :



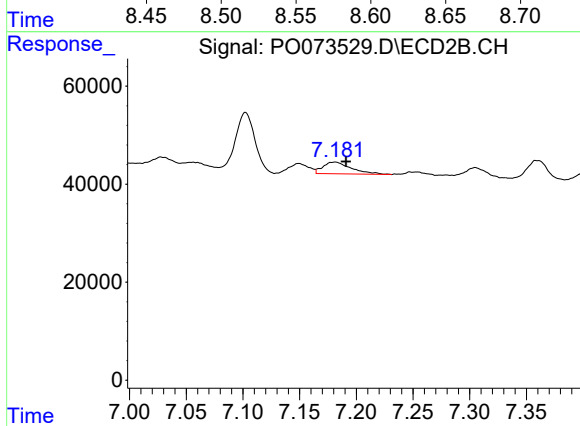
#32 AR-1260-2

R.T.: 0.000 min
Exp R.T. : 7.037 min
Response: 0
Conc: N.D.



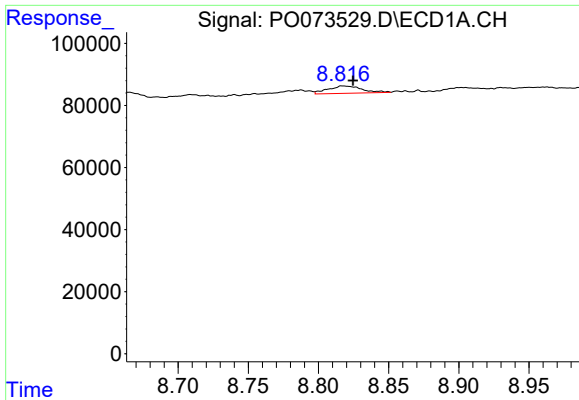
#33 AR-1260-3

R.T.: 8.589 min
Delta R.T.: -0.004 min
Response: 47898
Conc: 10.79 ng/ml



#33 AR-1260-3

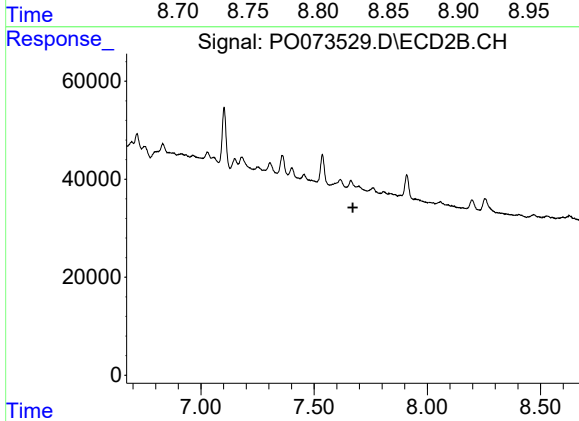
R.T.: 7.181 min
Delta R.T.: -0.010 min
Response: 41847
Conc: 13.55 ng/ml



#34 AR-1260-4

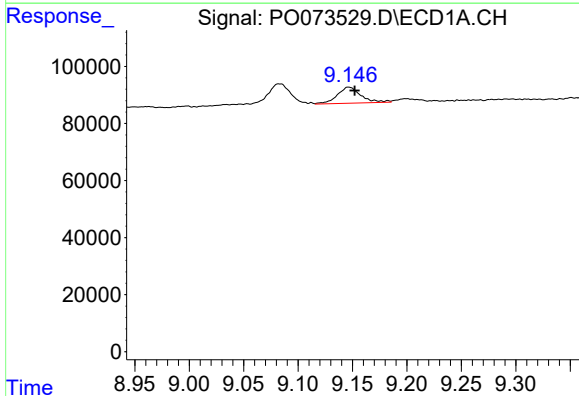
R.T.: 8.818 min
 Delta R.T.: -0.007 min
 Response: 40452
 Conc: 9.37 ng/ml

Instrument :
 ECD_O
 ClientSampleId :



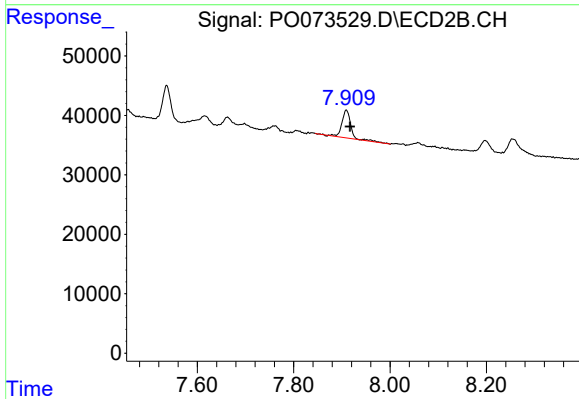
#34 AR-1260-4

R.T.: 0.000 min
 Exp R.T. : 7.671 min
 Response: 0
 Conc: N.D.



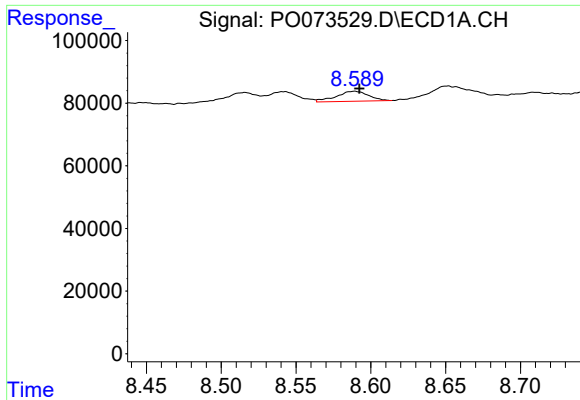
#35 AR-1260-5

R.T.: 9.147 min
 Delta R.T.: -0.005 min
 Response: 84678
 Conc: 8.58 ng/ml



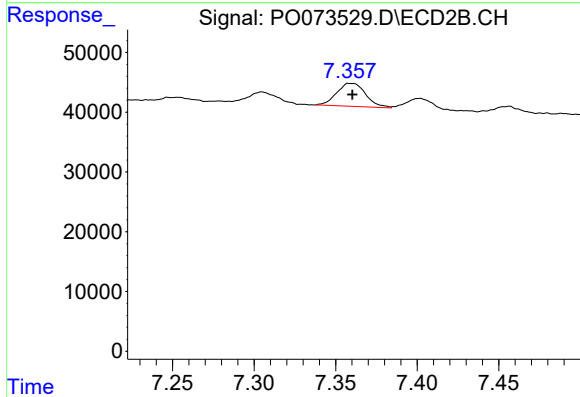
#35 AR-1260-5

R.T.: 7.909 min
 Delta R.T.: -0.008 min
 Response: 61202
 Conc: 9.88 ng/ml

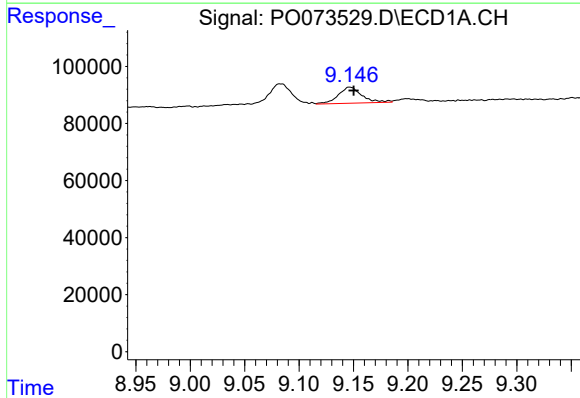


#36 AR-1262-1
 R.T.: 8.589 min
 Delta R.T.: -0.003 min
 Response: 47898
 Conc: 7.67 ng/ml

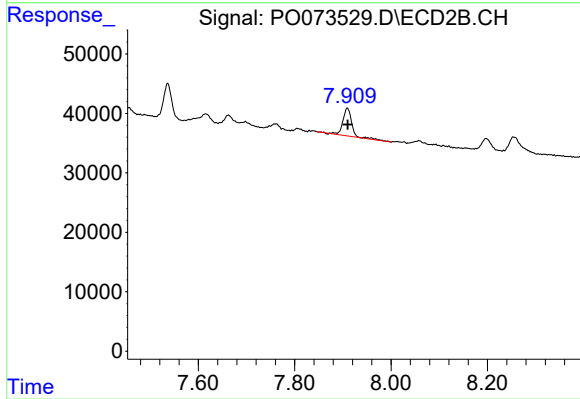
Instrument :
 ECD_O
 ClientSampleId :



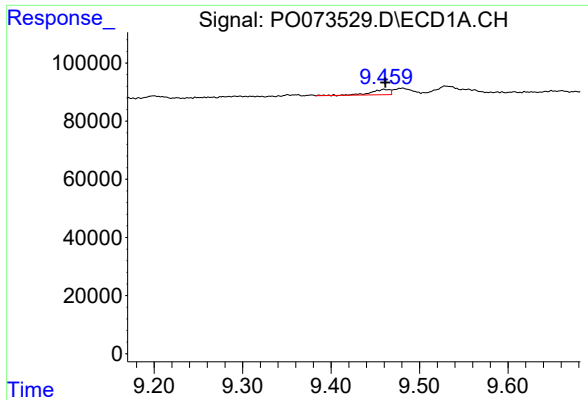
#36 AR-1262-1
 R.T.: 7.360 min
 Delta R.T.: 0.000 min
 Response: 47454
 Conc: 24.49 ng/ml



#37 AR-1262-2
 R.T.: 9.147 min
 Delta R.T.: -0.003 min
 Response: 84678
 Conc: 7.83 ng/ml



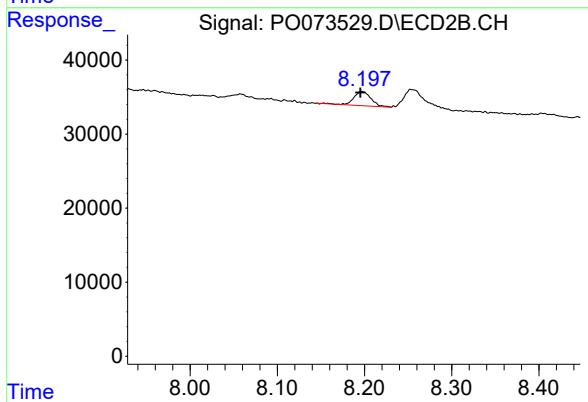
#37 AR-1262-2
 R.T.: 7.909 min
 Delta R.T.: 0.000 min
 Response: 61202
 Conc: 9.33 ng/ml



#38 AR-1262-3

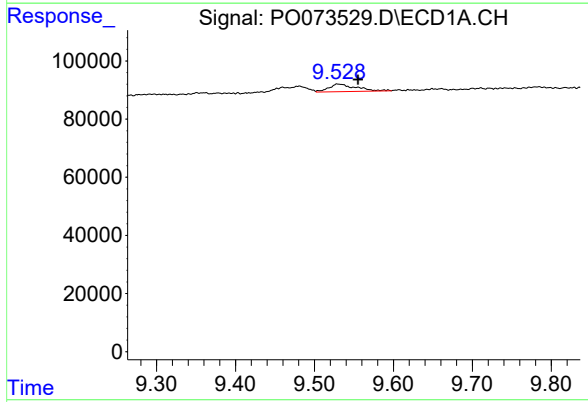
R.T.: 9.460 min
 Delta R.T.: -0.002 min
 Response: 28365
 Conc: 3.86 ng/ml

Instrument :
 ECD_O
 ClientSampled :



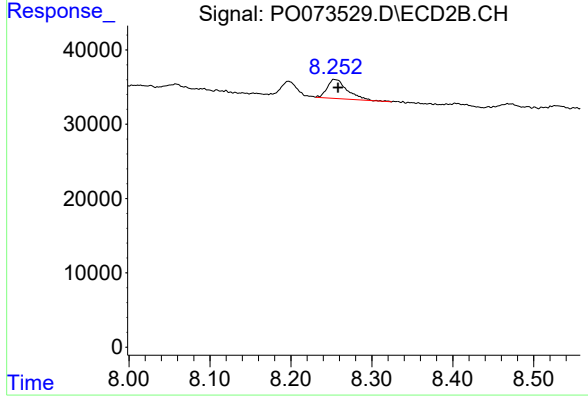
#38 AR-1262-3

R.T.: 8.197 min
 Delta R.T.: 0.002 min
 Response: 26661
 Conc: 9.88 ng/ml



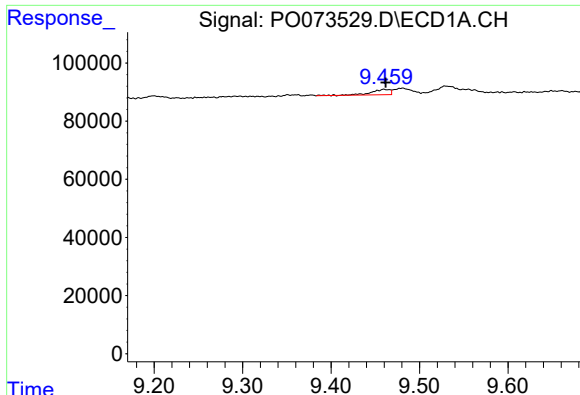
#39 AR-1262-4

R.T.: 9.529 min
 Delta R.T.: -0.026 min
 Response: 62910
 Conc: 11.43 ng/ml



#39 AR-1262-4

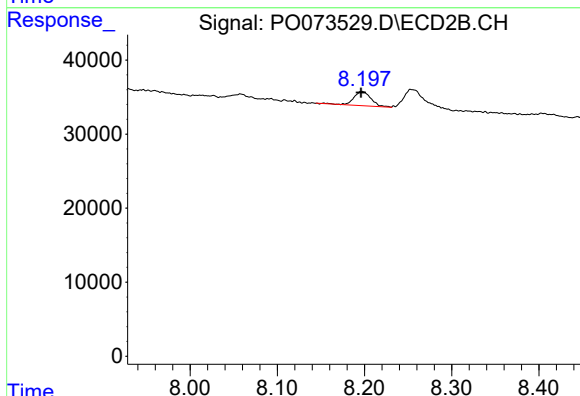
R.T.: 8.255 min
 Delta R.T.: -0.003 min
 Response: 44934
 Conc: 9.41 ng/ml



#41 AR-1268-1

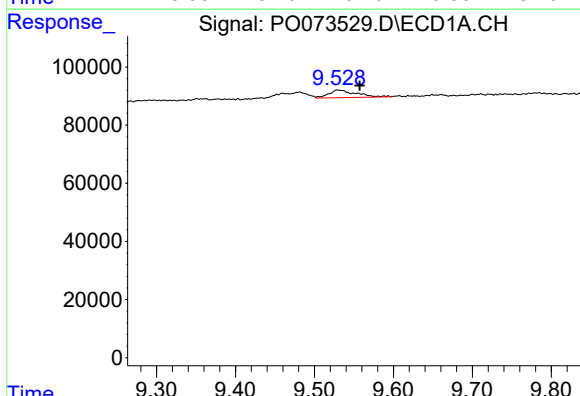
R.T.: 9.460 min
 Delta R.T.: -0.002 min
 Response: 28365
 Conc: 2.03 ng/ml

Instrument :
 ECD_O
 ClientSampleId :



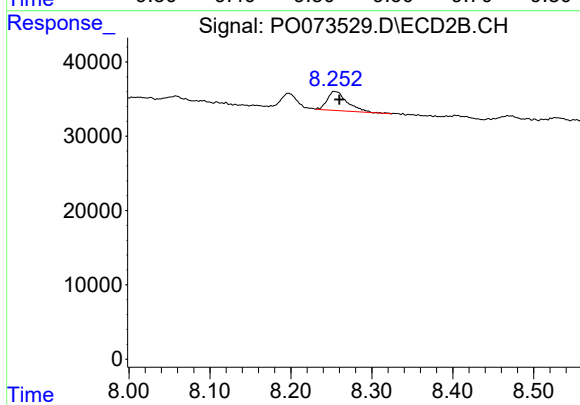
#41 AR-1268-1

R.T.: 8.197 min
 Delta R.T.: 0.002 min
 Response: 26661
 Conc: 3.27 ng/ml



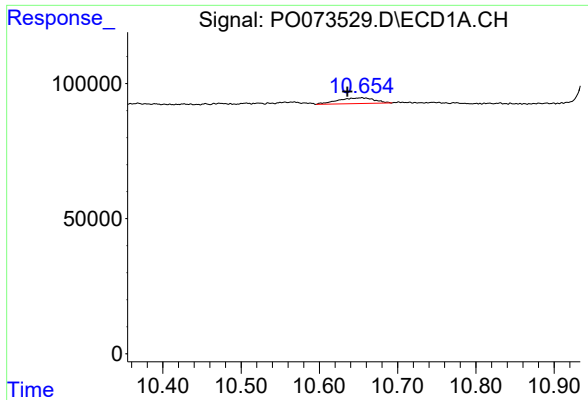
#42 AR-1268-2

R.T.: 9.529 min
 Delta R.T.: -0.028 min
 Response: 62910
 Conc: 5.18 ng/ml



#42 AR-1268-2

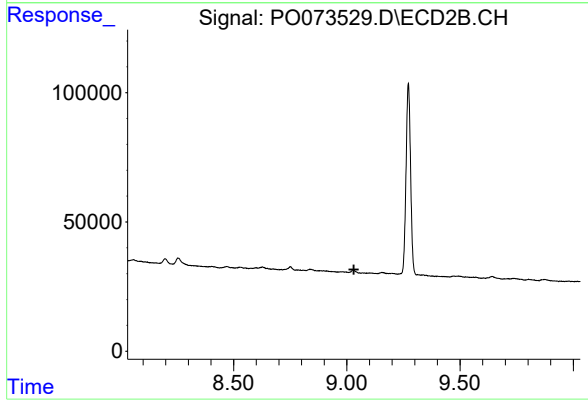
R.T.: 8.255 min
 Delta R.T.: -0.005 min
 Response: 44934
 Conc: 6.15 ng/ml



#45 AR-1268-5

R.T.: 10.654 min
Delta R.T.: 0.018 min
Response: 69338
Conc: 2.18 ng/ml

Instrument :
ECD_O
ClientSampleId :



#45 AR-1268-5

R.T.: 0.000 min
Exp R.T. : 9.031 min
Response: 0
Conc: N.D.