

Data Path : Z:\pestpcbsrv\HPCHEM1\ECD\_0\Data\PO112420\  
 Data File : PO073530.D  
 Signal(s) : Signal #1: ECD1A.CH Signal #2: ECD2B.CH  
 Acq On : 24 Nov 2020 19:29  
 Operator : DD\AJ  
 Sample : L4871-01  
 Misc :  
 ALS Vial : 27 Sample Multiplier: 1

Instrument :  
 ECD\_0  
 ClientSampled :

Integration File signal 1: autoint1.e  
 Integration File signal 2: autoint2.e  
 Quant Time: Nov 25 10:37:42 2020  
 Quant Method : Z:\pestpcbsrv\HPCHEM1\ECD\_0\methods\PO112320.M  
 Quant Title : GC EXTRACTABLES  
 QLast Update : Wed Nov 25 10:04:26 2020  
 Response via : Initial Calibration  
 Integrator: ChemStation 6890 Scale Mode: Small noise peaks clipped

Volume Inj. : 2 µl  
 Signal #1 Phase : ZB-MR1 Signal #2 Phase: ZB-MR2  
 Signal #1 Info : 30Mx0.32mmx 0.50µ Signal #2 Info : 30M x 0.32mm x 0.25µm

Compound	RT#1	RT#2	Resp#1	Resp#2	ng/ml	ng/ml
System Monitoring Compounds						
1) SA Tetrachlo...	4.954	4.026	1096900	1089810	13.113	22.228 #
2) SA Decachlor...	10.963	9.271	1608447	895503	19.508	19.531
Target Compounds						
3) L1 AR-1016-1	6.270	0.000	52201	0	15.852	N.D. #
4) L1 AR-1016-2	6.300	5.300f	242752	222755	52.732	79.648 #
5) L1 AR-1016-3	6.357	5.500f	292416	-33534	106.790	N.D. #
6) L1 AR-1016-4	6.488f	5.500f	262135	-33534	114.849	N.D. #
7) L1 AR-1016-5	6.799f	0.000	148665	0	66.122	N.D. #
8) L2 AR-1221-1	5.207	0.000	98304	0	99.102	N.D. #
9) L2 AR-1221-2	5.306	4.366	198274	99817	281.910	246.929
10) L2 AR-1221-3	5.381	0.000	41708	0	18.602	N.D. #
11) L3 AR-1232-1	5.381	0.000	41708	0	22.600	N.D. #
12) L3 AR-1232-2	5.998f	5.300f	50879	222755	53.466	186.376 #
13) L3 AR-1232-3	6.300	5.500f	242752	-33534	124.098	N.D. #
14) L3 AR-1232-4	6.488f	5.550f	262135	235798	265.128	437.365 #
15) L3 AR-1232-5	6.566	0.000	265724	0	394.688	N.D. #
16) L4 AR-1242-1	6.270	0.000	52201	0	19.792	N.D. #
17) L4 AR-1242-2	6.300	5.300f	242752	222755	66.408	98.485 #
18) L4 AR-1242-3	6.357	0.000	292416	0	132.597	N.D. #
19) L4 AR-1242-4	6.488f	5.550	262135	235798	141.225	214.537 #
20) L4 AR-1242-5	7.259	6.114	40551	131537	19.279	84.952 #
21) L5 AR-1248-1	6.270	0.000	52201	0	26.112	N.D. #
22) L5 AR-1248-2	6.566	5.500f	265724	-33534	102.786	N.D. #
23) L5 AR-1248-3	6.799f	5.550	148665	235798	48.511	138.178 #
25) L5 AR-1248-5	7.259	6.165	40551	171714	11.333	77.330 #
26) L6 AR-1254-1	0.000	6.114	0	131537	N.D.	42.243 #
27) L6 AR-1254-2	7.394f	6.256f	80795	71991	14.830	26.370 #
28) L6 AR-1254-3	7.781	6.697	505916	131950	89.270	31.200 #
29) L6 AR-1254-4	0.000	6.946	0	49986	N.D.	17.314 #
30) L6 AR-1254-5	8.519	0.000	19331	0	4.061	N.D. #
31) L7 AR-1260-1	7.950	6.869f	63482	47331	15.732	17.616
32) L7 AR-1260-2	0.000	7.026	0	52074	N.D.	15.612 #
33) L7 AR-1260-3	8.594	0.000	18593	0	4.190	N.D. #
35) L7 AR-1260-5	0.000	7.911	0	46721	N.D.	7.542 #
36) L8 AR-1262-1	8.594	0.000	18593	0	2.978	N.D. #
37) L8 AR-1262-2	0.000	7.911	0	46721	N.D.	7.126 #
39) L8 AR-1262-4	9.529f	8.268	118921	42893	21.610	8.983 #
42) L9 AR-1268-2	9.529f	8.268	118921	42893	9.789	5.873 #
45) L9 AR-1268-5	10.654f	0.000	88767	0	2.789	N.D. #

(f)=RT Delta > 1/2 Window (#)=Amounts differ by > 25% (m)=manual int.

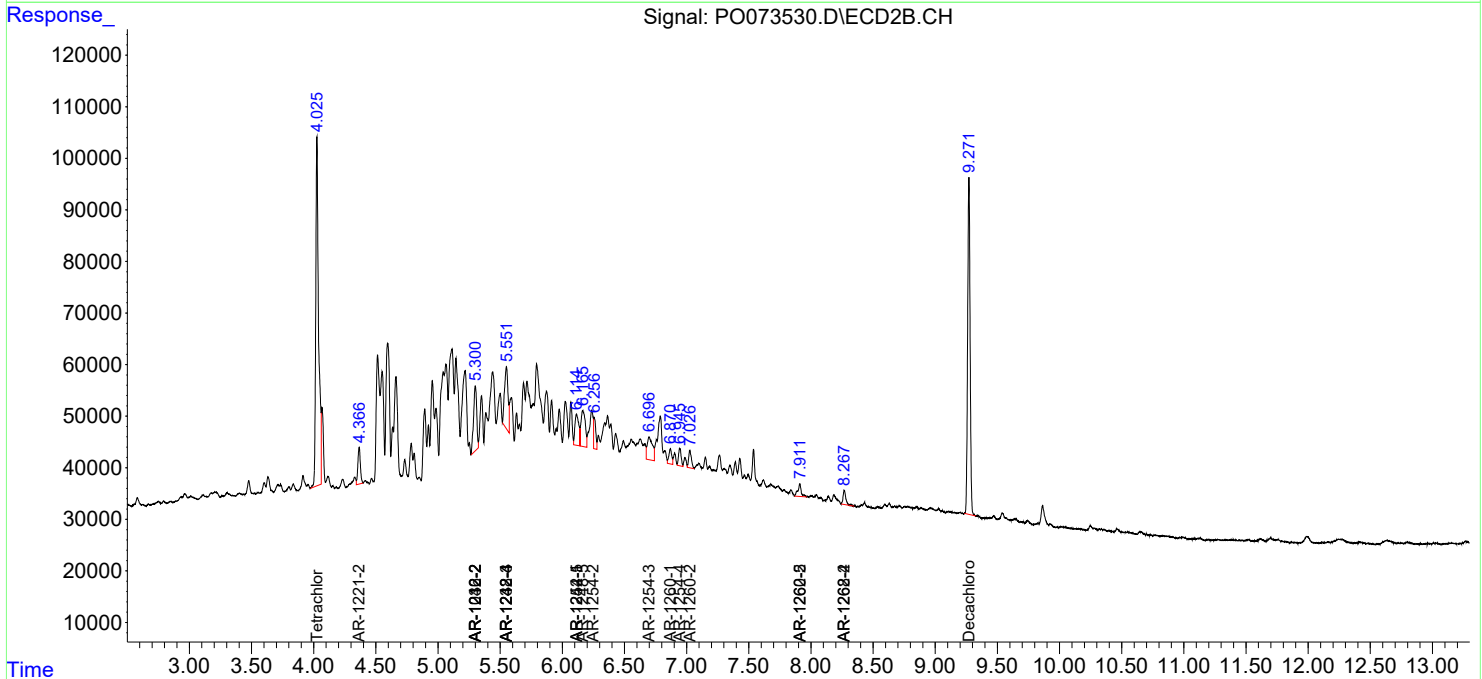
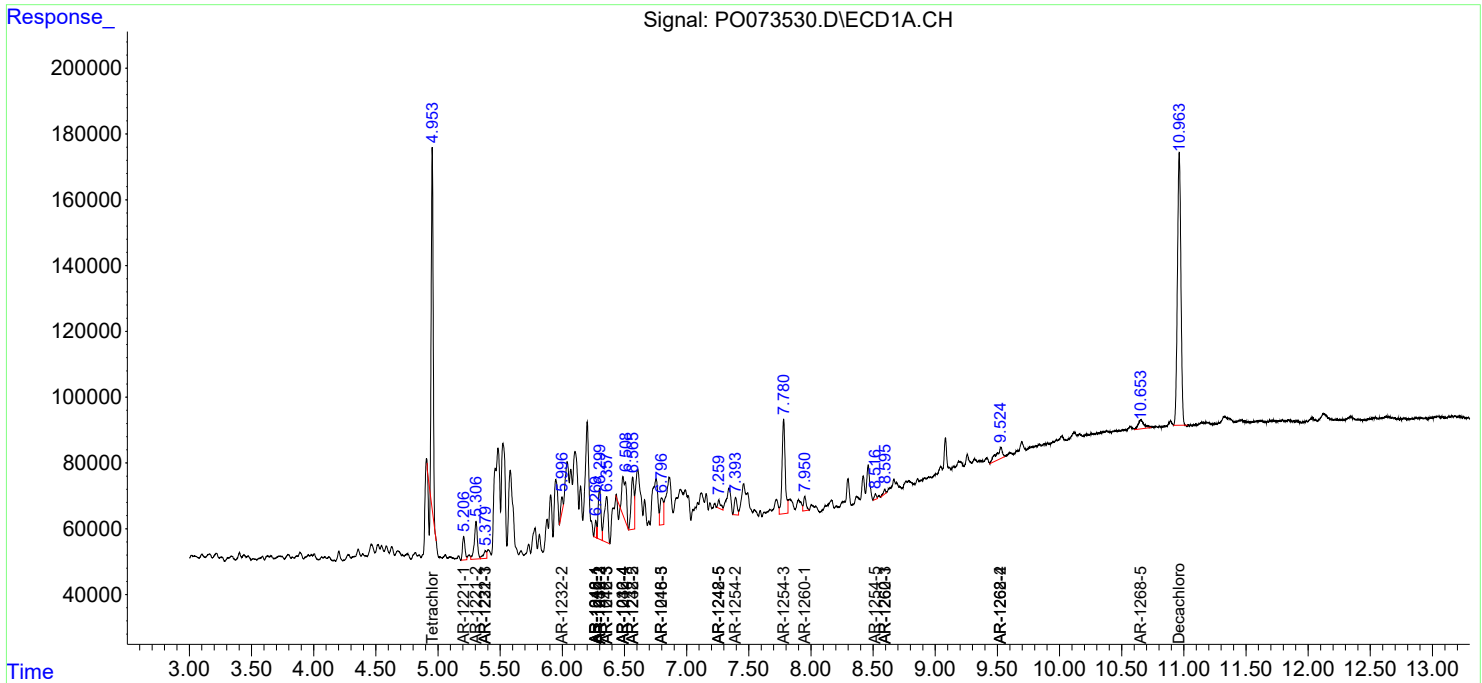
Instrument :  
ECD\_O  
ClientSampleId :

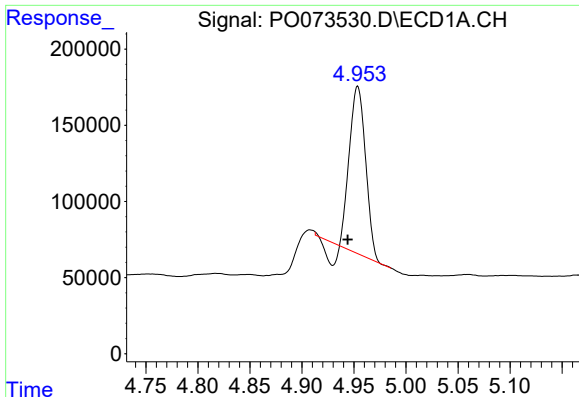
Data Path : Z:\pestpcbsrv\HPCHEM1\ECD\_0\Data\PO112420\  
 Data File : PO073530.D  
 Signal(s) : Signal #1: ECD1A.CH Signal #2: ECD2B.CH  
 Acq On : 24 Nov 2020 19:29  
 Operator : DD\AJ  
 Sample : L4871-01  
 Misc :  
 ALS Vial : 27 Sample Multiplier: 1

Instrument :  
 ECD\_O  
 ClientSampled :

Integration File signal 1: autoint1.e  
 Integration File signal 2: autoint2.e  
 Quant Time: Nov 25 10:37:42 2020  
 Quant Method : Z:\pestpcbsrv\HPCHEM1\ECD\_0\methods\PO112320.M  
 Quant Title : GC EXTRACTABLES  
 QLast Update : Wed Nov 25 10:04:26 2020  
 Response via : Initial Calibration  
 Integrator: ChemStation 6890 Scale Mode: Small noise peaks clipped

Volume Inj. : 2 µl  
 Signal #1 Phase : ZB-MR1 Signal #2 Phase: ZB-MR2  
 Signal #1 Info : 30Mx0.32mmx 0.50µ Signal #2 Info : 30M x 0.32mm x 0.25µm

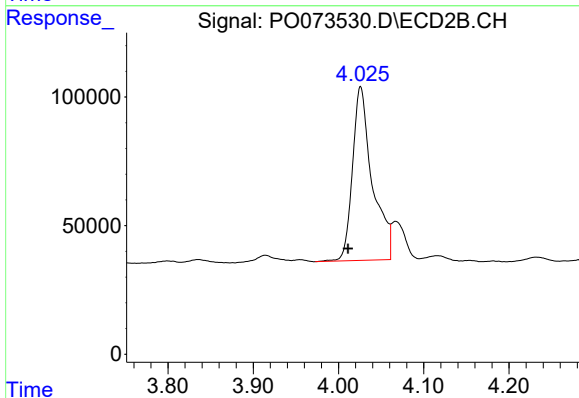




#1 Tetrachloro-m-xylene

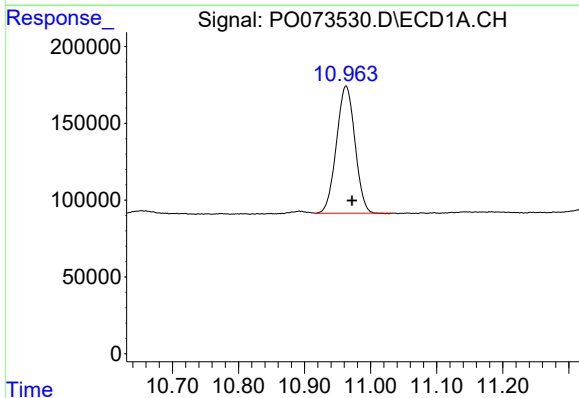
R.T.: 4.954 min  
 Delta R.T.: 0.010 min  
 Response: 1096900  
 Conc: 13.11 ng/ml

Instrument :  
 ECD\_O  
 ClientSampled :



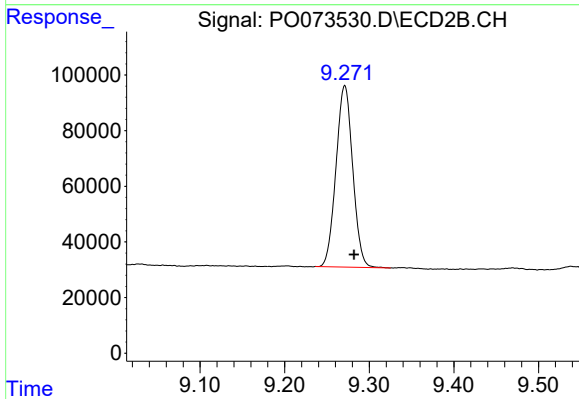
#1 Tetrachloro-m-xylene

R.T.: 4.026 min  
 Delta R.T.: 0.015 min  
 Response: 1089810  
 Conc: 22.23 ng/ml



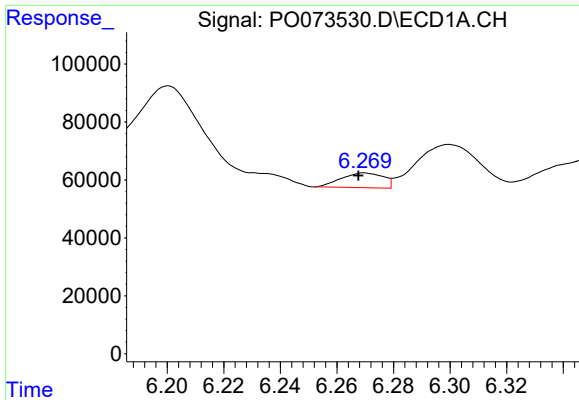
#2 Decachlorobiphenyl

R.T.: 10.963 min  
 Delta R.T.: -0.009 min  
 Response: 1608447  
 Conc: 19.51 ng/ml



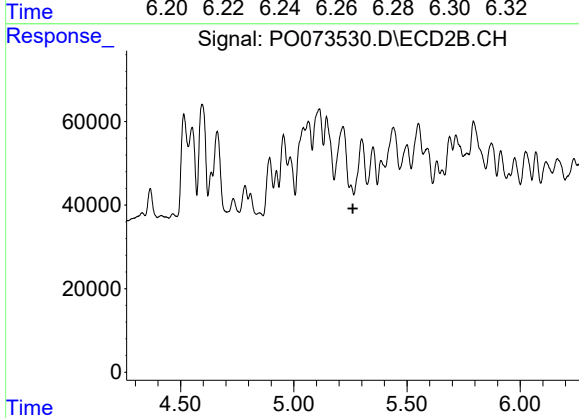
#2 Decachlorobiphenyl

R.T.: 9.271 min  
 Delta R.T.: -0.011 min  
 Response: 895503  
 Conc: 19.53 ng/ml

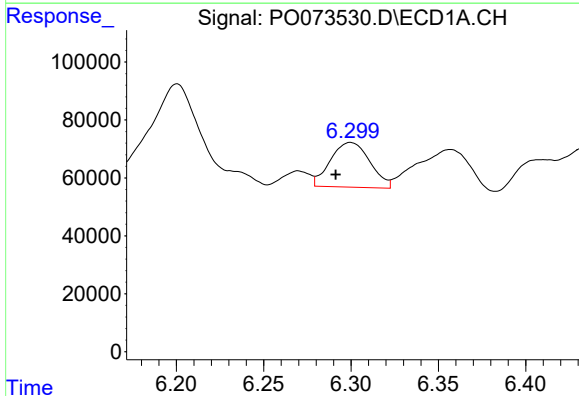


#3 AR-1016-1  
 R.T.: 6.270 min  
 Delta R.T.: 0.002 min  
 Response: 52201  
 Conc: 15.85 ng/ml

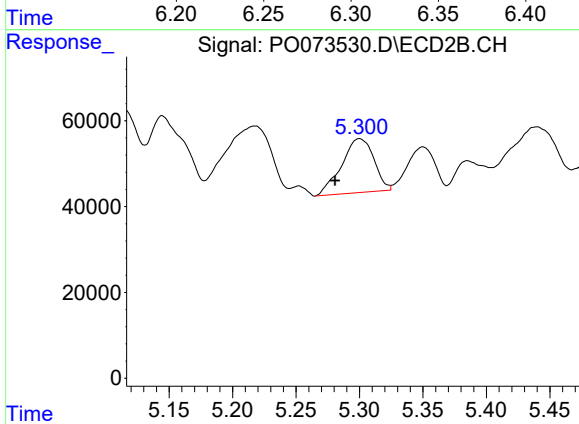
Instrument :  
 ECD\_O  
 ClientSampled :



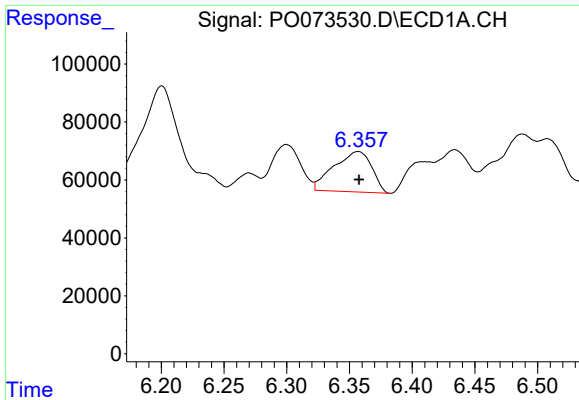
#3 AR-1016-1  
 R.T.: 0.000 min  
 Exp R.T. : 5.261 min  
 Response: 0  
 Conc: N.D.



#4 AR-1016-2  
 R.T.: 6.300 min  
 Delta R.T.: 0.009 min  
 Response: 242752  
 Conc: 52.73 ng/ml



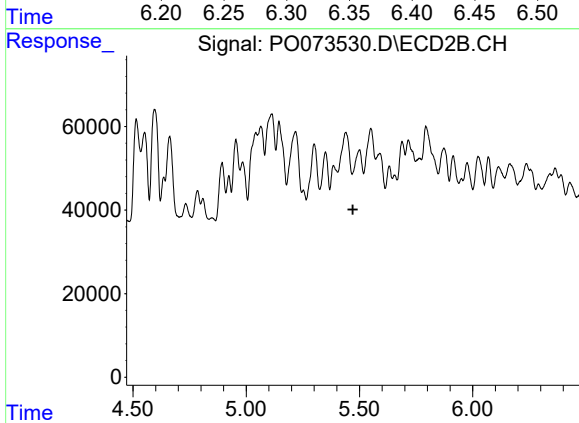
#4 AR-1016-2  
 R.T.: 5.300 min  
 Delta R.T.: 0.019 min  
 Response: 222755  
 Conc: 79.65 ng/ml



#5 AR-1016-3

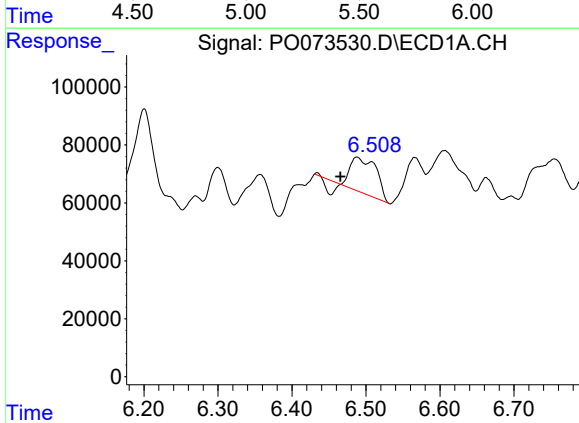
R.T.: 6.357 min  
 Delta R.T.: 0.000 min  
 Response: 292416  
 Conc: 106.79 ng/ml

Instrument :  
 ECD\_O  
 ClientSampleId :



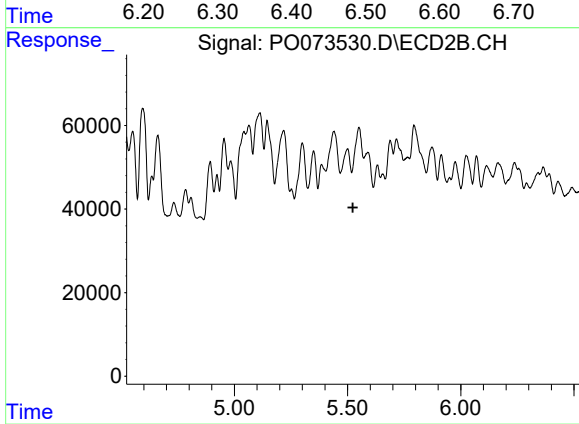
#5 AR-1016-3

R.T.: 5.500 min  
 Delta R.T.: 0.029 min  
 Response: -33534  
 Conc: N.D.



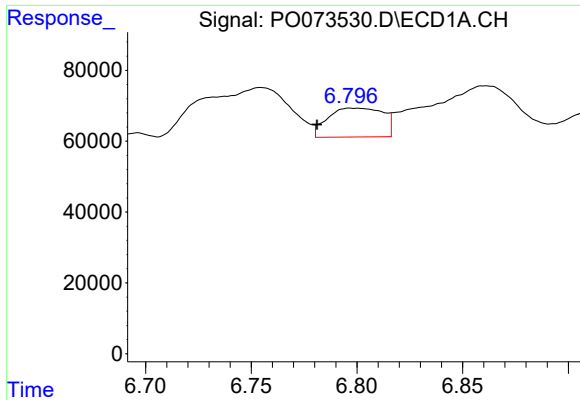
#6 AR-1016-4

R.T.: 6.488 min  
 Delta R.T.: 0.022 min  
 Response: 262135  
 Conc: 114.85 ng/ml



#6 AR-1016-4

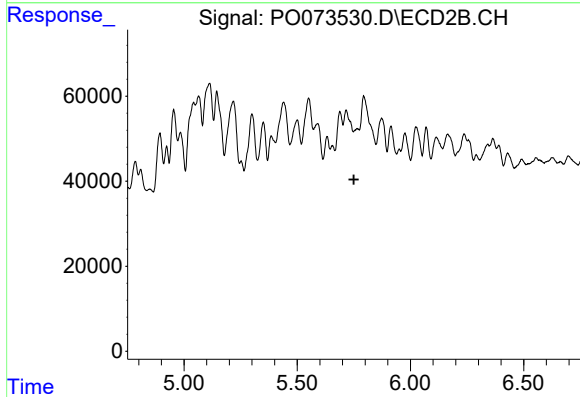
R.T.: 5.500 min  
 Delta R.T.: -0.023 min  
 Response: -33534  
 Conc: N.D.



#7 AR-1016-5

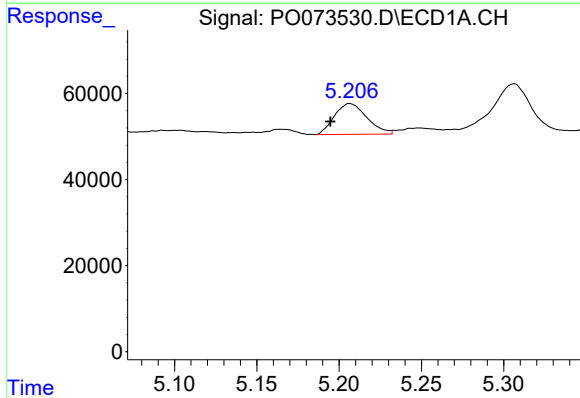
R.T.: 6.799 min  
 Delta R.T.: 0.018 min  
 Response: 148665  
 Conc: 66.12 ng/ml

Instrument :  
 ECD\_O  
 ClientSampleId :



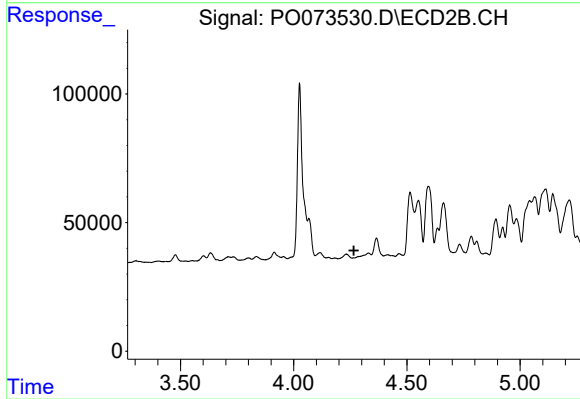
#7 AR-1016-5

R.T.: 0.000 min  
 Exp R.T. : 5.750 min  
 Response: 0  
 Conc: N.D.



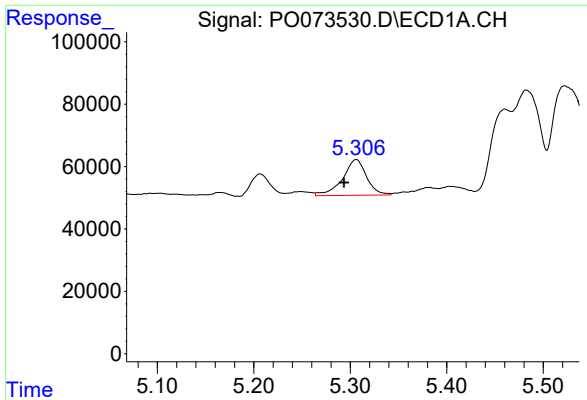
#8 AR-1221-1

R.T.: 5.207 min  
 Delta R.T.: 0.012 min  
 Response: 98304  
 Conc: 99.10 ng/ml



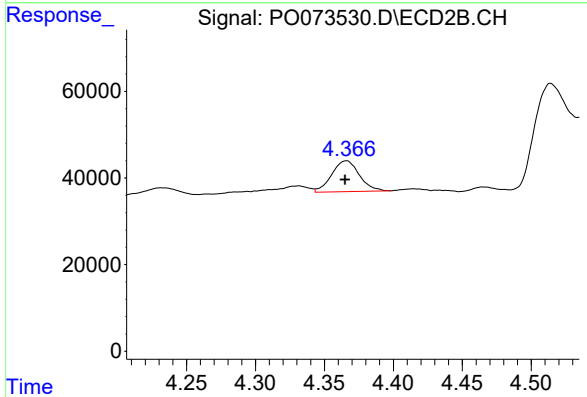
#8 AR-1221-1

R.T.: 0.000 min  
 Exp R.T. : 4.266 min  
 Response: 0  
 Conc: N.D.

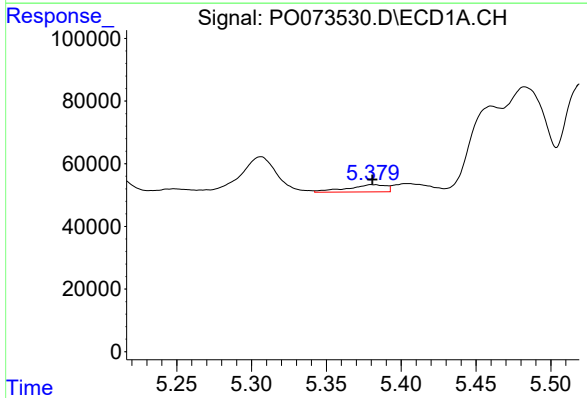


#9 AR-1221-2  
 R.T.: 5.306 min  
 Delta R.T.: 0.013 min  
 Response: 198274  
 Conc: 281.91 ng/ml

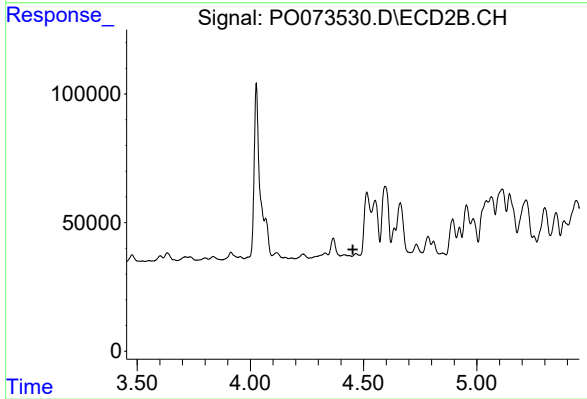
Instrument :  
 ECD\_O  
 ClientSampleId :



#9 AR-1221-2  
 R.T.: 4.366 min  
 Delta R.T.: 0.000 min  
 Response: 99817  
 Conc: 246.93 ng/ml

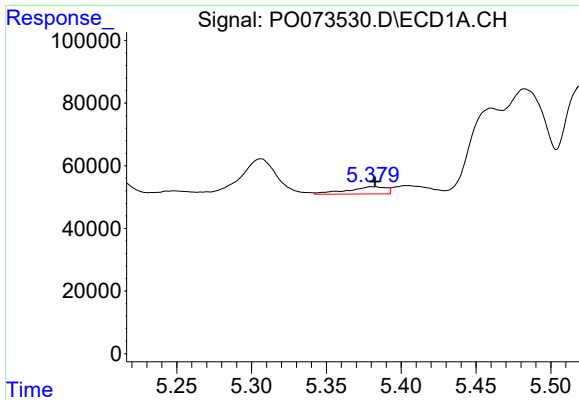


#10 AR-1221-3  
 R.T.: 5.381 min  
 Delta R.T.: 0.000 min  
 Response: 41708  
 Conc: 18.60 ng/ml



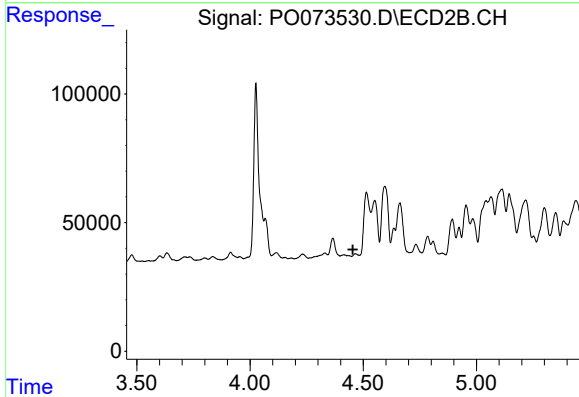
#10 AR-1221-3  
 R.T.: 0.000 min  
 Exp R.T. : 4.453 min  
 Response: 0  
 Conc: N.D.



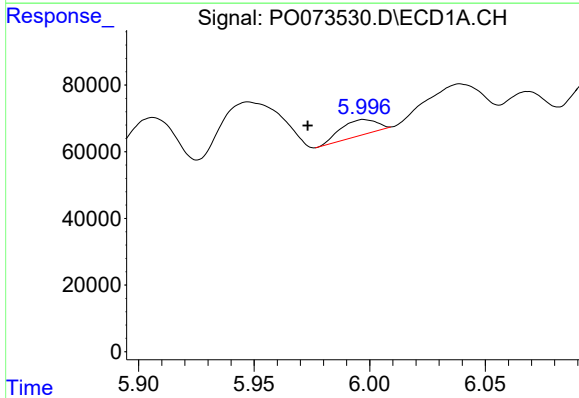


#11 AR-1232-1  
 R.T.: 5.381 min  
 Delta R.T.: -0.002 min  
 Response: 41708  
 Conc: 22.60 ng/ml

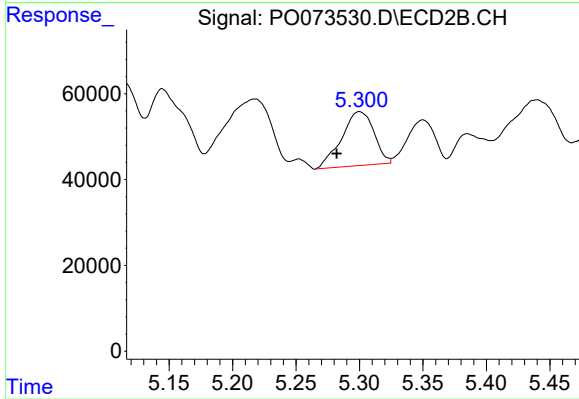
Instrument :  
 ECD\_O  
 ClientSampled :



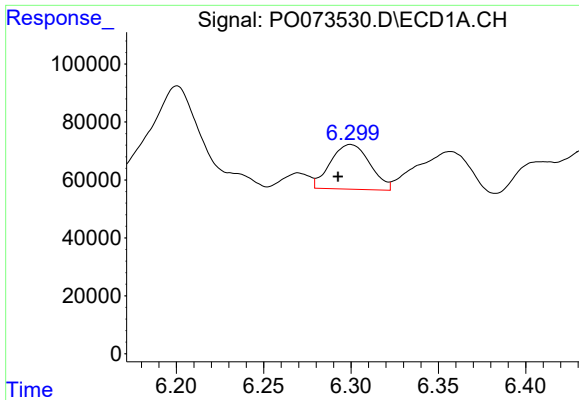
#11 AR-1232-1  
 R.T.: 0.000 min  
 Exp R.T. : 4.454 min  
 Response: 0  
 Conc: N.D.



#12 AR-1232-2  
 R.T.: 5.998 min  
 Delta R.T.: 0.024 min  
 Response: 50879  
 Conc: 53.47 ng/ml

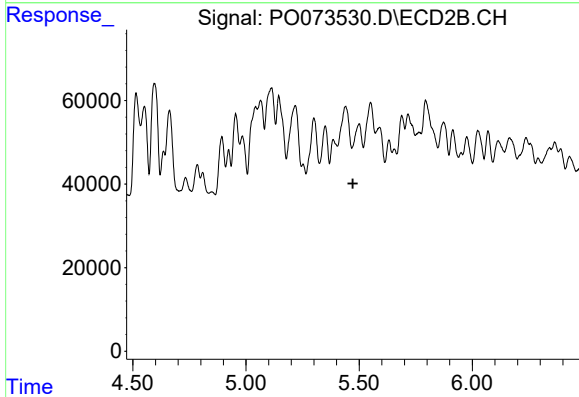


#12 AR-1232-2  
 R.T.: 5.300 min  
 Delta R.T.: 0.018 min  
 Response: 222755  
 Conc: 186.38 ng/ml

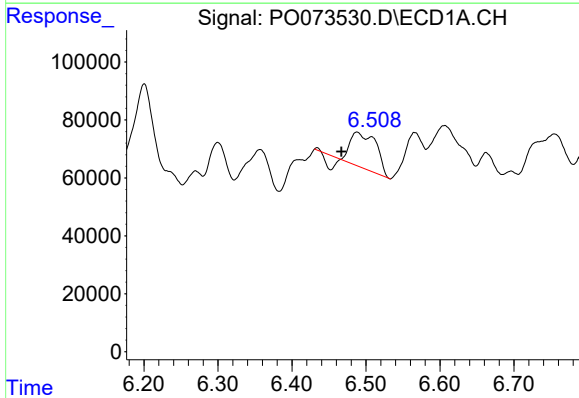


#13 AR-1232-3  
 R.T.: 6.300 min  
 Delta R.T.: 0.007 min  
 Response: 242752  
 Conc: 124.10 ng/ml

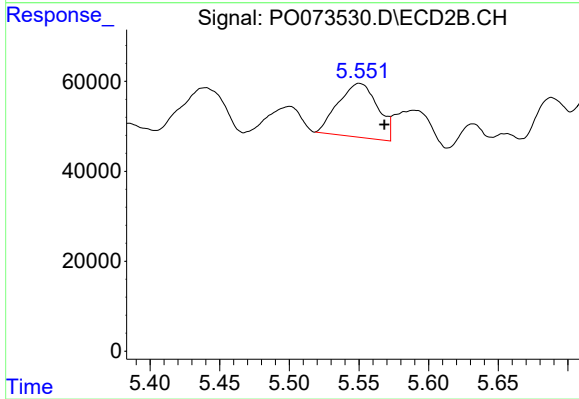
Instrument :  
 ECD\_O  
 ClientSampled :



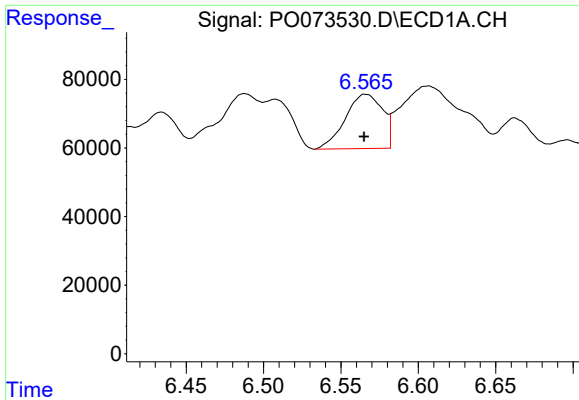
#13 AR-1232-3  
 R.T.: 5.500 min  
 Delta R.T.: 0.028 min  
 Response: -33534  
 Conc: N.D.



#14 AR-1232-4  
 R.T.: 6.488 min  
 Delta R.T.: 0.021 min  
 Response: 262135  
 Conc: 265.13 ng/ml



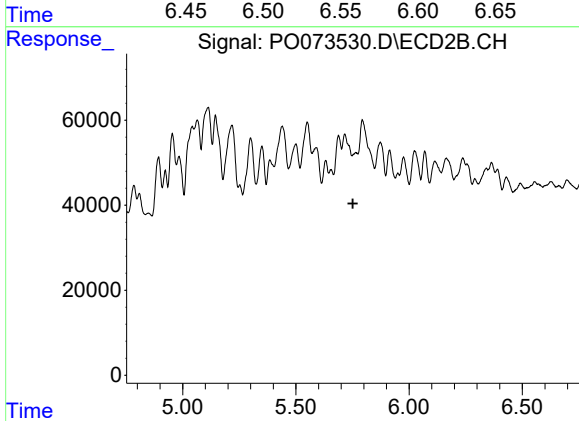
#14 AR-1232-4  
 R.T.: 5.550 min  
 Delta R.T.: -0.018 min  
 Response: 235798  
 Conc: 437.37 ng/ml



#15 AR-1232-5

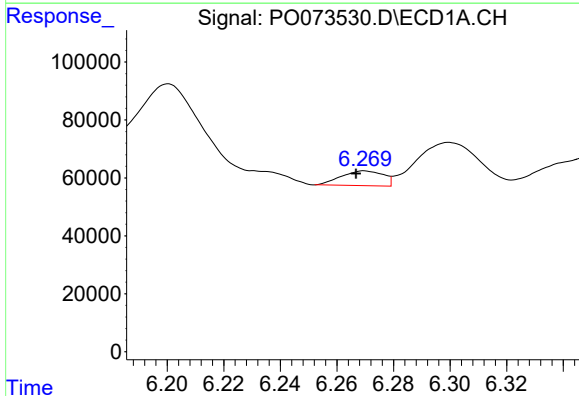
R.T.: 6.566 min  
 Delta R.T.: 0.001 min  
 Response: 265724  
 Conc: 394.69 ng/ml

Instrument :  
 ECD\_O  
 ClientSampleId :



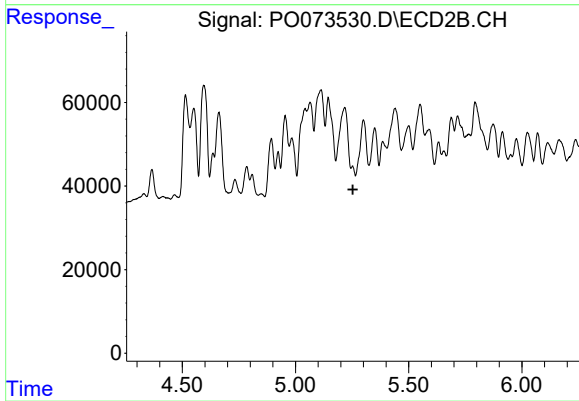
#15 AR-1232-5

R.T.: 0.000 min  
 Exp R.T. : 5.752 min  
 Response: 0  
 Conc: N.D.



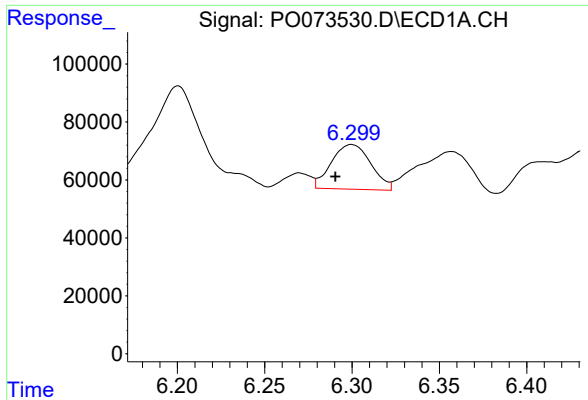
#16 AR-1242-1

R.T.: 6.270 min  
 Delta R.T.: 0.003 min  
 Response: 52201  
 Conc: 19.79 ng/ml



#16 AR-1242-1

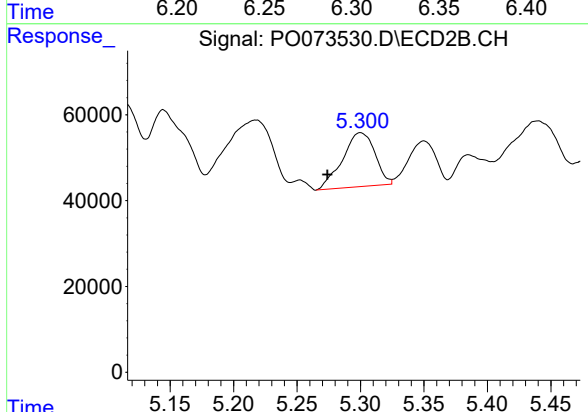
R.T.: 0.000 min  
 Exp R.T. : 5.254 min  
 Response: 0  
 Conc: N.D.



#17 AR-1242-2

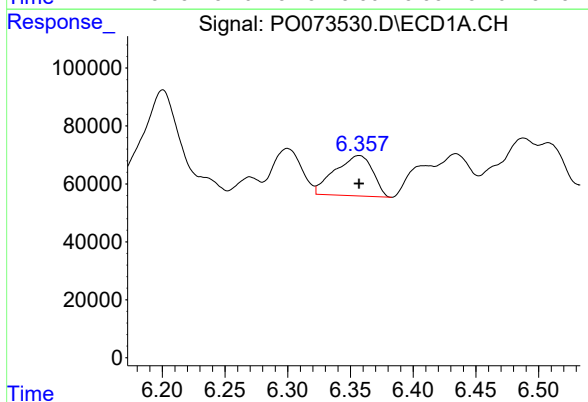
R.T.: 6.300 min  
 Delta R.T.: 0.009 min  
 Response: 242752  
 Conc: 66.41 ng/ml

Instrument :  
 ECD\_O  
 ClientSampleId :



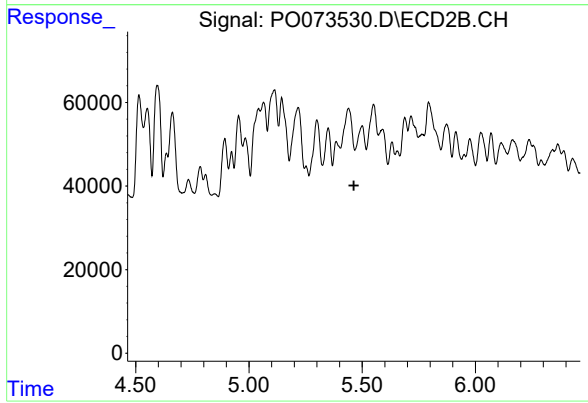
#17 AR-1242-2

R.T.: 5.300 min  
 Delta R.T.: 0.026 min  
 Response: 222755  
 Conc: 98.48 ng/ml



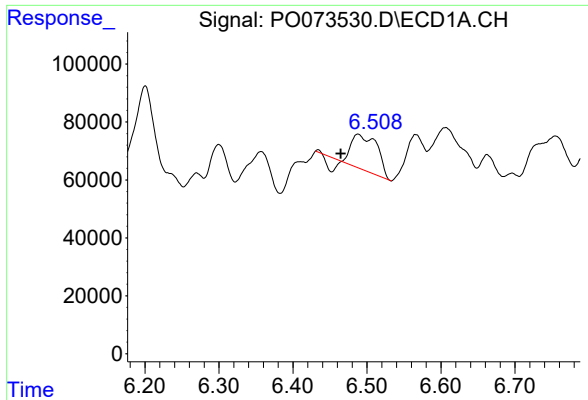
#18 AR-1242-3

R.T.: 6.357 min  
 Delta R.T.: 0.000 min  
 Response: 292416  
 Conc: 132.60 ng/ml



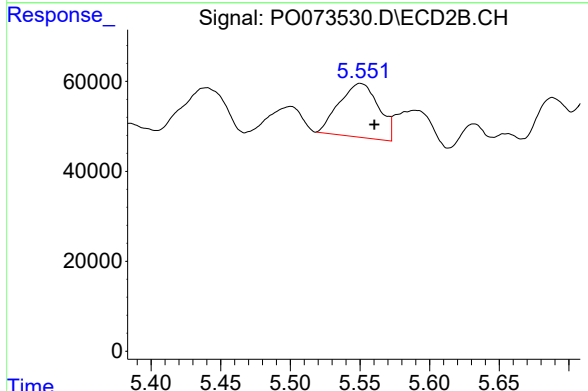
#18 AR-1242-3

R.T.: 0.000 min  
 Exp R.T. : 5.464 min  
 Response: 0  
 Conc: N.D.

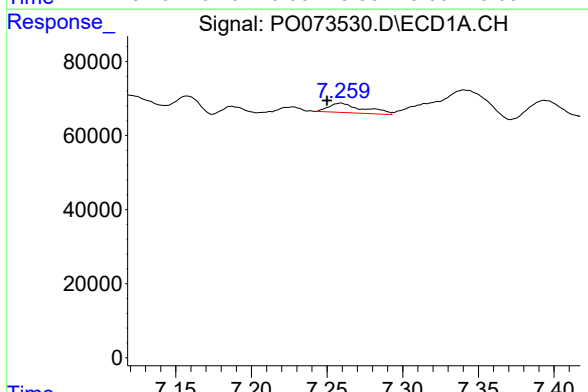


#19 AR-1242-4  
 R.T.: 6.488 min  
 Delta R.T.: 0.023 min  
 Response: 262135  
 Conc: 141.22 ng/ml

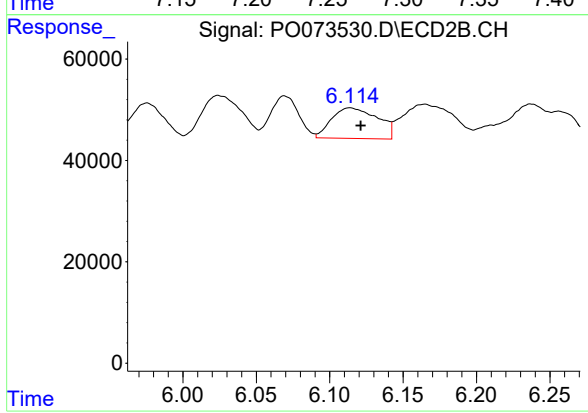
Instrument :  
 ECD\_O  
 ClientSampleId :



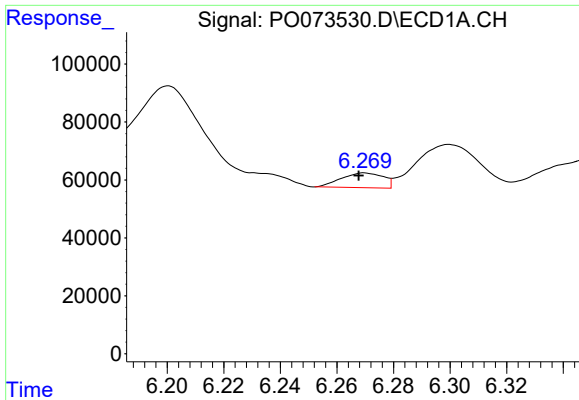
#19 AR-1242-4  
 R.T.: 5.550 min  
 Delta R.T.: -0.010 min  
 Response: 235798  
 Conc: 214.54 ng/ml



#20 AR-1242-5  
 R.T.: 7.259 min  
 Delta R.T.: 0.009 min  
 Response: 40551  
 Conc: 19.28 ng/ml

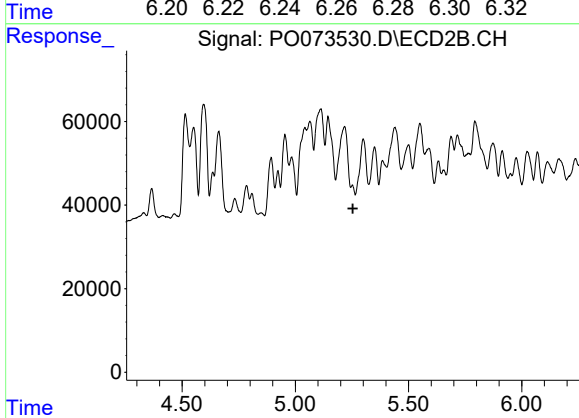


#20 AR-1242-5  
 R.T.: 6.114 min  
 Delta R.T.: -0.007 min  
 Response: 131537  
 Conc: 84.95 ng/ml

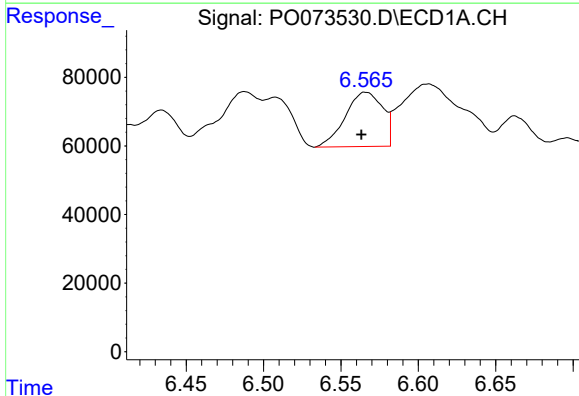


#21 AR-1248-1  
 R.T.: 6.270 min  
 Delta R.T.: 0.002 min  
 Response: 52201  
 Conc: 26.11 ng/ml

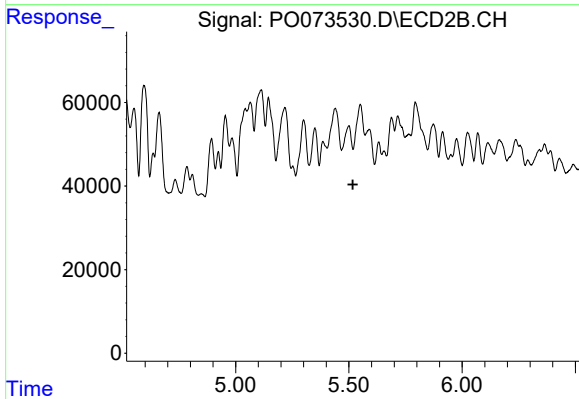
Instrument :  
 ECD\_O  
 ClientSampleId :



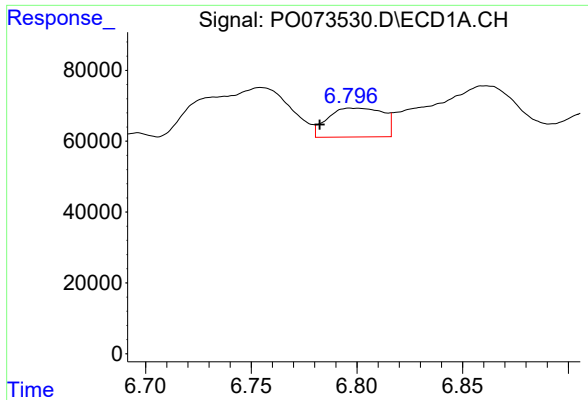
#21 AR-1248-1  
 R.T.: 0.000 min  
 Exp R.T. : 5.255 min  
 Response: 0  
 Conc: N.D.



#22 AR-1248-2  
 R.T.: 6.566 min  
 Delta R.T.: 0.003 min  
 Response: 265724  
 Conc: 102.79 ng/ml



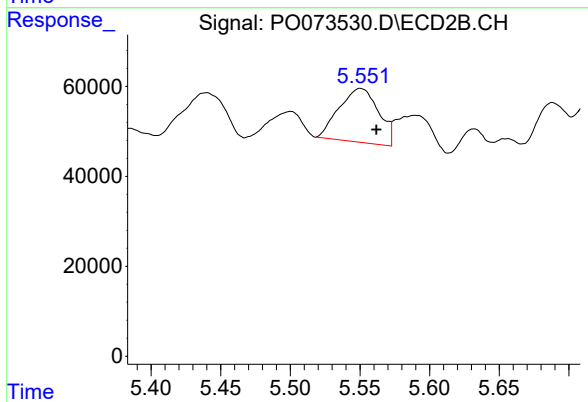
#22 AR-1248-2  
 R.T.: 5.500 min  
 Delta R.T.: -0.017 min  
 Response: -33534  
 Conc: N.D.



#23 AR-1248-3

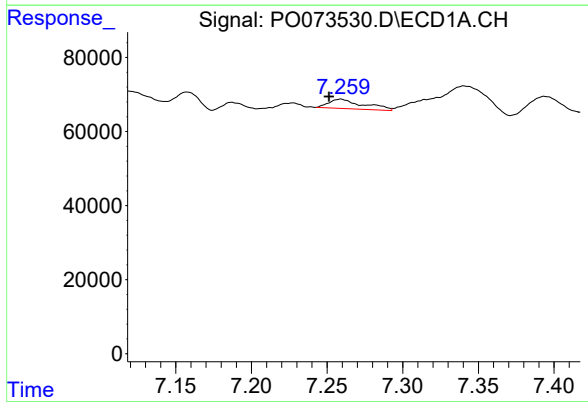
R.T.: 6.799 min  
 Delta R.T.: 0.016 min  
 Response: 148665  
 Conc: 48.51 ng/ml

Instrument :  
 ECD\_O  
 ClientSampleId :



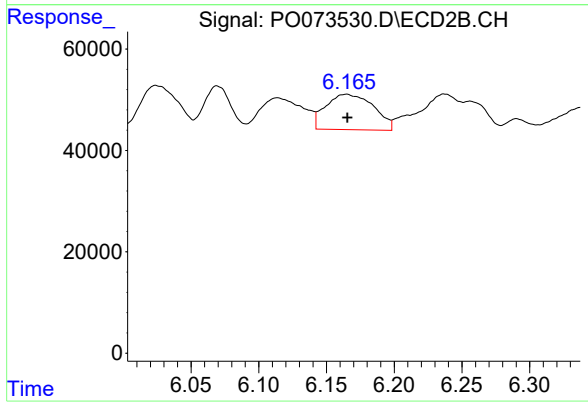
#23 AR-1248-3

R.T.: 5.550 min  
 Delta R.T.: -0.011 min  
 Response: 235798  
 Conc: 138.18 ng/ml



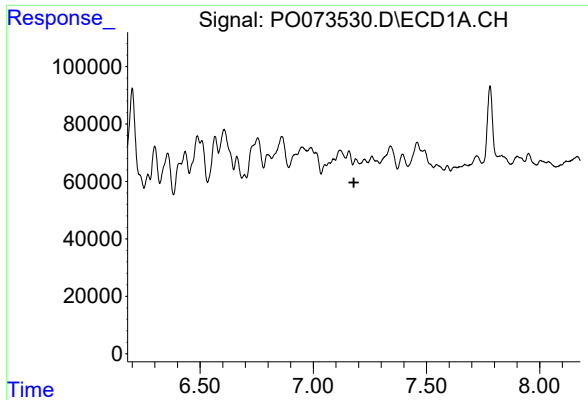
#25 AR-1248-5

R.T.: 7.259 min  
 Delta R.T.: 0.008 min  
 Response: 40551  
 Conc: 11.33 ng/ml



#25 AR-1248-5

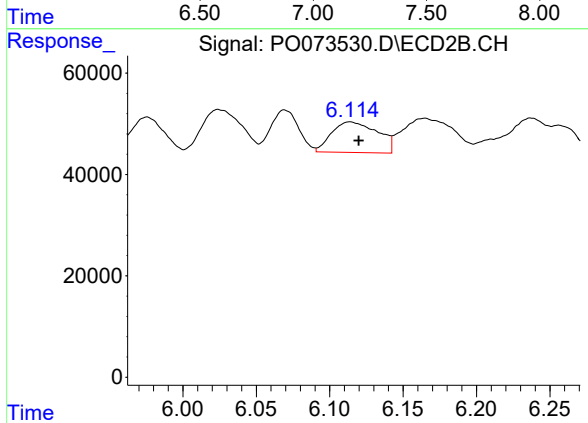
R.T.: 6.165 min  
 Delta R.T.: 0.000 min  
 Response: 171714  
 Conc: 77.33 ng/ml



#26 AR-1254-1

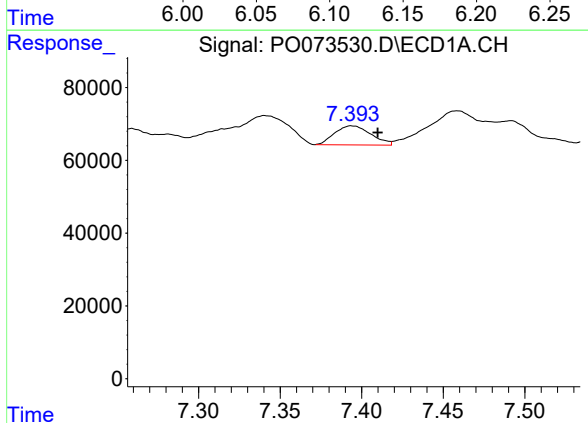
R.T.: 0.000 min  
 Exp R.T.: 7.179 min  
 Response: 0  
 Conc: N.D.

Instrument :  
 ECD\_O  
 ClientSampled :



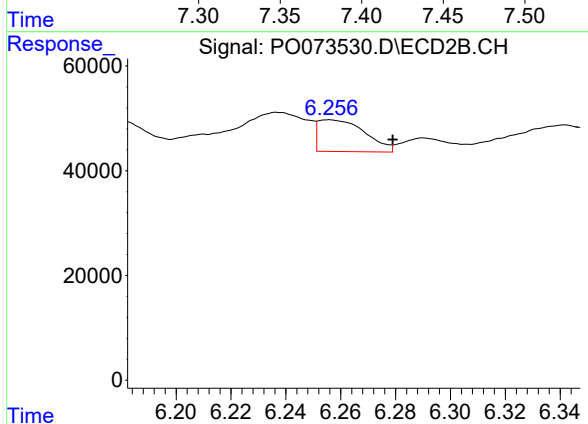
#26 AR-1254-1

R.T.: 6.114 min  
 Delta R.T.: -0.006 min  
 Response: 131537  
 Conc: 42.24 ng/ml



#27 AR-1254-2

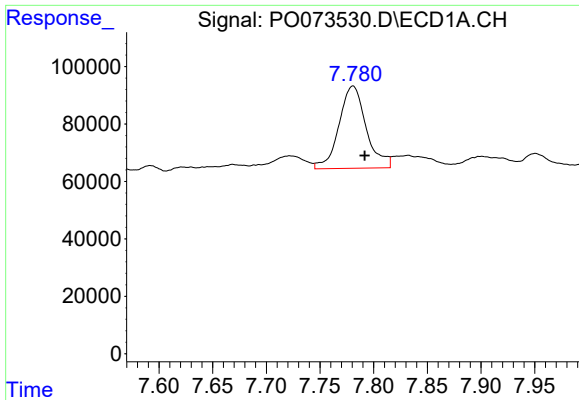
R.T.: 7.394 min  
 Delta R.T.: -0.016 min  
 Response: 80795  
 Conc: 14.83 ng/ml



#27 AR-1254-2

R.T.: 6.256 min  
 Delta R.T.: -0.023 min  
 Response: 71991  
 Conc: 26.37 ng/ml

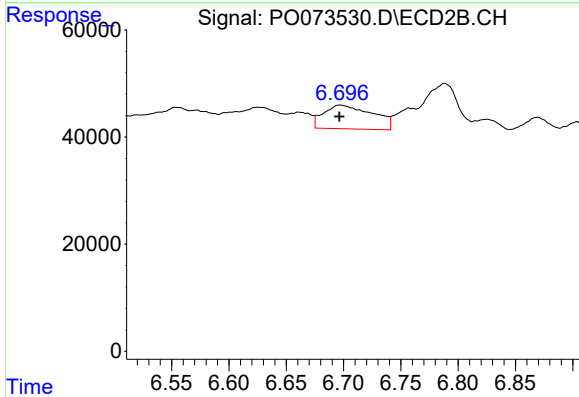




#28 AR-1254-3

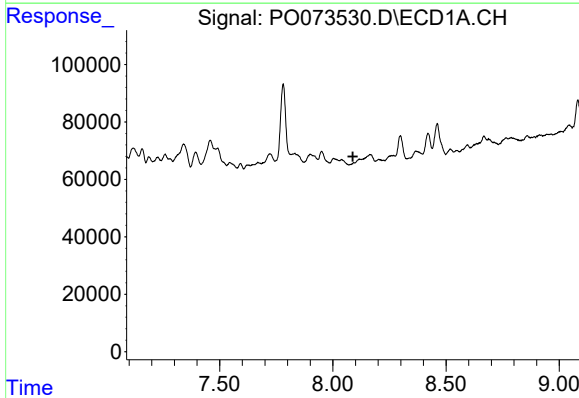
R.T.: 7.781 min  
 Delta R.T.: -0.011 min  
 Response: 505916  
 Conc: 89.27 ng/ml

Instrument :  
 ECD\_O  
 ClientSampled :



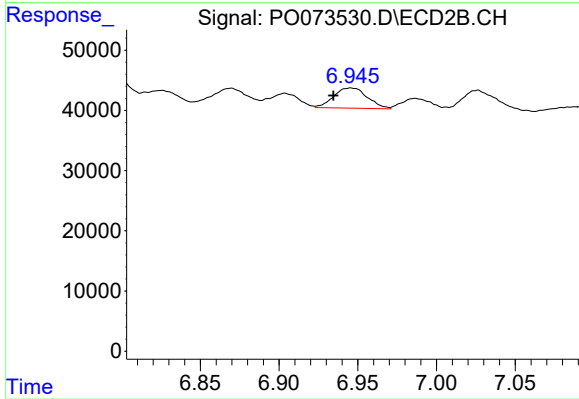
#28 AR-1254-3

R.T.: 6.697 min  
 Delta R.T.: 0.000 min  
 Response: 131950  
 Conc: 31.20 ng/ml



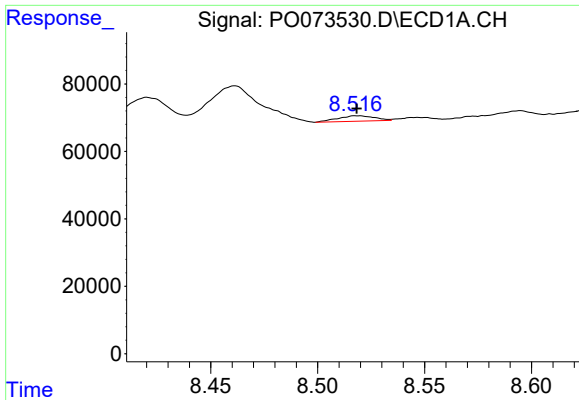
#29 AR-1254-4

R.T.: 0.000 min  
 Exp R.T. : 8.088 min  
 Response: 0  
 Conc: N.D.



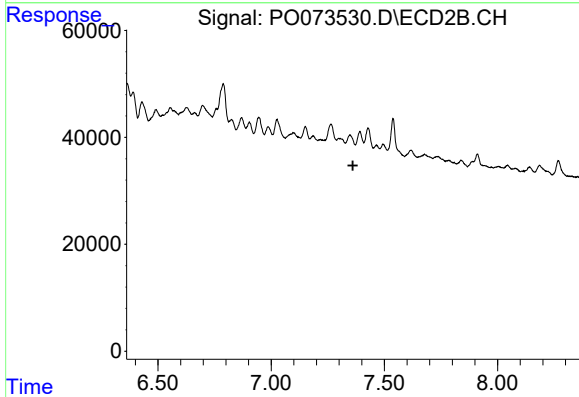
#29 AR-1254-4

R.T.: 6.946 min  
 Delta R.T.: 0.011 min  
 Response: 49986  
 Conc: 17.31 ng/ml

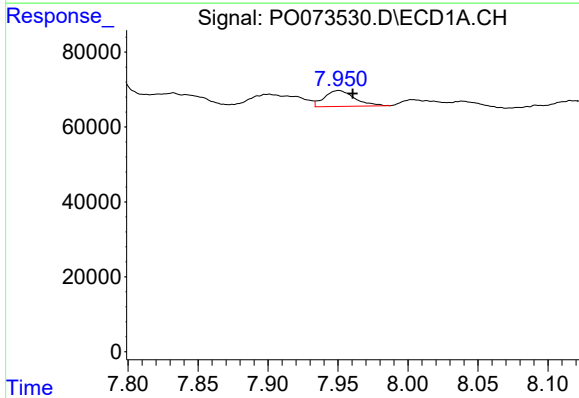


#30 AR-1254-5  
 R.T.: 8.519 min  
 Delta R.T.: 0.000 min  
 Response: 19331  
 Conc: 4.06 ng/ml

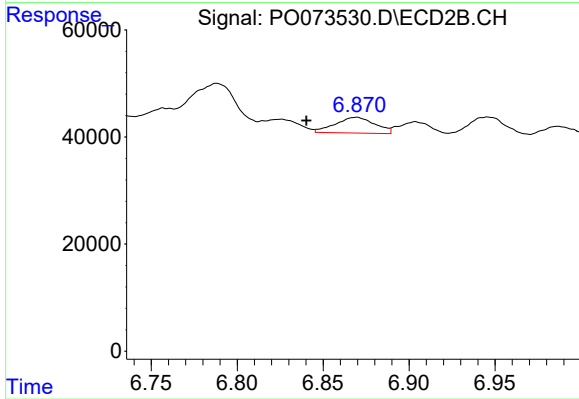
Instrument :  
 ECD\_O  
 ClientSampled :



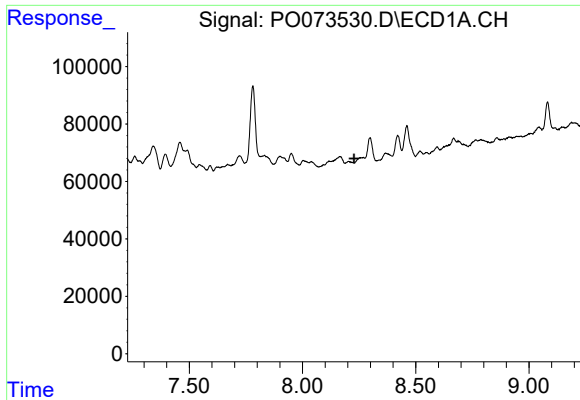
#30 AR-1254-5  
 R.T.: 0.000 min  
 Exp R.T. : 7.361 min  
 Response: 0  
 Conc: N.D.



#31 AR-1260-1  
 R.T.: 7.950 min  
 Delta R.T.: -0.010 min  
 Response: 63482  
 Conc: 15.73 ng/ml



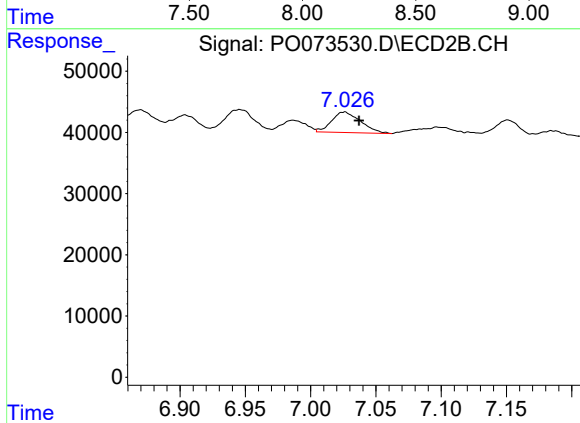
#31 AR-1260-1  
 R.T.: 6.869 min  
 Delta R.T.: 0.029 min  
 Response: 47331  
 Conc: 17.62 ng/ml



#32 AR-1260-2

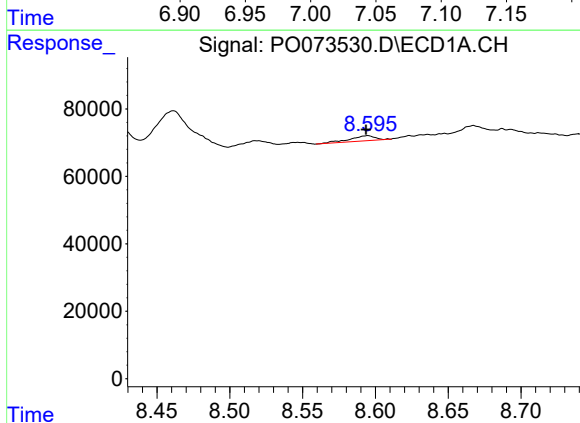
R.T.: 0.000 min  
 Exp R.T.: 8.227 min  
 Response: 0  
 Conc: N.D.

Instrument :  
 ECD\_O  
 ClientSampleId :



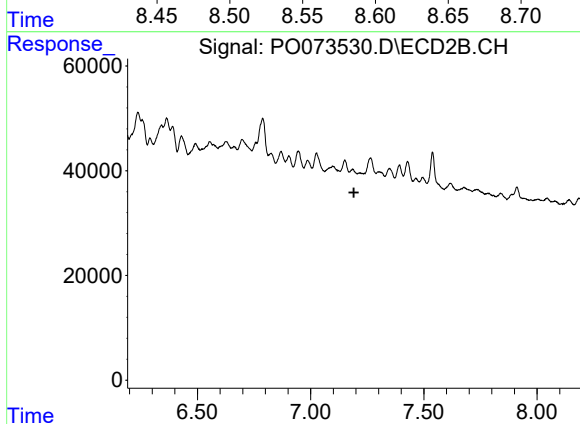
#32 AR-1260-2

R.T.: 7.026 min  
 Delta R.T.: -0.011 min  
 Response: 52074  
 Conc: 15.61 ng/ml



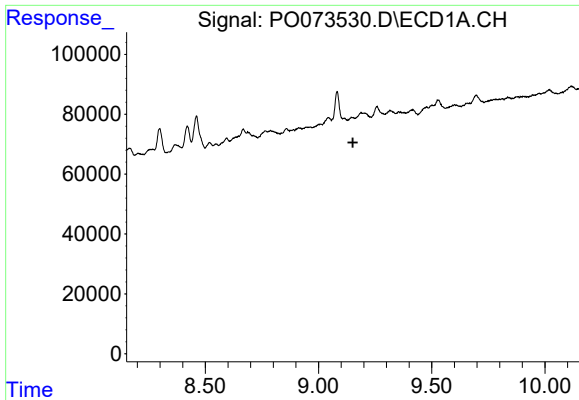
#33 AR-1260-3

R.T.: 8.594 min  
 Delta R.T.: 0.000 min  
 Response: 18593  
 Conc: 4.19 ng/ml



#33 AR-1260-3

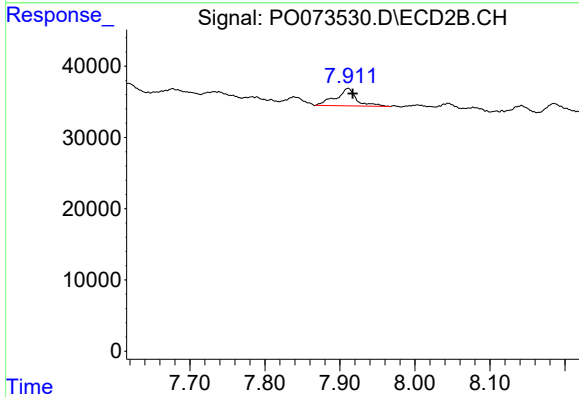
R.T.: 0.000 min  
 Exp R.T.: 7.191 min  
 Response: 0  
 Conc: N.D.



#35 AR-1260-5

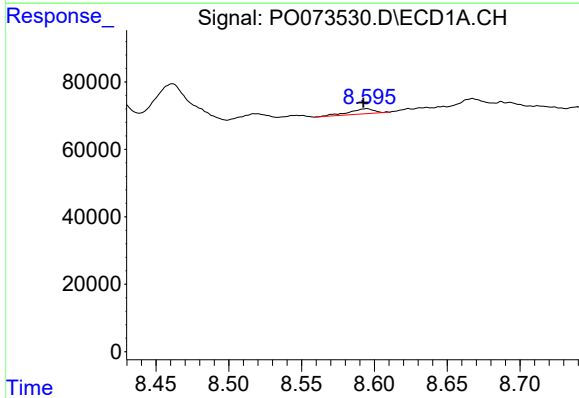
R.T.: 0.000 min  
 Exp R.T.: 9.152 min  
 Response: 0  
 Conc: N.D.

Instrument :  
 ECD\_O  
 ClientSampleId :



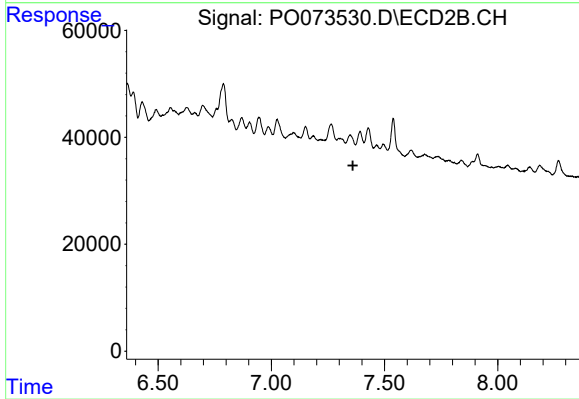
#35 AR-1260-5

R.T.: 7.911 min  
 Delta R.T.: -0.007 min  
 Response: 46721  
 Conc: 7.54 ng/ml



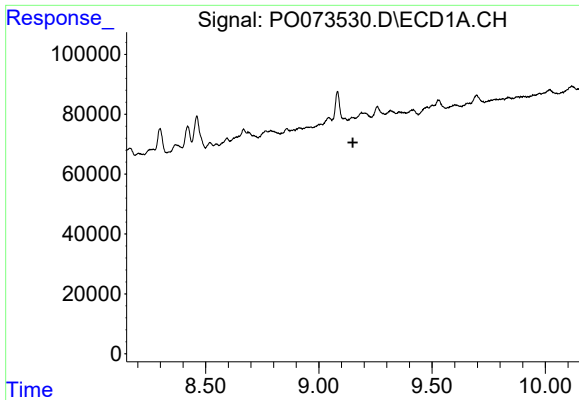
#36 AR-1262-1

R.T.: 8.594 min  
 Delta R.T.: 0.002 min  
 Response: 18593  
 Conc: 2.98 ng/ml



#36 AR-1262-1

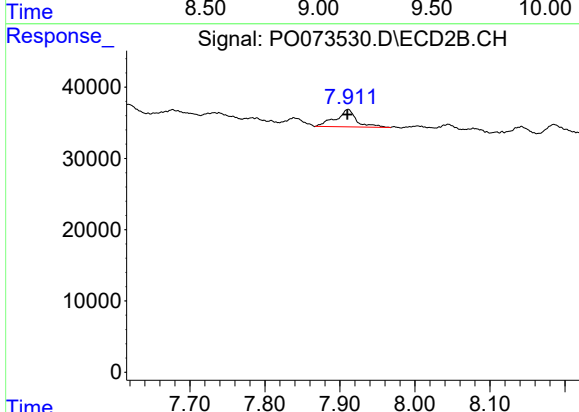
R.T.: 0.000 min  
 Exp R.T.: 7.360 min  
 Response: 0  
 Conc: N.D.



#37 AR-1262-2

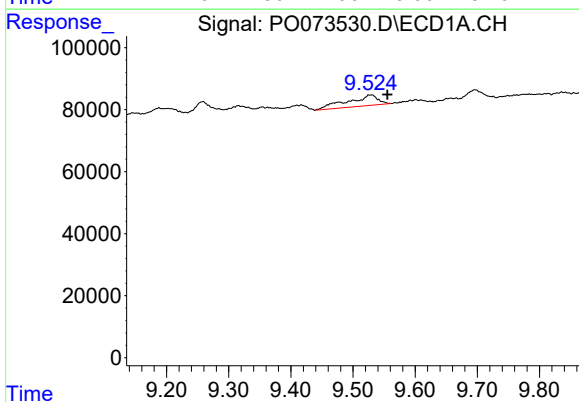
R.T.: 0.000 min  
 Exp R.T.: 9.150 min  
 Response: 0  
 Conc: N.D.

Instrument :  
 ECD\_O  
 ClientSampled :



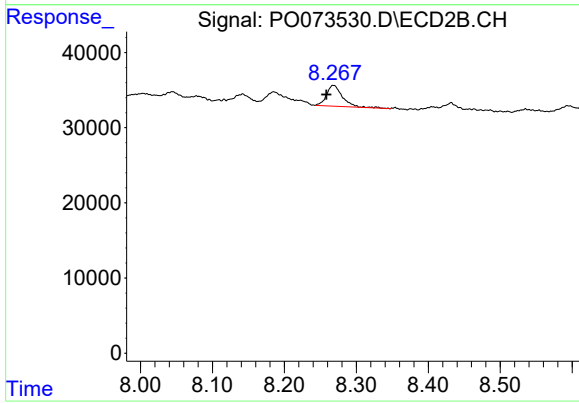
#37 AR-1262-2

R.T.: 7.911 min  
 Delta R.T.: 0.001 min  
 Response: 46721  
 Conc: 7.13 ng/ml



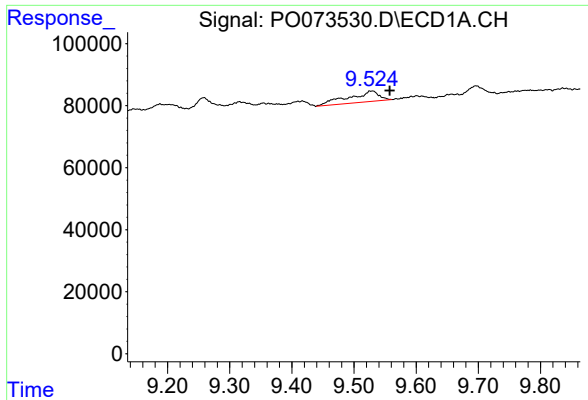
#39 AR-1262-4

R.T.: 9.529 min  
 Delta R.T.: -0.027 min  
 Response: 118921  
 Conc: 21.61 ng/ml



#39 AR-1262-4

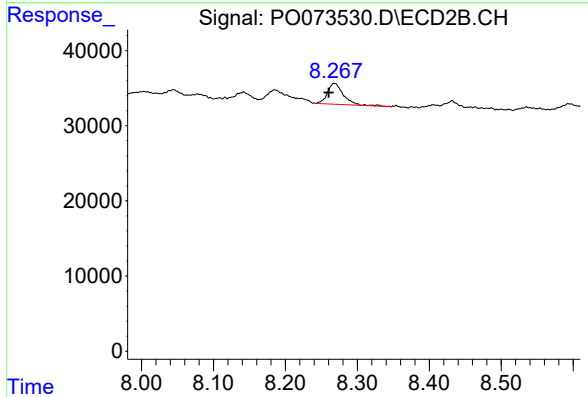
R.T.: 8.268 min  
 Delta R.T.: 0.010 min  
 Response: 42893  
 Conc: 8.98 ng/ml



#42 AR-1268-2

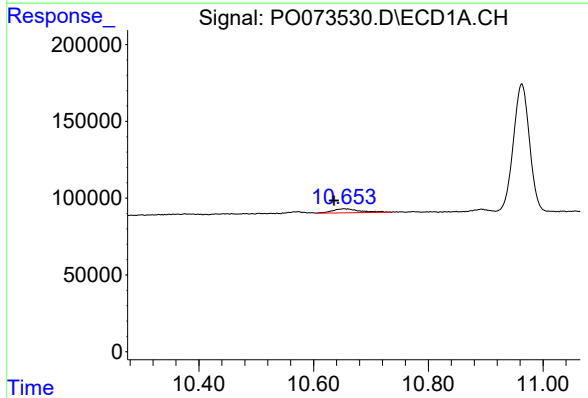
R.T.: 9.529 min  
 Delta R.T.: -0.029 min  
 Response: 118921  
 Conc: 9.79 ng/ml

Instrument :  
 ECD\_O  
 ClientSampled :



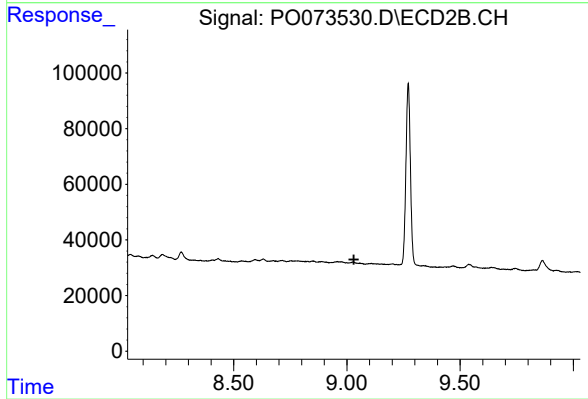
#42 AR-1268-2

R.T.: 8.268 min  
 Delta R.T.: 0.008 min  
 Response: 42893  
 Conc: 5.87 ng/ml



#45 AR-1268-5

R.T.: 10.654 min  
 Delta R.T.: 0.018 min  
 Response: 88767  
 Conc: 2.79 ng/ml



#45 AR-1268-5

R.T.: 0.000 min  
 Exp R.T. : 9.031 min  
 Response: 0  
 Conc: N.D.