

Data Path : Z:\pestpcbsrv\HPCHEM1\ECD\_0\Data\PO112420\  
 Data File : PO073532.D  
 Signal(s) : Signal #1: ECD1A.CH Signal #2: ECD2B.CH  
 Acq On : 24 Nov 2020 20:04  
 Operator : DD\AJ  
 Sample : L4871-01MSD  
 Misc :  
 ALS Vial : 29 Sample Multiplier: 1

Instrument :  
 ECD\_O  
 ClientSampled :

Integration File signal 1: autoint1.e  
 Integration File signal 2: autoint2.e  
 Quant Time: Nov 25 10:38:26 2020  
 Quant Method : Z:\pestpcbsrv\HPCHEM1\ECD\_0\methods\PO112320.M  
 Quant Title : GC EXTRACTABLES  
 QLast Update : Wed Nov 25 10:04:26 2020  
 Response via : Initial Calibration  
 Integrator: ChemStation 6890 Scale Mode: Small noise peaks clipped

Volume Inj. : 2 µl  
 Signal #1 Phase : ZB-MR1 Signal #2 Phase: ZB-MR2  
 Signal #1 Info : 30Mx0.32mmx 0.50µ Signal #2 Info : 30M x 0.32mm x 0.25µm

Compound	RT#1	RT#2	Resp#1	Resp#2	ng/ml	ng/ml
System Monitoring Compounds						
1) SA Tetrachlo...	4.952	4.025	1075465	1060486	12.857	21.630 #
2) SA Decachlor...	10.961	9.271	1497299	852724	18.160	18.598
Target Compounds						
3) L1 AR-1016-1	6.273	5.268	1106083	410024	335.889	201.267 #
4) L1 AR-1016-2	6.297	5.288	1722818	914674	374.243	327.049
5) L1 AR-1016-3	6.362	5.476	1086000	344307	396.608	231.539 #
6) L1 AR-1016-4	6.470	5.529	921773	367963	403.856	309.613
7) L1 AR-1016-5	6.785	5.753	895948	390733	398.492	259.571 #
8) L2 AR-1221-1	5.203	4.274	170054	62007	171.434	110.016 #
9) L2 AR-1221-2	5.302	4.370	276833	170757	393.605	422.420
10) L2 AR-1221-3	5.386	4.461	611823	341284	272.879	256.970
11) L3 AR-1232-1	5.386	4.461	611823	341284	331.525	300.065
12) L3 AR-1232-2	5.976	5.288	914663	914674	961.157	765.295
13) L3 AR-1232-3	6.297	5.476	1722818	344307	880.728	548.856 #
14) L3 AR-1232-4	6.470	5.573	921773	531120	932.298	985.139
15) L3 AR-1232-5	6.567	5.753	829683	390733	1232.354	661.389 #
16) L4 AR-1242-1	6.273	5.268	1106083	410024	419.375	250.699 #
17) L4 AR-1242-2	6.297	5.268	1722818	410024	471.303	181.280 #
18) L4 AR-1242-3	6.362	5.476	1086000	344307	492.451	286.777 #
19) L4 AR-1242-4	6.470	5.573	921773	531120	496.604	483.232
20) L4 AR-1242-5	7.255	6.129	121636	550791	57.830	355.721 #
21) L5 AR-1248-1	6.273	5.268	1106083	410024	553.289	326.953 #
22) L5 AR-1248-2	6.567	5.529	829683	367963	320.935	217.583 #
23) L5 AR-1248-3	6.785	5.573	895948	531120	292.358	311.237
24) L5 AR-1248-4	7.214	5.753	106246	390733	28.482	190.074 #
25) L5 AR-1248-5	7.255	6.171	121636	198839	33.996	89.546 #
26) L6 AR-1254-1	7.183	6.129	526215	550791	152.159	176.886
27) L6 AR-1254-2	7.412	6.288	718019	409696	131.796	150.071
28) L6 AR-1254-3	7.790	6.680f	828910	202702	146.263	47.929 #
29) L6 AR-1254-4	8.088	6.941	255390	123751	52.787	42.864
30) L6 AR-1254-5	8.516	7.364	2663776	1443325	559.574	390.810 #
31) L7 AR-1260-1	7.960	6.838	1551843	997586	384.573	371.295
32) L7 AR-1260-2	8.226	7.034	2063625	1267745	375.487	380.079
33) L7 AR-1260-3	8.591	7.187	1444377	1093879	325.491	354.102
34) L7 AR-1260-4	8.821	7.665	1562152	837177	361.931	340.205
35) L7 AR-1260-5	9.147	7.910	3628325	2190653	367.430	353.613
36) L8 AR-1262-1	8.591	7.364	1444377	1443325	231.345	744.773 #
37) L8 AR-1262-2	9.147	7.910	3628325	2190653	335.419	334.123
38) L8 AR-1262-3	9.479f	8.195	2216623	515558	301.993	191.078 #
39) L8 AR-1262-4	9.533f	8.256	1273166	1557267	231.357	326.149 #
40) L8 AR-1262-5	10.216	8.752	904676	502186	232.422	219.575
41) L9 AR-1268-1	9.479f	8.195	2216623	515558	158.689	63.288 #

Data Path : Z:\pestpcbsrv\HPCHEM1\ECD\_0\Data\PO112420\  
 Data File : PO073532.D  
 Signal(s) : Signal #1: ECD1A.CH Signal #2: ECD2B.CH  
 Acq On : 24 Nov 2020 20:04  
 Operator : DD\AJ  
 Sample : L4871-01MSD  
 Misc :  
 ALS Vial : 29 Sample Multiplier: 1

Instrument :  
 ECD\_0  
 ClientSampleId :

Integration File signal 1: autoint1.e  
 Integration File signal 2: autoint2.e  
 Quant Time: Nov 25 10:38:26 2020  
 Quant Method : Z:\pestpcbsrv\HPCHEM1\ECD\_0\methods\PO112320.M  
 Quant Title : GC EXTRACTABLES  
 QLast Update : Wed Nov 25 10:04:26 2020  
 Response via : Initial Calibration  
 Integrator: ChemStation 6890 Scale Mode: Small noise peaks clipped

Volume Inj. : 2 µl  
 Signal #1 Phase : ZB-MR1 Signal #2 Phase: ZB-MR2  
 Signal #1 Info : 30Mx0.32mmx 0.50µ Signal #2 Info : 30M x 0.32mm x 0.25µm

	Compound	RT#1	RT#2	Resp#1	Resp#2	ng/ml	ng/ml
42)	L9 AR-1268-2	9.533f	8.256	1273166	1557267	104.802	213.215 #
43)	L9 AR-1268-3	9.779	8.466	80416	38083	7.634	6.089
44)	L9 AR-1268-4	10.216	8.752	904676	502186	200.537	187.481
45)	L9 AR-1268-5	10.628	9.029	390528	177654	12.270	9.739

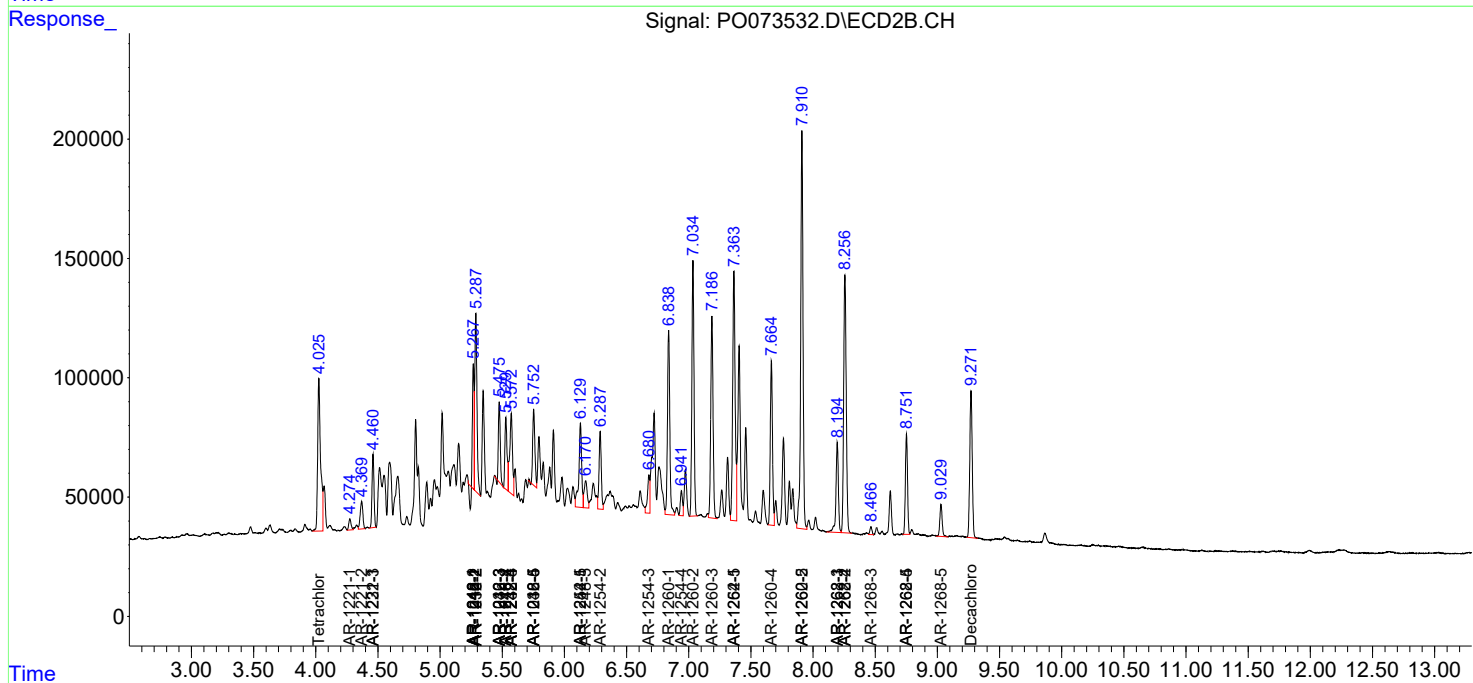
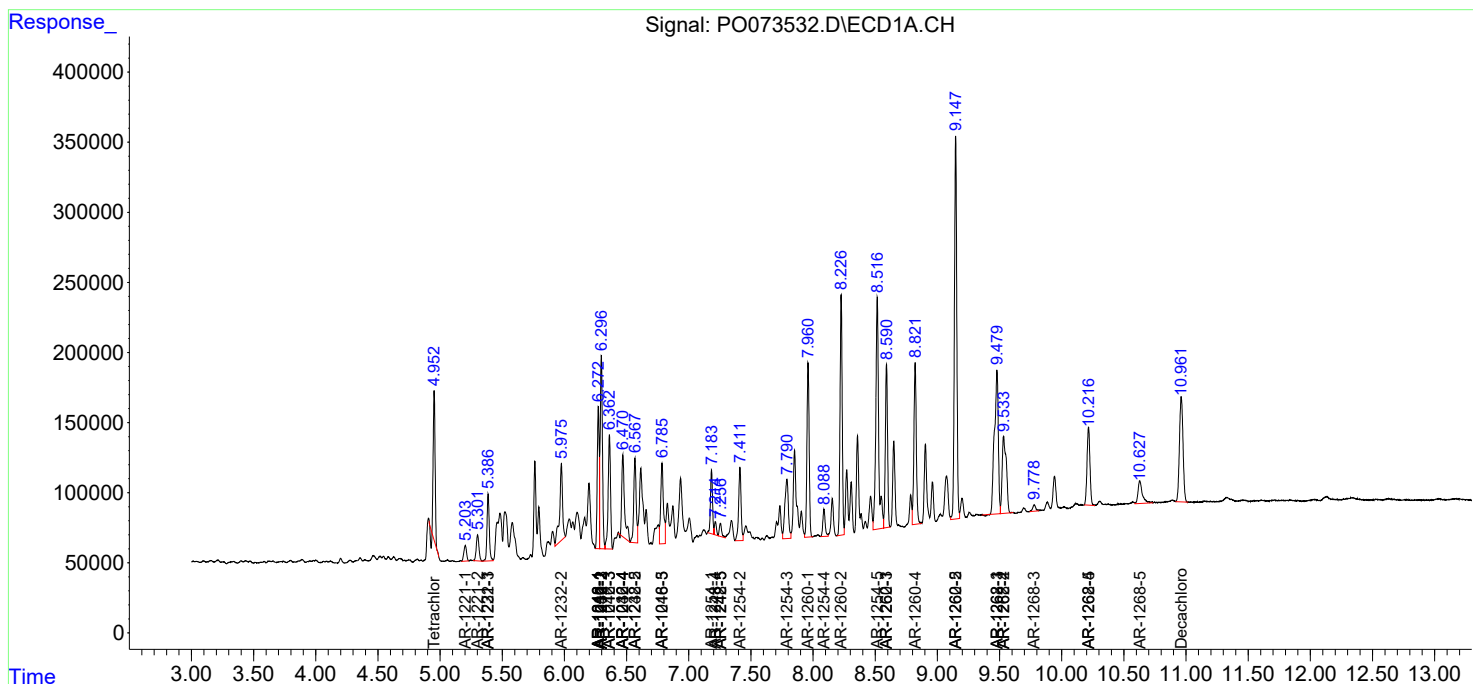
(f)=RT Delta > 1/2 Window (#)=Amounts differ by > 25% (m)=manual int.

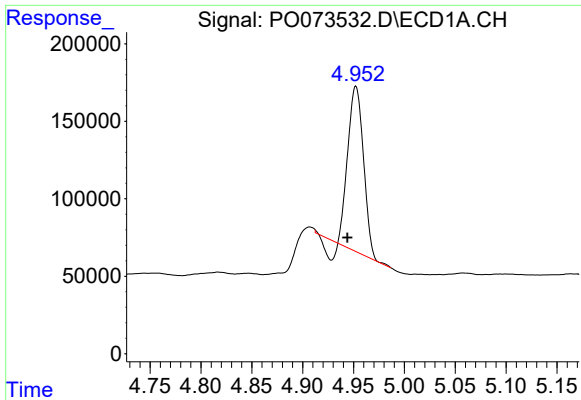
Data Path : Z:\pestpcbsrv\HPCHEM1\ECD\_0\Data\PO112420\  
 Data File : PO073532.D  
 Signal(s) : Signal #1: ECD1A.CH Signal #2: ECD2B.CH  
 Acq On : 24 Nov 2020 20:04  
 Operator : DD\AJ  
 Sample : L4871-01MSD  
 Misc :  
 ALS Vial : 29 Sample Multiplier: 1

Instrument :  
 ECD\_O  
 ClientSampled :

Integration File signal 1: autoint1.e  
 Integration File signal 2: autoint2.e  
 Quant Time: Nov 25 10:38:26 2020  
 Quant Method : Z:\pestpcbsrv\HPCHEM1\ECD\_0\methods\PO112320.M  
 Quant Title : GC EXTRACTABLES  
 QLast Update : Wed Nov 25 10:04:26 2020  
 Response via : Initial Calibration  
 Integrator: ChemStation 6890 Scale Mode: Small noise peaks clipped

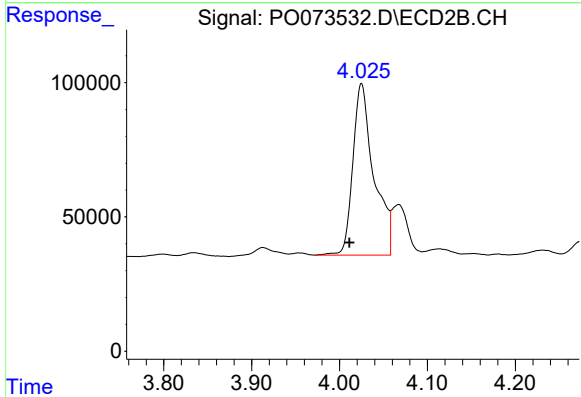
Volume Inj. : 2 µl  
 Signal #1 Phase : ZB-MR1 Signal #2 Phase: ZB-MR2  
 Signal #1 Info : 30Mx0.32mmx 0.50µ Signal #2 Info : 30M x 0.32mm x 0.25µm



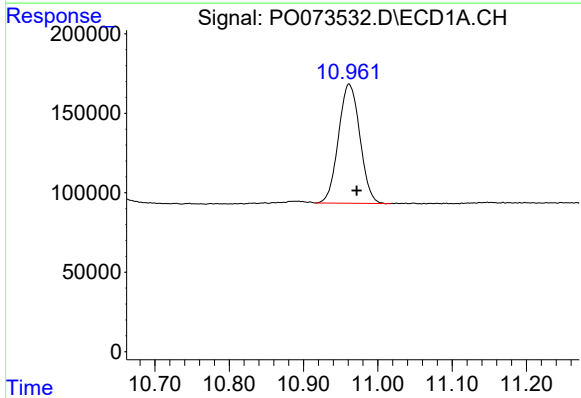


#1 Tetrachloro-m-xylene  
 R.T.: 4.952 min  
 Delta R.T.: 0.008 min  
 Response: 1075465  
 Conc: 12.86 ng/ml

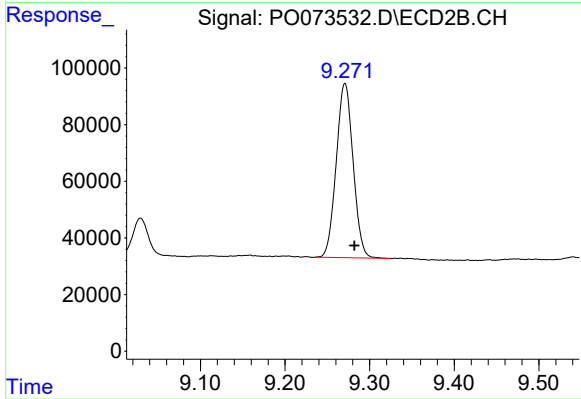
Instrument :  
 ECD\_O  
 ClientSampled :



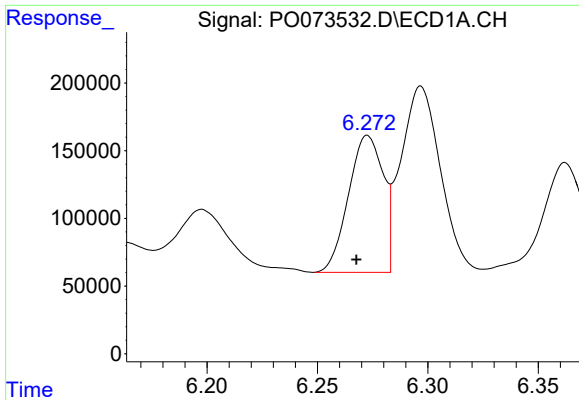
#1 Tetrachloro-m-xylene  
 R.T.: 4.025 min  
 Delta R.T.: 0.014 min  
 Response: 1060486  
 Conc: 21.63 ng/ml



#2 Decachlorobiphenyl  
 R.T.: 10.961 min  
 Delta R.T.: -0.010 min  
 Response: 1497299  
 Conc: 18.16 ng/ml



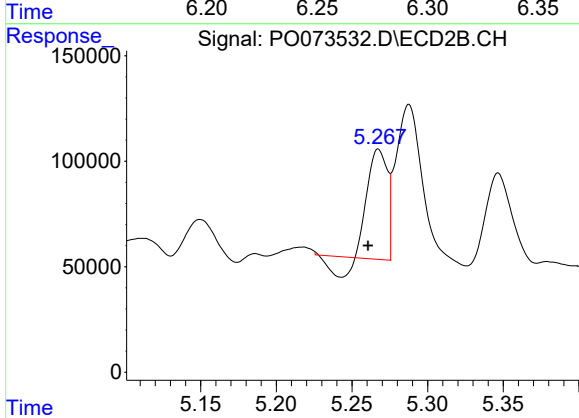
#2 Decachlorobiphenyl  
 R.T.: 9.271 min  
 Delta R.T.: -0.011 min  
 Response: 852724  
 Conc: 18.60 ng/ml



#3 AR-1016-1

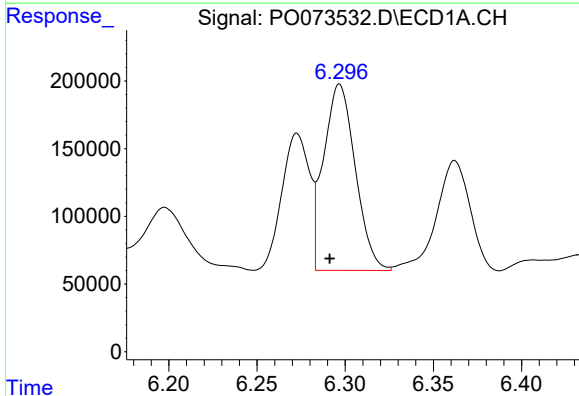
R.T.: 6.273 min  
 Delta R.T.: 0.005 min  
 Response: 1106083  
 Conc: 335.89 ng/ml

Instrument :  
 ECD\_O  
 ClientSampled :



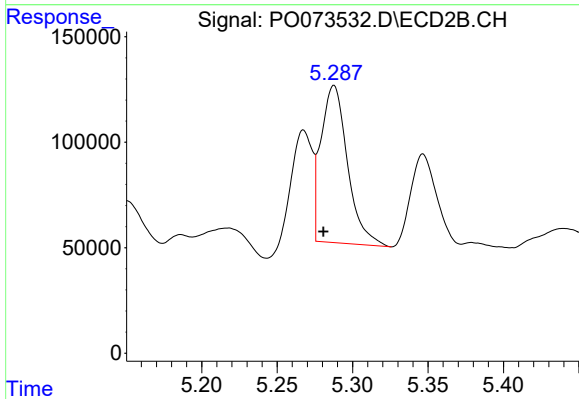
#3 AR-1016-1

R.T.: 5.268 min  
 Delta R.T.: 0.007 min  
 Response: 410024  
 Conc: 201.27 ng/ml



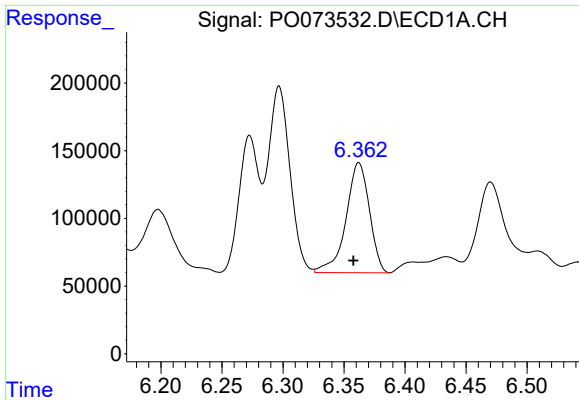
#4 AR-1016-2

R.T.: 6.297 min  
 Delta R.T.: 0.006 min  
 Response: 1722818  
 Conc: 374.24 ng/ml



#4 AR-1016-2

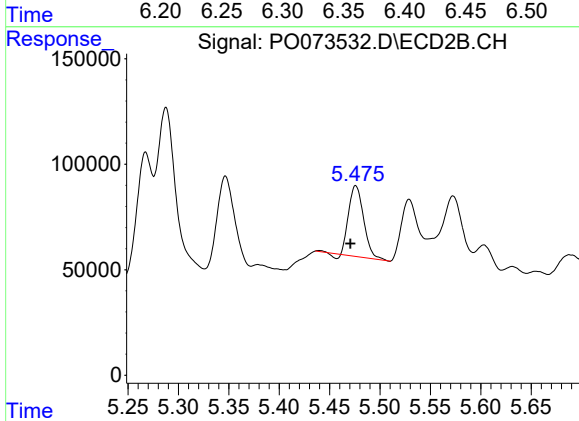
R.T.: 5.288 min  
 Delta R.T.: 0.007 min  
 Response: 914674  
 Conc: 327.05 ng/ml



#5 AR-1016-3

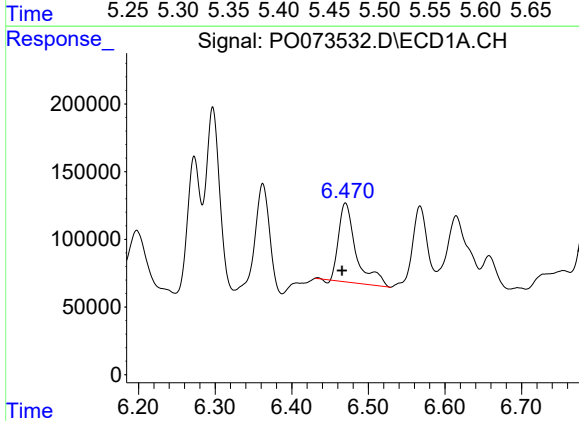
R.T.: 6.362 min  
 Delta R.T.: 0.005 min  
 Response: 1086000  
 Conc: 396.61 ng/ml

Instrument :  
 ECD\_O  
 ClientSampled :



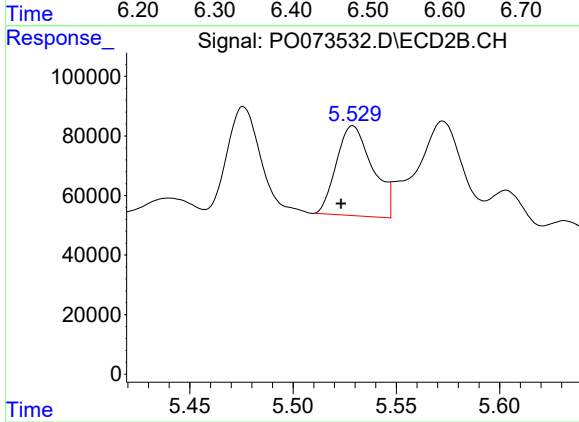
#5 AR-1016-3

R.T.: 5.476 min  
 Delta R.T.: 0.005 min  
 Response: 344307  
 Conc: 231.54 ng/ml



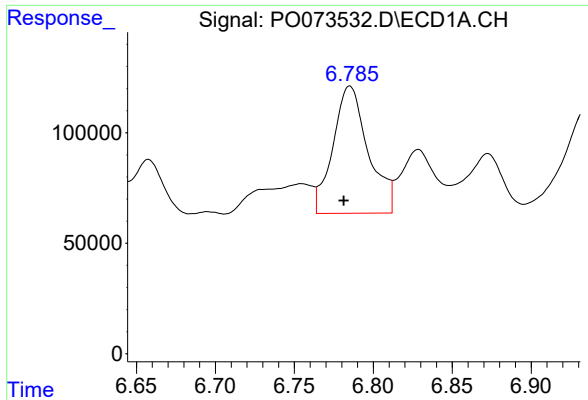
#6 AR-1016-4

R.T.: 6.470 min  
 Delta R.T.: 0.005 min  
 Response: 921773  
 Conc: 403.86 ng/ml



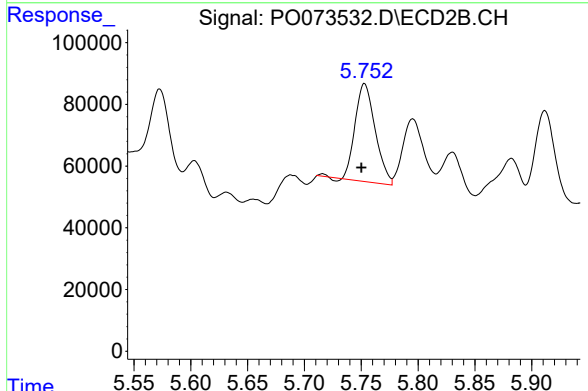
#6 AR-1016-4

R.T.: 5.529 min  
 Delta R.T.: 0.006 min  
 Response: 367963  
 Conc: 309.61 ng/ml

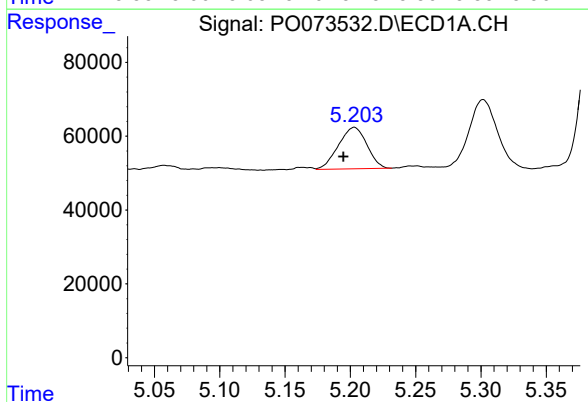


#7 AR-1016-5  
 R.T.: 6.785 min  
 Delta R.T.: 0.004 min  
 Response: 895948  
 Conc: 398.49 ng/ml

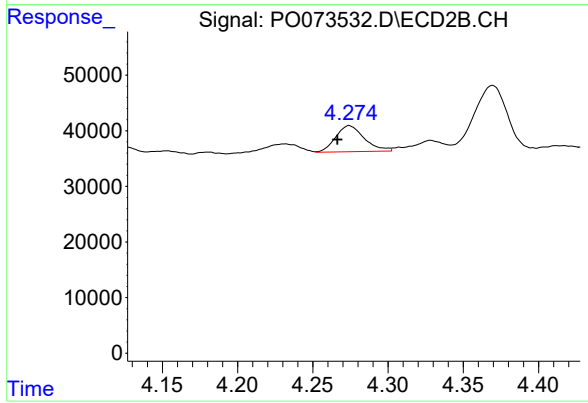
Instrument :  
 ECD\_O  
 ClientSampled :



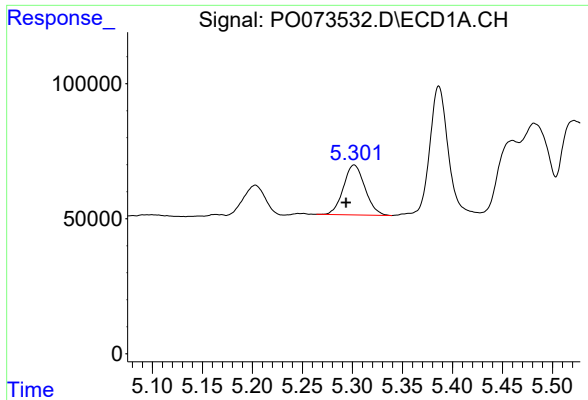
#7 AR-1016-5  
 R.T.: 5.753 min  
 Delta R.T.: 0.003 min  
 Response: 390733  
 Conc: 259.57 ng/ml



#8 AR-1221-1  
 R.T.: 5.203 min  
 Delta R.T.: 0.008 min  
 Response: 170054  
 Conc: 171.43 ng/ml

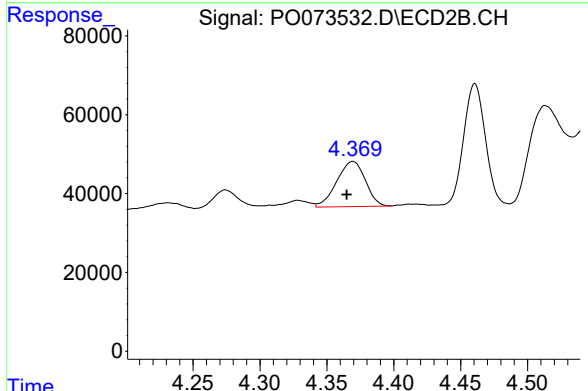


#8 AR-1221-1  
 R.T.: 4.274 min  
 Delta R.T.: 0.008 min  
 Response: 62007  
 Conc: 110.02 ng/ml

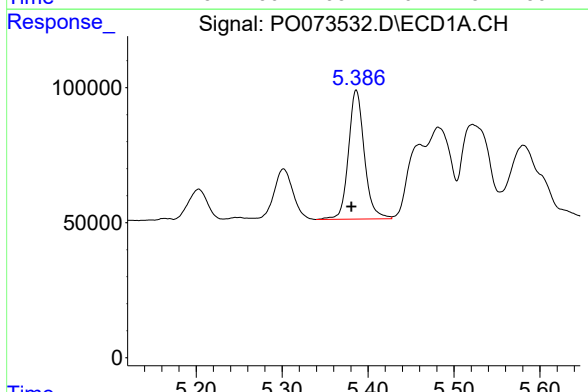


#9 AR-1221-2  
 R.T.: 5.302 min  
 Delta R.T.: 0.008 min  
 Response: 276833  
 Conc: 393.61 ng/ml

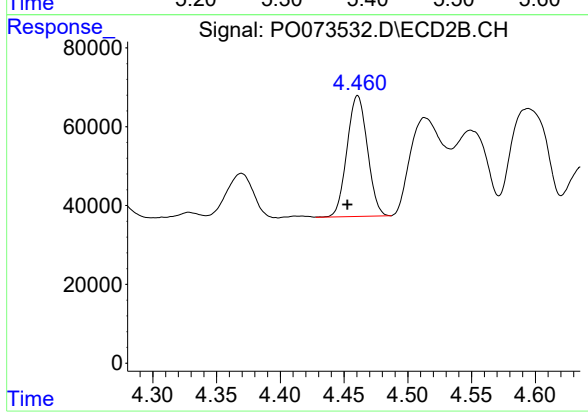
Instrument :  
 ECD\_O  
 ClientSampleId :



#9 AR-1221-2  
 R.T.: 4.370 min  
 Delta R.T.: 0.005 min  
 Response: 170757  
 Conc: 422.42 ng/ml

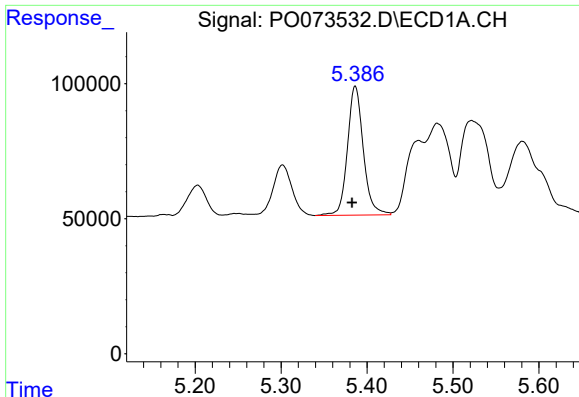


#10 AR-1221-3  
 R.T.: 5.386 min  
 Delta R.T.: 0.006 min  
 Response: 611823  
 Conc: 272.88 ng/ml



#10 AR-1221-3  
 R.T.: 4.461 min  
 Delta R.T.: 0.008 min  
 Response: 341284  
 Conc: 256.97 ng/ml

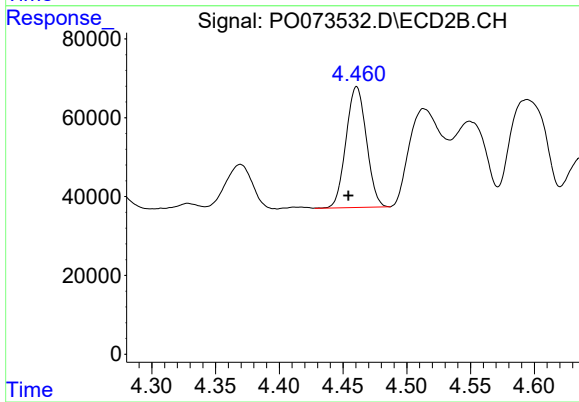




#11 AR-1232-1

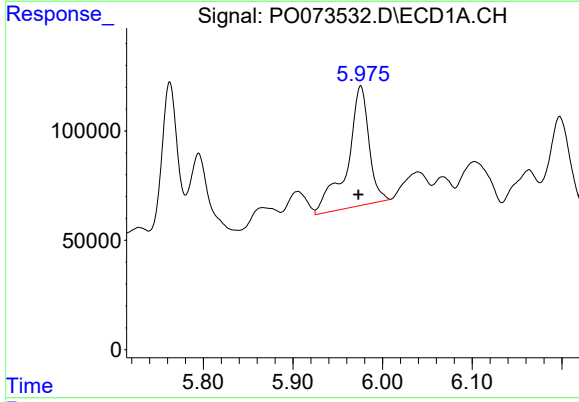
R.T.: 5.386 min  
 Delta R.T.: 0.004 min  
 Response: 611823  
 Conc: 331.52 ng/ml

Instrument :  
 ECD\_O  
 ClientSampleId :



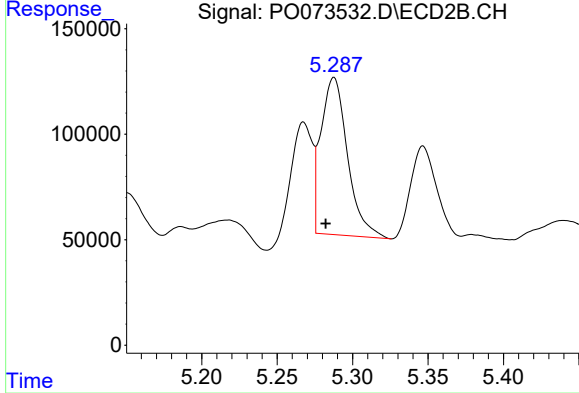
#11 AR-1232-1

R.T.: 4.461 min  
 Delta R.T.: 0.006 min  
 Response: 341284  
 Conc: 300.06 ng/ml



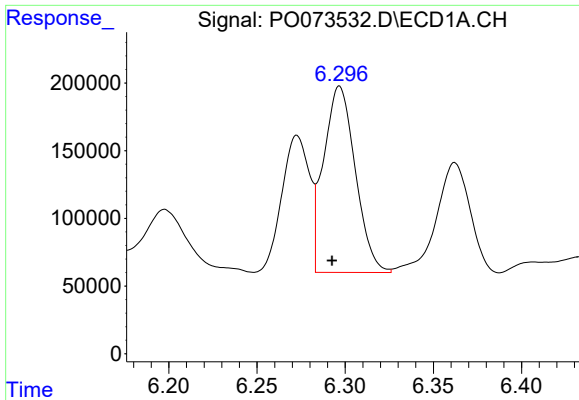
#12 AR-1232-2

R.T.: 5.976 min  
 Delta R.T.: 0.002 min  
 Response: 914663  
 Conc: 961.16 ng/ml



#12 AR-1232-2

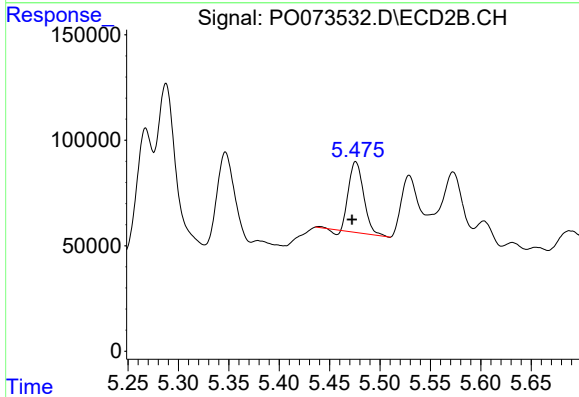
R.T.: 5.288 min  
 Delta R.T.: 0.005 min  
 Response: 914674  
 Conc: 765.29 ng/ml



#13 AR-1232-3

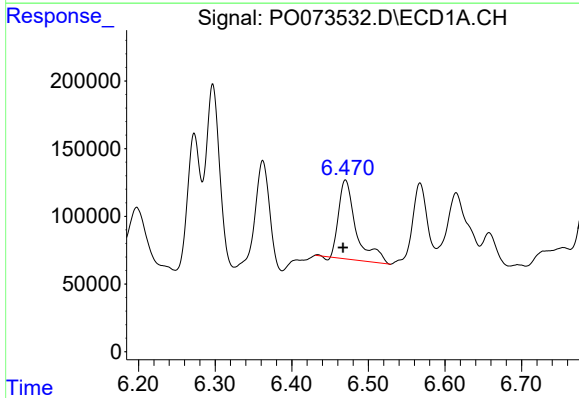
R.T.: 6.297 min  
 Delta R.T.: 0.004 min  
 Response: 1722818  
 Conc: 880.73 ng/ml

Instrument :  
 ECD\_O  
 ClientSampled :



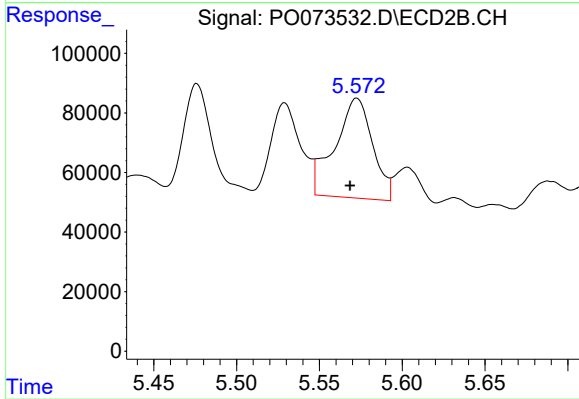
#13 AR-1232-3

R.T.: 5.476 min  
 Delta R.T.: 0.004 min  
 Response: 344307  
 Conc: 548.86 ng/ml



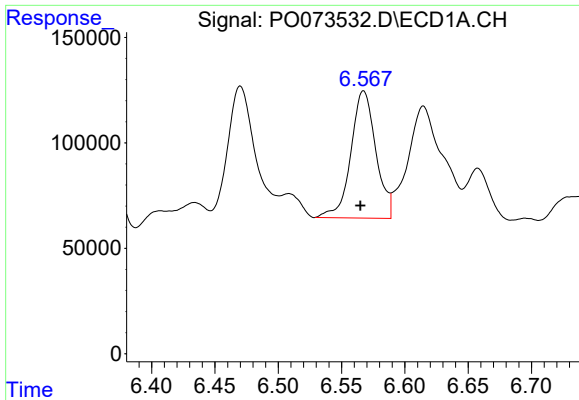
#14 AR-1232-4

R.T.: 6.470 min  
 Delta R.T.: 0.003 min  
 Response: 921773  
 Conc: 932.30 ng/ml



#14 AR-1232-4

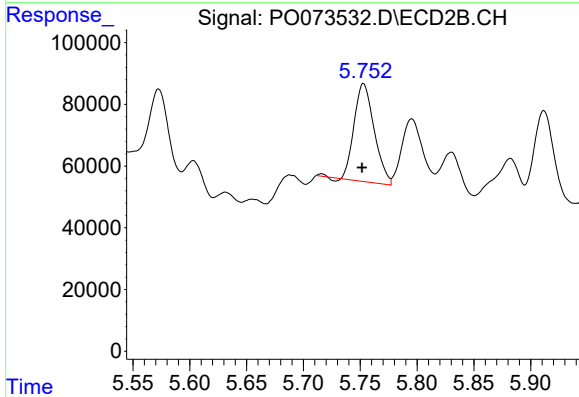
R.T.: 5.573 min  
 Delta R.T.: 0.004 min  
 Response: 531120  
 Conc: 985.14 ng/ml



#15 AR-1232-5

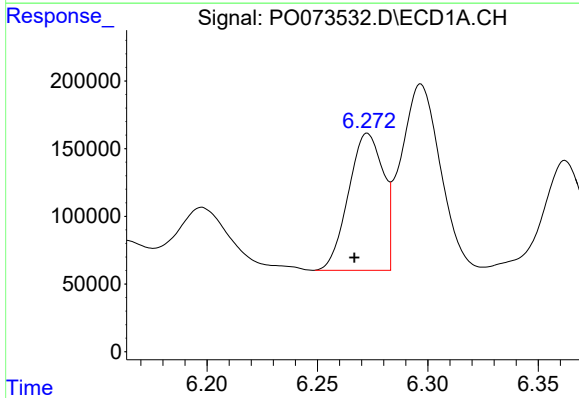
R.T.: 6.567 min  
 Delta R.T.: 0.003 min  
 Response: 829683  
 Conc: 1232.35 ng/ml

Instrument :  
 ECD\_O  
 ClientSampleId :



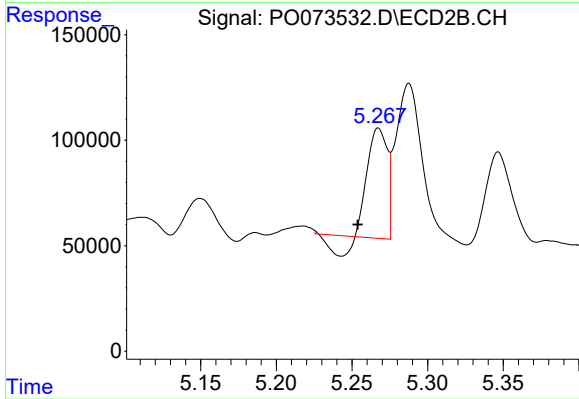
#15 AR-1232-5

R.T.: 5.753 min  
 Delta R.T.: 0.001 min  
 Response: 390733  
 Conc: 661.39 ng/ml



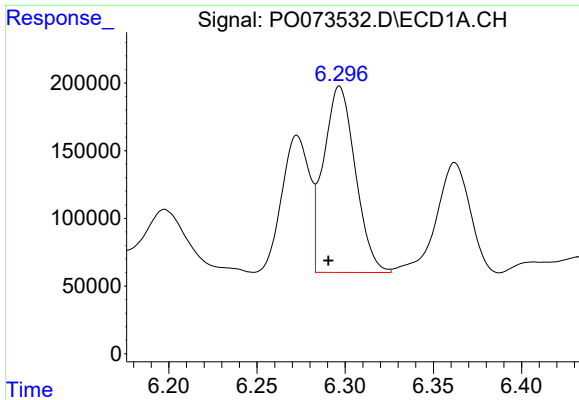
#16 AR-1242-1

R.T.: 6.273 min  
 Delta R.T.: 0.006 min  
 Response: 1106083  
 Conc: 419.37 ng/ml



#16 AR-1242-1

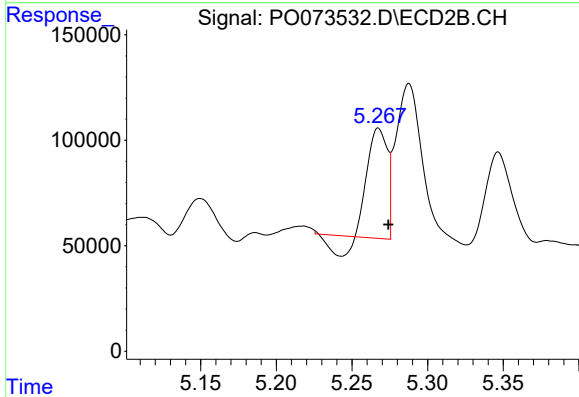
R.T.: 5.268 min  
 Delta R.T.: 0.014 min  
 Response: 410024  
 Conc: 250.70 ng/ml



#17 AR-1242-2

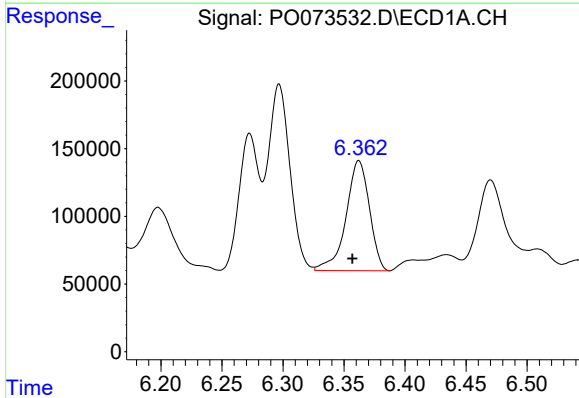
R.T.: 6.297 min  
 Delta R.T.: 0.006 min  
 Response: 1722818  
 Conc: 471.30 ng/ml

Instrument :  
 ECD\_O  
 ClientSampleId :



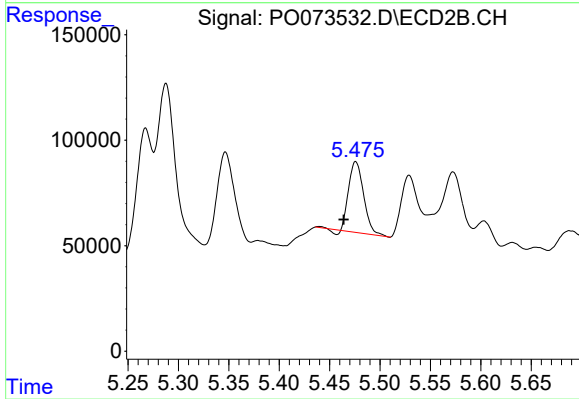
#17 AR-1242-2

R.T.: 5.268 min  
 Delta R.T.: -0.007 min  
 Response: 410024  
 Conc: 181.28 ng/ml



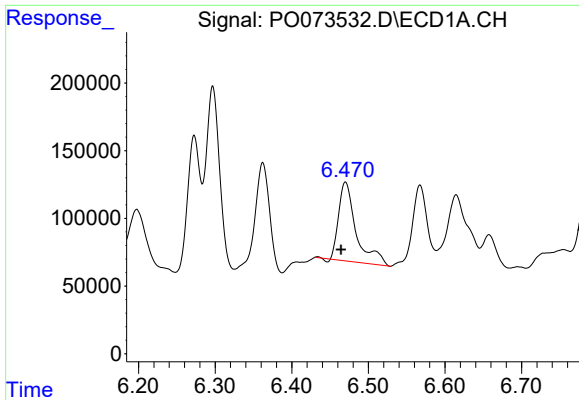
#18 AR-1242-3

R.T.: 6.362 min  
 Delta R.T.: 0.005 min  
 Response: 1086000  
 Conc: 492.45 ng/ml



#18 AR-1242-3

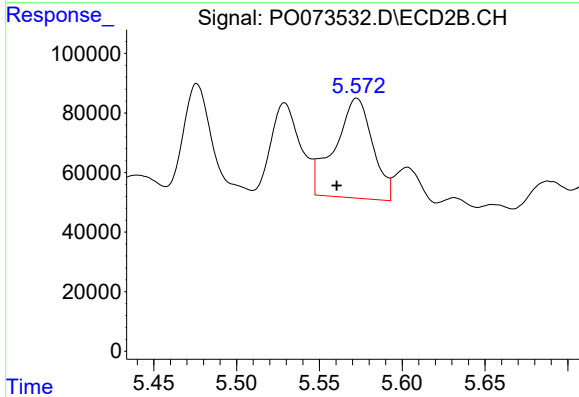
R.T.: 5.476 min  
 Delta R.T.: 0.012 min  
 Response: 344307  
 Conc: 286.78 ng/ml



#19 AR-1242-4

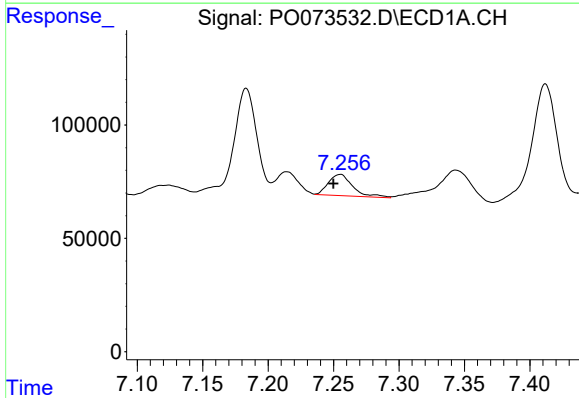
R.T.: 6.470 min  
 Delta R.T.: 0.006 min  
 Response: 921773  
 Conc: 496.60 ng/ml

Instrument :  
 ECD\_O  
 ClientSampleId :



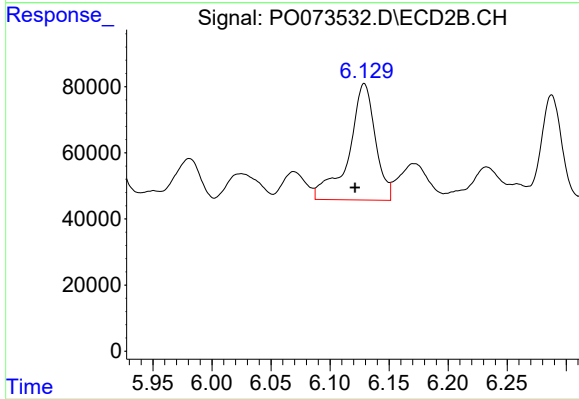
#19 AR-1242-4

R.T.: 5.573 min  
 Delta R.T.: 0.012 min  
 Response: 531120  
 Conc: 483.23 ng/ml



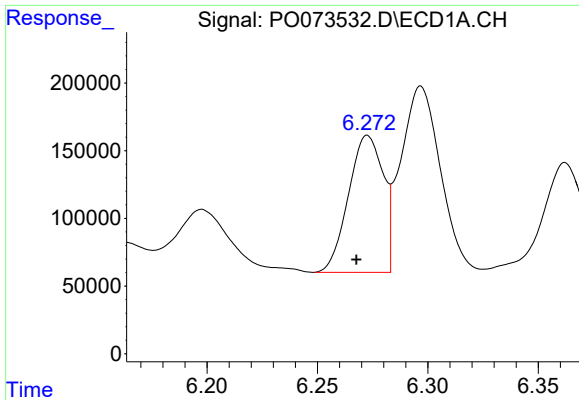
#20 AR-1242-5

R.T.: 7.255 min  
 Delta R.T.: 0.005 min  
 Response: 121636  
 Conc: 57.83 ng/ml



#20 AR-1242-5

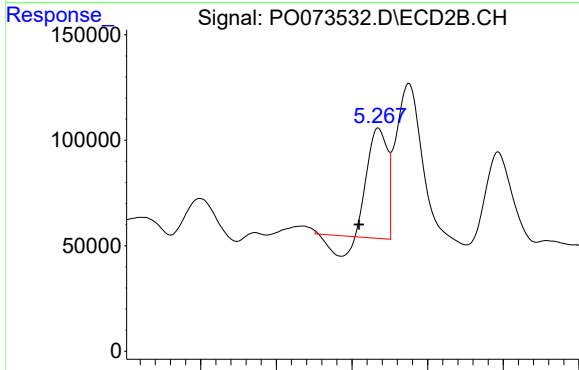
R.T.: 6.129 min  
 Delta R.T.: 0.008 min  
 Response: 550791  
 Conc: 355.72 ng/ml



#21 AR-1248-1

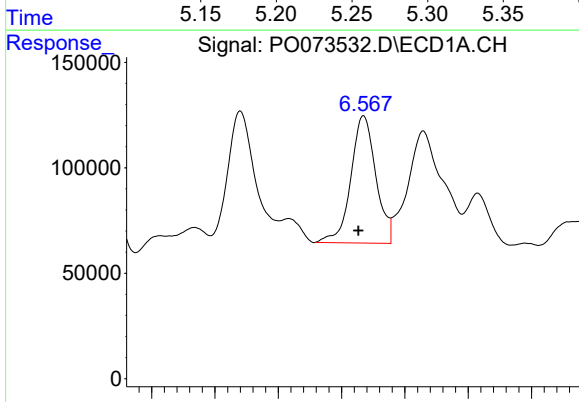
R.T.: 6.273 min  
 Delta R.T.: 0.005 min  
 Response: 1106083  
 Conc: 553.29 ng/ml

Instrument :  
 ECD\_O  
 ClientSampleId :



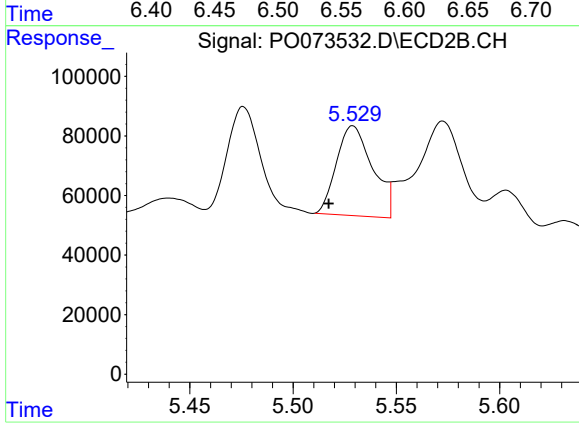
#21 AR-1248-1

R.T.: 5.268 min  
 Delta R.T.: 0.013 min  
 Response: 410024  
 Conc: 326.95 ng/ml



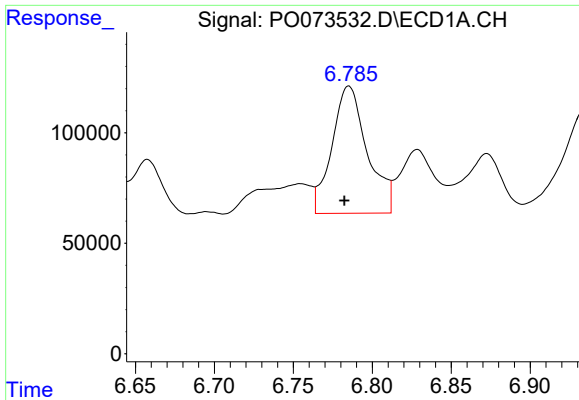
#22 AR-1248-2

R.T.: 6.567 min  
 Delta R.T.: 0.004 min  
 Response: 829683  
 Conc: 320.93 ng/ml



#22 AR-1248-2

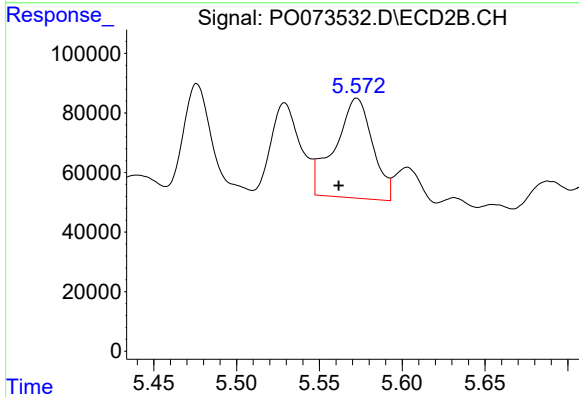
R.T.: 5.529 min  
 Delta R.T.: 0.012 min  
 Response: 367963  
 Conc: 217.58 ng/ml



#23 AR-1248-3

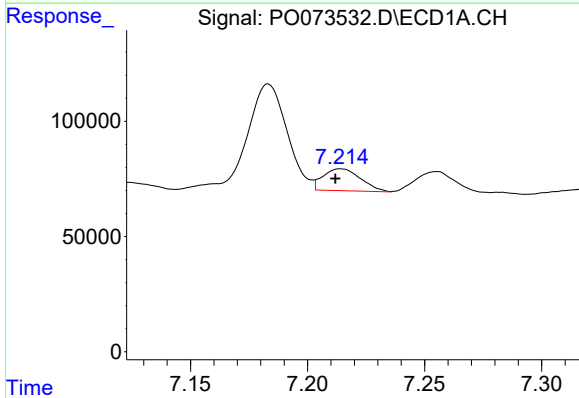
R.T.: 6.785 min  
 Delta R.T.: 0.003 min  
 Response: 895948  
 Conc: 292.36 ng/ml

Instrument :  
 ECD\_O  
 ClientSampleId :



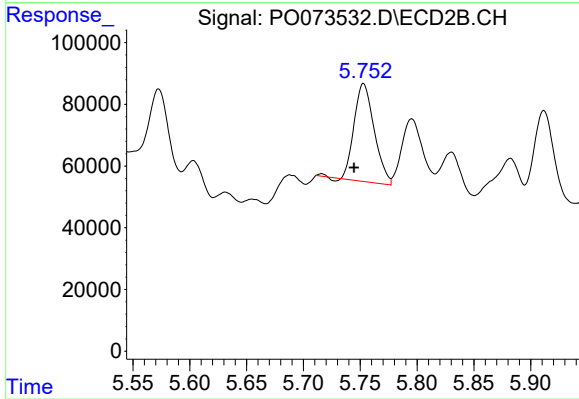
#23 AR-1248-3

R.T.: 5.573 min  
 Delta R.T.: 0.011 min  
 Response: 531120  
 Conc: 311.24 ng/ml



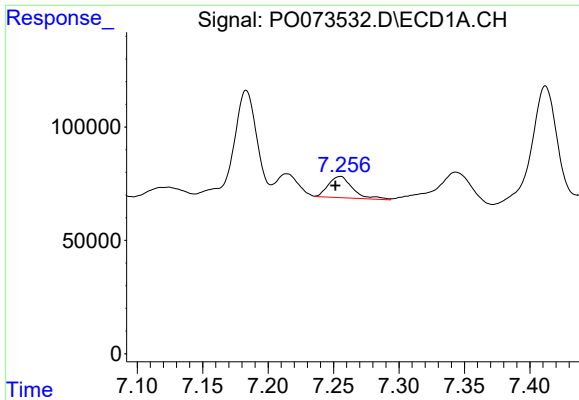
#24 AR-1248-4

R.T.: 7.214 min  
 Delta R.T.: 0.002 min  
 Response: 106246  
 Conc: 28.48 ng/ml



#24 AR-1248-4

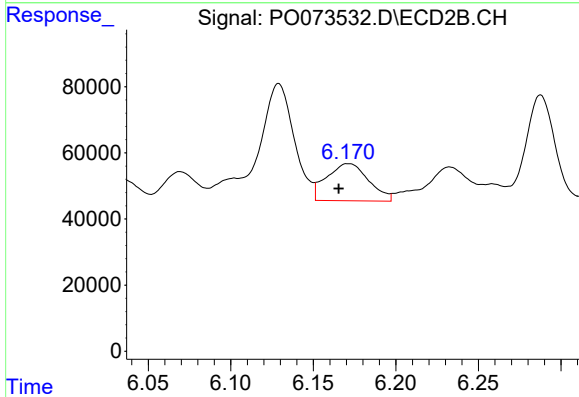
R.T.: 5.753 min  
 Delta R.T.: 0.008 min  
 Response: 390733  
 Conc: 190.07 ng/ml



#25 AR-1248-5

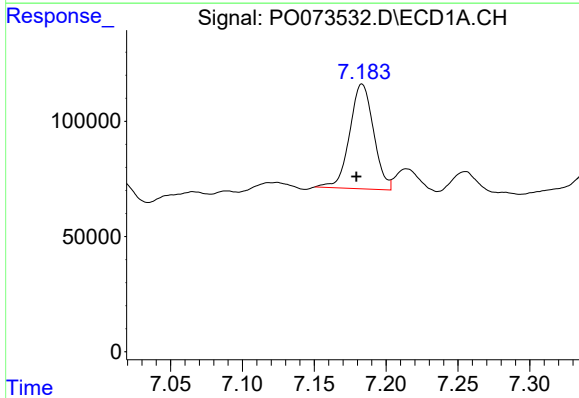
R.T.: 7.255 min  
 Delta R.T.: 0.003 min  
 Response: 121636  
 Conc: 34.00 ng/ml

Instrument :  
 ECD\_O  
 ClientSampleId :



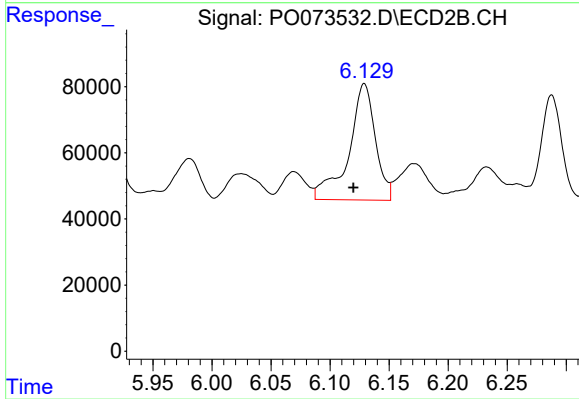
#25 AR-1248-5

R.T.: 6.171 min  
 Delta R.T.: 0.006 min  
 Response: 198839  
 Conc: 89.55 ng/ml



#26 AR-1254-1

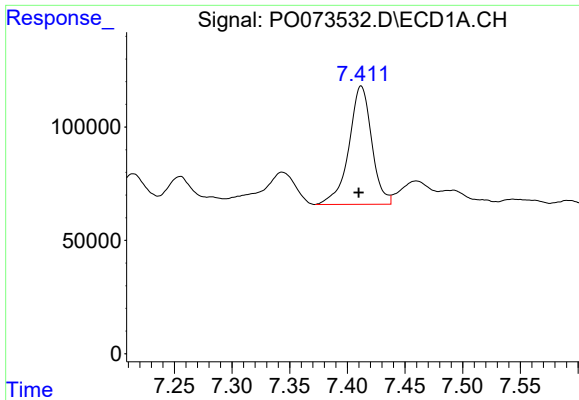
R.T.: 7.183 min  
 Delta R.T.: 0.004 min  
 Response: 526215  
 Conc: 152.16 ng/ml



#26 AR-1254-1

R.T.: 6.129 min  
 Delta R.T.: 0.009 min  
 Response: 550791  
 Conc: 176.89 ng/ml

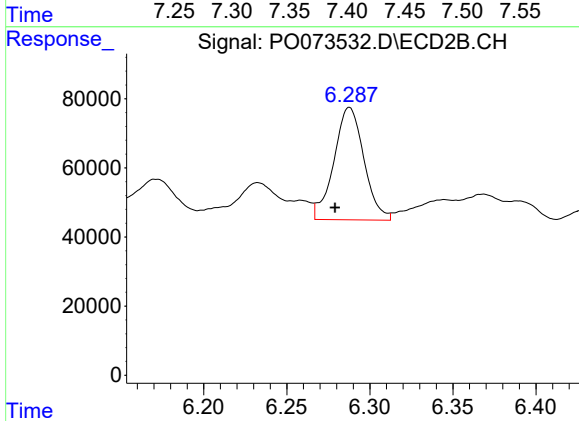




#27 AR-1254-2

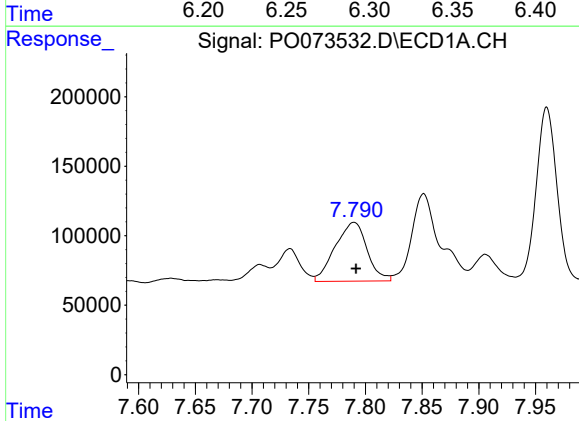
R.T.: 7.412 min  
 Delta R.T.: 0.002 min  
 Response: 718019  
 Conc: 131.80 ng/ml

Instrument :  
 ECD\_O  
 ClientSampleId :



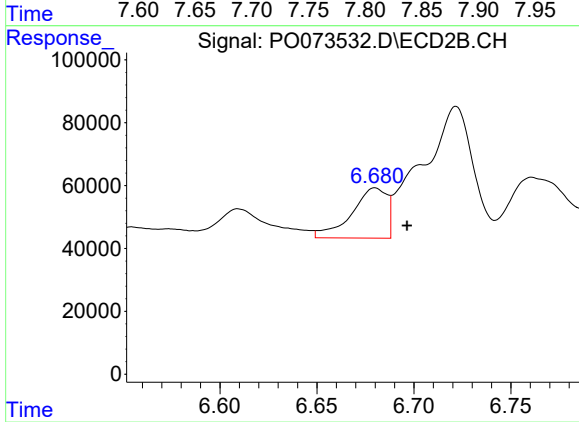
#27 AR-1254-2

R.T.: 6.288 min  
 Delta R.T.: 0.009 min  
 Response: 409696  
 Conc: 150.07 ng/ml



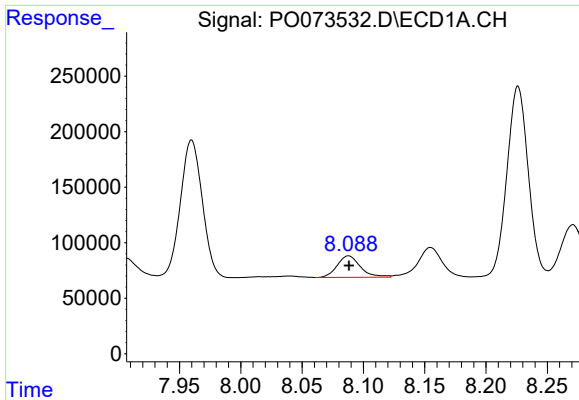
#28 AR-1254-3

R.T.: 7.790 min  
 Delta R.T.: -0.002 min  
 Response: 828910  
 Conc: 146.26 ng/ml



#28 AR-1254-3

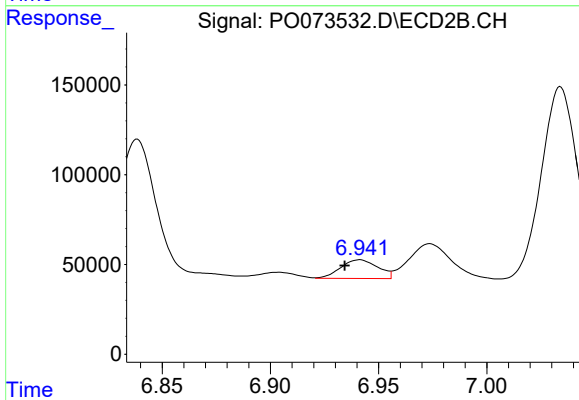
R.T.: 6.680 min  
 Delta R.T.: -0.016 min  
 Response: 202702  
 Conc: 47.93 ng/ml



#29 AR-1254-4

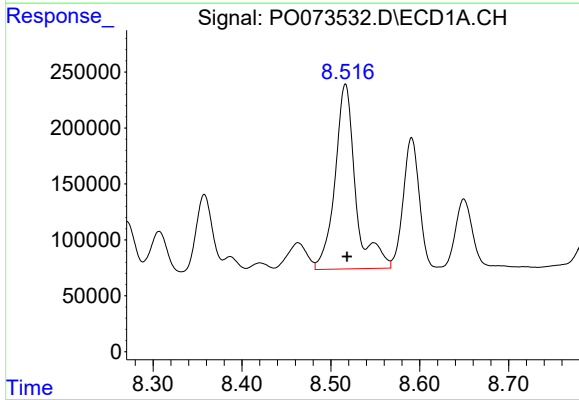
R.T.: 8.088 min  
 Delta R.T.: 0.000 min  
 Response: 255390  
 Conc: 52.79 ng/ml

Instrument :  
 ECD\_O  
 ClientSampled :



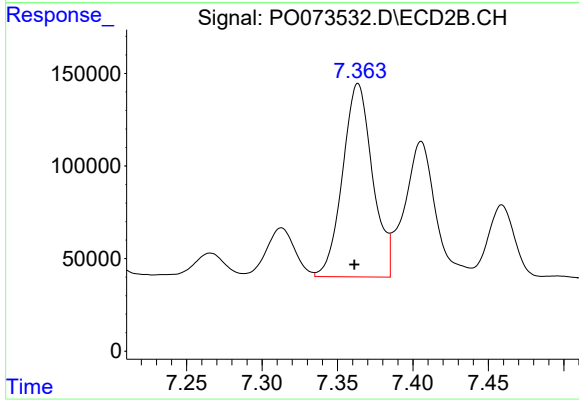
#29 AR-1254-4

R.T.: 6.941 min  
 Delta R.T.: 0.007 min  
 Response: 123751  
 Conc: 42.86 ng/ml



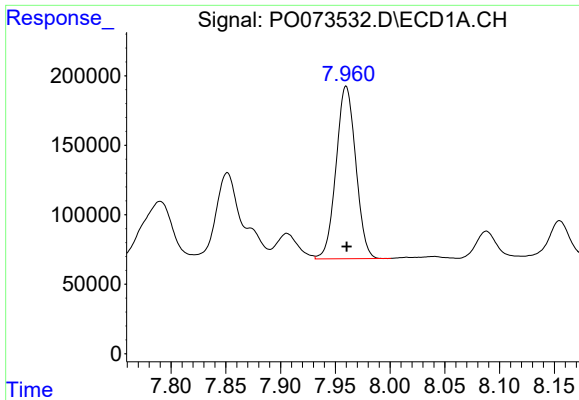
#30 AR-1254-5

R.T.: 8.516 min  
 Delta R.T.: -0.002 min  
 Response: 2663776  
 Conc: 559.57 ng/ml



#30 AR-1254-5

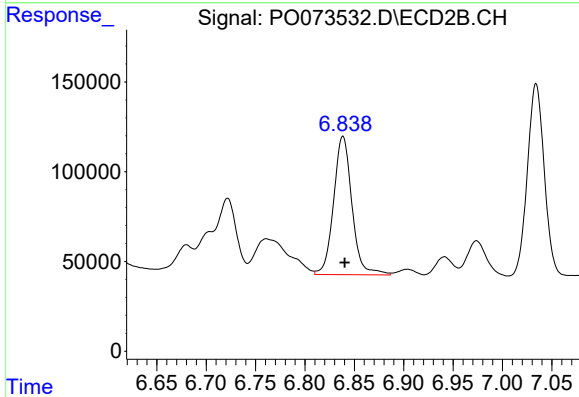
R.T.: 7.364 min  
 Delta R.T.: 0.002 min  
 Response: 1443325  
 Conc: 390.81 ng/ml



#31 AR-1260-1

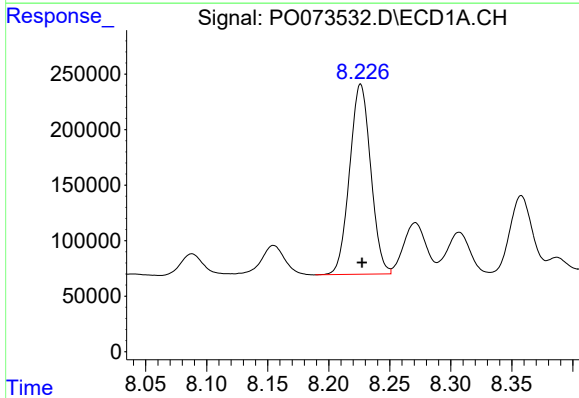
R.T.: 7.960 min  
 Delta R.T.: 0.000 min  
 Response: 1551843  
 Conc: 384.57 ng/ml

Instrument :  
 ECD\_O  
 ClientSampled :



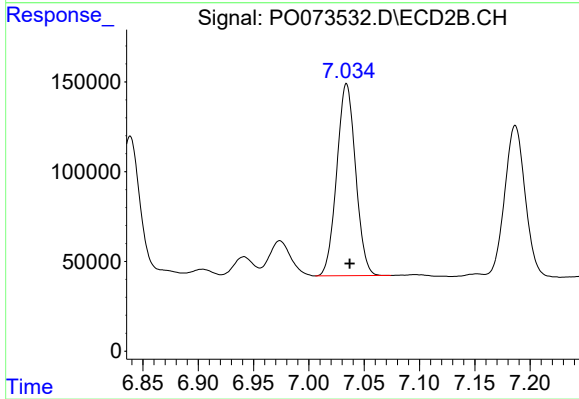
#31 AR-1260-1

R.T.: 6.838 min  
 Delta R.T.: -0.002 min  
 Response: 997586  
 Conc: 371.29 ng/ml



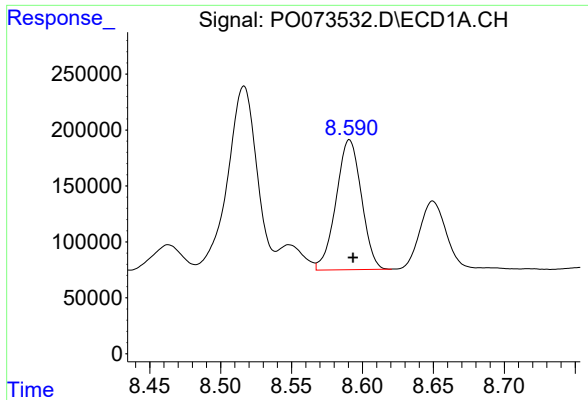
#32 AR-1260-2

R.T.: 8.226 min  
 Delta R.T.: -0.001 min  
 Response: 2063625  
 Conc: 375.49 ng/ml



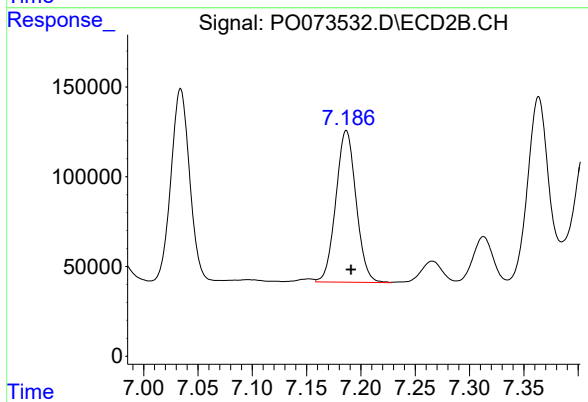
#32 AR-1260-2

R.T.: 7.034 min  
 Delta R.T.: -0.003 min  
 Response: 1267745  
 Conc: 380.08 ng/ml

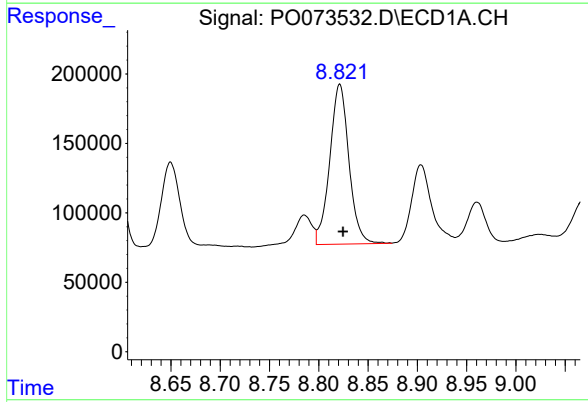


#33 AR-1260-3  
 R.T.: 8.591 min  
 Delta R.T.: -0.003 min  
 Response: 1444377  
 Conc: 325.49 ng/ml

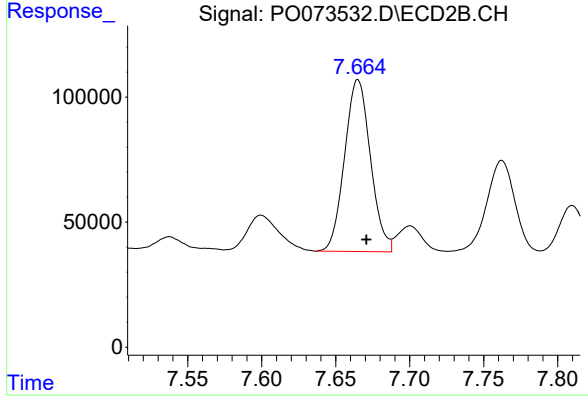
Instrument :  
 ECD\_O  
 ClientSampled :



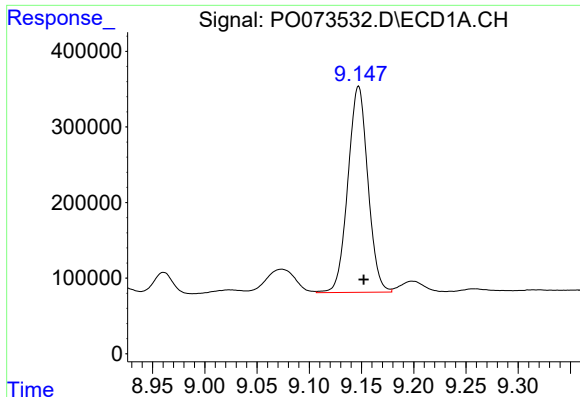
#33 AR-1260-3  
 R.T.: 7.187 min  
 Delta R.T.: -0.004 min  
 Response: 1093879  
 Conc: 354.10 ng/ml



#34 AR-1260-4  
 R.T.: 8.821 min  
 Delta R.T.: -0.003 min  
 Response: 1562152  
 Conc: 361.93 ng/ml



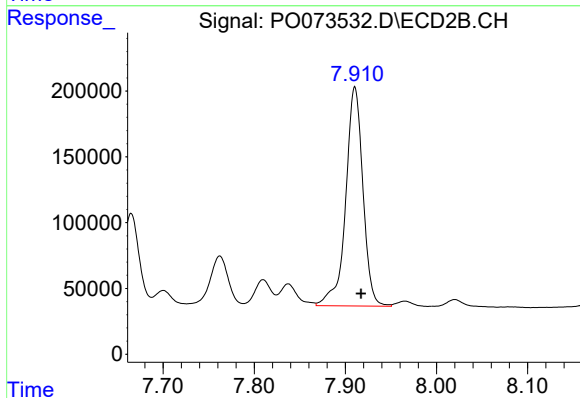
#34 AR-1260-4  
 R.T.: 7.665 min  
 Delta R.T.: -0.006 min  
 Response: 837177  
 Conc: 340.21 ng/ml



#35 AR-1260-5

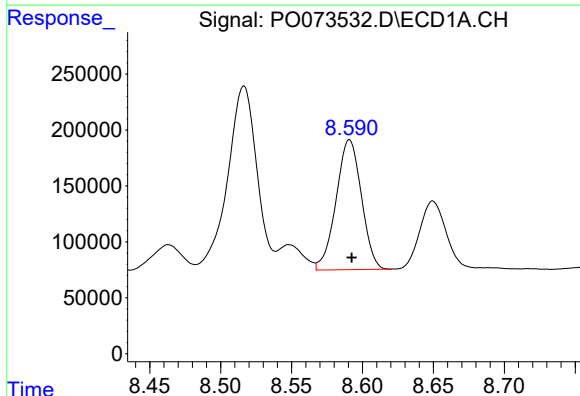
R.T.: 9.147 min  
 Delta R.T.: -0.005 min  
 Response: 3628325  
 Conc: 367.43 ng/ml

Instrument :  
 ECD\_O  
 ClientSampled :



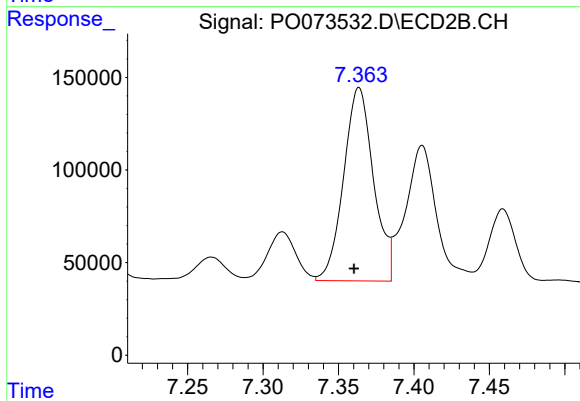
#35 AR-1260-5

R.T.: 7.910 min  
 Delta R.T.: -0.007 min  
 Response: 2190653  
 Conc: 353.61 ng/ml



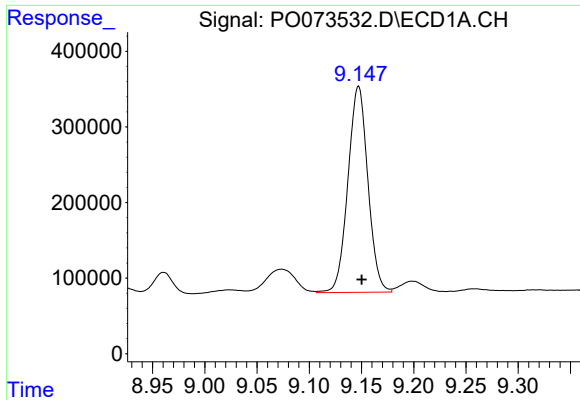
#36 AR-1262-1

R.T.: 8.591 min  
 Delta R.T.: -0.002 min  
 Response: 1444377  
 Conc: 231.34 ng/ml



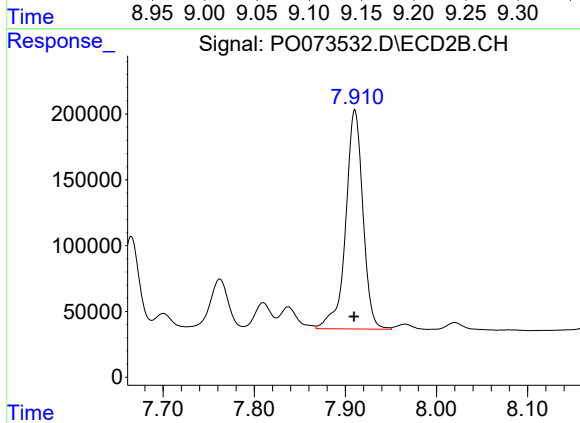
#36 AR-1262-1

R.T.: 7.364 min  
 Delta R.T.: 0.003 min  
 Response: 1443325  
 Conc: 744.77 ng/ml

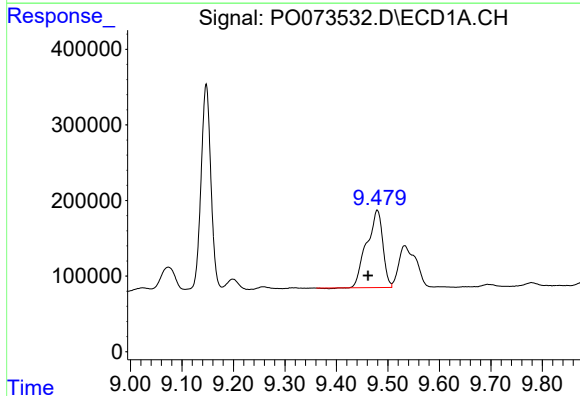


#37 AR-1262-2  
 R.T.: 9.147 min  
 Delta R.T.: -0.003 min  
 Response: 3628325  
 Conc: 335.42 ng/ml

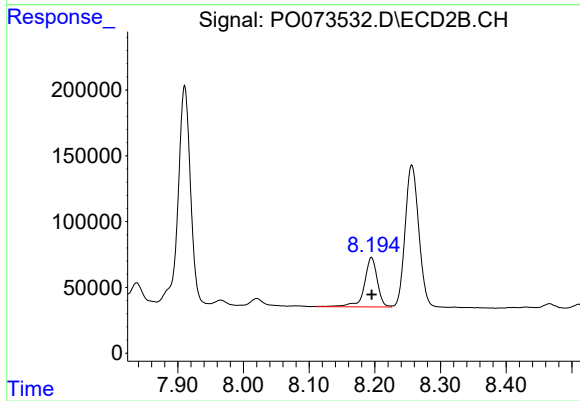
Instrument :  
 ECD\_O  
 ClientSampled :



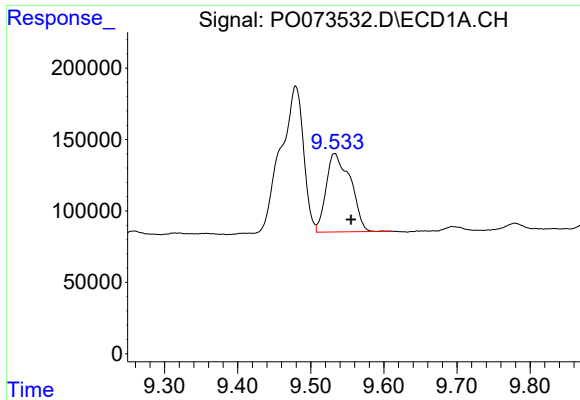
#37 AR-1262-2  
 R.T.: 7.910 min  
 Delta R.T.: 0.000 min  
 Response: 2190653  
 Conc: 334.12 ng/ml



#38 AR-1262-3  
 R.T.: 9.479 min  
 Delta R.T.: 0.018 min  
 Response: 2216623  
 Conc: 301.99 ng/ml

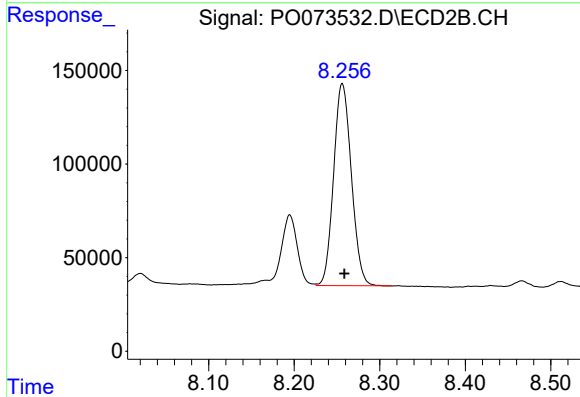


#38 AR-1262-3  
 R.T.: 8.195 min  
 Delta R.T.: 0.000 min  
 Response: 515558  
 Conc: 191.08 ng/ml

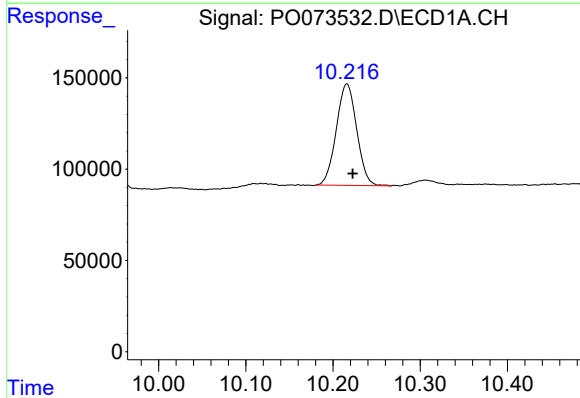


#39 AR-1262-4  
 R.T.: 9.533 min  
 Delta R.T.: -0.022 min  
 Response: 1273166  
 Conc: 231.36 ng/ml

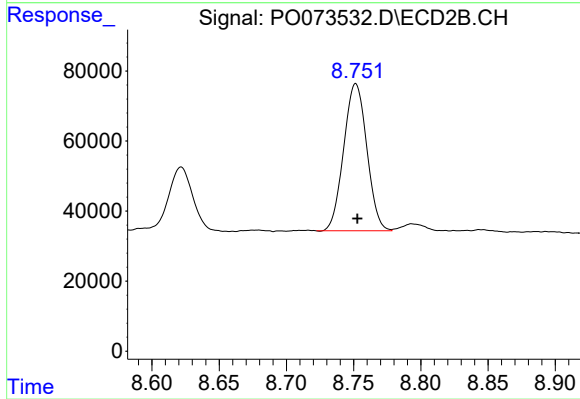
Instrument :  
 ECD\_O  
 ClientSampleId :



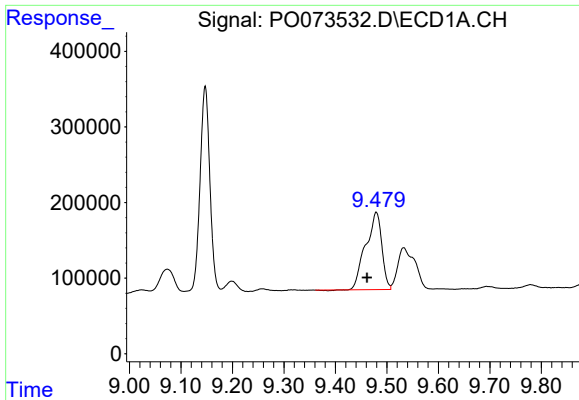
#39 AR-1262-4  
 R.T.: 8.256 min  
 Delta R.T.: -0.002 min  
 Response: 1557267  
 Conc: 326.15 ng/ml



#40 AR-1262-5  
 R.T.: 10.216 min  
 Delta R.T.: -0.007 min  
 Response: 904676  
 Conc: 232.42 ng/ml



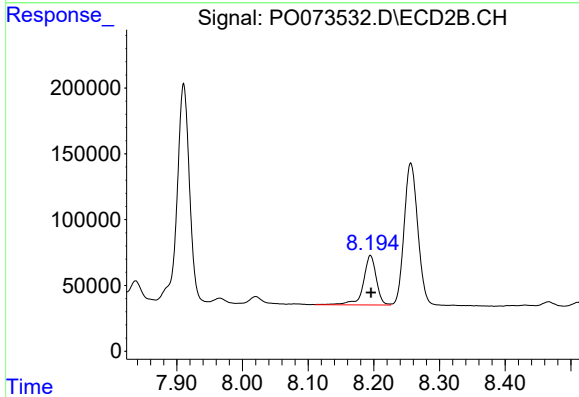
#40 AR-1262-5  
 R.T.: 8.752 min  
 Delta R.T.: -0.001 min  
 Response: 502186  
 Conc: 219.57 ng/ml



#41 AR-1268-1

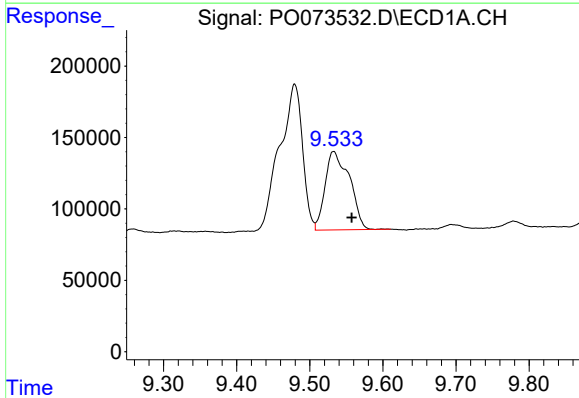
R.T.: 9.479 min  
Delta R.T.: 0.018 min  
Response: 2216623  
Conc: 158.69 ng/ml

Instrument :  
ECD\_O  
ClientSampled :



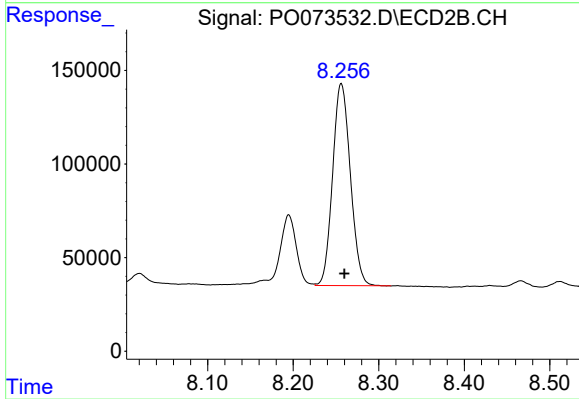
#41 AR-1268-1

R.T.: 8.195 min  
Delta R.T.: 0.000 min  
Response: 515558  
Conc: 63.29 ng/ml



#42 AR-1268-2

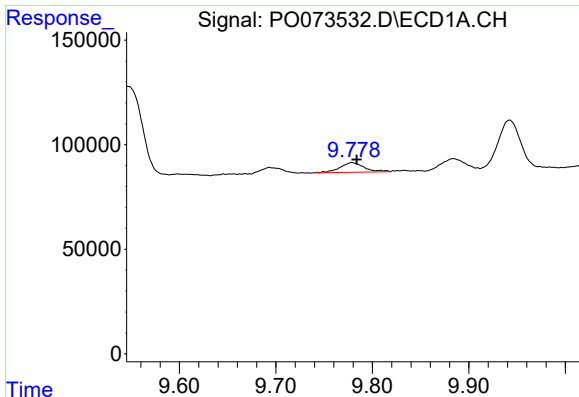
R.T.: 9.533 min  
Delta R.T.: -0.025 min  
Response: 1273166  
Conc: 104.80 ng/ml



#42 AR-1268-2

R.T.: 8.256 min  
Delta R.T.: -0.004 min  
Response: 1557267  
Conc: 213.22 ng/ml

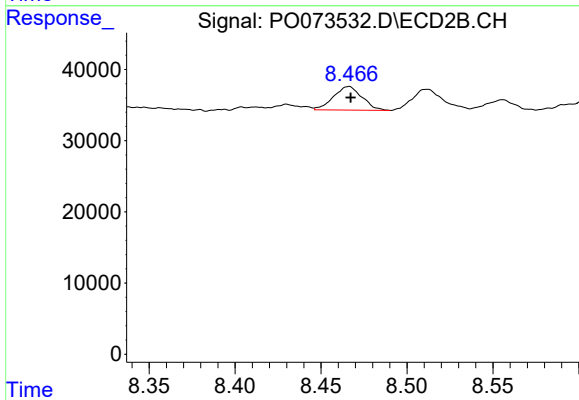




#43 AR-1268-3

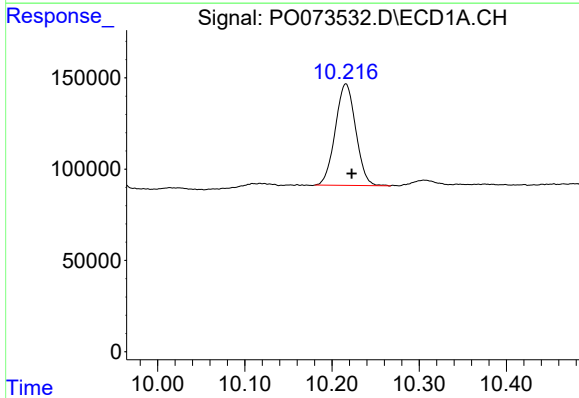
R.T.: 9.779 min  
 Delta R.T.: -0.005 min  
 Response: 80416  
 Conc: 7.63 ng/ml

Instrument :  
 ECD\_O  
 ClientSampleId :



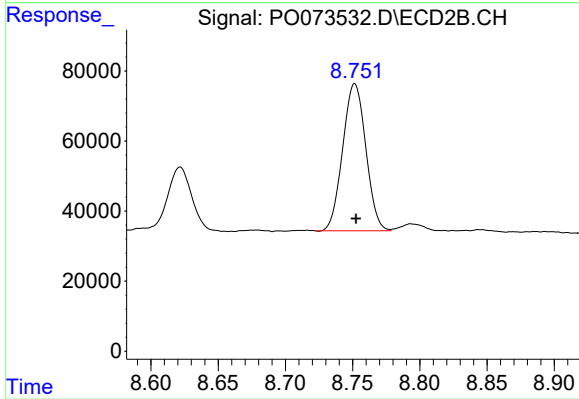
#43 AR-1268-3

R.T.: 8.466 min  
 Delta R.T.: -0.001 min  
 Response: 38083  
 Conc: 6.09 ng/ml



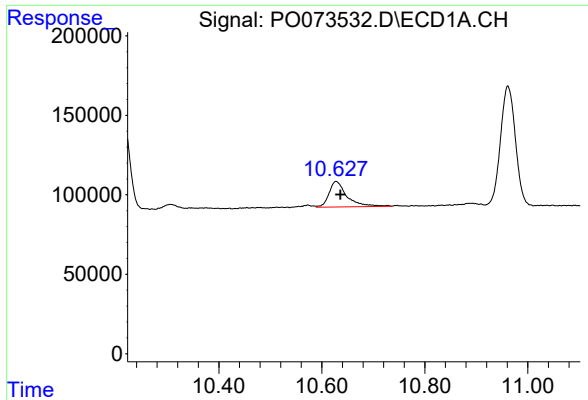
#44 AR-1268-4

R.T.: 10.216 min  
 Delta R.T.: -0.007 min  
 Response: 904676  
 Conc: 200.54 ng/ml



#44 AR-1268-4

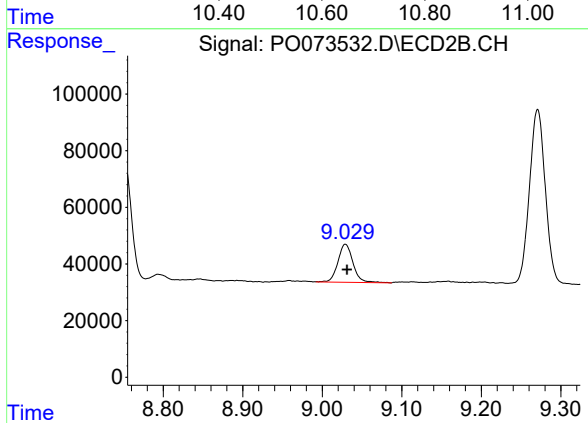
R.T.: 8.752 min  
 Delta R.T.: -0.001 min  
 Response: 502186  
 Conc: 187.48 ng/ml



#45 AR-1268-5

R.T.: 10.628 min  
Delta R.T.: -0.008 min  
Response: 390528  
Conc: 12.27 ng/ml

Instrument :  
ECD\_O  
ClientSampleId :



#45 AR-1268-5

R.T.: 9.029 min  
Delta R.T.: -0.002 min  
Response: 177654  
Conc: 9.74 ng/ml