

Data Path : Z:\pestpcbsrv\HPCHEM1\ECD_0\Data\PO112420\
 Data File : PO073537.D
 Signal(s) : Signal #1: ECD1A.CH Signal #2: ECD2B.CH
 Acq On : 24 Nov 2020 22:55
 Operator : DD\AJ
 Sample : AR1660CCC500
 Misc :
 ALS Vial : 3 Sample Multiplier: 1

Instrument :
 ECD_0
 ClientSampled :

Integration File signal 1: autoint1.e
 Integration File signal 2: autoint2.e
 Quant Time: Nov 25 10:40:12 2020
 Quant Method : Z:\pestpcbsrv\HPCHEM1\ECD_0\methods\PO112320.M
 Quant Title : GC EXTRACTABLES
 QLast Update : Wed Nov 25 10:04:26 2020
 Response via : Initial Calibration
 Integrator: ChemStation 6890 Scale Mode: Small noise peaks clipped

Volume Inj. : 2 µl
 Signal #1 Phase : ZB-MR1 Signal #2 Phase: ZB-MR2
 Signal #1 Info : 30Mx0.32mmx 0.50µ Signal #2 Info : 30M x 0.32mm x 0.25µm

Compound	RT#1	RT#2	Resp#1	Resp#2	ng/ml	ng/ml
System Monitoring Compounds						
1) SA Tetrachlo...	4.945	4.009	4551109	2521953	54.406	51.439
2) SA Decachlor...	10.968	9.274	2982093	1693670	36.168	36.939
Target Compounds						
3) L1 AR-1016-1	6.267	5.257	1363981	1008204	414.206	494.893
4) L1 AR-1016-2	6.291	5.277	1878459	1387112	408.053	495.972
5) L1 AR-1016-3	6.357	5.466	1123723	744765	410.385	500.840
6) L1 AR-1016-4	6.465	5.518	947592	604470	415.168	508.616
7) L1 AR-1016-5	6.780	5.745	1020889	659598	454.062	438.183
8) L2 AR-1221-1	5.190	4.262	152606	98985	153.844	175.625
9) L2 AR-1221-2	5.295	4.361	223291	139134	317.478	344.189
10) L2 AR-1221-3	5.381	4.450	840019	492643	374.657	370.936
11) L3 AR-1232-1	5.381	4.450	840019	492643	455.176	433.142
12) L3 AR-1232-2	5.972	5.277	991031	1387112	1041.407	1160.578
13) L3 AR-1232-3	6.291	5.466	1878459	744765	960.294	1187.223
14) L3 AR-1232-4	6.465	5.563	947592	702452	958.412	1302.931 #
15) L3 AR-1232-5	6.563	5.745	785663	659598	1166.969	1116.493
16) L4 AR-1242-1	6.267	5.257	1363981	1008204	517.157	616.441
17) L4 AR-1242-2	6.291	5.277	1878459	1387112	513.881	613.272
18) L4 AR-1242-3	6.357	5.466	1123723	744765	509.557	620.323
19) L4 AR-1242-4	6.465	5.563	947592	702452	510.514	639.116 #
20) L4 AR-1242-5	7.249	6.122	249813	621797	118.769	401.580 #
21) L5 AR-1248-1	6.267	5.257	1363981	1008204	682.296	803.940
22) L5 AR-1248-2	6.563	5.518	785663	604470	303.907	357.434
23) L5 AR-1248-3	6.780	5.563	1020889	702452	333.127	411.638
24) L5 AR-1248-4	7.210	5.745	232958	659598	62.451	320.864 #
25) L5 AR-1248-5	7.249	6.165	249813	147554	69.820	66.450
26) L6 AR-1254-1	7.179	6.122	747825	621797	216.238	199.690
27) L6 AR-1254-2	7.409	6.281	762542	554278	139.968	203.032 #
28) L6 AR-1254-3	7.792	6.717f	457431	955536	80.715	225.936 #
29) L6 AR-1254-4	8.087	6.936	286522	170253	59.222	58.971
30) L6 AR-1254-5	8.516	7.362	2184601	1455574	458.915	394.126
31) L7 AR-1260-1	7.959	6.835	1519733	1206967	376.615	449.224
32) L7 AR-1260-2	8.225	7.031	2046529	1478279	372.376	443.198
33) L7 AR-1260-3	8.591	7.185	1609933	1253294	362.799	405.707
34) L7 AR-1260-4	8.822	7.664	1593372	1004532	369.164	408.214
35) L7 AR-1260-5	9.149	7.911	3605259	2407152	365.094	388.560
36) L8 AR-1262-1	8.591	7.362	1609933	1455574	257.862	751.093 #
37) L8 AR-1262-2	9.149	7.911	3605259	2407152	333.287	367.144
38) L8 AR-1262-3	9.462	8.196	839083	578363	114.317	214.355 #
39) L8 AR-1262-4	9.536f	8.258	1466162	1647297	266.428	345.004 #
40) L8 AR-1262-5	10.221	8.753	1076484	614843	276.562	268.832
41) L9 AR-1268-1	9.462	8.196	839083	578363	60.070	70.997

Data Path : Z:\pestpcbsrv\HPCHEM1\ECD_0\Data\PO112420\
 Data File : PO073537.D
 Signal(s) : Signal #1: ECD1A.CH Signal #2: ECD2B.CH
 Acq On : 24 Nov 2020 22:55
 Operator : DD\AJ
 Sample : AR1660CCC500
 Misc :
 ALS Vial : 3 Sample Multiplier: 1

Instrument :
 ECD_0
 ClientSampleId :

Integration File signal 1: autoint1.e
 Integration File signal 2: autoint2.e
 Quant Time: Nov 25 10:40:12 2020
 Quant Method : Z:\pestpcbsrv\HPCHEM1\ECD_0\methods\PO112320.M
 Quant Title : GC EXTRACTABLES
 QLast Update : Wed Nov 25 10:04:26 2020
 Response via : Initial Calibration
 Integrator: ChemStation 6890 Scale Mode: Small noise peaks clipped

Volume Inj. : 2 µl
 Signal #1 Phase : ZB-MR1 Signal #2 Phase: ZB-MR2
 Signal #1 Info : 30Mx0.32mmx 0.50µ Signal #2 Info : 30M x 0.32mm x 0.25µm

	Compound	RT#1	RT#2	Resp#1	Resp#2	ng/ml	ng/ml
42)	L9 AR-1268-2	9.536f	8.258	1466162	1647297	120.689	225.542 #
43)	L9 AR-1268-3	9.782	8.467	62175	31847	5.902	5.092
44)	L9 AR-1268-4	10.221	8.753	1076484	614843	238.622	229.539
45)	L9 AR-1268-5	10.633	9.032	303443	176910	9.534	9.698

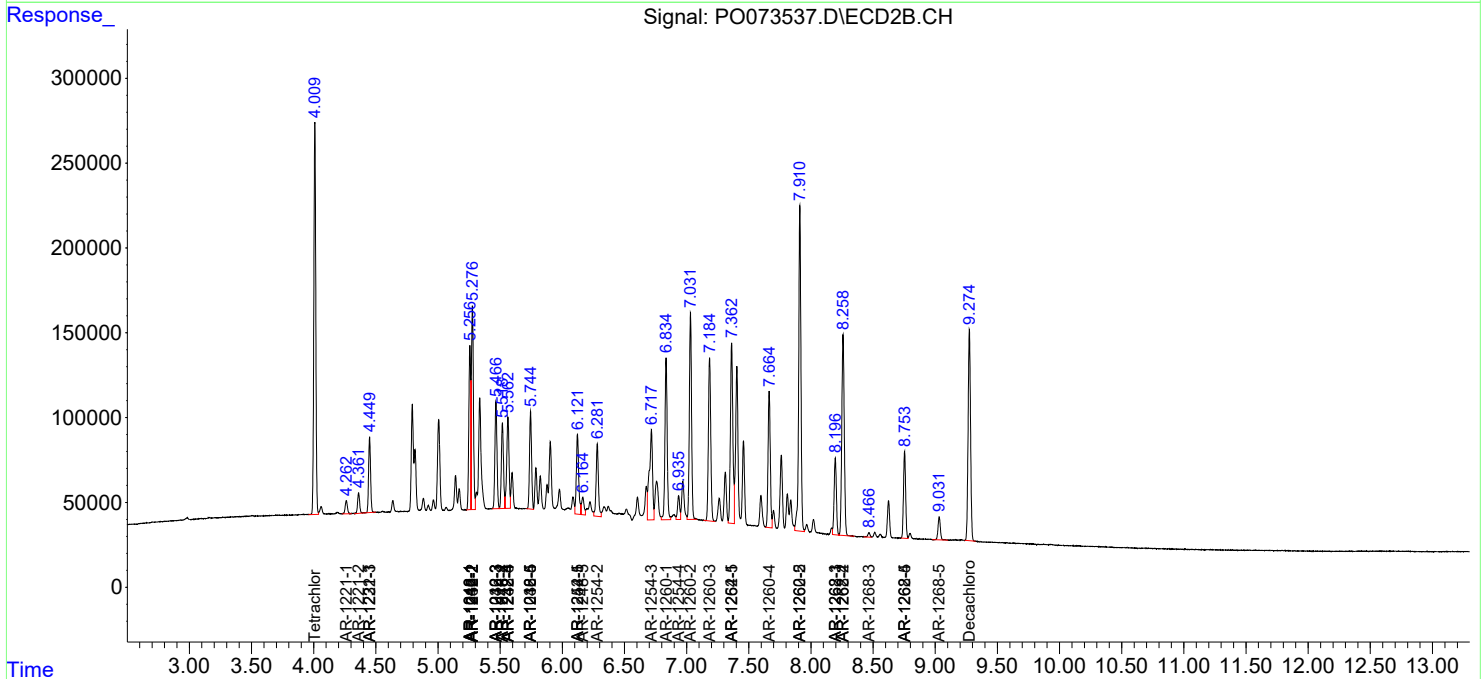
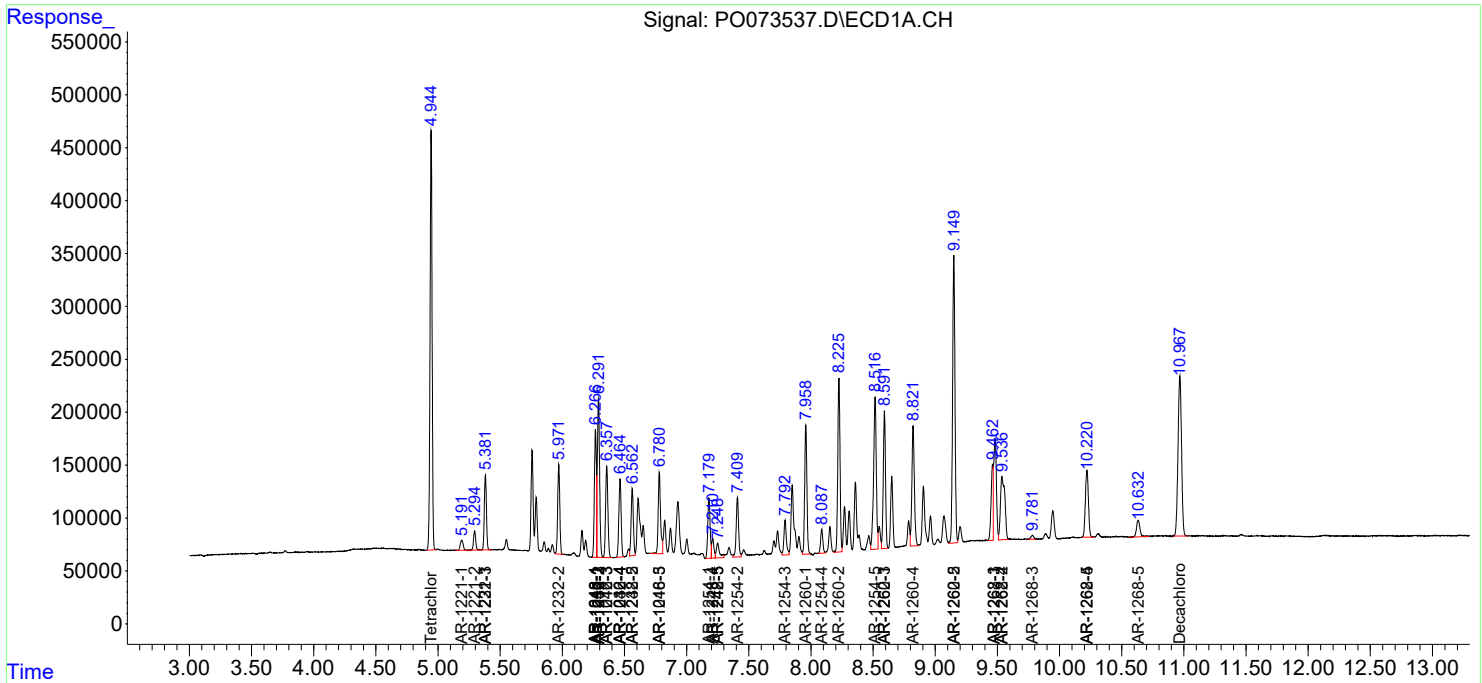
(f)=RT Delta > 1/2 Window (#)=Amounts differ by > 25% (m)=manual int.

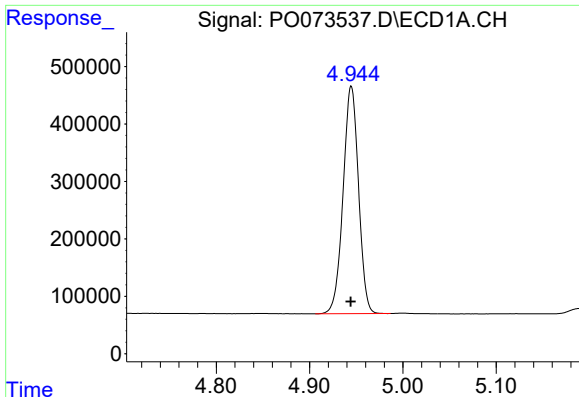
Data Path : Z:\pestpcbsrv\HPCHEM1\ECD_0\Data\PO112420\
 Data File : PO073537.D
 Signal(s) : Signal #1: ECD1A.CH Signal #2: ECD2B.CH
 Acq On : 24 Nov 2020 22:55
 Operator : DD\AJ
 Sample : AR1660CCC500
 Misc :
 ALS Vial : 3 Sample Multiplier: 1

Instrument :
 ECD_O
 ClientSampled :

Integration File signal 1: autoint1.e
 Integration File signal 2: autoint2.e
 Quant Time: Nov 25 10:40:12 2020
 Quant Method : Z:\pestpcbsrv\HPCHEM1\ECD_0\methods\PO112320.M
 Quant Title : GC EXTRACTABLES
 QLast Update : Wed Nov 25 10:04:26 2020
 Response via : Initial Calibration
 Integrator: ChemStation 6890 Scale Mode: Small noise peaks clipped

Volume Inj. : 2 µl
 Signal #1 Phase : ZB-MR1 Signal #2 Phase: ZB-MR2
 Signal #1 Info : 30Mx0.32mmx 0.50µ Signal #2 Info : 30M x 0.32mm x 0.25µm

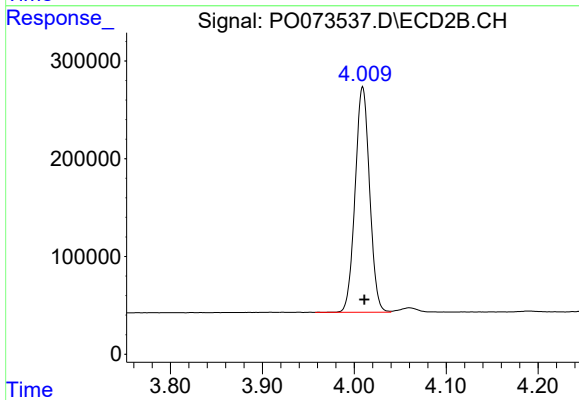




#1 Tetrachloro-m-xylene

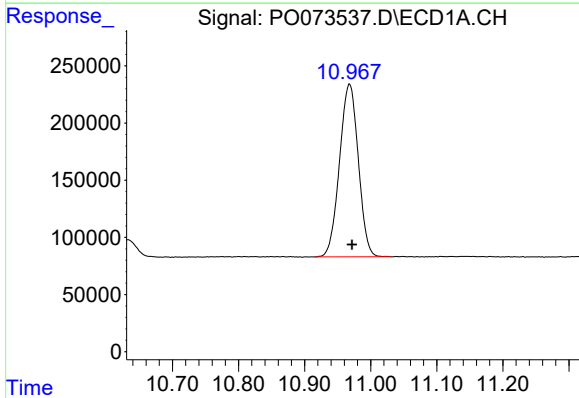
R.T.: 4.945 min
 Delta R.T.: 0.000 min
 Response: 4551109
 Conc: 54.41 ng/ml

Instrument :
 ECD_O
 ClientSampleId :



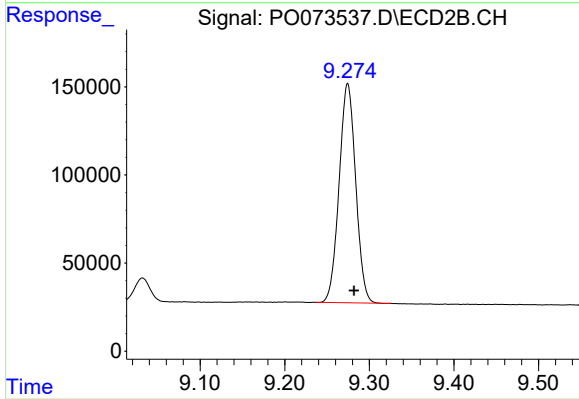
#1 Tetrachloro-m-xylene

R.T.: 4.009 min
 Delta R.T.: -0.002 min
 Response: 2521953
 Conc: 51.44 ng/ml



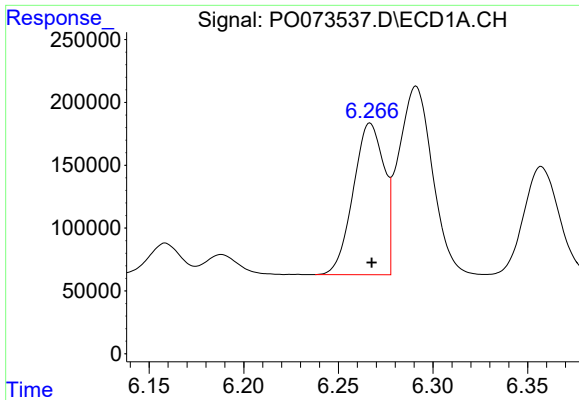
#2 Decachlorobiphenyl

R.T.: 10.968 min
 Delta R.T.: -0.004 min
 Response: 2982093
 Conc: 36.17 ng/ml



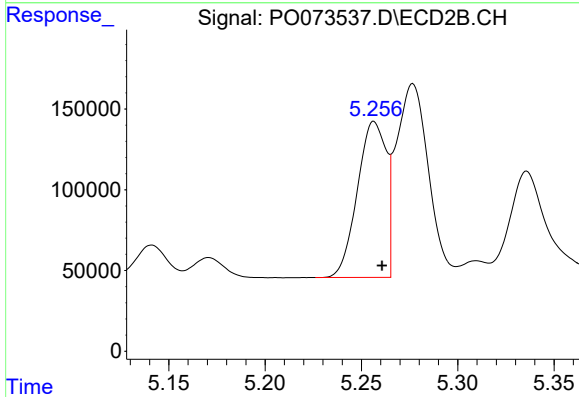
#2 Decachlorobiphenyl

R.T.: 9.274 min
 Delta R.T.: -0.008 min
 Response: 1693670
 Conc: 36.94 ng/ml

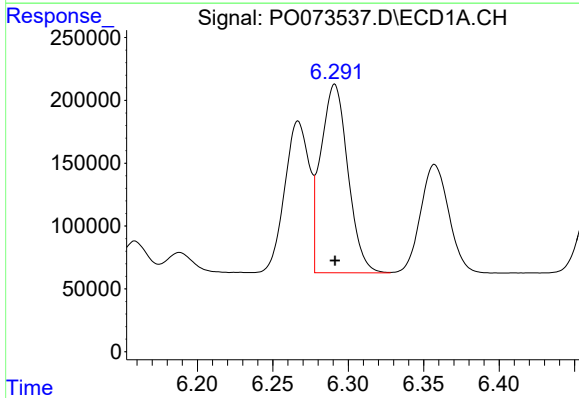


#3 AR-1016-1
 R.T.: 6.267 min
 Delta R.T.: 0.000 min
 Response: 1363981
 Conc: 414.21 ng/ml

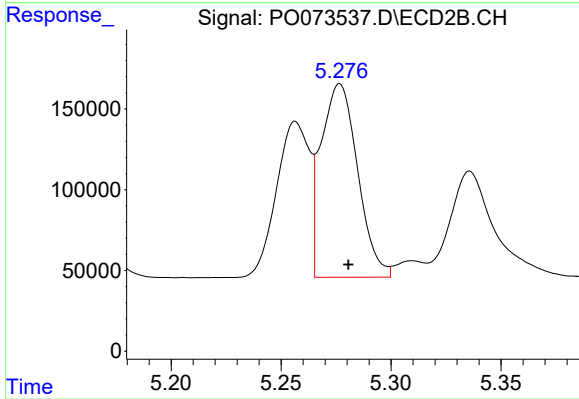
Instrument :
 ECD_O
 ClientSampled :



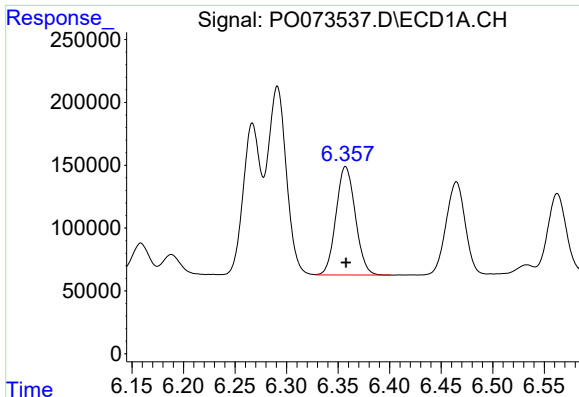
#3 AR-1016-1
 R.T.: 5.257 min
 Delta R.T.: -0.004 min
 Response: 1008204
 Conc: 494.89 ng/ml



#4 AR-1016-2
 R.T.: 6.291 min
 Delta R.T.: 0.000 min
 Response: 1878459
 Conc: 408.05 ng/ml



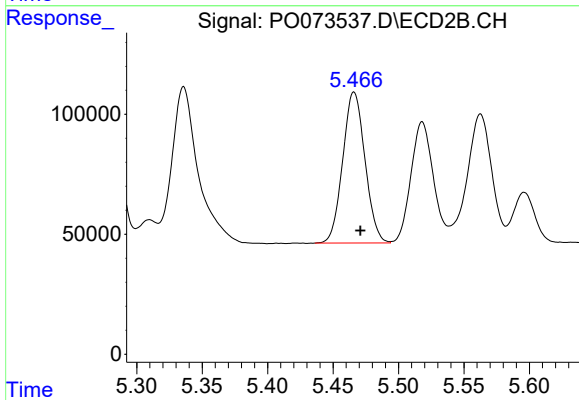
#4 AR-1016-2
 R.T.: 5.277 min
 Delta R.T.: -0.004 min
 Response: 1387112
 Conc: 495.97 ng/ml



#5 AR-1016-3

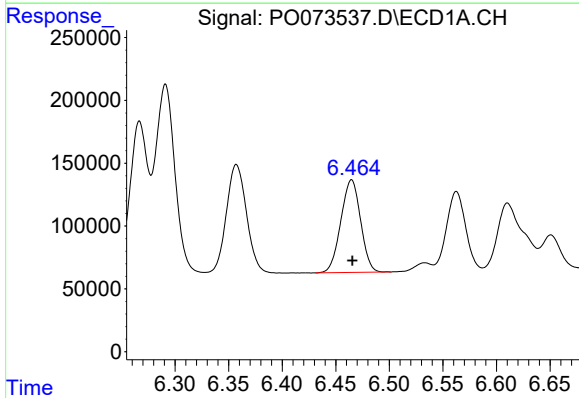
R.T.: 6.357 min
 Delta R.T.: 0.000 min
 Response: 1123723
 Conc: 410.38 ng/ml

Instrument :
 ECD_O
 ClientSampleId :



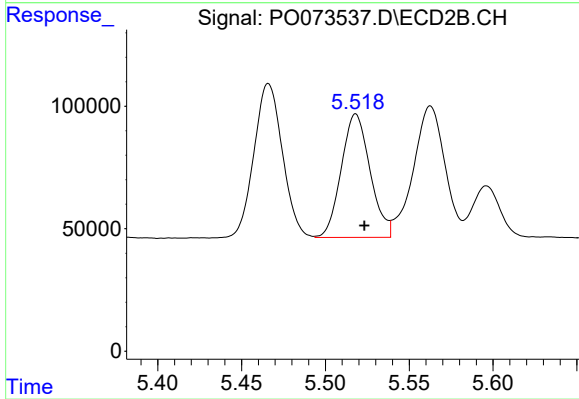
#5 AR-1016-3

R.T.: 5.466 min
 Delta R.T.: -0.005 min
 Response: 744765
 Conc: 500.84 ng/ml



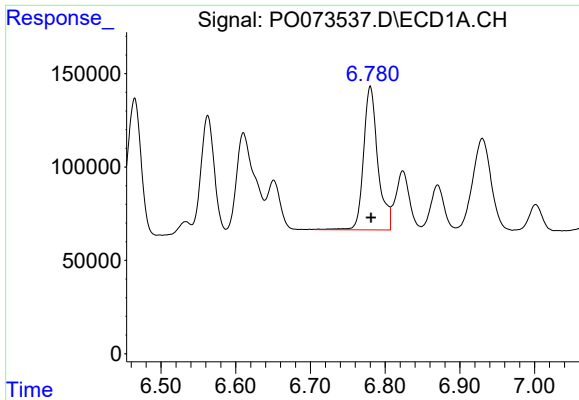
#6 AR-1016-4

R.T.: 6.465 min
 Delta R.T.: 0.000 min
 Response: 947592
 Conc: 415.17 ng/ml



#6 AR-1016-4

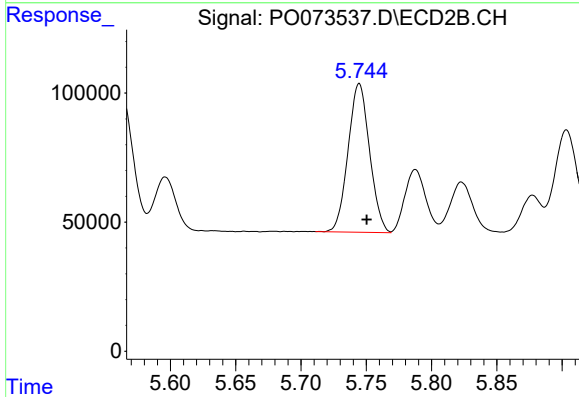
R.T.: 5.518 min
 Delta R.T.: -0.005 min
 Response: 604470
 Conc: 508.62 ng/ml



#7 AR-1016-5

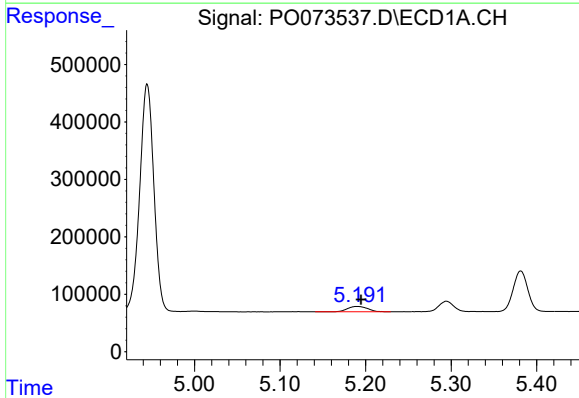
R.T.: 6.780 min
 Delta R.T.: -0.001 min
 Response: 1020889
 Conc: 454.06 ng/ml

Instrument :
 ECD_O
 ClientSampled :



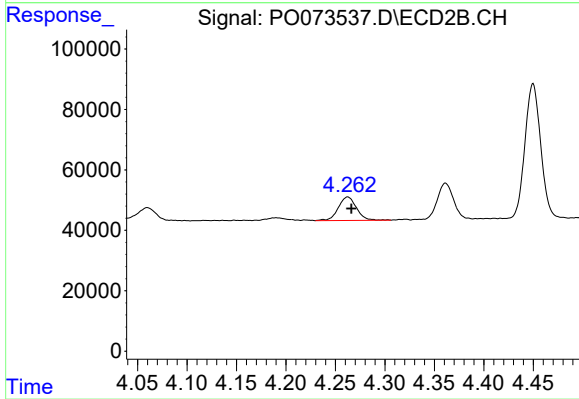
#7 AR-1016-5

R.T.: 5.745 min
 Delta R.T.: -0.006 min
 Response: 659598
 Conc: 438.18 ng/ml



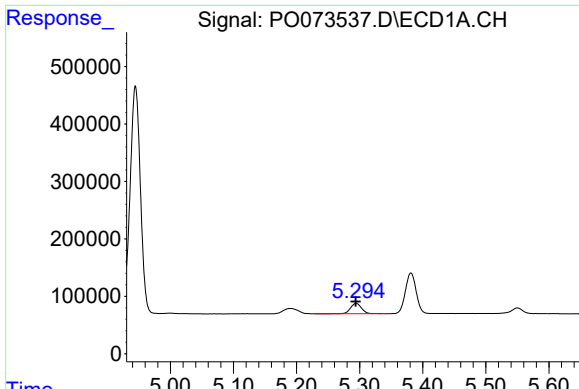
#8 AR-1221-1

R.T.: 5.190 min
 Delta R.T.: -0.004 min
 Response: 152606
 Conc: 153.84 ng/ml



#8 AR-1221-1

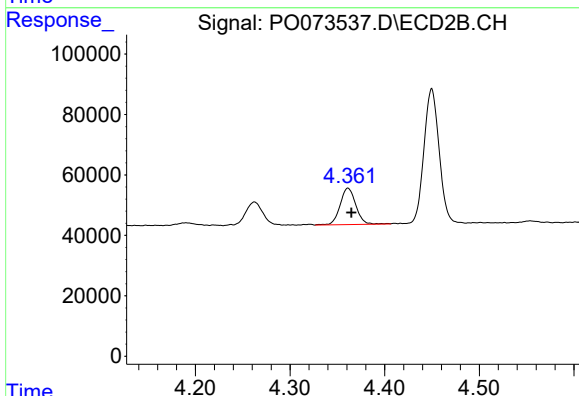
R.T.: 4.262 min
 Delta R.T.: -0.004 min
 Response: 98985
 Conc: 175.63 ng/ml



#9 AR-1221-2

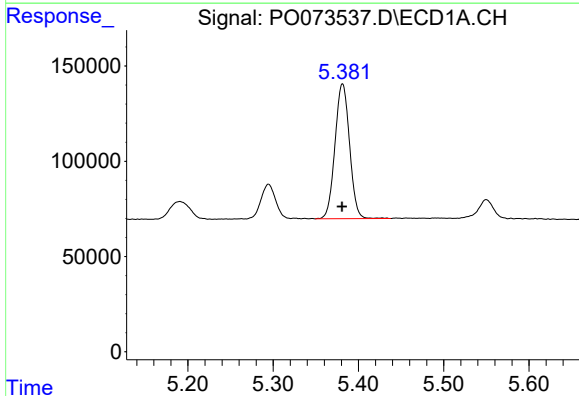
R.T.: 5.295 min
 Delta R.T.: 0.001 min
 Response: 223291
 Conc: 317.48 ng/ml

Instrument :
 ECD_O
 ClientSampleId :



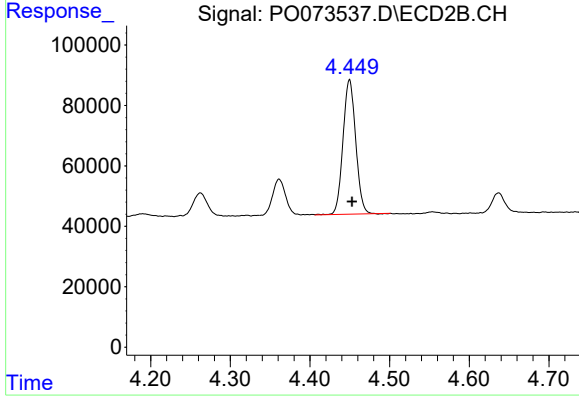
#9 AR-1221-2

R.T.: 4.361 min
 Delta R.T.: -0.004 min
 Response: 139134
 Conc: 344.19 ng/ml



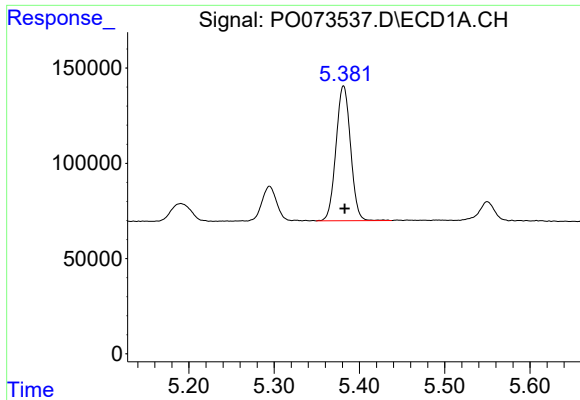
#10 AR-1221-3

R.T.: 5.381 min
 Delta R.T.: 0.000 min
 Response: 840019
 Conc: 374.66 ng/ml



#10 AR-1221-3

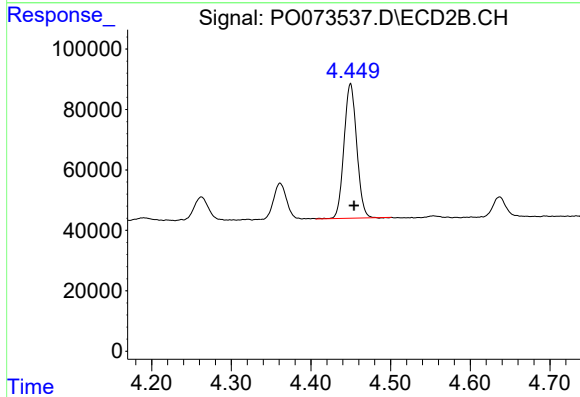
R.T.: 4.450 min
 Delta R.T.: -0.003 min
 Response: 492643
 Conc: 370.94 ng/ml



#11 AR-1232-1

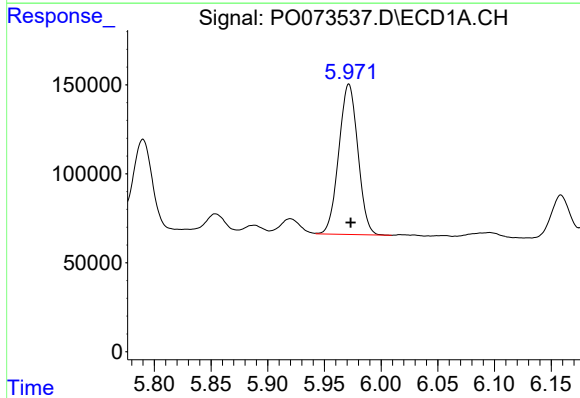
R.T.: 5.381 min
Delta R.T.: -0.001 min
Response: 840019
Conc: 455.18 ng/ml

Instrument :
ECD_O
ClientSampleId :



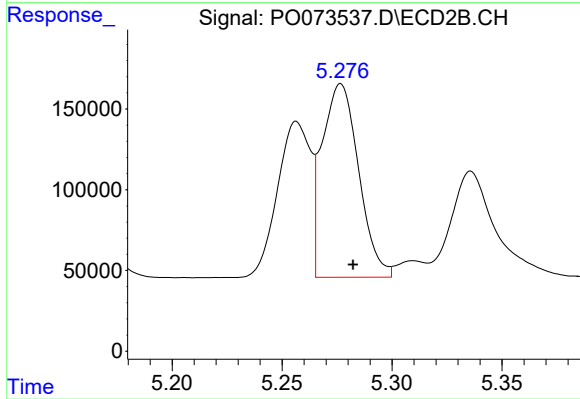
#11 AR-1232-1

R.T.: 4.450 min
Delta R.T.: -0.005 min
Response: 492643
Conc: 433.14 ng/ml



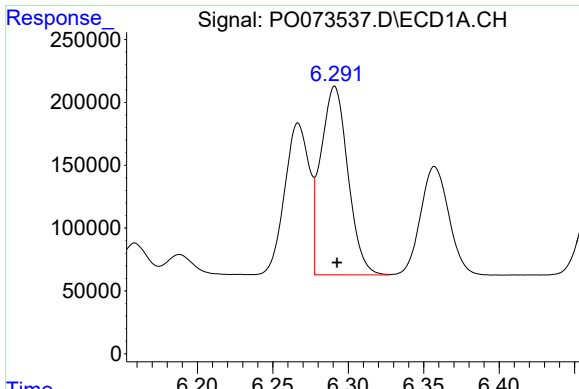
#12 AR-1232-2

R.T.: 5.972 min
Delta R.T.: -0.002 min
Response: 991031
Conc: 1041.41 ng/ml



#12 AR-1232-2

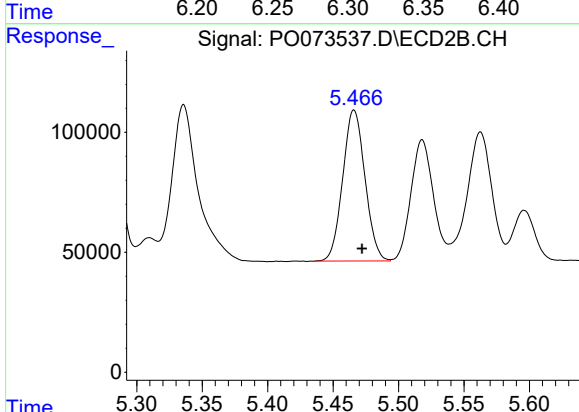
R.T.: 5.277 min
Delta R.T.: -0.006 min
Response: 1387112
Conc: 1160.58 ng/ml



#13 AR-1232-3

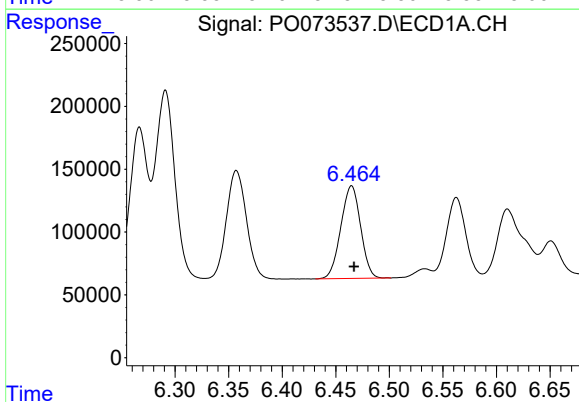
R.T.: 6.291 min
 Delta R.T.: -0.002 min
 Response: 1878459
 Conc: 960.29 ng/ml

Instrument :
 ECD_O
 ClientSampleId :



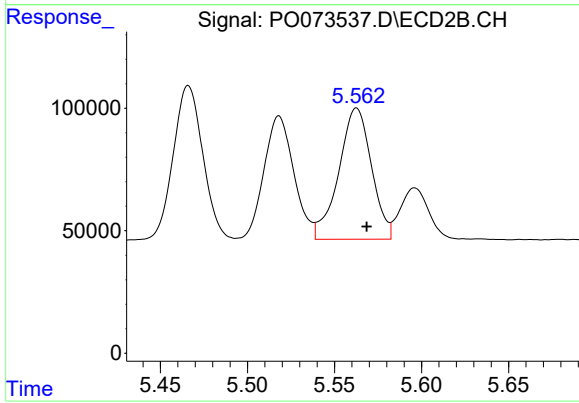
#13 AR-1232-3

R.T.: 5.466 min
 Delta R.T.: -0.006 min
 Response: 744765
 Conc: 1187.22 ng/ml



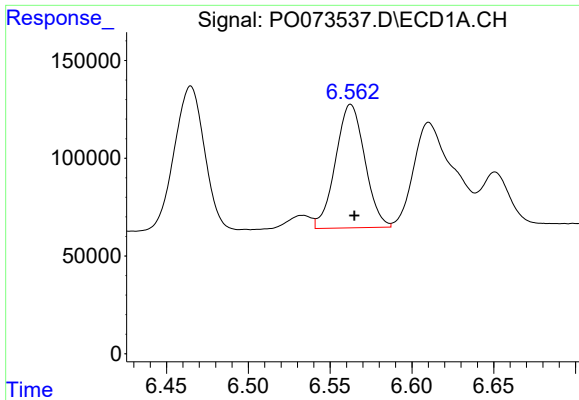
#14 AR-1232-4

R.T.: 6.465 min
 Delta R.T.: -0.002 min
 Response: 947592
 Conc: 958.41 ng/ml



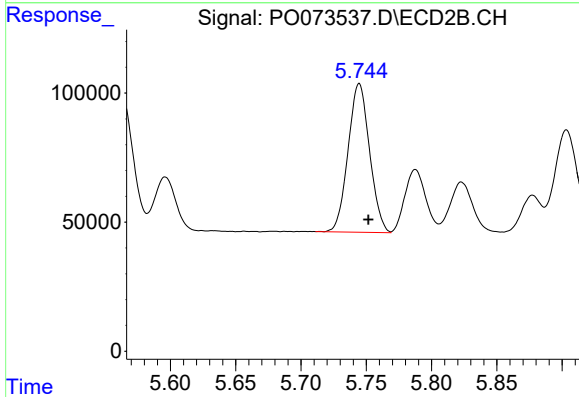
#14 AR-1232-4

R.T.: 5.563 min
 Delta R.T.: -0.006 min
 Response: 702452
 Conc: 1302.93 ng/ml

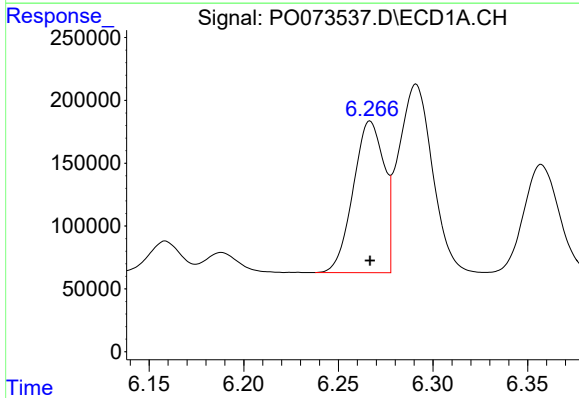


#15 AR-1232-5
 R.T.: 6.563 min
 Delta R.T.: -0.002 min
 Response: 785663
 Conc: 1166.97 ng/ml

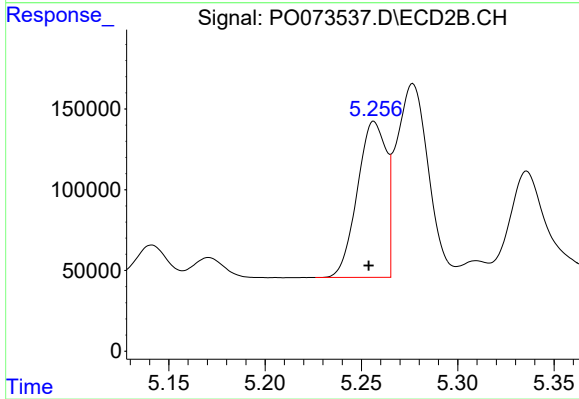
Instrument :
 ECD_O
 ClientSampleId :



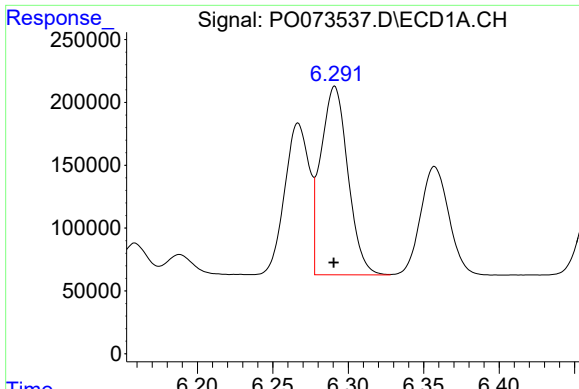
#15 AR-1232-5
 R.T.: 5.745 min
 Delta R.T.: -0.007 min
 Response: 659598
 Conc: 1116.49 ng/ml



#16 AR-1242-1
 R.T.: 6.267 min
 Delta R.T.: 0.000 min
 Response: 1363981
 Conc: 517.16 ng/ml

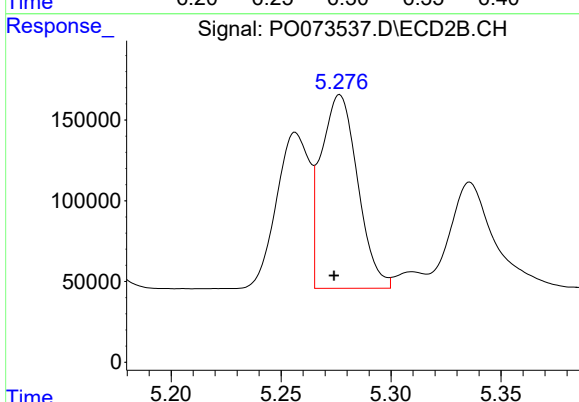


#16 AR-1242-1
 R.T.: 5.257 min
 Delta R.T.: 0.003 min
 Response: 1008204
 Conc: 616.44 ng/ml

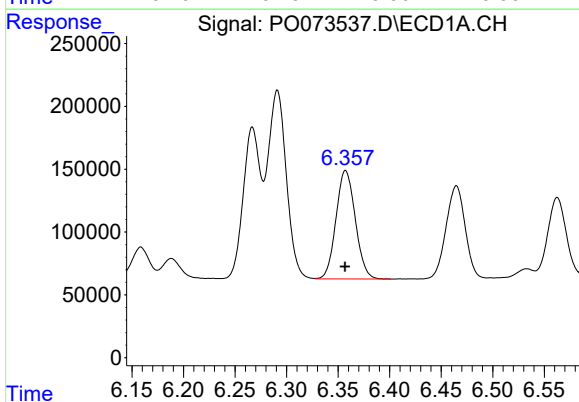


#17 AR-1242-2
 R.T.: 6.291 min
 Delta R.T.: 0.000 min
 Response: 1878459
 Conc: 513.88 ng/ml

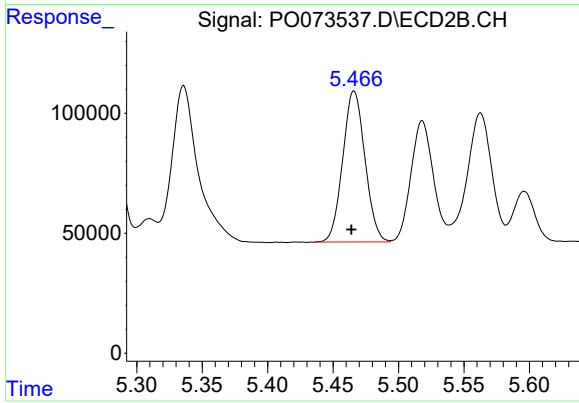
Instrument :
 ECD_O
 ClientSampleId :



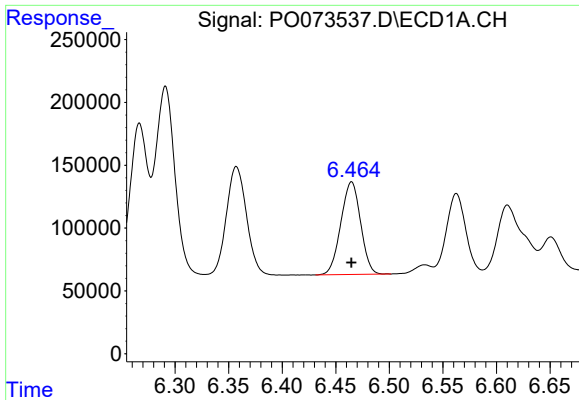
#17 AR-1242-2
 R.T.: 5.277 min
 Delta R.T.: 0.003 min
 Response: 1387112
 Conc: 613.27 ng/ml



#18 AR-1242-3
 R.T.: 6.357 min
 Delta R.T.: 0.000 min
 Response: 1123723
 Conc: 509.56 ng/ml

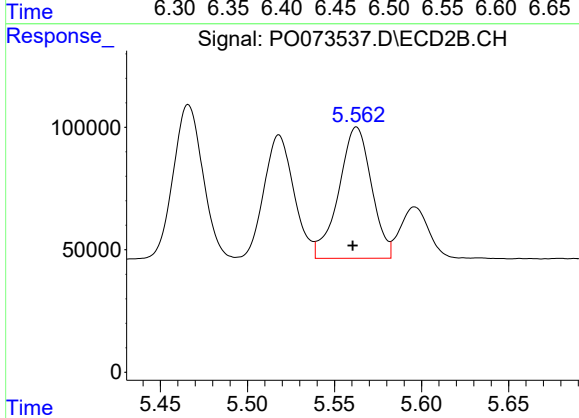


#18 AR-1242-3
 R.T.: 5.466 min
 Delta R.T.: 0.002 min
 Response: 744765
 Conc: 620.32 ng/ml

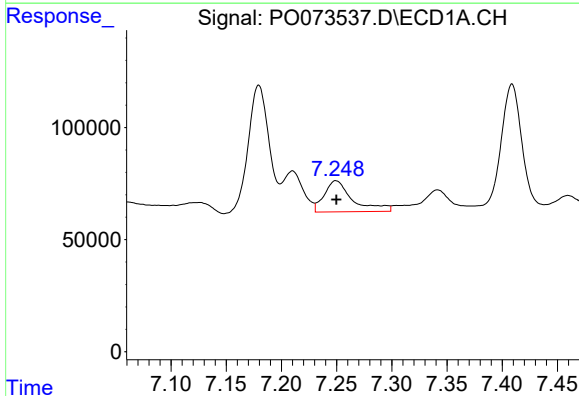


#19 AR-1242-4
 R.T.: 6.465 min
 Delta R.T.: 0.000 min
 Response: 947592
 Conc: 510.51 ng/ml

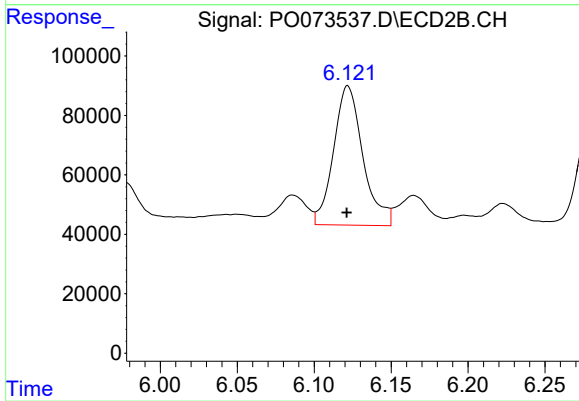
Instrument :
 ECD_O
 ClientSampled :



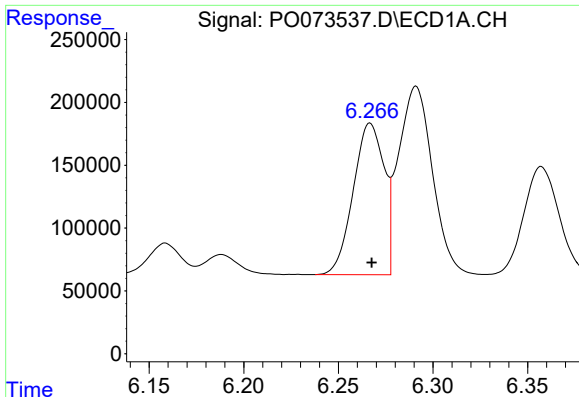
#19 AR-1242-4
 R.T.: 5.563 min
 Delta R.T.: 0.002 min
 Response: 702452
 Conc: 639.12 ng/ml



#20 AR-1242-5
 R.T.: 7.249 min
 Delta R.T.: 0.000 min
 Response: 249813
 Conc: 118.77 ng/ml



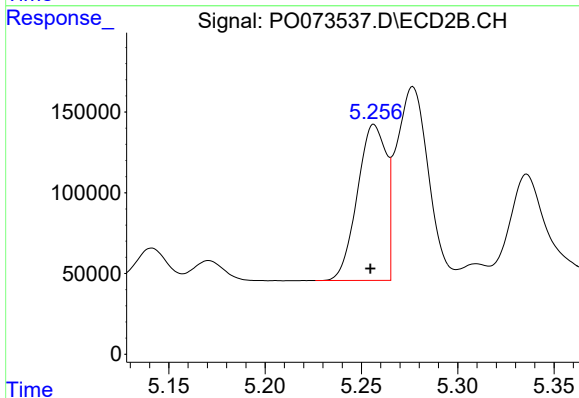
#20 AR-1242-5
 R.T.: 6.122 min
 Delta R.T.: 0.000 min
 Response: 621797
 Conc: 401.58 ng/ml



#21 AR-1248-1

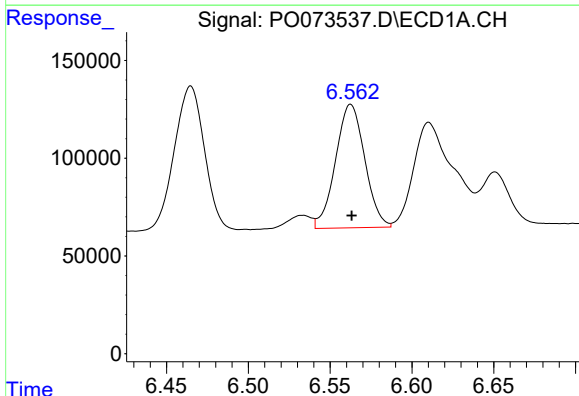
R.T.: 6.267 min
 Delta R.T.: 0.000 min
 Response: 1363981
 Conc: 682.30 ng/ml

Instrument :
 ECD_O
 ClientSampleId :



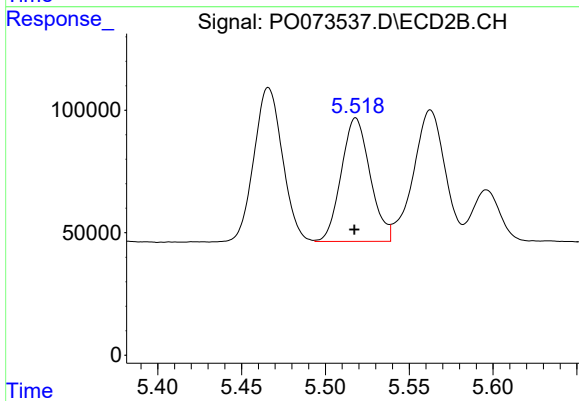
#21 AR-1248-1

R.T.: 5.257 min
 Delta R.T.: 0.002 min
 Response: 1008204
 Conc: 803.94 ng/ml



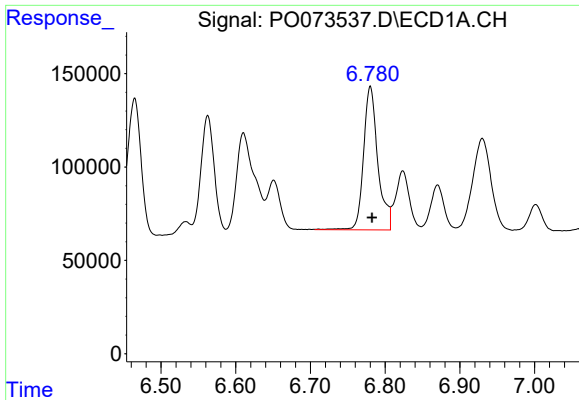
#22 AR-1248-2

R.T.: 6.563 min
 Delta R.T.: 0.000 min
 Response: 785663
 Conc: 303.91 ng/ml



#22 AR-1248-2

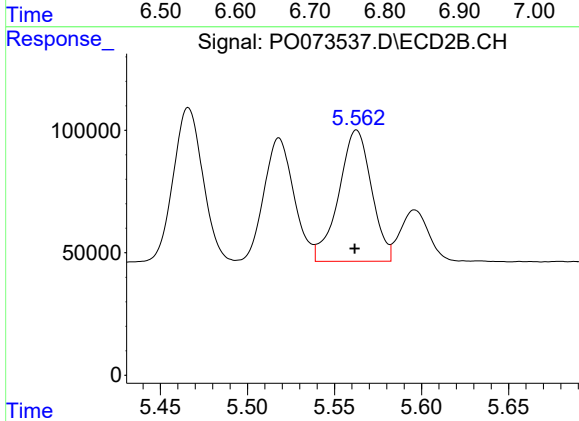
R.T.: 5.518 min
 Delta R.T.: 0.000 min
 Response: 604470
 Conc: 357.43 ng/ml



#23 AR-1248-3

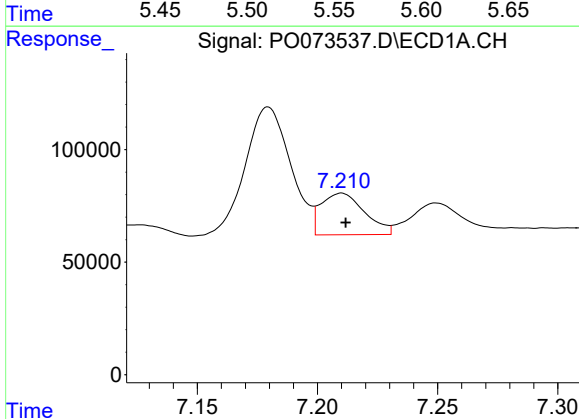
R.T.: 6.780 min
Delta R.T.: -0.002 min
Response: 1020889
Conc: 333.13 ng/ml

Instrument :
ECD_O
ClientSampleId :



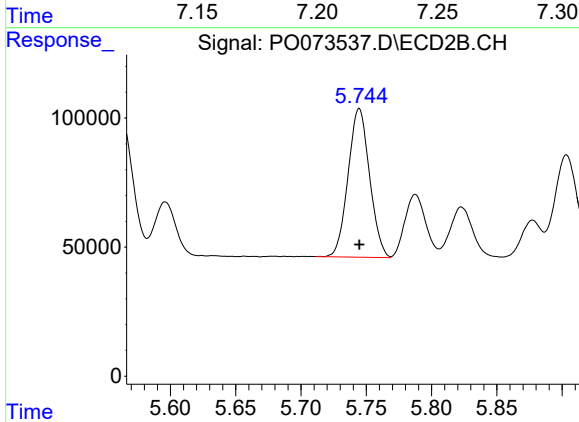
#23 AR-1248-3

R.T.: 5.563 min
Delta R.T.: 0.000 min
Response: 702452
Conc: 411.64 ng/ml



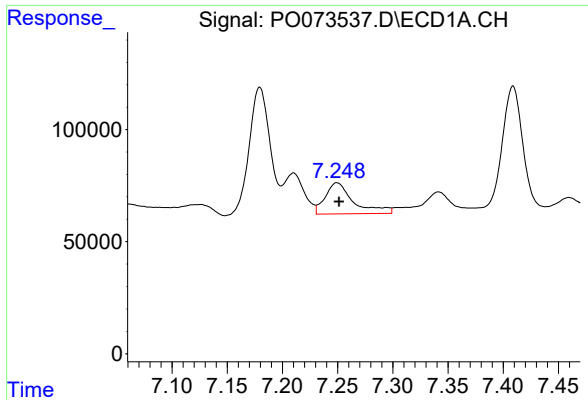
#24 AR-1248-4

R.T.: 7.210 min
Delta R.T.: -0.002 min
Response: 232958
Conc: 62.45 ng/ml



#24 AR-1248-4

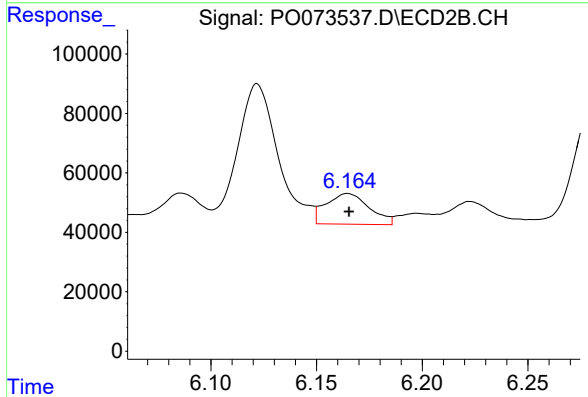
R.T.: 5.745 min
Delta R.T.: 0.000 min
Response: 659598
Conc: 320.86 ng/ml



#25 AR-1248-5

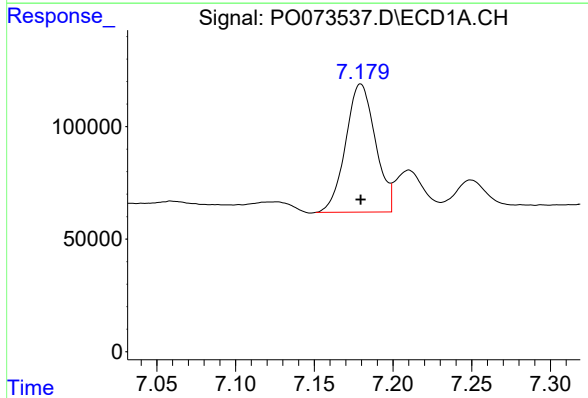
R.T.: 7.249 min
 Delta R.T.: -0.002 min
 Response: 249813
 Conc: 69.82 ng/ml

Instrument :
 ECD_O
 ClientSampled :



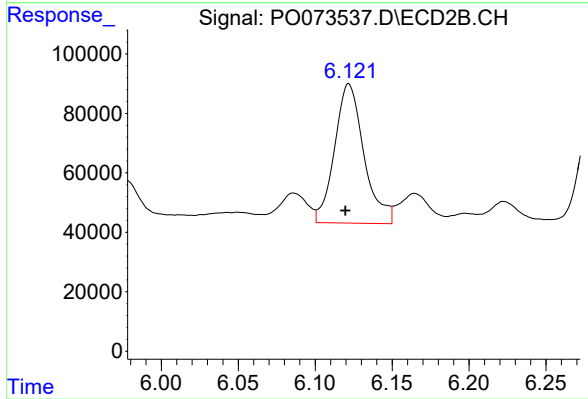
#25 AR-1248-5

R.T.: 6.165 min
 Delta R.T.: 0.000 min
 Response: 147554
 Conc: 66.45 ng/ml



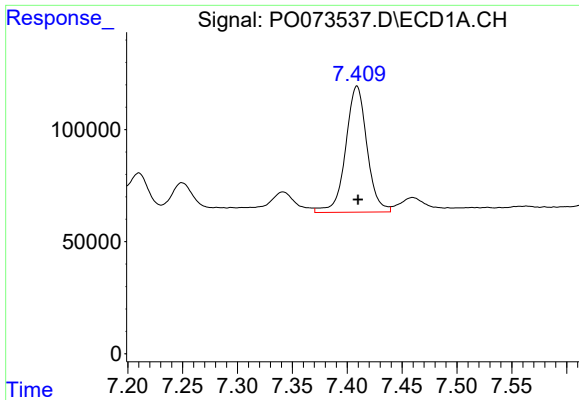
#26 AR-1254-1

R.T.: 7.179 min
 Delta R.T.: 0.000 min
 Response: 747825
 Conc: 216.24 ng/ml



#26 AR-1254-1

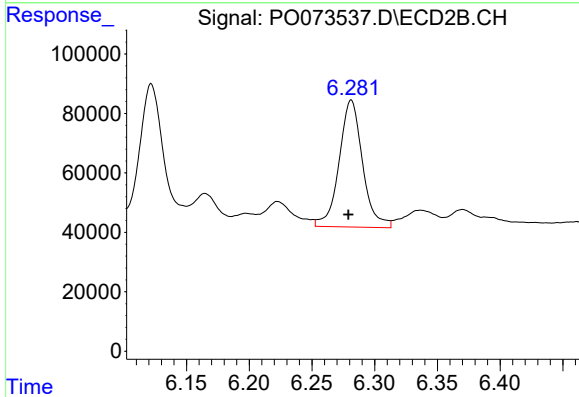
R.T.: 6.122 min
 Delta R.T.: 0.002 min
 Response: 621797
 Conc: 199.69 ng/ml



#27 AR-1254-2

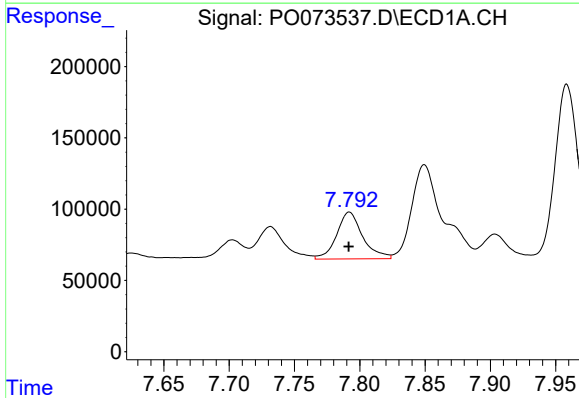
R.T.: 7.409 min
 Delta R.T.: -0.001 min
 Response: 762542
 Conc: 139.97 ng/ml

Instrument :
 ECD_O
 ClientSampleId :



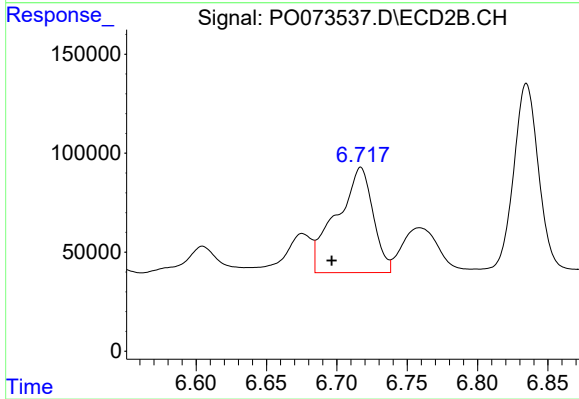
#27 AR-1254-2

R.T.: 6.281 min
 Delta R.T.: 0.002 min
 Response: 554278
 Conc: 203.03 ng/ml



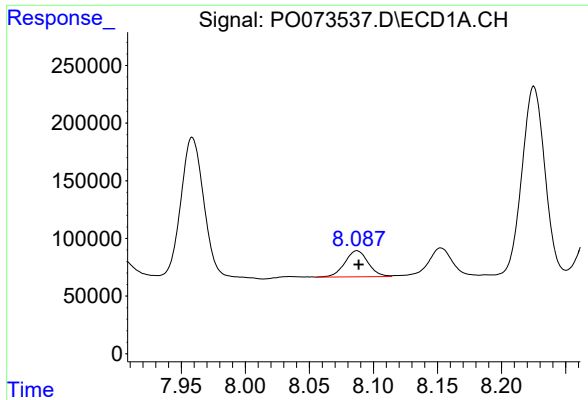
#28 AR-1254-3

R.T.: 7.792 min
 Delta R.T.: 0.000 min
 Response: 457431
 Conc: 80.71 ng/ml



#28 AR-1254-3

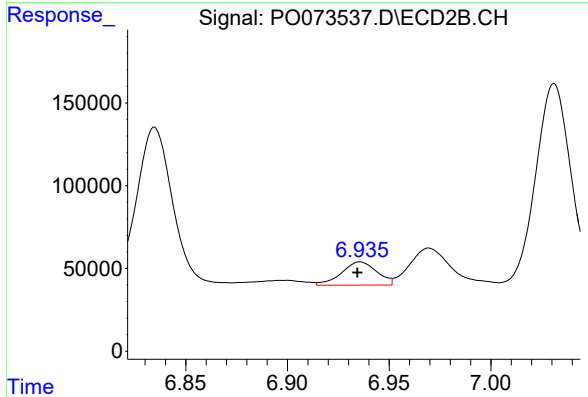
R.T.: 6.717 min
 Delta R.T.: 0.021 min
 Response: 955536
 Conc: 225.94 ng/ml



#29 AR-1254-4

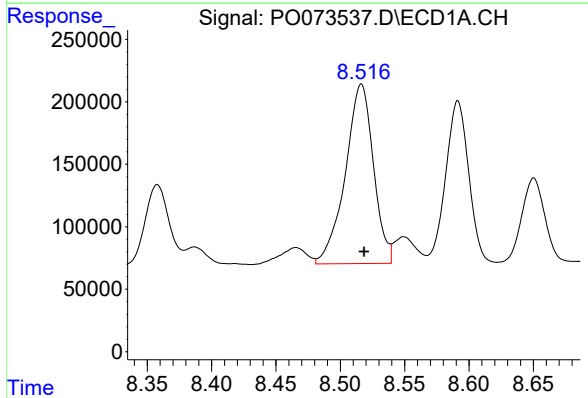
R.T.: 8.087 min
 Delta R.T.: -0.001 min
 Response: 286522
 Conc: 59.22 ng/ml

Instrument :
 ECD_O
 ClientSampled :



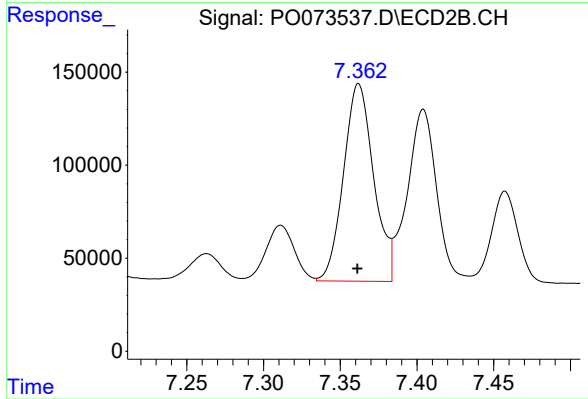
#29 AR-1254-4

R.T.: 6.936 min
 Delta R.T.: 0.001 min
 Response: 170253
 Conc: 58.97 ng/ml



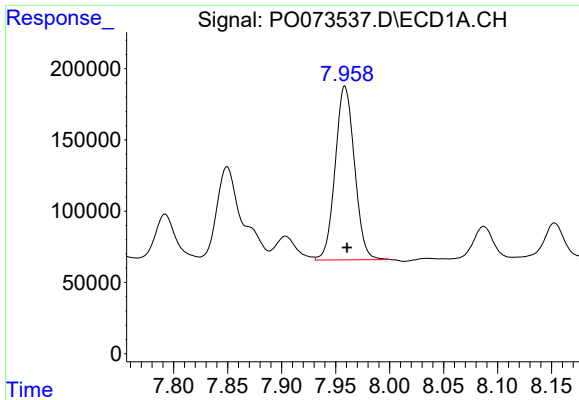
#30 AR-1254-5

R.T.: 8.516 min
 Delta R.T.: -0.002 min
 Response: 2184601
 Conc: 458.91 ng/ml



#30 AR-1254-5

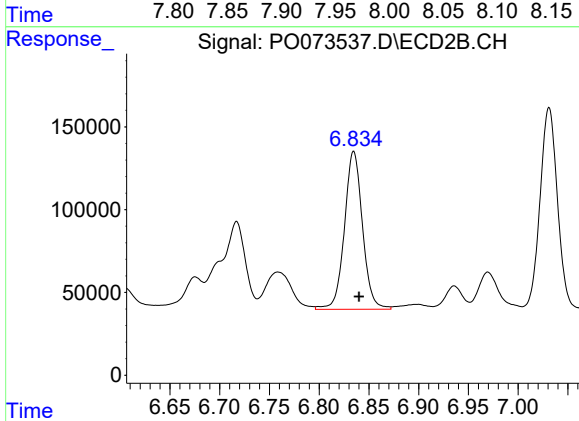
R.T.: 7.362 min
 Delta R.T.: 0.000 min
 Response: 1455574
 Conc: 394.13 ng/ml



#31 AR-1260-1

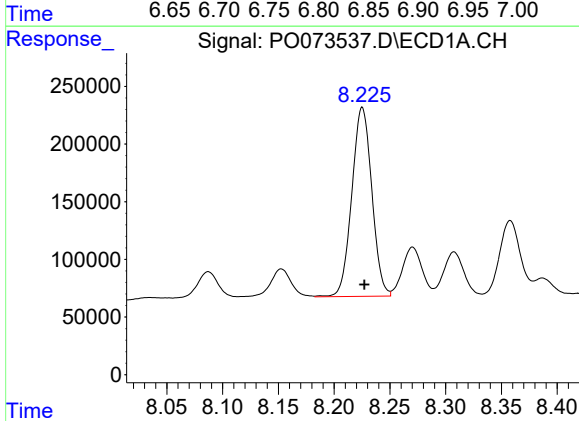
R.T.: 7.959 min
 Delta R.T.: -0.002 min
 Response: 1519733
 Conc: 376.62 ng/ml

Instrument :
 ECD_O
 ClientSampled :



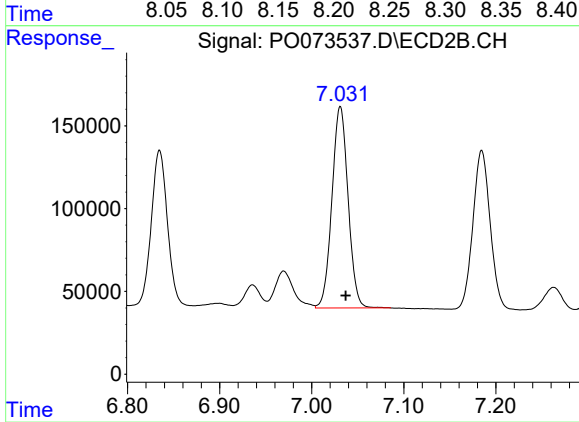
#31 AR-1260-1

R.T.: 6.835 min
 Delta R.T.: -0.005 min
 Response: 1206967
 Conc: 449.22 ng/ml



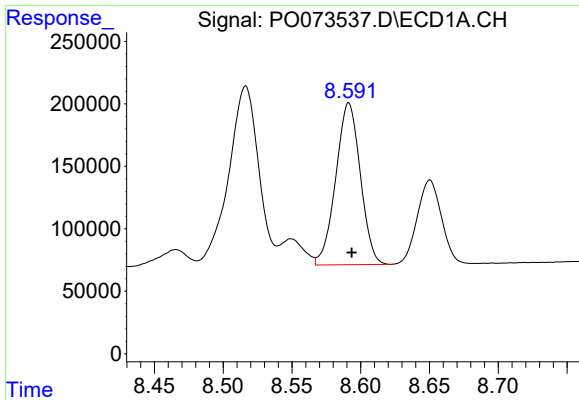
#32 AR-1260-2

R.T.: 8.225 min
 Delta R.T.: -0.002 min
 Response: 2046529
 Conc: 372.38 ng/ml



#32 AR-1260-2

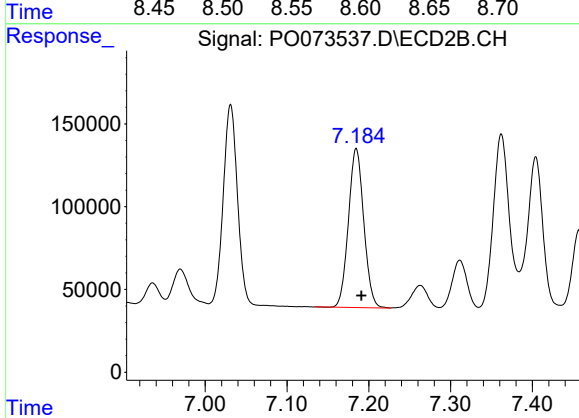
R.T.: 7.031 min
 Delta R.T.: -0.006 min
 Response: 1478279
 Conc: 443.20 ng/ml



#33 AR-1260-3

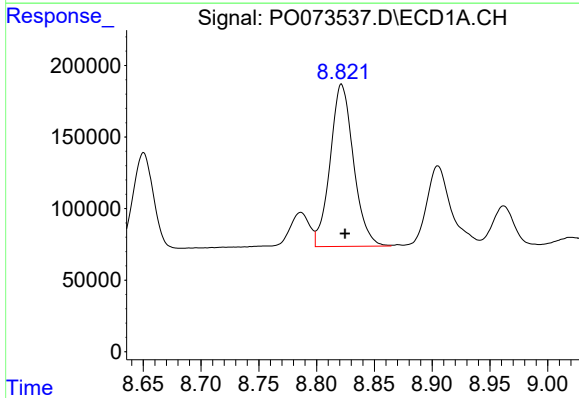
R.T.: 8.591 min
 Delta R.T.: -0.002 min
 Response: 1609933
 Conc: 362.80 ng/ml

Instrument :
 ECD_O
 ClientSampled :



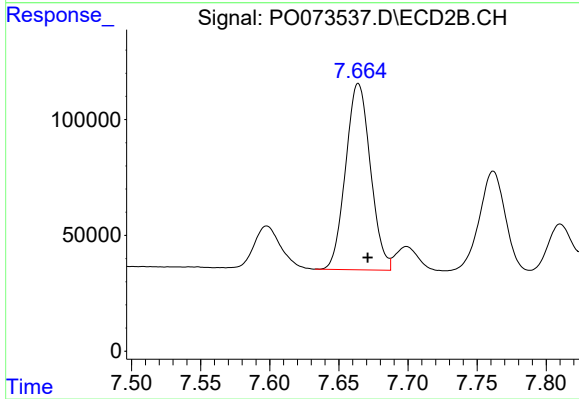
#33 AR-1260-3

R.T.: 7.185 min
 Delta R.T.: -0.006 min
 Response: 1253294
 Conc: 405.71 ng/ml



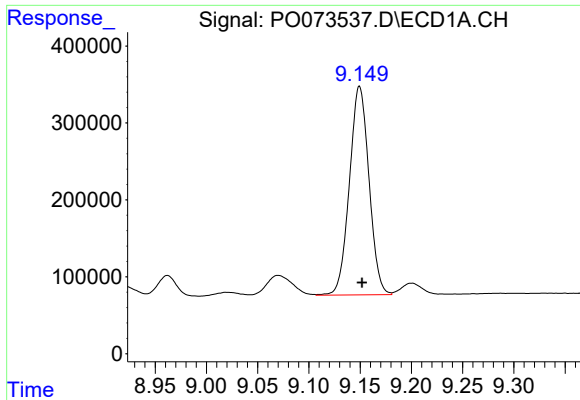
#34 AR-1260-4

R.T.: 8.822 min
 Delta R.T.: -0.003 min
 Response: 1593372
 Conc: 369.16 ng/ml



#34 AR-1260-4

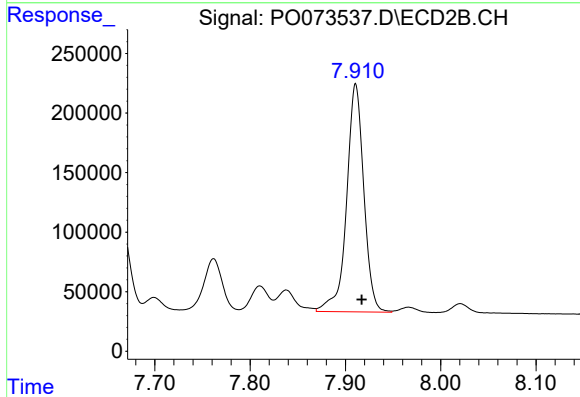
R.T.: 7.664 min
 Delta R.T.: -0.007 min
 Response: 1004532
 Conc: 408.21 ng/ml



#35 AR-1260-5

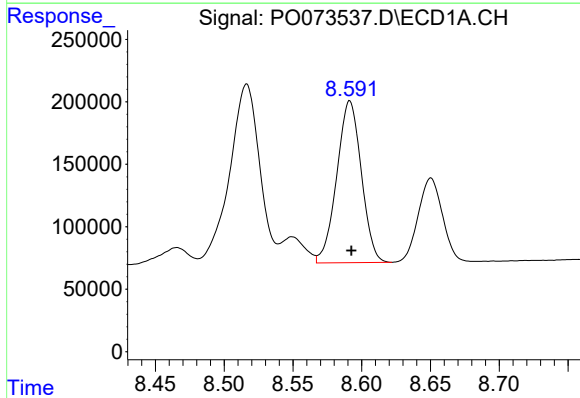
R.T.: 9.149 min
 Delta R.T.: -0.003 min
 Response: 3605259
 Conc: 365.09 ng/ml

Instrument :
 ECD_O
 ClientSampled :



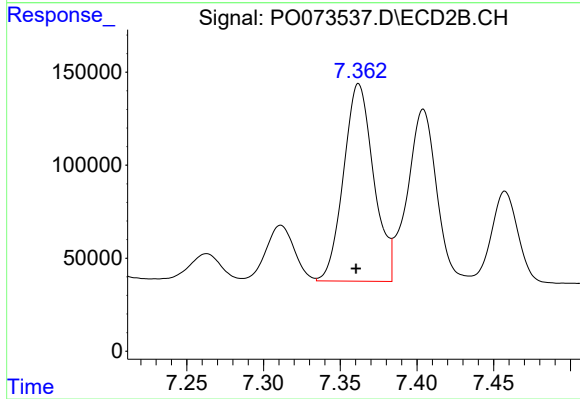
#35 AR-1260-5

R.T.: 7.911 min
 Delta R.T.: -0.007 min
 Response: 2407152
 Conc: 388.56 ng/ml



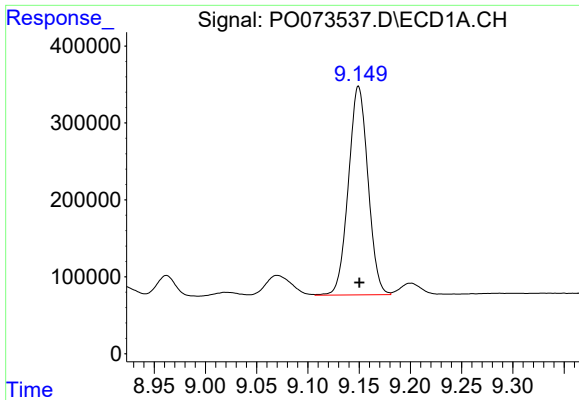
#36 AR-1262-1

R.T.: 8.591 min
 Delta R.T.: -0.001 min
 Response: 1609933
 Conc: 257.86 ng/ml



#36 AR-1262-1

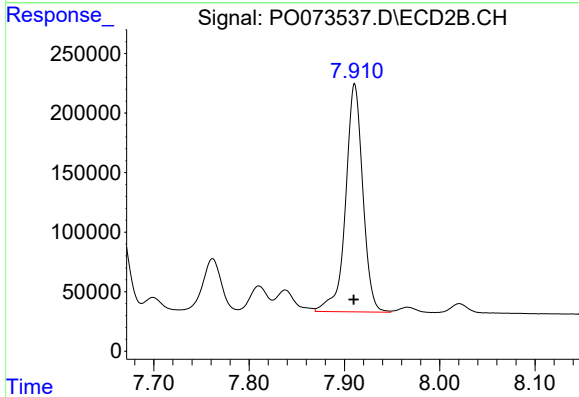
R.T.: 7.362 min
 Delta R.T.: 0.002 min
 Response: 1455574
 Conc: 751.09 ng/ml



#37 AR-1262-2

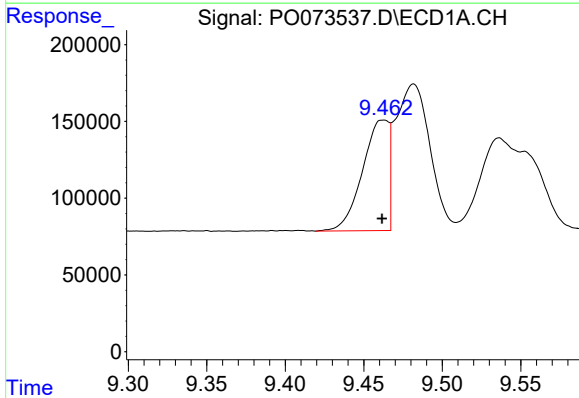
R.T.: 9.149 min
 Delta R.T.: 0.000 min
 Response: 3605259
 Conc: 333.29 ng/ml

Instrument :
 ECD_O
 ClientSampled :



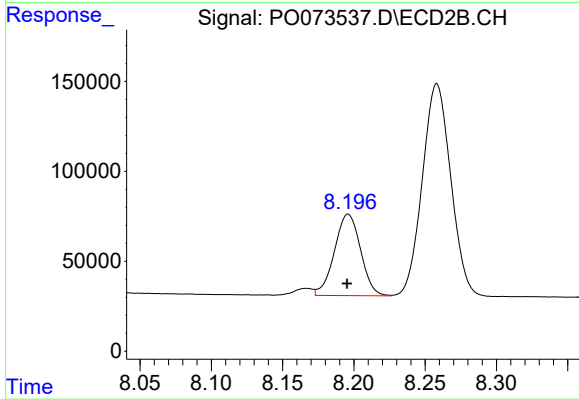
#37 AR-1262-2

R.T.: 7.911 min
 Delta R.T.: 0.001 min
 Response: 2407152
 Conc: 367.14 ng/ml



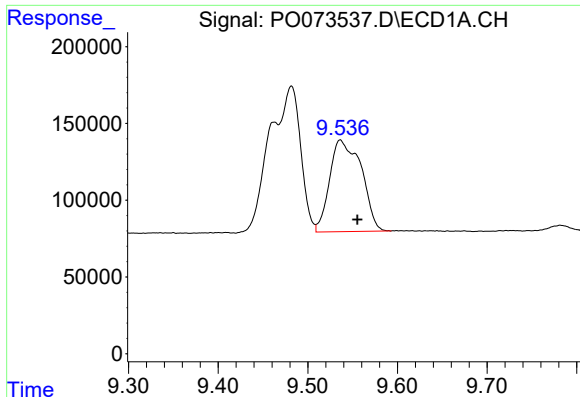
#38 AR-1262-3

R.T.: 9.462 min
 Delta R.T.: 0.000 min
 Response: 839083
 Conc: 114.32 ng/ml



#38 AR-1262-3

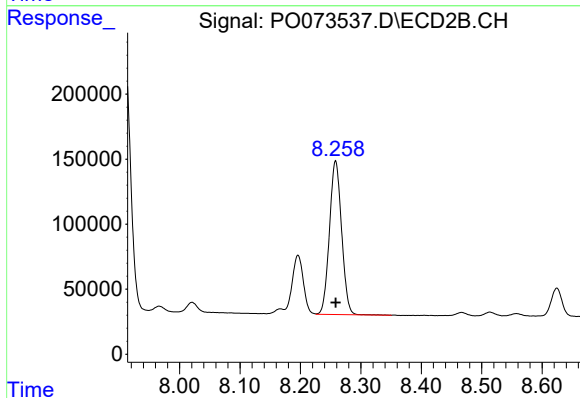
R.T.: 8.196 min
 Delta R.T.: 0.000 min
 Response: 578363
 Conc: 214.35 ng/ml



#39 AR-1262-4

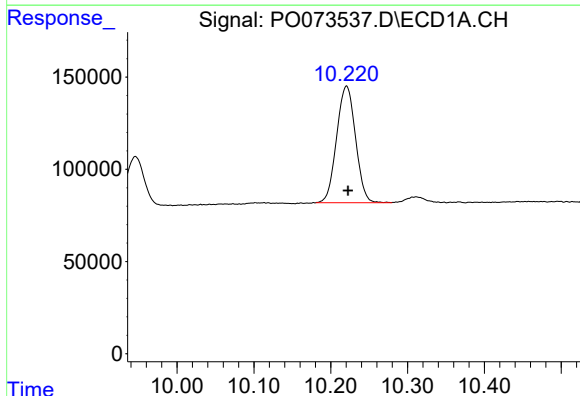
R.T.: 9.536 min
 Delta R.T.: -0.019 min
 Response: 1466162
 Conc: 266.43 ng/ml

Instrument :
 ECD_O
 ClientSampleId :



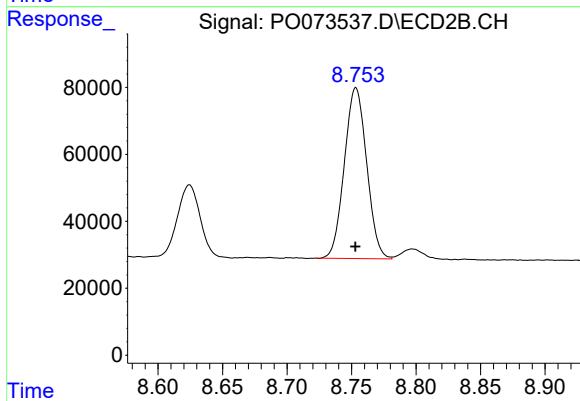
#39 AR-1262-4

R.T.: 8.258 min
 Delta R.T.: 0.000 min
 Response: 1647297
 Conc: 345.00 ng/ml



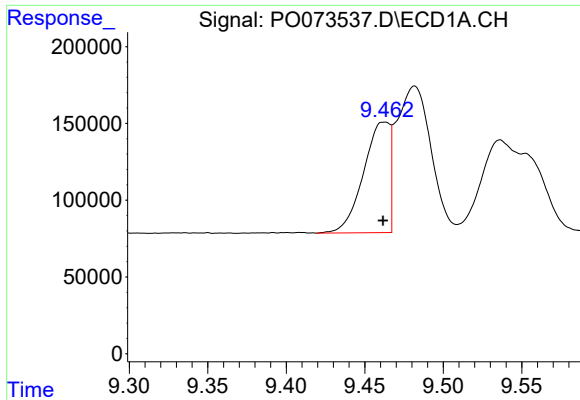
#40 AR-1262-5

R.T.: 10.221 min
 Delta R.T.: -0.002 min
 Response: 1076484
 Conc: 276.56 ng/ml



#40 AR-1262-5

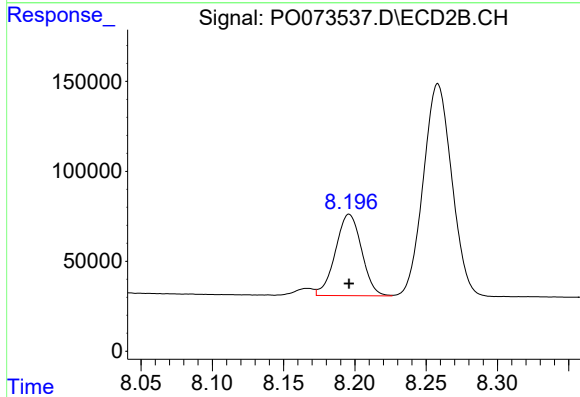
R.T.: 8.753 min
 Delta R.T.: 0.000 min
 Response: 614843
 Conc: 268.83 ng/ml



#41 AR-1268-1

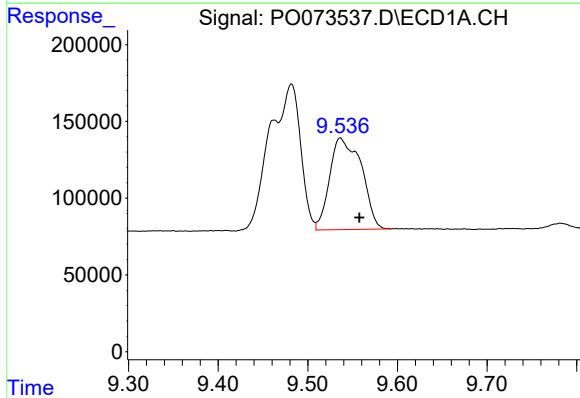
R.T.: 9.462 min
 Delta R.T.: 0.000 min
 Response: 839083
 Conc: 60.07 ng/ml

Instrument :
 ECD_O
 ClientSampled :



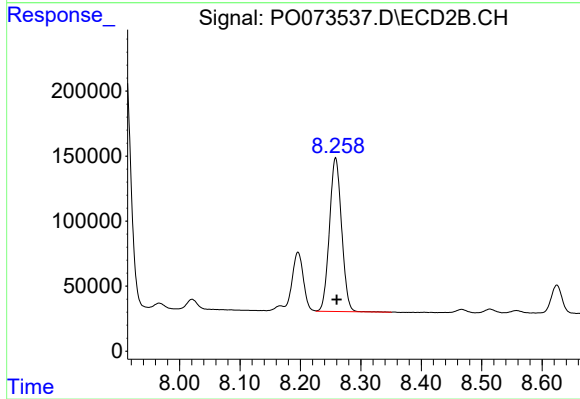
#41 AR-1268-1

R.T.: 8.196 min
 Delta R.T.: 0.000 min
 Response: 578363
 Conc: 71.00 ng/ml



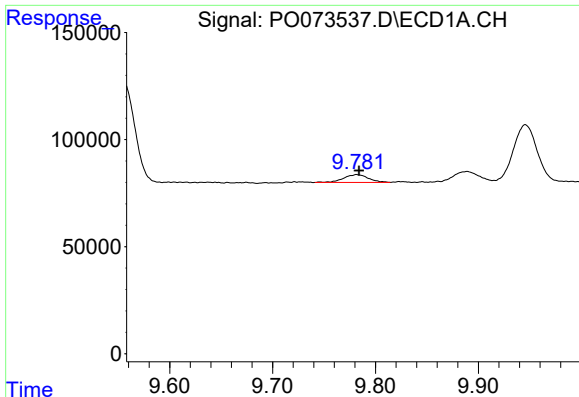
#42 AR-1268-2

R.T.: 9.536 min
 Delta R.T.: -0.021 min
 Response: 1466162
 Conc: 120.69 ng/ml



#42 AR-1268-2

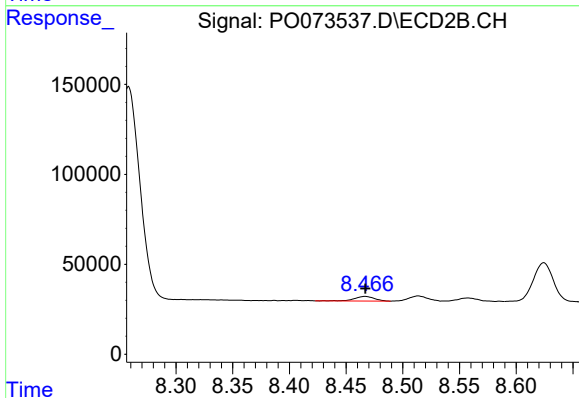
R.T.: 8.258 min
 Delta R.T.: -0.002 min
 Response: 1647297
 Conc: 225.54 ng/ml



#43 AR-1268-3

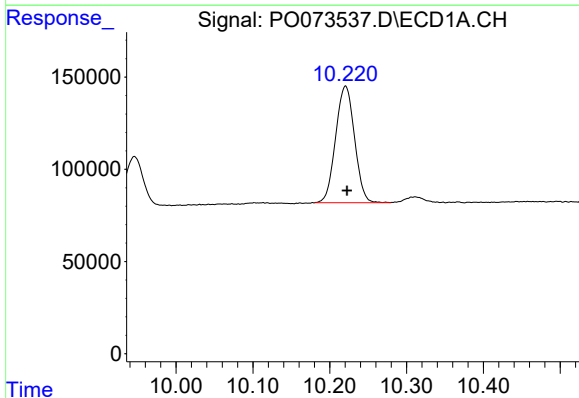
R.T.: 9.782 min
 Delta R.T.: -0.002 min
 Response: 62175
 Conc: 5.90 ng/ml

Instrument :
 ECD_O
 ClientSampled :



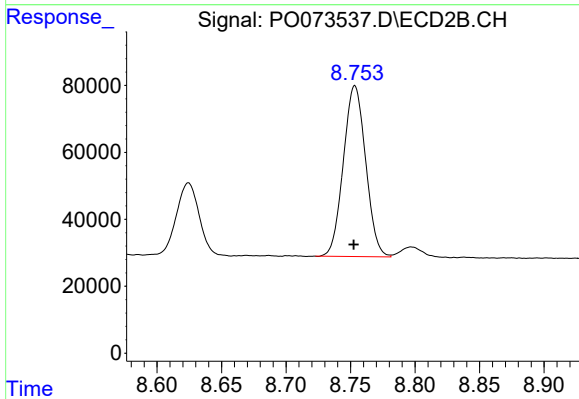
#43 AR-1268-3

R.T.: 8.467 min
 Delta R.T.: 0.000 min
 Response: 31847
 Conc: 5.09 ng/ml



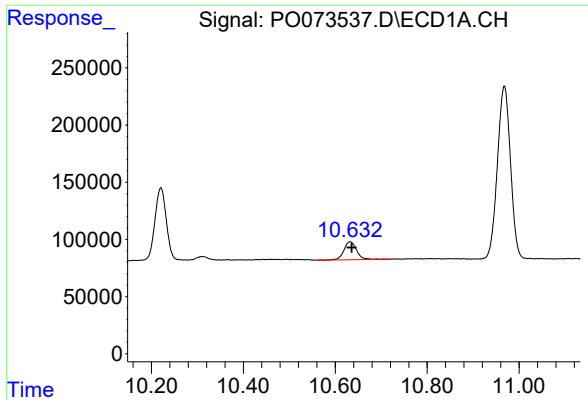
#44 AR-1268-4

R.T.: 10.221 min
 Delta R.T.: -0.002 min
 Response: 1076484
 Conc: 238.62 ng/ml



#44 AR-1268-4

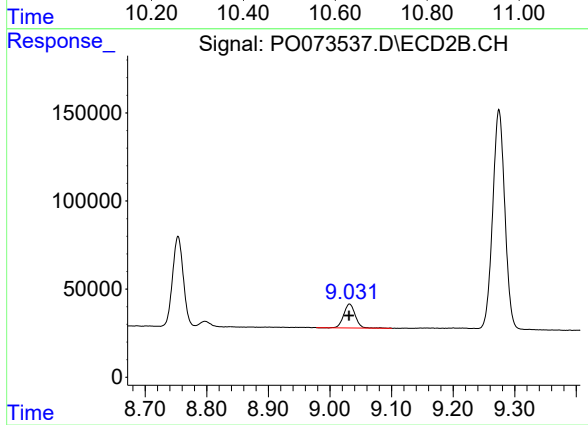
R.T.: 8.753 min
 Delta R.T.: 0.000 min
 Response: 614843
 Conc: 229.54 ng/ml



#45 AR-1268-5

R.T.: 10.633 min
Delta R.T.: -0.003 min
Response: 303443
Conc: 9.53 ng/ml

Instrument :
ECD_O
ClientSampleId :



#45 AR-1268-5

R.T.: 9.032 min
Delta R.T.: 0.000 min
Response: 176910
Conc: 9.70 ng/ml