

Data Path : Z:\pestpcbsrv\HPCHEM1\ECD\_0\Data\PO112420\  
 Data File : PO073540.D  
 Signal(s) : Signal #1: ECD1A.CH Signal #2: ECD2B.CH  
 Acq On : 25 Nov 2020 4:14  
 Operator : DD\AJ  
 Sample : AR1254CCC500  
 Misc :  
 ALS Vial : 6 Sample Multiplier: 1

Instrument :  
 ECD\_0  
 ClientSampled :  
 AR1254CCC500

Integration File signal 1: autoint1.e  
 Integration File signal 2: autoint2.e  
 Quant Time: Nov 25 10:41:21 2020  
 Quant Method : Z:\pestpcbsrv\HPCHEM1\ECD\_0\methods\PO112320.M  
 Quant Title : GC EXTRACTABLES  
 QLast Update : Wed Nov 25 10:04:26 2020  
 Response via : Initial Calibration  
 Integrator: ChemStation 6890 Scale Mode: Small noise peaks clipped

Volume Inj. : 2 µl  
 Signal #1 Phase : ZB-MR1 Signal #2 Phase: ZB-MR2  
 Signal #1 Info : 30Mx0.32mmx 0.50µ Signal #2 Info : 30M x 0.32mm x 0.25µm

Compound	RT#1	RT#2	Resp#1	Resp#2	ng/ml	ng/ml
System Monitoring Compounds						
1) SA Tetrachlo...	4.945	4.006	4997338	2786292	59.741	56.831
2) SA Decachlor...	10.970	9.273	3502123	1967707	42.475	42.916
Target Compounds						
3) L1 AR-1016-1	6.267	5.254	50141	52256	15.226	25.651 #
4) L1 AR-1016-2	6.294	5.254f	65222	52256	14.168	18.684 #
5) L1 AR-1016-3	6.358	0.000	28743	0	10.497	N.D. #
6) L1 AR-1016-4	6.462	5.516	22984	663064	10.070	557.919 #
7) L1 AR-1016-5	6.780	5.742	626196	403006	278.514	267.724
9) L2 AR-1221-2	5.298	4.356	61447	40952	87.366	101.307
10) L2 AR-1221-3	5.381	0.000	19317	0	8.615	N.D. #
11) L3 AR-1232-1	5.381	0.000	19317	0	10.467	N.D. #
12) L3 AR-1232-2	5.970	5.254f	28093	52256	29.521	43.722 #
13) L3 AR-1232-3	6.294	0.000	65222	0	33.342	N.D. #
14) L3 AR-1232-4	6.462	5.559	22984	198959	23.246	369.036 #
15) L3 AR-1232-5	6.563	5.742	1062761	403006	1578.552	682.164 #
16) L4 AR-1242-1	6.267	5.254	50141	52256	19.011	31.951 #
17) L4 AR-1242-2	6.294	5.254f	65222	52256	17.842	23.103 #
18) L4 AR-1242-3	6.358	0.000	28743	0	13.034	N.D. #
19) L4 AR-1242-4	6.462	5.559	22984	198959	12.382	181.020 #
20) L4 AR-1242-5	7.252	6.120	654459	1823754	311.149	1177.848 #
21) L5 AR-1248-1	6.267	5.254	50141	52256	25.082	41.669 #
22) L5 AR-1248-2	6.563	5.516	1062761	663064	411.093	392.082
23) L5 AR-1248-3	6.780	5.559	626196	198959	204.335	116.590 #
24) L5 AR-1248-4	7.211	5.742	960036	403006	257.363	196.044
25) L5 AR-1248-5	7.252	6.162	654459	326874	182.914	147.205
26) L6 AR-1254-1	7.180	6.120	1802822	1823754	521.298	585.699
27) L6 AR-1254-2	7.410	6.279	2477375	1593775	454.735	583.799 #
28) L6 AR-1254-3	7.793	6.696	2906503	2327640	512.859	550.370
29) L6 AR-1254-4	8.090	6.934	2117504	1518997	437.672	526.142
30) L6 AR-1254-5	8.519	7.361	2028437	1764931	426.110	477.891
31) L7 AR-1260-1	7.960	6.834	1087631	1165742	269.533	433.881 #
32) L7 AR-1260-2	8.226	7.029	1225776	890344	223.036	266.932
33) L7 AR-1260-3	8.581	7.180	245507	835009	55.325	270.303 #
34) L7 AR-1260-4	8.816	7.662	747059	86547	173.084	35.170 #
35) L7 AR-1260-5	9.150	7.908	297047	212735	30.081	34.339
36) L8 AR-1262-1	8.581	7.361	245507	1764931	39.323	910.725 #
37) L8 AR-1262-2	9.150	7.908	297047	212735	27.460	32.447
38) L8 AR-1262-3	9.485f	0.000	298334	0	40.645	N.D. #
39) L8 AR-1262-4	9.533f	8.253	83396	189744	15.155	39.739 #
41) L9 AR-1268-1	9.485f	0.000	298334	0	21.358	N.D. #
42) L9 AR-1268-2	9.533f	8.253	83396	189744	6.865	25.979 #
45) L9 AR-1268-5	10.631	0.000	544	0	0.017	N.D. #

Data Path : Z:\pestpcbsrv\HPCHEM1\ECD\_0\Data\PO112420\  
 Data File : PO073540.D  
 Signal(s) : Signal #1: ECD1A.CH Signal #2: ECD2B.CH  
 Acq On : 25 Nov 2020 4:14  
 Operator : DD\AJ  
 Sample : AR1254CCC500  
 Misc :  
 ALS Vial : 6 Sample Multiplier: 1

**Instrument :**  
 ECD\_0  
**ClientSampleId :**  
 AR1254CCC500

Integration File signal 1: autoint1.e  
 Integration File signal 2: autoint2.e  
 Quant Time: Nov 25 10:41:21 2020  
 Quant Method : Z:\pestpcbsrv\HPCHEM1\ECD\_0\methods\PO112320.M  
 Quant Title : GC EXTRACTABLES  
 QLast Update : Wed Nov 25 10:04:26 2020  
 Response via : Initial Calibration  
 Integrator: ChemStation 6890 Scale Mode: Small noise peaks clipped

Volume Inj. : 2 µl  
 Signal #1 Phase : ZB-MR1 Signal #2 Phase: ZB-MR2  
 Signal #1 Info : 30Mx0.32mmx 0.50µ Signal #2 Info : 30M x 0.32mm x 0.25µm

Compound	RT#1	RT#2	Resp#1	Resp#2	ng/ml	ng/ml
-----						
-----						

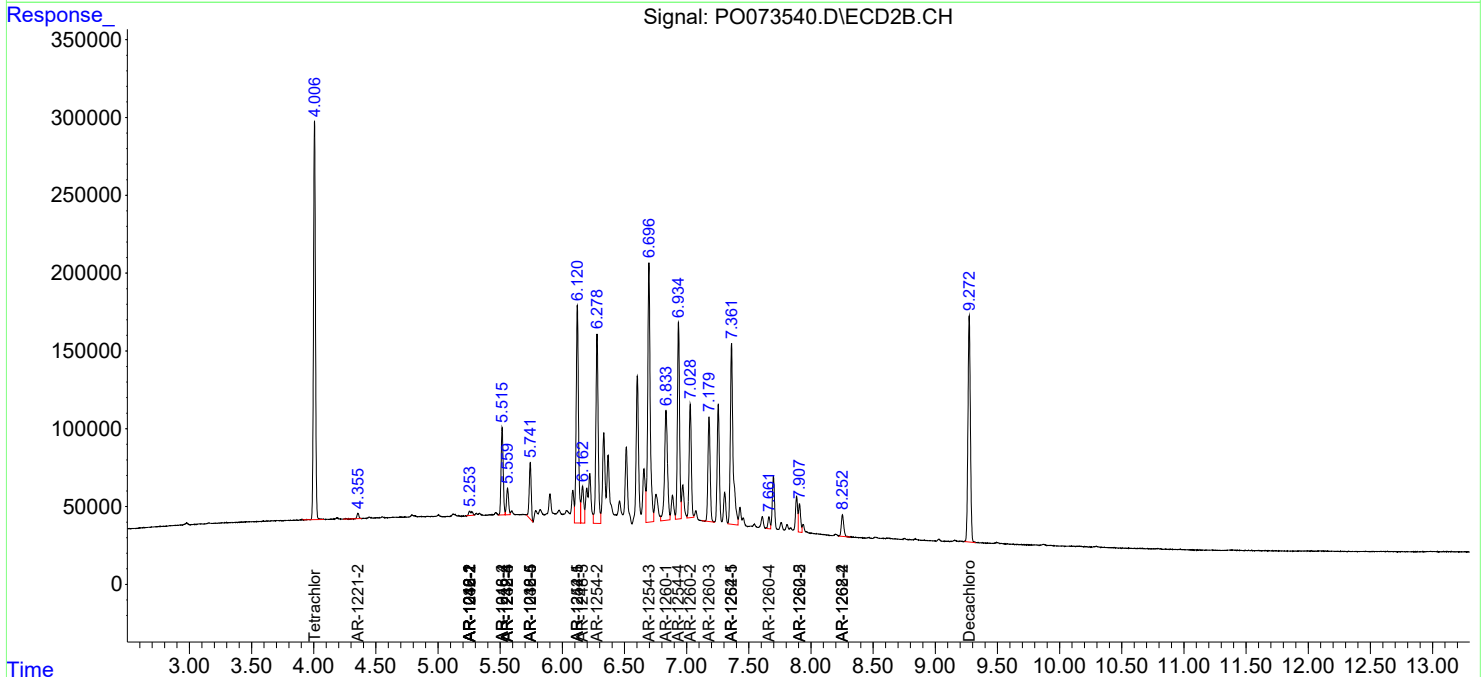
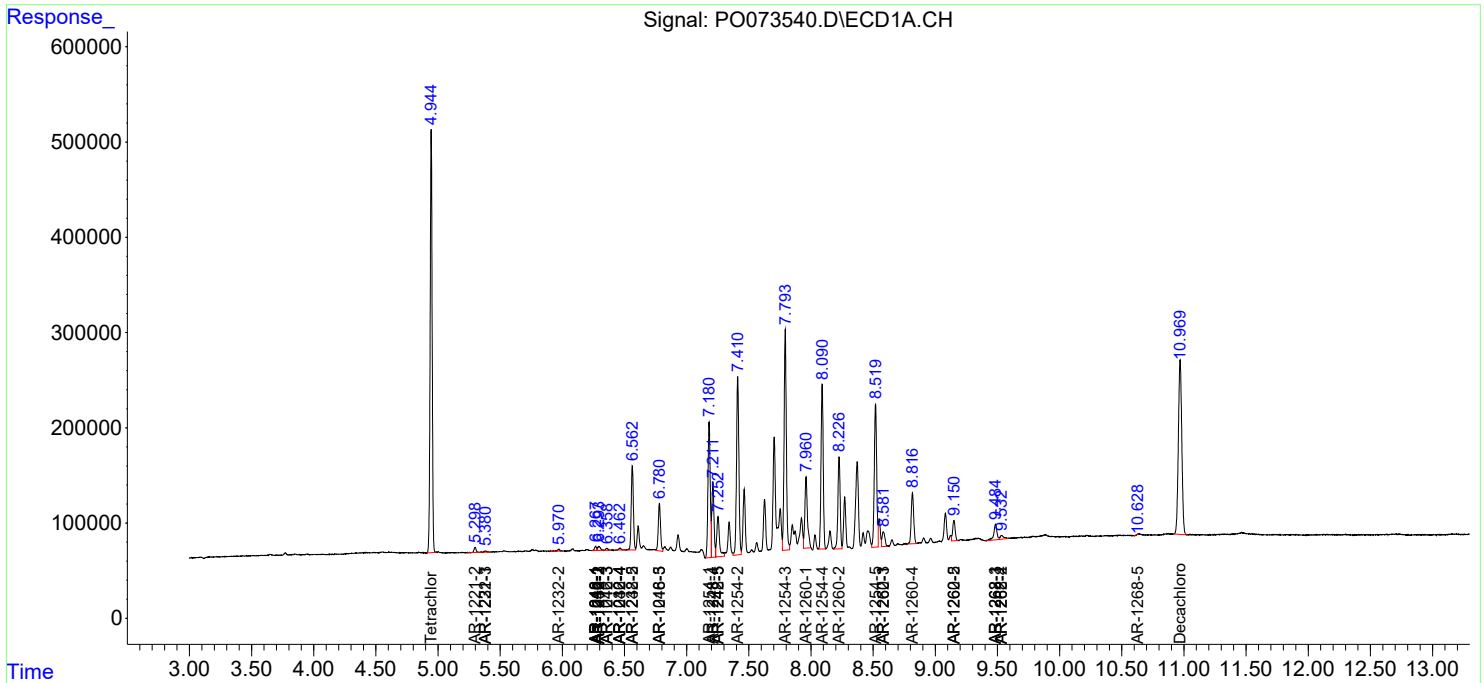
(f)=RT Delta > 1/2 Window (#)=Amounts differ by > 25% (m)=manual int.

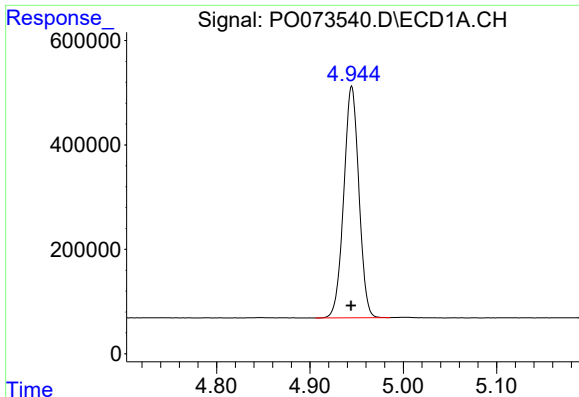
Data Path : Z:\pestpcbsrv\HPCHEM1\ECD\_O\Data\PO112420\  
 Data File : PO073540.D  
 Signal(s) : Signal #1: ECD1A.CH Signal #2: ECD2B.CH  
 Acq On : 25 Nov 2020 4:14  
 Operator : DD\AJ  
 Sample : AR1254CCC500  
 Misc :  
 ALS Vial : 6 Sample Multiplier: 1

Instrument :  
 ECD\_O  
 ClientSampled :  
 AR1254CCC500

Integration File signal 1: autoint1.e  
 Integration File signal 2: autoint2.e  
 Quant Time: Nov 25 10:41:21 2020  
 Quant Method : Z:\pestpcbsrv\HPCHEM1\ECD\_O\methods\PO112320.M  
 Quant Title : GC EXTRACTABLES  
 QLast Update : Wed Nov 25 10:04:26 2020  
 Response via : Initial Calibration  
 Integrator: ChemStation 6890 Scale Mode: Small noise peaks clipped

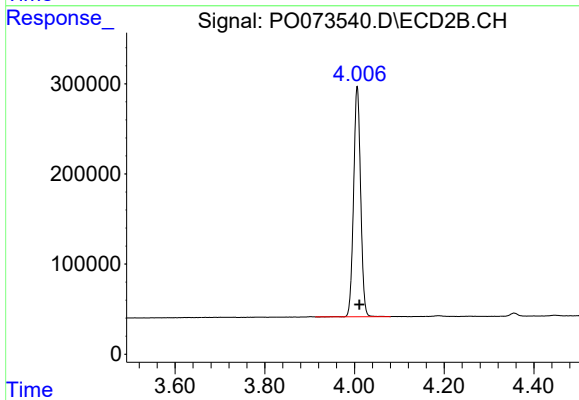
Volume Inj. : 2 µl  
 Signal #1 Phase : ZB-MR1 Signal #2 Phase: ZB-MR2  
 Signal #1 Info : 30Mx0.32mmx 0.50µ Signal #2 Info : 30M x 0.32mm x 0.25µm



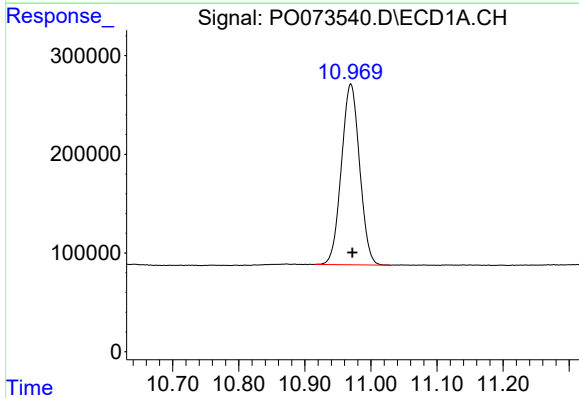


#1 Tetrachloro-m-xylene  
 R.T.: 4.945 min  
 Delta R.T.: 0.000 min  
 Response: 4997338  
 Conc: 59.74 ng/ml

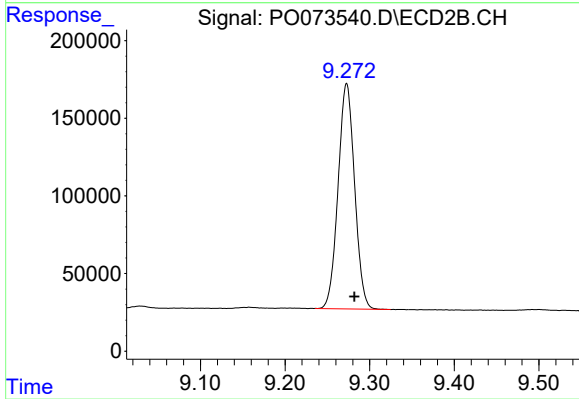
Instrument :  
 ECD\_O  
 ClientSampleId :  
 AR1254CCC500



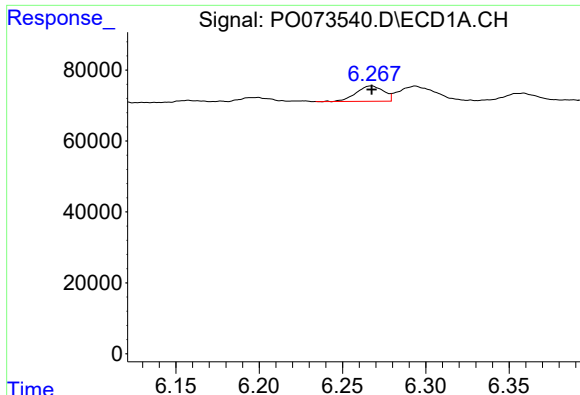
#1 Tetrachloro-m-xylene  
 R.T.: 4.006 min  
 Delta R.T.: -0.005 min  
 Response: 2786292  
 Conc: 56.83 ng/ml



#2 Decachlorobiphenyl  
 R.T.: 10.970 min  
 Delta R.T.: -0.002 min  
 Response: 3502123  
 Conc: 42.48 ng/ml



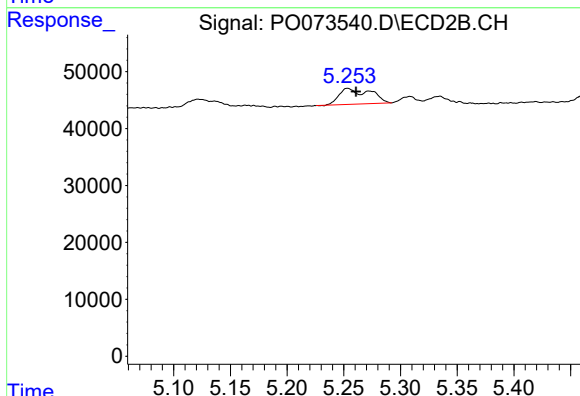
#2 Decachlorobiphenyl  
 R.T.: 9.273 min  
 Delta R.T.: -0.009 min  
 Response: 1967707  
 Conc: 42.92 ng/ml



#3 AR-1016-1

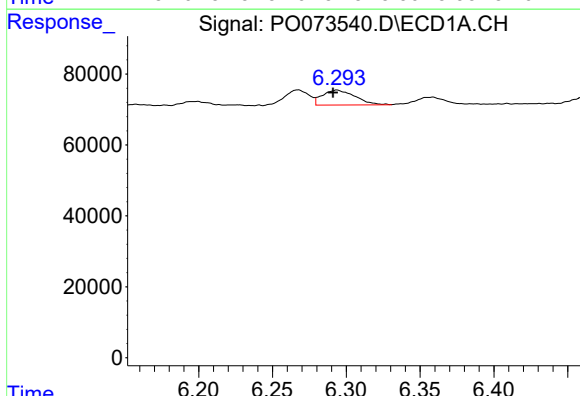
R.T.: 6.267 min  
 Delta R.T.: 0.000 min  
 Response: 50141  
 Conc: 15.23 ng/ml

Instrument :  
 ECD\_O  
 ClientSampleId :  
 AR1254CCC500



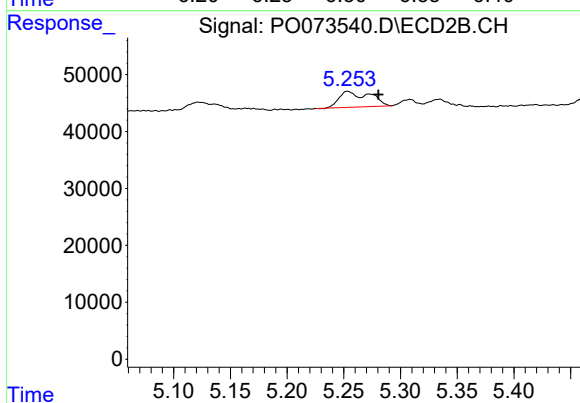
#3 AR-1016-1

R.T.: 5.254 min  
 Delta R.T.: -0.007 min  
 Response: 52256  
 Conc: 25.65 ng/ml



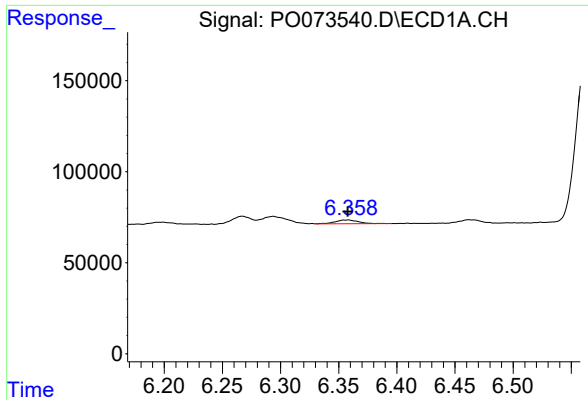
#4 AR-1016-2

R.T.: 6.294 min  
 Delta R.T.: 0.003 min  
 Response: 65222  
 Conc: 14.17 ng/ml



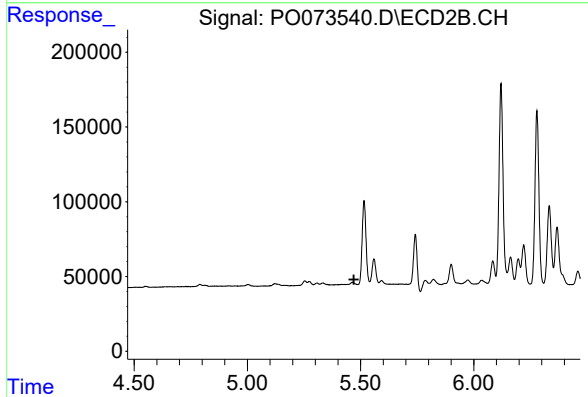
#4 AR-1016-2

R.T.: 5.254 min  
 Delta R.T.: -0.027 min  
 Response: 52256  
 Conc: 18.68 ng/ml

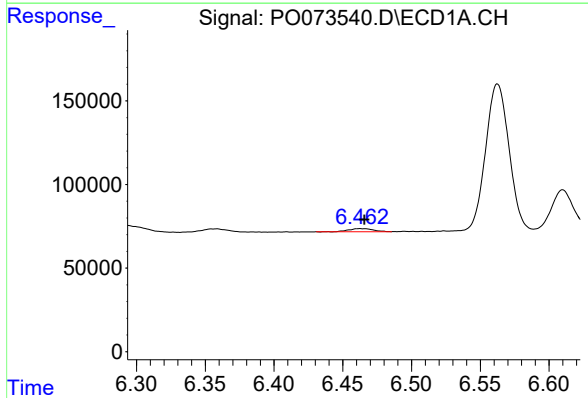


#5 AR-1016-3  
 R.T.: 6.358 min  
 Delta R.T.: 0.000 min  
 Response: 28743  
 Conc: 10.50 ng/ml

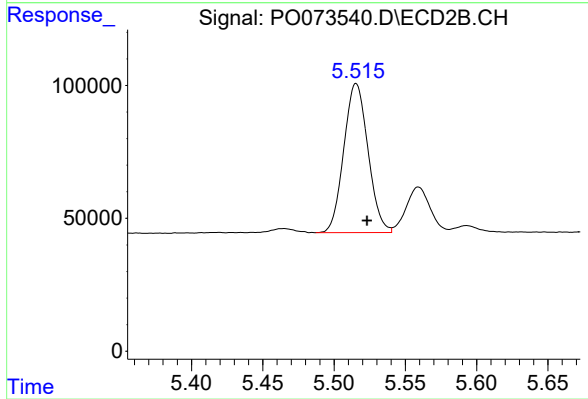
Instrument :  
 ECD\_O  
 ClientSampleId :  
 AR1254CCC500



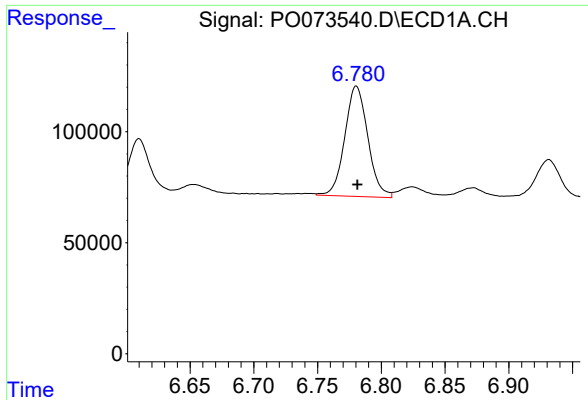
#5 AR-1016-3  
 R.T.: 0.000 min  
 Exp R.T. : 5.471 min  
 Response: 0  
 Conc: N.D.



#6 AR-1016-4  
 R.T.: 6.462 min  
 Delta R.T.: -0.003 min  
 Response: 22984  
 Conc: 10.07 ng/ml

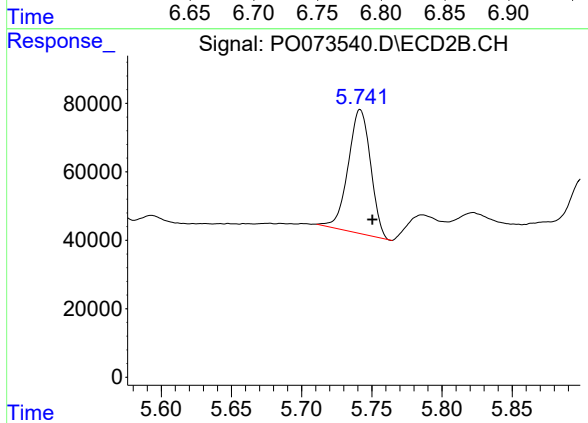


#6 AR-1016-4  
 R.T.: 5.516 min  
 Delta R.T.: -0.008 min  
 Response: 663064  
 Conc: 557.92 ng/ml

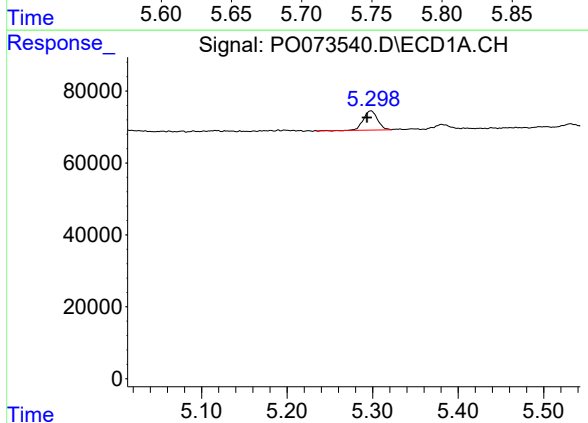


#7 AR-1016-5  
 R.T.: 6.780 min  
 Delta R.T.: 0.000 min  
 Response: 626196  
 Conc: 278.51 ng/ml

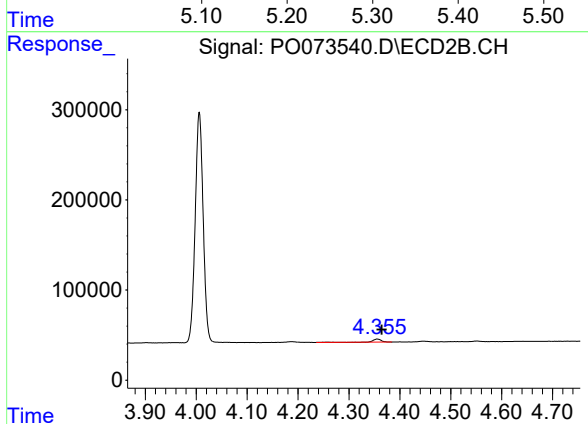
Instrument :  
 ECD\_O  
 ClientSampleId :  
 AR1254CCC500



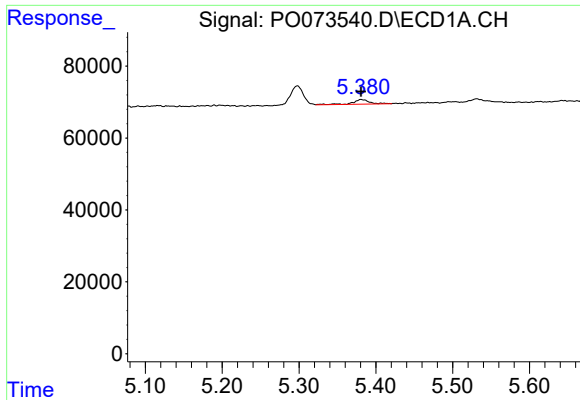
#7 AR-1016-5  
 R.T.: 5.742 min  
 Delta R.T.: -0.009 min  
 Response: 403006  
 Conc: 267.72 ng/ml



#9 AR-1221-2  
 R.T.: 5.298 min  
 Delta R.T.: 0.004 min  
 Response: 61447  
 Conc: 87.37 ng/ml



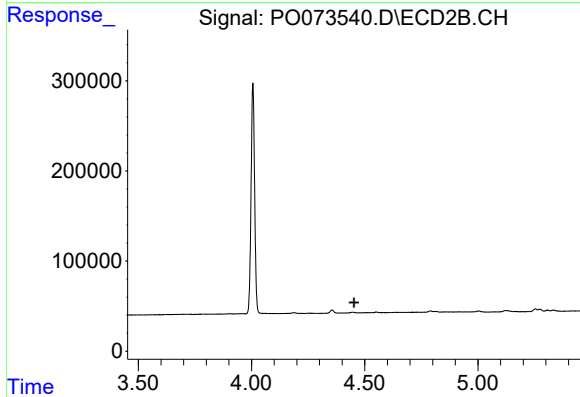
#9 AR-1221-2  
 R.T.: 4.356 min  
 Delta R.T.: -0.009 min  
 Response: 40952  
 Conc: 101.31 ng/ml



#10 AR-1221-3

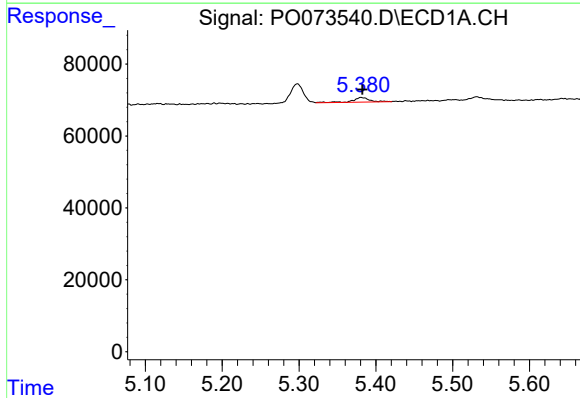
R.T.: 5.381 min  
 Delta R.T.: 0.000 min  
 Response: 19317  
 Conc: 8.62 ng/ml

Instrument :  
 ECD\_O  
 ClientSampleId :  
 AR1254CCC500



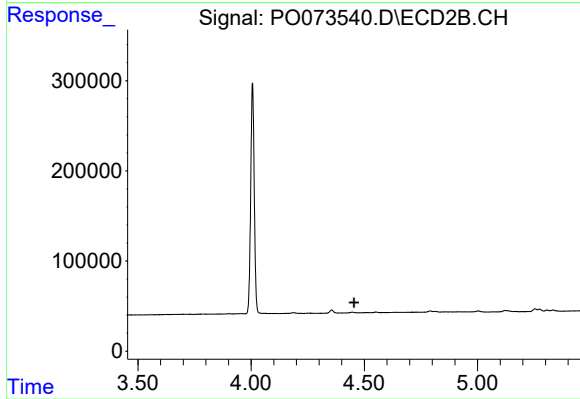
#10 AR-1221-3

R.T.: 0.000 min  
 Exp R.T. : 4.453 min  
 Response: 0  
 Conc: N.D.



#11 AR-1232-1

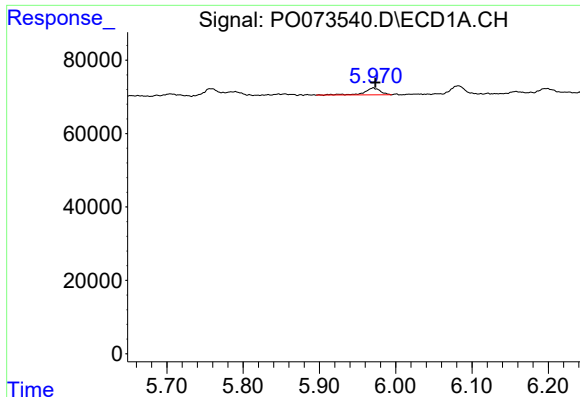
R.T.: 5.381 min  
 Delta R.T.: -0.002 min  
 Response: 19317  
 Conc: 10.47 ng/ml



#11 AR-1232-1

R.T.: 0.000 min  
 Exp R.T. : 4.454 min  
 Response: 0  
 Conc: N.D.

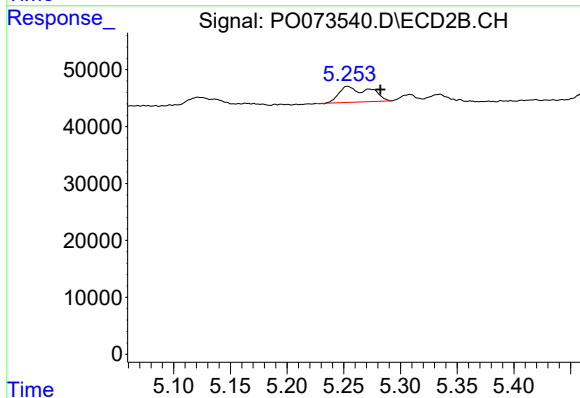




#12 AR-1232-2

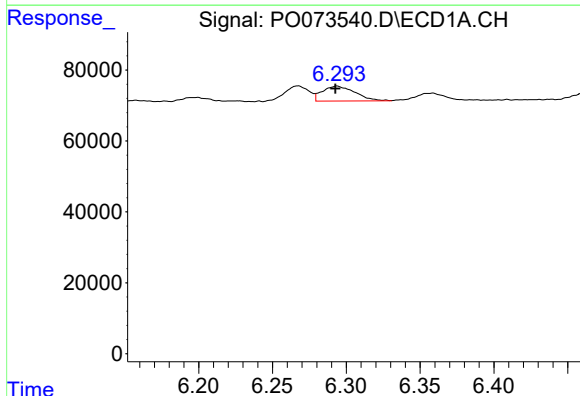
R.T.: 5.970 min  
 Delta R.T.: -0.003 min  
 Response: 28093  
 Conc: 29.52 ng/ml

Instrument :  
 ECD\_O  
 ClientSampleId :  
 AR1254CCC500



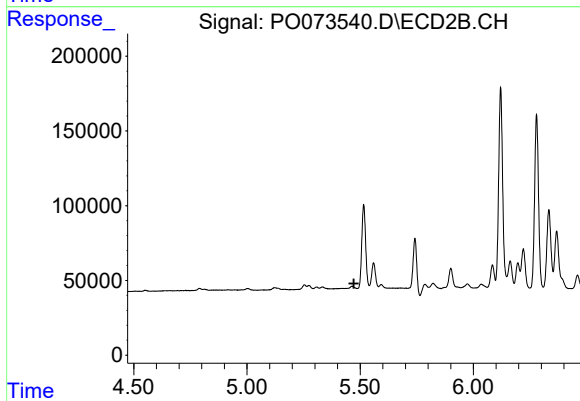
#12 AR-1232-2

R.T.: 5.254 min  
 Delta R.T.: -0.028 min  
 Response: 52256  
 Conc: 43.72 ng/ml



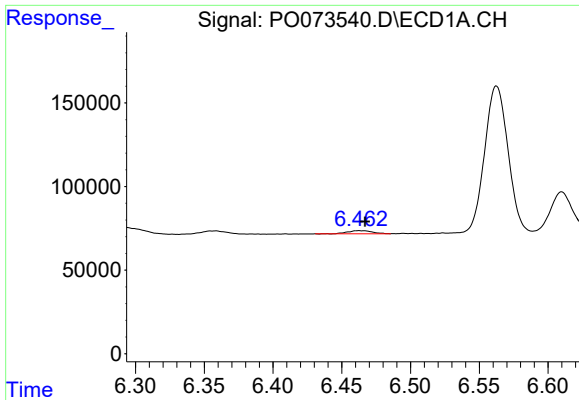
#13 AR-1232-3

R.T.: 6.294 min  
 Delta R.T.: 0.001 min  
 Response: 65222  
 Conc: 33.34 ng/ml



#13 AR-1232-3

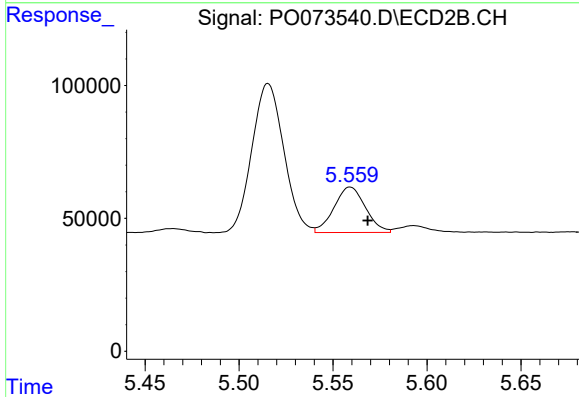
R.T.: 0.000 min  
 Exp R.T. : 5.472 min  
 Response: 0  
 Conc: N.D.



#14 AR-1232-4

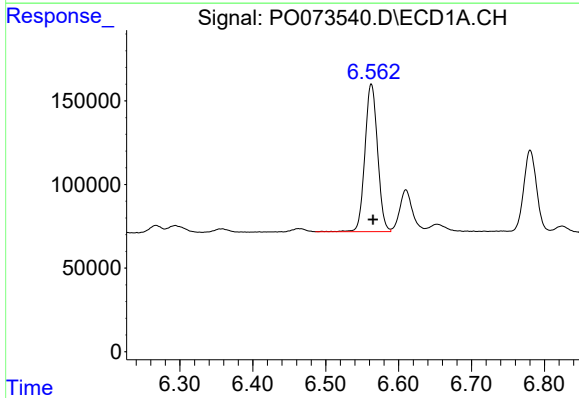
R.T.: 6.462 min  
 Delta R.T.: -0.005 min  
 Response: 22984  
 Conc: 23.25 ng/ml

Instrument :  
 ECD\_O  
 ClientSampleId :  
 AR1254CCC500



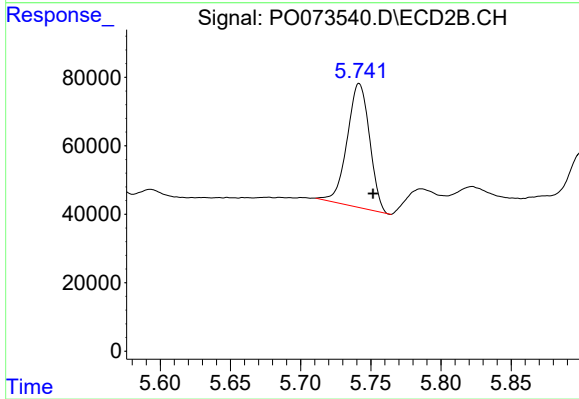
#14 AR-1232-4

R.T.: 5.559 min  
 Delta R.T.: -0.009 min  
 Response: 198959  
 Conc: 369.04 ng/ml



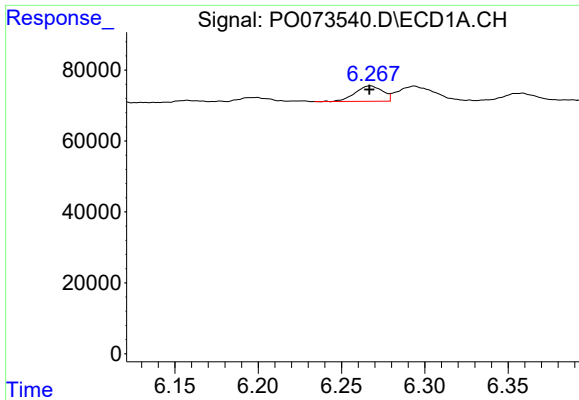
#15 AR-1232-5

R.T.: 6.563 min  
 Delta R.T.: -0.002 min  
 Response: 1062761  
 Conc: 1578.55 ng/ml



#15 AR-1232-5

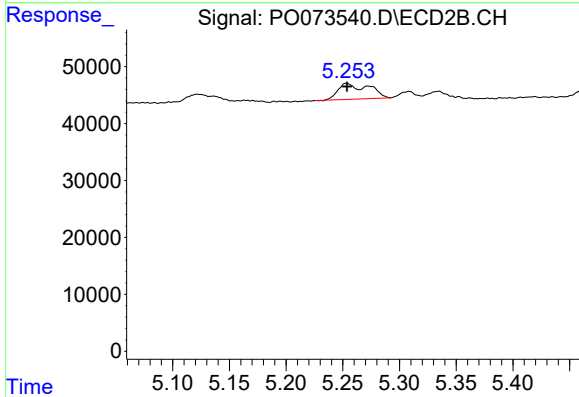
R.T.: 5.742 min  
 Delta R.T.: -0.010 min  
 Response: 403006  
 Conc: 682.16 ng/ml



#16 AR-1242-1

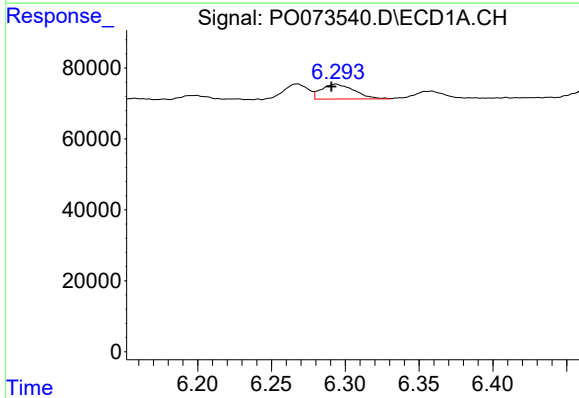
R.T.: 6.267 min  
 Delta R.T.: 0.000 min  
 Response: 50141  
 Conc: 19.01 ng/ml

Instrument :  
 ECD\_O  
 ClientSampleId :  
 AR1254CCC500



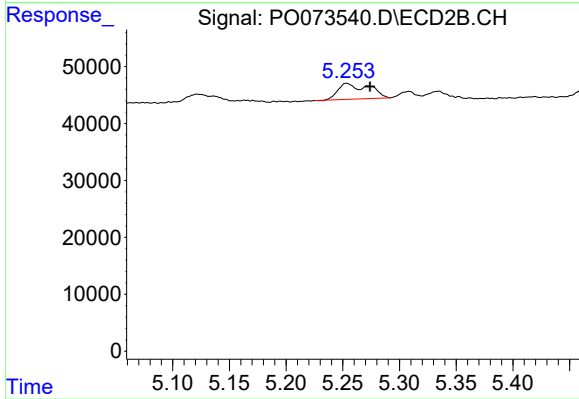
#16 AR-1242-1

R.T.: 5.254 min  
 Delta R.T.: 0.000 min  
 Response: 52256  
 Conc: 31.95 ng/ml



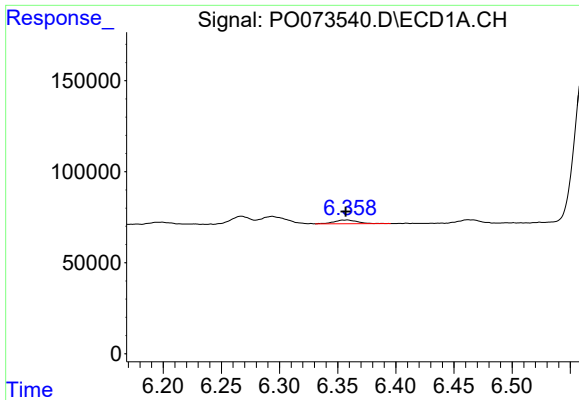
#17 AR-1242-2

R.T.: 6.294 min  
 Delta R.T.: 0.003 min  
 Response: 65222  
 Conc: 17.84 ng/ml



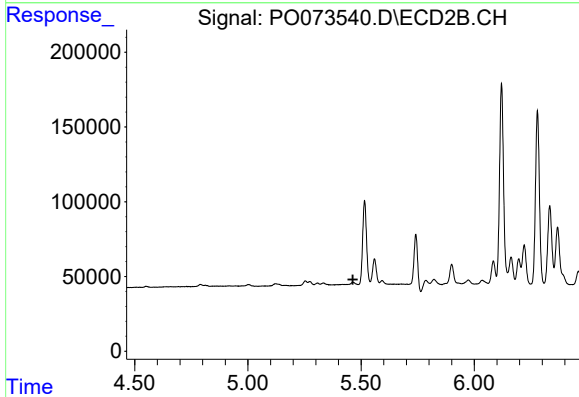
#17 AR-1242-2

R.T.: 5.254 min  
 Delta R.T.: -0.020 min  
 Response: 52256  
 Conc: 23.10 ng/ml

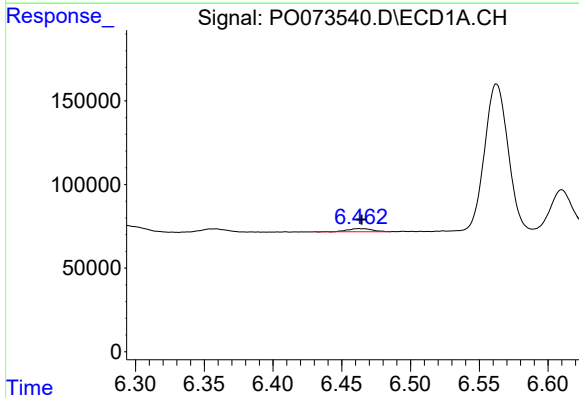


#18 AR-1242-3  
 R.T.: 6.358 min  
 Delta R.T.: 0.001 min  
 Response: 28743  
 Conc: 13.03 ng/ml

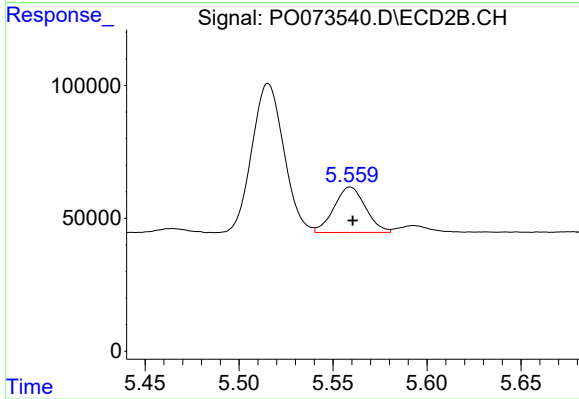
**Instrument :**  
 ECD\_O  
**ClientSampleId :**  
 AR1254CCC500



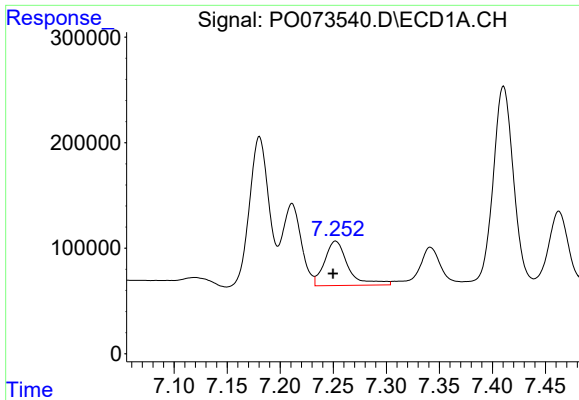
#18 AR-1242-3  
 R.T.: 0.000 min  
 Exp R.T. : 5.464 min  
 Response: 0  
 Conc: N.D.



#19 AR-1242-4  
 R.T.: 6.462 min  
 Delta R.T.: -0.002 min  
 Response: 22984  
 Conc: 12.38 ng/ml

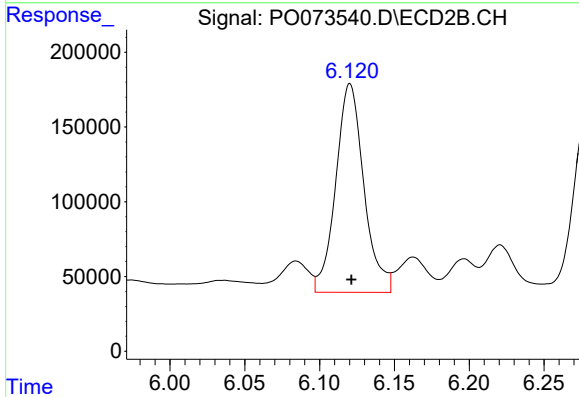


#19 AR-1242-4  
 R.T.: 5.559 min  
 Delta R.T.: -0.001 min  
 Response: 198959  
 Conc: 181.02 ng/ml

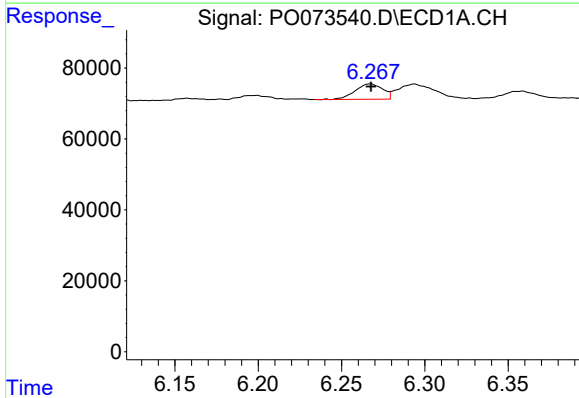


#20 AR-1242-5  
 R.T.: 7.252 min  
 Delta R.T.: 0.002 min  
 Response: 654459  
 Conc: 311.15 ng/ml

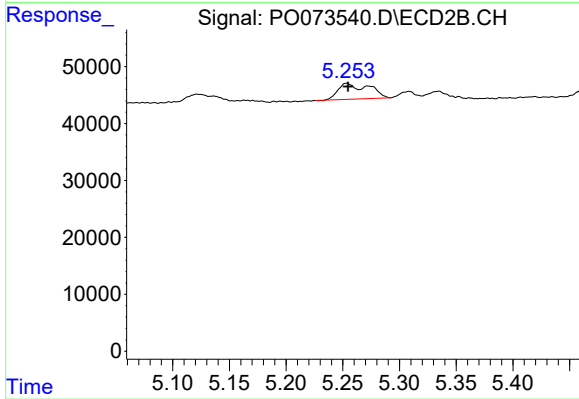
**Instrument :**  
 ECD\_O  
**ClientSampleId :**  
 AR1254CCC500



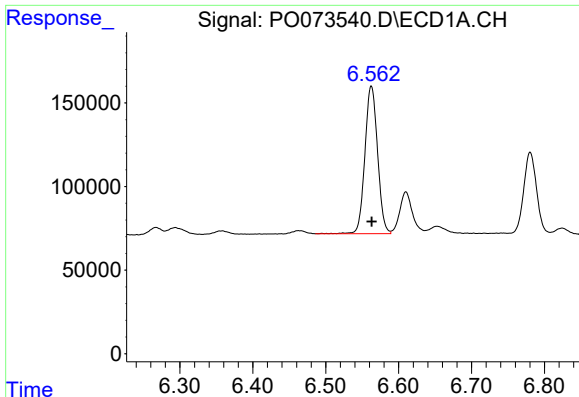
#20 AR-1242-5  
 R.T.: 6.120 min  
 Delta R.T.: 0.000 min  
 Response: 1823754  
 Conc: 1177.85 ng/ml



#21 AR-1248-1  
 R.T.: 6.267 min  
 Delta R.T.: 0.000 min  
 Response: 50141  
 Conc: 25.08 ng/ml



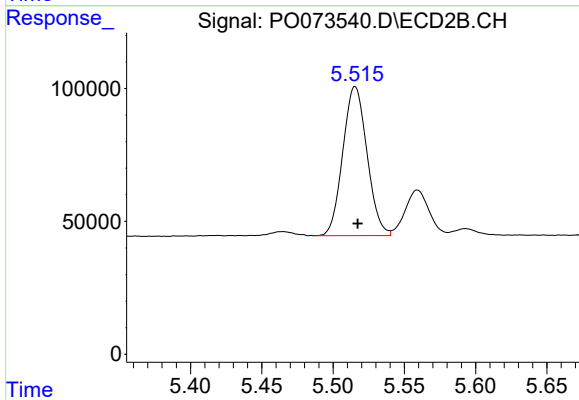
#21 AR-1248-1  
 R.T.: 5.254 min  
 Delta R.T.: 0.000 min  
 Response: 52256  
 Conc: 41.67 ng/ml



#22 AR-1248-2

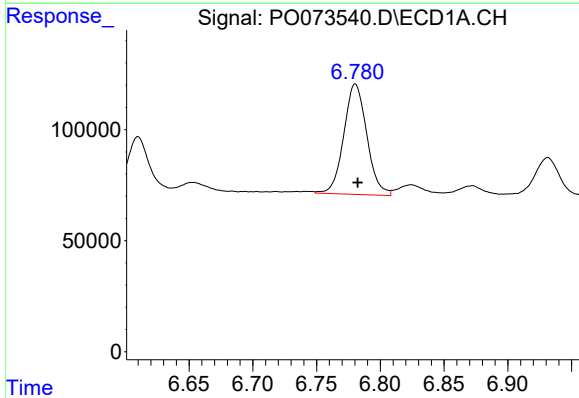
R.T.: 6.563 min  
 Delta R.T.: 0.000 min  
 Response: 1062761  
 Conc: 411.09 ng/ml

Instrument :  
 ECD\_O  
 ClientSampleId :  
 AR1254CCC500



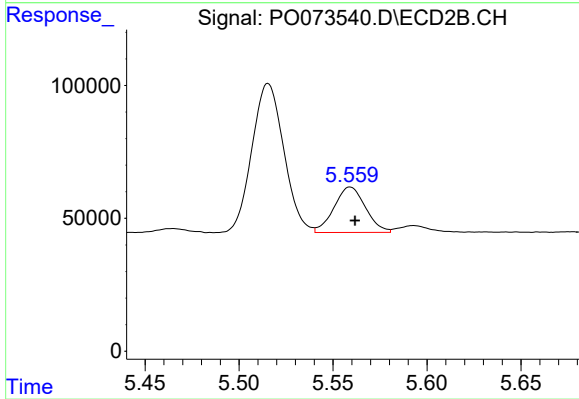
#22 AR-1248-2

R.T.: 5.516 min  
 Delta R.T.: -0.002 min  
 Response: 663064  
 Conc: 392.08 ng/ml



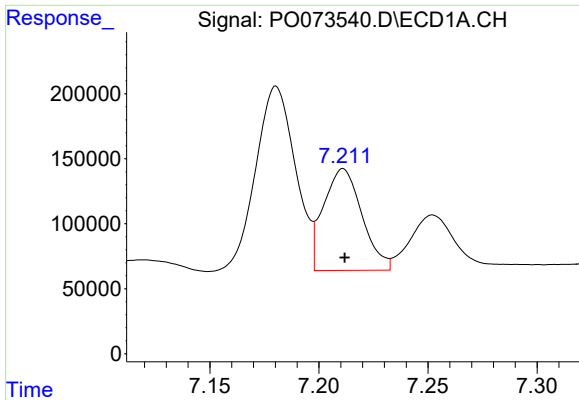
#23 AR-1248-3

R.T.: 6.780 min  
 Delta R.T.: -0.002 min  
 Response: 626196  
 Conc: 204.33 ng/ml



#23 AR-1248-3

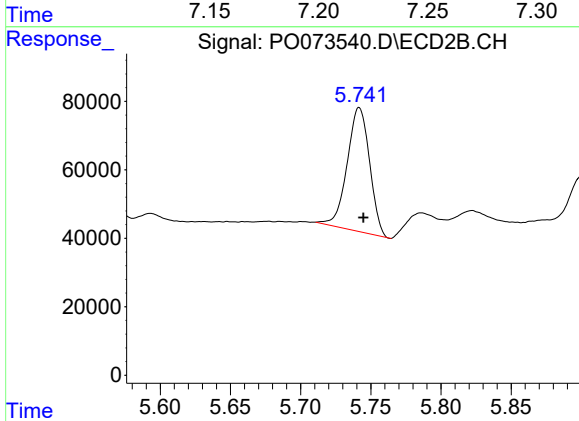
R.T.: 5.559 min  
 Delta R.T.: -0.002 min  
 Response: 198959  
 Conc: 116.59 ng/ml



#24 AR-1248-4

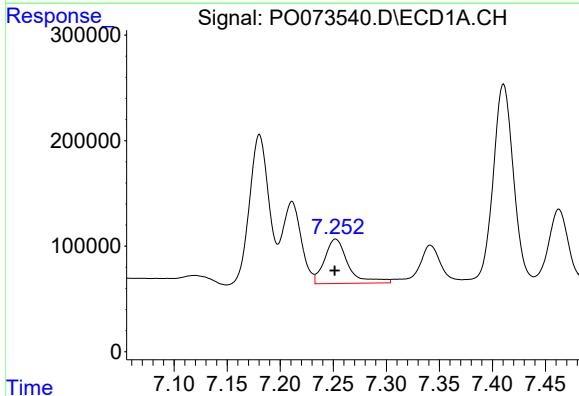
R.T.: 7.211 min  
 Delta R.T.: 0.000 min  
 Response: 960036  
 Conc: 257.36 ng/ml

Instrument :  
 ECD\_O  
 ClientSampleId :  
 AR1254CCC500



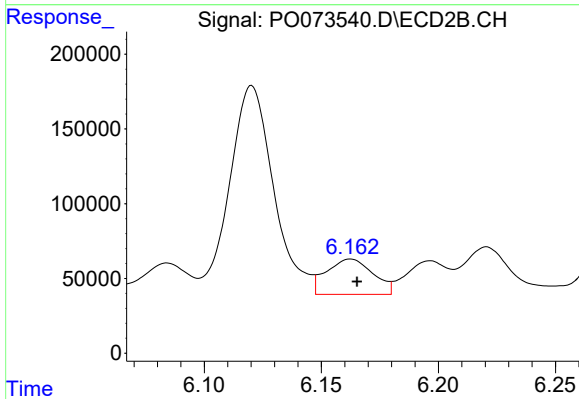
#24 AR-1248-4

R.T.: 5.742 min  
 Delta R.T.: -0.003 min  
 Response: 403006  
 Conc: 196.04 ng/ml



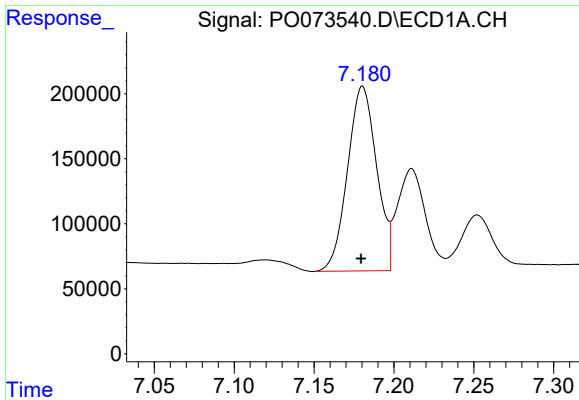
#25 AR-1248-5

R.T.: 7.252 min  
 Delta R.T.: 0.000 min  
 Response: 654459  
 Conc: 182.91 ng/ml



#25 AR-1248-5

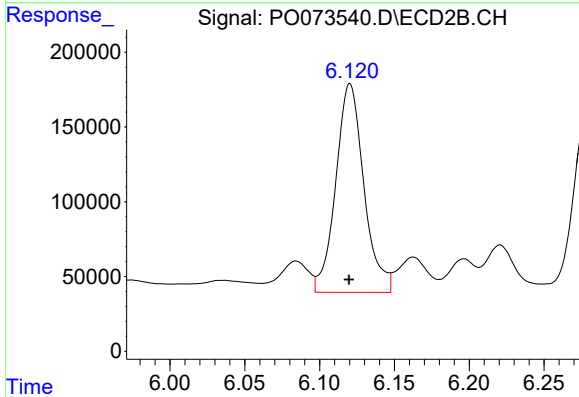
R.T.: 6.162 min  
 Delta R.T.: -0.003 min  
 Response: 326874  
 Conc: 147.21 ng/ml



#26 AR-1254-1

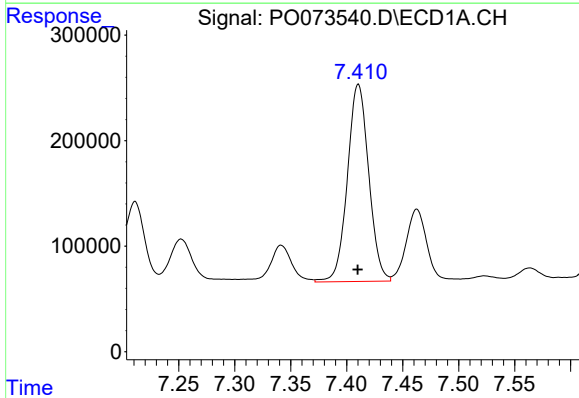
R.T.: 7.180 min  
 Delta R.T.: 0.000 min  
 Response: 1802822  
 Conc: 521.30 ng/ml

Instrument :  
 ECD\_O  
 ClientSampleId :  
 AR1254CCC500



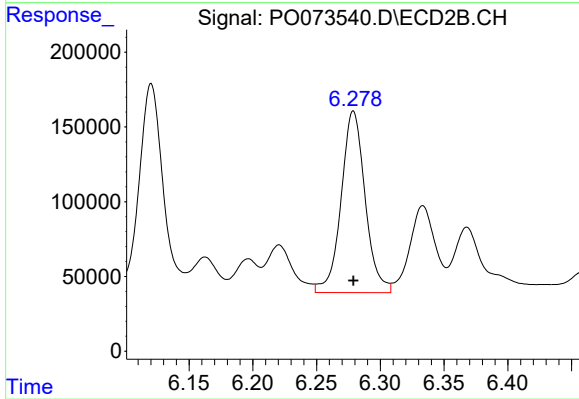
#26 AR-1254-1

R.T.: 6.120 min  
 Delta R.T.: 0.000 min  
 Response: 1823754  
 Conc: 585.70 ng/ml



#27 AR-1254-2

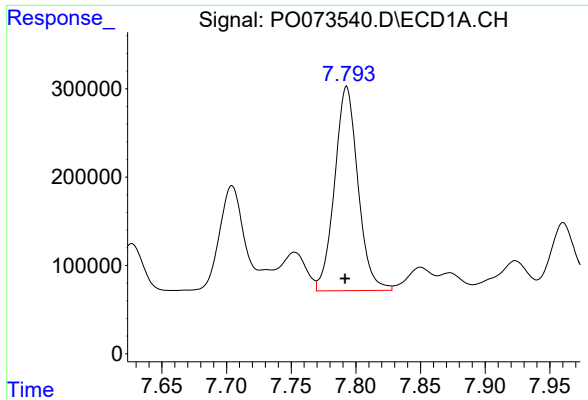
R.T.: 7.410 min  
 Delta R.T.: 0.000 min  
 Response: 2477375  
 Conc: 454.73 ng/ml



#27 AR-1254-2

R.T.: 6.279 min  
 Delta R.T.: 0.000 min  
 Response: 1593775  
 Conc: 583.80 ng/ml

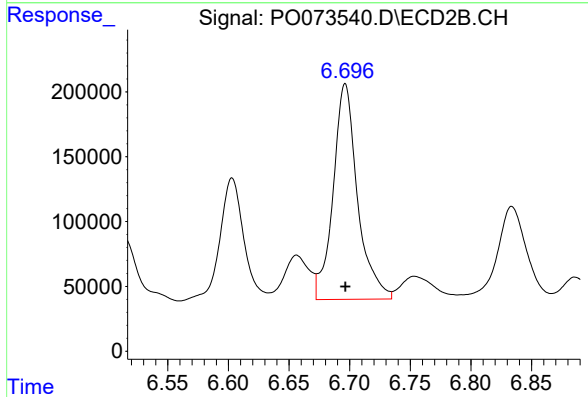




#28 AR-1254-3

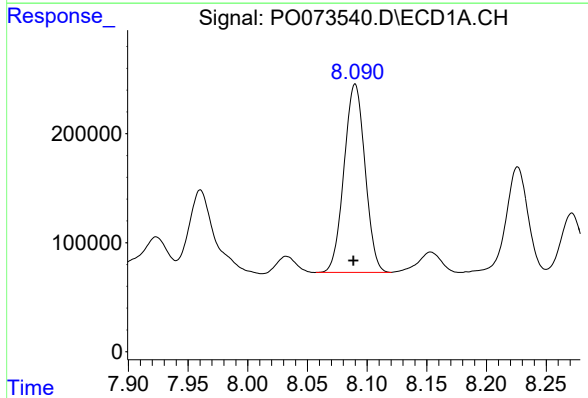
R.T.: 7.793 min  
 Delta R.T.: 0.001 min  
 Response: 2906503  
 Conc: 512.86 ng/ml

Instrument :  
 ECD\_O  
 ClientSampleId :  
 AR1254CCC500



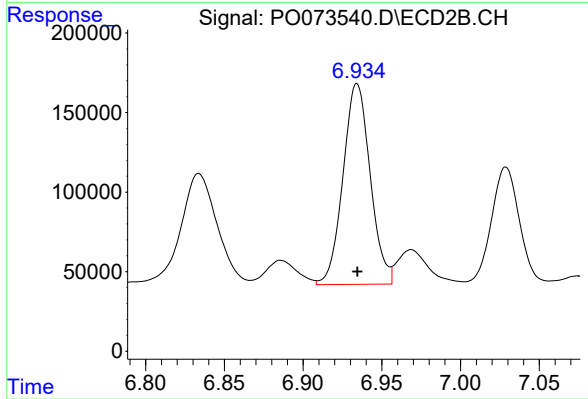
#28 AR-1254-3

R.T.: 6.696 min  
 Delta R.T.: 0.000 min  
 Response: 2327640  
 Conc: 550.37 ng/ml



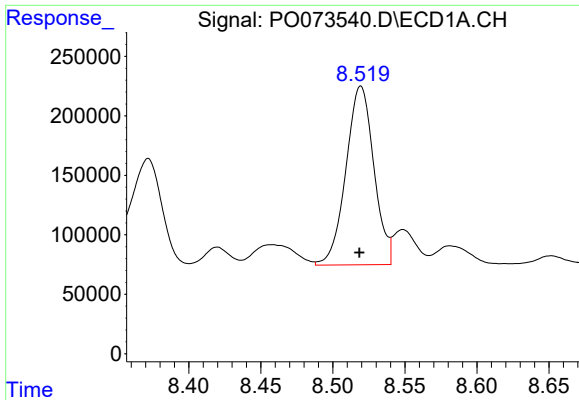
#29 AR-1254-4

R.T.: 8.090 min  
 Delta R.T.: 0.002 min  
 Response: 2117504  
 Conc: 437.67 ng/ml



#29 AR-1254-4

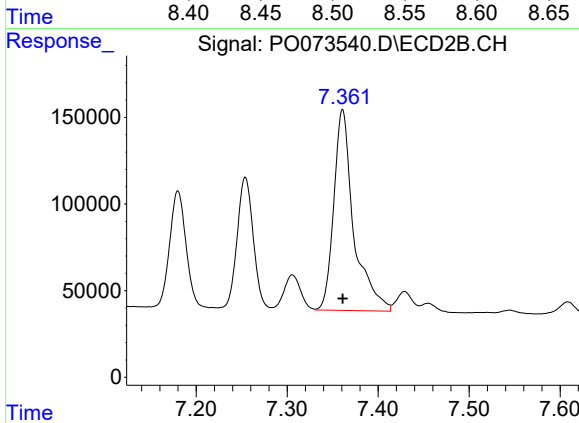
R.T.: 6.934 min  
 Delta R.T.: 0.000 min  
 Response: 1518997  
 Conc: 526.14 ng/ml



#30 AR-1254-5

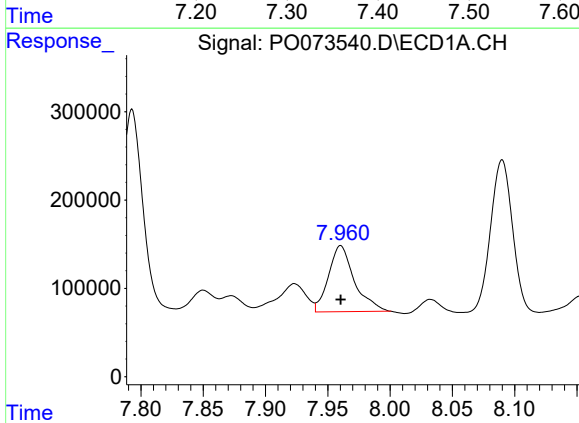
R.T.: 8.519 min  
 Delta R.T.: 0.001 min  
 Response: 2028437  
 Conc: 426.11 ng/ml

Instrument :  
 ECD\_O  
 ClientSampleId :  
 AR1254CCC500



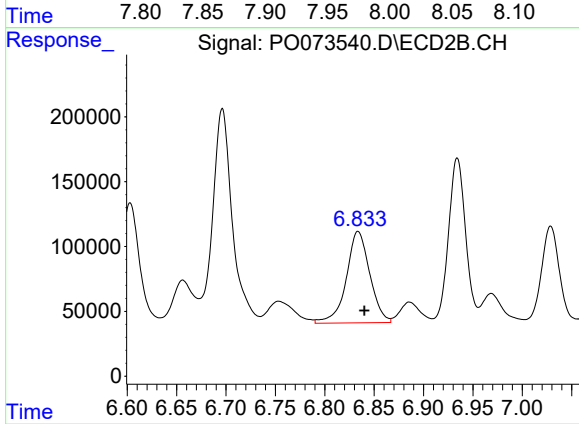
#30 AR-1254-5

R.T.: 7.361 min  
 Delta R.T.: 0.000 min  
 Response: 1764931  
 Conc: 477.89 ng/ml



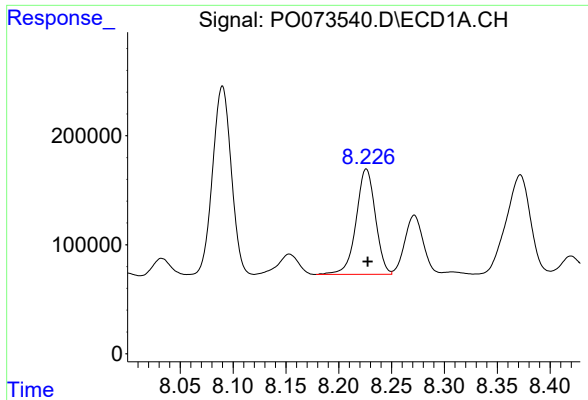
#31 AR-1260-1

R.T.: 7.960 min  
 Delta R.T.: 0.000 min  
 Response: 1087631  
 Conc: 269.53 ng/ml



#31 AR-1260-1

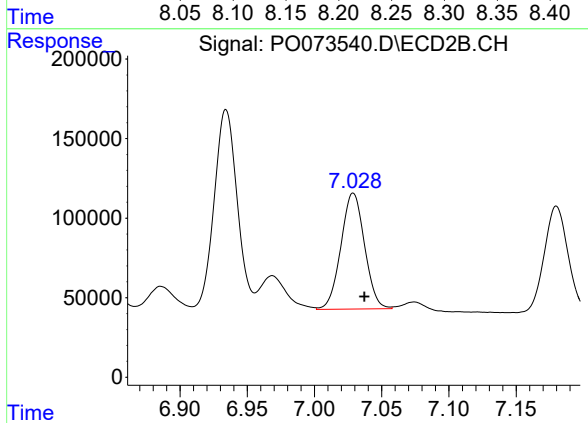
R.T.: 6.834 min  
 Delta R.T.: -0.006 min  
 Response: 1165742  
 Conc: 433.88 ng/ml



#32 AR-1260-2

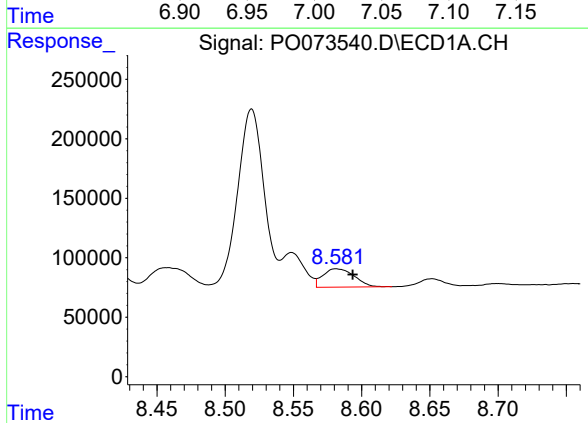
R.T.: 8.226 min  
 Delta R.T.: -0.001 min  
 Response: 1225776  
 Conc: 223.04 ng/ml

Instrument :  
 ECD\_O  
 ClientSampleId :  
 AR1254CCC500



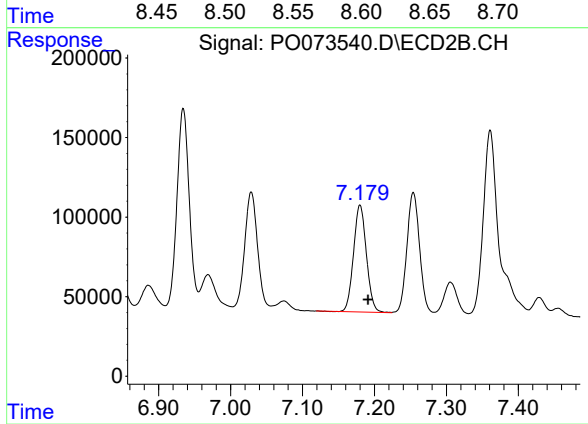
#32 AR-1260-2

R.T.: 7.029 min  
 Delta R.T.: -0.008 min  
 Response: 890344  
 Conc: 266.93 ng/ml



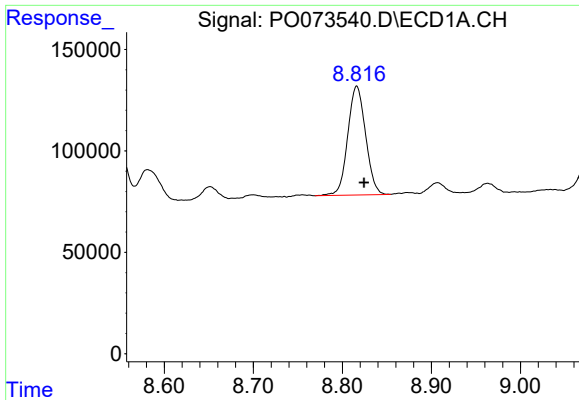
#33 AR-1260-3

R.T.: 8.581 min  
 Delta R.T.: -0.012 min  
 Response: 245507  
 Conc: 55.33 ng/ml



#33 AR-1260-3

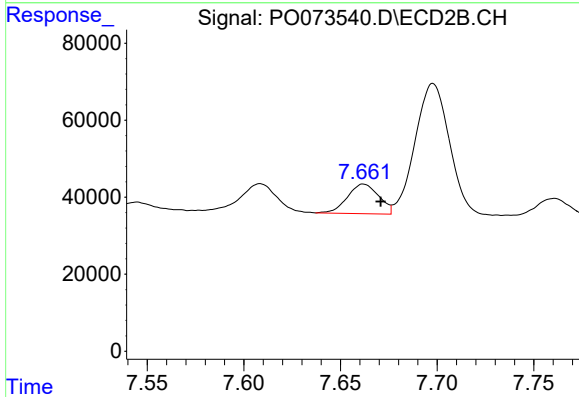
R.T.: 7.180 min  
 Delta R.T.: -0.011 min  
 Response: 835009  
 Conc: 270.30 ng/ml



#34 AR-1260-4

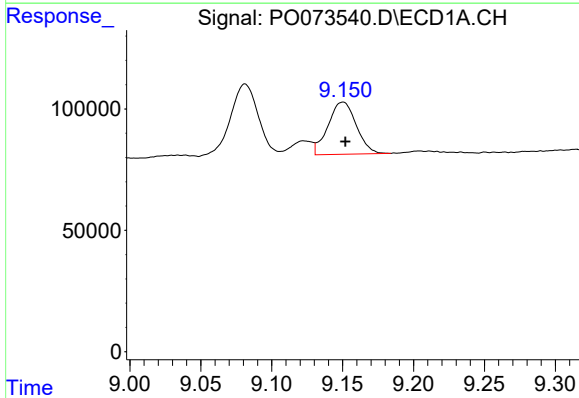
R.T.: 8.816 min  
 Delta R.T.: -0.008 min  
 Response: 747059  
 Conc: 173.08 ng/ml

Instrument :  
 ECD\_O  
 ClientSampleId :  
 AR1254CCC500



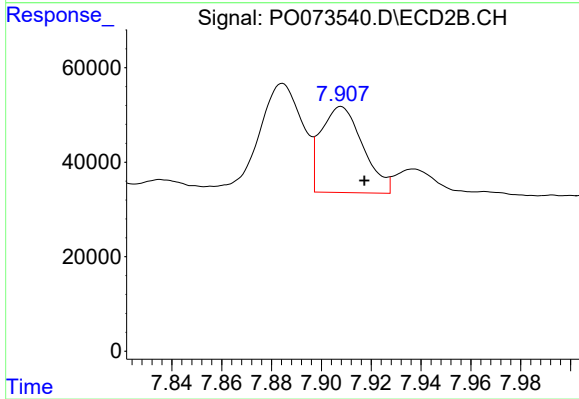
#34 AR-1260-4

R.T.: 7.662 min  
 Delta R.T.: -0.009 min  
 Response: 86547  
 Conc: 35.17 ng/ml



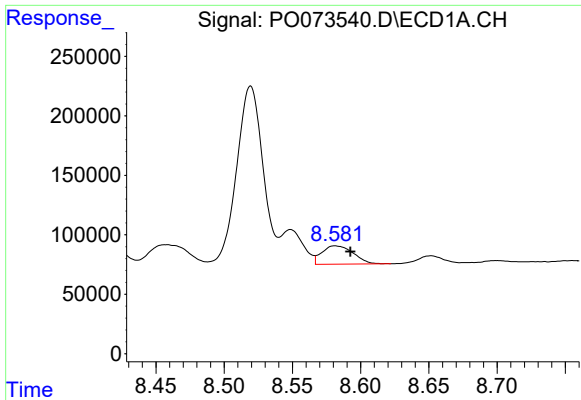
#35 AR-1260-5

R.T.: 9.150 min  
 Delta R.T.: -0.002 min  
 Response: 297047  
 Conc: 30.08 ng/ml



#35 AR-1260-5

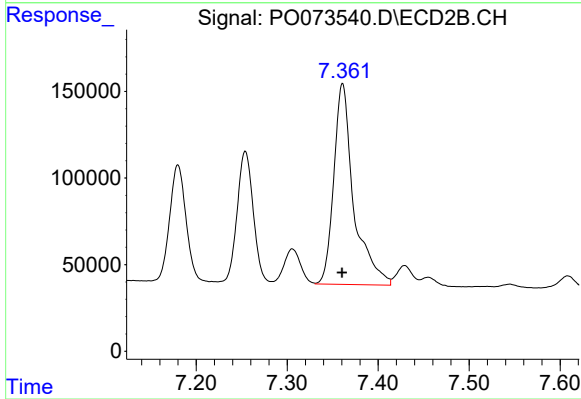
R.T.: 7.908 min  
 Delta R.T.: -0.010 min  
 Response: 212735  
 Conc: 34.34 ng/ml



#36 AR-1262-1

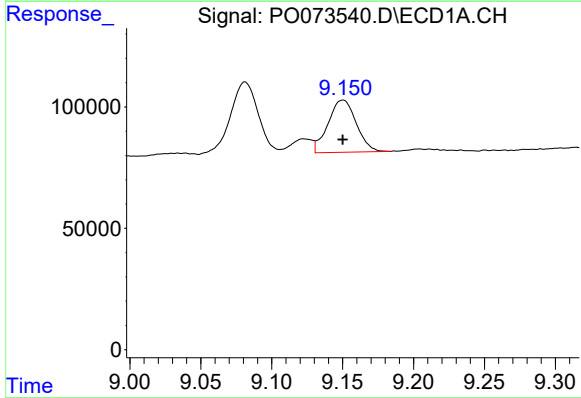
R.T.: 8.581 min  
 Delta R.T.: -0.011 min  
 Response: 245507  
 Conc: 39.32 ng/ml

Instrument :  
 ECD\_O  
 ClientSampleId :  
 AR1254CCC500



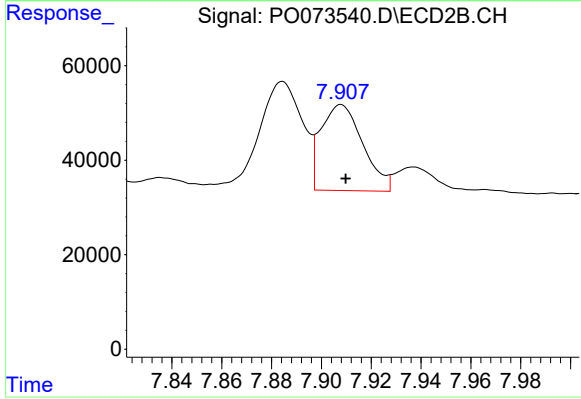
#36 AR-1262-1

R.T.: 7.361 min  
 Delta R.T.: 0.000 min  
 Response: 1764931  
 Conc: 910.73 ng/ml



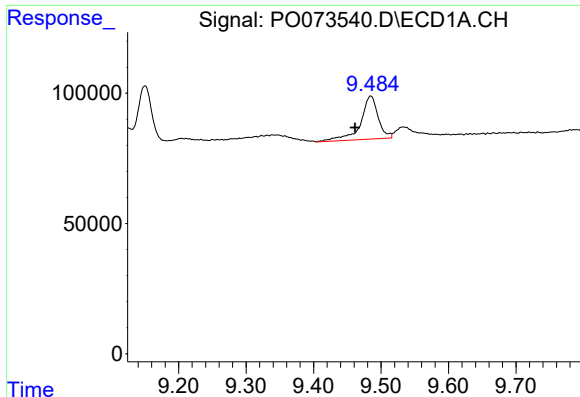
#37 AR-1262-2

R.T.: 9.150 min  
 Delta R.T.: 0.000 min  
 Response: 297047  
 Conc: 27.46 ng/ml



#37 AR-1262-2

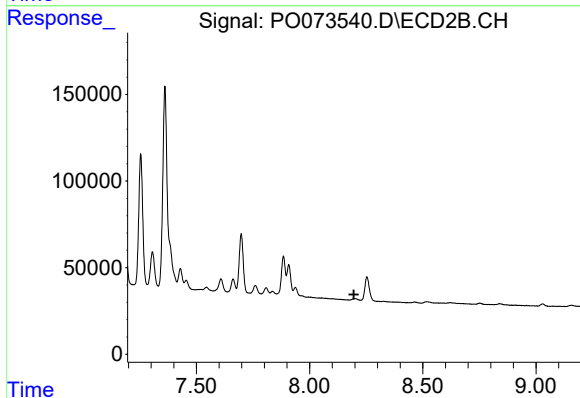
R.T.: 7.908 min  
 Delta R.T.: -0.002 min  
 Response: 212735  
 Conc: 32.45 ng/ml



#38 AR-1262-3

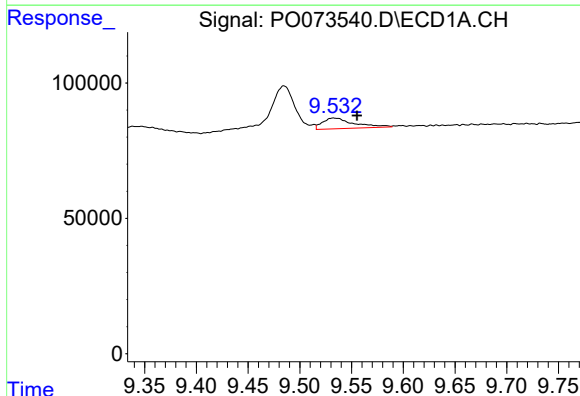
R.T.: 9.485 min  
 Delta R.T.: 0.023 min  
 Response: 298334  
 Conc: 40.65 ng/ml

Instrument :  
 ECD\_O  
 ClientSampleId :  
 AR1254CCC500



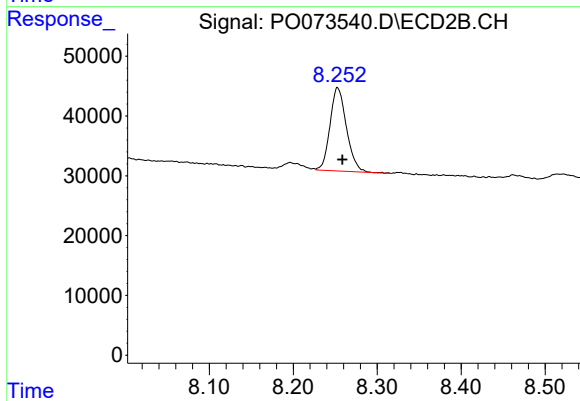
#38 AR-1262-3

R.T.: 0.000 min  
 Exp R.T. : 8.195 min  
 Response: 0  
 Conc: N.D.



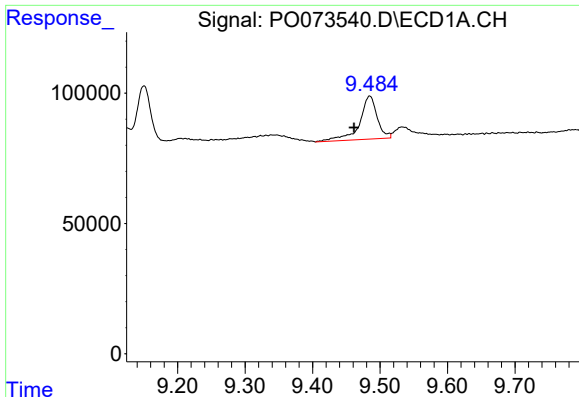
#39 AR-1262-4

R.T.: 9.533 min  
 Delta R.T.: -0.023 min  
 Response: 83396  
 Conc: 15.15 ng/ml



#39 AR-1262-4

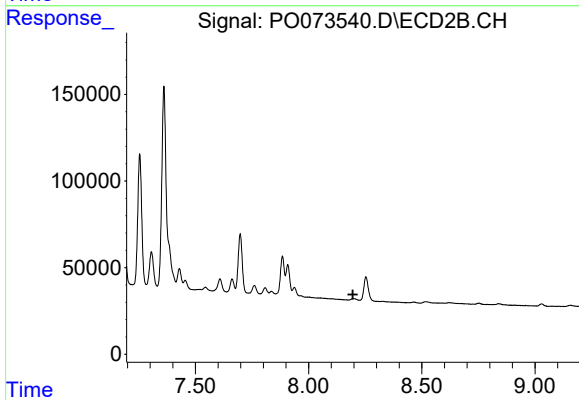
R.T.: 8.253 min  
 Delta R.T.: -0.005 min  
 Response: 189744  
 Conc: 39.74 ng/ml



#41 AR-1268-1

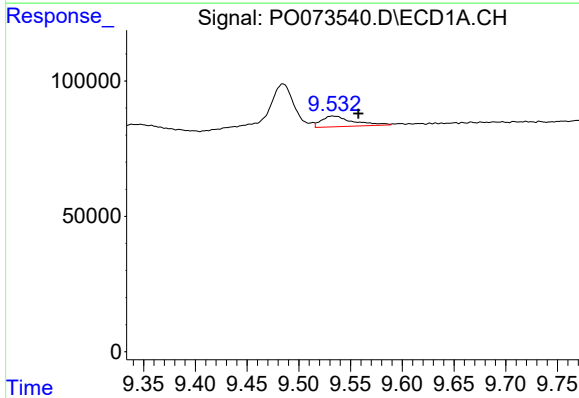
R.T.: 9.485 min  
 Delta R.T.: 0.023 min  
 Response: 298334  
 Conc: 21.36 ng/ml

Instrument :  
 ECD\_O  
 ClientSampleId :  
 AR1254CCC500



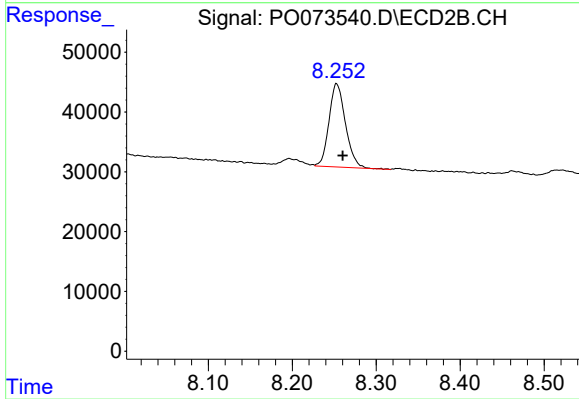
#41 AR-1268-1

R.T.: 0.000 min  
 Exp R.T. : 8.196 min  
 Response: 0  
 Conc: N.D.



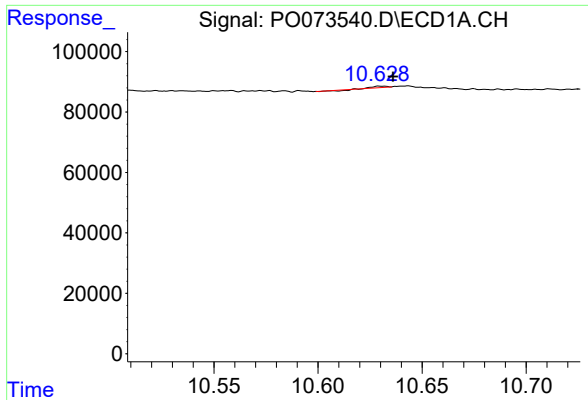
#42 AR-1268-2

R.T.: 9.533 min  
 Delta R.T.: -0.025 min  
 Response: 83396  
 Conc: 6.86 ng/ml



#42 AR-1268-2

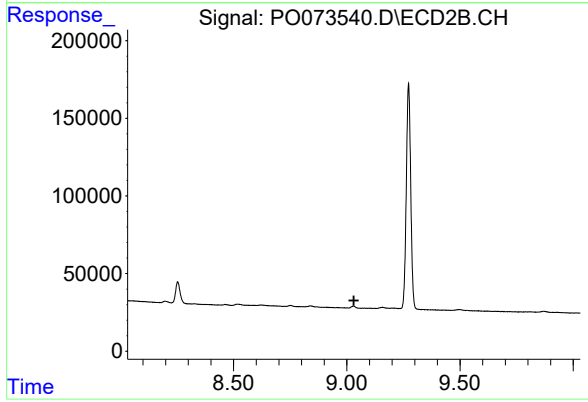
R.T.: 8.253 min  
 Delta R.T.: -0.007 min  
 Response: 189744  
 Conc: 25.98 ng/ml



#45 AR-1268-5

R.T.: 10.631 min  
Delta R.T.: -0.005 min  
Response: 544  
Conc: 0.02 ng/ml

Instrument :  
ECD\_O  
ClientSampled :  
AR1254CCC500



#45 AR-1268-5

R.T.: 0.000 min  
Exp R.T. : 9.031 min  
Response: 0  
Conc: N.D.