

Data Path : Z:\pestpcbsrv\HPCHEM1\ECD\_0\Data\PO112619\  
 Data File : PO064096.D  
 Signal(s) : Signal #1: ECD1A.CH Signal #2: ECD2B.CH  
 Acq On : 26 Nov 2019 9:36  
 Operator : SM/AJ  
 Sample : AR1660ICC1000  
 Misc :  
 ALS Vial : 3 Sample Multiplier: 1

Instrument :  
 ECD\_0  
 ClientSampleId :  
 AR1660ICC1000

Integration File signal 1: autoint1.e  
 Integration File signal 2: autoint2.e  
 Quant Time: Nov 26 10:34:35 2019  
 Quant Method : Z:\pestpcbsrv\HPCHEM1\ECD\_0\methods\PO112619.M  
 Quant Title : GC EXTRACTABLES  
 QLast Update : Tue Nov 26 10:29:30 2019  
 Response via : Initial Calibration  
 Integrator: ChemStation 6890 Scale Mode: Small noise peaks clipped

Volume Inj. : 2 µl  
 Signal #1 Phase : ZB-MR2 Signal #2 Phase: ZB-MR2  
 Signal #1 Info : 30Mx0.32mmx 0.50µ Signal #2 Info : 30M x 0.32mm x 0.25µm

Compound	RT#1	RT#2	Resp#1	Resp#2	ng/ml	ng/ml
-----						
System Monitoring Compounds						
1) SA Tetrachlo...	4.315	3.565	2614843	2042713	97.859	93.917
2) SA Decachlor...	9.940	8.530	3186495	2772640	90.566	92.386
Target Compounds						
3) L1 AR-1016-1	5.476	4.642	1103774	879224	926.998	906.511
4) L1 AR-1016-2	5.498	4.660	1586796	1197615	938.921	917.180
5) L1 AR-1016-3	5.559	4.835	1001854	647550	933.287	905.820
6) L1 AR-1016-4	5.658	4.876	832832	537747	941.632	894.307
7) L1 AR-1016-5	5.950	5.088	832509	699911	911.000	894.347
31) L7 AR-1260-1	7.070	6.115	1585203	1419093	901.902	889.376
32) L7 AR-1260-2	7.327	6.302	1972517	1800453	898.551	892.325
33) L7 AR-1260-3	7.683	6.455	1552880	1678434	889.628	900.725
34) L7 AR-1260-4	7.908	6.925	1886826	1462647	895.077	894.447
35) L7 AR-1260-5	8.219	7.165	3854312	3658529	926.582	912.784

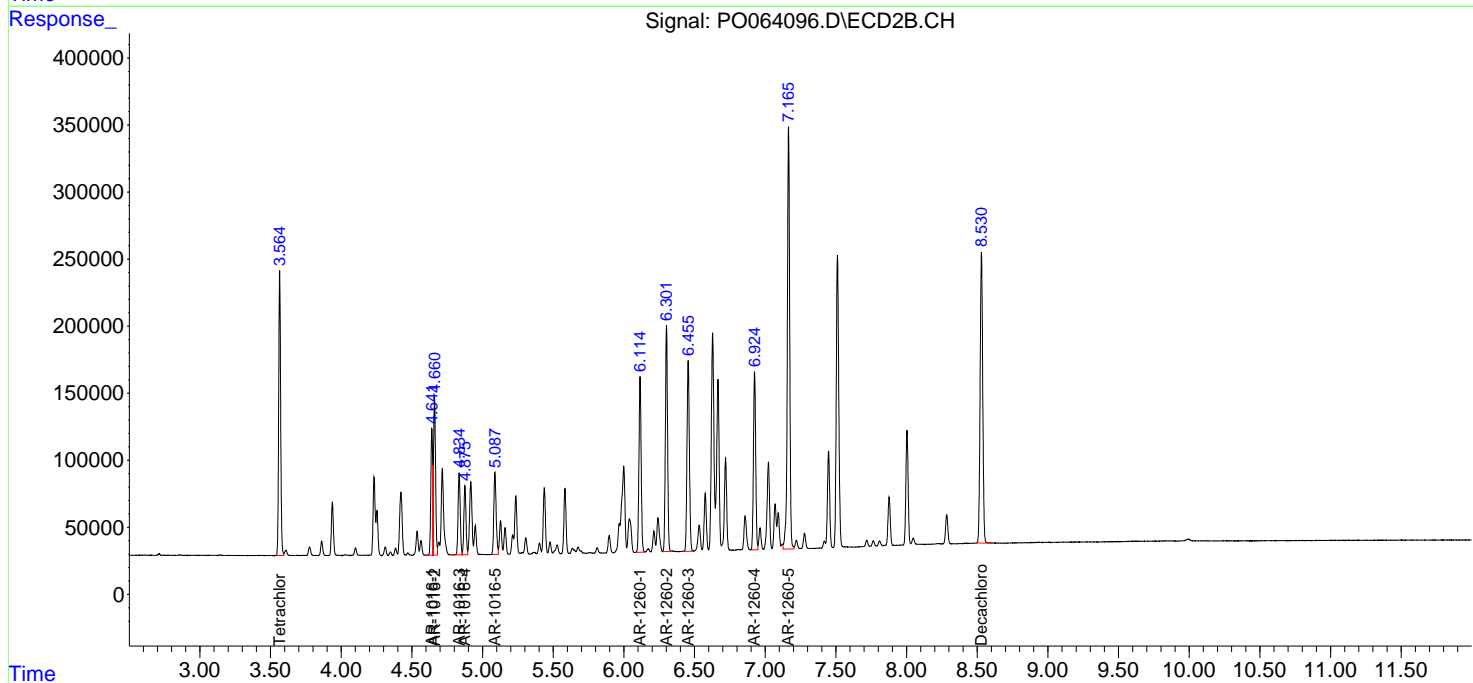
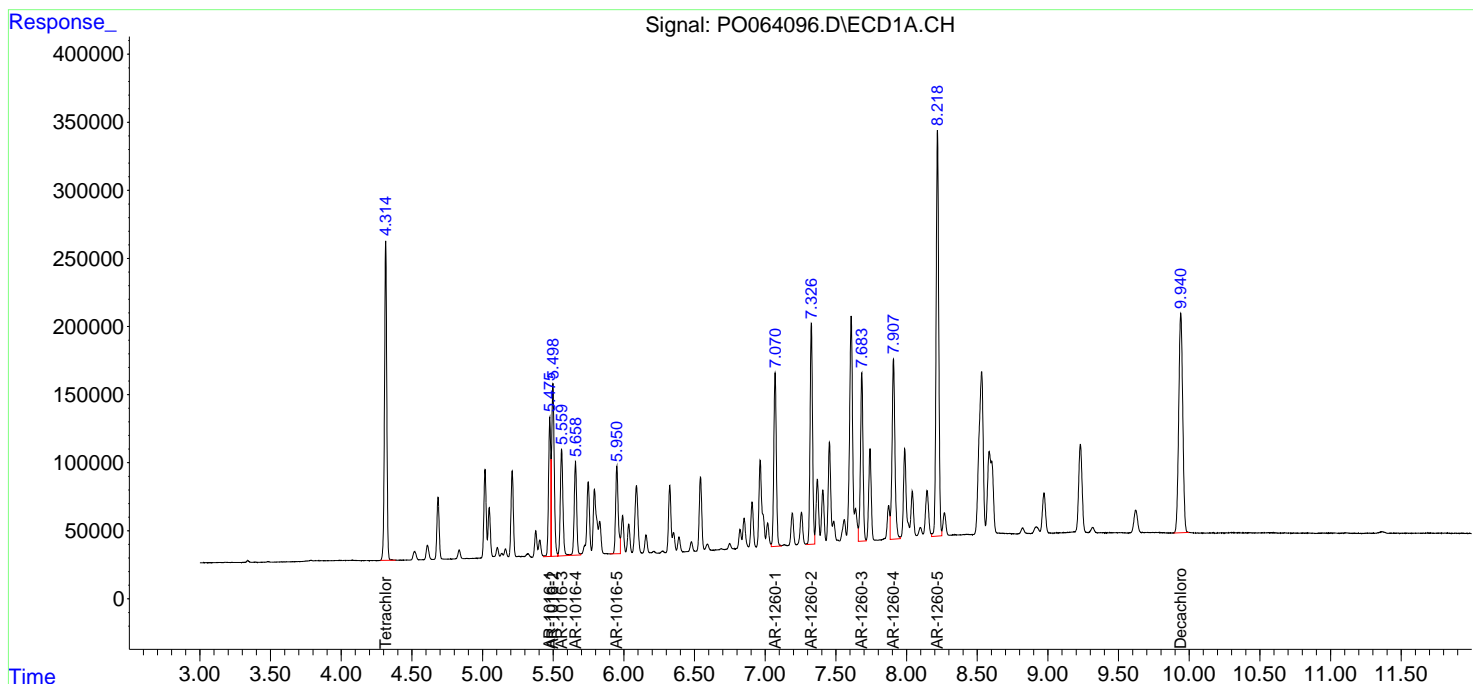
(f)=RT Delta > 1/2 Window (#)=Amounts differ by > 25% (m)=manual int.

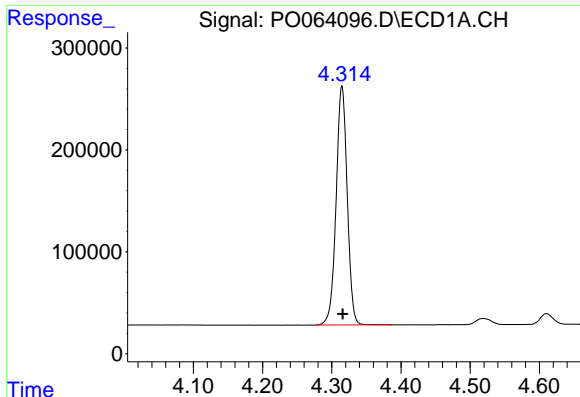
Data Path : Z:\pestpcbsrv\HPCHEM1\ECD\_0\Data\PO112619\  
 Data File : PO064096.D  
 Signal(s) : Signal #1: ECD1A.CH Signal #2: ECD2B.CH  
 Acq On : 26 Nov 2019 9:36  
 Operator : SM/AJ  
 Sample : AR1660ICC1000  
 Misc :  
 ALS Vial : 3 Sample Multiplier: 1

Instrument :  
 ECD\_O  
 ClientSampled :  
 AR1660ICC1000

Integration File signal 1: autoint1.e  
 Integration File signal 2: autoint2.e  
 Quant Time: Nov 26 10:34:35 2019  
 Quant Method : Z:\pestpcbsrv\HPCHEM1\ECD\_0\methods\PO112619.M  
 Quant Title : GC EXTRACTABLES  
 QLast Update : Tue Nov 26 10:29:30 2019  
 Response via : Initial Calibration  
 Integrator: ChemStation 6890 Scale Mode: Small noise peaks clipped

Volume Inj. : 2 µl  
 Signal #1 Phase : ZB-MR1 Signal #2 Phase: ZB-MR2  
 Signal #1 Info : 30Mx0.32mmx 0.50µ Signal #2 Info : 30M x 0.32mm x 0.25µm

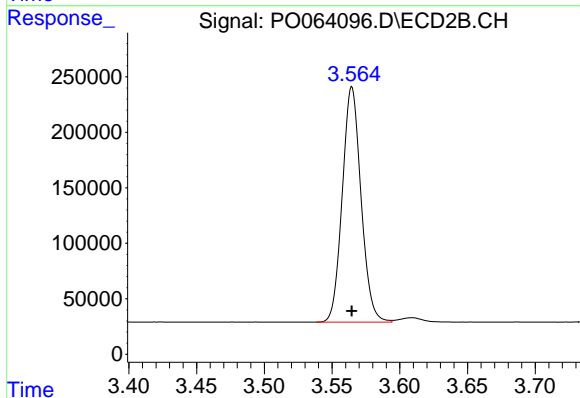




#1 Tetrachloro-m-xylene

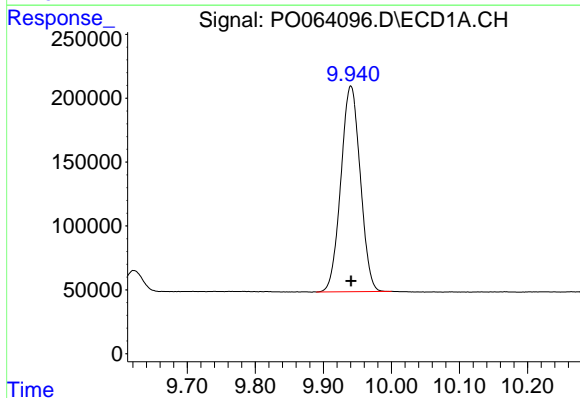
R.T.: 4.315 min  
 Delta R.T.: -0.001 min  
 Response: 2614843  
 Conc: 97.86 ng/ml

Instrument :  
 ECD\_O  
 ClientSampleId :  
 AR1660ICC1000



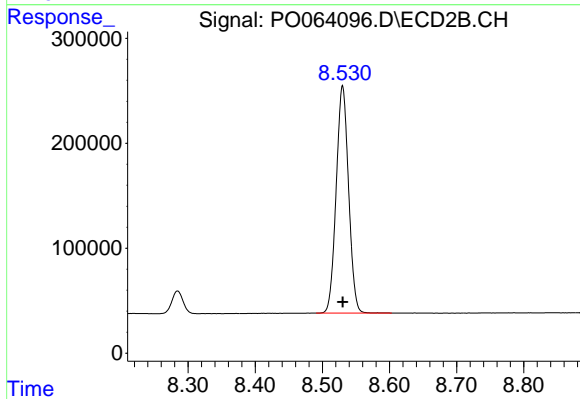
#1 Tetrachloro-m-xylene

R.T.: 3.565 min  
 Delta R.T.: 0.000 min  
 Response: 2042713  
 Conc: 93.92 ng/ml



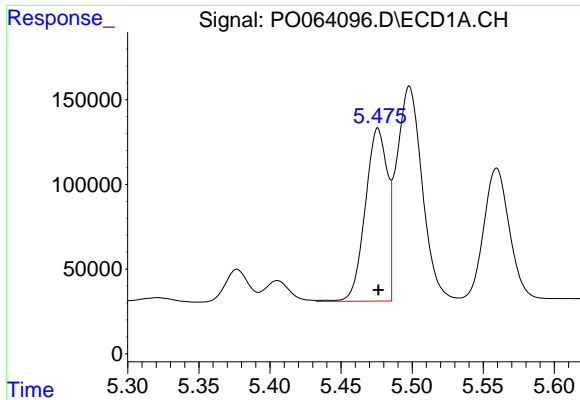
#2 Decachlorobiphenyl

R.T.: 9.940 min  
 Delta R.T.: 0.000 min  
 Response: 3186495  
 Conc: 90.57 ng/ml



#2 Decachlorobiphenyl

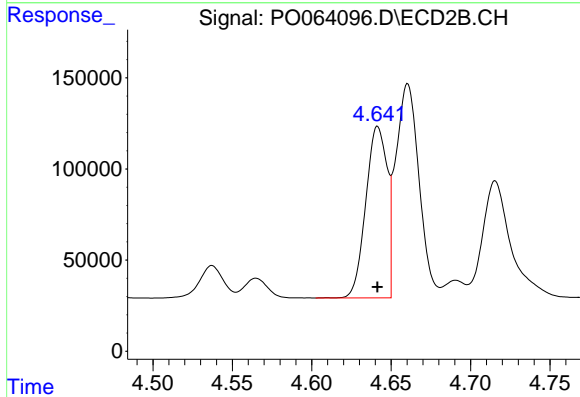
R.T.: 8.530 min  
 Delta R.T.: 0.000 min  
 Response: 2772640  
 Conc: 92.39 ng/ml



#3 AR-1016-1

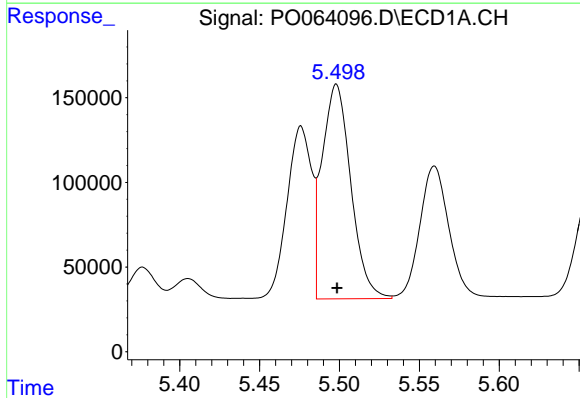
R.T.: 5.476 min  
 Delta R.T.: 0.000 min  
 Response: 1103774  
 Conc: 927.00 ng/ml

Instrument :  
 ECD\_O  
 ClientSampleId :  
 AR1660ICC1000



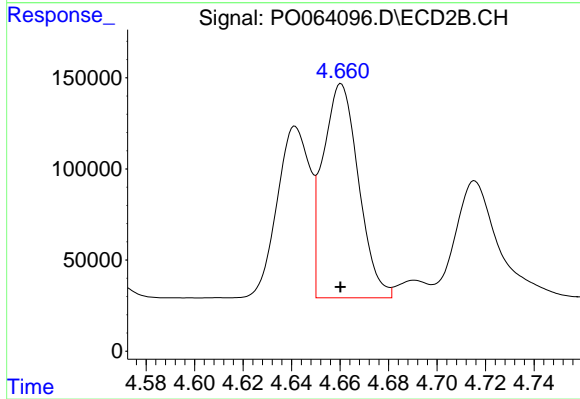
#3 AR-1016-1

R.T.: 4.642 min  
 Delta R.T.: 0.000 min  
 Response: 879224  
 Conc: 906.51 ng/ml



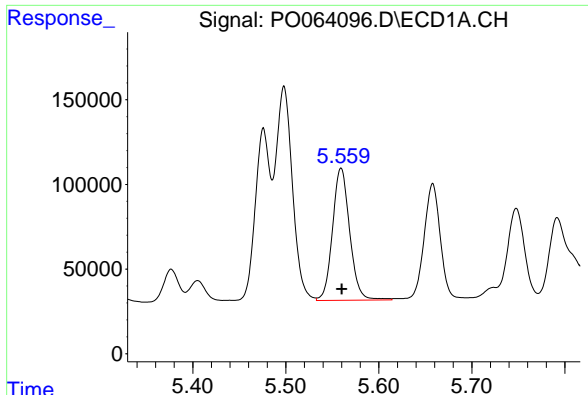
#4 AR-1016-2

R.T.: 5.498 min  
 Delta R.T.: 0.000 min  
 Response: 1586796  
 Conc: 938.92 ng/ml



#4 AR-1016-2

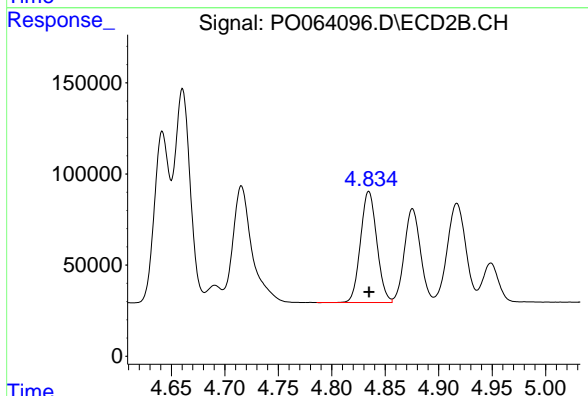
R.T.: 4.660 min  
 Delta R.T.: 0.000 min  
 Response: 1197615  
 Conc: 917.18 ng/ml



#5 AR-1016-3

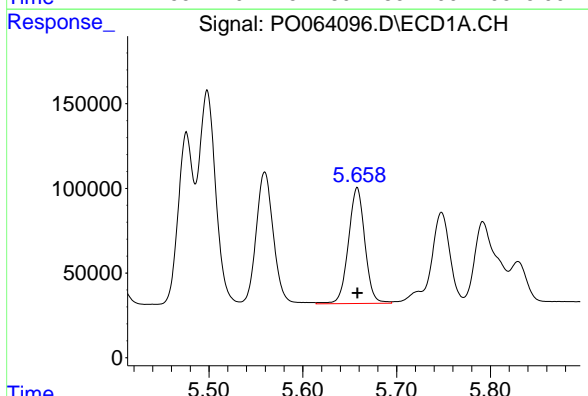
R.T.: 5.559 min  
 Delta R.T.: 0.000 min  
 Response: 1001854  
 Conc: 933.29 ng/ml

Instrument :  
 ECD\_O  
 ClientSampleId :  
 AR1660ICC1000



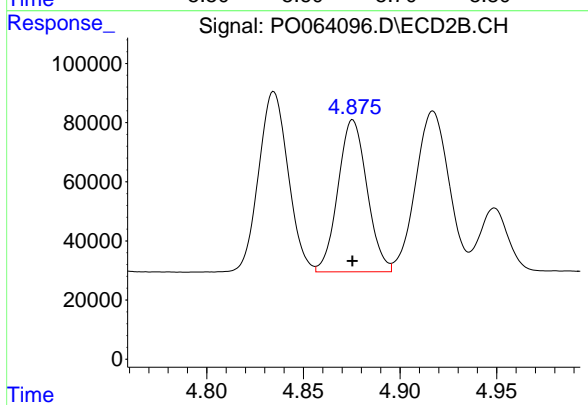
#5 AR-1016-3

R.T.: 4.835 min  
 Delta R.T.: 0.000 min  
 Response: 647550  
 Conc: 905.82 ng/ml



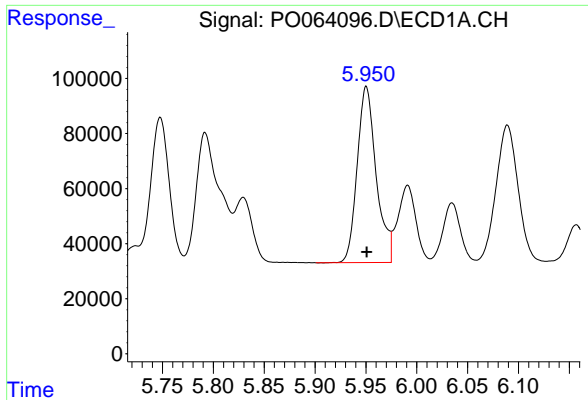
#6 AR-1016-4

R.T.: 5.658 min  
 Delta R.T.: 0.000 min  
 Response: 832832  
 Conc: 941.63 ng/ml



#6 AR-1016-4

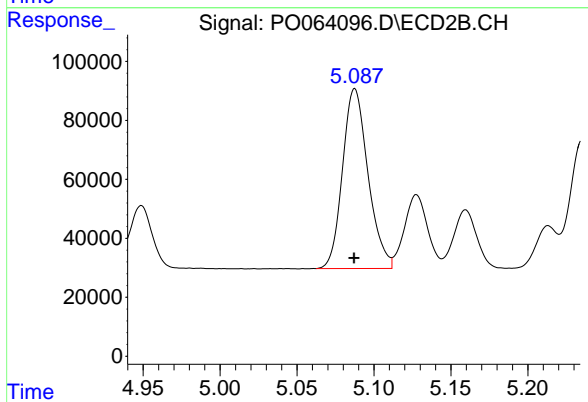
R.T.: 4.876 min  
 Delta R.T.: 0.000 min  
 Response: 537747  
 Conc: 894.31 ng/ml



#7 AR-1016-5

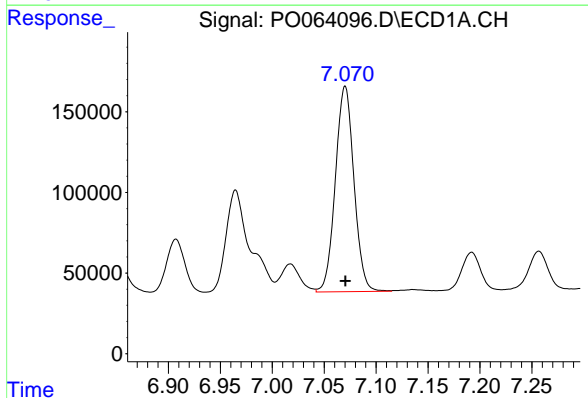
R.T.: 5.950 min  
Delta R.T.: 0.000 min  
Response: 832509  
Conc: 911.00 ng/ml

Instrument :  
ECD\_O  
ClientSampleId :  
AR1660ICC1000



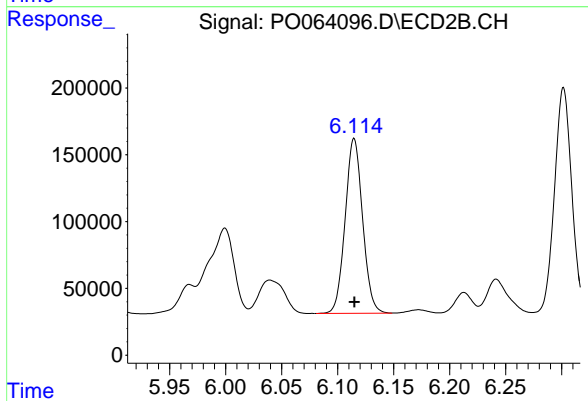
#7 AR-1016-5

R.T.: 5.088 min  
Delta R.T.: 0.000 min  
Response: 699911  
Conc: 894.35 ng/ml



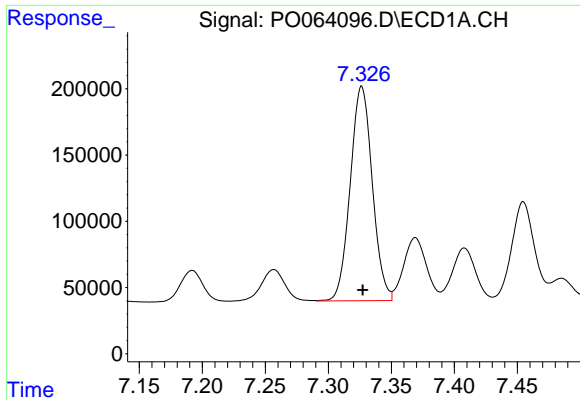
#31 AR-1260-1

R.T.: 7.070 min  
Delta R.T.: 0.000 min  
Response: 1585203  
Conc: 901.90 ng/ml



#31 AR-1260-1

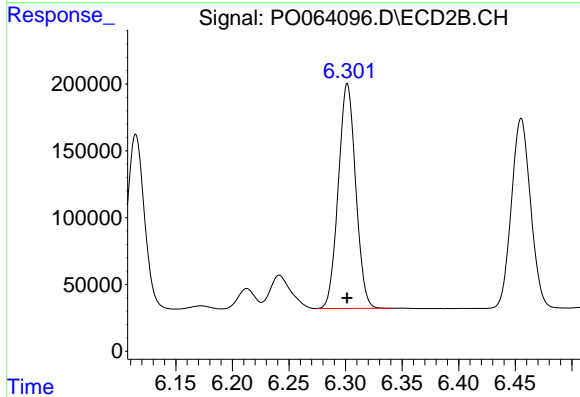
R.T.: 6.115 min  
Delta R.T.: 0.000 min  
Response: 1419093  
Conc: 889.38 ng/ml



#32 AR-1260-2

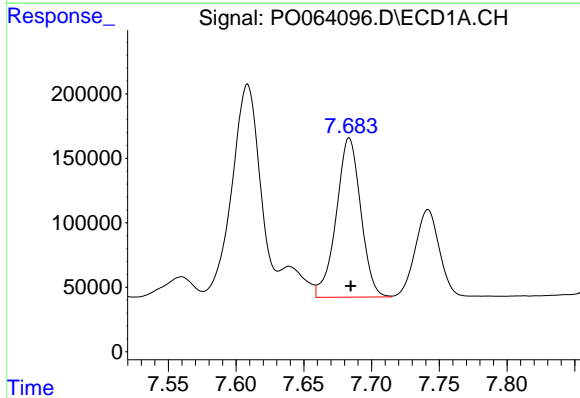
R.T.: 7.327 min  
Delta R.T.: 0.000 min  
Response: 1972517  
Conc: 898.55 ng/ml

Instrument :  
ECD\_O  
ClientSampleId :  
AR1660ICC1000



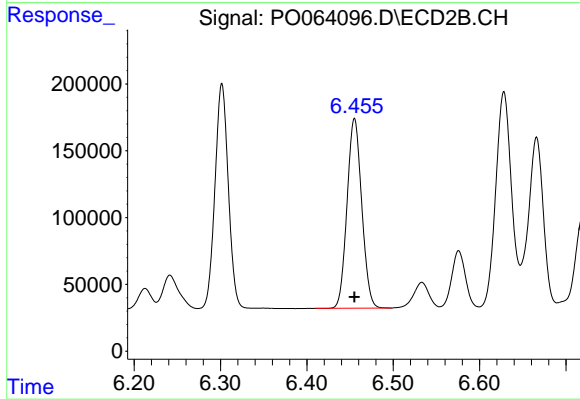
#32 AR-1260-2

R.T.: 6.302 min  
Delta R.T.: 0.000 min  
Response: 1800453  
Conc: 892.33 ng/ml



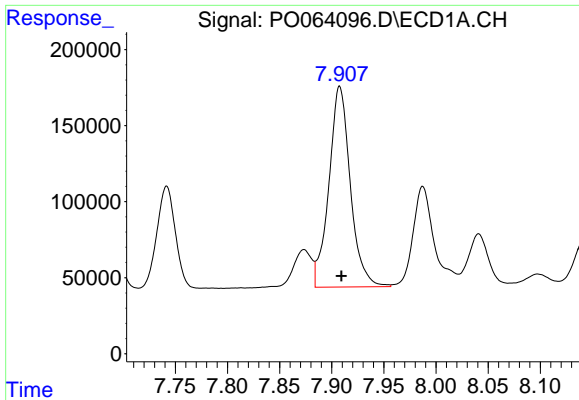
#33 AR-1260-3

R.T.: 7.683 min  
Delta R.T.: -0.001 min  
Response: 1552880  
Conc: 889.63 ng/ml



#33 AR-1260-3

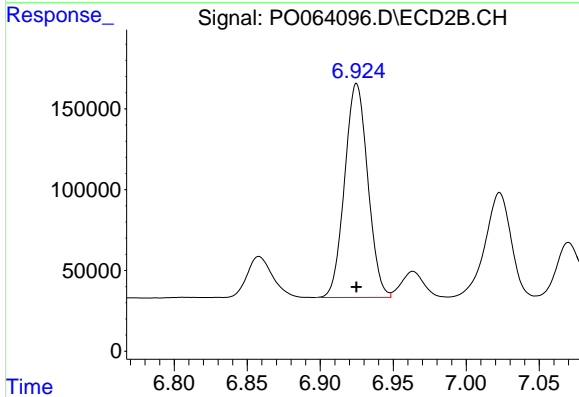
R.T.: 6.455 min  
Delta R.T.: 0.000 min  
Response: 1678434  
Conc: 900.72 ng/ml



#34 AR-1260-4

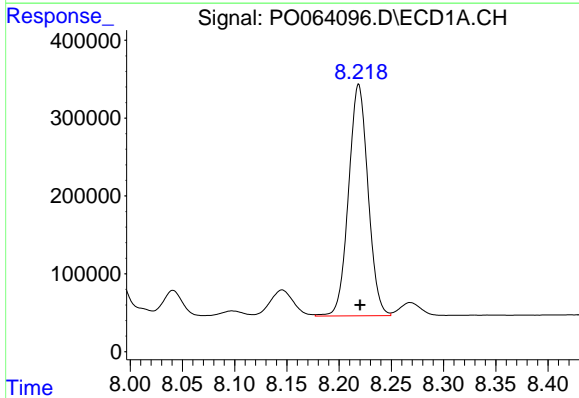
R.T.: 7.908 min  
 Delta R.T.: -0.002 min  
 Response: 1886826  
 Conc: 895.08 ng/ml

Instrument :  
 ECD\_O  
 ClientSampled :  
 AR1660ICC1000



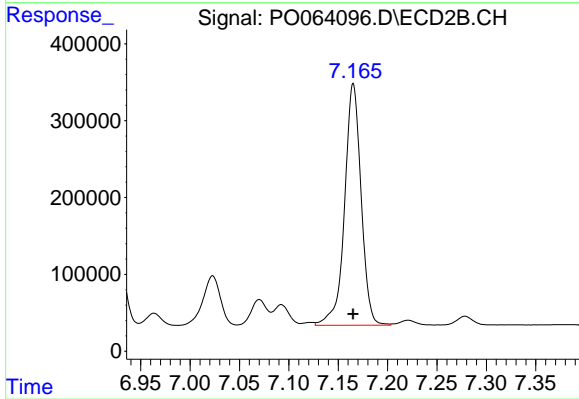
#34 AR-1260-4

R.T.: 6.925 min  
 Delta R.T.: 0.000 min  
 Response: 1462647  
 Conc: 894.45 ng/ml



#35 AR-1260-5

R.T.: 8.219 min  
 Delta R.T.: -0.001 min  
 Response: 3854312  
 Conc: 926.58 ng/ml



#35 AR-1260-5

R.T.: 7.165 min  
 Delta R.T.: 0.000 min  
 Response: 3658529  
 Conc: 912.78 ng/ml