

Data Path : Z:\pestpcbsrv\HPCHEM1\ECD\_0\Data\PO112619\  
 Data File : PO064179.D  
 Signal(s) : Signal #1: ECD1A.CH Signal #2: ECD2B.CH  
 Acq On : 27 Nov 2019 12:43  
 Operator : SM/AJ  
 Sample : K6014-09RE  
 Misc :  
 ALS Vial : 4 Sample Multiplier: 1

Instrument :  
 ECD\_0  
 ClientSampleId :  
 CS-05RE

Integration File signal 1: autoint1.e  
 Integration File signal 2: autoint2.e  
 Quant Time: Nov 27 14:09:12 2019  
 Quant Method : Z:\pestpcbsrv\HPCHEM1\ECD\_0\methods\PO112619.M  
 Quant Title : GC EXTRACTABLES  
 QLast Update : Wed Nov 27 03:34:17 2019  
 Response via : Initial Calibration  
 Integrator: ChemStation 6890 Scale Mode: Small noise peaks clipped

Volume Inj. : 2 µl  
 Signal #1 Phase : ZB-MR1 Signal #2 Phase: ZB-MR2  
 Signal #1 Info : 30Mx0.32mmx 0.50µ Signal #2 Info : 30M x 0.32mm x 0.25µm

| Compound                    | RT#1  | RT#2  | Resp#1  | Resp#2 | ng/ml  | ng/ml  |
|-----------------------------|-------|-------|---------|--------|--------|--------|
| -----                       |       |       |         |        |        |        |
| System Monitoring Compounds |       |       |         |        |        |        |
| 1) SA Tetrachlo...          | 4.312 | 3.561 | 971467  | 785316 | 36.606 | 36.850 |
| 2) SA Decachlor...          | 9.934 | 8.524 | 1062652 | 929170 | 30.399 | 31.425 |

Target Compounds

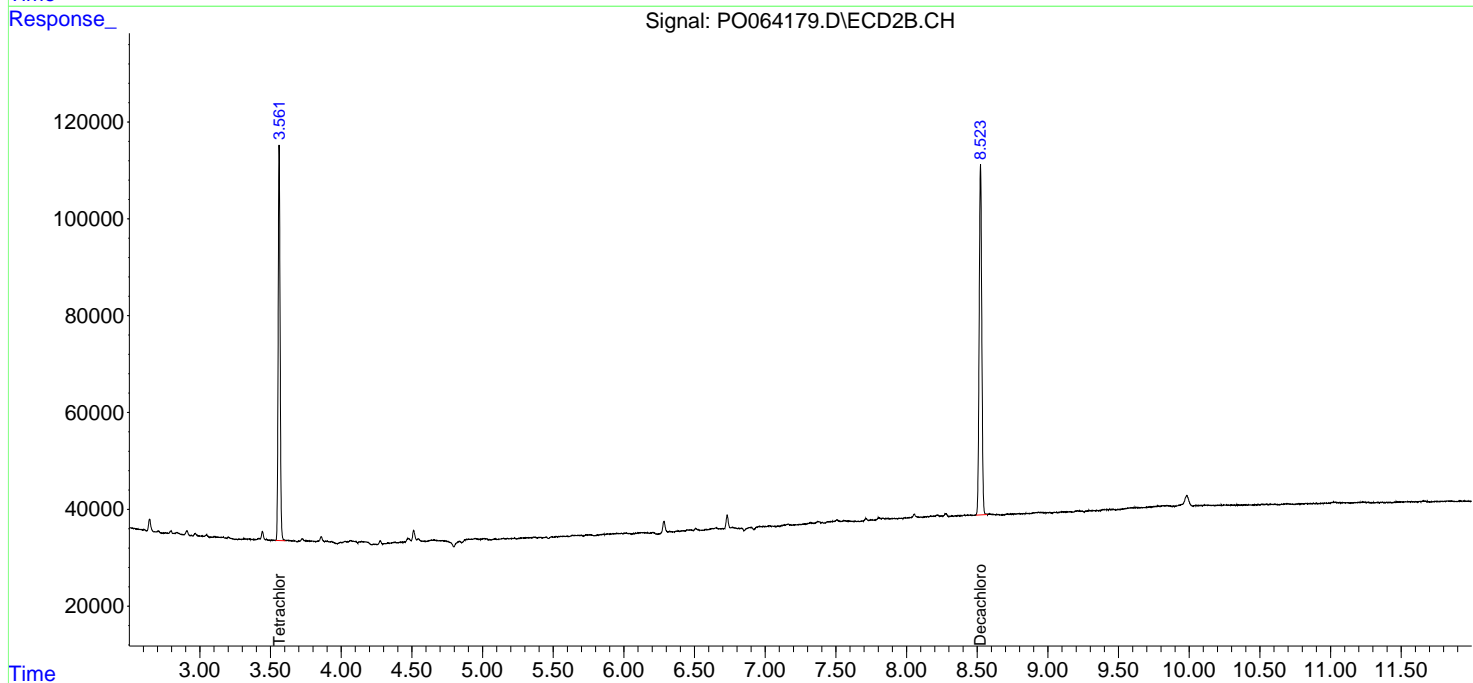
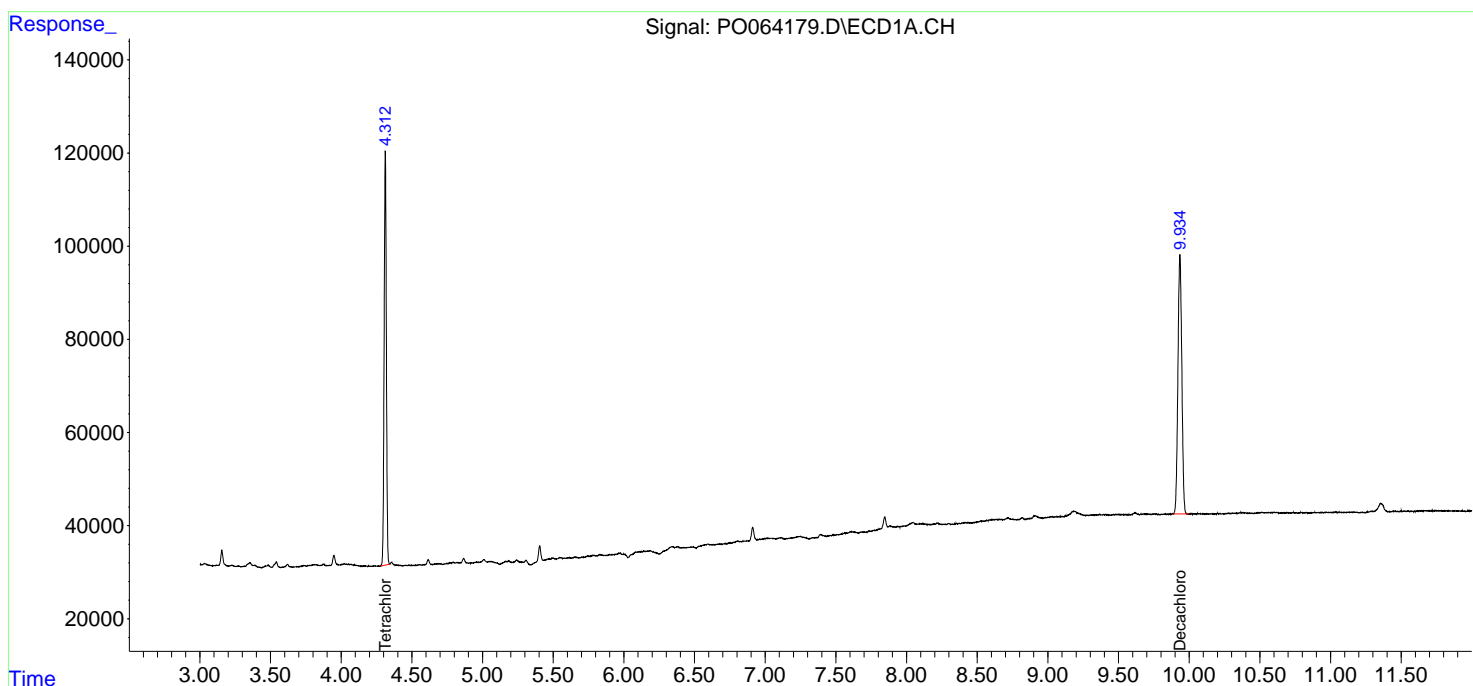
(f)=RT Delta > 1/2 Window (#)=Amounts differ by > 25% (m)=manual int.

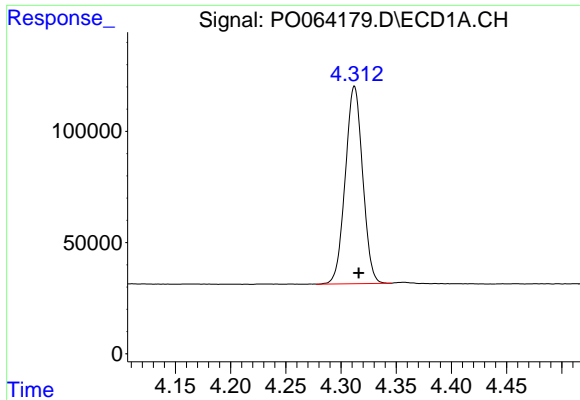
Data Path : Z:\pestpcbsrv\HPCHEM1\ECD\_0\Data\PO112619\  
 Data File : PO064179.D  
 Signal(s) : Signal #1: ECD1A.CH Signal #2: ECD2B.CH  
 Acq On : 27 Nov 2019 12:43  
 Operator : SM/AJ  
 Sample : K6014-09RE  
 Misc :  
 ALS Vial : 4 Sample Multiplier: 1

Instrument :  
 ECD\_O  
 ClientSampleId :  
 CS-05RE

Integration File signal 1: autoint1.e  
 Integration File signal 2: autoint2.e  
 Quant Time: Nov 27 14:09:12 2019  
 Quant Method : Z:\pestpcbsrv\HPCHEM1\ECD\_0\methods\PO112619.M  
 Quant Title : GC EXTRACTABLES  
 QLast Update : Wed Nov 27 03:34:17 2019  
 Response via : Initial Calibration  
 Integrator: ChemStation 6890 Scale Mode: Small noise peaks clipped

Volume Inj. : 2 µl  
 Signal #1 Phase : ZB-MR1 Signal #2 Phase: ZB-MR2  
 Signal #1 Info : 30Mx0.32mmx 0.50µ Signal #2 Info : 30M x 0.32mm x 0.25µm

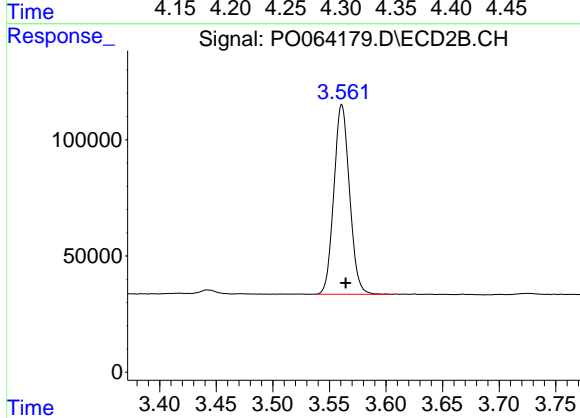




#1 Tetrachloro-m-xylene

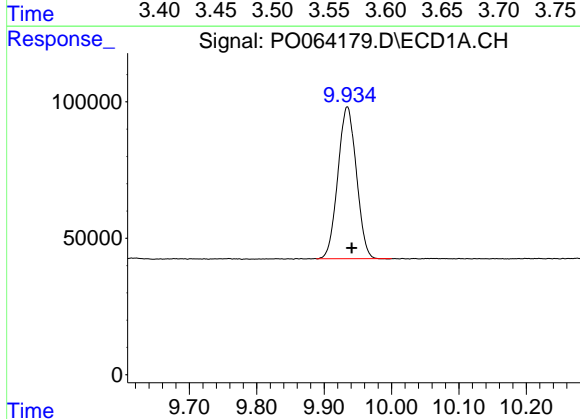
R.T.: 4.312 min  
 Delta R.T.: -0.004 min  
 Response: 971467  
 Conc: 36.61 ng/ml

Instrument :  
 ECD\_O  
 ClientSampled :  
 CS-05RE



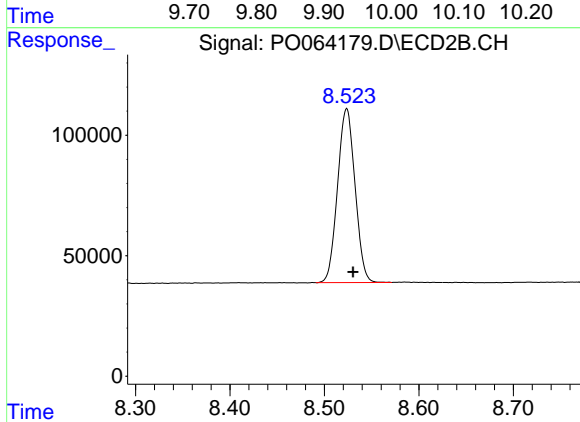
#1 Tetrachloro-m-xylene

R.T.: 3.561 min  
 Delta R.T.: -0.004 min  
 Response: 785316  
 Conc: 36.85 ng/ml



#2 Decachlorobiphenyl

R.T.: 9.934 min  
 Delta R.T.: -0.006 min  
 Response: 1062652  
 Conc: 30.40 ng/ml



#2 Decachlorobiphenyl

R.T.: 8.524 min  
 Delta R.T.: -0.007 min  
 Response: 929170  
 Conc: 31.43 ng/ml