

Data Path : Z:\pestpcbsrv\HPCHEM1\ECD_O\Data\PO112718\
 Data File : P0051823.D
 Signal(s) : Signal #1: ECD1A.CH Signal #2: ECD2B.CH
 Acq On : 27 Nov 2018 10:06
 Operator : SM/SJ
 Sample : I.BLK
 Misc :
 ALS Vial : 2 Sample Multiplier: 1

Instrument :
 ECD_O
 ClientSampleID :
 I.BLK

Integration File signal 1: autoint1.e
 Integration File signal 2: autoint2.e
 Quant Time: Nov 29 10:20:17 2018
 Quant Method : Z:\pestpcbsrv\HPCHEM1\ECD_O\methods\PO112618.M
 Quant Title : GC EXTRACTABLES
 QLast Update : Tue Nov 27 01:06:37 2018
 Response via : Initial Calibration
 Integrator: ChemStation 6890 Scale Mode: Small noise peaks clipped

Volume Inj. : 2 µl
 Signal #1 Phase : ZB-MR1 Signal #2 Phase: ZB-MR2
 Signal #1 Info : 30Mx0.32mmx 0.50µ Signal #2 Info : 30M x 0.32mm x 0.25µm

Compound	RT#1	RT#2	Resp#1	Resp#2	ng/ml	ng/ml
----------	------	------	--------	--------	-------	-------

 System Monitoring Compounds

1) SA Tetrachlo...	4.306	3.311	14921122	4782747	22.873	20.257
2) SA Decachlor...	9.917	8.029	9551519	4275681	22.906	21.611

Target Compounds

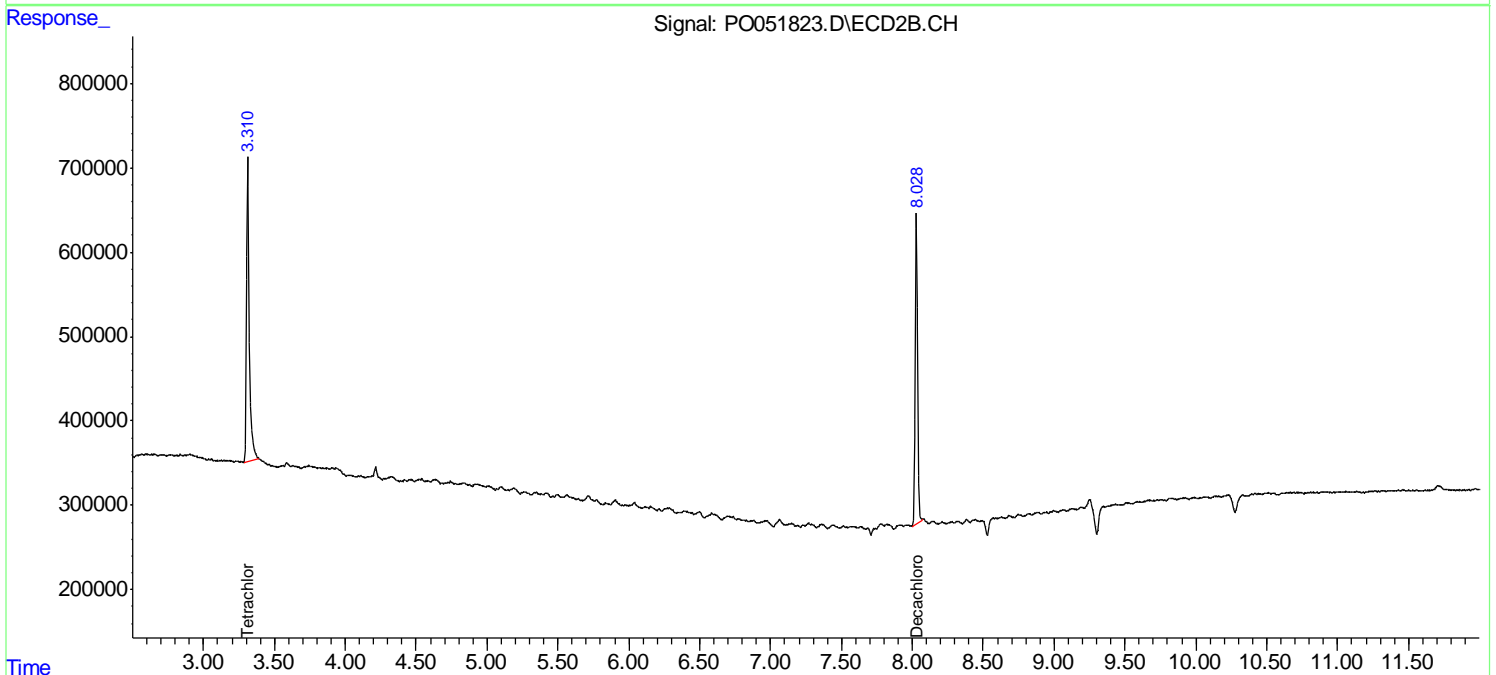
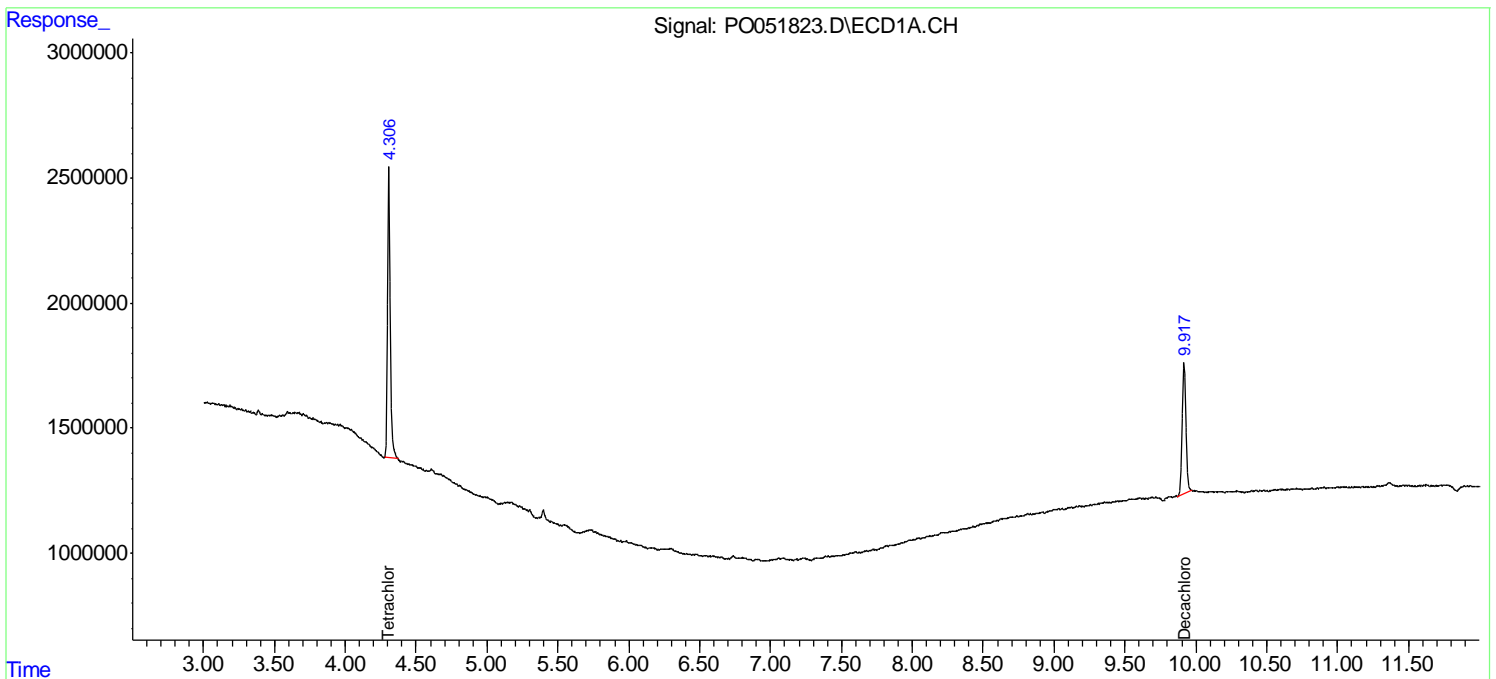
(f)=RT Delta > 1/2 Window (#)=Amounts differ by > 25% (m)=manual int.

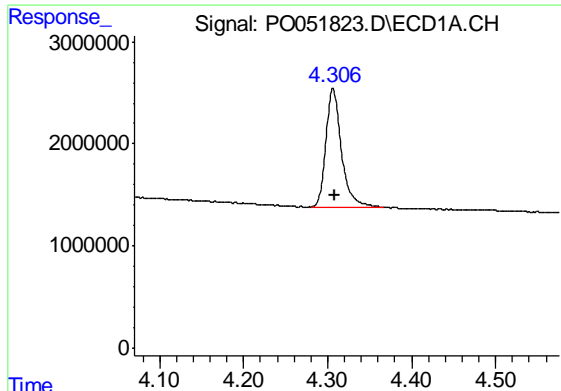
Data Path : Z:\pestpcbsrv\HPCHEM1\ECD_O\Data\PO112718\
 Data File : PO051823.D
 Signal(s) : Signal #1: ECD1A.CH Signal #2: ECD2B.CH
 Acq On : 27 Nov 2018 10:06
 Operator : SM/SJ
 Sample : I.BLK
 Misc :
 ALS Vial : 2 Sample Multiplier: 1

Instrument :
 ECD_O
 ClientSampleId :
 I.BLK

Integration File signal 1: autoint1.e
 Integration File signal 2: autoint2.e
 Quant Time: Nov 29 10:20:17 2018
 Quant Method : Z:\pestpcbsrv\HPCHEM1\ECD_O\methods\PO112618.M
 Quant Title : GC EXTRACTABLES
 QLast Update : Tue Nov 27 01:06:37 2018
 Response via : Initial Calibration
 Integrator: ChemStation 6890 Scale Mode: Small noise peaks clipped

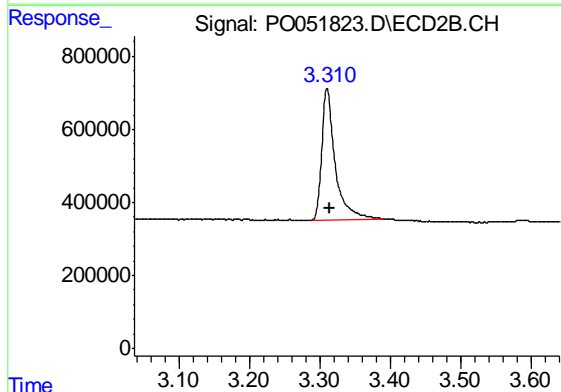
Volume Inj. : 2 µl
 Signal #1 Phase : ZB-MR1 Signal #2 Phase: ZB-MR2
 Signal #1 Info : 30Mx0.32mmx 0.50µ Signal #2 Info : 30M x 0.32mm x 0.25µm



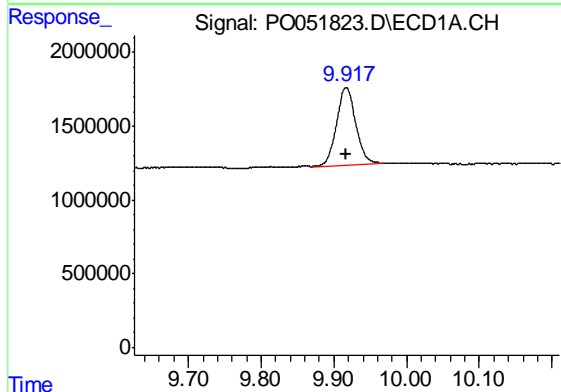


#1 Tetrachloro-m-xylene
 R.T.: 4.306 min
 Delta R.T.: -0.002 min
 Response: 14921122
 Conc: 22.87 ng/ml

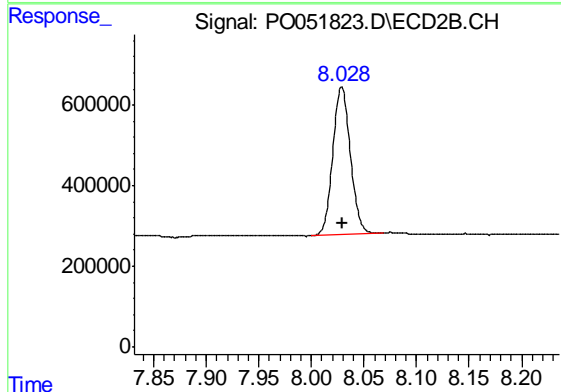
Instrument :
 ECD_O
 ClientSampleId :
 I.BLK



#1 Tetrachloro-m-xylene
 R.T.: 3.311 min
 Delta R.T.: -0.003 min
 Response: 4782747
 Conc: 20.26 ng/ml



#2 Decachlorobiphenyl
 R.T.: 9.917 min
 Delta R.T.: 0.000 min
 Response: 9551519
 Conc: 22.91 ng/ml



#2 Decachlorobiphenyl
 R.T.: 8.029 min
 Delta R.T.: -0.001 min
 Response: 4275681
 Conc: 21.61 ng/ml