

Data Path : Z:\pestpcbsrv\HPCHEM1\ECD\_O\Data\PO112718\  
 Data File : P0051845.D  
 Signal(s) : Signal #1: ECD1A.CH Signal #2: ECD2B.CH  
 Acq On : 27 Nov 2018 20:22  
 Operator : SM/SJ  
 Sample : J6023-16  
 Misc :  
 ALS Vial : 10 Sample Multiplier: 1

Instrument :  
 ECD\_O  
 ClientSampleId :  
 111918-CHDE-E-U-S

Integration File signal 1: autoint1.e  
 Integration File signal 2: autoint2.e  
 Quant Time: Nov 29 10:33:01 2018  
 Quant Method : Z:\pestpcbsrv\HPCHEM1\ECD\_O\methods\PO112618.M  
 Quant Title : GC EXTRACTABLES  
 QLast Update : Tue Nov 27 01:06:37 2018  
 Response via : Initial Calibration  
 Integrator: ChemStation 6890 Scale Mode: Small noise peaks clipped

Volume Inj. : 2 µl  
 Signal #1 Phase : ZB-MR1 Signal #2 Phase: ZB-MR2  
 Signal #1 Info : 30Mx0.32mmx 0.50µ Signal #2 Info : 30M x 0.32mm x 0.25µm

Compound	RT#1	RT#2	Resp#1	Resp#2	ng/ml	ng/ml
----------	------	------	--------	--------	-------	-------

-----  
 System Monitoring Compounds

1) SA Tetrachlo...	4.302	3.309	18074822	4888998	27.707	20.707 #
2) SA Decachlor...	9.913	8.026	10450989	4926401	25.063	24.900

Target Compounds  
 -----

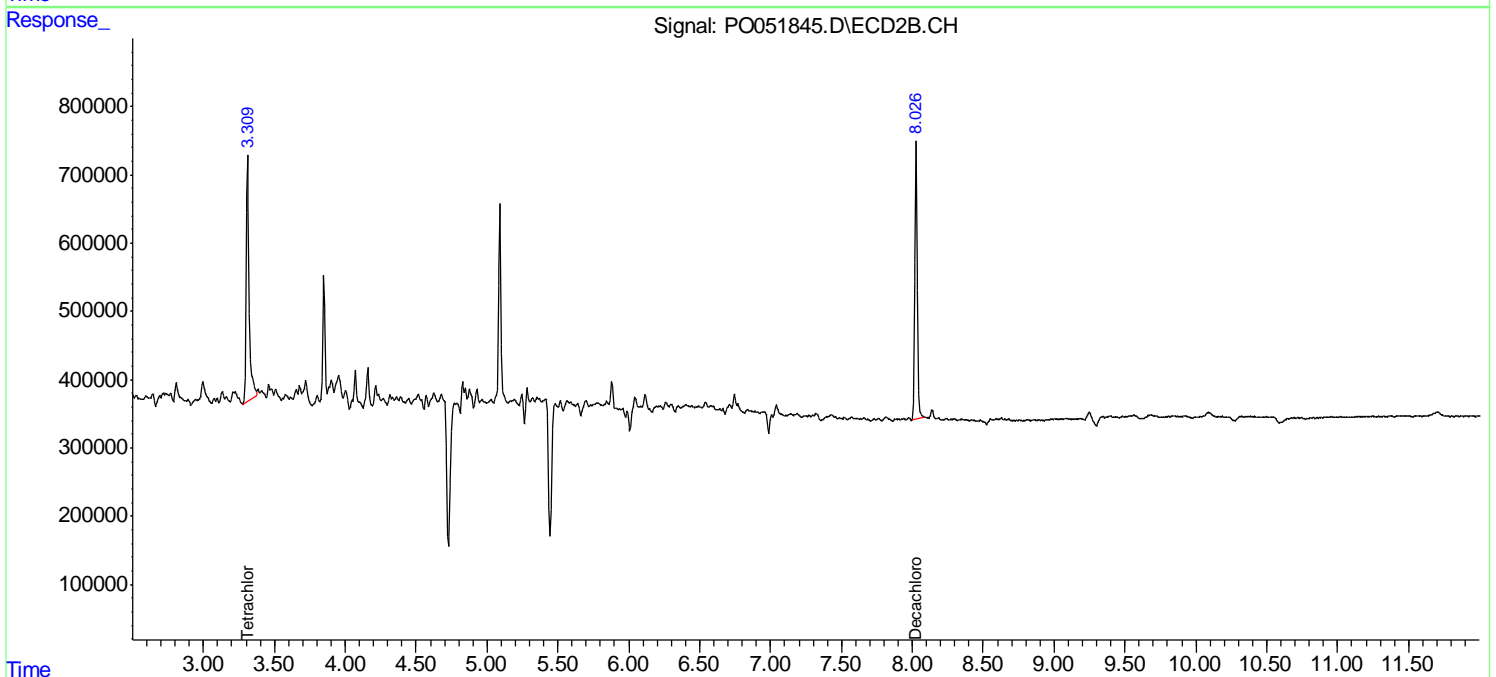
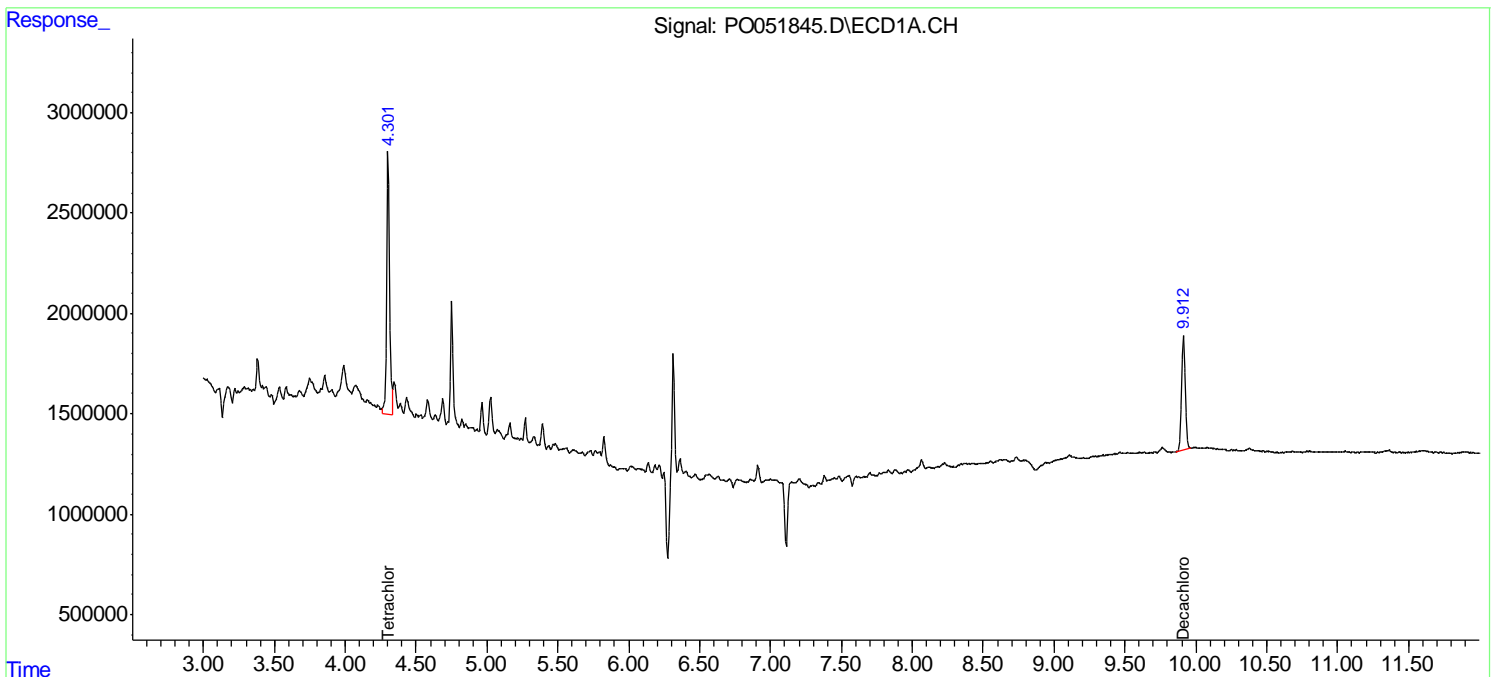
(f)=RT Delta > 1/2 Window (#)=Amounts differ by > 25% (m)=manual int.

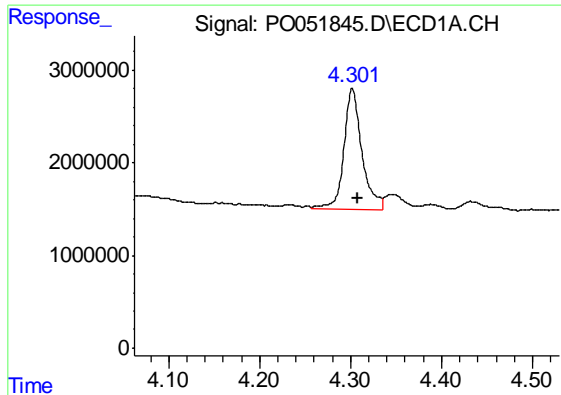
Data Path : Z:\pestpcbsrv\HPCHEM1\ECD\_O\Data\PO112718\  
 Data File : PO051845.D  
 Signal(s) : Signal #1: ECD1A.CH Signal #2: ECD2B.CH  
 Acq On : 27 Nov 2018 20:22  
 Operator : SM/SJ  
 Sample : J6023-16  
 Misc :  
 ALS Vial : 10 Sample Multiplier: 1

Instrument :  
 ECD\_O  
 ClientSampleId :  
 111918-CHDE-E-U-S

Integration File signal 1: autoint1.e  
 Integration File signal 2: autoint2.e  
 Quant Time: Nov 29 10:33:01 2018  
 Quant Method : Z:\pestpcbsrv\HPCHEM1\ECD\_O\methods\PO112618.M  
 Quant Title : GC EXTRACTABLES  
 QLast Update : Tue Nov 27 01:06:37 2018  
 Response via : Initial Calibration  
 Integrator: ChemStation 6890 Scale Mode: Small noise peaks clipped

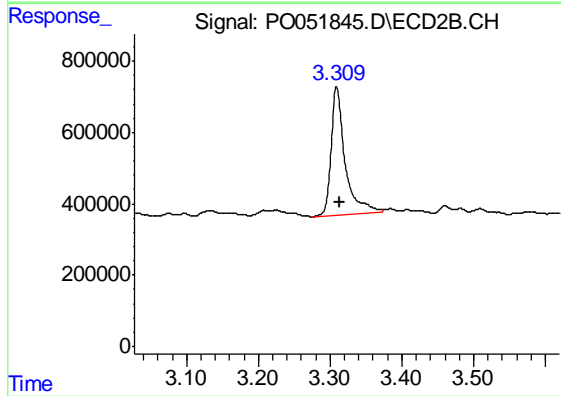
Volume Inj. : 2 µl  
 Signal #1 Phase : ZB-MR1 Signal #2 Phase: ZB-MR2  
 Signal #1 Info : 30Mx0.32mmx 0.50µ Signal #2 Info : 30M x 0.32mm x 0.25µm



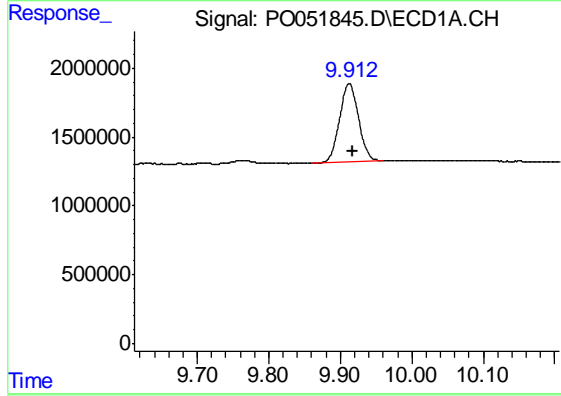


#1 Tetrachloro-m-xylene  
 R.T.: 4.302 min  
 Delta R.T.: -0.006 min  
 Response: 18074822  
 Conc: 27.71 ng/ml

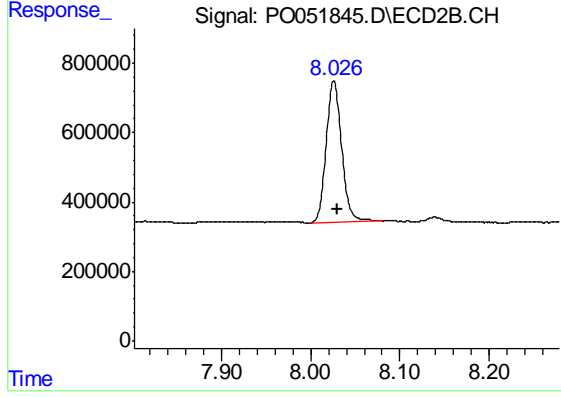
Instrument :  
 ECD\_O  
 ClientSampleId :  
 111918-CHDE-E-U-S



#1 Tetrachloro-m-xylene  
 R.T.: 3.309 min  
 Delta R.T.: -0.005 min  
 Response: 4888998  
 Conc: 20.71 ng/ml



#2 Decachlorobiphenyl  
 R.T.: 9.913 min  
 Delta R.T.: -0.005 min  
 Response: 10450989  
 Conc: 25.06 ng/ml



#2 Decachlorobiphenyl  
 R.T.: 8.026 min  
 Delta R.T.: -0.004 min  
 Response: 4926401  
 Conc: 24.90 ng/ml