

Data Path : Z:\pestpcbsrv\HPCHEM1\ECD_0\Data\PO113018\
 Data File : PO052016.D
 Signal(s) : Signal #1: ECD1A.CH Signal #2: ECD2B.CH
 Acq On : 30 Nov 2018 8:42
 Operator : SM/SJ
 Sample : PB115054BL
 Misc :
 ALS Vial : 7 Sample Multiplier: 1

Instrument :
 ECD_0
 ClientSampleId :

Integration File signal 1: autoint1.e
 Integration File signal 2: autoint2.e
 Quant Time: Nov 30 08:58:39 2018
 Quant Method : Z:\pestpcbsrv\HPCHEM1\ECD_0\methods\PO112918.M
 Quant Title : GC EXTRACTABLES
 QLast Update : Fri Nov 30 03:43:16 2018
 Response via : Initial Calibration
 Integrator: ChemStation 6890 Scale Mode: Small noise peaks clipped

Volume Inj. : 2 µl
 Signal #1 Phase : ZB-MR1 Signal #2 Phase: ZB-MR2
 Signal #1 Info : 30Mx0.32mmx 0.50µ Signal #2 Info : 30M x 0.32mm x 0.25µm

Compound	RT#1	RT#2	Resp#1	Resp#2	ng/ml	ng/ml

System Monitoring Compounds						
1) SA Tetrachlo...	4.291	3.284	56732352	15852029	22.986	17.708
2) SA Decachlor...	9.900	8.014	33523717	14397183	20.595	21.008
Target Compounds						
3) L1 AR-1016-1	5.387	0.000	1409903	0	25.288	N.D. #
9) L2 AR-1221-2	4.597	3.565	613819	172974	42.989	32.137 #
10) L2 AR-1221-3	4.597	0.000	613819	0	13.588	N.D. #
11) L3 AR-1232-1	4.597	0.000	613819	0	16.601	N.D. #
16) L4 AR-1242-1	5.387	0.000	1409903	0	33.367	N.D. #
21) L5 AR-1248-1	5.387	0.000	1409903	0	45.438	N.D. #
28) L6 AR-1254-3	6.906	0.000	1679611	0	18.502	N.D. #
32) L7 AR-1260-2	0.000	5.871	0	787525	N.D.	18.112 #
34) L7 AR-1260-4	7.821	6.446	1294886	211961	18.499	7.660 #

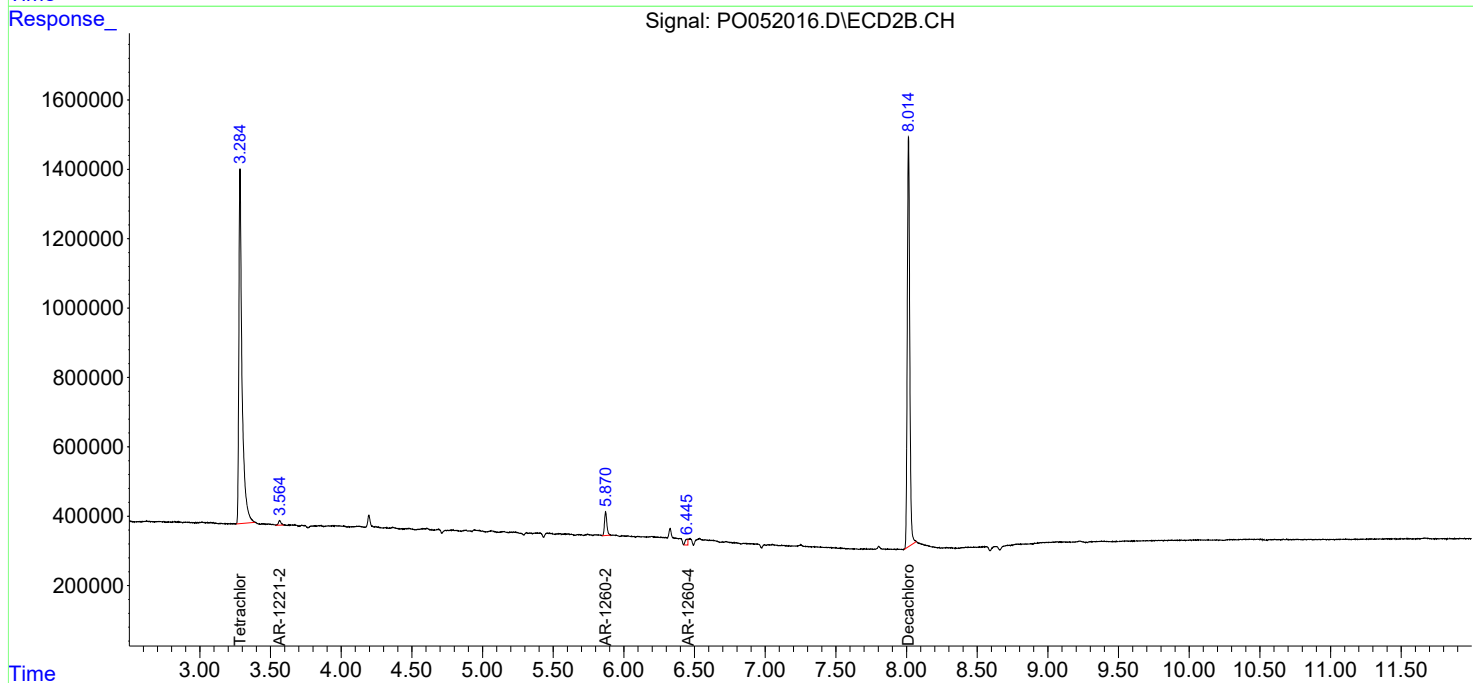
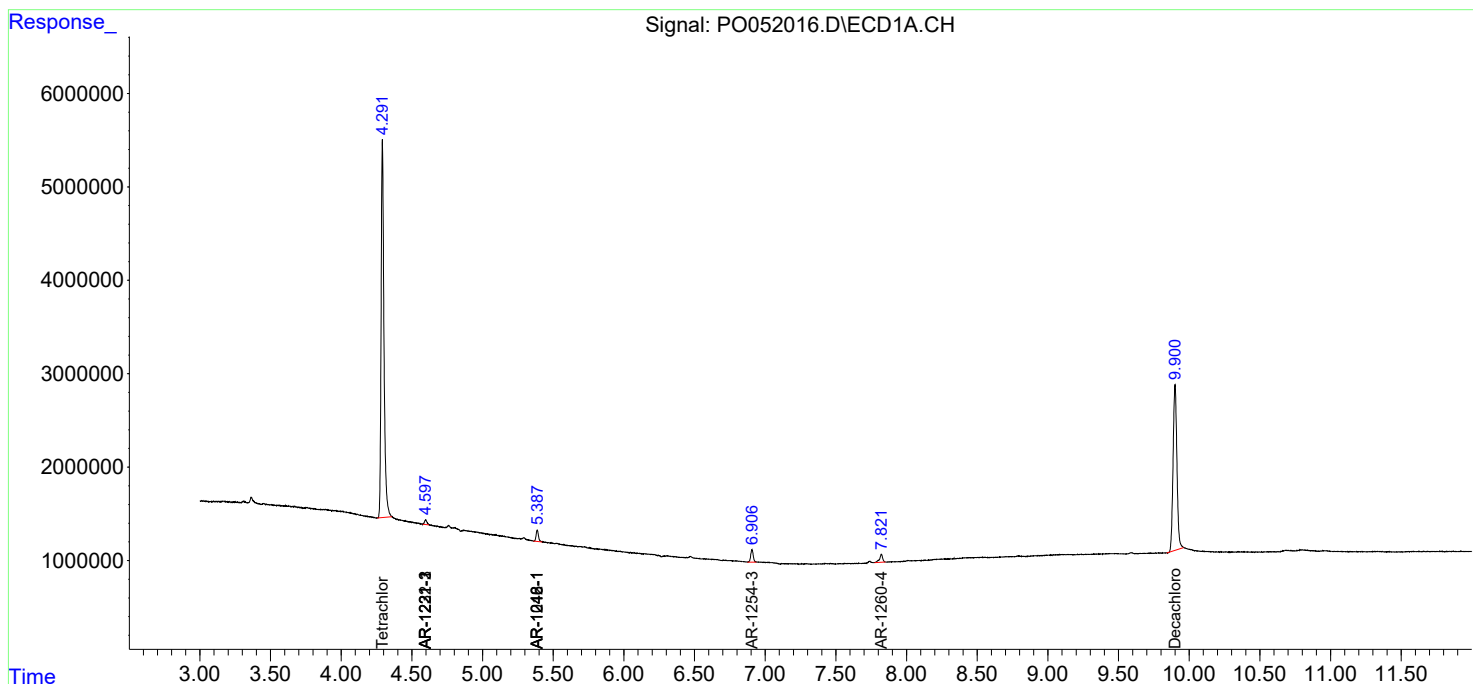
(f)=RT Delta > 1/2 Window (#)=Amounts differ by > 25% (m)=manual int.

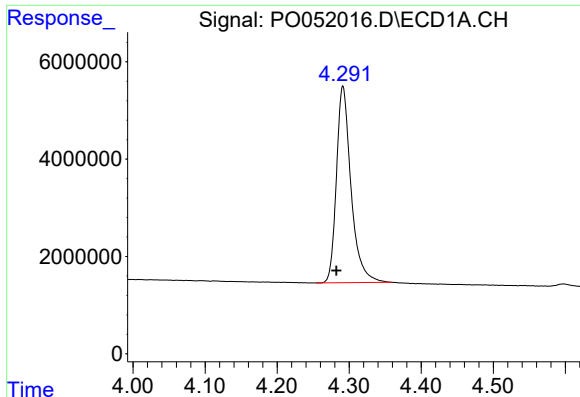
Data Path : Z:\pestpcbsrv\HPCHEM1\ECD_0\Data\PO113018\
 Data File : PO052016.D
 Signal(s) : Signal #1: ECD1A.CH Signal #2: ECD2B.CH
 Acq On : 30 Nov 2018 8:42
 Operator : SM/SJ
 Sample : PB115054BL
 Misc :
 ALS Vial : 7 Sample Multiplier: 1

Instrument :
 ECD_O
 ClientSampled :

Integration File signal 1: autoint1.e
 Integration File signal 2: autoint2.e
 Quant Time: Nov 30 08:58:39 2018
 Quant Method : Z:\pestpcbsrv\HPCHEM1\ECD_0\methods\PO112918.M
 Quant Title : GC EXTRACTABLES
 QLast Update : Fri Nov 30 03:43:16 2018
 Response via : Initial Calibration
 Integrator: ChemStation 6890 Scale Mode: Small noise peaks clipped

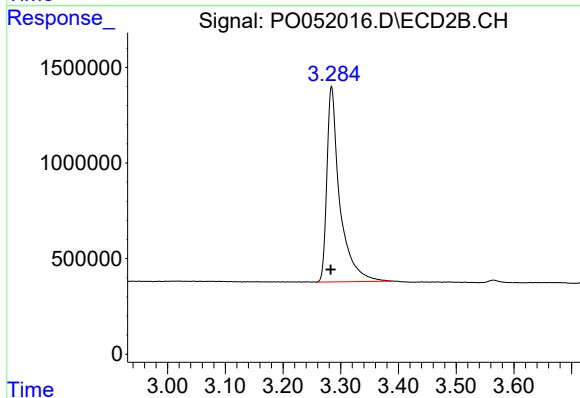
Volume Inj. : 2 µl
 Signal #1 Phase : ZB-MR1 Signal #2 Phase: ZB-MR2
 Signal #1 Info : 30Mx0.32mmx 0.50µ Signal #2 Info : 30M x 0.32mm x 0.25µm



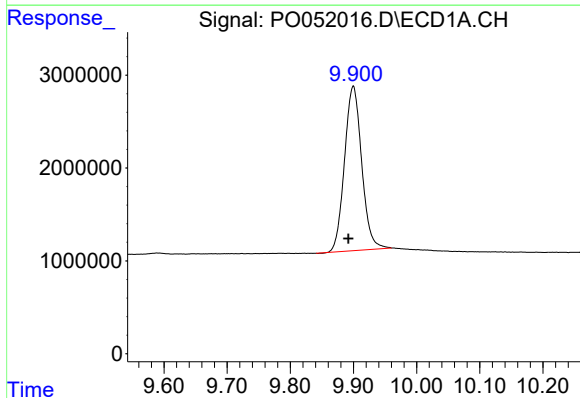


#1 Tetrachloro-m-xylene
 R.T.: 4.291 min
 Delta R.T.: 0.009 min
 Response: 56732352
 Conc: 22.99 ng/ml

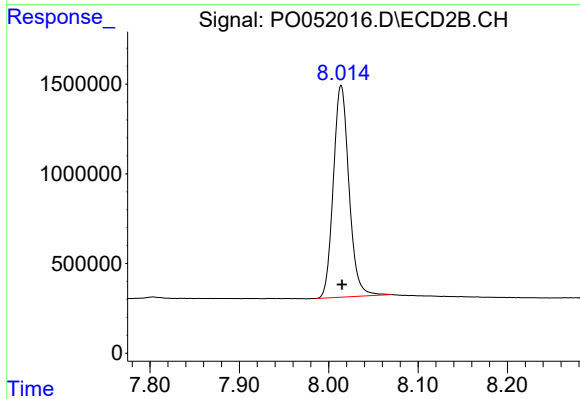
Instrument :
 ECD_O
 ClientSampleId :



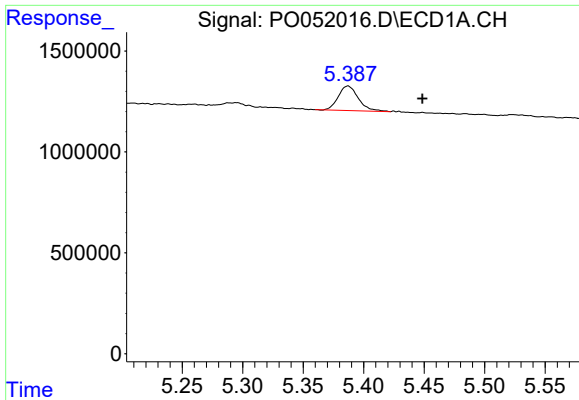
#1 Tetrachloro-m-xylene
 R.T.: 3.284 min
 Delta R.T.: 0.001 min
 Response: 15852029
 Conc: 17.71 ng/ml



#2 Decachlorobiphenyl
 R.T.: 9.900 min
 Delta R.T.: 0.008 min
 Response: 33523717
 Conc: 20.59 ng/ml

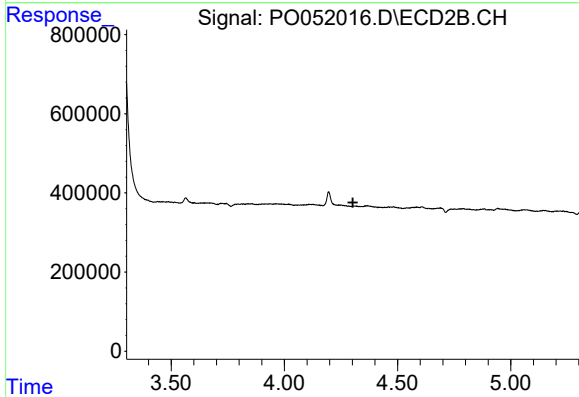


#2 Decachlorobiphenyl
 R.T.: 8.014 min
 Delta R.T.: -0.001 min
 Response: 14397183
 Conc: 21.01 ng/ml

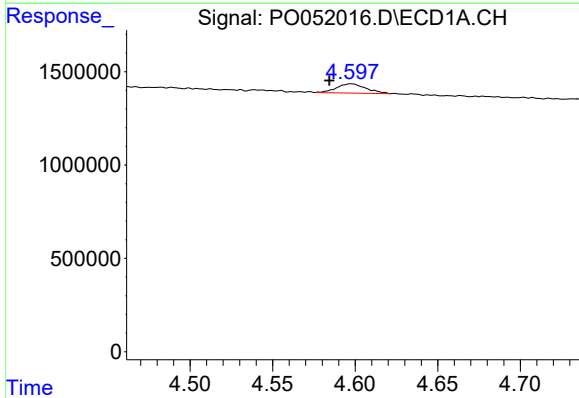


#3 AR-1016-1
 R.T.: 5.387 min
 Delta R.T.: -0.061 min
 Response: 1409903
 Conc: 25.29 ng/ml

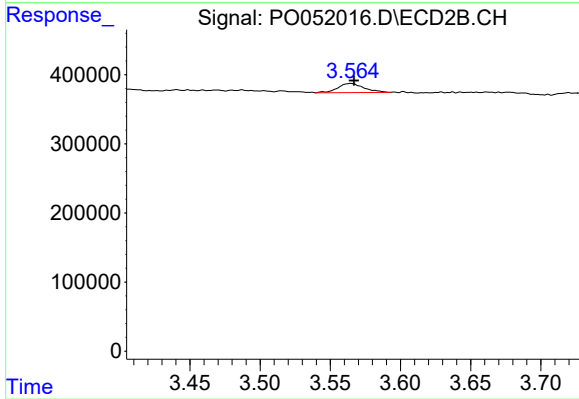
Instrument :
 ECD_O
 ClientSampleId :



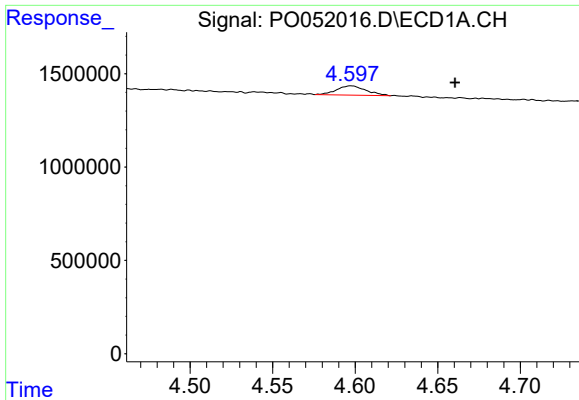
#3 AR-1016-1
 R.T.: 0.000 min
 Exp R.T. : 4.303 min
 Response: 0
 Conc: N.D.



#9 AR-1221-2
 R.T.: 4.597 min
 Delta R.T.: 0.013 min
 Response: 613819
 Conc: 42.99 ng/ml



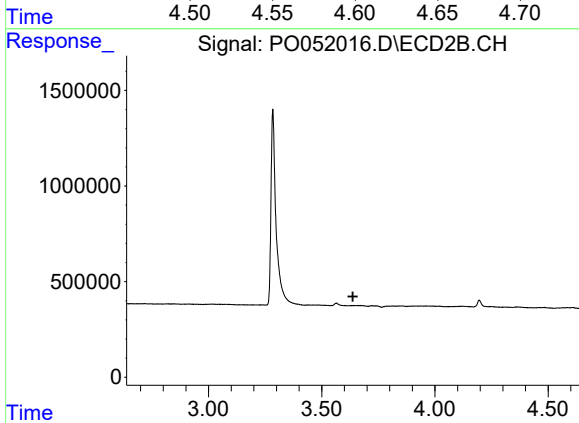
#9 AR-1221-2
 R.T.: 3.565 min
 Delta R.T.: -0.002 min
 Response: 172974
 Conc: 32.14 ng/ml



#10 AR-1221-3

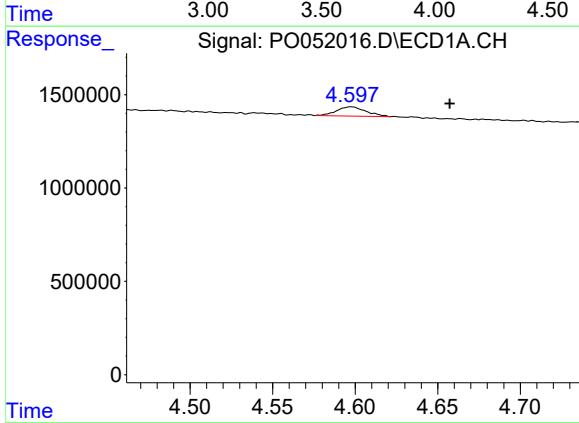
R.T.: 4.597 min
 Delta R.T.: -0.063 min
 Response: 613819
 Conc: 13.59 ng/ml

Instrument :
 ECD_O
 ClientSampled :



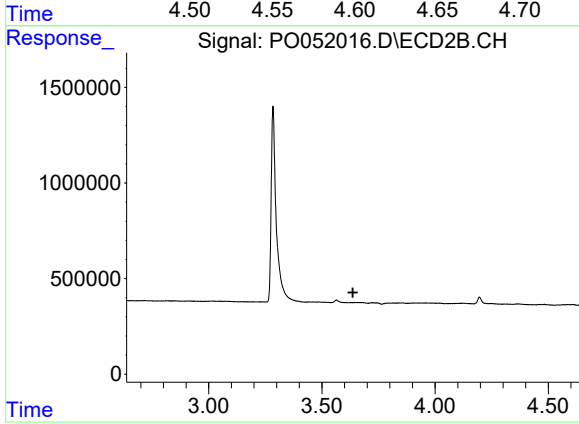
#10 AR-1221-3

R.T.: 0.000 min
 Exp R.T. : 3.638 min
 Response: 0
 Conc: N.D.



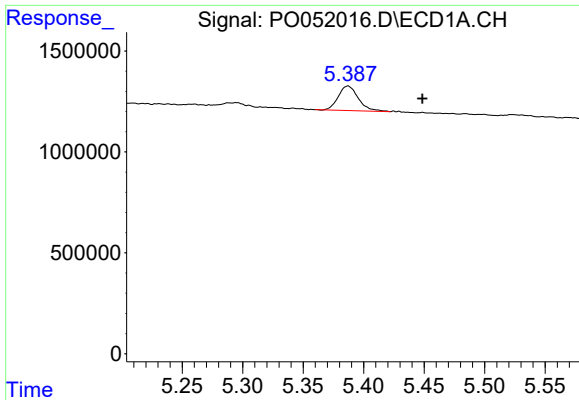
#11 AR-1232-1

R.T.: 4.597 min
 Delta R.T.: -0.060 min
 Response: 613819
 Conc: 16.60 ng/ml



#11 AR-1232-1

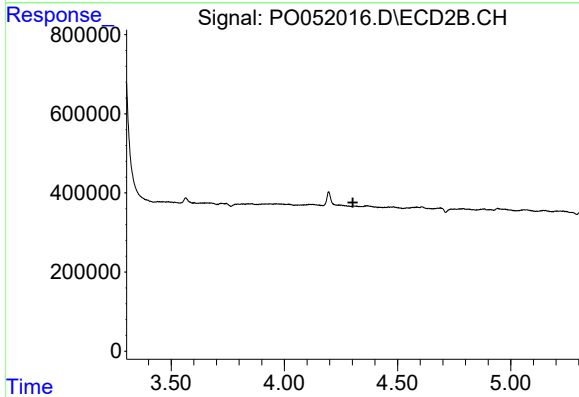
R.T.: 0.000 min
 Exp R.T. : 3.637 min
 Response: 0
 Conc: N.D.



#16 AR-1242-1

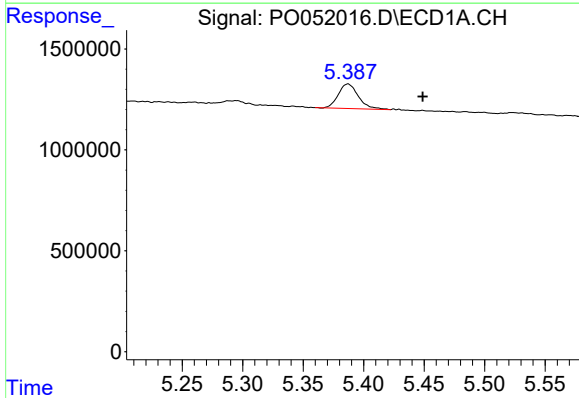
R.T.: 5.387 min
 Delta R.T.: -0.061 min
 Response: 1409903
 Conc: 33.37 ng/ml

Instrument :
 ECD_O
 ClientSampled :



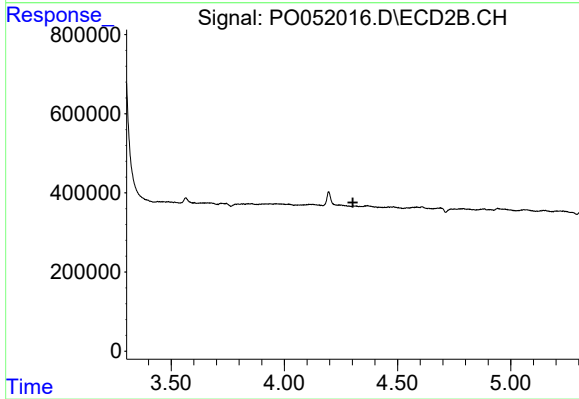
#16 AR-1242-1

R.T.: 0.000 min
 Exp R.T. : 4.303 min
 Response: 0
 Conc: N.D.



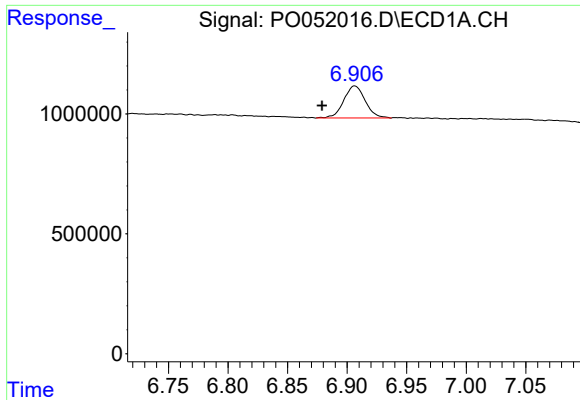
#21 AR-1248-1

R.T.: 5.387 min
 Delta R.T.: -0.062 min
 Response: 1409903
 Conc: 45.44 ng/ml



#21 AR-1248-1

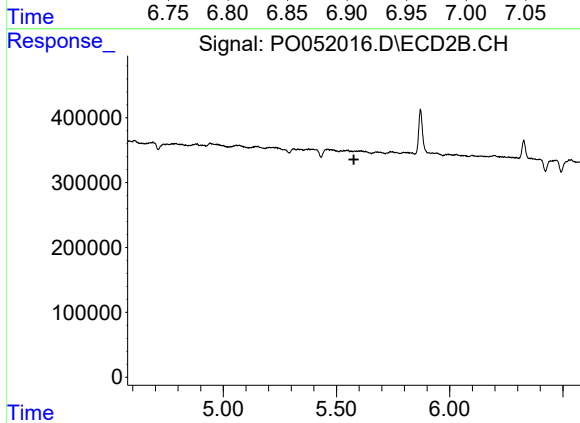
R.T.: 0.000 min
 Exp R.T. : 4.303 min
 Response: 0
 Conc: N.D.



#28 AR-1254-3

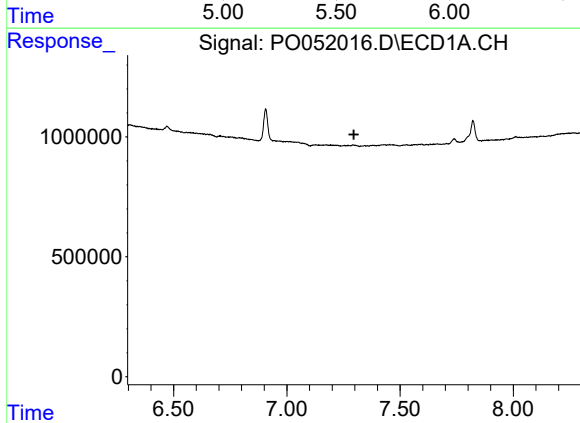
R.T.: 6.906 min
 Delta R.T.: 0.027 min
 Response: 1679611
 Conc: 18.50 ng/ml

Instrument :
 ECD_O
 ClientSampled :



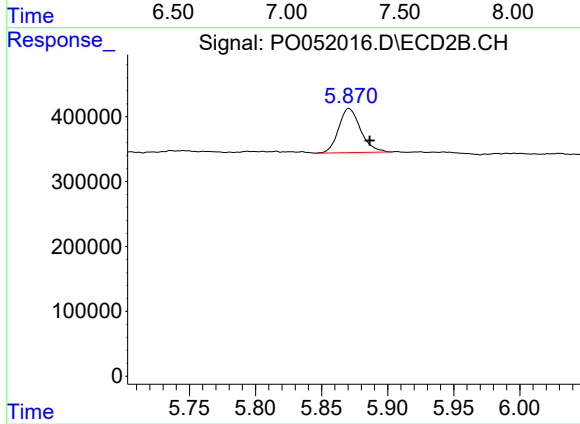
#28 AR-1254-3

R.T.: 0.000 min
 Exp R.T. : 5.577 min
 Response: 0
 Conc: N.D.



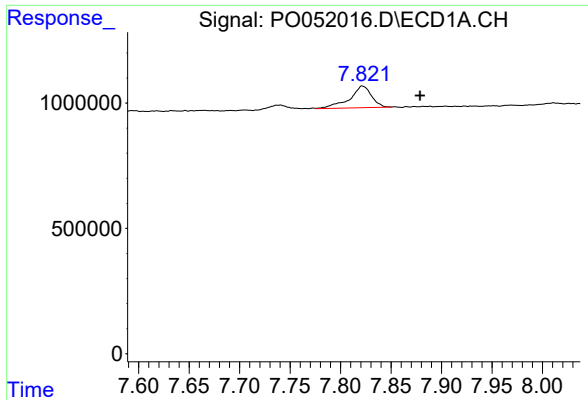
#32 AR-1260-2

R.T.: 0.000 min
 Exp R.T. : 7.296 min
 Response: 0
 Conc: N.D.



#32 AR-1260-2

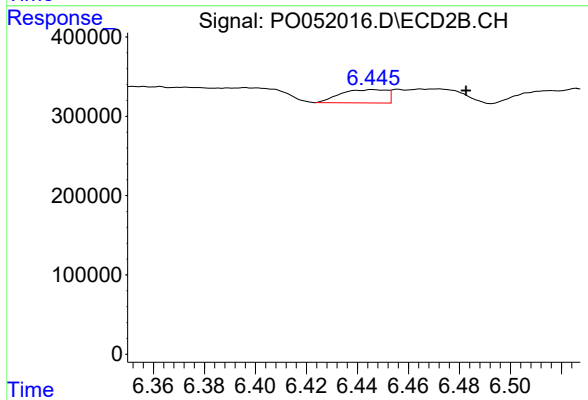
R.T.: 5.871 min
 Delta R.T.: -0.016 min
 Response: 787525
 Conc: 18.11 ng/ml



#34 AR-1260-4

R.T.: 7.821 min
Delta R.T.: -0.057 min
Response: 1294886
Conc: 18.50 ng/ml

Instrument :
ECD_O
ClientSampleId :



#34 AR-1260-4

R.T.: 6.446 min
Delta R.T.: -0.037 min
Response: 211961
Conc: 7.66 ng/ml