

Data Path : Z:\pestpcbsrv\HPCHEM1\ECD\_0\Data\PO113018\  
 Data File : P0052031.D  
 Signal(s) : Signal #1: ECD1A.CH Signal #2: ECD2B.CH  
 Acq On : 30 Nov 2018 13:19  
 Operator : SM/SJ  
 Sample : J6080-04MSD  
 Misc :  
 ALS Vial : 7 Sample Multiplier: 1

Instrument :  
 ECD\_0  
 ClientSampleId :  
 RCA-07MSD

Integration File signal 1: autoint1.e  
 Integration File signal 2: autoint2.e  
 Quant Time: Nov 30 22:07:46 2018  
 Quant Method : Z:\pestpcbsrv\HPCHEM1\ECD\_0\methods\PO112918.M  
 Quant Title : GC EXTRACTABLES  
 QLast Update : Fri Nov 30 03:43:16 2018  
 Response via : Initial Calibration  
 Integrator: ChemStation 6890 Scale Mode: Small noise peaks clipped

Volume Inj. : 2 µl  
 Signal #1 Phase : ZB-MR1 Signal #2 Phase: ZB-MR2  
 Signal #1 Info : 30Mx0.32mmx 0.50µ Signal #2 Info : 30M x 0.32mm x 0.25µm

Compound	RT#1	RT#2	Resp#1	Resp#2	ng/ml	ng/ml
-----						
System Monitoring Compounds						
1) SA Tetrachlo...	4.278	3.282	47299950	13151886	19.165	14.692
2) SA Decachlor...	9.879	8.009	23111931	8849806	14.199	12.913
Target Compounds						
3) L1 AR-1016-1	5.444	4.314	13490098	12227403	241.957	626.444 #
4) L1 AR-1016-2	5.466	4.314	20761523	12227403	244.510	277.550
5) L1 AR-1016-3	5.527	4.478	10924421	4222739	223.570	229.576
6) L1 AR-1016-4	5.625	4.521	7345693	3162909	184.297	212.288
7) L1 AR-1016-5	5.917	4.720	11373192	3783758	312.444	209.519 #
8) L2 AR-1221-1	4.480	3.485	1795093	357910	89.832	49.915 #
9) L2 AR-1221-2	4.577	3.565	2058836	547985	144.190	101.811 #
10) L2 AR-1221-3	4.652	3.636	7381330	2319799	163.397	133.544
11) L3 AR-1232-1	4.652	3.636	7381330	2319799	199.628	164.914
12) L3 AR-1232-2	5.177	4.314	15867200	12227403	948.374	708.208 #
13) L3 AR-1232-3	5.466	4.478	20761523	4222739	620.509	590.540
14) L3 AR-1232-4	5.625	4.559	7345693	3924903	468.051	656.035 #
15) L3 AR-1232-5	5.715	4.720	7133088	3783758	667.451	563.220
16) L4 AR-1242-1	5.444	4.314	13490098	12227403	319.259	831.400 #
17) L4 AR-1242-2	5.466	4.314	20761523	12227403	322.665	376.232
18) L4 AR-1242-3	5.527	4.478	10924421	4222739	294.687	308.750
19) L4 AR-1242-4	5.625	4.559	7345693	3924903	240.689	310.893 #
20) L4 AR-1242-5	6.357	5.052	3764922	6631012	126.712	404.886 #
21) L5 AR-1248-1	5.444	4.314	13490098	12227403	434.760	1011.584 #
22) L5 AR-1248-2	5.715	4.521	7133088	3162909	177.796	177.399
23) L5 AR-1248-3	5.917	4.559	11373192	3924903	253.583	219.307
24) L5 AR-1248-4	6.320	4.720	6295528	3783758	127.355	174.555 #
25) L5 AR-1248-5	6.357	5.090	3764922	2553747	80.252	119.075 #
26) L6 AR-1254-1	6.293	5.052	10928085	6631012	202.978	184.933
27) L6 AR-1254-2	6.509	5.192	13381597	4951676	158.362	160.454
28) L6 AR-1254-3	6.877	5.575	10144001	2448421	111.740	49.541 #
29) L6 AR-1254-4	7.158	5.795	5507112	1723265	78.553	55.997 #
30) L6 AR-1254-5	7.574	6.193	21440021	9798939	284.349	221.369
31) L7 AR-1260-1	7.035	5.697	14801991	8325531	210.103	237.384
32) L7 AR-1260-2	7.290	5.881	31388158	8863027	337.366	203.832 #
33) L7 AR-1260-3	7.647	6.023	11531798	6393792	176.133	159.047
34) L7 AR-1260-4	7.872	6.478	12629098	4629007	180.419	167.296
35) L7 AR-1260-5	8.181	6.718	25367126	10765140	154.108	149.304
36) L8 AR-1262-1	7.647	6.231	11531798	5078265	110.422	110.889
37) L8 AR-1262-2	8.181	6.718	25367126	10765140	129.115	129.804
38) L8 AR-1262-3	8.496	6.989	15760013	2664037	122.209	80.190 #
39) L8 AR-1262-4	8.546	7.051	9063920	7784277	157.345	127.240
40) L8 AR-1262-5	9.186	7.537	5650197	2091991	85.198	75.860
41) L9 AR-1268-1	8.496	6.989	15760013	2664037	54.365	23.200 #
42) L9 AR-1268-2	8.546	7.051	9063920	7784277	35.690	71.334 #

Data Path : Z:\pestpcbsrv\HPCHEM1\ECD\_0\Data\PO113018\  
 Data File : P0052031.D  
 Signal(s) : Signal #1: ECD1A.CH Signal #2: ECD2B.CH  
 Acq On : 30 Nov 2018 13:19  
 Operator : SM/SJ  
 Sample : J6080-04MSD  
 Misc :  
 ALS Vial : 7 Sample Multiplier: 1

Instrument :  
 ECD\_0  
 ClientSampleId :  
 RCA-07MSD

Integration File signal 1: autoint1.e  
 Integration File signal 2: autoint2.e  
 Quant Time: Nov 30 22:07:46 2018  
 Quant Method : Z:\pestpcbsrv\HPCHEM1\ECD\_0\methods\PO112918.M  
 Quant Title : GC EXTRACTABLES  
 QLast Update : Fri Nov 30 03:43:16 2018  
 Response via : Initial Calibration  
 Integrator: ChemStation 6890 Scale Mode: Small noise peaks clipped

Volume Inj. : 2 µl  
 Signal #1 Phase : ZB-MR1 Signal #2 Phase: ZB-MR2  
 Signal #1 Info : 30Mx0.32mmx 0.50µ Signal #2 Info : 30M x 0.32mm x 0.25µm

	Compound	RT#1	RT#2	Resp#1	Resp#2	ng/ml	ng/ml
43)	L9 AR-1268-3	8.775	7.246	463742	339039	2.014	3.503 #
44)	L9 AR-1268-4	9.186	7.537	5650197	2091991	66.417	60.954
45)	L9 AR-1268-5	9.570	7.799	1934580	791962	2.783	2.799

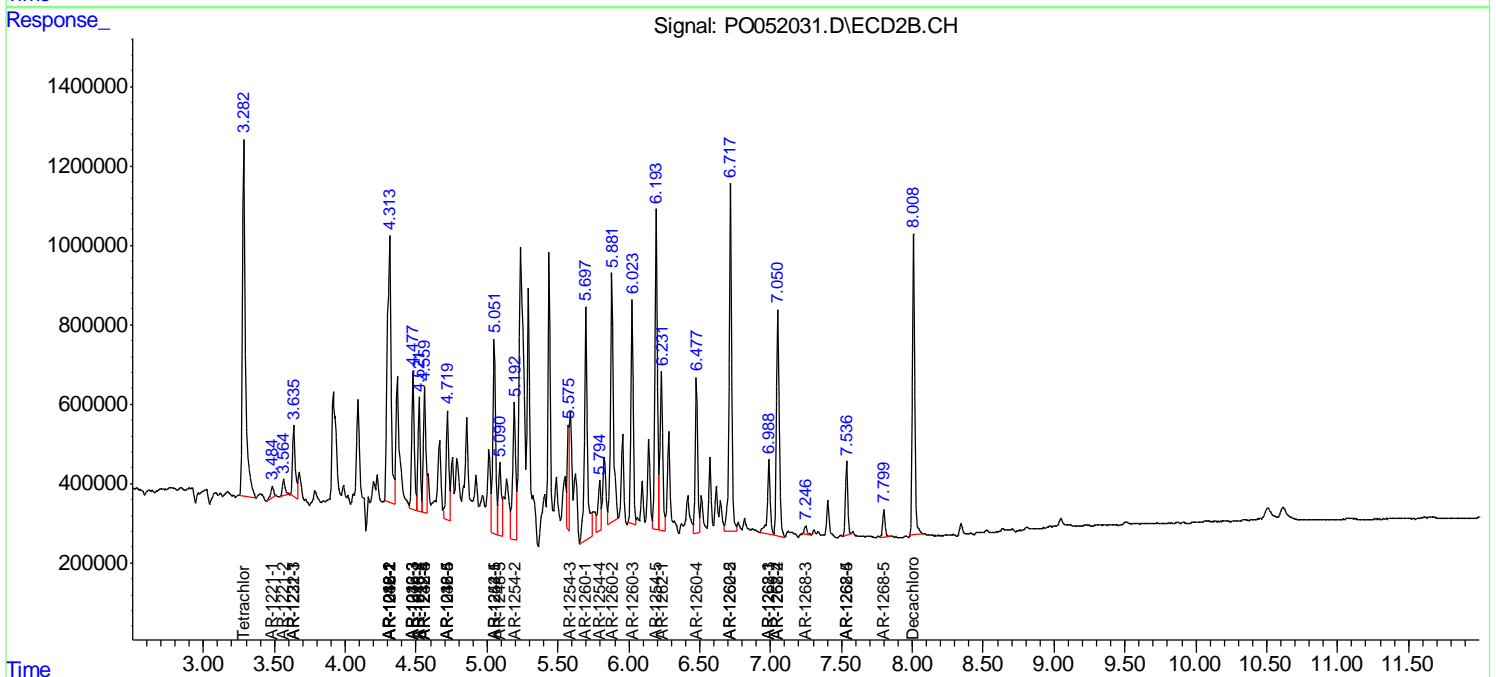
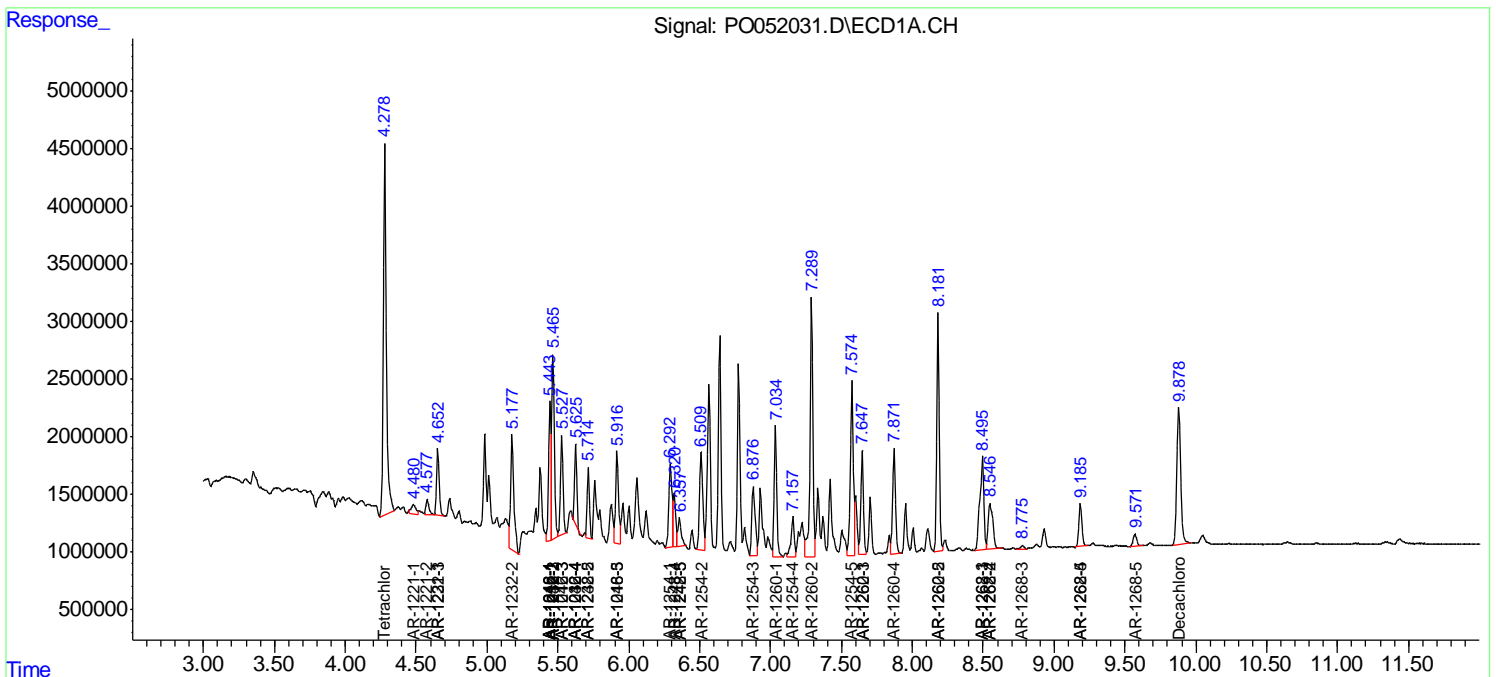
(f)=RT Delta > 1/2 Window (#)=Amounts differ by > 25% (m)=manual int.

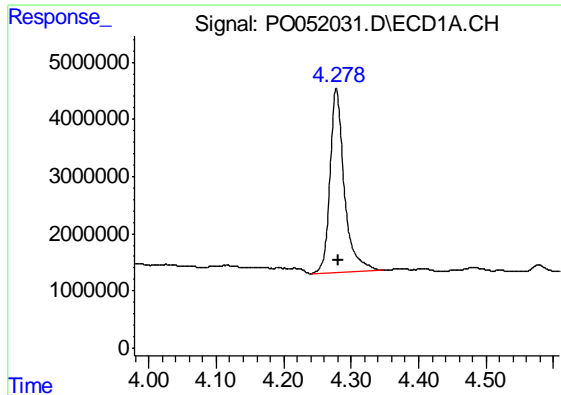
Data Path : Z:\pestpcbsrv\HPCHEM1\ECD\_O\Data\PO113018\  
 Data File : PO052031.D  
 Signal(s) : Signal #1: ECD1A.CH Signal #2: ECD2B.CH  
 Acq On : 30 Nov 2018 13:19  
 Operator : SM/SJ  
 Sample : J6080-04MSD  
 Misc :  
 ALS Vial : 7 Sample Multiplier: 1

Instrument :  
 ECD\_O  
 ClientSampled :  
 RCA-07MSD

Integration File signal 1: autoint1.e  
 Integration File signal 2: autoint2.e  
 Quant Time: Nov 30 22:07:46 2018  
 Quant Method : Z:\pestpcbsrv\HPCHEM1\ECD\_O\methods\PO112918.M  
 Quant Title : GC EXTRACTABLES  
 QLast Update : Fri Nov 30 03:43:16 2018  
 Response via : Initial Calibration  
 Integrator: ChemStation 6890 Scale Mode: Small noise peaks clipped

Volume Inj. : 2 µl  
 Signal #1 Phase : ZB-MR1 Signal #2 Phase: ZB-MR2  
 Signal #1 Info : 30Mx0.32mmx 0.50µ Signal #2 Info : 30M x 0.32mm x 0.25µm

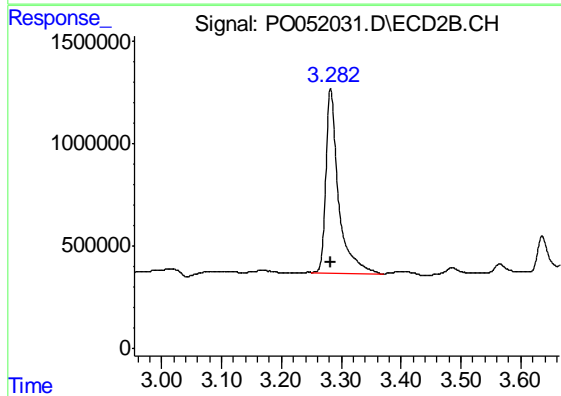




#1 Tetrachloro-m-xylene

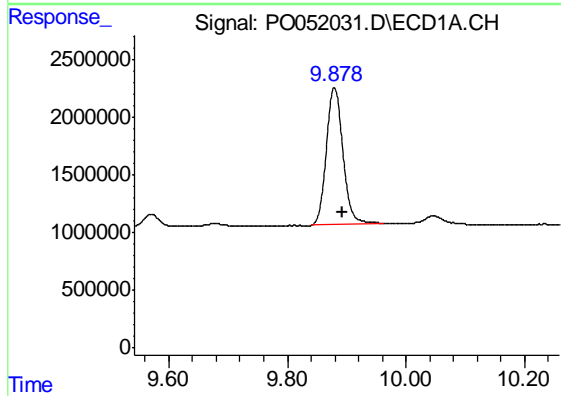
R.T.: 4.278 min  
Delta R.T.: -0.004 min  
Response: 47299950  
Conc: 19.16 ng/ml

Instrument :  
ECD\_O  
ClientSampleId :  
RCA-07MSD



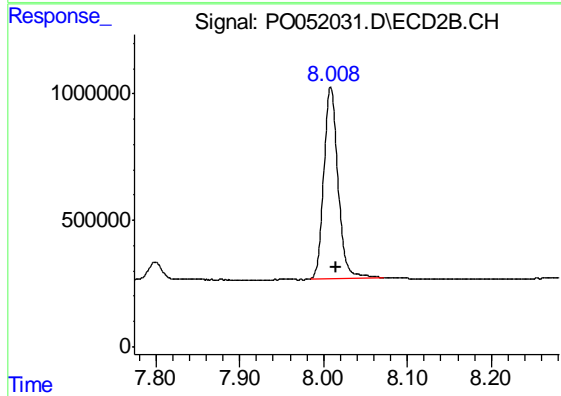
#1 Tetrachloro-m-xylene

R.T.: 3.282 min  
Delta R.T.: 0.000 min  
Response: 13151886  
Conc: 14.69 ng/ml



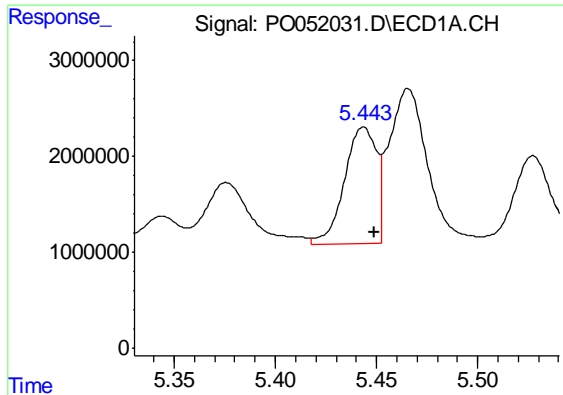
#2 Decachlorobiphenyl

R.T.: 9.879 min  
Delta R.T.: -0.013 min  
Response: 23111931  
Conc: 14.20 ng/ml



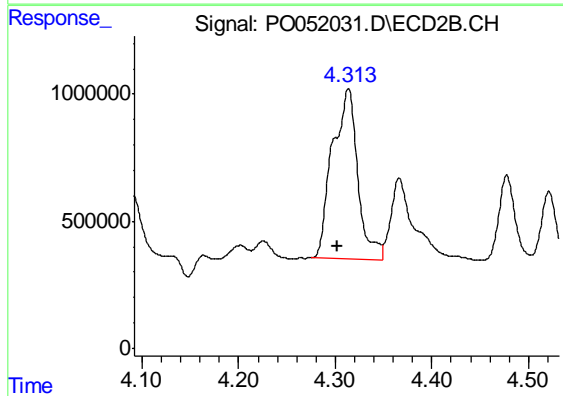
#2 Decachlorobiphenyl

R.T.: 8.009 min  
Delta R.T.: -0.006 min  
Response: 8849806  
Conc: 12.91 ng/ml

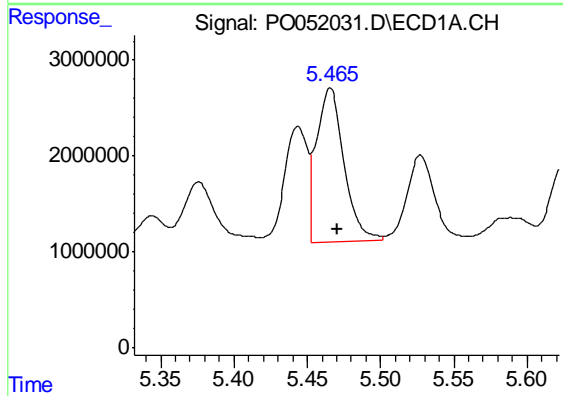


#3 AR-1016-1  
 R.T.: 5.444 min  
 Delta R.T.: -0.005 min  
 Response: 13490098  
 Conc: 241.96 ng/ml

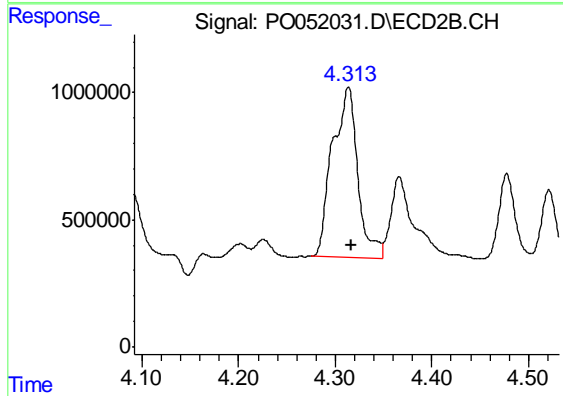
Instrument :  
 ECD\_O  
 ClientSampleId :  
 RCA-07MSD



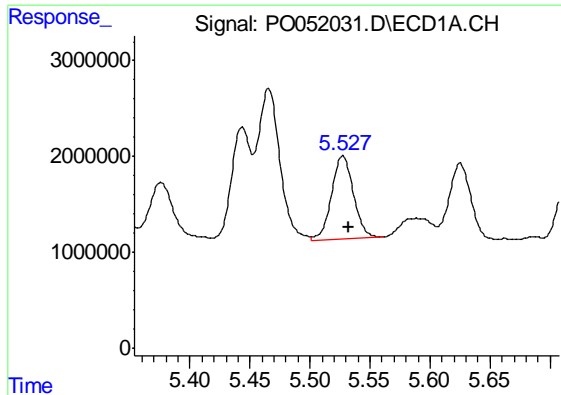
#3 AR-1016-1  
 R.T.: 4.314 min  
 Delta R.T.: 0.011 min  
 Response: 12227403  
 Conc: 626.44 ng/ml



#4 AR-1016-2  
 R.T.: 5.466 min  
 Delta R.T.: -0.005 min  
 Response: 20761523  
 Conc: 244.51 ng/ml



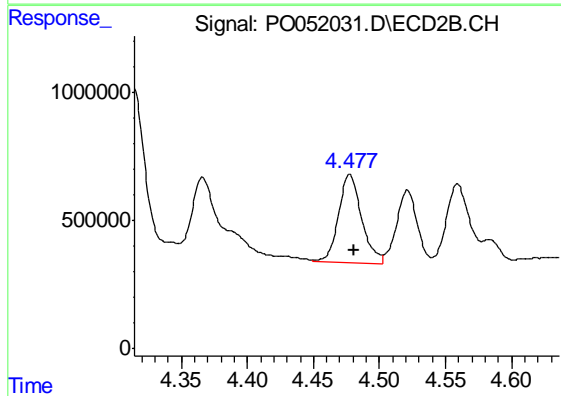
#4 AR-1016-2  
 R.T.: 4.314 min  
 Delta R.T.: -0.003 min  
 Response: 12227403  
 Conc: 277.55 ng/ml



#5 AR-1016-3

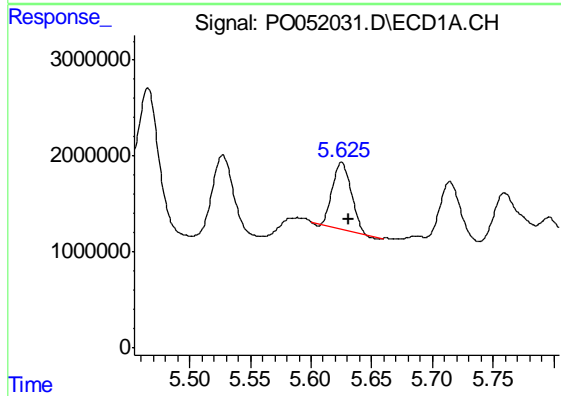
R.T.: 5.527 min  
Delta R.T.: -0.005 min  
Response: 10924421  
Conc: 223.57 ng/ml

Instrument :  
ECD\_O  
ClientSampleId :  
RCA-07MSD



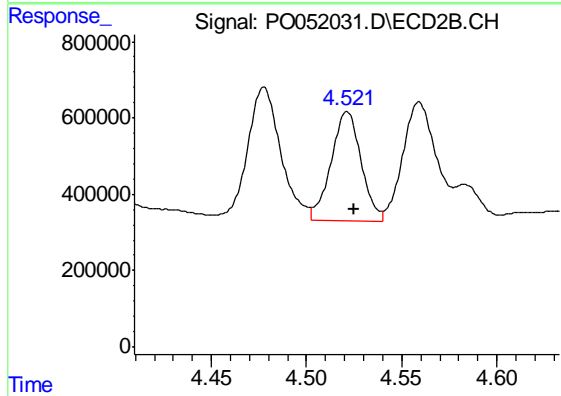
#5 AR-1016-3

R.T.: 4.478 min  
Delta R.T.: -0.003 min  
Response: 4222739  
Conc: 229.58 ng/ml



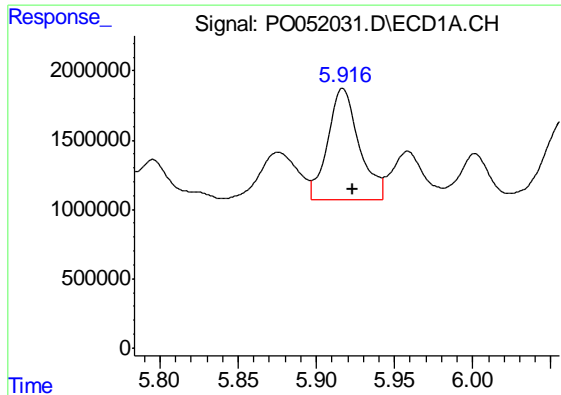
#6 AR-1016-4

R.T.: 5.625 min  
Delta R.T.: -0.006 min  
Response: 7345693  
Conc: 184.30 ng/ml



#6 AR-1016-4

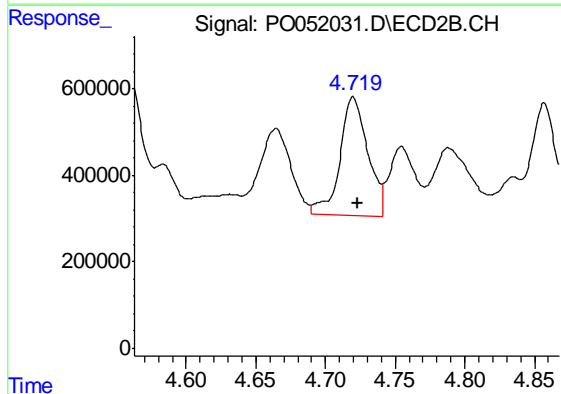
R.T.: 4.521 min  
Delta R.T.: -0.004 min  
Response: 3162909  
Conc: 212.29 ng/ml



#7 AR-1016-5

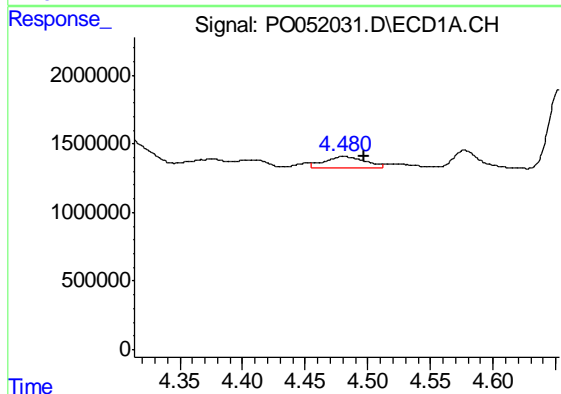
R.T.: 5.917 min  
 Delta R.T.: -0.006 min  
 Response: 11373192  
 Conc: 312.44 ng/ml

Instrument :  
 ECD\_O  
 ClientSampleId :  
 RCA-07MSD



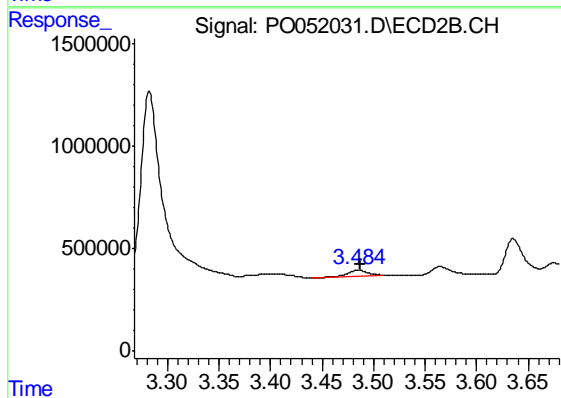
#7 AR-1016-5

R.T.: 4.720 min  
 Delta R.T.: -0.003 min  
 Response: 3783758  
 Conc: 209.52 ng/ml



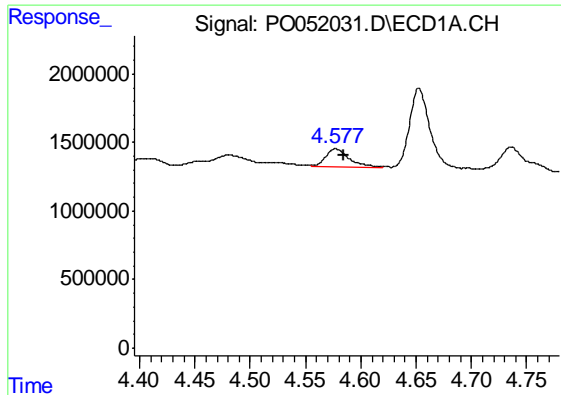
#8 AR-1221-1

R.T.: 4.480 min  
 Delta R.T.: -0.017 min  
 Response: 1795093  
 Conc: 89.83 ng/ml



#8 AR-1221-1

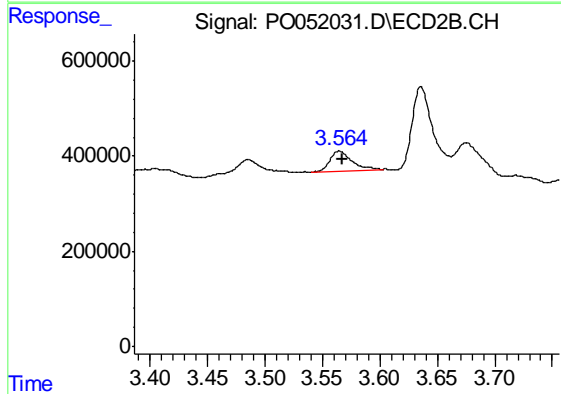
R.T.: 3.485 min  
 Delta R.T.: -0.003 min  
 Response: 357910  
 Conc: 49.92 ng/ml



#9 AR-1221-2

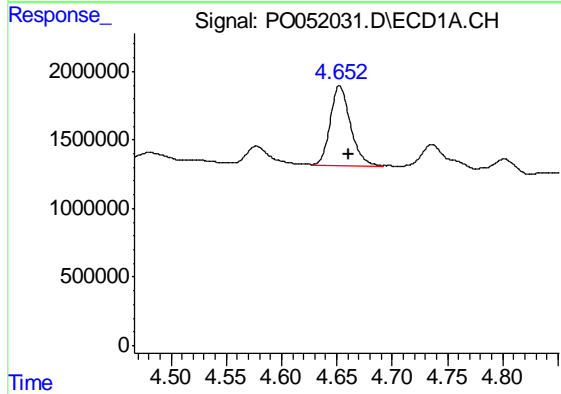
R.T.: 4.577 min  
 Delta R.T.: -0.007 min  
 Response: 2058836  
 Conc: 144.19 ng/ml

Instrument :  
 ECD\_O  
 ClientSampleId :  
 RCA-07MSD



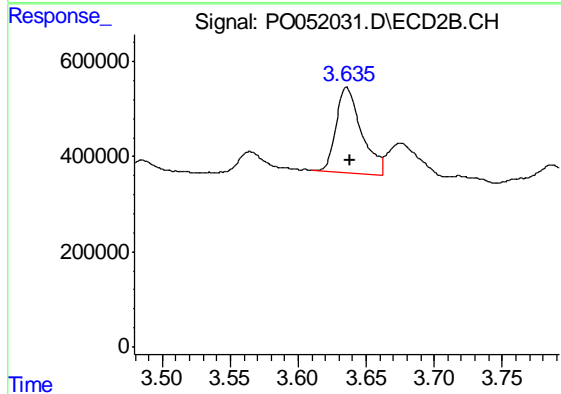
#9 AR-1221-2

R.T.: 3.565 min  
 Delta R.T.: -0.002 min  
 Response: 547985  
 Conc: 101.81 ng/ml



#10 AR-1221-3

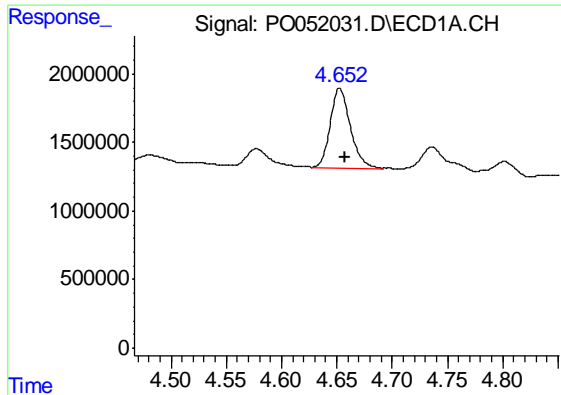
R.T.: 4.652 min  
 Delta R.T.: -0.008 min  
 Response: 7381330  
 Conc: 163.40 ng/ml



#10 AR-1221-3

R.T.: 3.636 min  
 Delta R.T.: -0.002 min  
 Response: 2319799  
 Conc: 133.54 ng/ml

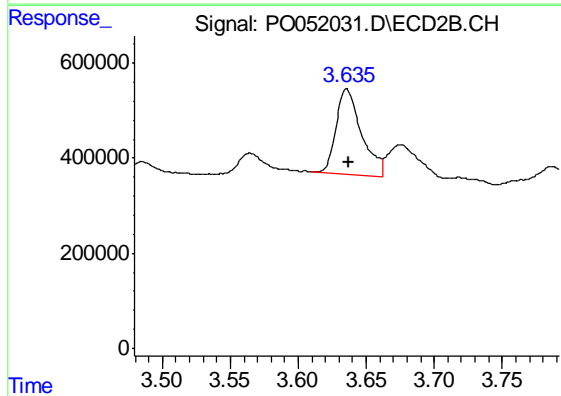




#11 AR-1232-1

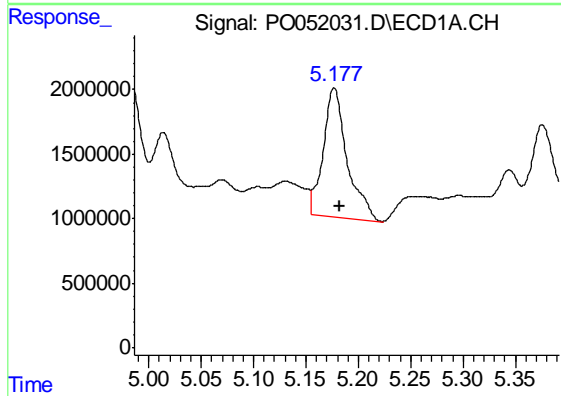
R.T.: 4.652 min  
 Delta R.T.: -0.005 min  
 Response: 7381330  
 Conc: 199.63 ng/ml

Instrument :  
 ECD\_O  
 ClientSampleId :  
 RCA-07MSD



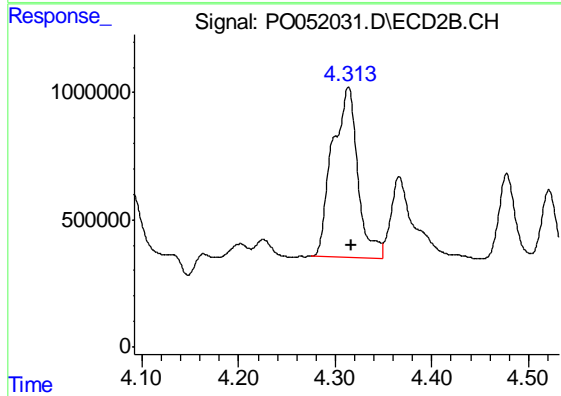
#11 AR-1232-1

R.T.: 3.636 min  
 Delta R.T.: -0.002 min  
 Response: 2319799  
 Conc: 164.91 ng/ml



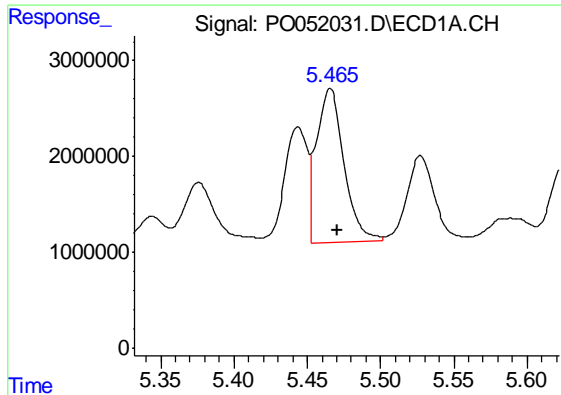
#12 AR-1232-2

R.T.: 5.177 min  
 Delta R.T.: -0.005 min  
 Response: 15867200  
 Conc: 948.37 ng/ml



#12 AR-1232-2

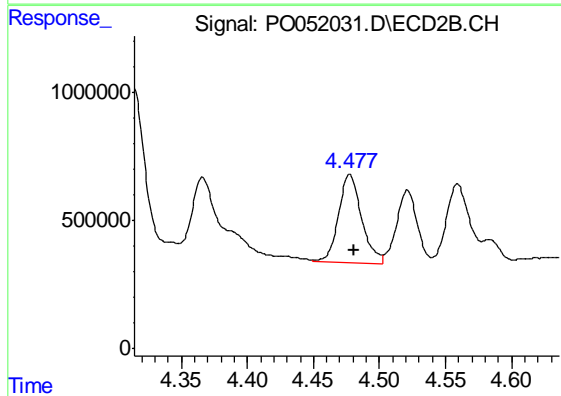
R.T.: 4.314 min  
 Delta R.T.: -0.003 min  
 Response: 12227403  
 Conc: 708.21 ng/ml



#13 AR-1232-3

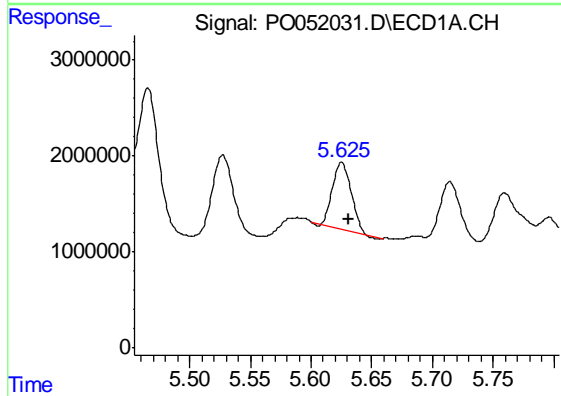
R.T.: 5.466 min  
 Delta R.T.: -0.005 min  
 Response: 20761523  
 Conc: 620.51 ng/ml

Instrument :  
 ECD\_O  
 ClientSampleId :  
 RCA-07MSD



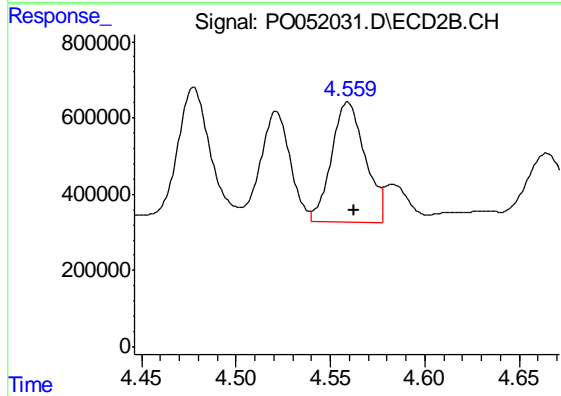
#13 AR-1232-3

R.T.: 4.478 min  
 Delta R.T.: -0.003 min  
 Response: 4222739  
 Conc: 590.54 ng/ml



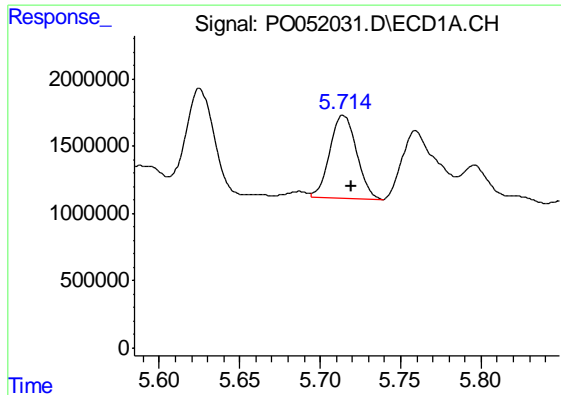
#14 AR-1232-4

R.T.: 5.625 min  
 Delta R.T.: -0.006 min  
 Response: 7345693  
 Conc: 468.05 ng/ml



#14 AR-1232-4

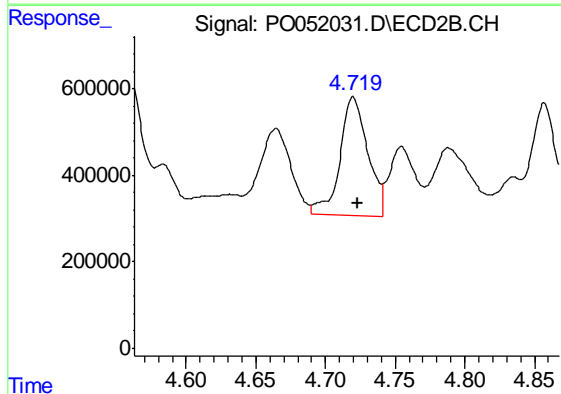
R.T.: 4.559 min  
 Delta R.T.: -0.003 min  
 Response: 3924903  
 Conc: 656.03 ng/ml



#15 AR-1232-5

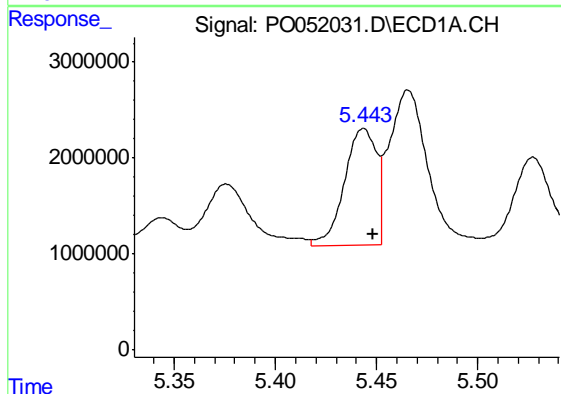
R.T.: 5.715 min  
 Delta R.T.: -0.005 min  
 Response: 7133088  
 Conc: 667.45 ng/ml

Instrument :  
 ECD\_O  
 ClientSampleId :  
 RCA-07MSD



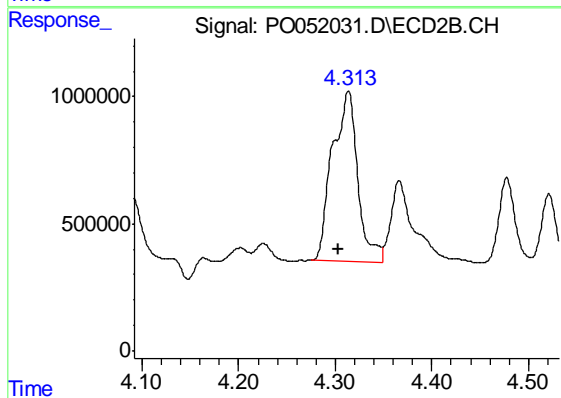
#15 AR-1232-5

R.T.: 4.720 min  
 Delta R.T.: -0.004 min  
 Response: 3783758  
 Conc: 563.22 ng/ml



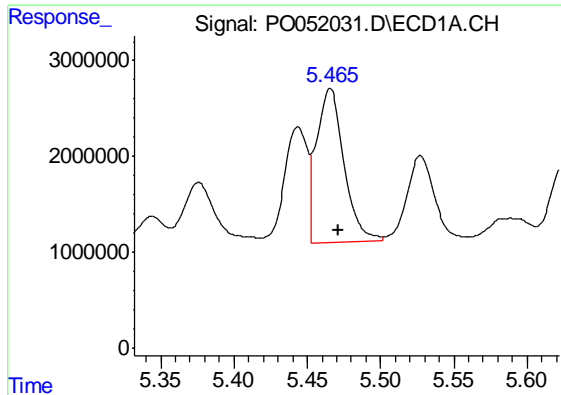
#16 AR-1242-1

R.T.: 5.444 min  
 Delta R.T.: -0.005 min  
 Response: 13490098  
 Conc: 319.26 ng/ml



#16 AR-1242-1

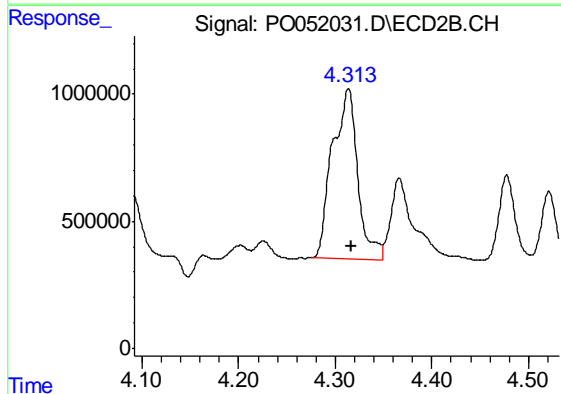
R.T.: 4.314 min  
 Delta R.T.: 0.011 min  
 Response: 12227403  
 Conc: 831.40 ng/ml



#17 AR-1242-2

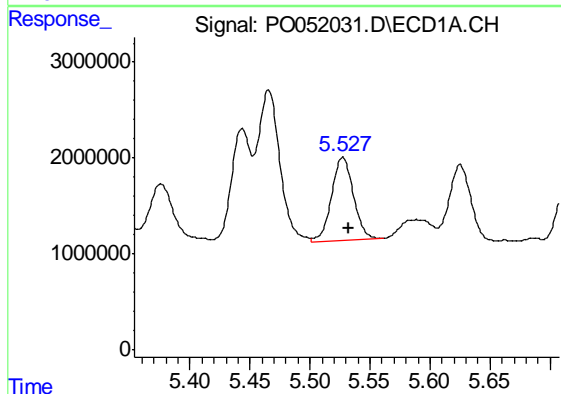
R.T.: 5.466 min  
 Delta R.T.: -0.005 min  
 Response: 20761523  
 Conc: 322.66 ng/ml

Instrument :  
 ECD\_O  
 ClientSampled :  
 RCA-07MSD



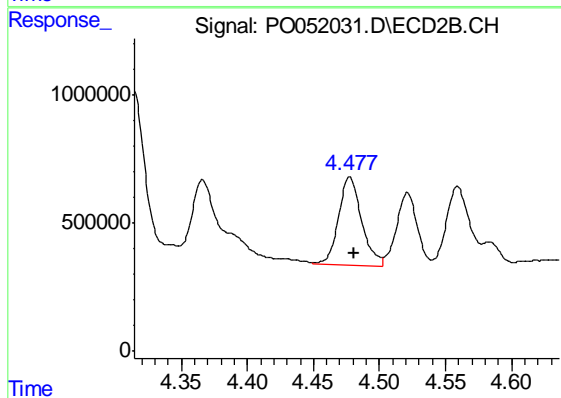
#17 AR-1242-2

R.T.: 4.314 min  
 Delta R.T.: -0.003 min  
 Response: 12227403  
 Conc: 376.23 ng/ml



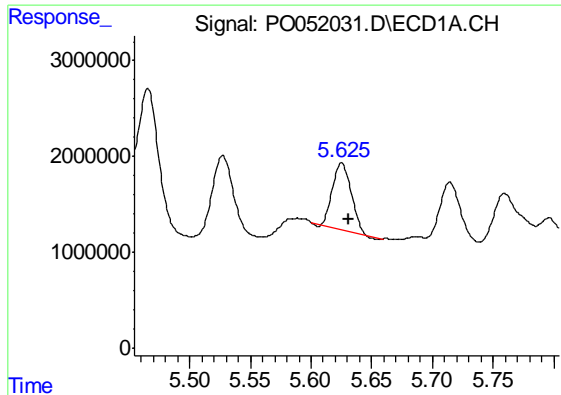
#18 AR-1242-3

R.T.: 5.527 min  
 Delta R.T.: -0.005 min  
 Response: 10924421  
 Conc: 294.69 ng/ml



#18 AR-1242-3

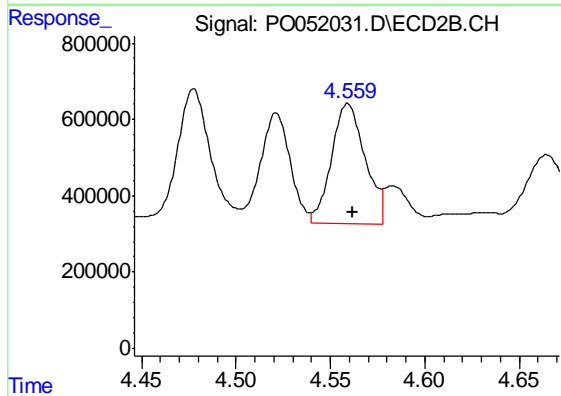
R.T.: 4.478 min  
 Delta R.T.: -0.003 min  
 Response: 4222739  
 Conc: 308.75 ng/ml



#19 AR-1242-4

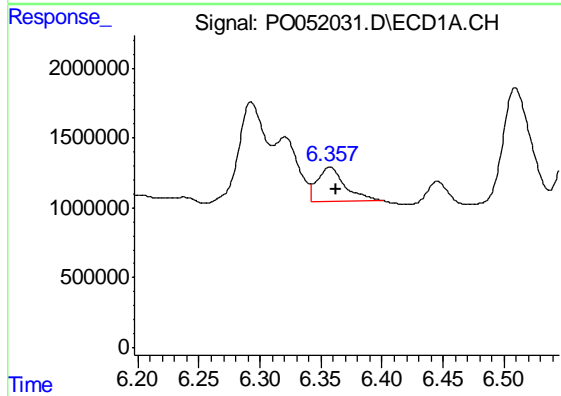
R.T.: 5.625 min  
 Delta R.T.: -0.006 min  
 Response: 7345693  
 Conc: 240.69 ng/ml

Instrument :  
 ECD\_O  
 ClientSampleId :  
 RCA-07MSD



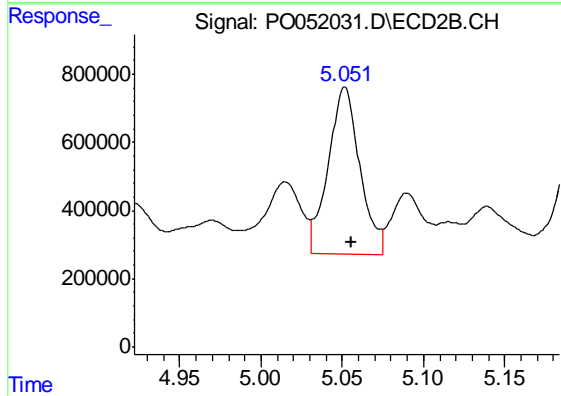
#19 AR-1242-4

R.T.: 4.559 min  
 Delta R.T.: -0.003 min  
 Response: 3924903  
 Conc: 310.89 ng/ml



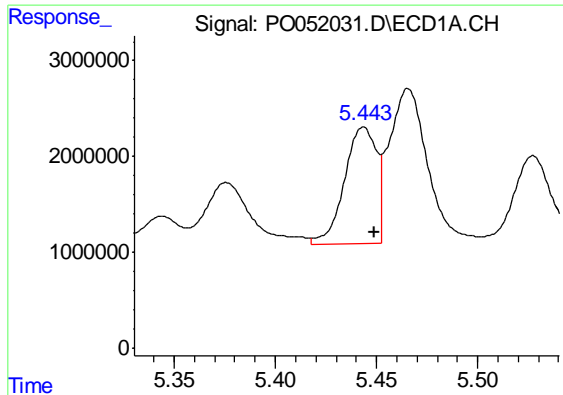
#20 AR-1242-5

R.T.: 6.357 min  
 Delta R.T.: -0.005 min  
 Response: 3764922  
 Conc: 126.71 ng/ml



#20 AR-1242-5

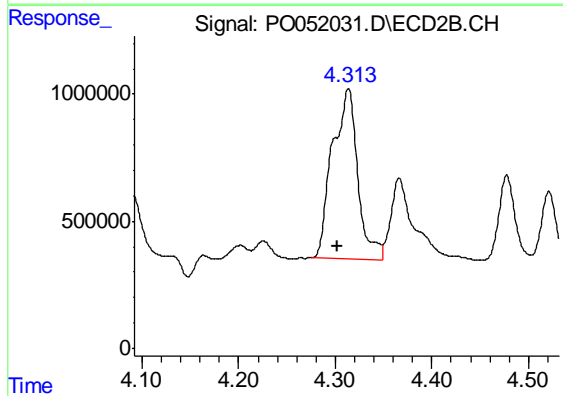
R.T.: 5.052 min  
 Delta R.T.: -0.004 min  
 Response: 6631012  
 Conc: 404.89 ng/ml



#21 AR-1248-1

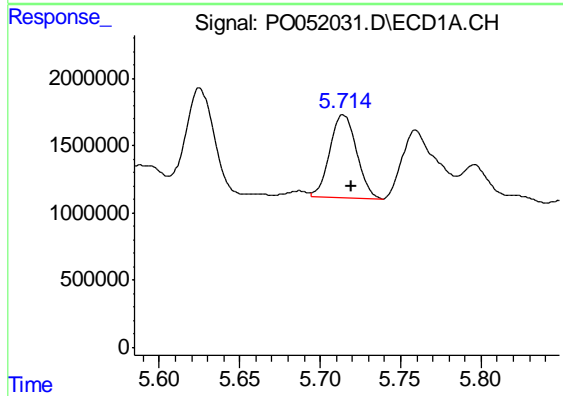
R.T.: 5.444 min  
Delta R.T.: -0.005 min  
Response: 13490098  
Conc: 434.76 ng/ml

Instrument :  
ECD\_O  
ClientSampleId :  
RCA-07MSD



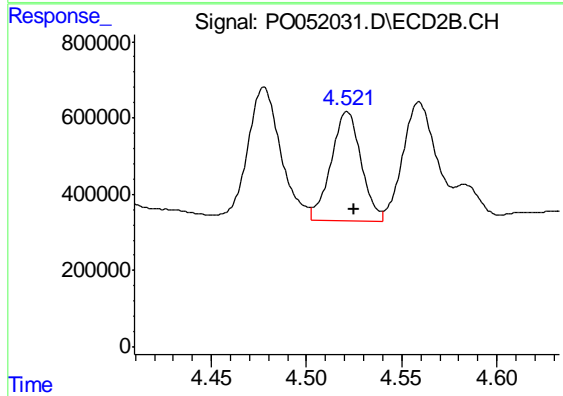
#21 AR-1248-1

R.T.: 4.314 min  
Delta R.T.: 0.011 min  
Response: 12227403  
Conc: 1011.58 ng/ml



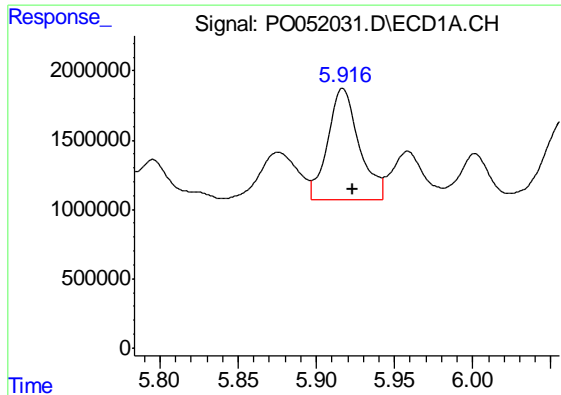
#22 AR-1248-2

R.T.: 5.715 min  
Delta R.T.: -0.005 min  
Response: 7133088  
Conc: 177.80 ng/ml



#22 AR-1248-2

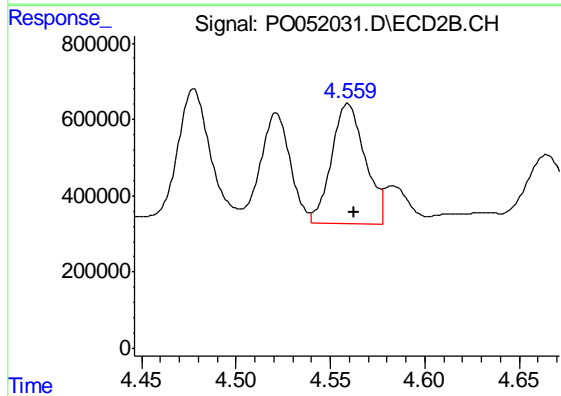
R.T.: 4.521 min  
Delta R.T.: -0.004 min  
Response: 3162909  
Conc: 177.40 ng/ml



#23 AR-1248-3

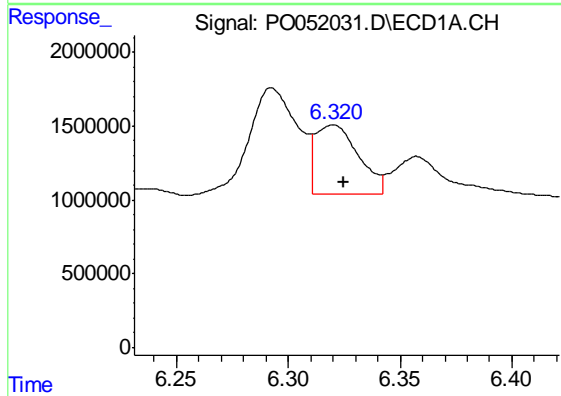
R.T.: 5.917 min  
 Delta R.T.: -0.006 min  
 Response: 11373192  
 Conc: 253.58 ng/ml

Instrument :  
 ECD\_O  
 ClientSampled :  
 RCA-07MSD



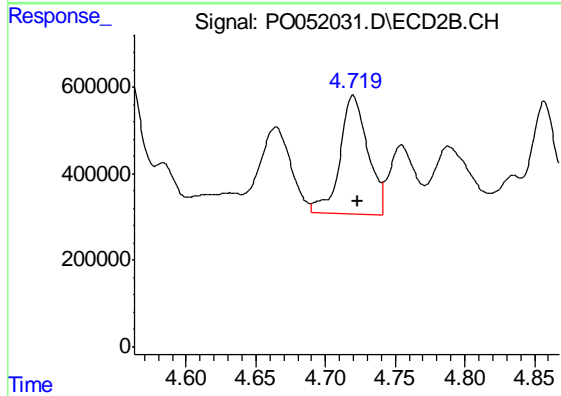
#23 AR-1248-3

R.T.: 4.559 min  
 Delta R.T.: -0.004 min  
 Response: 3924903  
 Conc: 219.31 ng/ml



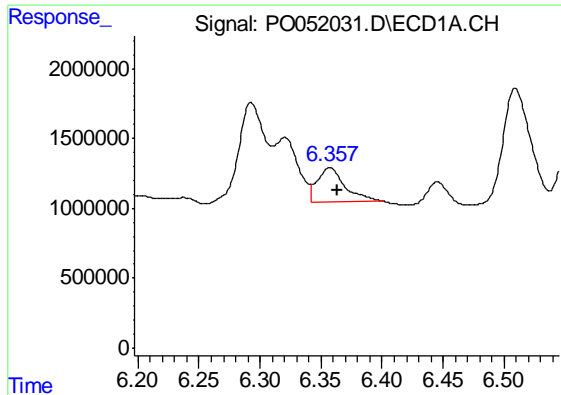
#24 AR-1248-4

R.T.: 6.320 min  
 Delta R.T.: -0.005 min  
 Response: 6295528  
 Conc: 127.35 ng/ml



#24 AR-1248-4

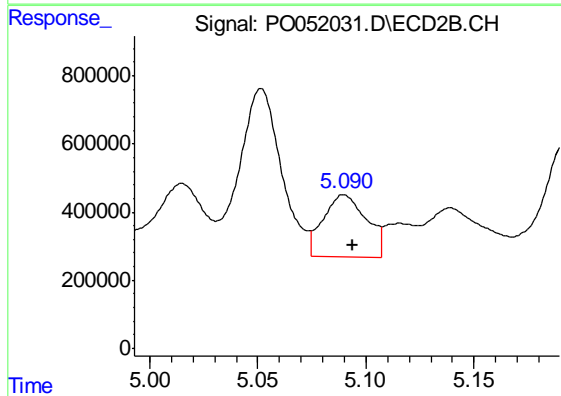
R.T.: 4.720 min  
 Delta R.T.: -0.003 min  
 Response: 3783758  
 Conc: 174.56 ng/ml



#25 AR-1248-5

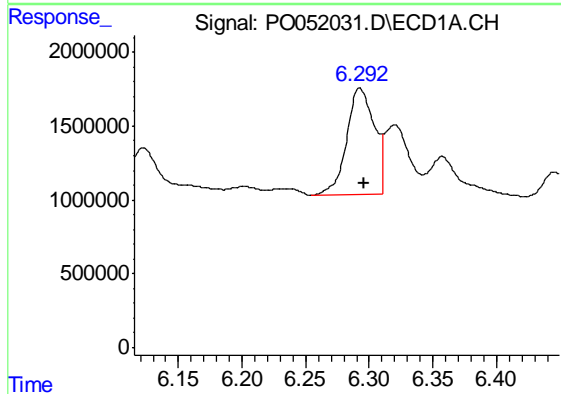
R.T.: 6.357 min  
 Delta R.T.: -0.006 min  
 Response: 3764922  
 Conc: 80.25 ng/ml

Instrument :  
 ECD\_O  
 ClientSampled :  
 RCA-07MSD



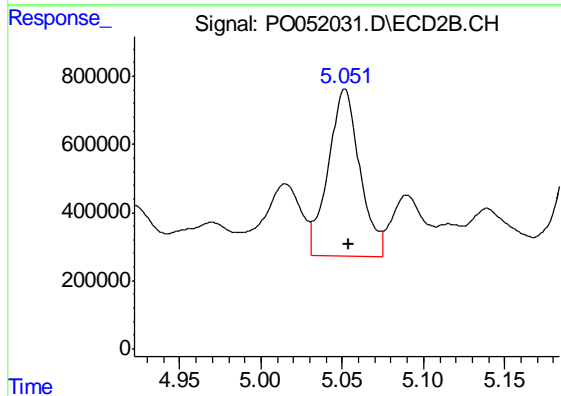
#25 AR-1248-5

R.T.: 5.090 min  
 Delta R.T.: -0.004 min  
 Response: 2553747  
 Conc: 119.08 ng/ml



#26 AR-1254-1

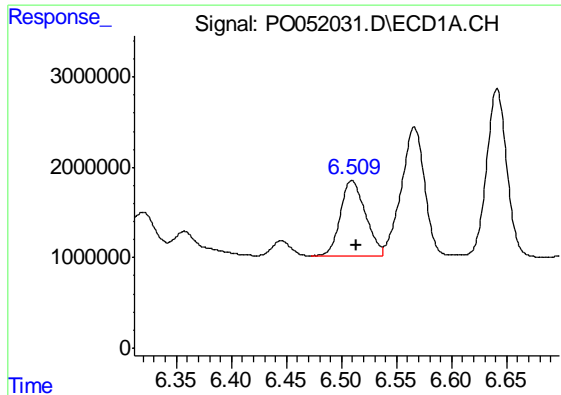
R.T.: 6.293 min  
 Delta R.T.: -0.003 min  
 Response: 10928085  
 Conc: 202.98 ng/ml



#26 AR-1254-1

R.T.: 5.052 min  
 Delta R.T.: -0.003 min  
 Response: 6631012  
 Conc: 184.93 ng/ml

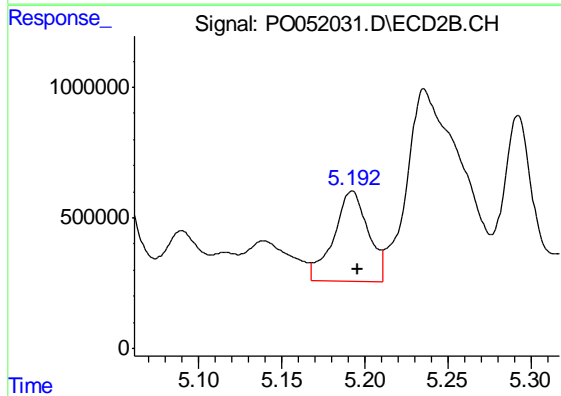




#27 AR-1254-2

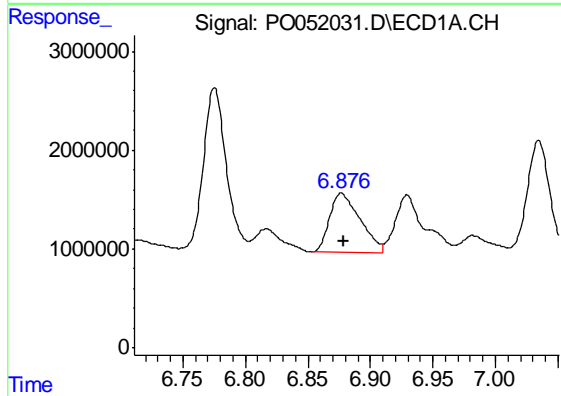
R.T.: 6.509 min  
 Delta R.T.: -0.004 min  
 Response: 13381597  
 Conc: 158.36 ng/ml

Instrument :  
 ECD\_O  
 ClientSampleId :  
 RCA-07MSD



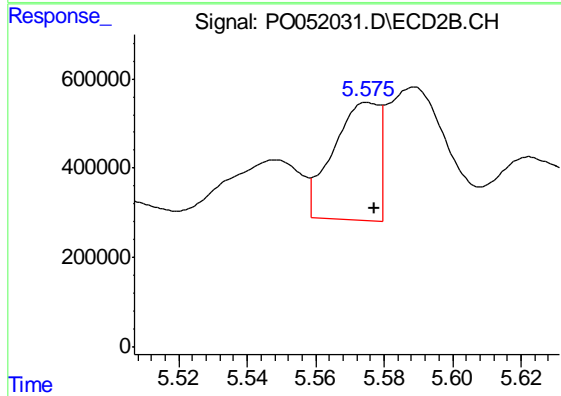
#27 AR-1254-2

R.T.: 5.192 min  
 Delta R.T.: -0.004 min  
 Response: 4951676  
 Conc: 160.45 ng/ml



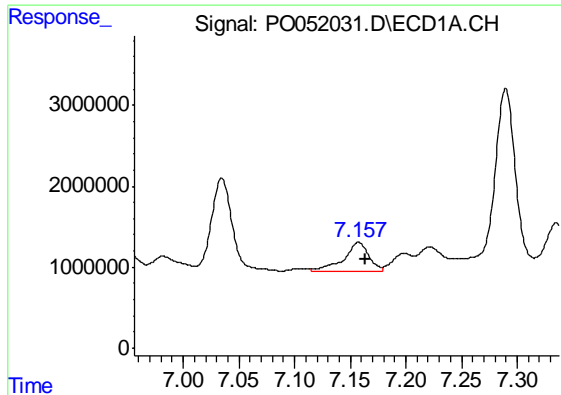
#28 AR-1254-3

R.T.: 6.877 min  
 Delta R.T.: -0.002 min  
 Response: 10144001  
 Conc: 111.74 ng/ml



#28 AR-1254-3

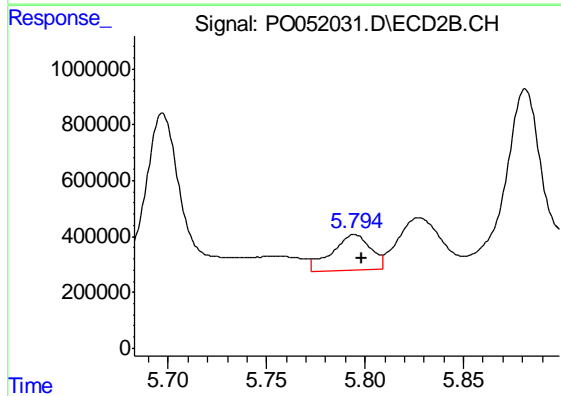
R.T.: 5.575 min  
 Delta R.T.: -0.002 min  
 Response: 2448421  
 Conc: 49.54 ng/ml



#29 AR-1254-4

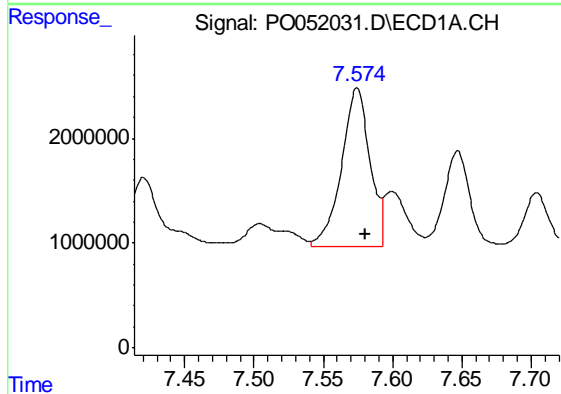
R.T.: 7.158 min  
 Delta R.T.: -0.006 min  
 Response: 5507112  
 Conc: 78.55 ng/ml

Instrument :  
 ECD\_O  
 ClientSampleId :  
 RCA-07MSD



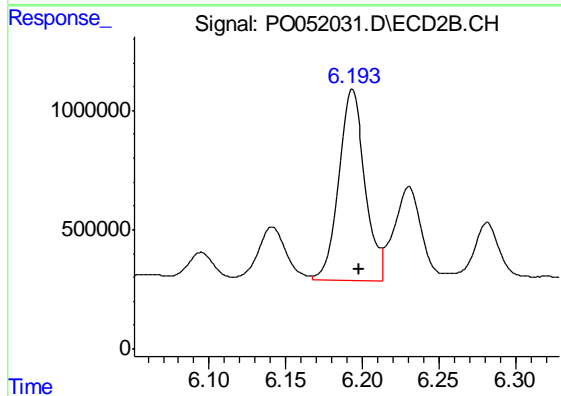
#29 AR-1254-4

R.T.: 5.795 min  
 Delta R.T.: -0.004 min  
 Response: 1723265  
 Conc: 56.00 ng/ml



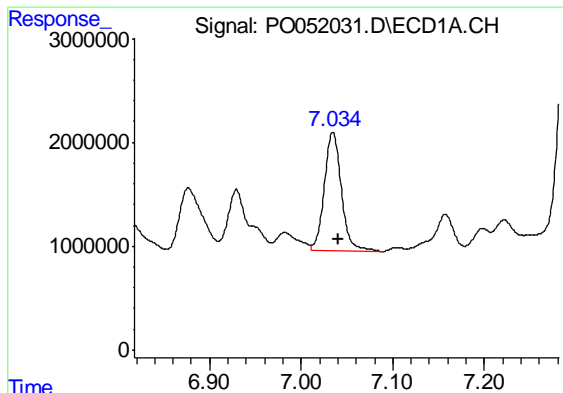
#30 AR-1254-5

R.T.: 7.574 min  
 Delta R.T.: -0.006 min  
 Response: 21440021  
 Conc: 284.35 ng/ml



#30 AR-1254-5

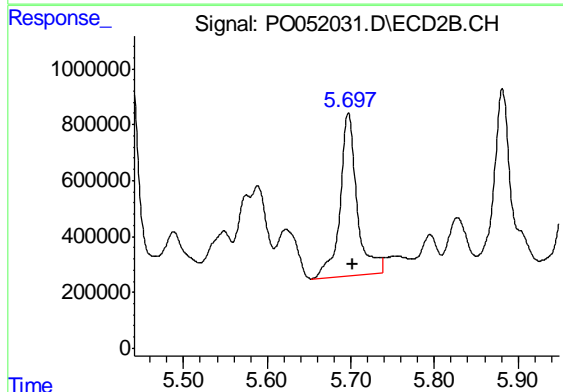
R.T.: 6.193 min  
 Delta R.T.: -0.005 min  
 Response: 9798939  
 Conc: 221.37 ng/ml



#31 AR-1260-1

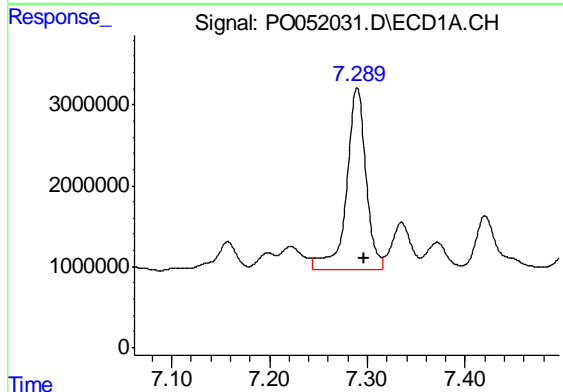
R.T.: 7.035 min  
 Delta R.T.: -0.006 min  
 Response: 14801991  
 Conc: 210.10 ng/ml

Instrument :  
 ECD\_O  
 ClientSampleId :  
 RCA-07MSD



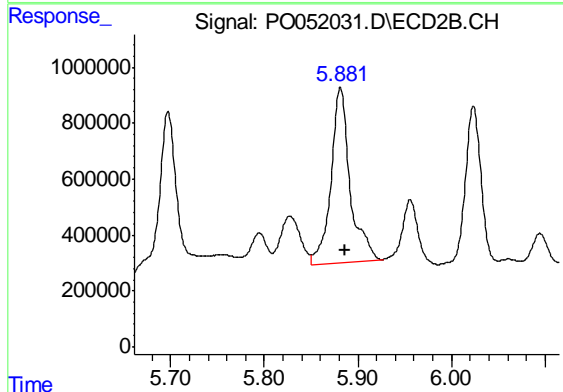
#31 AR-1260-1

R.T.: 5.697 min  
 Delta R.T.: -0.005 min  
 Response: 8325531  
 Conc: 237.38 ng/ml



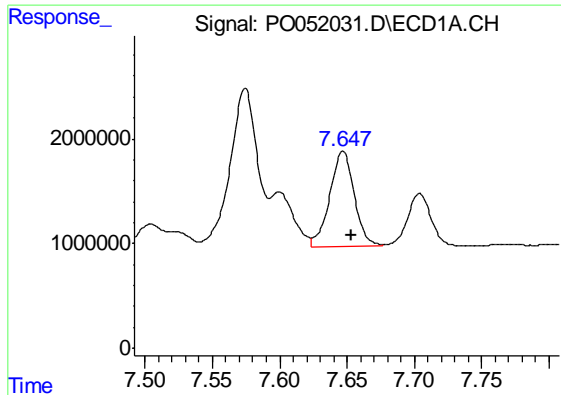
#32 AR-1260-2

R.T.: 7.290 min  
 Delta R.T.: -0.007 min  
 Response: 31388158  
 Conc: 337.37 ng/ml



#32 AR-1260-2

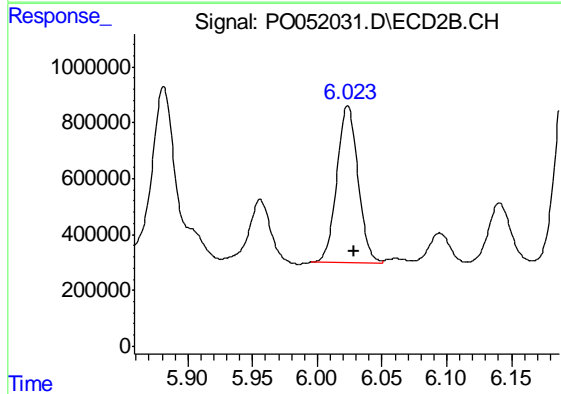
R.T.: 5.881 min  
 Delta R.T.: -0.005 min  
 Response: 8863027  
 Conc: 203.83 ng/ml



#33 AR-1260-3

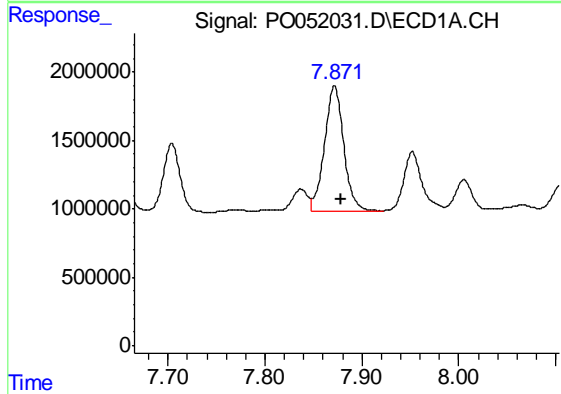
R.T.: 7.647 min  
 Delta R.T.: -0.006 min  
 Response: 11531798  
 Conc: 176.13 ng/ml

Instrument :  
 ECD\_O  
 ClientSampleId :  
 RCA-07MSD



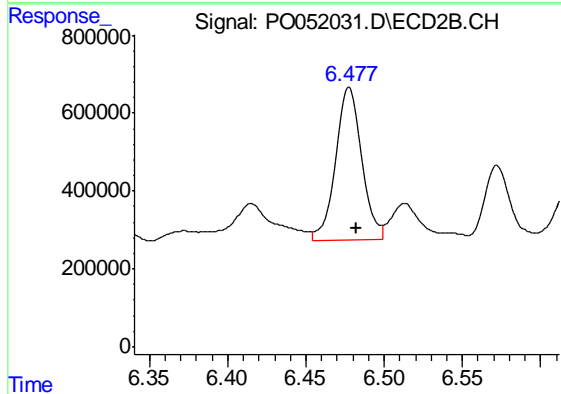
#33 AR-1260-3

R.T.: 6.023 min  
 Delta R.T.: -0.005 min  
 Response: 6393792  
 Conc: 159.05 ng/ml



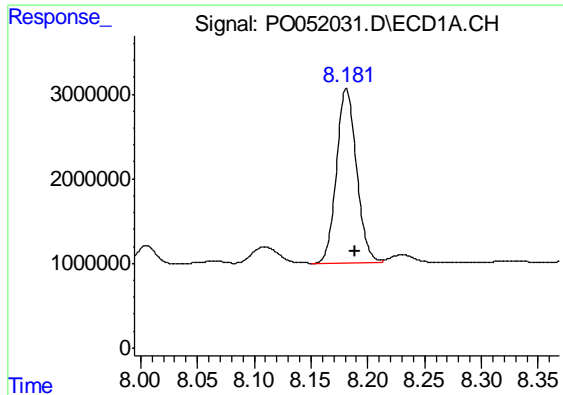
#34 AR-1260-4

R.T.: 7.872 min  
 Delta R.T.: -0.007 min  
 Response: 12629098  
 Conc: 180.42 ng/ml



#34 AR-1260-4

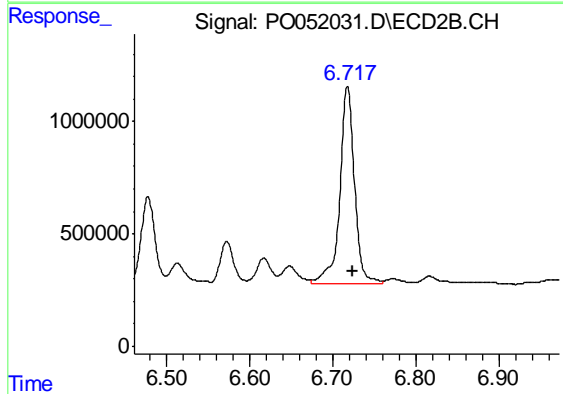
R.T.: 6.478 min  
 Delta R.T.: -0.005 min  
 Response: 4629007  
 Conc: 167.30 ng/ml



#35 AR-1260-5

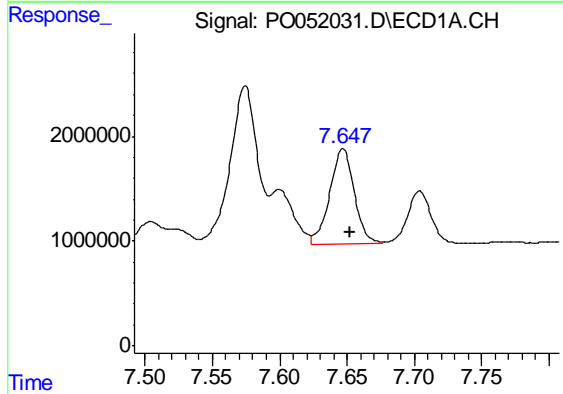
R.T.: 8.181 min  
Delta R.T.: -0.008 min  
Response: 25367126  
Conc: 154.11 ng/ml

Instrument :  
ECD\_O  
ClientSampleId :  
RCA-07MSD



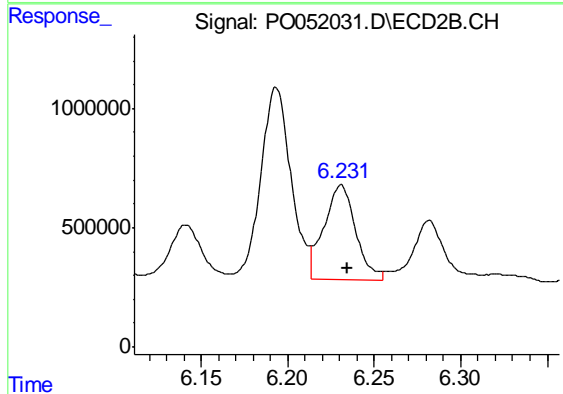
#35 AR-1260-5

R.T.: 6.718 min  
Delta R.T.: -0.006 min  
Response: 10765140  
Conc: 149.30 ng/ml



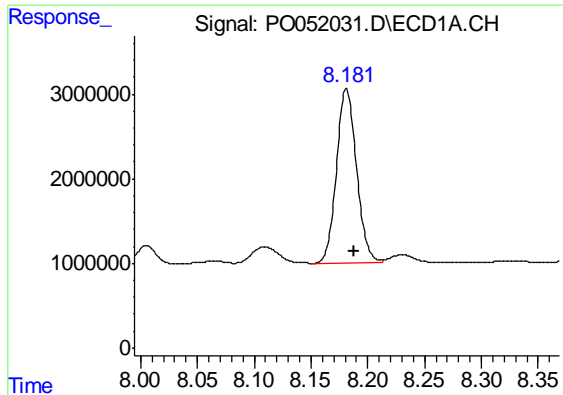
#36 AR-1262-1

R.T.: 7.647 min  
Delta R.T.: -0.005 min  
Response: 11531798  
Conc: 110.42 ng/ml



#36 AR-1262-1

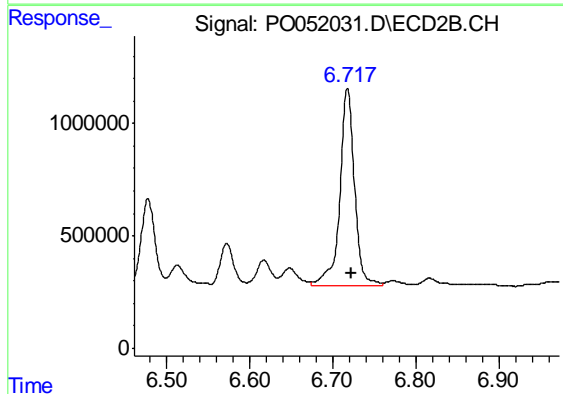
R.T.: 6.231 min  
Delta R.T.: -0.004 min  
Response: 5078265  
Conc: 110.89 ng/ml



#37 AR-1262-2

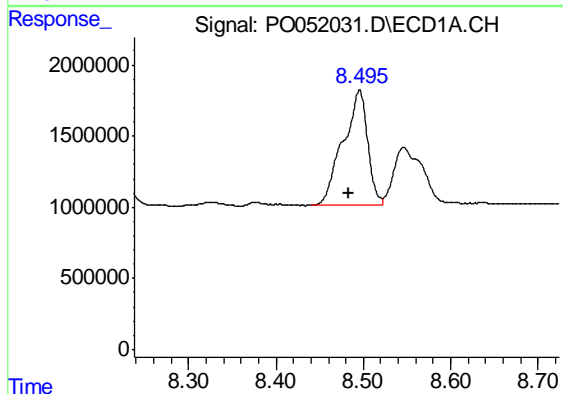
R.T.: 8.181 min  
Delta R.T.: -0.007 min  
Response: 25367126  
Conc: 129.12 ng/ml

Instrument :  
ECD\_O  
ClientSampleId :  
RCA-07MSD



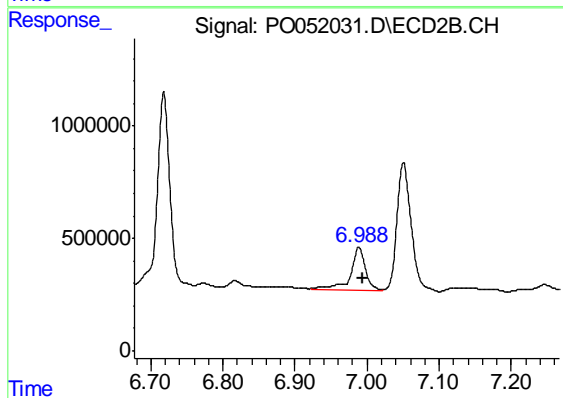
#37 AR-1262-2

R.T.: 6.718 min  
Delta R.T.: -0.004 min  
Response: 10765140  
Conc: 129.80 ng/ml



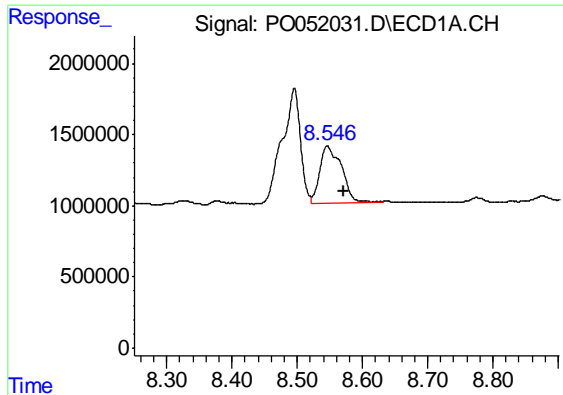
#38 AR-1262-3

R.T.: 8.496 min  
Delta R.T.: 0.013 min  
Response: 15760013  
Conc: 122.21 ng/ml



#38 AR-1262-3

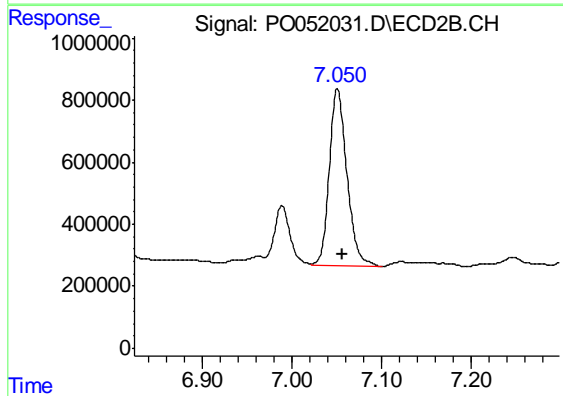
R.T.: 6.989 min  
Delta R.T.: -0.005 min  
Response: 2664037  
Conc: 80.19 ng/ml



#39 AR-1262-4

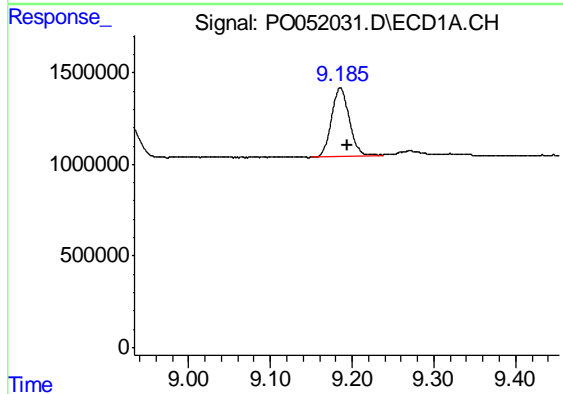
R.T.: 8.546 min  
Delta R.T.: -0.024 min  
Response: 9063920  
Conc: 157.34 ng/ml

Instrument :  
ECD\_O  
ClientSampleId :  
RCA-07MSD



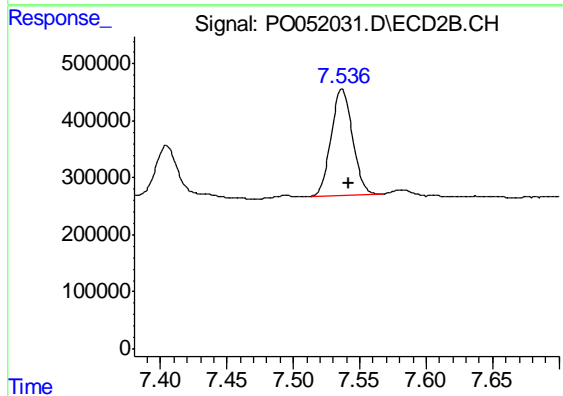
#39 AR-1262-4

R.T.: 7.051 min  
Delta R.T.: -0.006 min  
Response: 7784277  
Conc: 127.24 ng/ml



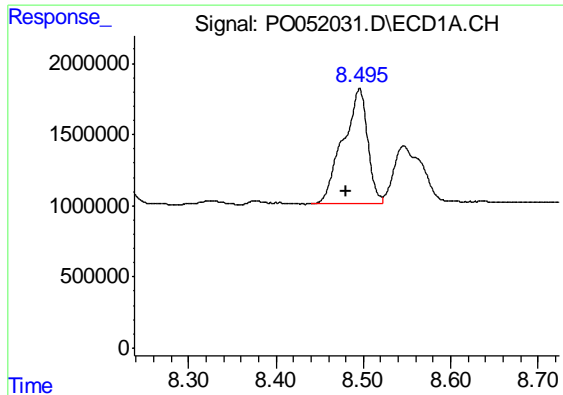
#40 AR-1262-5

R.T.: 9.186 min  
Delta R.T.: -0.009 min  
Response: 5650197  
Conc: 85.20 ng/ml



#40 AR-1262-5

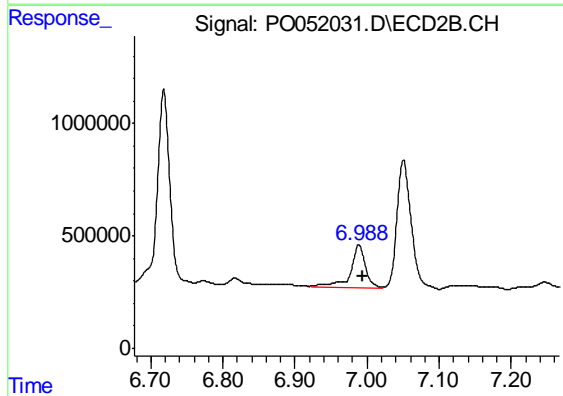
R.T.: 7.537 min  
Delta R.T.: -0.005 min  
Response: 2091991  
Conc: 75.86 ng/ml



#41 AR-1268-1

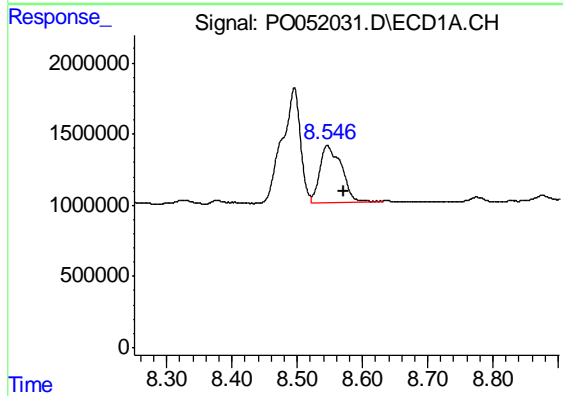
R.T.: 8.496 min  
Delta R.T.: 0.015 min  
Response: 15760013  
Conc: 54.36 ng/ml

Instrument :  
ECD\_O  
ClientSampleId :  
RCA-07MSD



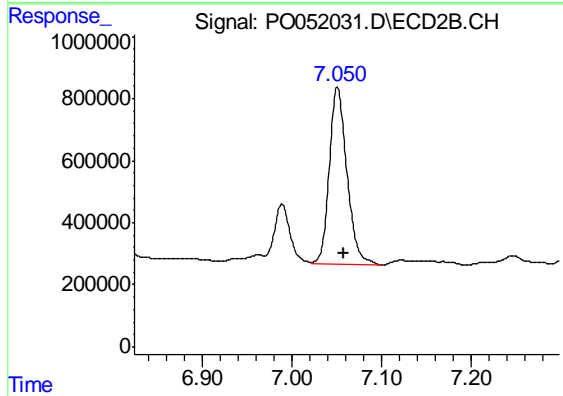
#41 AR-1268-1

R.T.: 6.989 min  
Delta R.T.: -0.005 min  
Response: 2664037  
Conc: 23.20 ng/ml



#42 AR-1268-2

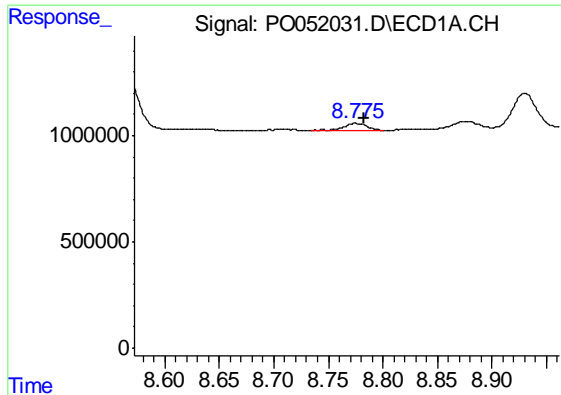
R.T.: 8.546 min  
Delta R.T.: -0.025 min  
Response: 9063920  
Conc: 35.69 ng/ml



#42 AR-1268-2

R.T.: 7.051 min  
Delta R.T.: -0.007 min  
Response: 7784277  
Conc: 71.33 ng/ml

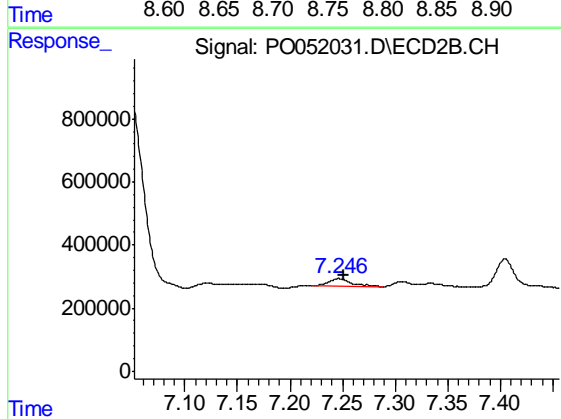




#43 AR-1268-3

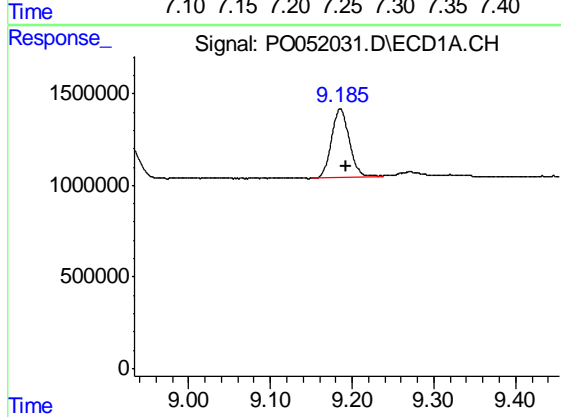
R.T.: 8.775 min  
 Delta R.T.: -0.008 min  
 Response: 463742  
 Conc: 2.01 ng/ml

Instrument :  
 ECD\_O  
 ClientSampleId :  
 RCA-07MSD



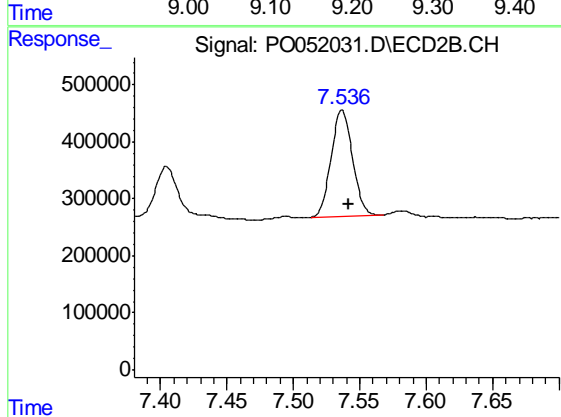
#43 AR-1268-3

R.T.: 7.246 min  
 Delta R.T.: -0.005 min  
 Response: 339039  
 Conc: 3.50 ng/ml



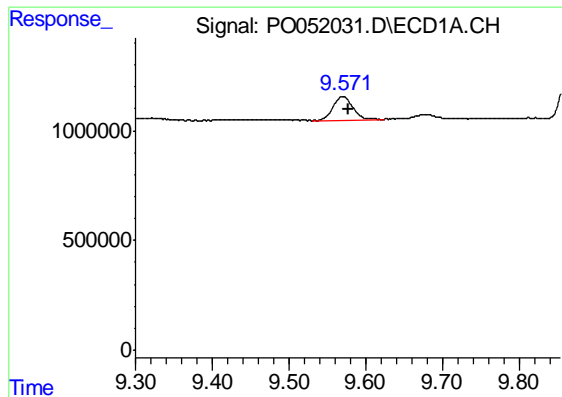
#44 AR-1268-4

R.T.: 9.186 min  
 Delta R.T.: -0.008 min  
 Response: 5650197  
 Conc: 66.42 ng/ml



#44 AR-1268-4

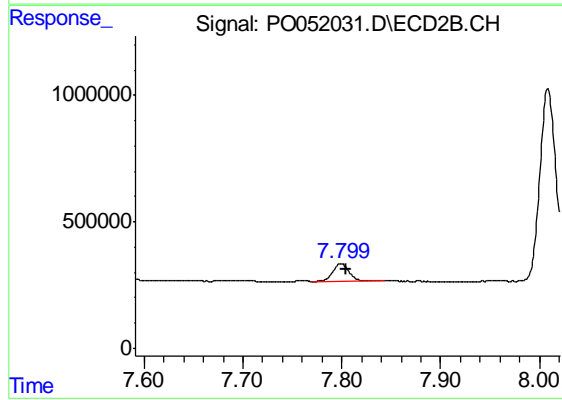
R.T.: 7.537 min  
 Delta R.T.: -0.005 min  
 Response: 2091991  
 Conc: 60.95 ng/ml



#45 AR-1268-5

R.T.: 9.570 min  
Delta R.T.: -0.008 min  
Response: 1934580  
Conc: 2.78 ng/ml

Instrument :  
ECD\_O  
ClientSampleId :  
RCA-07MSD



#45 AR-1268-5

R.T.: 7.799 min  
Delta R.T.: -0.005 min  
Response: 791962  
Conc: 2.80 ng/ml