

Data Path : Z:\pestpcbsrv\HPCHEM1\ECD_0\Data\PO113018\
 Data File : P0052038.D
 Signal(s) : Signal #1: ECD1A.CH Signal #2: ECD2B.CH
 Acq On : 30 Nov 2018 15:18
 Operator : SM/SJ
 Sample : J5993-11
 Misc :
 ALS Vial : 14 Sample Multiplier: 1

Instrument :
 ECD_0
 ClientSampleId :
 SPLP-LEACHATE-AMENDED-WCC-

Integration File signal 1: autoint1.e
 Integration File signal 2: autoint2.e
 Quant Time: Nov 30 22:12:12 2018
 Quant Method : Z:\pestpcbsrv\HPCHEM1\ECD_0\methods\PO112918.M
 Quant Title : GC EXTRACTABLES
 QLast Update : Fri Nov 30 03:43:16 2018
 Response via : Initial Calibration
 Integrator: ChemStation 6890 Scale Mode: Small noise peaks clipped

Volume Inj. : 2 µl
 Signal #1 Phase : ZB-MR1 Signal #2 Phase: ZB-MR2
 Signal #1 Info : 30Mx0.32mmx 0.50µ Signal #2 Info : 30M x 0.32mm x 0.25µm

Compound	RT#1	RT#2	Resp#1	Resp#2	ng/ml	ng/ml

System Monitoring Compounds						
1) SA Tetrachlo...	4.279	3.284	43918207	13154759	17.794	14.695
2) SA Decachlor...	9.879	8.008	27564595	10810328	16.934	15.774
Target Compounds						
3) L1 AR-1016-1	0.000	4.341	0	429052	N.D.	21.982 #
4) L1 AR-1016-2	0.000	4.341	0	429052	N.D.	9.739 #
5) L1 AR-1016-3	0.000	4.508	0	410290	N.D.	22.306 #
6) L1 AR-1016-4	0.000	4.508	0	410290	N.D.	27.538 #
7) L1 AR-1016-5	5.913	4.737	483508	137208	13.283	7.598 #
9) L2 AR-1221-2	4.587	3.565	191574	146313	13.417	27.184 #
12) L3 AR-1232-2	5.247	4.341	346174	429052	20.691	24.851
13) L3 AR-1232-3	0.000	4.508	0	410290	N.D.	57.378 #
14) L3 AR-1232-4	0.000	4.563	0	262850	N.D.	43.934 #
15) L3 AR-1232-5	0.000	4.737	0	137208	N.D.	20.424 #
16) L4 AR-1242-1	0.000	4.341	0	429052	N.D.	29.173 #
17) L4 AR-1242-2	0.000	4.341	0	429052	N.D.	13.202 #
18) L4 AR-1242-3	0.000	4.508	0	410290	N.D.	29.999 #
19) L4 AR-1242-4	0.000	4.563	0	262850	N.D.	20.820 #
20) L4 AR-1242-5	0.000	5.069	0	1079292	N.D.	65.901 #
21) L5 AR-1248-1	0.000	4.341	0	429052	N.D.	35.496 #
22) L5 AR-1248-2	0.000	4.508	0	410290	N.D.	23.012 #
23) L5 AR-1248-3	5.913	4.563	483508	262850	10.781	14.687 #
24) L5 AR-1248-4	0.000	4.737	0	137208	N.D.	6.330 #
25) L5 AR-1248-5	0.000	5.069	0	1079292	N.D.	50.325 #
26) L6 AR-1254-1	0.000	5.069	0	1079292	N.D.	30.100 #
27) L6 AR-1254-2	0.000	5.194	0	126827	N.D.	4.110 #
28) L6 AR-1254-3	6.893	0.000	2441016	0	26.889	N.D. #
29) L6 AR-1254-4	0.000	5.868	0	1063876	N.D.	34.571 #
31) L7 AR-1260-1	0.000	5.712	0	43015	N.D.	1.226 #
32) L7 AR-1260-2	7.268	5.868	9771285	1063876	105.024	24.467 #
33) L7 AR-1260-3	0.000	6.050	0	4360121	N.D.	108.459 #

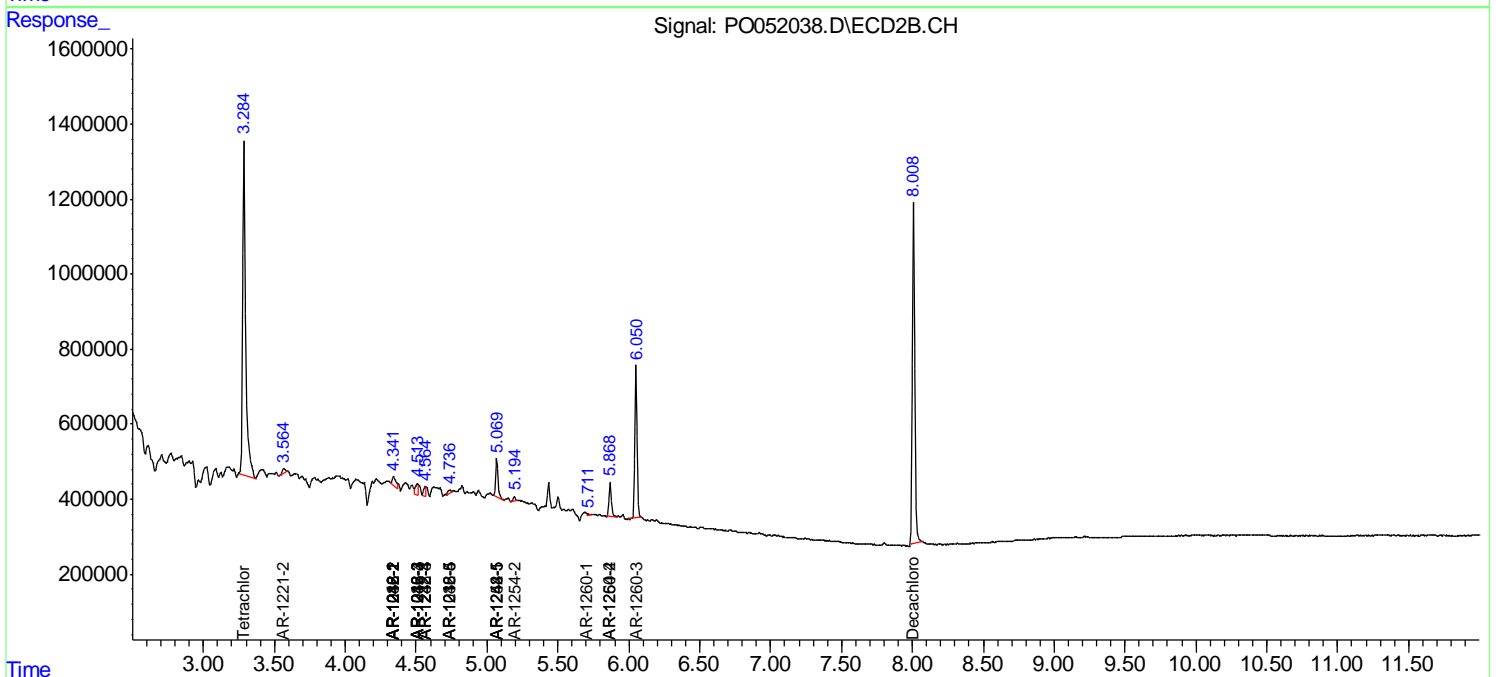
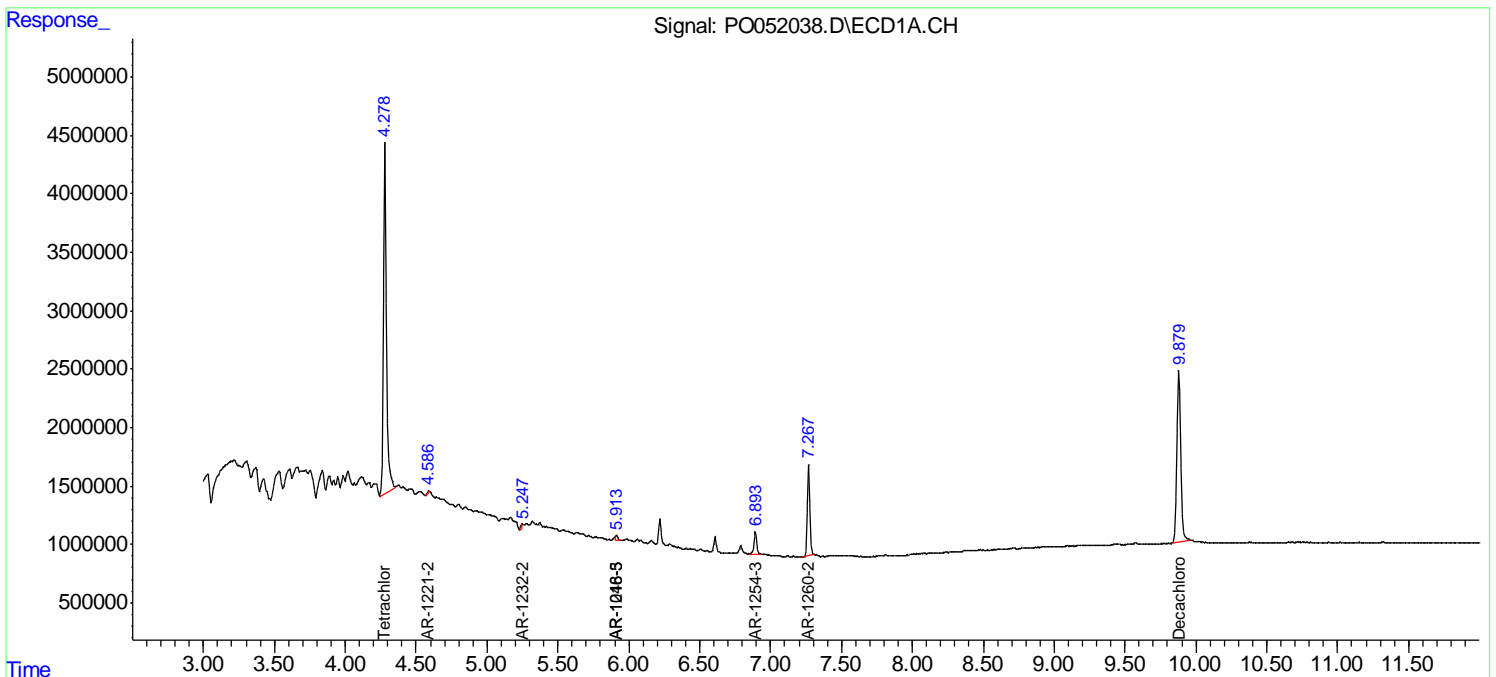
(f)=RT Delta > 1/2 Window (#)=Amounts differ by > 25% (m)=manual int.

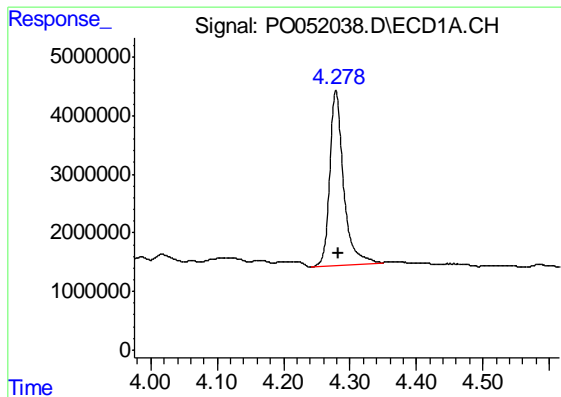
Data Path : Z:\pestpcbsrv\HPCHEM1\ECD_O\Data\PO113018\
 Data File : PO052038.D
 Signal(s) : Signal #1: ECD1A.CH Signal #2: ECD2B.CH
 Acq On : 30 Nov 2018 15:18
 Operator : SM/SJ
 Sample : J5993-11
 Misc :
 ALS Vial : 14 Sample Multiplier: 1

Instrument :
 ECD_O
ClientSampleId :
 SPLP-LEACHATE-AMENDED-WCC-

Integration File signal 1: autoint1.e
 Integration File signal 2: autoint2.e
 Quant Time: Nov 30 22:12:12 2018
 Quant Method : Z:\pestpcbsrv\HPCHEM1\ECD_O\methods\PO112918.M
 Quant Title : GC EXTRACTABLES
 QLast Update : Fri Nov 30 03:43:16 2018
 Response via : Initial Calibration
 Integrator: ChemStation 6890 Scale Mode: Small noise peaks clipped

Volume Inj. : 2 µl
 Signal #1 Phase : ZB-MR1 Signal #2 Phase: ZB-MR2
 Signal #1 Info : 30Mx0.32mmx 0.50µ Signal #2 Info : 30M x 0.32mm x 0.25µm

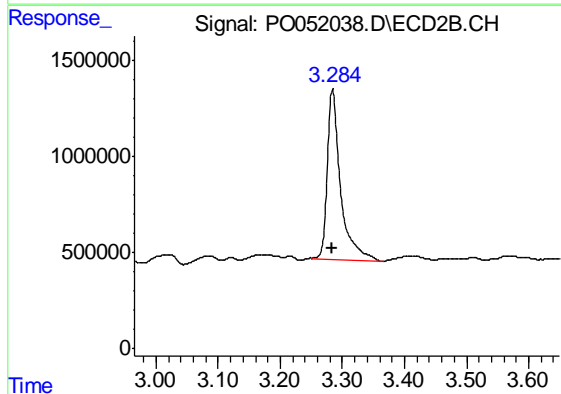




#1 Tetrachloro-m-xylene

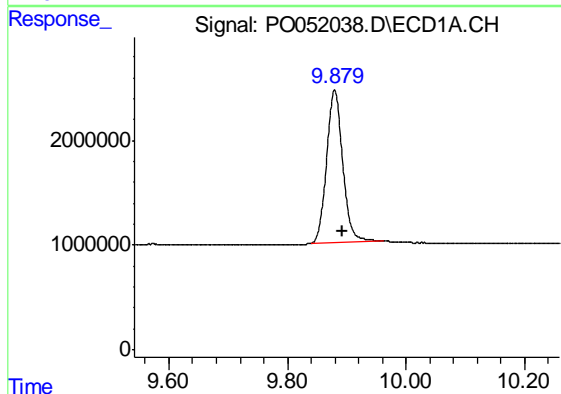
R.T.: 4.279 min
 Delta R.T.: -0.003 min
 Response: 43918207
 Conc: 17.79 ng/ml

Instrument :
 ECD_O
 ClientSampleId :
 SPLP-LEACHATE-AMENDED-WCC-



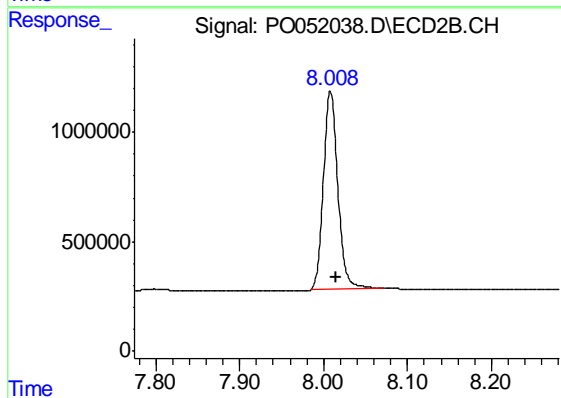
#1 Tetrachloro-m-xylene

R.T.: 3.284 min
 Delta R.T.: 0.001 min
 Response: 13154759
 Conc: 14.69 ng/ml



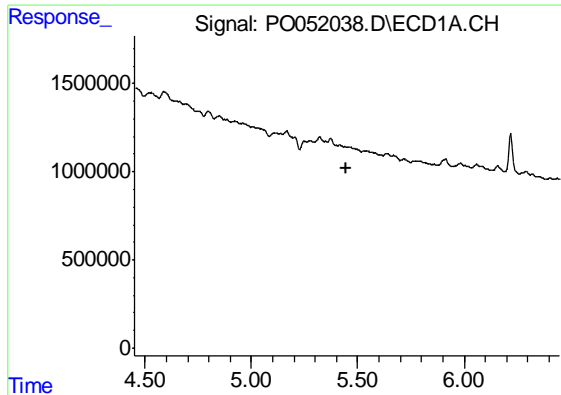
#2 Decachlorobiphenyl

R.T.: 9.879 min
 Delta R.T.: -0.013 min
 Response: 27564595
 Conc: 16.93 ng/ml



#2 Decachlorobiphenyl

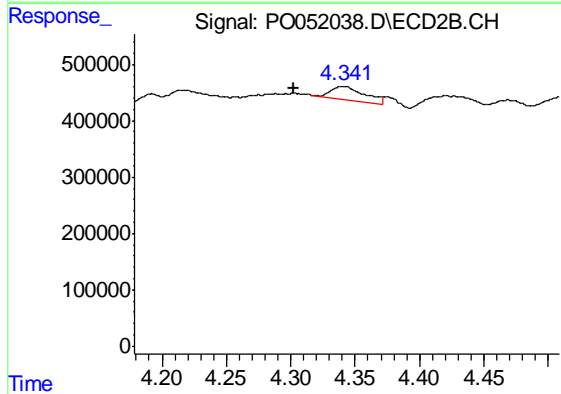
R.T.: 8.008 min
 Delta R.T.: -0.007 min
 Response: 10810328
 Conc: 15.77 ng/ml



#3 AR-1016-1

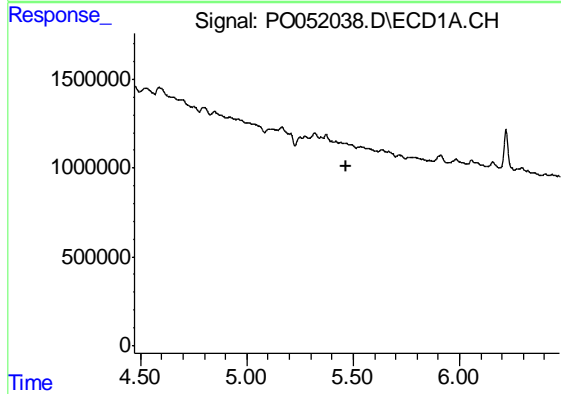
R.T.: 0.000 min
 Exp R.T. : 5.449 min
 Response: 0
 Conc: N.D.

Instrument :
 ECD_O
 ClientSampleId :
 SPLP-LEACHATE-AMENDED-WCC-



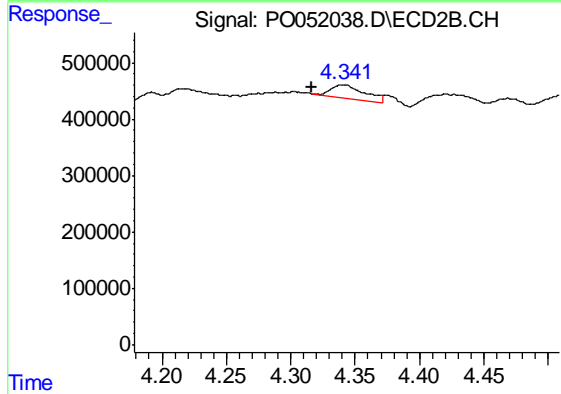
#3 AR-1016-1

R.T.: 4.341 min
 Delta R.T.: 0.038 min
 Response: 429052
 Conc: 21.98 ng/ml



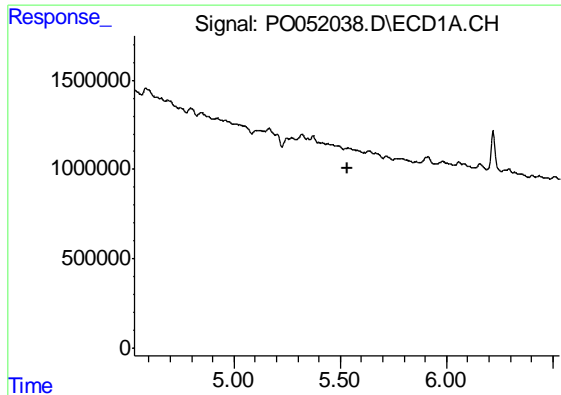
#4 AR-1016-2

R.T.: 0.000 min
 Exp R.T. : 5.470 min
 Response: 0
 Conc: N.D.



#4 AR-1016-2

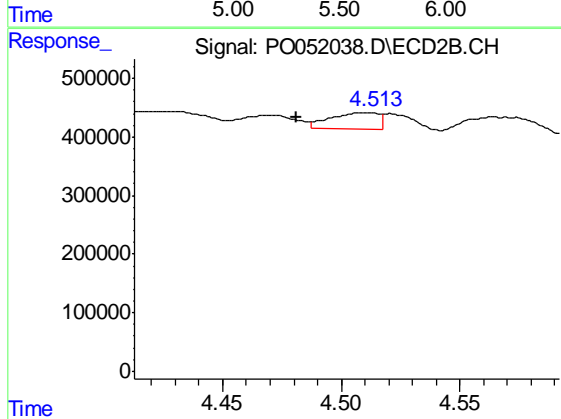
R.T.: 4.341 min
 Delta R.T.: 0.024 min
 Response: 429052
 Conc: 9.74 ng/ml



#5 AR-1016-3

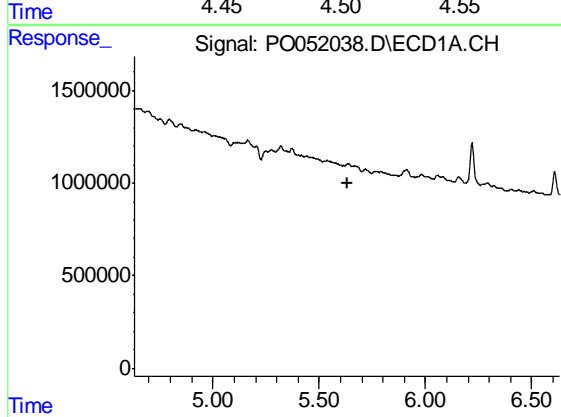
R.T.: 0.000 min
 Exp R.T. : 5.532 min
 Response: 0
 Conc: N.D.

Instrument :
 ECD_O
 ClientSampleId :
 SPLP-LEACHATE-AMENDED-WCC-



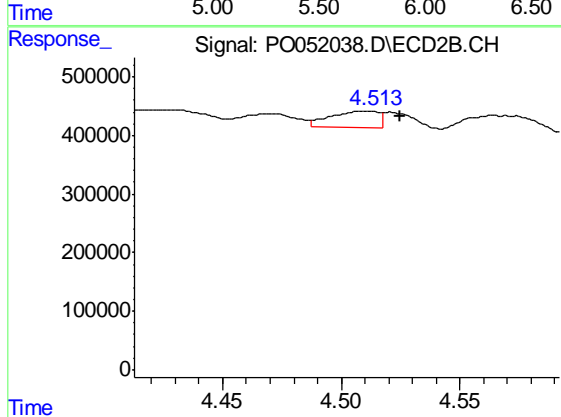
#5 AR-1016-3

R.T.: 4.508 min
 Delta R.T.: 0.026 min
 Response: 410290
 Conc: 22.31 ng/ml



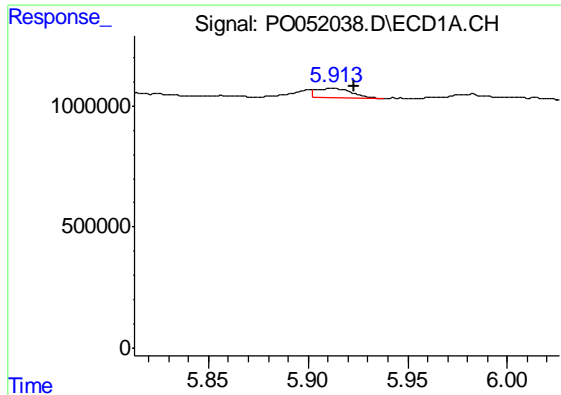
#6 AR-1016-4

R.T.: 0.000 min
 Exp R.T. : 5.631 min
 Response: 0
 Conc: N.D.



#6 AR-1016-4

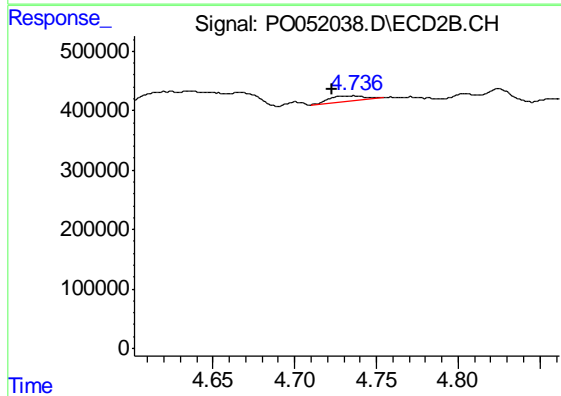
R.T.: 4.508 min
 Delta R.T.: -0.017 min
 Response: 410290
 Conc: 27.54 ng/ml



#7 AR-1016-5

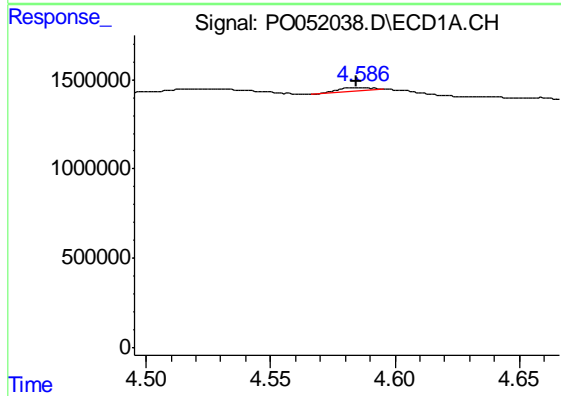
R.T.: 5.913 min
 Delta R.T.: -0.010 min
 Response: 483508
 Conc: 13.28 ng/ml

Instrument :
 ECD_O
 ClientSampleId :
 SPLP-LEACHATE-AMENDED-WCC-



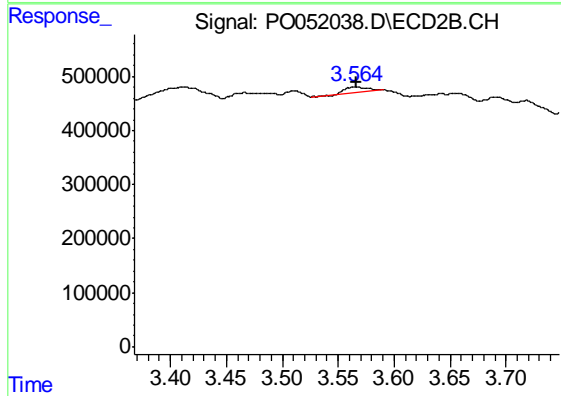
#7 AR-1016-5

R.T.: 4.737 min
 Delta R.T.: 0.014 min
 Response: 137208
 Conc: 7.60 ng/ml



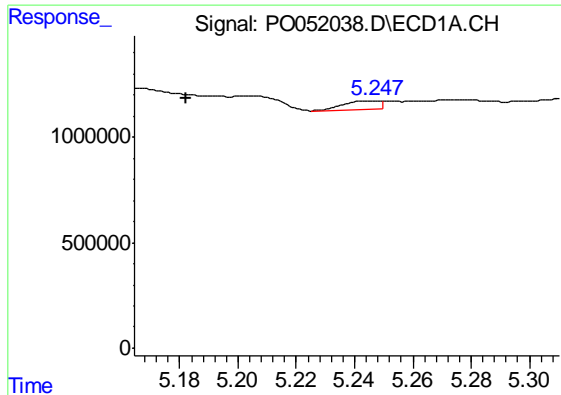
#9 AR-1221-2

R.T.: 4.587 min
 Delta R.T.: 0.002 min
 Response: 191574
 Conc: 13.42 ng/ml



#9 AR-1221-2

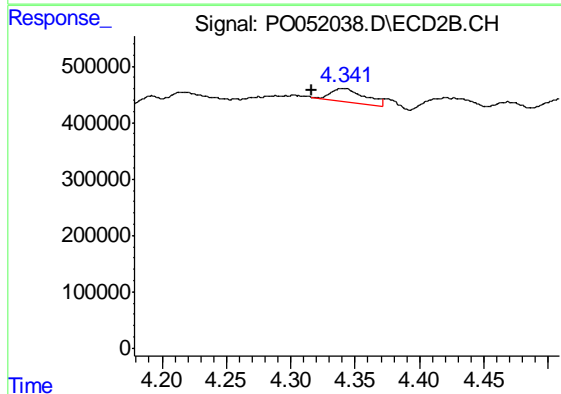
R.T.: 3.565 min
 Delta R.T.: -0.002 min
 Response: 146313
 Conc: 27.18 ng/ml



#12 AR-1232-2

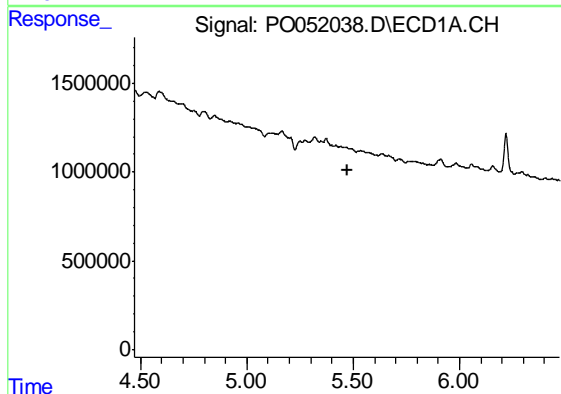
R.T.: 5.247 min
 Delta R.T.: 0.064 min
 Response: 346174
 Conc: 20.69 ng/ml

Instrument :
 ECD_O
 ClientSampleId :
 SPLP-LEACHATE-AMENDED-WCC-



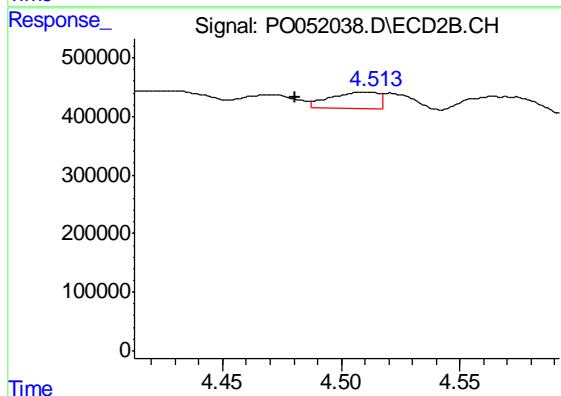
#12 AR-1232-2

R.T.: 4.341 min
 Delta R.T.: 0.024 min
 Response: 429052
 Conc: 24.85 ng/ml



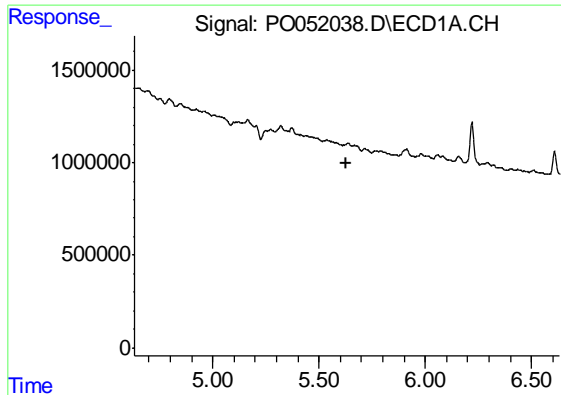
#13 AR-1232-3

R.T.: 0.000 min
 Exp R.T. : 5.471 min
 Response: 0
 Conc: N.D.



#13 AR-1232-3

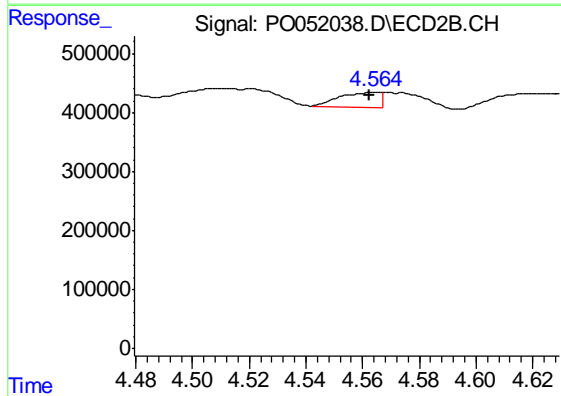
R.T.: 4.508 min
 Delta R.T.: 0.027 min
 Response: 410290
 Conc: 57.38 ng/ml



#14 AR-1232-4

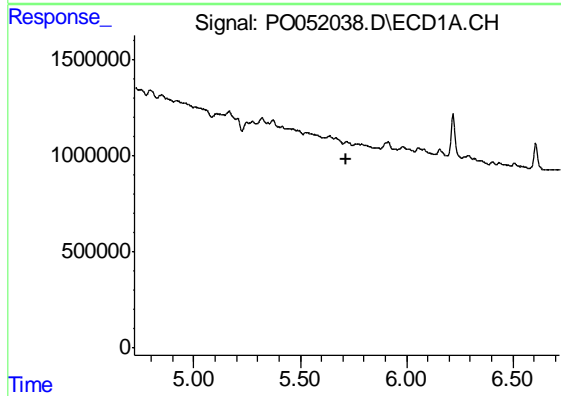
R.T.: 0.000 min
 Exp R.T. : 5.631 min
 Response: 0
 Conc: N.D.

Instrument :
 ECD_O
 ClientSampleId :
 SPLP-LEACHATE-AMENDED-WCC-



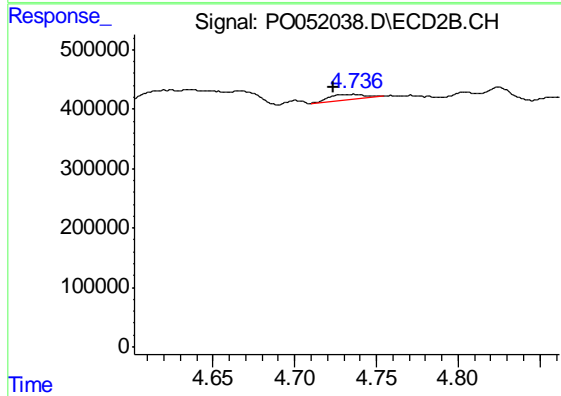
#14 AR-1232-4

R.T.: 4.563 min
 Delta R.T.: 0.001 min
 Response: 262850
 Conc: 43.93 ng/ml



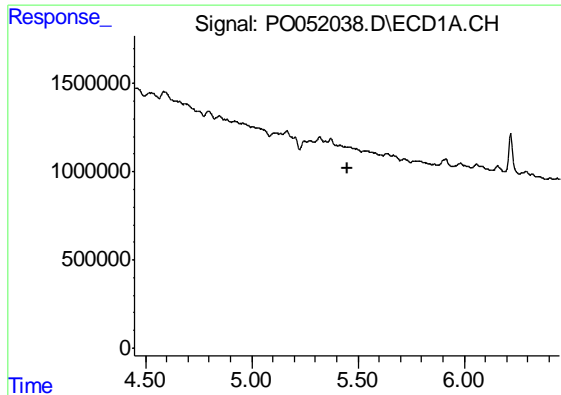
#15 AR-1232-5

R.T.: 0.000 min
 Exp R.T. : 5.720 min
 Response: 0
 Conc: N.D.



#15 AR-1232-5

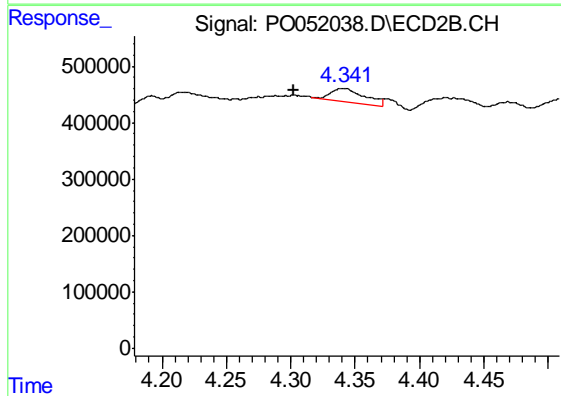
R.T.: 4.737 min
 Delta R.T.: 0.013 min
 Response: 137208
 Conc: 20.42 ng/ml



#16 AR-1242-1

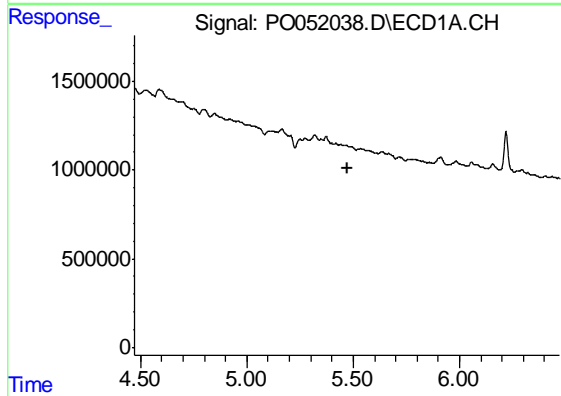
R.T.: 0.000 min
 Exp R.T. : 5.449 min
 Response: 0
 Conc: N.D.

Instrument :
 ECD_O
 ClientSampleId :
 SPLP-LEACHATE-AMENDED-WCC-



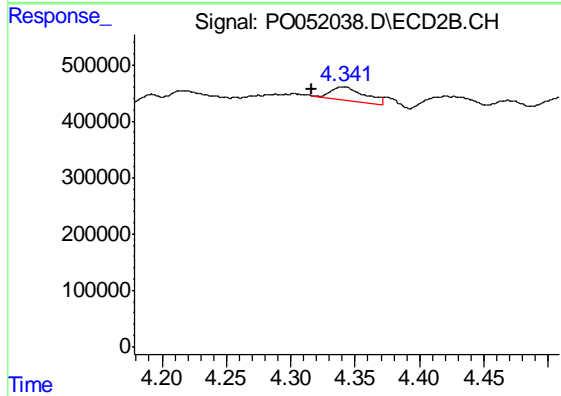
#16 AR-1242-1

R.T.: 4.341 min
 Delta R.T.: 0.038 min
 Response: 429052
 Conc: 29.17 ng/ml



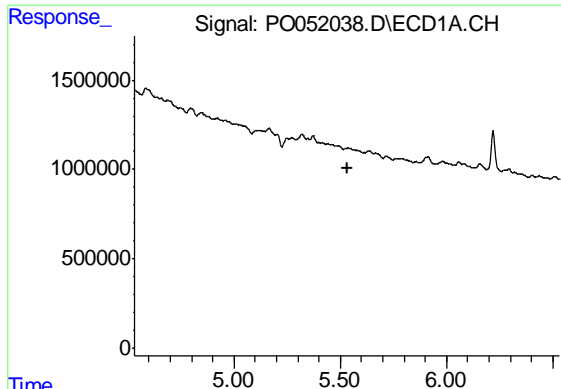
#17 AR-1242-2

R.T.: 0.000 min
 Exp R.T. : 5.471 min
 Response: 0
 Conc: N.D.



#17 AR-1242-2

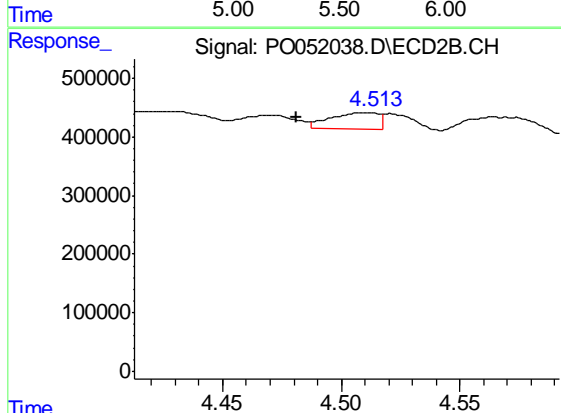
R.T.: 4.341 min
 Delta R.T.: 0.024 min
 Response: 429052
 Conc: 13.20 ng/ml



#18 AR-1242-3

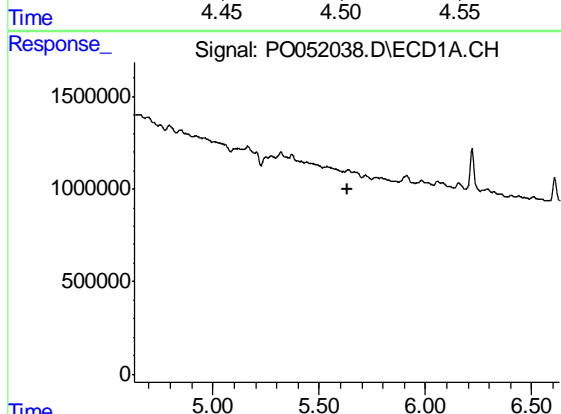
R.T.: 0.000 min
 Exp R.T. : 5.532 min
 Response: 0
 Conc: N.D.

Instrument :
 ECD_O
 ClientSampleId :
 SPLP-LEACHATE-AMENDED-WCC-



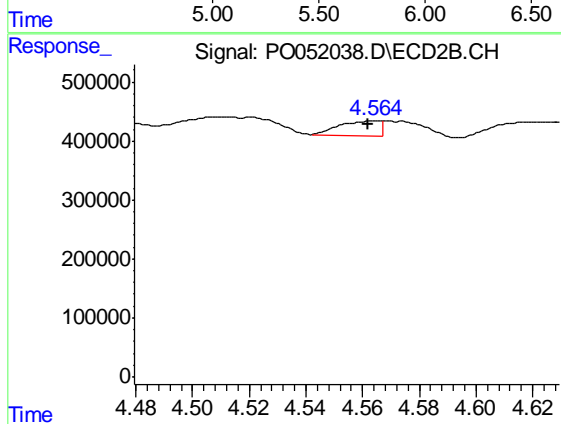
#18 AR-1242-3

R.T.: 4.508 min
 Delta R.T.: 0.027 min
 Response: 410290
 Conc: 30.00 ng/ml



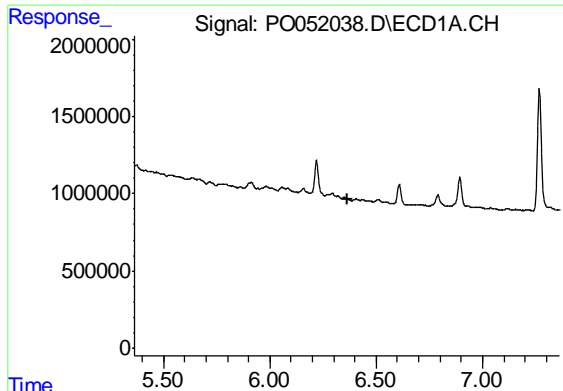
#19 AR-1242-4

R.T.: 0.000 min
 Exp R.T. : 5.631 min
 Response: 0
 Conc: N.D.



#19 AR-1242-4

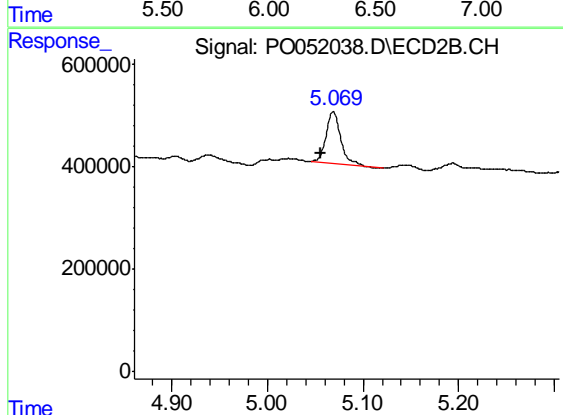
R.T.: 4.563 min
 Delta R.T.: 0.002 min
 Response: 262850
 Conc: 20.82 ng/ml



#20 AR-1242-5

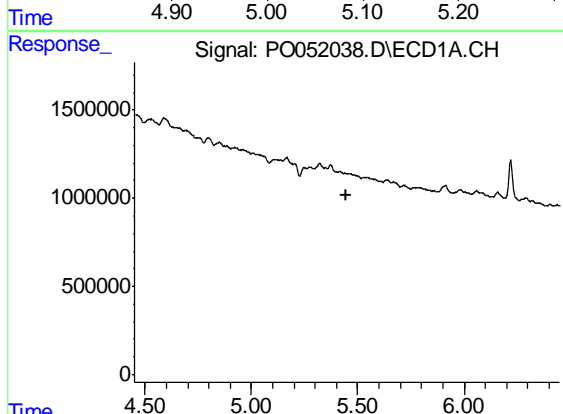
R.T.: 0.000 min
 Exp R.T. : 6.363 min
 Response: 0
 Conc: N.D.

Instrument :
 ECD_O
ClientSampled :
 SPLP-LEACHATE-AMENDED-WCC-



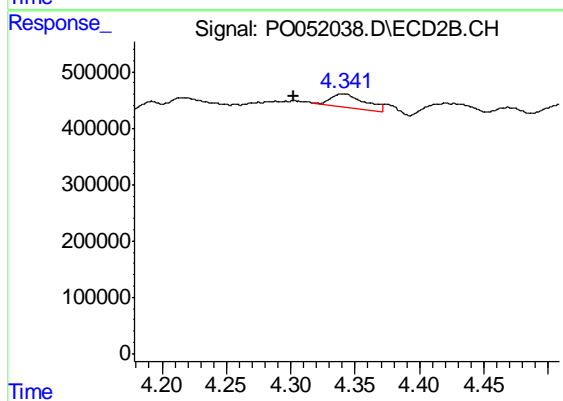
#20 AR-1242-5

R.T.: 5.069 min
 Delta R.T.: 0.013 min
 Response: 1079292
 Conc: 65.90 ng/ml



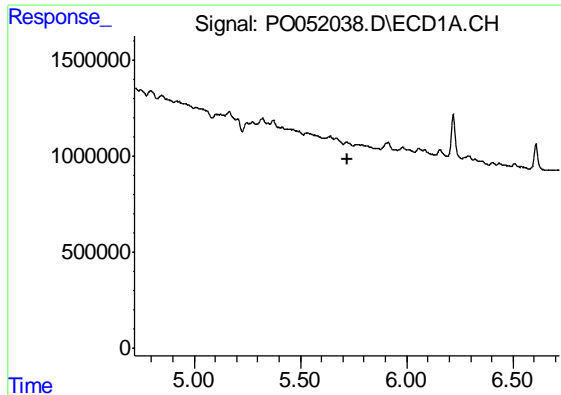
#21 AR-1248-1

R.T.: 0.000 min
 Exp R.T. : 5.449 min
 Response: 0
 Conc: N.D.



#21 AR-1248-1

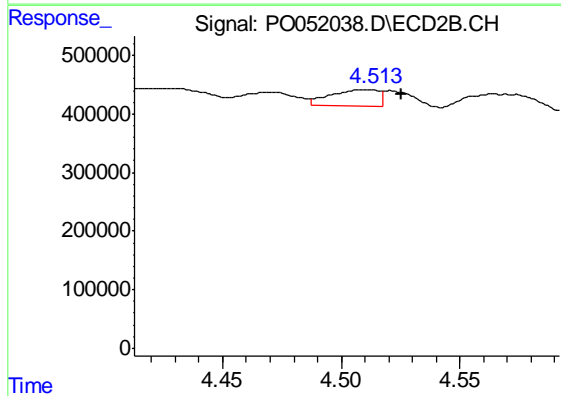
R.T.: 4.341 min
 Delta R.T.: 0.038 min
 Response: 429052
 Conc: 35.50 ng/ml



#22 AR-1248-2

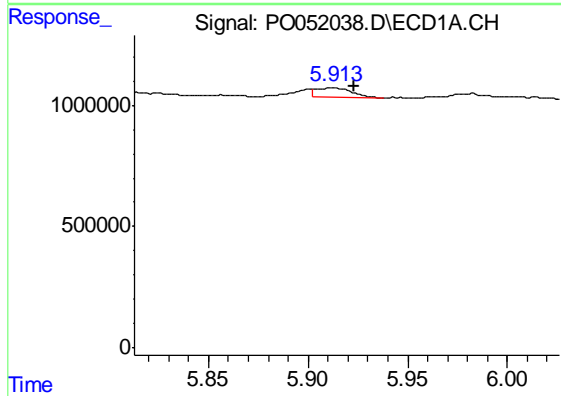
R.T.: 0.000 min
 Exp R.T.: 5.719 min
 Response: 0
 Conc: N.D.

Instrument :
 ECD_O
 ClientSampleId :
 SPLP-LEACHATE-AMENDED-WCC-



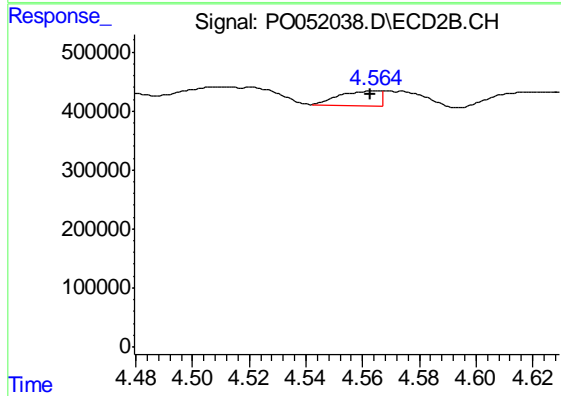
#22 AR-1248-2

R.T.: 4.508 min
 Delta R.T.: -0.018 min
 Response: 410290
 Conc: 23.01 ng/ml



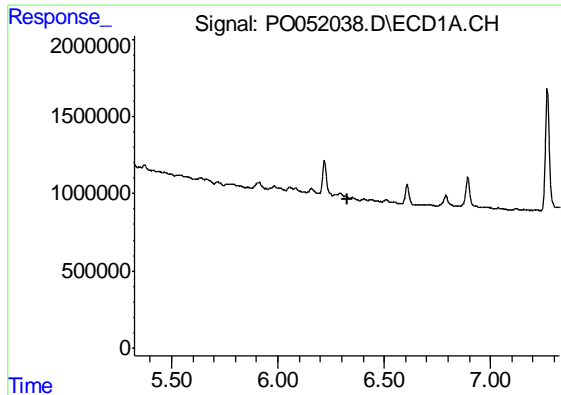
#23 AR-1248-3

R.T.: 5.913 min
 Delta R.T.: -0.010 min
 Response: 483508
 Conc: 10.78 ng/ml



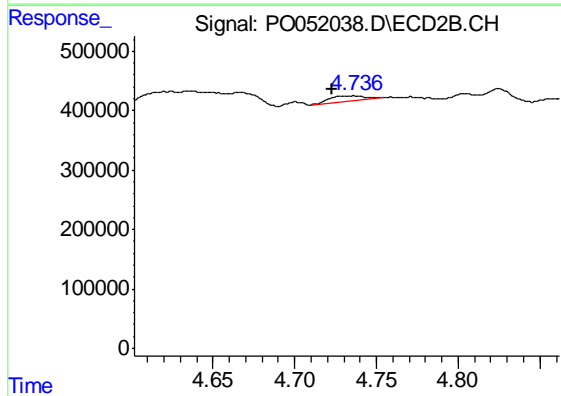
#23 AR-1248-3

R.T.: 4.563 min
 Delta R.T.: 0.000 min
 Response: 262850
 Conc: 14.69 ng/ml

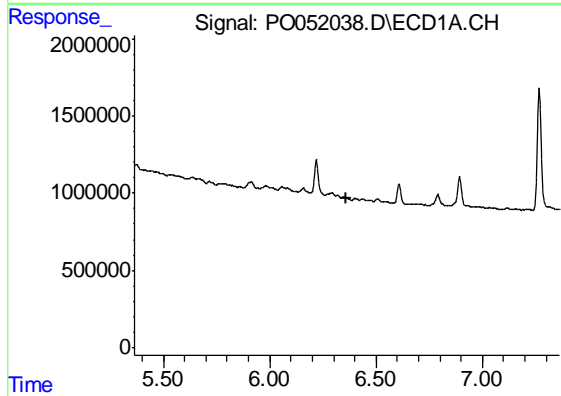


#24 AR-1248-4
 R.T.: 0.000 min
 Exp R.T. : 6.325 min
 Response: 0
 Conc: N.D.

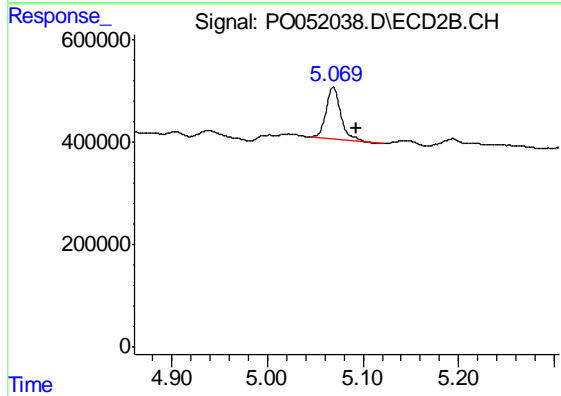
Instrument :
 ECD_O
ClientSampled :
 SPLP-LEACHATE-AMENDED-WCC-



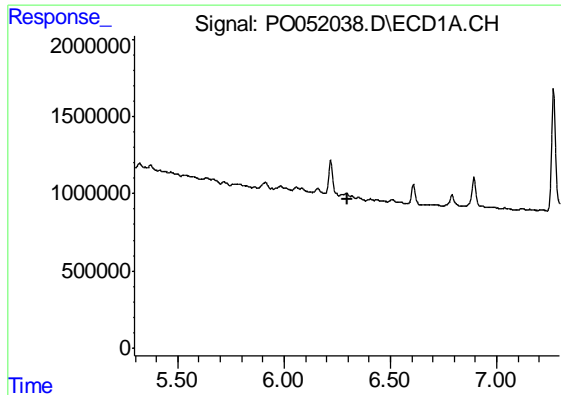
#24 AR-1248-4
 R.T.: 4.737 min
 Delta R.T.: 0.013 min
 Response: 137208
 Conc: 6.33 ng/ml



#25 AR-1248-5
 R.T.: 0.000 min
 Exp R.T. : 6.363 min
 Response: 0
 Conc: N.D.



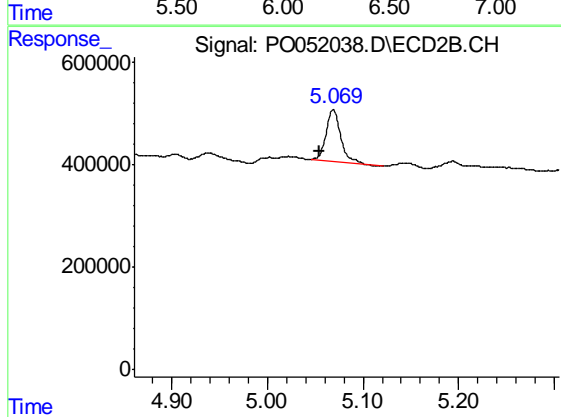
#25 AR-1248-5
 R.T.: 5.069 min
 Delta R.T.: -0.025 min
 Response: 1079292
 Conc: 50.32 ng/ml



#26 AR-1254-1

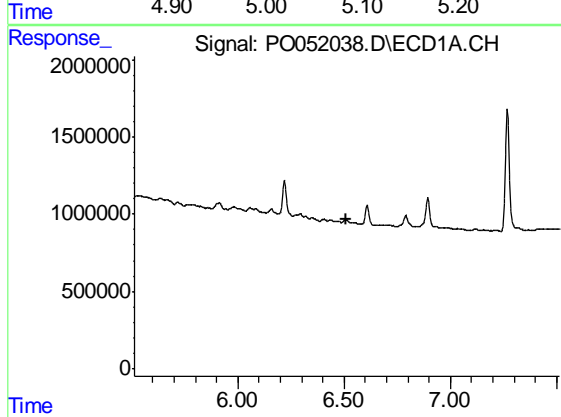
R.T.: 0.000 min
 Exp R.T. : 6.296 min
 Response: 0
 Conc: N.D.

Instrument :
 ECD_O
ClientSampled :
 SPLP-LEACHATE-AMENDED-WCC-



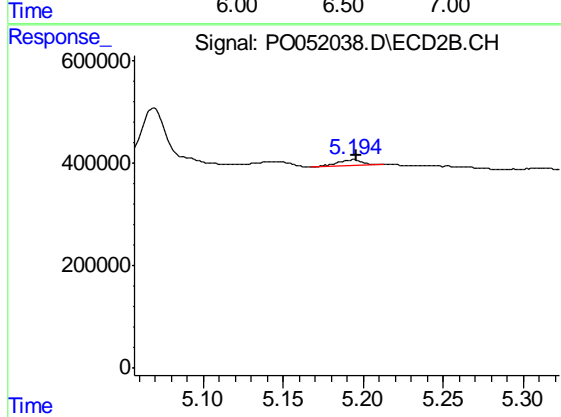
#26 AR-1254-1

R.T.: 5.069 min
 Delta R.T.: 0.015 min
 Response: 1079292
 Conc: 30.10 ng/ml



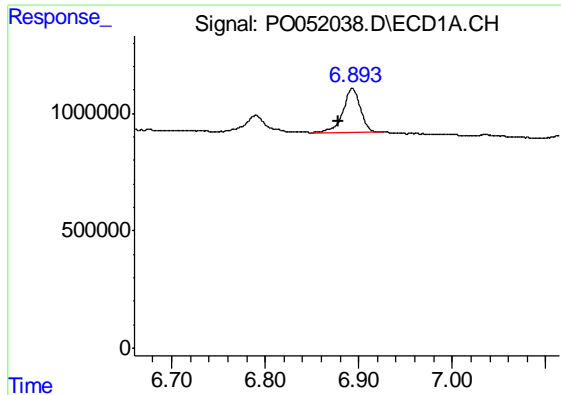
#27 AR-1254-2

R.T.: 0.000 min
 Exp R.T. : 6.513 min
 Response: 0
 Conc: N.D.



#27 AR-1254-2

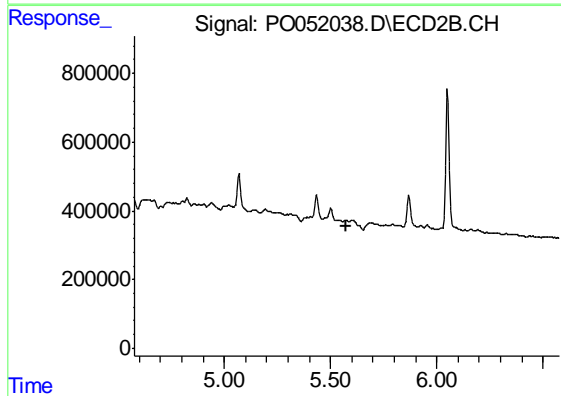
R.T.: 5.194 min
 Delta R.T.: -0.002 min
 Response: 126827
 Conc: 4.11 ng/ml



#28 AR-1254-3

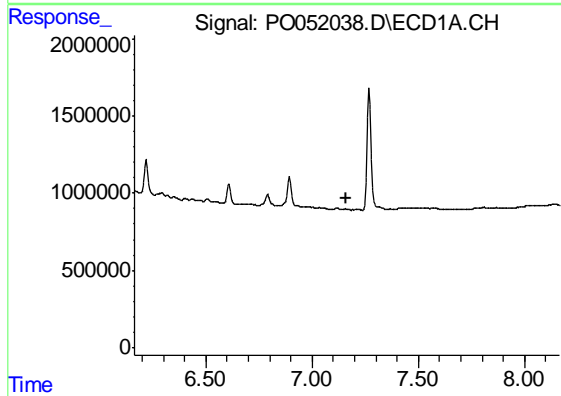
R.T.: 6.893 min
 Delta R.T.: 0.014 min
 Response: 2441016
 Conc: 26.89 ng/ml

Instrument :
 ECD_O
 ClientSampleId :
 SPLP-LEACHATE-AMENDED-WCC-



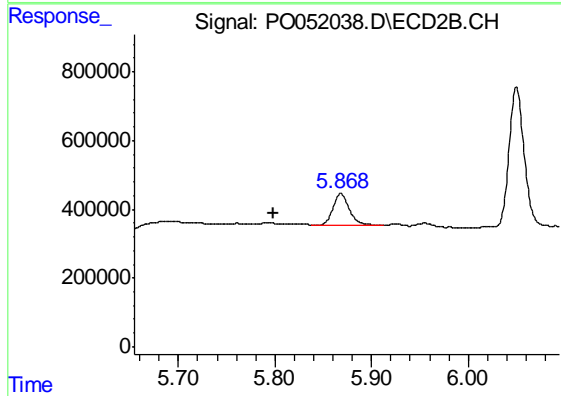
#28 AR-1254-3

R.T.: 0.000 min
 Exp R.T. : 5.577 min
 Response: 0
 Conc: N.D.



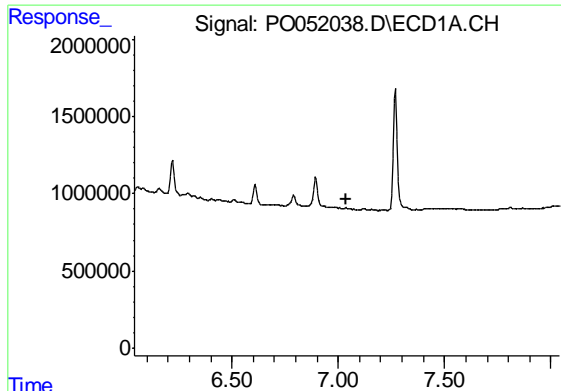
#29 AR-1254-4

R.T.: 0.000 min
 Exp R.T. : 7.164 min
 Response: 0
 Conc: N.D.



#29 AR-1254-4

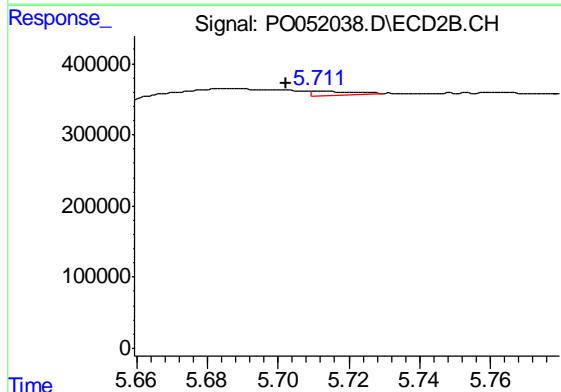
R.T.: 5.868 min
 Delta R.T.: 0.070 min
 Response: 1063876
 Conc: 34.57 ng/ml



#31 AR-1260-1

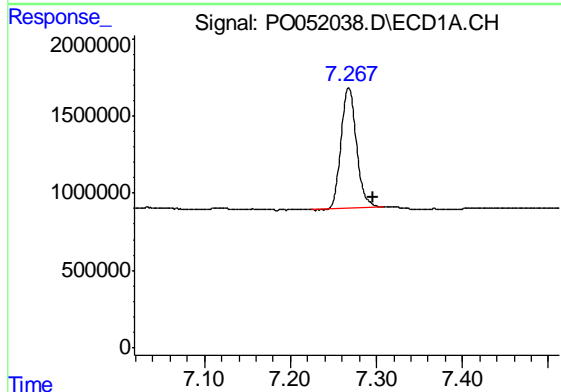
R.T.: 0.000 min
 Exp R.T. : 7.040 min
 Response: 0
 Conc: N.D.

Instrument :
 ECD_O
 ClientSampleId :
 SPLP-LEACHATE-AMENDED-WCC-



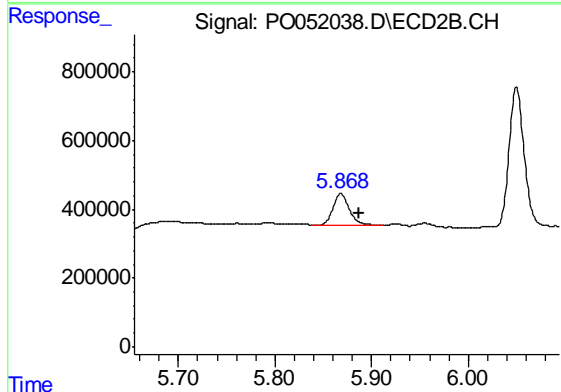
#31 AR-1260-1

R.T.: 5.712 min
 Delta R.T.: 0.010 min
 Response: 43015
 Conc: 1.23 ng/ml



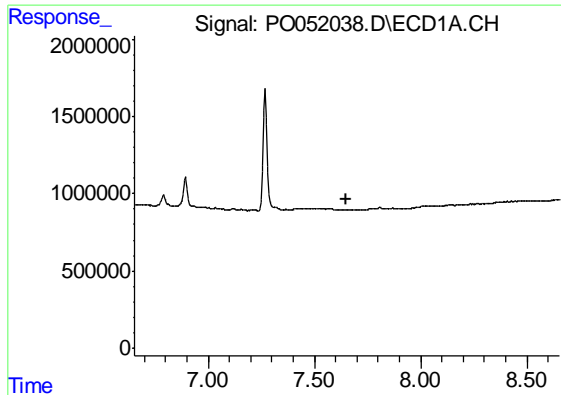
#32 AR-1260-2

R.T.: 7.268 min
 Delta R.T.: -0.029 min
 Response: 9771285
 Conc: 105.02 ng/ml



#32 AR-1260-2

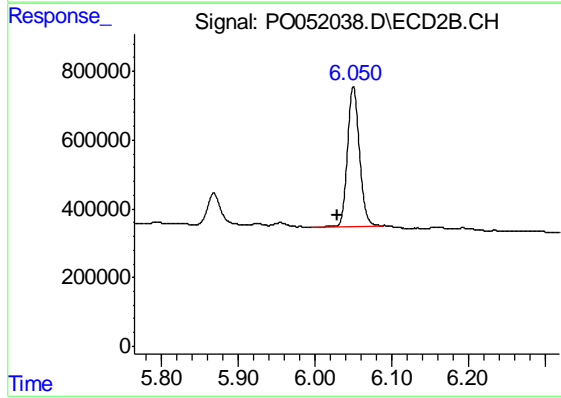
R.T.: 5.868 min
 Delta R.T.: -0.018 min
 Response: 1063876
 Conc: 24.47 ng/ml



#33 AR-1260-3

R.T.: 0.000 min
Exp R.T. : 7.653 min
Response: 0
Conc: N.D.

Instrument :
ECD_O
ClientSampleId :
SPLP-LEACHATE-AMENDED-WCC-



#33 AR-1260-3

R.T.: 6.050 min
Delta R.T.: 0.022 min
Response: 4360121
Conc: 108.46 ng/ml