

Data Path : Z:\pestpcbsrv\HPCHEM1\ECD\_0\Data\PO113018\  
 Data File : PO052068.D  
 Signal(s) : Signal #1: ECD1A.CH Signal #2: ECD2B.CH  
 Acq On : 01 Dec 2018 00:09  
 Operator : SM/SJ  
 Sample : J6128-05  
 Misc :  
 ALS Vial : 24 Sample Multiplier: 1

Instrument :  
 ECD\_O  
 ClientSampled :

Integration File signal 1: autoint1.e  
 Integration File signal 2: autoint2.e  
 Quant Time: Dec 01 03:16:07 2018  
 Quant Method : Z:\pestpcbsrv\HPCHEM1\ECD\_0\methods\PO112918.M  
 Quant Title : GC EXTRACTABLES  
 QLast Update : Fri Nov 30 03:43:16 2018  
 Response via : Initial Calibration  
 Integrator: ChemStation 6890 Scale Mode: Small noise peaks clipped

Volume Inj. : 2 µl  
 Signal #1 Phase : ZB-MR1 Signal #2 Phase: ZB-MR2  
 Signal #1 Info : 30Mx0.32mmx 0.50µ Signal #2 Info : 30M x 0.32mm x 0.25µm

Compound	RT#1	RT#2	Resp#1	Resp#2	ng/ml	ng/ml
System Monitoring Compounds						
1) SA Tetrachlo...	4.277	3.283	50851962	14287504	20.604	15.960
2) SA Decachlor...	9.876	8.008	23921908	9868683	14.696	14.400
Target Compounds						
3) L1 AR-1016-1	5.442	4.299	1562027	551709	28.016	28.266
4) L1 AR-1016-2	5.464	4.313	3426472	737562	40.354	16.742 #
5) L1 AR-1016-3	5.534	4.477	846898	512245	17.332	27.849 #
6) L1 AR-1016-4	5.623	4.553	346793	930331	8.701	62.442 #
7) L1 AR-1016-5	5.917	4.726	356199	333107	9.786	18.445 #
8) L2 AR-1221-1	4.442	0.000	496739	0	24.858	N.D. #
9) L2 AR-1221-2	4.563	3.564	2786516	158596	195.154	29.466 #
10) L2 AR-1221-3	4.666	3.634	2268849	380635	50.224	21.912 #
11) L3 AR-1232-1	4.666	3.634	2268849	380635	61.361	27.059 #
12) L3 AR-1232-2	5.170	4.313	1514589	737562	90.526	42.719 #
13) L3 AR-1232-3	5.464	4.477	3426472	512245	102.409	71.636 #
14) L3 AR-1232-4	5.623	4.553	346793	930331	22.097	155.502 #
15) L3 AR-1232-5	5.712	4.726	1157540	333107	108.312	49.584 #
16) L4 AR-1242-1	5.442	4.299	1562027	551709	36.967	37.513
17) L4 AR-1242-2	5.464	4.313	3426472	737562	53.252	22.694 #
18) L4 AR-1242-3	5.534	4.477	846898	512245	22.845	37.453 #
19) L4 AR-1242-4	5.623	4.553	346793	930331	11.363	73.692 #
20) L4 AR-1242-5	6.356	5.052	413451	254408	13.915	15.534
21) L5 AR-1248-1	5.442	4.299	1562027	551709	50.341	45.643
22) L5 AR-1248-2	5.712	4.553	1157540	930331	28.852	52.180 #
23) L5 AR-1248-3	5.917	4.553	356199	930331	7.942	51.983 #
24) L5 AR-1248-4	6.319	4.726	290122	333107	5.869	15.367 #
25) L5 AR-1248-5	6.356	5.087	413451	273338	8.813	12.745 #
26) L6 AR-1254-1	6.319	5.052	290122	254408	5.389	7.095 #
27) L6 AR-1254-2	6.521	5.231	1794384	101102	21.235	3.276 #
28) L6 AR-1254-3	6.891	5.575	3061200	952538	33.720	19.274 #
29) L6 AR-1254-4	7.125	5.863	142116	325291	2.027	10.570 #
31) L7 AR-1260-1	7.029	5.706	1250420	290990	17.749	8.297 #
32) L7 AR-1260-2	7.360	5.863	1211827	325291	13.025	7.481 #
33) L7 AR-1260-3	7.683	6.026	608427	268026	9.293	6.667 #
34) L7 AR-1260-4	0.000	6.525	0	241783	N.D.	8.738 #
35) L7 AR-1260-5	8.184	6.752	180095	384415	1.094	5.332 #
36) L8 AR-1262-1	7.683	0.000	608427	0	5.826	N.D. #
37) L8 AR-1262-2	8.184	6.752	180095	384415	0.917	4.635 #
38) L8 AR-1262-3	0.000	6.991	0	588543	N.D.	17.716 #
39) L8 AR-1262-4	0.000	7.025	0	1596950	N.D.	26.103 #
41) L9 AR-1268-1	0.000	6.991	0	588543	N.D.	5.125 #
42) L9 AR-1268-2	0.000	7.025	0	1596950	N.D.	14.634 #

Data Path : Z:\pestpcbsrv\HPCHEM1\ECD\_0\Data\PO113018\  
Data File : PO052068.D  
Signal(s) : Signal #1: ECD1A.CH Signal #2: ECD2B.CH  
Acq On : 01 Dec 2018 00:09  
Operator : SM/SJ  
Sample : J6128-05  
Misc :  
ALS Vial : 24 Sample Multiplier: 1

Instrument :  
ECD\_O  
ClientSampleId :

Integration File signal 1: autoint1.e  
Integration File signal 2: autoint2.e  
Quant Time: Dec 01 03:16:07 2018  
Quant Method : Z:\pestpcbsrv\HPCHEM1\ECD\_0\methods\PO112918.M  
Quant Title : GC EXTRACTABLES  
QLast Update : Fri Nov 30 03:43:16 2018  
Response via : Initial Calibration  
Integrator: ChemStation 6890 Scale Mode: Small noise peaks clipped

Volume Inj. : 2 µl  
Signal #1 Phase : ZB-MR1 Signal #2 Phase: ZB-MR2  
Signal #1 Info : 30Mx0.32mmx 0.50µ Signal #2 Info : 30M x 0.32mm x 0.25µm

Compound	RT#1	RT#2	Resp#1	Resp#2	ng/ml	ng/ml
----------	------	------	--------	--------	-------	-------

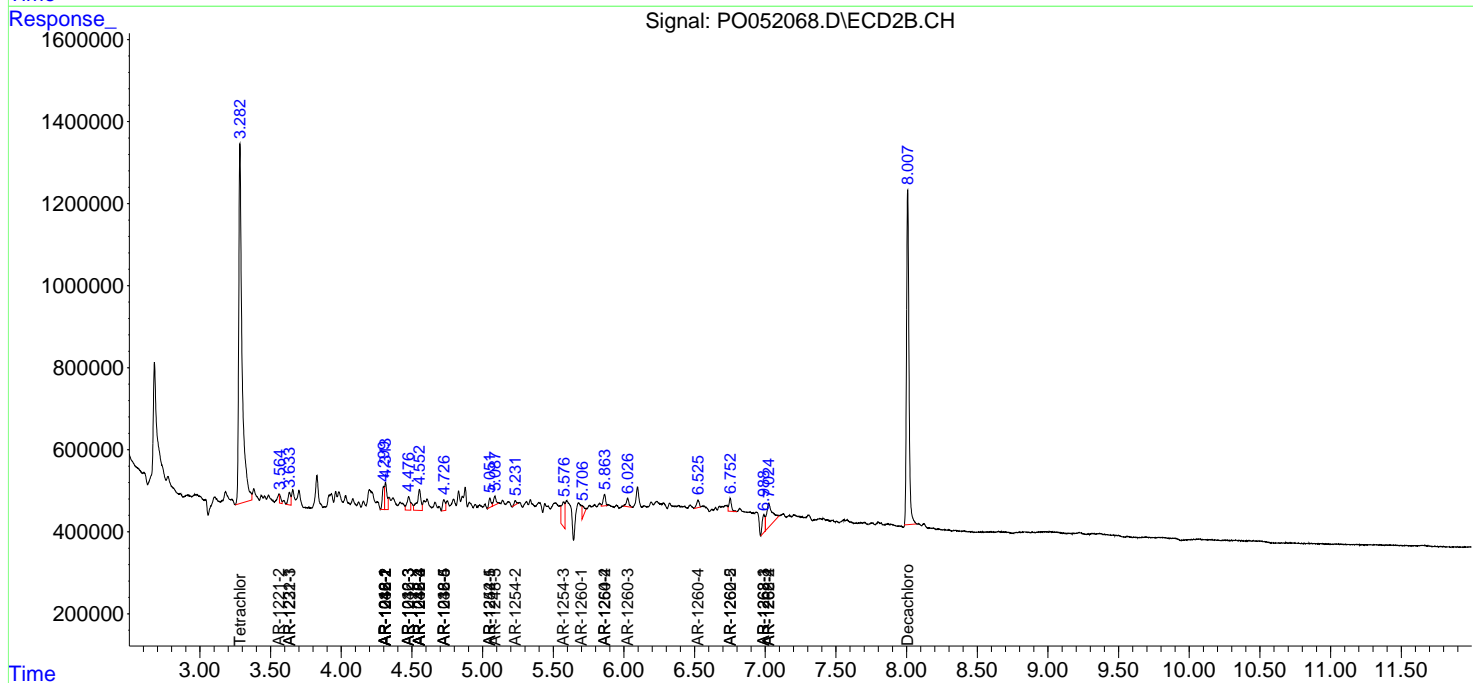
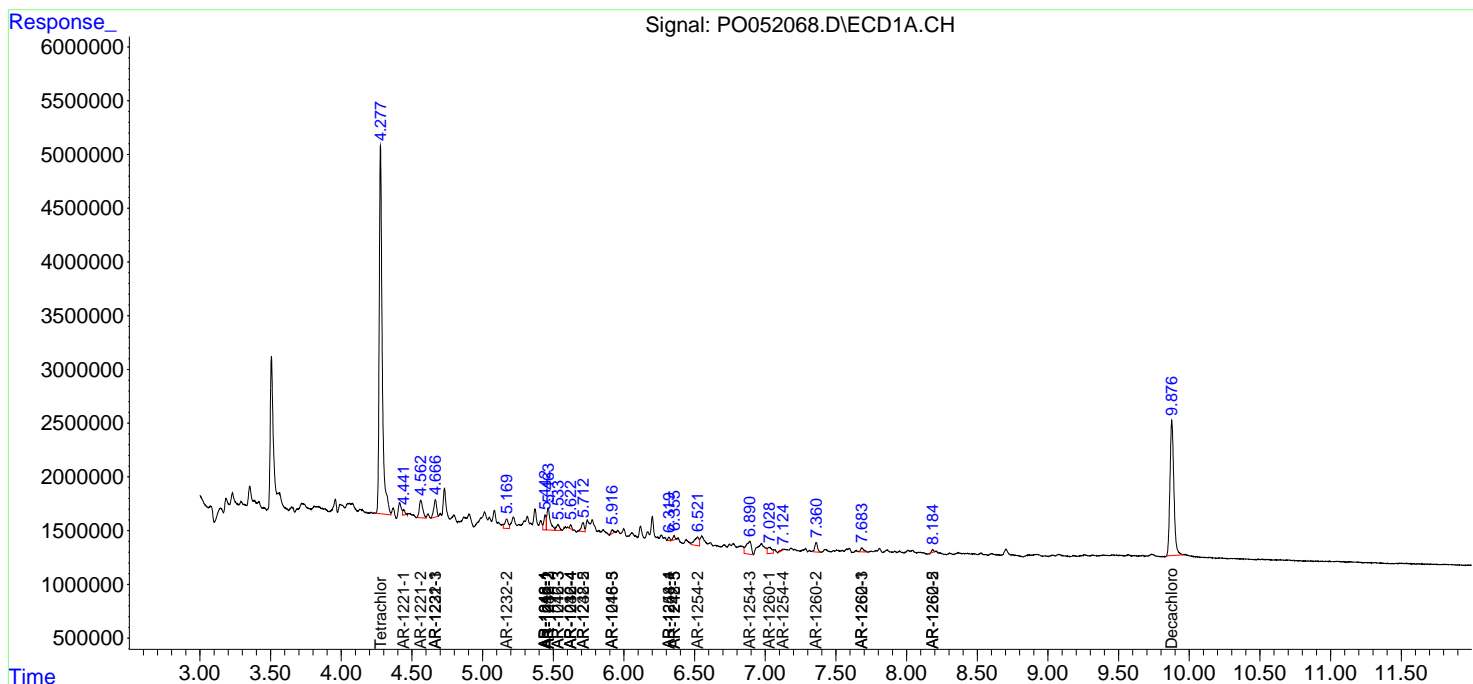
(f)=RT Delta > 1/2 Window (#)=Amounts differ by > 25% (m)=manual int.

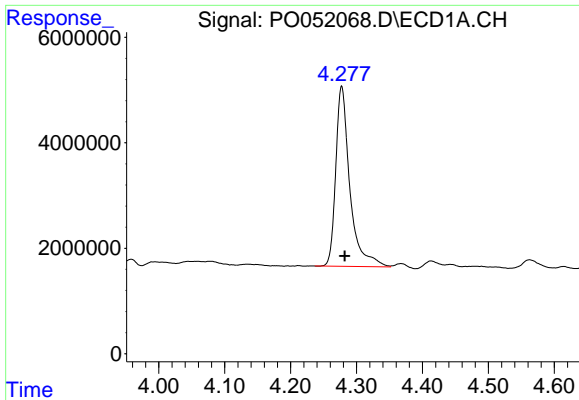
Data Path : Z:\pestpcbsrv\HPCHEM1\ECD\_O\Data\PO113018\  
 Data File : PO052068.D  
 Signal(s) : Signal #1: ECD1A.CH Signal #2: ECD2B.CH  
 Acq On : 01 Dec 2018 00:09  
 Operator : SM/SJ  
 Sample : J6128-05  
 Misc :  
 ALS Vial : 24 Sample Multiplier: 1

Instrument :  
 ECD\_O  
 ClientSampled :

Integration File signal 1: autoint1.e  
 Integration File signal 2: autoint2.e  
 Quant Time: Dec 01 03:16:07 2018  
 Quant Method : Z:\pestpcbsrv\HPCHEM1\ECD\_O\methods\PO112918.M  
 Quant Title : GC EXTRACTABLES  
 QLast Update : Fri Nov 30 03:43:16 2018  
 Response via : Initial Calibration  
 Integrator: ChemStation 6890 Scale Mode: Small noise peaks clipped

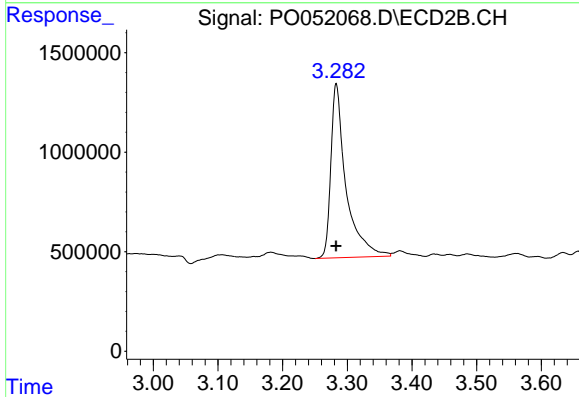
Volume Inj. : 2 µl  
 Signal #1 Phase : ZB-MR1 Signal #2 Phase: ZB-MR2  
 Signal #1 Info : 30Mx0.32mmx 0.50µ Signal #2 Info : 30M x 0.32mm x 0.25µm



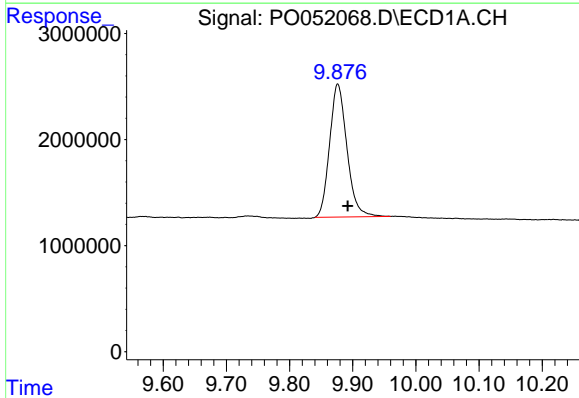


#1 Tetrachloro-m-xylene  
 R.T.: 4.277 min  
 Delta R.T.: -0.005 min  
 Response: 50851962  
 Conc: 20.60 ng/ml

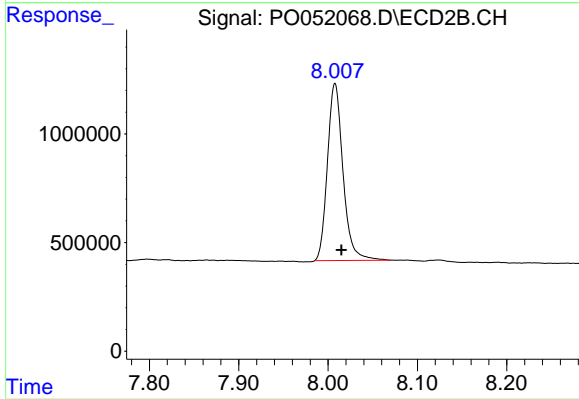
Instrument :  
 ECD\_O  
 ClientSampled :



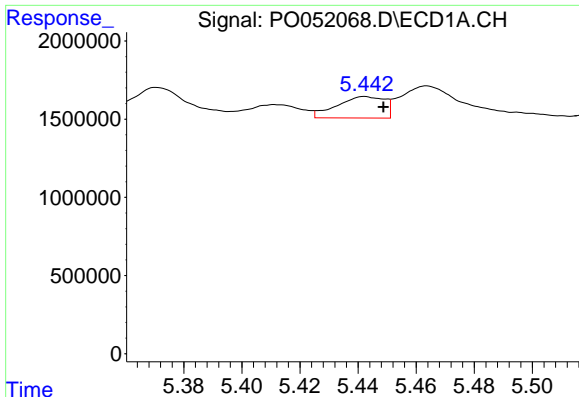
#1 Tetrachloro-m-xylene  
 R.T.: 3.283 min  
 Delta R.T.: 0.000 min  
 Response: 14287504  
 Conc: 15.96 ng/ml



#2 Decachlorobiphenyl  
 R.T.: 9.876 min  
 Delta R.T.: -0.016 min  
 Response: 23921908  
 Conc: 14.70 ng/ml



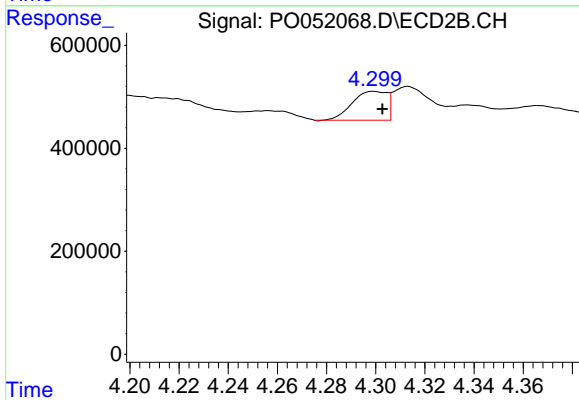
#2 Decachlorobiphenyl  
 R.T.: 8.008 min  
 Delta R.T.: -0.007 min  
 Response: 9868683  
 Conc: 14.40 ng/ml



#3 AR-1016-1

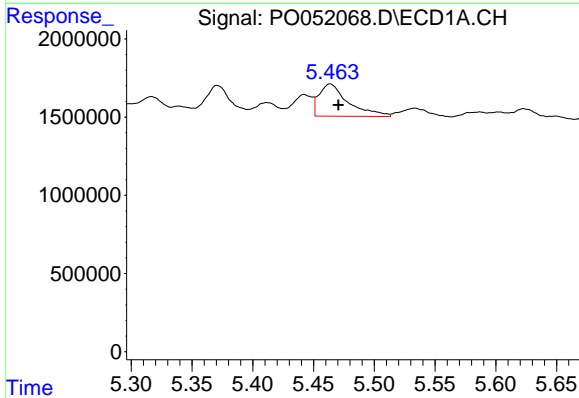
R.T.: 5.442 min  
 Delta R.T.: -0.006 min  
 Response: 1562027  
 Conc: 28.02 ng/ml

Instrument :  
 ECD\_O  
 ClientSampleId :



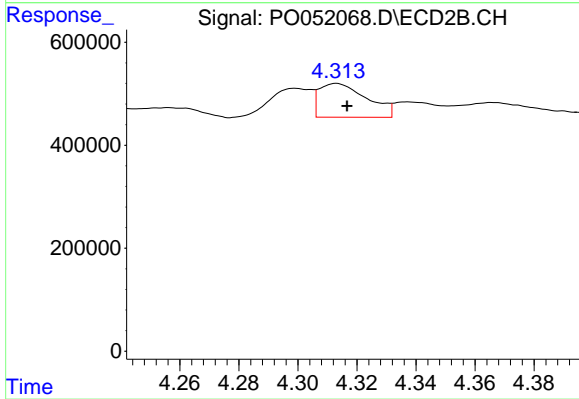
#3 AR-1016-1

R.T.: 4.299 min  
 Delta R.T.: -0.004 min  
 Response: 551709  
 Conc: 28.27 ng/ml



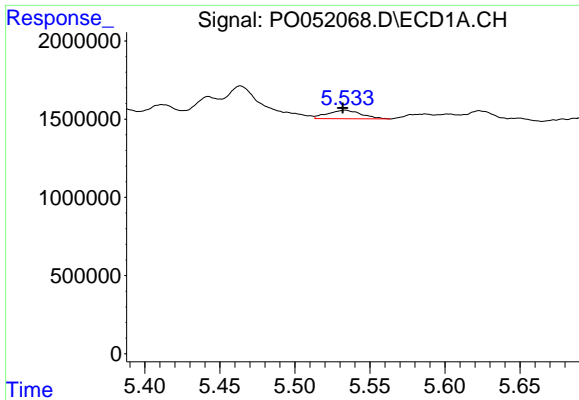
#4 AR-1016-2

R.T.: 5.464 min  
 Delta R.T.: -0.007 min  
 Response: 3426472  
 Conc: 40.35 ng/ml



#4 AR-1016-2

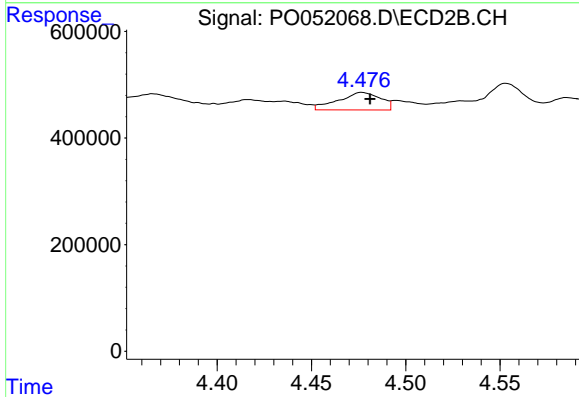
R.T.: 4.313 min  
 Delta R.T.: -0.003 min  
 Response: 737562  
 Conc: 16.74 ng/ml



#5 AR-1016-3

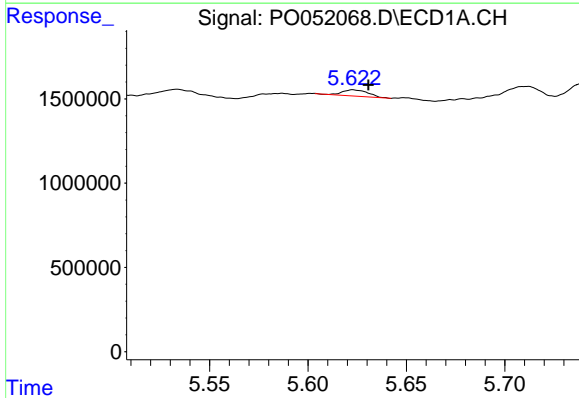
R.T.: 5.534 min  
 Delta R.T.: 0.002 min  
 Response: 846898  
 Conc: 17.33 ng/ml

Instrument :  
 ECD\_O  
 ClientSampleId :



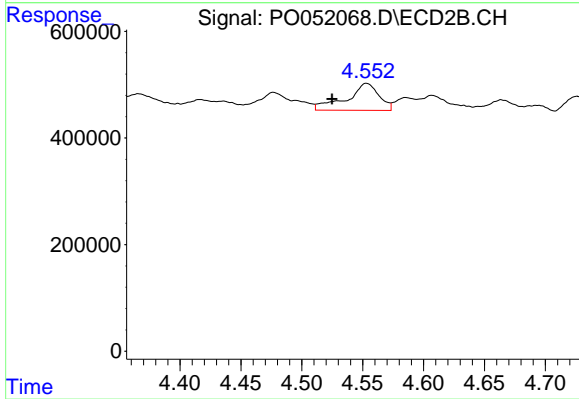
#5 AR-1016-3

R.T.: 4.477 min  
 Delta R.T.: -0.004 min  
 Response: 512245  
 Conc: 27.85 ng/ml



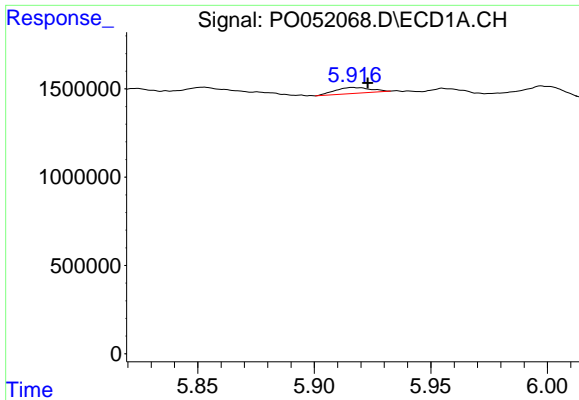
#6 AR-1016-4

R.T.: 5.623 min  
 Delta R.T.: -0.008 min  
 Response: 346793  
 Conc: 8.70 ng/ml



#6 AR-1016-4

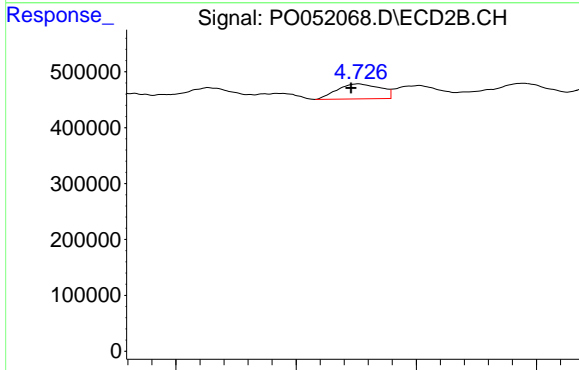
R.T.: 4.553 min  
 Delta R.T.: 0.028 min  
 Response: 930331  
 Conc: 62.44 ng/ml



#7 AR-1016-5

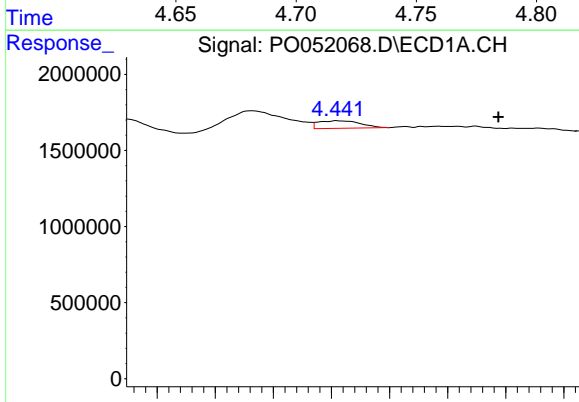
R.T.: 5.917 min  
 Delta R.T.: -0.006 min  
 Response: 356199  
 Conc: 9.79 ng/ml

Instrument :  
 ECD\_O  
 ClientSampleId :



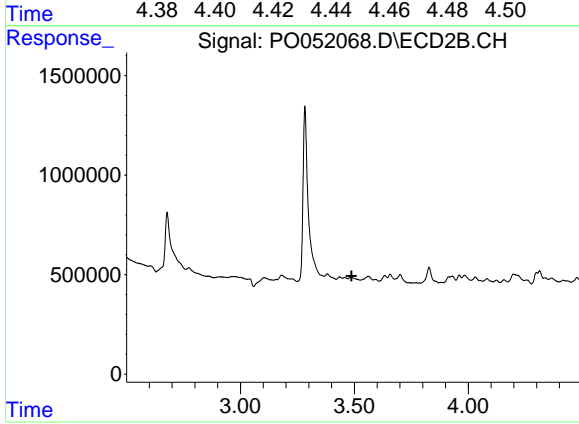
#7 AR-1016-5

R.T.: 4.726 min  
 Delta R.T.: 0.003 min  
 Response: 333107  
 Conc: 18.45 ng/ml



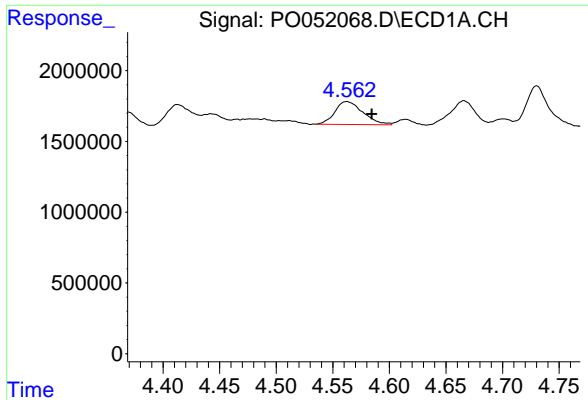
#8 AR-1221-1

R.T.: 4.442 min  
 Delta R.T.: -0.056 min  
 Response: 496739  
 Conc: 24.86 ng/ml



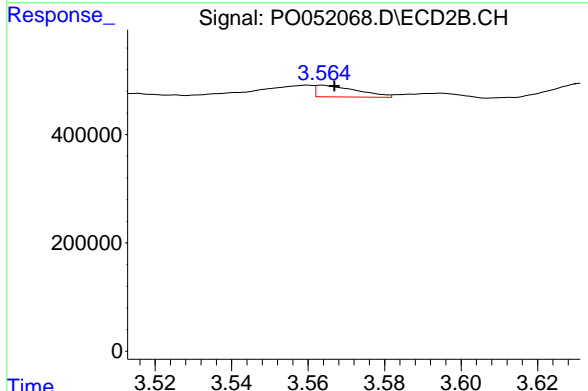
#8 AR-1221-1

R.T.: 0.000 min  
 Exp R.T.: 3.488 min  
 Response: 0  
 Conc: N.D.

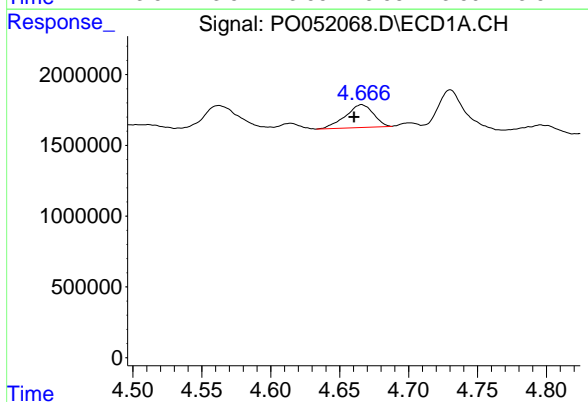


#9 AR-1221-2  
 R.T.: 4.563 min  
 Delta R.T.: -0.022 min  
 Response: 2786516  
 Conc: 195.15 ng/ml

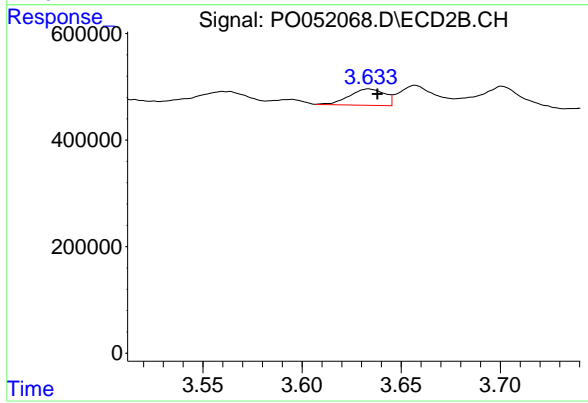
Instrument :  
 ECD\_O  
 ClientSampleId :



#9 AR-1221-2  
 R.T.: 3.564 min  
 Delta R.T.: -0.003 min  
 Response: 158596  
 Conc: 29.47 ng/ml

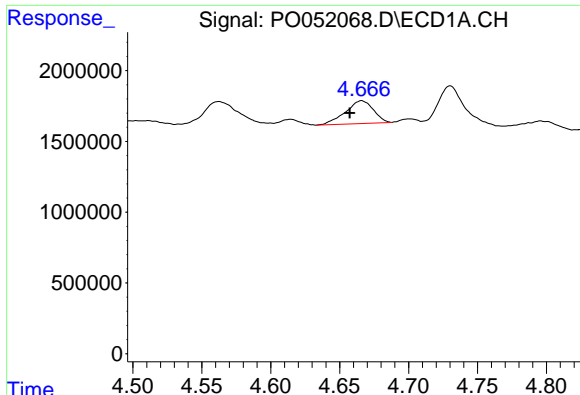


#10 AR-1221-3  
 R.T.: 4.666 min  
 Delta R.T.: 0.006 min  
 Response: 2268849  
 Conc: 50.22 ng/ml



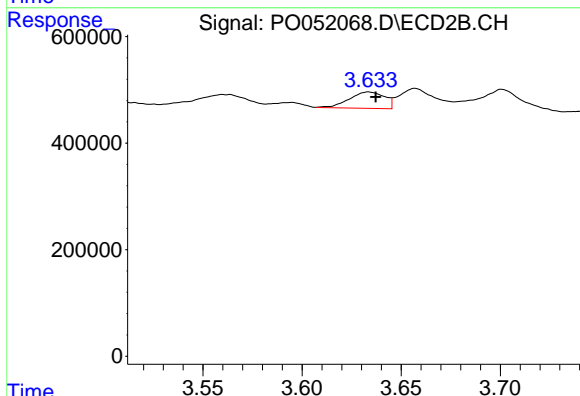
#10 AR-1221-3  
 R.T.: 3.634 min  
 Delta R.T.: -0.005 min  
 Response: 380635  
 Conc: 21.91 ng/ml



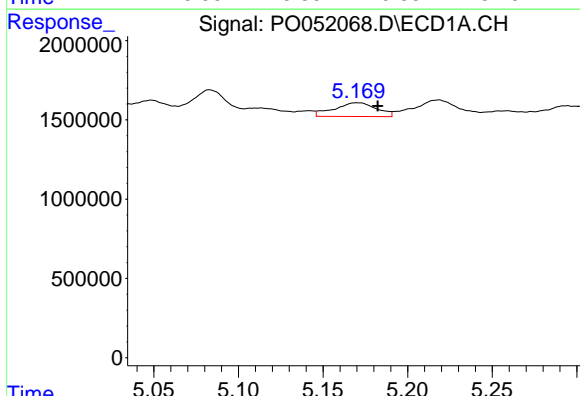


#11 AR-1232-1  
 R.T.: 4.666 min  
 Delta R.T.: 0.009 min  
 Response: 2268849  
 Conc: 61.36 ng/ml

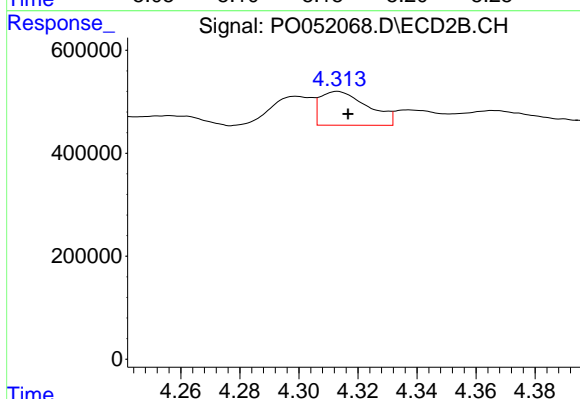
Instrument :  
 ECD\_O  
 ClientSampleId :



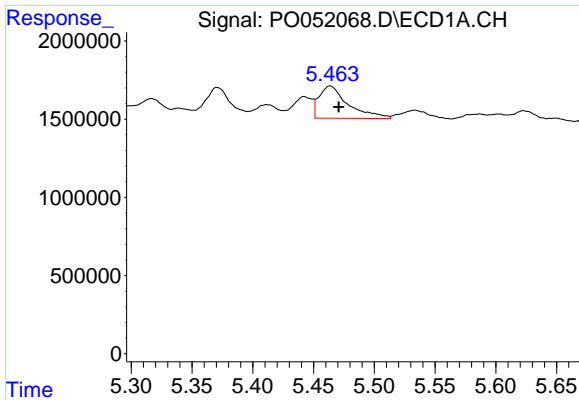
#11 AR-1232-1  
 R.T.: 3.634 min  
 Delta R.T.: -0.004 min  
 Response: 380635  
 Conc: 27.06 ng/ml



#12 AR-1232-2  
 R.T.: 5.170 min  
 Delta R.T.: -0.013 min  
 Response: 1514589  
 Conc: 90.53 ng/ml



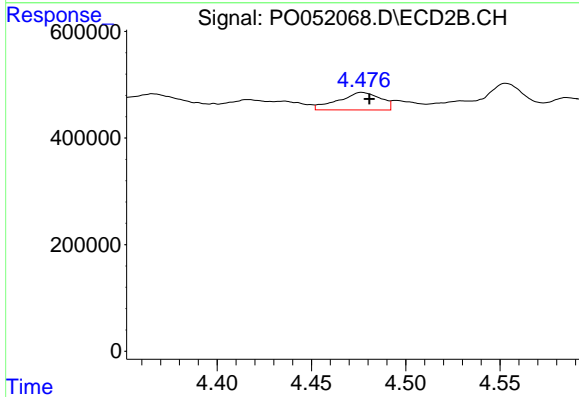
#12 AR-1232-2  
 R.T.: 4.313 min  
 Delta R.T.: -0.003 min  
 Response: 737562  
 Conc: 42.72 ng/ml



#13 AR-1232-3

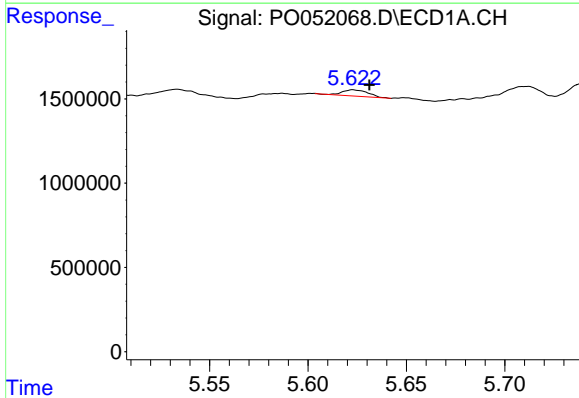
R.T.: 5.464 min  
 Delta R.T.: -0.007 min  
 Response: 3426472  
 Conc: 102.41 ng/ml

Instrument :  
 ECD\_O  
 ClientSampleId :



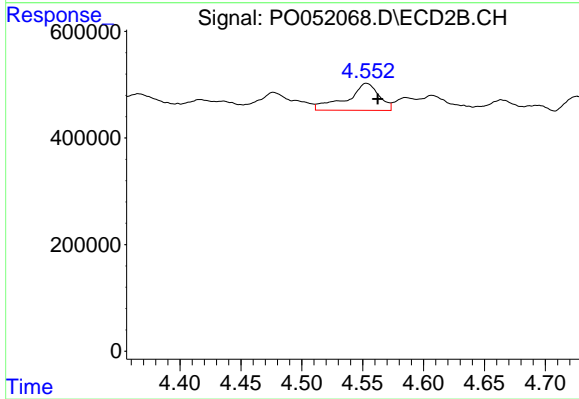
#13 AR-1232-3

R.T.: 4.477 min  
 Delta R.T.: -0.004 min  
 Response: 512245  
 Conc: 71.64 ng/ml



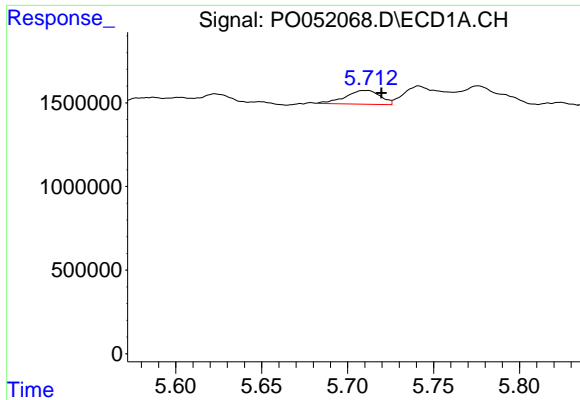
#14 AR-1232-4

R.T.: 5.623 min  
 Delta R.T.: -0.009 min  
 Response: 346793  
 Conc: 22.10 ng/ml



#14 AR-1232-4

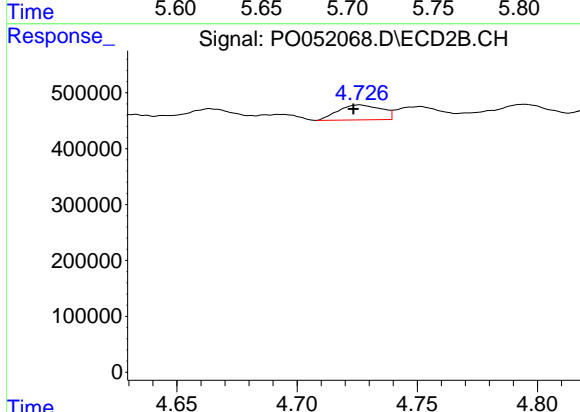
R.T.: 4.553 min  
 Delta R.T.: -0.009 min  
 Response: 930331  
 Conc: 155.50 ng/ml



#15 AR-1232-5

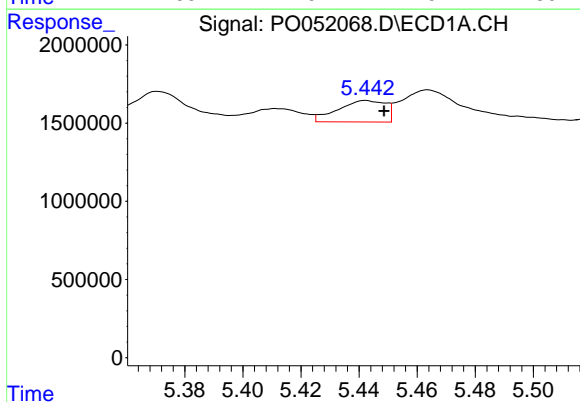
R.T.: 5.712 min  
 Delta R.T.: -0.008 min  
 Response: 1157540  
 Conc: 108.31 ng/ml

Instrument :  
 ECD\_O  
 ClientSampled :



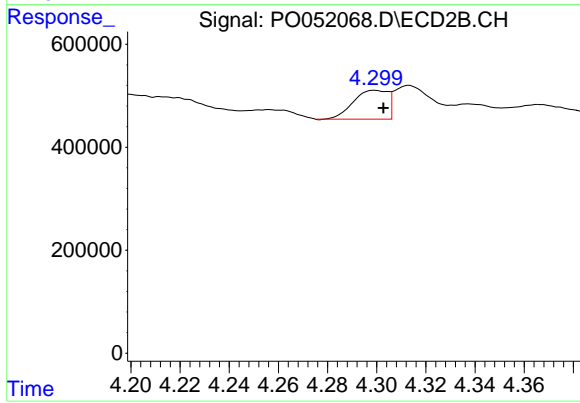
#15 AR-1232-5

R.T.: 4.726 min  
 Delta R.T.: 0.003 min  
 Response: 333107  
 Conc: 49.58 ng/ml



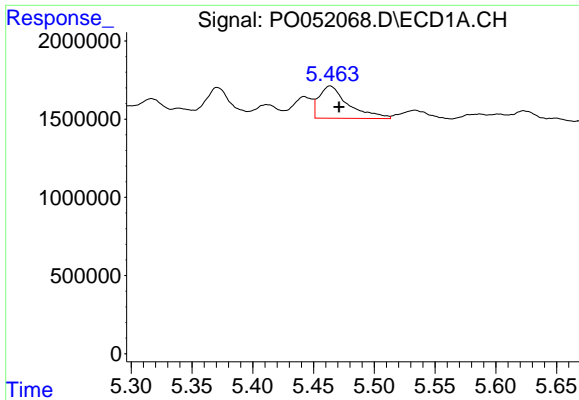
#16 AR-1242-1

R.T.: 5.442 min  
 Delta R.T.: -0.006 min  
 Response: 1562027  
 Conc: 36.97 ng/ml



#16 AR-1242-1

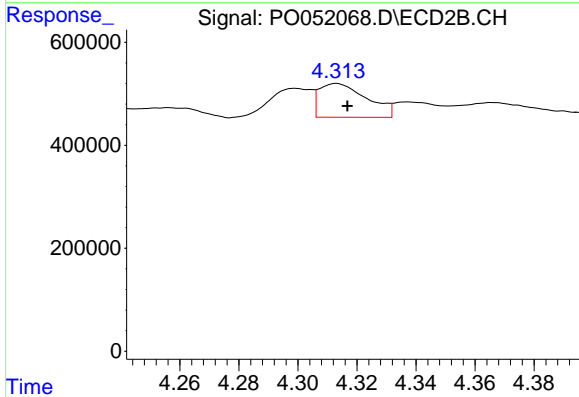
R.T.: 4.299 min  
 Delta R.T.: -0.004 min  
 Response: 551709  
 Conc: 37.51 ng/ml



#17 AR-1242-2

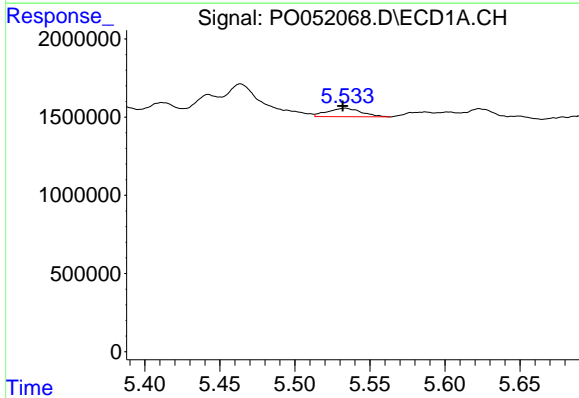
R.T.: 5.464 min  
 Delta R.T.: -0.007 min  
 Response: 3426472  
 Conc: 53.25 ng/ml

Instrument :  
 ECD\_O  
 ClientSampleId :



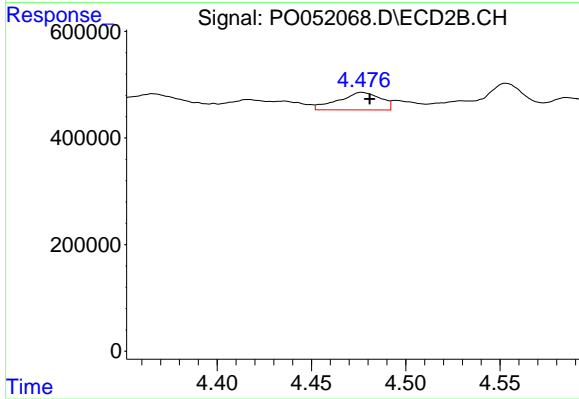
#17 AR-1242-2

R.T.: 4.313 min  
 Delta R.T.: -0.004 min  
 Response: 737562  
 Conc: 22.69 ng/ml



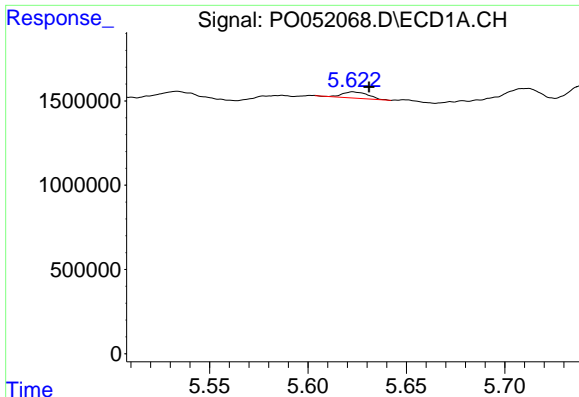
#18 AR-1242-3

R.T.: 5.534 min  
 Delta R.T.: 0.002 min  
 Response: 846898  
 Conc: 22.85 ng/ml



#18 AR-1242-3

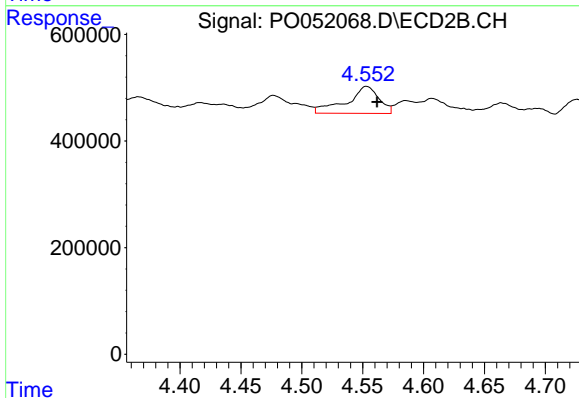
R.T.: 4.477 min  
 Delta R.T.: -0.004 min  
 Response: 512245  
 Conc: 37.45 ng/ml



#19 AR-1242-4

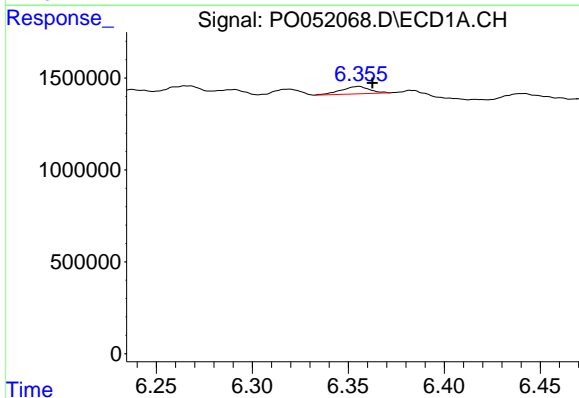
R.T.: 5.623 min  
 Delta R.T.: -0.008 min  
 Response: 346793  
 Conc: 11.36 ng/ml

Instrument :  
 ECD\_O  
 ClientSampleId :



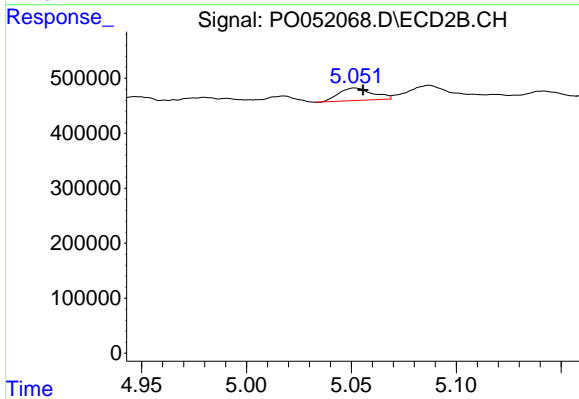
#19 AR-1242-4

R.T.: 4.553 min  
 Delta R.T.: -0.009 min  
 Response: 930331  
 Conc: 73.69 ng/ml



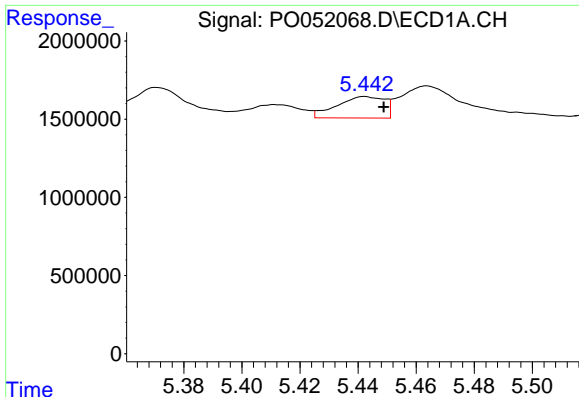
#20 AR-1242-5

R.T.: 6.356 min  
 Delta R.T.: -0.007 min  
 Response: 413451  
 Conc: 13.92 ng/ml



#20 AR-1242-5

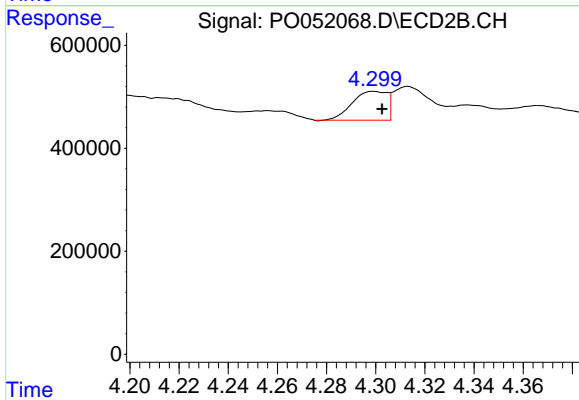
R.T.: 5.052 min  
 Delta R.T.: -0.004 min  
 Response: 254408  
 Conc: 15.53 ng/ml



#21 AR-1248-1

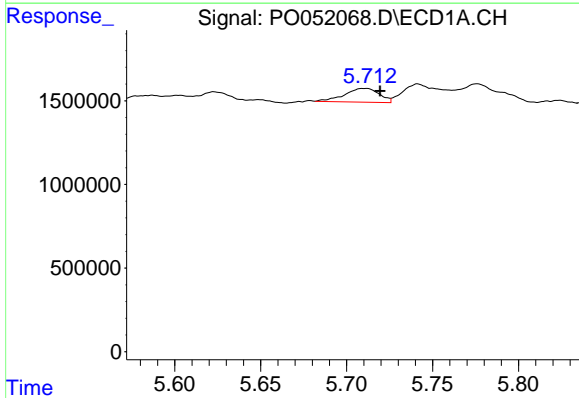
R.T.: 5.442 min  
 Delta R.T.: -0.006 min  
 Response: 1562027  
 Conc: 50.34 ng/ml

Instrument :  
 ECD\_O  
 ClientSampleId :



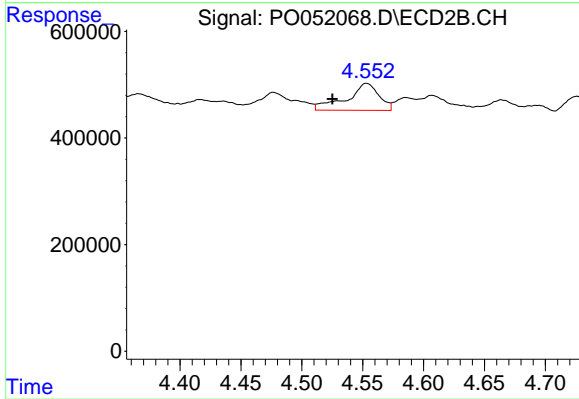
#21 AR-1248-1

R.T.: 4.299 min  
 Delta R.T.: -0.004 min  
 Response: 551709  
 Conc: 45.64 ng/ml



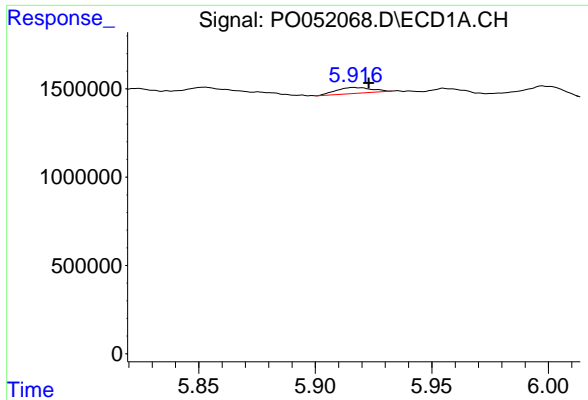
#22 AR-1248-2

R.T.: 5.712 min  
 Delta R.T.: -0.008 min  
 Response: 1157540  
 Conc: 28.85 ng/ml



#22 AR-1248-2

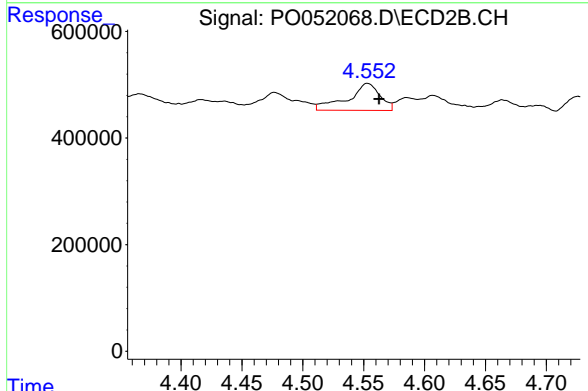
R.T.: 4.553 min  
 Delta R.T.: 0.028 min  
 Response: 930331  
 Conc: 52.18 ng/ml



#23 AR-1248-3

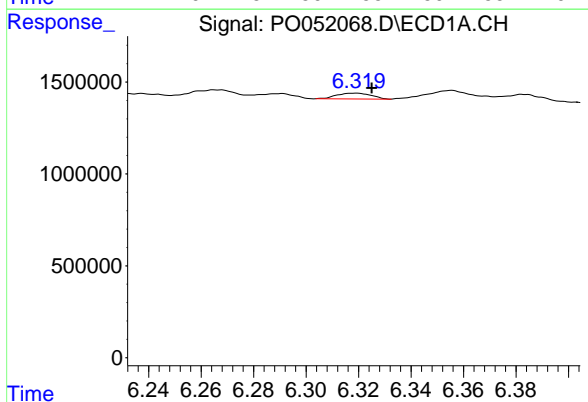
R.T.: 5.917 min  
 Delta R.T.: -0.006 min  
 Response: 356199  
 Conc: 7.94 ng/ml

Instrument :  
 ECD\_O  
 ClientSampleId :



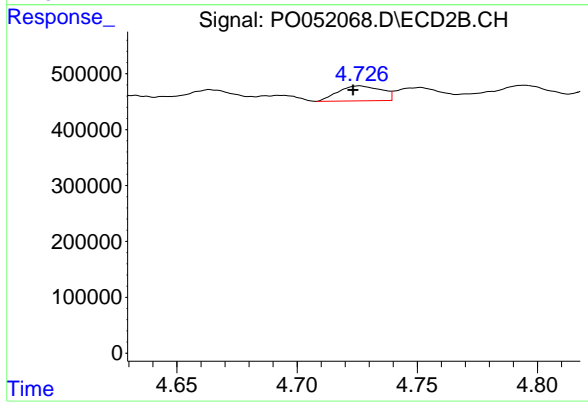
#23 AR-1248-3

R.T.: 4.553 min  
 Delta R.T.: -0.010 min  
 Response: 930331  
 Conc: 51.98 ng/ml



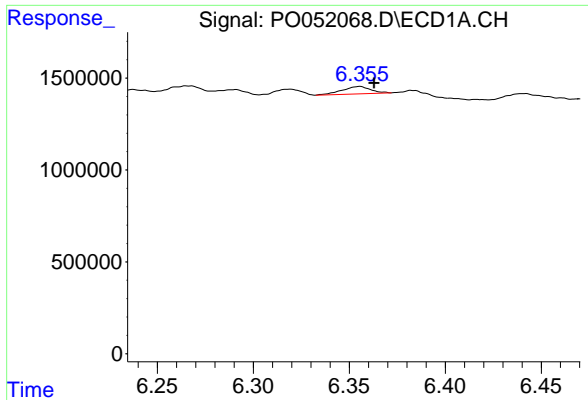
#24 AR-1248-4

R.T.: 6.319 min  
 Delta R.T.: -0.006 min  
 Response: 290122  
 Conc: 5.87 ng/ml



#24 AR-1248-4

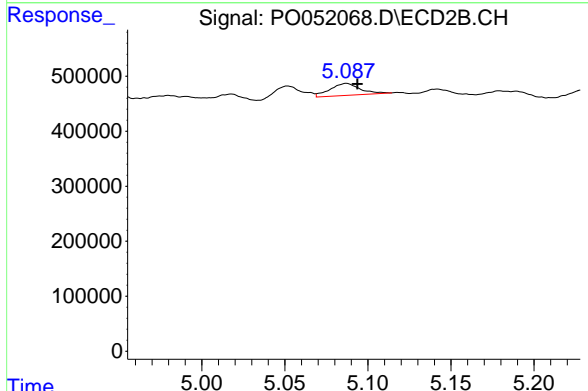
R.T.: 4.726 min  
 Delta R.T.: 0.003 min  
 Response: 333107  
 Conc: 15.37 ng/ml



#25 AR-1248-5

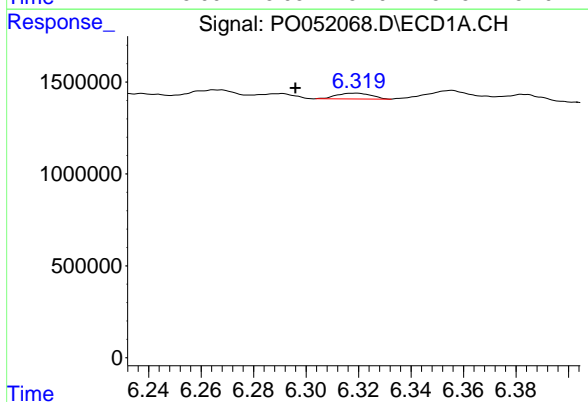
R.T.: 6.356 min  
 Delta R.T.: -0.007 min  
 Response: 413451  
 Conc: 8.81 ng/ml

Instrument :  
 ECD\_O  
 ClientSampleId :



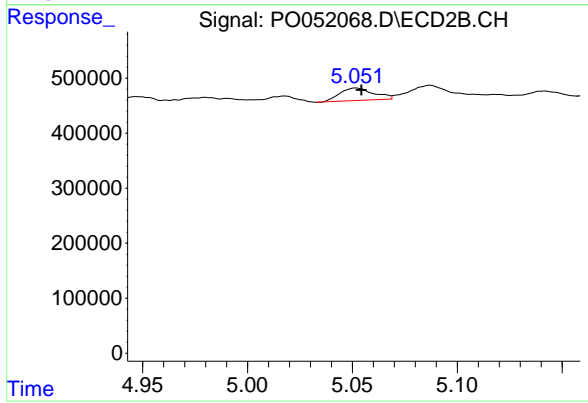
#25 AR-1248-5

R.T.: 5.087 min  
 Delta R.T.: -0.007 min  
 Response: 273338  
 Conc: 12.75 ng/ml



#26 AR-1254-1

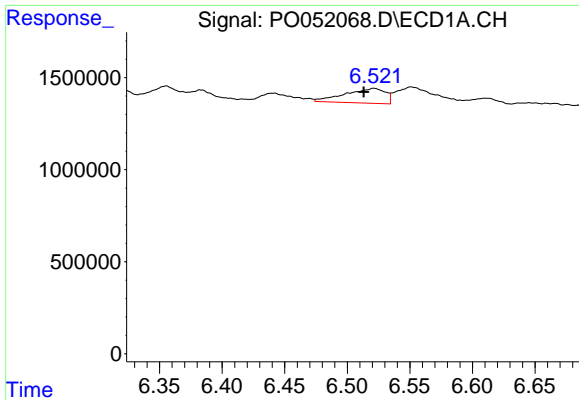
R.T.: 6.319 min  
 Delta R.T.: 0.023 min  
 Response: 290122  
 Conc: 5.39 ng/ml



#26 AR-1254-1

R.T.: 5.052 min  
 Delta R.T.: -0.003 min  
 Response: 254408  
 Conc: 7.10 ng/ml

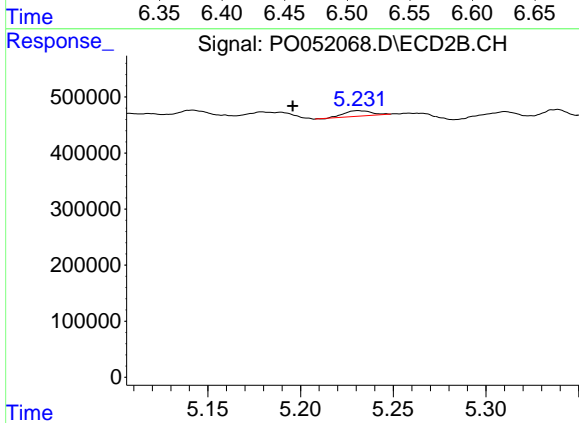




#27 AR-1254-2

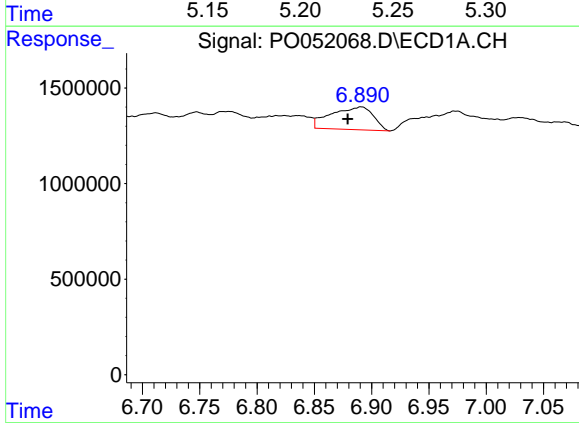
R.T.: 6.521 min  
 Delta R.T.: 0.008 min  
 Response: 1794384  
 Conc: 21.24 ng/ml

Instrument :  
 ECD\_O  
 ClientSampled :



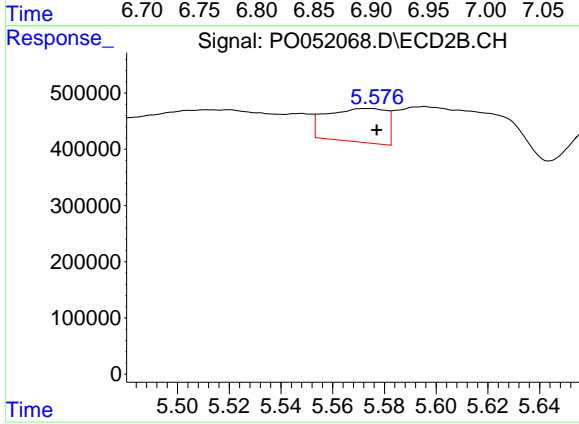
#27 AR-1254-2

R.T.: 5.231 min  
 Delta R.T.: 0.035 min  
 Response: 101102  
 Conc: 3.28 ng/ml



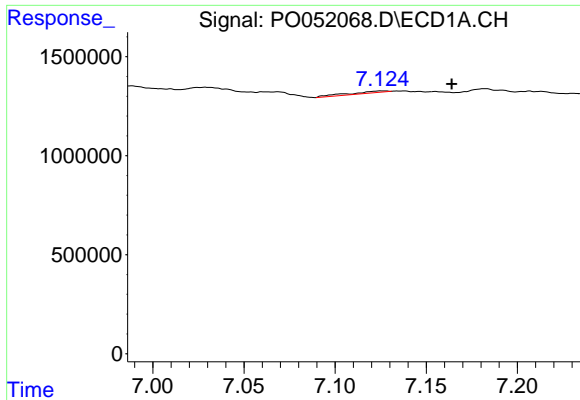
#28 AR-1254-3

R.T.: 6.891 min  
 Delta R.T.: 0.012 min  
 Response: 3061200  
 Conc: 33.72 ng/ml



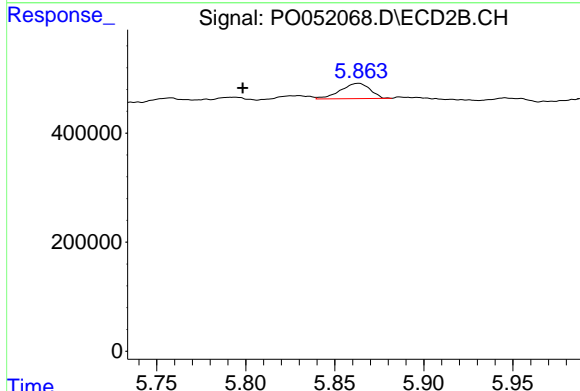
#28 AR-1254-3

R.T.: 5.575 min  
 Delta R.T.: -0.002 min  
 Response: 952538  
 Conc: 19.27 ng/ml

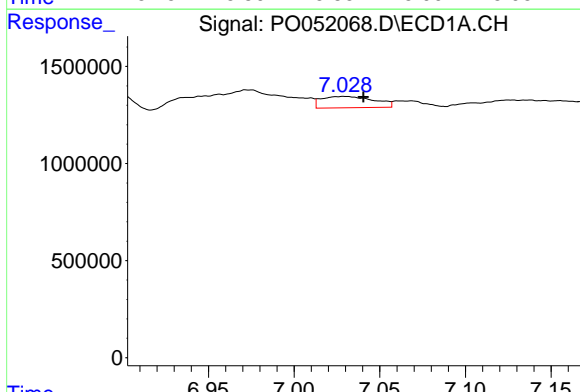


#29 AR-1254-4  
 R.T.: 7.125 min  
 Delta R.T.: -0.039 min  
 Response: 142116  
 Conc: 2.03 ng/ml

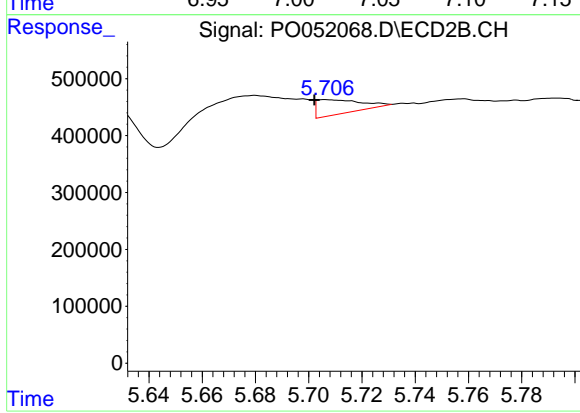
Instrument :  
 ECD\_O  
 ClientSampled :



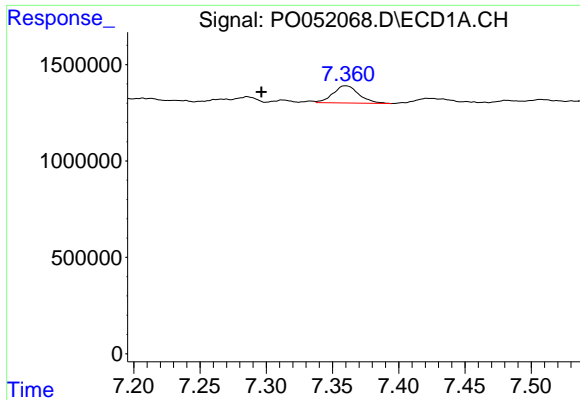
#29 AR-1254-4  
 R.T.: 5.863 min  
 Delta R.T.: 0.065 min  
 Response: 325291  
 Conc: 10.57 ng/ml



#31 AR-1260-1  
 R.T.: 7.029 min  
 Delta R.T.: -0.012 min  
 Response: 1250420  
 Conc: 17.75 ng/ml



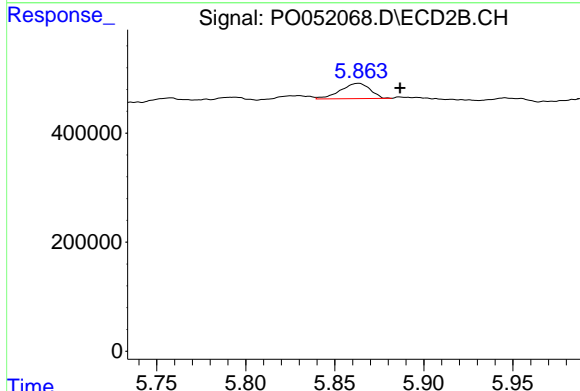
#31 AR-1260-1  
 R.T.: 5.706 min  
 Delta R.T.: 0.004 min  
 Response: 290990  
 Conc: 8.30 ng/ml



#32 AR-1260-2

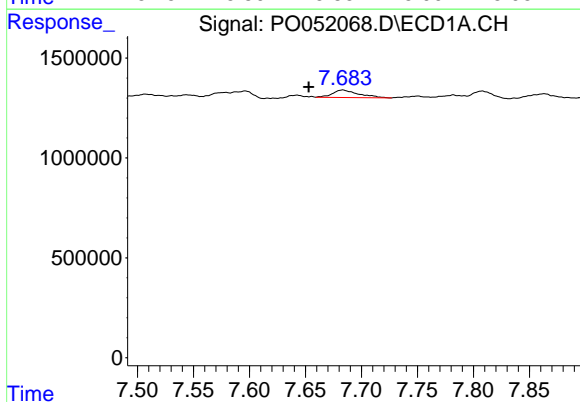
R.T.: 7.360 min  
 Delta R.T.: 0.064 min  
 Response: 1211827  
 Conc: 13.02 ng/ml

Instrument :  
 ECD\_O  
 ClientSampleId :



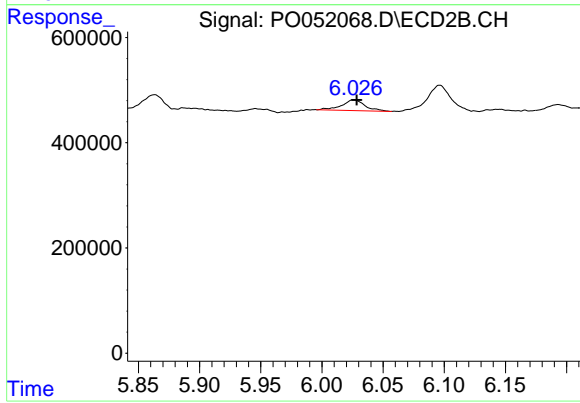
#32 AR-1260-2

R.T.: 5.863 min  
 Delta R.T.: -0.023 min  
 Response: 325291  
 Conc: 7.48 ng/ml



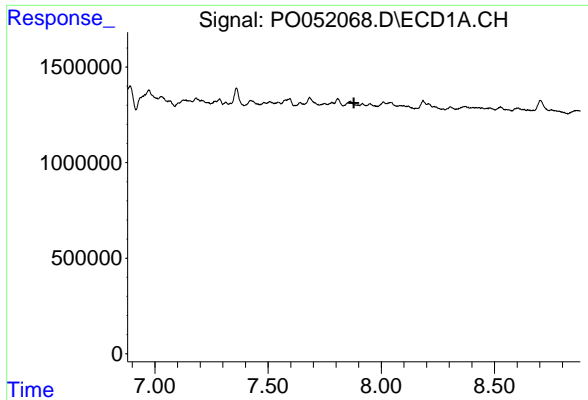
#33 AR-1260-3

R.T.: 7.683 min  
 Delta R.T.: 0.031 min  
 Response: 608427  
 Conc: 9.29 ng/ml



#33 AR-1260-3

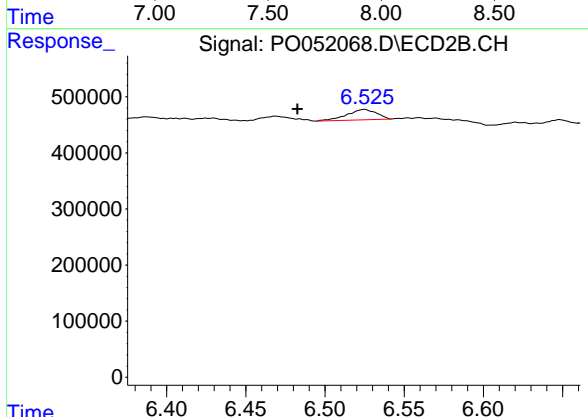
R.T.: 6.026 min  
 Delta R.T.: -0.003 min  
 Response: 268026  
 Conc: 6.67 ng/ml



#34 AR-1260-4

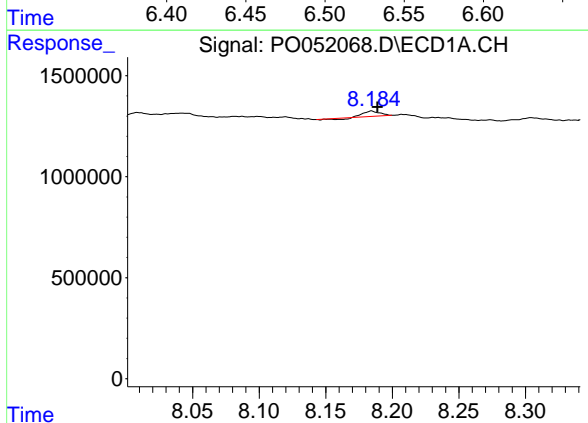
R.T.: 0.000 min  
 Exp R.T.: 7.879 min  
 Response: 0  
 Conc: N.D.

Instrument :  
 ECD\_O  
 ClientSampled :



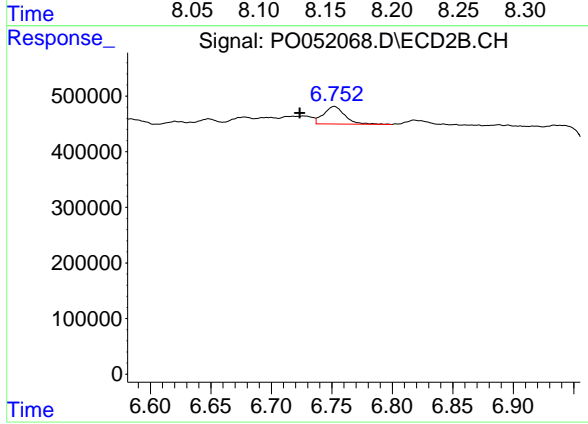
#34 AR-1260-4

R.T.: 6.525 min  
 Delta R.T.: 0.042 min  
 Response: 241783  
 Conc: 8.74 ng/ml



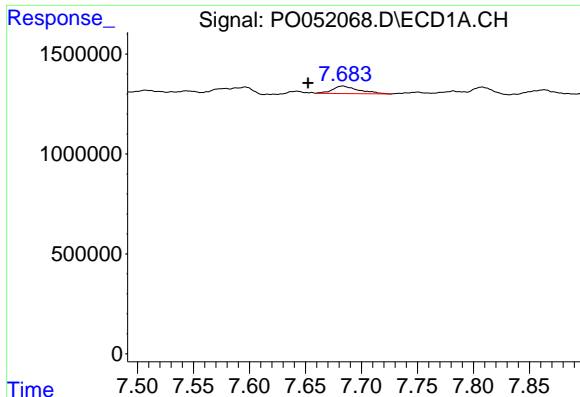
#35 AR-1260-5

R.T.: 8.184 min  
 Delta R.T.: -0.004 min  
 Response: 180095  
 Conc: 1.09 ng/ml



#35 AR-1260-5

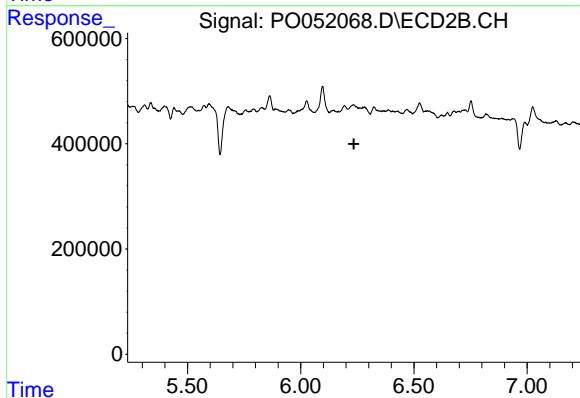
R.T.: 6.752 min  
 Delta R.T.: 0.029 min  
 Response: 384415  
 Conc: 5.33 ng/ml



#36 AR-1262-1

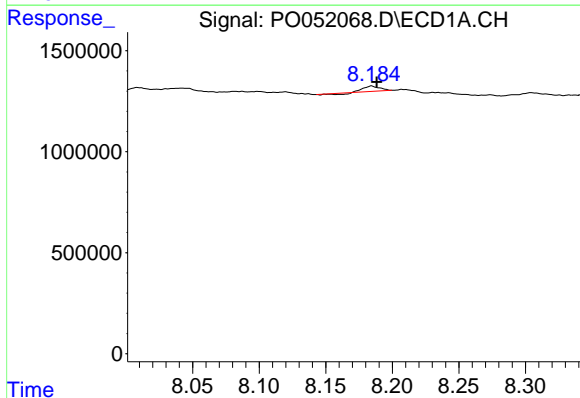
R.T.: 7.683 min  
 Delta R.T.: 0.031 min  
 Response: 608427  
 Conc: 5.83 ng/ml

Instrument :  
 ECD\_O  
 ClientSampleId :



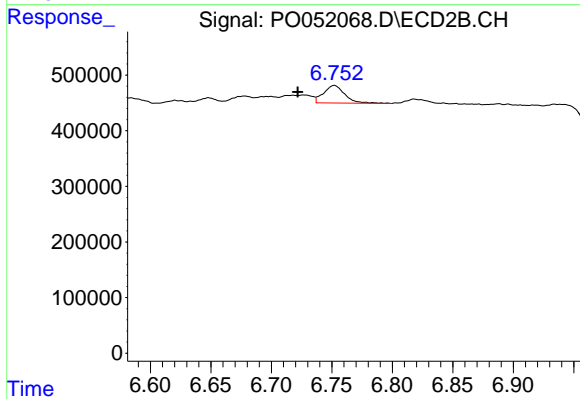
#36 AR-1262-1

R.T.: 0.000 min  
 Exp R.T. : 6.235 min  
 Response: 0  
 Conc: N.D.



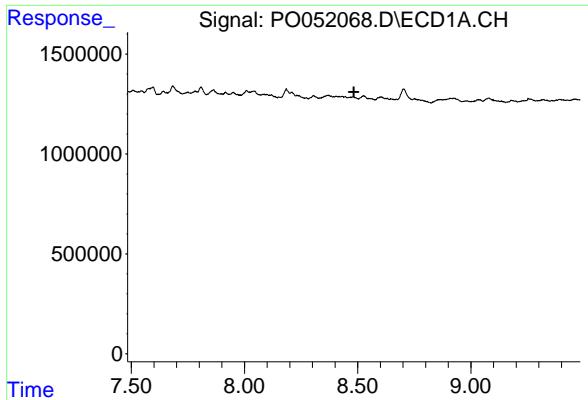
#37 AR-1262-2

R.T.: 8.184 min  
 Delta R.T.: -0.004 min  
 Response: 180095  
 Conc: 0.92 ng/ml



#37 AR-1262-2

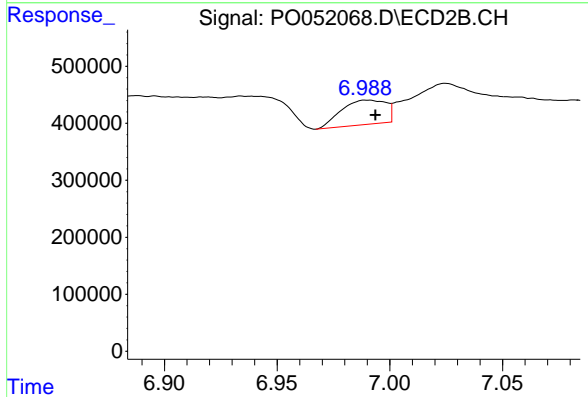
R.T.: 6.752 min  
 Delta R.T.: 0.030 min  
 Response: 384415  
 Conc: 4.64 ng/ml



#38 AR-1262-3

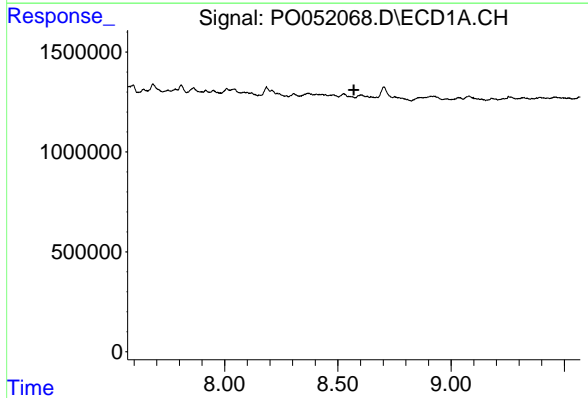
R.T.: 0.000 min  
 Exp R.T. : 8.483 min  
 Response: 0  
 Conc: N.D.

Instrument :  
 ECD\_O  
 ClientSampleId :



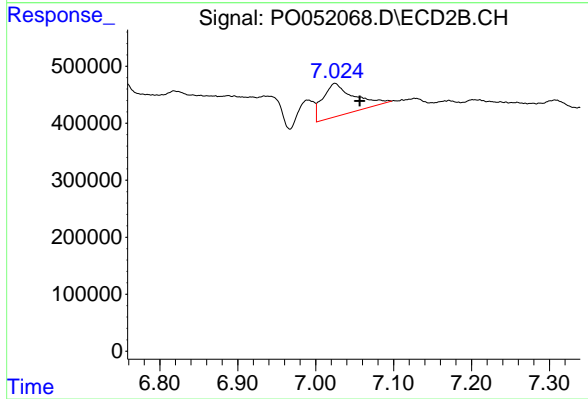
#38 AR-1262-3

R.T.: 6.991 min  
 Delta R.T.: -0.003 min  
 Response: 588543  
 Conc: 17.72 ng/ml



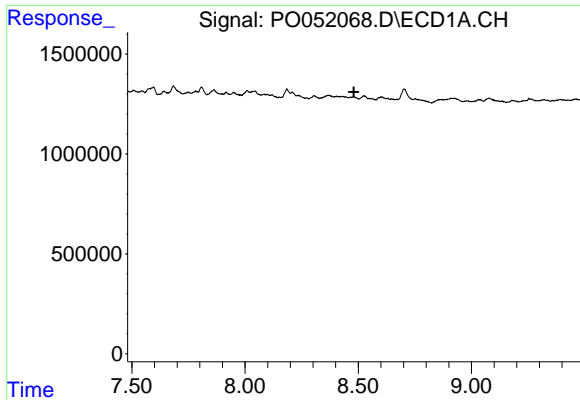
#39 AR-1262-4

R.T.: 0.000 min  
 Exp R.T. : 8.571 min  
 Response: 0  
 Conc: N.D.



#39 AR-1262-4

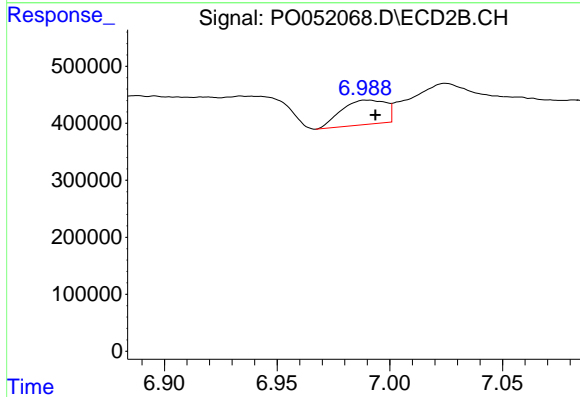
R.T.: 7.025 min  
 Delta R.T.: -0.032 min  
 Response: 1596950  
 Conc: 26.10 ng/ml



#41 AR-1268-1

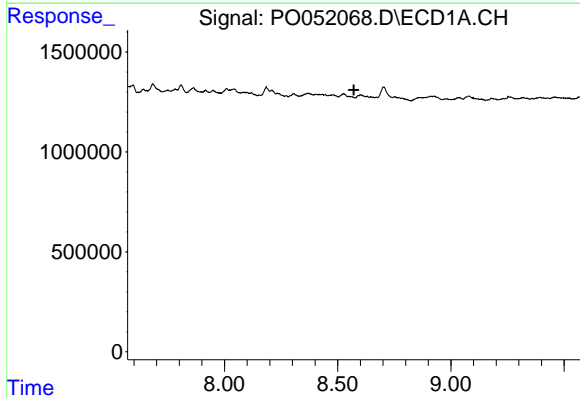
R.T.: 0.000 min  
 Exp R.T. : 8.481 min  
 Response: 0  
 Conc: N.D.

Instrument :  
 ECD\_O  
 ClientSampled :



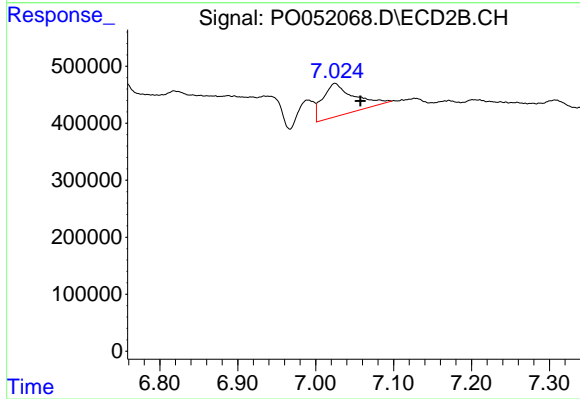
#41 AR-1268-1

R.T.: 6.991 min  
 Delta R.T.: -0.003 min  
 Response: 588543  
 Conc: 5.13 ng/ml



#42 AR-1268-2

R.T.: 0.000 min  
 Exp R.T. : 8.571 min  
 Response: 0  
 Conc: N.D.



#42 AR-1268-2

R.T.: 7.025 min  
 Delta R.T.: -0.033 min  
 Response: 1596950  
 Conc: 14.63 ng/ml