

Data Path : Z:\pestpcbsrv\HPCHEM1\ECD\_0\Data\PO113018\  
 Data File : PO052076.D  
 Signal(s) : Signal #1: ECD1A.CH Signal #2: ECD2B.CH  
 Acq On : 01 Dec 2018 2:25  
 Operator : SM/SJ  
 Sample : J6128-13  
 Misc :  
 ALS Vial : 32 Sample Multiplier: 1

Instrument :  
 ECD\_0  
 ClientSampled :

Integration File signal 1: autoint1.e  
 Integration File signal 2: autoint2.e  
 Quant Time: Dec 01 03:22:28 2018  
 Quant Method : Z:\pestpcbsrv\HPCHEM1\ECD\_0\methods\PO112918.M  
 Quant Title : GC EXTRACTABLES  
 QLast Update : Fri Nov 30 03:43:16 2018  
 Response via : Initial Calibration  
 Integrator: ChemStation 6890 Scale Mode: Small noise peaks clipped

Volume Inj. : 2 µl  
 Signal #1 Phase : ZB-MR1 Signal #2 Phase: ZB-MR2  
 Signal #1 Info : 30Mx0.32mmx 0.50µ Signal #2 Info : 30M x 0.32mm x 0.25µm

Compound	RT#1	RT#2	Resp#1	Resp#2	ng/ml	ng/ml
System Monitoring Compounds						
1) SA Tetrachlo...	4.276	3.282	53276073	14446570	21.586	16.138 #
2) SA Decachlor...	9.875	8.007	24312913	10053246	14.936	14.669
Target Compounds						
3) L1 AR-1016-1	5.442	4.297	235856	216682	4.230	11.101 #
4) L1 AR-1016-2	5.462	4.310	847248	147528	9.978	3.349 #
5) L1 AR-1016-3	0.000	4.479	0	183889	N.D.	9.997 #
6) L1 AR-1016-4	0.000	4.553	0	425829	N.D.	28.581 #
7) L1 AR-1016-5	5.918	4.728	563706	293965	15.486	16.278
8) L2 AR-1221-1	4.446	0.000	41097	0	2.057	N.D. #
9) L2 AR-1221-2	4.562	3.563	2327456	261187	163.003	48.526 #
10) L2 AR-1221-3	4.666	3.633	2057799	240674	45.552	13.855 #
11) L3 AR-1232-1	4.666	3.633	2057799	240674	55.653	17.109 #
12) L3 AR-1232-2	5.160	4.310	736131	147528	43.998	8.545 #
13) L3 AR-1232-3	5.462	4.479	847248	183889	25.322	25.716
14) L3 AR-1232-4	0.000	4.553	0	425829	N.D.	71.176 #
15) L3 AR-1232-5	5.708	4.728	1320840	293965	123.592	43.757 #
16) L4 AR-1242-1	5.442	4.297	235856	216682	5.582	14.733 #
17) L4 AR-1242-2	5.462	4.310	847248	147528	13.167	4.539 #
18) L4 AR-1242-3	0.000	4.479	0	183889	N.D.	13.445 #
19) L4 AR-1242-4	0.000	4.553	0	425829	N.D.	33.730 #
20) L4 AR-1242-5	6.354	5.051	359140	175451	12.087	10.713
21) L5 AR-1248-1	5.442	4.297	235856	216682	7.601	17.926 #
22) L5 AR-1248-2	5.708	4.553	1320840	425829	32.923	23.884 #
23) L5 AR-1248-3	5.918	4.553	563706	425829	12.569	23.794 #
24) L5 AR-1248-4	6.354	4.728	359140	293965	7.265	13.561 #
25) L5 AR-1248-5	6.354	5.086	359140	136977	7.655	6.387
26) L6 AR-1254-1	6.264	5.051	630519	175451	11.711	4.893 #
27) L6 AR-1254-2	6.519	0.000	1117694	0	13.227	N.D. #
28) L6 AR-1254-3	6.888	5.571	1899018	1164731	20.918	23.567
29) L6 AR-1254-4	7.154	5.862	91831	205163	1.310	6.667 #
31) L7 AR-1260-1	7.026	5.676	1121274	1728697	15.916	49.290 #
32) L7 AR-1260-2	7.359	5.862	1688515	205163	18.148	4.718 #
33) L7 AR-1260-3	7.682	6.025	342989	187740	5.239	4.670
34) L7 AR-1260-4	0.000	6.524	0	167766	N.D.	6.063 #
35) L7 AR-1260-5	8.183	6.752	178556	281711	1.085	3.907 #
36) L8 AR-1262-1	7.682	0.000	342989	0	3.284	N.D. #
37) L8 AR-1262-2	8.183	6.752	178556	281711	0.909	3.397 #
38) L8 AR-1262-3	0.000	6.988	0	256459	N.D.	7.720 #
39) L8 AR-1262-4	0.000	7.026	0	836873	N.D.	13.679 #
41) L9 AR-1268-1	0.000	6.988	0	256459	N.D.	2.233 #
42) L9 AR-1268-2	0.000	7.026	0	836873	N.D.	7.669 #
43) L9 AR-1268-3	0.000	7.308	0	184866	N.D.	1.910 #

Data Path : Z:\pestpcbsrv\HPCHEM1\ECD\_0\Data\PO113018\  
Data File : PO052076.D  
Signal(s) : Signal #1: ECD1A.CH Signal #2: ECD2B.CH  
Acq On : 01 Dec 2018 2:25  
Operator : SM/SJ  
Sample : J6128-13  
Misc :  
ALS Vial : 32 Sample Multiplier: 1

Instrument :  
ECD\_O  
ClientSampleId :

Integration File signal 1: autoint1.e  
Integration File signal 2: autoint2.e  
Quant Time: Dec 01 03:22:28 2018  
Quant Method : Z:\pestpcbsrv\HPCHEM1\ECD\_0\methods\PO112918.M  
Quant Title : GC EXTRACTABLES  
QLast Update : Fri Nov 30 03:43:16 2018  
Response via : Initial Calibration  
Integrator: ChemStation 6890 Scale Mode: Small noise peaks clipped

Volume Inj. : 2 µl  
Signal #1 Phase : ZB-MR1 Signal #2 Phase: ZB-MR2  
Signal #1 Info : 30Mx0.32mmx 0.50µ Signal #2 Info : 30M x 0.32mm x 0.25µm

Compound	RT#1	RT#2	Resp#1	Resp#2	ng/ml	ng/ml
----------	------	------	--------	--------	-------	-------

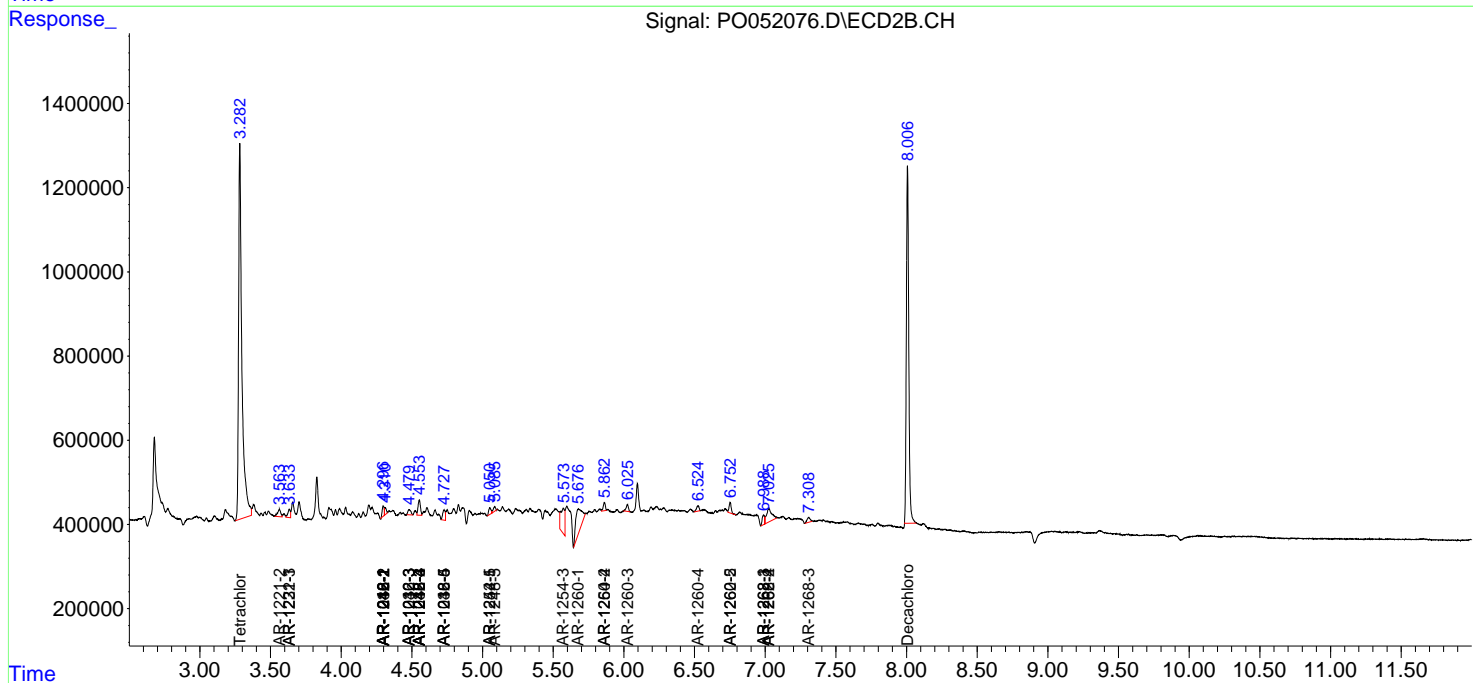
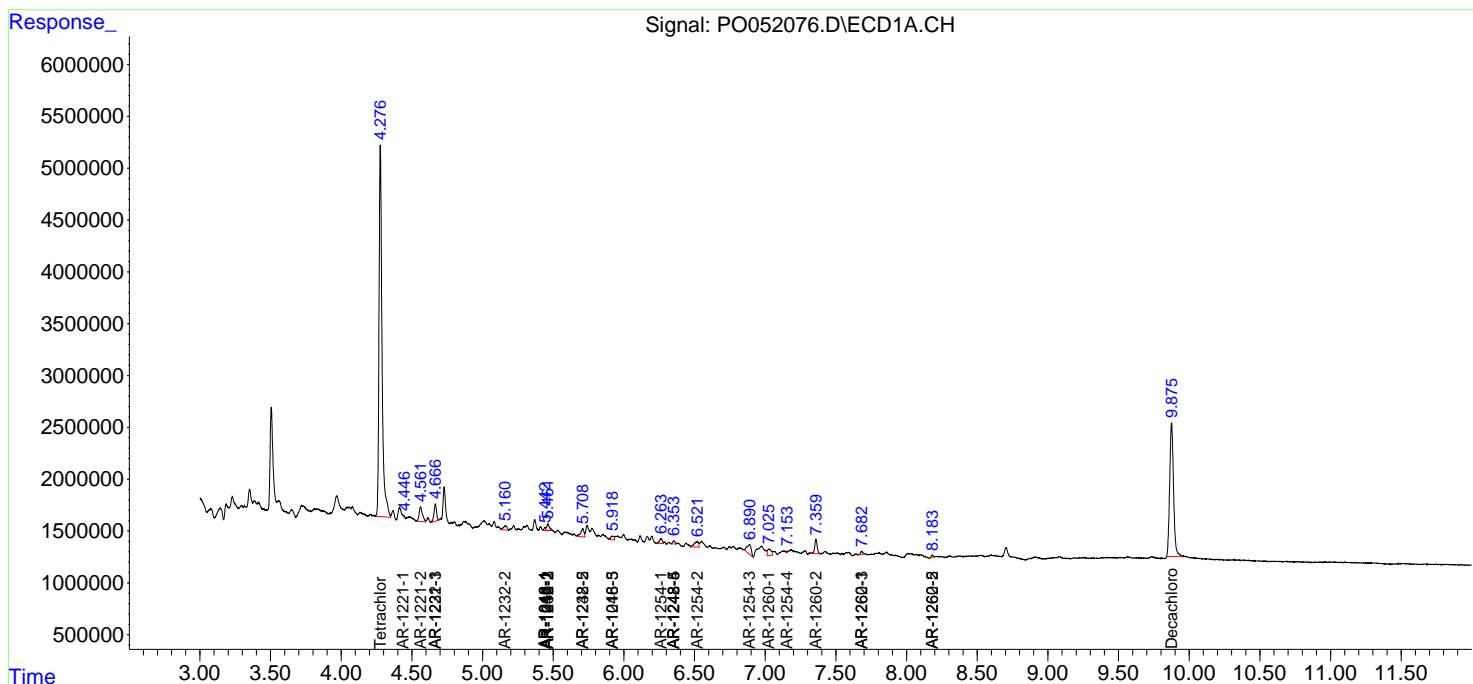
(f)=RT Delta > 1/2 Window (#)=Amounts differ by > 25% (m)=manual int.

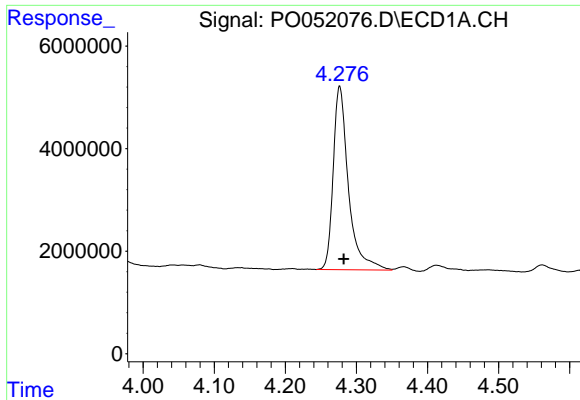
Data Path : Z:\pestpcbsrv\HPCHEM1\ECD\_O\Data\PO113018\  
 Data File : PO052076.D  
 Signal(s) : Signal #1: ECD1A.CH Signal #2: ECD2B.CH  
 Acq On : 01 Dec 2018 2:25  
 Operator : SM/SJ  
 Sample : J6128-13  
 Misc :  
 ALS Vial : 32 Sample Multiplier: 1

Instrument :  
 ECD\_O  
 ClientSampled :

Integration File signal 1: autoint1.e  
 Integration File signal 2: autoint2.e  
 Quant Time: Dec 01 03:22:28 2018  
 Quant Method : Z:\pestpcbsrv\HPCHEM1\ECD\_O\methods\PO112918.M  
 Quant Title : GC EXTRACTABLES  
 QLast Update : Fri Nov 30 03:43:16 2018  
 Response via : Initial Calibration  
 Integrator: ChemStation 6890 Scale Mode: Small noise peaks clipped

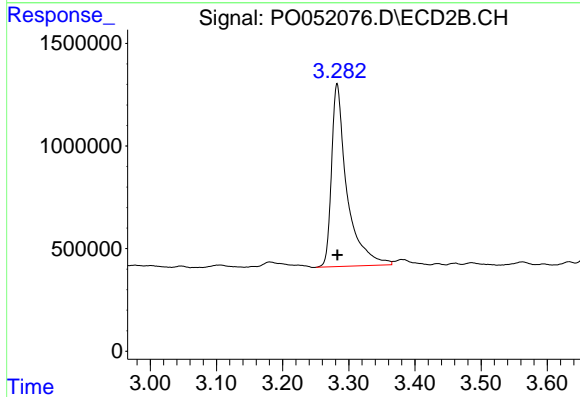
Volume Inj. : 2 µl  
 Signal #1 Phase : ZB-MR1 Signal #2 Phase: ZB-MR2  
 Signal #1 Info : 30Mx0.32mmx 0.50µ Signal #2 Info : 30M x 0.32mm x 0.25µm



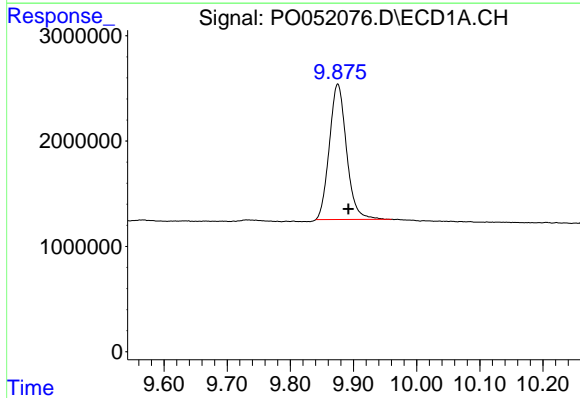


#1 Tetrachloro-m-xylene  
 R.T.: 4.276 min  
 Delta R.T.: -0.006 min  
 Response: 53276073  
 Conc: 21.59 ng/ml

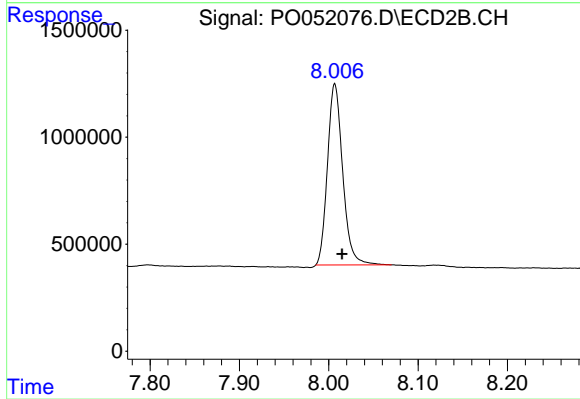
Instrument :  
 ECD\_O  
 ClientSampled :



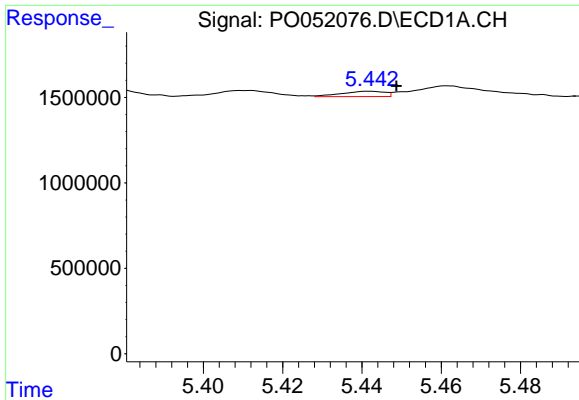
#1 Tetrachloro-m-xylene  
 R.T.: 3.282 min  
 Delta R.T.: 0.000 min  
 Response: 14446570  
 Conc: 16.14 ng/ml



#2 Decachlorobiphenyl  
 R.T.: 9.875 min  
 Delta R.T.: -0.017 min  
 Response: 24312913  
 Conc: 14.94 ng/ml



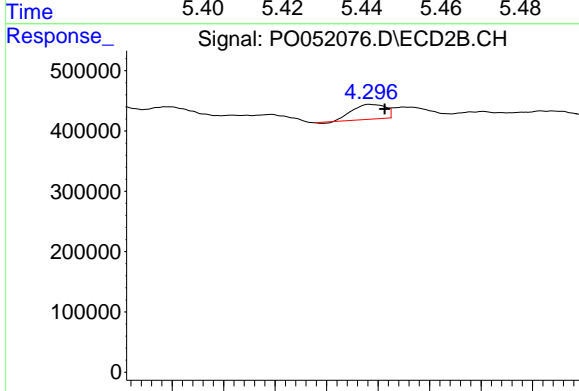
#2 Decachlorobiphenyl  
 R.T.: 8.007 min  
 Delta R.T.: -0.008 min  
 Response: 10053246  
 Conc: 14.67 ng/ml



#3 AR-1016-1

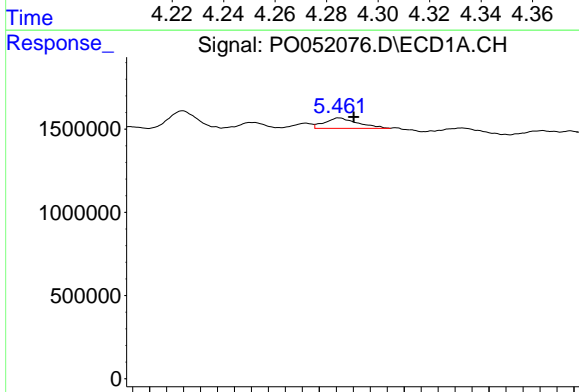
R.T.: 5.442 min  
 Delta R.T.: -0.007 min  
 Response: 235856  
 Conc: 4.23 ng/ml

Instrument :  
 ECD\_O  
 ClientSampleId :



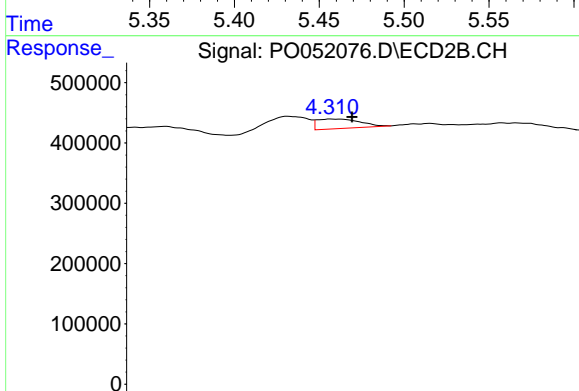
#3 AR-1016-1

R.T.: 4.297 min  
 Delta R.T.: -0.006 min  
 Response: 216682  
 Conc: 11.10 ng/ml



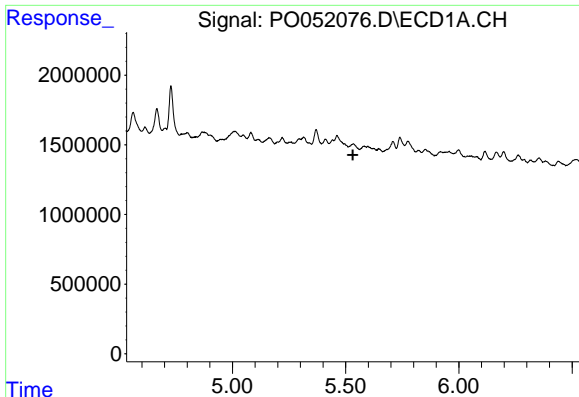
#4 AR-1016-2

R.T.: 5.462 min  
 Delta R.T.: -0.009 min  
 Response: 847248  
 Conc: 9.98 ng/ml



#4 AR-1016-2

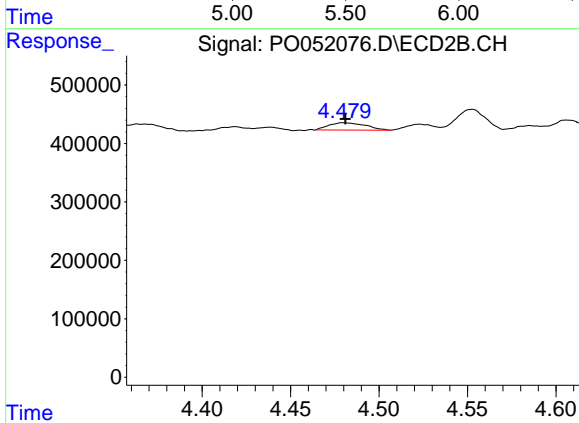
R.T.: 4.310 min  
 Delta R.T.: -0.007 min  
 Response: 147528  
 Conc: 3.35 ng/ml



#5 AR-1016-3

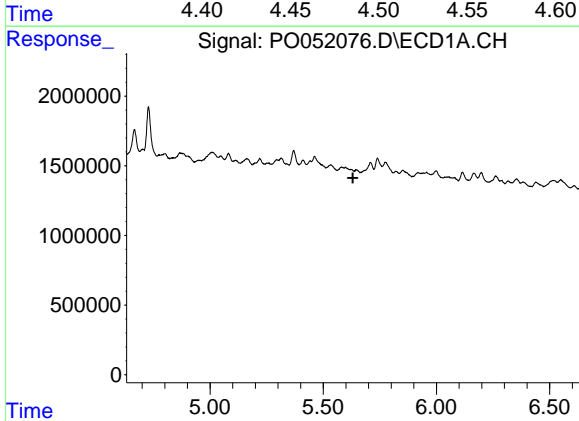
R.T.: 0.000 min  
 Exp R.T.: 5.532 min  
 Response: 0  
 Conc: N.D.

Instrument :  
 ECD\_O  
 ClientSampleId :



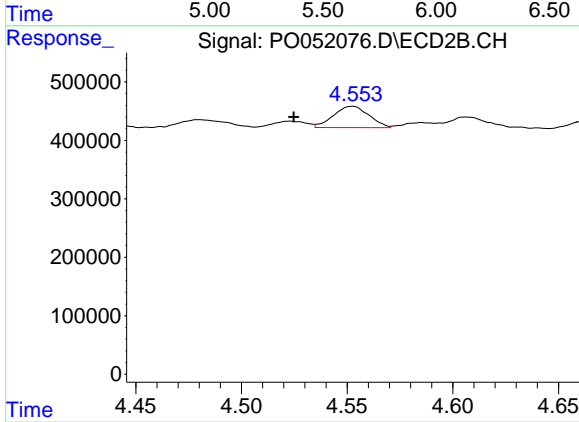
#5 AR-1016-3

R.T.: 4.479 min  
 Delta R.T.: -0.002 min  
 Response: 183889  
 Conc: 10.00 ng/ml



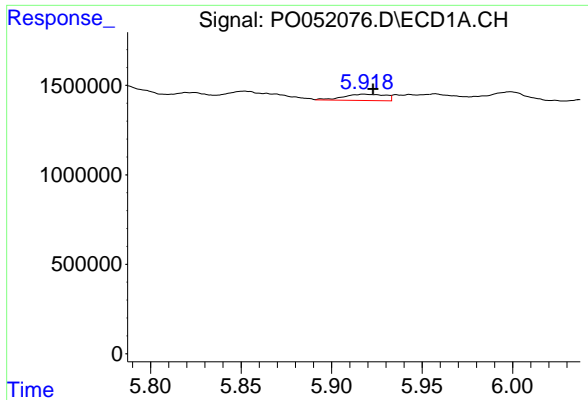
#6 AR-1016-4

R.T.: 0.000 min  
 Exp R.T.: 5.631 min  
 Response: 0  
 Conc: N.D.



#6 AR-1016-4

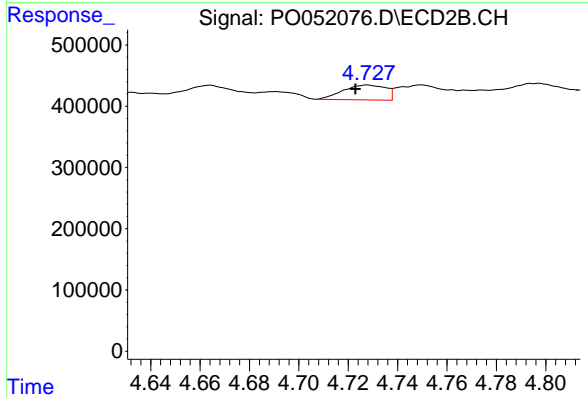
R.T.: 4.553 min  
 Delta R.T.: 0.028 min  
 Response: 425829  
 Conc: 28.58 ng/ml



#7 AR-1016-5

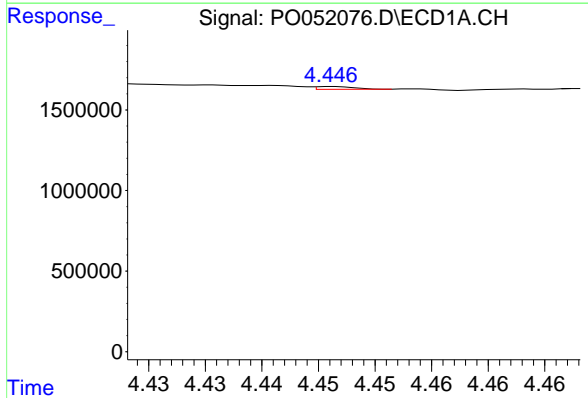
R.T.: 5.918 min  
 Delta R.T.: -0.005 min  
 Response: 563706  
 Conc: 15.49 ng/ml

Instrument :  
 ECD\_O  
 ClientSampleId :



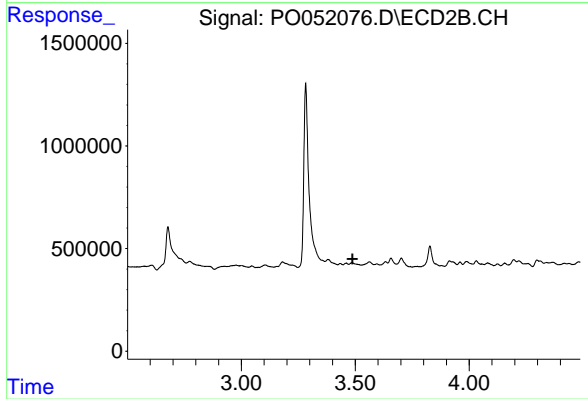
#7 AR-1016-5

R.T.: 4.728 min  
 Delta R.T.: 0.005 min  
 Response: 293965  
 Conc: 16.28 ng/ml



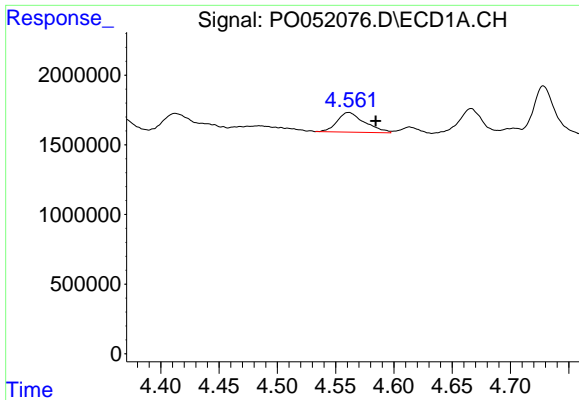
#8 AR-1221-1

R.T.: 4.446 min  
 Delta R.T.: -0.051 min  
 Response: 41097  
 Conc: 2.06 ng/ml



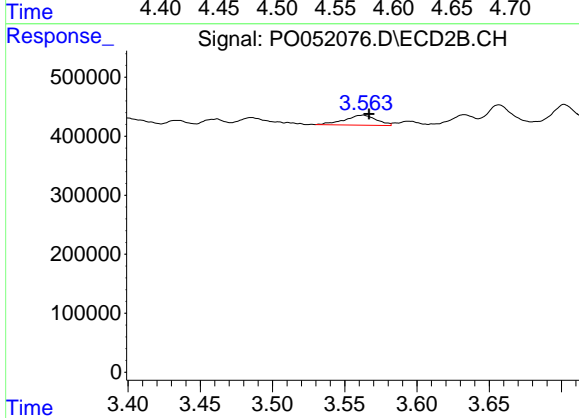
#8 AR-1221-1

R.T.: 0.000 min  
 Exp R.T. : 3.488 min  
 Response: 0  
 Conc: N.D.

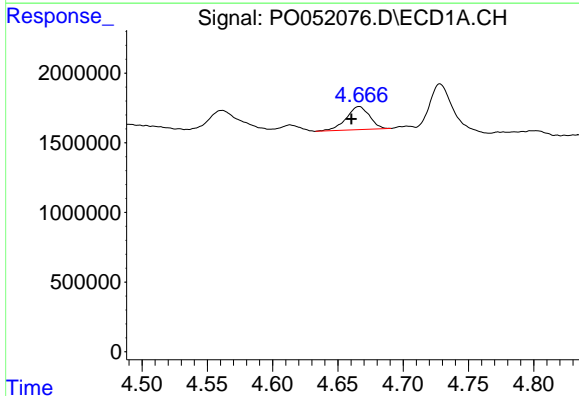


#9 AR-1221-2  
 R.T.: 4.562 min  
 Delta R.T.: -0.023 min  
 Response: 2327456  
 Conc: 163.00 ng/ml

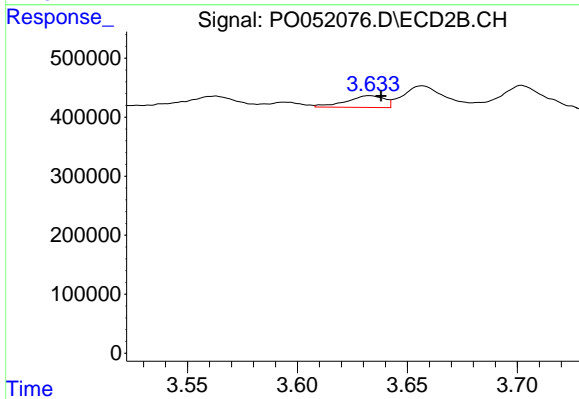
Instrument :  
 ECD\_O  
 ClientSampleId :



#9 AR-1221-2  
 R.T.: 3.563 min  
 Delta R.T.: -0.004 min  
 Response: 261187  
 Conc: 48.53 ng/ml

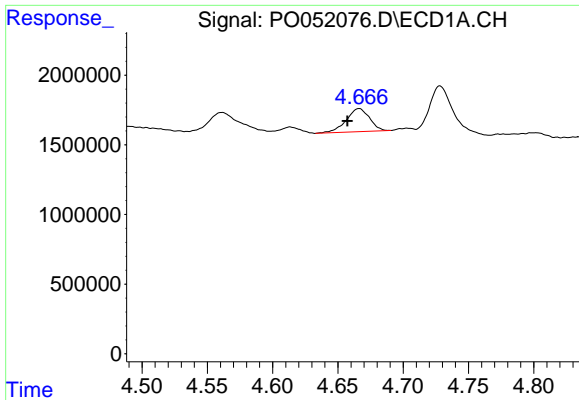


#10 AR-1221-3  
 R.T.: 4.666 min  
 Delta R.T.: 0.006 min  
 Response: 2057799  
 Conc: 45.55 ng/ml



#10 AR-1221-3  
 R.T.: 3.633 min  
 Delta R.T.: -0.005 min  
 Response: 240674  
 Conc: 13.85 ng/ml

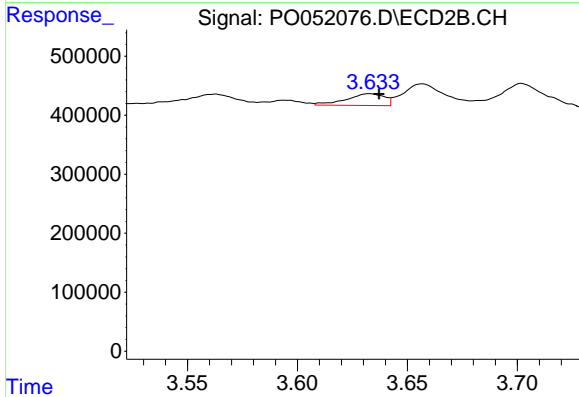




#11 AR-1232-1

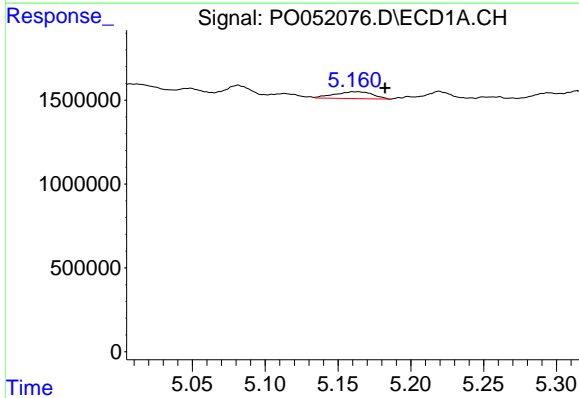
R.T.: 4.666 min  
 Delta R.T.: 0.009 min  
 Response: 2057799  
 Conc: 55.65 ng/ml

Instrument :  
 ECD\_O  
 ClientSampled :



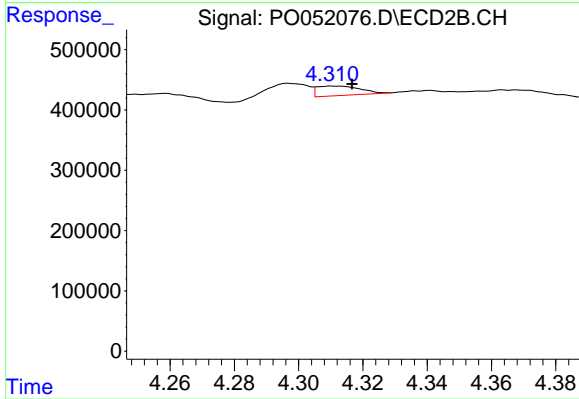
#11 AR-1232-1

R.T.: 3.633 min  
 Delta R.T.: -0.004 min  
 Response: 240674  
 Conc: 17.11 ng/ml



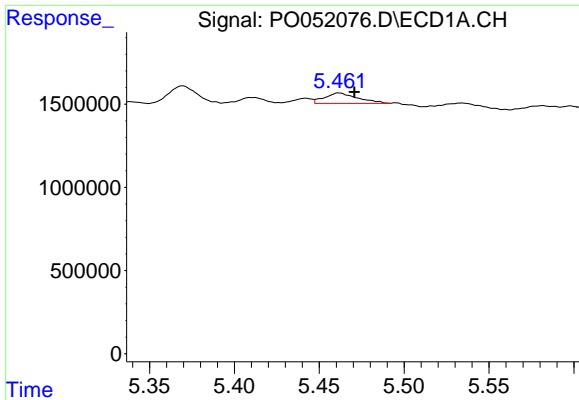
#12 AR-1232-2

R.T.: 5.160 min  
 Delta R.T.: -0.022 min  
 Response: 736131  
 Conc: 44.00 ng/ml



#12 AR-1232-2

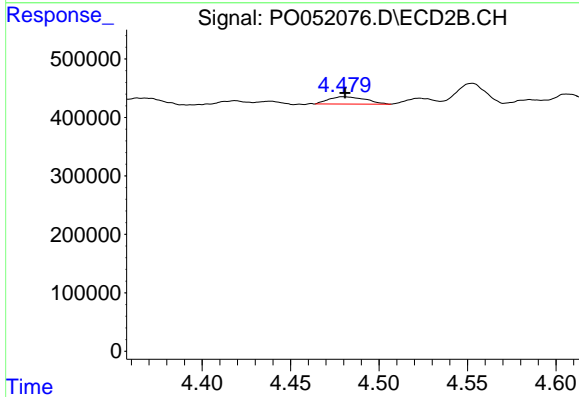
R.T.: 4.310 min  
 Delta R.T.: -0.007 min  
 Response: 147528  
 Conc: 8.54 ng/ml



#13 AR-1232-3

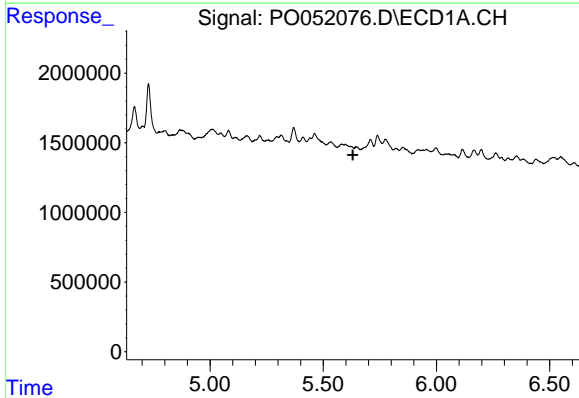
R.T.: 5.462 min  
 Delta R.T.: -0.009 min  
 Response: 847248  
 Conc: 25.32 ng/ml

Instrument :  
 ECD\_O  
 ClientSampled :



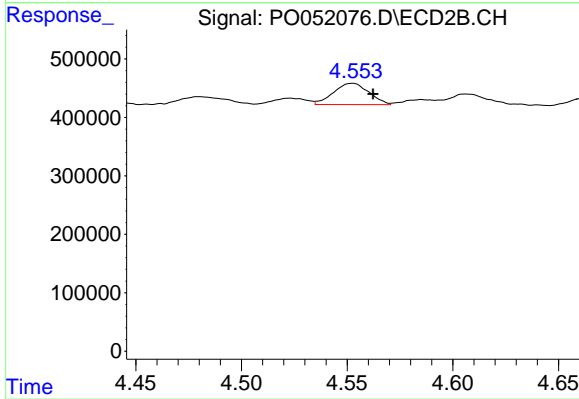
#13 AR-1232-3

R.T.: 4.479 min  
 Delta R.T.: -0.001 min  
 Response: 183889  
 Conc: 25.72 ng/ml



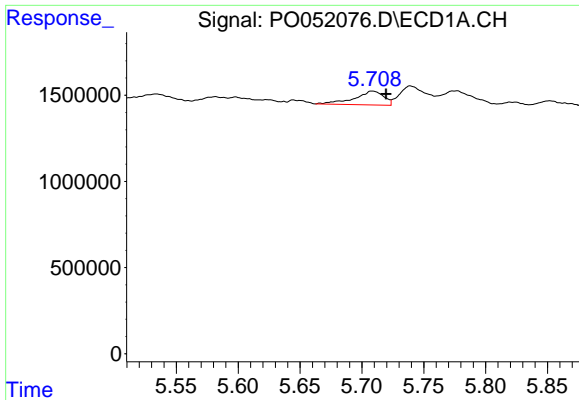
#14 AR-1232-4

R.T.: 0.000 min  
 Exp R.T. : 5.631 min  
 Response: 0  
 Conc: N.D.



#14 AR-1232-4

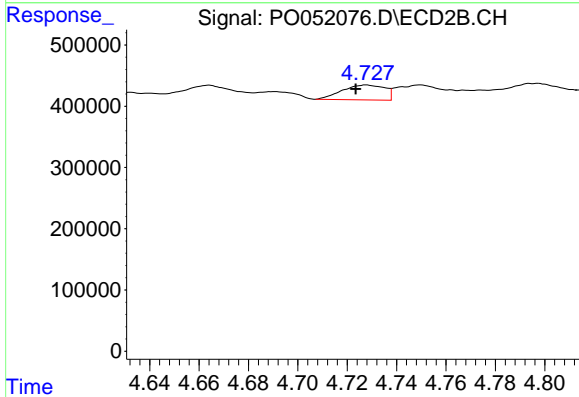
R.T.: 4.553 min  
 Delta R.T.: -0.009 min  
 Response: 425829  
 Conc: 71.18 ng/ml



#15 AR-1232-5

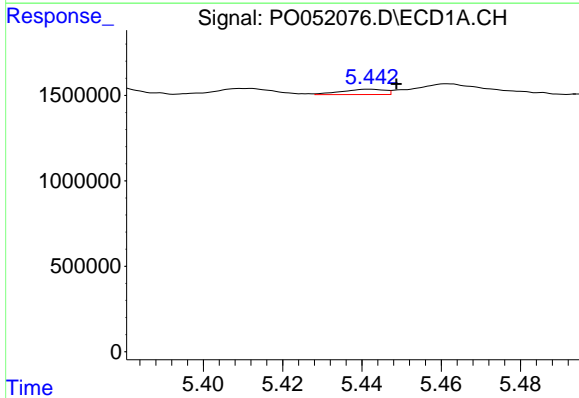
R.T.: 5.708 min  
 Delta R.T.: -0.011 min  
 Response: 1320840  
 Conc: 123.59 ng/ml

Instrument :  
 ECD\_O  
 ClientSampleId :



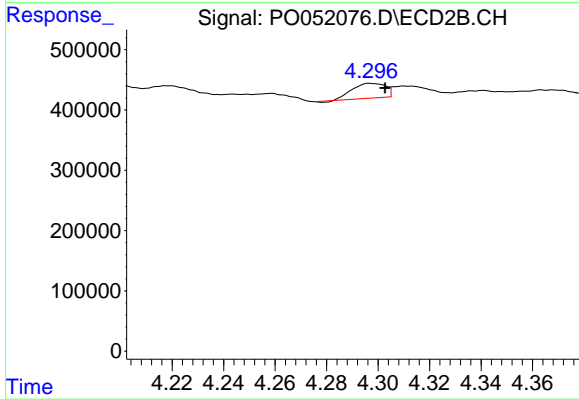
#15 AR-1232-5

R.T.: 4.728 min  
 Delta R.T.: 0.004 min  
 Response: 293965  
 Conc: 43.76 ng/ml



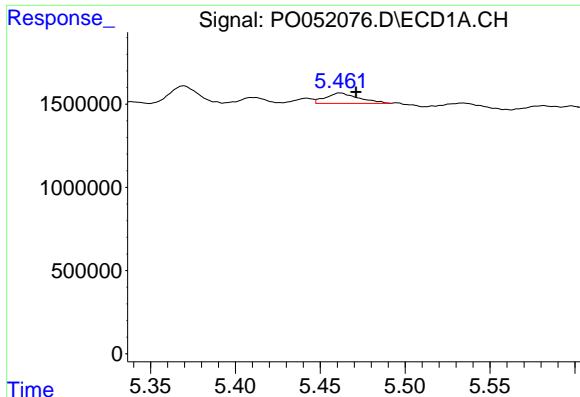
#16 AR-1242-1

R.T.: 5.442 min  
 Delta R.T.: -0.007 min  
 Response: 235856  
 Conc: 5.58 ng/ml



#16 AR-1242-1

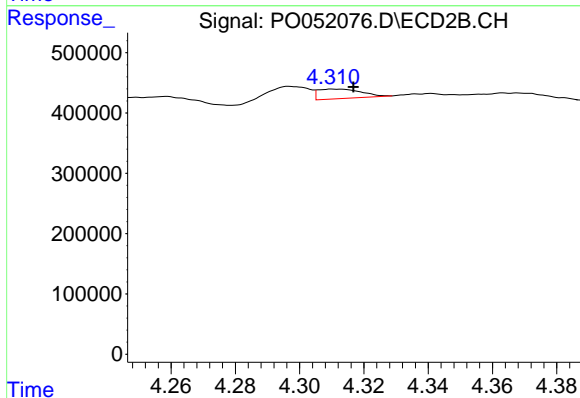
R.T.: 4.297 min  
 Delta R.T.: -0.006 min  
 Response: 216682  
 Conc: 14.73 ng/ml



#17 AR-1242-2

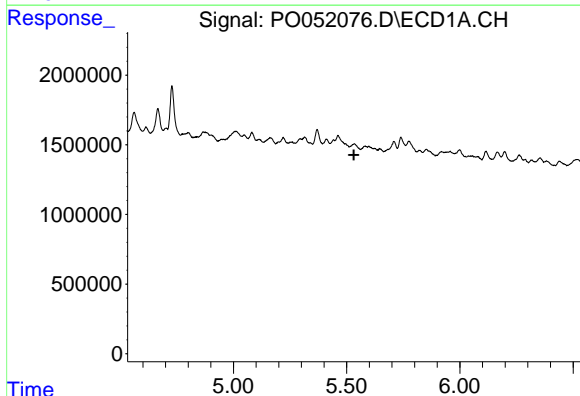
R.T.: 5.462 min  
 Delta R.T.: -0.009 min  
 Response: 847248  
 Conc: 13.17 ng/ml

Instrument :  
 ECD\_O  
 ClientSampleId :



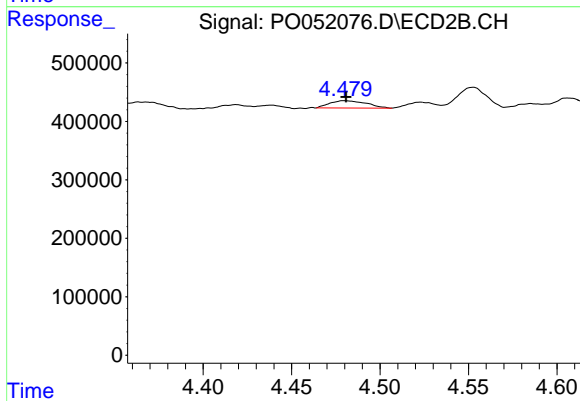
#17 AR-1242-2

R.T.: 4.310 min  
 Delta R.T.: -0.007 min  
 Response: 147528  
 Conc: 4.54 ng/ml



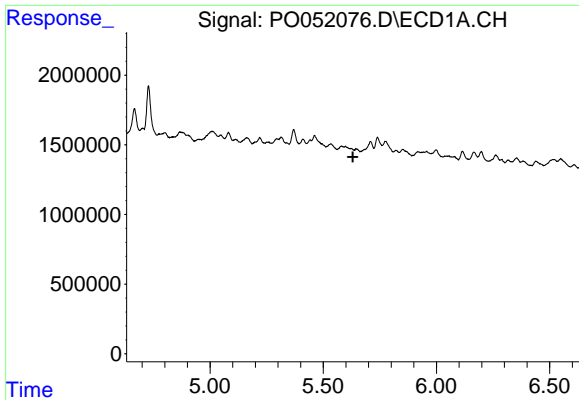
#18 AR-1242-3

R.T.: 0.000 min  
 Exp R.T. : 5.532 min  
 Response: 0  
 Conc: N.D.



#18 AR-1242-3

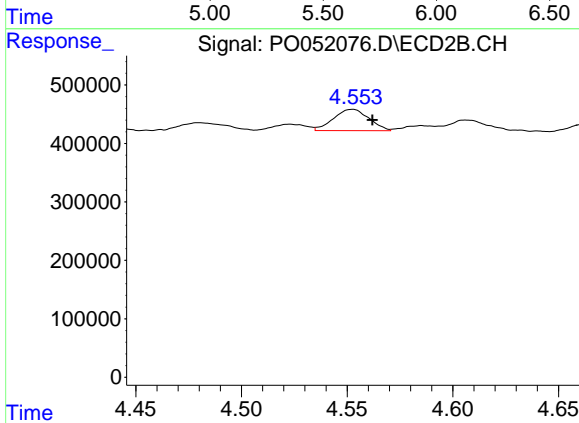
R.T.: 4.479 min  
 Delta R.T.: -0.001 min  
 Response: 183889  
 Conc: 13.45 ng/ml



#19 AR-1242-4

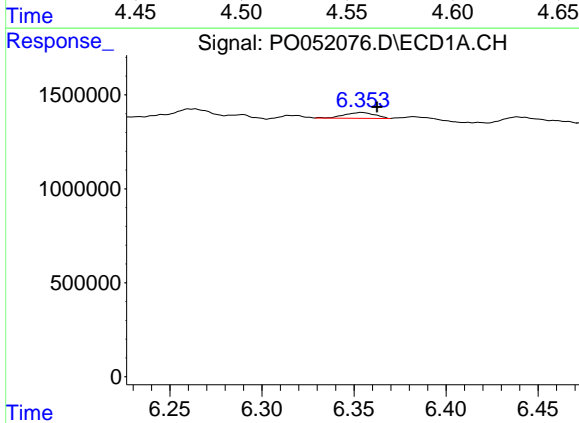
R.T.: 0.000 min  
 Exp R.T.: 5.631 min  
 Response: 0  
 Conc: N.D.

Instrument :  
 ECD\_O  
 ClientSampleId :



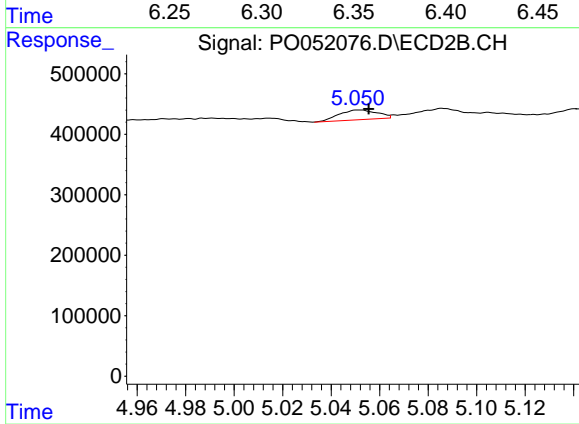
#19 AR-1242-4

R.T.: 4.553 min  
 Delta R.T.: -0.009 min  
 Response: 425829  
 Conc: 33.73 ng/ml



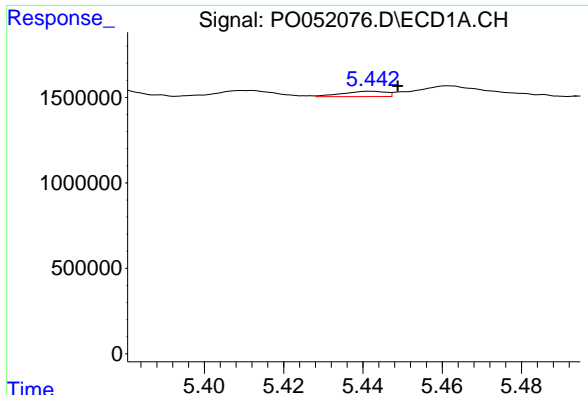
#20 AR-1242-5

R.T.: 6.354 min  
 Delta R.T.: -0.008 min  
 Response: 359140  
 Conc: 12.09 ng/ml



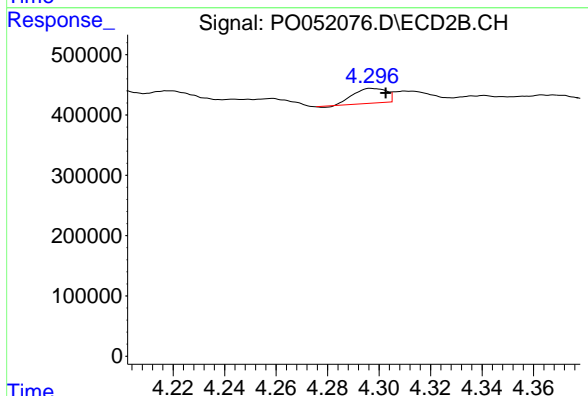
#20 AR-1242-5

R.T.: 5.051 min  
 Delta R.T.: -0.004 min  
 Response: 175451  
 Conc: 10.71 ng/ml

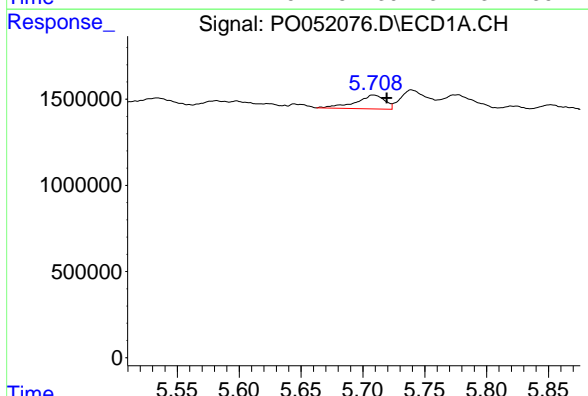


#21 AR-1248-1  
 R.T.: 5.442 min  
 Delta R.T.: -0.007 min  
 Response: 235856  
 Conc: 7.60 ng/ml

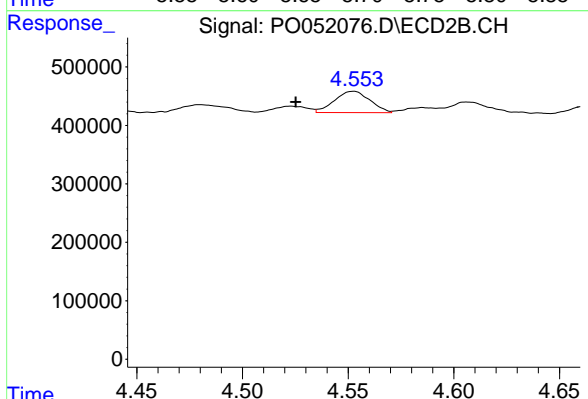
Instrument :  
 ECD\_O  
 ClientSampleId :



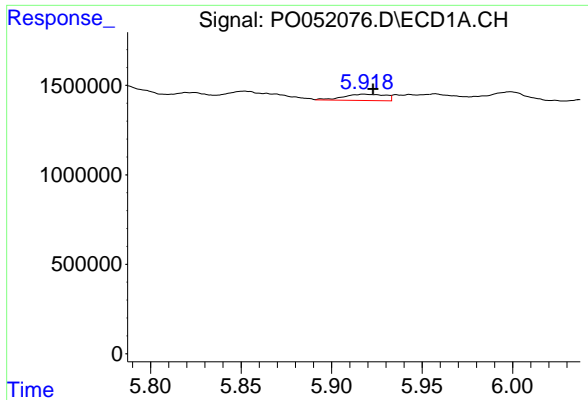
#21 AR-1248-1  
 R.T.: 4.297 min  
 Delta R.T.: -0.006 min  
 Response: 216682  
 Conc: 17.93 ng/ml



#22 AR-1248-2  
 R.T.: 5.708 min  
 Delta R.T.: -0.011 min  
 Response: 1320840  
 Conc: 32.92 ng/ml



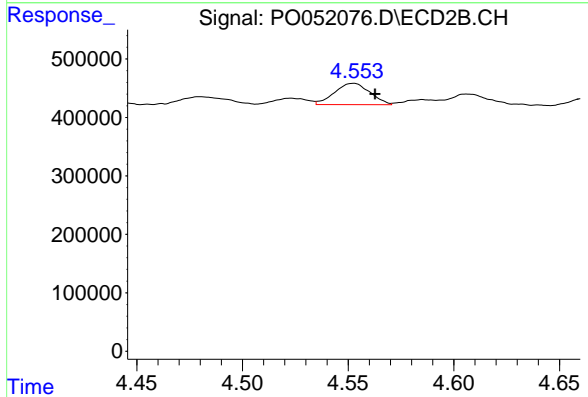
#22 AR-1248-2  
 R.T.: 4.553 min  
 Delta R.T.: 0.028 min  
 Response: 425829  
 Conc: 23.88 ng/ml



#23 AR-1248-3

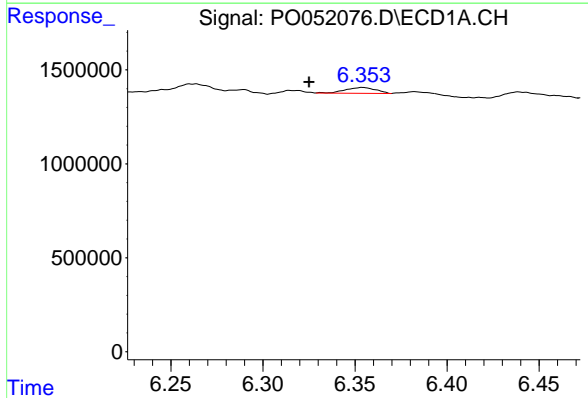
R.T.: 5.918 min  
 Delta R.T.: -0.005 min  
 Response: 563706  
 Conc: 12.57 ng/ml

Instrument :  
 ECD\_O  
 ClientSampleId :



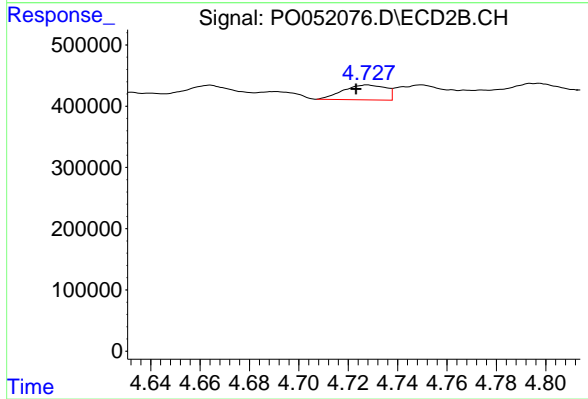
#23 AR-1248-3

R.T.: 4.553 min  
 Delta R.T.: -0.010 min  
 Response: 425829  
 Conc: 23.79 ng/ml



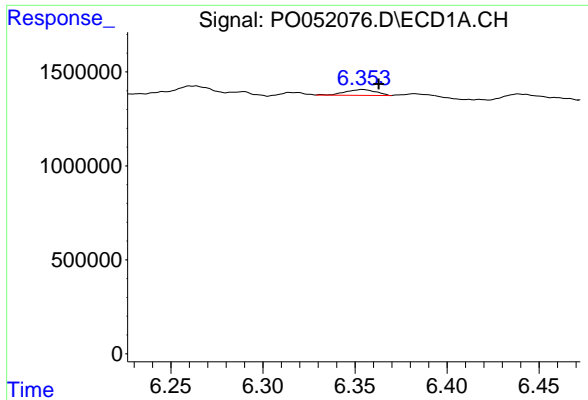
#24 AR-1248-4

R.T.: 6.354 min  
 Delta R.T.: 0.029 min  
 Response: 359140  
 Conc: 7.27 ng/ml



#24 AR-1248-4

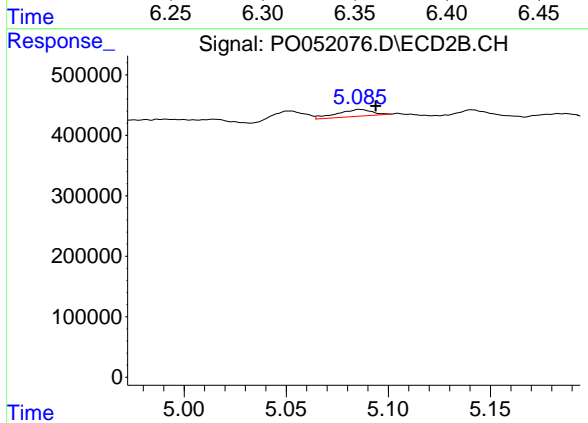
R.T.: 4.728 min  
 Delta R.T.: 0.005 min  
 Response: 293965  
 Conc: 13.56 ng/ml



#25 AR-1248-5

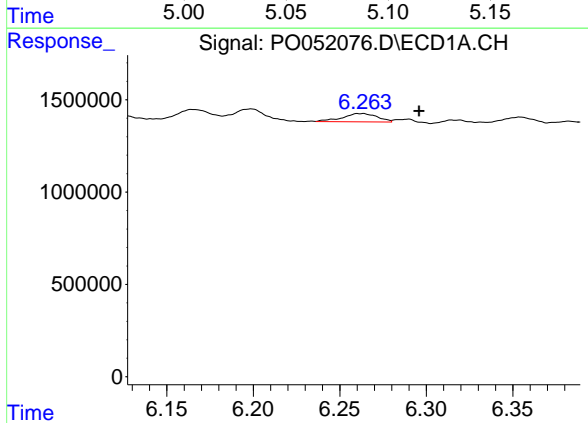
R.T.: 6.354 min  
 Delta R.T.: -0.009 min  
 Response: 359140  
 Conc: 7.66 ng/ml

Instrument :  
 ECD\_O  
 ClientSampled :



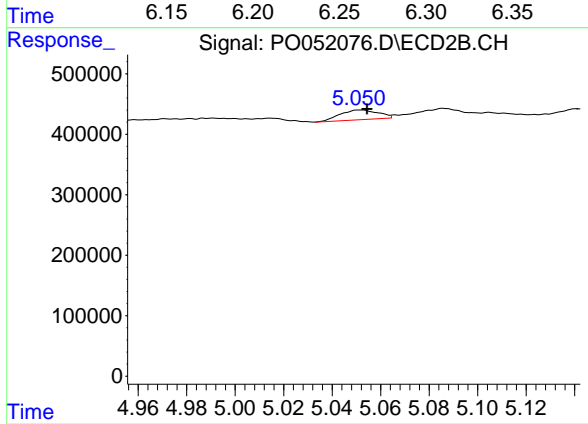
#25 AR-1248-5

R.T.: 5.086 min  
 Delta R.T.: -0.008 min  
 Response: 136977  
 Conc: 6.39 ng/ml



#26 AR-1254-1

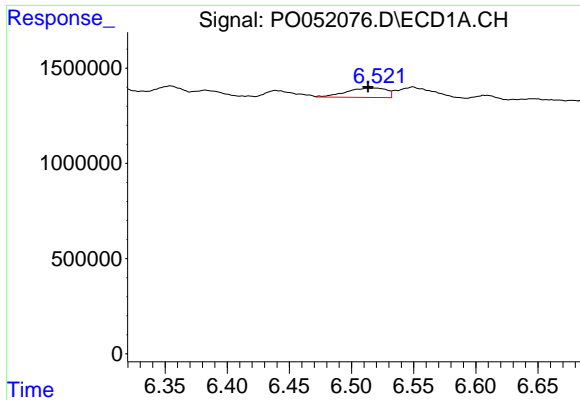
R.T.: 6.264 min  
 Delta R.T.: -0.032 min  
 Response: 630519  
 Conc: 11.71 ng/ml



#26 AR-1254-1

R.T.: 5.051 min  
 Delta R.T.: -0.003 min  
 Response: 175451  
 Conc: 4.89 ng/ml

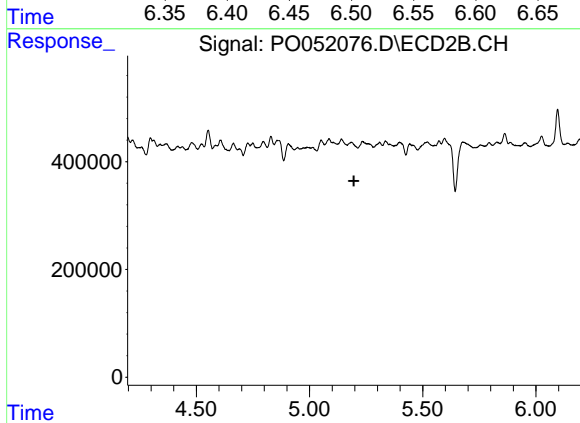




#27 AR-1254-2

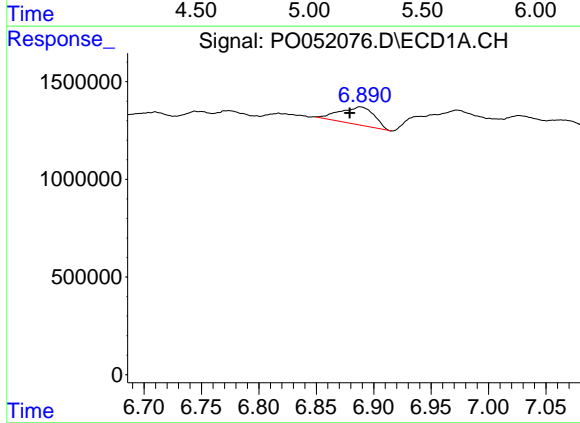
R.T.: 6.519 min  
 Delta R.T.: 0.006 min  
 Response: 1117694  
 Conc: 13.23 ng/ml

Instrument :  
 ECD\_O  
 ClientSampleId :



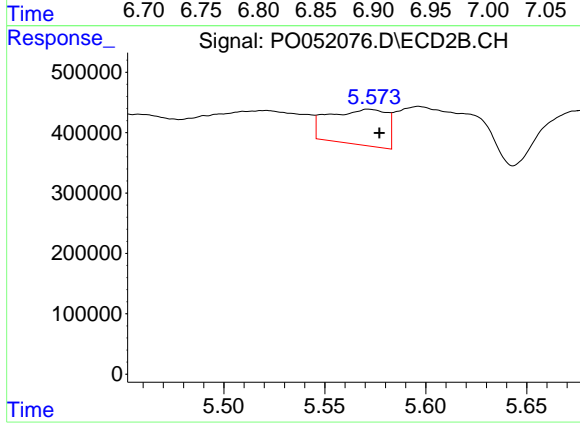
#27 AR-1254-2

R.T.: 0.000 min  
 Exp R.T. : 5.196 min  
 Response: 0  
 Conc: N.D.



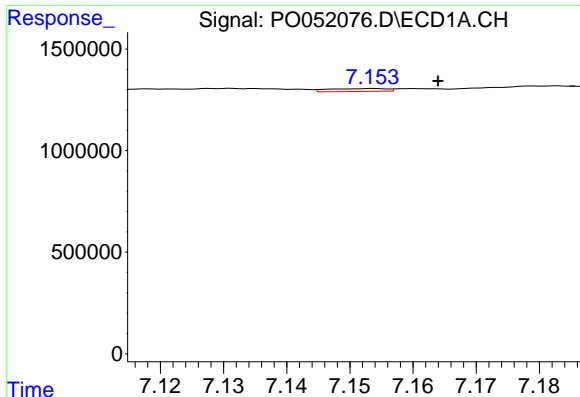
#28 AR-1254-3

R.T.: 6.888 min  
 Delta R.T.: 0.009 min  
 Response: 1899018  
 Conc: 20.92 ng/ml



#28 AR-1254-3

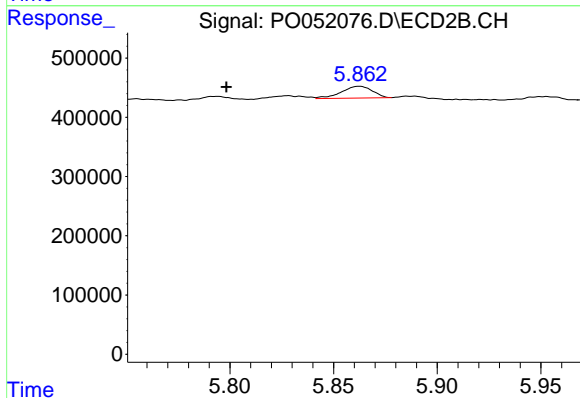
R.T.: 5.571 min  
 Delta R.T.: -0.006 min  
 Response: 1164731  
 Conc: 23.57 ng/ml



#29 AR-1254-4

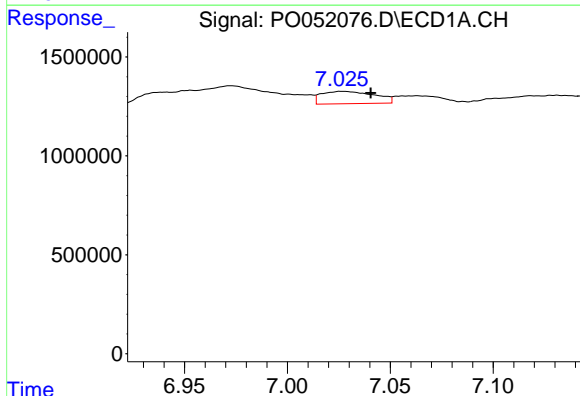
R.T.: 7.154 min  
 Delta R.T.: -0.010 min  
 Response: 91831  
 Conc: 1.31 ng/ml

Instrument :  
 ECD\_O  
 ClientSampleId :



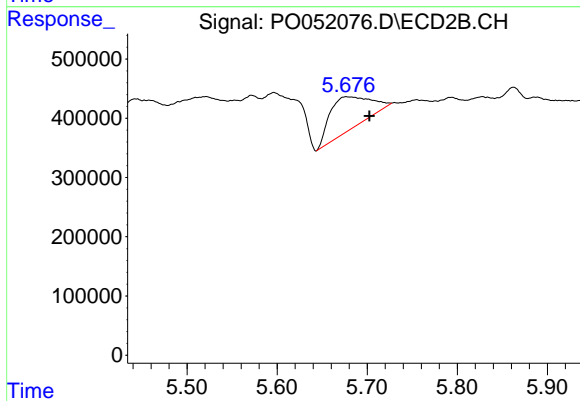
#29 AR-1254-4

R.T.: 5.862 min  
 Delta R.T.: 0.064 min  
 Response: 205163  
 Conc: 6.67 ng/ml



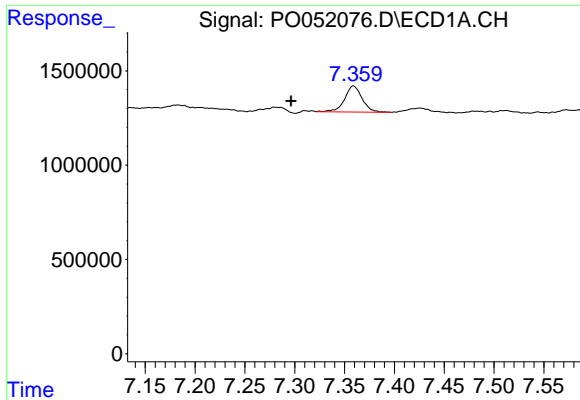
#31 AR-1260-1

R.T.: 7.026 min  
 Delta R.T.: -0.014 min  
 Response: 1121274  
 Conc: 15.92 ng/ml



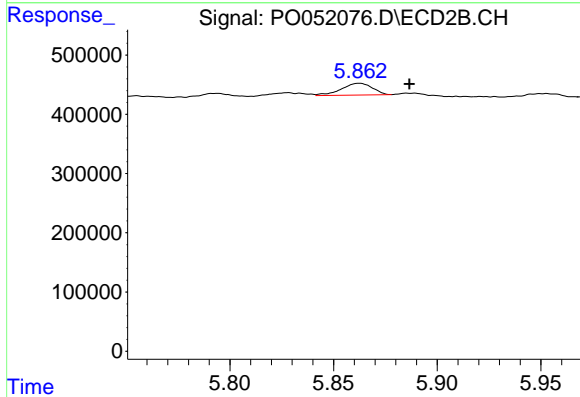
#31 AR-1260-1

R.T.: 5.676 min  
 Delta R.T.: -0.026 min  
 Response: 1728697  
 Conc: 49.29 ng/ml

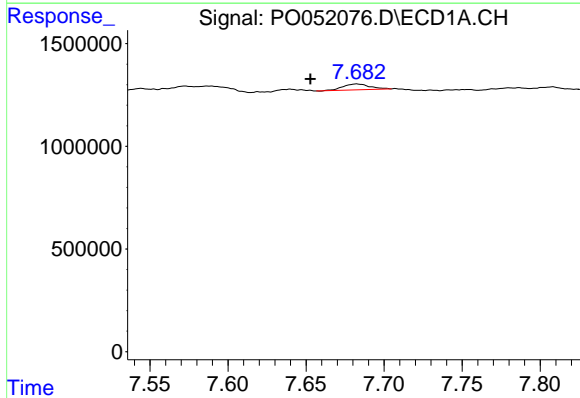


#32 AR-1260-2  
 R.T.: 7.359 min  
 Delta R.T.: 0.063 min  
 Response: 1688515  
 Conc: 18.15 ng/ml

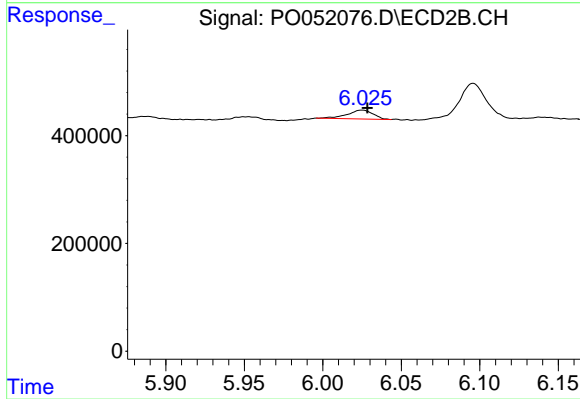
Instrument :  
 ECD\_O  
 ClientSampleId :



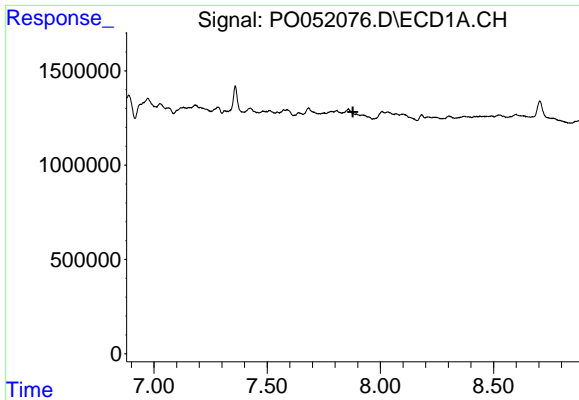
#32 AR-1260-2  
 R.T.: 5.862 min  
 Delta R.T.: -0.024 min  
 Response: 205163  
 Conc: 4.72 ng/ml



#33 AR-1260-3  
 R.T.: 7.682 min  
 Delta R.T.: 0.030 min  
 Response: 342989  
 Conc: 5.24 ng/ml



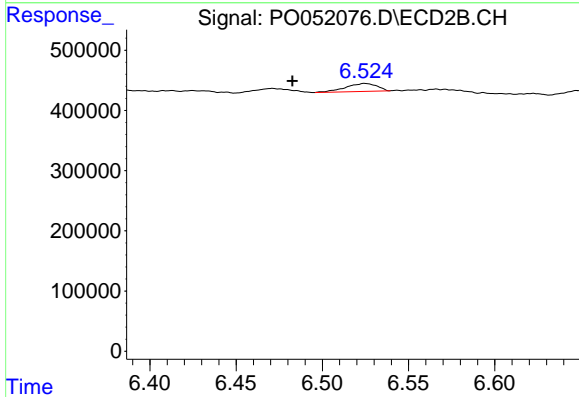
#33 AR-1260-3  
 R.T.: 6.025 min  
 Delta R.T.: -0.003 min  
 Response: 187740  
 Conc: 4.67 ng/ml



#34 AR-1260-4

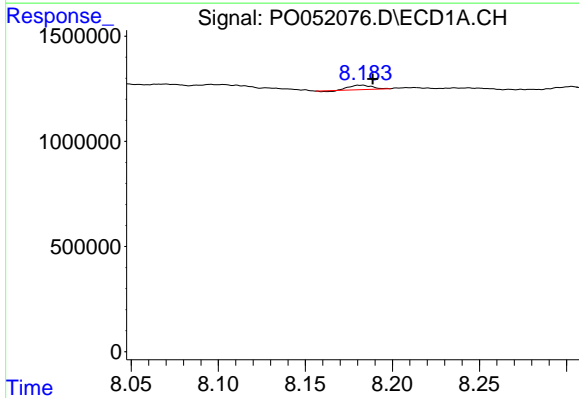
R.T.: 0.000 min  
 Exp R.T.: 7.879 min  
 Response: 0  
 Conc: N.D.

Instrument :  
 ECD\_O  
 ClientSampleId :



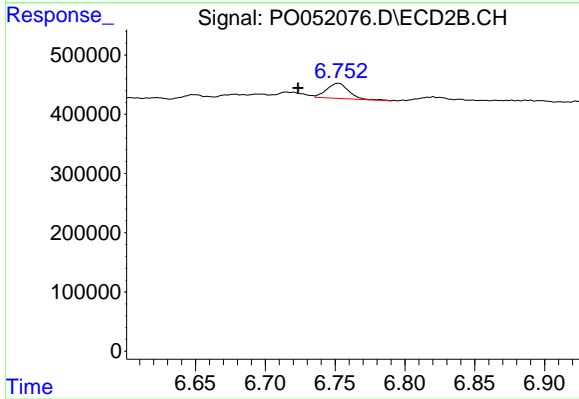
#34 AR-1260-4

R.T.: 6.524 min  
 Delta R.T.: 0.042 min  
 Response: 167766  
 Conc: 6.06 ng/ml



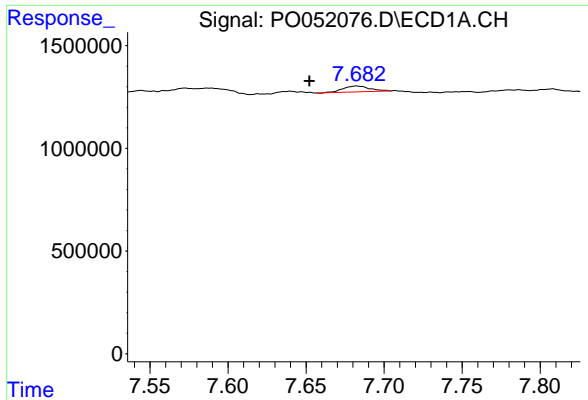
#35 AR-1260-5

R.T.: 8.183 min  
 Delta R.T.: -0.006 min  
 Response: 178556  
 Conc: 1.08 ng/ml



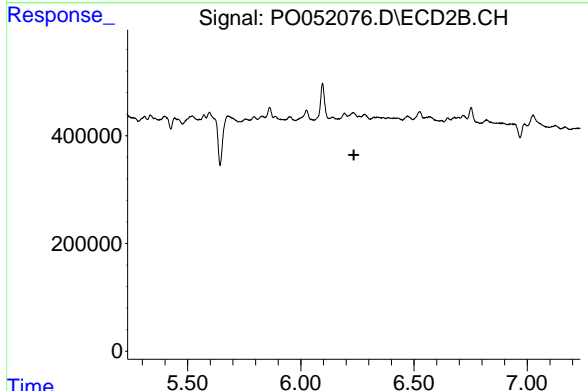
#35 AR-1260-5

R.T.: 6.752 min  
 Delta R.T.: 0.029 min  
 Response: 281711  
 Conc: 3.91 ng/ml

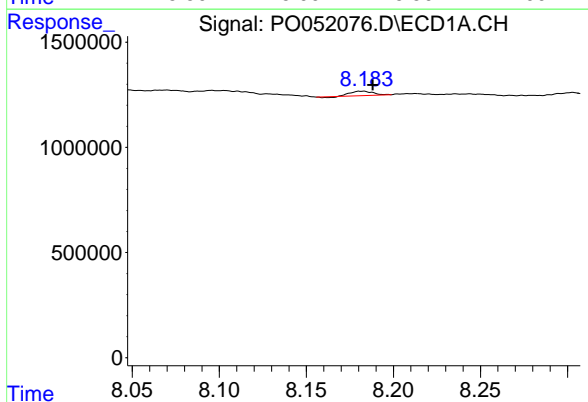


#36 AR-1262-1  
 R.T.: 7.682 min  
 Delta R.T.: 0.030 min  
 Response: 342989  
 Conc: 3.28 ng/ml

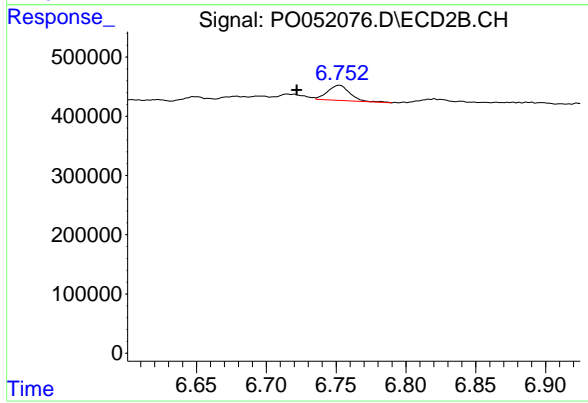
Instrument :  
 ECD\_O  
 ClientSampleId :



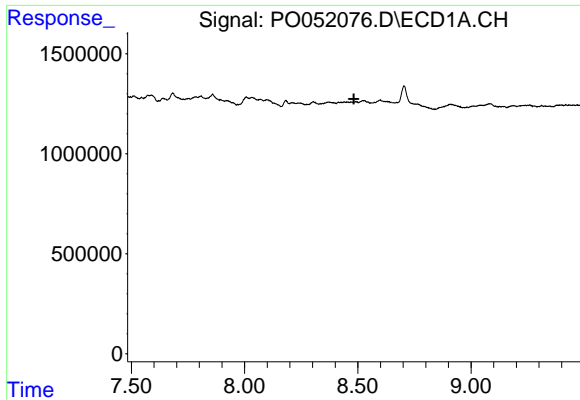
#36 AR-1262-1  
 R.T.: 0.000 min  
 Exp R.T. : 6.235 min  
 Response: 0  
 Conc: N.D.



#37 AR-1262-2  
 R.T.: 8.183 min  
 Delta R.T.: -0.005 min  
 Response: 178556  
 Conc: 0.91 ng/ml

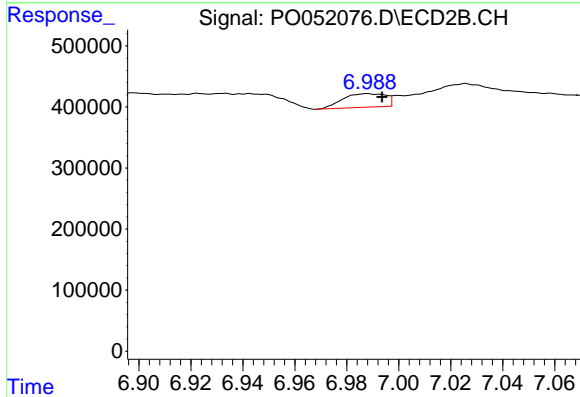


#37 AR-1262-2  
 R.T.: 6.752 min  
 Delta R.T.: 0.031 min  
 Response: 281711  
 Conc: 3.40 ng/ml

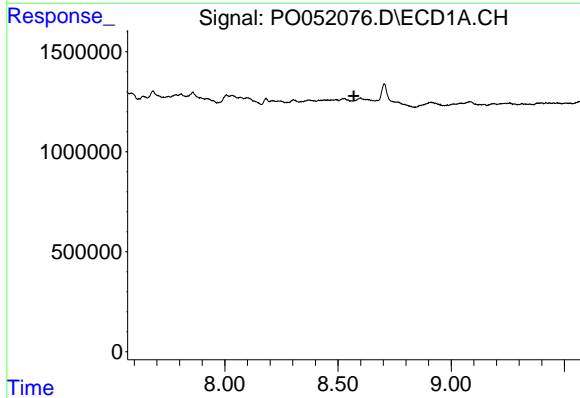


#38 AR-1262-3  
 R.T.: 0.000 min  
 Exp R.T.: 8.483 min  
 Response: 0  
 Conc: N.D.

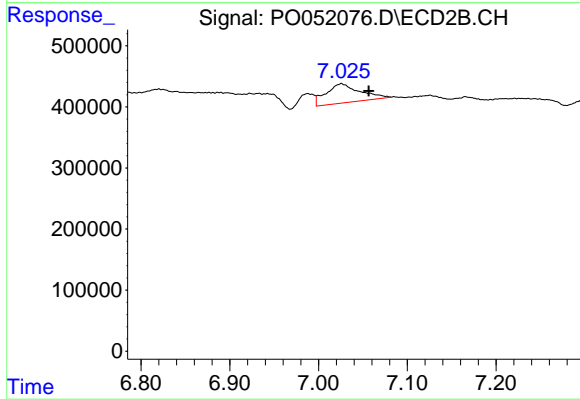
Instrument :  
 ECD\_O  
 ClientSampled :



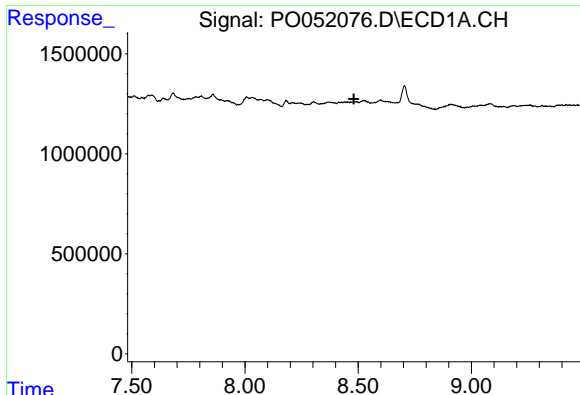
#38 AR-1262-3  
 R.T.: 6.988 min  
 Delta R.T.: -0.006 min  
 Response: 256459  
 Conc: 7.72 ng/ml



#39 AR-1262-4  
 R.T.: 0.000 min  
 Exp R.T.: 8.571 min  
 Response: 0  
 Conc: N.D.



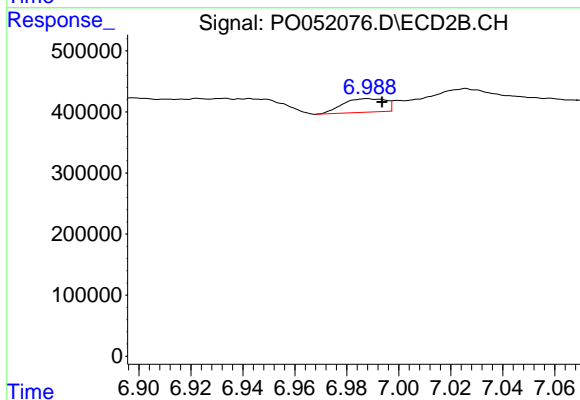
#39 AR-1262-4  
 R.T.: 7.026 min  
 Delta R.T.: -0.031 min  
 Response: 836873  
 Conc: 13.68 ng/ml



#41 AR-1268-1

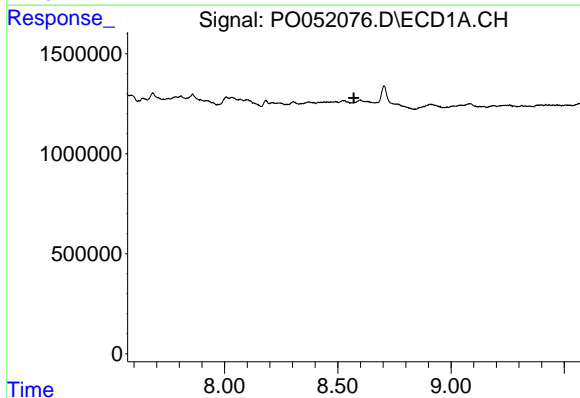
R.T.: 0.000 min  
 Exp R.T. : 8.481 min  
 Response: 0  
 Conc: N.D.

Instrument :  
 ECD\_O  
 ClientSampleId :



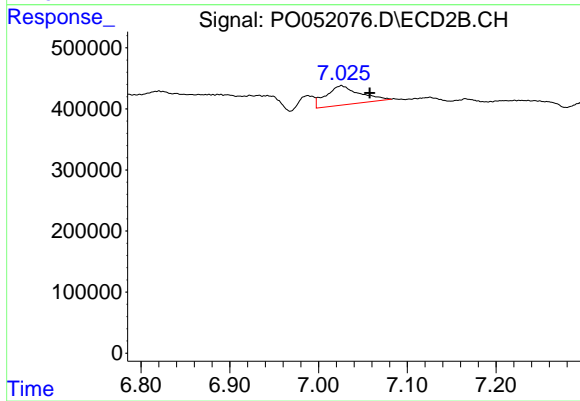
#41 AR-1268-1

R.T.: 6.988 min  
 Delta R.T.: -0.006 min  
 Response: 256459  
 Conc: 2.23 ng/ml



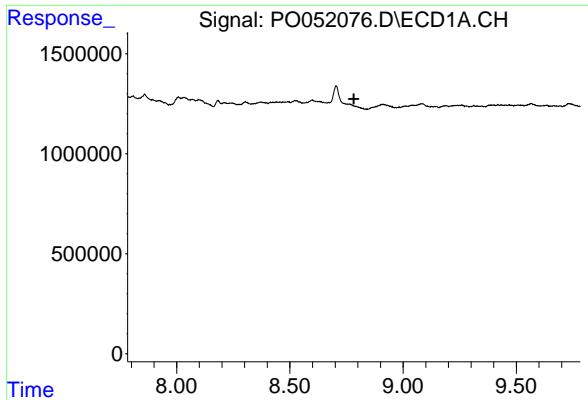
#42 AR-1268-2

R.T.: 0.000 min  
 Exp R.T. : 8.571 min  
 Response: 0  
 Conc: N.D.



#42 AR-1268-2

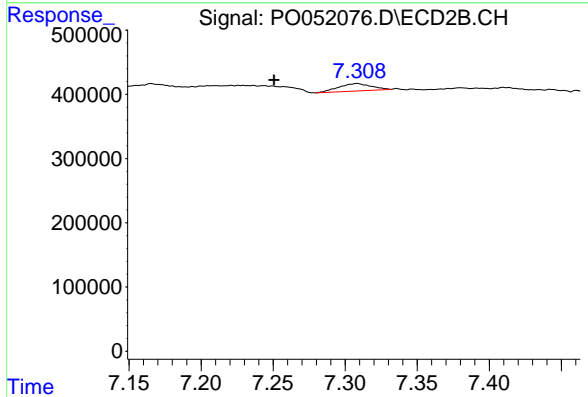
R.T.: 7.026 min  
 Delta R.T.: -0.032 min  
 Response: 836873  
 Conc: 7.67 ng/ml



#43 AR-1268-3

R.T.: 0.000 min  
 Exp R.T.: 8.783 min  
 Response: 0  
 Conc: N.D.

Instrument :  
 ECD\_O  
 ClientSampleId :



#43 AR-1268-3

R.T.: 7.308 min  
 Delta R.T.: 0.058 min  
 Response: 184866  
 Conc: 1.91 ng/ml