

Data Path : Z:\pestpcbsrv\HPCHEM1\ECD_0\Data\PO113018\
 Data File : PO052092.D
 Signal(s) : Signal #1: ECD1A.CH Signal #2: ECD2B.CH
 Acq On : 01 Dec 2018 6:55
 Operator : SM/SJ
 Sample : J6129-10
 Misc :
 ALS Vial : 46 Sample Multiplier: 1

Instrument :
 ECD_O
 ClientSampled :

Integration File signal 1: autoint1.e
 Integration File signal 2: autoint2.e
 Quant Time: Dec 02 23:54:19 2018
 Quant Method : Z:\pestpcbsrv\HPCHEM1\ECD_0\methods\PO112918.M
 Quant Title : GC EXTRACTABLES
 QLast Update : Fri Nov 30 03:43:16 2018
 Response via : Initial Calibration
 Integrator: ChemStation 6890 Scale Mode: Small noise peaks clipped

Volume Inj. : 2 µl
 Signal #1 Phase : ZB-MR1 Signal #2 Phase: ZB-MR2
 Signal #1 Info : 30Mx0.32mmx 0.50µ Signal #2 Info : 30M x 0.32mm x 0.25µm

Compound	RT#1	RT#2	Resp#1	Resp#2	ng/ml	ng/ml
System Monitoring Compounds						
1) SA Tetrachlo...	4.275	3.281	47129176	12189600	19.095	13.617 #
2) SA Decachlor...	9.873	8.005	20186940	8254250	12.402	12.044
Target Compounds						
3) L1 AR-1016-1	5.440	4.296	988166	300414	17.724	15.391
4) L1 AR-1016-2	5.461	4.312	2215867	189792	26.096	4.308 #
5) L1 AR-1016-3	5.532	4.498	417075	545935	8.536	29.681 #
6) L1 AR-1016-4	0.000	4.518	0	287799	N.D.	19.316 #
7) L1 AR-1016-5	5.913	4.726	286895	536007	7.882	29.680 #
8) L2 AR-1221-1	4.441	3.556	361515	340000	18.091	47.418 #
9) L2 AR-1221-2	4.562	3.556	1878764	340000	131.579	63.169 #
10) L2 AR-1221-3	4.664	3.633	3952746	555702	87.500	31.990 #
11) L3 AR-1232-1	4.664	3.633	3952746	555702	106.902	39.505 #
12) L3 AR-1232-2	5.217	4.312	1640949	189792	98.079	10.993 #
13) L3 AR-1232-3	5.461	4.498	2215867	545935	66.227	76.348
14) L3 AR-1232-4	0.000	4.551	0	686849	N.D.	114.804 #
15) L3 AR-1232-5	5.707	4.726	738936	536007	69.143	79.786
16) L4 AR-1242-1	5.440	4.296	988166	300414	23.386	20.427
17) L4 AR-1242-2	5.461	4.312	2215867	189792	34.438	5.840 #
18) L4 AR-1242-3	5.532	4.498	417075	545935	11.251	39.917 #
19) L4 AR-1242-4	0.000	4.551	0	686849	N.D.	54.405 #
20) L4 AR-1242-5	6.354	5.048	454870	798916	15.309	48.781 #
21) L5 AR-1248-1	5.440	4.296	988166	300414	31.847	24.853
22) L5 AR-1248-2	5.707	4.518	738936	287799	18.418	16.142
23) L5 AR-1248-3	5.913	4.551	286895	686849	6.397	38.378 #
24) L5 AR-1248-4	6.354	4.726	454870	536007	9.202	24.727 #
25) L5 AR-1248-5	6.354	5.085	454870	526041	9.696	24.528 #
26) L6 AR-1254-1	6.262	5.048	630264	798916	11.707	22.281 #
27) L6 AR-1254-2	6.518	5.231	1913782	170379	22.648	5.521 #
28) L6 AR-1254-3	6.888	5.593	2437822	607624	26.853	12.295 #
29) L6 AR-1254-4	7.182	5.855	260747	366651	3.719	11.914 #
30) L6 AR-1254-5	7.542	6.192	1120514	70452	14.861	1.592 #
31) L7 AR-1260-1	7.029	5.698	495332	164074	7.031	4.678 #
32) L7 AR-1260-2	7.283	5.855	685523	366651	7.368	8.432
33) L7 AR-1260-3	7.680	6.023	713060	327949	10.891	8.158 #
34) L7 AR-1260-4	0.000	6.525	0	246119	N.D.	8.895 #
35) L7 AR-1260-5	8.179	6.726	175985	365177	1.069	5.065 #
36) L8 AR-1262-1	7.680	6.192	713060	70452	6.828	1.538 #
37) L8 AR-1262-2	8.179	6.726	175985	365177	0.896	4.403 #
38) L8 AR-1262-3	0.000	7.023	0	1302919	N.D.	39.219 #
39) L8 AR-1262-4	0.000	7.023	0	1302919	N.D.	21.297 #
41) L9 AR-1268-1	0.000	7.023	0	1302919	N.D.	11.347 #
42) L9 AR-1268-2	0.000	7.023	0	1302919	N.D.	11.940 #

Data Path : Z:\pestpcbsrv\HPCHEM1\ECD_0\Data\PO113018\
 Data File : PO052092.D
 Signal(s) : Signal #1: ECD1A.CH Signal #2: ECD2B.CH
 Acq On : 01 Dec 2018 6:55
 Operator : SM/SJ
 Sample : J6129-10
 Misc :
 ALS Vial : 46 Sample Multiplier: 1

Instrument :
 ECD_0
 ClientSampleId :

Integration File signal 1: autoint1.e
 Integration File signal 2: autoint2.e
 Quant Time: Dec 02 23:54:19 2018
 Quant Method : Z:\pestpcbsrv\HPCHEM1\ECD_0\methods\PO112918.M
 Quant Title : GC EXTRACTABLES
 QLast Update : Fri Nov 30 03:43:16 2018
 Response via : Initial Calibration
 Integrator: ChemStation 6890 Scale Mode: Small noise peaks clipped

Volume Inj. : 2 µl
 Signal #1 Phase : ZB-MR1 Signal #2 Phase: ZB-MR2
 Signal #1 Info : 30Mx0.32mmx 0.50µ Signal #2 Info : 30M x 0.32mm x 0.25µm

Compound	RT#1	RT#2	Resp#1	Resp#2	ng/ml	ng/ml

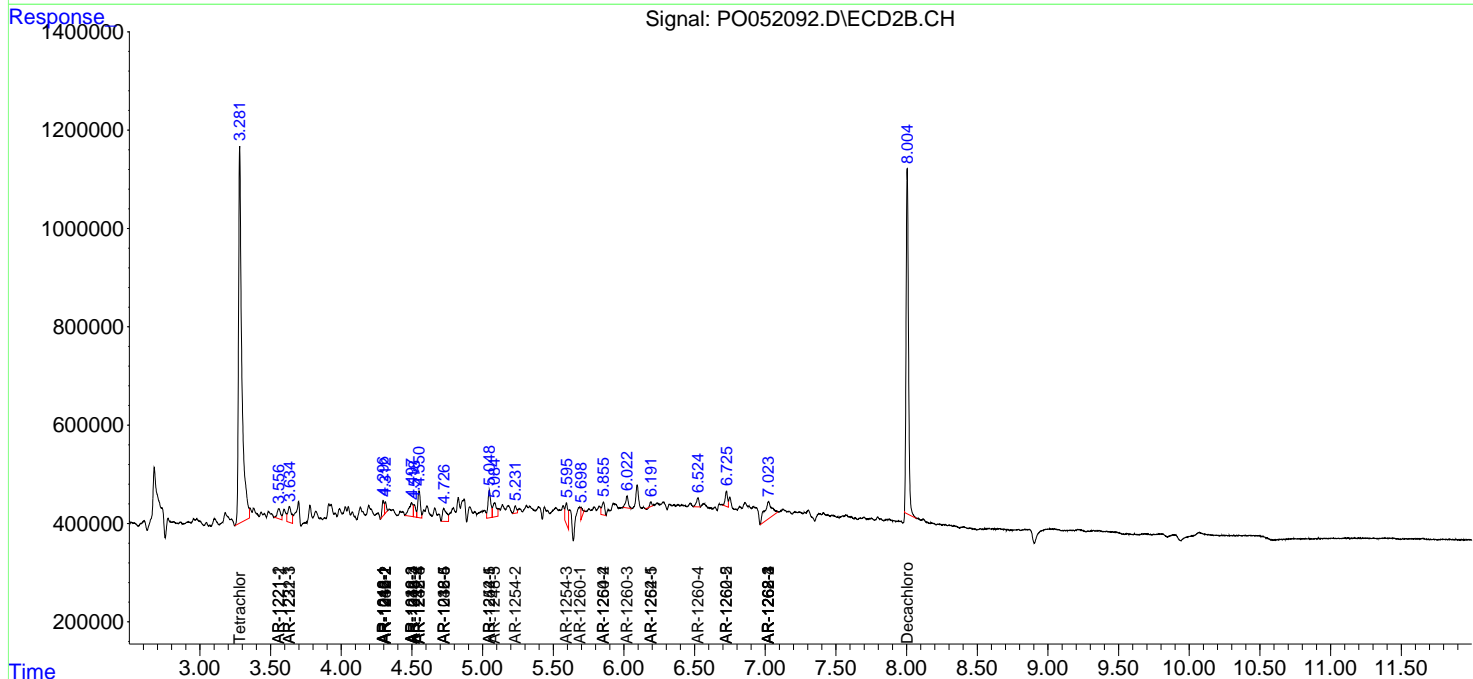
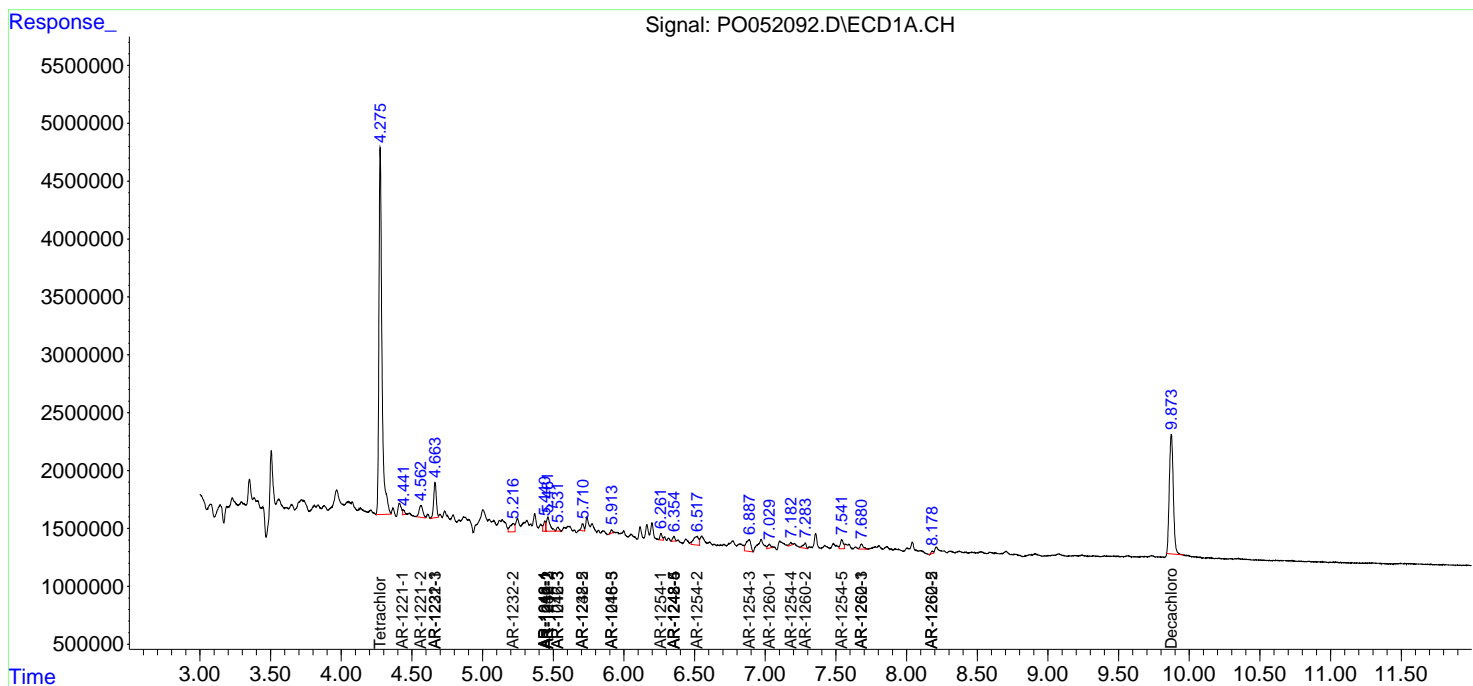
(f)=RT Delta > 1/2 Window (#)=Amounts differ by > 25% (m)=manual int.

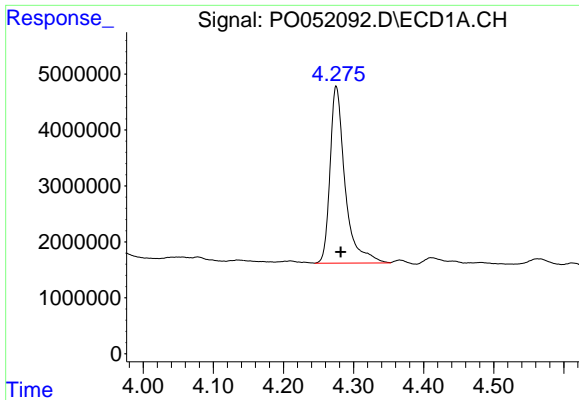
Data Path : Z:\pestpcsrv\HPCHEM1\ECD_O\Data\PO113018\
 Data File : PO052092.D
 Signal(s) : Signal #1: ECD1A.CH Signal #2: ECD2B.CH
 Acq On : 01 Dec 2018 6:55
 Operator : SM/SJ
 Sample : J6129-10
 Misc :
 ALS Vial : 46 Sample Multiplier: 1

Instrument :
 ECD_O
 ClientSampled :

Integration File signal 1: autoint1.e
 Integration File signal 2: autoint2.e
 Quant Time: Dec 02 23:54:19 2018
 Quant Method : Z:\pestpcsrv\HPCHEM1\ECD_O\methods\PO112918.M
 Quant Title : GC EXTRACTABLES
 QLast Update : Fri Nov 30 03:43:16 2018
 Response via : Initial Calibration
 Integrator: ChemStation 6890 Scale Mode: Small noise peaks clipped

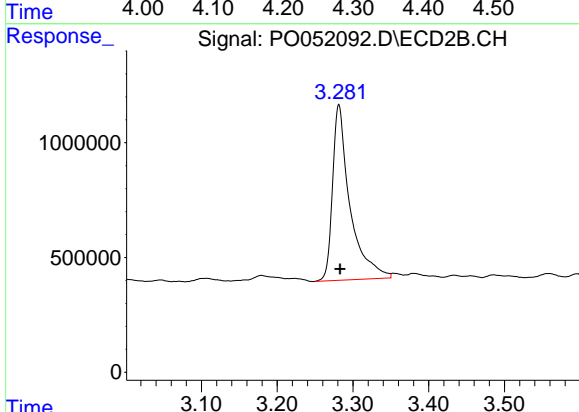
Volume Inj. : 2 µl
 Signal #1 Phase : ZB-MR1 Signal #2 Phase: ZB-MR2
 Signal #1 Info : 30Mx0.32mmx 0.50µ Signal #2 Info : 30M x 0.32mm x 0.25µm



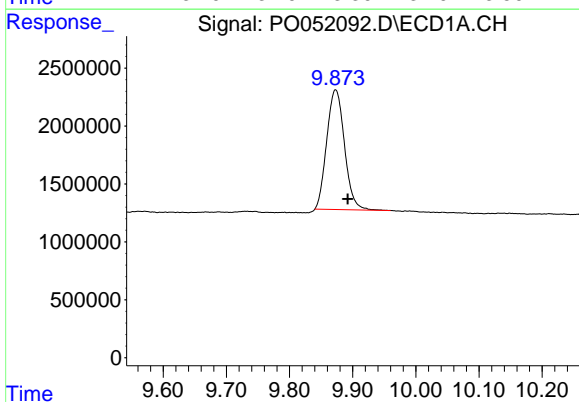


#1 Tetrachloro-m-xylene
 R.T.: 4.275 min
 Delta R.T.: -0.007 min
 Response: 47129176
 Conc: 19.10 ng/ml

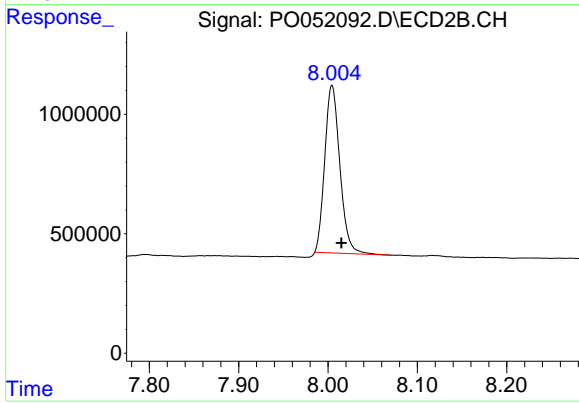
Instrument :
 ECD_O
 ClientSampleId :



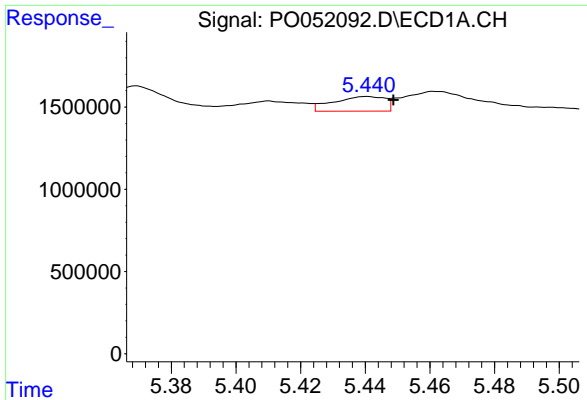
#1 Tetrachloro-m-xylene
 R.T.: 3.281 min
 Delta R.T.: -0.001 min
 Response: 12189600
 Conc: 13.62 ng/ml



#2 Decachlorobiphenyl
 R.T.: 9.873 min
 Delta R.T.: -0.019 min
 Response: 20186940
 Conc: 12.40 ng/ml

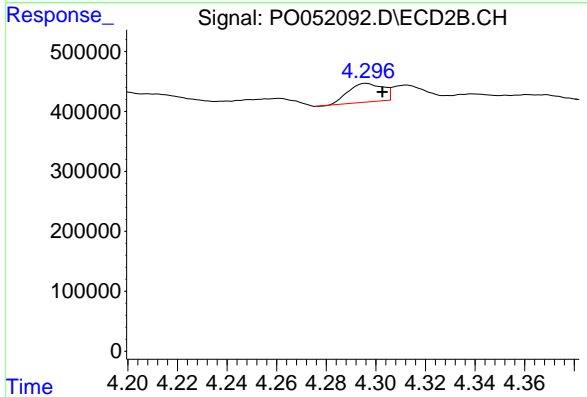


#2 Decachlorobiphenyl
 R.T.: 8.005 min
 Delta R.T.: -0.010 min
 Response: 8254250
 Conc: 12.04 ng/ml

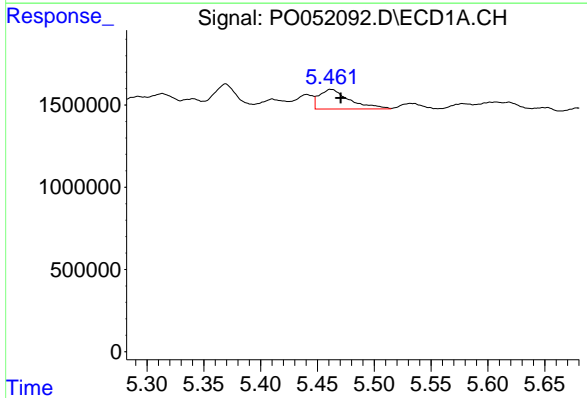


#3 AR-1016-1
 R.T.: 5.440 min
 Delta R.T.: -0.008 min
 Response: 988166
 Conc: 17.72 ng/ml

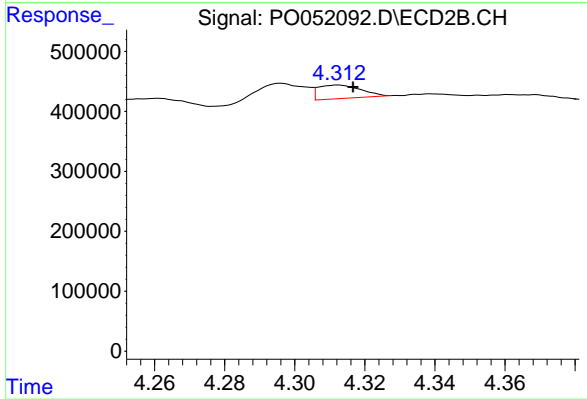
Instrument :
 ECD_O
 ClientSampleId :



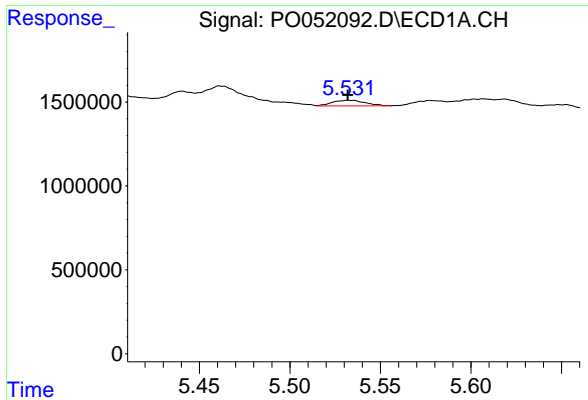
#3 AR-1016-1
 R.T.: 4.296 min
 Delta R.T.: -0.007 min
 Response: 300414
 Conc: 15.39 ng/ml



#4 AR-1016-2
 R.T.: 5.461 min
 Delta R.T.: -0.009 min
 Response: 2215867
 Conc: 26.10 ng/ml



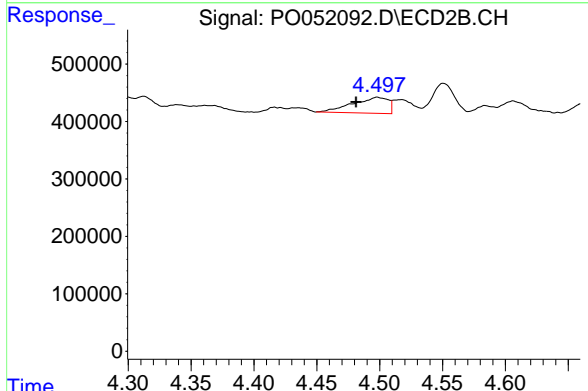
#4 AR-1016-2
 R.T.: 4.312 min
 Delta R.T.: -0.004 min
 Response: 189792
 Conc: 4.31 ng/ml



#5 AR-1016-3

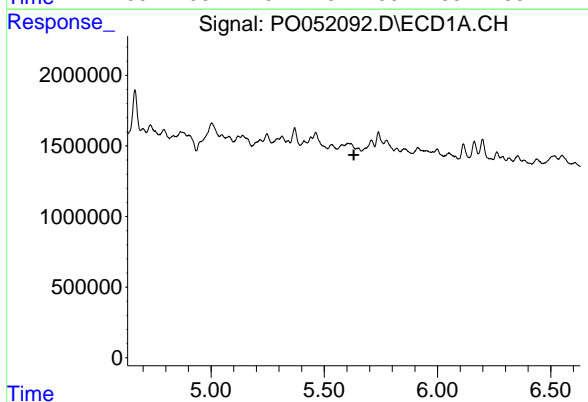
R.T.: 5.532 min
 Delta R.T.: 0.000 min
 Response: 417075
 Conc: 8.54 ng/ml

Instrument :
 ECD_O
 ClientSampled :



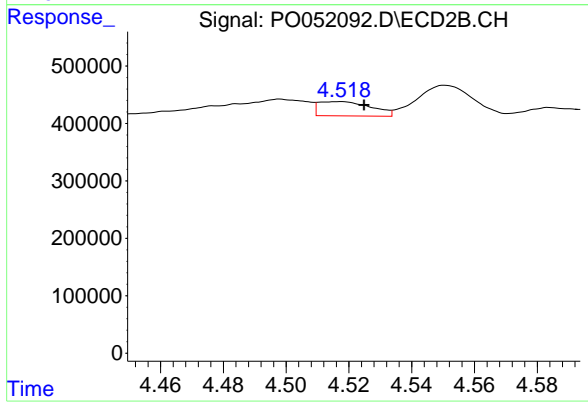
#5 AR-1016-3

R.T.: 4.498 min
 Delta R.T.: 0.017 min
 Response: 545935
 Conc: 29.68 ng/ml



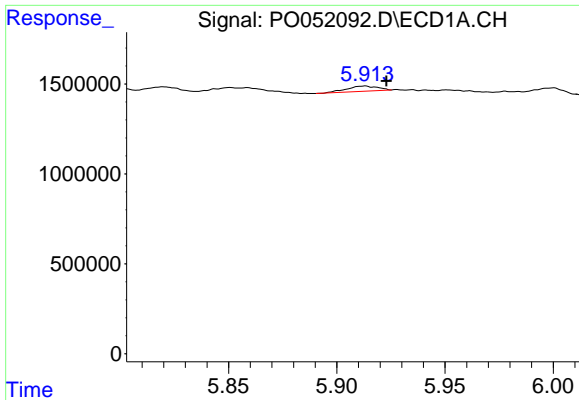
#6 AR-1016-4

R.T.: 0.000 min
 Exp R.T. : 5.631 min
 Response: 0
 Conc: N.D.



#6 AR-1016-4

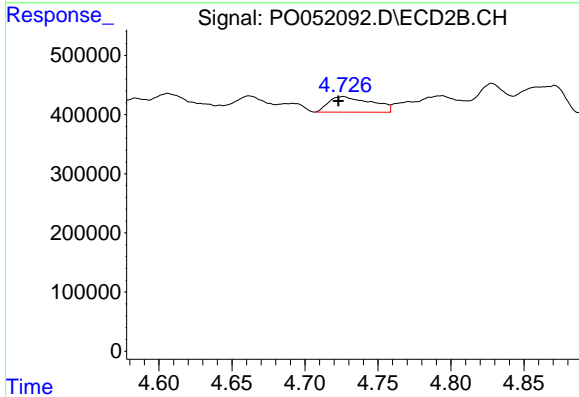
R.T.: 4.518 min
 Delta R.T.: -0.007 min
 Response: 287799
 Conc: 19.32 ng/ml



#7 AR-1016-5

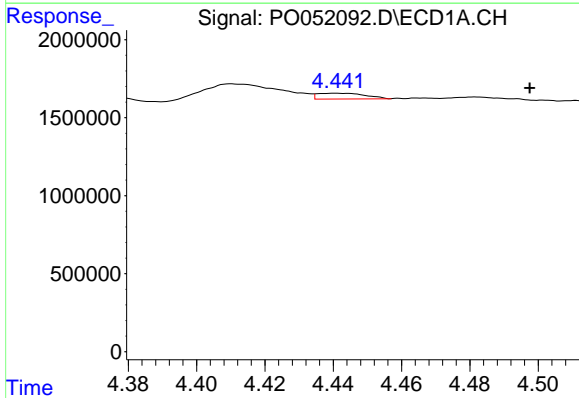
R.T.: 5.913 min
 Delta R.T.: -0.010 min
 Response: 286895
 Conc: 7.88 ng/ml

Instrument :
 ECD_O
 ClientSampleId :



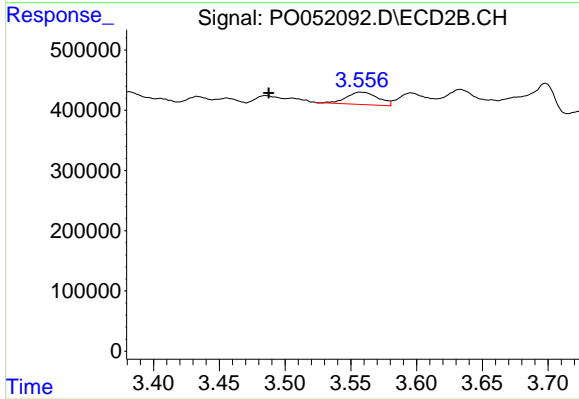
#7 AR-1016-5

R.T.: 4.726 min
 Delta R.T.: 0.003 min
 Response: 536007
 Conc: 29.68 ng/ml



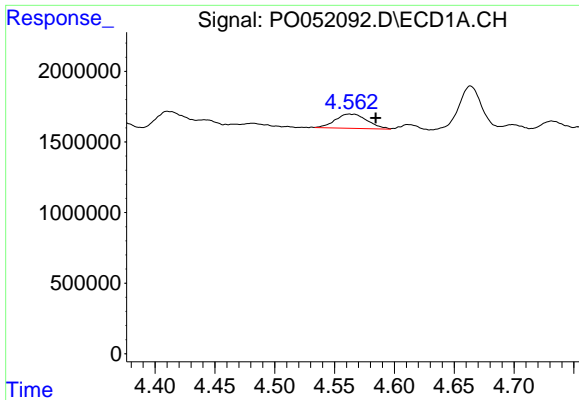
#8 AR-1221-1

R.T.: 4.441 min
 Delta R.T.: -0.057 min
 Response: 361515
 Conc: 18.09 ng/ml



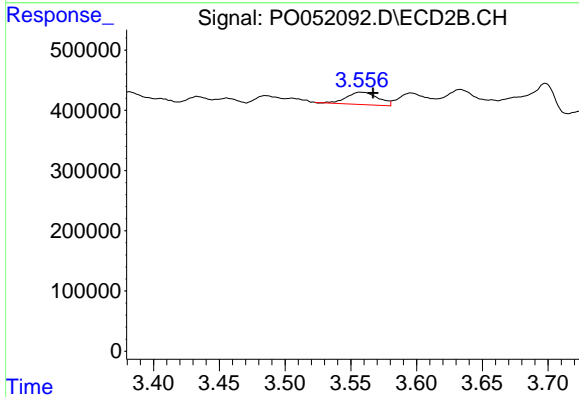
#8 AR-1221-1

R.T.: 3.556 min
 Delta R.T.: 0.069 min
 Response: 340000
 Conc: 47.42 ng/ml

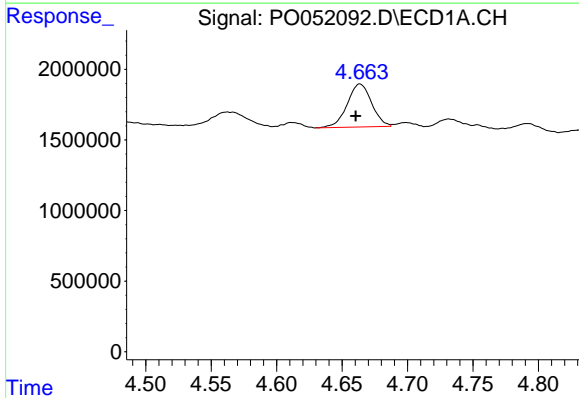


#9 AR-1221-2
 R.T.: 4.562 min
 Delta R.T.: -0.022 min
 Response: 1878764
 Conc: 131.58 ng/ml

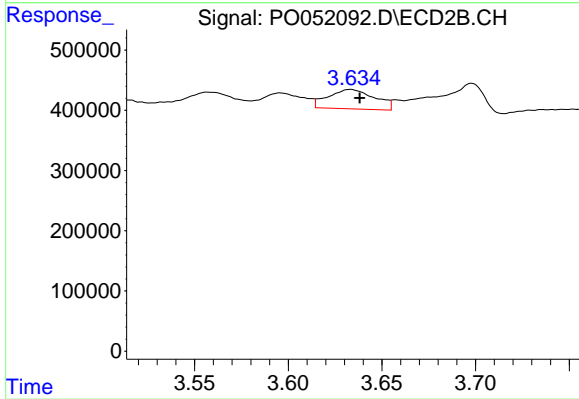
Instrument :
 ECD_O
 ClientSampleId :



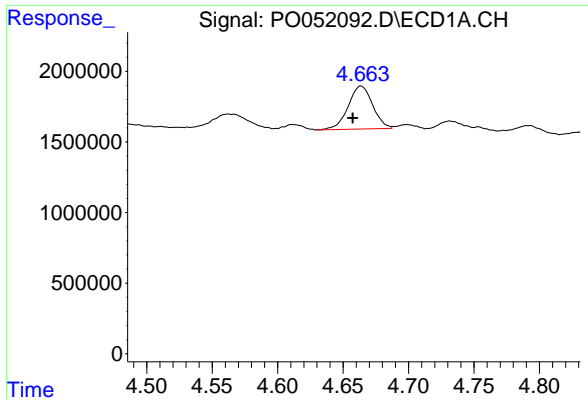
#9 AR-1221-2
 R.T.: 3.556 min
 Delta R.T.: -0.011 min
 Response: 340000
 Conc: 63.17 ng/ml



#10 AR-1221-3
 R.T.: 4.664 min
 Delta R.T.: 0.003 min
 Response: 3952746
 Conc: 87.50 ng/ml

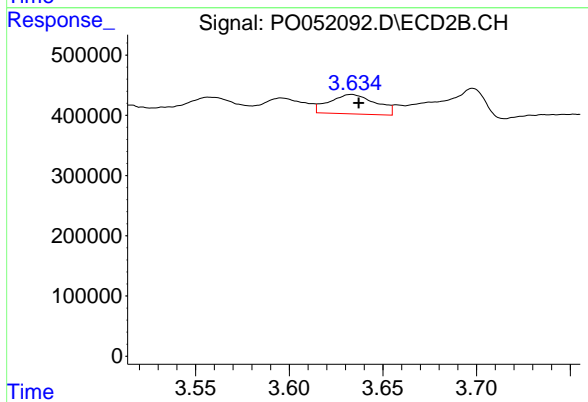


#10 AR-1221-3
 R.T.: 3.633 min
 Delta R.T.: -0.005 min
 Response: 555702
 Conc: 31.99 ng/ml

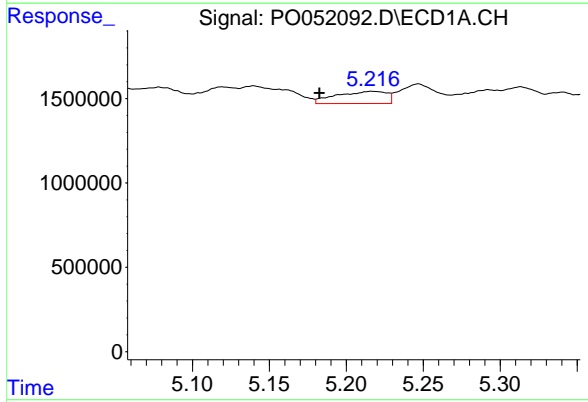


#11 AR-1232-1
 R.T.: 4.664 min
 Delta R.T.: 0.006 min
 Response: 3952746
 Conc: 106.90 ng/ml

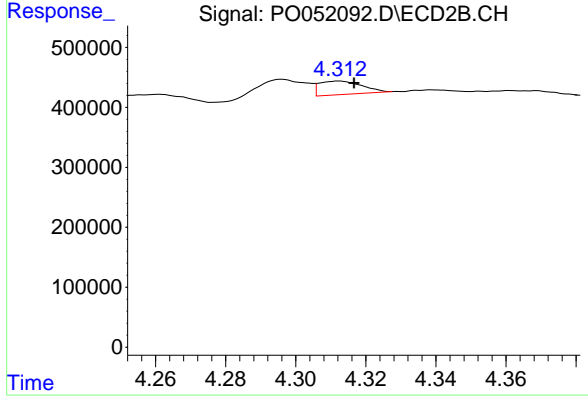
Instrument :
 ECD_O
 ClientSampleId :



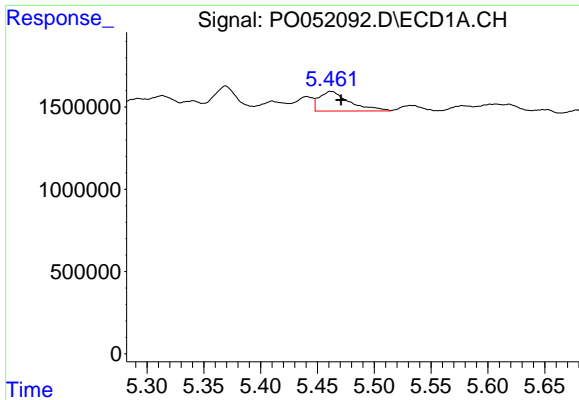
#11 AR-1232-1
 R.T.: 3.633 min
 Delta R.T.: -0.004 min
 Response: 555702
 Conc: 39.50 ng/ml



#12 AR-1232-2
 R.T.: 5.217 min
 Delta R.T.: 0.034 min
 Response: 1640949
 Conc: 98.08 ng/ml



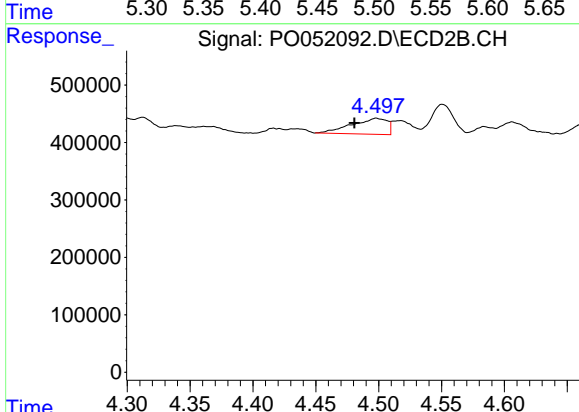
#12 AR-1232-2
 R.T.: 4.312 min
 Delta R.T.: -0.004 min
 Response: 189792
 Conc: 10.99 ng/ml



#13 AR-1232-3

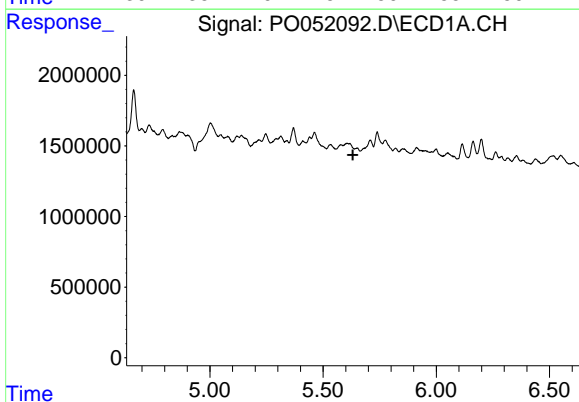
R.T.: 5.461 min
 Delta R.T.: -0.010 min
 Response: 2215867
 Conc: 66.23 ng/ml

Instrument :
 ECD_O
 ClientSampled :



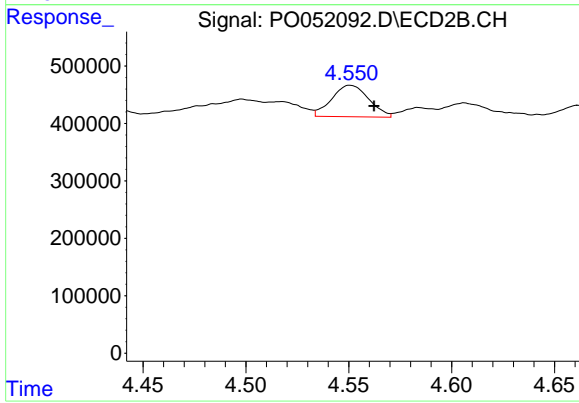
#13 AR-1232-3

R.T.: 4.498 min
 Delta R.T.: 0.017 min
 Response: 545935
 Conc: 76.35 ng/ml



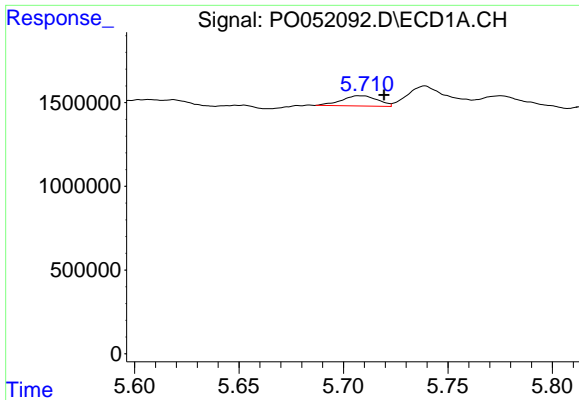
#14 AR-1232-4

R.T.: 0.000 min
 Exp R.T. : 5.631 min
 Response: 0
 Conc: N.D.



#14 AR-1232-4

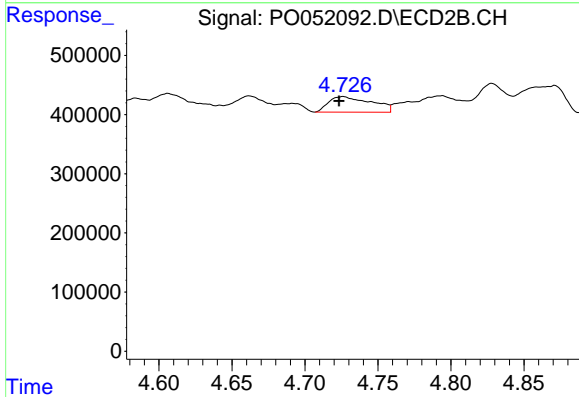
R.T.: 4.551 min
 Delta R.T.: -0.012 min
 Response: 686849
 Conc: 114.80 ng/ml



#15 AR-1232-5

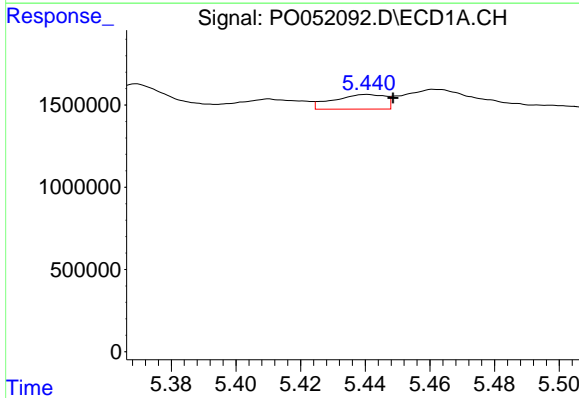
R.T.: 5.707 min
 Delta R.T.: -0.012 min
 Response: 738936
 Conc: 69.14 ng/ml

Instrument :
 ECD_O
 ClientSampleId :



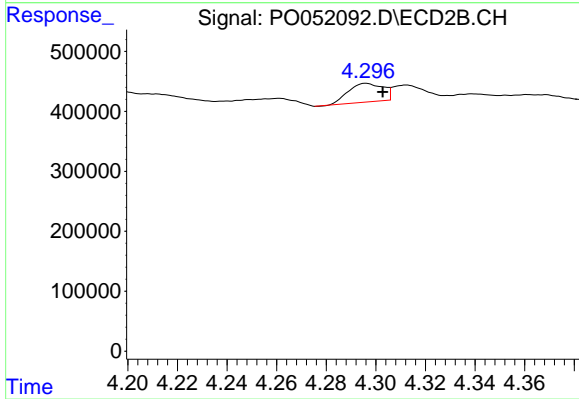
#15 AR-1232-5

R.T.: 4.726 min
 Delta R.T.: 0.003 min
 Response: 536007
 Conc: 79.79 ng/ml



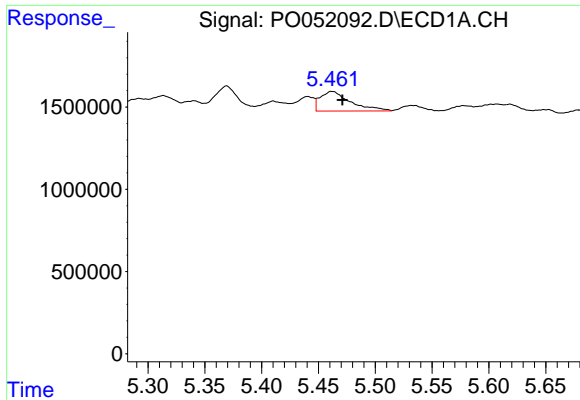
#16 AR-1242-1

R.T.: 5.440 min
 Delta R.T.: -0.008 min
 Response: 988166
 Conc: 23.39 ng/ml



#16 AR-1242-1

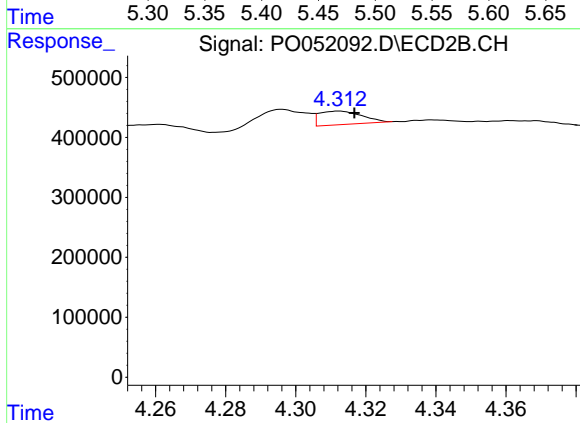
R.T.: 4.296 min
 Delta R.T.: -0.007 min
 Response: 300414
 Conc: 20.43 ng/ml



#17 AR-1242-2

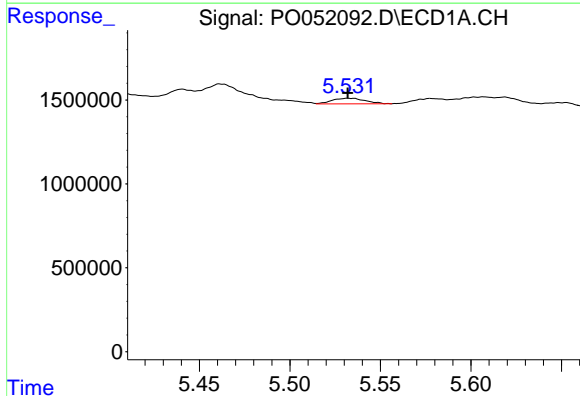
R.T.: 5.461 min
 Delta R.T.: -0.010 min
 Response: 2215867
 Conc: 34.44 ng/ml

Instrument :
 ECD_O
 ClientSampleId :



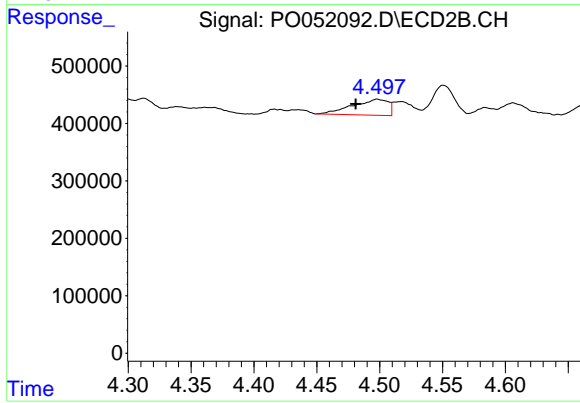
#17 AR-1242-2

R.T.: 4.312 min
 Delta R.T.: -0.004 min
 Response: 189792
 Conc: 5.84 ng/ml



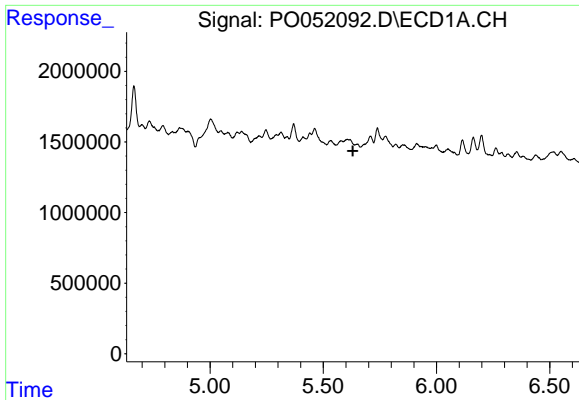
#18 AR-1242-3

R.T.: 5.532 min
 Delta R.T.: 0.000 min
 Response: 417075
 Conc: 11.25 ng/ml



#18 AR-1242-3

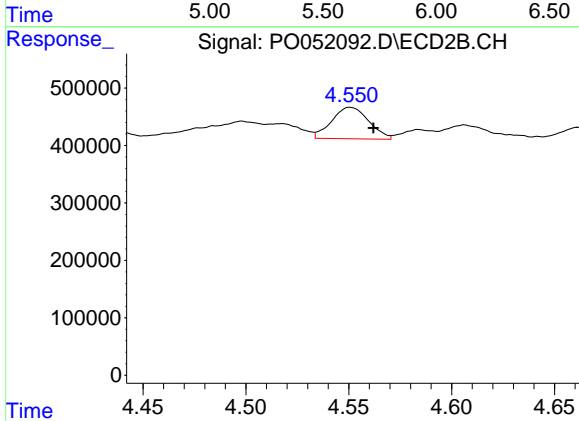
R.T.: 4.498 min
 Delta R.T.: 0.017 min
 Response: 545935
 Conc: 39.92 ng/ml



#19 AR-1242-4

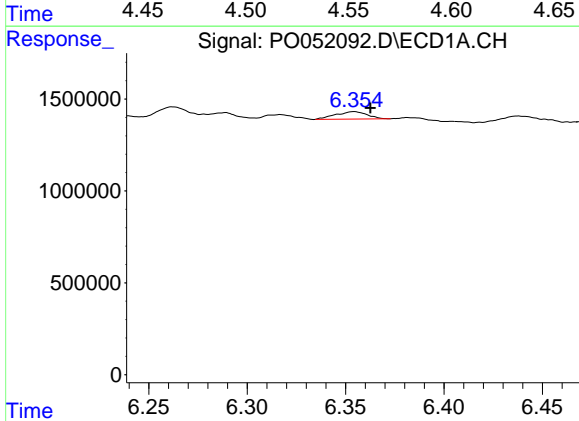
R.T.: 0.000 min
 Exp R.T.: 5.631 min
 Response: 0
 Conc: N.D.

Instrument :
 ECD_O
 ClientSampled :



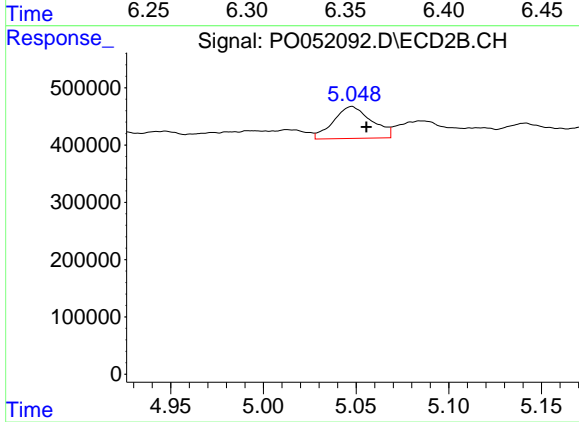
#19 AR-1242-4

R.T.: 4.551 min
 Delta R.T.: -0.011 min
 Response: 686849
 Conc: 54.41 ng/ml



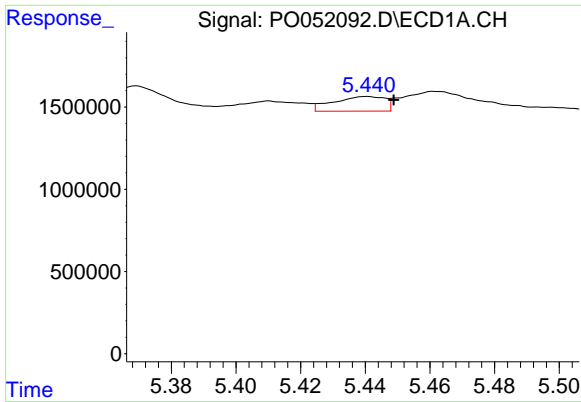
#20 AR-1242-5

R.T.: 6.354 min
 Delta R.T.: -0.008 min
 Response: 454870
 Conc: 15.31 ng/ml



#20 AR-1242-5

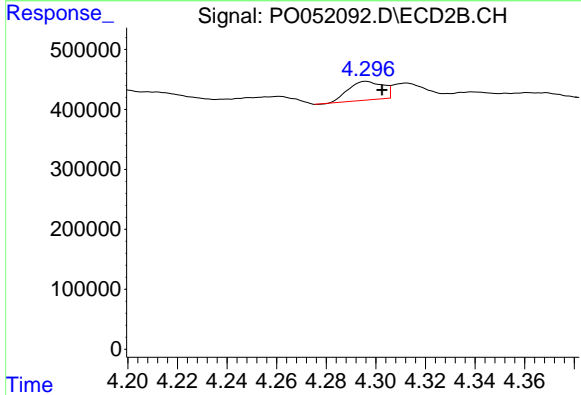
R.T.: 5.048 min
 Delta R.T.: -0.008 min
 Response: 798916
 Conc: 48.78 ng/ml



#21 AR-1248-1

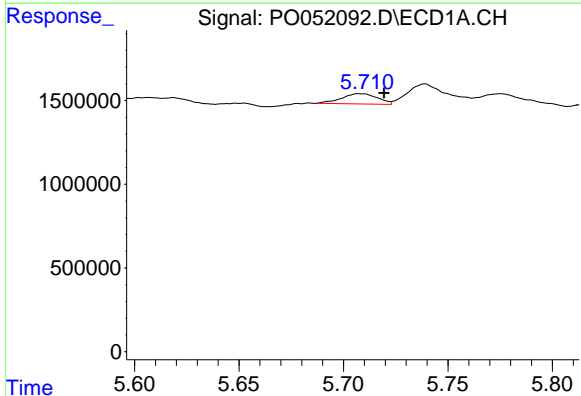
R.T.: 5.440 min
 Delta R.T.: -0.008 min
 Response: 988166
 Conc: 31.85 ng/ml

Instrument :
 ECD_O
 ClientSampleId :



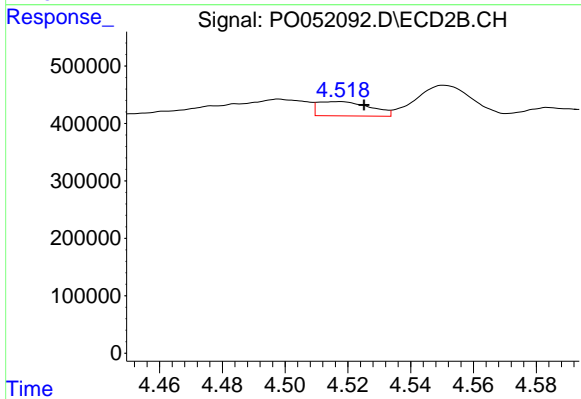
#21 AR-1248-1

R.T.: 4.296 min
 Delta R.T.: -0.007 min
 Response: 300414
 Conc: 24.85 ng/ml



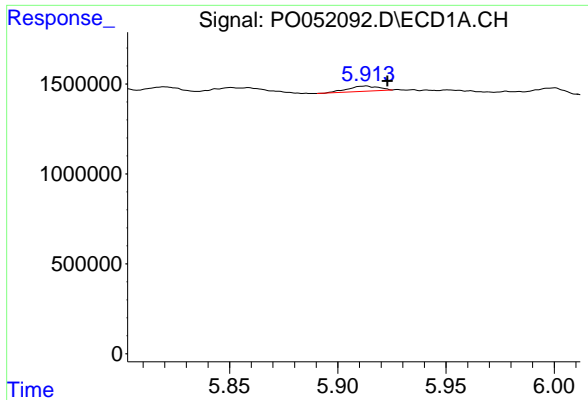
#22 AR-1248-2

R.T.: 5.707 min
 Delta R.T.: -0.012 min
 Response: 738936
 Conc: 18.42 ng/ml



#22 AR-1248-2

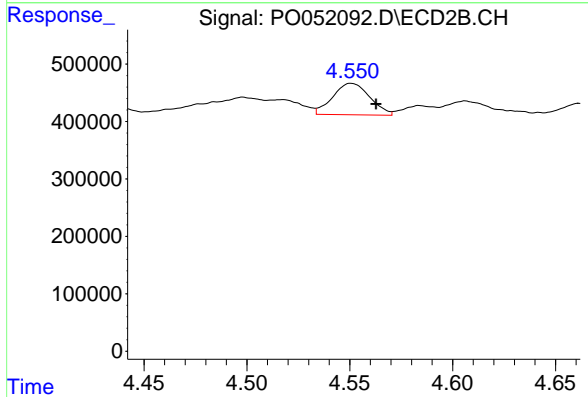
R.T.: 4.518 min
 Delta R.T.: -0.007 min
 Response: 287799
 Conc: 16.14 ng/ml



#23 AR-1248-3

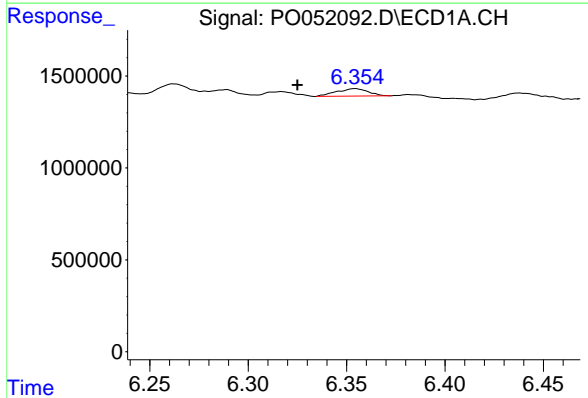
R.T.: 5.913 min
 Delta R.T.: -0.010 min
 Response: 286895
 Conc: 6.40 ng/ml

Instrument :
 ECD_O
 ClientSampleId :



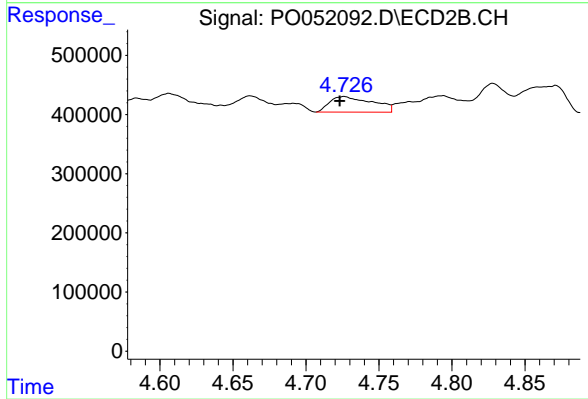
#23 AR-1248-3

R.T.: 4.551 min
 Delta R.T.: -0.012 min
 Response: 686849
 Conc: 38.38 ng/ml



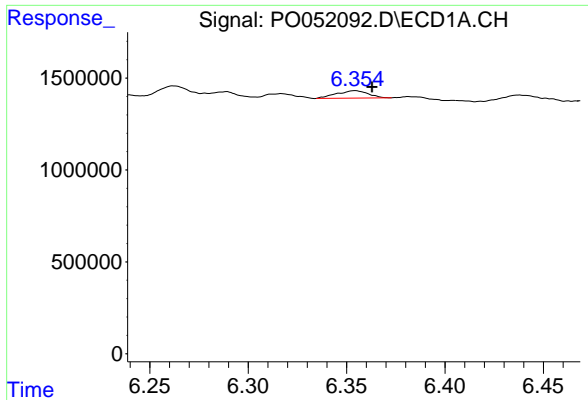
#24 AR-1248-4

R.T.: 6.354 min
 Delta R.T.: 0.029 min
 Response: 454870
 Conc: 9.20 ng/ml



#24 AR-1248-4

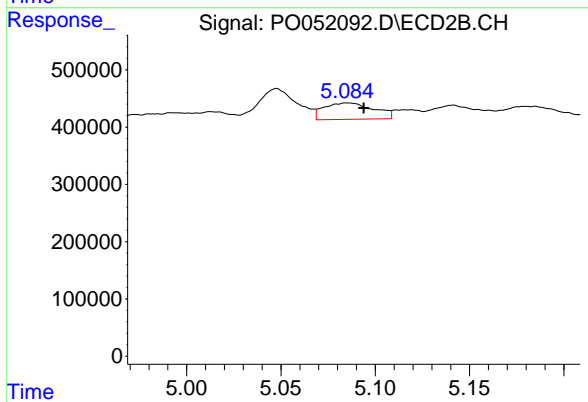
R.T.: 4.726 min
 Delta R.T.: 0.003 min
 Response: 536007
 Conc: 24.73 ng/ml



#25 AR-1248-5

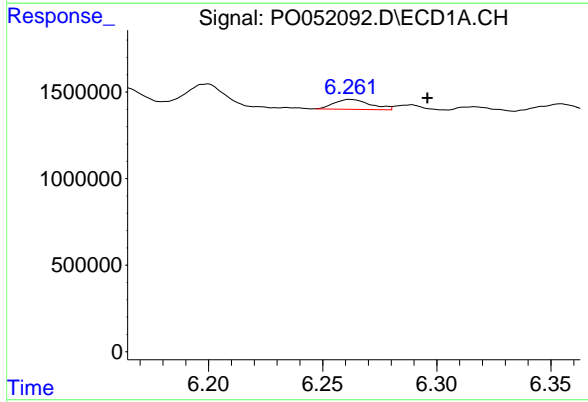
R.T.: 6.354 min
 Delta R.T.: -0.008 min
 Response: 454870
 Conc: 9.70 ng/ml

Instrument :
 ECD_O
 ClientSampled :



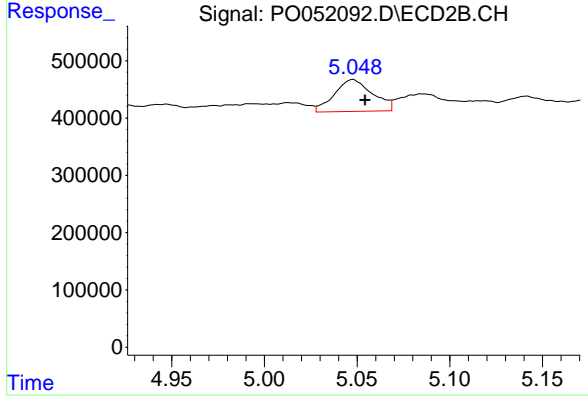
#25 AR-1248-5

R.T.: 5.085 min
 Delta R.T.: -0.009 min
 Response: 526041
 Conc: 24.53 ng/ml



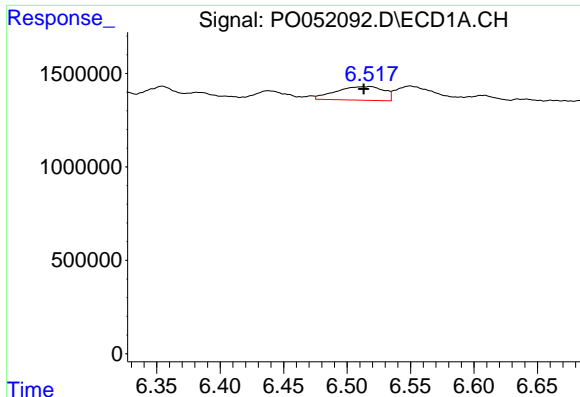
#26 AR-1254-1

R.T.: 6.262 min
 Delta R.T.: -0.034 min
 Response: 630264
 Conc: 11.71 ng/ml



#26 AR-1254-1

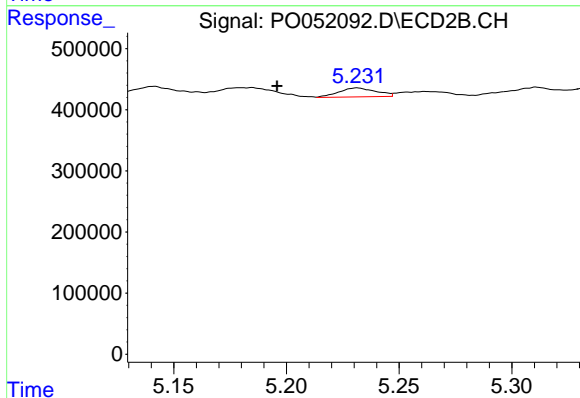
R.T.: 5.048 min
 Delta R.T.: -0.007 min
 Response: 798916
 Conc: 22.28 ng/ml



#27 AR-1254-2

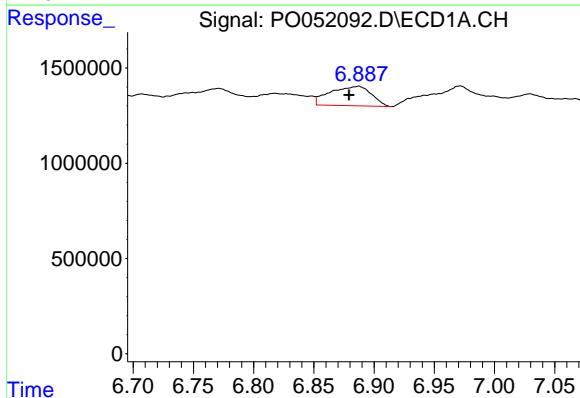
R.T.: 6.518 min
 Delta R.T.: 0.005 min
 Response: 1913782
 Conc: 22.65 ng/ml

Instrument :
 ECD_O
 ClientSampleId :



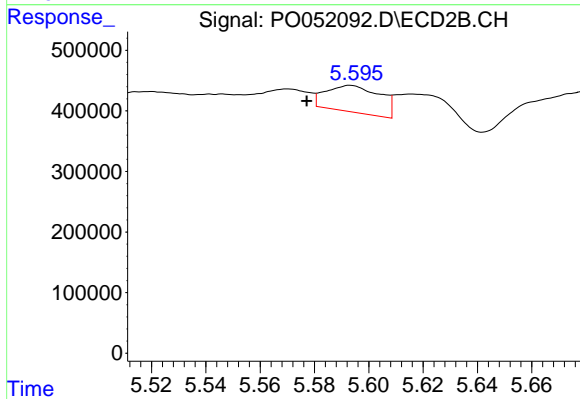
#27 AR-1254-2

R.T.: 5.231 min
 Delta R.T.: 0.036 min
 Response: 170379
 Conc: 5.52 ng/ml



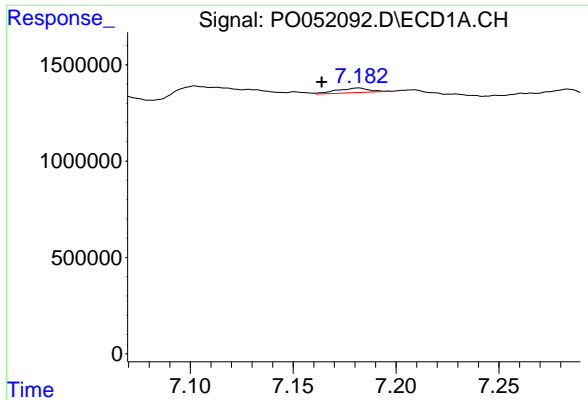
#28 AR-1254-3

R.T.: 6.888 min
 Delta R.T.: 0.008 min
 Response: 2437822
 Conc: 26.85 ng/ml



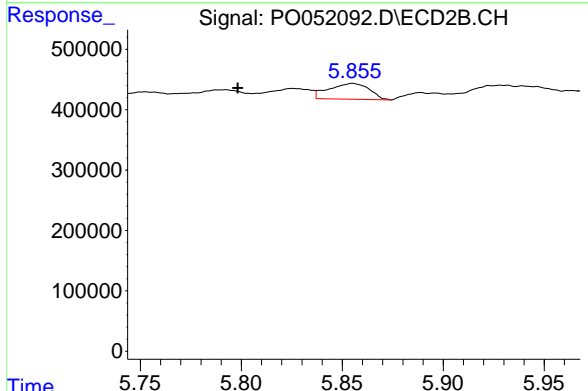
#28 AR-1254-3

R.T.: 5.593 min
 Delta R.T.: 0.016 min
 Response: 607624
 Conc: 12.29 ng/ml

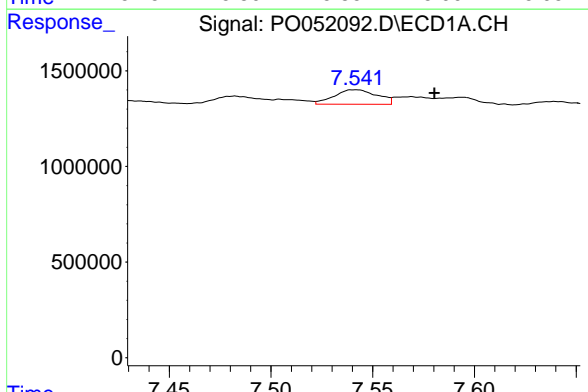


#29 AR-1254-4
 R.T.: 7.182 min
 Delta R.T.: 0.018 min
 Response: 260747
 Conc: 3.72 ng/ml

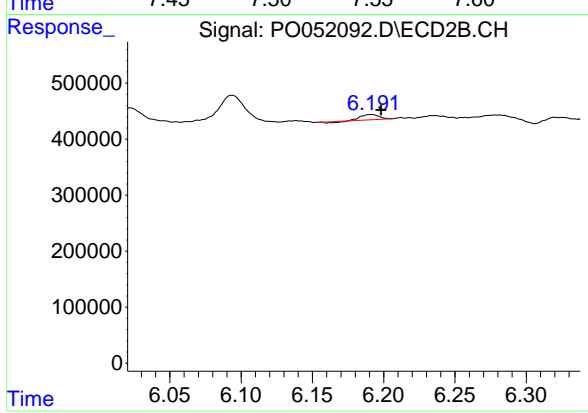
Instrument :
 ECD_O
 ClientSampleId :



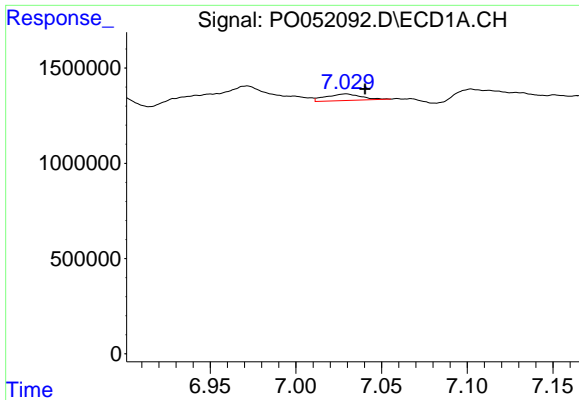
#29 AR-1254-4
 R.T.: 5.855 min
 Delta R.T.: 0.057 min
 Response: 366651
 Conc: 11.91 ng/ml



#30 AR-1254-5
 R.T.: 7.542 min
 Delta R.T.: -0.039 min
 Response: 1120514
 Conc: 14.86 ng/ml



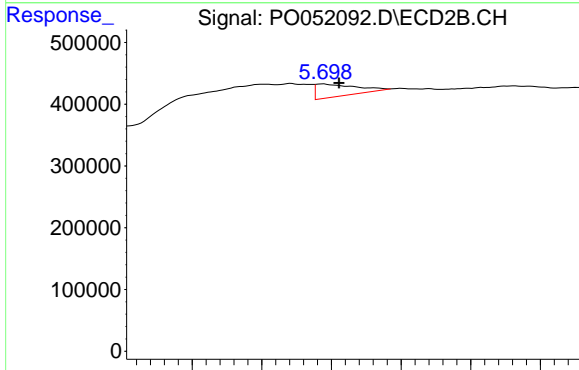
#30 AR-1254-5
 R.T.: 6.192 min
 Delta R.T.: -0.006 min
 Response: 70452
 Conc: 1.59 ng/ml



#31 AR-1260-1

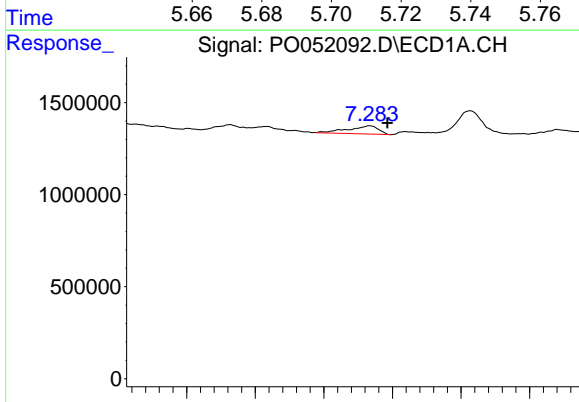
R.T.: 7.029 min
 Delta R.T.: -0.011 min
 Response: 495332
 Conc: 7.03 ng/ml

Instrument :
 ECD_O
 ClientSampleId :



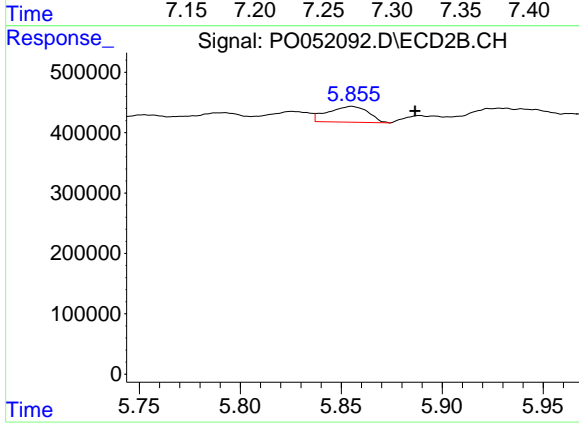
#31 AR-1260-1

R.T.: 5.698 min
 Delta R.T.: -0.005 min
 Response: 164074
 Conc: 4.68 ng/ml



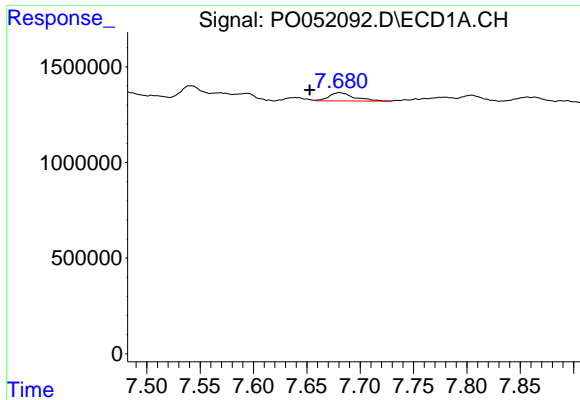
#32 AR-1260-2

R.T.: 7.283 min
 Delta R.T.: -0.013 min
 Response: 685523
 Conc: 7.37 ng/ml



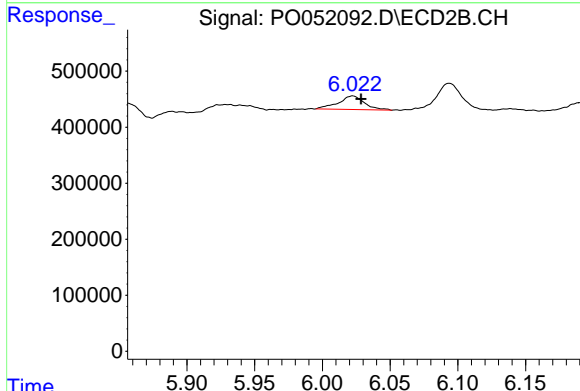
#32 AR-1260-2

R.T.: 5.855 min
 Delta R.T.: -0.031 min
 Response: 366651
 Conc: 8.43 ng/ml

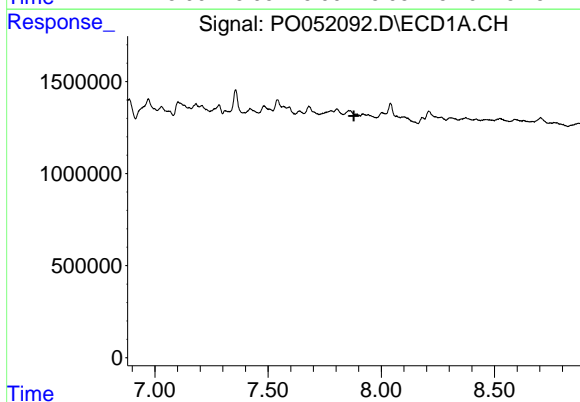


#33 AR-1260-3
 R.T.: 7.680 min
 Delta R.T.: 0.027 min
 Response: 713060
 Conc: 10.89 ng/ml

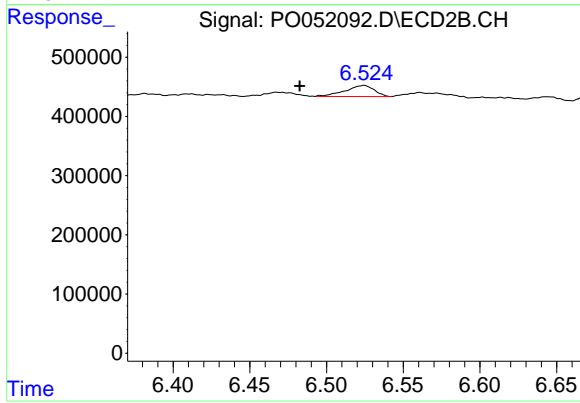
Instrument :
 ECD_O
 ClientSampleId :



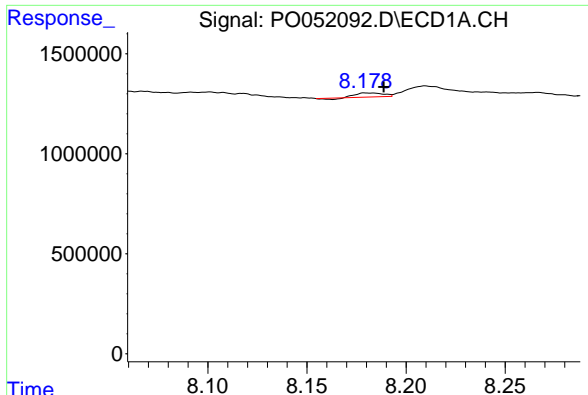
#33 AR-1260-3
 R.T.: 6.023 min
 Delta R.T.: -0.006 min
 Response: 327949
 Conc: 8.16 ng/ml



#34 AR-1260-4
 R.T.: 0.000 min
 Exp R.T. : 7.879 min
 Response: 0
 Conc: N.D.

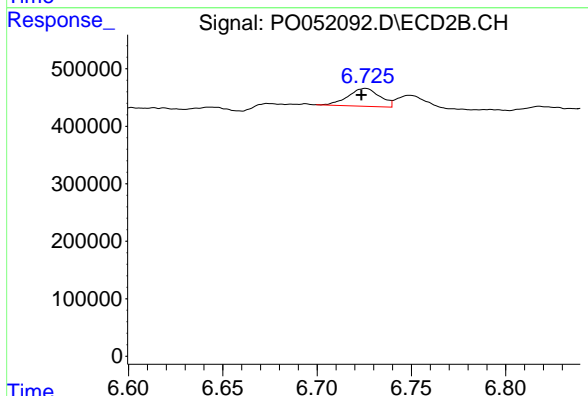


#34 AR-1260-4
 R.T.: 6.525 min
 Delta R.T.: 0.042 min
 Response: 246119
 Conc: 8.89 ng/ml

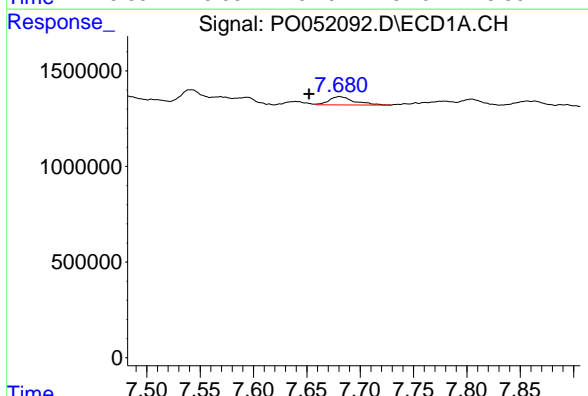


#35 AR-1260-5
 R.T.: 8.179 min
 Delta R.T.: -0.010 min
 Response: 175985
 Conc: 1.07 ng/ml

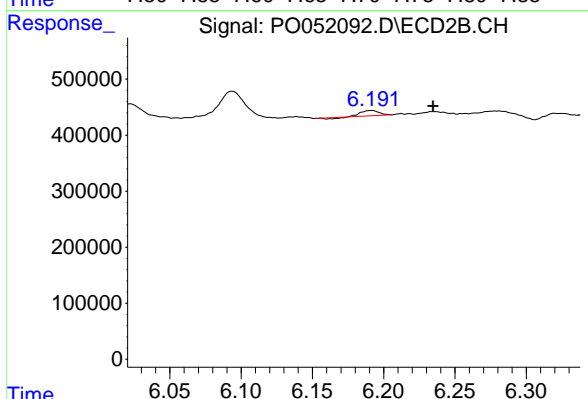
Instrument :
 ECD_O
 ClientSampled :



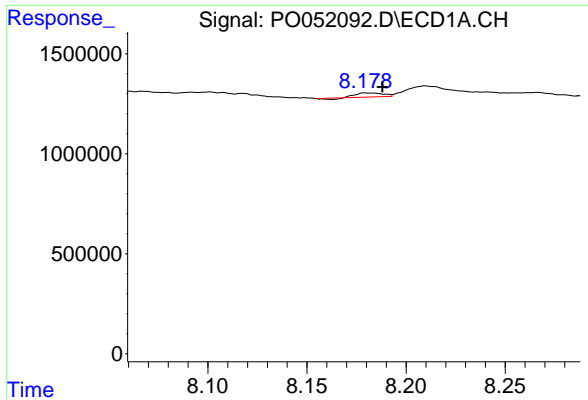
#35 AR-1260-5
 R.T.: 6.726 min
 Delta R.T.: 0.002 min
 Response: 365177
 Conc: 5.06 ng/ml



#36 AR-1262-1
 R.T.: 7.680 min
 Delta R.T.: 0.028 min
 Response: 713060
 Conc: 6.83 ng/ml



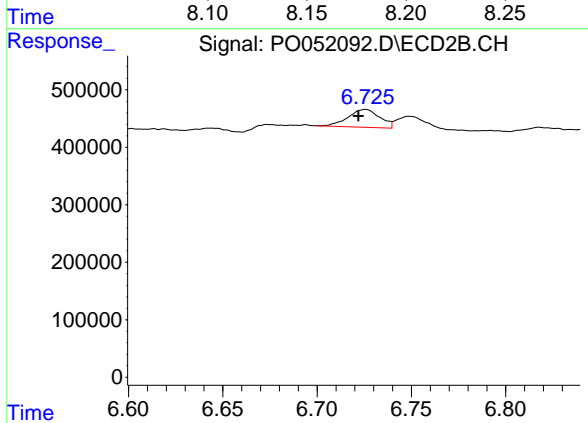
#36 AR-1262-1
 R.T.: 6.192 min
 Delta R.T.: -0.043 min
 Response: 70452
 Conc: 1.54 ng/ml



#37 AR-1262-2

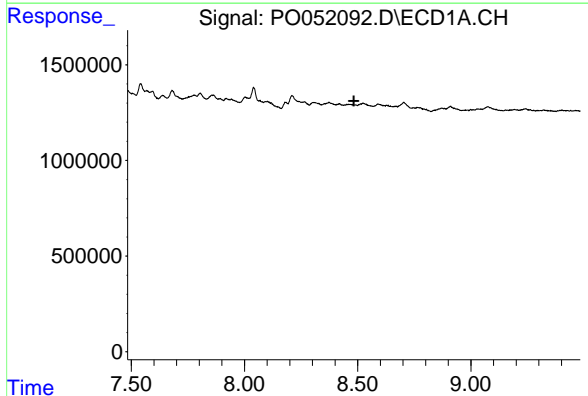
R.T.: 8.179 min
 Delta R.T.: -0.009 min
 Response: 175985
 Conc: 0.90 ng/ml

Instrument :
 ECD_O
 ClientSampleId :



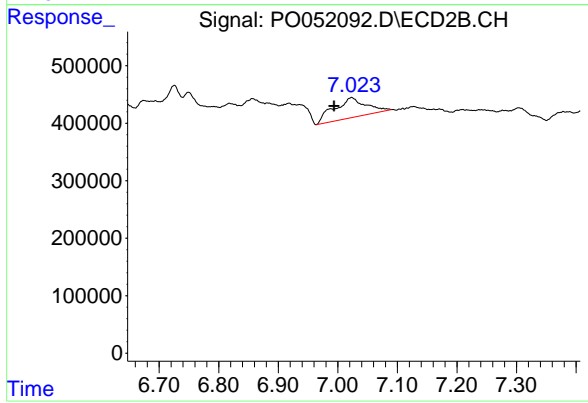
#37 AR-1262-2

R.T.: 6.726 min
 Delta R.T.: 0.004 min
 Response: 365177
 Conc: 4.40 ng/ml



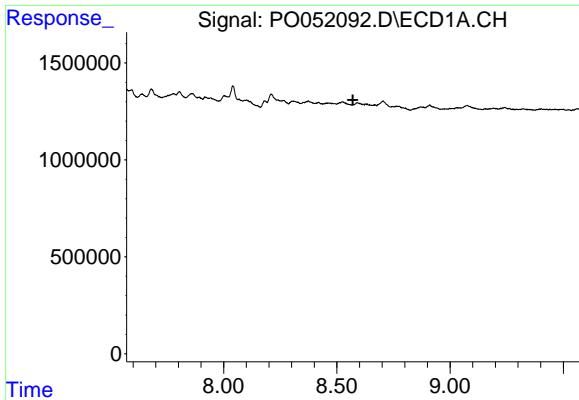
#38 AR-1262-3

R.T.: 0.000 min
 Exp R.T. : 8.483 min
 Response: 0
 Conc: N.D.



#38 AR-1262-3

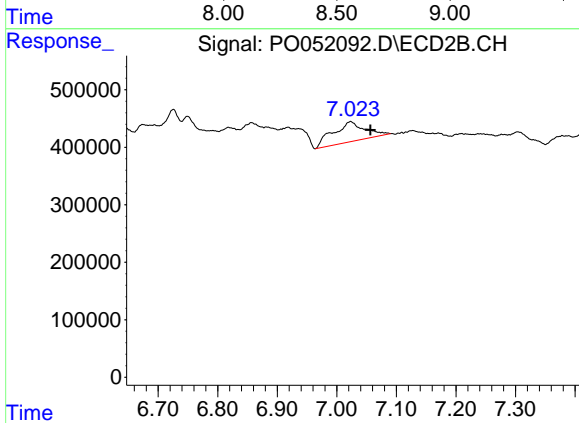
R.T.: 7.023 min
 Delta R.T.: 0.030 min
 Response: 1302919
 Conc: 39.22 ng/ml



#39 AR-1262-4

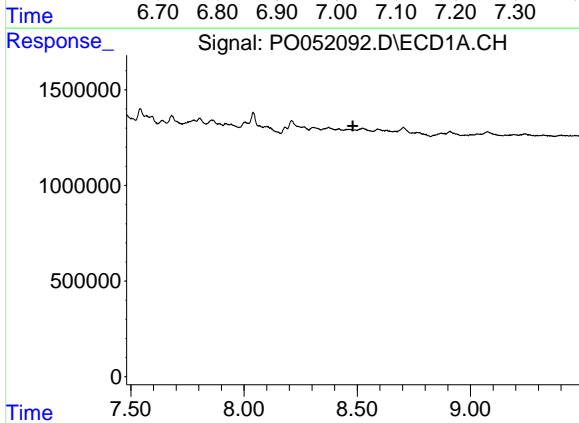
R.T.: 0.000 min
 Exp R.T. : 8.571 min
 Response: 0
 Conc: N.D.

Instrument :
 ECD_O
 ClientSampled :



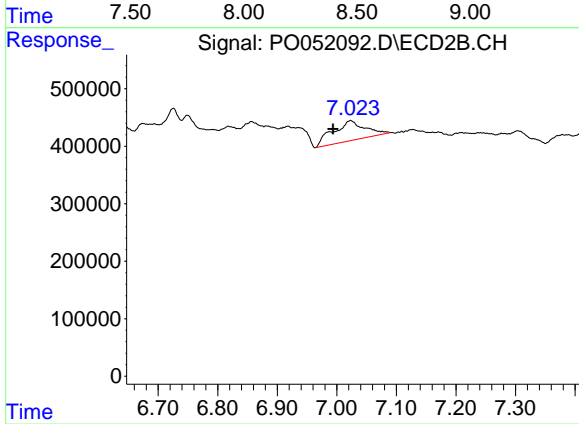
#39 AR-1262-4

R.T.: 7.023 min
 Delta R.T.: -0.033 min
 Response: 1302919
 Conc: 21.30 ng/ml



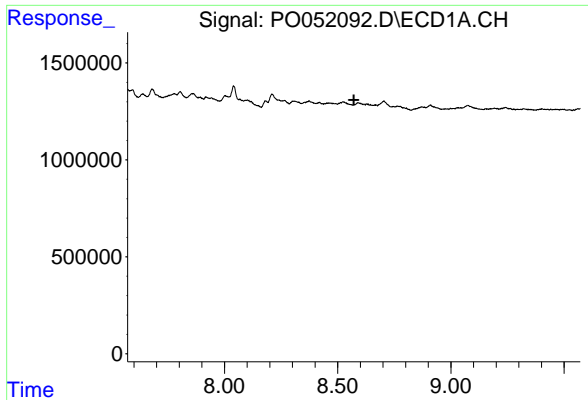
#41 AR-1268-1

R.T.: 0.000 min
 Exp R.T. : 8.481 min
 Response: 0
 Conc: N.D.



#41 AR-1268-1

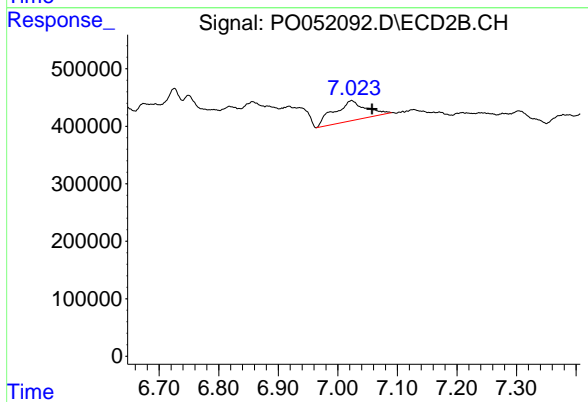
R.T.: 7.023 min
 Delta R.T.: 0.030 min
 Response: 1302919
 Conc: 11.35 ng/ml



#42 AR-1268-2

R.T.: 0.000 min
Exp R.T.: 8.571 min
Response: 0
Conc: N.D.

Instrument :
ECD_O
ClientSampleId :



#42 AR-1268-2

R.T.: 7.023 min
Delta R.T.: -0.034 min
Response: 1302919
Conc: 11.94 ng/ml