

Data Path : Z:\pestpcbsrv\HPCHEM1\ECD_0\Data\PO113018\
 Data File : PO052093.D
 Signal(s) : Signal #1: ECD1A.CH Signal #2: ECD2B.CH
 Acq On : 01 Dec 2018 7:12
 Operator : SM/SJ
 Sample : J6129-11
 Misc :
 ALS Vial : 47 Sample Multiplier: 1

Instrument :
 ECD_O
 ClientSampleId :

Integration File signal 1: autoint1.e
 Integration File signal 2: autoint2.e
 Quant Time: Dec 02 23:55:02 2018
 Quant Method : Z:\pestpcbsrv\HPCHEM1\ECD_0\methods\PO112918.M
 Quant Title : GC EXTRACTABLES
 QLast Update : Fri Nov 30 03:43:16 2018
 Response via : Initial Calibration
 Integrator: ChemStation 6890 Scale Mode: Small noise peaks clipped

Volume Inj. : 2 µl
 Signal #1 Phase : ZB-MR1 Signal #2 Phase: ZB-MR2
 Signal #1 Info : 30Mx0.32mmx 0.50µ Signal #2 Info : 30M x 0.32mm x 0.25µm

Compound	RT#1	RT#2	Resp#1	Resp#2	ng/ml	ng/ml

System Monitoring Compounds						
1) SA Tetrachlo...	4.276	3.281	52515605	13891624	21.278	15.518 #
2) SA Decachlor...	9.872	8.004	23308025	9475936	14.319	13.827
Target Compounds						
3) L1 AR-1016-1	5.441	4.296	914946	302999	16.410	15.523
4) L1 AR-1016-2	5.464	4.312	2434820	185618	28.675	4.213 #
5) L1 AR-1016-3	5.533	4.480	793233	225759	16.234	12.274
6) L1 AR-1016-4	0.000	4.520	0	128422	N.D.	8.619 #
7) L1 AR-1016-5	5.917	4.725	430573	293750	11.829	16.266 #
8) L2 AR-1221-1	4.437	0.000	335239	0	16.776	N.D. #
9) L2 AR-1221-2	4.572	3.560	335176	178317	23.474	33.130 #
10) L2 AR-1221-3	4.666	3.633	3054160	168564	67.608	9.704 #
11) L3 AR-1232-1	4.666	3.633	3054160	168564	82.600	11.983 #
12) L3 AR-1232-2	5.166	4.312	410800	185618	24.553	10.751 #
13) L3 AR-1232-3	5.464	4.480	2434820	225759	72.771	31.572 #
14) L3 AR-1232-4	0.000	4.551	0	526819	N.D.	88.056 #
15) L3 AR-1232-5	5.709	4.725	977767	293750	91.491	43.725 #
16) L4 AR-1242-1	5.441	4.296	914946	302999	21.653	20.602
17) L4 AR-1242-2	5.464	4.312	2434820	185618	37.841	5.711 #
18) L4 AR-1242-3	5.533	4.480	793233	225759	21.398	16.507
19) L4 AR-1242-4	0.000	4.551	0	526819	N.D.	41.730 #
20) L4 AR-1242-5	6.352	5.051	390547	254542	13.144	15.542
21) L5 AR-1248-1	5.441	4.296	914946	302999	29.487	25.067
22) L5 AR-1248-2	5.709	4.520	977767	128422	24.371	7.203 #
23) L5 AR-1248-3	5.917	4.551	430573	526819	9.600	29.436 #
24) L5 AR-1248-4	6.352	4.725	390547	293750	7.901	13.551 #
25) L5 AR-1248-5	6.352	5.084	390547	208440	8.325	9.719
26) L6 AR-1254-1	6.263	5.051	743497	254542	13.810	7.099 #
27) L6 AR-1254-2	6.513	5.234	1982113	80883	23.457	2.621 #
28) L6 AR-1254-3	6.882	5.570	1772271	974040	19.522	19.709
29) L6 AR-1254-4	7.158	5.860	960660	221003	13.703	7.181 #
30) L6 AR-1254-5	7.573	6.191	648217	76117	8.597	1.720 #
31) L7 AR-1260-1	7.031	5.707	1526611	117271	21.669	3.344 #
32) L7 AR-1260-2	7.285	5.860	1703944	221003	18.314	5.083 #
33) L7 AR-1260-3	7.681	6.023	784992	165346	11.990	4.113 #
34) L7 AR-1260-4	7.854	6.523	409860	214419	5.855	7.749 #
35) L7 AR-1260-5	8.181	6.748	314017	270212	1.908	3.748 #
36) L8 AR-1262-1	7.681	6.191	784992	76117	7.517	1.662 #
37) L8 AR-1262-2	8.181	6.748	314017	270212	1.598	3.258 #
38) L8 AR-1262-3	0.000	6.984	0	181422	N.D.	5.461 #
39) L8 AR-1262-4	0.000	7.063	0	32533	N.D.	0.532 #
41) L9 AR-1268-1	0.000	6.984	0	181422	N.D.	1.580 #
42) L9 AR-1268-2	0.000	7.063	0	32533	N.D.	0.298 #

Data Path : Z:\pestpcbsrv\HPCHEM1\ECD_0\Data\PO113018\
Data File : PO052093.D
Signal(s) : Signal #1: ECD1A.CH Signal #2: ECD2B.CH
Acq On : 01 Dec 2018 7:12
Operator : SM/SJ
Sample : J6129-11
Misc :
ALS Vial : 47 Sample Multiplier: 1

Instrument :
ECD_O
ClientSampleId :

Integration File signal 1: autoint1.e
Integration File signal 2: autoint2.e
Quant Time: Dec 02 23:55:02 2018
Quant Method : Z:\pestpcbsrv\HPCHEM1\ECD_0\methods\PO112918.M
Quant Title : GC EXTRACTABLES
QLast Update : Fri Nov 30 03:43:16 2018
Response via : Initial Calibration
Integrator: ChemStation 6890 Scale Mode: Small noise peaks clipped

Volume Inj. : 2 µl
Signal #1 Phase : ZB-MR1 Signal #2 Phase: ZB-MR2
Signal #1 Info : 30Mx0.32mmx 0.50µ Signal #2 Info : 30M x 0.32mm x 0.25µm

Compound	RT#1	RT#2	Resp#1	Resp#2	ng/ml	ng/ml
----------	------	------	--------	--------	-------	-------

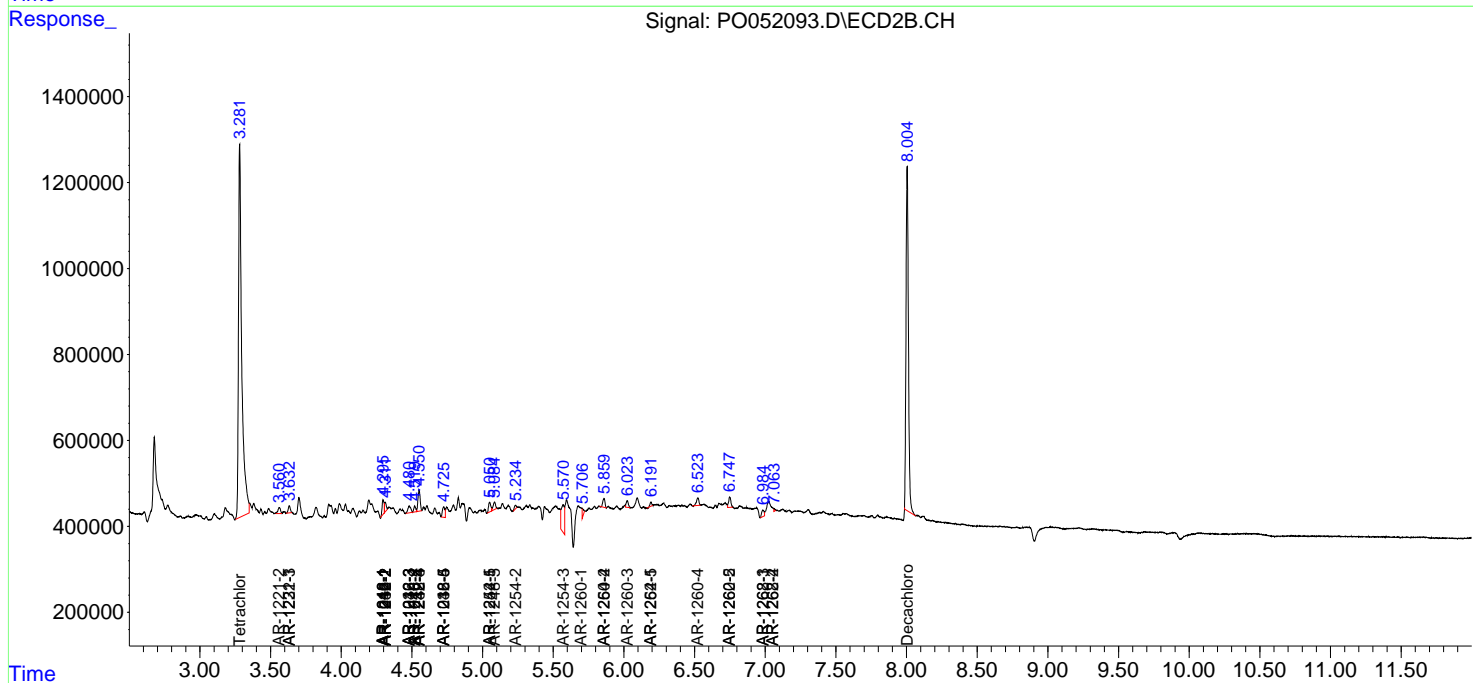
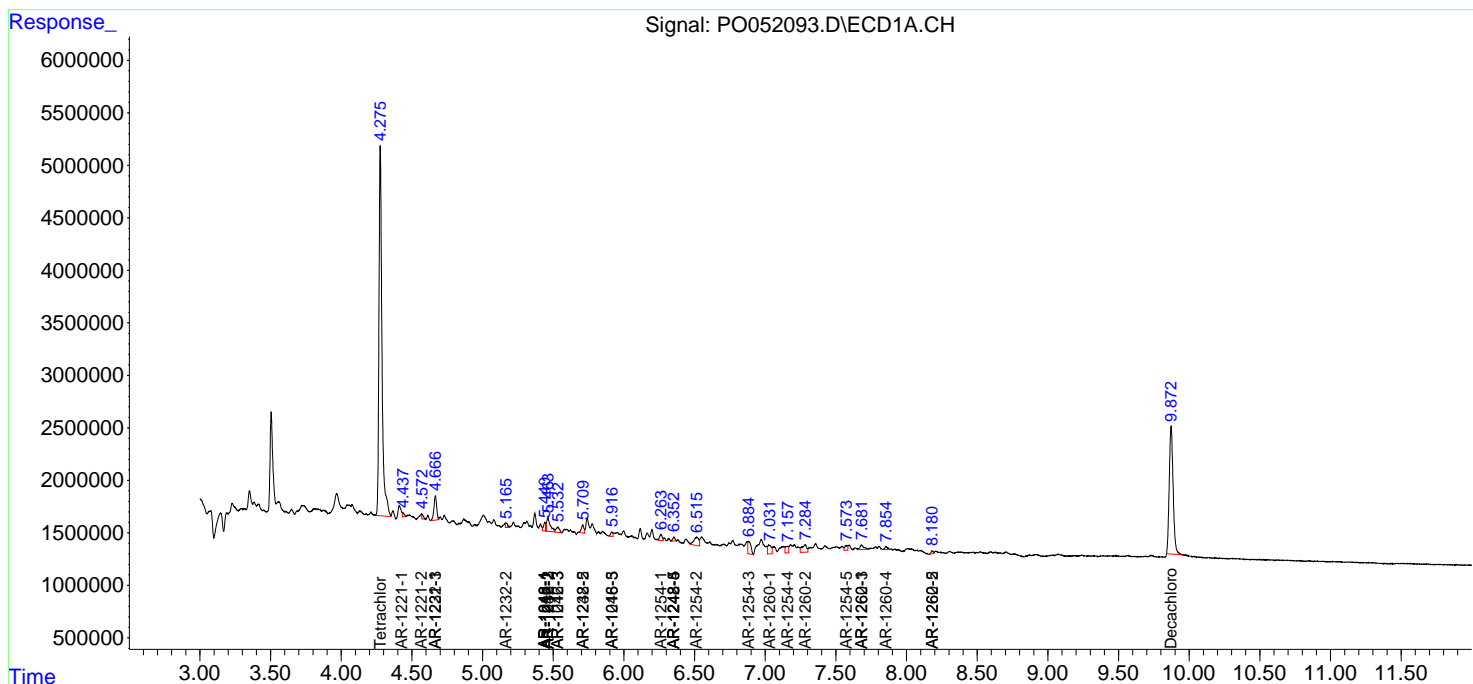
(f)=RT Delta > 1/2 Window (#)=Amounts differ by > 25% (m)=manual int.

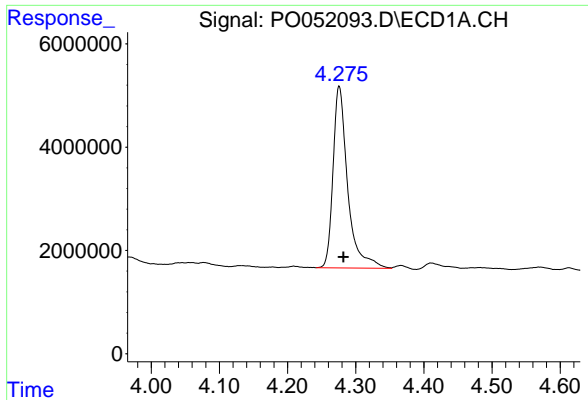
Data Path : Z:\pestpcbsrv\HPCHEM1\ECD_0\Data\PO113018\
 Data File : PO052093.D
 Signal(s) : Signal #1: ECD1A.CH Signal #2: ECD2B.CH
 Acq On : 01 Dec 2018 7:12
 Operator : SM/SJ
 Sample : J6129-11
 Misc :
 ALS Vial : 47 Sample Multiplier: 1

Instrument :
 ECD_O
 ClientSampled :

Integration File signal 1: autoint1.e
 Integration File signal 2: autoint2.e
 Quant Time: Dec 02 23:55:02 2018
 Quant Method : Z:\pestpcbsrv\HPCHEM1\ECD_0\methods\PO112918.M
 Quant Title : GC EXTRACTABLES
 QLast Update : Fri Nov 30 03:43:16 2018
 Response via : Initial Calibration
 Integrator: ChemStation 6890 Scale Mode: Small noise peaks clipped

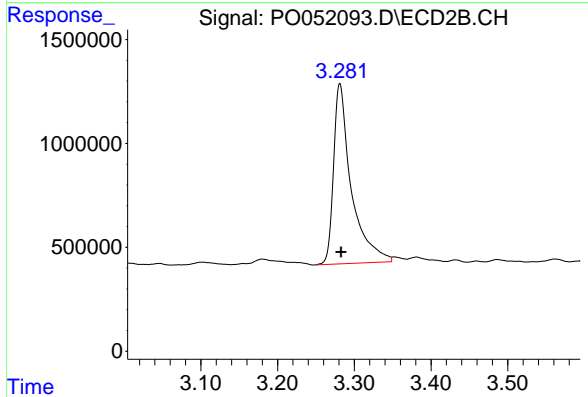
Volume Inj. : 2 µl
 Signal #1 Phase : ZB-MR1 Signal #2 Phase: ZB-MR2
 Signal #1 Info : 30Mx0.32mmx 0.50µ Signal #2 Info : 30M x 0.32mm x 0.25µm



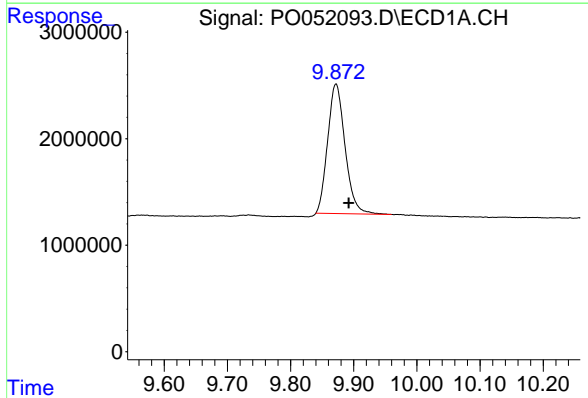


#1 Tetrachloro-m-xylene
 R.T.: 4.276 min
 Delta R.T.: -0.006 min
 Response: 52515605
 Conc: 21.28 ng/ml

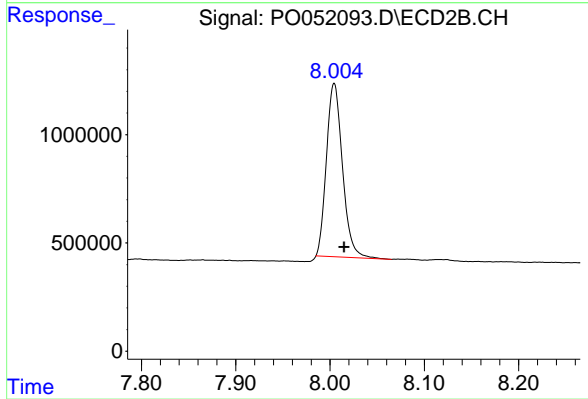
Instrument :
 ECD_O
 ClientSampled :



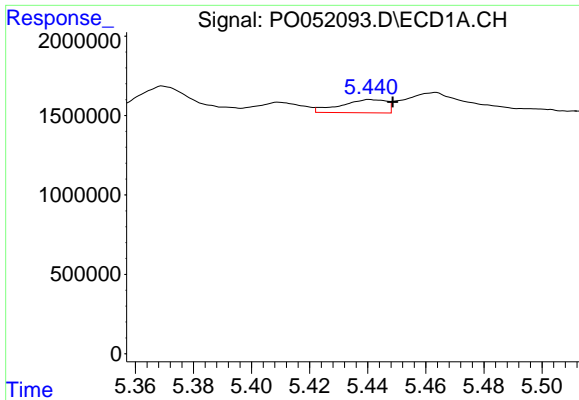
#1 Tetrachloro-m-xylene
 R.T.: 3.281 min
 Delta R.T.: -0.002 min
 Response: 13891624
 Conc: 15.52 ng/ml



#2 Decachlorobiphenyl
 R.T.: 9.872 min
 Delta R.T.: -0.020 min
 Response: 23308025
 Conc: 14.32 ng/ml



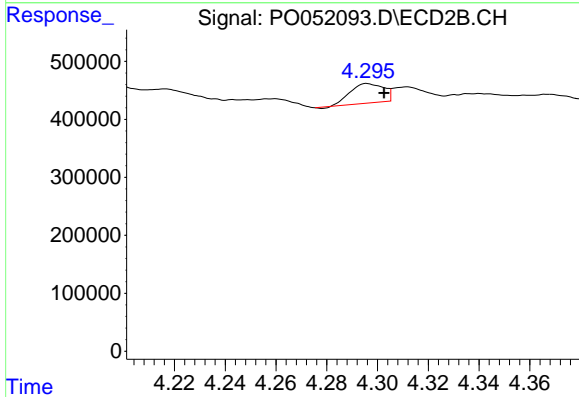
#2 Decachlorobiphenyl
 R.T.: 8.004 min
 Delta R.T.: -0.010 min
 Response: 9475936
 Conc: 13.83 ng/ml



#3 AR-1016-1

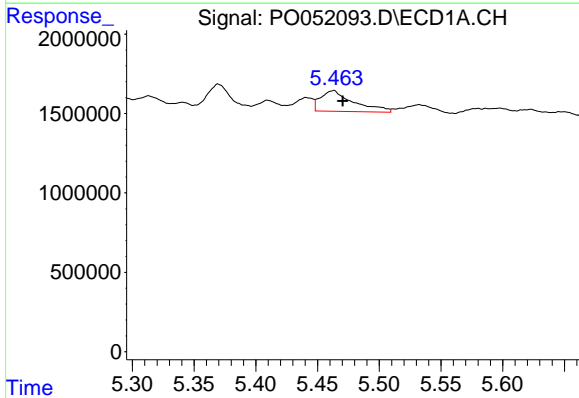
R.T.: 5.441 min
 Delta R.T.: -0.008 min
 Response: 914946
 Conc: 16.41 ng/ml

Instrument :
 ECD_O
 ClientSampled :



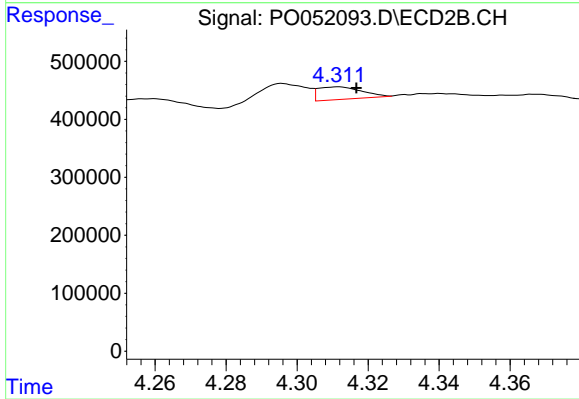
#3 AR-1016-1

R.T.: 4.296 min
 Delta R.T.: -0.007 min
 Response: 302999
 Conc: 15.52 ng/ml



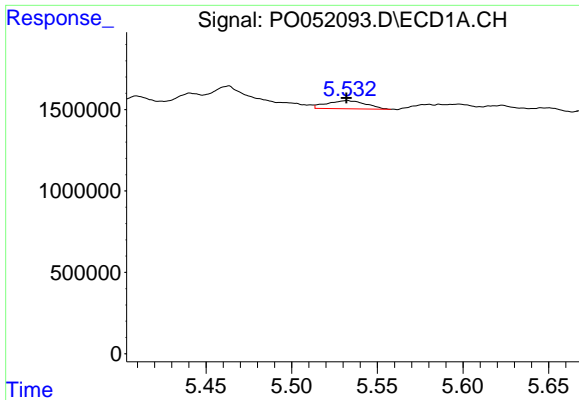
#4 AR-1016-2

R.T.: 5.464 min
 Delta R.T.: -0.007 min
 Response: 2434820
 Conc: 28.68 ng/ml



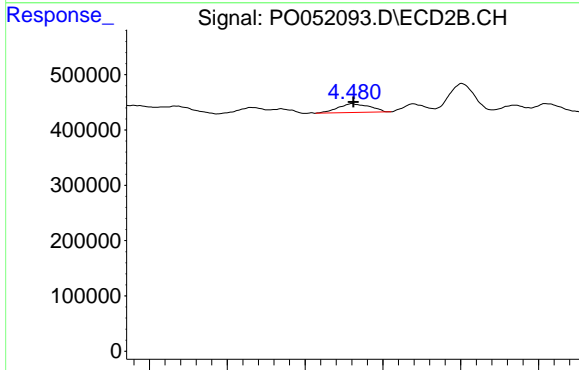
#4 AR-1016-2

R.T.: 4.312 min
 Delta R.T.: -0.005 min
 Response: 185618
 Conc: 4.21 ng/ml

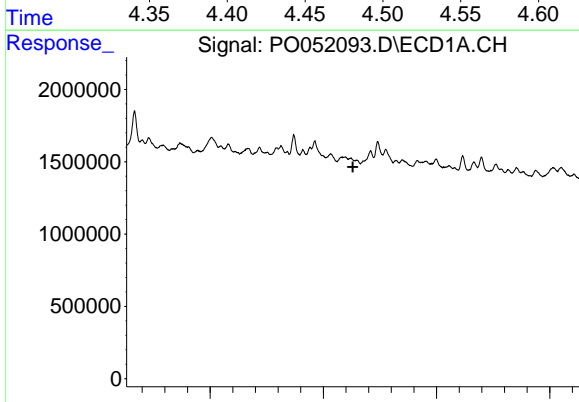


#5 AR-1016-3
 R.T.: 5.533 min
 Delta R.T.: 0.000 min
 Response: 793233
 Conc: 16.23 ng/ml

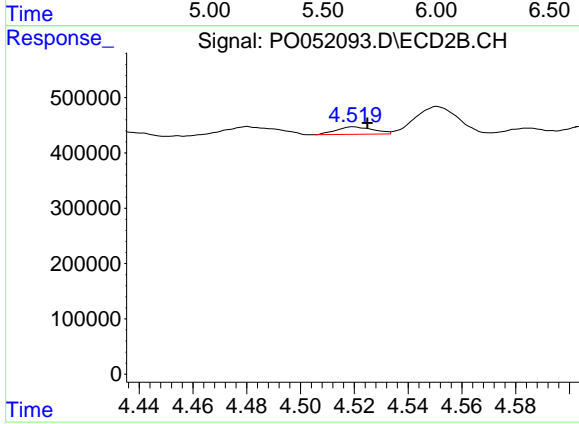
Instrument :
 ECD_O
 ClientSampled :



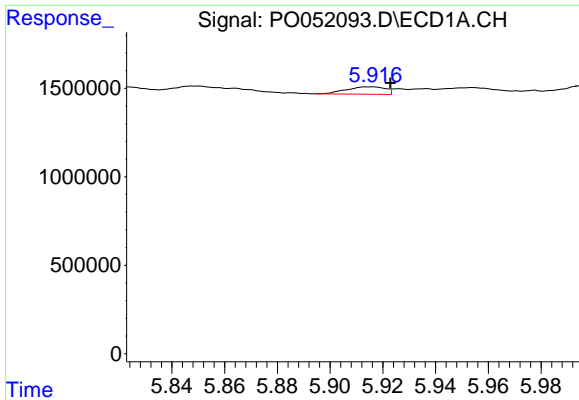
#5 AR-1016-3
 R.T.: 4.480 min
 Delta R.T.: 0.000 min
 Response: 225759
 Conc: 12.27 ng/ml



#6 AR-1016-4
 R.T.: 0.000 min
 Exp R.T. : 5.631 min
 Response: 0
 Conc: N.D.



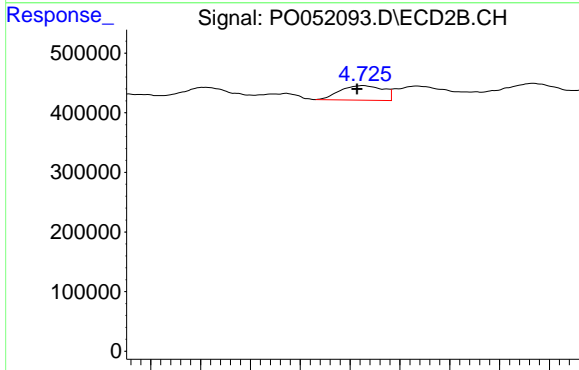
#6 AR-1016-4
 R.T.: 4.520 min
 Delta R.T.: -0.005 min
 Response: 128422
 Conc: 8.62 ng/ml



#7 AR-1016-5

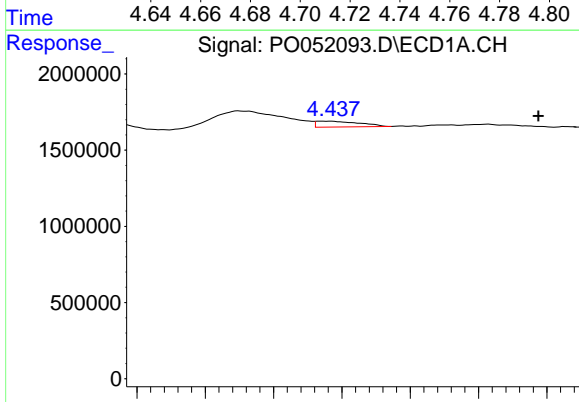
R.T.: 5.917 min
 Delta R.T.: -0.006 min
 Response: 430573
 Conc: 11.83 ng/ml

Instrument :
 ECD_O
 ClientSampleId :



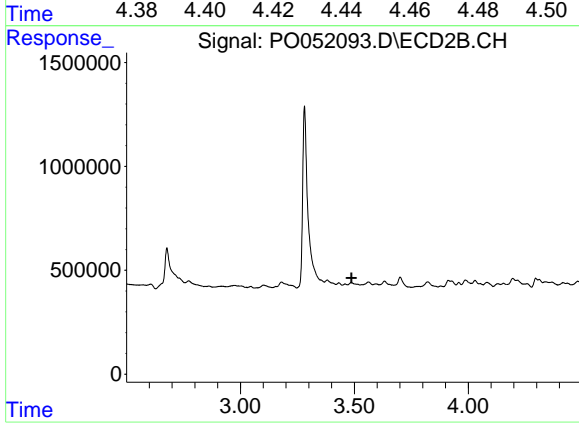
#7 AR-1016-5

R.T.: 4.725 min
 Delta R.T.: 0.003 min
 Response: 293750
 Conc: 16.27 ng/ml



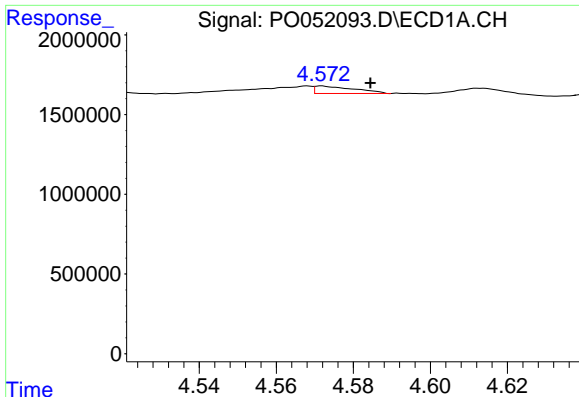
#8 AR-1221-1

R.T.: 4.437 min
 Delta R.T.: -0.061 min
 Response: 335239
 Conc: 16.78 ng/ml



#8 AR-1221-1

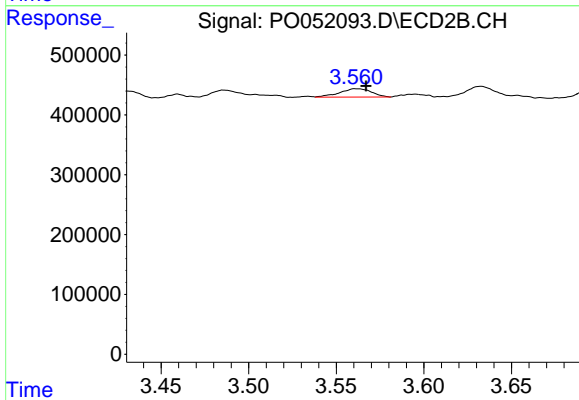
R.T.: 0.000 min
 Exp R.T. : 3.488 min
 Response: 0
 Conc: N.D.



#9 AR-1221-2

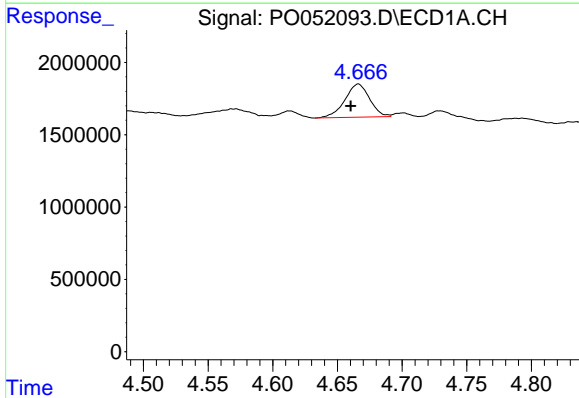
R.T.: 4.572 min
 Delta R.T.: -0.013 min
 Response: 335176
 Conc: 23.47 ng/ml

Instrument :
 ECD_O
 ClientSampleId :



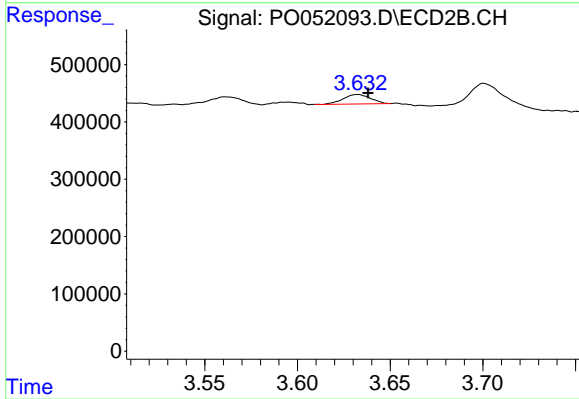
#9 AR-1221-2

R.T.: 3.560 min
 Delta R.T.: -0.006 min
 Response: 178317
 Conc: 33.13 ng/ml



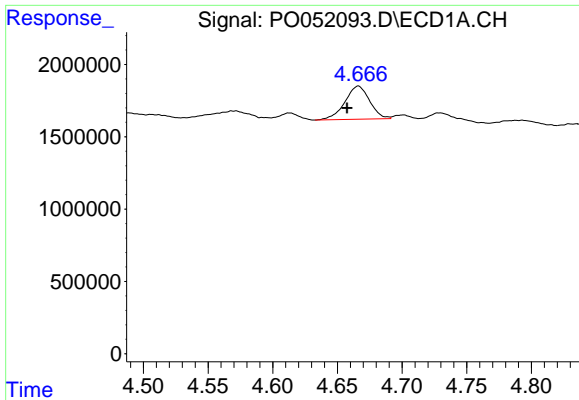
#10 AR-1221-3

R.T.: 4.666 min
 Delta R.T.: 0.006 min
 Response: 3054160
 Conc: 67.61 ng/ml



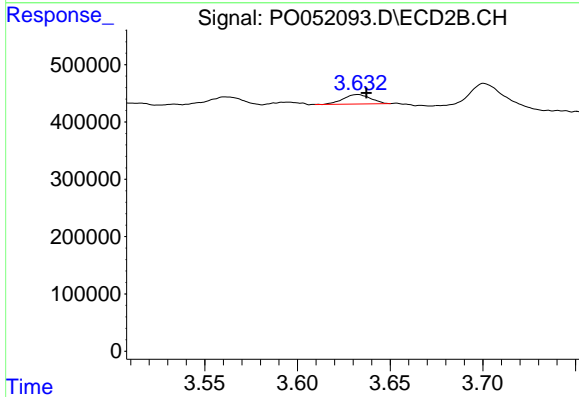
#10 AR-1221-3

R.T.: 3.633 min
 Delta R.T.: -0.005 min
 Response: 168564
 Conc: 9.70 ng/ml

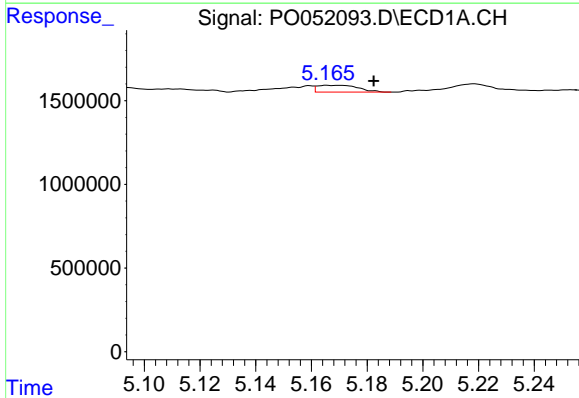


#11 AR-1232-1
 R.T.: 4.666 min
 Delta R.T.: 0.009 min
 Response: 3054160
 Conc: 82.60 ng/ml

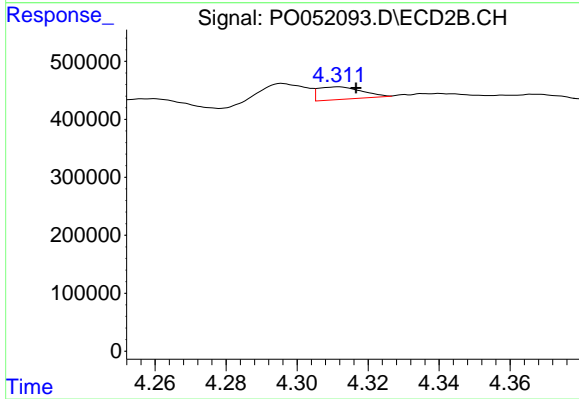
Instrument :
 ECD_O
 ClientSampleId :



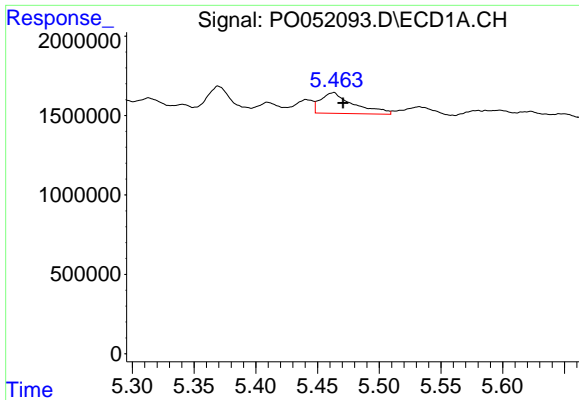
#11 AR-1232-1
 R.T.: 3.633 min
 Delta R.T.: -0.004 min
 Response: 168564
 Conc: 11.98 ng/ml



#12 AR-1232-2
 R.T.: 5.166 min
 Delta R.T.: -0.017 min
 Response: 410800
 Conc: 24.55 ng/ml



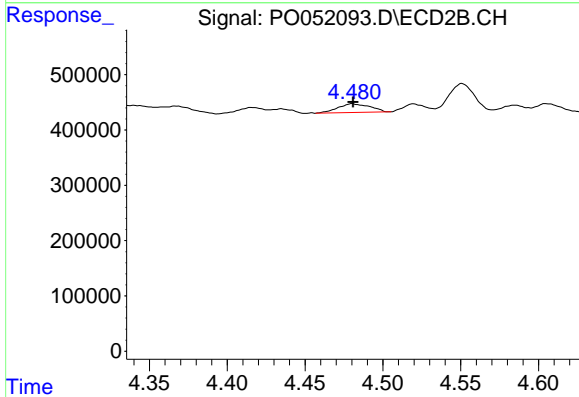
#12 AR-1232-2
 R.T.: 4.312 min
 Delta R.T.: -0.005 min
 Response: 185618
 Conc: 10.75 ng/ml



#13 AR-1232-3

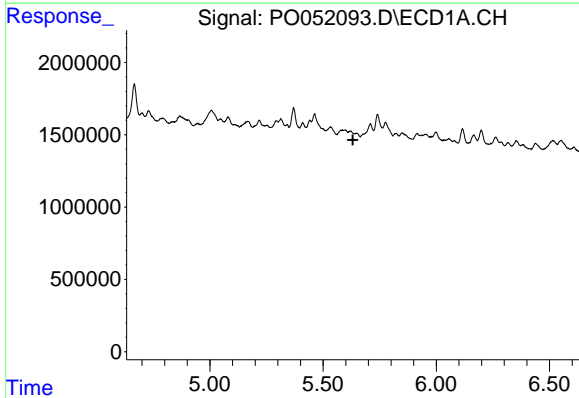
R.T.: 5.464 min
 Delta R.T.: -0.007 min
 Response: 2434820
 Conc: 72.77 ng/ml

Instrument :
 ECD_O
 ClientSampled :



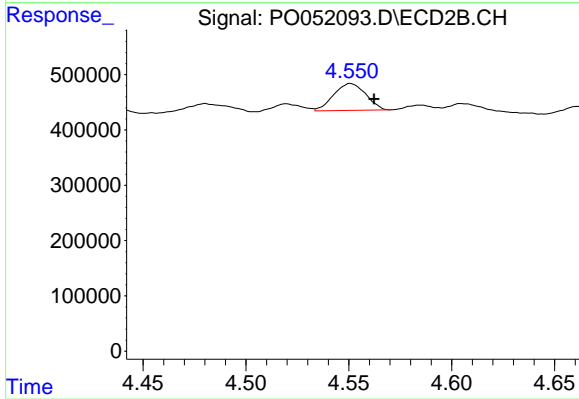
#13 AR-1232-3

R.T.: 4.480 min
 Delta R.T.: 0.000 min
 Response: 225759
 Conc: 31.57 ng/ml



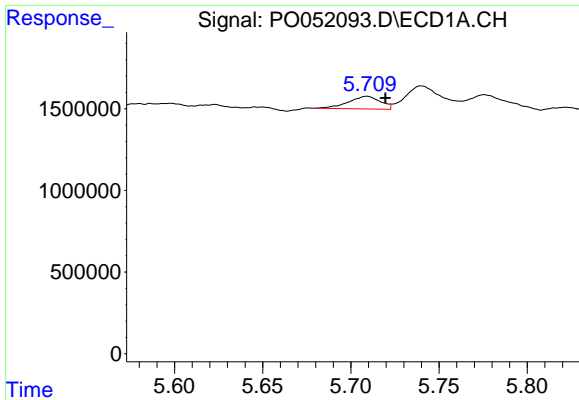
#14 AR-1232-4

R.T.: 0.000 min
 Exp R.T. : 5.631 min
 Response: 0
 Conc: N.D.



#14 AR-1232-4

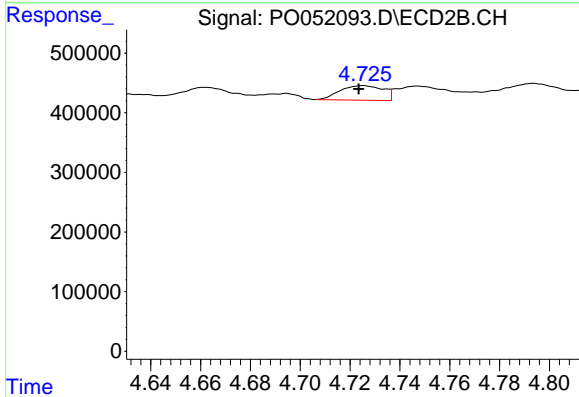
R.T.: 4.551 min
 Delta R.T.: -0.012 min
 Response: 526819
 Conc: 88.06 ng/ml



#15 AR-1232-5

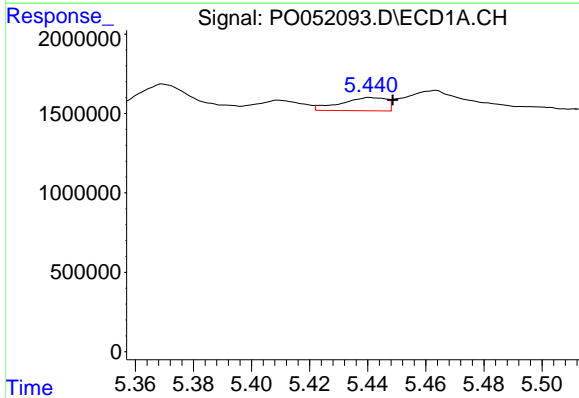
R.T.: 5.709 min
 Delta R.T.: -0.010 min
 Response: 977767
 Conc: 91.49 ng/ml

Instrument :
 ECD_O
 ClientSampleId :



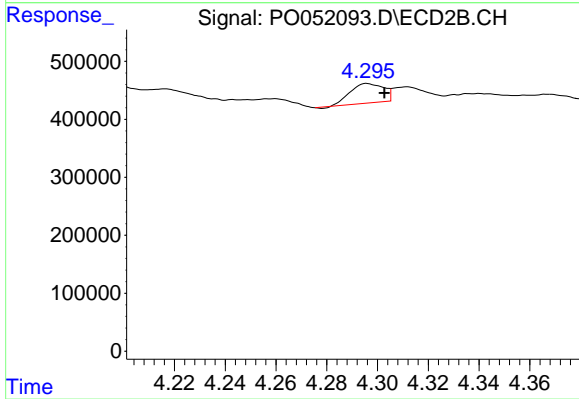
#15 AR-1232-5

R.T.: 4.725 min
 Delta R.T.: 0.002 min
 Response: 293750
 Conc: 43.73 ng/ml



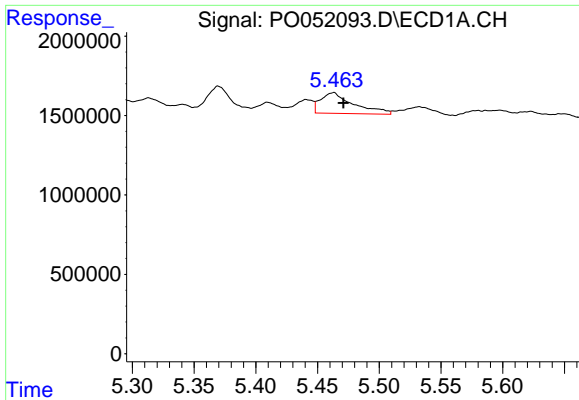
#16 AR-1242-1

R.T.: 5.441 min
 Delta R.T.: -0.008 min
 Response: 914946
 Conc: 21.65 ng/ml



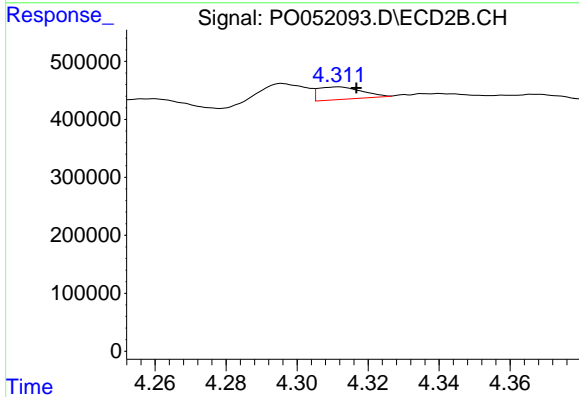
#16 AR-1242-1

R.T.: 4.296 min
 Delta R.T.: -0.007 min
 Response: 302999
 Conc: 20.60 ng/ml

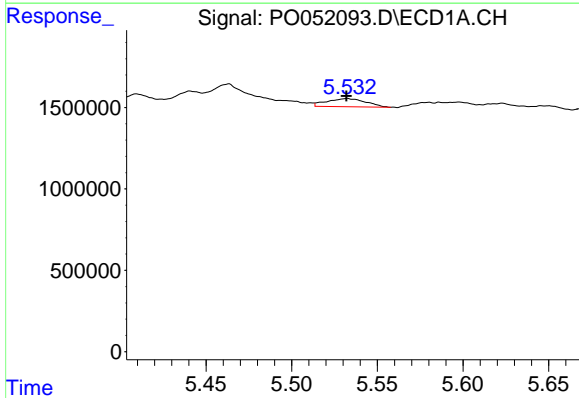


#17 AR-1242-2
 R.T.: 5.464 min
 Delta R.T.: -0.008 min
 Response: 2434820
 Conc: 37.84 ng/ml

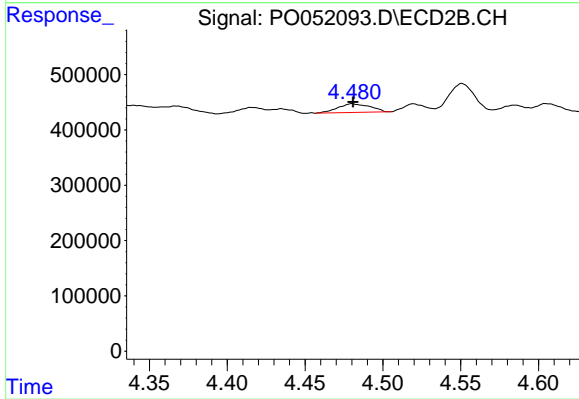
Instrument :
 ECD_O
 ClientSampled :



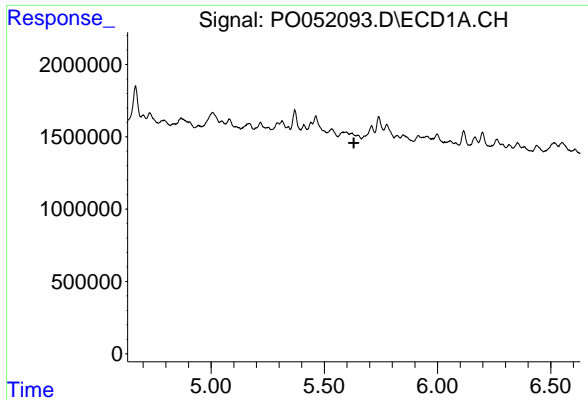
#17 AR-1242-2
 R.T.: 4.312 min
 Delta R.T.: -0.005 min
 Response: 185618
 Conc: 5.71 ng/ml



#18 AR-1242-3
 R.T.: 5.533 min
 Delta R.T.: 0.000 min
 Response: 793233
 Conc: 21.40 ng/ml



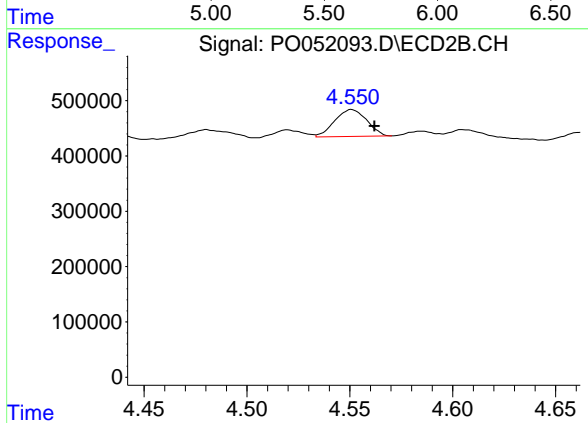
#18 AR-1242-3
 R.T.: 4.480 min
 Delta R.T.: 0.000 min
 Response: 225759
 Conc: 16.51 ng/ml



#19 AR-1242-4

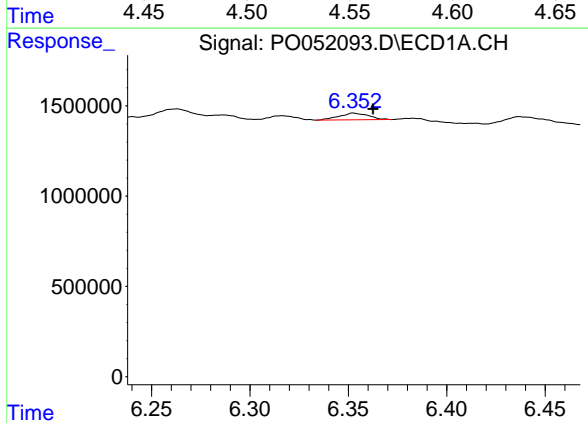
R.T.: 0.000 min
 Exp R.T.: 5.631 min
 Response: 0
 Conc: N.D.

Instrument :
 ECD_O
 ClientSampled :



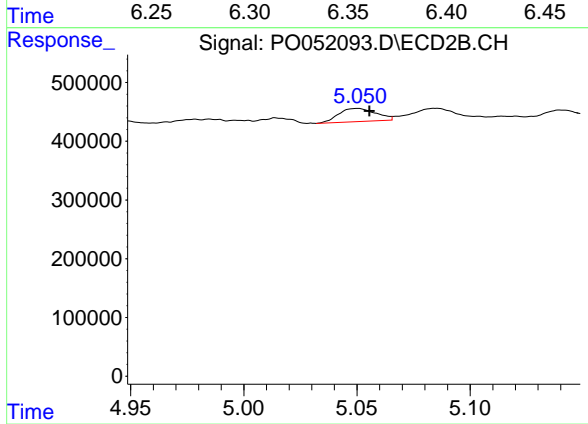
#19 AR-1242-4

R.T.: 4.551 min
 Delta R.T.: -0.011 min
 Response: 526819
 Conc: 41.73 ng/ml



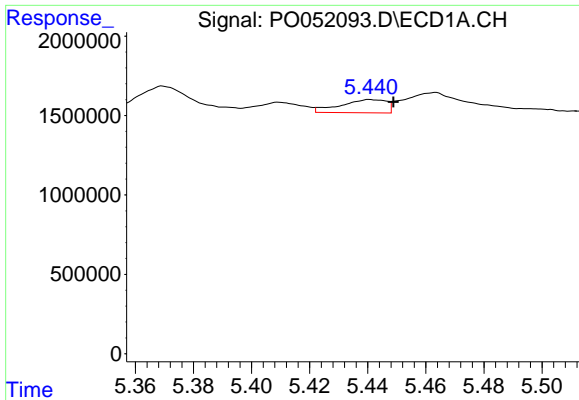
#20 AR-1242-5

R.T.: 6.352 min
 Delta R.T.: -0.010 min
 Response: 390547
 Conc: 13.14 ng/ml



#20 AR-1242-5

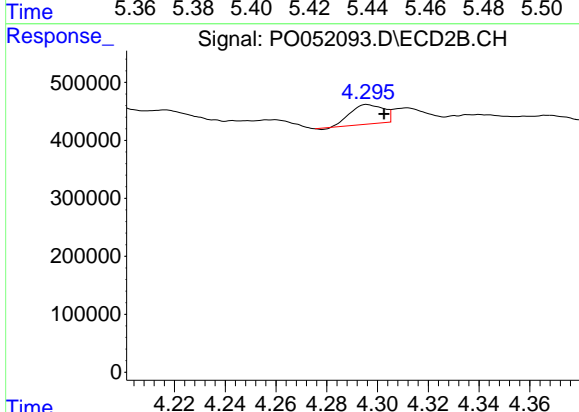
R.T.: 5.051 min
 Delta R.T.: -0.005 min
 Response: 254542
 Conc: 15.54 ng/ml



#21 AR-1248-1

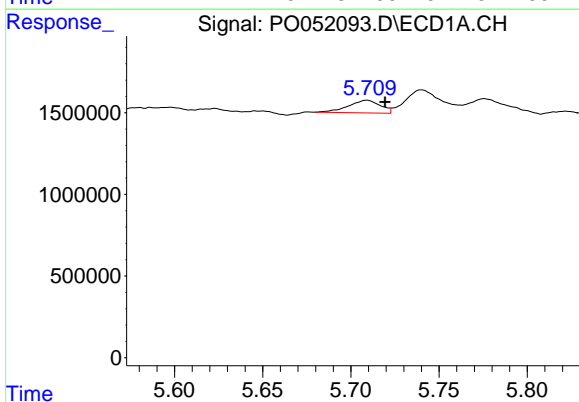
R.T.: 5.441 min
 Delta R.T.: -0.008 min
 Response: 914946
 Conc: 29.49 ng/ml

Instrument :
 ECD_O
 ClientSampled :



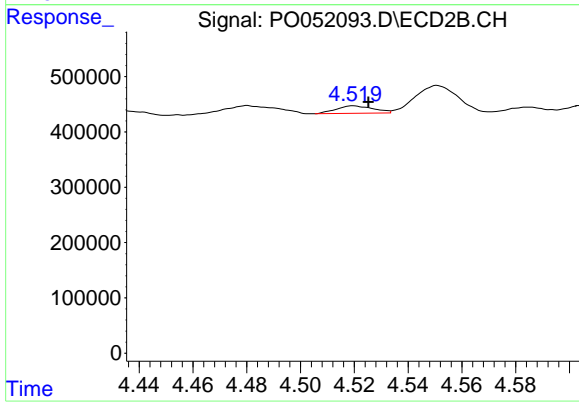
#21 AR-1248-1

R.T.: 4.296 min
 Delta R.T.: -0.007 min
 Response: 302999
 Conc: 25.07 ng/ml



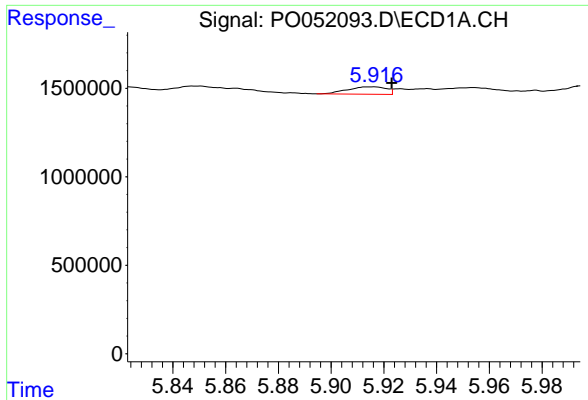
#22 AR-1248-2

R.T.: 5.709 min
 Delta R.T.: -0.010 min
 Response: 977767
 Conc: 24.37 ng/ml



#22 AR-1248-2

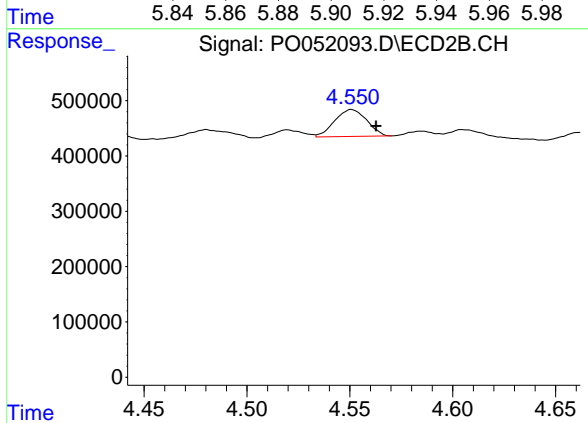
R.T.: 4.520 min
 Delta R.T.: -0.005 min
 Response: 128422
 Conc: 7.20 ng/ml



#23 AR-1248-3

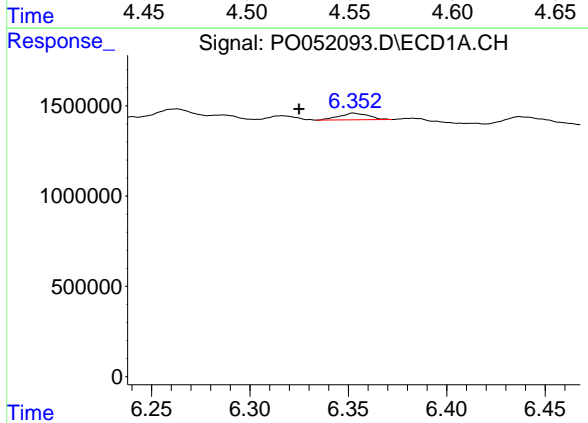
R.T.: 5.917 min
 Delta R.T.: -0.006 min
 Response: 430573
 Conc: 9.60 ng/ml

Instrument :
 ECD_O
 ClientSampleId :



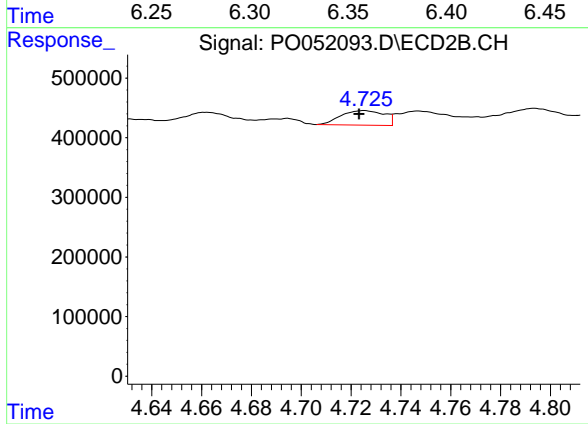
#23 AR-1248-3

R.T.: 4.551 min
 Delta R.T.: -0.012 min
 Response: 526819
 Conc: 29.44 ng/ml



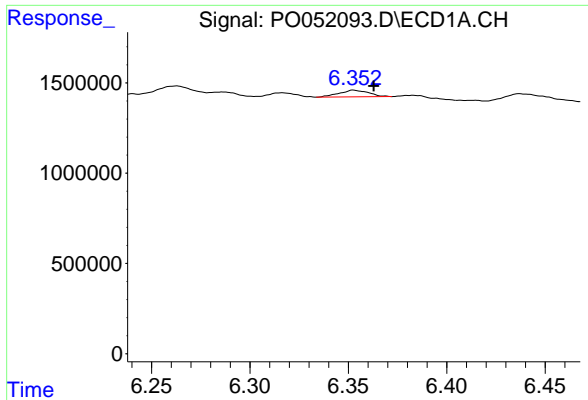
#24 AR-1248-4

R.T.: 6.352 min
 Delta R.T.: 0.027 min
 Response: 390547
 Conc: 7.90 ng/ml



#24 AR-1248-4

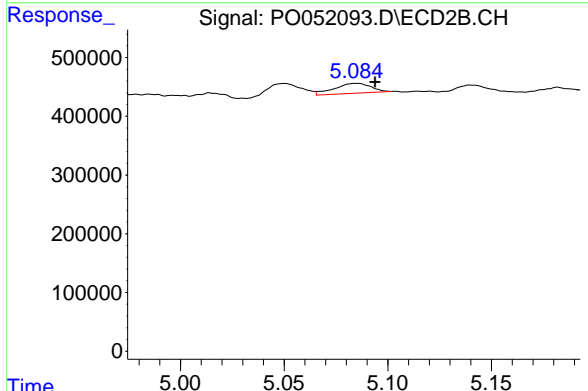
R.T.: 4.725 min
 Delta R.T.: 0.002 min
 Response: 293750
 Conc: 13.55 ng/ml



#25 AR-1248-5

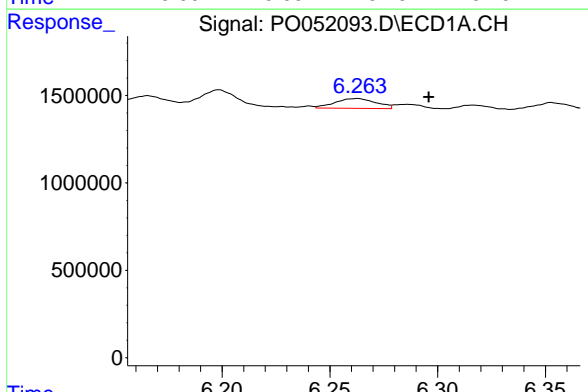
R.T.: 6.352 min
 Delta R.T.: -0.010 min
 Response: 390547
 Conc: 8.32 ng/ml

Instrument :
 ECD_O
 ClientSampled :



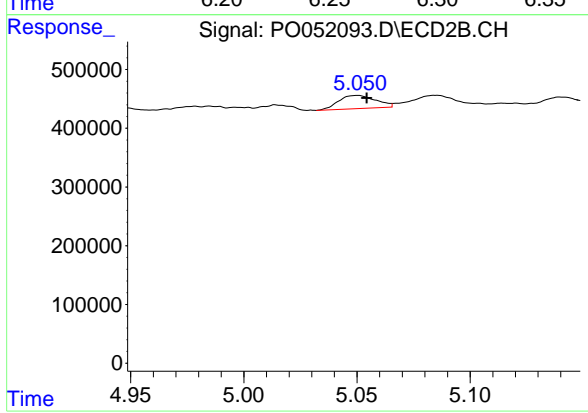
#25 AR-1248-5

R.T.: 5.084 min
 Delta R.T.: -0.010 min
 Response: 208440
 Conc: 9.72 ng/ml



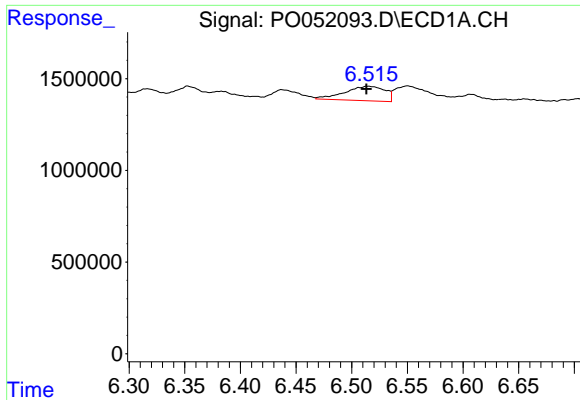
#26 AR-1254-1

R.T.: 6.263 min
 Delta R.T.: -0.033 min
 Response: 743497
 Conc: 13.81 ng/ml



#26 AR-1254-1

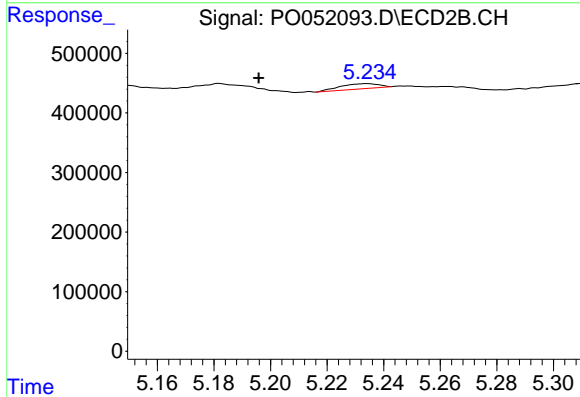
R.T.: 5.051 min
 Delta R.T.: -0.004 min
 Response: 254542
 Conc: 7.10 ng/ml



#27 AR-1254-2

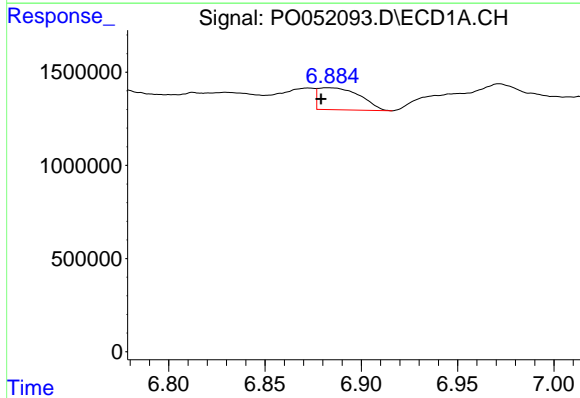
R.T.: 6.513 min
 Delta R.T.: 0.000 min
 Response: 1982113
 Conc: 23.46 ng/ml

Instrument :
 ECD_O
 ClientSampleId :



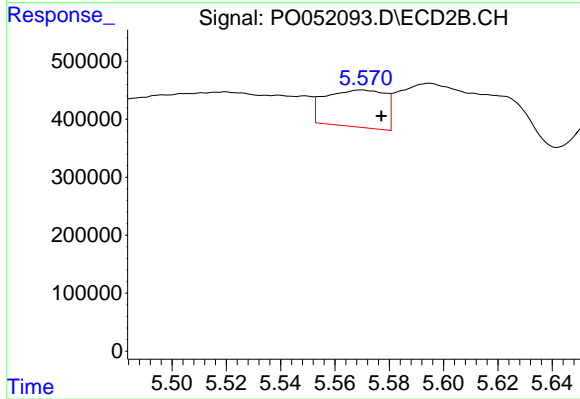
#27 AR-1254-2

R.T.: 5.234 min
 Delta R.T.: 0.038 min
 Response: 80883
 Conc: 2.62 ng/ml



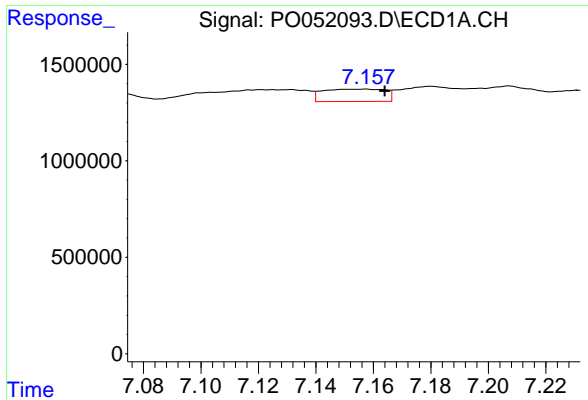
#28 AR-1254-3

R.T.: 6.882 min
 Delta R.T.: 0.003 min
 Response: 1772271
 Conc: 19.52 ng/ml



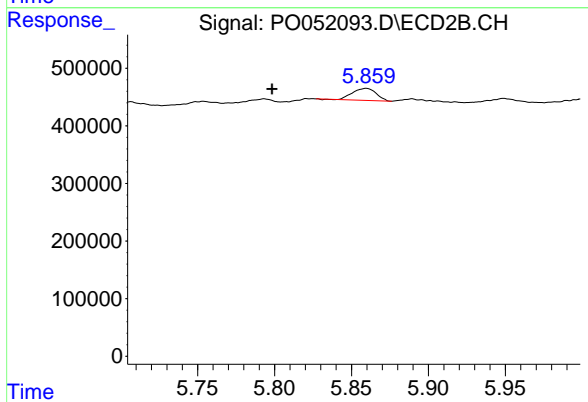
#28 AR-1254-3

R.T.: 5.570 min
 Delta R.T.: -0.007 min
 Response: 974040
 Conc: 19.71 ng/ml

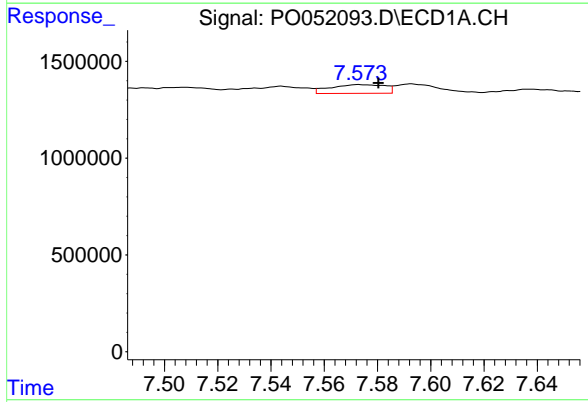


#29 AR-1254-4
 R.T.: 7.158 min
 Delta R.T.: -0.006 min
 Response: 960660
 Conc: 13.70 ng/ml

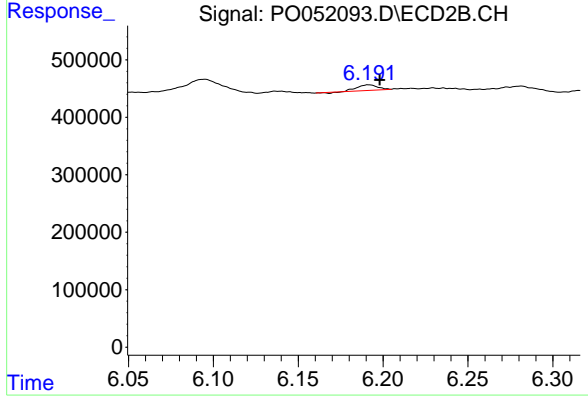
Instrument :
 ECD_O
 ClientSampled :



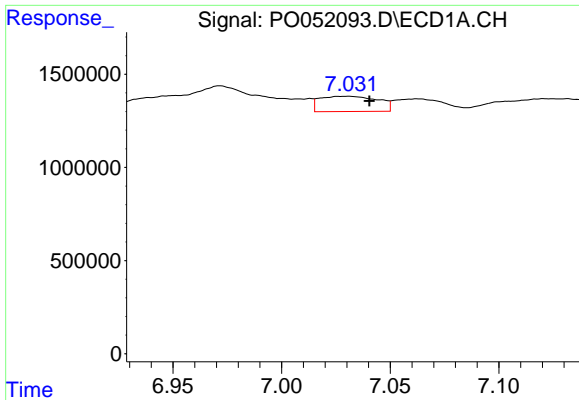
#29 AR-1254-4
 R.T.: 5.860 min
 Delta R.T.: 0.061 min
 Response: 221003
 Conc: 7.18 ng/ml



#30 AR-1254-5
 R.T.: 7.573 min
 Delta R.T.: -0.007 min
 Response: 648217
 Conc: 8.60 ng/ml



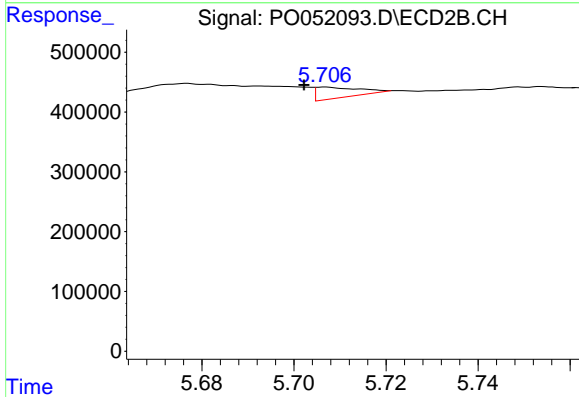
#30 AR-1254-5
 R.T.: 6.191 min
 Delta R.T.: -0.007 min
 Response: 76117
 Conc: 1.72 ng/ml



#31 AR-1260-1

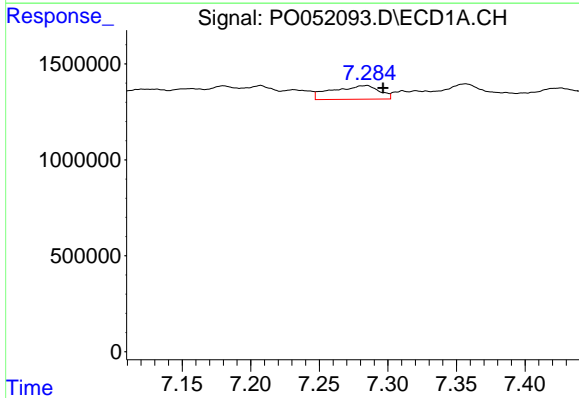
R.T.: 7.031 min
 Delta R.T.: -0.009 min
 Response: 1526611
 Conc: 21.67 ng/ml

Instrument :
 ECD_O
 ClientSampleId :



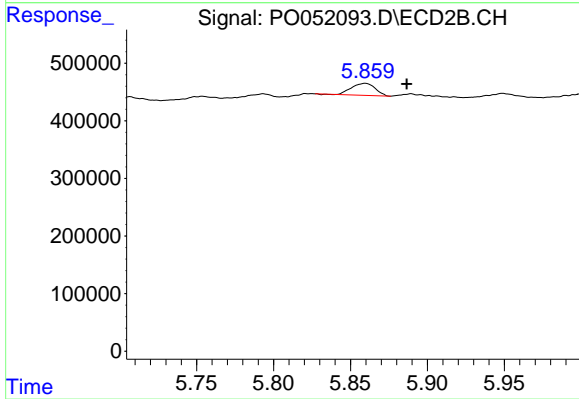
#31 AR-1260-1

R.T.: 5.707 min
 Delta R.T.: 0.005 min
 Response: 117271
 Conc: 3.34 ng/ml



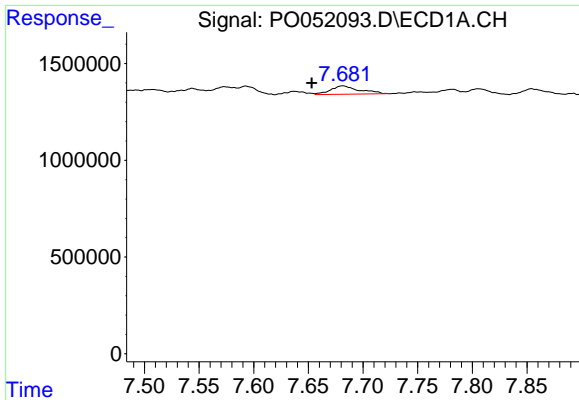
#32 AR-1260-2

R.T.: 7.285 min
 Delta R.T.: -0.011 min
 Response: 1703944
 Conc: 18.31 ng/ml



#32 AR-1260-2

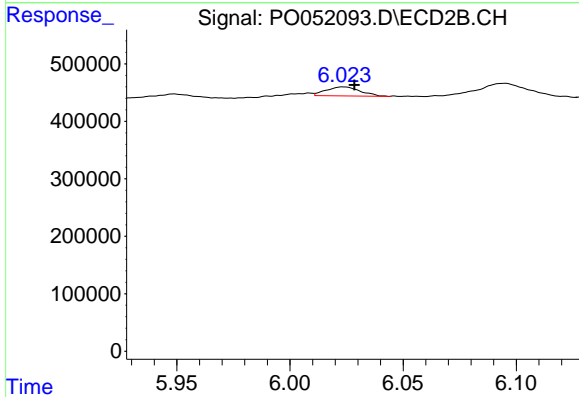
R.T.: 5.860 min
 Delta R.T.: -0.027 min
 Response: 221003
 Conc: 5.08 ng/ml



#33 AR-1260-3

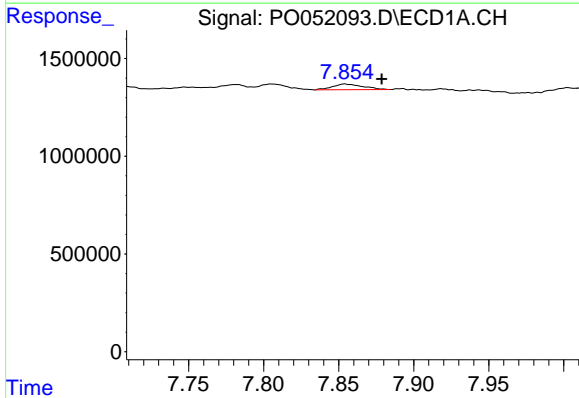
R.T.: 7.681 min
 Delta R.T.: 0.029 min
 Response: 784992
 Conc: 11.99 ng/ml

Instrument :
 ECD_O
 ClientSampleId :



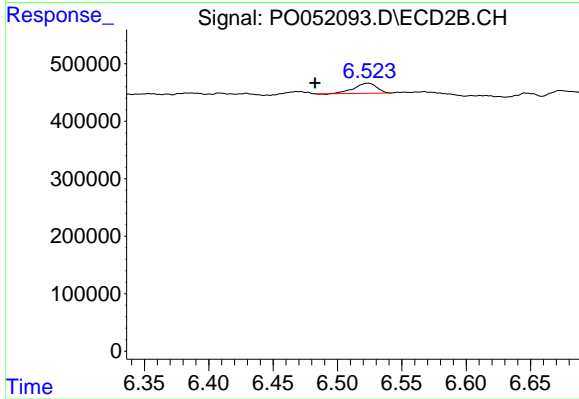
#33 AR-1260-3

R.T.: 6.023 min
 Delta R.T.: -0.005 min
 Response: 165346
 Conc: 4.11 ng/ml



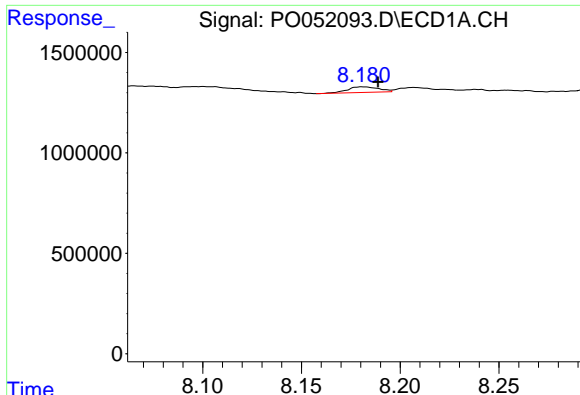
#34 AR-1260-4

R.T.: 7.854 min
 Delta R.T.: -0.025 min
 Response: 409860
 Conc: 5.86 ng/ml



#34 AR-1260-4

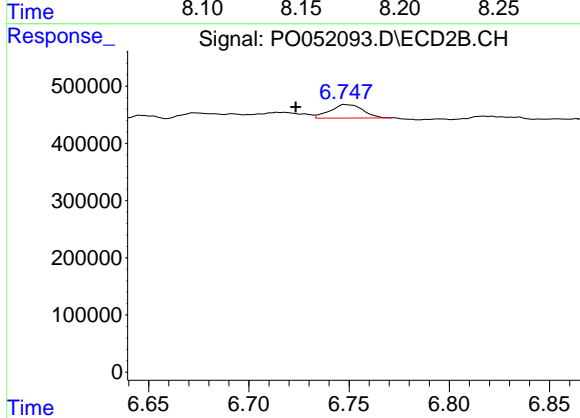
R.T.: 6.523 min
 Delta R.T.: 0.041 min
 Response: 214419
 Conc: 7.75 ng/ml



#35 AR-1260-5

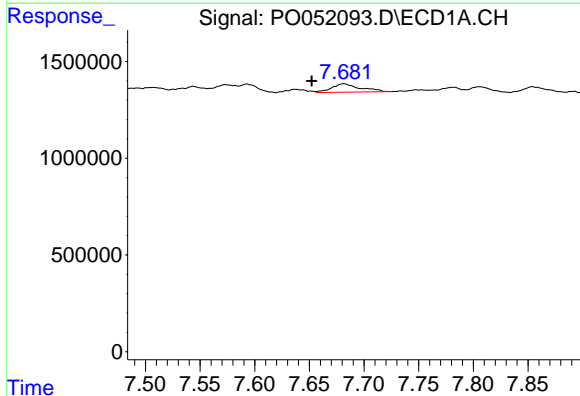
R.T.: 8.181 min
 Delta R.T.: -0.008 min
 Response: 314017
 Conc: 1.91 ng/ml

Instrument :
 ECD_O
 ClientSampleId :



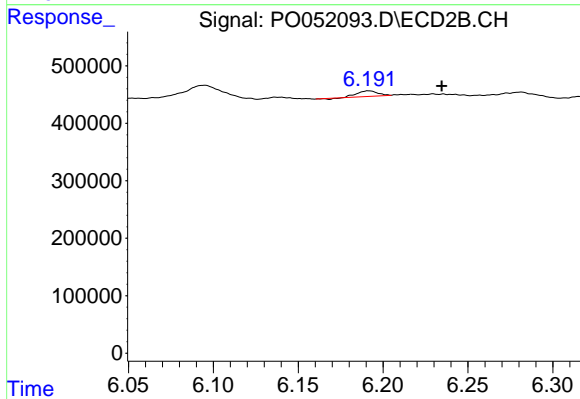
#35 AR-1260-5

R.T.: 6.748 min
 Delta R.T.: 0.024 min
 Response: 270212
 Conc: 3.75 ng/ml



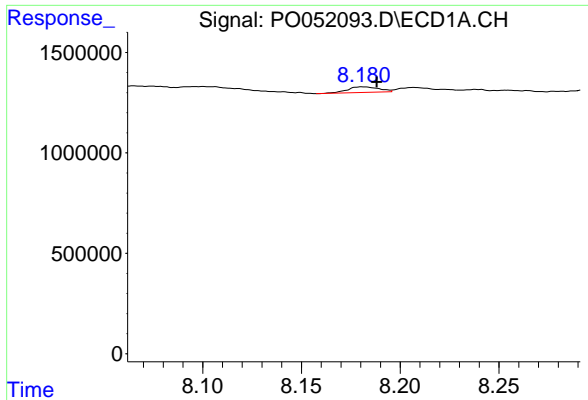
#36 AR-1262-1

R.T.: 7.681 min
 Delta R.T.: 0.029 min
 Response: 784992
 Conc: 7.52 ng/ml



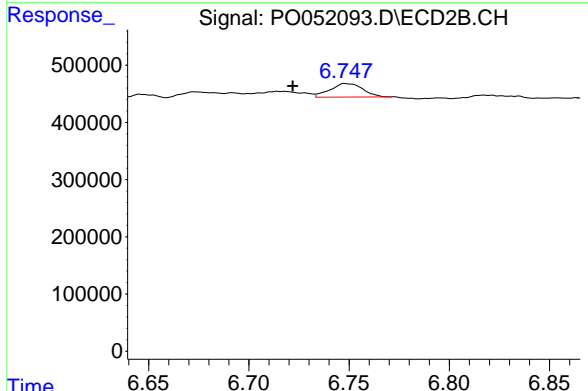
#36 AR-1262-1

R.T.: 6.191 min
 Delta R.T.: -0.043 min
 Response: 76117
 Conc: 1.66 ng/ml

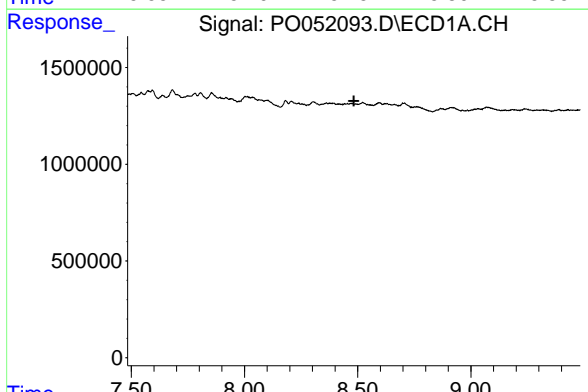


#37 AR-1262-2
 R.T.: 8.181 min
 Delta R.T.: -0.007 min
 Response: 314017
 Conc: 1.60 ng/ml

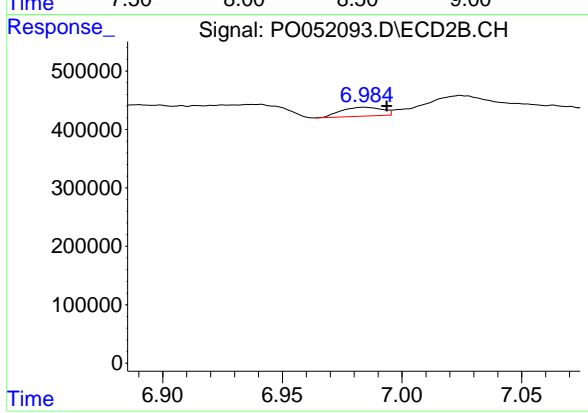
Instrument :
 ECD_O
 ClientSampleId :



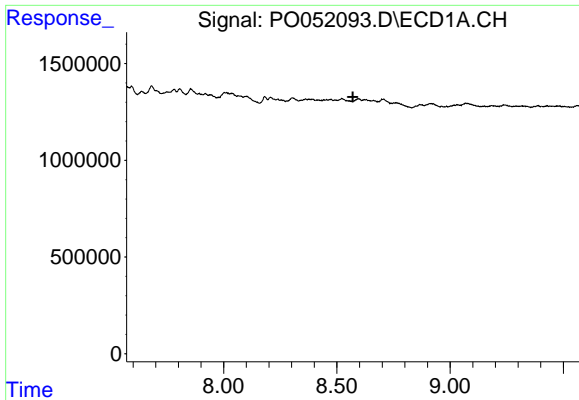
#37 AR-1262-2
 R.T.: 6.748 min
 Delta R.T.: 0.026 min
 Response: 270212
 Conc: 3.26 ng/ml



#38 AR-1262-3
 R.T.: 0.000 min
 Exp R.T. : 8.483 min
 Response: 0
 Conc: N.D.



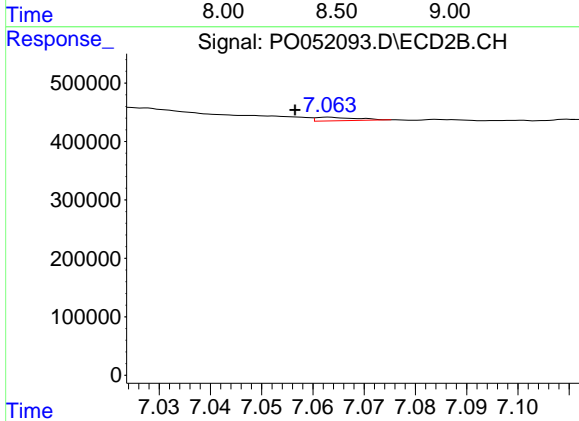
#38 AR-1262-3
 R.T.: 6.984 min
 Delta R.T.: -0.009 min
 Response: 181422
 Conc: 5.46 ng/ml



#39 AR-1262-4

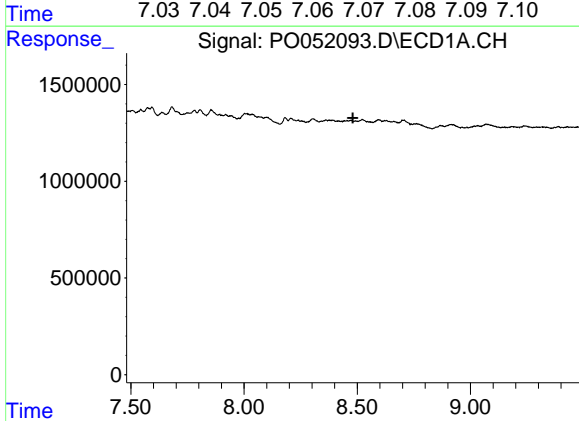
R.T.: 0.000 min
 Exp R.T.: 8.571 min
 Response: 0
 Conc: N.D.

Instrument :
 ECD_O
 ClientSampled :



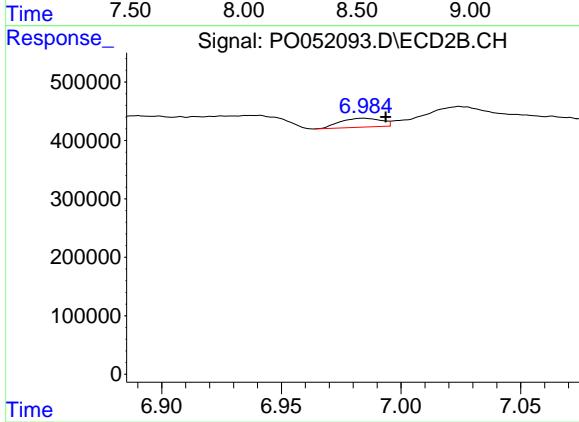
#39 AR-1262-4

R.T.: 7.063 min
 Delta R.T.: 0.007 min
 Response: 32533
 Conc: 0.53 ng/ml



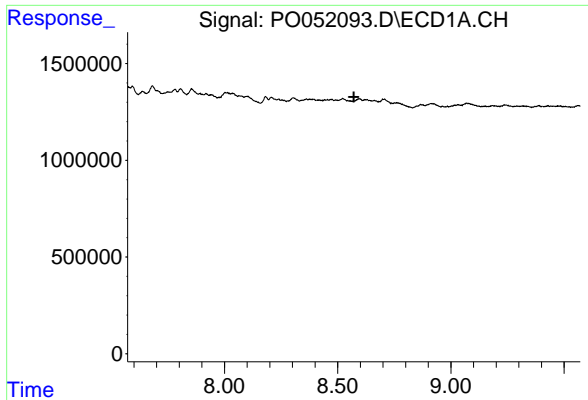
#41 AR-1268-1

R.T.: 0.000 min
 Exp R.T.: 8.481 min
 Response: 0
 Conc: N.D.



#41 AR-1268-1

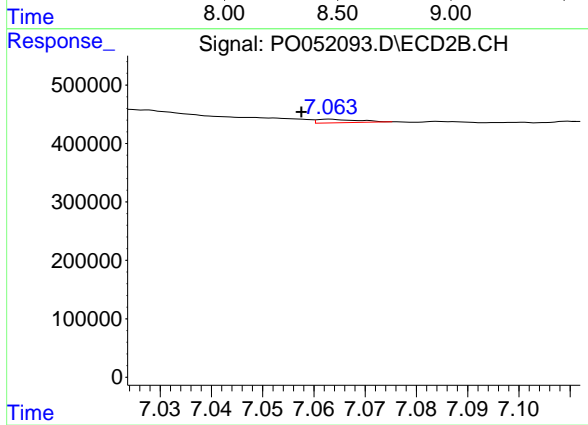
R.T.: 6.984 min
 Delta R.T.: -0.009 min
 Response: 181422
 Conc: 1.58 ng/ml



#42 AR-1268-2

R.T.: 0.000 min
 Exp R.T.: 8.571 min
 Response: 0
 Conc: N.D.

Instrument :
 ECD_O
 ClientSampleId :



#42 AR-1268-2

R.T.: 7.063 min
 Delta R.T.: 0.006 min
 Response: 32533
 Conc: 0.30 ng/ml