

Data Path : Z:\pestpcbsrv\HPCHEM1\ECD_0\Data\PO113021\
 Data File : PO083231.D
 Signal(s) : Signal #1: ECD1A.CH Signal #2: ECD2B.CH
 Acq On : 30 Nov 2021 11:55
 Operator : AJ\MA
 Sample : M4851-05
 Misc :
 ALS Vial : 15 Sample Multiplier: 1

Instrument :
 ECD_0
ClientSampleId :
 T-5C

Manual Integrations
APPROVED

Reviewed By :Ankita Jodhani 12/01/2021
 Supervised By :mohammad ahmed 12/01/2021

Integration File signal 1: autoint1.e
 Integration File signal 2: autoint2.e
 Quant Time: Nov 30 12:58:10 2021
 Quant Method : Z:\pestpcbsrv\HPCHEM1\ECD_0\methods\PO111921.M
 Quant Title : GC EXTRACTABLES
 QLast Update : Sat Nov 20 02:49:51 2021
 Response via : Initial Calibration
 Integrator: ChemStation 6890 Scale Mode: Small noise peaks clipped

Volume Inj. : 2 µl
 Signal #1 Phase : ZB-MR1 Signal #2 Phase: ZB-MR2
 Signal #1 Info : 30Mx0.32mmx 0.50µ Signal #2 Info : 30M x 0.32mm x 0.25µm

Compound	RT#1	RT#2	Resp#1	Resp#2	ng/ml	ng/ml

System Monitoring Compounds						
1) SA Tetrachlo...	4.949	3.951	1480143	521762	16.866m	17.117
2) SA Decachlor...	11.040	9.256	726796	297009	11.053	9.880

Target Compounds

(f)=RT Delta > 1/2 Window (#)=Amounts differ by > 25% (m)=manual int.

Data Path : Z:\pestpcbsrv\HPCHEM1\ECD_O\Data\PO113021\
 Data File : PO083231.D
 Signal(s) : Signal #1: ECD1A.CH Signal #2: ECD2B.CH
 Acq On : 30 Nov 2021 11:55
 Operator : AJ\MA
 Sample : M4851-05
 Misc :
 ALS Vial : 15 Sample Multiplier: 1

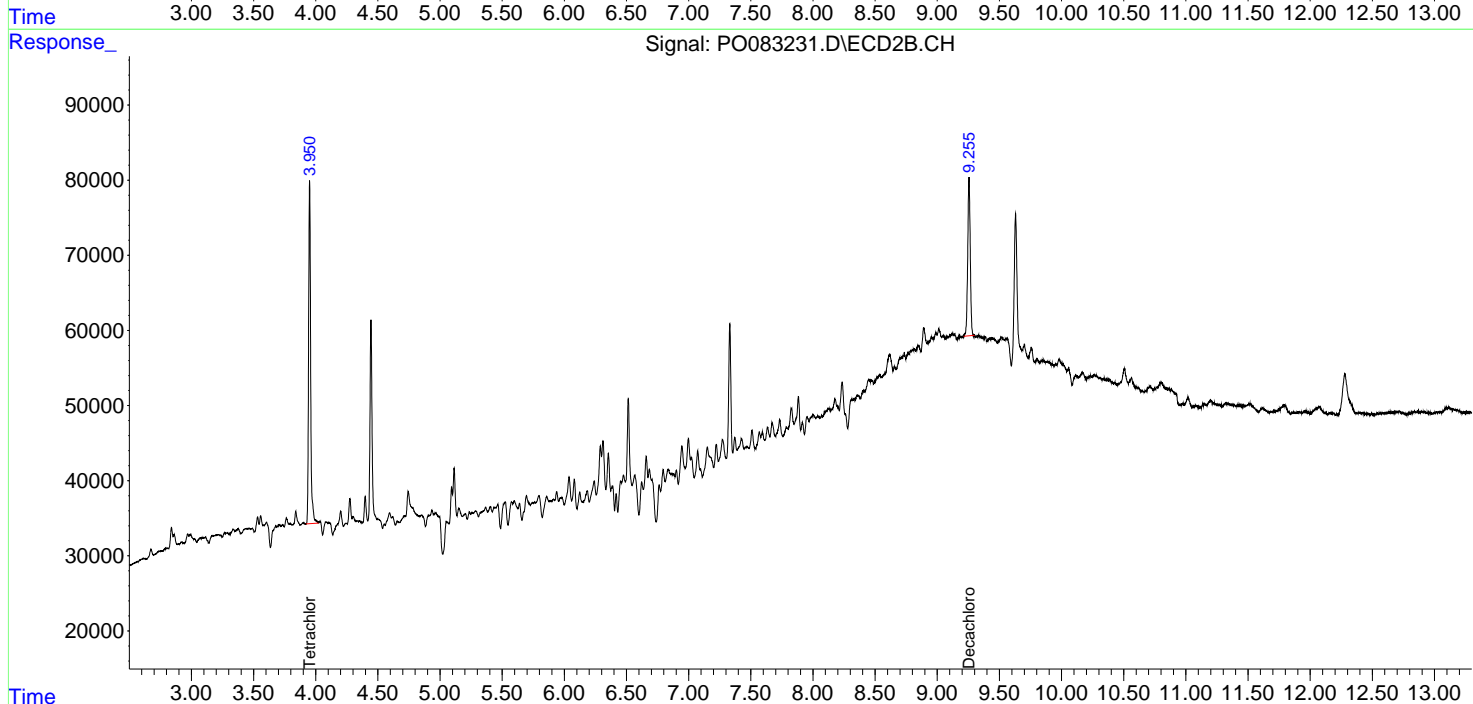
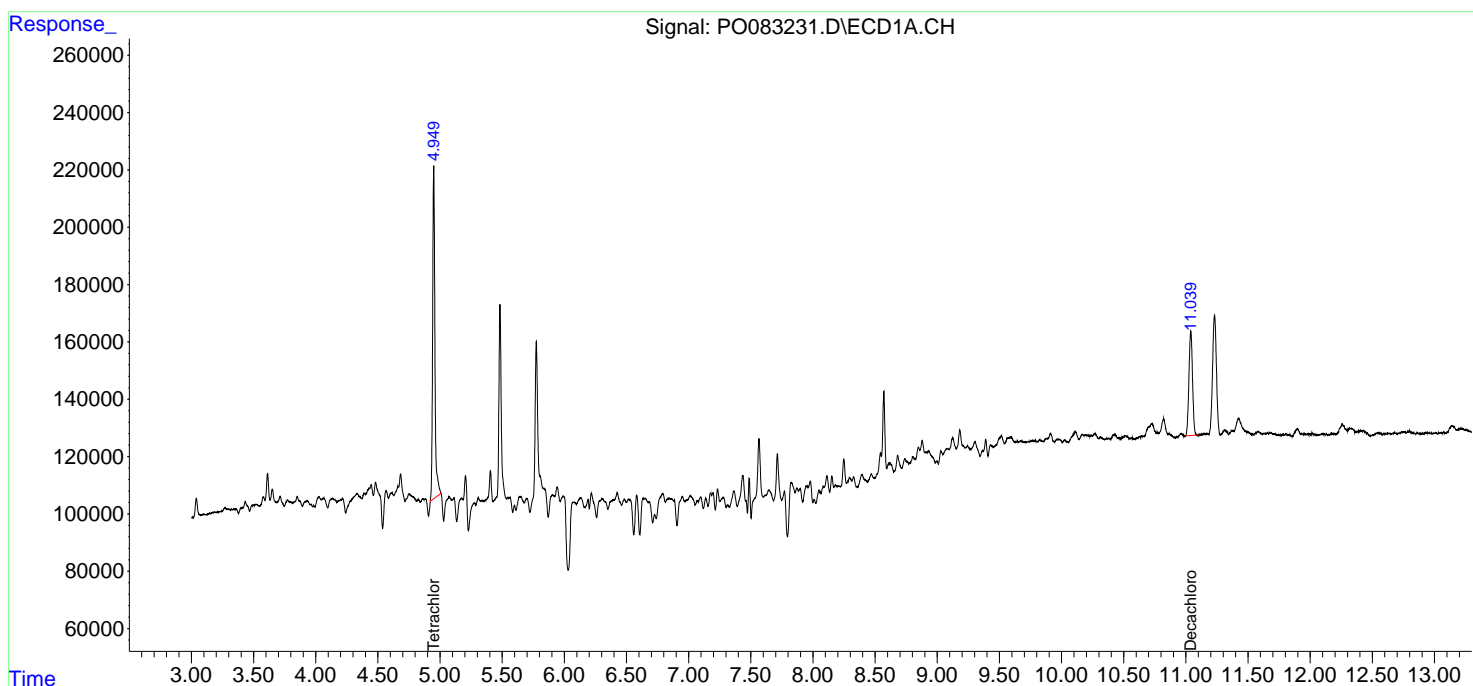
Instrument :
 ECD_O
 ClientSampleId :
 T-5C

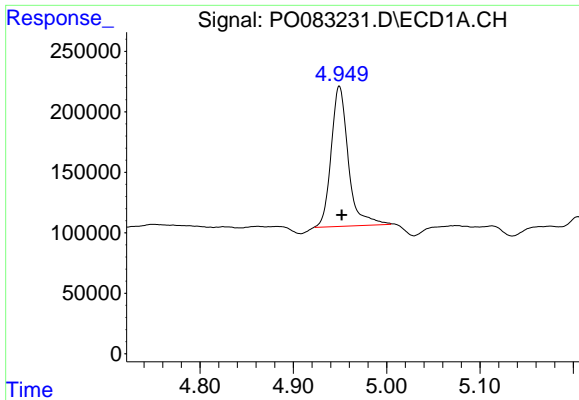
Manual Integrations
 APPROVED

Reviewed By :Ankita Jodhani 12/01/2021
 Supervised By :mohammad ahmed 12/01/2021

Integration File signal 1: autoint1.e
 Integration File signal 2: autoint2.e
 Quant Time: Nov 30 12:58:10 2021
 Quant Method : Z:\pestpcbsrv\HPCHEM1\ECD_O\methods\PO111921.M
 Quant Title : GC EXTRACTABLES
 QLast Update : Sat Nov 20 02:49:51 2021
 Response via : Initial Calibration
 Integrator: ChemStation 6890 Scale Mode: Small noise peaks clipped

Volume Inj. : 2 µl
 Signal #1 Phase : ZB-MR1 Signal #2 Phase: ZB-MR2
 Signal #1 Info : 30Mx0.32mmx 0.50µ Signal #2 Info : 30M x 0.32mm x 0.25µm





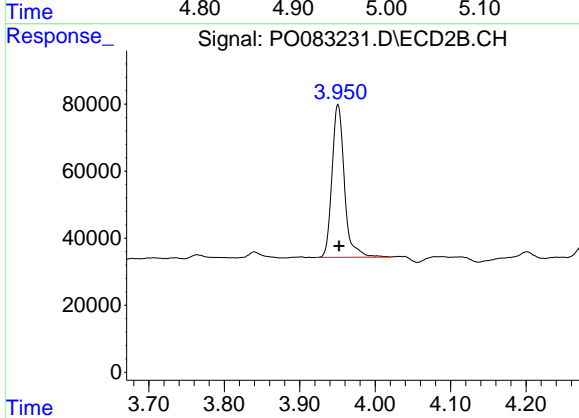
#1 Tetrachloro-m-xylene

R.T.: 4.949 min
 Delta R.T.: -0.003 min
 Response: 1480143
 Conc: 16.87 ng/ml

Instrument :
 ECD_O
 ClientSampleId :
 T-5C

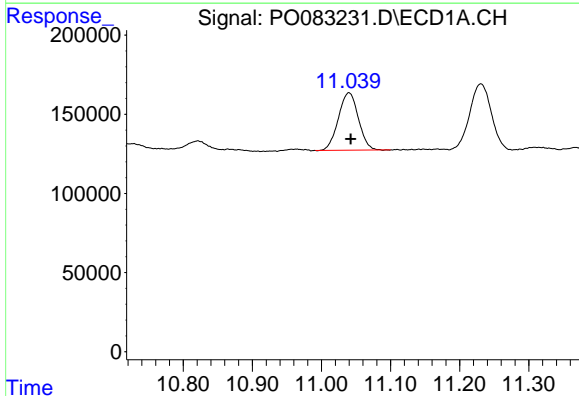
Manual Integrations
 APPROVED

Reviewed By :Ankita Jodhani 12/01/2021
 Supervised By :mohammad ahmed 12/01/2021



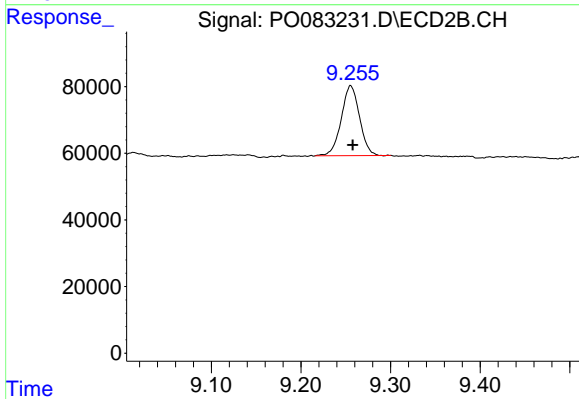
#1 Tetrachloro-m-xylene

R.T.: 3.951 min
 Delta R.T.: -0.001 min
 Response: 521762
 Conc: 17.12 ng/ml



#2 Decachlorobiphenyl

R.T.: 11.040 min
 Delta R.T.: -0.002 min
 Response: 726796
 Conc: 11.05 ng/ml



#2 Decachlorobiphenyl

R.T.: 9.256 min
 Delta R.T.: -0.002 min
 Response: 297009
 Conc: 9.88 ng/ml