

Data Path : Z:\pestpcbsrv\HPCHEM1\ECD_0\Data\PO113021\
 Data File : PO083261.D
 Signal(s) : Signal #1: ECD1A.CH Signal #2: ECD2B.CH
 Acq On : 30 Nov 2021 21:10
 Operator : AJ\MA
 Sample : M4850-03 10X
 Misc :
 ALS Vial : 35 Sample Multiplier: 1

Instrument :
 ECD_0
 ClientSampleId :
 SEC-2021-54A

Integration File signal 1: autoint1.e
 Integration File signal 2: autoint2.e
 Quant Time: Nov 30 22:48:13 2021
 Quant Method : Z:\pestpcbsrv\HPCHEM1\ECD_0\methods\PO111921.M
 Quant Title : GC EXTRACTABLES
 QLast Update : Sat Nov 20 02:49:51 2021
 Response via : Initial Calibration
 Integrator: ChemStation 6890 Scale Mode: Small noise peaks clipped

Volume Inj. : 2 µl
 Signal #1 Phase : ZB-MR1 Signal #2 Phase: ZB-MR2
 Signal #1 Info : 30Mx0.32mmx 0.50µ Signal #2 Info : 30M x 0.32mm x 0.25µm

Compound	RT#1	RT#2	Resp#1	Resp#2	ng/ml	ng/ml

System Monitoring Compounds						
1) SA Tetrachlo...	4.948	3.949	135706	46152	1.546	1.514
2) SA Decachlor...	11.034	9.258	106875	36042	1.625	1.199 #

Target Compounds

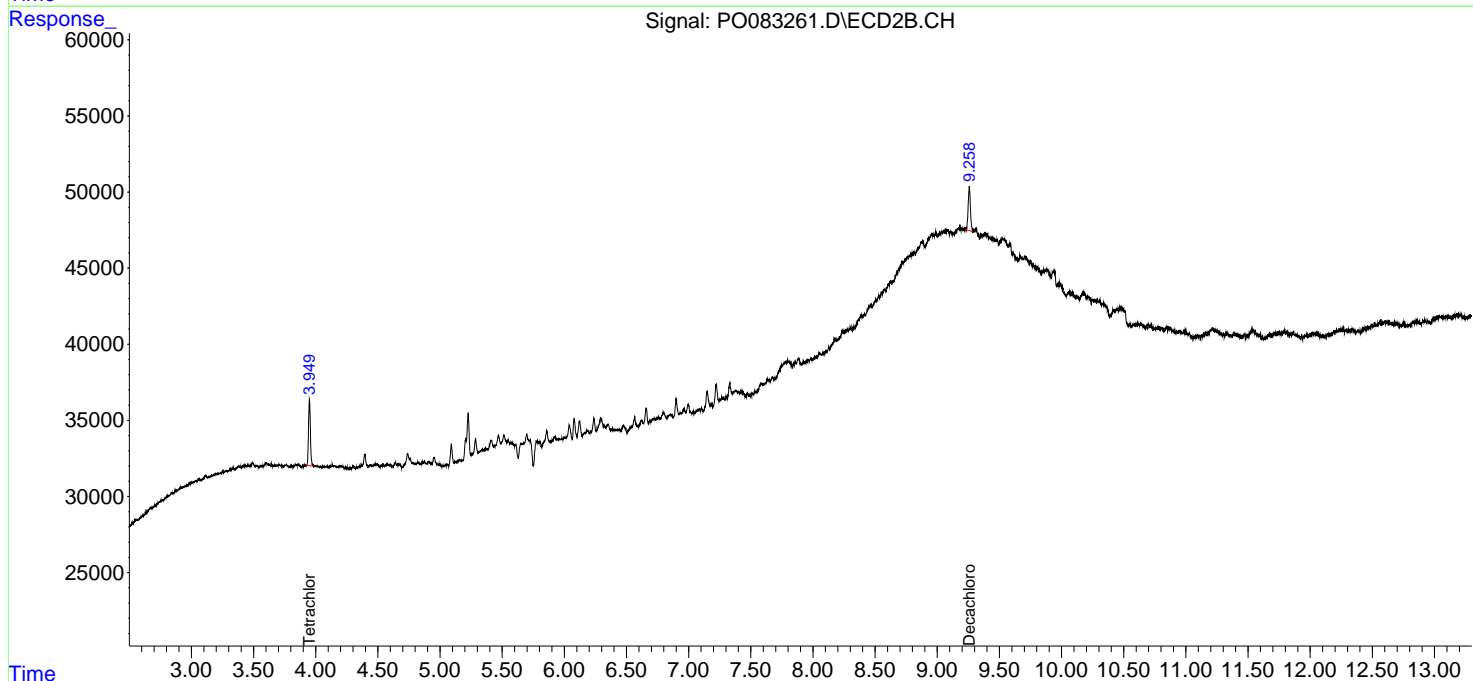
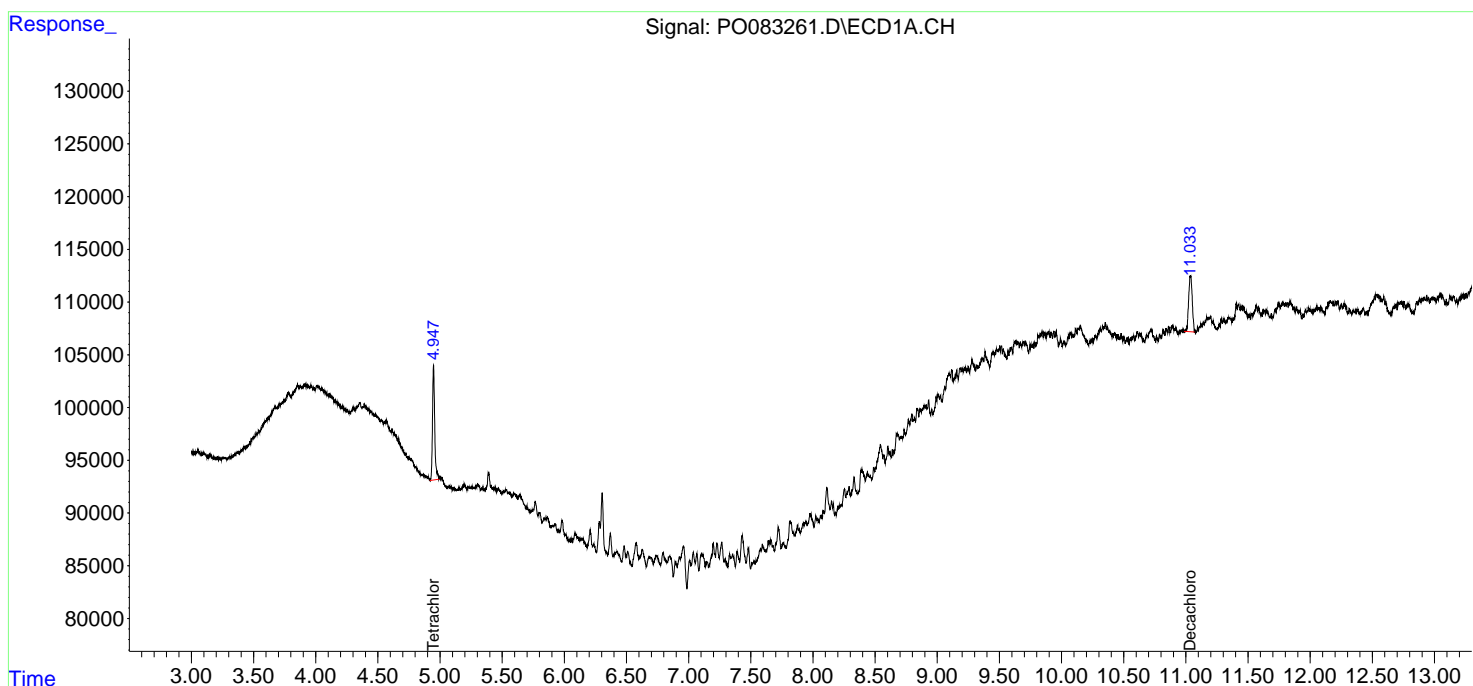
(f)=RT Delta > 1/2 Window (#)=Amounts differ by > 25% (m)=manual int.

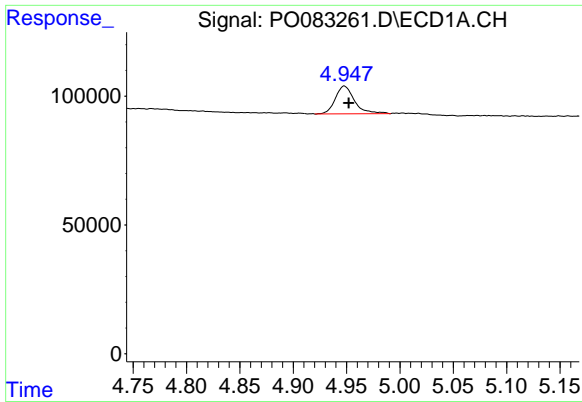
Data Path : Z:\pestpcbsrv\HPCHEM1\ECD_O\Data\PO113021\
 Data File : PO083261.D
 Signal(s) : Signal #1: ECD1A.CH Signal #2: ECD2B.CH
 Acq On : 30 Nov 2021 21:10
 Operator : AJ\MA
 Sample : M4850-03 10X
 Misc :
 ALS Vial : 35 Sample Multiplier: 1

Instrument :
 ECD_O
 ClientSampleId :
 SEC-2021-54A

Integration File signal 1: autoint1.e
 Integration File signal 2: autoint2.e
 Quant Time: Nov 30 22:48:13 2021
 Quant Method : Z:\pestpcbsrv\HPCHEM1\ECD_O\methods\PO111921.M
 Quant Title : GC EXTRACTABLES
 QLast Update : Sat Nov 20 02:49:51 2021
 Response via : Initial Calibration
 Integrator: ChemStation 6890 Scale Mode: Small noise peaks clipped

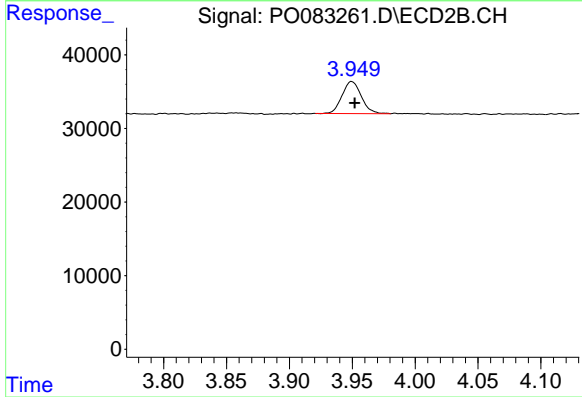
Volume Inj. : 2 µl
 Signal #1 Phase : ZB-MR1 Signal #2 Phase: ZB-MR2
 Signal #1 Info : 30Mx0.32mmx 0.50µ Signal #2 Info : 30M x 0.32mm x 0.25µm



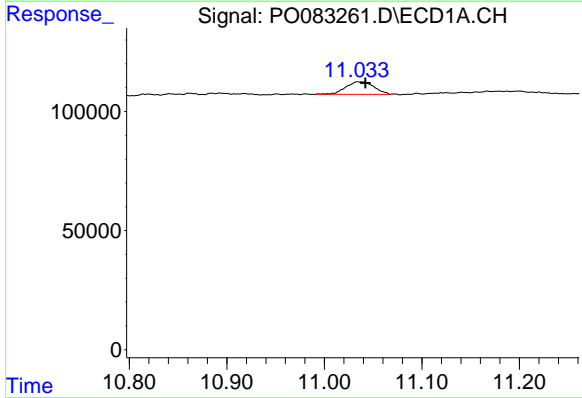


#1 Tetrachloro-m-xylene
 R.T.: 4.948 min
 Delta R.T.: -0.004 min
 Response: 135706
 Conc: 1.55 ng/ml

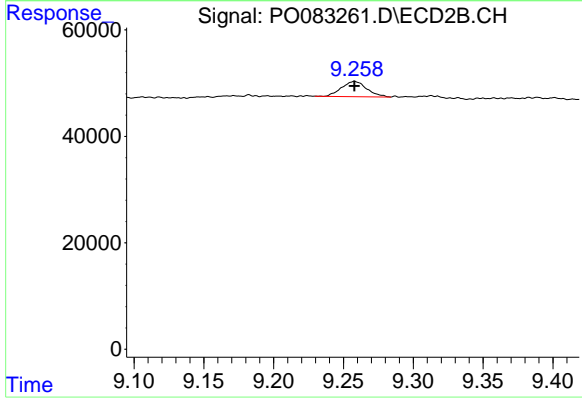
Instrument :
 ECD_O
 ClientSampleId :
 SEC-2021-54A



#1 Tetrachloro-m-xylene
 R.T.: 3.949 min
 Delta R.T.: -0.003 min
 Response: 46152
 Conc: 1.51 ng/ml



#2 Decachlorobiphenyl
 R.T.: 11.034 min
 Delta R.T.: -0.008 min
 Response: 106875
 Conc: 1.63 ng/ml



#2 Decachlorobiphenyl
 R.T.: 9.258 min
 Delta R.T.: 0.000 min
 Response: 36042
 Conc: 1.20 ng/ml